

# Tax Revenue Reforms and Income Distribution in Developing Countries

**Sanjeev Gupta and João Tovar Jalles**

## Abstract

We explore the impact of major revenue mobilization episodes on income distribution dynamics using a new “narrative” database of major policy changes in tax and revenue administration systems, covering 45 emerging and low-income countries from 2000 to 2015. Our main finding is that after a tax reform (particularly those affecting the personal income or the operation of the revenue administration), the Gini index falls and the bottom income share rises. This result does not hold for sub-Saharan Africa, calling into question the design of tax reforms implemented in the region (mostly fragile states in the sample). In general, to reduce more rapidly income inequality (and improve the income prospects of the poorest strata of the population), it would be more effective to implement tax reforms when the economy is growing relatively slowly. Finally, the smaller the government and the smaller the tax system, the larger the beneficial impact of tax reforms on income distribution. Our results are robust to a battery of sensitivity and robustness tests.

Center for Global  
Development  
2055 L Street NW  
Fifth Floor  
Washington DC 20036  
202-416-4000  
[www.cgdev.org](http://www.cgdev.org)

This work is made available  
under the terms of the Creative  
Commons Attribution-  
NonCommercial 4.0 license.

## **Tax Revenue Reforms and Income Distribution in Developing Countries**

Sanjeev Gupta  
Center for Global Development

João Tovar Jalles  
ISEG, University of Lisbon

The authors are grateful to Benedict Clements and Mark Plant for very helpful suggestions on the earlier draft. Any remaining errors are the authors' sole responsibility. The usual disclaimer applies.

The Center for Global Development is grateful for contributions from the Bill & Melinda Gates Foundation in support of this work.

Sanjeev Gupta and João Tovar Jalles. 2020. "Tax Revenue Reforms and Income Distribution in Developing Countries." CGD Policy Paper 175. Washington, DC: Center for Global Development. <https://www.cgdev.org/publication/> <https://www.cgdev.org/publication/tax-revenue-reforms-and-income-distribution-developing-countries>

**Center for Global Development**  
**2055 L Street NW**  
**Washington, DC 20036**

202.416.4000  
(f) 202.416.4050

**[www.cgdev.org](http://www.cgdev.org)**

The Center for Global Development works to reduce global poverty and improve lives through innovative economic research that drives better policy and practice by the world's top decision makers. Use and dissemination of this Policy Paper is encouraged; however, reproduced copies may not be used for commercial purposes. Further usage is permitted under the terms of the Creative Commons License.

The views expressed in CGD Policy Papers are those of the authors and should not be attributed to the board of directors, funders of the Center for Global Development, or the authors' respective organizations.

# Contents

1. Introduction.....	2
2. Literature Review .....	5
3. Econometric Methodology.....	8
4. Data and Stylized Facts .....	9
4.1. Income Distribution .....	9
4.2. Tax Reforms.....	11
4.3. Other Data.....	14
5. Empirical Results.....	16
5.1. Baseline .....	16
5.2. Sensitivity and Robustness.....	20
5.3. The Role of Business Cycle conditions.....	21
5.4. Does the Size of the Tax System or the Size of the Government matter? .....	24
6. Conclusion and Policy Implications.....	26
References.....	28
Appendix 1. List of Countries by Region.....	35
Appendix 2. Sensitivity and Robustness Checks.....	37

# 1. Introduction

There is considerable emphasis on both emerging and low-income countries collecting more taxes from domestic sources to help achieve the Sustainable Development Goals (SDGs). This is because the resources required to finance the SDGs are huge and the ability of advanced countries to transfer resources through aid are heavily constrained by their debt-to-GDP ratio, which now exceeds 100 percent of GDP on average and are likely to increase even further following the COVID-19 crisis. The Addis Ababa Agenda for financing development pays special attention to domestic resource mobilization in emerging and low-income countries and SDG 17.1 tracks country level domestic resource mobilization efforts. However, domestic resource mobilization should not come at the cost of impoverishment of the poor or widening of income disparities.

Developing countries are on pace to collect public revenues of about \$4,444 per person annually by the end of 2020, which corresponds to over \$1 per person per day. This compares with \$16,200 per person in richer countries (2015 data). If developing countries were to improve revenue-to-GDP by an extra 2 percentage points by the end of 2020, their annual public revenues would increase collectively by \$144bn—which corresponds to more than the total amount of development aid recorded in 2016 (Oxfam, 2019).<sup>1</sup>

Generally speaking, inequality refers to the degree to which distribution of economic welfare generated in an economy differs from that of equal shares among its inhabitants (KNBS and SID, 2013). Inequality is a multifaceted concept that can be reflected in terms of access to basic services, opportunities, income, among others. Our focus in this paper is on income inequality. Even though some (positive) degree of income inequality is unavoidable, and it may even stimulate investment and innovation, there is ample evidence showing that elevated levels of inequality can cause financial, political and social instability and undermine the pace and sustainability of economic growth (Benabou, 1996; Berg and Ostry, 2017; Cingano, 2014, Ostry et al., 2014; Agnello et al., 2017).

Due to high levels of income inequality around the world, many governments have made redistribution of income a major policy goal.<sup>2</sup> In Figure 1 we plot the median Gini coefficient on disposable income from the Standardized World Income Inequality Database (SWIID) between 1970 and 2015 in selected geographical regions. We can observe that, at the end of the time span, sub-Saharan Africa is the region with the highest inequality.<sup>3</sup> While countries in Asia and the Middle East have been relatively stable over time, there has been a rising trend in inequality in both European and North American regions.

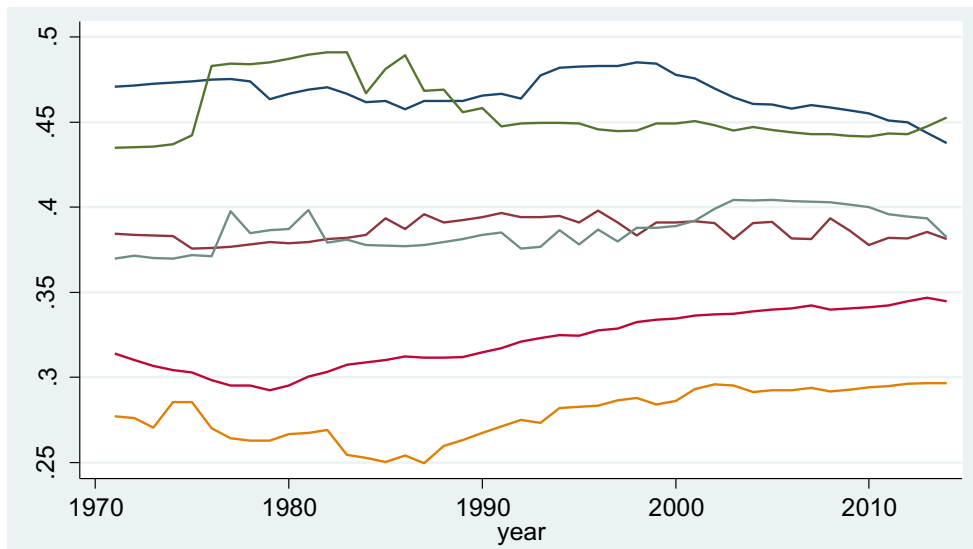
---

<sup>1</sup> This Oxfam calculation is based on 2000–2015 trends in population growth and domestic revenue mobilization. Based on conservative GDP growth projections, Oxfam calculated two scenarios for revenue increases. With those trends, they project that the average revenue-to-GDP ratio would be 24 percent and collective GDP would be around US\$7.225 trillion. This would generate around \$1.738 trillion in domestic revenues collectively by developing countries in 2020. With projected population of 3.913 billion people in developing countries in 2020, the \$1.738 trillion in revenues would be equivalent to \$1.22 per person daily revenues.

<sup>2</sup> Piketty (2014) presents a new approach to understanding the evolution of income and wealth distribution by examining historical evidence. According to Krugman (2014), unequal compensation and high incomes of a few individuals have led to accumulation of wealth.

<sup>3</sup> Gini indices are measured on a [0–100] scale with larger values denoting higher inequality.

**Figure 1. Gini (disposable income) by region over time, 1970–2015**



*Note:* blue line refers to Latin America; green line refers to Sub Saharan Africa; dark red line refers to Middle East and North Africa; grey line refers to Asia; light red line refers to North America; orange line refers to Europe.

*Source:* SWIID.

The list of underlying cyclical and structural forces affecting the level and dynamic evolution of inequality is long. These range from demographic trends to persistent cross-country differences in macroeconomic policies or different institutional settings (see e.g. Jalles and Mello, 2019). One that has been receiving growing attention is the role attributed to fiscal policy which shapes a country's distribution of income and poverty (Clements et. al 2015; DeFina and Thanawala, 2004). This has made the role of government in income redistribution—in particular, the tax-benefit system—all the more relevant (Ortiz and Cummins, 2011; Rosen and Gayer, 2014).<sup>4</sup> Governments need to strike a balance between efficiency and redistribution when designing a tax system (Clements et. al, 2015; Diamond and Mirrlees, 1971).<sup>5</sup>

Studies have shown that in many countries a substantial proportion of the poor are made poorer (or non-poor made poor) by the tax and transfer system. Higgins and Lustig (2016) find that in ten of twenty-five countries they studied at least one-quarter of the poor paid more in taxes than they received in transfers. This is because tax and transfer systems in low and middle-income countries are typically far less effective than those in OECD countries at reducing poverty and inequality (Bastagli et al., 2015). In the OECD countries, the tax and transfer systems have lowered average market income Gini by one-third (Coady et al., 2015). The relative ineffectiveness of tax and transfer systems in emerging and low-income countries is attributable to low level of revenues and poor targeting of spending programs.

As we discuss in more detail in section 2, many authors have looked at the role attributed to different taxes in affecting both economic growth and income inequality in an effort to understand taxes that make the overall

<sup>4</sup> Taxation provides resources to the government to perform critical roles such as economic stabilization, allocation and redistribution (Musgrave, 1959).

<sup>5</sup> The theory of optimal taxation looks at the tax design that seeks to maximize social welfare, an analysis that is beyond the scope of this paper.

revenue system pro-poor and more inclusive. The majority of these studies focus on advanced economies and many have not reached a consensus on the nature of the tax-inequality relationship (Atkinson and Leigh, 2013). Tax and revenue administration reforms are typically not randomly assigned in time and space and vary widely across developing countries, and their effects in improving income distribution, if any, are not clearly established. This paper contributes to filling this gap by analyzing the relationship between inequality and tax policy by using a new dataset that does not suffer from the limitations of cross-sectional or time units, as has been the case with other studies (e.g. Piketty and Saez, 2003). From a policy point of view, as Bird (2005) suggested, the issues related to income distribution not only are relevant to tax policy, but they also affect the minds of policy makers with regard to vertical and horizontal justice. A good understanding of the distributive impact of ordinary taxes should help in moving towards justice-oriented tax systems without sacrificing efficiency (Askari, 2011).

We use a “narrative” database of major increases in government tax revenue, stemming from both improvements in revenue administration and specific tax policy measures, put together by Akitoby et al. (2019) for 45 developing economies (23 emerging and 22 low-income) during 2000 to 2015. Using this database, we estimate the dynamic short to medium-term response of income distribution proxies to different tax policy measures. An important novelty and strength of this database is the precise timing and nature of key legislative tax actions (or tax reform “shocks”) over the 15-year period. We rely on the local projection method (Jordà, 2005), which has been used to study the dynamic impact of macroeconomic shocks such as financial crises (Romer and Romer, 2017) or fiscal shocks (Jordà and Taylor, 2016). Because the short-term effects of tax reforms may differ depending on the phase of the business cycle prevailing at the time of the reform and initial conditions (such as the size of the existing tax system or general government), we also explore the role of these non-linearities in shaping the dynamic response of income distribution proxies to tax reforms<sup>6</sup>, using the smooth transition autoregressive model developed by Granger and Teräsvirta (1993).

While we argue that the dataset used in the paper provides an exogenous source for tax reforms, endogeneity can still be a potentially significant concern in our framework since i) revenue mobilization efforts may not necessarily be exogenous events; and ii) several authors have found it difficult to control for the two-way causality between income and inequality in most cross-country studies. We try to address these major methodological challenges by controlling for expected economic growth at the time of revenue reforms and other possible short-term drivers of income inequality. In order to mitigate potential endogeneity concerns, we also estimate our specifications using an Instrumental Variable (IV) approach. On the one hand, to instrument revenue mobilization reforms we draw instruments from the political economy literature for the drivers of structural reforms more broadly (and not necessarily only fiscal or economic reforms in general). On the other hand, we use the growth rate of real GDP of main trading partners to instrument output growth, following Cevik and Correa-Caro (2020).

The main findings can be summarized as follows. After a general tax reform, the Gini index slowly falls, and the bottom income share slowly rises. This result is driven largely by countries outside sub-Saharan Africa. Particularly effective in improving the income distribution seems to be personal income tax (PIT) reforms and also reforms in the operation of the tax revenue administration. The results further show that the design of tax reforms has been ineffective in reducing disposable income inequality in sub-Saharan Africa; unlike

---

<sup>6</sup> See Cacciatore et al. (2016) and Duval and Furceri (2018) for examples on the nonlinear effects of reforms on macroeconomic variables depending on the phase of the business cycle. See IMF (2019) for the role of the fiscal stance in affecting reforms covering macroeconomic variables in developing countries.

other country groups, PIT reforms worsened the Gini coefficient. Our results are robust to a battery of tests including the exclusion of country fixed effects, the addition of time effects and time trends, controlling for other short-term drivers of inequality (including expectations about future growth). Conducting endogeneity robust estimations, we found stronger negative (positive) effects of tax reforms on inequality (bottom income share). We also found that in order to reduce more rapidly income inequality and improve the income prospects of the poorest strata of the population, it is more effective to implement tax reforms when the economy is growing relatively slowly. Finally, the smaller the government and the smaller the tax system, the larger the beneficial impact of tax reforms on income distribution.

The remainder of the paper is structured as follows. As background, context and motivation for our empirical analysis, Section 2 provides an overview of related literature. Section 3 presents the empirical strategy followed to study the dynamic response of income distribution proxies to revenue mobilization reforms. Section 4 presents the data and key stylized facts. Section 5 discusses the baseline empirical results, sensitivity and robustness checks. Section 6 concludes and elaborates on the policy implications.

## 2. Literature Review

An extensive literature is available on the determinants of income distribution.<sup>7</sup>

First and foremost, most authors tend to agree that a high degree of income inequality affects economic growth negatively (Alesina and Rodrik, 1994; Perotti, 1996; Cingano, 2014; Bourguignon, 2004; Kayizzi-Mugerwa, 2001).<sup>8</sup> There are several reasons for this. High inequality is typically associated with unequal access to basic facilities and opportunities, political instability and social problems (such as crime and other conflicts and the use of illegal drugs which further worsens social inequalities) (Wilkinson and Pickett, 2010; Ortiz and Cummins, 2011). Globalization, technological change, changes in demography, unemployment and disparities in the distribution of wages and salaries are seen as the major causes of income inequality (Krugman, 2007; Kayizzi-Mugerwa, 2001; Stiglitz, 2012).

At the same time, higher taxes can generate negative consequences for growth by affecting consumption and investment decisions (Feldstein, 2012). Earlier theoretical studies on taxation show how higher taxes tend to discourage investment rates (Auerbach and Hasset, 1991) as well as labor supply of individuals (Hausman, 1985) and productivity growth, the latter adversely affecting research and development.<sup>9</sup> Subsequently, some authors used endogenous growth models to simulate the effects of tax reforms on economic growth and found that a decrease in the distorting effects of the current tax structure may lead to a permanent increase in economic growth (Gale, 1996).

Much of the empirical work examining the effect of income inequality on growth argues that inequality affects growth through its effect on taxes and redistribution (Barro, 2000; Milanovic, 2002; Perotti, 1992; Persson and Tabellini, 1994). The conventional wisdom is that taxes (particularly individual and corporate)

---

<sup>7</sup> The inequality literature can be divided into two strands: the first group studies income inequality (Golding and Margo, 1992; Feenberg and Poterba, 1993, 2000; Frank, 2009; Atkinson et al., 2011); the other focuses on wealth inequality (Saez and Zucman, 2016; Johannesen and Zucman, 2014; Alstadsaeter et al., 2019).

<sup>8</sup> According to Kaldor (1995), income inequality can also be good for growth by enabling more savings and, hence, capital accumulation.

<sup>9</sup> The main channel is that corporate and personal income taxes reduce incentives to raise supply through capital accumulation or productivity enhancements (Schwellnus and Arnold, 2008; Vartia, 2008; Galindo and Pombo, 2011).

were largely motivated politically by “concerns about equity” and can help in reducing inequality and redistributing income (Burman, 2015). The general argument, based on the median voter hypothesis, is that as the ratio of median income to mean income falls the median voter will vote for higher taxes and greater redistribution.<sup>10</sup> Therefore, greater income inequality should lead to greater progressivity.<sup>11</sup> Ultimately, the design of the tax system determines its redistribution ability (Diamond and Mirrlees, 1971; Atkinson and Stiglitz, 1976; Saez, 2012).

The distribution efficiency of different taxes across countries and has been studied by e.g. Chu et al. (2000), Martinez-Vasquez et al., 2012) and Clements et. al. (2015). Some studies show that the effect of taxes on inequality and poverty is small and/or weak, more so in developing countries (e.g. Bird and Zolt, 2014). The reason as noted earlier is that in developing countries, tax-benefit systems are less developed and, therefore, potentially less redistributive, there is greater reliance on indirect taxes (compared with advanced economies), lower progressivity in direct tax schedules and less comprehensive formal social safety nets.<sup>12</sup> According to Prasad (2008), there are four main reasons why developing countries rely more heavily on indirect taxes than direct taxes. First, given their low-income level, the tax base is relatively small and, as a result, indirect taxes represent an easier way to collect government revenue (Bahl and Bird, 2008; Casale, 2012). Second, the efficiency of collecting direct taxes in developing countries is often poor. Third, income tax evasion is high. Fourth, developing countries have a large informal sector which does not pay income taxes.

There are several reasons why developing countries are less capable of using the tax system to redistribute (Bastagli et al., 2015). First, income and wealth taxes play a relatively small role in their tax structure compared with advanced economies. Second, the personal income tax in developing countries is often a merely wage withholding tax.<sup>13</sup> The limited ability of the personal income tax to tax effectively income from most forms of capital may suggest that it is less likely that the rich would bear significant tax liability. Third, it may be politically difficult to impose effective income tax and wealth taxes in many countries.

Despite the prevalence of redistribution as a guiding motive in the design of tax systems in developed countries, poverty and/or inequality considerations have generally been of secondary importance in developing countries’ fiscal reforms. A growing body of literature has documented the positive effect of the tax reforms of the 2000’s in reducing income inequality in Latin America (Jimenez et al., 2010; Cetrangolo

---

<sup>10</sup> A small but growing number of empirical studies have examined the effect of democracy on total tax revenues and the composition of taxation (Aidt and Jensen, 2009; Boix, 2001; Kenny and Winner, 2006; Profeta et al., 2013).

<sup>11</sup> Progressive taxation was thought to be strategically important to favor a more inclusive process of economic development (Kaldor, 1963). How changes in tax progressivity affect income distribution has been the object of several papers at the cross-country level including Feenberg and Poterba (1993), Feldstein (1995, 1999), Piketty et al. (2014), Frey and Schaltegger (2016) and Saez (2017).

<sup>12</sup> In the case of Latin America, for example, incidence analysis shows that the redistributive impact of tax-benefit systems varies considerably from country to country, and it tends to be stronger in Argentina, Brazil and Uruguay (Brezzi and de Mello, 2016), although they are considerably less redistributive than in advanced economies. Ilaboya and Ohonba (2013) found that tax burden has a significant negative effect on income inequality in Nigeria (using household survey data).

<sup>13</sup> In many countries taxes on labor in the formal sector comprise over 90 percent of the total individual income tax revenue. In some countries, the tax law does not reach income from capital, such as capital gains. In other countries, the limitations of tax administrations may effectively exempt certain types of income from tax.



and Gomez Sabaini, 2007; Hanni et al., 2015).<sup>14</sup> Ideally, this should be achieved while minimizing distortionary effects on growth caused by taxation.<sup>15</sup>

Common reforms include a shift from trade taxes to domestic sales taxes, the rationalization of income taxes and increase of its progressivity<sup>16</sup>, and measures to reduce budget deficits and/or raise tax-to-GDP ratios while improving the efficiency of tax collection (IMF, 2014). Another commonly considered policy action includes the shift of the revenue mix away from corporate or personal income tax towards consumption (value-added) and property taxes, which could be growth-enhancing. Indeed, Acosta-Ormaechea and Yoo (2019) confirmed that consumption and property taxes are more growth friendly than income taxes. Similarly, McNabb and LeMay-Boucher (2014) and Drucker et al. (2017) found that reducing the share of income taxes in the revenue mix would raise GDP growth.

Most cross-country empirical studies support that direct taxes are progressive hence they are better instruments to redistribute income than indirect taxes (Obadic et al., 2014; Saez, 2010; Barnard, 2010; Weller, 2008).<sup>17</sup> Consumption taxes negatively affect income distribution (Martinez-Vasquez et al., 2012; Karanfil and Ozkaya, 2013). The efficiency of consumption taxes and its role in enhancing equity was examined in a qualitative study by Correia (2007). For efficiency purposes a single rate is preferred to increase the revenue yield, combined with a well targeted transfer program (Engel et al. 1999; Okner, 1975). The more the consumption taxes contribute to the government revenue, the stronger are the effects on efficiency and welfare for the low-income earners. This view of consumption tax contrasts with the common view that these taxes are regressive.<sup>18</sup> This regressivity can be mitigated by having differentiated rate; lower rates for basic goods and higher rate for luxury goods, though this complicates the tax administration and is sub-optimal (Saez, 2010). Higher VAT thresholds for registration of traders can also obviate the regressivity associated with consumption tax since the poor tend to buy more from small traders. AfDB (2010) advocates removal of tax exemptions and incentives in the Kenya tax system as they undermine tax equity and lead to revenue losses. Askari (2011), analyzing the Iranian case, finds that direct taxes affect income distribution negatively due to tax evasion while indirect taxes have a positive impact on income distribution. Karanfil and Ozkaya (2013) find that indirect taxes have a long run positive impact on poverty in Turkey. Saez (2016) finds that the 2013 US tax increase of the top marginal rate had a large negative effect on reported income at the top.

This paper contributes to the literature on income inequality drivers by looking specifically at the role played by tax reforms by category, which has been largely overlooked and for which there is no consensus.

---

<sup>14</sup> This contrasts with earlier findings that taxation had a negligible effect on income inequality in Latin American countries in previous decades (Cornia et al., 2011).

<sup>15</sup> Empirically, a number of studies support the hypothesis that distortive taxes hold back growth more than others (Kneller et al., 1999; Gemmel et al., 2011, 2014; Johansson, 2016; Drucker et al., 2017). Corporate and personal income taxes are considered more distortionary than consumption or property taxes as shown by Arnold et al. (2011).

<sup>16</sup> In the post-WWII period policymakers assigned to taxation the specific role of promoting redistribution through the introduction of high taxes on income (Cornia et al., 2011). Recent public debate has focused on the role of income taxes in reducing inequality (Atkinson, 2015; Piketty, 2014).

<sup>17</sup> The main reason is that, while consumption and property taxes are close to proportional—all individuals are subject to the same tax rate irrespective of their level of income—, personal income taxes are typically progressive. In developing countries in particular consumption taxes are borne by all consumers both in the formal and informal sector, while personal and corporate income taxes are usually paid by firms in the formal sector; the informal sector escapes paying income taxes.

<sup>18</sup> Swistak et al. (2015) analyzing value-added tax reforms in Poland found these to be regressive. According to Saez (2010) commodity taxes can be used to complement direct taxes to redistribute income.

### 3. Econometric Methodology

In order to estimate the dynamic response of income distribution proxies to tax revenue reforms, we follow the local projection method proposed by Jordà (2005) to estimate impulse-response functions. This approach has been advocated by Auerbach and Gorodnichenko (2013) and Romer and Romer (2017) as a flexible alternative to vector autoregression (autoregressive distributed lag) specifications since it does not impose dynamic restrictions. It is better suited to estimating nonlinearities in the dynamic response—such as, in our context, interactions between tax reform shocks and macroeconomic conditions. The baseline specification is:

$$y_{t+k,i} - y_{t-1,i} = \alpha_i + \beta_k R_{i,t} + \theta X_{i,t} + \varepsilon_{i,t} \quad (1)$$

in which  $y$  is the dependent variable of interest, namely an income distribution proxy<sup>19</sup>;  $\beta_k$  denotes the (cumulative) response of the variable of interest in each  $k$  year after the tax revenue reform;  $\alpha_i$  are country fixed effects, included to take account of differences in countries' average current account balance;  $R_{i,t}$  denotes the tax revenue reform shock in the area considered—if there are sequences of years with the same type of reform, we focus only on the first year of a given tax reform episode to improve the identification and minimize reverse causality problems (for a similar approach see Ball, Furceri, Leigh, Loungani, 2013).<sup>20</sup>  $X_{i,t}$  is a set of control variables including two lags of tax reform shocks, two lags of real GDP growth and two lags of the dependent variable.

Equation (1) is estimated using OLS. Impulse response functions (IRFs) are then obtained by plotting the estimated  $\beta_k$  for  $k=0,1,..5$  with 90 (68) percent confidence bands computed using the standard deviations associated with the estimated coefficients  $\beta_k$ —based on robust standard errors clustered at the country level.<sup>21</sup> According to Sims and Zha (1999) “the conventional pointwise bands common in the literature should be supplemented with measures of shape uncertainty.” Hence, for characterizing likelihood shape, bands that correspond to 68 percent posterior probability—or one standard deviation shock—provide a more precise estimate of the true coverage probability.<sup>22</sup>

An important issue raised by some scholars (Piketty and Saez, 2007; Poterba, 2007) is the potential reverse causation between economic inequality and taxation that may generate an endogeneity problem in the relationship under consideration. According to this rationale, lower degrees of economic inequality may be the contemporaneous result of a more redistributive tax structure (i.e. a tax structure imposing a large tax burden on capital relative to labor) rather than solely the cause of it. Tax revenue reforms may not be entirely exogenous shocks as they could be potentially anticipated, correlated with past changes in economic activity and implemented because of concerns about fiscal sustainability or other important developmental needs. The same is true with respect to the potential endogeneity of income in affecting inequality dynamics. These potential methodological limitations are dealt with by relying on tax data constructed to reflect the relevant

---

<sup>19</sup> Since both poverty and income inequality are both aspects of income distribution, we employ as dependent variables both Gini measures and also income shares of the top and bottom deciles of the population.

<sup>20</sup> All revenue mobilization reform shocks featured in our analysis are country-wide shocks.

<sup>21</sup> Another advantage of the local projection method compared to vector autoregression (autoregressive distributed lag) specifications is that the computation of confidence bands does not require Monte Carlo simulations or asymptotic approximations. One limitation, however, is that confidence bands at longer horizons tend to be wider than those estimated in vector autoregression specifications.

<sup>22</sup> Other papers that have employed one standard deviation bands include e.g. Giordano et al. (2007), Romer and Romer (2010), Bachmann and Sims (2012).

tax legislation and, therefore, are exogenous to the general economic conditions and to any indirect channel that may affect the realized tax policy. Technically these limitations are addressed in Section 5 with a series of robustness checks, including the use of an Instrumental Variable (IV) approach. For tax reforms, we rely on instruments from the political economy drivers of reforms. Regarding the potential non-exogeneity of income, we follow Cevik and Correa-Caro (2020) that instrument it using the growth rate of main trading partners.

## 4. Data and Stylized Facts

### 4.1. Income Distribution

Income inequality proxies, namely the Gini index, is obtained from the Standardized World Income Inequality Database (SWIID), constructed by Solt (2009) using the UN World Income Database and the Luxembourg Income Study. Taxes determine the disposable income available for consumption to the households and thus influence income distribution. However, the disposable income does not take into account indirect taxes (Karanfil and Ozkaya, 2013). This creates a limitation when only disposable income is considered. As a result, we look at both pre-tax-and-transfers and post-tax-and-transfers Gini indices.<sup>23</sup> According to Poterba (2007), this also mitigates the reverse causality problem since post-tax-and-transfers vary “mechanically” and “economically” with the fiscal system whereas the pre-tax-and-transfers measure vary solely through the endogenous responses of labor supply or the general equilibrium effect on factor prices. In fact, the SWIID provides comparable estimates for two definitions of the Gini coefficient—the first based on market income and the second net of taxes and transfers—on an annual basis. This allows us to assess income inequality before and after fiscal redistribution through tax reforms and provides comparable Gini figures across countries and over a long span of time. However, the imputation methodology to standardize observations collected from various sources makes these series subject to measurement uncertainty (Jenkins, 2015).<sup>24</sup> Ferreira et al. (2015) compared eight inequality datasets<sup>25</sup> to conclude that “although there is much agreement across these databases, there is also a non-trivial share of country/year cells for which substantial discrepancies exist” and that “the methodological differences [...] often appear to be driven by a fundamental trade-off between a wish for broader coverage on the one hand, and for greater comparability on the other.”<sup>26</sup>

As a complement, we use the top and bottom 10 percent income shares retrieved from the World Bank’s World Development Indicators (WDI).

---

<sup>23</sup> The Gini indicators based on disposable income cover the total market income received by all household members (gross earnings, self-employment income, capital income), plus the current cash transfers they receive, less income and wealth taxes, social security contributions and current transfers that they pay to other households.

<sup>24</sup> Multiple imputation methods are used which essentially rely on assuming that ratios between different inequality measures are constant, or stable, and can therefore be used to predict those variables when they are not observed (Solt, 2009).

<sup>25</sup> Five are microdata-based: CEPALSTAT, Income Distribution Database (IDD), LIS, PovcalNet, and Socio-Economic Database for Latin America and the Caribbean (SEDLAC); two are based on secondary sources: “All the Ginis” (ATG) and the World Income Inequality Database (WIID); and one is generated entirely through multiple-imputation methods: the Standardized World Income Inequality Database (SWIID).

<sup>26</sup> As this paper places a special emphasis on the Sub-Saharan African (SSA) region, we decided to maximize coverage. For instance, the WIID includes 350 inequality observations for SSA between 1960–2012 of which only five are labeled high quality, while the SWIID—which we use—includes 934 observations for this region and treats all of them as comparable in quality terms.

Guided by the tax reform data we focus on a panel of 45 developing countries between 2000–2015.<sup>27</sup> Based on this sample, Figure 2 shows the interquartile range of alternative proxies for income distribution. We observe that over the last 15 years inequality, as measured by disposable income has been on a downward trend but this fact is often obscured by the fact that market Gini has been increasing since the early 2010's. This points to a useful and powerful role of the tax-benefit redistributive systems in these countries in recent years (see bottom left panel).<sup>28</sup> As inequality and poverty, while different, are related concepts and go hand-in-hand, in the bottom right panel, we can see that the income share of the bottom 10 percent of the population has also been on the rise.

**Figure 2. Interquartile Range of Income Distribution Proxies over time, 2000–2015**



*Note:* Figure plots the average (mean), median, bottom and top quartiles (pctile\_25 and pctile\_75, respectively) of respective variables' distributions. Relative redistribution measures the difference between market and disposable Gini indices. The bottom income share corresponds to the income share of the bottom 10 percent of the population.

*Source:* SWIID and WDI.

<sup>27</sup> The list of countries by region is provided in the Appendix. More than 1/3 of the sample comprises of SSA countries.

<sup>28</sup> Redistribution is typically defined as the difference between market income and disposable income inequality. Some authors then express it as a percentage of market income inequality.

There is significant dispersion across economies in terms of income inequality. It is essential to analyze the time series properties of the data to avoid spurious results by conducting panel unit root tests. We check the stationarity of all variables by applying the Im-Pesaran-Shin (2003) procedure, which is widely used in the empirical literature dealing with non-stationary panels. The results, available upon request, indicate that the Gini indices used in the analysis are stationary after logarithmic transformation.

## 4.2. Tax Reforms

Countries determine the composition of their tax system by making policy changes to tax bases, tax rates and exemptions. The tax reform database put together by Akitoby et al. (2019) is now explored carefully in this paper. In identifying the episodes of large tax revenue mobilization, Akitoby et al. (2019) focused on countries with more tangible tax revenue mobilization results; (i) countries that have increased their tax-to-GDP ratios by a minimum of 0.5 percent each year for at least three consecutive years (or 1.5 percent within three years); (ii) countries with beyond average increases in their tax-to-GDP ratios; and/or (iii) countries with better tax performance compared with peers in the same income group (see original source for further details).

This tax reform database has several advantages for our own empirical purposes: it identifies the precise nature and exact timing of major tax actions in key areas of tax policy and revenue administration; identifies the precise tax reforms that underpin what otherwise looks like a gradual improvement in standard tax-to-GDP; identifies major reforms that truly led to increases in revenue, as opposed to just a long list of (small or not economically meaningful) policy changes. All these aspects of data are particularly useful for empirical analysis that seeks to identify, and then estimate, the dynamic effects of tax reform shocks. The strengths of this “narrative” tax reform database come with one limitation; because two large reforms in a given area (for example, a change in Personal Income Tax) can involve different specific actions (for example, tax introductions (“new taxes”), rate changes, threshold changes and changes to exemptions), only the average impact across major historical tax reforms can be estimated. It should be noted that the tax reform database provides no information regarding the current (or past) fiscal stance in the countries under scrutiny, which is not the purpose of this paper.

Tables 1–3 present stylized facts on reforms in the following categories: personal income tax (PIT), corporate income tax (CIT), goods and services taxes split between 3 subcategories (value added taxes (VAT), excises and general other goods and services taxes), trade taxes, property taxes and, finally, revenue administration.<sup>29</sup> The vast majority of tax revenue reforms in our sample were in the category of goods and services taxes and most reforms were implemented during the period 2010–2015 (Table 1). Exceptions are, e.g., tax reforms in the area of excises, trade or property, which were implemented more during 2000–2004. In SSA the majority of tax revenue reforms were in the area of goods and services, and during the 2000–2004 period. In the more recent period, SSA has been focusing more on CIT reforms.

---

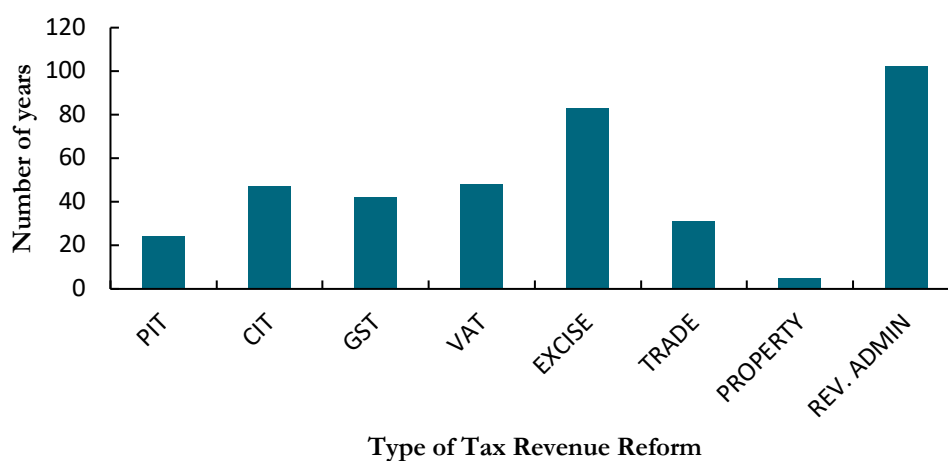
<sup>29</sup> Revenue administration reforms includes measures in 8 distinct areas, namely: i) management, governance and HR; ii) large taxpayers office and segmentation; iii) IT system; iv) registration and filling; v) audit and verification; vi) management of payment obligations; vii) improving compliance; viii) customs clearance. According to Akitoby et al. (2019), hiring more qualified staff, strategic planning and monitoring performance, focusing on training and strengthening tax legislation to empower revenue collection agencies were the most commonly implemented measures (77 percent of episodes).

**Table 1. Number of country-years with tax mobilization shocks by sub-periods**

Sample	2000–2004	2005–2009	2010–2015	2000–2004	2005–2009	2010–2015
	all	all	all	SSA	SSA	SSA
PIT	9	6	9	1	3	0
CIT	17	9	21	17	9	21
Goods and services taxes	67	32	74	27	9	17
GST	15	6	21	8	3	6
VAT	21	10	17	10	3	4
Excise	31	16	36	9	3	7
Trade	15	7	9	13	3	5
Property	4	1	0	4	0	0
Revenue administration	9	0	2	4	0	1

Figure 3 provides the number of years of tax reforms identified in the sample and illustrates the heterogeneity of reforms efforts by type. Excise reforms have been more frequently implemented. In general, fewer major reforms have been implemented in the areas of property taxes. Reforms in tax administration have been more the rule than the exception, accompanying a specific tax policy measure. Out of 119 years of tax reforms, only 17 corresponded to tax policy measures not accompanied by improvements in revenue administration.

**Figure 3. Number of country-years with tax revenue reforms by type  
(45 developing economies, 2000–2015)**



In terms of geographical distribution, emerging market economies did more reforms in the area of personal income tax, value-added and excises, while low-income countries focused more on trade taxes (Table 2). As for other categories of taxes both groups are comparable and also when it comes to revenue administration reforms.

**Table 2. Reform shocks by group of countries (number of tax reform country-years)**

	EME	LIC	SSA	Resource-Rich	Fragile
Number of countries	23	22	10	6	13
PIT	16	8	4	2	4
CIT	23	24	12	4	6
Goods and services taxes	99	74	53	14	49
GST	20	22	17	2	10
VAT	30	18	17	0	17
Excise	49	34	19	12	22
Trade	10	21	21	5	15
Property	1	4	4	0	4
Revenue administration	57	45	33	7	24

Finally, tax reforms have been more frequently implemented during periods of higher economic growth—that is when the real GDP growth in each country was above its historical average (Table 3).

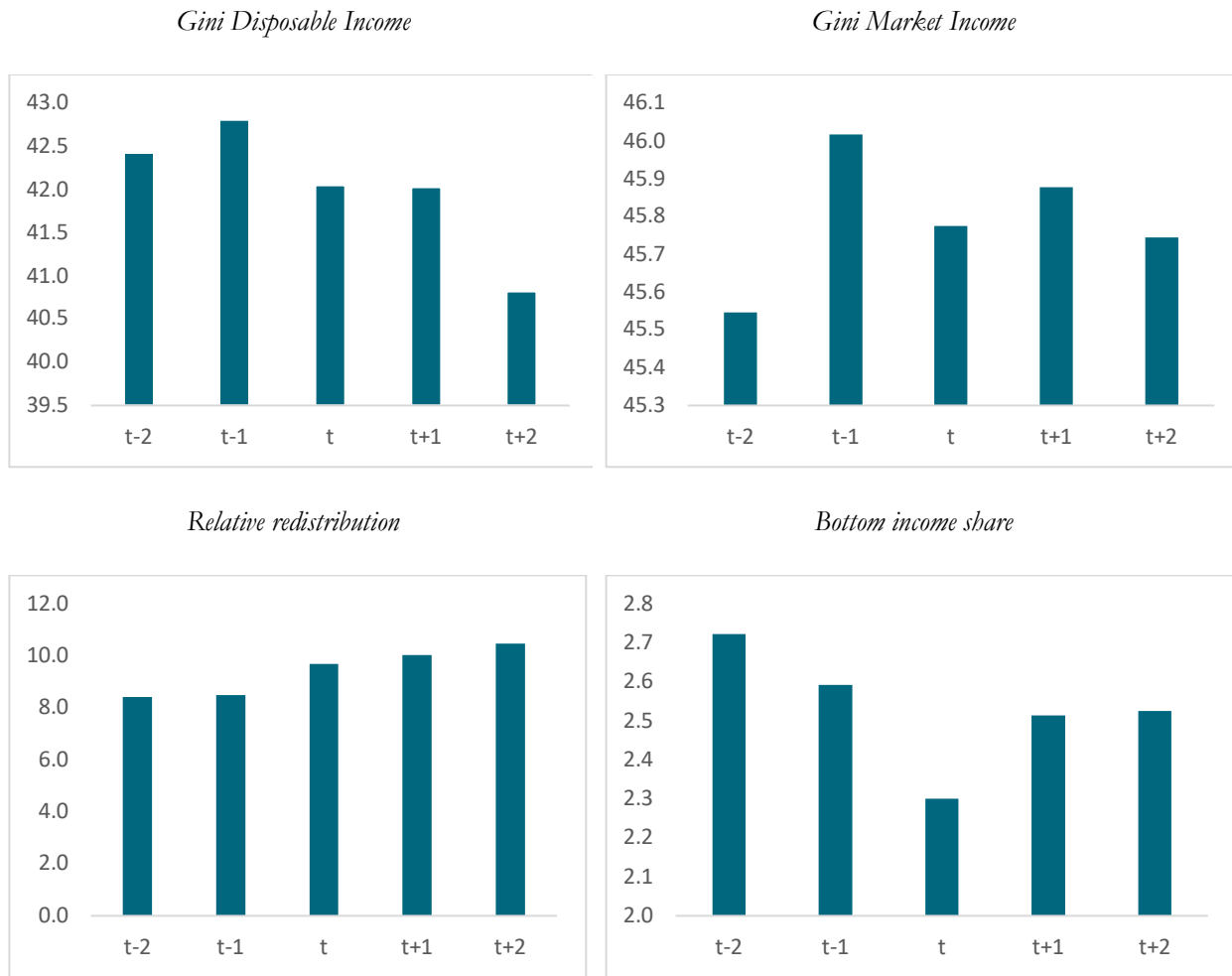
**Table 3. Tax Reform shocks over the business cycle (number of tax reform country-years)**

	Lower economic growth	Higher economic growth
PIT	8	16
CIT	20	27
Goods and services taxes	75	98
GST	17	25
VAT	20	28
Excise	38	45
Trade	10	21
Property	2	3
Revenue administration	48	54

*Note:* lower (higher) economic growth = real GDP growth below (above) the reforming country's historical average.

Descriptive statistics on different income distribution proxies before and after the beginning of these tax revenue reform episodes suggest that tax reforms have on average been associated with a decrease in the Gini index based on disposable income in the years after the reform (Figure 4). The fall in the Gini index based on disposable income is larger than the one based on market income, meaning an improvement in redistribution in the years after a tax reform, reflecting both the impact of taxes and increased capacity of governments to fund transfer programs. This is consistent with an increase in the income share of the bottom 10 percent of the population. Section 4 tests whether this (unconditional) suggestive evidence holds up to more formal tests.

**Figure 4. Evolution of income distribution proxies around tax revenue reforms**



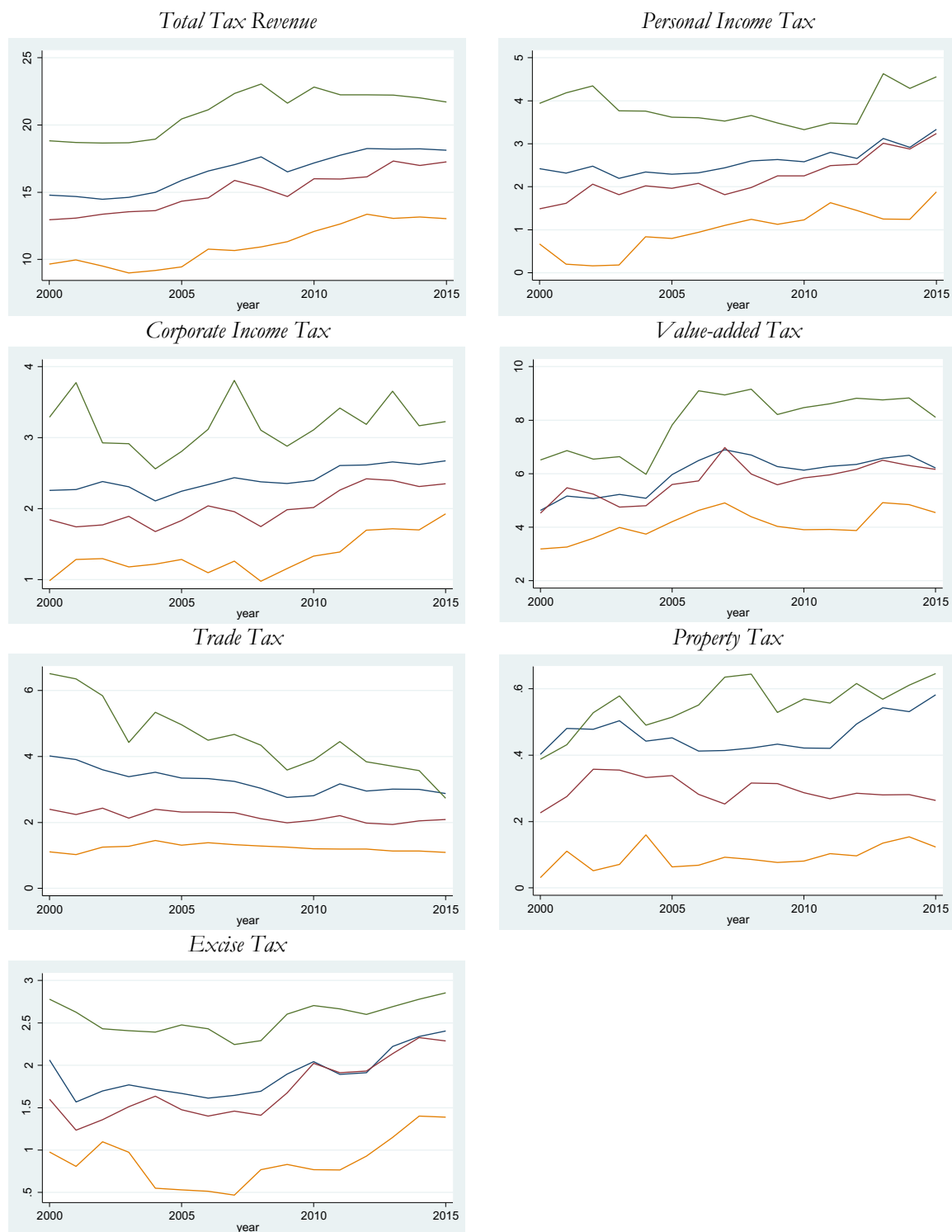
*Note:* x-axis in years; t=0 is the year of the tax reform shock.

### 4.3. Other Data

Real GDP comes from the IMF's World Economic Outlook (WEO) database and tax variables from the World Bank's World Development Indicators (WDI). Specifically, by analyzing different tax categories in percent of GDP for the sample of 45 countries in our panel we get the interquartile range dynamics depicted in Figure 5.



**Figure 5. Composition of tax revenues (% GDP) in 45 developing countries, 2000–2015**



*Note:* Green line denotes the 75<sup>th</sup> percentile of the respective distribution; the blue line denotes the mean; the red line denotes the median; and the yellow line denotes the 25<sup>th</sup> percentile of the respective distribution. All charts expressed in percentage of GDP.  
*Source:* IMF WEO.

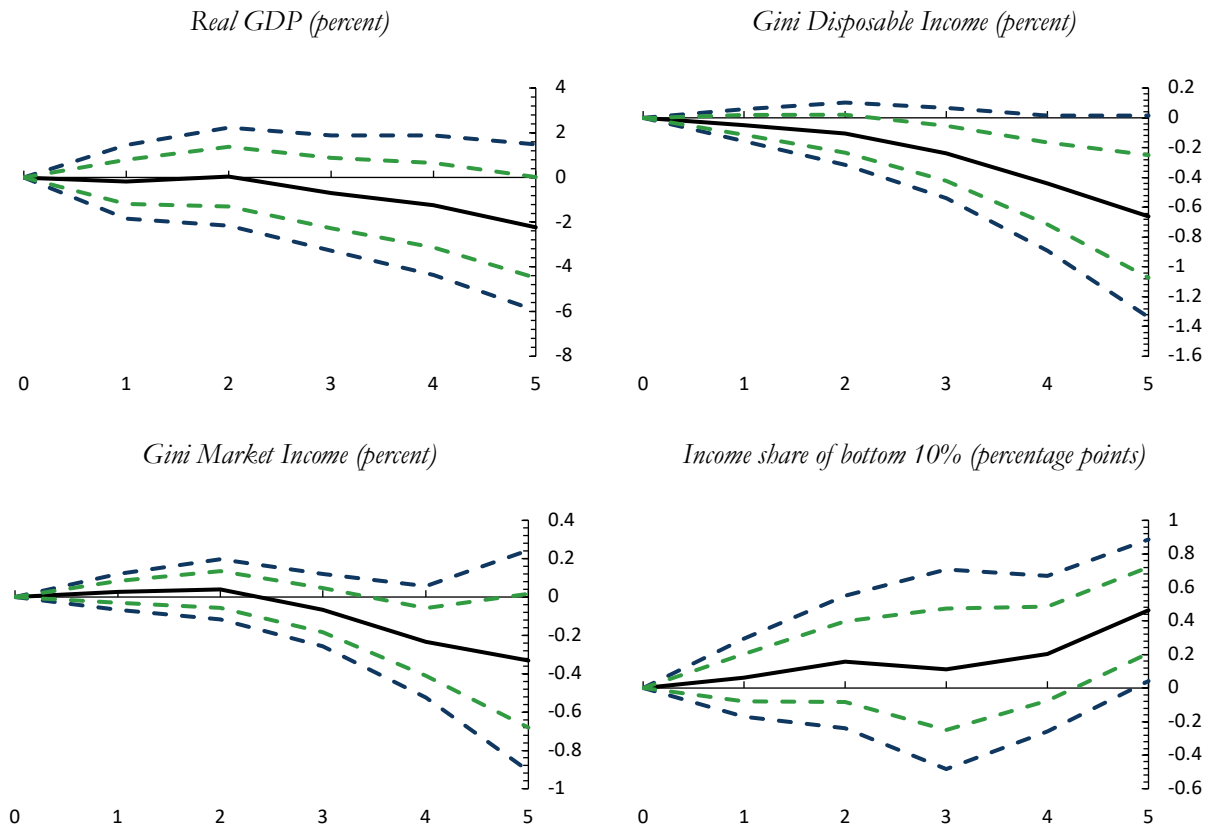
Note that according to the summary statistics present in Table A1 in the appendix, we will focus, in what follows, on those reforms with the largest distributional impact based on their importance measured in terms of corresponding tax shares to GDP. Taxes on goods and services, in the last year considered 2015, averaged 6 percent of GDP in the sample of countries considered. This was followed by PIT and then Trade and CIT. Lastly, property taxes accounted for a relatively small amount in GDP terms (only 0.6 percent).

## **5. Empirical Results**

### **5.1. Baseline**

Figure 6 shows the results of estimating equation (1) for alternative dependent variables. Both the 90 and 68 percent confidence bands are shown. After a general tax revenue mobilization reform takes place real GDP growth does not seem to be initially affected, starting a decline after 2 years but the effect is not statistically different from zero even after 5 years. In contrast, it seems that inequality goes down and the effect is particularly visible when using the Gini index based on disposable income. After 5 years the Gini falls by 0.7 percent (which corresponds to one standard deviation—the experience of Uruguay in 2002 or Guinea-Bissau in 2004) and this effect is statistically significant at the 90 percent confidence level. The effect is not as strong in magnitude and significance when employing the Gini index based on market income, but still the downward sloping reaction stands out. Complementary, a general tax reform can help improving the income share of the bottom 10 percent of the population by 0.5 percentage points (or two standard deviations—the experience of Kyrgyzstan in 2010) after 5 years. These effects show that there is merit in using the tax system for redistribution purposes. Note however that redistribution reflects not only the impact of taxes on economic agents who have the ability to pay them but also the effect of transfer programs.

**Figure 6. Impact of Tax Revenue Reforms on Different Variables**



*Note:* x-axis in years; t=0 is the year of the tax reform shock. Solid black lines denote the response to a tax reform shock, blue dashed lines denote 90 percent confidence bands and green dashed lines denote 68 percent confidence bands, based on standard errors clustered at country level.

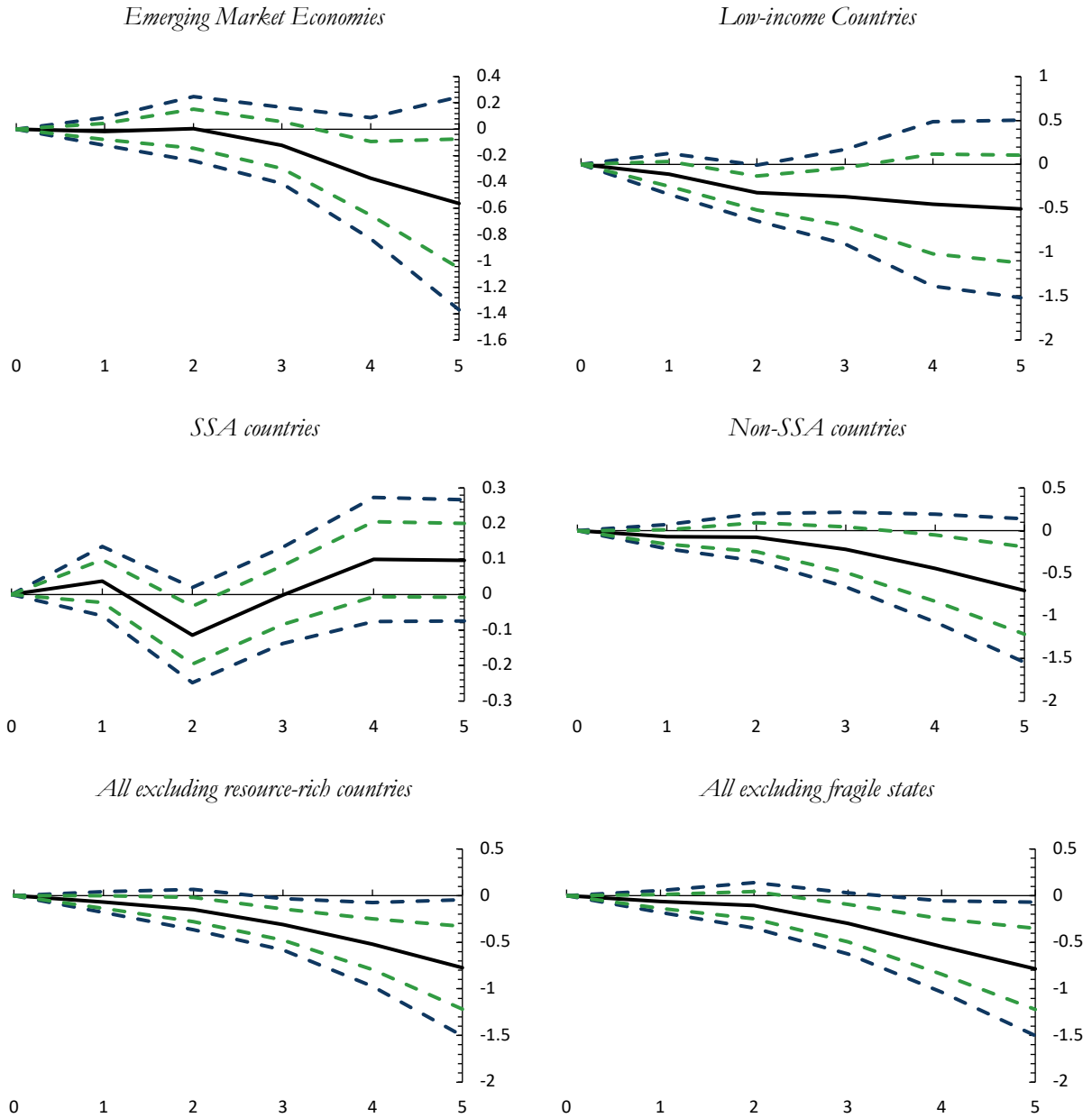
Splitting the sample of 45 countries by income group and geographical region and performing sensitivity with respect to country characteristics (such as being a fragile state<sup>30</sup> or a resource-rich economy<sup>31</sup>) yields the results in Figure 7 for the Gini index based on disposable income. We observe that the negative impact of tax reforms on inequality is strongest in emerging market economies possibly due to the fact that these countries' tax system is more mature and well-established. In the middle panel, we observe that the overall sample result is being driven by countries outside of-sub-Saharan region as the effect of tax reforms in sub-Saharan African is not statistically different from zero. This potentially highlights the lack of income distribution considerations embedded in tax reforms implemented in Africa (who happen to be largely fragile states) and/or the lack of transfer programs in these countries and/or inability of tax reforms to make a perceptible difference to tax-to-GDP ratios in these countries. Results are slightly stronger when removing either fragile states or those rich in natural resources, with a fall in the Gini index of 0.8 percent 5 years after the reform. Fragile states have extremely weak fiscal systems and resource-rich countries tend to rely less on non-resource

<sup>30</sup> In one of the sensitivity analyses conducted, tax reform episodes in fragile states are excluded given their rather unique social and economic characteristics. More recent research has shown (Baer and others, 2020) that tax reform design in fragile states should be different from that adopted in other developing countries. In our sample of 10 fragile states, 7 are in SSA.

<sup>31</sup> Recently, Davis (2019) tested the proposition that economies specializing in mining and oil production have high income inequality. He found it to be true in the case of mining but not in the case of oil production.

domestic taxes. That said, all in all, outliers or specific groups of countries do not seem to be affecting greatly the result found in Figure 6.

**Figure 7. Impact of Tax Revenue Reforms on the Gini Index (Disposable Income) by Group of countries (percent)**



*Note:* x-axis in years; t=0 is the year of the tax reform shock. Solid black lines denote the response to a tax reform shock, blue dashed lines denote 90 percent confidence bands and green dashed lines denote 68 percent confidence bands, based on standard errors clustered at country level.

A relevant question is whether the effect of tax revenue reforms on inequality varies by tax policy instrument. To address this question, we re-estimate our main equation (1) for tax reforms in the each of the following individual tax areas: personal income tax, corporate income tax, value-added tax, trade taxes, property taxes and revenue administration reforms.<sup>32</sup>

Results suggest that reforms in all of these individual tax categories are associated with a decline in the Gini index, with the effect being larger (in absolute value) for personal income tax as one would expect, followed by revenue administration reforms which tend to improve tax compliance, property taxes and corporate income taxes (Figure 8). In particular, by conducting an independent analysis on each of the eight revenue administration categories (cf. footnote 29), results show that measures dealing with large taxpayers office and segmentation of revenue administration and customs clearance seem to be the most important in lowering the Gini index in the short run and medium-run, respectively.<sup>33</sup>

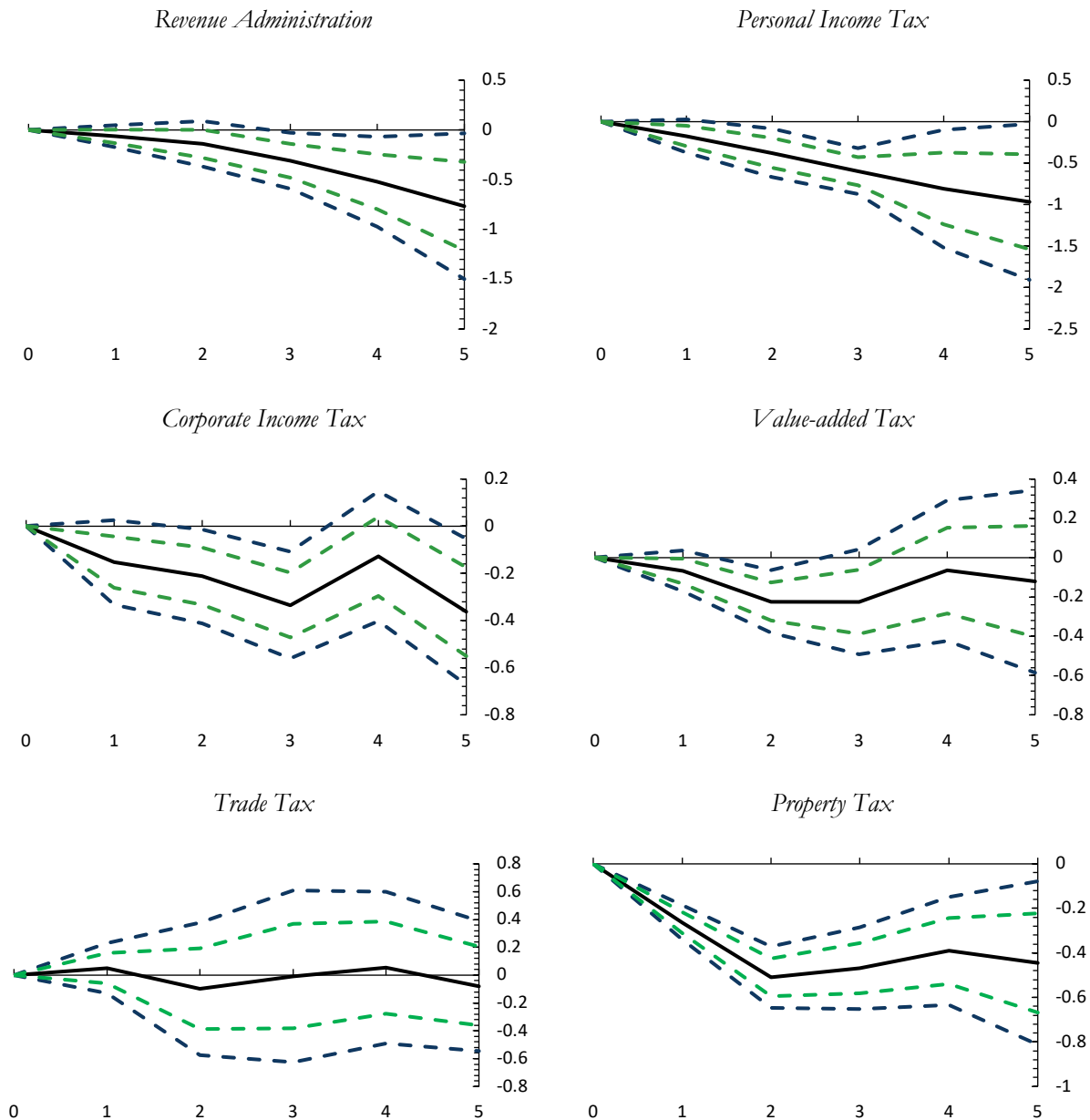
Note that our results confirm those found by Cevik and Correa-Caro (2020) for a sample of transition economies that income tax helped improve income distribution. Statistical significance of personal income tax is larger than when considering our aggregate tax reform variable (that adds up all of the reforms in all individual tax categories) because some of these individual sector reforms were implemented simultaneously. The negative impact of value-added and trade taxes is smaller and the latter also marked by a higher degree of uncertainty, as evidenced by wide confidence bands above and below zero. For SSA countries (not shown), we observe that revenue administration reforms did not have any statistically significant impact on income distribution over the period under scrutiny. In contrast, it seems that in the very short-run, PIT reforms led to a worsening of the Gini index.

---

<sup>32</sup> Other less important taxes such as excises or subsidies are omitted for reasons of parsimony.

<sup>33</sup> Results are shown in Figure A1 in the Appendix.

**Figure 8. Impact of Tax Revenue Reforms on the Gini Index (Disposable Income) (percent)**



*Note:* x-axis in years; t=0 is the year of the tax reform shock. Solid black lines denote the response to a tax reform shock, blue dashed lines denote 90 percent confidence bands and green dashed lines denote 68 percent confidence bands, based on standard errors clustered at country level.

## 5.2. Sensitivity and Robustness

Several sensitivity exercises and robustness checks were conducted—see the Appendix 2 for detailed description and discussion. First, we re-estimated equation (1) excluding country-fixed effects (Tuelings and Zubanov, 2010), including year fixed effects and country-specific time trends as additional control variables. Results are similar to, and not statistically different from, the baseline results (Figure A2 in Appendix 2).

Given the possible concern that results may suffer from omitted variable bias—reforms may be carried out because of past economic conditions or at the same time of other macroeconomic policy actions affecting the Gini index—we expanded the set of controls to include other macroeconomic variables that have been typically found to affect income distribution (see e.g. Jalles and Mello, 2019; Cevik and Correa-Caro, 2020). We observe that the effect on the Gini index based on disposable income is not statistically significantly different from the baseline result in Figure 6. As for the income share of the bottom 10 percent of the population, now the impulse response is negative but statistically not different from zero in contrast with the baseline result that found some positive impact 5 years after the tax reform (Figure A3 in Appendix 2). In addition, we controlled for GDP growth expectations. Results remained robust to the baseline ones reported earlier (Figure A4 in Appendix 2). Finally, to mitigate endogeneity concerns, we re-estimated equation (1) with an Instrumental Variable (IV) approach, using as instruments political economy variables found in the literature to induce reforms (Duval, Furceri and Miethe, 2018). Concerning the potential non-exogeneity of income we followed Cevik and Correa-Caro (2020) that instrumented it using the growth rate of main trading partners. With the IV results we observe that the negative (positive) impact of tax reforms on inequality (income share of the bottom 10 percent) is larger in magnitude and statistical significance relative to the baseline results in Figure 6 above (Figure A5 in Appendix 2). This seems to point to an under-estimation in absolute value of the previous set of coefficients, now corrected with an endogeneity-robust approach. We also redid then the estimations by tax category separately, accounting for both potential endogeneity of a given reform and GDP growth. We observe that the effects of revenue administration and PIT reforms on inequality are stronger than the baseline in Figure 7. Trade reforms seem to now have a beneficial impact on income distribution from year 4 onwards—a result which was previously absent before (Figure A6 in Appendix 2).

### 5.3. The Role of Business Cycle conditions

To explore the role of business cycle conditions for the effect of tax reforms on inequality, the dynamic response is now allowed to vary with the state of the economy, as follows:

$$y_{i,t+k} - y_{i,t-1} = \alpha_i + \beta_k^L F(z_{i,t}) R_{i,t} + \beta_k^H (1 - F(z_{i,t})) R_{i,t} + \theta M_{i,t} + \varepsilon_{i,t} \quad (2)$$

with

$$F(z_{it}) = \frac{\exp(-\gamma z_{it})}{1 + \exp(-\gamma z_{it})}, \quad \gamma > 0$$

in which  $z_{it}$  is an indicator of the state of the economy (the real GDP growth) normalized to have zero mean and unit variance. The weights assigned to each regime vary between 0 and 1 according to the weighting function  $F(\cdot)$ , so that  $F(z_{it})$  can be interpreted as the probability of being in a given state of the economy. The coefficients  $\beta_L^k$  and  $\beta_H^k$  capture the distributional impact of tax revenue reforms at each horizon  $k$  in cases of extreme recessions ( $F(z_{it}) \approx 1$  when  $z$  goes to minus infinity) and booms ( $1 - F(z_{it}) \approx 1$  when  $z$  goes to plus infinity), respectively.<sup>34 35</sup>

<sup>34</sup>  $F(z_{it})=0.5$  is the cutoff between weak and strong economic activity.

<sup>35</sup> We choose  $\gamma = 1.5$ , following Auerbach and Gorodnichenko (2012), so that the economy spends about 20 percent of the time in a recessionary regime—defined as  $F(z_{it}) > 0.8$ . Our results hardly change when using alternative values of the parameter  $\gamma$ , between 1 and 6.

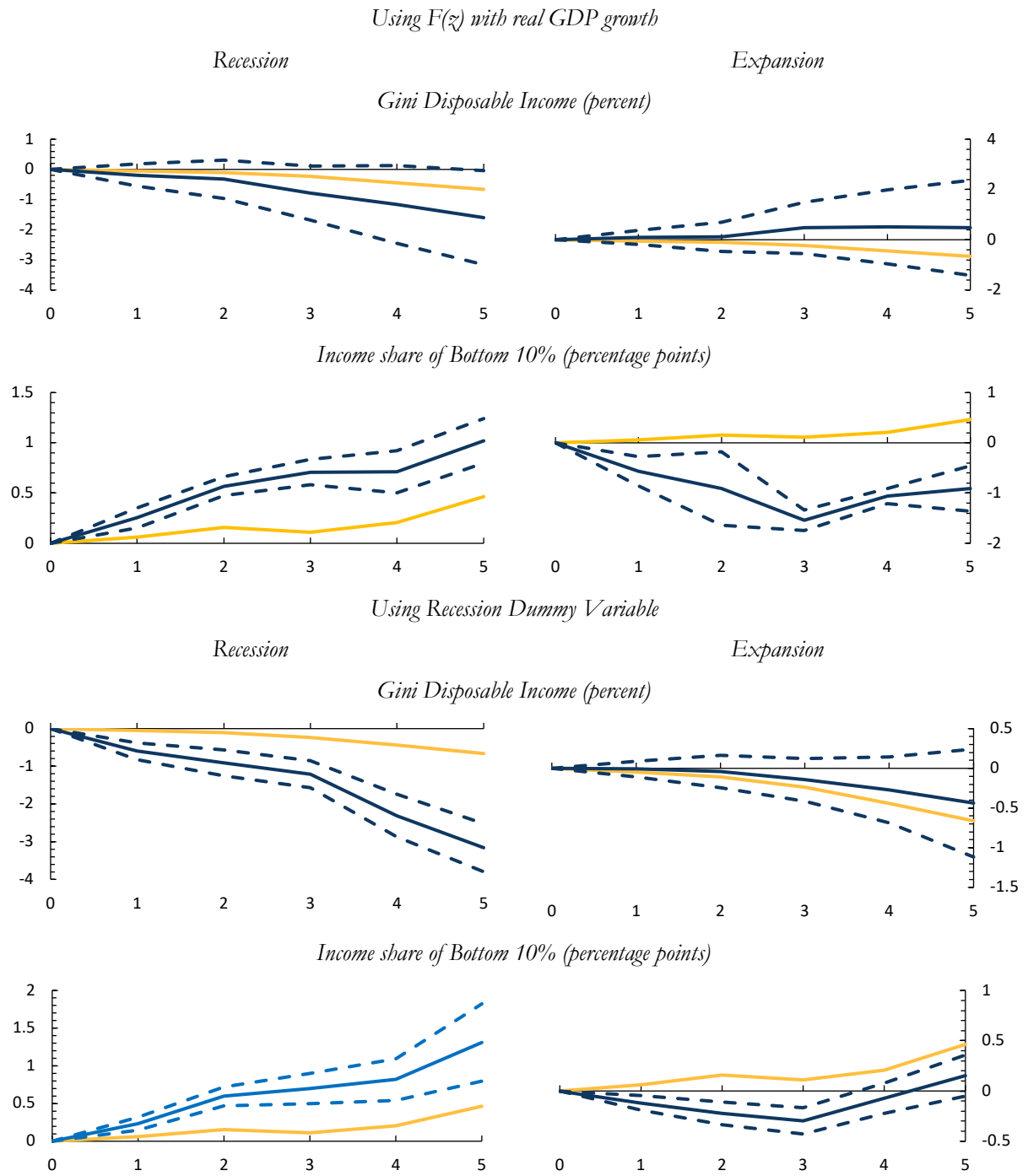
As discussed in Auerbach and Gorodnichenko (2012, 2013), the local projection approach to estimating non-linear effects is equivalent to the smooth transition autoregressive (STAR) model developed by Granger and Teräsvirta (1993). The advantage of this approach is twofold. First, compared with a model in which each dependent variable would be interacted with a measure of the business cycle position, it permits a direct test of whether the effect of the tax reform varies across different regimes such as recessions and expansions. Second, compared with estimating structural vector autoregressions for each regime, it allows the effect of tax reforms to change smoothly between recessions and expansions by considering a continuum of states to compute the impulse response functions, thus making the response more stable and precise.

Results suggest that the response of the Gini index to tax revenue reforms varies significantly depending on prevailing business conditions (Figure 9, panel a)). In order to reduce more rapidly income inequality and improve the income prospects of the poorest strata of the population, it is more effective to implement tax reforms when the economy is growing relatively slowly. This result is in line with the famous Churchill's claim to "never let a good crisis go to waste." This may also reflect the fact that fiscal policy in developing countries is typically pro-cyclical (Jalles, 2020) and that during a downturn, governments cut spending that paradoxically helps lower inequality because benefits of public spending are largely captured by the rich. During boom periods, the effect of such reforms on income distribution is zero but the share of income going to the bottom 10 percent suffers.

Results are also robust to re-estimating equation (2) without measuring business cycle conditions through a smooth transition function, but instead more simply through a dummy variable that takes value 1 when the GDP growth rate of the country considered is below its sample average and zero otherwise (Figure 9, panel b)). Results are in line with those in panel a) suggesting that our state-contingent results are not sensitive to the way business cycle is measured.



**Figure 9. State Contingent Regression: Impact from Tax Revenue Reforms over the Business Cyclez**



*Note:* x-axis in years;  $t=0$  is the year of the tax reform shock. Solid blue lines denote the response to a tax reform shock, blue dashed lines denote 90 percent confidence bands, based on standard errors clustered at country level. The solid yellow lines denote the unconditional (baseline) result for a given dependent variable.

## 5.4. Does the Size of the Tax System or the Size of the Government matter?

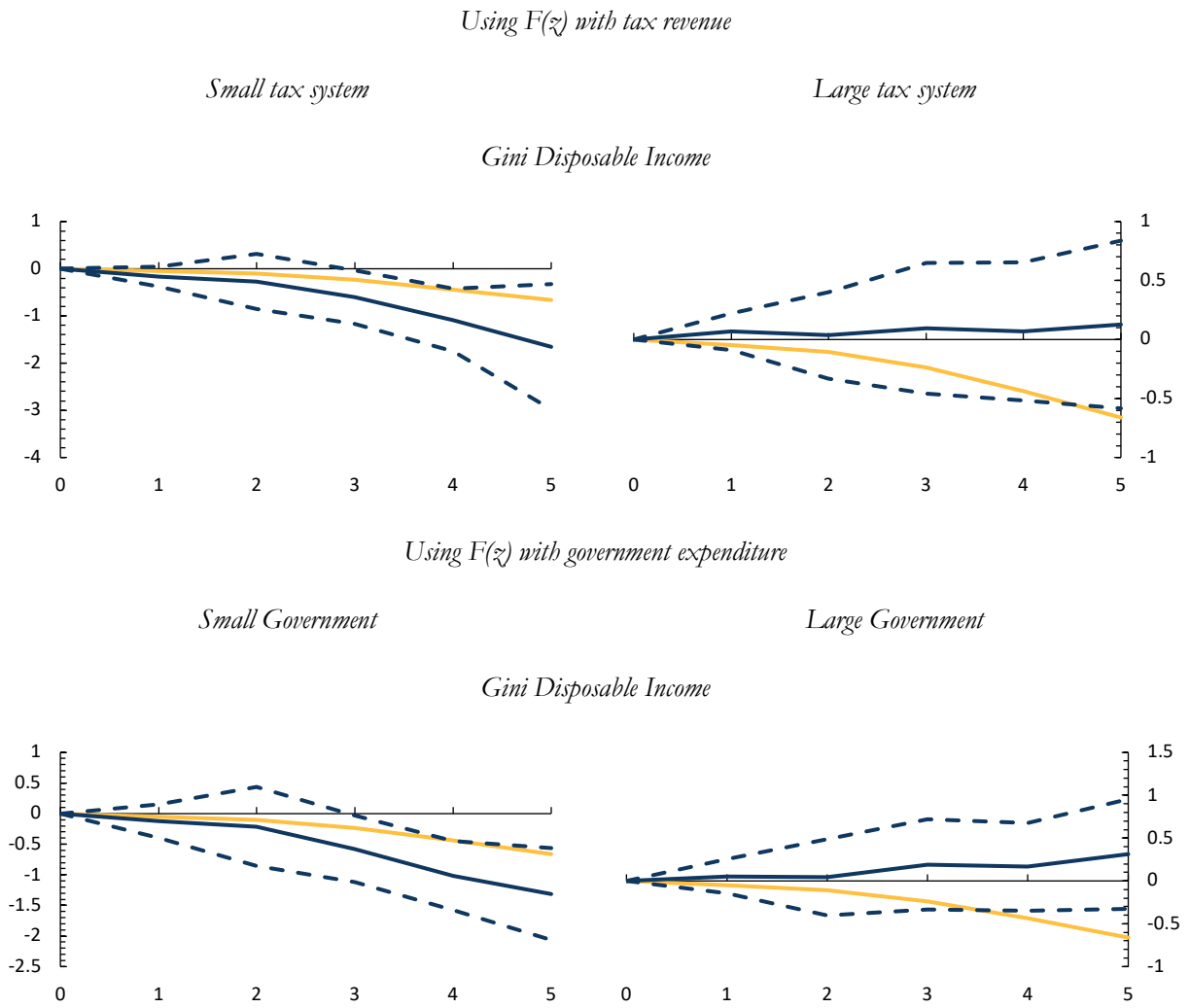
Martinez-Vasquez et al. (2010) find a non-linear effect of the tax ratio on income inequality depending on the size of the tax system. Focusing on a sample of 116 countries between 1972–2005, they find that the effect of tax ratio on income inequality is a function of the size of the taxation system. The results suggest a positive effect on income inequality in countries with a small tax system, but a negative effect in countries with a larger size taxation system. For the subsample of developing countries there was no statistically significant effect of the tax mix on income inequality. With this in mind, we consider an alternative version of equation (2) where instead of the state of the economy, we use an indicator of the size of the tax system (the tax revenue to GDP ratio). Here,  $\delta = 1$  is used to assess the role of the fiscal policy.<sup>36</sup> Results are displayed in Figure 10 top panel. We can observe that countries with smaller tax systems are in a better position to enact and implement tax reforms as they will have a larger beneficial impact on income distribution, compared with countries with larger tax systems (possibly as these have less room for maneuver in terms of e.g. increasing tax progressivity). In this sense our results support Martinez-Vasquez et al. (2010) claim.

Our last exercise has the premise that the ultimate purpose of a tax system is to raise sufficient revenue to finance its expenditure. In fact, taxes can also influence redistribution indirectly by raising the available funds for social transfers: larger governments reduce inequality more (Joumard et al., 2012; Fournier and Johansson, 2016; Causa and Hermansen, 2017). We now consider another alternative version of equation (2) where instead of the state of the economy, we use an indicator of the size of the government proxied by total government expenditure (% GDP). As in the case of the size of the tax system,  $\delta = 1$  is used. Note that using in such a STAR function an indicator of fiscal policy is not new. Auerbach and Gorodnichenko (2012, 2013) and Abiad, Furceri, and Topalova (2016) employed a similar approach but they looked at the nature of the prevailing fiscal stance by using shocks defined in terms of government consumption forecast errors. Results are displayed in Figure 10 bottom panel. We can observe that tax reforms implemented in countries with smaller governments have a larger impact in reducing inequality. As government size is typically negatively correlated with income inequality, tax reforms that aim at raising the amount of available funds at the disposal of the government, can help—e.g. through enlarged social program transfer schemes—to reduce income inequality, compared with a state that is already too large. In fact, the effects of tax reforms in countries with either big tax systems or governments is not statistically different from zero possibly because tax reforms in developing countries are correlated with spending cuts that actually reduce the size of these programs.

---

<sup>36</sup> The results do not qualitatively change for different values of  $\delta > 0$ .

**Figure 10. Tax and Government Size: Impact from Tax Revenue Reforms (percent)**



*Note:* x-axis in years;  $t=0$  is the year of the tax reform shock. Solid blue lines denote the response to a tax reform shock, blue dashed lines denote 90 percent confidence bands, based on standard errors clustered at country level. The solid yellow lines denote the unconditional (baseline) result for a given dependent variable.

## 6. Conclusion and Policy Implications

Domestic revenue mobilization is a fundamental component of any sustainable development strategy.<sup>37</sup> This is particularly salient in developing countries where low revenue levels are often one of the most important impediments to (inclusive) growth. More worrisome than the fact that in some developing countries revenue collection is stagnating, is the fact that revenue systems are becoming less fair.<sup>38</sup> At a time foreign aid is diminishing, it is paramount for developing countries to pay more attention to raising more revenue domestically in a fair manner. Revenues collected through the tax system are generally more stable and predictable than those coming from foreign aid or domestic non-tax sources. The contribution of taxes is essential to solidify ownership over development strategy and can strengthen the bonds of accountability and the social contract between citizens and their government and thus have a positive effect on governance. In this context, tax reforms have been promoted by International Financial Institutions in recent years as an important component of more general economic policy reform in many developing countries. However, results of such reforms can take a number of years to see significant effects in domestic revenue collection.

This paper shows new evidence that tax revenue reforms are associated with an improvement in income distribution by looking at a sample of 45 developing countries between 2000 and 2015. First, we observe that over the last 15 years, inequality—as measured by disposable income—has been on a downward trend but this fact is often obscured by the fact that market Gini has been increasing since the early 2010's. This points to a useful and powerful role of the tax-benefit redistributive systems in these countries in recent years. This is consistent with the fact that the vast majority of tax revenue reforms in our sample were implemented during the period 2010–2015. Moreover, reforms in tax administration have been more the rule than the exception, accompanying a specific tax policy measure. Furthermore, tax reforms have been more frequently implemented during periods of higher economic growth. Stylized facts aside, we find empirically, by means of estimating impulse response functions, that 5 years after a general tax reform, the Gini index falls by one standard deviation (less than one percent) and this effect is statistically significant. This result is driven by countries outside of sub-Saharan Africa as the effect of tax reforms on Sub-Saharan African countries income distribution is not statistically different from zero. Results are slightly stronger when either fragile states or those rich in natural resources are removed from the sample, reflecting the inappropriateness of tax reforms in fragile states. For all sample countries, a general tax reform can help raising the income share of the bottom 10 percent of the population by 0.5 percentage points after 5 years. We find that the most important tax reforms for distributional purposes are in the areas of personal income tax and revenue administration. However, revenue administration reforms in sub-Saharan Africa did not have any statistically significant impact on income distribution. It seems that in the very short-run, PIT reforms worsened the Gini in these countries, calling into question their design. Our results are robust to a battery of tests including the exclusion of country fixed effects, the addition of time effects and time trends, controlling for other short-term drivers of inequality (including expectations about future growth). Moreover, we also conducted endogeneity robust estimations. We also found that the response of the Gini index to tax revenue reforms varies significantly depending on prevailing business conditions. In order to reduce more rapidly income inequality and improve

---

<sup>37</sup> According to Mascagni, Moore and McCluskey (2014) governments in developing countries need additional financial resources to address the huge development challenges they face.

<sup>38</sup> The lack of progress in revenue generation is creating significant policy challenges in many developing countries because it is not keeping the pace with planned expenditures. This has resulted in cuts to spending or increasing deficits or in increased use of non-concessional finance to cover the gap. The increase use of non-concessional finance has meant that interest payments on debts have grown substantially.

the income prospects of the poorest strata of the population, it is more effective to implement tax reforms when the economy is growing relatively slowly. Finally, the smaller the government and the smaller the tax system, the larger the beneficial impact of tax reforms on income distribution.

Increasing tax revenues is an ambitious and complex task that depends upon several factors (such as the efficiency of tax systems, the level of institutional capacity, the degree of compliance, the power of tax administrations, among others). Policy-wise there is great potential to capture more revenue in better ways in many developing countries: by eliminating wasteful tax incentives or improving the effectiveness of direct taxation, such as property, wealth or corporate taxation. That said, the design of policy must balance the efficiency and distributional costs of different tax instruments available to the government.

Finally, our results leave some questions open for future research. Perhaps most importantly, cross-country distributional differences go way beyond the tax revenue area covered in this paper and include, among others, reforms in areas such as financial markets, pension and healthcare systems, and international trade and foreign direct investment. A more systematic investigation of their aggregate effects on income inequality would therefore be welcomed. In addition, the effect of tax reforms on distributional outcomes is likely to vary across countries depending on their specific structural characteristics, particularly those of a political economy nature.<sup>39</sup> Further investigating these could shed light on the extent and underlying drivers of cross-country heterogeneity in the distributional impacts of reforms. This paper did not elaborate on efficiency considerations nor did it look at whether the tax composition is optimal from a welfare point of view. This could also be an avenue of future research. Lastly, and relatedly to the last point, this broad macroeconomic research agenda should be supported by more micro-econometric analyses at household and firm levels, in order to shed light on the mechanisms through which tax revenue reforms affect the distribution of incomes.

---

<sup>39</sup> Political barriers are in part responsible for a reliance on narrow technocratic reforms which are being ineffective at raising more revenues.

## References

- Abiad, A., Furceri, D., Topalova, P. (2015), “The macroeconomic effects of public investment: evidence from advanced economies,” *Journal of Macroeconomics*, 50, 224–240.
- Acosta-Ormaechea, S., Yoo, J. (2019), “Tax Composition and Growth: A Broad Cross-Country Perspective,” *German Economic Review*, 20(4), 70–106.
- African Development Bank Group Domestic (AfDB). (2010), “Resource Mobilization for Poverty Reduction in East Africa: Kenya Case Study,” <http://www.AfDB.org>
- Agnello, L., Castro, V., Jalles, J.T., Sousa, R. (2017), “Income inequality, fiscal stimuli and political (in)stability,” *International Tax Public Finance*, 24, 484–511.
- Aidt, T.S., Jensen, P. (2009), “Tax structure, size of government, and the extension of the voting franchise in Western Europe, 1860–1938.” *International Tax and Public Finance* 16, 362–394.
- Akitoby, B., Baum, A., Hackney, C., Harrison, O., Primus, K., Salins, V. (2019), Tax revenue mobilization episodes in developing countries,” *Policy Design and Practice*, 3(1).
- Alesina, A., Rodrik, D. (1994). “Distributive Politics and Economic Growth.” *Quarterly Journal of Economics*, 109(2), 465–90.
- Alesina, A., Roubini, N. (1992), “Political Cycles in the OECD,” *Review of Economic Studies*, 59(4), 663–688.
- Alstadsaeter, A., Johannesen, N., Zucman, G. (2019). “Tax Evasion and Inequality.” *American Economic Review*, 109(6), 2073–2103.
- Arnold, J.M., Brys, B., Heady, C., Johansson, A., Schweltnus, C., Vartia, L. (2011), “Tax Policy for Economic Recovery and Growth,” *Economic Journal*, Vol. 121, pp. F59–F80.
- Atkinson, A. (2015), “Inequality: What Can Be Done?” Cambridge, MA: Harvard University Press.
- Atkinson, A., Leigh, A., (2013), “The distribution of top incomes in five Anglo-Saxon Countries over the Long-run,” *Economic Record*, 89(S1), 31–47.
- Atkinson, A., Stiglitz, J. (1976), “The design of tax structure: direct versus indirect taxation.” *Journal of Public Economics*, 6(1), 55–75.
- Atkinson, A., T. Piketty, Saez, E. (2011). “Top Incomes in the Long-Run of History,” *Journal of Economic Literature*, 49(1), 3–71.
- Auerbach, A., Gorodnichenko. Y. (2012), “Output Spillovers from Fiscal Policy,” *American Economic Review*, 103(3), 141–146.
- Auerbach, A., Gorodnichenko. Y. (2013), “Measuring the Output Responses to Fiscal Policy,” *American Economic Journal: Economic Policy*, 4 (2), 1–27.

- Auerbach, A., Hassett, K. (1991), "Recent U.S. Investment Behavior and the Tax Reform Act of 1986: A Disaggregate View," *Carnegie-Rochester Conference Series on Public Policy*, 35, 185–215.
- Bachmann, R., Sims, E. (2012), "Confidence and the Transmission Mechanism of Government Spending Shocks," *Journal of Monetary Economics* 59(3), 235–249.
- Baer Katherine, S. Gupta, S. Pattanayak and M. Mansour, (2020) "Building Fiscal Institutions in Fragile States-A Two-Step Approach," *Macroeconomic Policy in Fragile States*, edited by Ralph Chami, Raphael Espinoza and Peter Montiel, Oxford University Press, Oxford.
- Bahl, R. W., Bird, R. M. (2008), "Tax Policy in Developing Countries: Looking Back and Forward." *National Tax Journal*, 61(2), 279–301.
- Barnard, A. (2010), "The effect of taxes and benefits on household income 2008/2009." *Office of National Statistics UK Statistical Bulletin* 1–8.
- Barro, R. (2000), "Inequality and Growth in a Panel of Countries," *Journal of Economic Growth*, 5 5–32.
- Bastagli, F., Coady, D., Gupta, S., (2015), "Fiscal redistribution in developing countries: overview of policy issues and options," in "Inequality and Fiscal Policy," edited by B. Clements, R. de Mooij, S. Gupta, M. Keen, Washington DC.
- Bénabou, R. (1996), "Inequality and growth," *NBER Macroeconomics Annual*, Volume 11, 11–92.
- Berg, A., Ostry, J. (2017), "Inequality and Unsustainable Growth: Two Sides of the Same Coin?" *IMF Economic Review*, 65(4), 792–815.
- Bird, R. (2005), "Redistribution via Taxation: Role of the Personal Income Tax," working papers number 508, University of Toronto: International Studies Program.
- Bird, R., Zolt, E. (2014), "Redistribution via Taxation: The Limited Role of the Personal Income Tax in Developing Countries," *Annals of Economics and Finance*, 15(2), 625–683.
- Boix, C., (2001), "Democracy, development, and the public sector." *American Journal of Political Science*, 45, 1–17.
- Bourguignon, F. (2004). "The Poverty-Growth-Inequality Triangle." Washington D.C., World Bank.
- Burman, L. (2005). "Taxes and Inequality," *Tax Law Review*, 66.
- Cacciatore, M., Duval, R., Fiori, G., Ghironi, F. (2016), "Market Reforms in the Time of Imbalance." *Journal of Economic Dynamics and Control*, 72 (C), 69–93.
- Casale, D. (2012), "Indirect taxation and gender equity: Evidence from South Africa." *Feminist Economics*, 18(3), 25–54.
- Causa, O., Hermansen, M. (2017), "Income Redistribution through Taxes and Transfers across OECD Countries," *OECD Economics Department Working Papers*, OECD Publishing, forthcoming.

- Cetrángolo, O., J.C. Gómez Sabaini (2007), “La tributación directa en América Latina y los desafíos a la imposición sobre la renta,” Serie Macroeconomía del Desarrollo no. 60, Santiago de Chile, CEPAL.
- Cevik, S. and Correa-Caro, C., (2019), “Growing (un)equal: fiscal policy and income inequality in China and BRIC,” *Journal of the Asia Pacific Economy* (forthcoming).
- Chu, K., Davoodi, H., Gupta, S. (2000), “Income distribution and tax and government social spending policies in developing countries.” IMF Working Paper series No. 00/62, Washington DC.
- Cingano, F. (2014), “Trends in Income Inequality and its Impact on Economic Growth,” OECD Social, Employment and Migration Working Papers, No. 163, OECD Publishing.
- Clements, B., De Mooij, R., Gupta, S., Keen, M. (2015), “Inequality and Fiscal Policy,” Washington DC.
- Coady, D., de Mooij, R., Shang, B. (2015), “Inequality and Fiscal Redistribution in advanced economies” in “Inequality and Fiscal Policy” edited by B. Clements, R. de Mooij, S. Gupta, M. Keen, Washington DC.
- Cornia, G.A, J.C. Gómez-Sabaíni, B. Martorano (2011) “A New Fiscal Pact, Tax Policy Changes and Income Inequality.” WIDER Working Paper 2011/70. Helsinki: UNUWIDER. Available at: <https://www.wider.unu.edu/sites/default/files/wp2011-070.pdf>
- Correia, I. (2007), “The Effects on Equity of an Increase in the Value-Added Tax,” Retrieved from [http://www.bportugal.pt/en-US/EstudosEconomicos/Publicacoes/BoletimEconomico/BEAnteriores/Documents/bol\\_primavera07\\_e.pdf#page=83](http://www.bportugal.pt/en-US/EstudosEconomicos/Publicacoes/BoletimEconomico/BEAnteriores/Documents/bol_primavera07_e.pdf#page=83)
- Davis, G. (2019), “Large-sample evidence of income inequality in resource-rich nations,” *Mineral Economics*, (forthcoming)
- de Mello, L. Brezzi, M. (2016), “Inequalities in Latin America: Trends and implications for Policy.” *Hacienda Publica Espanola*. 219.
- Deaton, A., Paxson, C. (1997), “The effects of economic and population growth on national saving and inequality,” *Demography*, 34, 97–114.
- DeFina R.H., Thanawala K. (2004), “International evidence on the impact of transfers and taxes on alternative poverty indexes,” *Social Science Research*, 33, 311–338.
- Diamond, P. A., Mirrlees, J. A. (1971), “Optimal taxation and public production I: Production efficiency,” *American Economic Review*, 61(1), 8–27.
- Dollar, D., Kraay, A., (2004), “Trade, growth and poverty,” *Economic Journal*, 114, F22–F49.
- Drucker, L., Z. Krill, Geva, A. (2017), “The Impact of Tax Composition on Income Inequality and Economic Growth,” ILO Working Paper Series No. 19.
- Duval, R. Furceri, D. (2018), “The Effects of Labor and Product Market Reforms: The Role of Macroeconomic Conditions and Policies.” *IMF Economic Review*, 66, 31–69.



- Duval, R., Furceri, D., Miethé, J. (2018). “The Needle in the Haystack: What Drives Labor and Product Market Reforms in Advanced Countries?” IMF Working Papers 18/101, International Monetary Fund.
- Engel, E. M., Galetovic, A., Raddatz, C. E. (1999), “Taxes and income distribution in Chile: some unpleasant redistributive arithmetic,” *Journal of Development Economics*, 59(1), 155–192.
- Feenberg, D. R., J. M. Poterba (1993), “Income inequality and the incomes of very high-income taxpayers: evidence from tax returns.” in Poterba, J. M. (ed.), *Tax Policy and the Economy*, 7, 145–177.
- Feenberg, D., Poterba, J. (1993), “Income Inequality and the Incomes of Very High-Income Taxpayers: Evidence from Tax Returns,” *Tax Policy and the Economy*, 7, 145–177.
- Feenberg, D., Poterba, J. (2000), “The Income and Tax Share of Very High-Income Households, 1960–1995.” *American Economic Review*, 264–270
- Feldstein, M. (1995), “The effect of marginal tax rates on taxable income: A panel study of the 1986 Tax Reform Act,” *Journal of Political Economy* 103, 551–572.
- Feldstein, M. (1999), “Tax avoidance and the deadweight loss of the income tax,” *Review of Economics and Statistics* 81(4), 674–680.
- Ferreira, F., Lustig, N., Teles, D., (2015), “Appraising cross-national income inequality databases: an introduction,” IZA Working Paper Series No. 9468.
- Fournier, J. M., Johansson, A. (2016), “The Effect of the Size and the Mix of Public Spending on Growth and Inequality,” OECD Economics Department Working Papers, No. 1344, OECD Publishing, Paris.
- Frank M. W. (2009). “Inequality and Growth in the United States: Evidence from a New State-Level Panel of Income Inequality Measure,” *Economic Inquiry*, 47(1), 55–68
- Frey, C., C. A. Schaltegger (2016), “Progressive taxes and top income shares: A historical perspective on pre- and post-tax income concentration in Switzerland.” *Economics Letters* 148, 5–9.
- Gale, W. (1996), “The Kemp Commission and the Future of Tax Reform,” *Tax Notes*, 70(6), 717–729.
- Galindo, A. J., Pombo, C. (2011), “Corporate Taxation, Investment and Productivity: A Firm Level Estimation,” *Journal of Accounting and Taxation*, 5(7), 158–161.
- Gemmell, N., Kneller, R., Sanz, I. (2014), “The Growth Effects of Tax Rates in the OECD,” *Canadian Journal of Economics*, 47, 1–39
- Gemmell, N., R. Kneller, Sanz, I. (2011), “The Timing and Persistence of Fiscal Policy Impacts on Growth: Evidence from OECD Countries,” *Economic Journal*, 121, F33–F58.
- Giordano, R., Momigliano, S., Neri, S., Perotti, R. (2007), “The Effects of Fiscal Policy in Italy: Evidence from a VAR Model.” *European Journal of Political Economy* 23(3), 707–733.

- Giuliano, Paola, Prachi Mishra and Antonio Spilimbergo (2013) “Democracy and Reforms: Evidence from a New Dataset,” *American Economic Journal: Macroeconomics*, 5(4), 179–204.
- Goldin, C., and R. Margo (1992) “The Great Compression: The Wage Structure in the United States at Mid-Century,” *Quarterly Journal of Economics*, 1–34.
- Granger, C., Terasvirta, T. (1993). “Modeling Nonlinear Economic Relationships.” Oxford University Press.
- Guzi, M., Kahanec, M. (2018), “Income inequality and the size of Government: a causal analysis,” IZA Discussion Paper Series No. 12015.
- Haggard, S., Webb, S. (1994), “Voting for Reform: Democracy, Political Liberalization, and Economic Adjustment.” New York: Oxford University Press.
- Hanni, M., R. Martner Fanta, A. Podestá (2015), “The Redistributive Potential of Taxation in Latin America.” *CEPAL Review*, 116(August): 7–26.
- Hausman, J. (1985), “Taxes and Labor Supply,” in A. Auerbach and M. Feldstein (eds.), *Handbook of Public Economics*, Amsterdam: Elsevier.
- Higgins, S., Lustig, No. (2016), “Can a poverty-reducing and progressive tax and transfer system hurt the poor?” *Journal of Development Economics*, 122, 63–75.
- Ilaboya, O. J., Ohonba, N. (2013). “Direct versus Indirect Taxation and Income Inequality.” *European Journal of Accounting Auditing and Finance Research* 1, 1:15.
- Im, K., Pesaran, H., and Y. Shin, (2003), “Testing for Unit Roots in Heterogeneous Panels,” *Journal of Econometrics*, 115, 53–74.
- IMF (2014), “Fiscal Policy and Income Inequality.” IMF Policy Paper <https://www.imf.org/external/np/pp/eng/2014/012314.pdf>
- IMF (2019), *World Economic Outlook*, Chapter 3: Reigniting Growth in Emerging Market and Low-Income Economies: What Role for Structural Reforms?, October, Washington DC.
- Jalles, J. T., Mello, L. (2019), “Cross-country evidence on the determinants of inclusive growth episodes,” *Review of Development Economics*, 23(4), 1818–1839.
- Jalles, J. T. (2020), “Explaining Africa’s Public Consumption procyclicality: Revisiting Old Evidence,” *International Finance* (forthcoming)
- Jiménez, J.P, J.C. Gómez Sabaini, A. Podestá (2010), “Evasión y equidad en América Latina,” Documento de Proyecto LC/W. 309, CEPAL, Santiago de Chile
- Johannesen, N., Zucman, G. (2014). “The End of Bank Secrecy? An Evaluation of the G20 Tax Haven Crackdown.” *American Economic Journal: Economic Policy*, 6(1), 65–91.

- Johansson, Å. (2016), “Public Finance, Economic Growth and Inequality: A Survey of the Evidence” OECD Economics Department Working Papers, No. 1346, OECD Publishing, Paris.
- Jordà, O. (2005), “Estimation and Inference of Impulse Responses by Local Projections,” *American Economic Review*, 95(1), 161–82.
- Jordà, Ò., Taylor, A. (2016): “The time for austerity: estimating the average treatment effect of fiscal policy,” *Economic Journal*, 126, 219–255.
- Joumard, I., M. Pisu, Bloch, D. (2012), “Tackling Income Inequality: The Role of Taxes and Transfers,” *OECD Journal: Economic Studies*.
- Kaldor, N. (1955), “Alternative Theories of Distribution,” *Review of Economic Studies*, 23 (2), 83–100.
- Kaldor, N. (1963), “Will Underdeveloped Countries Learn to Tax?” *Foreign Affairs*, 41: 410–19
- Karanfil, F., Özkaya, A. (2013) “Indirect Taxes, Social Expenditures and Poverty: What Linkage?” *EGE Academic Review*, 13(3), 337–350.
- Kayizzi-Mugerwa, S. (2001), "Globalisation, Growth and Income Inequality: The African Experience," OECD Development Centre Working Papers 186, OECD Publishing.
- Kenny, L.W., Winer, S. L. (2006), “Tax systems in the world: an empirical investigation into the importance of tax bases, administration costs, scale and political regime.” *International Tax and Public Finance* 13, 181–215.
- KNBS and SID (2013), “Exploring Kenya’s Inequality—Pulling Apart or Pooling Together?” Kenya National Bureau of Statistics (KNBS) and Society for International Development (SID), Nairobi, Kenya. ISBN: 978-9966-029-19-5.
- Kneller, R., M. Bleaney, Gemmell, N. (1999), “Fiscal Policy and Growth: Evidence from OECD Countries,” *Journal of Public Economics*, 74(2).
- Krugman, P. (2014), “Now That’s Rich.” *New York Times*, May 9.
- Martínez-Vázquez, J., V. Vulovic, Moreno Dodson, B. (2012), “The Impact of Tax Expenditure Policies on Income Distribution: Evidence from a Large Panel of Countries,” *Hacienda Pública Española*, 200(1), 95–130.
- Mascagni, G., Moore, M., McCluskey R. (2014), “Tax Revenue Mobilisation In Developing Countries: Issues and Challenges,” European Union.
- McNabb, K., LeMay-Boucher, P. (2014), “Tax Structures, Economic Growth and Development,” ICTD Working Paper, No. 22.
- Milanovic, B. (2002), “True World Income Distribution, 1988 and 1993: First Calculation Based on Household Surveys Alone,” *Economic Journal*, 112 (476), 51–92.
- Milanovic, B. (2005) “Worlds Apart: Global and International Inequality, 1950–2000.” Princeton University Press, Princeton, NJ.

Musgrave, Richard A. (1959), "The Theory of Public Finance. A Study in Public Economy," McGraw-Hill, New-York, Toronto and London.

Obadic, A., Šimurina, N., Sonora, R. J. (2014), "The effects of tax policy and labour market institutions on income inequality." In Proceedings of Rijeka Faculty of Economics, *Journal of Economics and Business*, 32(1), 121–140).

Okner, B. A. (1975), "Individual Taxes and the Distribution of Income," in *The Personal Distribution of Income and Wealth*," National Bureau of Economic Research.

Ortiz, I., Cummins, M. (2011), "Global Inequality: Beyond the bottom billion—A rapid review of income distribution in 141 countries." UNICEF Social and Economic Policy Working Paper.

Ostry, J., Berg, A., Tsangarides, C., (2014), "Redistribution, inequality and Growth," IMF Staff Discussion Note, 14/02, Washington DC

## Appendix 1. List of Countries by Region

Sub-Saharan Africa (# 17): Burundi, Cabo Verde, Central African Republic, Comoros, Republic of Congo, Gambia, Guinea-Bissau, Guinea, Liberia, Malawi, Rwanda, Seychelles, Senegal, Sierra Leone, Namibia, Uganda, Burkina Faso

Asia (# 8): Cambodia, Laos, Maldives, Nepal, Philippines, Solomon Islands, Tonga, Tuvalu.

Latin America (# 10): Ecuador, Nicaragua, Paraguay, Uruguay, Bahamas, Barbados, Dominica, Guyana, Belize, Jamaica

Commonwealth of Independent States (# 5): Armenia, Georgia, Kyrgyzstan, Moldova, Ukraine

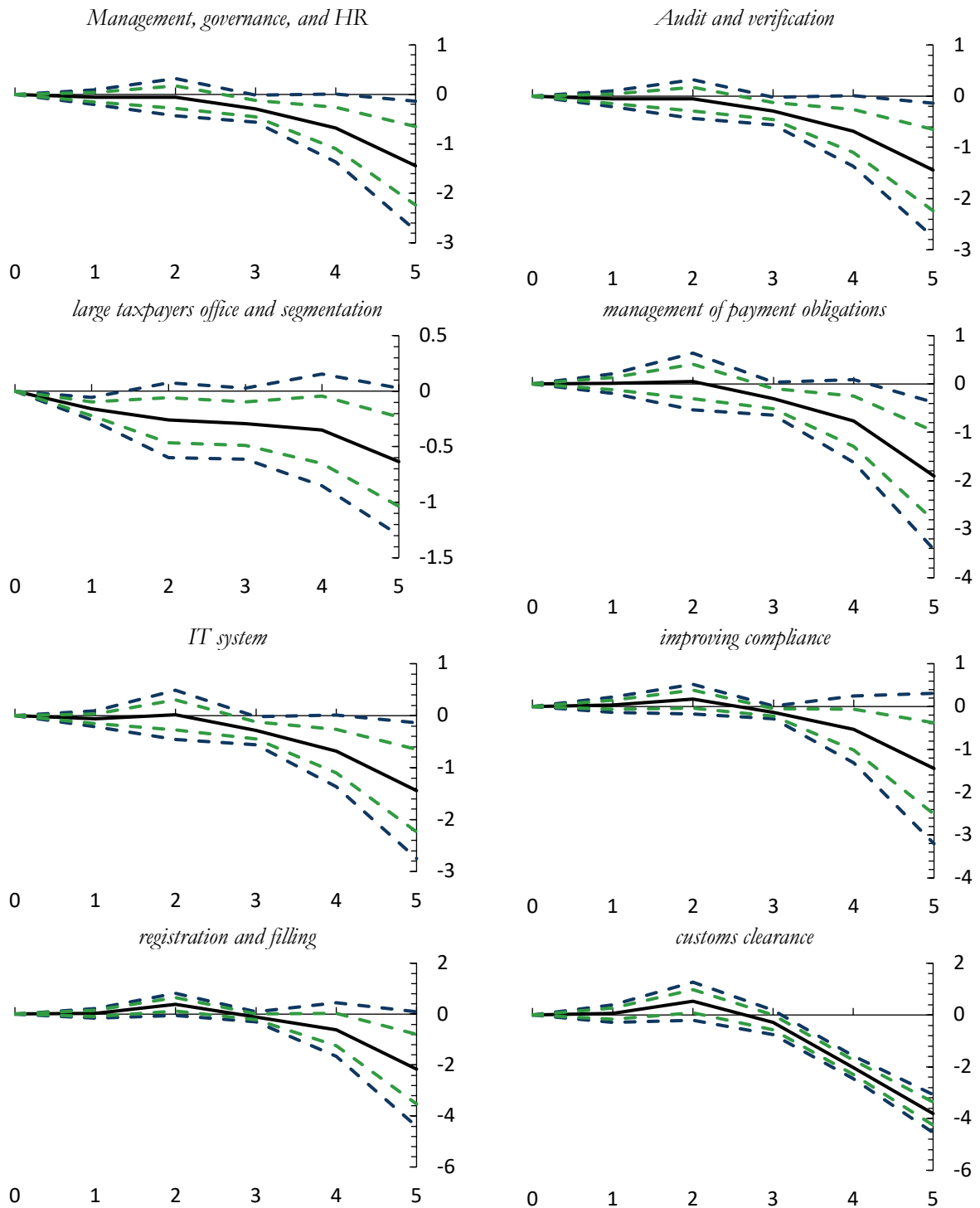
Middle East (# 4): Afghanistan, Algeria, Mauritania, Morocco

Eastern Europe (# 1): Bulgaria

**Table A1. Summary Statistics—Tax Revenues (% GDP), 2015**

Variable	Observations	Mean	Standard deviation	Minimum	Maximum
Tax revenue	45	18.12	6.38	6.50	32.24
PIT	25	3.33	2.00	0.21	7.19
CIT	26	2.67	1.33	0.0004	5.71
Property	23	0.58	0.72	0.0004	2.52
GST	31	6.25	2.60	1.35	11.04
VAT	28	6.21	2.63	0.03	11.04
Excises	28	2.41	1.37	0.18	5.35
Tax	32	2.87	3.02	0.02	11.97

**Figure A1. Impact of Revenue Administration Reforms on the Gini Index (Disposable Income) by type (percent)**



*Note:* x-axis in years; t=0 is the year of the tax reform shock. Solid black lines denote the response to a tax reform shock, blue dashed lines denote 90 percent confidence bands and green dashed lines denote 68 percent confidence bands, based on standard errors clustered at country level.

## Appendix 2. Sensitivity and Robustness Checks

### Excluding country fixed effects and controlling for year fixed effects and country-specific time trends

A possible bias from estimating equation (1) using country-fixed effects is that the error term may have a non-zero expected value, due to the interaction of fixed effects and country-specific developments (Tuelings and Zubanov, 2010). This would lead to a bias of the estimates that is a function of  $\lambda$ . To address this issue, equation (1) was re-estimated by excluding country fixed effects from the analysis. Results in Figure A2 (top panel) suggest that this bias is negligible.

The baseline specification does not include year fixed effects to allow for waves of tax reforms, that is, the possibility that different types of tax policy and revenue administration reforms may occur within the same year. Indeed, in these circumstances, including time fixed effects would “partial-out” these reforms and affect the overall estimated effects of tax reforms on income distribution. To check the robustness of our results, we re-estimate equation (1) including year fixed effects. The estimated effects of tax reforms on inequality without year fixed effects are presented in Figure A2 (middle panel) and do not change the main thrust of our results.

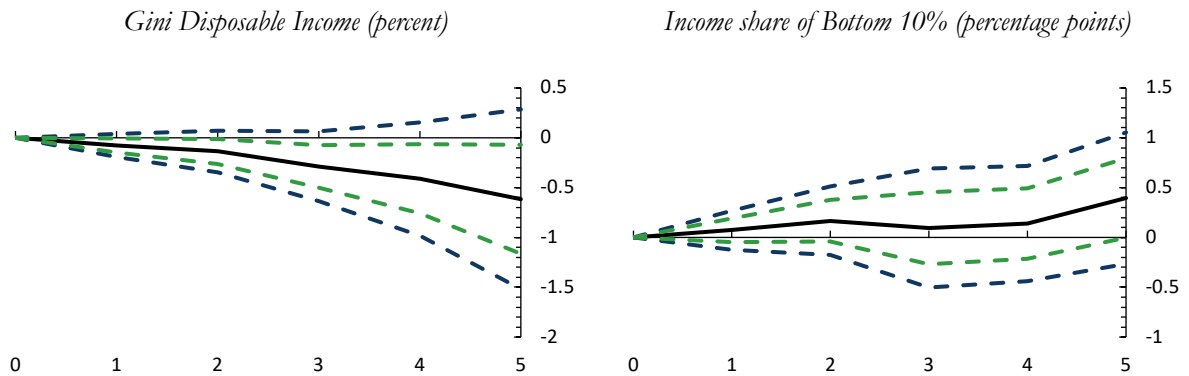
In addition, to try and estimate the causal impact of tax reforms on income distribution proxies, it is important to control for previous trends in dynamics of the Gini index or income shares that could lead to tax reforms. The baseline specification attempts to do this by controlling for up to two lags in the dependent variable.<sup>40</sup> To further mitigate this concern, we re-estimate equation (1) by including country-specific time trends as additional control variables. Results in Figure A2 (bottom panel).

---

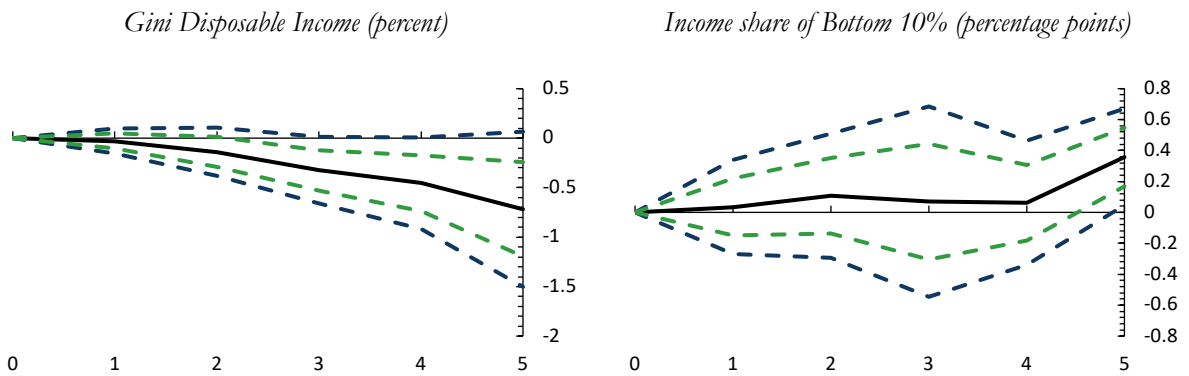
<sup>40</sup> Similar results are obtained when using alternative lag parametrizations. Results for zero, one and three lags (not shown) confirm that previous findings are not sensitive to the choice of the number of lags.

**Figure A2. Sensitivity: Impact of Tax Revenue Reforms**

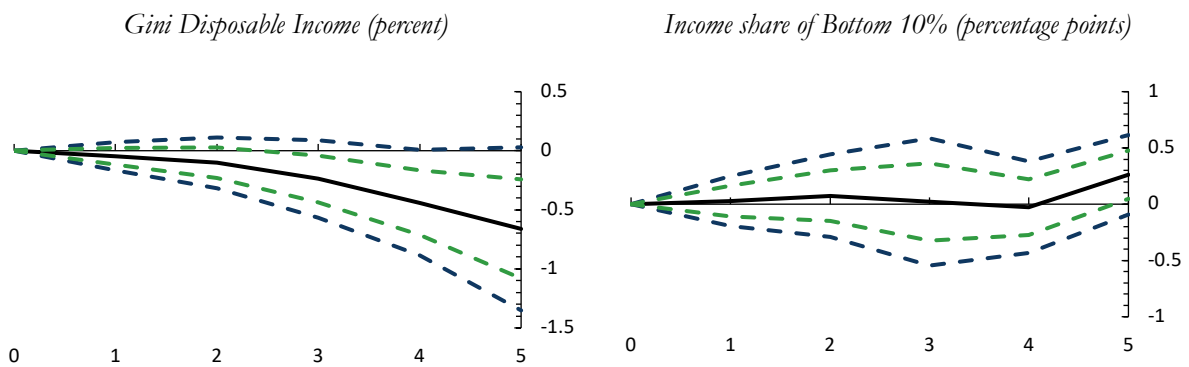
*No country effects*



*Time effects*



*Time trends*



*Note:* x-axis in years;  $t=0$  is the year of the tax reform shock. Solid black lines denote the response to a tax reform shock, blue dashed lines denote 90 percent confidence bands and green dashed lines denote 68 percent confidence bands, based on standard errors clustered at country level.

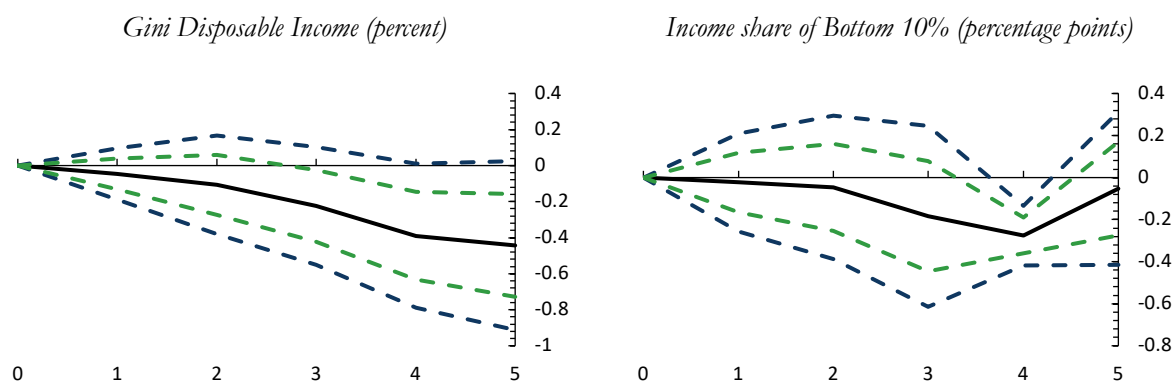


## Controlling for additional short-term drivers of inequality

Another possible concern regarding the analysis is that the results may suffer from omitted variable bias, as reforms may be carried out because of past economic conditions or past concerns on public finances' sustainability or at the same time as other macroeconomic policy actions that affect income distribution proxies. To address this issue, we expand the set of controls to include other variables that have been typically found to affect the evolution of inequality (see e.g. Jalles and Mello, 2019; Cevik and Correa-Caro, 2020). In particular, we include the following additional control variables: real GDP per capita; trade openness (given by the sum of exports and imports over GDP); government expenditure (% GDP); old age dependency ratio; share of value added in agriculture (% GDP). These controls are retrieved from the World Bank's World Development Indicators. The economic rationale behind their inclusion in the augmented vector  $X$  of equation (1) is as follows. The inclusion of real GDP per capita stems from the empirical debate around the notion of the Kuznets curve—the nonlinear (U-shaped) relationship between economic development and inequality. As for the role of globalization—here proxied by trade openness—there is no consensus in the empirical literature: some argue that it benefits the poor (see e.g. Dollar and Kraay, 2004), while others show that greater openness increases inequality especially in countries with higher income levels (see e.g. Milanovic, 2005). There is also a literature negatively relating the size of the public sector (and its redistributive power) and income inequality. In a recent work, Guzi and Kahanec (2018) found, using a new instrumental variable approach, that much of the literature underestimates the true role of the government (measured as government expenditure over GDP) in attenuating income inequality. Deaton and Paxson (1997) found that an increase in the share of the population older than 65 tended to worsen income inequality and for this reason the age-dependency ratio is included.

Figure A3 shows the results of the augmented regression. We observe that the effect on the Gini index based on disposable income is not statistically significantly different from the baseline result in Figure 6. As for the income share of the bottom 10 percent of the population, now the impulse response is negative but statistically not different from zero in contrast with the baseline result that found some positive impact 5 years after the tax reform.

**Figure A3. Additional Controls: Impact of Tax Revenue Reforms**

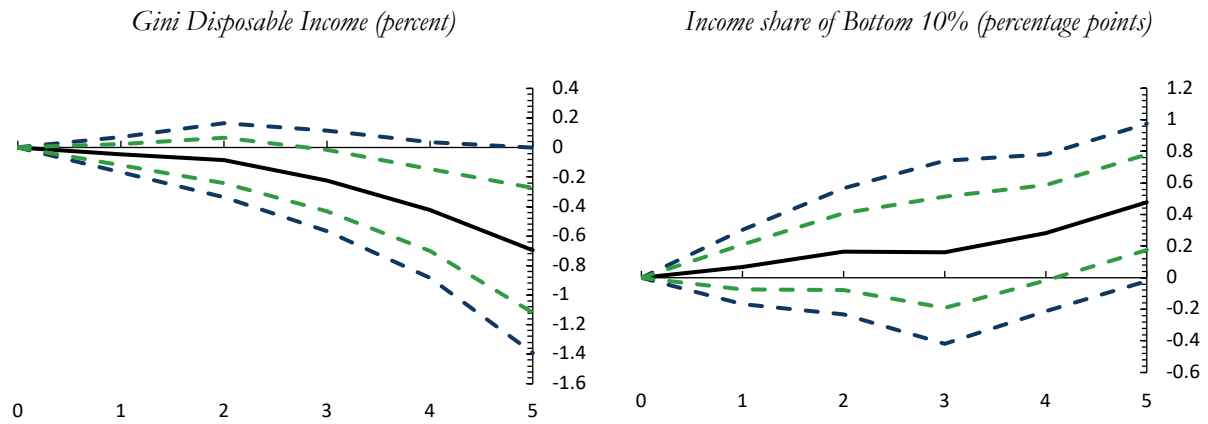


*Note:* x-axis in years;  $t=0$  is the year of the tax reform shock. Solid black lines denote the response to a tax reform shock, blue dashed lines denote 90 percent confidence bands and green dashed lines denote 68 percent confidence bands, based on standard errors clustered at country level.

## Controlling for Growth expectations

Yet another issue is the fact that tax reforms could be implemented because of concerns regarding future evolution of economic activity. To address this issue, we control for the expected values in  $t-1$  of future real GDP growth over periods  $t$  to  $t+k$ —that is, the time horizon over which the impulse response functions are computed. These are taken from the fall issue of the *IMF World Economic Outlook* for year  $t-1$ . Figure A4 shows the results from considering growth expectations in our baseline specification. We observe that these are in line with those presented in Figure 6.

**Figure A4. The role of expectations: Impact of Tax Revenue Reforms**



*Note:* x-axis in years;  $t=0$  is the year of the tax reform shock. Solid black lines denote the response to a tax reform shock, blue dashed lines denote 90 percent confidence bands and green dashed lines denote 68 percent confidence bands, based on standard errors clustered at country level.

## Dealing with endogeneity: Instrumental Variable Estimation

While the previous robustness checks go a long way toward mitigating endogeneity concerns, we still check the robustness of our results by using an Instrumental Variable (IV) approach. The literature has put forward several theories to rationalize why and when reforms (do not) happen. We focus on one broad factor examined in the literature: *political institutions* (see Duval, Furceri and Miethe, 2018). Specifically, we use the following set of political economy variables as external instruments which we divide in four categories: i) ideology of the governing party/ies, using a discrete variable to distinguish between left, center and right (3, 2 and 1, respectively);<sup>41</sup> ii) political system, using a discrete variable for parliamentary, assembly-elected and presidential forms of governments (2, 1 and 0, respectively);<sup>42</sup> iii) party fragmentation, using a continuous variable bounded between 0 (no fragmentation) and 1 (maximum fragmentation) to capture the number of political parties in the lower house of the legislative assembly;<sup>43</sup> iv) the strength of democratic institutions (measured as polity IV and normalized between 0 and 1).<sup>44</sup> Data on these variables are taken from the World Bank Database of Political Institutions.

As mentioned earlier, concerning the potential non-exogeneity of income we follow Cevik and Correa-Caro (2020) that instrument it using the growth rate of main trading partners retrieved from the IMF's WEO. By means of a two-stage least squares estimator, we re-estimate equation (1) using up to two lags of the four political economy instruments and/or growth rate of main trading partners as described above.<sup>45</sup> The results reported in Figure A5. The three different panels are variants of the set of instruments used in the TSLS regression. We observe that the negative (positive) impact of tax reforms on inequality (income share of the bottom 10 percent) is larger in magnitude and statistical significance relative to the baseline results in Figure 6 above. This seems to point to an under-estimation in absolute value of the previous set of coefficients, now corrected with an endogeneity-robust approach. Consequently, we are also re-estimating the previous results for the individual tax categories with a TSLS approach.

---

<sup>41</sup> Right-wing governments have been associated with more market-oriented reforms (Alesina and Roubini 1992).

<sup>42</sup> Persson (2002) argues that in countries with presidential forms of government, reform implementation faces less effective opposition than in countries with parliamentary systems.

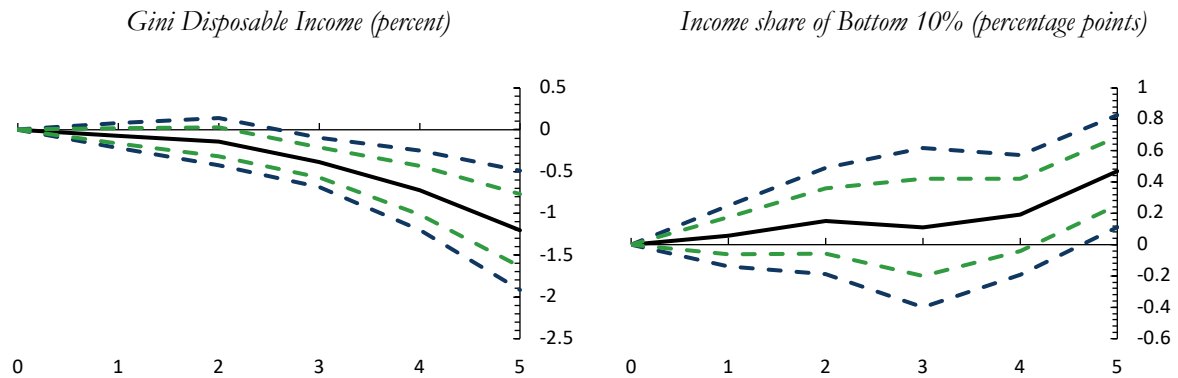
<sup>43</sup> In countries where with higher political fragmentation the government may find it more difficult to implement reforms (Haggard and Webb, 1994; Roubini and Sachs, 1989).

<sup>44</sup> While democracy can hinder reforms if special interests prevail on general welfare, democratic rulers are typically more sensitive to the interest of the public, and so more prone to implement reforms that benefit a large share of the population (Giuliano et al., 2013).

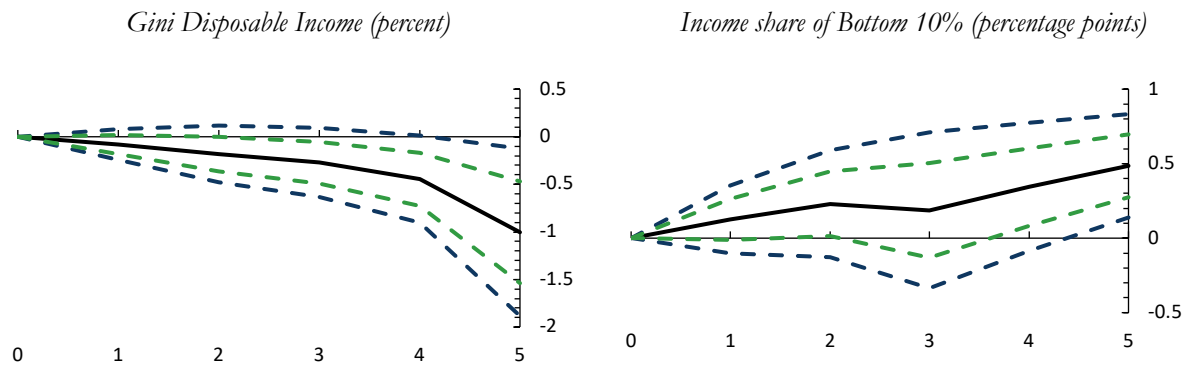
<sup>45</sup> To check the validity of our instruments and assess the strength of our identification, we rely on the Kleibergen-Paap (KP) and Hansen statistics. The KP statistics rejects the null that the different equations are unidentified (using Stock-Yogo critical values). The Hansen test statistics suggests that the set of instruments is valid—that is, uncorrelated with the error term.

**Figure A5. Endogeneity: Impact of Tax Revenue Reforms**

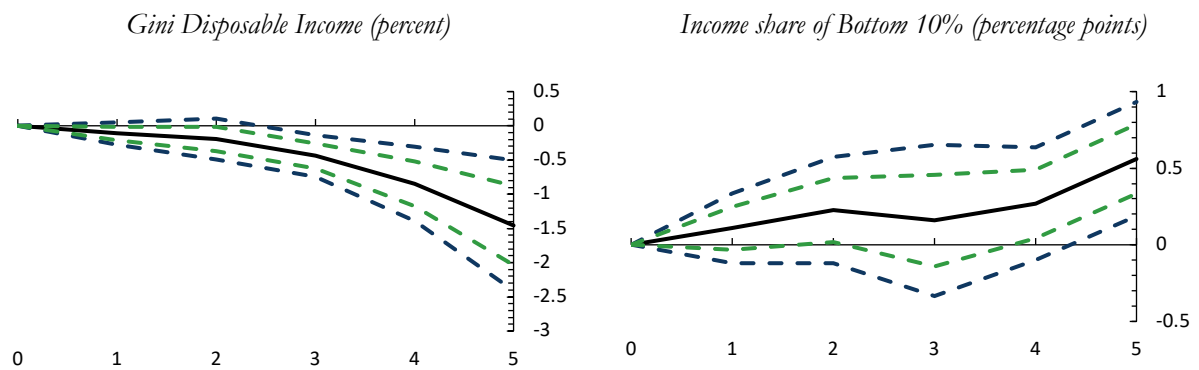
*Instrumenting tax reforms with political variables*



*Instrumenting real GDP growth with growth of main trading partners*



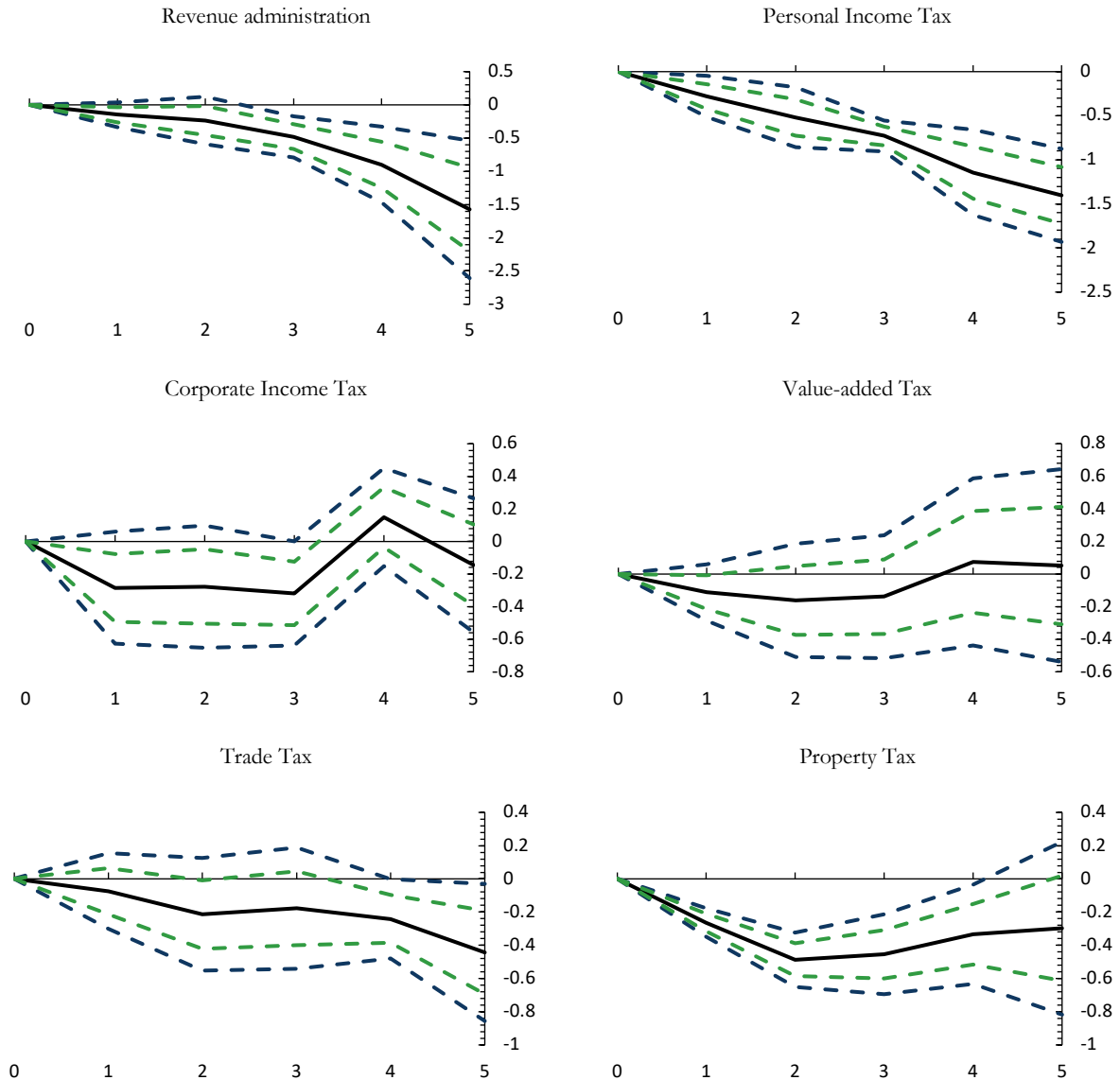
*Instrumenting both real GDP growth and tax reforms*



Note: x-axis in years; t=0 is the year of the tax reform shock. Solid black lines denote the response to a tax reform shock, blue dashed lines denote 90 percent confidence bands and green dashed lines denote 68 percent confidence bands, based on standard errors clustered at country level.

Redoing then the estimations by tax category separately, accounting for both potential endogeneity of a given reform and GDP growth, yields the results in Figure A6. We observe that the effects of revenue administration and PIT reforms on inequality are stronger (both in magnitude and statistical significance) than the baseline in Figure 7. In contrast, we now get statistical insignificance through the time horizon for both CIT and VAT. Trade reforms seem to now have a beneficial impact on income distribution from year 4 onwards—a result which was previously absent before. Finally, in the case of property taxes the impulse response remains almost unchanged.

**Figure A6. Endogeneity: Impact on Gini Disposable Income from Specific Tax Revenue Reforms (percent)**



*Note:* x-axis in years; t=0 is the year of the tax reform shock. Solid black lines denote the response to a tax reform shock, blue dashed lines denote 90 percent confidence bands and green dashed lines denote 68 percent confidence bands, based on standard errors clustered at country level.