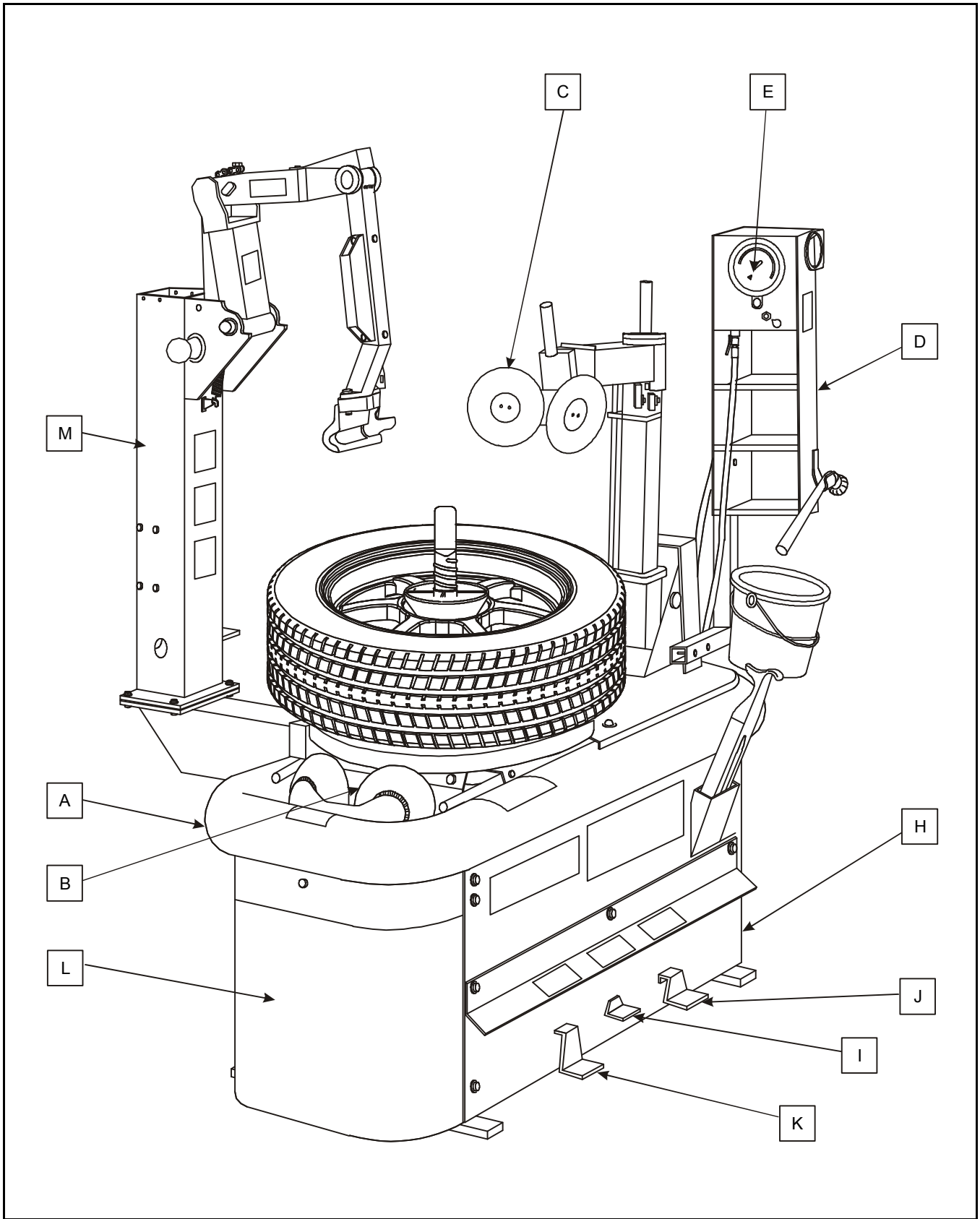


TC2000



TC2000

REFER TO NEXT SHEET FOR PARTS DESCRIPTION LISTING

TC2000

Index #	Description
A	MACHINE FRAME (Sheet 3)
B	LOWER ARM ASSEMBLY (Sheet 4)
C	UPPER ARM ASSEMBLY WITH ROLLERS (Sheet 4)
D	GAUGE BRACKET (Sheet 5)
E	GAUGE ASSEMBLY (Sheet 6)
F	CYLINDER D. 125 (Sheet 6) (Not Illustrated)
G	TC2000 MOTOR (Sheet 7) (Not Illustrated)

Index #	Description
H	HALF COVER PEDAL UNIT (Sheet 8)
I	MOTOR PEDAL UNIT (Sheet 9)
J	BEAD LOOSENING PEDAL UNIT (Sheet 10)
K	INFLATION PEDAL UNIT (Sheet 11)
L	RIGHT FOOT ASSEMBLY (Sheet 12)
M	COLUMN KIT (Sheet 13) (Optional)
N	DECAL PLACEMENT SHEET (Sheet 14) (Not Illustrated)

**STANDARD EQUIPMENT
(Not Illustrated)**

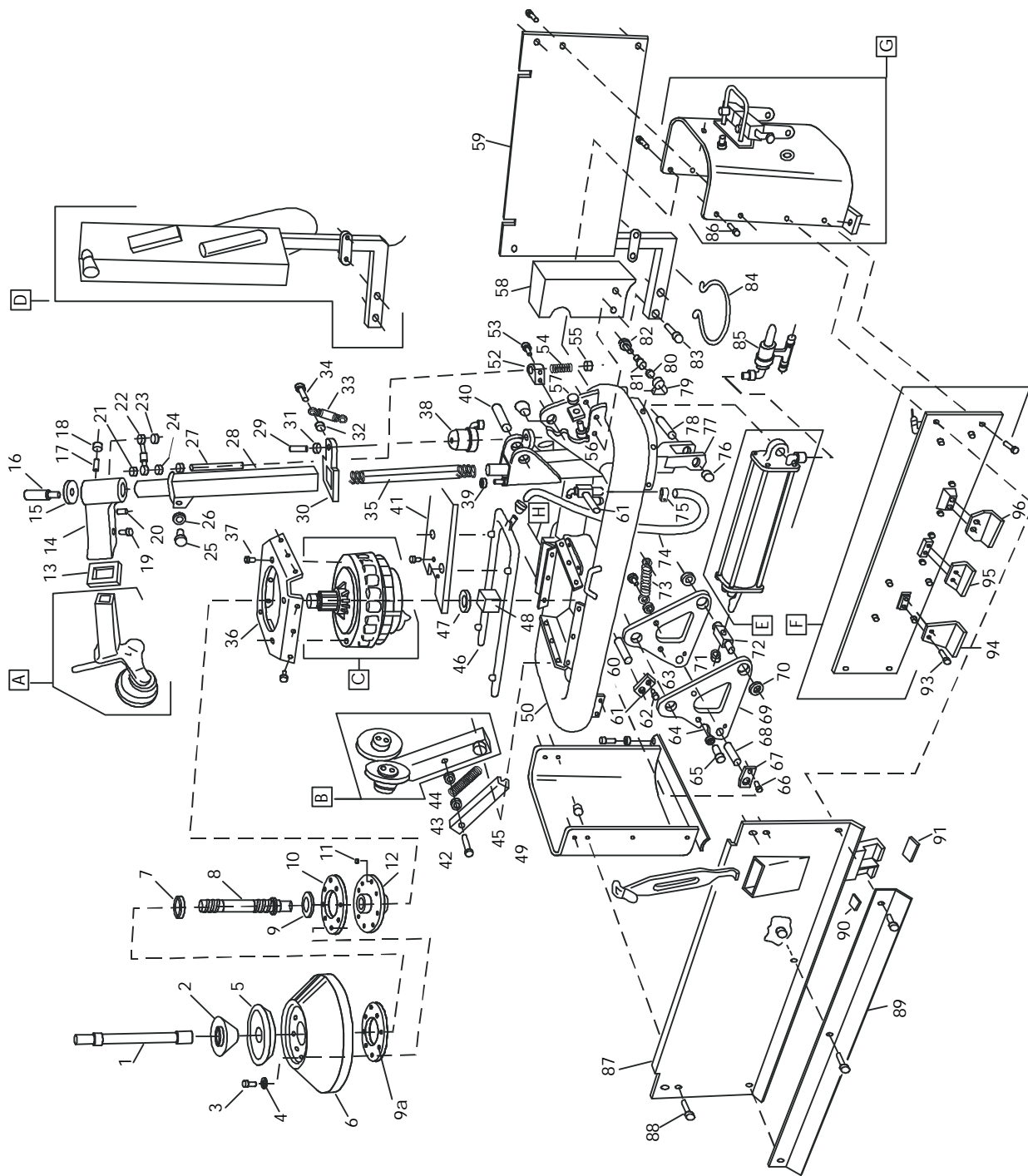
Part #	Description
RP6-1828	Steel Wheel Mounting Tool
RP6-2058	Mounting Paste
RP6-1506	Applicator Brush

Part #	Description
179-15-2	Safety Goggles
148-133-2	Lubrication Oil
RP6-1156	Cone cover

**INSTALLATION KIT
(Not Illustrated)**

Part #	Description
RP6-0249	Washer
RP6-0259	Nut, M10
RP6-0267	Lock nut, M8
RP6-0317	Bolt M8 x 16
RP6-1156	Cone cover
RP6-1420	Pedal bracket bolt M6 x 16
RP6-1506	Mounting paste brush
RP6-1934	Bolt, M10 x 40
RP6-3223	Handle, vertical
RP6-2210	Threaded Anchor, M8 x 90

Part #	Description
RP6-2509	Paste bucket bracket
RP6-3320	Pedal, motor rotation
RP6-3321	Pedal, inflation
RP6-3322	Pedal, bead loosening
RP6-3193	¼ inch NPTF to ¼ inch BSPP Connector
RP6-1883	High flow disconnect coupler
RP6-3428	Hose assembly
RP6-3671	3/8 inch BSPP to ¼ inch BSPP connector
RP6-3745	Brush clip kit
RP6-3776	Magnetic puck- ALU wheels



MACHINE FRAME

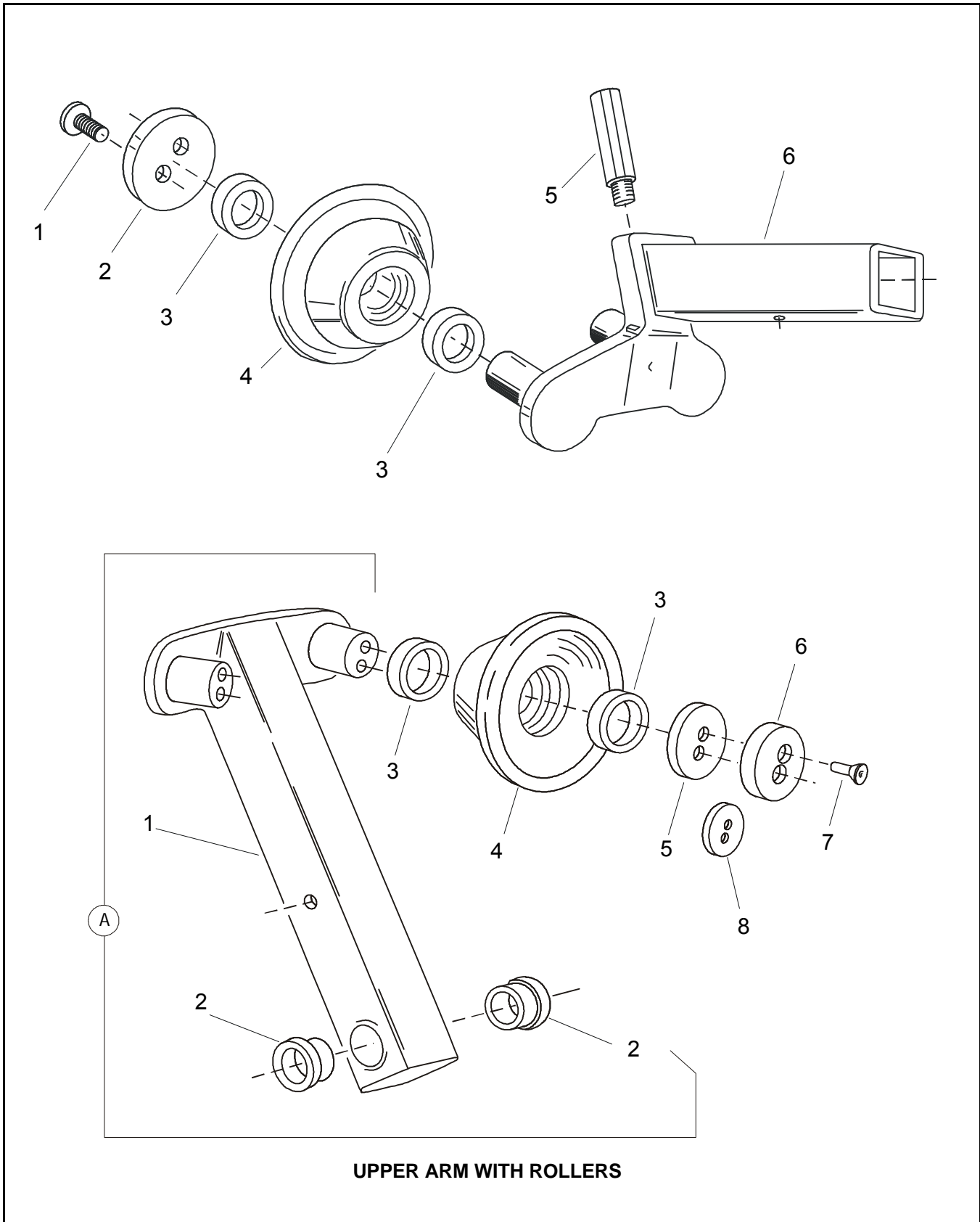
TC2000

REFER TO NEXT SHEET FOR PARTS DESCRIPTION LISTING

Machine Frame

Index #	Part #	Description
A	RP6-3345	Upper arm assembly Complete (Sheet 4)
B	RP6-3226	Lower arm assembly Complete (Sheet 4)
C	RP6-3390	Motor TC2000
D	RP6-3380	Gauge bracket
E	RP6-3231	Cylinder D. 125
F	RP6-3309	Half cover pedal unit
G	RP6-3353	Right foot assembly
1	RP6-3300	Fixed shaft
2	RP6-3201	Cone
3	RP6-3780	Bolt VTCEI M12 x 50
4	RP6-3382	Elastical washer A12
5	RP6-3256	Rubber wheel support
6	RP6-3093	Lower clamping bell
7	RP6-3258	Threaded nut
8	RP6-3257	Threaded rod
9	RP6-3259	Washer D.100
9a	RP6-3779	Spacer
10	RP6-3202	Conductor flange
11	RP6-3391	Steel ball D.10 AA
12	RP6-3203	Traction flange
13	RP6-3218	Locking device mobile arm
14	RP6-3315	Horizontal arm
15	RP6-3222	Washer for arm
16	RP6-3223	Handle vertical arm
17	RP6-3392	Spring plunger M12
18	RP6-3393	Low nut M12
19	RP6-0287	Bolt VTCEI M8 x 10
20	RP6-0284	Elastic dowel pin 6 x 20
21	RP6-0246	Self locking nut M10
22	RP6-3383	Chain for arm
23	RP6-0292	Self locking nut M6
24	RP6-0259	High nut M10
25	RP6-3164	Bolt VTE M12 x 35
26	RP6-1751	High nut M12
27	RP6-3224	Tie rod for arm
28	RP6-3307	Rod
29	RP6-1189	Bolt VSTEI P.P. M10 x 30
30	RP6-3299	Locking device upper arm
31	RP6-0259	High nut M10
32	RP6-0270	High nut M6
33	RP6-3367	Spring T 12 x 2 x 69
34	RP6-206019	Bolt VTCEI M6 x 16
35	RP6-3366	Spring 44 x 4 x 1350
36	RP6-3305	Cover
37	RP6-0347	Bolt VTE M8 x 35
38	RP6-3373	Cylinder locking device
39	RP6-0276	Self locking nut M12
40	RP6-3217	Shaft for arm
41	RP6-3191	Upper cover
42	RP6-0471	Bolt VTCEI M8 x 60
43	RP6-0257	High nut M8

Index #	Part #	Description
44	RP6-3371	Spring T 4 x 28 x 150
	or 98-357-2	Upgrade spring
45	RP6-3360	Cover for spring
46	RP6-3332	Inflation ring
47	RP6-3354	Circlip D.25
48	RP6-3336	Hub for fixed shaft
49	RP6-3352	Left foot
50	RP6-3361	Frame with bushings
51	RP6-3377	VSC valve
52	RP6-3363	Lateral plate
53	RP6-1672	Bolt VTCEI M6 x 10
54	RP6-3372	Spring 1.5 x 15 x 100
55	RP6-0246	Self locking nut M10
56	RP6-3374	Rubber shock absorber
58	RP6-3249	Cylinder cover
59	RP6-3229	Cover
60	RP6-3236	Shaft for lever D. 30
61	RP6-3235	Shaft plate D. 30
62	RP6-0287	Bolt VTCEI M8 x 10
63	RP6-3358	Right side lever
65	RP6-0451	Bolt VTCEI M8 x 35
66	RP6-1672	Bolt VTCEI M6 x 10
67	RP6-3040	Shaft plate D.25
68	RP6-3369	Shaft for lever D.25
69	RP6-3359	Left lever
70	RP6-0255	Circlip D. 25
71	RP6-3240	Self locking nut with washer M16
72	RP6-3287	Hub
73	RP6-3368	Spring T 3 x 21 x 200
74	RP6-0474	PVC hose 19 x 26
75	RP6-0475	Spanner D. 23-35
77	RP6-3290	Arm hose
78	RP6-3370	Shaft for cylinder
79	RP6-3662	Assembly (Consisting Of:)
79A	RP6-1134	Connector 1/4" - 1/4"
80	RP6-0499	Gasket OR 107
81	RP6-0558	Pressure release button
82	RP6-0559	Tap release button
83	RP6-1220	Bolt VTE M8x50
84	RP6-2509	Grease bucket support
85	RP6-3375	Quick release
86	RP6-0256	Bolt VTCEI M8 x 16
87	RP6-3334	Half cover with hoses
88	RP6-3388	Bolt VTE M8 x 16 with flange
89	RP6-3206	Pedal cover
90	RP6-3364	Rubber stud for lever
91	RP6-3394	Rubber stud USA lever
93	RP6-1420	Bolt VTBBEI M6 x 16
95	RP6-3320	Motor/Inflation pedal
96	RP6-3322	Bead loosening pedal



TC2000

REFER TO NEXT SHEET FOR PARTS DESCRIPTION LISTING

*RP6-3345 Upper arm with rollers
 (Complete)*

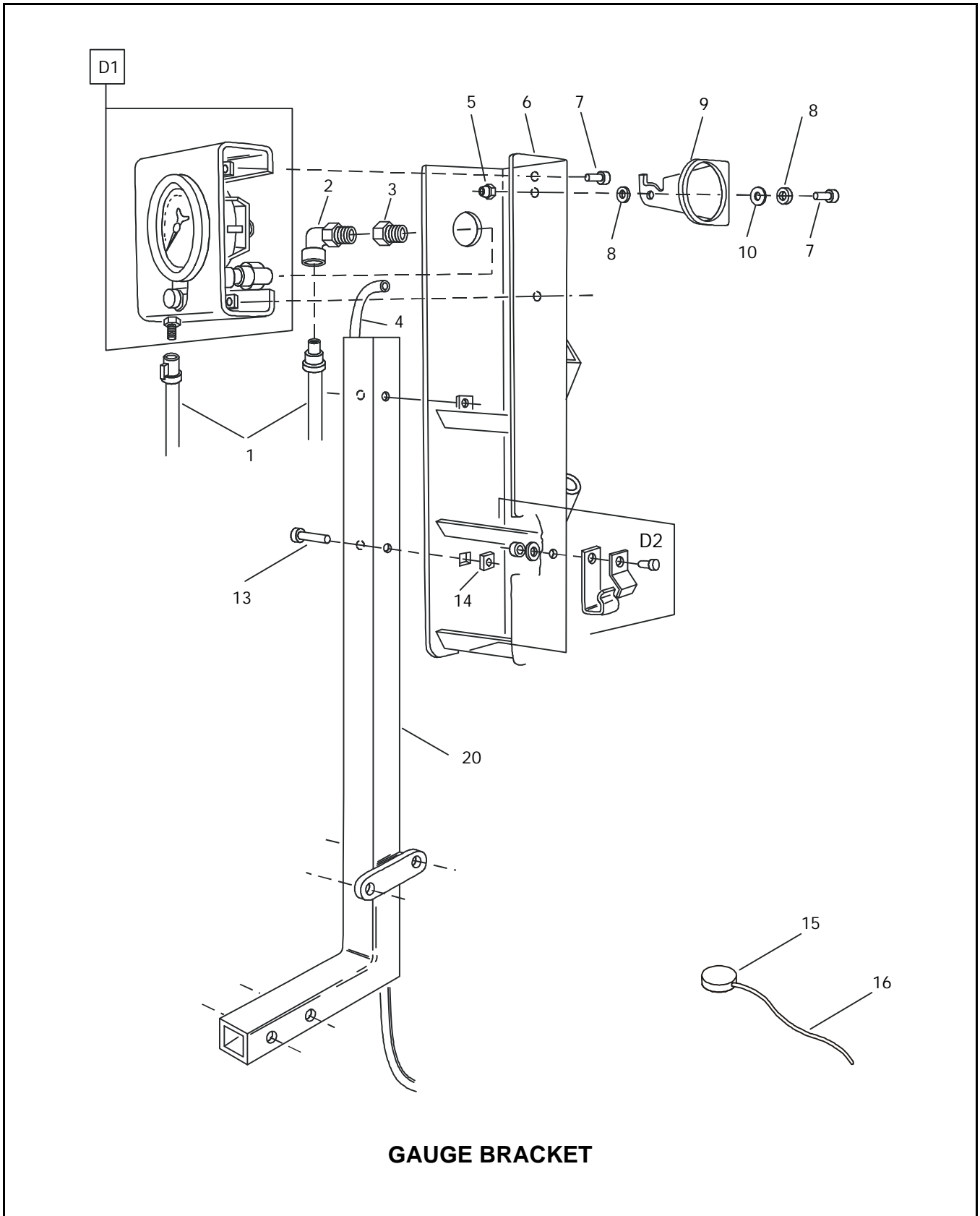
<i>Index #</i>	<i>Part #</i>	<i>Description</i>
1	RP6-0782	<i>Bolt VTSPEI M6 x 16</i>
2	RP6-1340	<i>Washer for roller</i>
3	RP6-1386	<i>Gasket V Ring 38.5</i>

<i>Index #</i>	<i>Part #</i>	<i>Description</i>
4	RP6-3340	<i>Bead roller</i>
5	RP6-3223	<i>Handle upper arm</i>
6	RP6-3319	<i>Upper arm</i>

*RP6-3226 Lower Arm
 (Complete)*

<i>Index #</i>	<i>Part #</i>	<i>Description</i>
A	RP6-4236	<i>Lower Arm and Bushings</i>
1	RP6-3227	<i>Lower arm</i>
2	RP6-3208	<i>Bushing 25/30/40/16</i>
3	RP6-1386	<i>Gasket V Ring 38.5</i>
4	RP6-3340	<i>Bead roller</i>

<i>Index #</i>	<i>Part #</i>	<i>Description</i>
5	RP6-1340	<i>Washer for roller</i>
6	*RP6-3776	<i>Magnetic puck-ALU wheels</i>
7	RP6-0782	<i>Bolt VTSPEI M6 x 16</i>
8	*RP6-3774	<i>Small washer *(Inner lower roller only)</i>



GAUGE BRACKET

TC2000

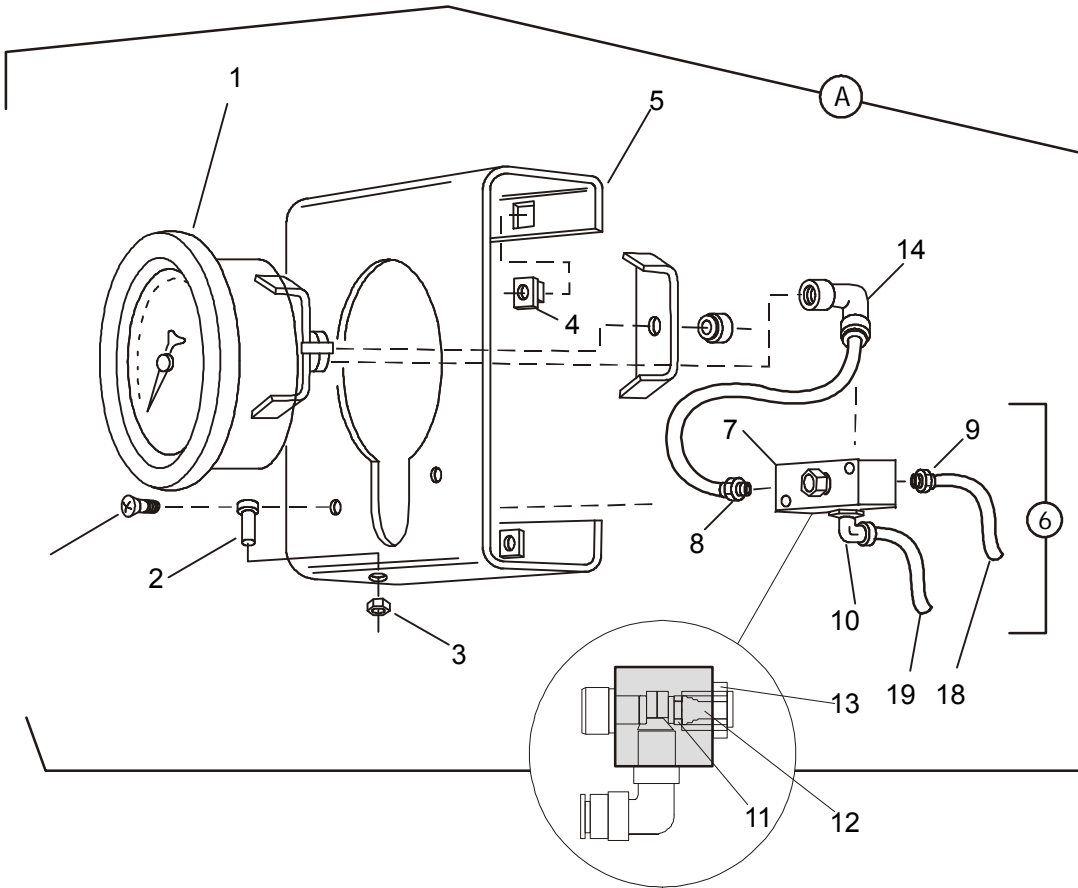
REFER TO NEXT SHEET FOR PARTS DESCRIPTION LISTING

Gauge bracket

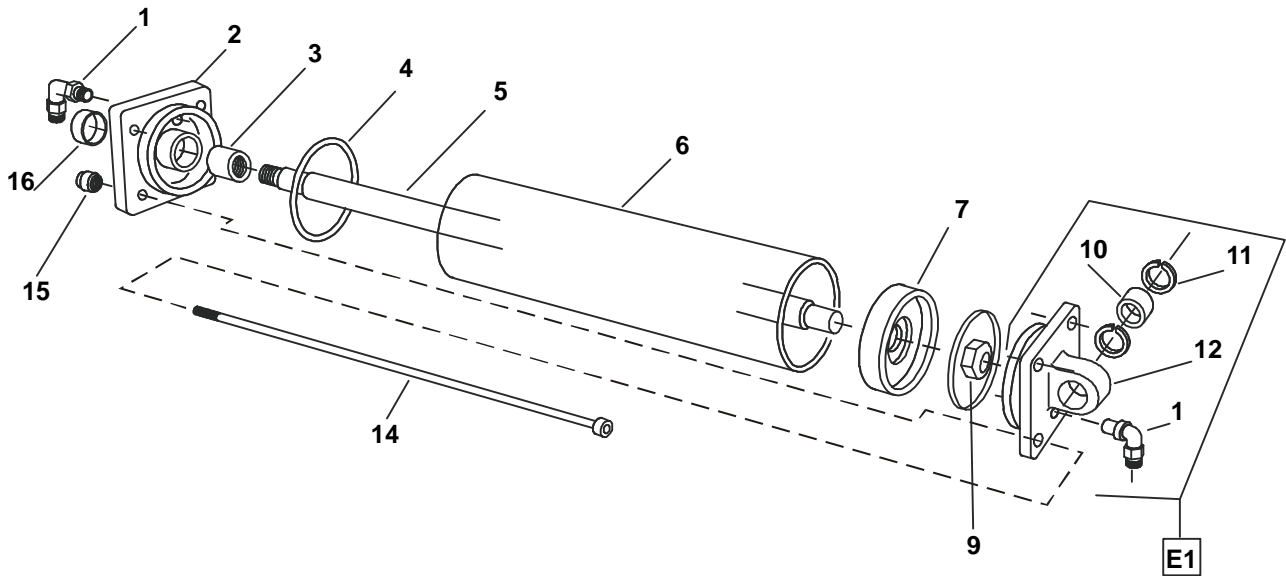
<i>Index #</i>	<i>Part #</i>	<i>Description</i>
1	RP6-1600	Inflating hose
2	RP6-1134	Connector (2020) ¼" - ¼"
3	RP6-3436	Connector S2520 ¼" - ¼"
4	RP6-1969	Red hose 8 x 6 L=950
5	RP6-0292	Self locking nut M6
6	RP6-3401	Tool Tray
7	RP6-0280	Bolt VTCEI M6 x 20
8	RP6-1943	Washer 6.4 x 18
9	RP6-3418	Can holder
10	RP6-1584	Cup spring 6.2 x 12 x 0.5

<i>Index #</i>	<i>Part #</i>	<i>Description</i>
13	RP6-1392	Bolt VTE M6 x 50
14	RP6-0012	Locked nut M6
15	RP6-3776	Puck
16	RP6-1631	Cable puck retainer
20	RP6-3417	Tool tray post
*D1	RP6-3434	Gauge assembly
D2	RP6-3745	Brush clip kit

**This part is not available as a warranty item after 90 days past install date.
 For warranty claims after 90 days, individual components must be ordered.*



GAUGE ASSEMBLY



CYLINDER

TC2000

REFER TO NEXT SHEET FOR PARTS DESCRIPTION LISTING

Gauge Assembly

<i>Index #</i>	<i>Part #</i>	<i>Description</i>
*A	RP6-3434	Gauge Assembly
1	RP6-1128	Gauge D. 100
2	RP6-0248	Screw VTE M8 x 20
3	RP6-0257	High nut M8
4	RP6-0012	Locked nut M6
5	RP6-3410	Gauge casing
6	RP6-3433	Distributor Assembly (Consisting Of:)
7	RP6-2010	4-Way distributor
8	RP6-2004	Connector 4-1/4"
9	RP6-3155	Nipple 1/8"-1/4"

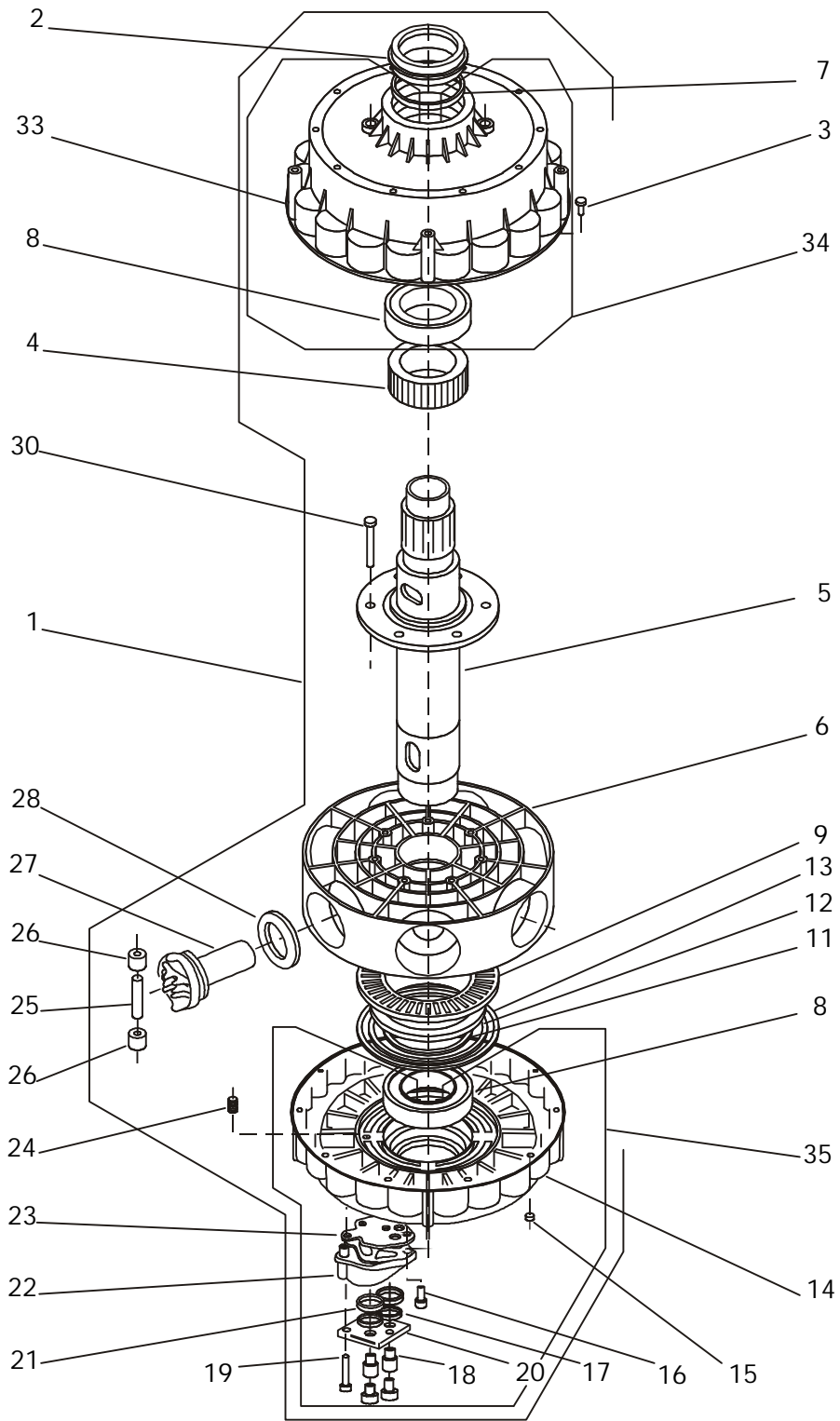
<i>Index #</i>	<i>Part #</i>	<i>Description</i>
10	RP6-1708	Connector 8-1/4" 90°
11	RP6-0499	Gasket O-ring 107
12	RP6-0558	Button for air release
13	RP6-0559	Tap for air release
14	RP6-2009	Connector (2013) 1/4"
15	RP6-2004	Nipple 4-1/4" MM
16	RP6-1562	Rilsan air line 4 x 2.7 L=150
17	RP6-0996	Screw Vte M4 x 8
18	RP6-1600	Inflation hose L=1500
19	RP6-1969	Red Hose 8 X 6 L=950

CYLINDER D. 125

<i>Index #</i>	<i>Part #</i>	<i>Description</i>
1	RP6-1708	Connector 8-1/4 inch 90°
2	RP6-3205	Front cylinder flange
3	RP6-2720	Guiding ring 30-35-9.7
4	RP6-3255	Gasket OR 3475
5	RP6-3230	Cylinder shaft D. 125
6	RP6-3228	Cylinder housing D. 125
7	RP6-3254	Piston TDUOP 125-51
9	RP6-3240	Self locking nut & washer M16

<i>Index #</i>	<i>Part #</i>	<i>Description</i>
10	RP6-3233	Ball joint GE 25
11	RP6-3234	Circlip D.42
12	RP6-3204	Rear flange
14	RP6-3252	Rod for cylinder
15	RP6-0246	Self locking nut M10
16	RP6-3242	Gasket NSW 30-40-6
E1	RP6-3232	Rear flange
W	RP6-3745	

*This part is not available as a warranty item after 90 days past install date.
 For warranty claims after 90 days, individual components must be ordered.



TC2000 MOTOR

TC2000

REFER TO NEXT SHEET FOR PARTS DESCRIPTION LISTING

TC2000 MOTOR

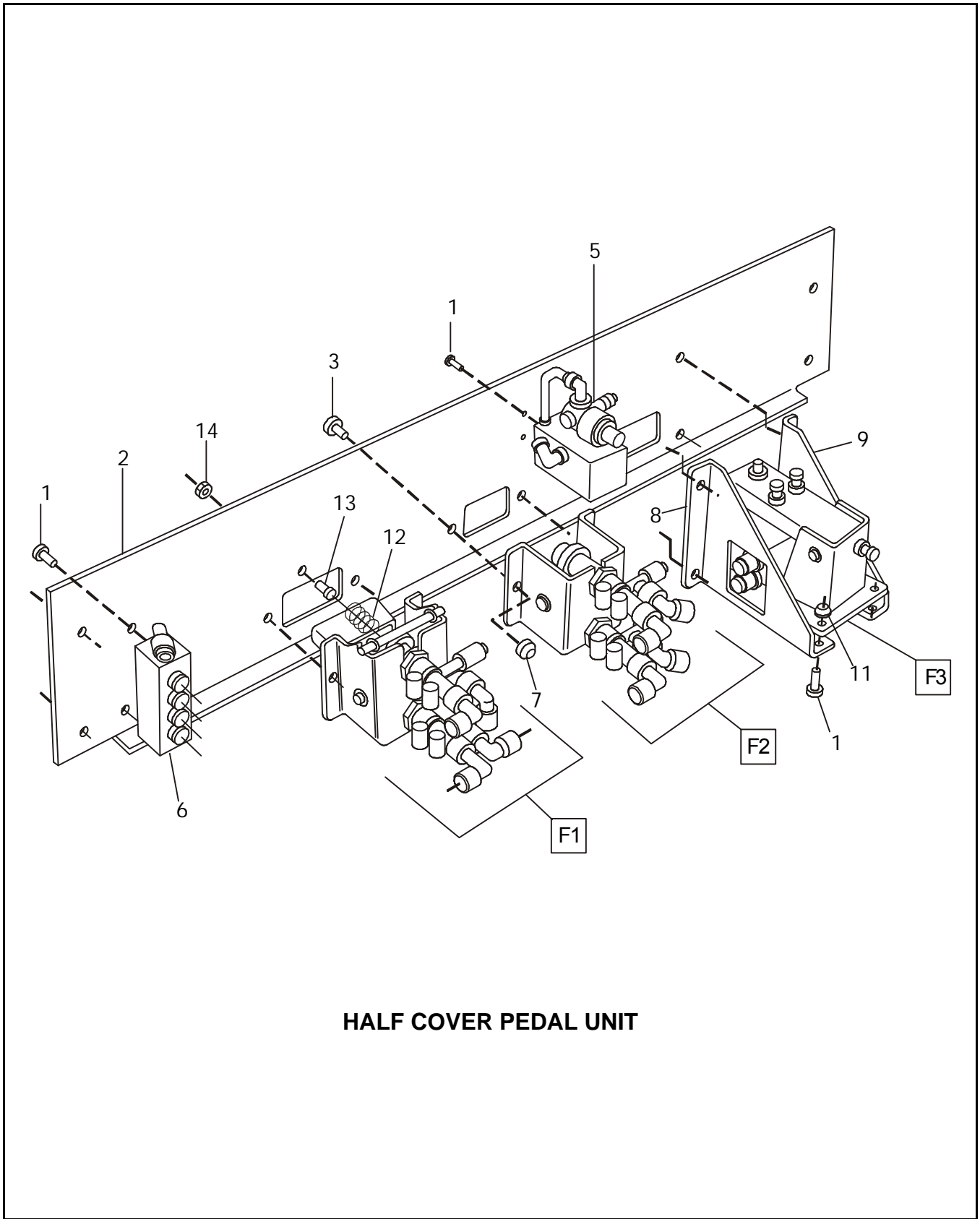
<i>Index #</i>	Part #	Description
1	RP6-3390	<i>TC2000 Motor</i>
2	RP6-1986	<i>Gasket</i>
3	RP6-0280	<i>Bolt VTCEI M6x20</i>
4	RP6-0286	<i>Filter</i>
5	RP6-3200	<i>Motor shaft</i>
6	RP6-0311	<i>Rotor</i>
7	RP6-1987	<i>Gasket OR 145</i>
8	RP6-0198	<i>Bearing</i>
9	RP6-0612	<i>Distributor</i>
11	RP6-0605	<i>O-Ring 245</i>
12	RP6-0607	<i>O-Ring 250</i>
13	RP6-0608	<i>O-Ring 256</i>
14	RP6-2104	<i>Lower housing</i>
15	RP6-1225	<i>Nut M6</i>
16	RP6-0280	<i>Bolt VTCEI M6x20</i>
17	RP6-0819	<i>O-Ring 2100</i>

<i>Index #</i>	Part #	Description
18	RP6-0201	<i>Connector 8 - 1/4"</i>
19	RP6-0764	<i>Bolt VTCEI M6x45</i>
20	RP6-0717	<i>Cover VSC</i>
21	RP6-0718	<i>Membrane VSC</i>
22	RP6-0716	<i>VSC housing</i>
23	RP6-0836	<i>Gasket for VSC</i>
24	RP6-0042	<i>Spring HL 10x25</i>
25	RP6-0219	<i>Dowel pin 10x60</i>
26	RP6-0045	<i>Roller</i>
27	RP6-0619	<i>Piston</i>
28	RP6-0609	<i>Gasket DE300</i>
30	RP6-0340	<i>Bolt VTE M8x35</i>
33	RP6-0614	<i>Upper housing</i>
34	RP6-0621	<i>Upper housing assembly</i>
35	RP6-2105	<i>Lower housing assembly</i>

Tools for Air Motor Removal

Part #	Description
RP6-3468	<i>Key for flange conductor</i>

Part #	Description
RP6-3446	<i>Key for large nut</i>



HALF COVER PEDAL UNIT

TC2000

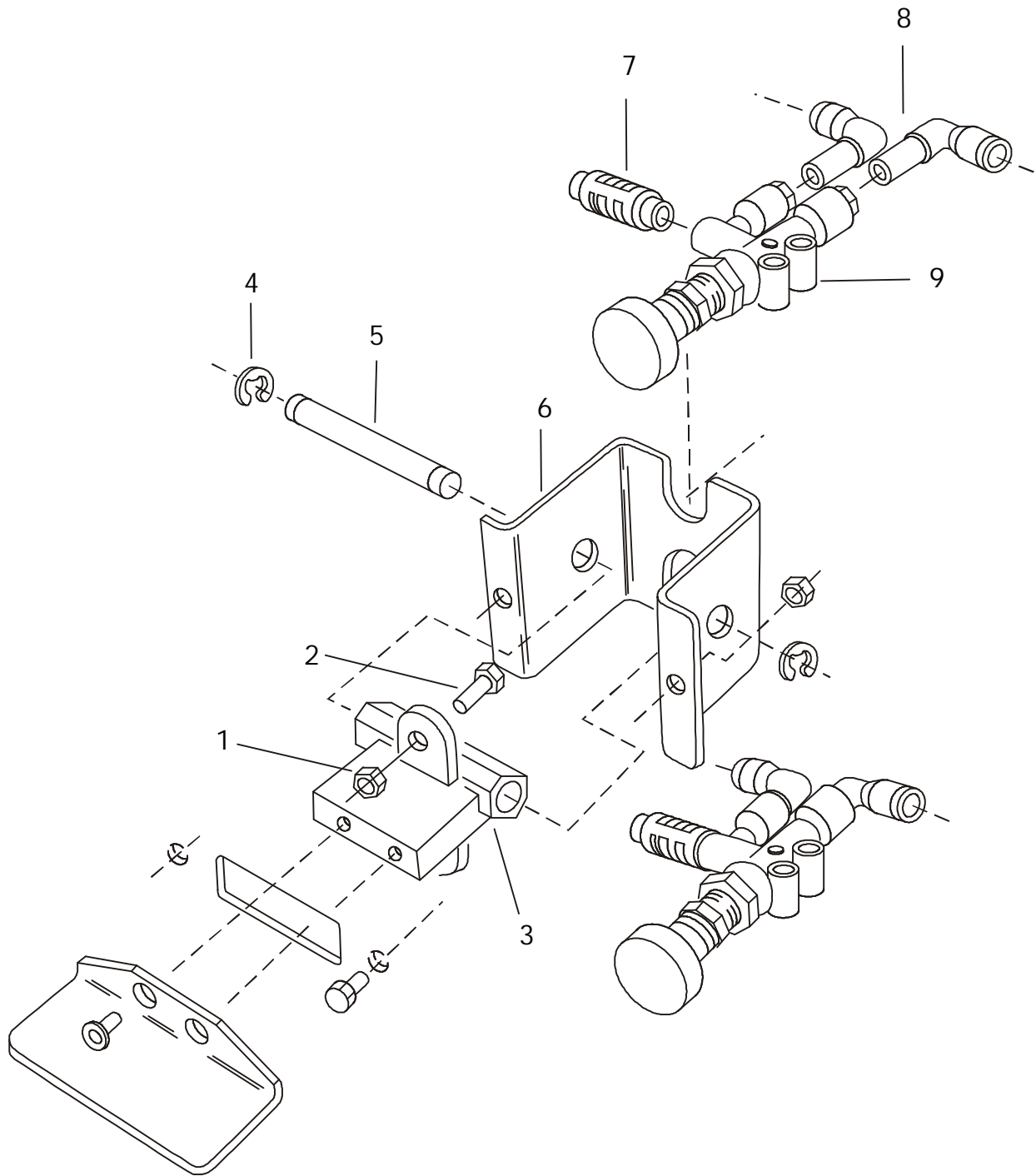
REFER TO NEXT SHEET FOR PARTS DESCRIPTION LISTING

HALF COVER PEDAL UNIT

<i>Index #</i>	<i>Part #</i>	<i>Description</i>
1	RP6-206019	<i>BoltVTCEI M6X16</i>
2	RP6-3301	<i>Half cover for pedal unit</i>
3	RP6-1556	<i>Bolt VTE M8x16</i>
5	RP6-3426	<i>Valve 60 PSI with connector</i>
6	RP6-2850	<i>block 5 way</i>
7	RP6-0267	<i>Self locking nut M8</i>
8	RP6-3302	<i>Bracket right pedal</i>
9	RP6-3303	<i>Bracket left pedal</i>

<i>Index #</i>	<i>Part #</i>	<i>Description</i>
11	RP6-0292	<i>Self locking nut M6</i>
12	RP6-3634	<i>Spring C 2.5 X 3.5 x 35</i>
13	RP6-3635	<i>Bolt VTCEI M6 x 6</i>
14	RP6-0281	<i>Nut M6</i>
*F1	RP6-3210	<i>Bead loosener pedal unit</i>
*F2	RP6-3209	<i>Motor pedal unit</i>
*F3	RP6-3304	<i>Inflation pedal unit</i>

**This part is not available as a warranty item after 90 days past install date.
 For warranty claims after 90 days, individual components must be ordered.*



MOTOR PEDAL UNIT

TC2000

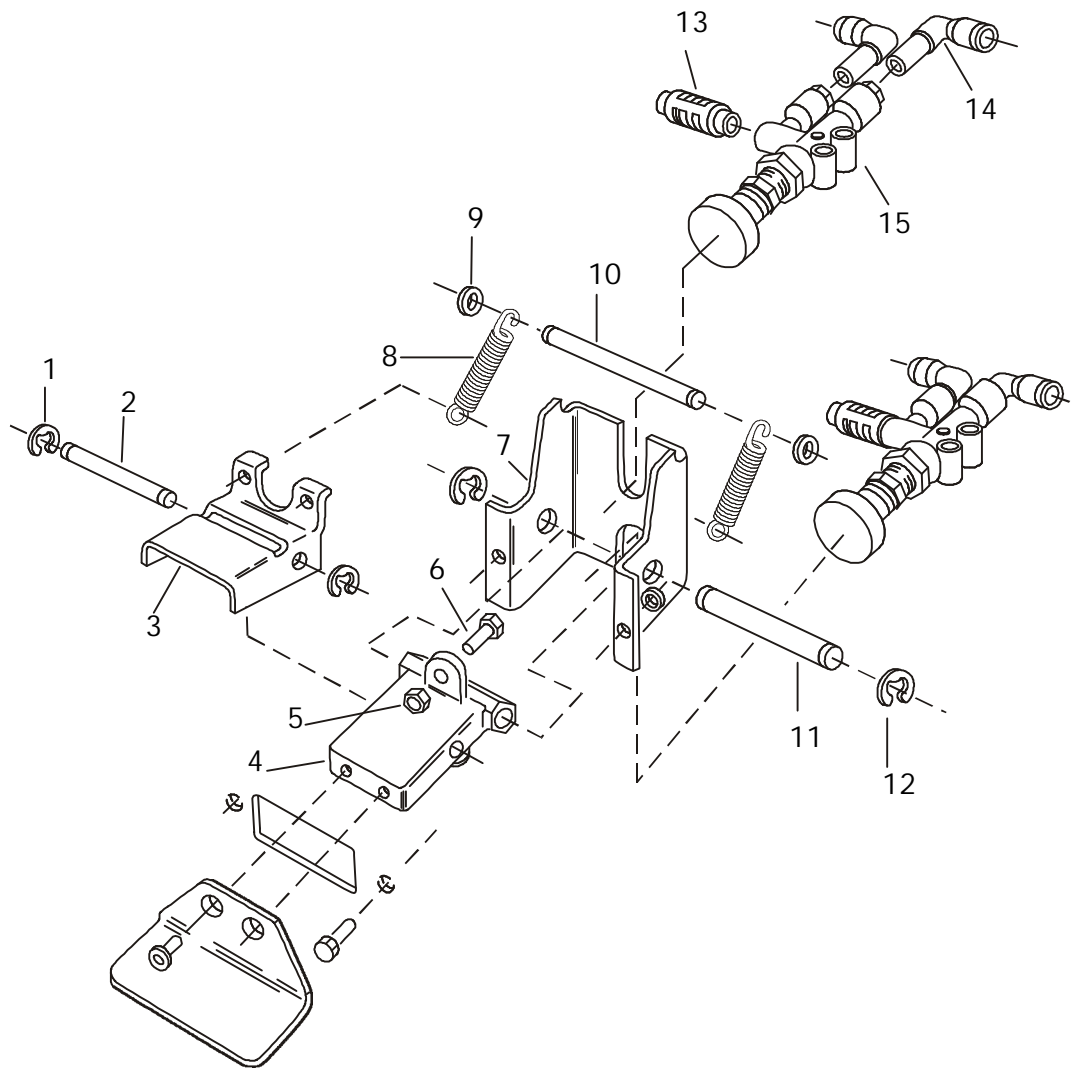
REFER TO NEXT SHEET FOR PARTS DESCRIPTION LISTING

MOTOR PEDAL UNIT

<i>Index #</i>	Part #	Description
1	RP6-0281	Low nut M6
2	RP6-0269	Bolt VTE M6x20
3	RP6-3263	Motor pedal
4	RP6-3271	Elastic ring D.9
5	RP6-3270	Shaft for pedal

<i>Index #</i>	Part #	Description
6	RP6-3260	Pedal support
7	RP6-0403	Muffler 1 SPL F-1/8"
8	RP6-3244	90° connector 3182
9	RP6-2989	Valve 3-2 plate D.30

**This part is not available as a warranty item after 90 days past install date.
For warranty claims after 90 days, individual components must be ordered.*



BEAD LOOSENING PEDAL UNIT

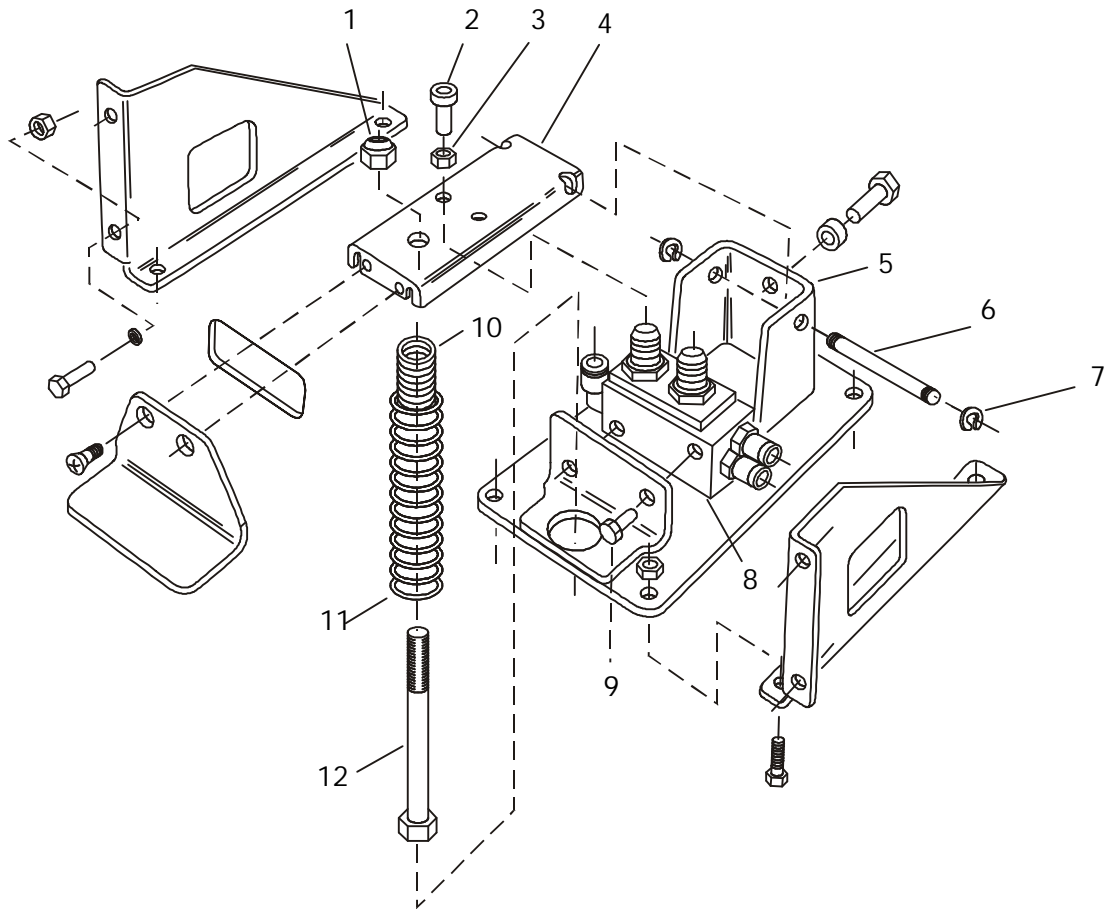
TC2000

REFER TO NEXT SHEET FOR PARTS DESCRIPTION LISTING

BEAD LOOSENING PEDAL UNIT

<i>Index #</i>	Part #	Description
1	RP6-0552	<i>Circlip D.7</i>
2	RP6-3286	<i>Shaft for pedal stop</i>
3	RP6-3274	<i>Bead loosener pedal stop</i>
4	RP6-3282	<i>Bead loosener pedal</i>
5	RP6-0281	<i>Low nut M6</i>
6	RP6-0269	<i>Bolt VTE M6x20</i>
7	RP6-3272	<i>Bracket bead loosener pedal</i>
8	RP6-1356	<i>Spring T 2x12x54</i>

<i>Index #</i>	Part #	Description
9	RP6-1955	<i>Washer 6/15/0,25</i>
10	RP6-3273	<i>Shaft for spring</i>
11	RP6-3270	<i>Pedal shaft</i>
12	RP6-3271	<i>Elastic ring D.9</i>
13	RP6-0403	<i>Muffler 1 SPL F-1/8"</i>
14	RP6-3244	<i>90° connector 3182</i>
15	RP6-3284	<i>Bead loosener valve</i>



INFLATION PEDAL UNIT

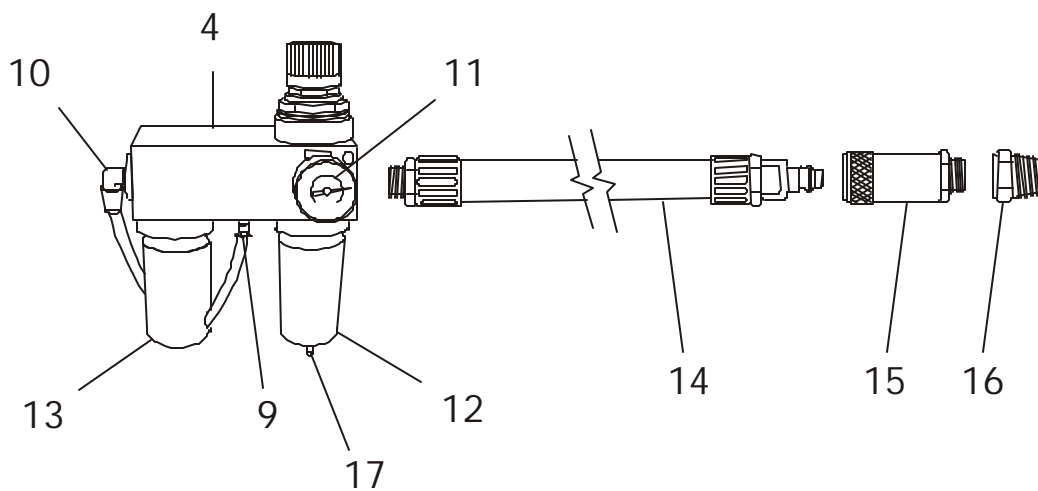
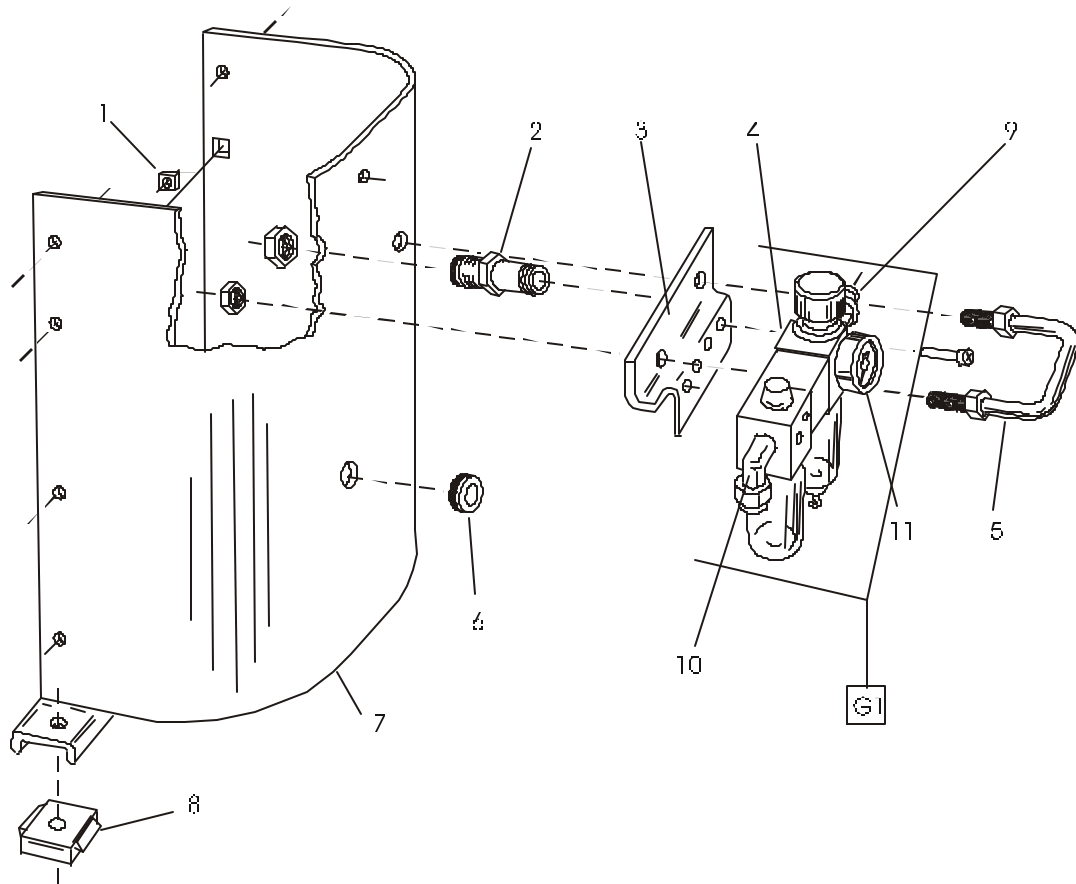
TC2000

REFER TO NEXT SHEET FOR PARTS DESCRIPTION LISTING

INFLATION PEDAL UNIT

<i>Index #</i>	Part #	Description
1	RP6-0267	Self locking nut M8
2	RP6-206019	<i>Bolt VTCEI M6x16</i>
3	RP6-0281	Low nut M6
4	RP6-3068	Pedal
5	RP6-2727	Pedal bracket
6	RP6-3067	Pedal shaft

<i>Index #</i>	Part #	Description
7	RP6-0552	Circlip D.7
8	RP6-0632	Two stage valve
9	RP6-0628	Bolt VTE M6x12
10	RP6-2731	Spring MGOH 16x75
11	RP6-3071	Spring 2x25 4x81
12	RP6-3063	Bolt VTE M8 x 80



RIGHT FOOT ASSEMBLY

TC2000

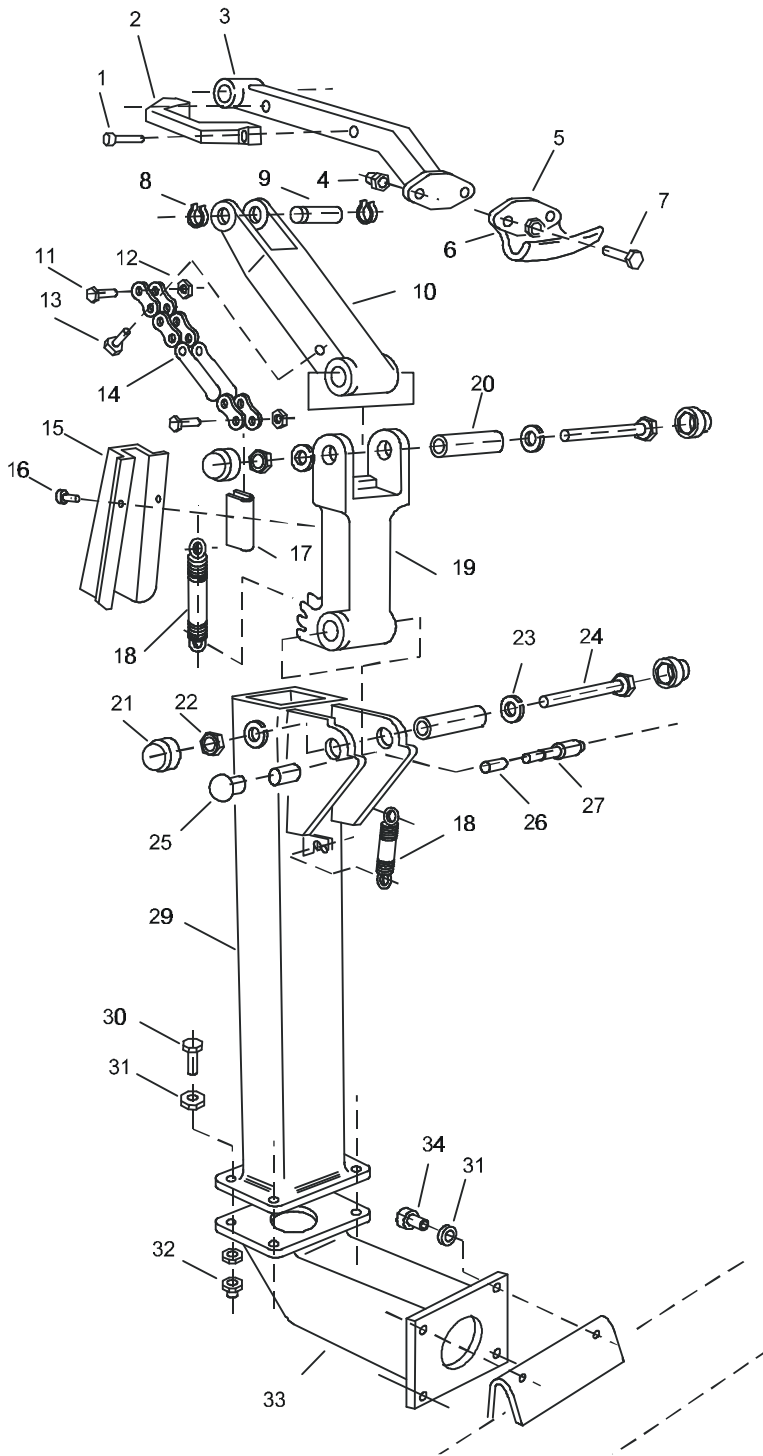
REFER TO NEXT SHEET FOR PARTS DESCRIPTION LISTING

Right Foot Assembly

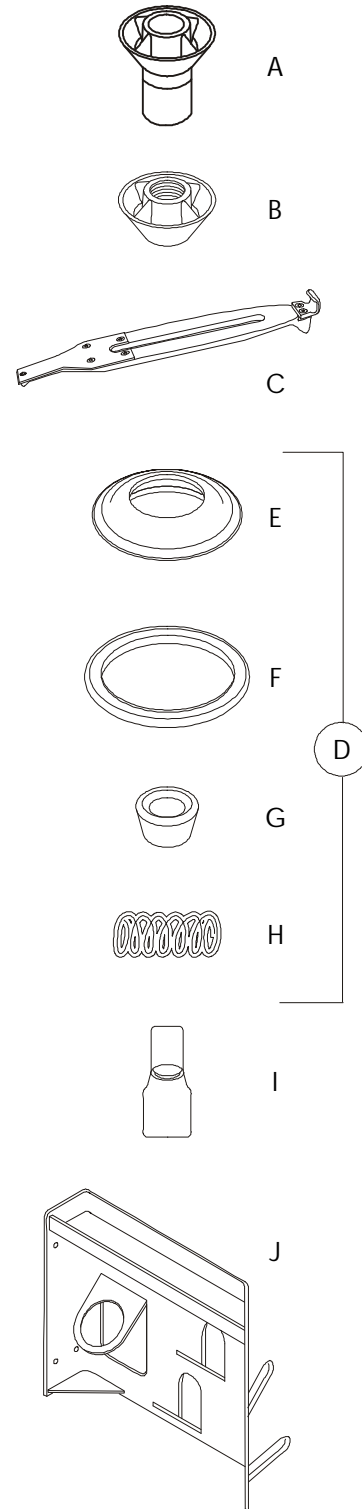
<i>Index #</i>	<i>Part #</i>	<i>Description</i>
1	RP6-0761	Locked nut M8
2	RP6-0145	Straight connector
3	RP6-3385	Bracket for group
4	RP6-3389	Filter/ lubricator/ regulator
5	RP6-0968	Protection for conditioning group
6	RP6-1413	Rubber guide for hose
7	RP6-3211	Right foot
8	RP6-2528	Rubber foot
9	RP6-3386	Connector 8-1/4"

<i>Index #</i>	<i>Part #</i>	<i>Description</i>
10	RP6-3387	Connector 8-3/8" 90°
11	RP6-3865	Gauge
12	RP6-3863	Filter Vial
13	RP6-3864	Lubricator Vial
14	RP6-3428	Hose Assembly (New Style)
15	RP6-1883	High Flow Quick Disconnect
16	RP6-3193	¼ Inch NPTF Connector
	*G1 RP6-3389	Conditioning group
17	RP6-6074	Filter Purge Valve

**This part is not available as a warranty item after 90 days past install date.
 For warranty claims after 90 days, individual components must be ordered.*



COLUMN KIT



ACCESSORIES

TC2000

REFER TO NEXT SHEET FOR PARTS DESCRIPTION LISTING

RP6-3199 Column Kit

<i>Index #</i>	Part #	Description
1	RP6-0256	Bolt VTCEI M8X16
2	RP6-0095	Handle
3	RP6-3404	Vertical arm
4	RP6-0267	Self locking nut M8
5	RP6-0343	Mount-demount head
6	RP6-0249	Washer D.8,4
7	RP6-0796	Bolt VTE M8x40
8	RP6-0255	Circlip D.25
9	RP6-0078	Pin D.35
10	RP6-1409	Horizontal arm
11	RP6-0963	Bolt VTE M5x20
12	RP6-1281	Self locking nut M5
13	RP6-0347	Bolt VTE M8x35
14	RP6-1130	Chain for spring
15	RP6-1498	Carter for spring
16	RP6-206019	Bolt VTCEI M6x16
17	RP6-1499	Pin for spring

<i>Index #</i>	Part #	Description
18	RP6-0162	Spring T 22,8x3x123
19	RP6-1154	Additional arm
20	RP6-0079	Pin D.25
21	RP6-2177	Protection cap
22	RP6-2185	Triblock nut M14
23	RP6-0251	Spring D.14,2x40x2
24	RP6-0253	Bolt VTE M14x140
25	RP6-0832	Ball Knob M14
26	RP6-1411	Spring 1,2x17,5x72
27	RP6-1341	Ratchet
29	RP6-3405	Post
30	RP6-0416	Bolt VTE M10x35
31	RP6-0247	Washer D.10,5
32	RP6-0246	Self locking nut M10
33	RP6-3355	Post extension
34	RP6-0240	Bolt VTE M10x20

**Group 20-1372-1
 Optional Alloy Wheel Column Kit
 (Not Illustrated)**

Part #	Description
RP6-3199	Column and articulating arm
RP6-2413	Mechanical bead pusher
RP6-2663	High performance bead lever

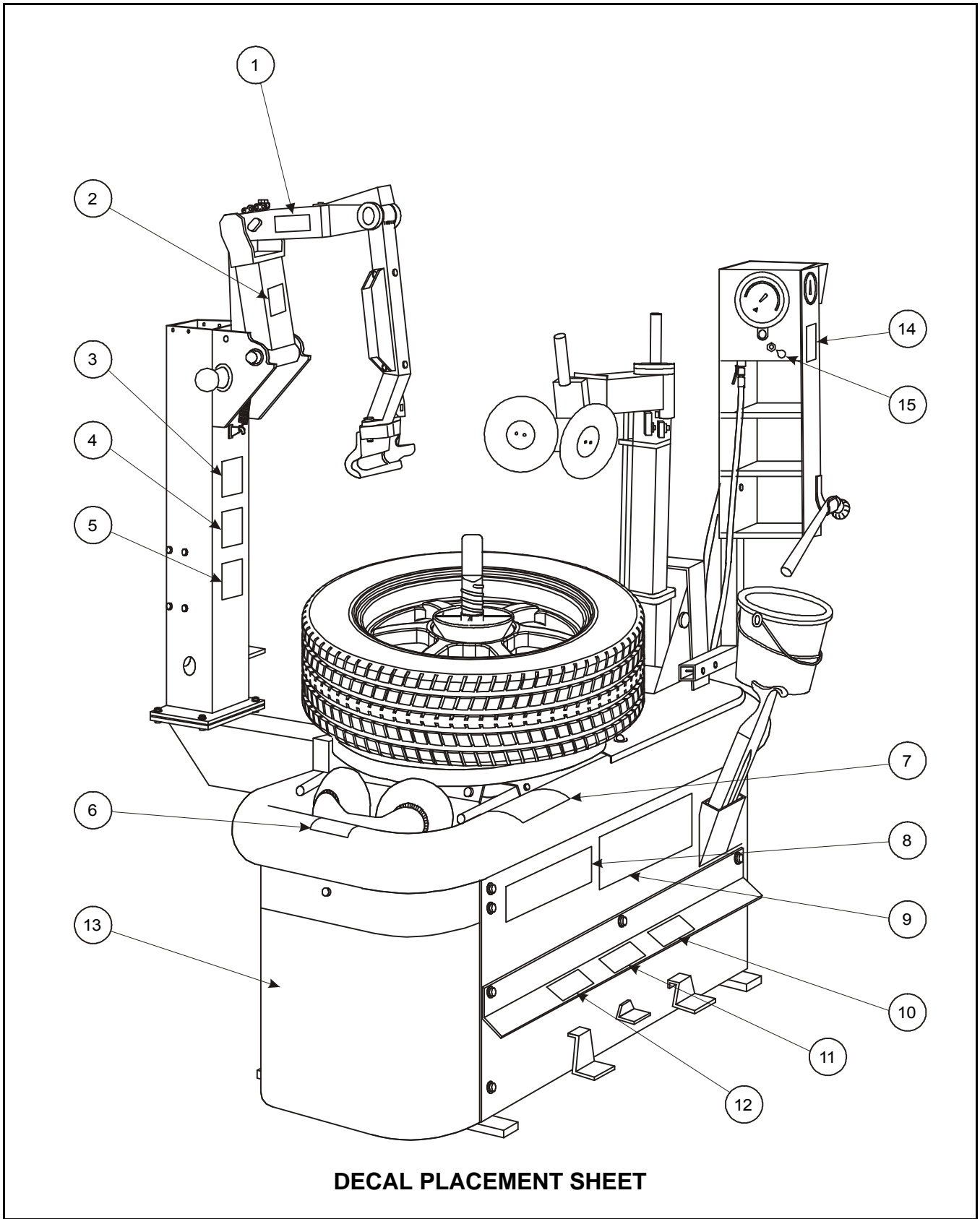
Part #	Description
RP6-0343	Extra mount / demount head
RP6-0326	Bead lever protector sleeve

Optional Accessories

<i>Index #</i>	Part #	Description
A	RP6-3592	Deep clamping cone
B	RP6-3593	Small clamping cone
C	RP6-70200E	Plastic coated mag tool
D	20-1375-1	Small center bore wheel kit (Consisting Of: E, F, G & H)
E	RP6-3594	Protection cup
F	RP6-3595	Protection ring

<i>Index #</i>	Part #	Description
G	RP6-3596	Extra small cone
H	RP6-3597	Spring
I	RP6-3598	Extension short
J	RP6-3606	Accessory storage tray
K	RP6-70210E	Mounting clamp-crop center (Not Illustrated)





DECAL PLACEMENT SHEET

TC2000

REFER TO NEXT SHEET FOR PARTS DESCRIPTION LISTING

Decal Placement Sheet

<i>Index #</i>	Part #	Description
1	128-435-2	<i>Decal, Remove clip on weights</i>
2	128-489-2	<i>Decal, Mounting arm inclination</i>
3	128-285-2	<i>Decal, Warning pressure</i>
4	128-284-2	<i>Decal, Read warning</i>
5	128-287-2	<i>Decal, Do not lean or reach</i>
6	128-590-2	<i>Decal, Warning bead breaker</i>
7	128-580-2	<i>Decal, Tire changing hazards</i>
8	128-279-2	<i>Decal, Hunter</i>

<i>Index #</i>	Part #	Description
9	128-581-2	<i>Danger, Label decal</i>
10	128-585-2	<i>Decal, Inflation label</i>
11	128-583-2	<i>Decal, Rotation label</i>
12	128-584-2	<i>Decal, Bead loosening</i>
13	128-593-2	<i>Decal, TC2000</i>
14	128-501-2	<i>Decal, Manual tire bleed valve</i>
15	128-323-2	<i>Decal, Wear eye protection</i>