

Update!

A NEWSLETTER FOR ALL PALMER/PLETSCH TEACHERS

SPRING 2016

HELLO TO ALL!

I hope you are all doing well and staying busy. Last fall was crazy for me—no wonder you haven't had a sewing update newsletter since early November! The biggest event was Melissa's December wedding to Roland Ellis in Port Macquarie, Australia, the town in which he grew up.



She designed and, together, we made her dress. It was lace over stretch silk using her McCall pattern 6834. It had many narrow long

pieces. I got out the Sobo glue to baste them together. Haven't done that for years!

In September Melissa and I went to Denver to film a class on fitting knits for Craftsy.com. Then the end of October, Marta and I filmed a 3-day fit workshop in Seattle for CreativeLive.com. For Marta and me, it felt like a great chance to document what we've worked over 40 years developing for future generations.

Melissa just moved to Berlin, where hubby will study for his doctorate. She will still be able to design for McCall Patterns and plans to do some writing as well as continuing projects for Palmer/Pletsch, like a new website—long overdue! Paula Daniels from Long Island, NY, attended our Philly workshop and Pamela Leggett told me I needed to hire this PP fan to work with Melissa on our website, so we did and she has been amazing.

Read on about more things happening at Palmer/Pletsch.

*Happy Sewing,
Pati Palmer*

Palmer/Pletsch
TEACHING SEWING SINCE 1973

Remember, all past issues of this newsletter can be read online at: www.palmerpletsch.com/teachers_newsletter.htm

PUYALLUP SEWING EXPO

After my busy fall, I was exhausted, so in January I mainly sewed the clothes I wore in the McCall, Vogue, Butterick Fashion Show at the February Sewing Expo in Puyallup.

Melissa has taken over the show from me and is commentating. It is so fun to drive to Puyallup with my daughter and to room with her during the show!

Helen Bartley, who is now teaching workshops with Marta and me (and becoming quite good at it, by the way), did seminars in Puyallup for the first time.

As you know, Marta has decided not to teach in Puyallup any longer—it is just too hard physically nowadays. (But she had so much fun in the past, as you can see in the photo below of her at a previous Sewing Expo.) Marta is still teaching the Fit workshop, Sewing Camp, and Fitting Camp (formerly Fit-a-Thon in Portland).



Pati, Helen Bartley, and Melissa at this year's Sewing Expo in Puyallup.

Marta Alto at a previous Sewing Expo



THE PALMER/PLETSCH PATTERN BLOG

Speaking of Helen Bartley, Melissa profiled her on the blog on March 4.

In February Melissa launched an intermittent series that she's calling "CSI Friday" that will feature profiles of our Certified Sewing Instructors. Her first one was about Blondell Howard, the "Sassy Sewer" from Baltimore.



Blondell Howard at a 2012 Fit Workshop taught by Pamela Leggett in Philadelphia.

In the March 4 post, Melissa tells us about Helen, whose business is called "Seam Divas."



Other recent posts have been about the series of free fitting videos Melissa created with Julie Brown of Fabric Mart that take viewers through the steps of the Palmer/Pletsch method of tissue-fitting patterns on their body. The focus is on fitting knits using McCall's #7246, a wrap dress designed by Melissa for McCall Pattern Company. These videos can be seen at <http://www.fabricmartfabrics.com/Fit-Along.html>

I hope you've been enjoying the blog. Melissa has been doing a great job!

WEEK TWO: FABRIC MART FIT-ALONG + PALMER/PLETSCH TISSUE FITTING METHOD

February 21, 2016

In episode 2, I fit the bodice of the dress on Julie. You see how to spot and do alterations for a high round back, narrow shoulders, prominent shoulder blade, full bust adjustment, forward shoulder and waist length. This week was by far the longest and most challenging. (thanks Julie!) but we get to encounter a lot of the common alterations people have on fitting a top or dress bodice! It's also a bit different because the design, being a wrap top, you have to remember to alter the right side of the pattern. We also talk about the small differences of fitting for a knit.

AND we just restocked our selection of fabric kits! New fabric choices now available! Check them out here: <http://www.fabricmartfabrics.com/Fit-Along-Kits/>

Hope you enjoy!! X Melissa



FIT-ALONG AND SEW-ALONG WITH JULIE AND MELISSA!

McCall 7246 Pattern
Fabric Mart Fabric For One Wrap Dress
Matching Thread
Body Map and Fit Worksheet

THE FABRIC MART FIT-ALONG KIT

This kit is to be used with the Fabric Mart Fit-Along video series. Hosted by Melissa Watson and Julie Brown, these videos take you through the steps of using the Palmer/Pletsch tissue fitting method to make a pattern fit on your body. McCall's 7246, a wrap dress, designed by Melissa Watson features a wrap style design, sleeve variations and dress length variations. This wrap can be made from a stable knit and a light weight woven such as shirtings, cotton blends, etc. A wrap dress can look great on any body type and with the help of tissue fitting, will make you look and feel even better.

The video series can be viewed at: <http://www.fabricmartfabrics.com/Fit-Along.html>

Kit contents contain a stabilizer knit as well as a pre-cut double knit or ponte knit that is a suitable weight for the bodice on this dress. Contents of fabric varies by kit, but will be either Polyester/Cotton or Polyester/Polyester Knits. The use of this type of knit will create a quality dress that will move with you and holds its shape.

Woven kits contain a printed rayon challis fabric 100% Rayon that is suitable for making a light and flowy version of this wrap dress.

We suggest pre-washing all fabric before use on a gentle, cold wash cycle. Lay flat or hang to dry.

This kit contains:

- 1 fabric for one wrap dress (package varies depending on what length dress you're making)
- Thread to match fabric
- McCall Pattern # 7246
- Body map and fit worksheet to help you record all the adjustments you will need to make

You will also need:

- Woven kits may need fast suggest using SewRight brand tape
- Ball, sewing machine and sewing machine
- Palmer/Pletsch Pattern Fitter's Name
- Palmer/Pletsch Light Interfacing for knit kit
- Palmer/Pletsch Vapor Interfacing for woven kit
- Refer to the Fit-Along series for other fitting supplies

*Rayon kits and other Palmer/Pletsch brand products can be found at www.palmerpletsch.com

To further expand your fitting knowledge, make sure to have one of the Palmer/Pletsch Tissue Fitting Method books handy!

Many thanks to our pattern collaborators.

FABRIC MART Palmer/Pletsch TEACHING SEWING SINCE 1973 McCALL'S

(FINAL) WEEK FOUR: FABRIC MART FIT-ALONG + PALMER/PLETSCH TISSUE FITTING METHOD!

March 06, 2016

Finally! This is the last week of the Fabric Mart Fit-Along! It was such a fun adventure working with Julie and Fabric Mart on this Palmer/Pletsch tissue fitting project. This week we go over how to prepare your cut fabric for fabric pin fitting, what to look for and adjust in fabric, and check out Julie's finished dress!

We are so sad that the fit-along is over but also happy, as it is a LOT of work! I look forward to continuing to do more video fitting guides for my McCall's patterns, as I hope this is something that is a valuable free supplement to a sewing pattern! Even though we work hard on all Palmer/Pletsch patterns to have fitting instructions in the guide sheets and alterations lines printed on the patterns, I think it can be really helpful to see visual examples on real humans!

For more fitting resources and examples check out the "video fit guides" or "fit-alongs" I did with McCall's for three of my patterns last year!

If you missed any of the fit-along weeks you can always check them out on my YouTube page!

Fabric Mart Fit Along WEEK FOUR!



would love you to fit and sew along with us! These kits go along with the Fabric Mart Fit-Along series so make sure to check them

NEW RAYON PRINTS!



MY FAVORITE NEW KNIT PRINTS!



PALMER/PLETSCH FACEBOOK PAGE

I have had many people friend my personal Facebook page, but to learn what is going on at Palmer/Pletsch, make sure you check out our **Palmer Pletsch Fashion Sewing** Facebook page. If you go to our website, palmerpletsch.com and go to the bottom left or right, you can like us by clicking on the Facebook button.

Melissa is doing the posting on behalf of the company.

PROMOTING OUR TEACHERS

First of all, I am embarrassed to say that we signed up a few of you to be our INTERFACING EXPERTS four years ago and we haven't put that page on our website yet.

The website you're familiar with is built and maintained using antiquated software. For a number of years now we've been looking at options for creating a new website using software and design that brings us into the 21st century. In the course of that, some things, like the Interfacing Experts page, got sidelined.

Over a year ago, we got a bid for \$25,000 to \$45,000 from a company that would build us a new website. We don't have that kind of money to spend! So that is where Melissa came in, and now Paula Daniels, whom I mentioned in my intro letter. We plan to launch the website this spring.

The new site will have the Interfacing Experts page where consumers and ASG and other groups can contact you directly. At right are the CSIs who offered to be part of this program.

Would you like to be one of our interfacing experts? If you have been teaching interfacing classes and would like to be listed, please let me know soon and I'll provide more information about the program and teaching tools we'll provide.

The new website will benefit *all* of our certified teachers. We feel the search for new teachers and classes will be

LOOK FOR SOMETHING LIKE THIS ON THE NEW WEBSITE:

The INTERFACING *Experts*

INVITE OUR INTERFACING
EXPERTS TO SPEAK AT YOUR
STORE OR TO YOUR GROUP

These Palmer/Pletsch certified sewing instructors are experts in teaching others how to use interfacings. Turn to them when you want a seminar for your association or in your store.



Palmer/Pletsch
CERTIFIED SEWING INSTRUCTORS

superior to what it has been. The new design should enhance the marketing of everyone's classes. There will even be a map where people can click on their location and nearby teachers will pop up. We also now allow your photo, website, and contact info in the CSI listing.

If you have not joined the CSI program and are not listed on our website, you may want to apply and see if the new website drives more customers to your classes. It is optional of course. The cost is \$39 a year (half the price we originally charged, to be more affordable to more teachers and still cover some of the costs of our time).

George, Linda, and I work on keeping the teacher listing page up to date. George lets you know when you need to renew. If someone doesn't renew, it may be they are no longer teaching or haven't seen value. They come off the list so that consumers contact them and become disappointed when they find out the person is not active.

It has worked well. Check out the list, which is peppered with photos of our teachers.

We are also finding other ways to promote our teachers, especially in light of teaching fit. For example, when we get invited to speak at a show or ASG and the like, I often see if we have a teacher close by and, if so, match them up.

As you already read on page 2, Melissa is doing a teacher feature on our blog on a regular basis. Contact her at mwmelissawatson@gmail.com if you have things you'd like to share.

Also, I wrote copy about six ways to learn to tissue-fit for our

MAKE 2016 THE YEAR YOU LEARN THE PALMER/PLETSCH TISSUE-FITTING METHOD

Tissue-fitting *works*. Pati Palmer says, "What you see is what you get. If it fits in tissue, it will fit in fabric. If the design doesn't look good on you in tissue, cut your losses and go for a new design."

OUR NEW FIT PATTERN M7279

McCALL'S
THE *Palmer/Pletsch*
TISSUE-FITTING METHOD M7279
STANDARD GRADE FIT PATTERN

LEARN TO FIT
All sizes 6-22. Includes tissue-fitting guide and pattern pieces. The number of pieces varies by size. Please refer to the pattern for details.

BE SURE TO READ OUR NEW PALMER/PLETSCH PATTERN BLOG

LEARN TO TISSUE FIT SIX WAYS:

- ◆ Learn from a trained **Palmer/Pletsch Certified Sewing Instructor (CSI)** near you. Go to palmerpletsch.com/teacherlist-CSI
- ◆ Take a four-day or two-day, in-depth **fit workshop** in Portland, Oregon, Seattle, Michigan, or Philadelphia.
- ◆ **Palmer/Pletsch "Real People" books** include step-by-step illustrated how-tos.
- ◆ Watch our collection of **DVDs** with fitting guidance.
- ◆ Sign up for our **online classes**.
- ◆ The **guidesheets in our patterns** include tissue-fitting instructions.

VISIT **palmerpletsch.com**

Palmer/Pletsch
TEACHING SEWING SINCE 1973

ad in the winter issue of ASG's *Notions* magazine, above, and I also used similar copy at the Puyallup Sewing Expo. Teachers were #1 on the list!

Puyallup Promo Copy: Six Ways to Learn to Tissue-Fit

Palmer/Pletsch Certified Sewing Instructors — palmerpletsch.com/teacherlist-CSI.htm

Palmer/Pletsch patterns for McCall's • Palmer/Pletsch fit DVDs and books

Palmer/Pletsch Hands-on Workshops in four US locations as well as from our teachers in England, Australia, and New Zealand

Craftsy.com, search Melissa Watson

Creativelive.com, search Marta Alto — a 3-day workshop to watch at your leisure.

Live at the Puyallup show: Puyallup class 2612C on Sat — Melissa fits Pati

FYI, we spend about \$200-\$600 an issue on ads in *Notions* and try to include something about where people can go to learn.

McCALL'S 7279

I wrote about our new fit pattern (shown in the AGS ad) in the last newsletter. We continue to be excited to have this new teaching tool. To make it easier for our teachers to always have the right size, all sizes 6-22 are in one envelope just like the new pant fit pattern M6901. NOTE: You can still get the special price from McCall's on this pattern.

As Marta and I developed the tissue-fitting method (we started doing it in the 1970s at Meier & Frank department store) we came to agree

it sort of became the “muslin” for fitting half of the body (the larger half if there was one). It is amazing how similar the fit in tissue is to the fit in fabric. With heavy or stiff fabrics, we make the side seam allowances 1” just in case we need more width.

A Seam Allowance Problem

As often happens, the first printing had a small error. I had requested 1” side and waist seam allowances and when I got the printed pattern and first used it, I noticed they weren’t included. I wrote to McCall’s and got this answer from Ruby:

Pati

I checked the tracing, unfortunately the skirt has only 5/8” at side seam and waist seam. The original block had the 1” seams. I am researching to see what happened here. Will get back to you.

She wrote back: *We will fix the seam allowances and print and replace the tissue in current stock. I will let you know when the corrected file is sent for printing and the printing schedule.*

So check the seam allowances when teaching. The reason I discovered this was because we tissue-fitted. Another advantage of tissue-fitting!

McCALL’S 6172 JACKET PATTERN DISCONTINUED

Our jacket teaching pattern M6172 has been discontinued and it may be quite a while before we have a new tailored jacket pattern. M6172 is about as perfect a pattern as we have ever designed for a jacket class, but patterns do have a life cycle, unfortunately.

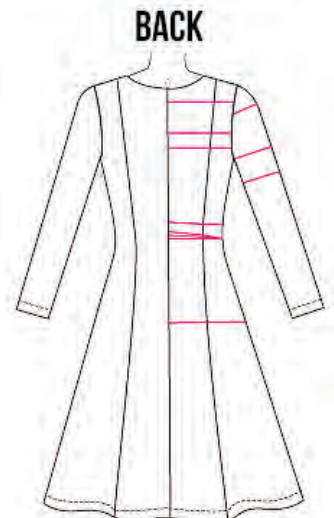
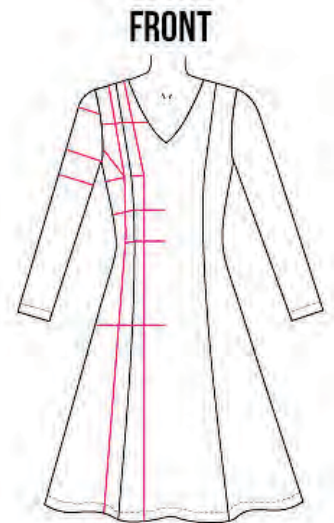
Since McCall’s still has some inventory on this pattern, **I recommend that teachers order some backup from McCall’s** directly, where you get the best price. Orders go to Nancy Naninga: nancyn@cusspt.mccall.com Sizes are BB (8-14) and FF (16-22)



NEW PRINCESS FIT DRESS PATTERN NOW AVAILABLE

I wrote about M7352 in the last newsletter, but wanted to let you know that it’s now available. We just got inventory in the warehouse this week. I saw the exact dress in a print on a mannequin at Nordstrom last month. Here’s what we say about it on our website:

This dress is not only right on target fashion-wise, but includes the bonus of learning to fit a shoulder princess dress. The flared skirt is great for fuller hips or thighs. The alteration lines printed on the tissue and the fitting information in the guidesheet will help you with all of your adjustments. This pattern includes our latest instructions for a full bust adjustment for shoulder princess seams.



MORE NEW ITEMS FROM PALMER/PLETSCH

LEARN TO SEW HOME STUDY PROGRAM

Many of you may have met Janet Corzatt when you were here in Portland taking workshops. Janet has taught our Beginning Sewing Teacher Training workshop for years. Now we've introduced her home study course for those who want to learn to sew.

Janet's series of four levels is geared toward the beginner, covering all the basics to help people start sewing on their own. Step-by-step pattern instructions go through the construction of an apron, a kimono-style robe, and two-piece pajamas. The course also teaches how to sew zippers, elastic, buttonholes, and much more.

If you know people who want to learn to sew but aren't ready or able to sign up for classes, this is what they need.

Some of our teachers have bought the DVDs to use as a brush-up for teaching their beginner classes. You certainly could use the handouts on the DVDs to teach beginner classes yourself, but if you want the full teacher-training experience, join Janet in the **Beginning Fashion Sewing Teacher Training Workshop** in Portland June 24-27, 2016. You will be the "beginner" for those four days and go home with the completed notebook and garments, ready to teach. You will also get a teacher training CD to help you prepare and market your classes.



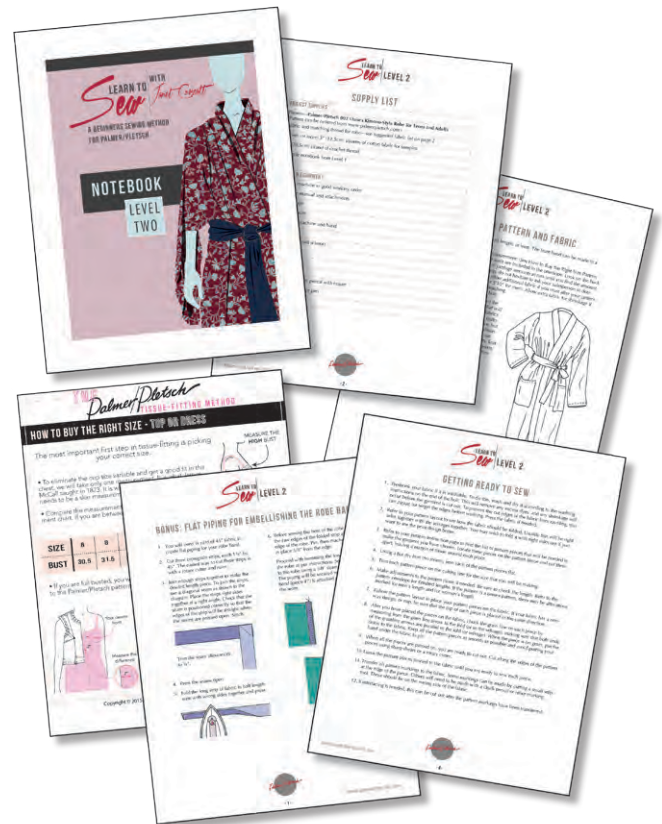
LEARN TO SEW WITH Janet Corzatt
A BEGINNERS SEWING METHOD FOR PALMER/PLETSCH



Each level includes a DVD, templates, and notebook pages.

Each class is approximately 12 hours, including watching the DVD, sample making for the notebook, and sewing the project. The complete four-level course can be completed in approximately 48 hours, depending on the skill level of the student.

The classes are based on our **Learn to Sew Patterns**.

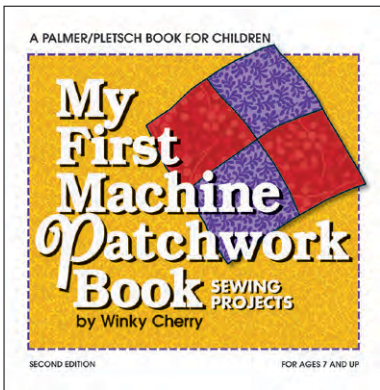


Right now we're offering a special on the entire program:

The Complete Learn to Sew with Janet Corzatt Program~\$99.95

for all four levels of DVDs plus two patterns (regularly \$139.80 if sold separately)

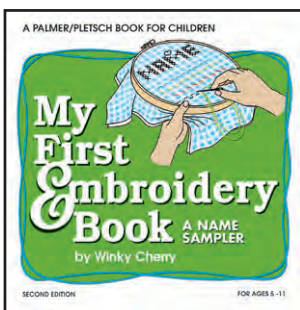
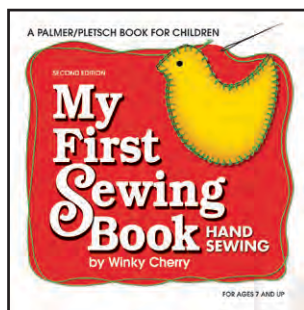
NEW! full-color updated Second Edition



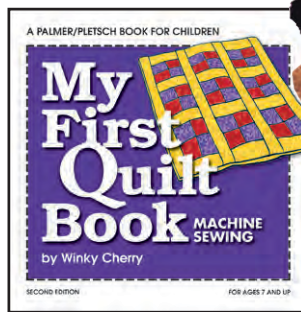
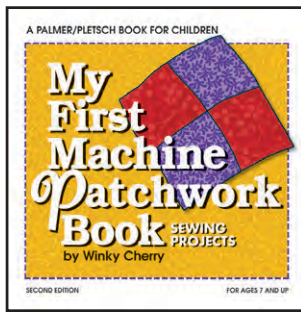
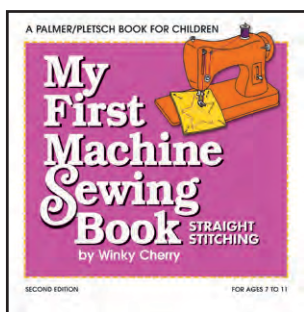
THE SERIES OF MY FIRST SEWING BOOKS IS NOW COMPLETE WITH THE PUBLICATION OF THE SECOND EDITION OF **MY FIRST PATCHWORK BOOK.**

A few years ago we updated all but one of the My First Sewing Books, converting them to full color, but *My First Patchwork Book* languished on the to-do list, until now. This program is such a wonderful way to introduce children to sewing, with the three hand sewing and three machine sewing book/kits. If it's been a while since you looked at these, visit the children's page on our website to "Look Inside."

HAND SEWING

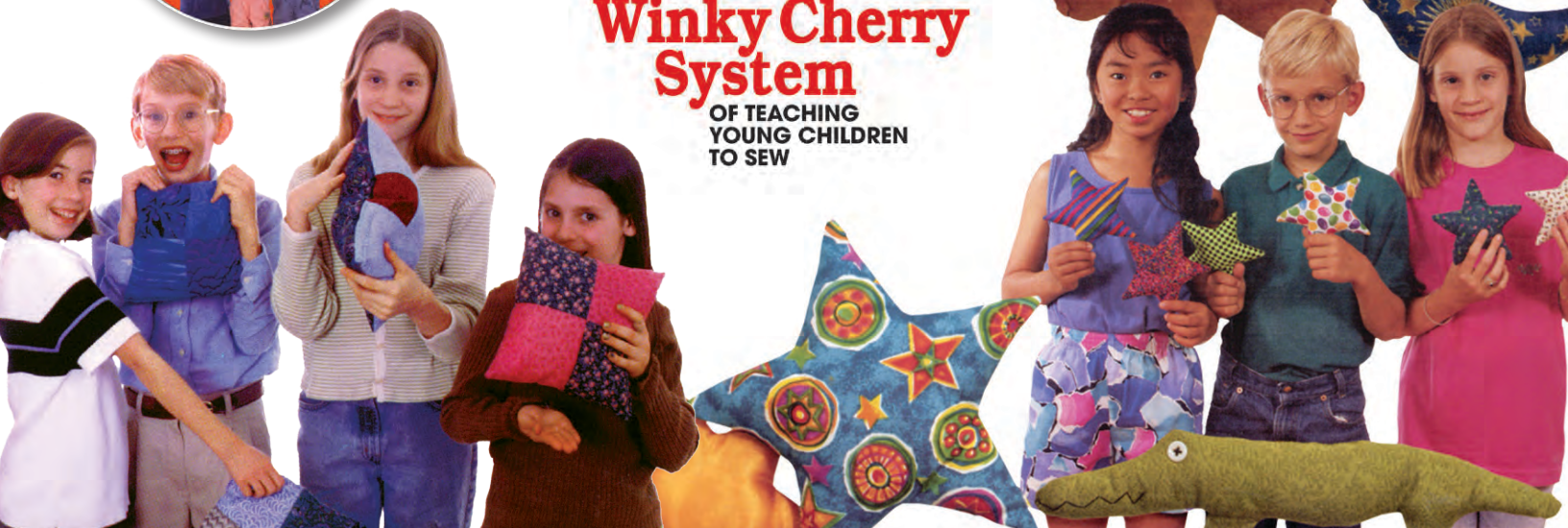


MACHINE SEWING



Winky Cherry also has a manual and DVD that tells how to set up sewing classes for children as young as five years old.

The Winky Cherry System
OF TEACHING YOUNG CHILDREN TO SEW



PANT FITTING ADVICE

A woman named Leslie Coduti emailed us frantically that she was going to teach a pant class and the next pant workshop and teacher training wasn't until May in Michigan so what could she do NOW! Melissa sent her a discount to her Craftsy.com pant fitting class. This was her response:

Dear Melissa:

Thank you for the Craftsy course. I think you did an amazing job with it. Despite having gone through the book and your Mom's DVD I picked up tips from you that will undoubtedly help me in my next attempt and hopefully a better outcome.

I have attached photos of the front, side and back. They are comfortable to wear; in fact I have never had pants that did not pull at the thigh. As I said before, I have thighs like hams and my calves are large too. I can say that the crotch is perfect and they fit the bum, but I would like to improve the fit more. I did use your teaching pattern M6901 in a size 18w as my hips are 42. Can you give me any suggestions or guidance?

If you feel they do not look too bad I would like to post one in our course. I will wait to hear from you before doing so.

The fabric is unknown and inherited. It washes and dries well and burns to a fine ash, but they have a woolly feel to them. They are definitely not wool however. The weave is somewhat course and accepts steam very well. It was a fabric I had that I did not mind experimenting on.

My husband says that the pants look really nice especially considering how very ugly the fabric is.

Thank you again and I really appreciate your help. My goal is to be the best Palmer/Pletsch teacher for pants fitting and construction in my area.

Leslie Coduti

Dear Leslie,

Melissa is on a big project so I will try to give you advice. First, good job! You are almost there. Your pants look good, but I can see a few more tweaks. Your right hip looks a bit fuller/higher than your left. I can tell by the diagonal wrinkles pointing to the waist and side. Pull that side down until the wrinkles disappear. You may need to sew the waistband on higher so the pants can drop down.

If, after you pull them down, decide if you need to add another dart toward the side back waist.

The front looks good, but a little bit full at center front. Next time straighten the center front seam by moving the CF stitch line at waist $\frac{1}{2}$ " and redraw to nothing at the curve. This allows more tummy width. You might then take the side seams in a little to remove some of the fullness. I don't "think" you need to take in the front inseams at this point.

Enjoy Janet Dapson's class and good luck on teaching!

Pati Palmer

Leslie Coduti models pants and Pati offers fit suggestions



NEWS FROM YOU

From CSI Janet Dapson: MICHIGAN KNIT WORKSHOP OCTOBER 2015



Hi, Pati,

Here are photos from my first **Fit & Sew Knits** workshop:

Judy is modeling a top from

Angela Wolf; very nice styling with ruching at the side seams. The fabric is a lightweight slub knit, probably polyester. Her skirt is an unusual stretchy fabric that someone gave her years ago. (It was a quite interesting composition. I could not tell whether it was knitted or woven!) She had just enough to

wrap around her, so she sewed one seam up the back and added an elastic waist. She did not have to sew a hem because the hem edge was finished.

Below, Karen is wearing a princess style from a Canadian indy pattern (I don't recall the name). She really wanted to try a princess style in a knit fabric. The fabric is polyester 1x1 rib knit, which did grow, so she had to take it in after fabric fitting. In the second photo the top is a light 2x2 rib knit using a McCall's pattern that has a diagonal panel to create an angled hemline. (Easier to work with than we expected, and it did not grow.) She is also wearing the no-side-seam pant in a ponte knit. Karen did full bust adjustments on both tops; the second top has darts.

Both ladies made their first tops using M6964. Surprisingly, they had independently purchased the same heathered polyester knit fabric from JoAnn's, but in different colors. Neither of them liked the behavior of the fabric, so they did not finish those tops. But, as you say, they learned.

Now, different topic: I received the email about the new fit pattern. It's wonderful that McCall's was willing to work with you to create a new fit pattern AND include instructional material in the catalog. My compliments to you, Marta, and Melissa!

Janet

*Thank you Janet for taking the photos in front of a blank wall! Everyone submitting photos should do the same.
~ Pati*

Judy



Karen



From CSI Mandy Bengeyfield, Surrey, UK

Hi Pati, Marta & Melissa

Wow, you girls have been busy! I've been very indulgent and have purchased all your Craftsy classes plus the CreativeLive workshop. Even though I've been teaching the Palmer/Pletsch method for 5 years now it's always good to get a refresher from the masters! Living in the UK I can't get to workshops as often as I'd like so these online versions are a great way of getting my PP fix. It's great to see Melissa taking up the reins. Pati, at last you and Marta can take a well-earned break!

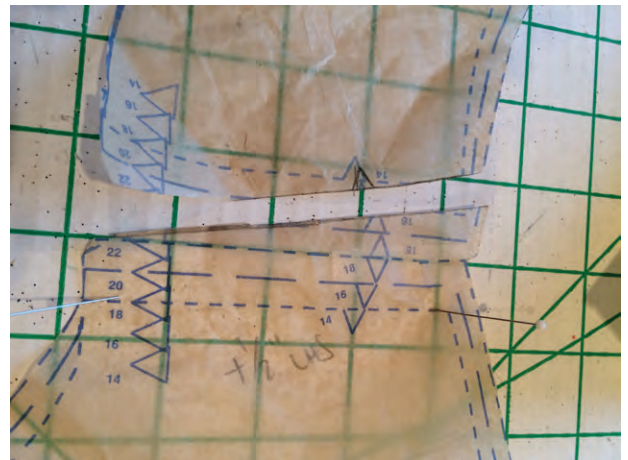
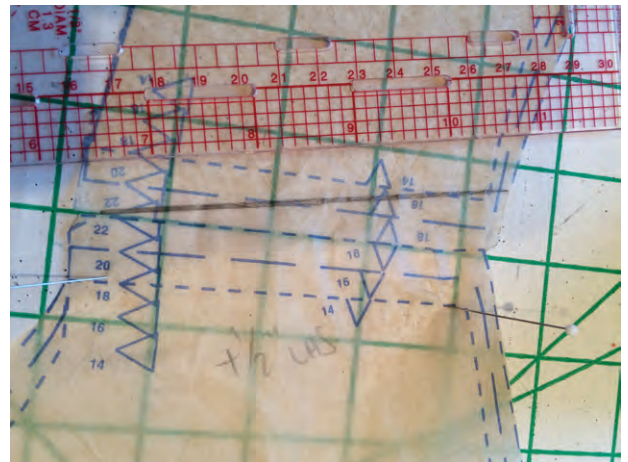
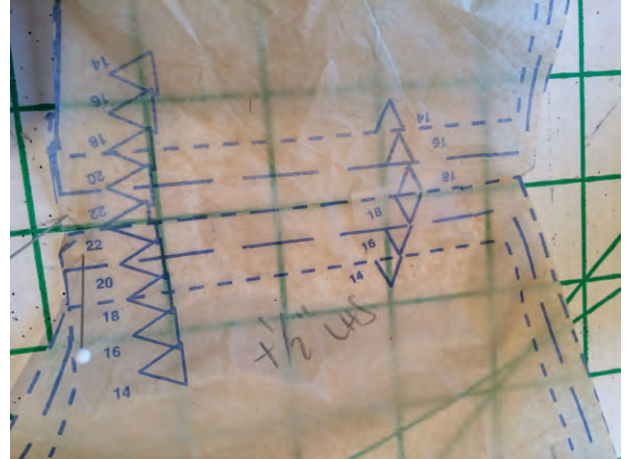
I picked up some really good tips, in particular how to establish the apex on a non-PP pattern. When I first started altering patterns for myself I didn't like the fit when using the printed apex on the pattern, mainly because it makes the bust darts too long. So I did exactly what Marta does in the online workshop and stepped the apex back an inch. It worked great! But I wasn't really sure it was going to be ok to teach that or whether it would be confusing for my students, so I stuck to the method of using the printed apex when teaching. But then I felt bad that the results weren't great, so eventually I just went with my gut, eyeballed where I thought line 1 should be and everyone seemed happy. But now, thanks to Marta's demo, I can be a bit more technical and show them how to gauge for themselves where to draw line 1 according to their own apex. Happy days!

The other common alteration people seem to find tricky to get their heads round is the forward shoulder, specifically visualising the seam line versus the cutting line on front and back. I tried to come up with a method that made more sense to new students and, so far, it works really well. I've attached some photos, but essentially after tissue-fitting I stick front & back shoulders together along the cut edge. Then I mark where the seamline should be on the front, add seam allowance and cut along my new line. Then the excess from the front is automatically added to the back in one action. I was a bit apprehensive about how this would work on the new blouse fit pattern with the grown-on collar, but it was fine. I just matched the shoulder part and let the collar sections overlap (because the collar is not affected by the forward shoulder adjustment). I do a pattern-fit drop-in session once a month where previous students can bring any new or more challenging patterns for help with the fit, and they have all found this new method easier to understand and do. I'd be interested to hear what anyone else thinks.

Mandy, Thanks for the pictures and I will share in the teacher newsletter. I like the way you cut the extra off the front and taped it to the back. Should we show this in the revised fit book?

Pati

*forward
shoulder
adjustment*



**From CSI Catherine Azzone,
Fayetteville, PA**

Dear Pati

Know you are crazy busy this week but I just wanted to tell you that I picked up the new Knit Book to prep for my workshop with Pam. I am only a quarter of the way through and want to say that I really like the tweaks you have added to the fit process. It is wonderful how you are and have been so open to continually improving a process you have worked on and with for so long.

Enjoy!!

Best always

Catherine Azzone



**From CSI Anne Duty,
Woodville, Ohio**

Hi Pati,

I am a Palmer/Pletsch teacher in Ohio. I just wanted to share a teaching success with you.

In a recent tissue fitting class, I had a student bring an old Vogue Pattern #8544. I think it's from the 1990s. While I suggest that students bring the Palmer/Pletsch Fit patterns to the class, I do teach tissue fitting for all patterns. The pattern is a princess seam dress with sheer sleeves and yoke. The dress was to be worn at an event in less than two weeks!

We tissue fitted the dress in class. The student purchased fabric on her way home. The following week she came for a fitting which only required a bit

of tweaking. She took the dress home to finish it and wore it to the event!

And she is signed up for more classes!

Thank you for developing this wonderful method!

Sincerely, Anne

Anne,

Thank you for sharing. It reconfirms what I believe, but sometimes I read blogs etc. that say they don't like tissue-fitting and prefer to make a muslin. Then I begin to think I am in a glass bubble, surrounded by tissue-fit fans and maybe it is not used as much as I think. So hearing this is great news.

Thanks.

Pati

Earn CSI Professional Development Units for submitting articles to this newsletter.

REVIEW US ON GOOGLE!

As part of our expanded online presence, in addition to the new website, Facebook, and the blog, we've finally gotten our Google listing updated.

Getting "Google Reviews" really helps us when people search for Palmer/Pletsch (or even "sewing") on the Web. We'd love it if you would go to www.google.com and search for Palmer/Pletsch. Photos and company information should show up in the upper right corner of your browser window. Look for the "Write a review" button. You can also see other reviews that have been written. The more the merrier! If more people come to our website, our teacher list will also get more traffic and hopefully benefit you!!

Thank you so much!

Pati Palmer