

CALIBRE
DESIGN
AWARDS
2018

Team Nominations

evolve

MAY 18, 2018

BEVERLY HILTON HOTEL

IIDA-SOCAL.ORG



Caltech CAST [Center for Autonomous Systems & Technologies]

Nominated by: CO Architects
Caltech - CAST [Center for Autonomous Systems & Technologies]
John A. Martin & Associates, Inc.
Matt Construction Corp.



Maywood Center for Enriched Studies

Nominated by: DLR Group
LAUSD
Maharam
Newson Brown Acoustics
Roshanian and Associates, Inc.
SJ Amoroso Construction Co., Inc.



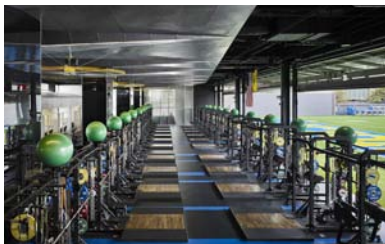
Point Loma Nazarene University Nicholson Commons

Nominated by: HED
Bycor General Contractors
Cultura
Grant and Associates
Michael Wall Engineering
Orness Design Group



Quinn-Martin Renovation

Nominated by: Plana Architects
The Buckley School
Hathaway Dinwiddie Construction Co.
Kalban Architects
Property Development Group



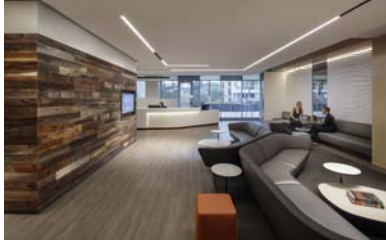
University of California, Los Angeles, Wasserman Football Center

Nominated by: ZGF Architects
Ceilings Plus
Colin Gordon Associates, Inc.
Group KG on behalf of CP
PCL Construction Services, Inc.
Southland Industries



Attitude Health Club at the Wilshire Grand

Nominated by: AC Martin
Artcrafters Cabinets, Inc.
Cinnabar California, Inc.
Pulp Studio
Purchasing Management International, L.P.
Taslimi Construction



Cedars-Sinai, Playa Vista Physician Office & Urgent Care

Nominated by: ZGF Architects
Brand ID Graphics
Moroso
Pivot Interiors
Shaw Hard Surface
Stone Source



G-Cubed

Nominated by: Skidmore, Owings & Merrill LLP
CBRE Global Investors
HLB Lighting Design
Jensen Hughes
Swinerton



Kaiser Baldwin Hills

Nominated by: HOK
HLB Lighting Design
Kaiser Foundation Health Plan, Inc.
Pivot Interiors
Tangram
Turner Construction



Kaiser Permanente Irvine Medical Center Build-Out of Levels 5&6

Nominated by: SmithGroupJJR
ARUP
BKM
G|M Business Solutions
Kaiser Permanente
Turner Construction



Kaiser Permanente Market Street Medical Office Building

Nominated by: Taylor Design
Tandus Centiva
Designtex Wallcovering
DIRTT
Signature Flooring
Stonesource



NVision Eye Centers

Nominated by: Gensler
Empire Construction
Level Project Management
PDA Engineers



Sharp Rees-Stealy Rancho Bernardo Medical Office Building TI

Nominated by: HKS Architects Inc.
Charlaine Architectural Signage
Cunningham Group Architecture, Inc.
McCarthy Building Company
Parron Hall
Sharp Rees-Stealy Medical Centers / Sharp Healthcare



The Alexandria at Torrey Pines Pre-Function Space

Nominated by: Gensler
Alexandria Real Estate Equities, Inc.
DPR Construction
ICE San Diego
Rothermel Associates
Spooners Woodworks



Dekkadance and Sora at the Wilshire Grand Tower

Nominated by: AC Martin
Artcrafters Cabinets, Inc.
JB Marble & Stone
Purchasing Management International, L.P.
Taslimi Construction



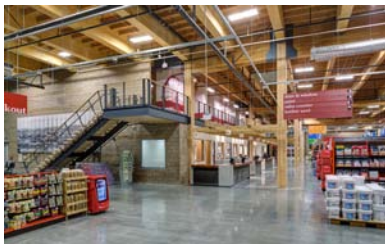
Don Francisco's Coffee Casa Cubana

Nominated by: Omgivning



Dongpo Kitchen

Nominated by: CallisonRTKL
CalAsia Construction
Meizhou Dongpo
Universal Studios



Ganahl Lumber South Bay

Nominated by: Withee Malcolm Architects
Englekirk Structural Engineers
Ganahl Lumber Company
Nikolakopoulos & Associates Inc.
Oltmans Construction Co.
The Sullivan Partnership



InterContinental Hotel at the Wilshire Grand Tower

Nominated by: AC Martin
Brandow & Johnston
Montbleu and Associates
Purchasing Management International, L.P.
Turner Construction



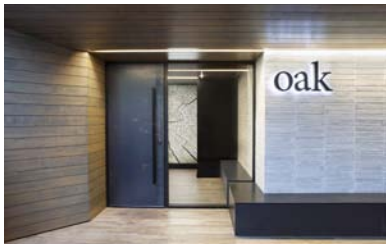
The Jeremy

Nominated by: Skidmore, Owings & Merrill LLP
JTI Millwork
Lawson Fenning
Mirage Builders, Inc.
Trademark Concrete
Wendy Haworth Design Studio



La Boucherie at the Wilshire Grand Tower

Nominated by: AC Martin
Artrafters Cabinets, Inc.
Pulp Studio
Purchasing Management International, L.P.
Taslimi Construction



Oak

Nominated by: IA Interior Architects
Interior Office Solutions
Priority Workforce
Rancho Laguna Builders



Shinola

Nominated by: Little
Gachot Studios
Shawmut Design and Construction
Shinola



Aventine Lobby

Nominated by: Gensler
Ehmcke Sheet Metal Corp
KMP Plumbing
KPFF Consulting Engineers
Prevost Construction
RB Consulting Engineers



Imperial Beach Library

Nominated by: Delawie
Domus Studio
Jeff Katz Architecture



407 North Maple Drive Plaza

Nominated by: NBBJ
Matt Construction
Pamela Burton and Company
Thornton Tomasetti



Airborne Systems

Nominated by: H. Hendy Associates
Airborne Systems
City of Santa Ana
Savills Studley
Turelk



Awesomeness

Nominated by: Skidmore, Owings & Merrill LLP
ARC Engineering
AwesomenessTV
HLB Lighting Design
Howard Building Corporation
Nabih Youssef Structural Engineers



Confidential Biotech Company, Next Generation Workplace

Nominated by: NBBJ
HDCCO / Lendlease
Limbach
Taft Electric



Edwards Starr Atrium

Nominated by: LPA
Acentech
AVI-SPL
DPR Construction
The Edwards Life Sciences Team
Tangram



Fandango

Nominated by: Wolcott Architecture | Interiors
Brilliant Lighting Studio
Corporate Contractors
Cresa
Systems Source
We Are Matik



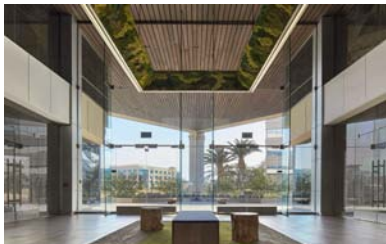
i3 Campus

Nominated by: Perkins+Will
exp
G/M Business Interiors
Hope-Amundson
Office of James Burnett



Illumina, Building 6

Nominated by: EwingCole
BNBuilders
DEC Engineers, Inc.
DGA Planning
Hope-Amundson, Inc.
MPE Consulting



Intersect

Nominated by: IA Interior Architects
CDG Builders
Hines
Interior Office Solutions
JLL
LandLab



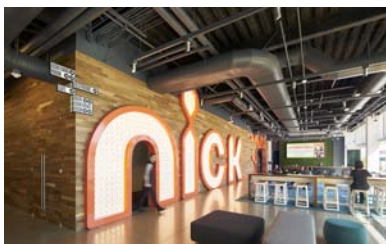
Mazda North American Headquarters

Nominated by: LPA
Cushman Wakefield
JLC Associates
Mazda North American Headquarters
Pivot Interiors
Systems Source



Morita Building at Sony Pictures

Nominated by: Gensler
ARC Engineering
CW Driver
Sony Pictures Entertainment
Structural Focus
Western Office



Nickelodeon West Coast Headquarters

Nominated by: STUDIOS Architecture
Environmental Contracting Corporation
KSA Design Studio
Struck
VVA Project Managers and Consultants



Paul Hastings LLP Los Angeles

Nominated by: Rottet Studio
ARC Engineering
E2 Lighting
Environmental Contracting Corporation
t : s : p project management
Western Office



Vans Global Headquarters

Nominated by: Rapt Studio
Cushman & Wakefield
Howard Building Corporation
Vans



Aftershock

Nominated by: OKB Architecture
21st Century Fox
Corporate Contractors
Image Options
Lam & Kaainoni Engineering Corp.
Unisource Solutions, Inc.



AutoGravity

Nominated by: Gensler
AutoGravity
Cushman & Wakefield
The Irvine Company
Pivot Interiors
Snyder Langston



BCG: Digital Ventures

Nominated by: R&A Architecture + Design
Howard Building Corporation
Boston Consulting Group
Tangram Studio



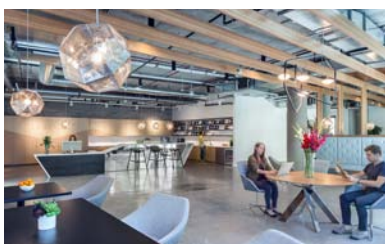
Digital Services Client

Nominated by: Klawiter and Associates
Colliers International
Haworth
Light Build Design
Pacific Office Interiors
RMS Project Management, Inc.



Interscope Records

Nominated by: Gensler
ARC Engineering
Corporate Contractors
KGM Lightng



Legend 3D

Nominated by: HLW International LLP
AMA Consulting Engineers
Howard Building Corporation
KGM Architectural Lighting
The Sheridan Group
t : s : p project management



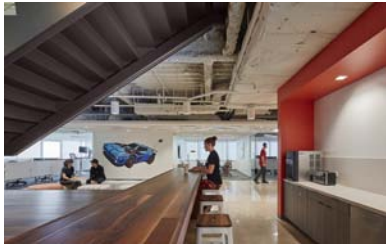
Otonomy

Nominated by: Gensler
 Alexandria Real Estate Equities, Inc.
 BN Builders
 Otonomy
 Project Management Advisors, Inc.



PMK BNC

Nominated by: Gensler
 CBRE
 Clune Construction Co.
 Cushman & Wakefield
 KPFF
 Syska Hennessy Group



Psyonix

Nominated by: Ware Malcomb
 Cultura
 Hope-Amundson
 Idibri
 Lockrul Construction
 MPE Consulting, Inc.



Steelhead Productions / Deutsch Advertising

Nominated by: HLW International LLP
 ARC Engineering
 Deutsch/Steelhead
 Newson Brown Acoustics LLC
 RSE Associates, Inc.



Thales InFlyt Experience: Building A Community at Work

Nominated by: Ware Malcomb
 Savills Studley
 Steelcase
 Tangram
 tk1sc
 Turelk



WD-40 Company Main Offices

Nominated by: ID Studios, Inc.
 Back's Construction
 Bentley Mills
 bkm
 WD-40 Company



ZestFinance

Nominated by: Wolcott Architecture | Interiors

ARC Engineering

Black Ltd

Tangram Studio

Wiedenbach Brown

ZestFinance

WORK LARGE



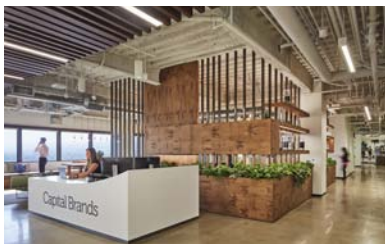
Akerman LLP

Nominated by: Wirt Design Group
Akerman LLP
Corporate Contractors
JLL
Rising Realty Partners
SCI Lighting



Broad Green Pictures

Nominated by: Gensler
Cini Little International
Corporate Contractors
HLB Lighting Design
Newson Brown Acoustics
Pivot Interiors



Capital Brands

Nominated by: HKS Architects Inc.
AMA Consulting Engineers
eSquared Lighting
Gardiner & Theobald
The Sheridan Group
Sierra Pacific Constructors



CBRE UTC

Nominated by: Gensler
DPR Construction
House of Hoard
Interior Investments
KGM Lighting Designer
Texture



Colliers International

Nominated by: Wirt Design Group
Colliers International
EEI
Environmental Contracting Company
Levine/ Seegel Associates
Western Office



Confidential Biotech Company, Executive Suite

Nominated by: NBBJ
HDCCO
Limbach
Taft Electric



Confidential Financial Firm

Nominated by: Gensler
The Irvine Company
KGM Architectural Lighting
Seeley Brothers
TK1SC
Turelk



Critical Content

Nominated by: Wolcott Architecture | Interiors
AMA Consulting Engineers
Critical Content
JDM Contractors
Tangram
TSP Project Management



Design Studio

Nominated by: Gensler
Coffman Engineers, Inc.
Dempsey Construction
Glumac a Tetra Tech Company
OCS Lighting + Control
ReSource Floors, Inc



Fender Hollywood

Nominated by: Rapt Studio
Cresa Phoenix
Fender Musical Instruments
Howard Building Corporation



High Moon Studios

Nominated by: LPA
Ink Electric
Innovative Commercial Environments
Scantech Graphics
Tri Star
White Construction, Inc



KSGB

Nominated by: NxT studio
California Lighting Sales
Callahan Management
CBRE
JDM Contractors
Source Creative Office Interiors



LinkedIn

Nominated by: HOK
ARC Engineering
JLL
LinkedIn
Sierra Pacific Constructors
Structural Focus



Los Angeles Rams Corporate offices

Nominated by: HKS Architects Inc.
AMA Consulting Engineers
Kaplan Gehring McCaroll
RCI Builders
Veneklasen Associates
Western Office



NATIVO LOS ANGELES

Nominated by: Virtuoso Interior Design Studio
Crest Office Furniture Co. Inc.
Repp Design Group
Turelk



RDC-S111 Urban Office

Nominated by: Tierney Management
Oculus Light Studio
Pinnacle Construction
Pivot Interiors
Retail Design Collaborative



Savills Studley

Nominated by: LPA
Savills Studley
Solomon Fine Art
Systems Source
Tabor Company, Inc
Turelk



SOM Los Angeles Office

Nominated by: Skidmore, Owings & Merrill LLP
ARC Engineering
A SustainAble Production (A.S.A.P)
HLB Lighting Design
Newson Brown
Taslmi Construction



Supplyframe Headquarters

Nominated by: Cory Grosser + Associates
Mata Construction
Prudential Lighting
SG Engineers
Supplyframe



Terasaki Research Institute

Nominated by: Atelier Hitoshi Abe
Burohappold
House & Roberston Architects
Nous Engineering, Inc.
The Sheridan Group
Taslimi Construction



Time Inc.

Nominated by: HLW International LLP
AMA Consulting Engineers
JDM Contractors
Newson Brown Acoustics LLC
RSE Associates, Inc.
Systems Source



915 Wilshire

Nominated by: HLW International LLP
ARC Engineering
Oculus Light Studio
Western Office



1888 Century Park East Lobby Renovation

Nominated by: SAA interiors + architecture
Kaplan Gehring McCarroll Architectural Lighting
Phoenix Construction & Management
Light Build Design
Stark Carpet
Walker Zanger



Amare

Nominated by: IA Interior Architects
DBAC
Hines
Metropolitan West
Systems Source



Antares Capital

Nominated by: H. Hendy Associates
Antares Capital
El Segundo Fire Department
GM Interiors
JLC Associates, Inc.
Sphere Consulting



Aviron Pictures

Nominated by: Felderman Keatinge + Associates
ARC Engineering
Artcrafters
DFS Flooring
Interior Office Solutions
Taslmi Construction



The Bouqs Company

Nominated by: Wolcott Architecture | Interiors
ARC Engineering
Black LTD
Howard Building Corporation
Structural Focus
Tangram



Del Shaw Moonves Tanaka Finkelstein & Lezcano

Nominated by: NxT studio
California Lighting Sales
CBRE
Heilu, Inc.
JDM Contractors
Teknion



DPR Pasadena

Nominated by: LPA
CBI (Corporate Business Interiors)
DPR
Interior Office Solutions
Riboli Family Estates



HCVT

Nominated by: Ex Novo, Inc.
Corporate Contractors
CSI Fullmer
Donald F Dickerson and Associates
Holthouse, Carlin, Van Trigt, LLP



hyfn

Nominated by: OKB Architecture
360 CGI
hyfn
Newmark Knight Frank
Pinnacle Communication Services



Jenner & Block LLP

Nominated by: ONE design collective
Corporate Contractors
Jenner & Block LLP
Nabih Youssef Structural Engineers
TSP Project Management



Joe's Jeans

Nominated by: Gensler
AMA Consulting Engineers
Howard Building Corporation
Illuminate Lighting Design
JLL
Joe's Jeans



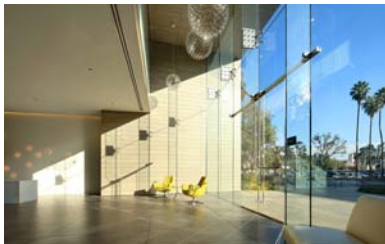
Knoll Inc.

Nominated by: Wirt Design Group
Architecture Research Office
Fanellipm
Glumac
Knoll, Inc.
Taslimi Construction



Microsoft Aliso Viejo

Nominated by: Abramson Teiger Architects
LFA Lighting



Pacific Center

Nominated by: HLW International LLP
Howard Building Corporation
KGM Architectural Lighting
Porcelanosa
The Sheridan Group
Structural Focus



That's It. Office Headquarters

Nominated by: Omgivning



Downtown Los Angeles Office

Nominated by: SAA interiors + architecture
CommonWealth Partners, LLC
Interior Office Solutions
KPRS Construction
Pinnacle Communication Solutions



Gamevil USA

Nominated by: NxT studio
California Lighting Sales
Cresa Corporate Real Estate
Heilu, Inc.
Vioski
Warner Constructors



Hudson Pacific Properties Hollywood Showroom

Nominated by: Kamus + Keller Interiors | Architecture
MDC Wallcoverings
Metropolitan West
Tri-West



JDM Contractors

Nominated by: IA Interior Architects
JDM Contractors
Jules Seltzer Associates
R2E ASSOCIATES | OFITA North America



USC Advancement

Nominated by: Ware Malcomb
JLL
Steelcase
University of Southern California
Warner Construction