



Tech Pack

Revised: February 2017

Tarrytown Music Hall
13 Main Street
Tarrytown, NY 10591
Box Office: 877-840-0457
Administrative Offices: 914-631-3390
Fax: 914-517-5927
E-mail: info@tarrytownmusichall.org
Website: www.tarrytownmusichall.org



CONTACT INFORMATION

Staff

Executive Director	Bjorn Olsson	914-631-3390 ext 101(w) 914-661-7222(c) bjorn@tarrytownmusichall.org
Theatre Manager	Karina Ringeisen	914-631-3390 ext 102(w) 914-320-3257(c) karina@tarrytownmusichall.org
Production Manager	Megan Corkrum	914-631-3390 ext 107(w) 215-380-5246(c) mcorkrum@tarrytownmusichall.org
Box Office (TicketForce)		877-840-0457
Fax		914-517-5927
General E-mail		info@tarrytownmusichall.org

Addresses

Physical:

The Tarrytown Music Hall
13 Main Street
Tarrytown, NY 10591

Mailing:

The Tarrytown Music Hall
c/o The Friends of the Mozartina
13 Main Street, PO Box 686
Tarrytown, NY 10591

Shipping & Mailing:

(Send contracts, insurance,
checks, flyers, posters,
merchandise here.)

The Tarrytown Music Hall
c/o The Friends of the Mozartina
43 Prospect Avenue
Tarrytown, NY 10591

THEATRE SPECIFICATIONS

Seating Capacity

Orchestra	473 seats
Balcony	370 seats
Total	843 seats

Stage Dimensions

Proscenium Width	32'
Proscenium Height	21.5'
Width including wings	63'
Depth	28'
Grid Height	35' (Batons can only fly to 32')

Orchestra Pit

The orchestra pit is located at orchestra level. Platforms can be removed to create a 9' x 28' wide and 8" deep area. A 2'6" high barrier separates the musicians from the audience.

Load-in

The 82" h x 62" w load in door is located at the back house left of the orchestra level off of Kaldenberg Street and is 3 steps above the street. A 14'-6" long x 2'-11" wide ramp is used to load in from the street level to the theater level. From there you proceed down the aisle of the orchestra to the stage ramp. Cases wider than 3' 2" will not fit down the aisle. The loading dock is for active unloading or loading only. The driver must be with the vehicle at all times. Trucks parked or standing idle at the loading dock will be ticketed or towed by authorities. **Due to an agreement between the Music Hall and the Tarrytown police department all trucks and buses with trailers can start unloading at 12pm.**

Stage

The stage floor is Masonite over sprung wooden deck, painted black, semi-gloss black (Benjamin Moore). **Please note: The stage has an approximately 3% rake from upstage to downstage.**

Fly system

The Music Hall has a hemp fly system that is counterweighted by sandbags. This system can only be used by Music Hall approved stage hands. **Any rigging or other elements that may need to fly must be pre-approved by technical staff.**

Soft goods

- (4) 20hx8'w Black Legs
- (3) 8'hx40'w Black Borders
- (2) 22'hx22'w Traveler Legs Located US on line 20 on a traveler track
- (2) 22'hx22'w Traveler Legs Located midstage on line 5 on a traveler track
- (2) 22'hx22'w Gold Main Curtain (**CANNOT BE REMOVED OR MOVED**)
- (1) 20'hx40' Muslin Cyclorama Located US on line 21

Dressing rooms

Lower Level

- (5) 4-5 person room with mirrors and lights with (2) restrooms

Upper Level

- (4) 3-4 Person rooms with mirrors and lights with (1) restroom
- (1) 2 stall shower room

Wardrobe

The Music Hall is not equipped with wardrobe equipment or laundry needs. You should plan to supply all wardrobe needs for your show. There is a Laundromat located across the street from the Music Hall.

- (1) iron & (1) ironing board located in shower room
- (1) garment rack

Crossovers

- (1) crossover area upstage under the last line set, only accessible if the cyc is **not** used.
- (1) crossover area underneath the stage.

LIGHTING

House Lighting

House lights are controlled from two locations: backstage and in the house. A dimmer back stage left controls the chandeliers and breaker switches control the rim, mural and proscenium lighting. In the house right stairwell, non dimming breakers control the lights under the balcony and decorative lighting.

Stage Lighting

The Music Hall has a full rep plot available for your production. There is a pipe plot and light plot attached. A version of our plots in both .pdf and / or vectorworks format is available upon request.

Power

400 amps 3 phase camlock tails downstage right for Lighting

100 amps 3 phase camlock tails downstage left for Sound

(6) 20amp single phase Edison receptacles SL

(6) 20amp single phase Edison receptacles SR

Dimmers

ETC 96 x 2.4kw dimmer rack

Control

MA Light

ETC Element (the Element is typically used as a playback wing for the MA Light)

Equipment

(19) Martin Mac Aura Led Wash

(4) Elation Platinum Spot 5R Pro

(12) ETC Source 4 19 degrees 575w

(14) ETC Source 4 26 degrees 575w

(28) ETC Source 4 36 degrees 575w

(4) ETC Source 4 50 degrees 575w

(2) Altman Satellite 575w follow spots

Accessories

(10) B-Size Template Holders

Ladders

(1) 40' fiberglass extension ladder

(1) 12' fiberglass A frame ladder

(1) 8' fiberglass A frame ladder

(1) 6' fiberglass A frame ladder

Effects

(1) Unique 2 Hazer (fluid additional fee)

MISCELLANEOUS

(1) 5'7"L x 3'3"W Tech Table

(4) Wenger Versalite 4' x 8' platforms with height adjustable legs (16" - 28") and black skirting

(45) Music Stands

(17) LED Brite lights for music stands

(3) Bass Stools

(6) 6' plastic catering tables

(3) 8' plastic catering tables

(1) Lectern

(1) 6.4 foot Steinway B Grand Piano for stage use only & for rent

(7) Wenger Series 64 Travelmaster Acoustical Shells for rent

(65) Black Concert Chairs for rent

Marley dance floor

SOUND

FOH position

The permanent position is located at the back of Orchestra Center, house left, under the balcony. The system runs on a 100 amp circuit.

Audio System Description

The Tarrytown Music Hall Sound System is comprised of two ground stacked line arrays (5x Meyer M2D per side), three stage level front fills DSR, DSC, DSL (Meyer M1D's) and one subwoofer per side (Meyer 700-HP). The bottom three boxes per side fill the orchestra, with two top box per side fill for the balcony seating. The arrays are sent from the Stereo A Left/Right of the console to the Galileo, subwoofers and front fills receive signal from the Stereo A and B output of the console to the Galileo. The system has been calibrated with SIM 3. There is a BSS Opal two 31 Band, 1/3 octave EQ in-line before the Galileo for the FOH engineer to tune the system for each show requirements, as well as another Ashly two 31 Band, 1/3 Octave EQ for the two downstage monitor wedges that are available. On stage, there are two plug box locations, one on the Down Stage Left, and the other on the Down Stage Right wall. Each box has 24 Female XLR inputs, and 6 Male XLR Return lines, with a XLR 4' fan-out at the Front of House mix position. There is also two 20 Amp receptacles on each side next to these plug boxes, as well as at FOH. Down stage left is the power tie-in location, a 100 Amp 3-phase disconnect with cam-lock connectors.

Audio System Components

Manufacturer Model Quantity Description

- (1) Midas Venice 320 32 Channel Mixing Console: 24 Mono/4 Stereo
- (1) Yamaha M7CL 48 Channel
- (1) Denon DN-620 CD/Tape Deck
- (2) BSS Opal 31 Band 1/3 Octave
- (1) Galileo Speaker Processor
- (2) Ashly 31 band 1/3 Octave EQ
- (10) Meyer Sound M2D Compact Curvilinear Array Loudspeaker
- (2) Meyer Sound 700-HP Ultra High-Power Subwoofer
- (2) Meyer Sound UM-1P Narrow Coverage Stage Monitor
- (2) Whirlwind 24 Channel/8 Returns: One SR, One SL from FOH
- (1) Yamaha SPX 2000 Effects Unit
- (1) Yamaha SPX90 Effects Unit
- (1) DMX 1066 Compressor
- (2) Countrymen Stereo DI
- (2) Wireless Handheld Beta 58

MEDIA

Screens

- (1) Fly-in perforated matte screen with 14' x 33'
- (1) Fly-in front/rear projection screen 9'x15'

Film projection system

- (2) Century SA projectors with dual-lens turrets; each has 4 lenses to fit all formats: 1.33, 1.66, 1.85 and Cinemascope; Strong Super Lume-X 2000-watt lamp houses and power supplies; Stereo sound head with LED exciter lamp
- (1) Dolby CP-50 analog sound processor
- (1) Sound panel with booth monitor and house volume
- (3) Power amps for left, right, and center
- (3) JBL 4670D twin-woofer speaker cabinets with large compression horns
- (1) Kelmar motorized rewind table
- (1) Neumade 35SS splicer and tape
- (6) Aluminum take-up reels

Digital projection system

Predominantly used for movies, not video or concert projections.

- (1) Digital Projection Inc. Power 7gv three-DLP projector: 6500-lumens; 1024x768 resolution; line-doubling for standard video; Component, VGA, and S-Video inputs; two zoom lenses allowing full screen illumination for all formats
- (1) Yamaha Blu-ray disc player
- (1) Toshiba progressive-scan DVD player
- (1) Mixer for sound sources with 3-band equalizer and announcement microphone

LOCAL INFORMATION

Emergency Numbers

Tarrytown Police Department: 914-631-5544 or **911**
Phelps Memorial Hospital: 914-366-3000
701 North Broadway (Rte 9)
Sleepy Hollow, NY

Airports (In order of proximity)

Westchester County Airport
LaGuardia
JFK
Newark

Banks / ATMs

JP Morgan Chase: 914-631-4344
64 North Broadway
Key Bank: 914-524-7826
75 North Broadway

Car Rentals (see also Car/Taxi Services)

Enterprise: 914-631-5474
Hertz: 914-948-1016
National: 914-946-9080
AVIS: 914-997-2300

Car / Taxi Services

United Taxi & Limo: 914-631-2920
Knapp McCarthy (local): 914-631-0031
Dominick's Limousine Service: 914-366-0929
Hospitality Limousine airport service: 914-591-5404
(Music Hall's Preferred Car Service)
hospitalitylimo@aol.com

Dry Cleaning / Tailoring

Johnny On The Spot Cleaners: 914-631-4548
350 South Broadway
Old Dutch Cleaners: 914-332-0033
9B South Broadway
Reali Tailoring & Dry Cleaning: 914-631-0424
51 Main Street
Van Tassel Cleaners: 914-631-7787
River Plaza Shopping Center (near RR station)

Flower Shops

Alma Snape: 914-631-0840
Dobbs Ferry
Tarrytown Florist: 914-332-0077
7B South Broadway

Gas Station

Shell Service Station: 914-631-9800
Hess Station
Both located at the corner of Rte 119 & Rte 9

Grocery Store

C-Town: 914-332-7400
114 North Broadway
Super Stop & Shop: 914-631-8566
610 White Plains Rd (Rt. 119)

Hardware

Goldberg Hardware: 914-631-1817
63 Main Street
Home Depot: 914-593-7110
1 Saw Mill River Road
Hawthorne, NY 10532

Laundromat

20 Main Street

Malls & Department Stores

Galleria Mall: 914-682-0111
100 Main Street, White Plains
Palisades Mall: 845-348-1000
1000 Palisades Center Drive, West Nyack
Sam's Club: 914-592-0023
Rte 9A, Elmsford
Westchester Mall: 914-683-8600
125 Westchester Avenue, White Plains

Office Supplies

Staples, The Office Store (10 minutes drive)
339 Tarrytown Road, Elmsford, NY
914-345-9401

Pharmacies

CVS
51 North Broadway
Store phone: 914-631-6330
Pharmacy Phone: 914-631-7266
Walgreens: 914-332-0502
134 Wildey Street

Post Offices

Tarrytown Post Office
50 North Broadway
Mon - Fri, 8am - 5pm
Sat, 9am - 1pm
Martine Station
170 Martine Avenue
White Plains, NY
Mon - Fri, 8:30am - 6pm
Sat, 9am - 3pm
White Plains Main Office
100 Fischer Avenue
White Plains, NY
Mon - Fri, 6am - 6pm
Sat, 6am - 5pm
Sun, 6am - noon

Printing & Poster Making

Staples, The Office Store (10 minutes drive):
339 Tarrytown Road, Elmsford, NY
914-345-9401

PARKING INSTRUCTIONS



When you are driving to the Music Hall if the Venue is on your right-hand side the next street on your right is Kaldenberg Place.



Turn **RIGHT** onto Kaldenberg Place, this is where our loading doors are located. A few feet after you turn onto Kaldenberg there are three stairs leading up to two double doors, these are the loading doors



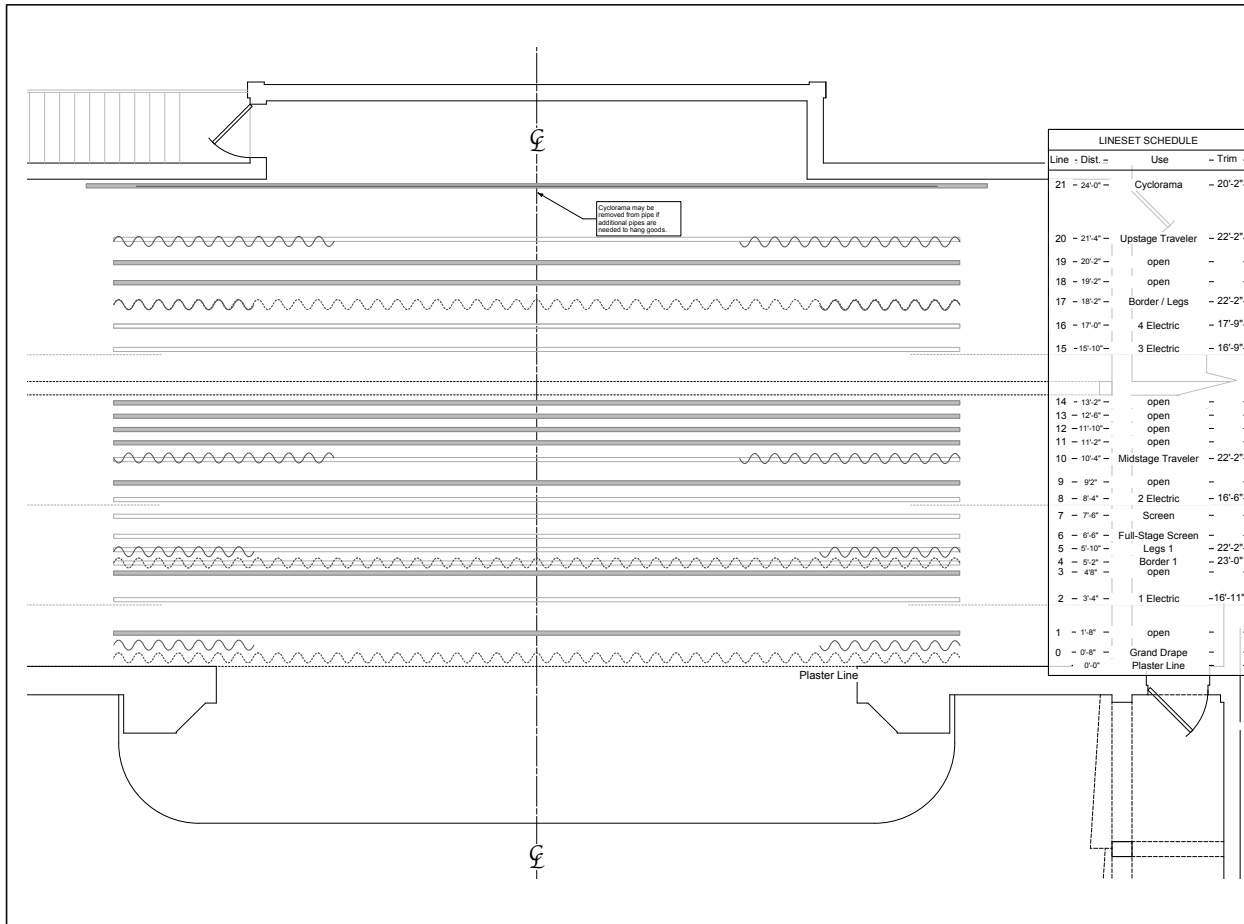
A half a block down the street is our parking lot. We are the **MEDIUM** lot next to the blue house **NOT** the driveway right next to the stage door!



Stage Door in relation to the Driveway we do not own.



From our load in doors to the stage.



Line	Dist.	Use	Trim
21	24'-0"	Cyclorama	20'-2"
20	21'-4"	Upstage Traveler	22'-2"
19	20'-2"	open	-
18	19'-2"	open	-
17	18'-2"	Border / Legs	22'-2"
16	17'-0"	4 Electric	17'-9"
15	15'-10"	3 Electric	16'-9"
14	13'-2"	open	-
13	12'-6"	open	-
12	11'-10"	open	-
11	11'-2"	open	-
10	10'-4"	Midstage Traveler	22'-2"
9	9'-2"	open	-
8	8'-4"	2 Electric	16'-6"
7	7'-6"	Screen	-
6	6'-6"	Full-Stage Screen	-
5	5'-10"	Legs 1	22'-2"
4	5'-2"	Border 1	23'-0"
3	4'-6"	open	-
2	3'-4"	1 Electric	16'-11"
1	1'-8"	open	-
0	0'-8"	Grand Drape	-
	0'-0"	Plaster Line	-

KEY

LEGEND

NOTES

MUSIC HALL HOUSE PAPERWORK

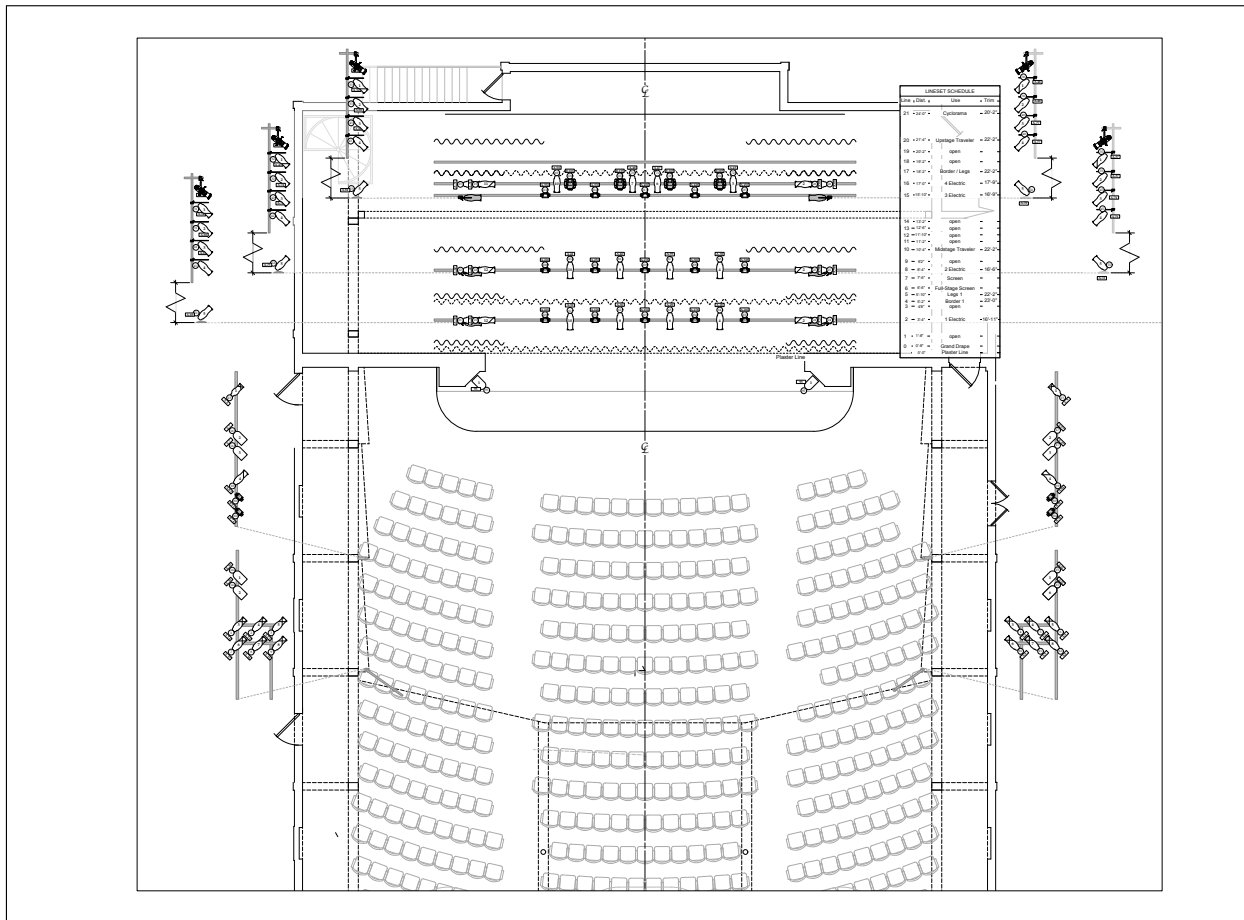
PROJECT LEADING DIRECTOR
TOM TRAYER
SHAWNEE THEATRE

PIPE PLOT
Scale: 1/2" = 1'-0"

VERSION TABLE

MUSIC HALL

PLAT NO. 3 OF 5



Line	Dist.	Use	Trim
21	24'-0"	Cyclorama	20'-2"
20	21'-4"	Upstage Traveler	22'-2"
19	20'-2"	open	-
18	19'-2"	open	-
17	18'-2"	Border / Legs	22'-2"
16	17'-0"	4 Electric	17'-9"
15	15'-10"	3 Electric	16'-9"
14	13'-2"	open	-
13	12'-6"	open	-
12	11'-10"	open	-
11	11'-2"	open	-
10	10'-4"	Midstage Traveler	22'-2"
9	9'-2"	open	-
8	8'-4"	2 Electric	16'-6"
7	7'-6"	Screen	-
6	6'-6"	Full-Stage Screen	-
5	5'-10"	Legs 1	22'-2"
4	5'-2"	Border 1	23'-0"
3	4'-6"	open	-
2	3'-4"	1 Electric	16'-11"
1	1'-8"	open	-
0	0'-8"	Grand Drape	-
	0'-0"	Plaster Line	-

KEY

LEGEND

NOTES

MUSIC HALL HOUSE PAPERWORK

PROJECT LEADING DIRECTOR
TOM TRAYER
SHAWNEE THEATRE

DIMMER PLOT
Scale: 1/4" = 1'-0"

VERSION TABLE

MUSIC HALL

PLAT NO. 4 OF 5