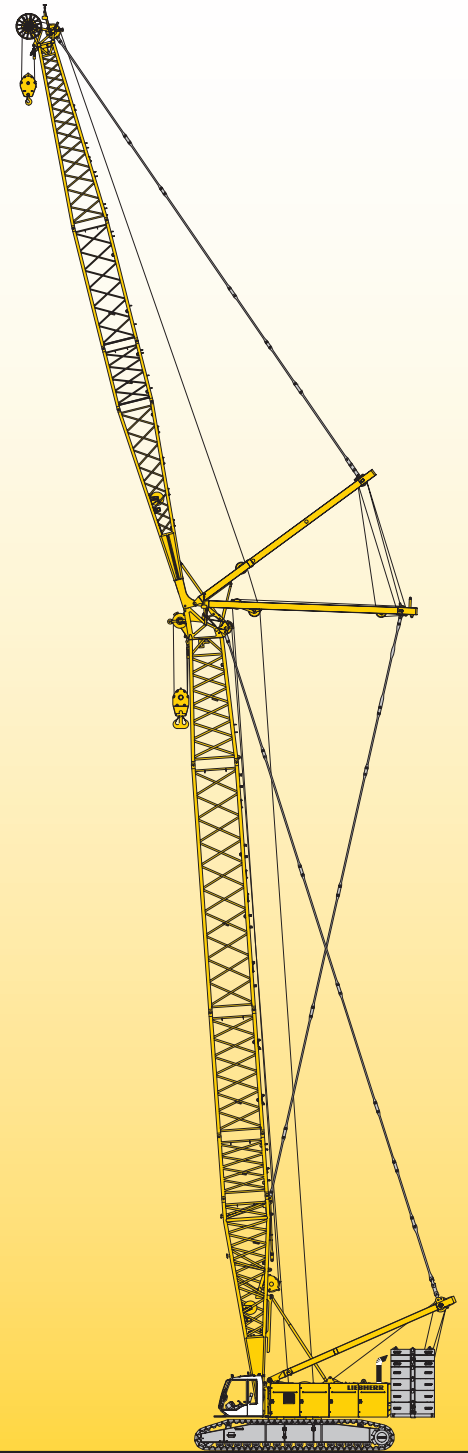


Technical data Hydraulic lift crane

LR 1300

Litronic®

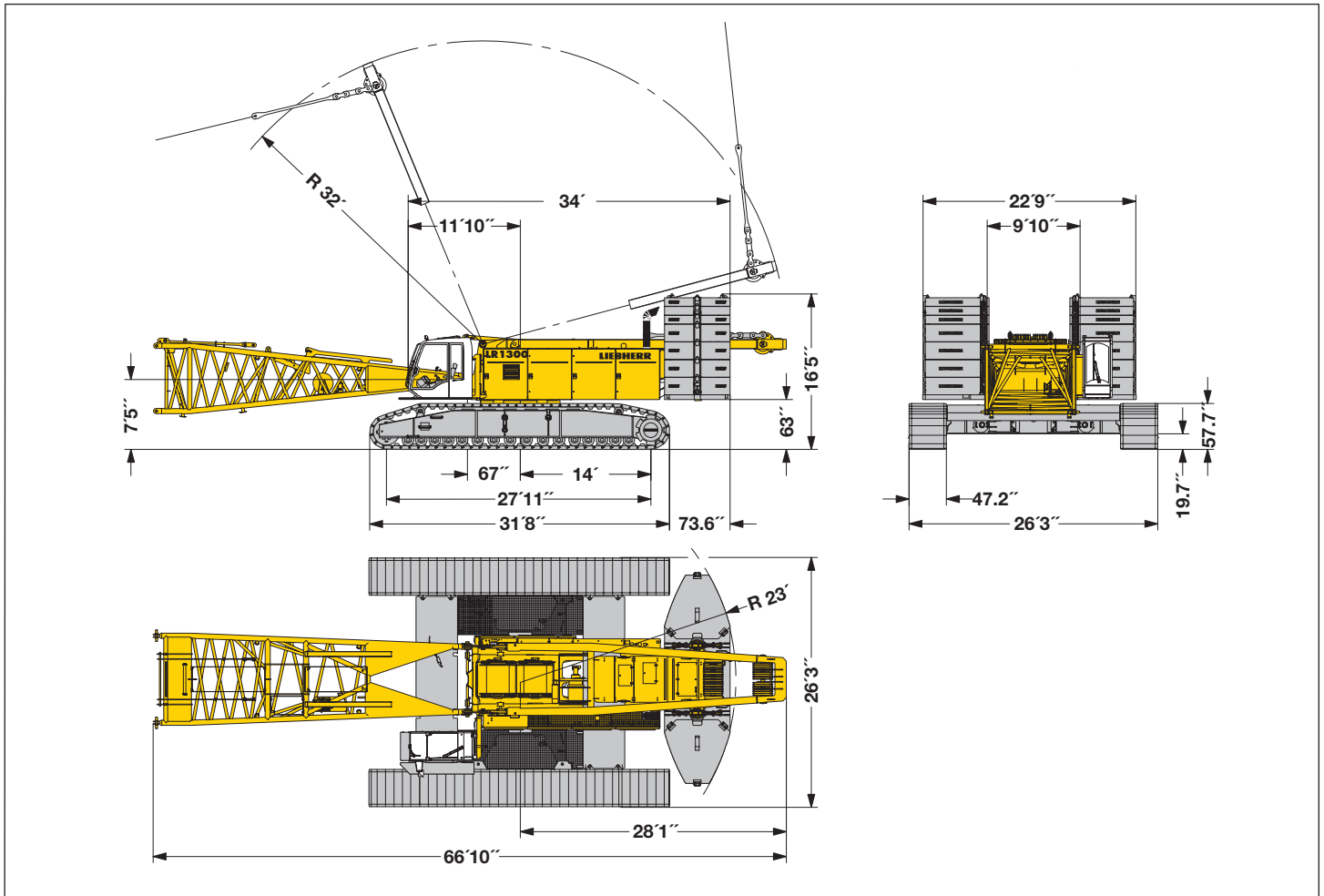
Complies with ANSI B 30.5



LIEBHERR

Dimensions

Basic machine with undercarriage



Operating weight

The operating weight includes the basic machine with crawlers, 2 main winches 33,100 lbs and 66 ft main boom, consisting of A-frame, boom foot (33 ft), boom head (23 ft), boom extension (10 ft), 273,400 lbs basic counterweight, 125,700 lbs carbody conterweight and 661,400 lbs hook block.

Total weight _____ approx. 639,400 lbs

Ground pressure

Ground bearing pressure _____ 20.6 psi

Equipment

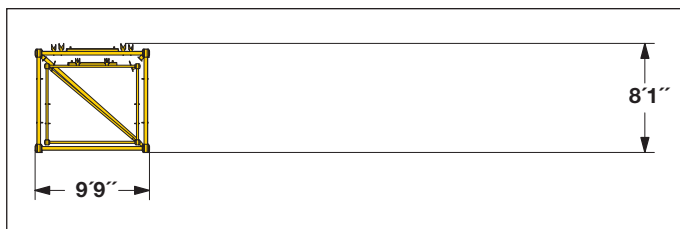
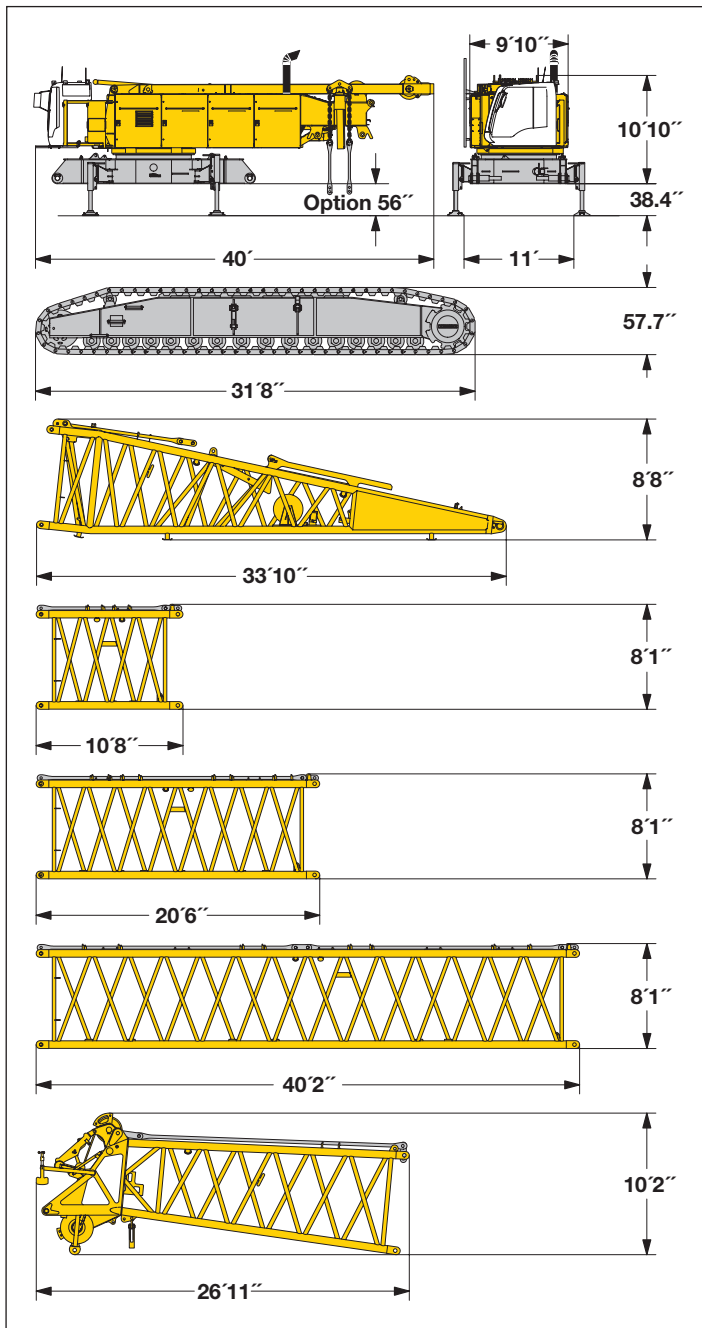
Main boom (No. 2821.xx) max. length _____ 322 ft
 High reach boom (No. 2821.xx and 2316.xx) _____ 404 ft
 Luffing jib (No. 2316.xx) max. length _____ 371 ft
 Max. combination _____ main boom 194 ft and luffing jib 371 ft
 Auxiliary jib _____ 79,400 lbs

Remarks

1. The lifting capacities stated are valid for lifting operation only (corresponding with crane classification according to F.E.M. 1.001 crane group A1).
2. Crane standing on firm, horizontal ground.
3. The weight of the lifting device (hoisting ropes, hook block, shackle etc.) must be deducted form the gross lifting capacity to obtain a net lifting value.
4. Additional equipment on boom (e.g. boom walkways, auxiliary jib) must be deducted to get the net lifting capacity.
5. For max. wind speed please refer to lift chart in operator's cab or manual.
6. Working radii are measured from center of swing and under load.
7. The lifting capacities are valid for 360 degrees of swing.
8. Calculation of stability under load is based on 75% tipping load, ANSI B 30.5 and ISO 4305 Table 2.
9. The structures are calculated according to F.E.M. 1.001 - 1998 (EN 13001-1; EN 13001-2).

Transport dimensions and weights

Basic machine and boom (No. 2821.xx)



→ Including pendants

Basic machine

with A-frame, 2x 33,100 lbs crane winches, without boom foot, hoisting ropes, basic counterweight and crawlers

| | |
|--------|------------|
| Width | 9'10" |
| Weight | 92,160 lbs |

Crawler

| | |
|------------------|------------|
| Flat track shoes | 47.2" |
| Width | 55.1" |
| Weight | 49,300 lbs |

Boom foot (No. 2821.30)

| | |
|-----------------------------|------------|
| Width | 9'9" |
| Weight without winch | 12,700 lbs |
| Weight incl. winch and rope | 16,350 lbs |

Boom section (No. 2821.24) 10 ft

| | |
|---------|-----------|
| Width | 9'9" |
| Weight* | 2,650 lbs |

Boom section (No. 2821.24) 20 ft

| | |
|---------|-----------|
| Width | 9'9" |
| Weight* | 4,200 lbs |

Boom section (No. 2821.24) 40 ft

| | |
|---------|-----------|
| Width | 9'9" |
| Weight* | 7,390 lbs |

Boom head (No. 2821.24)

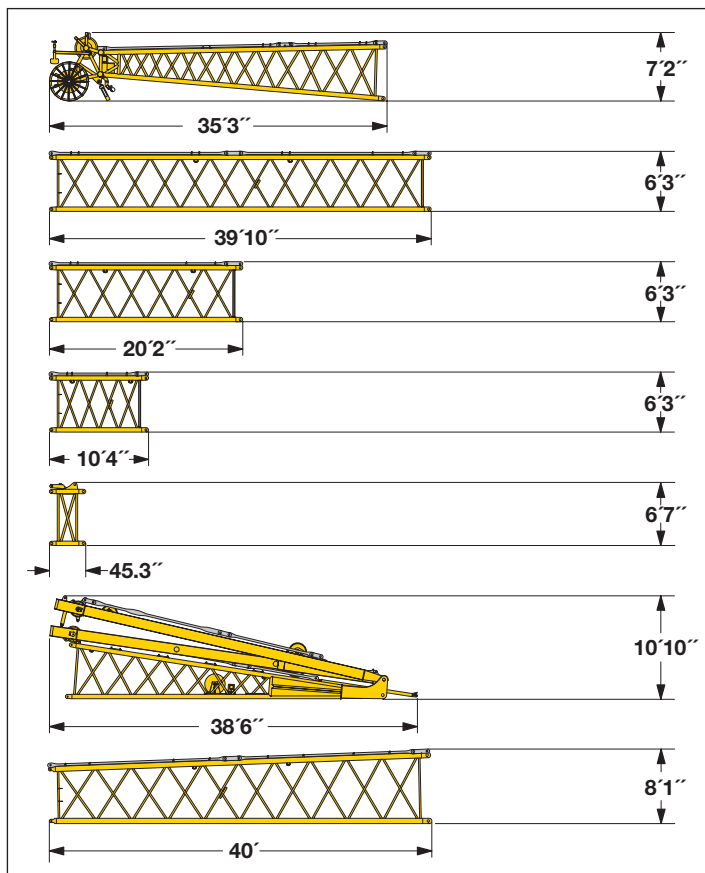
| | |
|---------|------------|
| Width | 9'9" |
| Weight* | 11,900 lbs |

Boom - luffing jib transport option

| | | | |
|---------------------|--------|-------|-----------|
| No. 2821.xx/2316.xx | 40/40 | 20/20 | 30/30 ft |
| Length | 41' | 20'6" | 10'8" |
| Weight* | 11,360 | 6,285 | 3,990 lbs |

Transport dimensions and weights

Luffing jib (No. 2316.xx)



Luffing jib head (No. 2316.20)

| | |
|---------|-----------|
| Width | 8' |
| Weight* | 5,070 lbs |

Luffing jib section (No. 2316.20) **40 ft**

| | |
|---------|-----------|
| Width | 8' |
| Weight* | 3,970 lbs |

Luffing jib section (No. 2316.20) **20 ft**

| | |
|---------|-----------|
| Width | 8' mm |
| Weight* | 2,100 lbs |

Luffing jib section (No. 2316.20) **10 ft**

| | |
|---------|-----------|
| Width | 8' |
| Weight* | 1,350 lbs |

L-boom jib section (No. 2316.20) **39.4 inch**

| | |
|---------|-----------|
| Width | 8' |
| Weight* | 1,410 lbs |

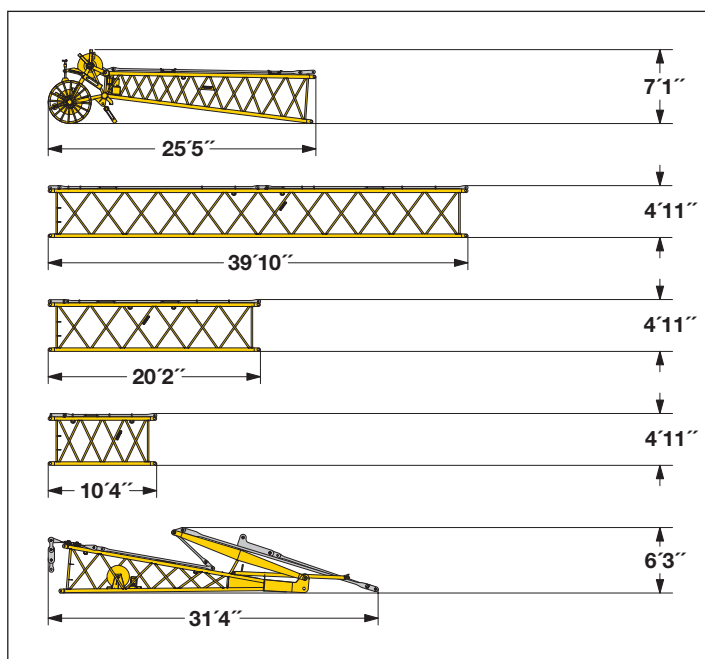
Luffing jib foot with A-frames (No. 2316.22)

| | |
|---------|------------|
| Width | 8'9" |
| Weight* | 17,450 lbs |

L-boom sect. tapered (No. 2821/2316.24) **40 ft**

| | |
|---------|-----------|
| Width | 9'9" mm |
| Weight* | 5,950 lbs |

Fixed jib (No. 1713.xx)



Fixed jib head (No. 1713.21)

| | |
|---------|-----------|
| Width | 6' |
| Weight* | 3,030 lbs |

Luffing jib section (No. 1713.18) **40 ft**

| | |
|---------|-----------|
| Width | 6' |
| Weight* | 2,520 lbs |

Luffing jib section (No. 1713.18) **20 ft**

| | |
|---------|-----------|
| Width | 6' |
| Weight* | 1,400 lbs |

Luffing jib section (No. 1713.18) **10 ft**

| | |
|---------|---------|
| Width | 6' |
| Weight* | 930 lbs |

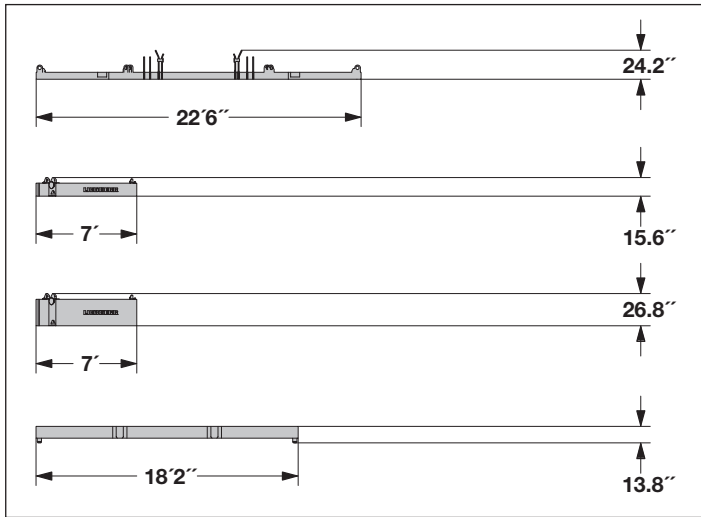
Fixed jib foot with A-frame (No. 1713.22)

| | |
|---------|-----------|
| Width | 8' |
| Weight* | 5,070 lbs |

*) Including pendants

Transport dimensions and weights

Counterweights



Counterweight **1x**

| | |
|--------|------------|
| Width | 6'11" |
| Weight | 32,000 lbs |

Counterweight **6x**

| | |
|--------|------------|
| Width | 6'11" |
| Weight | 11,050 lbs |

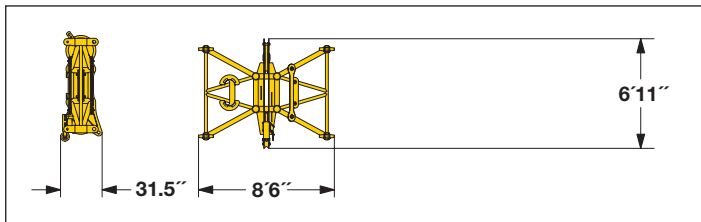
Counterweight **8x**

| | |
|--------|------------|
| Width | 6'11" |
| Weight | 22,050 lbs |

Carbody counterweight **4x**

| | |
|--------|------------|
| Width | 5' |
| Weight | 31,420 lbs |

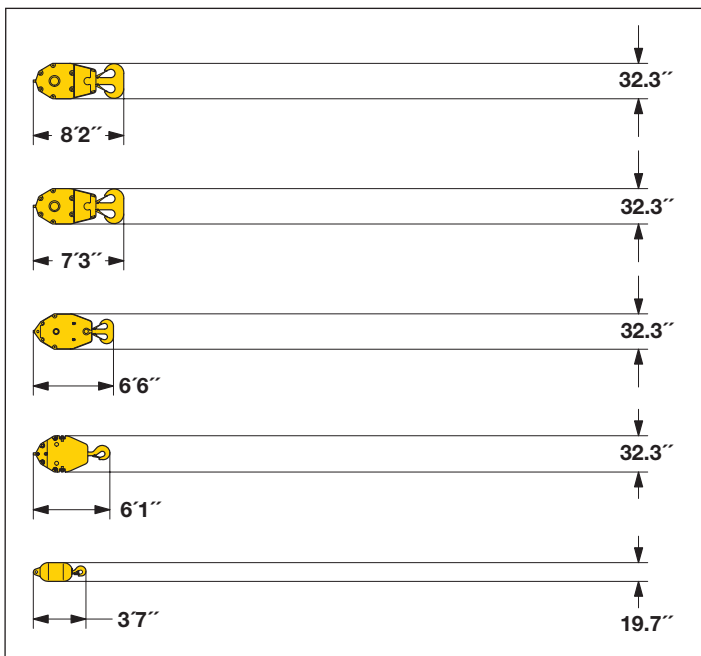
Mid fall (optional)



Mid fall section (No. 2316.25) **1.64 ft**

| | |
|--------|-----------|
| Width | 8' |
| Weight | 1,550 lbs |

Hooks



661,400 lbs hook block - 11 sheaves

| | | |
|--------|-------|------------|
| Width | 34.6" | 48.4" |
| Weight | 7,050 | 12,130 lbs |

330,700 lbs hook block - 5 sheaves

| | | | |
|--------|-------|-------|-----------|
| Width | 19.7" | 26" | 32.3" |
| Weight | 3,500 | 6,200 | 8,800 lbs |

220,500 lbs hook block - 3 sheaves

| | | | |
|--------|-------|-------|-----------|
| Width | 13.4" | 19" | 24.4" |
| Weight | 2,400 | 4,500 | 6,600 lbs |

110,200 lbs hook block - 1 sheave

| | | | |
|--------|-------|-------|-----------|
| Width | 11" | 16.1" | 21.3" |
| Weight | 1,800 | 3,500 | 5,300 lbs |

35,300 lbs single hook

| | |
|--------|-----------|
| Width | 19.7" |
| Weight | 2,000 lbs |

Technical description



Engine

Power rating according to ISO 9249, 450 kW (603 hp) at 1900 rpm
Engine type ————— Liebherr D 9508 A7
Fuel tank ————— 238 gal capacity with continuous level indicator and reserve warning
Engine complies with NRM exhaust certification EPA / CARB Tier 3 and 97/68 EC Stage III.



Hydraulic system

An axial displacement pump supplies the open loop hydraulic system for boom luffing, jib luffing and travel. The main hoist winches and swing are operated in a closed loop system. All functions can be operated simultaneously. To minimize peak pressure an automatic working pressure cut-off has been installed. All filters are electronically monitored.

The use of synthetic environmentally friendly (biodegradable) oils is possible.

Working pressure ————— max. 5076 psi
Oil tank capacity ————— 238 gal



Luffing jib winch

Line pull ————— max. 23,150 lbs
Rope diameter ————— 20 mm
Jib luffing ————— 69 sec. from 15° to 78°



Boom winch

Line pull ————— max. 48,000 lbs
Rope diameter ————— 24 mm
Boom up ————— 127 sec. from 15° to 86°



Swing

Consists of rollerbearing with external teeth, swing drive with fixed axial piston hydraulic motor, spring loaded and hydraulically released multi-disc holding brake, planetary gearbox and pinion.

Both swing modes are possible – speed control or free swing.
A multi-disc holding brake acts automatically at zero swing motion.
Swing speed from 0 – 1.8 rpm continuously variable.



Main winches

Line pull (1st layer) ————— max. 47,400 lbs
Line pull (7th layer) ————— 33,100 lbs
Rope diameter ————— 28 mm
Drum diameter ————— 28.7 inch
Rope speed ————— 0 – 453 ft/min
Rope capacity in 7 layers ————— 1,870 ft

The winches are outstanding in their compact design and easy assembly.

Propulsion is via a planetary gearbox in an oil bath.

Load support by the hydraulic system; additional safety factor provided by a spring loaded, multi-disc holding brake.

The main winches use pressure controlled, variable flow hydraulic motors.

This system features sensors that automatically adjust oil flow to provide max. winch speed depending on load.

Option – winch with freefall system:

Clutch and braking functions on the freefall system are provided by a compact designed, low wear and maintenance free multi-disc brake.



Crawlers

Propulsion through axial piston motor, hydraulically released spring loaded multi-disc brake, crawler tracks, hydraulic chain tensioning device.

Flat track shoes ————— 47.2 inch
Drive speed ————— 0 – 0.8 mph



Control

The control system – developed and manufactured by Liebherr – is designed to withstand extreme environmental conditions such as temperature, vibration and electromagnetic interference and to meet all requirements that are needed in heavy duty crane operation. Complete machine operating data are shown on a high resolution display.

Standard operational information is displayed by means of graphical symbols, fault indications are displayed in plain text (more than 15 languages available).

The cranes are equipped with proportional control for all main movements, which can be carried out simultaneously.

The crane is operated with 2 multi-directional joysticks, the right for winch I and boom, the left for winch II and swing control.

Option:

Bi-directional double T-levers for simultaneous boom and luffing jib operation.

The crawlers are activated by the two foot pedals. Additionally, hand levers can be attached to the pedals.

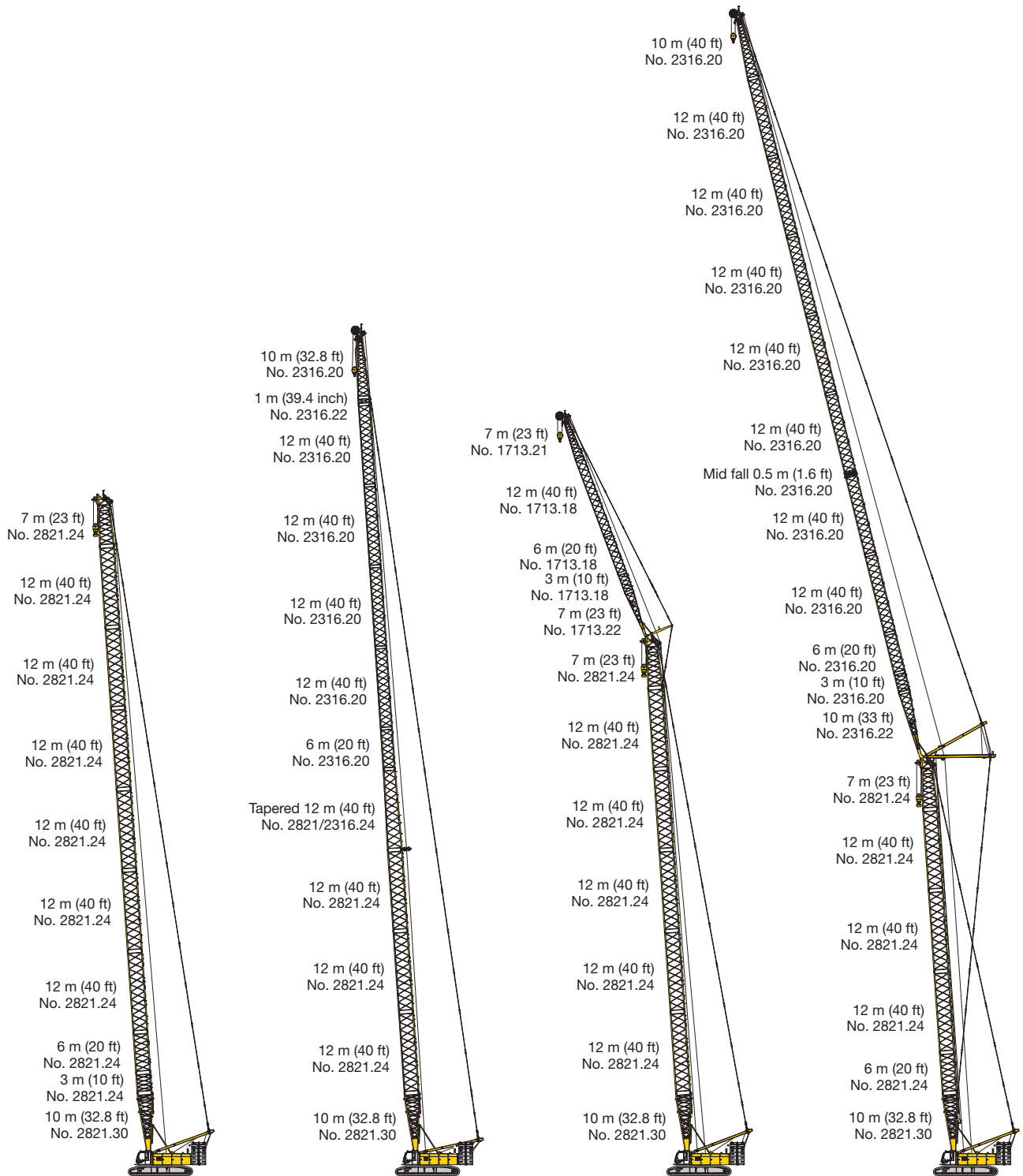
Remote control for assembly of counterweight and boom hinge pins.



Noise emission

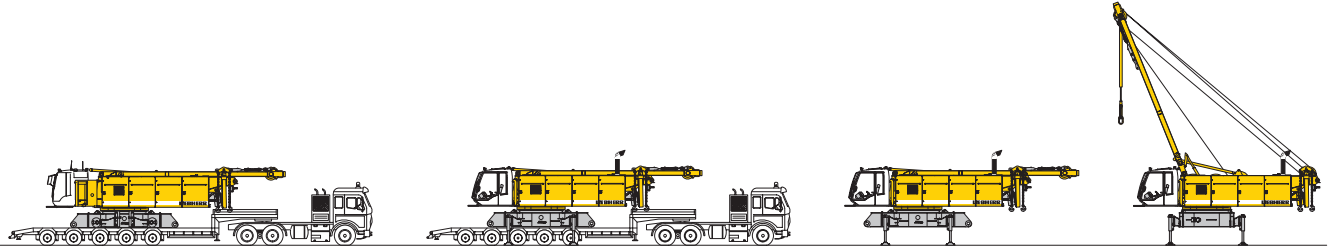
Noise emissions correspond with 2000/14/EC directive on noise emission by equipment used outdoors.

Boom combinations

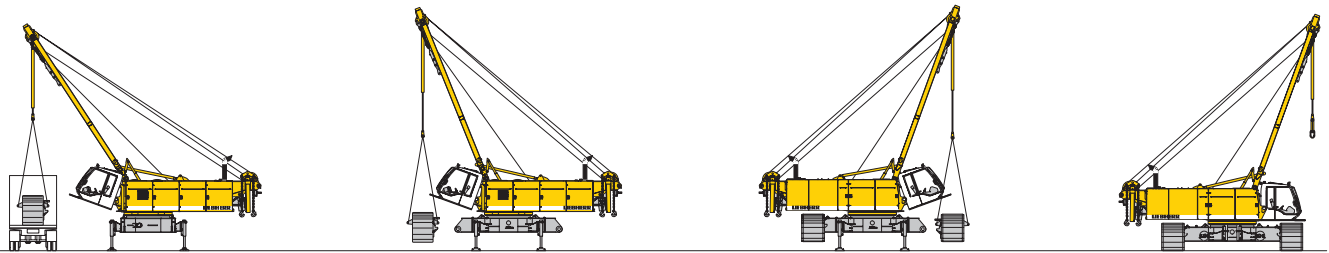


| | | | |
|-------------------------------|---------------------------------|--------------------------------|----------------------------------|
| Main boom No.2821.xx — 322 ft | Max. combination — 404 ft | Max. combination — 368 ft | Max. combination — 565 ft |
| | Main boom No.2321.xx — 151 ft | Main boom No. 2821.xx — 253 ft | Main boom No. 2821.xx — 194 ft |
| | Tapered No.2321/2316.xx — 40 ft | Fixed jib No. 1713.xx — 115 ft | Luffing jib No. 2316.xx — 371 ft |
| | Luffing jib No.2316.xx — 213 ft | | Main boom No. 2821.xx — 203 ft |
| | | | Luffing jib No. 2316.xx — 322 ft |

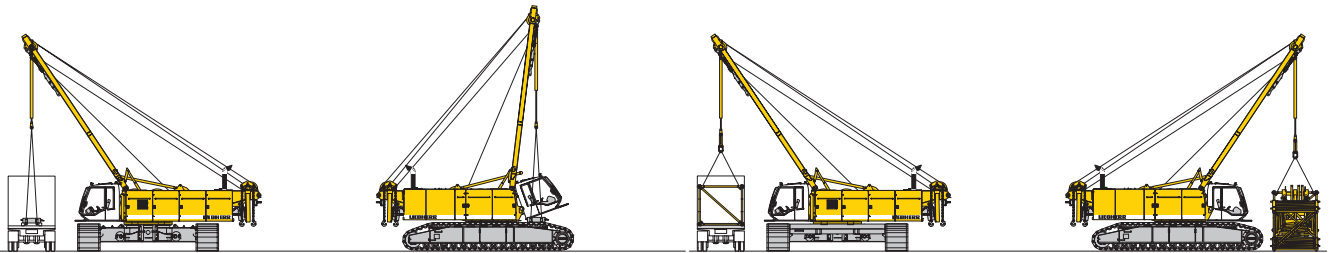
Self assembly system



Unloading of basic machine

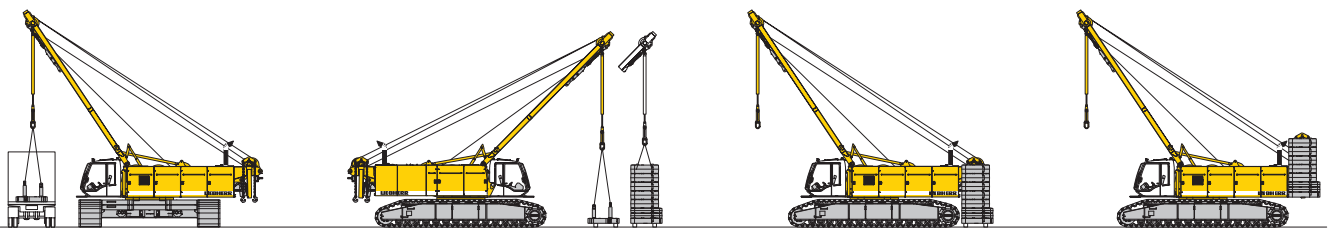


Unloading and assembly of crawlers

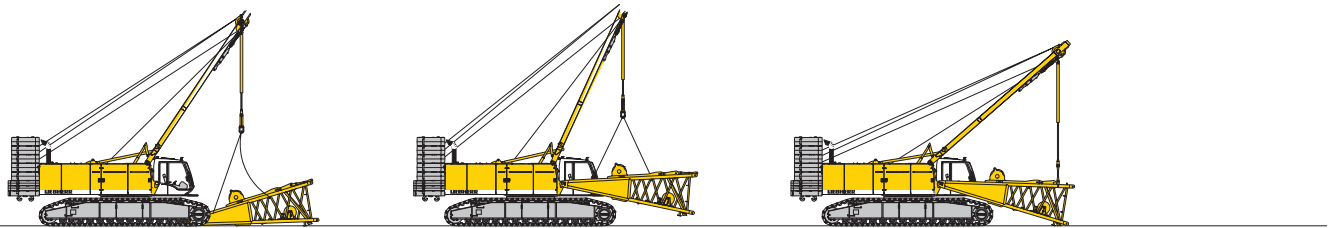


Unloading and assembly of carbody counterweight

Unloading and assembly of boom

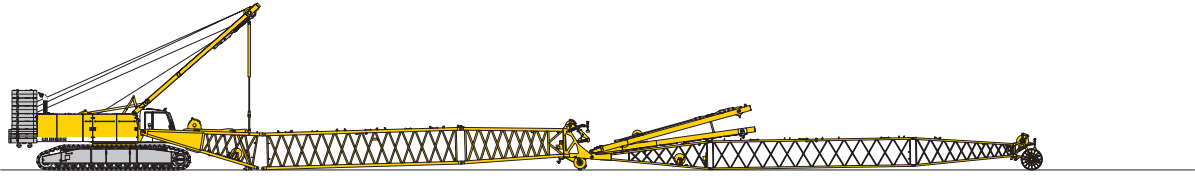


Unloading and assembly of counterweight

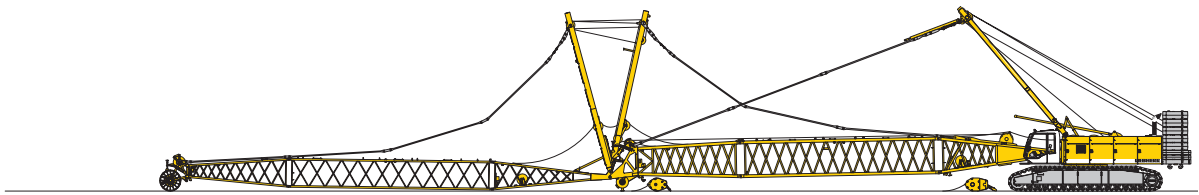


Unloading and assembly of boom foot

Erecting of main boom to working position



Assembly of boom



Reeving of hoist and luffing jib ropes

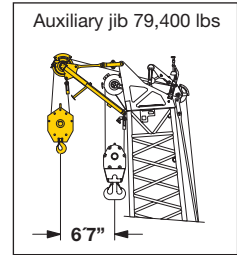
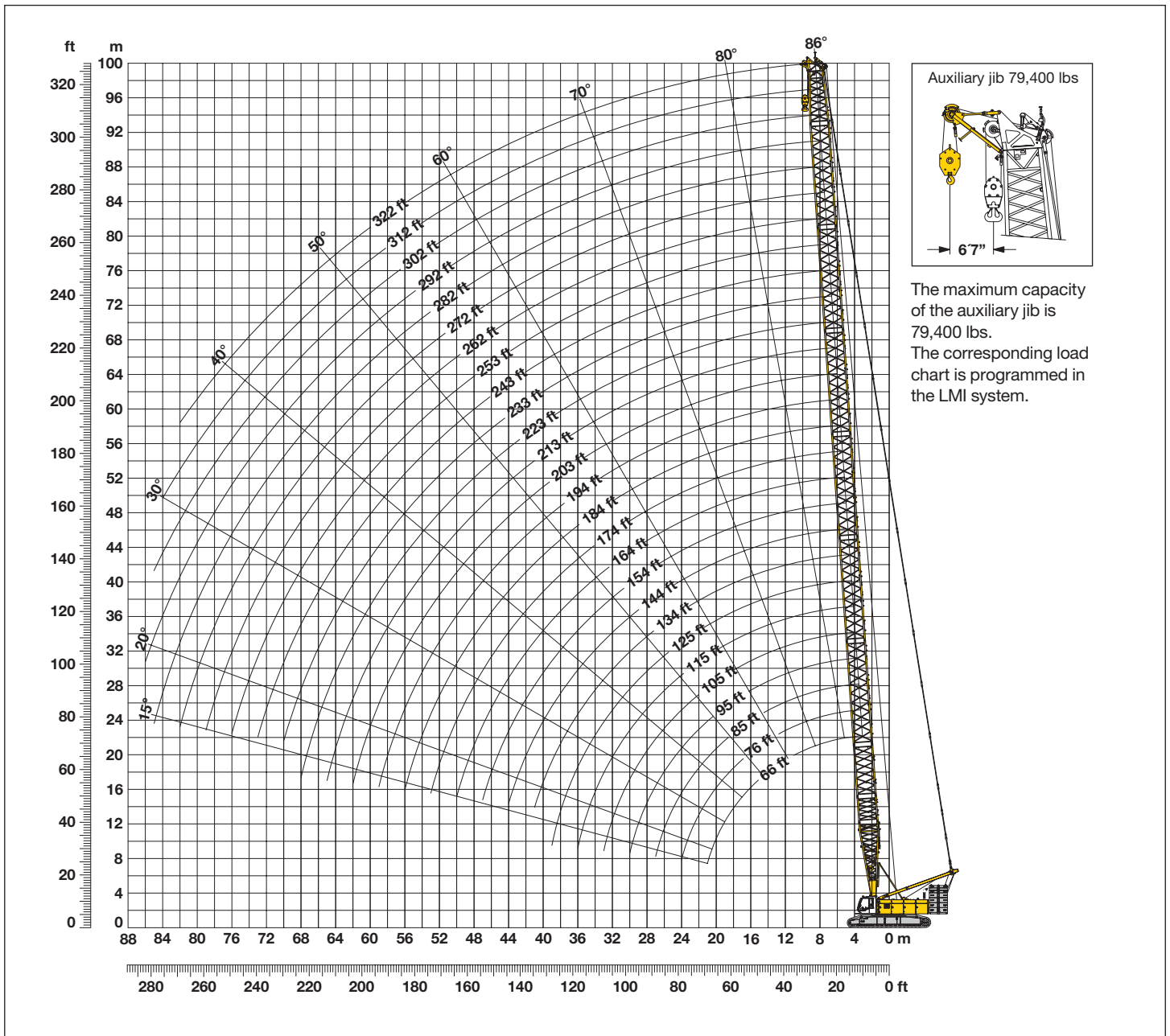


Erecting of main boom and luffing jib

Working position

Main boom (No. 2821.xx) 86° - 15°

273,400 lbs counterweight and 125,700 lbs carbody counterweight



The maximum capacity of the auxiliary jib is 79,400 lbs. The corresponding load chart is programmed in the LMI system.

Main boom configuration (Table 1 – No. 2821.xx)

Configuration for boom lengths between 66 ft and 322 ft

| Boom foot | Length* | Amount of boom extensions | | | | | | | | | | | | | | | | | | | | | | | | | | |
|------------------|---------|---------------------------|----|----|----|-----|-----|-----|-----|-----|-----|-----|-----|-----|-----|-----|-----|-----|-----|-----|-----|-----|-----|-----|-----|-----|-----|-----|
| | | 1 | 1 | 1 | 1 | 1 | 1 | 1 | 1 | 1 | 1 | 1 | 1 | 1 | 1 | 1 | 1 | 1 | 1 | 1 | 1 | 1 | 1 | 1 | 1 | | | |
| 32.8 ft | 32.8 ft | 1 | 1 | 1 | 1 | 1 | 1 | 1 | 1 | 1 | 1 | 1 | 1 | 1 | 1 | 1 | 1 | 1 | 1 | 1 | 1 | 1 | 1 | 1 | 1 | | | |
| 10 ft | 10 ft | 1 | | 1 | | 1 | | 1 | | 1 | | 1 | | 1 | | 1 | | 1 | | 1 | | 1 | | 1 | | | | |
| 20 ft | 20 ft | | 1 | 1 | | 1 | 1 | | 1 | 1 | | 1 | 1 | | 1 | 1 | | 1 | 1 | | 1 | 1 | | 1 | 1 | | | |
| 40 ft | 40 ft | | | | 1 | 1 | 1 | 1 | 2 | 2 | 2 | 2 | 3 | 3 | 3 | 3 | 4 | 4 | 4 | 4 | 5 | 5 | 5 | 5 | 6 | 6 | 6 | 6 |
| 23 ft | 23 ft | 1 | 1 | 1 | 1 | 1 | 1 | 1 | 1 | 1 | 1 | 1 | 1 | 1 | 1 | 1 | 1 | 1 | 1 | 1 | 1 | 1 | 1 | 1 | 1 | 1 | 1 | |
| Boom length (ft) | | 66 | 76 | 85 | 95 | 105 | 115 | 125 | 134 | 144 | 154 | 164 | 174 | 184 | 194 | 203 | 213 | 223 | 233 | 243 | 253 | 262 | 272 | 282 | 292 | 302 | 312 | 322 |

*Actual lengths of boom sectors are metric (e.g. 3m, 6m, 7m, 12 m). The figures shown above are approximate conversions to feet.

Lift chart for main boom (No. 2821.xx)

229,300 lbs counterweight and 125,700 lbs carbody counterweight

| Radius | Boom length in (ft) | | | | | | | | | | | | | | | Radius | |
|--------|---------------------|-------|-------|-------|-------|-------|-------|-------|-------|-------|-------|-------|-------|-------|-------|--------|------|
| | 66 | 76 | 85 | 105 | 125 | 144 | 164 | 184 | 203 | 223 | 243 | 262 | 282 | 302 | 312 | | |
| (ft) | lbs | lbs | lbs | lbs | lbs | lbs | lbs | lbs | lbs | lbs | lbs | lbs | lbs | lbs | lbs | lbs | (ft) |
| 15 | 603,2 | 661,4 | | | | | | | | | | | | | | | 15 |
| 20 | 574,2 | 578,9 | 578,1 | 577,4 | 570,6 | 526,6 | | | | | | | | | | | 20 |
| 25 | 459,4 | 459,3 | 458,5 | 457,8 | 456,4 | 455,4 | 446,9 | 419,7 | 363,6 | | | | | | | | 25 |
| 30 | 379,5 | 379,4 | 378,7 | 378,0 | 376,6 | 375,6 | 374,0 | 368,6 | 344,3 | 311,2 | 273,2 | 239,9 | 205,3 | | | | 30 |
| 35 | 322,4 | 322,4 | 321,6 | 321,0 | 319,6 | 318,5 | 317,0 | 315,7 | 314,1 | 296,3 | 261,0 | 237,6 | 204,8 | 177,3 | 165,4 | | 35 |
| 40 | 274,2 | 274,7 | 274,7 | 274,9 | 274,7 | 274,4 | 274,0 | 272,9 | 267,4 | 261,1 | 250,9 | 234,0 | 202,9 | 176,4 | 164,2 | | 40 |
| 50 | 198,7 | 199,2 | 199,1 | 199,2 | 198,8 | 198,5 | 197,9 | 197,3 | 196,7 | 196,0 | 192,5 | 188,1 | 183,6 | 170,4 | 160,1 | | 50 |
| 60 | 154,2 | 154,8 | 154,7 | 154,8 | 154,3 | 153,9 | 153,2 | 152,5 | 151,8 | 151,1 | 150,3 | 149,3 | 145,7 | 142,2 | 140,3 | | 60 |
| 65 | 138,0 | 138,7 | 138,7 | 138,8 | 138,3 | 137,8 | 137,1 | 136,4 | 135,6 | 134,9 | 134,0 | 133,3 | 131,4 | 128,2 | 126,5 | | 65 |
| 75 | | 114,0 | 114,2 | 114,4 | 113,8 | 113,3 | 112,5 | 111,9 | 111,0 | 110,2 | 109,3 | 108,5 | 107,5 | 106,0 | 104,6 | | 75 |
| 85 | | | 96,1 | 96,5 | 96,0 | 95,5 | 94,7 | 94,0 | 93,0 | 92,2 | 91,3 | 90,4 | 89,4 | 88,5 | 88,0 | | 85 |
| 105 | | | | 33,4 | 71,6 | 71,2 | 70,4 | 69,6 | 68,7 | 67,8 | 66,8 | 65,9 | 64,9 | 63,9 | 63,4 | | 105 |
| 125 | | | | | 33,4 | 55,3 | 54,6 | 53,8 | 52,8 | 52,0 | 51,0 | 50,0 | 49,0 | 48,0 | 47,5 | | 125 |
| 140 | | | | | | 46,6 | 45,9 | 45,2 | 44,2 | 43,3 | 42,3 | 41,3 | 40,3 | 39,3 | 38,8 | | 140 |
| 160 | | | | | | | 36,9 | 36,3 | 35,3 | 34,5 | 33,4 | 32,7 | 31,6 | 30,6 | 30,1 | | 160 |
| 180 | | | | | | | | 29,5 | 28,7 | 27,8 | 26,8 | 25,9 | 24,8 | 23,8 | 23,2 | | 180 |
| 200 | | | | | | | | | 23,2 | 22,4 | 21,4 | 20,5 | 19,4 | 18,4 | 17,9 | | 200 |
| 220 | | | | | | | | | | 17,9 | 17,0 | 16,1 | 15,0 | 14,0 | 13,5 | | 220 |
| 235 | | | | | | | | | | | 14,2 | 13,3 | 12,2 | 11,3 | 10,7 | | 235 |
| 255 | | | | | | | | | | | | 10,0 | 9,0 | 8,1 | 7,6 | | 255 |
| 275 | | | | | | | | | | | | | 6,2 | 5,3 | 4,8 | | 275 |
| 280 | | | | | | | | | | | | | | 4,7 | 4,2 | | 280 |
| 295 | | | | | | | | | | | | | | 2,9 | 2,4 | | 295 |

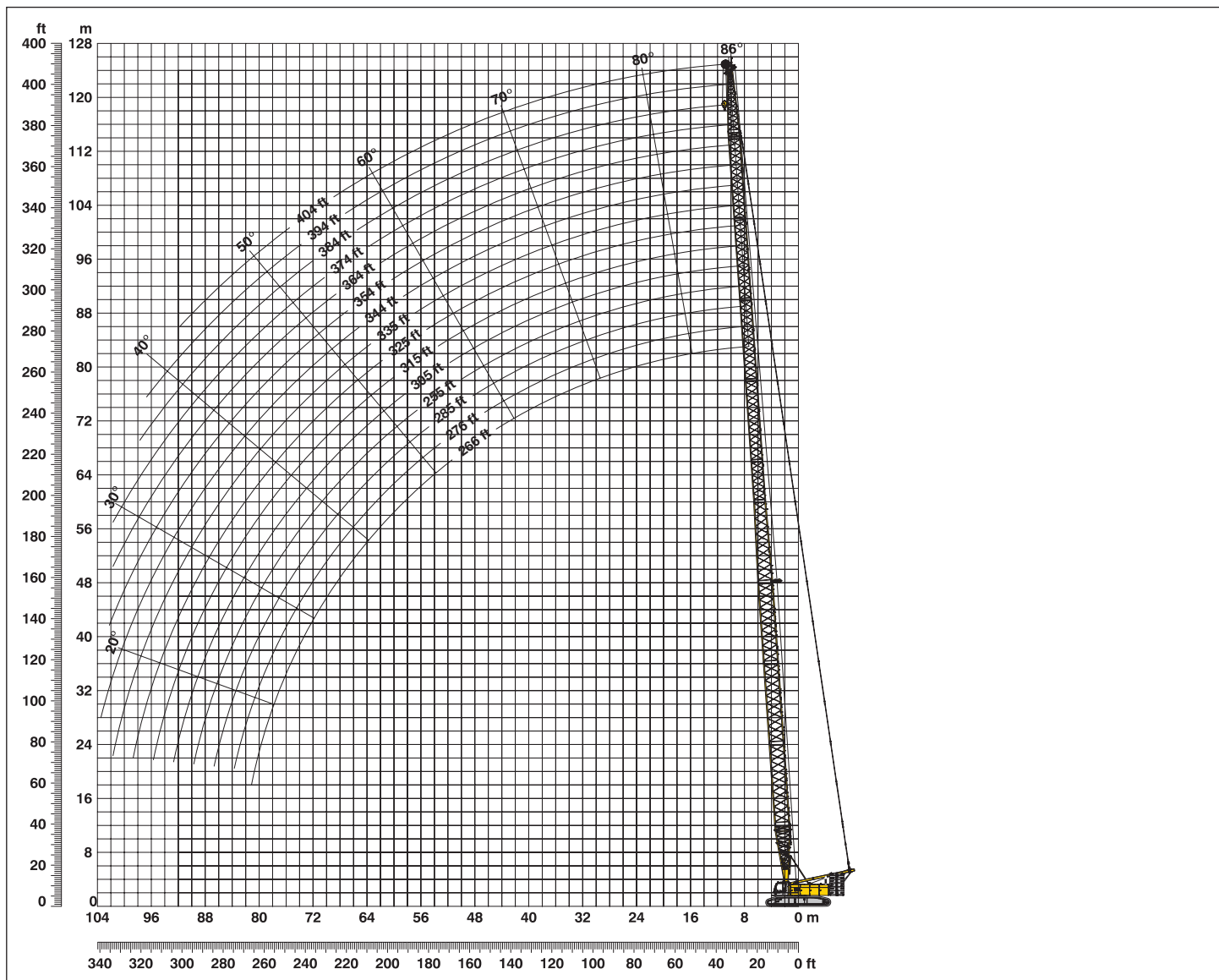
Lift chart for main boom (No. 2821.xx)

273,400 lbs counterweight and 125,700 lbs carbody counterweight

| Radius | Boom length in (ft) | | | | | | | | | | | | | | | Radius | |
|--------|---------------------|-------|-------|-------|-------|-------|-------|-------|-------|-------|-------|-------|-------|-------|-------|--------|------|
| | 66 | 75 | 85 | 105 | 125 | 144 | 164 | 184 | 203 | 223 | 243 | 262 | 282 | 302 | 322 | | |
| (ft) | lbs | lbs | lbs | lbs | lbs | lbs | lbs | lbs | lbs | lbs | lbs | lbs | lbs | lbs | lbs | lbs | (ft) |
| 22,3 | | | | | | | | | | | | | | | | | 22,3 |
| 25 | | | | | | | | 419,7 | | | | | | | | | 25 |
| 30 | | | | | | | 446,9 | 419,7 | 363,6 | | | | | | | | 30 |
| 35 | | | | | 391,0 | 386,3 | 382,5 | 368,6 | 344,3 | 311,2 | 273,2 | 239,9 | 205,3 | | | | 35 |
| 40 | 301,0 | 301,1 | 300,4 | 299,8 | 296,5 | 294,2 | 290,8 | 283,7 | 278,6 | 272,2 | 250,9 | 234,0 | 202,9 | 176,4 | 154,6 | | 40 |
| 45 | 260,9 | 261,4 | 261,3 | 261,5 | 261,1 | 260,1 | 257,5 | 254,8 | 247,7 | 241,1 | 226,5 | 221,9 | 201,1 | 175,5 | 153,1 | | 45 |
| 50 | 224,9 | 225,3 | 225,3 | 225,4 | 225,0 | 224,6 | 224,0 | 223,5 | 222,8 | 217,4 | 206,5 | 202,5 | 186,8 | 170,4 | 152,0 | | 50 |
| 60 | 174,9 | 175,5 | 175,4 | 175,6 | 175,0 | 174,6 | 173,9 | 173,3 | 172,5 | 171,8 | 171,0 | 170,2 | 165,0 | 153,6 | 140,7 | | 60 |
| 65 | 156,8 | 157,5 | 157,5 | 157,6 | 157,1 | 156,6 | 155,9 | 155,2 | 154,4 | 153,7 | 152,8 | 152,1 | 151,2 | 147,2 | 136,1 | | 65 |
| 75 | | 129,9 | 130,0 | 130,2 | 129,6 | 129,2 | 128,4 | 127,7 | 126,8 | 126,0 | 125,1 | 124,3 | 123,4 | 122,5 | 119,9 | | 75 |
| 85 | | | 109,8 | 110,2 | 109,6 | 109,2 | 108,3 | 107,6 | 106,7 | 105,9 | 104,9 | 104,1 | 103,1 | 102,2 | 101,2 | | 85 |
| 105 | | | | 33,4 | 82,4 | 81,9 | 81,1 | 80,4 | 79,4 | 78,6 | 77,6 | 76,6 | 75,6 | 74,7 | 73,6 | | 105 |
| 125 | | | | | 33,4 | 64,2 | 63,4 | 62,7 | 61,7 | 60,8 | 59,8 | 58,9 | 57,8 | 56,8 | 55,8 | | 125 |
| 140 | | | | | | 54,4 | 53,7 | 53,0 | 52,0 | 51,1 | 50,1 | 49,1 | 48,1 | 47,1 | 46,0 | | 140 |
| 160 | | | | | | | 43,6 | 43,0 | 42,1 | 41,2 | 40,2 | 39,2 | 38,1 | 37,1 | 36,0 | | 160 |
| 180 | | | | | | | | 35,3 | 34,5 | 33,6 | 32,8 | 31,8 | 30,7 | 29,7 | 28,6 | | 180 |
| 200 | | | | | | | | | 28,5 | 27,7 | 26,7 | 25,8 | 24,7 | 23,7 | 22,6 | | 200 |
| 220 | | | | | | | | | | 22,8 | 21,8 | 20,9 | 19,8 | 18,8 | 17,7 | | 220 |
| 235 | | | | | | | | | | | 18,7 | 17,8 | 16,7 | 15,7 | 14,6 | | 235 |
| 255 | | | | | | | | | | | | 14,2 | 13,2 | 12,2 | 11,1 | | 255 |
| 275 | | | | | | | | | | | | | 10,1 | 9,1 | 8,0 | | 275 |
| 295 | | | | | | | | | | | | | | 6,2 | 4,7 | | 295 |
| 310 | | | | | | | | | | | | | | | 2,4 | | 310 |

L - boom high reach (No. 2821/2316.xx) 236 ft - 404 ft

Working range 86° - 15°



L - boom configuration with 151 ft main boom (No. 2821/2316.xx)

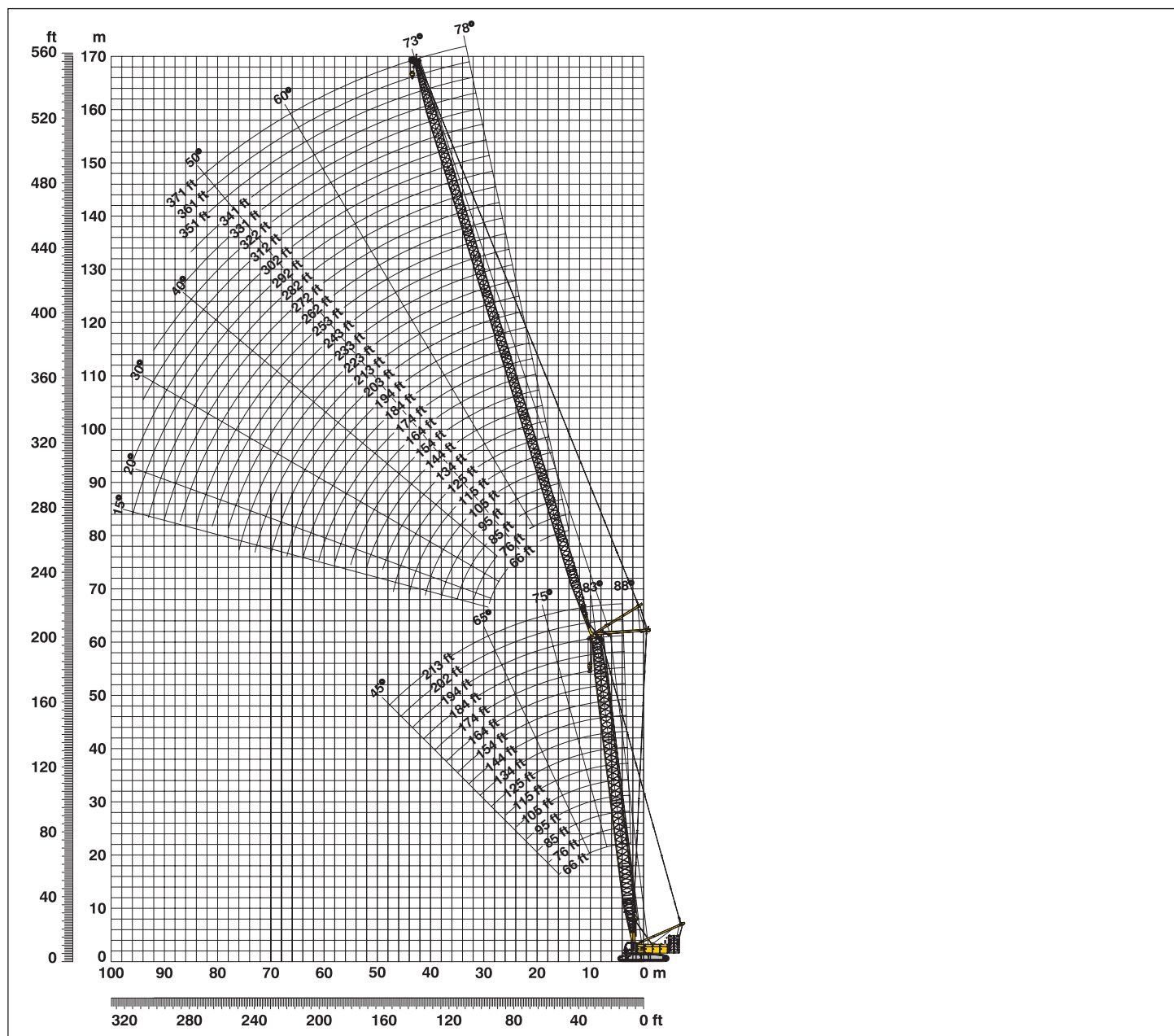
Configuration for L - boom lengths (236 ft - 404 ft)

| | Length* | Amount of boom extensions | | | | | | | | | | | | | | | | | | |
|---------------------------|---------|---------------------------|-----|-----|-----|-----|-----|-----|-----|-----|-----|-----|-----|-----|-----|-----|-----|-----|-----|---|
| | | 1 | 1 | 1 | 1 | 1 | 1 | 1 | 1 | 1 | 1 | 1 | 1 | 1 | 1 | 1 | 1 | 1 | 1 | 1 |
| Boom foot | 32.8 ft | 1 | 1 | 1 | 1 | 1 | 1 | 1 | 1 | 1 | 1 | 1 | 1 | 1 | 1 | 1 | 1 | 1 | 1 | |
| Boom insert | 40 ft | 3 | 3 | 3 | 3 | 3 | 3 | 3 | 3 | 3 | 3 | 3 | 3 | 3 | 3 | 3 | 3 | 3 | 3 | |
| Tapered | 40 ft | 1 | 1 | 1 | 1 | 1 | 1 | 1 | 1 | 1 | 1 | 1 | 1 | 1 | 1 | 1 | 1 | 1 | 1 | |
| Luffing insert | 10 ft | 1 | | 1 | | 1 | | 1 | | 1 | | 1 | | 1 | | 1 | | 1 | | |
| Luffing insert | 20 ft | | 1 | 1 | | 1 | | 1 | | 1 | | 1 | | 1 | | 1 | | 1 | | |
| Luffing insert | 40 ft | | | | 1 | 1 | 1 | 1 | 2 | 2 | 2 | 2 | 3 | 3 | 3 | 3 | 4 | 4 | 4 | |
| Luffing insert | 3.2 ft | 1 | 1 | 1 | 1 | 1 | 1 | 1 | 1 | 1 | 1 | 1 | 1 | 1 | 1 | 1 | 1 | 1 | 1 | |
| Luffing jib head | 32.8 m | 1 | 1 | 1 | 1 | 1 | 1 | 1 | 1 | 1 | 1 | 1 | 1 | 1 | 1 | 1 | 1 | 1 | 1 | |
| Max. L - boom length (ft) | | 236 | 246 | 256 | 266 | 276 | 285 | 295 | 305 | 315 | 325 | 335 | 344 | 354 | 364 | 374 | 384 | 394 | 404 | |

*Actual lengths of boom sectors are metric (e.g. 3m, 6m, 7m, 12 m). The figures shown above are approximate conversions to feet.

Working range - luffing jib (No. 2316.xx) 78° - 15°

Main boom 88° - 45°



Boom configuration for main boom lengths (66 ft - 213 ft) - see table 1 on page 10

Jib configuration for jib lengths (66 ft - 371 ft)

| | Length* | Amount of luffing jib extensions | | | | | | | | | | | | | | | | | | | | | | | | | | | | | | | | | | | | | | |
|-------------------------|---------|----------------------------------|----|----|----|-----|-----|-----|-----|-----|-----|-----|-----|-----|-----|-----|-----|-----|-----|-----|-----|-----|-----|-----|-----|-----|-----|-----|-----|-----|-----|-----|-----|---|---|---|---|---|---|--|
| Luffing jib foot | 32.8 ft | 1 | 1 | 1 | 1 | 1 | 1 | 1 | 1 | 1 | 1 | 1 | 1 | 1 | 1 | 1 | 1 | 1 | 1 | 1 | 1 | 1 | 1 | 1 | 1 | 1 | 1 | 1 | 1 | 1 | 1 | 1 | 1 | 1 | 1 | 1 | | | | |
| Luffing jib insert | 10 ft | | 1 | 1 | 1 | 1 | 1 | 1 | 1 | 1 | 1 | 1 | 1 | 1 | 1 | 1 | 1 | 1 | 1 | 1 | 1 | 1 | 1 | 1 | 1 | 1 | 1 | 1 | 1 | 1 | 1 | 1 | 1 | 1 | 1 | 1 | 1 | | | |
| Luffing jib insert | 20 ft | | | 1 | 1 | 1 | 1 | 1 | 1 | 1 | 1 | 1 | 1 | 1 | 1 | 1 | 1 | 1 | 1 | 1 | 1 | 1 | 1 | 1 | 1 | 1 | 1 | 1 | 1 | 1 | 1 | 1 | 1 | 1 | 1 | 1 | 1 | 1 | | |
| Luffing jib insert | 40 ft | | | | 1 | 1 | 1 | 1 | 2 | 2 | 2 | 2 | 2 | 3 | 3 | 3 | 3 | 4 | 4 | 4 | 4 | 5 | 5 | 5 | 5 | 6 | 6 | 6 | 6 | 7 | 7 | 7 | 7 | 7 | 7 | 7 | 7 | 7 | | |
| Luffing jib head | 32.8 ft | 1 | 1 | 1 | 1 | 1 | 1 | 1 | 1 | 1 | 1 | 1 | 1 | 1 | 1 | 1 | 1 | 1 | 1 | 1 | 1 | 1 | 1 | 1 | 1 | 1 | 1 | 1 | 1 | 1 | 1 | 1 | 1 | 1 | 1 | 1 | 1 | 1 | 1 | |
| Luffing jib length (ft) | | 66 | 76 | 85 | 95 | 105 | 115 | 125 | 134 | 144 | 154 | 164 | 174 | 184 | 194 | 203 | 213 | 223 | 233 | 243 | 253 | 262 | 272 | 282 | 292 | 302 | 312 | 322 | 331 | 341 | 351 | 361 | 371 | | | | | | | |

*Actual lengths of boom sectors are metric (e.g. 3m, 6m, 7m, 12 m). The figures shown above are approximate conversions to feet.

Lift chart - luffing jib (No. 2316.xx)

Main boom angle 83°

Main boom 66 ft

| Radius | Jib length in (ft) | | | | | | | |
|--------|--------------------|-------|-------|------|------|------|------|------|
| | 66 | 105 | 164 | 203 | 243 | 282 | 322 | 371 |
| (ft) | lbs | lbs | lbs | lbs | lbs | lbs | lbs | lbs |
| 37,7 | 257,9 | | | | | | | |
| 50 | 188,8 | 179,6 | | | | | | |
| 70 | 110,9 | 104,7 | 105,8 | | | | | |
| 75 | 101,4 | 93,9 | 93,7 | | | | | |
| 80 | | 85,2 | 84,9 | 82,6 | | | | |
| 90 | | 73,0 | 70,1 | 70,1 | 65,5 | | | |
| 105 | | 59,9 | 56,0 | 54,8 | 54,3 | 53,2 | | |
| 115 | | 52,9 | 48,9 | 47,9 | 46,9 | 47,9 | 36,9 | |
| 130 | | | 41,7 | 39,4 | 38,1 | 38,5 | 34,5 | 23,0 |
| 140 | | | 37,7 | 35,1 | 33,9 | 33,4 | 32,1 | 22,4 |
| 170 | | | 30,0 | 27,0 | 24,8 | 24,8 | 22,3 | 18,2 |
| 210 | | | | 19,4 | 17,6 | 16,3 | 14,0 | 11,7 |
| 250 | | | | | 12,5 | 11,3 | 9,0 | 6,6 |
| 285 | | | | | | 7,9 | 6,0 | 2,9 |
| 290 | | | | | | | 5,6 | 2,5 |
| 325 | | | | | | | 3,0 | |

Main boom 105 ft

| Radius | Jib length in (ft) | | | | | | | |
|--------|--------------------|-------|-------|-------|------|------|------|------|
| | 66 | 105 | 164 | 203 | 243 | 282 | 322 | 371 |
| (ft) | lbs | lbs | lbs | lbs | lbs | lbs | lbs | lbs |
| 42,5 | 258,0 | | | | | | | |
| 55 | 206,3 | 199,6 | | | | | | |
| 75 | 139,3 | 138,4 | 136,1 | | | | | |
| 85 | 115,2 | 118,6 | 116,4 | 106,1 | | | | |
| 95 | | 103,6 | 101,5 | 100,0 | 75,6 | | | |
| 110 | | 86,7 | 84,7 | 83,2 | 73,2 | 52,7 | | |
| 120 | | | 77,9 | 76,1 | 74,6 | 70,9 | 51,2 | 35,2 |
| 135 | | | | 65,8 | 64,3 | 62,8 | 48,8 | 33,8 |
| 160 | | | | 53,2 | 51,8 | 50,3 | 45,5 | 31,0 |
| 180 | | | | 41,8 | 44,4 | 43,0 | 41,1 | 29,3 |
| 215 | | | | | 31,7 | 33,5 | 32,1 | 26,6 |
| 255 | | | | | | 22,5 | 24,6 | 21,6 |
| 260 | | | | | | | 23,9 | 20,9 |
| 295 | | | | | | | 14,6 | 16,5 |
| 315 | | | | | | | | 12,3 |
| 330 | | | | | | | | 9,1 |

Main boom 134 ft

| Radius | Jib length in (ft) | | | | | | | |
|--------|--------------------|-------|-------|------|------|------|------|------|
| | 66 | 105 | 164 | 203 | 243 | 282 | 322 | 371 |
| (ft) | lbs | lbs | lbs | lbs | lbs | lbs | lbs | lbs |
| 46,1 | 233,1 | | | | | | | |
| 60 | 182,7 | 181,3 | | | | | | |
| 75 | 138,0 | 136,9 | 130,1 | | | | | |
| 85 | 118,2 | 117,4 | 115,1 | | | | | |
| 90 | | 109,5 | 107,2 | 97,9 | | | | |
| 100 | | 96,3 | 94,1 | 92,5 | 71,0 | | | |
| 110 | | 85,8 | 83,7 | 82,1 | 69,8 | 50,0 | | |
| 125 | | 33,4 | 71,5 | 69,9 | 66,5 | 48,7 | 33,9 | |
| 140 | | | 62,1 | 60,6 | 59,1 | 46,5 | 32,5 | 21,0 |
| 180 | | | 45,1 | 43,8 | 42,3 | 40,7 | 28,9 | 18,4 |
| 220 | | | | 31,1 | 32,0 | 30,4 | 25,9 | 16,3 |
| 255 | | | | | 24,3 | 24,1 | 22,0 | 14,9 |
| 295 | | | | | | 15,5 | 17,3 | 6,8 |
| 315 | | | | | | | 13,6 | 2,7 |
| 320 | | | | | | | 12,6 | |
| 330 | | | | | | | 10,5 | |

Main boom 164 ft

| Radius | Jib length in (ft) | | | | | | | |
|--------|--------------------|-------|-------|------|------|------|------|------|
| | 66 | 105 | 164 | 203 | 243 | 282 | 322 | 371 |
| (ft) | lbs | lbs | lbs | lbs | lbs | lbs | lbs | lbs |
| 49,7 | 201,0 | | | | | | | |
| 65 | 163,1 | 159,2 | | | | | | |
| 80 | 126,1 | 124,9 | 116,4 | | | | | |
| 90 | 109,0 | 108,2 | 105,7 | 86,2 | | | | |
| 105 | | 89,7 | 87,4 | 83,0 | 63,7 | | | |
| 115 | | 80,3 | 78,1 | 76,5 | 62,6 | 46,6 | | |
| 125 | | 72,5 | 70,5 | 68,9 | 60,8 | 45,9 | 32,4 | |
| 130 | | | 33,4 | 67,1 | 65,6 | 59,6 | 45,3 | 32,4 |
| 140 | | | | 61,2 | 59,7 | 57,3 | 44,0 | 31,7 |
| 185 | | | | 42,9 | 41,5 | 40,0 | 37,3 | 27,7 |
| 225 | | | | | 25,0 | 30,3 | 28,7 | 25,1 |
| 240 | | | | | | 27,5 | 26,0 | 24,1 |
| 260 | | | | | | | 23,4 | 22,8 |
| 300 | | | | | | | | 15,0 |
| 320 | | | | | | | | 12,9 |
| 335 | | | | | | | | 10,2 |

Main boom 194 ft

| Radius | Jib length in (ft) | | | | | | | |
|--------|--------------------|-------|------|------|------|------|------|------|
| | 66 | 105 | 164 | 203 | 243 | 282 | 322 | 371 |
| (ft) | lbs | lbs | lbs | lbs | lbs | lbs | lbs | lbs |
| 53,3 | 184,0 | | | | | | | |
| 65 | 156,1 | 144,8 | | | | | | |
| 85 | 115,5 | 114,3 | 98,9 | | | | | |
| 95 | 100,7 | 99,8 | 93,7 | 75,1 | | | | |
| 110 | | 83,5 | 81,2 | 72,0 | 55,9 | | | |
| 120 | | 75,1 | 72,9 | 68,0 | 53,9 | 43,0 | | |
| 130 | | 68,1 | 66,0 | 64,0 | 52,3 | 42,4 | 30,8 | |
| 145 | | | 57,6 | 56,0 | 45,7 | 40,7 | 30,1 | 19,0 |
| 160 | | | 50,9 | 49,3 | 42,2 | 38,2 | 28,8 | 18,4 |
| 190 | | | 40,6 | 39,3 | 37,7 | 33,0 | 26,5 | 16,7 |
| 225 | | | | 31,0 | 29,6 | 27,4 | 23,8 | 15,2 |
| 265 | | | | | 22,5 | 21,5 | 19,6 | 13,7 |
| 280 | | | | | | 19,5 | 17,8 | 11,8 |
| 305 | | | | | | 14,7 | 15,2 | 6,2 |
| 325 | | | | | | | 12,1 | 2,4 |
| 340 | | | | | | | 9,6 | |

Main boom 213 ft

| Radius | Jib length in (ft) | | | | | | |
|--------|--------------------|-------|------|------|------|------|--|
| | 66 | 105 | 164 | 203 | 243 | 262 | |
| (ft) | lbs | lbs | lbs | lbs | lbs | lbs | |
| 55,7 | 168,5 | | | | | | |
| 70 | 139,0 | 132,6 | | | | | |
| 85 | 114,4 | 111,0 | 89,0 | | | | |
| 95 | 99,8 | 98,7 | 86,1 | | | | |
| 100 | | 92,8 | 84,1 | 68,0 | | | |
| 110 | | 82,6 | 77,2 | 65,9 | 51,7 | | |
| 115 | | 78,3 | 74,5 | 64,6 | 50,9 | 45,3 | |
| 130 | | 67,4 | 65,2 | 59,7 | 48,0 | 43,0 | |
| 160 | | | 50,2 | 48,7 | 38,6 | 35,3 | |
| 190 | | | 40,1 | 38,7 | 35,9 | 32,5 | |
| 200 | | | | 36,1 | 34,3 | 32,0 | |
| 225 | | | | 30,6 | 29,1 | 28,4 | |
| 240 | | | | | 26,4 | 25,7 | |
| 265 | | | | | 22,5 | 21,8 | |
| 280 | | | | | | 19,9 | |
| 285 | | | | | | 18,9 | |

Capacities in metric tons with luffing jib (No. 2316.xx) 273,400 lbs counterweight + 125,700 lbs carbody counterweight. Above lift chart is for reference only. For actual lift duty and complete chart with all available configurations please refer to lift chart in operator's cab or manual.

Lift chart – luffing jib (No. 2316.xx)

Main boom angle 75°

Main boom 66 ft

| Radius | Jib length in (ft) | | | | | | | |
|--------|--------------------|-------|------|------|------|------|------|------|
| | 66 | 105 | 164 | 203 | 243 | 282 | 322 | 371 |
| (ft) | lbs | lbs | lbs | lbs | lbs | lbs | lbs | lbs |
| 60 | 181,2 | | | | | | | |
| 75 | 122,9 | 122,7 | | | | | | |
| 85 | 100,1 | 97,7 | | | | | | |
| 100 | | 75,0 | 73,9 | | | | | |
| 115 | | 63,3 | 58,6 | 55,6 | | | | |
| 125 | | 33,4 | 50,6 | 50,0 | | | | |
| 135 | | | 45,1 | 44,1 | 44,2 | | | |
| 150 | | | 38,7 | 36,3 | 36,5 | 33,6 | | |
| 165 | | | 33,8 | 31,5 | 30,5 | 30,9 | 26,1 | |
| 180 | | | 30,3 | 27,6 | 27,0 | 26,1 | 23,8 | |
| 185 | | | | 26,5 | 26,1 | 24,5 | 22,3 | 16,3 |
| 220 | | | | 19,6 | 19,1 | 16,7 | 14,4 | 12,0 |
| 255 | | | | | 13,9 | 12,1 | 9,3 | 6,7 |
| 295 | | | | | | 8,0 | 5,4 | 2,7 |
| 300 | | | | | | | 5,1 | 2,2 |
| 335 | | | | | | | 3,0 | |

Main boom 105 ft

| Radius | Jib length in (ft) | | | | | | | |
|--------|--------------------|-------|------|------|------|------|------|------|
| | 66 | 105 | 164 | 203 | 243 | 282 | 322 | 371 |
| (ft) | lbs | lbs | lbs | lbs | lbs | lbs | lbs | lbs |
| 70 | 145,0 | | | | | | | |
| 85 | 114,2 | 112,8 | | | | | | |
| 95 | 99,6 | 98,5 | | | | | | |
| 110 | | 82,4 | 79,9 | | | | | |
| 125 | | 70,5 | 68,2 | 66,5 | | | | |
| 135 | | 64,1 | 62,0 | 60,3 | | | | |
| 145 | | | 56,7 | 55,1 | 53,4 | | | |
| 160 | | | 50,1 | 48,5 | 46,8 | 45,1 | | |
| 175 | | | 44,6 | 43,1 | 41,5 | 39,8 | 29,7 | |
| 190 | | | 40,0 | 38,6 | 37,0 | 35,4 | 29,0 | |
| 195 | | | | 37,3 | 35,7 | 34,0 | 28,5 | 17,8 |
| 230 | | | | 29,6 | 28,1 | 26,5 | 24,8 | 16,5 |
| 265 | | | | | 22,5 | 21,0 | 19,5 | 15,1 |
| 305 | | | | | | 16,2 | 14,8 | 7,7 |
| 330 | | | | | | | 12,4 | 2,2 |
| 345 | | | | | | | 10,4 | |

Main boom 134 ft

| Radius | Jib length in (ft) | | | | | | | |
|--------|--------------------|-------|------|------|------|------|------|------|
| | 66 | 105 | 164 | 203 | 243 | 282 | 322 | 371 |
| (ft) | lbs | lbs | lbs | lbs | lbs | lbs | lbs | lbs |
| 75 | 129,6 | | | | | | | |
| 90 | 103,7 | 102,1 | | | | | | |
| 105 | 33,4 | 84,7 | | | | | | |
| 115 | | 75,8 | 73,1 | | | | | |
| 135 | | 62,3 | 59,9 | 58,1 | | | | |
| 140 | | 59,5 | 57,2 | 55,5 | | | | |
| 150 | | | 52,4 | 50,7 | 49,0 | | | |
| 165 | | | 46,4 | 44,8 | 43,0 | 41,3 | | |
| 185 | | | 40,0 | 38,4 | 36,7 | 35,0 | 22,6 | |
| 200 | | | 36,0 | 34,5 | 33,0 | 31,3 | 22,3 | |
| 205 | | | | 33,4 | 31,8 | 30,1 | 22,1 | 16,6 |
| 235 | | | | 27,5 | 25,9 | 24,3 | 21,1 | 15,6 |
| 275 | | | | | 20,1 | 18,6 | 17,0 | 13,9 |
| 310 | | | | | | 14,8 | 13,2 | 8,2 |
| 335 | | | | | | | 11,0 | 2,7 |
| 350 | | | | | | | 9,8 | |

Main boom 164 ft

| Radius | Jib length in (ft) | | | | | | | |
|--------|--------------------|------|------|------|------|------|------|------|
| | 66 | 105 | 164 | 213 | 243 | 282 | 322 | 371 |
| (ft) | lbs | lbs | lbs | lbs | lbs | lbs | lbs | lbs |
| 85 | 107,7 | | | | | | | |
| 100 | 88,4 | 86,7 | | | | | | |
| 110 | 78,6 | 77,2 | | | | | | |
| 125 | | 66,1 | 63,3 | | | | | |
| 145 | | 55,0 | 52,5 | 50,1 | | | | |
| 150 | | 52,7 | 50,3 | 47,9 | | | | |
| 160 | | | 46,3 | 44,0 | 42,7 | | | |
| 175 | | | 41,2 | 39,0 | 37,7 | 35,5 | | |
| 190 | | | 37,0 | 34,8 | 33,6 | 31,6 | 27,4 | |
| 205 | | | 33,4 | 31,3 | 30,2 | 28,4 | 25,3 | |
| 210 | | | | 30,3 | 29,1 | 27,4 | 24,3 | 16,2 |
| 255 | | | | 22,6 | 21,5 | 19,9 | 17,5 | 13,9 |
| 285 | | | | | 17,7 | 16,2 | 14,2 | 10,7 |
| 320 | | | | | | 12,8 | 11,2 | 6,2 |
| 340 | | | | | | | 9,6 | 2,6 |
| 360 | | | | | | | 8,0 | |

Main boom 194 ft

| Radius | Jib length in (ft) | | | | | | | |
|--------|--------------------|------|------|------|------|------|------|------|
| | 66 | 105 | 164 | 213 | 243 | 282 | 322 | 371 |
| (ft) | lbs | lbs | lbs | lbs | lbs | lbs | lbs | lbs |
| 90 | 96,8 | | | | | | | |
| 105 | 80,3 | 66,4 | | | | | | |
| 120 | 68,1 | 66,7 | | | | | | |
| 130 | | 60,5 | 57,5 | | | | | |
| 155 | | 48,6 | 46,0 | 43,5 | | | | |
| 160 | | 46,6 | 44,1 | 41,7 | | | | |
| 165 | | | 42,4 | 40,0 | 38,2 | | | |
| 180 | | | 37,8 | 35,5 | 34,0 | 30,7 | | |
| 200 | | | 32,8 | 30,6 | 29,4 | 26,4 | 23,1 | |
| 215 | | | 29,7 | 27,6 | 26,4 | 23,7 | 20,5 | |
| 220 | | | | 26,7 | 25,5 | 22,8 | 19,7 | 15,2 |
| 265 | | | | 19,9 | 18,8 | 16,9 | 14,0 | 10,2 |
| 290 | | | | | 16,0 | 14,4 | 11,6 | 7,9 |
| 330 | | | | | | 10,8 | 8,6 | 4,3 |
| 345 | | | | | | | 7,6 | 2,3 |
| 370 | | | | | | | 5,6 | |

Main boom 213 ft

| Radius | Jib length in (ft) | | | | | | |
|--------|--------------------|------|------|------|------|------|--|
| | 66 | 105 | 164 | 213 | 243 | 262 | |
| (ft) | lbs | lbs | lbs | lbs | lbs | lbs | |
| 95 | 88,1 | | | | | | |
| 115 | 69,9 | 68,1 | | | | | |
| 125 | 63,0 | 61,5 | | | | | |
| 135 | | 56,0 | 52,9 | | | | |
| 155 | | 47,1 | 44,4 | | | | |
| 160 | | 45,2 | 42,6 | 39,6 | | | |
| 170 | | | 39,3 | 36,7 | 34,2 | | |
| 180 | | | 36,5 | 34,0 | 31,8 | 30,1 | |
| 200 | | | 31,7 | 29,3 | 27,5 | 25,9 | |
| 220 | | | 27,6 | 25,5 | 24,0 | 22,5 | |
| 240 | | | | 22,3 | 21,1 | 19,7 | |
| 265 | | | | 18,9 | 17,8 | 16,8 | |
| 280 | | | | | 16,1 | 15,3 | |
| 295 | | | | | 14,6 | 13,8 | |
| 300 | | | | | | 13,4 | |
| 315 | | | | | | 12,0 | |

Capacities in metric tons with luffing jib (No. 2316.xx) 273,400 lbs counterweight + 125,700 lbs carbody counterweight. Above lift chart is for reference only. For actual lift duty and complete chart with all available configurations please refer to lift chart in operator's cab or manual.

Lift chart - luffing jib (No. 2316.xx)

Main boom angle 65°

Main boom 66 ft

| Radius | Jib length in (ft) | | | | | | | |
|--------|--------------------|------|------|------|------|------|-----|-----|
| | 66 | 105 | 164 | 213 | 243 | 282 | 322 | 371 |
| (ft) | lbs | lbs | lbs | lbs | lbs | lbs | lbs | lbs |
| 80 | 121,9 | | | | | | | |
| 100 | 33,4 | 77,0 | | | | | | |
| 135 | | 46,8 | 45,5 | | | | | |
| 165 | | | 30,8 | 31,3 | | | | |
| 180 | | | 28,0 | 25,4 | 23,8 | | | |
| 195 | | | 24,2 | 21,3 | 20,0 | | | |
| 200 | | | | 20,0 | 18,8 | 15,0 | | |
| 225 | | | | 15,8 | 14,0 | 11,9 | 9,3 | |
| 240 | | | | 13,8 | 11,9 | 9,9 | 7,6 | |
| 255 | | | | | 10,5 | 7,9 | 5,7 | 4,4 |
| 260 | | | | | 10,0 | 7,4 | 5,3 | 4,0 |
| 270 | | | | | 9,0 | 6,4 | 4,2 | 2,0 |
| 280 | | | | | | 5,8 | 3,3 | |
| 295 | | | | | | 4,8 | 2,1 | |
| 300 | | | | | | 4,5 | | |
| 305 | | | | | | 4,2 | | |

Main boom 105 ft

| Radius | Jib length in (ft) | | | | | | | |
|--------|--------------------|------|------|------|------|------|------|------|
| | 66 | 105 | 164 | 203 | 243 | 282 | 322 | 371 |
| (ft) | lbs | lbs | lbs | lbs | lbs | lbs | lbs | lbs |
| 95 | 94,1 | | | | | | | |
| 115 | 33,4 | 66,4 | | | | | | |
| 150 | | 52,8 | 50,3 | | | | | |
| 175 | | | 41,2 | 39,5 | | | | |
| 195 | | | 35,7 | 34,0 | 32,3 | | | |
| 210 | | | 32,3 | 30,7 | 29,0 | | | |
| 220 | | | | 28,8 | 27,1 | 25,3 | | |
| 240 | | | | 25,3 | 23,7 | 22,0 | 20,1 | |
| 245 | | | | 24,5 | 22,9 | 21,2 | 19,5 | |
| 270 | | | | | 19,5 | 17,9 | 16,2 | 13,2 |
| 285 | | | | | 17,7 | 16,1 | 14,5 | 11,6 |
| 300 | | | | | | 14,6 | 12,9 | 10,2 |
| 320 | | | | | | 12,7 | 11,1 | 8,5 |
| 340 | | | | | | | 9,5 | 5,0 |
| 350 | | | | | | | 8,8 | 2,6 |
| 360 | | | | | | | 8,1 | |

Main boom 134 ft

| Radius | Jib length in (ft) | | | | | | | |
|--------|--------------------|------|------|------|------|------|------|-----|
| | 66 | 105 | 164 | 203 | 243 | 282 | 322 | 371 |
| (ft) | lbs | lbs | lbs | lbs | lbs | lbs | lbs | lbs |
| 104,8 | 66,4 | | | | | | | |
| 125 | 64,1 | | | | | | | |
| 130 | | 59,5 | | | | | | |
| 165 | | 44,2 | 41,6 | | | | | |
| 185 | | | 35,7 | 33,9 | | | | |
| 210 | | | 30,1 | 28,4 | 26,6 | | | |
| 220 | | | 28,2 | 26,5 | 24,7 | | | |
| 230 | | | | 24,8 | 23,1 | 21,2 | | |
| 255 | | | | 21,1 | 19,5 | 17,7 | 15,5 | |
| 260 | | | | 20,5 | 18,8 | 17,1 | 14,9 | |
| 280 | | | | | 16,5 | 14,8 | 12,8 | 9,1 |
| 300 | | | | | 14,5 | 12,8 | 10,9 | 7,4 |
| 320 | | | | | | 11,1 | 9,4 | 5,9 |
| 335 | | | | | | 9,9 | 8,2 | 4,9 |
| 360 | | | | | | | 6,1 | 2,3 |
| 375 | | | | | | | 5,0 | |

Main boom 164 ft

| Radius | Jib length in (ft) | | | | | | | |
|--------|--------------------|------|------|------|------|------|------|-----|
| | 66 | 105 | 164 | 203 | 243 | 282 | 322 | 371 |
| (ft) | lbs | lbs | lbs | lbs | lbs | lbs | lbs | lbs |
| 117,3 | 65,1 | | | | | | | |
| 140 | 52,3 | 50,6 | | | | | | |
| 175 | | 38,1 | 35,3 | | | | | |
| 180 | | 33,4 | 34,0 | | | | | |
| 200 | | | 29,5 | 27,6 | | | | |
| 220 | | | 25,8 | 24,0 | 22,0 | | | |
| 235 | | | 23,3 | 21,6 | 19,8 | | | |
| 245 | | | | 20,2 | 18,4 | 16,1 | | |
| 265 | | | | 17,8 | 16,0 | 13,9 | 10,9 | |
| 275 | | | | 16,6 | 15,0 | 12,9 | 10,0 | |
| 295 | | | | | 13,0 | 11,2 | 8,3 | 4,6 |
| 310 | | | | | 11,7 | 10,0 | 7,2 | 3,6 |
| 335 | | | | | | 7,9 | 5,5 | 2,1 |
| 350 | | | | | | 6,7 | 4,3 | |
| 360 | | | | | | | 3,6 | |
| 380 | | | | | | | 2,2 | |

Main boom 194 ft

| Radius | Jib length in (ft) | | | | | | | |
|--------|--------------------|------|------|------|------|------|-----|-----|
| | 66 | 105 | 164 | 203 | 243 | 282 | 322 | 371 |
| (ft) | lbs | lbs | lbs | lbs | lbs | lbs | lbs | lbs |
| 129,8 | 53,4 | | | | | | | |
| 150 | 44,6 | | | | | | | |
| 155 | | 41,0 | | | | | | |
| 190 | | 31,5 | 28,6 | | | | | |
| 210 | | | 24,8 | 22,7 | | | | |
| 235 | | | 20,9 | 19,1 | 16,6 | | | |
| 245 | | | 19,6 | 17,8 | 15,4 | | | |
| 250 | | | | 17,2 | 14,9 | | | |
| 255 | | | | 16,6 | 14,4 | 11,3 | | |
| 280 | | | | 14,0 | 12,1 | 9,2 | 6,2 | |
| 285 | | | | 13,6 | 11,8 | 8,8 | 5,8 | |
| 295 | | | | | 10,9 | 8,1 | 5,1 | |
| 300 | | | | | 10,5 | 7,7 | 4,8 | |
| 320 | | | | | 8,9 | 6,4 | 3,6 | |
| 340 | | | | | | 4,9 | 2,3 | |
| 360 | | | | | | 3,5 | | |

Main boom 213 ft

| Radius | Jib length in (ft) | | | | | | |
|--------|--------------------|------|------|------|------|------|--|
| | 66 | 105 | 164 | 203 | 243 | 262 | |
| (ft) | lbs | lbs | lbs | lbs | lbs | lbs | |
| 138,1 | 46,7 | | | | | | |
| 160 | 38,7 | | | | | | |
| 161 | | 36,6 | | | | | |
| 195 | | 28,4 | 25,3 | | | | |
| 200 | | 27,4 | 24,5 | | | | |
| 220 | | | 21,2 | 18,9 | | | |
| 240 | | | 18,5 | 16,5 | 13,3 | | |
| 255 | | | 16,8 | 14,9 | 11,9 | 10,5 | |
| 260 | | | | 14,4 | 11,5 | 10,0 | |
| 280 | | | | 12,5 | 9,9 | 8,5 | |
| 295 | | | | 11,2 | 8,9 | 7,5 | |
| 300 | | | | | 8,5 | 7,1 | |
| 320 | | | | | 7,0 | 5,8 | |
| 330 | | | | | 6,2 | 5,0 | |
| 340 | | | | | | 4,3 | |
| 350 | | | | | | 3,6 | |

Capacities in metric tons with luffing jib (No. 2316.xx) 273,400 lbs counterweight + 125,700 lbs carbody counterweight. Above lift chart is for reference only. For actual lift duty and complete chart with all available configurations please refer to lift chart in operator's cab or manual.

Lift chart – luffing jib (No. 2316.xx)

Main boom angle 45°

Main boom 66 ft

| Radius (ft) | Jib length in (ft) | | | | | | | |
|----------------|--------------------|------------|------------|------------|------------|------------|------------|------------|
| | 66 lbs | 105 lbs | 164 lbs | 203 lbs | 243 lbs | 282 lbs | 322 lbs | 371 lbs |
| 109,7 | 66,4 | | | | | | | |
| 115 | 73,9 | | | | | | | |
| 142 | | 54,7 | | | | | | |
| 155 | | 45,8 | | | | | | |
| 195 | | | 29,8 | | | | | |
| 210 | | | 24,9 | | | | | |
| 225 | | | | 19,3 | | | | |
| 250 | | | | 14,9 | | | | |
| 255 | | | | | 10,9 | | | |
| 285 | | | | | 8,6 | | | |
| 290 | | | | | | 5,4 | | |
| 325 | | | | | | 3,0 | | |

Main boom 105 ft

| Radius (ft) | Jib length in (ft) | | | | | | | |
|----------------|--------------------|------------|------------|------------|------------|------------|------------|------------|
| | 66 lbs | 105 lbs | 164 lbs | 203 lbs | 243 lbs | 282 lbs | 322 lbs | 371 lbs |
| 137,5 | 53,5 | | | | | | | |
| 145 | 33,4 | | | | | | | |
| 170 | | 39,6 | | | | | | |
| 180 | | 36,8 | | | | | | |
| 220 | | | 25,7 | | | | | |
| 240 | | | 22,5 | | | | | |
| 255 | | | | 18,8 | | | | |
| 275 | | | | 16,6 | | | | |
| 285 | | | | | 13,8 | | | |
| 315 | | | | | 11,2 | 9,4 | | |
| 350 | | | | | | 7,0 | 4,5 | |
| 385 | | | | | | | 2,1 | |

Main boom 134 ft

| Radius (ft) | Jib length in (ft) | | | | | | | |
|----------------|--------------------|------------|------------|------------|------------|------------|------------|------------|
| | 66 lbs | 105 lbs | 164 lbs | 203 lbs | 243 lbs | 282 lbs | 322 lbs | 371 lbs |
| 158,4 | 40,5 | | | | | | | |
| 165 | 38,4 | | | | | | | |
| 195 | | 29,4 | | | | | | |
| 205 | | 27,4 | | | | | | |
| 240 | | | 19,2 | | | | | |
| 260 | | | 16,9 | | | | | |
| 275 | | | | 13,6 | | | | |
| 300 | | | | 11,4 | | | | |
| 305 | | | | | 9,1 | | | |
| 335 | | | | | 7,0 | | | |
| 340 | | | | | | 4,0 | | |
| 370 | | | | | | 2,1 | | |

Main boom 164 ft

| Radius (ft) | Jib length in (ft) | | | | | | | | |
|----------------|--------------------|------------|------------|------------|------------|--|--|--|--|
| | 66 lbs | 105 lbs | 164 lbs | 203 lbs | 243 lbs | | | | |
| 179,3 | 29,9 | | | | | | | | |
| 185 | 28,8 | | | | | | | | |
| 215 | | 21,7 | | | | | | | |
| 225 | | 20,2 | | | | | | | |
| 260 | | | 13,3 | | | | | | |
| 280 | | | 11,6 | | | | | | |
| 294 | | | | 8,4 | | | | | |
| 320 | | | | 6,4 | | | | | |
| 325 | | | | | 3,3 | | | | |
| 345 | | | | | 2,2 | | | | |

Main boom 194 ft

| Radius (ft) | Jib length in (ft) | | | | | | | |
|----------------|--------------------|------------|------------|------------|--|--|--|--|
| | 66 lbs | 105 lbs | 164 lbs | 203 lbs | | | | |
| 200,2 | 21,5 | | | | | | | |
| 205 | 20,8 | | | | | | | |
| 235 | | 15,1 | | | | | | |
| 245 | | 14,1 | | | | | | |
| 285 | | | 7,2 | | | | | |
| 305 | | | 5,7 | | | | | |
| 315 | | | | 2,3 | | | | |
| 320 | | | | 2,0 | | | | |

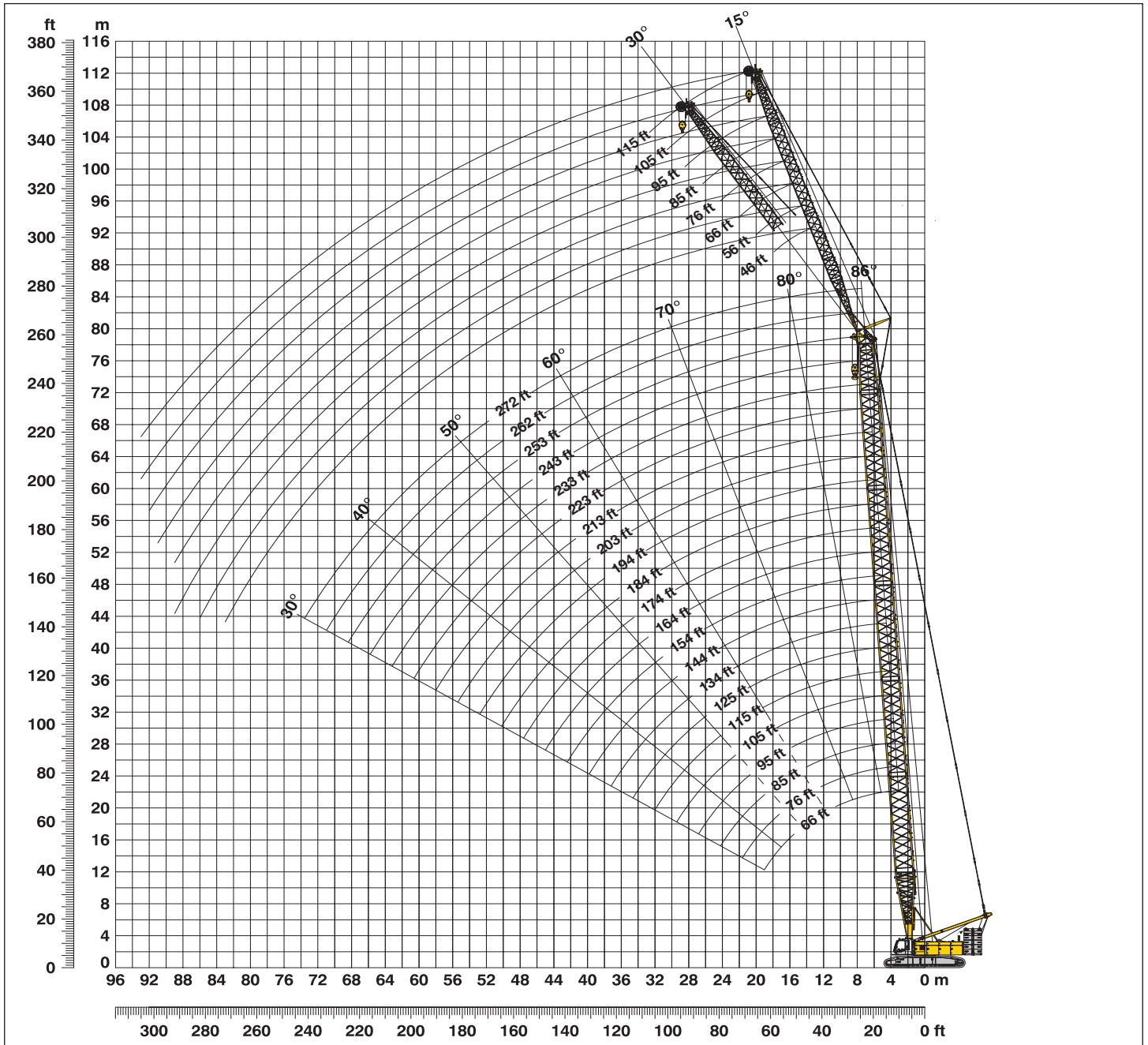
Main boom 213 ft

| Radius (ft) | Jib length in (ft) | | | | | | |
|----------------|--------------------|------------|------------|--|--|--|--|
| | 66 lbs | 105 lbs | 164 lbs | | | | |
| 214,1 | 16,5 | | | | | | |
| 220 | 15,9 | | | | | | |
| 250 | | 11,0 | | | | | |
| 260 | | 10,1 | | | | | |
| 295 | | | 3,1 | | | | |
| 300 | | | 2,9 | | | | |
| 310 | | | 2,3 | | | | |
| 315 | | | 2,0 | | | | |

Capacities in metric tons with luffing jib (No. 2316.xx) 273,400 lbs counterweight + 125,700 lbs carbody counterweight. Above lift chart is for reference only. For actual lift duty and complete chart with all available configurations please refer to lift chart in operator's cab or manual.

Working range - fixed jib (No. 1713.xx) 15° and 30°

Main boom 88° - 30°



Boom configuration for boom lengths (66 ft - 272 ft) – see table 1 on page 10

Fixed jib configuration for fixed jib lengths (36 ft - 115 ft)

| | Length* | Amount of fixed jib extensions | | | | | | | | |
|-----------------------|---------|--------------------------------|----|----|----|----|----|-----|-----|---|
| Fixed jib foot | 23 ft | 1 | 1 | 1 | 1 | 1 | 1 | 1 | 1 | 1 |
| Fixed jib insert | 10 ft | | 1 | | | 1 | | 1 | | 1 |
| Fixed jib insert | 20 ft | | | 1 | | 1 | | | 1 | 1 |
| Fixed jib insert | 40 ft | | | | | | 1 | | 1 | 1 |
| Fixed jib head | 23 ft | 1 | 1 | 1 | 1 | 1 | 1 | 1 | 1 | 1 |
| Fixed jib length (ft) | | 46 | 56 | 66 | 76 | 85 | 95 | 105 | 115 | |

*Actual lengths of boom sectors are metric (e.g. 3m, 6m, 7m, 12 m). The figures shown above are approximate conversions to feet.

Liebherr-Werk Nenzing GmbH
P.O. Box 10, A-6710 Nenzing/Austria
Tel.: +43 50809 41-473
Fax: +43 50809 41-499
crawler.crane@liebherr.com
www.liebherr.com

Liebherr Nenzing Crane Co.
7075 Bennington Street, Houston, TX 77028-5812
Phone: +1 713 636 4050
Fax: +1 713 636 4051
crawler.crane@inc.liebherr.com
www.liebherr.com