

Technical Databook

Curing Bladders 2019 / 2020

About us:

Founded in 1871, Continental has extensive know-how in tire technology and consequently, in the manufacturing and application of bladders for tire production.

The ContiBladders Unit has been established to focus all bladder related expertise and resources from various areas of our corporation into one organization to better serve our worldwide customers.

We are committed to create value for our customers by providing high quality ContiBladders for curing and tire building at competitive prices.

Every year we manufacture more than 750.000 ContiBladders used in our customer's plants worldwide.

In our warehouses we constantly keep about 70.000 bladders on inventory for quick delivery.

Triggered by customer specific requirements, we develop new solutions for curing and tire building bladders, applying e.g. Finite Element Method (FEM) and the full range of R&D resources available at Continental.

Using our products, you benefit from our experience of producing more than 150 million tires per year in Continental Tire plants.

With ContiBladders manufacturing sites on three continents and tire plants all over the world, we have our products and application support as close as possible.

Wherever you are, we are nearby.



Contents

About us	2
Contacts	3
Advantages	4
Recommendations	5
Curing Bladder Surface Design	6 - 7
ContiBladders Website and ContiBladders App	7
Autoform Type Bladders for	
Passenger / Light Truck Tires	8 - 9
Truck Tires	9
Hydraulic Type Bladders for	
Passenger / Light Truck Tires	10 - 11
Truck Tires	12
BOM Type Bladders for	
Passenger / Light Truck Tires Radial	14 - 15
Passenger / Light Truck Tires Bias	16 - 17
Truck Tires Radial	18
Truck Tires Bias	19
OTR Tires Bias / Radial	20
OTR Tires Bias	21 - 23
Kart / Wheelbarrow / Industrial / Farm Implement Tires	24 - 25
Motorcycle Tires	26
Bicycle Tires	28
Air Springs	30
Retreading	32
Publisher´s Imprint	35

Contacts

Head Office Hannover (Germany)

Phone: +49 511 976 45 20
 Fax: +49 511 976 36 54

Representative EMEA

Phone: +49 511 976 33 66
 Fax: +49 511 976 36 54
 email:
 torsten.rupp@conti.de

Representative APAC

Phone: +603 7787 88 34
 Fax: +603 7781 97 66
 email:
 raymon.ooi-kim-leng@conti.my

Representative Americas

Phone: +1 704 583 8772
 Fax: +1 704 587 6558
 email:
 steven.bellenger@conti-na.com

Advantages of ContiBladders

- › ContiBladders Unit is an independent organization inside the Continental Corporation, fully dedicated to development, manufacturing and sales of bladders
- › ContiBladders R&D utilizes all resources of Continental's tire R&D
- › Customer specific developments
- › Extensive bladder application experience from both Continental tire plants and worldwide customers
- › Excellent technical and logistical support for our customers
- › Global manufacturing and support base
- › Sufficient inventory for just-in-time delivery
- › Sustainable and flexible compound
- › Bladder contour optimized to tire contour
- › Surface structure to prevent trapped air
- › Long lasting and simple to use during service



Recommendations for achieving best Bladder Performance

ContiBladders are manufactured using a well proven long-lasting heat conductive butyl rubber compound. The high degree of elasticity of the bladder guarantees trouble-free molding and stripping.

The following points should be considered under all circumstances:

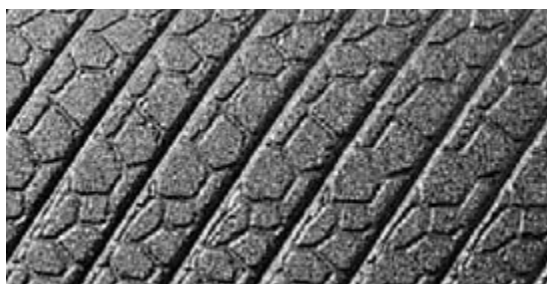
1. Bladders should be stored in a dark and dry place, protected from direct sunlight and ozone sources.
2. Please follow press manual instructions for proper mounting. Any imperfection of the bladder mounting rings needs to be avoided.
3. Before mounting bladders into curing press we recommend to pre-treat the bladders with a bladder coating material.
4. Before tire curing starts, the bladder should be fully warmed up. For this, the machine should be operated according to the press manual.
5. In case of pre-inflating during the warm up, the bladder outside diameter must not exceed the tire sidewall plate outside diameter of the tire mold, in order to avoid non-symmetric deformation.
6. If the bladder has cooled down after an interruption in the curing process, it is imperative to warm it up again.
7. Heavily oxygenated water should be neutralized by the addition of oxygen scavengers or similar ingredients, in order to avoid deterioration of the bladder.
8. To avoid sticking, trapped air or stripping problems, a proper application of a tire inside paint is recommended.

To optimize your bladder performance furthermore we recommend the application of a permanent bladder coating material.

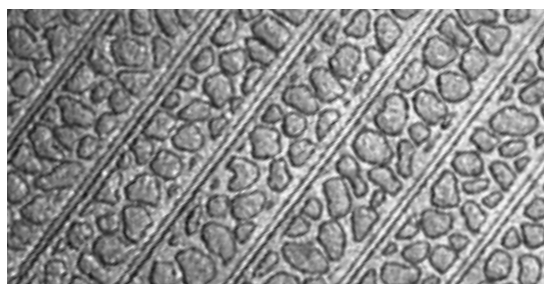
For our customers, we offer on-site service to optimize bladder application and performance.

In case of any questions please contact your responsible sales representative (see on page 3).

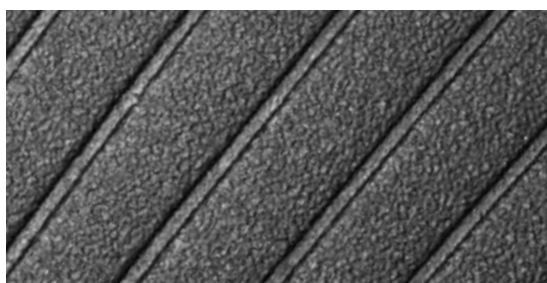
ContiBladders Surface Design



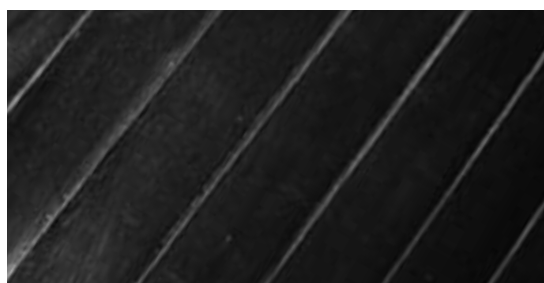
Type 1 Advanced pebbles



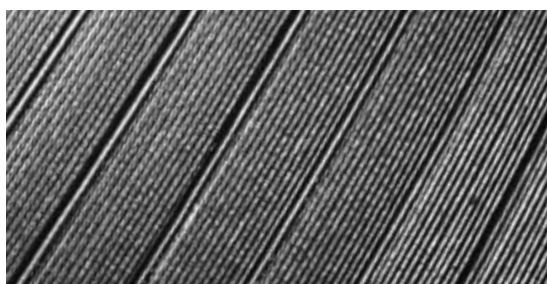
Type 2 Standard pebbles



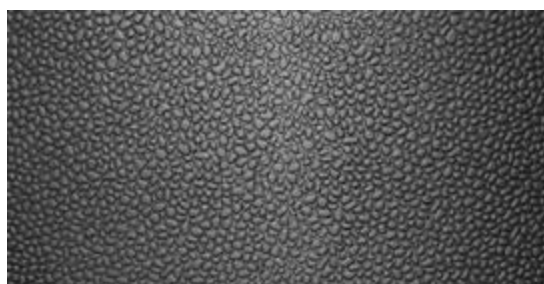
Type 3 Fine sandpaper



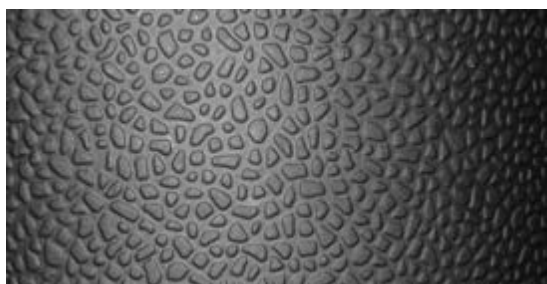
Type 4 Smooth, venting grooves



Type 5 Grooves



Type 6 Small pebbles



Type 7 Large pebbles



Type 10 Smooth, without venting grooves

Advanced pebbles 1.1



Type 1.1 Advanced pebbles 1.1

The R&D team at ContiBladders has optimized the bladder surface to help reduce tire innerliner consumption.

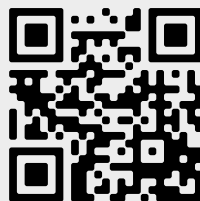
Future articles will incorporate this upgraded design.

ContiBladders Website and ContiBladders App



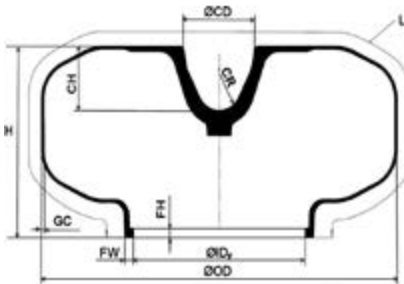
For more information about our products and organization, please visit our redesigned website at <http://www.conti-bladders.com>

At our website you can view and download pdf versions of our product catalogs, see upcoming events such as technical expos where you can visit our booth to discuss our products in person, and also access our Bladder App.



With our ContiBladders App you can get bladder fitment information with only a few key strokes using your tire size. Want to see if your bladder fitment is optimized? We have an App for that!

Autoform Type Bladders Application in Autoform Presses

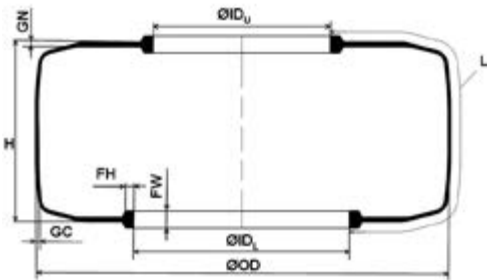


Bladder Description	Article Number		(ID) _p Foot ID	(L) Length	(H) Height	(OD) Outside Dia- meter	(GC) Crown Gauge	(FH) Foot Height	(FW) Foot Width	(CD) Cone Dia- meter	(CH) Cone Height	(CR) Cone Bottom Radius		Trimmed Weight	Surface Design	Packing Unit
Passenger / Light Truck Tires																
AP 12 A	2017912	mm	245	940	203	480	4.5	11.5	12.5	63	45	16	kg	3.0	2	60
		inch	9.6	37.0	8.0	18.9	0.2	0.5	0.5	2.5	1.8	0.6	lbs	6.6		
AP 2 K 260	2013222	mm	260	1051	240	505	4.5	13.5	13.5	112	Kobe	Kobe	kg	3.5	1	60
		inch	10.2	41.4	9.4	19.9	0.2	0.5	0.5	4.4	system	system	lbs	7.7		
AP 13-0 C	2017951	mm	273	924	210	470	4.5	13.5	13.5	63	45	16	kg	2.9	3	60
		inch	10.7	36.4	8.3	18.5	0.2	0.5	0.5	2.5	1.8	0.6	lbs	6.4		
AP 13-1 C	2017942	mm	273	940	199	495	4.5	13.5	13.5	63	45	16	kg	2.9	4	60
		inch	10.7	37.0	7.8	19.5	0.2	0.5	0.5	2.5	1.8	0.6	lbs	6.4		
AP 13-1 CK	2013252	mm	273	940	199	495	4.5	13.5	13.5	63	Kobe	Kobe	kg	3.0	4	60
		inch	10.7	37.0	7.8	19.5	0.2	0.5	0.5	2.5	system	system	lbs	6.6		
AP 13-2 C	2017938	mm	273	988	207	520	4.5	13.5	13.5	63	45	16	kg	3.5	2	60
		inch	10.7	38.9	8.1	20.5	0.2	0.5	0.5	2.5	1.8	0.6	lbs	7.7		
AP 13-3 A	2017927	mm	273	1022	219	530	4.5	13.5	13.5	63	45	16	kg	3.4	2	60
		inch	10.7	40.2	8.6	20.9	0.2	0.5	0.5	2.5	1.8	0.6	lbs	7.5		
AP 2 C 273	2013074	mm	273	1051	240	505	4.5	13.5	13.5	63	45	16	kg	3.5	1	60
		inch	10.7	41.4	9.4	19.9	0.2	0.5	0.5	2.5	1.8	0.6	lbs	7.7		
AP 2 273	2013075	mm	273	1051	240	505	4.5	13.5	13.5	112	90	35	kg	3.8	1	60
		inch	10.7	41.4	9.4	19.9	0.2	0.5	0.5	4.4	3.5	1.4	lbs	8.4		
AP 2 K 273	2013076	mm	273	1051	240	505	4.5	13.5	13.5	112	Kobe	Kobe	kg	3.5	1	60
		inch	10.7	41.4	9.4	19.9	0.2	0.5	0.5	4.4	system	system	lbs	7.7		
AP 13-60-3 C	2017939	mm	273	1116	248	540	4.5	13.5	13.5	63	45	16	kg	3.9	2	60
		inch	10.7	43.9	9.8	21.3	0.2	0.5	0.5	2.5	1.8	0.6	lbs	8.6		
AP 4 C 273	2013077	mm	273	1189	265	565	4.5	13.5	13.5	63	45	16	kg	4.2	1	50
		inch	10.7	46.8	10.4	22.2	0.2	0.5	0.5	2.5	1.8	0.6	lbs	9.2		
AP 4 273	2013078	mm	273	1189	265	565	4.5	13.5	13.5	112	90	35	kg	4.5	1	35
		inch	10.7	46.8	10.4	22.2	0.2	0.5	0.5	4.4	3.5	1.4	lbs	10.0		
AP 4 K 273	2013079	mm	273	1189	265	565	4.5	13.5	13.5	112	Kobe	Kobe	kg	4.3	1	50
		inch	10.7	46.8	10.4	22.2	0.2	0.5	0.5	4.4	system	system	lbs	9.4		
AP 13-60-5	2017901	mm	273	1207	272	580	4.5	13.5	13.5	63	45	16	kg	4.4	2	60
		inch	10.7	47.5	10.7	22.8	0.2	0.5	0.5	2.5	1.8	0.6	lbs	9.7		
AP 5 C 273	2013143	mm	273	1302	297	570	4.3	13.5	13.5	63	45	16	kg	4.8	1	40
		inch	10.7	51.3	11.7	22.4	0.2	0.5	0.5	2.5	1.8	0.6	lbs	10.6		
AP 5 273	2013144	mm	273	1302	297	570	4.3	13.5	13.5	112	90	35	kg	4.9	1	50
		inch	10.7	51.3	11.7	22.4	0.2	0.5	0.5	4.4	3.5	1.4	lbs	10.8		
AP 5 K 273	2013145	mm	273	1302	297	570	4.3	13.5	13.5	112	Kobe	Kobe	kg	4.7	1	40
		inch	10.7	51.3	11.7	22.4	0.2	0.5	0.5	4.4	system	system	lbs	10.4		
AP 6 C 273	2013083	mm	273	1400	360	610	4.5	13.5	13.5	63	45	16	kg	5.3	1	50
		inch	10.7	55.1	14.2	24.0	0.2	0.5	0.5	2.5	1.8	0.6	lbs	11.7		

Bladder Description	Article Number		(ID _p) Foot ID	(L) Length	(H) Height	(OD) Outside Dia- meter	(GC) Crown Gauge	(FH) Foot Height	(FW) Foot Width	(CD) Cone Dia- meter	(CH) Cone Height	(CR) Cone Bottom Radius		Trimmed Weight	Surface Design	Packing Unit
Passenger / Light Truck Tires																
AP 6 273	2013084	mm	273	1400	360	610	4.5	13.5	13.5	112	90	35	kg	5.7	1	50
		inch	10.7	55.1	14.2	24.0	0.2	0.5	0.5	4.4	3.5	1.4	lbs	12.6		
AP 6 K 273	2013085	mm	273	1400	360	610	4.5	13.5	13.5	112	Kobe	Kobe	kg	5.2	1	40
		inch	10.7	55.1	14.2	24.0	0.2	0.5	0.5	4.4	system	system	lbs	11.6		
AP 4 C 329	2013080	mm	329	1133	265	565	4.5	13.5	13.5	63	45	16	kg	4.3	1	50
		inch	13.0	44.6	10.4	22.2	0.2	0.5	0.5	2.5	1.8	0.6	lbs	9.4		
AP 4 329	2013081	mm	329	1133	265	565	4.5	13.5	13.5	112	90	35	kg	4.5	1	50
		inch	13.0	44.6	10.4	22.2	0.2	0.5	0.5	4.4	3.5	1.4	lbs	10.0		
AP 4 K 329	2013082	mm	329	1133	265	565	4.5	13.5	13.5	112	Kobe	Kobe	kg	4.4	1	50
		inch	13.0	44.6	10.4	22.2	0.2	0.5	0.5	4.4	system	system	lbs	9.7		
AP 5 C 329	2013146	mm	329	1245	297	570	4.3	13.5	13.5	63	45	16	kg	4.5	1	50
		inch	13.0	49.0	11.7	22.4	0.2	0.5	0.5	2.5	1.8	0.6	lbs	9.8		
AP 5 329	2013147	mm	329	1245	297	570	4.3	13.5	13.5	112	90	35	kg	4.9	1	30
		inch	13.0	49.0	11.7	22.4	0.2	0.5	0.5	4.4	3.5	1.4	lbs	10.7		
AP 5 K 329	2013148	mm	329	1245	297	570	4.3	13.5	13.5	112	Kobe	Kobe	kg	4.6	1	50
		inch	13.0	49.0	11.7	22.4	0.2	0.5	0.5	4.4	system	system	lbs	10.1		
AP 16-60-5 C	2017947	mm	329	1246	321	570	4.5	13.5	16.5	63	45	16	kg	4.9	4	50
		inch	13.0	49.1	12.6	22.4	0.2	0.5	0.6	2.5	1.8	0.6	lbs	10.7		
AP 16-50-3	2016051	mm	329	1286	321	610	4.5	13.5	13.5	63	45	16	kg	5.3	2	30
		inch	13.0	50.6	12.6	24.0	0.2	0.5	0.5	2.5	1.8	0.6	lbs	11.7		
AP 6 C 329	2013086	mm	329	1341	360	610	4.5	13.5	13.5	63	45	16	kg	5.2	1	50
		inch	13.0	52.8	14.2	24.0	0.2	0.5	0.5	2.5	1.8	0.6	lbs	11.5		
AP 6 329	2013087	mm	329	1341	360	610	4.5	13.5	13.5	112	90	35	kg	5.6	1	50
		inch	13.0	52.8	14.2	24.0	0.2	0.5	0.5	4.4	3.5	1.4	lbs	12.4		
AP 6 K 329	2013088	mm	329	1341	360	610	4.5	13.5	13.5	112	Kobe	Kobe	kg	5.2	1	50
		inch	13.0	52.8	14.2	24.0	0.2	0.5	0.5	4.4	system	system	lbs	11.5		

Truck Tires																
AP 20-1 A	2017921	mm	430	1516	323	788	7.0	20.5	22.5	112	90	35	kg	11.2	4	10
		inch	16.9	59.7	12.7	31.0	0.3	0.8	0.9	4.4	3.5	1.4	lbs	24.6		
AP 20-1 C	2017950	mm	430	1742	406	840	7.0	20.5	23.0	112	90	35	kg	14.7	4	10
		inch	16.9	68.6	16.0	33.1	0.3	0.8	0.9	4.4	3.5	1.4	lbs	32.3		
AP 20-2 C	2017933	mm	430	1800	406	887	7.0	20.5	23.0	112	90	35	kg	14.7	4	13
		inch	16.9	70.9	16.0	34.9	0.3	0.8	0.9	4.4	3.5	1.4	lbs	32.4		
AP 20-3 C NP	2017924	mm	430	1886	438	913	7.5	20.5	23.3	112	90	35	kg	16.6	1	8
		inch	16.9	74.3	17.3	35.9	0.3	0.8	0.9	4.4	3.5	1.4	lbs	36.6		

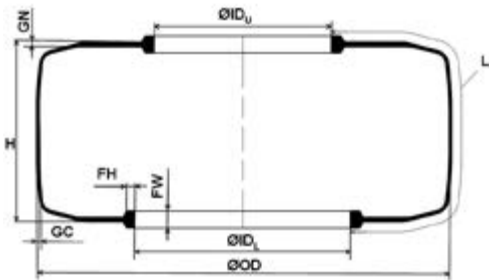
Hydraulic Type Bladders Application in Hydraulic Presses



Bladder Description	Article Number		(ID _U) Upper Foot ID	(ID _L) Lower Foot ID	(L) Length	(H) Height	(OD) Outside Diameter	(GC) Crown Gauge	(GN) Neck Gauge	(FH) Foot Height	(FW) Foot Width		Trimmed Weight	Surface Design	Packing Unit
Passenger / Light Truck Tires															
HEB 13 TM	2017051	mm inch	225 8.9	170 6.7	332 13.1	204 8.0	380 15.0	4.5 0.2	7.0 0.3	12.0 0.5	24.0 0.9	kg lbs	2.1 4.7	2	60
HEB 13-0 C NP	2013249	mm inch	225 8.9	170 6.7	388 15.3	237 9.3	420 16.5	4.5 0.2	7.0 0.3	12.0 0.5	24.0 0.9	kg lbs	2.6 5.7	1	100
TS 0 NP	2013061	mm inch	225 8.9	170 6.7	416 16.4	200 7.9	510 20.1	4.5 0.2	7.0 0.3	12.0 0.5	24.0 0.9	kg lbs	2.9 6.3	1	100
TS 1	2017043	mm inch	225 8.9	170 6.7	420 16.5	232 9.1	470 18.5	4.4 0.2	7.0 0.3	12.0 0.5	24.0 0.9	kg lbs	2.9 6.3	3	100
HEB 13-2 C NP	2013207	mm inch	225 8.9	170 6.7	430 16.9	274 10.8	460 18.1	4.5 0.2	7.0 0.3	12.0 0.5	24.0 0.9	kg lbs	2.9 6.4	1	100
VHL 13-7	2013059	mm inch	225 8.9	170 6.7	445 17.5	247 9.7	483 19.0	4.4 0.2	7.0 0.3	11.0 0.4	23.0 0.9	kg lbs	3.1 6.8	3	100
TS 2 C NP	2013241	mm inch	225 8.9	170 6.7	458 18.0	263 10.4	490 19.3	4.5 0.2	7.0 0.3	12.0 0.5	24.0 0.9	kg lbs	3.1 6.7	1	100
HEB 13-3 A	2017038	mm inch	225 8.9	170 6.7	462 18.2	270 10.6	490 19.3	5.0 0.2	7.0 0.3	12.0 0.5	24.0 0.9	kg lbs	3.4 7.6	2	100
TU 3	2013150	mm inch	225 8.9	170 6.7	485 19.1	236 9.3	500 19.7	4.3 0.2	7.0 0.3	12.0 0.5	24.0 0.9	kg lbs	3.3 7.3	1.1	80
TS 3 C NP	2013178	mm inch	225 8.9	170 6.7	485 19.1	286 11.3	500 19.7	4.5 0.2	7.0 0.3	12.0 0.5	24.0 0.9	kg lbs	3.4 7.5	1	100
HEB 13-5 C NP	2013251	mm inch	225 8.9	170 6.7	512 20.2	306 12.0	506 19.9	4.5 0.2	7.0 0.3	12.0 0.5	24.0 0.9	kg lbs	3.4 7.6	1	100
VHL 16-2	2013052	mm inch	225 8.9	170 6.7	515 20.3	300 11.8	510 20.1	4.3 0.2	7.0 0.3	11.0 0.4	23.0 0.9	kg lbs	3.7 8.2	3	100
TU 4	2013133	mm inch	225 8.9	170 6.7	529 20.8	263 10.4	520 20.5	4.3 0.2	7.0 0.3	12.0 0.5	24.0 0.9	kg lbs	4.2 9.2	1	80
TS 4 NP	2013060	mm inch	225 8.9	170 6.7	530 20.9	316 12.4	520 20.5	4.5 0.2	7.0 0.3	12.0 0.5	24.0 0.9	kg lbs	3.7 8.1	1	100
TU 4 V1	2013233	mm inch	225 8.9	170 6.7	553 21.8	287 11.3	520 20.5	4.3 0.2	7.0 0.3	12.0 0.5	24.0 0.9	kg lbs	4.2 9.3	1	80
TU 5 225	2013119	mm inch	225 8.9	170 6.7	552 21.7	244 9.6	550 21.7	4.3 0.2	7.0 0.3	12.0 0.5	24.0 0.9	kg lbs	4.5 9.8	1	80
TU 5 V1 225	2013123	mm inch	225 8.9	170 6.7	576 22.7	268 10.6	550 21.7	4.3 0.2	7.0 0.3	12.0 0.5	24.0 0.9	kg lbs	4.6 10.2	1	60
TS 5 NP	2013002	mm inch	276 10.9	225 8.9	496 19.5	308 12.1	550 21.7	4.5 0.2	7.0 0.3	12.0 0.5	24.0 0.9	kg lbs	3.8 8.4	1	80
TS 5 L	2017503	mm inch	276 10.9	225 8.9	496 19.5	308 12.1	550 21.7	6.2 0.2	7.0 0.3	12.0 0.5	24.0 0.9	kg lbs	5.0 10.9	2	45
TU 5	2013066	mm inch	276 10.9	225 8.9	499 19.6	244 9.6	550 21.7	4.3 0.2	7.0 0.3	12.0 0.5	24.0 0.9	kg lbs	4.3 9.5	1	80
TS 5 V1 NP	2013004	mm inch	276 10.9	225 8.9	520 20.5	332 13.1	550 21.7	4.5 0.2	7.0 0.3	12.0 0.5	24.0 0.9	kg lbs	4.2 9.3	1	80
TU 5 V1	2013068	mm inch	276 10.9	225 8.9	523 20.6	268 10.6	550 21.7	4.3 0.2	7.0 0.3	12.0 0.5	24.0 0.9	kg lbs	4.5 9.9	1	60

Bladder Description	Article Number		(ID _U) Upper Foot ID	(ID _L) Lower Foot ID	(L) Length	(H) Height	(OD) Outside Diameter	(GC) Crown Gauge	(GN) Neck Gauge	(FH) Foot Height	(FW) Foot Width		Trimmed Weight	Surface Design	Packing Unit
Passenger / Light Truck Tires															
TS 6 NP	2017072	mm	276	225	532	288	570	4.5	7.0	12.0	24.0	kg	4.5	1	50
		inch	10.9	8.9	20.9	11.3	22.4	0.2	0.3	0.5	0.9	lbs	9.9		
TU 6	2013093	mm	276	225	532	263	570	4.3	7.0	12.0	24.0	kg	4.7	1	60
		inch	10.9	8.9	20.9	10.4	22.4	0.2	0.3	0.5	0.9	lbs	10.3		
TS 6 L	2017502	mm	276	225	532	288	570	5.6	7.0	12.0	24.0	kg	5.4	3	60
		inch	10.9	8.9	20.9	11.3	22.4	0.2	0.3	0.5	0.9	lbs	11.8		
TS 6-5	2017090	mm	276	225	552	346	530	4.4	7.0	12.0	24.0	kg	4.3	2	60
		inch	10.9	8.9	21.7	13.6	20.9	0.2	0.3	0.5	0.9	lbs	9.5		
TS 6 V0 NP	2013028	mm	276	225	562	310	570	4.5	7.0	12.0	24.0	kg	4.8	1	50
		inch	10.9	8.9	22.1	12.2	22.4	0.2	0.3	0.5	0.9	lbs	10.6		
TU 7	2013091	mm	276	225	570	279	600	4.3	7.0	12.0	24.0	kg	5.2	1	50
		inch	10.9	8.9	22.4	11.0	23.6	0.2	0.3	0.5	0.9	lbs	11.5		
TU 6 V0	2013129	mm	276	225	572	303	570	4.3	7.0	12.0	24.0	kg	5.1	1	45
		inch	10.9	8.9	22.5	11.9	22.4	0.2	0.3	0.5	0.9	lbs	11.2		
TS 7 NP	2013034	mm	276	225	573	336	600	4.4	7.0	12.0	24.0	kg	4.7	1	50
		inch	10.9	8.9	22.6	13.2	23.6	0.2	0.3	0.5	0.9	lbs	10.4		
TS 7 L	2017504	mm	276	225	575	336	600	5.8	7.0	12.0	24.0	kg	6.0	3	60
		inch	10.9	8.9	22.6	13.2	23.6	0.2	0.3	0.5	0.9	lbs	13.2		
TS 6 V1 NP	2013183	mm	276	225	592	348	570	4.5	7.0	12.0	24.0	kg	5.2	1	45
		inch	10.9	8.9	23.3	13.7	22.4	0.2	0.3	0.5	0.9	lbs	11.5		
TU 6 V1	2013094	mm	276	225	592	323	570	4.3	7.0	12.0	24.0	kg	5.7	1	45
		inch	10.9	8.9	23.3	12.7	22.4	0.2	0.3	0.5	0.9	lbs	12.7		
TS 7 V1 NP	2013035	mm	276	225	597	360	600	4.4	7.0	12.0	24.0	kg	5.2	1	40
		inch	10.9	8.9	23.5	14.2	23.6	0.2	0.3	0.5	0.9	lbs	11.4		
TU 7 V1	2013092	mm	276	225	594	303	600	4.3	7.0	12.0	24.0	kg	5.4	1	40
		inch	10.9	8.9	23.4	11.9	23.6	0.2	0.3	0.5	0.9	lbs	12.0		
TS 8 C NP	2013239	mm	276	225	612	311	660	4.5	7.0	12.0	24.0	kg	5.5	1	50
		inch	10.9	8.9	24.1	12.2	26.0	0.2	0.3	0.5	0.9	lbs	12.1		
TS 8 L NP	2013141	mm	276	225	612	311	660	6.0	7.0	12.0	24.0	kg	6.9	1	50
		inch	10.9	8.9	24.1	12.2	26.0	0.2	0.3	0.5	0.9	lbs	15.1		
TS 10 C	2013228	mm	276	225	626	369	600	4.5	7.0	12.0	24.0	kg	5.4	2	45
		inch	10.9	8.9	24.6	14.5	23.6	0.2	0.3	0.5	0.9	lbs	11.9		
TU 7-5	2013208	mm	276	225	653	348	630	4.3	7.0	12.0	24.0	kg	6.2	1	36
		inch	10.9	8.9	25.7	13.7	24.8	0.2	0.3	0.5	0.9	lbs	13.7		
TU 7-5 V1	2013209	mm	276	225	677	372	630	4.3	7.0	12.0	24.0	kg	6.6	1	30
		inch	10.9	8.9	26.7	14.6	24.8	0.2	0.3	0.5	0.9	lbs	14.6		
TS 8 C V1 NP	2013240	mm	276	225	682	381	660	4.5	7.0	12.0	24.0	kg	6.3	1	30
		inch	10.9	8.9	26.9	15.0	26.0	0.2	0.3	0.5	0.9	lbs	13.9		
TS 11	2017115	mm	276	225	706	362	690	4.0	7.0	12.0	24.0	kg	6.1	1	30
		inch	10.9	8.9	27.8	14.3	27.2	0.2	0.3	0.5	0.9	lbs	13.4		
TU 11	2013184	mm	276	225	705.5	354	690	4.3	7.0	12.0	24.0	kg	7.0	1	30
		inch	10.9	8.9	27.8	13.9	27.2	0.2	0.3	0.5	0.9	lbs	15.4		
TU 11 V1	2013185	mm	276	225	766	414	690	4.3	7.0	12.0	24.0	kg	7.6	1	30
		inch	10.9	8.9	30.2	16.3	27.2	0.2	0.3	0.5	0.9	lbs	16.8		

Hydraulic Type Bladders Application in Hydraulic Presses



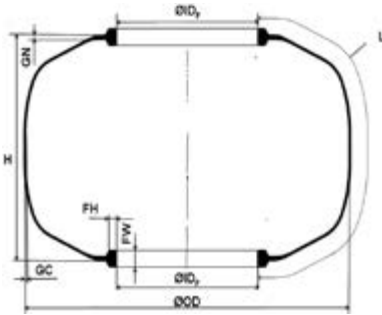
Bladder Description	Article Number		(ID _U) Upper Foot ID	(ID _L) Lower Foot ID	(L) Length	(H) Height	(OD) Outside Diameter	(GC) Crown Gauge	(GN) Neck Gauge	(FH) Foot Height	(FW) Foot Width		Trimmed Weight	Surface Design	Packing Unit
Truck Tires															
HEB 20-0	2017111	mm	355	290	556	304	680	7.5	10.0	15.0	28.0	kg	8.4	4	16
		inch	14.0	11.4	21.9	12.0	26.8	0.3	0.4	0.6	1.1	lbs	18.5		
HEB 20-2	2013112	mm	355	290	634	322	730	7.5	10.0	15.0	28.0	kg	10.8	1	15
		inch	14.0	11.4	25.0	12.7	28.7	0.3	0.4	0.6	1.1	lbs	23.8		
HEB 20-3 NP	2017067	mm	355	290	688	399	780	7.5	10.0	15.0	28.0	kg	11.2	1	15
		inch	14.0	11.4	27.1	15.7	30.7	0.3	0.4	0.6	1.1	lbs	24.6		
HEB 20-2 V1	2013113	mm	355	290	694	382	730	7.5	10.0	15.0	28.0	kg	12.0	1	15
		inch	14.0	11.4	27.3	15.0	28.7	0.3	0.4	0.6	1.1	lbs	26.5		
HEB 20-3 V1 NP	2017101	mm	355	290	748	459	780	7.5	10.0	15.0	28.0	kg	12.2	1	15
		inch	14.0	11.4	29.4	18.1	30.7	0.3	0.4	0.6	1.1	lbs	26.9		
HEB 20-6 NP	2017036	mm	355	290	782	418	870	7.5	10.0	15.0	28.0	kg	13.8	1	13
		inch	14.0	11.4	30.8	16.5	34.3	0.3	0.4	0.6	1.1	lbs	30.4		
HEB 20-4	2017073	mm	355	290	800	536	740	7.5	10.0	15.0	28.0	kg	12.8	2	10
		inch	14.0	11.4	31.5	21.1	29.1	0.3	0.4	0.6	1.1	lbs	28.1		
HEB 20-6 V1 NP	2017625	mm	355	290	842	478	870	7.5	10.0	15.0	28.0	kg	14.8	1	10
		inch	14.0	11.4	33.1	18.8	34.3	0.3	0.4	0.6	1.1	lbs	32.7		
HEB 20-8 NP	2013044	mm	355	290	862	530	900	7.5	10.0	15.0	28.0	kg	15.3	1	13
		inch	14.0	11.4	33.9	20.9	35.4	0.3	0.4	0.6	1.1	lbs	33.7		
HEB 20-5	2017092	mm	355	290	882	564	840	7.5	10.0	15.0	28.0	kg	15.6	2	10
		inch	14.0	11.4	34.7	22.2	33.1	0.3	0.4	0.6	1.1	lbs	34.4		
HEB 20-8 V1 NP	2013045	mm	355	290	912	580	900	7.5	10.0	15.0	28.0	kg	15.7	1	10
		inch	14.0	11.4	35.9	22.8	35.4	0.3	0.4	0.6	1.1	lbs	34.6		
HEB 20-9	2017112	mm	355	290	934	608	850	7.5	10.0	15.0	28.0	kg	17.8	2	8
		inch	14.0	11.4	36.8	23.9	33.5	0.3	0.4	0.6	1.1	lbs	38.4		
HEB 20-8 V2 NP	2013046	mm	355	290	962	630	900	7.5	10.0	15.0	28.0	kg	17.9	1	8
		inch	14.0	11.4	37.9	24.8	35.4	0.3	0.4	0.6	1.1	lbs	39.4		
HEB 20-10	2017134	mm	355	290	1064	690	930	7.5	10.0	15.0	28.0	kg	20.2	2	4
		inch	14.0	11.4	41.9	27.2	36.6	0.3	0.4	0.6	1.1	lbs	44.4		



13

rep

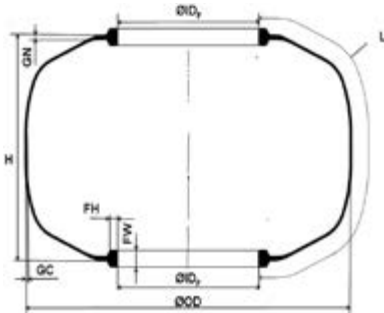
BOM Type Bladders Application in Bagomatic Presses



Bladder Description	Article Number		(ID _F) Foot ID	(L) Length	(H) Height	(OD) Outside Diameter	(GC) Crown Gauge	(GN) Neck Gauge	(FH) Foot Height	(FW) Foot Width		Trimmed Weight	Surface Design	Packing Unit	
Passenger / Light Truck Tires Radial															
RP 10-1 D	2017002	mm	158	358	265	320	4.5	6.0	11.0	21.0	kg	1.7	3	50	
		inch	6.2	14.1	10.4	12.6	0.2	0.2	0.4	0.8	lbs	3.7			
RP 10-3	2017001	mm	170	426	315	400	4.5	6.0	9.0	16.0	kg	2.1	3	50	
		inch	6.7	16.8	12.4	15.7	0.2	0.2	0.4	0.6	lbs	4.7			
RP 12-1 D	2017005	mm	207	370	227	420	4.5	7.0	11.0	23.0	kg	2.4	3	50	
		inch	8.1	14.6	8.9	16.5	0.2	0.3	0.4	0.9	lbs	5.3			
RP 13 TM	2017052	mm	225	304	204	380	4.5	7.0	12.0	24.0	kg	2.0	3	60	
		inch	8.9	12.0	8.0	15.0	0.2	0.3	0.5	0.9	lbs	4.4			
B 13-0 C NP	2013250	mm	225	360	237	420	4.5	7.0	12.0	24.0	kg	2.5	1	100	
		inch	8.9	14.2	9.3	16.5	0.2	0.3	0.5	0.9	lbs	5.5			
B 0 NP	2013062	mm	225	388	200	510	4.5	7.0	12.0	24.0	kg	3.0	1	60	
		inch	8.9	15.3	7.9	20.1	0.2	0.3	0.5	0.9	lbs	6.6			
B 13-2 C NP	2013232	mm	225	403	274	460	4.5	7.0	12.0	24.0	kg	2.8	1	100	
		inch	8.9	15.8	10.8	18.1	0.2	0.3	0.5	0.9	lbs	6.2			
RP 13-2	2017074	mm	225	406	315	420	4.5	7.0	12.0	24.0	kg	2.7	5	90	
		inch	8.9	16.0	12.4	16.5	0.2	0.3	0.5	0.9	lbs	6.0			
RP 13-3	2017029	mm	225	430	312	413	4.7	7.0	12.0	23.5	kg	3.0	3	100	
		inch	8.9	16.9	12.3	16.3	0.2	0.3	0.5	0.9	lbs	6.5			
RP 13-4	2017007	mm	225	450	335	413	7.5	8.0	11.0	23.0	kg	4.4	4	20	
		inch	8.9	17.7	13.2	16.3	0.3	0.3	0.4	0.9	lbs	9.7			
RP 13-4 D NP	2017021	mm	225	458	347	430	4.5	7.0	12.0	24.0	kg	3.1	1	100	
		inch	8.9	18.0	13.7	16.9	0.2	0.3	0.5	0.9	lbs	6.8			
BU 3	2013151	mm	225	458	236	500	4.3	7.0	12.0	24.0	kg	3.3	1.1	80	
		inch	8.9	18.0	9.3	19.7	0.2	0.3	0.5	0.9	lbs	7.3			
B 3 C NP	2013179	mm	225	458	286	500	4.4	7.0	12.0	24.0	kg	3.9	1	80	
		inch	8.9	18.0	11.3	19.7	0.2	0.3	0.5	0.9	lbs	8.6			
RP 13-5	2017010	mm	225	480	335	450	6.0	8.0	12.5	23.5	kg	4.0	3	50	
		inch	8.9	18.9	13.2	17.7	0.2	0.3	0.5	0.9	lbs	8.9			
B 4 NP	2017110	mm	225	503	316	520	4.4	7.0	12.0	24.0	kg	3.6	1	80	
		inch	8.9	19.8	12.4	20.5	0.2	0.3	0.5	0.9	lbs	8.0			
BU 4	2013149	mm	225	502	263	520	4.3	7.0	12.0	24.0	kg	4.3	1	80	
		inch	8.9	19.8	10.4	20.5	0.2	0.3	0.5	0.9	lbs	9.6			
BU 4 V1	2013234	mm	225	526	287	520	4.3	7.0	12.0	24.0	kg	4.3	1	80	
		inch	8.9	20.7	11.3	20.5	0.2	0.3	0.5	0.9	lbs	9.6			
RP 13-7	2017013	mm	225	536	395	460	6.0	8.0	12.5	23.5	kg	4.6	3	40	
		inch	8.9	21.1	15.6	18.1	0.2	0.3	0.5	0.9	lbs	10.2			
RP 13-9	2017011	mm	225	607	490	467	7.2	7.2	12.5	23.5	kg	6.4	3	30	
		inch	8.9	23.9	19.3	18.4	0.3	0.3	0.5	0.9	lbs	14.2			
13-11.8 DK 38428	2014200	mm	238	343	223	419	4.4	6.4	12.7	24.5	kg	2.7	3	60	
		inch	9.4	13.5	8.8	16.5	0.2	0.3	0.5	1.0	lbs	5.9			
13-12.3 DK 36745	2014252	mm	238	356	215	465	4.4	6.4	12.7	24.0	kg	2.5	3	60	
		inch	9.4	14.0	8.5	18.3	0.2	0.3	0.5	0.9	lbs	5.6			
13-13.0 DK 59675	2014290	mm	238	374	235	450	4.4	6.4	12.7	24.5	kg	2.9	2	60	
		inch	9.4	14.7	9.3	17.7	0.2	0.3	0.5	1.0	lbs	6.5			
B 2 DK 238	2013136	mm	238	410	267	470	4.3	7.0	12.7	24.5	kg	3.1	1	100	
		inch	9.4	16.1	10.5	18.5	0.2	0.3	0.5	1.0	lbs	6.8			

Bladder Description	Article Number		(ID _p) Foot ID	(L) Length	(H) Height	(OD) Outside Diameter	(GC) Crown Gauge	(GN) Neck Gauge	(FH) Foot Height	(FW) Foot Width		Trimmed Weight	Surface Design	Packing Unit
Passenger / Light Truck Tires Radial														
BU 3 DK 251	2013152	mm	251	432	236	500	4.3	7.0	12.7	22.2	kg	3.3	1.1	50
		inch	9.9	17.0	9.3	19.7	0.2	0.3	0.5	0.9	lbs	7.3		
BU 4 DK 251	2013134	mm	251	476	263	520	4.3	7.0	12.7	22.2	kg	3.9	1	60
		inch	9.9	18.7	10.4	20.5	0.2	0.3	0.5	0.9	lbs	8.6		
BU 4 DK 276	2013135	mm	276	451	263	520	4.3	7.0	12.7	22.2	kg	3.8	1	60
		inch	10.9	17.8	10.4	20.5	0.2	0.3	0.5	0.9	lbs	8.3		
B 5 NP	2013003	mm	276	470	308	550	4.5	7.0	12.0	24.0	kg	4.0	1	80
		inch	10.9	18.5	12.1	21.7	0.2	0.3	0.5	0.9	lbs	8.8		
BU 5	2013067	mm	276	474	244	550	4.3	7.0	12.0	24.0	kg	4.1	1	80
		inch	10.9	18.6	9.6	21.7	0.2	0.3	0.5	0.9	lbs	9.1		
BU 5 DK	2013137	mm	276	474	244	550	4.3	7.0	12.7	22.2	kg	4.1	1	80
		inch	10.9	18.6	9.6	21.7	0.2	0.3	0.5	0.9	lbs	9.0		
B 5 V1 NP	2013005	mm	276	494	332	550	4.5	7.0	12.0	24.0	kg	4.1	1	80
		inch	10.9	19.4	13.1	21.7	0.2	0.3	0.5	0.9	lbs	9.0		
BU 5 V1	2013069	mm	276	498	268	550	4.3	7.0	12.0	24.0	kg	4.4	1	80
		inch	10.9	19.6	10.6	21.7	0.2	0.3	0.5	0.9	lbs	9.6		
BU 5 DK V1	2013138	mm	276	498	268	550	4.3	7.0	12.7	22.2	kg	4.3	1	80
		inch	10.9	19.6	10.6	21.7	0.2	0.3	0.5	0.9	lbs	9.4		
BU 6 DK	2013130	mm	276	506	263	570	4.3	7.0	12.7	22.2	kg	4.5	1	60
		inch	10.9	19.9	10.4	22.4	0.2	0.3	0.5	0.9	lbs	9.8		
BU 6 DK V0	2013131	mm	276	546	303	570	4.3	7.0	12.7	22.2	kg	5.1	1	60
		inch	10.9	21.5	11.9	22.4	0.2	0.3	0.5	0.9	lbs	11.2		
BU 7 DK	2013186	mm	276	545	279	600	4.3	7.0	12.7	22.2	kg	4.5	1	60
		inch	10.9	21.5	11.0	23.6	0.2	0.3	0.5	0.9	lbs	9.9		
B 7 NP	2013036	mm	276	548	336	600	4.4	7.0	12.0	24.0	kg	4.6	1	40
		inch	10.9	21.6	13.2	23.6	0.2	0.3	0.5	0.9	lbs	10.1		
BU 7 DK V1	2013182	mm	276	569	303	600	4.3	7.0	12.7	22.2	kg	5.8	1	40
		inch	10.9	22.4	11.9	23.6	0.2	0.3	0.5	0.9	lbs	12.8		
B 7 V1 NP	2013037	mm	276	572	360	600	4.4	7.0	12.0	24.0	kg	5.2	1	30
		inch	10.9	22.5	14.2	23.6	0.2	0.3	0.5	0.9	lbs	11.4		
B 15-6	2017910	mm	276	582	449	550	5.7	7.0	12.0	24.0	kg	5.7	3	40
		inch	10.9	22.9	17.7	21.7	0.2	0.3	0.5	0.9	lbs	12.6		
B 8 C NP	2013237	mm	276	586	311	660	4.5	7.0	12.0	24.0	kg	5.4	1	40
		inch	10.9	23.1	12.2	26.0	0.2	0.3	0.5	0.9	lbs	11.9		
15-22.6 DK 36425	2014288	mm	276	621	426	605	6.4	6.4	12.7	22.2	kg	6.9	2	30
		inch	10.9	24.5	16.8	23.8	0.3	0.3	0.5	0.9	lbs	15.3		
B 8 C V1 NP	2013238	mm	276	656	381	660	4.5	7.0	12.0	24.0	kg	6.1	1	30
		inch	10.9	25.8	15.0	26.0	0.2	0.3	0.5	0.9	lbs	13.4		
B 15-8	2017079	mm	276	666	459	620	5.7	7.0	12.0	24.0	kg	7.4	2	20
		inch	10.9	26.2	18.1	24.4	0.2	0.3	0.5	0.9	lbs	16.2		
B 15-7 NP	2013025	mm	276	700	392	700	6.0	7.0	12.7	22.5	kg	7.8	1	30
		inch	10.9	27.6	15.4	27.6	0.2	0.3	0.5	0.9	lbs	17.2		
B 15-7 V1 NP	2013026	mm	276	820	512	700	6.0	7.0	12.7	22.5	kg	10.0	1	30
		inch	10.9	32.3	20.2	27.6	0.2	0.3	0.5	0.9	lbs	22.1		
BE 16-1	2017935	mm	287	455	347	570	5.7	9.5	12.5	17.5	kg	4.6	4	45
		inch	11.3	17.9	13.7	22.4	0.2	0.4	0.5	0.7	lbs	10.1		
BU 5 301	2013070	mm	301	449	244	550	4.3	7.0	12.0	24.0	kg	4.4	1	50
		inch	11.9	17.7	9.6	21.7	0.2	0.3	0.5	0.9	lbs	9.6		
BU 5 V1 301	2013072	mm	301	473	268	550	4.3	7.0	12.0	24.0	kg	4.2	1	45
		inch	11.9	18.6	10.6	21.7	0.2	0.3	0.5	0.9	lbs	9.3		
16-21.9 DK 65320	2014334	mm	302	604	366	620	5.8	6.4	12.7	22.2	kg	6.9	3	30
		inch	11.9	23.8	14.4	24.4	0.2	0.3	0.5	0.9	lbs	15.3		
BU 5 310	2013071	mm	310	440	244	550	4.3	7.0	12.0	24.0	kg	4.3	1	45
		inch	12.2	17.3	9.6	21.7	0.2	0.3	0.5	0.9	lbs	9.6		
BU 5 V1 310	2013073	mm	310	464	268	550	4.3	7.0	12.0	24.0	kg	4.4	1	45
		inch	12.2	18.2	10.6	21.7	0.2	0.3	0.5	0.9	lbs	9.8		
BU 6 310	2013095	mm	310	472	263	570	4.3	7.0	12.0	24.0	kg	4.4	1	60
		inch	12.2	18.6	10.4	22.4	0.2	0.3	0.5	0.9	lbs	9.7		
BU 6 V1 310	2013096	mm	310	532	323	570	4.3	7.0	12.0	24.0	kg	4.9	1	45
		inch	12.2	20.9	12.7	22.4	0.2	0.3	0.5	0.9	lbs	10.8		

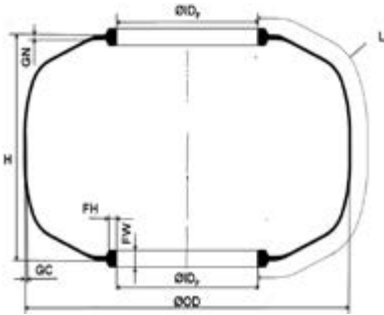
BOM Type Bladders Application in Bagomatic Presses



Bladder Description	Article Number		(ID) _f Foot ID	(L) Length	(H) Height	(OD) Outside Dia- meter	(GC) Crown Gauge	(GN) Neck Gauge	(FH) Foot Height	(FW) Foot Width		Trimmed Weight	Surface Design	Packing Unit
Passenger / Light Truck Tires Bias														
9-15.8 DK 4793	2014294	mm	140	436	367	298	6.4	9.5	12.7	23.8	kg	2.5	4	40
		inch	5.5	17.2	14.4	11.8	0.3	0.4	0.5	0.9	lbs	5.5		
10-14.6 DK 5484	2014211	mm	165	406	352	254	6.4	9.5	12.7	23.8	kg	2.7	2	50
		inch	6.5	16.0	13.9	10.0	0.3	0.4	0.5	0.9	lbs	6.0		
10-16.5 DK 4408	2014102	mm	165	453	392	302	6.4	9.5	12.7	23.8	kg	3.2	4	36
		inch	6.5	17.8	15.4	11.9	0.3	0.4	0.5	0.9	lbs	7.0		
10-19.8 DK 4374	2014179	mm	165	539	478	318	6.4	9.5	12.7	23.8	kg	3.7	4	25
		inch	6.5	21.2	18.8	12.5	0.3	0.4	0.5	0.9	lbs	8.2		
12-10.5 DK 4976	2014237	mm	216	302	244	295	6.4	11.9	12.7	25.4	kg	2.3	4	36
		inch	8.5	11.9	9.6	11.6	0.3	0.5	0.5	1.0	lbs	5.1		
12-12.2 DK 12099	2014168	mm	216	345	288	302	6.4	11.9	12.7	25.4	kg	2.7	2	40
		inch	8.5	13.6	11.3	11.9	0.3	0.5	0.5	1.0	lbs	6.0		
12-13.4 DK 34618	2014177	mm	216	374	317	295	6.4	11.9	12.7	25.4	kg	2.9	2	30
		inch	8.5	14.7	12.5	11.6	0.3	0.5	0.5	1.0	lbs	6.4		
12-16.2 DK 2767	2014145	mm	216	446	387	295	6.4	11.9	12.7	25.4	kg	3.4	4	30
		inch	8.5	17.6	15.3	11.6	0.3	0.5	0.5	1.0	lbs	7.5		
12-18.5 DK 4413	2014152	mm	216	505	444	343	6.4	11.9	12.7	25.4	kg	3.9	4	36
		inch	8.5	19.9	17.5	13.5	0.3	0.5	0.5	1.0	lbs	8.6		
12-26.0 DK 4319	2014165	mm	216	694	628	381	6.4	11.9	12.7	25.4	kg	5.6	4	36
		inch	8.5	27.3	24.7	15.0	0.3	0.5	0.5	1.0	lbs	12.3		
13-13.6 DK 4898	2014154	mm	238	370	337	329	6.4	11.9	12.7	25.4	kg	3.6	3	36
		inch	9.4	14.6	13.3	13.0	0.3	0.5	0.5	1.0	lbs	7.9		
13-14.9 DK 15060	2014110	mm	238	423	342	396	6.4	11.9	12.7	25.4	kg	3.9	2	40
		inch	9.4	16.7	13.5	15.6	0.3	0.5	0.5	1.0	lbs	8.7		
13-16.8 DK 4282	2014150	mm	238	472	406	329	6.4	11.9	12.7	25.4	kg	3.9	2	36
		inch	9.4	18.6	16.0	12.9	0.3	0.5	0.5	1.0	lbs	8.6		
14-9.2 DK 23986	2014193	mm	251	281	219	324	6.4	9.5	12.7	22.2	kg	2.3	2	36
		inch	9.9	11.1	8.6	12.8	0.3	0.4	0.5	0.9	lbs	5.1		
14-15.4 DK 32415	2014171	mm	251	438	358	401	6.0	9.5	12.7	22.2	kg	3.6	2	36
		inch	9.9	17.3	14.1	15.8	0.2	0.4	0.5	0.9	lbs	7.9		
14-15.8 DK 42758	2014256	mm	251	445	301	485	4.4	6.4	12.7	22.2	kg	3.4	3	60
		inch	9.9	17.5	11.9	19.1	0.2	0.3	0.5	0.9	lbs	7.5		

Bladder Description	Article Number		(ID _p) Foot ID	(L) Length	(H) Height	(OD) Outside Dia- meter	(GC) Crown Gauge	(GN) Neck Gauge	(FH) Foot Height	(FW) Foot Width		Trimmed Weight	Surface Design	Packing Unit
Passenger / Light Truck Tires Bias														
14-16.4 DK 29634	2014170	mm	251	463	381	419	6.4	9.5	12.7	22.2	kg	4.4	2	40
		inch	9.9	18.2	15.0	16.5	0.3	0.4	0.5	0.9	lbs	9.6		
14-17.5 DK 7585	2014105	mm	251	492	419	376	6.4	9.5	12.7	22.2	kg	4.8	2	40
		inch	9.9	19.4	16.5	14.8	0.3	0.4	0.5	0.9	lbs	10.6		
14-19.1 DK 12270	2014107	mm	251	532	457	376	6.4	9.5	12.7	22.2	kg	4.4	2	36
		inch	9.9	21.0	18.0	14.8	0.3	0.4	0.5	0.9	lbs	9.7		
14-21.3 DK 26260	2014121	mm	251	566	533	402	6.4	11.9	12.7	24.6	kg	5.9	3	20
		inch	9.9	22.3	21.0	15.8	0.3	0.5	0.5	1.0	lbs	13.0		
15-8.4 DK 21130	2014109	mm	276	262	200	349	6.4	9.5	12.7	19.1	kg	2.2	3	40
		inch	10.9	10.3	7.9	13.8	0.3	0.4	0.5	0.8	lbs	4.9		
15-11.8 DK 12123	2014207	mm	276	347	276	402	6.4	9.5	12.7	19.1	kg	3.1	2	40
		inch	10.9	13.7	10.9	15.8	0.3	0.4	0.5	0.8	lbs	6.9		
15-14.6 DK 12126	2014128	mm	276	418	346	402	6.4	9.5	12.7	19.1	kg	4.0	2	40
		inch	10.9	16.5	13.6	15.8	0.3	0.4	0.5	0.8	lbs	8.8		
15-17.6 DK 7804	2014162	mm	276	496	427	365	6.4	9.5	12.7	22.2	kg	4.5	2	20
		inch	10.9	19.5	16.8	14.4	0.3	0.4	0.5	0.9	lbs	9.9		
15-19.5 DK 2646	2014331	mm	276	543	473	402	6.4	9.5	12.7	22.2	kg	5.4	2	40
		inch	10.9	21.4	18.6	15.8	0.3	0.4	0.5	0.9	lbs	11.9		
15-22.4 DK 1282	2014130	mm	276	616	546	402	7.9	9.5	12.7	22.2	kg	7.4	2	20
		inch	10.9	24.3	21.5	15.8	0.3	0.4	0.5	0.9	lbs	16.3		
16-9.2 DK 20428	2014194	mm	302	282	216	381	6.4	9.5	12.7	22.2	kg	2.6	2	36
		inch	11.9	11.1	8.5	15.0	0.3	0.4	0.5	0.9	lbs	5.8		
16-16.7 DK 6954	2014104	mm	302	472	406	394	6.4	9.5	12.7	22.2	kg	5.0	2	40
		inch	11.9	18.6	16.0	15.5	0.3	0.4	0.5	0.9	lbs	11.0		
16-17.5 DK 27189	2014039	mm	302	491	368	508	7.9	9.5	12.7	22.2	kg	6.4	3	40
		inch	11.9	19.3	14.5	20.0	0.3	0.4	0.5	0.9	lbs	14.1		
16-19.3 DK 6931	2014103	mm	302	542	476	406	6.4	9.5	12.7	22.2	kg	5.7	2	20
		inch	11.9	21.4	18.8	16.0	0.3	0.4	0.5	0.9	lbs	12.6		
16-22.8 DK 8411	2014106	mm	302	626	562	394	6.4	9.5	12.7	22.2	kg	6.7	2	20
		inch	11.9	24.6	22.1	15.5	0.3	0.4	0.5	0.9	lbs	14.8		

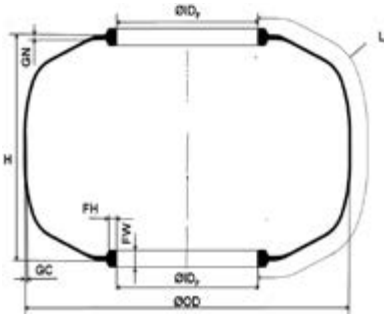
BOM Type Bladders Application in Bagomatic Presses



Bladder Description	Article Number		(ID) _f Foot ID	(L) Length	(H) Height	(OD) Outside Diameter	(GC) Crown Gauge	(GN) Neck Gauge	(FH) Foot Height	(FW) Foot Width		Trimmed Weight	Surface Design	Packing Unit
Truck Tires Radial														
B 20-0	2017104	mm	355	524	304	680	7.5	10.0	15.0	28.0	kg	8.1	4	16
		inch	14.0	20.6	12.0	26.8	0.3	0.4	0.6	1.1	lbs	17.9		
B 20-1	2017027	mm	355	558	338	700	7.0	10.0	15.0	27.0	kg	8.4	3	15
		inch	14.0	22.0	13.3	27.6	0.3	0.4	0.6	1.1	lbs	18.6		
B 20-1 V1	2017022	mm	355	608	388	700	7.0	10.0	15.0	27.0	kg	9.4	3	15
		inch	14.0	23.9	15.3	27.6	0.3	0.4	0.6	1.1	lbs	20.8		
RP 20-3	2017518	mm	355	632	500	630	8.0	10.0	15.0	27.0	kg	9.9	3	14
		inch	14.0	24.9	19.7	24.8	0.3	0.4	0.6	1.1	lbs	21.8		
B 20-2	2013114	mm	355	602	322	730	7.5	10.0	15.0	28.0	kg	10.2	1	15
		inch	14.0	23.7	12.7	28.7	0.3	0.4	0.6	1.1	lbs	22.4		
B 20-2 V1	2013115	mm	355	662	382	730	7.5	10.0	15.0	28.0	kg	11.6	1	15
		inch	14.0	26.1	15.0	28.7	0.3	0.4	0.6	1.1	lbs	25.6		
B 20-3 NP	2017070	mm	355	656	399	780	7.5	10.0	15.0	28.0	kg	10.8	1	15
		inch	14.0	25.8	15.7	30.7	0.3	0.4	0.6	1.1	lbs	23.8		
B 20-3 V1 NP	2017100	mm	355	716	459	780	7.5	10.0	15.0	28.0	kg	12.0	1	15
		inch	14.0	28.2	18.1	30.7	0.3	0.4	0.6	1.1	lbs	26.5		
B 20-6 NP	2017023	mm	355	750	418	870	7.5	10.0	15.0	28.0	kg	13.7	1	13
		inch	14.0	29.5	16.5	34.3	0.3	0.4	0.6	1.1	lbs	30.3		
RP 20-5	2017521	mm	355	750	603	673	8.0	10.0	15.0	27.0	kg	12.0	3	12
		inch	14.0	29.5	23.7	26.5	0.3	0.4	0.6	1.1	lbs	26.5		
B 20-4	2017081	mm	355	768	536	740	7.5	10.0	15.0	28.0	kg	12.5	2	8
		inch	14.0	30.2	21.1	29.1	0.3	0.4	0.6	1.1	lbs	27.4		
B 20-6 V1 NP	2017080	mm	355	810	478	870	7.5	10.0	15.0	28.0	kg	15.1	1	10
		inch	14.0	31.9	18.8	34.3	0.3	0.4	0.6	1.1	lbs	33.2		
B 20-7 A	2017024	mm	355	810	602	800	7.5	11.0	15.0	28.0	kg	15.4	2	10
		inch	14.0	31.9	23.7	31.5	0.3	0.4	0.6	1.1	lbs	34.0		
B 20-8 NP	2013047	mm	355	830	530	900	7.5	10.0	15.0	28.0	kg	14.8	1	13
		inch	14.0	32.7	20.9	35.4	0.3	0.4	0.6	1.1	lbs	32.6		
B 20-5	2017093	mm	355	850	564	840	7.5	10.0	15.0	28.0	kg	15.4	2	10
		inch	14.0	33.5	22.2	33.1	0.3	0.4	0.6	1.1	lbs	34.0		
B 20-8 V1 NP	2013048	mm	355	880	580	900	7.5	10.0	15.0	28.0	kg	16.2	1	10
		inch	14.0	34.6	22.8	35.4	0.3	0.4	0.6	1.1	lbs	35.6		
B 20-9	2017087	mm	355	902	608	850	7.5	10.0	15.0	28.0	kg	17.0	2	6
		inch	14.0	35.5	23.9	33.5	0.3	0.4	0.6	1.1	lbs	37.5		
B 20-8 V2 NP	2013049	mm	355	930	630	900	7.5	10.0	15.0	28.0	kg	17.2	1	8
		inch	14.0	36.6	24.8	35.4	0.3	0.4	0.6	1.1	lbs	37.9		
B 20-10	2017086	mm	355	1032	690	930	7.5	10.0	15.0	28.0	kg	19.7	2	4
		inch	14.0	40.6	27.2	36.6	0.3	0.4	0.6	1.1	lbs	43.3		
20-26.5 DK 46666	2014261	mm	384	710	505	787	6.9	9.5	12.7	25.4	kg	14.2	3	10
		inch	15.1	27.9	19.9	31.0	0.3	0.4	0.5	1.0	lbs	31.3		

Bladder Description	Article Number		(ID _F) Foot ID	(L) Length	(H) Height	(OD) Outside Dia- meter	(GC) Crown Gauge	(GN) Neck Gauge	(FH) Foot Height	(FW) Foot Width		Trimmed Weight	Surface Design	Packing Unit
Truck Tires Bias														
19.5-30.3 DK 1478	2014138	mm	356	817	740	512	8.4	14.4	12.7	30.2	kg	15.4	2	15
		inch	14.0	32.2	29.1	20.2	0.3	0.6	0.5	1.2	lbs	34.0		
20-22.8 DK 46055	2014112	mm	384	616	524	584	7.9	12.7	12.7	28.6	kg	10.1	2	15
		inch	15.1	24.2	20.6	23.0	0.3	0.5	0.5	1.1	lbs	22.3		
20-24.0 R	2064086	mm	384	635	547	572	9.5	12.7	12.7	27.6	kg	12.1	4	10
		inch	15.1	25.0	21.5	22.5	0.4	0.5	0.5	1.1	lbs	26.7		
20-25.0 RT	2064543	mm	384	660	572	572	7.0	12.7	12.7	27.6	kg	14.2	4	10
		inch	15.1	26.0	22.5	22.5	0.3	0.5	0.5	1.1	lbs	31.3		
20-25.3 DK 4969	2014326	mm	384	679	606	572	7.9	12.7	12.7	28.6	kg	11.6	2	15
		inch	15.1	26.7	23.9	22.5	0.3	0.5	0.5	1.1	lbs	25.6		
20-26.0 RT	2064542	mm	384	686	597	572	7.0	12.7	12.7	27.6	kg	11.2	4	10
		inch	15.1	27.0	23.5	22.5	0.3	0.5	0.5	1.1	lbs	24.7		
20-26.0 R	2064087	mm	384	686	597	572	9.5	12.7	12.7	27.6	kg	13.0	4	10
		inch	15.1	27.0	23.5	22.5	0.4	0.5	0.5	1.1	lbs	28.5		
20-28.0 R	2064088	mm	384	737	647	572	9.5	12.7	12.7	27.6	kg	14.0	4	10
		inch	15.1	29.0	25.5	22.5	0.4	0.5	0.5	1.1	lbs	30.8		
14.00-20	2007034	mm	384	874	744	710	9.0	10.0	13.0	25.0	kg	18.9	4	10
		inch	15.1	34.4	29.3	28.0	0.4	0.4	0.5	1.0	lbs	41.7		
20-33.1 DK 3476	2014147	mm	384	888	803	597	7.9	12.7	12.7	28.6	kg	17.6	4	12
		inch	15.1	35.0	31.6	23.5	0.3	0.5	0.5	1.1	lbs	38.8		
20-37.4 DK 3330	2014210	mm	384	998	908	635	7.9	12.7	12.7	28.6	kg	17.7	4	12
		inch	15.1	39.3	35.8	25.0	0.3	0.5	0.5	1.1	lbs	39.0		
11-70-22.5	2007038	mm	422	624	526	655	11.0	12.0	13.0	26.0	kg	16.5	4	10
		inch	16.6	24.6	20.7	25.8	0.4	0.5	0.5	1.0	lbs	36.4		
295-70-22.5	2007037	mm	422	656	556	676	11.0	12.0	13.0	26.0	kg	16.7	4	10
		inch	16.6	25.8	21.9	26.6	0.4	0.5	0.5	1.0	lbs	36.8		
13-22.5	2007039	mm	422	756	628	740	12.0	12.0	13.0	26.0	kg	22.8	4	10
		inch	16.6	29.8	24.7	29.1	0.5	0.5	0.5	1.0	lbs	50.3		
15-22.5	2007057	mm	422	800	687	741	11.0	13.0	13.0	26.0	kg	22.3	4	not defined
		inch	16.6	31.5	27.0	29.2	0.4	0.5	0.5	1.0	lbs	49.2		
16-22.5	2007056	mm	422	852	717	773	11.0	13.0	13.0	26.0	kg	24.3	4	10
		inch	16.6	33.5	28.2	30.4	0.4	0.5	0.5	1.0	lbs	53.6		
22.5-34.8 DK 1443	2014133	mm	432	933	856	592	8.4	14.4	12.7	30.2	kg	19.6	2	12
		inch	17.0	36.7	33.7	23.3	0.3	0.6	0.5	1.2	lbs	43.2		
22.5-23.0 RT	2064110	mm	434	610	522	620	7.0	12.7	12.7	27.6	kg	10.8	4	10
		inch	17.1	24.0	20.6	24.4	0.3	0.5	0.5	1.1	lbs	23.8		

BOM Type Bladders Application in Bagomatic Presses

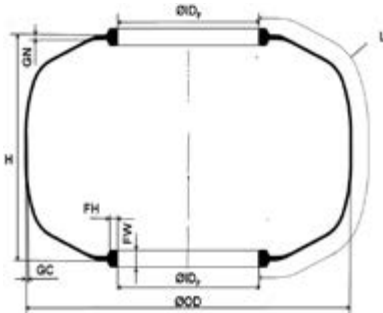


Bladder Description	Article Number		(ID ₁) Foot ID	(L) Length	(H) Height	(OD) Outside Diameter	(GC) Crown Gauge	(GN) Neck Gauge	(FH) Foot Height	(FW) Foot Width		Trimmed Weight	Surface Design	Packing Unit
OTR Tires Bias / Radial														
RP 26-3	2017056	mm	530	748	622	800	8.0	10.0	15.0	28.0	kg	15.6	4	5
		inch	20.9	29.4	24.5	31.5	0.3	0.4	0.6	1.1	lbs	34.4		
BOM 2607	2017053	mm	530	1120	1036	750	10.0	11.0	15.0	28.0	kg	26.6	4	5
		inch	20.9	44.1	40.8	29.5	0.4	0.4	0.6	1.1	lbs	58.6		
RP 30-3	2017057	mm	600	960	744	1060	8.0	10.0	15.0	28.0	kg	25.0	4	8
		inch	23.6	37.8	29.3	41.7	0.3	0.4	0.6	1.1	lbs	55.1		
RP 30-3 V1	2017076	mm	600	1260	1044	1060	8.0	10.0	15.0	28.0	kg	34.0	4	5
		inch	23.6	49.6	41.1	41.7	0.3	0.4	0.6	1.1	lbs	75.0		
RP 38-4	2017065	mm	838	892	750	1160	8.0	10.0	13.0	28.0	kg	25.9	4	4
		inch	33.0	35.1	29.5	45.7	0.3	0.4	0.5	1.1	lbs	57.0		
RP 38-4 V1	2017109	mm	838	1236	1094	1160	10.0	10.0	13.0	28.0	kg	45.5	4	4
		inch	33.0	48.7	43.1	45.7	0.4	0.4	0.5	1.1	lbs	100.3		



Bladder Description	Article Number		(ID _F) Foot ID	(L) Length	(H) Height	(OD) Outside Dia- meter	(GC) Crown Gauge	(GN) Neck Gauge	(FH) Foot Height	(FW) Foot Width		Trimmed Weight	Surface Design	Packing Unit
OTR Tires Bias														
20-33.5	2064117	mm	384	876	782	572	11.4	12.7	12.7	27.6	kg	18.5	4	4
		inch	15.1	34.5	30.8	22.5	0.4	0.5	0.5	1.1	lbs	40.8		
20-37.6	2064109	mm	384	980	890	630	12.0	12.7	12.7	27.6	kg	20.3	4	4
		inch	15.1	38.6	35.0	24.8	0.5	0.5	0.5	1.1	lbs	44.8		
23-39.8 H	2064119	mm	430	1036	1015	730	12.0	12.7	12.7	27.6	kg	29.7	4	10
		inch	16.9	40.8	40.0	28.7	0.5	0.5	0.5	1.1	lbs	65.5		
58	2016030	mm	442	790	510	880	14.0	14.0	16.0	34.0	kg	30.5	7	5
		inch	17.4	31.1	20.1	34.6	0.6	0.6	0.6	1.3	lbs	67.2		
58 A	2016056	mm	442	940	660	880	14.0	14.0	16.0	34.0	kg	36.2	7	5
		inch	17.4	37.0	26.0	34.6	0.6	0.6	0.6	1.3	lbs	79.8		
58 B	2016057	mm	442	1010	730	880	14.0	14.0	16.0	34.0	kg	39.5	7	5
		inch	17.4	39.8	28.7	34.6	0.6	0.6	0.6	1.3	lbs	87.1		
36 F	2016025	mm	444	568	404	654	12.0	12.0	16.0	28.0	kg	13.7	10	5
		inch	17.5	22.4	15.9	25.7	0.5	0.5	0.6	1.1	lbs	30.2		
36 A	2016022	mm	444	774	624	654	18.0	18.0	16.0	34.0	kg	31.4	10	2
		inch	17.5	30.5	24.6	25.7	0.7	0.7	0.6	1.3	lbs	69.2		
36 B	2016045	mm	444	874	724	654	18.0	18.0	16.0	34.0	kg	35.8	10	3
		inch	17.5	34.4	28.5	25.7	0.7	0.7	0.6	1.3	lbs	78.9		
36 C	2016023	mm	444	974	824	654	18.0	18.0	16.0	34.0	kg	39.0	10	3
		inch	17.5	38.3	32.4	25.7	0.7	0.7	0.6	1.3	lbs	86.0		
25-37.5	2064091	mm	465	985	884	760	16.0	20.0	16.0	35.0	kg	42.0	4	4
		inch	18.3	38.8	34.8	29.9	0.6	0.8	0.6	1.4	lbs	92.6		
25-39.3	2013216	mm	465	1031	884	850	16.0	20.0	16.0	38.0	kg	42.0	2	4
		inch	18.3	40.6	34.8	33.5	0.6	0.8	0.6	1.5	lbs	92.6		
25-42.5	2064092	mm	465	1112	976	760	16.0	20.0	16.0	35.0	kg	45.5	4	4
		inch	18.3	43.8	38.4	29.9	0.6	0.8	0.6	1.4	lbs	100.3		
25-44.5	2013221	mm	465	1162	1015	850	16.0	20.0	16.0	38.0	kg	45.5	2	4
		inch	18.3	45.7	40.0	33.5	0.6	0.8	0.6	1.5	lbs	100.3		
25-47.2	2013218	mm	465	1231	1084	850	16.0	20.0	16.0	38.0	kg	63.0	2	3
		inch	18.3	48.5	42.7	33.5	0.6	0.8	0.6	1.5	lbs	138.9		
25-49.5	2064093	mm	465	1289	1179	890	16.0	20.0	16.0	35.0	kg	63.0	4	3
		inch	18.3	50.8	46.4	35.0	0.6	0.8	0.6	1.4	lbs	138.9		
25-55.5	2064094	mm	465	1442	1314	900	16.0	20.0	16.0	38.0	kg	56.5	4	3
		inch	18.3	56.8	51.7	35.4	0.6	0.8	0.6	1.5	lbs	124.4		
24.5-25.1 DK 3737	2014148	mm	470	696	600	660	7.9	12.7	12.7	28.6	kg	13.3	4	15
		inch	18.5	27.4	23.6	26.0	0.3	0.5	0.5	1.1	lbs	29.3		
24-25-29.2 DK 3266	2014146	mm	470	800	689	711	9.5	12.7	12.7	28.6	kg	17.9	4	12
		inch	18.5	31.5	27.1	28.0	0.4	0.5	0.5	1.1	lbs	39.5		
24-23.0 DK 6700	2014158	mm	483	632	565	603	9.5	12.7	12.7	28.6	kg	15.9	2	12
		inch	19.0	24.9	22.3	23.8	0.4	0.5	0.5	1.1	lbs	35.1		

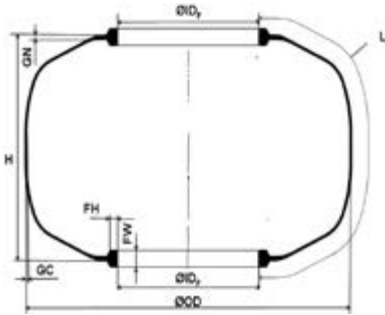
BOM Type Bladders Application in Bagomatic Presses



Bladder Description	Article Number		(ID _F) Foot ID	(L) Length	(H) Height	(OD) Outside Diameter	(GC) Crown Gauge	(GN) Neck Gauge	(FH) Foot Height	(FW) Foot Width		Trimmed Weight	Surface Design	Packing Unit	
OTR Tires Bias															
24-30.7	2064089	mm	484	808	710	690	11.5	12.7	12.7	27.6	kg	20.1	2	4	
		inch	19.1	31.8	28.0	27.2	0.5	0.5	0.5	1.1	lbs	44.3			
24-33.5	2064090	mm	485	880	780	690	11.5	12.7	12.7	27.6	kg	22.9	2	4	
		inch	19.1	34.6	30.7	27.2	0.5	0.5	0.5	1.1	lbs	50.5			
8-24	2007031	mm	488	480	397	656	12.0	10.0	12.0	26.0	kg	12.4	5	10	
		inch	19.2	18.9	15.6	25.8	0.5	0.4	0.5	1.0	lbs	27.3			
9-24	2007032	mm	488	550	467	656	12.0	10.0	12.0	26.0	kg	14.6	5	10	
		inch	19.2	21.7	18.4	25.8	0.5	0.4	0.5	1.0	lbs	32.2			
10-24	2007035	mm	488	607	507	700	12.0	10.0	12.0	26.0	kg	15.9	5	10	
		inch	19.2	23.9	20.0	27.6	0.5	0.4	0.5	1.0	lbs	35.1			
13-24	2007048	mm	488	802	717	718	13.0	10.0	12.0	26.0	kg	23.6	5	10	
		inch	19.2	31.6	28.2	28.3	0.5	0.4	0.5	1.0	lbs	52.0			
17.5-24	2007049	mm	488	905	807	718	14.0	10.0	12.0	26.0	kg	28.7	5	10	
		inch	19.2	35.6	31.8	28.3	0.6	0.4	0.5	1.0	lbs	63.3			
18.4-26	2007050	mm	536	966	867	800	13.0	13.0	13.2	25.5	kg	31.5	4	10	
		inch	21.1	38.0	34.1	31.5	0.5	0.5	0.5	1.0	lbs	69.4			
29-57.0	2064095	mm	546	1479	1306	813	19.1	15.8	15.9	30.8	kg	60.0	4	2	
		inch	21.5	58.2	51.4	32.0	0.8	0.6	0.6	1.2	lbs	132.3			
33-51.0	2064100	mm	572	1346	1116	914	15.9	23.4	25.4	50.8	kg	61.0	2	2	
		inch	22.5	53.0	43.9	36.0	0.6	0.9	1.0	2.0	lbs	134.5			
28-22.8 DK 6739	2014159	mm	584	627	549	686	9.5	12.7	12.7	28.6	kg	17.9	4	12	
		inch	23.0	24.7	21.6	27.0	0.4	0.5	0.5	1.1	lbs	39.4			
28-35.4	2064544	mm	584	927	870	711	9.5	12.7	12.7	28.6	kg	28.5	4	4	
		inch	23.0	36.5	34.3	28.0	0.4	0.5	0.5	1.1	lbs	62.8			
10-28	2007041	mm	589	616	537	769	12.0	9.5	12.0	26.0	kg	18.4	10	10	
		inch	23.2	24.3	21.1	30.3	0.5	0.4	0.5	1.0	lbs	40.6			
11-28	2007042	mm	589	709	628	801	15.7	11.7	12.0	26.0	kg	25.0	1	10	
		inch	23.2	27.9	24.7	31.5	0.6	0.5	0.5	1.0	lbs	55.1			
41	2016118	mm	589	774	670	820	18.0	18.0	15.0	40.0	kg	37.4	10	5	
		inch	23.2	30.5	26.4	32.3	0.7	0.7	0.6	1.6	lbs	82.5			
13-28	2007043	mm	589	809	728	801	15.7	11.7	12.0	26.0	kg	30.1	1	10	
		inch	23.2	31.9	28.7	31.5	0.6	0.5	0.5	1.0	lbs	66.4			
41 A	2016028	mm	589	880	776	820	18.0	18.0	15.0	40.0	kg	41.6	10	5	
		inch	23.2	34.6	30.6	32.3	0.7	0.7	0.6	1.6	lbs	91.7			
14-28	2007058	mm	589	904	821	820	15.0	10.5	12.0	26.0	kg	33.0	4	10	
		inch	23.2	35.6	32.3	32.3	0.6	0.4	0.5	1.0	lbs	72.8			
14-30	2007059	mm	589	954	871	820	15.0	10.0	12.0	26.0	kg	34.8	4	10	
		inch	23.2	37.6	34.3	32.3	0.6	0.4	0.5	1.0	lbs	76.7			
33-47.5	2013051	mm	665	1239	1114	980	16.0	16.0	16.0	32.0	kg	56.5	4	2	
		inch	26.2	48.8	43.9	38.6	0.6	0.6	0.6	1.3	lbs	124.6			

Bladder Description	Article Number		(ID _F) Foot ID	(L) Length	(H) Height	(OD) Outside Dia- meter	(GC) Crown Gauge	(GN) Neck Gauge	(FH) Foot Height	(FW) Foot Width		Trimmed Weight	Surface Design	Packing Unit
OTR Tires Bias														
9-32	2007051	mm	691	560	430	813	16.2	11.1	12.0	26.0	kg	21.5	4	10
		inch	27.2	22.0	16.9	32.0	0.6	0.4	0.5	1.0	lbs	47.4		
11-32	2007052	mm	691	680	613	813	16.2	11.1	12.0	26.0	kg	27.2	4	10
		inch	27.2	26.8	24.1	32.0	0.6	0.4	0.5	1.0	lbs	60.0		
34	2016060	mm	693	500	420	850	12.0	12.0	14.0	30.0	kg	18.6	7	5
		inch	27.3	19.7	16.5	33.5	0.5	0.5	0.6	1.2	lbs	41.0		
33 A	2016018	mm	693	822	751	860	16.0	16.0	14.0	30.0	kg	35.0	10	5
		inch	27.3	32.4	29.6	33.9	0.6	0.6	0.6	1.2	lbs	77.2		
14-34	2007061	mm	728	910	796	1020	15.0	11.0	13.0	27.0	kg	40.0	4	10
		inch	28.7	35.8	31.3	40.2	0.6	0.4	0.5	1.1	lbs	88.2		
15-34	2007062	mm	728	990	876	1020	15.0	11.0	13.0	27.0	kg	47.6	4	10
		inch	28.7	39.0	34.5	40.2	0.6	0.4	0.5	1.1	lbs	104.9		
39	2016054	mm	746	526	392	960	18.0	18.0	18.0	36.0	kg	31.2	10	5
		inch	29.4	20.7	15.4	37.8	0.7	0.7	0.7	1.4	lbs	68.8		
39 A	2016026	mm	746	566	432	960	18.0	18.0	18.0	36.0	kg	33.6	10	5
		inch	29.4	22.3	17.0	37.8	0.7	0.7	0.7	1.4	lbs	74.1		
39 B	2016053	mm	746	686	552	960	18.0	18.0	18.0	36.0	kg	39.3	10	5
		inch	29.4	27.0	21.7	37.8	0.7	0.7	0.7	1.4	lbs	86.6		
11-36	2007053	mm	780	656	553	1006	15.5	11.0	12.0	23.0	kg	30.7	4	10
		inch	30.7	25.8	21.8	39.6	0.6	0.4	0.5	0.9	lbs	67.7		
12-36	2007054	mm	780	716	613	1006	15.5	11.0	12.0	23.0	kg	33.0	4	10
		inch	30.7	28.2	24.1	39.6	0.6	0.4	0.5	0.9	lbs	72.8		
36-21.0 DK 6769	2014335	mm	787	581	505	889	9.5	12.7	12.7	28.6	kg	20.1	4	10
		inch	31.0	22.9	19.9	35.0	0.4	0.5	0.5	1.1	lbs	44.3		
11-38	2007074	mm	827	674	594	1000	12.0	10.0	12.0	26.0	kg	29.3	10	10
		inch	32.6	26.5	23.4	39.4	0.5	0.4	0.5	1.0	lbs	64.6		
12-38	2007060	mm	827	778	682	1046	13.5	10.0	12.0	26.0	kg	35.0	4	10
		inch	32.6	30.6	26.9	41.2	0.5	0.4	0.5	1.0	lbs	77.2		
14-38	2007063	mm	827	880	784	1046	13.5	10.0	12.0	26.0	kg	41.0	4	10
		inch	32.6	34.6	30.9	41.2	0.5	0.4	0.5	1.0	lbs	90.4		
18.4-38	2007055	mm	827	978	844	1150	13.0	10.0	12.0	26.0	kg	46.1	4	6
		inch	32.6	38.5	33.2	45.3	0.5	0.4	0.5	1.0	lbs	101.6		
20.8-38	2016307	mm	827	1088	954	1150	13.0	10.0	12.0	26.0	kg	53.4	4	6
		inch	32.6	42.8	37.6	45.3	0.5	0.4	0.5	1.0	lbs	117.7		
38-22.2 DK 6774	2014100	mm	838	605	537	927	9.5	12.7	12.7	28.6	kg	22.6	4	10
		inch	33.0	23.8	21.1	36.5	0.4	0.5	0.5	1.1	lbs	49.8		
49-63.0	2064101	mm	953	1651	1368	1524	15.9	22.2	15.2	38.1	kg	120.0	4	2
		inch	37.5	65.0	53.9	60.0	0.6	0.9	0.6	1.5	lbs	264.6		
51-71.0	2064114	mm	953	1860	1573	1524	19.1	23.4	25.4	50.8	kg	160.0	4	1
		inch	37.5	73.2	61.9	60.0	0.8	0.9	1.0	2.0	lbs	352.7		

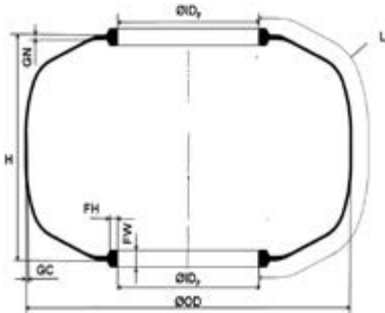
BOM Type Bladders Application in Bagomatic Presses



Bladder Description	Article Number		(ID) _f Foot ID	(L) Length	(H) Height	(OD) Outside Dia- meter	(GC) Crown Gauge	(GN) Neck Gauge	(FH) Foot Height	(FW) Foot Width		Trimmed Weight	Surface Design	Packing Unit
Kart / Wheelbarrow / Industrial / Farm Implement Tires														
BOM 411	2017833	mm	51	129	95	100	4.0	4.0	6.0	8.5	kg	0.2	3	50
		inch	2.0	5.1	3.7	3.9	0.2	0.2	0.2	0.3	lbs	0.5		
BOM 412	2017834	mm	51	155	118	116	5.0	5.0	8.0	14.0	kg	0.4	3	not defined
		inch	2.0	6.1	4.6	4.6	0.2	0.2	0.3	0.6	lbs	0.8		
BOM 414	2017801	mm	51	168	135	100	5.0	5.0	6.0	8.5	kg	0.3	3	50
		inch	2.0	6.6	5.3	3.9	0.2	0.2	0.2	0.3	lbs	0.7		
BOM 401	2017809	mm	51	210	170	130	5.9	5.9	7.0	14.0	kg	0.4	3	100
		inch	2.0	8.3	6.7	5.1	0.2	0.2	0.3	0.6	lbs	0.9		
BOM 406	2017862	mm	51	261	208	145	6.0	6.0	8.0	14.0	kg	0.6	6	not defined
		inch	2.0	10.3	8.2	5.7	0.2	0.2	0.3	0.6	lbs	1.3		
BOM 403	2017810	mm	51	270	230	130	5.9	5.9	7.0	14.0	kg	0.6	3	50
		inch	2.0	10.6	9.1	5.1	0.2	0.2	0.3	0.6	lbs	1.2		
BOM 407 V1	2017865	mm	51	347	297	150	6.0	6.0	8.0	14.0	kg	0.9	6	50
		inch	2.0	13.6	11.7	5.9	0.2	0.2	0.3	0.6	lbs	1.9		
BOM 404-220	2017811	mm	60	270	224	130	5.0	5.0	7.0	14.0	kg	0.5	4	50
		inch	2.4	10.6	8.8	5.1	0.2	0.2	0.3	0.6	lbs	1.2		
BOM 603	2017802	mm	95	273	218	180	6.0	6.0	9.0	17.0	kg	1.1	3	not defined
		inch	3.7	10.7	8.6	7.1	0.2	0.2	0.4	0.7	lbs	2.4		
BOM 803	2017806	mm	152	277	238	220	6.0	6.0	9.0	16.0	kg	1.2	3	50
		inch	6.0	10.9	9.4	8.7	0.2	0.2	0.4	0.6	lbs	2.6		
BOM 805	2017825	mm	152	342	302	240	6.0	6.0	9.0	17.0	kg	1.5	3	50
		inch	6.0	13.5	11.9	9.4	0.2	0.2	0.4	0.7	lbs	3.4		
BOM 1005	2017054	mm	152	365	290	280	8.0	8.0	11.0	22.0	kg	2.5	4	30
		inch	6.0	14.4	11.4	11.0	0.3	0.3	0.4	0.9	lbs	5.4		
BOM 1003	2017818	mm	158	325	255	260	7.6	7.6	11.0	21.0	kg	2.0	4	30
		inch	6.2	12.8	10.0	10.2	0.3	0.3	0.4	0.8	lbs	4.4		
BOM 1004	2017539	mm	158	374	305	260	5.0	7.0	11.0	21.0	kg	1.6	4	30
		inch	6.2	14.7	12.0	10.2	0.2	0.3	0.4	0.8	lbs	3.6		
BOM 1200	2017543	mm	207	258	200	285	8.0	8.0	11.0	23.0	kg	1.8	4	60
		inch	8.1	10.2	7.9	11.2	0.3	0.3	0.4	0.9	lbs	4.0		
BOM 1201	2017541	mm	207	325	226	309	7.3	7.0	11.0	23.0	kg	2.5	4	30
		inch	8.1	12.8	8.9	12.2	0.3	0.3	0.4	0.9	lbs	5.4		
BOM 1203 D	2017542	mm	207	386	313	311	5.0	6.3	11.0	23.0	kg	2.7	3	36
		inch	8.1	15.2	12.3	12.2	0.2	0.2	0.4	0.9	lbs	6.0		
BOM 1301	2017819	mm	225	386	305	351	7.0	7.0	11.0	23.0	kg	3.1	4	30
		inch	8.9	15.2	12.0	13.8	0.3	0.3	0.4	0.9	lbs	6.9		
BOM 1302 D	2017507	mm	225	412	323	351	4.5	8.0	11.0	23.0	kg	2.7	4	30
		inch	8.9	16.2	12.7	13.8	0.2	0.3	0.4	0.9	lbs	6.0		

Bladder Description	Article Number		(ID _F) Foot ID	(L) Length	(H) Height	(OD) Outside Dia- meter	(GC) Crown Gauge	(GN) Neck Gauge	(FH) Foot Height	(FW) Foot Width		Trimmed Weight	Surface Design	Packing Unit
Kart / Wheelbarrow / Industrial / Farm Implement Tires														
BOM 1310	2017512	mm	225	510	440	351	7.0	8.0	11.0	23.0	kg	4.5	4	15
		inch	8.9	20.1	17.3	13.8	0.3	0.3	0.4	0.9	lbs	10.0		
BOM 1502	2017514	mm	276	368	279	402	7.0	8.0	11.0	23.0	kg	3.5	4	32
		inch	10.9	14.5	11.0	15.8	0.3	0.3	0.4	0.9	lbs	7.7		
BOM 1504	2017116	mm	276	430	359	390	6.4	8.0	11.0	23.0	kg	3.8	4	10
		inch	10.9	16.9	14.1	15.4	0.3	0.3	0.4	0.9	lbs	8.3		
BOM 1507	2017517	mm	276	448	357	402	7.0	8.0	11.0	23.0	kg	4.1	4	21
		inch	10.9	17.6	14.1	15.8	0.3	0.3	0.4	0.9	lbs	9.0		
BOM 1508	Upon request	mm	276	460	387	380	7.0	8.0	11.0	23.0	kg	4.1	4	not defined
		inch	10.9	18.1	15.2	15.0	0.3	0.3	0.4	0.9	lbs	9.0		
BOM 1509	2017523	mm	276	470	379	390	6.8	8.0	11.0	23.0	kg	4.8	4	16
		inch	10.9	18.5	14.9	15.4	0.3	0.3	0.4	0.9	lbs	10.5		
BOM 1511	2017525	mm	276	480	393	402	7.0	8.0	12.5	23.5	kg	4.4	4	14
		inch	10.9	18.9	15.5	15.8	0.3	0.3	0.5	0.9	lbs	9.7		
BOM 1510	2017524	mm	276	486	415	402	7.0	8.0	11.0	23.0	kg	4.6	4	10
		inch	10.9	19.1	16.3	15.8	0.3	0.3	0.4	0.9	lbs	10.0		
BOM 1513	2017513	mm	276	492	417	422	7.0	8.0	11.0	23.0	kg	4.6	4	12
		inch	10.9	19.4	16.4	16.6	0.3	0.3	0.4	0.9	lbs	10.2		
BOM 1514	2017526	mm	276	515	426	437	8.0	8.0	11.0	23.0	kg	6.2	4	14
		inch	10.9	20.3	16.8	17.2	0.3	0.3	0.4	0.9	lbs	13.7		
BOM 1515	2017527	mm	276	542	454	437	8.0	8.0	11.0	23.0	kg	5.8	4	10
		inch	10.9	21.3	17.9	17.2	0.3	0.3	0.4	0.9	lbs	12.8		
BOM 1517	2017358	mm	276	620	530	437	8.0	8.0	11.0	23.0	kg	6.7	4	10
		inch	10.9	24.4	20.9	17.2	0.3	0.3	0.4	0.9	lbs	14.7		
6.00-16	2007013	mm	314	423	356	461	10.5	9.0	9.0	18.0	kg	5.4	4	10
		inch	12.4	16.7	14.0	18.1	0.4	0.4	0.4	0.7	lbs	11.8		
6.00-18	2007044	mm	314	485	418	461	10.5	9.0	9.0	18.0	kg	6.4	4	10
		inch	12.4	19.1	16.5	18.1	0.4	0.4	0.4	0.7	lbs	14.0		
BOM 1804	2017040	mm	318	635	524	530	8.0	8.0	12.5	25.0	kg	8.1	3	10
		inch	12.5	25.0	20.6	20.9	0.3	0.3	0.5	1.0	lbs	17.9		
BOM 1703	2017529	mm	325	432	354	460	6.2	8.0	11.0	23.0	kg	4.8	4	21
		inch	12.8	17.0	13.9	18.1	0.2	0.3	0.4	0.9	lbs	10.5		
6.50-20	2007014	mm	418	470	399	580	11.5	9.0	9.0	20.0	kg	9.0	4	10
		inch	16.5	18.5	15.7	22.8	0.5	0.4	0.4	0.8	lbs	19.8		
7.50-20	2007046	mm	418	520	449	580	11.5	9.0	9.0	20.0	kg	9.2	4	10
		inch	16.5	20.5	17.7	22.8	0.5	0.4	0.4	0.8	lbs	20.3		

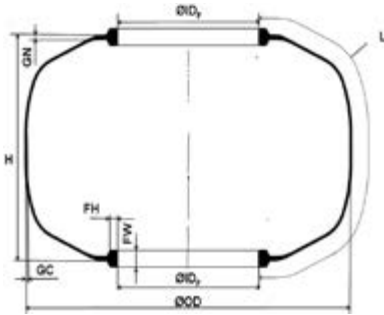
BOM Type Bladders Application in Bagomatic Presses



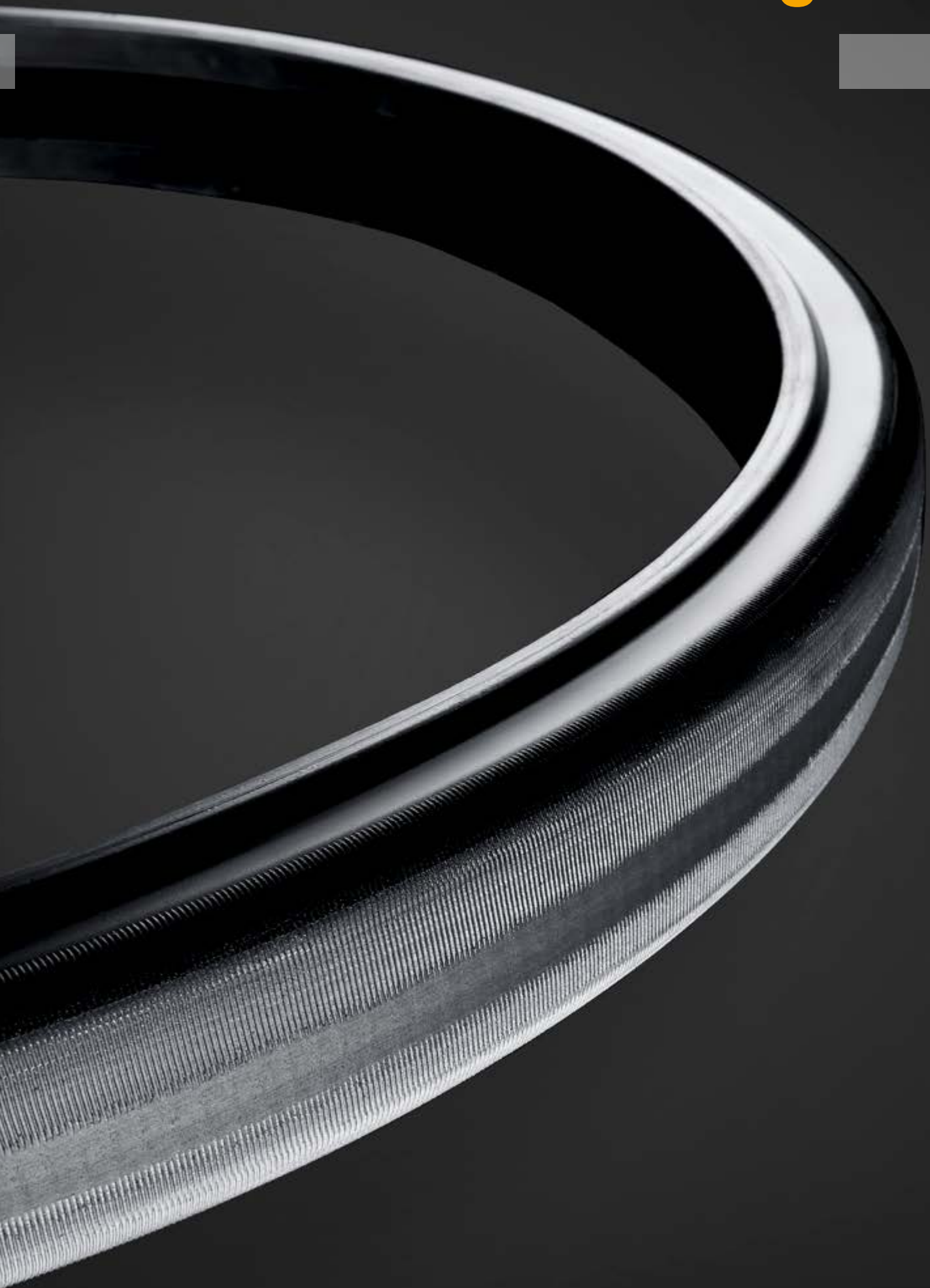
Bladder Description	Article Number		(ID) _f Foot ID	(L) Length	(H) Height	(OD) Outside Dia- meter	(GC) Crown Gauge	(GN) Neck Gauge	(FH) Foot Height	(FW) Foot Width		Trimmed Weight	Surface Design	Packing Unit	
Motorcycle Tires															
B O NP	2013062	mm	225	388	200	510	4.5	7.0	12.0	24.0	kg	3.0	1	60	
		inch	8.9	15.3	7.9	20.1	0.2	0.3	0.5	0.9	lbs	6.6			
BOM 1605	2017537	mm	341	227	185	417	5.0	5.0	8.0	14.5	kg	1.9	3	50	
		inch	13.4	8.9	7.3	16.4	0.2	0.2	0.3	0.6	lbs	4.2			
BOM 1600	2017506	mm	345	166	118	416	4.5	5.5	8.0	14.0	kg	1.1	3	50	
		inch	13.6	6.5	4.6	16.4	0.2	0.2	0.3	0.6	lbs	2.3			
17-7.2	2064083	mm	367	197	162	430	4.0	7.5	7.0	20.0	kg	1.8	3	120	
		inch	14.4	7.8	6.4	16.9	0.2	0.3	0.3	0.8	lbs	3.9			
BOM 1700	2017848	mm	369	165	118	440	4.5	5.5	8.0	14.0	kg	1.8	3	50	
		inch	14.5	6.5	4.6	17.3	0.2	0.2	0.3	0.6	lbs	3.9			
BOM 1704 E	2017538	mm	369	212	168	448	4.2	5.5	8.0	14.5	kg	1.6	3	50	
		inch	14.5	8.3	6.6	17.6	0.2	0.2	0.3	0.6	lbs	3.5			
BOM 1704	2017849	mm	369	215	168	453	3.6	5.5/6.3	8.0	15.0	kg	1.8	10	30	
		inch	14.5	8.5	6.6	17.8	0.1	0.2/3	0.3	0.6	lbs	3.9			
BOM 1805 E	2017805	mm	388	246	190	478	5.0	5.0	8.0	14.5	kg	2.2	3	50	
		inch	15.3	9.7	7.5	18.8	0.2	0.2	0.3	0.6	lbs	4.9			
BOM 1810 E	2017826	mm	388	288	232	481	6.0	6.0	8.0	16.5	kg	2.9	3	12	
		inch	15.3	11.3	9.1	18.9	0.2	0.2	0.3	0.6	lbs	6.5			
18-7.7	2064084	mm	392	210	173	455	6.0	7.5	7.0	20.0	kg	2.1	3	90	
		inch	15.4	8.3	6.8	17.9	0.2	0.3	0.3	0.8	lbs	4.6			
18-8.3	2064085	mm	392	225	188	455	6.0	7.5	7.0	20.0	kg	2.3	3	90	
		inch	15.4	8.9	7.4	17.9	0.2	0.3	0.3	0.8	lbs	5.1			
BOM 1900	2017850	mm	410	166	118	481	4.5	5.5	8.0	14.0	kg	1.6	3	50	
		inch	16.1	6.5	4.6	18.9	0.2	0.2	0.3	0.6	lbs	3.5			
BOM 1902	2017851	mm	421	188	139	498	4.5	5.5	8.0	13.5	kg	1.6	3	50	
		inch	16.6	7.4	5.5	19.6	0.2	0.2	0.3	0.5	lbs	3.6			
BOM 2203 SE	2017867	mm	498	162	118	569	4.5	5.5	8.0	14.0	kg	1.8	2	50	
		inch	19.6	6.4	4.6	22.4	0.2	0.2	0.3	0.6	lbs	3.9			



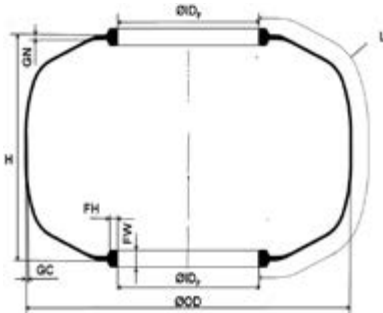
BOM Type Bladders Application in Bagomatic Presses



Bladder Description	Article Number		(ID) _f Foot ID	(L) Length	(H) Height	(OD) Outside Diameter	(GC) Crown Gauge	(GN) Neck Gauge	(FH) Foot Height	(FW) Foot Width		Trimmed Weight	Surface Design	Packing Unit
Bicycle Tires														
BOM Z 203-08	2017836	mm	149	165	118	219	3.5	5.5	8.0	14.0	kg	0.6	3	100
		inch	5.9	6.5	4.6	8.6	0.1	0.2	0.3	0.6	lbs	1.2		
BOM Z 305-05	2017837	mm	260	120	90	307	3.5	5.0	8.5	13.0	kg	0.6	3	50
		inch	10.2	4.7	3.5	12.1	0.1	0.2	0.3	0.5	lbs	1.4		
BOM Z 355-05	2017838	mm	310	120	90	357	3.5	5.0	8.5	13.0	kg	0.6	3	50
		inch	12.2	4.7	3.5	14.1	0.1	0.2	0.3	0.5	lbs	1.4		
BOM Z 406-06	2017820	mm	345	150	98	421	3.5	5.5/6.3	8.0	15/15.8	kg	1.3	3	25
		inch	13.6	5.9	3.9	16.6	0.1	0.2/0.25	0.3	0.6/0.6	lbs	2.8		
BOM Z 507-05	2017840	mm	445	142	90	520	3.5	5.5	8.0	14.0	kg	1.5	3	50
		inch	17.5	5.6	3.5	20.5	0.1	0.2	0.3	0.6	lbs	3.3		
BOM Z 540-03	2017839	mm	478	120	71	546	3.5	5.0	8.0	14.0	kg	0.9	3	50
		inch	18.8	4.7	2.8	21.5	0.1	0.2	0.3	0.6	lbs	1.9		
BOM Z 559-05	2017821	mm	490	142	89	561	3.5	5.5	8.5	14.5	kg	1.6	3	50
		inch	19.3	5.6	3.5	22.1	0.1	0.2	0.3	0.6	lbs	3.6		
BOM Z 584-02	2013224	mm	520	101	60	570	4.5	5.5	8.0	14.0	kg	1.1	2	50
		inch	20.5	4.0	2.4	22.4	0.2	0.2	0.3	0.6	lbs	2.4		
BOM Z 584	2013124	mm	520	164	118	594	4.5	5.5	8.0	14.0	kg	1.9	2	50
		inch	20.5	6.5	4.6	23.4	0.2	0.2	0.3	0.6	lbs	4.1		
BOM Z 584-04	2013227	mm	520	172	118	610	4.5	5.5	8.0	14.0	kg	1.9	1	50
		inch	20.5	6.8	4.6	24.0	0.2	0.2	0.3	0.6	lbs	4.1		
BOM Z 584-03	2013219	mm	520	183	133	596	4.5	5.5	8.0	14.0	kg	1.9	2	50
		inch	20.5	7.2	5.2	23.5	0.2	0.2	0.3	0.6	lbs	4.1		
BOM Z 590-03	2017841	mm	530	120	71	598	3.5	4.0	8.0	14/14.8	kg	1.4	3	50
		inch	20.9	4.7	2.8	23.5	0.1	0.2	0.3	0.6/0.6	lbs	3.0		
BOM Z 622-04	2017822	mm	555	134	84	625	3.5	5.5	8.5	14.5	kg	1.7	3	50
		inch	21.9	5.3	3.3	24.6	0.1	0.2	0.3	0.6	lbs	3.7		
BOM Z 622-06	2013126	mm	555	155	110	632	3.5	5.5	8.0	14.5	kg	1.7	2	50
		inch	21.9	6.1	4.3	24.9	0.1	0.2	0.3	0.6	lbs	3.6		
BOM Z 622-02	2017842	mm	565	98	50	620	3.5	5.0	7.5	14.5	kg	1.3	2	50
		inch	22.2	3.9	2.0	24.4	0.1	0.2	0.3	0.6	lbs	2.9		
BOM Z 622-01	2017803	mm	565	110	78	600	2.0	5.0	7.0	14.0	kg	1.1	2	50
		inch	22.2	4.3	3.1	23.6	0.1	0.2	0.3	0.6	lbs	2.4		
BOM Z 630-02	2017823	mm	565	111	64	627	3.5	5.5	7.0	14.0	kg	1.2	3	50
		inch	22.2	4.4	2.5	24.7	0.1	0.2	0.3	0.6	lbs	2.7		
BOM Z 635-04	2017843	mm	575	133	89	643	5.5	5.5	8.0	13.0	kg	1.7	3	50
		inch	22.6	5.2	3.5	25.3	0.2	0.2	0.3	0.5	lbs	3.7		
BOM Z 571-03	2013140	mm	575	146	99	648	5.5	5.5	8.0	13.0	kg	1.2	10	50
		inch	22.6	5.7	3.9	25.5	0.2	0.2	0.3	0.5	lbs	2.7		



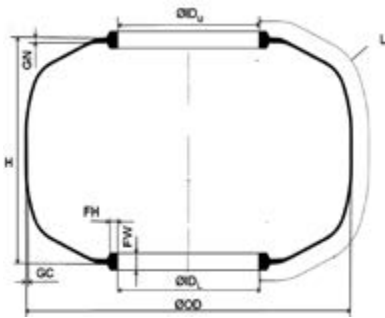
BOM Type Bladders Application in Bagomatic Presses



Bladder Description	Article Number		(ID _F) Foot ID	(L) Length	(H) Height	(OD) Outside Diameter	(GC) Crown Gauge	(GN) Neck Gauge	(FH) Foot Height	(FW) Foot Width		Trimmed Weight	Surface Design	Packing Unit
Air Springs														
BOM 404-220	2017811	mm	60	270	220	130	5.0	5.0	7.0	14.0	kg	0.5	4	50
		inch	2.4	10.6	8.7	5.1	0.2	0.2	0.3	0.6	lbs	1.2		
BOM 404-330	2017855	mm	60	372	324	130	5.0	5.0	7.0	14.0	kg	0.8	4	50
		inch	2.4	14.6	12.8	5.1	0.2	0.2	0.3	0.6	lbs	1.8		
BOM 505-310	2017812	mm	78	362	310	161	6.3	6.3	8.0	19.0	kg	1.1	4	100
		inch	3.1	14.3	12.2	6.3	0.2	0.2	0.3	0.7	lbs	2.4		
BOM 506-360	2017815	mm	78	394	360	140	6.5	6.5	8.0	19.0	kg	1.1	4	100
		inch	3.1	15.5	14.2	5.5	0.3	0.3	0.3	0.7	lbs	2.4		
BOM 505-360	2017813	mm	78	412	360	161	6.3	6.3	8.0	19.0	kg	1.2	4	90
		inch	3.1	16.2	14.2	6.3	0.2	0.2	0.3	0.7	lbs	2.7		
BOM 506-410	2017816	mm	78	444	410	140	6.5	6.5	8.0	19.0	kg	1.2	4	90
		inch	3.1	17.5	16.1	5.5	0.3	0.3	0.3	0.7	lbs	2.7		
BOM 505-410	2017814	mm	78	462	410	161	6.3	6.3	8.0	19.0	kg	1.5	4	75
		inch	3.1	18.2	16.1	6.3	0.2	0.2	0.3	0.7	lbs	3.2		
BOM 506-450	2013214	mm	78	487	450	140	6.3	6.3	8.0	19.0	kg	1.5	4	not defined
		inch	3.1	19.2	17.7	5.5	0.2	0.2	0.3	0.7	lbs	3.3		
BOM 507	2017059	mm	78	514	440	200	6.0	6.8	8.0	19.0	kg	1.7	4	50
		inch	3.1	20.2	17.3	7.9	0.2	0.3	0.3	0.7	lbs	3.7		
BOM 508	2017063	mm	78	562	500	170	6.0	6.8	8.0	19.0	kg	1.8	4	50
		inch	3.1	22.1	19.7	6.7	0.2	0.3	0.3	0.7	lbs	3.9		
BOM 506-580	2013215	mm	78	616	580	140	6.3	6.3	8.0	19.0	kg	2.1	4	not defined
		inch	3.1	24.3	22.8	5.5	0.2	0.2	0.3	0.7	lbs	4.6		
BOM 512	2017817	mm	120	404	360	200	6.7	6.7	8.0	19.0	kg	1.8	4	50
		inch	4.7	15.9	14.2	7.9	0.3	0.3	0.3	0.7	lbs	3.9		
BOM 510-370	2017058	mm	120	460	370	260	6.0	6.8	8.0	19.0	kg	2.1	4	40
		inch	4.7	18.1	14.6	10.2	0.2	0.3	0.3	0.7	lbs	4.7		
BOM 510-450	2013063	mm	120	485	450	260	6.0	6.8	8.0	19.0	kg	2.6	4	40
		inch	4.7	19.1	17.7	10.2	0.2	0.3	0.3	0.7	lbs	5.7		
BOM 510-510	2017055	mm	120	600	510	260	6.0	6.8	8.0	19.0	kg	3.0	4	36
		inch	4.7	23.6	20.1	10.2	0.2	0.3	0.3	0.7	lbs	6.6		
BOM 514	2017501	mm	120	652	600	197	6.0	6.8	8.0	19.0	kg	2.5	4	40
		inch	4.7	25.7	23.6	7.8	0.2	0.3	0.3	0.7	lbs	5.5		
F 68	2017060	mm	380	602	322	560	6.5	6.5	11.0	23.0	kg	6.1	4	12
		inch	15.0	23.7	12.7	22.0	0.3	0.3	0.4	0.9	lbs	13.4		



Bladders for Retreading



Bladder Description	Article Number		(ID _u) Upper Foot ID	(ID _l) Lower Foot ID	(L) Length	(H) Height	(OD) Outside Diameter	(GC) Crown Gauge	(GN) Neck Gauge	(FH) Foot Height	(FW) Foot Width		Trimmed Weight	Surface Design	Packing Unit
Retreading															
H 10	2017003	mm	160	160	465	405	250	8.0	8.0	10.0	21.0	kg	3.0	3	27
		inch	6.3	6.3	18.3	15.9	9.8	0.3	0.3	0.4	0.8	lbs	6.6		
BOM 1203 D	2017542	mm	207	207	386	313	311	5.0	6.3	11.0	23.0	kg	2.7	3	36
		inch	8.1	8.1	15.2	12.3	12.2	0.2	0.25	0.4	0.9	lbs	6.0		
RP 13-3 V	2017008	mm	225	225	430	312	413	8.0	8.0	11.0	21.0	kg	4.4	3	16
		inch	8.9	8.9	16.9	12.3	16.3	0.3	0.3	0.4	0.8	lbs	9.6		
RP 13-4	2017007	mm	225	225	450	335	413	8.0	8.0	11.0	23.0	kg	4.4	4	20
		inch	8.9	8.9	17.7	13.2	16.3	0.3	0.3	0.4	0.9	lbs	9.7		
RP 13-5	2017010	mm	225	225	480	335	450	6.0	8.0	12.5	23.5	kg	4.2	4	50
		inch	8.9	8.9	18.9	13.2	17.7	0.2	0.3	0.5	0.9	lbs	9.2		
BN 1	2017306	mm	225	200	495	416	351	7.0	8.0	13.0	19.0	kg	4.0	4	20
		inch	8.9	7.9	19.5	16.4	13.8	0.3	0.3	0.5	0.7	lbs	8.8		
RP 13-7	2017013	mm	225	225	536	395	460	6.0	8.0	12.5	23.5	kg	4.6	4	40
		inch	8.9	8.9	21.1	15.6	18.1	0.2	0.3	0.5	0.9	lbs	10.2		
RP 13-9	2017011	mm	225	225	607	490	467	7.2	7.2	12.5	23.5	kg	6.4	4	30
		inch	8.9	8.9	23.9	19.3	18.4	0.3	0.3	0.5	0.9	lbs	14.2		
BN 2	2017307	mm	250	225	680	508	400	7.0	8.0	13.0	19.0	kg	5.7	4	16
		inch	9.8	8.9	26.8	20.0	15.7	0.3	0.3	0.5	0.7	lbs	12.5		
BN 4	2017312	mm	373	277	930	832	537	11.0	11.0	15.5	30.0	kg	16.4	4	12
		inch	14.7	10.9	36.6	32.8	21.1	0.4	0.4	0.6	1.2	lbs	36.2		
RP 20-3	2017518	mm	355	355	632	500	630	8.0	10.0	15.0	27.0	kg	9.9	3	14
		inch	14.0	14.0	24.9	19.7	24.8	0.3	0.4	0.6	1.1	lbs	21.8		
RP 20-5	2017521	mm	355	355	750	603	673	8.0	10.0	15.0	27.0	kg	12.0	3	12
		inch	14.0	14.0	29.5	23.7	26.5	0.3	0.4	0.6	1.1	lbs	26.5		
20-26.5 DK 46666	2014261	mm	384	384	710	505	787	6.9	9.5	12.7	25.4	kg	14.2	3	10
		inch	15.1	15.1	27.9	19.9	31.0	0.3	0.4	0.5	1.0	lbs	31.3		
H 20-6	2017018	mm	385	385	746	535	810	9.0	11.0	13.0	25.5	kg	16.7	4	10
		inch	15.2	15.2	29.4	21.1	31.9	0.4	0.4	0.5	1.0	lbs	36.8		



Imprint

The content of this publication is provided for information only and without responsibility. Continental Reifen Deutschland GmbH makes no representations about the accuracy, reliability, completeness or timeliness of the information in this publication. Continental Reifen Deutschland GmbH may, in its sole discretion, revise the information contained herein at any time without notice.

Continental Reifen Deutschland GmbH's obligations and responsibilities regarding its products are governed solely by the agreements under which they are sold. Unless otherwise agreed in writing, the information contained herein does not become part of these agreements. This publication does not contain any guarantee or agreed quality of Continental Reifen Deutschland GmbH's products or any warranty of merchantability, fitness for a particular purpose and non-infringement. Continental Reifen Deutschland GmbH may make changes in the products or services described at any time without notice.

This publication is provided on an "as is" basis. To the extent permitted by law, Continental Reifen Deutschland GmbH makes no warranty, express or implied, and assumes no liability in connection with the use of the information contained in this publication. Continental Reifen Deutschland GmbH is not liable for any direct, indirect, incidental, consequential or punitive damages arising out of the use of this publication. Information contained herein is not intended to announce product availability anywhere in the world.

The trademarks, service marks and logos (the Trademarks) displayed in this publication are the property of Continental Reifen Deutschland GmbH and/or its affiliates. Nothing in this publication should be construed as granting any license or right to the Trademarks. Without the express written consent of Continental Reifen Deutschland GmbH the use of the Trademarks is prohibited.

All text, images, graphics and other materials in this publication are subject to the copyright and other intellectual property rights of Continental Reifen Deutschland GmbH and/or its affiliates. Continental Reifen Deutschland GmbH owns the copyrights in the selection, coordination and arrangement of the materials in this publication. These materials may not be modified or copied for commercial use or distribution.

Copyright © 2019 Continental Reifen Deutschland GmbH
All rights reserved.

A close-up, high-angle shot of a tire tread pattern, showing the intricate grooves and sipes. The lighting is dramatic, highlighting the texture of the rubber against a dark background. A small grey rectangular shape is visible in the top right corner.

Performance
is more than shape

www.conti-bladders.com
www.continental-corporation.com

 **ContiBladders**