

TECHNICAL INFORMATION & SERVICES



THE
PASADENA
CIVIC
Command the Best.

Built in 1931, the historic 2,986-seat Pasadena Civic Auditorium is one of the most revered performance halls in the nation. The Civic has played host to Broadway musicals, world class ballet, symphony orchestras and celebrity speakers as well as the Prime Time Emmy Awards, and the People's Choice Awards.

GENERAL INFORMATION:

Administration Phone.....626-793-2122
 Administration Fax.....626-793-8014
 Box Office Phone.....626-449-7360
 Box Office Fax.....626-395-7132
 Website thepasadenacivic.com
 E-mail boxoffice@thepasadneacivic.com
 Address 300 East Green Street
 Pasadena, CA 91101



The main floor of the Pasadena Civic has 1,852 fixed seats with 98 installable orchestra pit seats. The loge seats 560, the upper balcony seats 456 for a total capacity of 2,997.

Located on the second floor, the classic Gold Room provides an unforgettable setting for smaller meetings, receptions, or dinner parties of up to 300 guests.

The Pasadena Civic, as part of the Pasadena Center, is the perfect blend of the old and the new. It stands as a lasting symbol of the quality and beauty of this great city.

SERVICES

TICKETING

The Pasadena Civic Auditorium operates a full-time, professional Box Office on site. The Civic Box Office is located in the Foyer of the Civic Auditorium, providing easy public access for ticket sales and will call. The Civic Box Office utilizes the Ticketmaster computer-ticketing system offering sales via phone and internet at Ticketmaster.com. For complete details on all charges associated with the Box Office services, please call the Box Office Manager at 626-793-2122.

Civic Box Office

Daily hours

Office hours: Varies from week to week
Window hours: 10am—6pm, Friday for advanced sales,
On performance days the Box Office will open at least 3hrs prior to curtain.
Window hours for early morning performances may vary.

Public phone

626-449-7360

Public fax

626-395-7132

Website

thepasadenacivic.com

Email

boxoffice@thepasadenacivic.com

Mail orders

Box Office

300 E Green Street

Pasadena, CA 91101

Phone sales*

800-745-3000 [Ticketmaster]

Internet sales*

ticketmaster.com *Customer-paid convenience charges will apply



All advertising should contain complete and accurate information concerning the event, date, time, location, ticket-pricing and sales locations. Print advertising should include both phone numbers and, if mail order sales are to be expected, the mailing address. In addition, print ads should include the website address and logos for the Pasadena Civic Auditorium and Ticketmaster

Electronic (radio & television) ads must include the Ticketmaster phone numbers and website address and the Pasadena Civic website address. Advertising should note that convenience charges may apply for outlet, phone and internet sales.

The Pasadena Civic and Ticketmaster logos are available upon request.

Facility Restoration Fee

For ticketed events, there is a per ticket Facility Restoration Fee of \$3.00. This fee is due on all paid tickets, including single, group, season, and discounted tickets as well as all complimentary tickets in excess of the first 100. This fee is collected direct from the individual ticket buyer as they purchase their tickets. All advertised prices must include the Facility Restoration Fee. For special events not sold through our Box Office, the Facility Restoration Fee will be assessed to the client.

FRONT OF HOUSE

The Pasadena Civic Auditorium utilizes the services of our in-house Guest Services Department for all our front of house guest services needs.

FOOD & BEVERAGE

All catering requirements, cash concessions and alcoholic beverages at the Pasadena Civic Auditorium and adjoining facilities are provided in-house by Centerplate on an exclusive basis. For complete details, please contact the Director of Civic Operations

PARKING

The Pasadena Civic has on-site covered parking to accommodate 690 cars with an additional 2,500 spaces within a one-block radius.

PRODUCTION / STAGING

Production and staging require the services of IATSE Local 33 personnel at the client's expense. For your equipment needs, we can provide information on available in-house inventories and any associated expenses.

Two production offices are available in the wardrobe area, located on the basement level. Phone and data lines are available, rental charges apply.

SEAT REMOVAL

Auditorium seats may be removed for production requirements. These removals and re-installations must be arranged for in advance through the Director of Operations. The labor costs for these removals and re-installs will be assessed to the client.

ELECTRICAL

Advance notice of additional electrical distributions or power drops is required to expedite their availability as needed. We can review your needs and provide you with any associated expense that will be assessed.

PRODUCTION INFORMATION

STAGE HOUSE

HOUSE CURTAIN

Operates as a guillotine from SR deck

RIGGING SYSTEM

Type:.....Single purchase counter weight
Weight:.....45,000 lbs. Available
Line sets: 58 sets at 6" o.c. with 4 lift lines per set
Arbors:..... 1,000 lb capacity
House Pipes:..... 60' long with 71' of travel from deck
Line sets are moveable
Chain hoists are not available

PERMANENT INSTALLATIONS OVER STAGE

M=Moveable with advance call
Orchestra shells (6) at 4'-6", 13'-0", 21'-3", 28'-0", 31'-3", 36'-6"
Electric raceways (4) at 3'-0", 9'-0", 19'-0", 30'-0"
Cyclorama (1) at 30'-0", 60'-0"; M
Catwalk (1) fly floors SR & SL

PERMANENT INSTALLATION ON DECK

Orchestra shell storage (6) 20'-0" high x 3'0" wide, stores USL corner

ORCHESTRA PIT

Adjustable to 5' below stage level by hydraulic lift
Apron overhangs US wall of pit 14'-0"
Pit lift is in (3) sections
Organ & piano lift at center line



BACKSTAGE

LOADING DOCK

Loading door(s): 10'-0" high x 10'-0" wide
Trucks load (2) front-to-back at same time
Dock is at street level
Forklift: House owns
Lobby cannot be a work area
Trailers can store on-site based on Convention Center loading dock availability

WARDROBE

Location: Basement
Access: Freight elevator
(2) Commercial Washers (2) Commercial Dryers
Washer and dryer hookups available

DRESSING ROOMS

(1) Star, SL, stage level, t/s included, phone jack
(16) Small, SR/SL, +1, t/s included
(2) Chorus, SL, -1, t/s included
Additional production office available for company manager



PRODUCTION INFORMATION

SOUND

CONSOLE

Yamaha PM5D

SPEAKERS (PROSCENIUM — NO SPEAKER TRUSS)

L-Acoustics dV DOSC Line Array
12 cabinets flown per side
2 subs per side on the stage deck

FRONT FILL

6—EAW JF 80

COMMUNICATIONS

Clear Com intercom with 14 Beltpacks and 9 Single Headsets
FM Hearing Impaired Sound System
Dressing room page system

ROAD CONSOLE

Located Rear Orchestra Center,
Cable run from stage is 250'
Cable run from Center of Balcony to Stage Left is 200'

AMPLIFIERS:

4 – BGW 7500
4 – BGW 6500
2 – Yamaha P 2200
2 – Yamaha P 2100

MONITOR AMPS:

2 – Yamaha P 2200
1 – Yamaha P 2100

PROCESSORS:

2 – Rane AC 23 Crossovers
1 – Yamaha REV 5
2 – DBX 160
2 – DBX 166

MONITOR SPEAKERS:

2 – TOA
2 – JBL 3-way for side fill
7 – Hot Spots
4 – OAP SM – 115

MICROPHONES:

Audiotechnica:

| | | |
|-------------|---------------|-------------|
| 7 – ATM 41 | 11 – AT 31 A | 6 – AT 831A |
| 3 – AT 8505 | 2 – AT 857 QM | 6 – AT 8501 |
| 8 – ATM 35 | 8 – AT 8532 | 1 – AT 15 |
| 3—AT851 A | 5—AT815 R | |

Crown:

6 – PCC 160

Shure:

14 – SM 57 4 - SM 58 8 - Wireless SM58

AKG:

| | |
|------------------|-------------------|
| 3 – 460 with CK1 | 2 – 460 with ULSI |
| 1 – C 535 EB | 3 – 451 |
| 2—VR 1 | |

Electro-Voice:

3 – RE 15 1—MISC

Sony:

2 – ECM 50 PS

Misc Equipment

Countryman 5 – Type 85 Direct Boxes
Sescom 2—MS 4 Quad Mic Splitter
Numark 1- Duel CD Player
Denon—BluRay Player

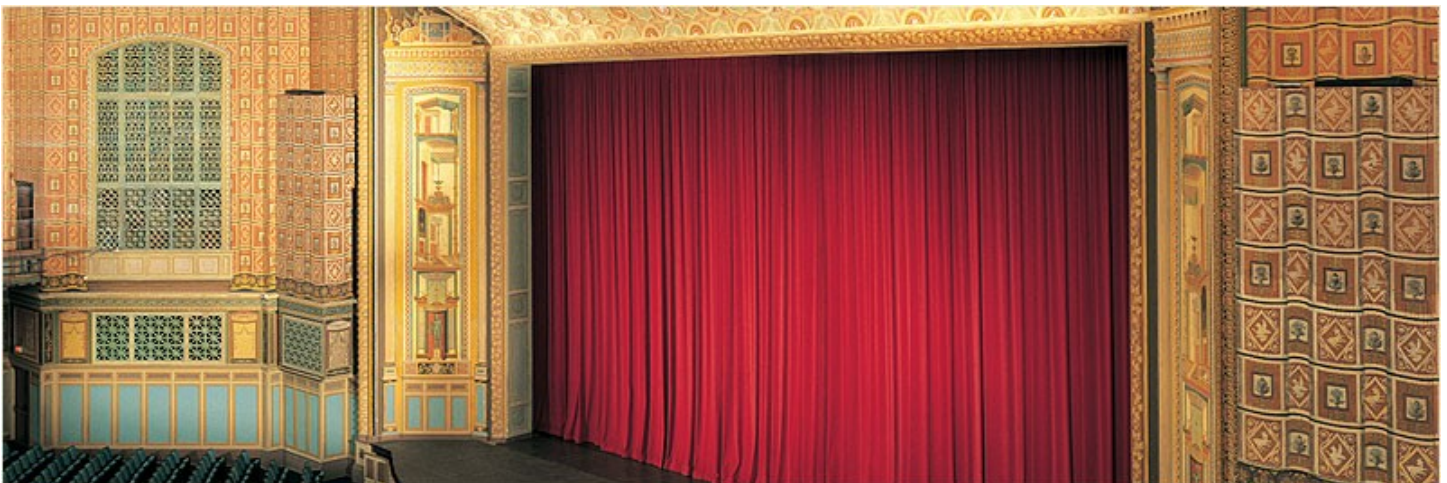
Mic Stands:

11—Tall Round Base w/Boom Arm
4—Tall Round Base Straight
5—Large Round Base w/ Boom Arm
2—Medium Round Base w/ Boom Arm
5– Short Round Base w/ Boom Arm
3—Tall Heavy Base w/ Boom Arm
5—1 foot silver Table Stand
6—6 Inch Table Stand

OTHER INFORMATION:

Patching is from stage right and microphone inputs are available stage left, stage right, orchestra pit, up stage right, and the balcony rail. There are also 3 dry pair from stage right to projection booth.

Road show audio power connection is up stage left on the back wall. 400 Amps per leg, 3 Phase 5 wire



PRODUCTION INFORMATION

ELECTRICS

ROAD SERVICE POWER

| Panel | Phase | Amp | Location |
|-------|-------|-----|----------|
| A | 3.0 | 600 | SR |
| B | 3.0 | 600 | SR |
| C | 3.0 | 400 | SL |

Recommended location of touring dimmer racks: SR onstage or on fly floor SR. Hoist is required.

FRONT OF HOUSE (BOX BOOM VALUES ARE PER

SIDE)

| Position | Pipe Width | Distance to Proscenium | House Circuits | Connector Type | FOH Transfer Circuits |
|-----------------|------------|------------------------|----------------|----------------------|-----------------------|
| First Balc Rail | 55' | 61' | 20 | grd 20 amp stage pin | 20 |

Transfer circuits: 28 transfer SR

EQUIPMENT FRONT OF HOUSE (BOX BOOM VALUES ARE PER SIDE)

| Position | Qty | Wattage | Instrument | Movable | Refocus |
|------------------------|-----|---------|---------------------|---------|---------|
| Upper Balc Booms Left | 6 | 750 | 10deg Source 4 Leko | No | Yes |
| | 4 | 1200 | Varilite 3500 | No | Yes |
| Upper Balc Booms Right | 6 | 750 | 10deg Source 4 Leko | No | Yes |
| | 4 | 1200 | Varilite 3500 | No | Yes |

EQUIPMENT ON-STAGE

| Position | Qty | Wattage | Instrument | Movable | Refocus |
|-------------------|-----|---------|-----------------------|---------|---------|
| #1 House Electric | 5 | 1200 | Varilite 3000 | No | Yes |
| #1 House Electric | 8 | 750 | 26deg Source 4 Leko | No | Yes |
| #1 House Electric | 4 | 285 | Chauvet Rogue R2 Wash | No | Yes |
| #2 House Electric | 4 | 1200 | Varilite 3000 | No | Yes |
| #2 House Electric | 4 | 285 | Chauvet Rogue R2 Wash | No | Yes |
| #2 House Electric | 5 | 1200 | Varilite 3000 | No | Yes |
| #2 House Electric | 8 | 750 | Source 4 Par | No | Yes |
| #3 House Electric | 5 | 1200 | Varilite 3000 | No | Yes |
| #3 House Electric | 4 | 285 | Chauvet Rogue R2 Wash | No | Yes |
| #4 House Electric | 8 | 750 | Source 4 Par | No | Yes |
| #4 House Electric | 5 | 285 | Chauvet Rogue R2 Wash | No | Yes |
| #4 House Electric | 4 | 1200 | Varilite 3000 | No | Yes |
| #5 House Electric | 4 | 285 | Chauvet Rogue R2 Wash | No | Yes |
| #5 House Electric | 5 | 1200 | Varilite 3000 | No | Yes |
| #6 House Electric | 4 | | Cyc Lights | No | Yes |

FOLLOWSPOTS

House Follow spots
(2) Gladiators (Xenon): not removable

FOLLOWSPOT BOOTH:

120' throw to proscenium;(5)30 and 10 30 amp breakers

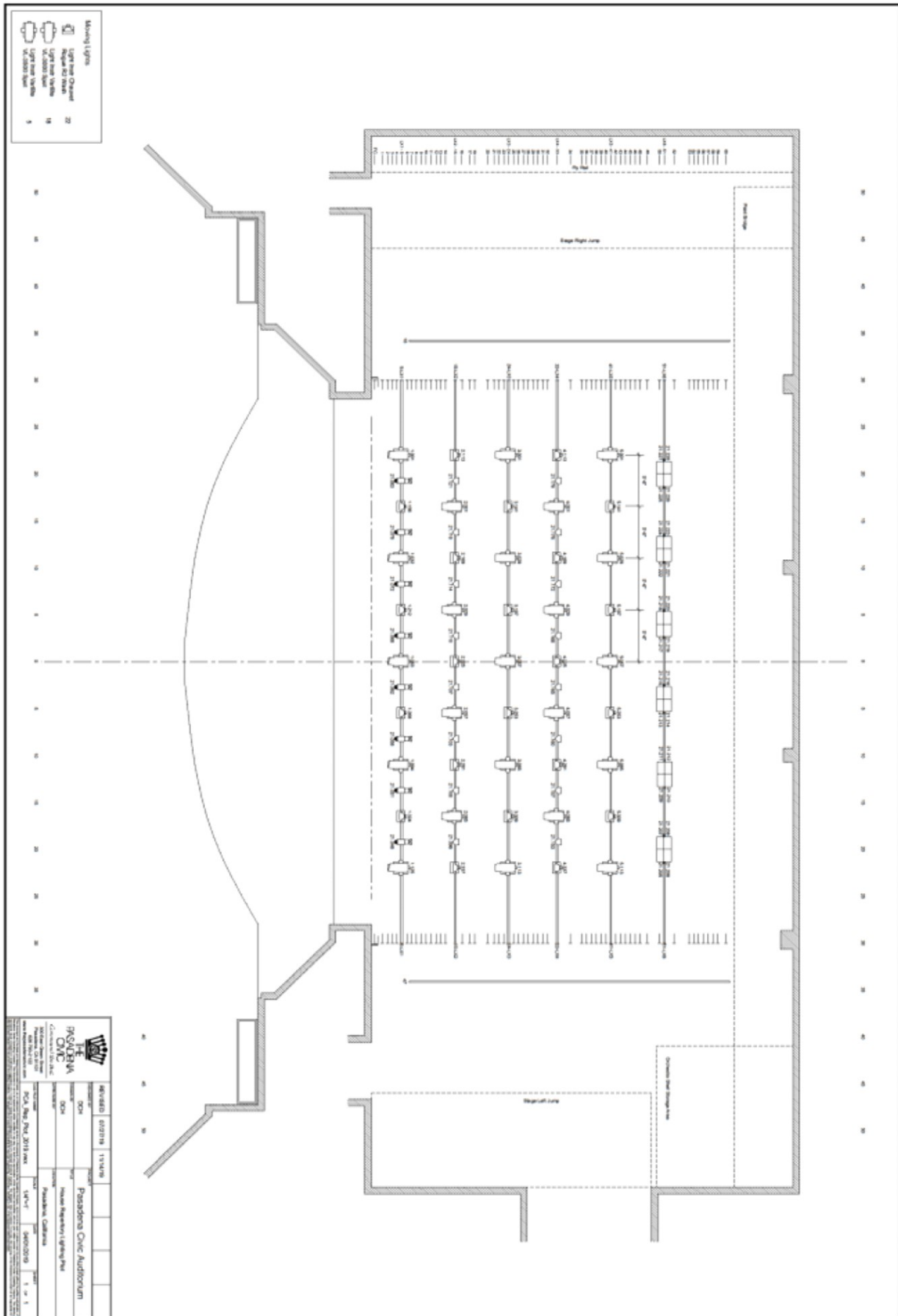
STAGE EQUIPMENT

Moeller Organ – 5 manual, 28 rank Theatre Organ
7' Black Steinway Grand Piano
5' Brown Steinway Grand Piano
95 Black orchestra chairs
75 Manhasset black music stands
50 Music stand lights
Chorus risers – seats 130 on 4 levels
Standing chorus risers – 3 rows, 8 units
4x8 Wood parallel platforms
6 at 9" 6 at 18" 6 at 27" 6 at 36"
Step units – 3 from stage
2 Lecterns

USA and California flags
Quick change booths (black flats)
15 – 6' tables
Mops, brooms
Genie 36' man lift
Forklift – 2 ton
Pallet jack
Wegner Orchestra Shell – 4 ceilings, 3 sections per side (Power sets)
Stage Floor—brown painted particle board over wood
Tech Tables



LIGHTING PLOT

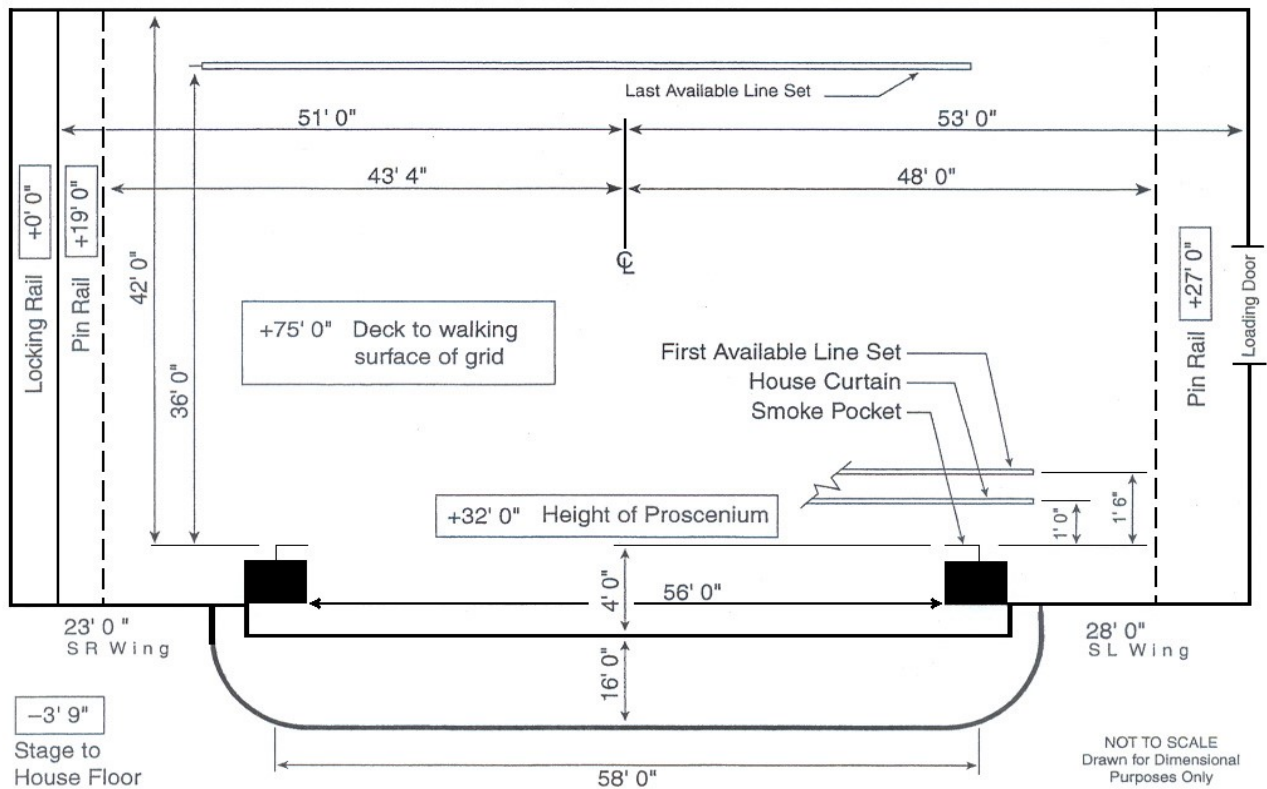


PRODUCTION INFORMATION

LINE SETS

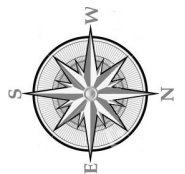
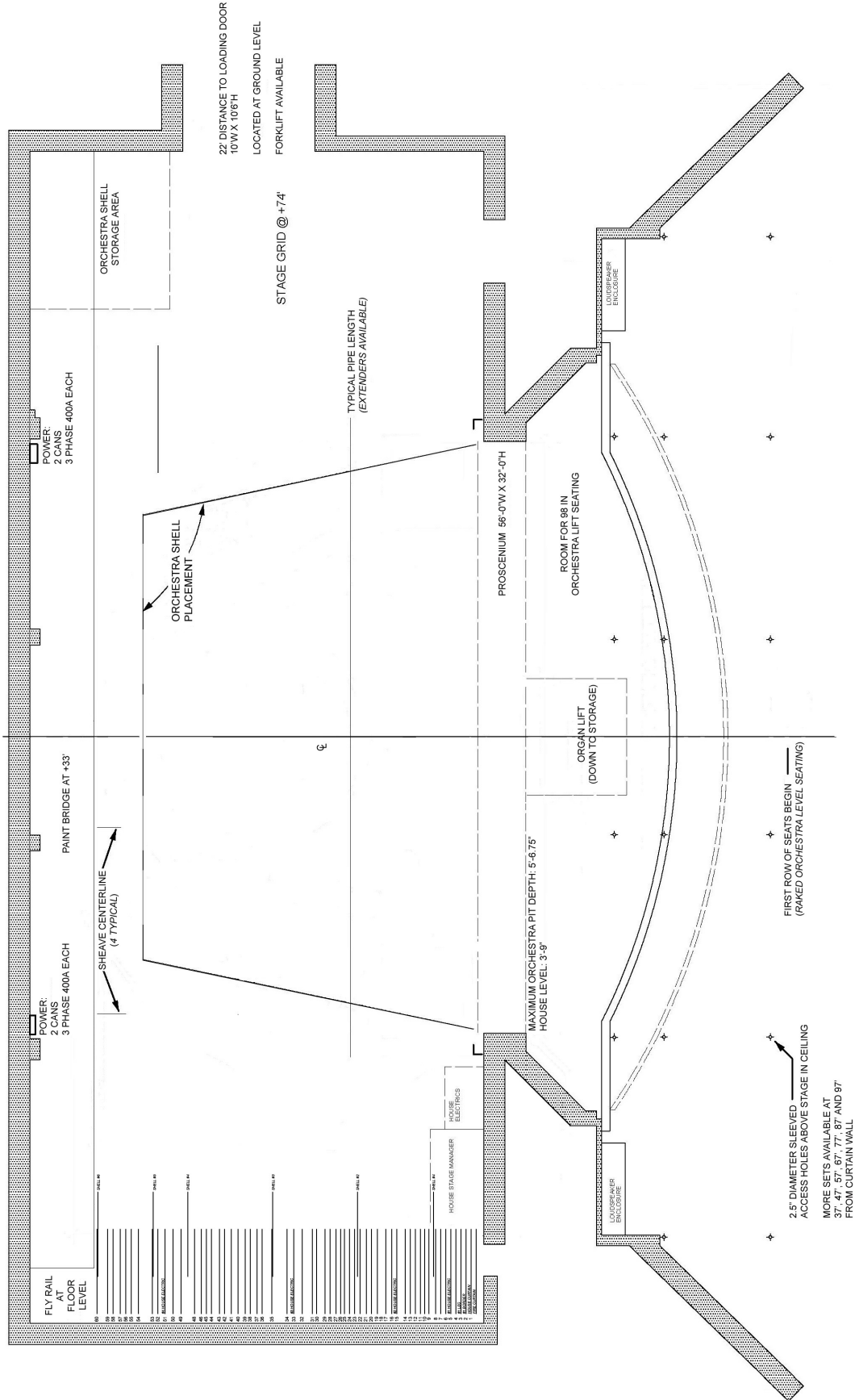
| PIPE | DESCRIPTOIN | LOCATION | PIPE | DESCRIPTOIN | LOCATION | PIPE | DESCRIPTOIN | LOCATION |
|------|-------------------------------|----------|------|-------------------------------|-----------|------|-------------------------------|-----------|
| | Fire Curtain | | 21 | Teal Curtain | 12'-1" | 40 | | 23'-11" |
| 1 | House Curtain | 1'-0" | | Power Set – Orchestra Ceiling | | 41 | #5 House Electric | 24'-5" |
| 2 | #1 Border | 1'-6" | 22 | | 12'-10" | 42 | | 24'-11.5" |
| 3 | #1 Leg | 2'-0" | 23 | | 13'-4" | 43 | | 25'-5" |
| 4 | | 2'-6" | 24 | #3 House Electric | 13'-11" | 44 | | 26'-0" |
| 5 | #1 House Electric | 3'-0" | 25 | | 14'-5.5" | 45 | | 26'-6" |
| 6 | | 3'-6" | 26 | | 14'-10.5" | 46 | | 27'-0" |
| 7 | | 4'-0" | 27 | #4 Border | 15'-5" | 47 | Stage Left Ladder | |
| 8 | | 4'-4.5" | 28 | #4 Leg | 16'-0" | 48 | #6 Border | 27'-5.5" |
| | Power Set - Orchestra Ceiling | | 29 | | 16'-6" | | Power Set – Orchestra Ceiling | |
| 9 | | 5'-3" | 30 | | 17'-2.5" | 49 | #6 Legs | 28'-8" |
| 10 | | 5'-8" | | Power Set "A" | | 50 | | 29'-6" |
| 11 | #2 Border | 6'-0" | 31 | | 17'-6.5" | 51 | #6 House Electric | 30'-1.5" |
| 12 | #2 Leg | 6'-6" | 32 | | 18'-4.5" | 52 | | 31'-0" |
| 13 | | 7'-0" | 33 | #4 House Electric | | 53 | | 31'-5" |
| 14 | House Screen | 7'-6" | 34 | | 19'-9.5" | 54 | #7 Border | 33'-0" |
| 15 | #2 House Electric | 8'-6" | | Power Set – Orchestra Ceiling | | 55 | | 33'-6" |
| 16 | | 9'-2" | 35 | #5 Border | 21'-5" | 56 | | 34'-0" |
| 17 | | 10'-0" | 36 | #5 Leg | 22'-0" | 57 | | 34'-6" |
| 18 | Stage Right Ladder | | 37 | | 22'-6" | 58 | #7 Legs | 35'-0" |
| 19 | #3 Border | 10'-8.5" | 38 | | 23'-0" | 59 | Scrim | 35'-6" |
| 20 | #3 Leg | 11'-5.5" | 39 | | 23'-5" | 60 | CYC | 36'-7" |

STAGE DIMENSIONS



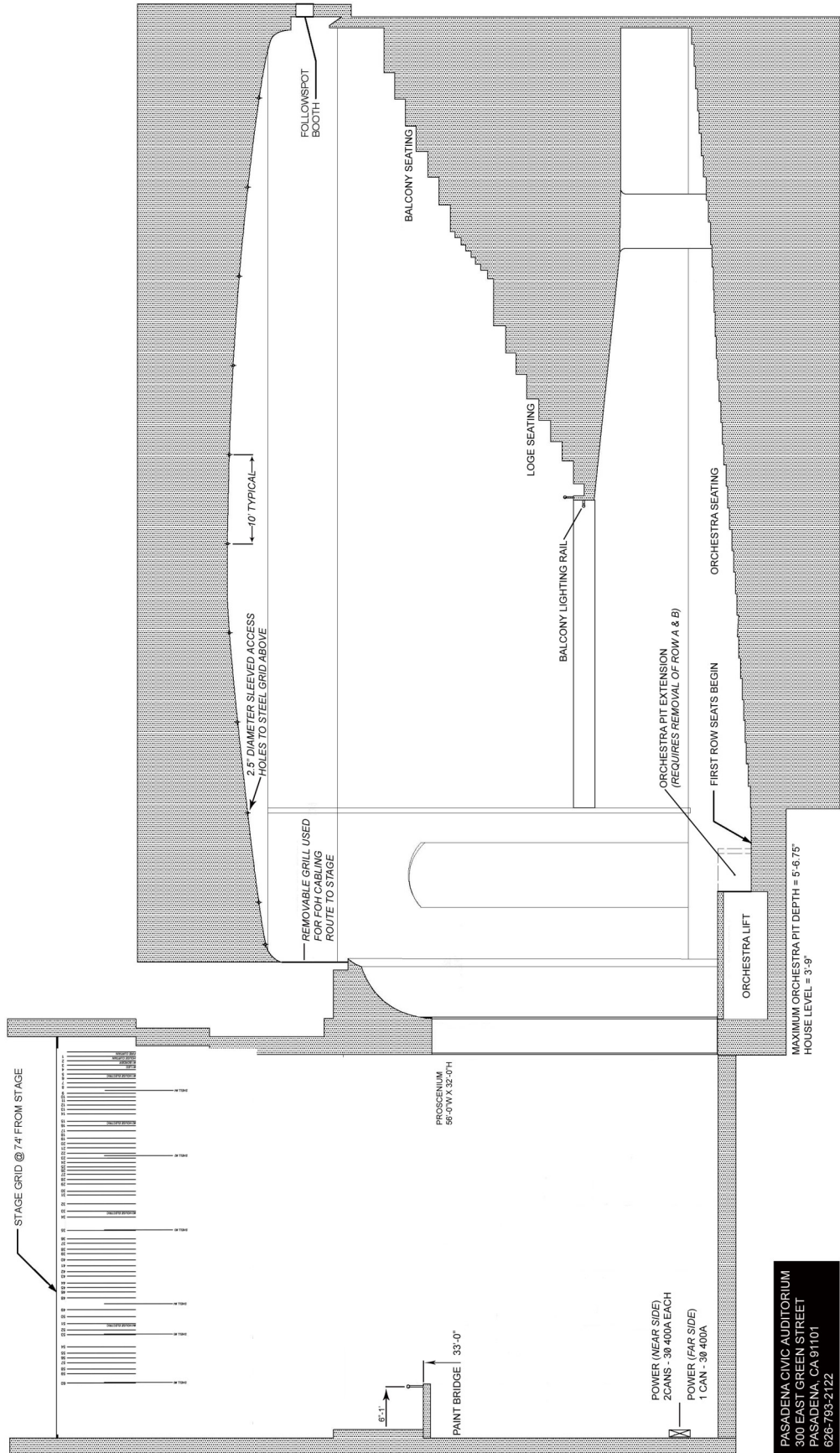
PRODUCTION INFORMATION

PASADENA CIVIC GROUNDPLAN



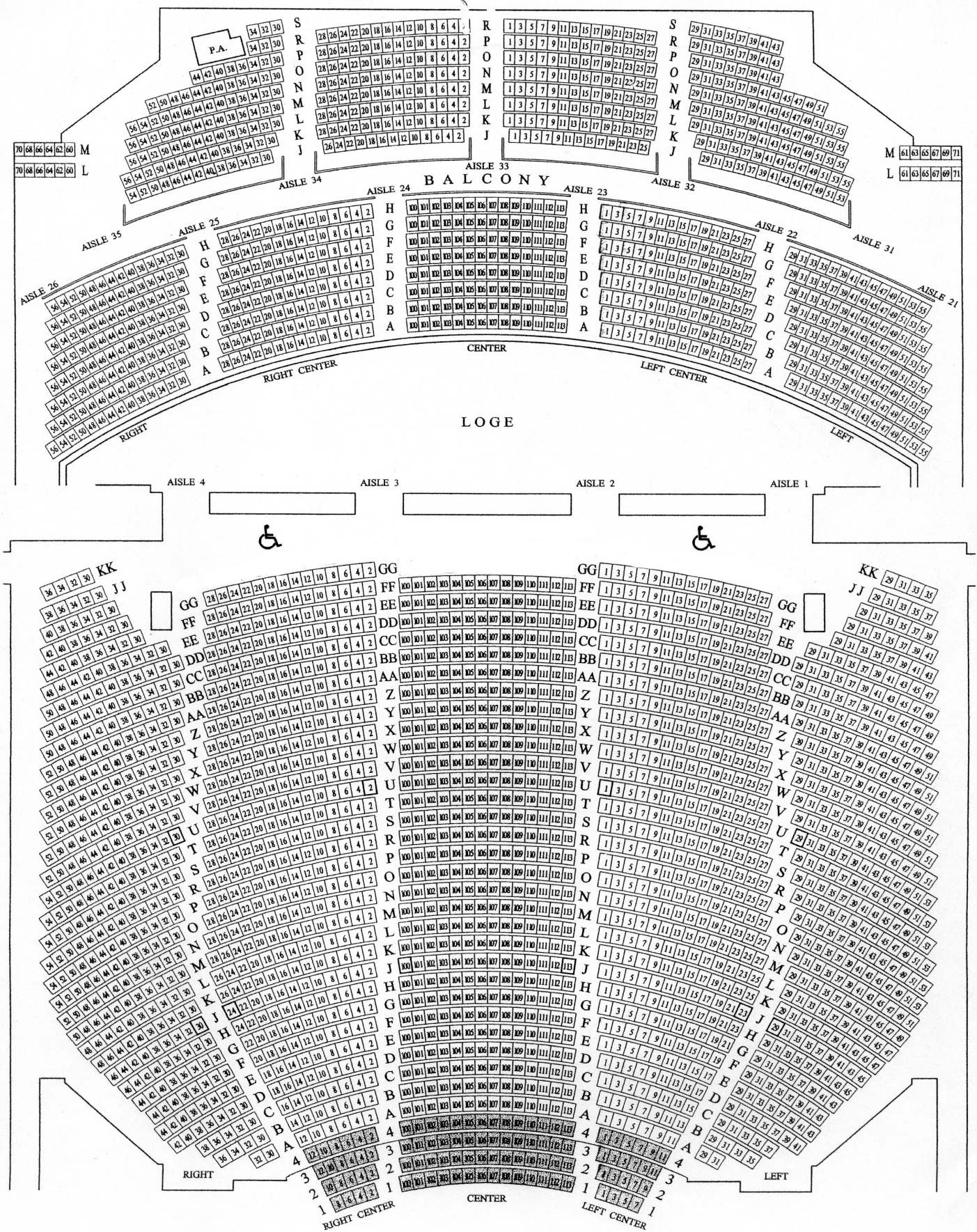
PRODUCTION INFORMATION

PASADENA CIVIC CROSS SECTION

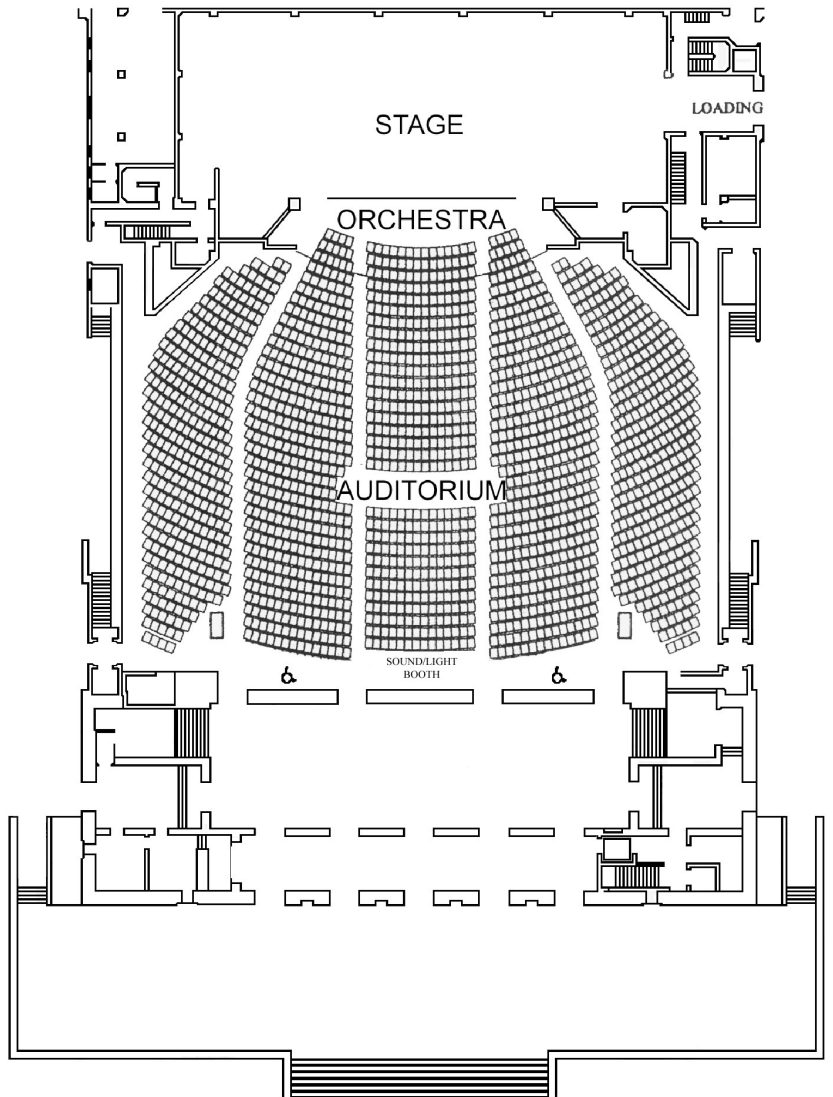
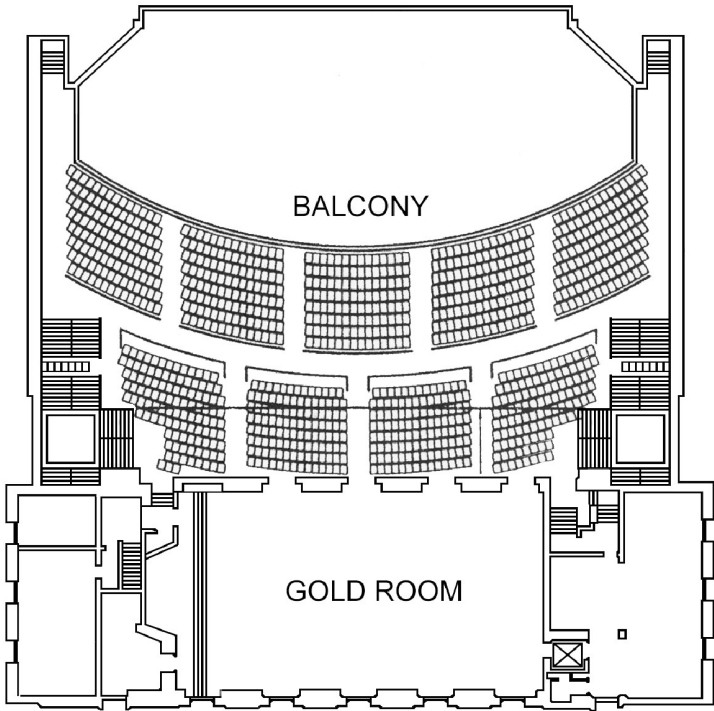


PASADENA CIVIC AUDITORIUM
 300 EAST GREEN STREET
 PASADENA, CA 91101
 626-793-2122

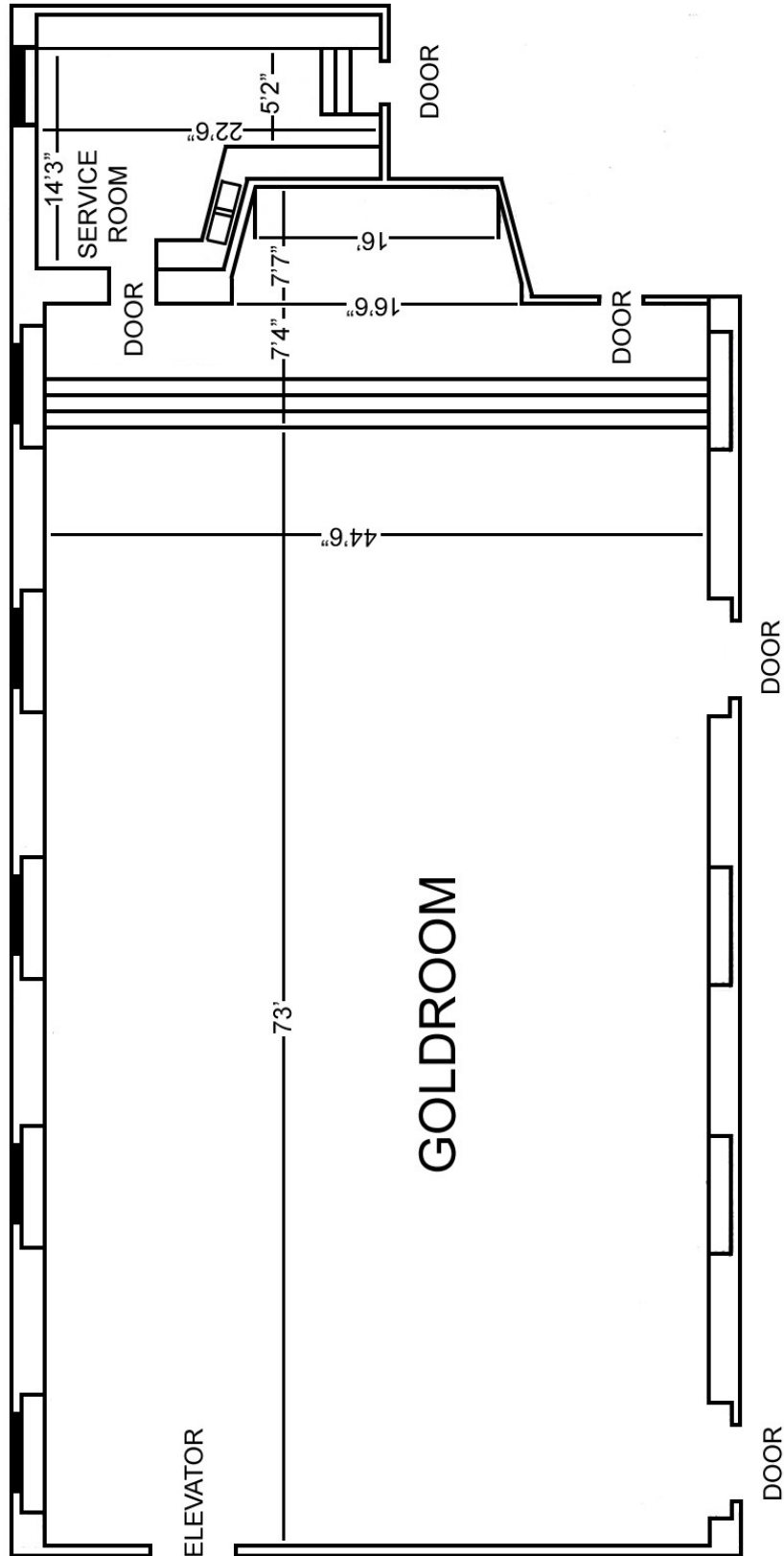
SEATING CHART



SEATING CHART



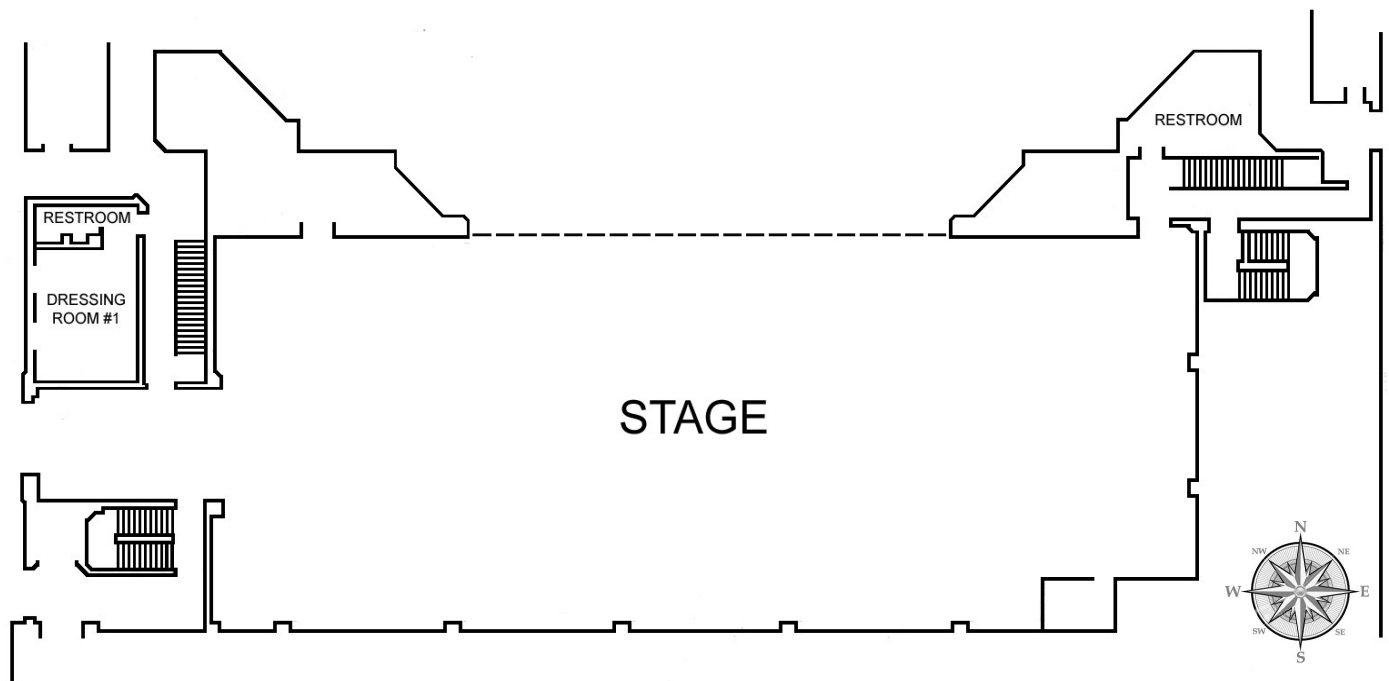
GOLDROOM



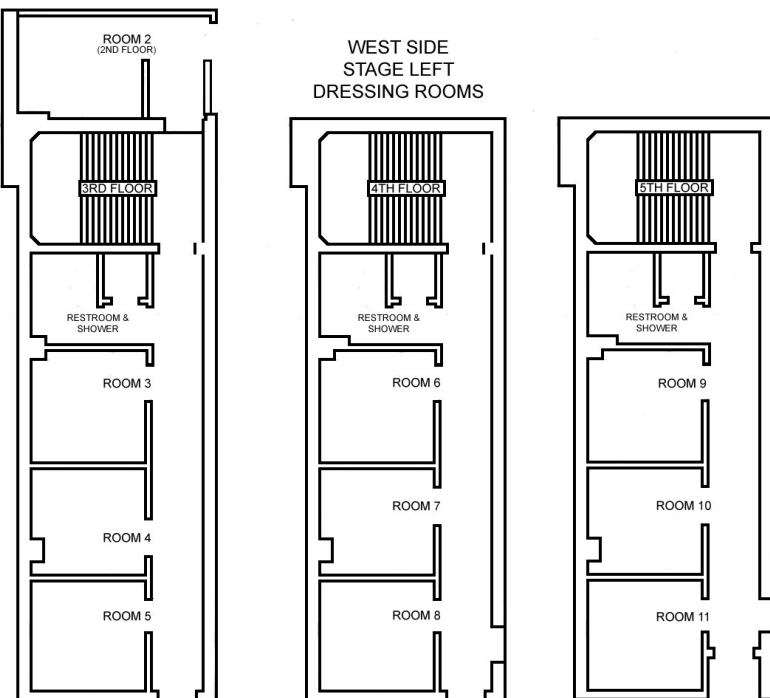
Located on the second floor, the classic Gold Room provides an unforgettable setting for smaller meetings, receptions, or dinner parties of up to 300 guests.

DRESSING ROOMS

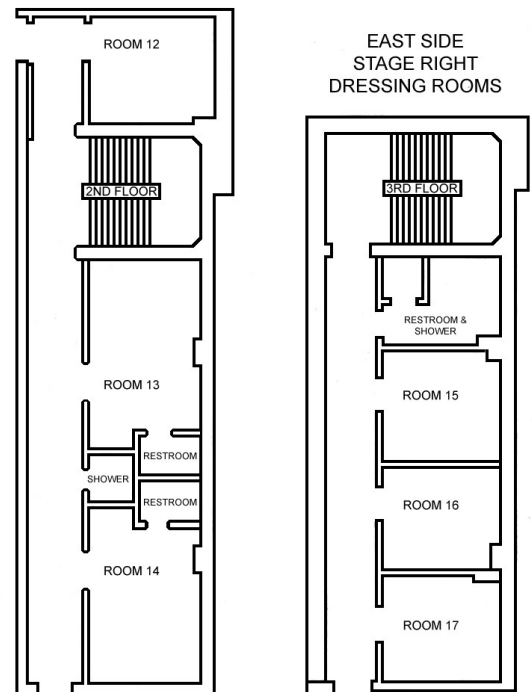
STAGE LEVEL



WEST SIDE



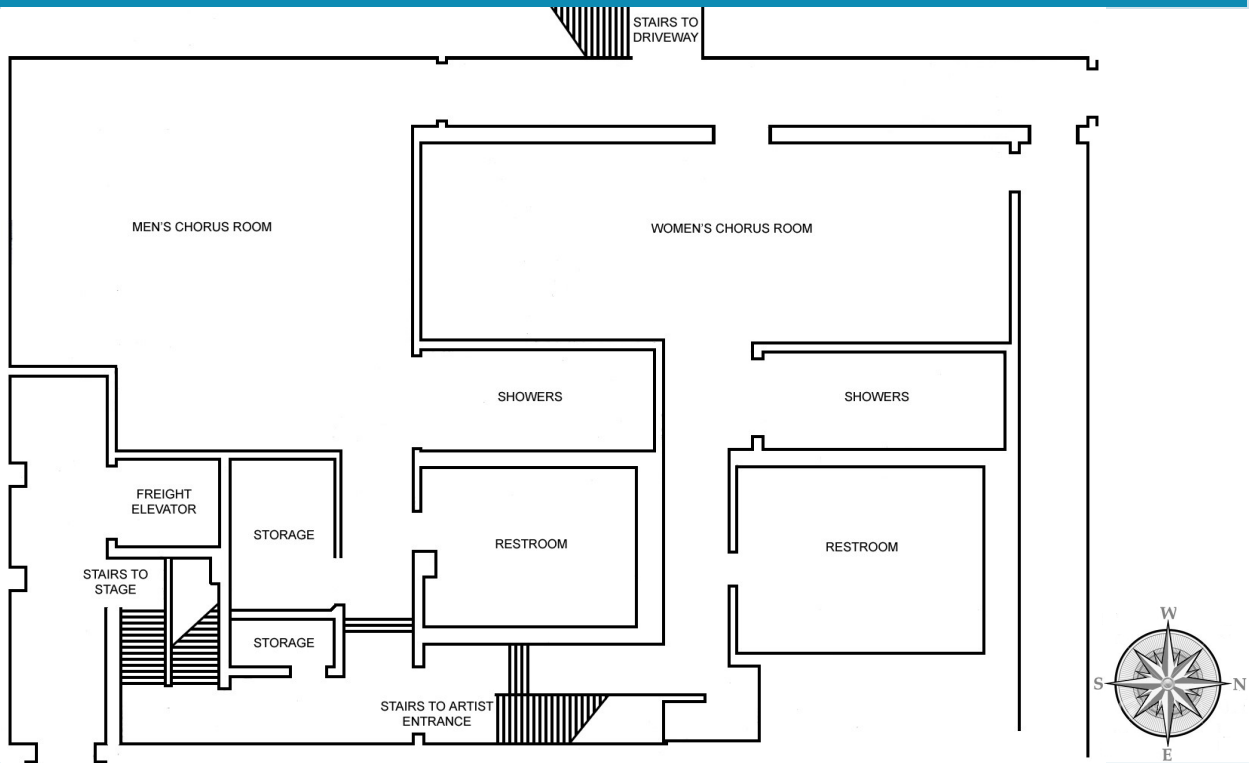
EAST SIDE



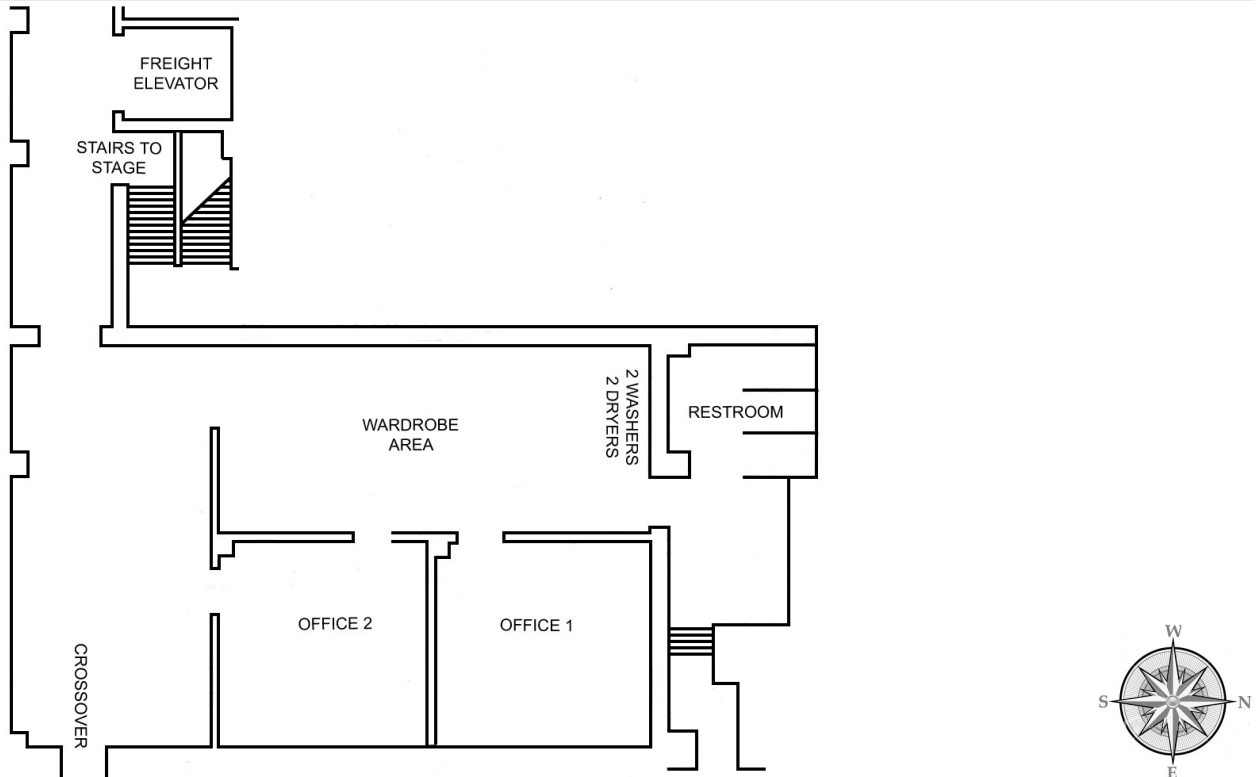
There are 17 dressing rooms [*one Star room (#1) and 16 two person dressing rooms*] and 2 chorus rooms available. At full capacity, these facilities will accommodate 67 people.

DRESSING ROOMS

CHORUS LEVEL



BASEMENT LEVEL



The women's chorus room has 11 mirrors while the men's chorus room contains 23 mirrors.



THE
PASADENA
CIVIC
Command the Best.

300 East Green Street
Pasadena, CA 91101
626-793-2122 626-844-1422 *FAX*
www.thepasadenacivic.com