

## TECHNICAL MANUAL UNIT MAINTENANCE

TRUCK, UTILITY: CARGO/TROOP CARRIER, 1-1/4 TON, 4X4, M998  
(2320-01-107-7155) (EIC: BBD); M998A1 (2320-01-371-9577) (EIC: BBN);

TRUCK, UTILITY: CARGO/TROOP CARRIER, 1-1/4 TON, 4X4, W/WINCH,  
M1038 (2320-01-107-7156) (EIC: BBE); M1038A1 (2320-01-371-9578) (EIC: BBP);

TRUCK, UTILITY: HEAVY VARIANT, 4X4, M1097 (2320-01-346-9317) (EIC: BBM);  
M1097A1 (2320-01-371-9583) (EIC: BBU); M1097A2 (2320-01-380-8604) (EIC: BB6);  
M1123 (2320-01-455-9593) (EIC: B6G);

TRUCK, UTILITY: TOW CARRIER, ARMORED, 1-1/4 TON, 4X4,  
M966 (2320-01-107-7153) (EIC: BBC); M966A1 (2320-01-372-3932) (EIC: BBX);  
M1121 (2320-01-456-1282) (EIC: B6H);

TRUCK, UTILITY: TOW CARRIER, ARMORED, 1-1/4 TON, 4X4, W/WINCH,  
M1036 (2320-01-107-7154) (EIC: BBH);

TRUCK, UTILITY: TOW CARRIER, W/SUPPLEMENTAL ARMOR, 1-1/4 TON, 4X4,  
M1045 (2320-01-146-7191); M1045A1 (2320-01-371-9580) (EIC: BBR);  
M1045A2 (2320-01-380-8229) (EIC: BB5);

TRUCK, UTILITY: TOW CARRIER, W/SUPPLEMENTAL ARMOR, 1-1/4 TON, 4X4, W/WINCH,  
M1046 (2320-01-146-7188); M1046A1 (2320-01-371-9582) (EIC: BBT);

TRUCK, UTILITY: ARMAMENT CARRIER, ARMORED, 1-1/4 TON, 4X4, M1025  
(2320-01-128-9551) (EIC: BBF); M1025A1 (2320-01-371-9584) (EIC: BBV);  
M1025A2 (2320-01-380-8233) (EIC: BB3);

TRUCK, UTILITY: ARMAMENT CARRIER, ARMORED, 1-1/4 TON, 4X4, W/WINCH,  
M1026 (2320-01-128-9552) (EIC: BBG); M1026A1 (2320-01-371-9579) (EIC: BBQ);

TRUCK, UTILITY: ARMAMENT CARRIER, W/SUPPLEMENTAL ARMOR, 1-1/4 TON, 4X4,  
M1043 (2320-01-146-7190); M1043A1 (2320-01-372-3933) (EIC: BBY);  
M1043A2 (2320-01-380-8213) (EIC: BB4);

TRUCK, UTILITY: ARMAMENT CARRIER, W/SUPPLEMENTAL ARMOR, 1-1/4 TON, 4X4,  
W/WINCH, M1044 (2320-01-146-7189); M1044A1 (2320-01-371-9581) (EIC: BBS);

TRUCK, UTILITY: S250 SHELTER CARRIER, 4X4, M1037 (2320-01-146-7193) (EIC: BBK);

TRUCK, UTILITY: S250 SHELTER CARRIER, 4X4, W/WINCH, M1042 (2320-01-146-7187);

TRUCK, AMBULANCE, 2-LITTER, ARMORED, 4X4, M996 (2310-01-111-2275)  
(EIC: BBB); M996A1 (2310-01-372-3935) (EIC: BB2);

TRUCK, AMBULANCE, 4-LITTER, ARMORED, 4X4, M997 (2310-01-111-2274) (EIC: BBA);  
M997A1 (2310-01-372-3934) (EIC: BBZ); M997A2 (2310-01-380-8225) (EIC: BB8);

TRUCK, AMBULANCE, 2-LITTER, SOFT TOP, 4X4, M1035 (2310-01-146-7194);  
M1035A1 (2310-01-371-9585) (EIC: BBW); M1035A2 (2310-01-380-8290) (EIC: BB9).

BODY AND ACCESSORIES  
MAINTENANCE 10-1

SPECIAL PURPOSE  
BODIES MAINTENANCE 11-1

SPECIAL PURPOSE KITS  
MAINTENANCE 12-1

PREPARATION FOR  
STORAGE OR SHIPMENT 13-1

Approved for public release; distribution is unlimited.

HEADQUARTERS, DEPARTMENTS OF THE ARMY,  
THE AIR FORCE, AND MARINE CORPS

JANUARY 1996

**TECHNICAL MANUAL  
NO. 9-2320-280-20-3  
NO. 2320-20/7C**

**HEADQUARTERS,  
DEPARTMENTS OF THE ARMY,  
THE AIR FORCE, AND MARINE CORPS  
WASHINGTON, D.C., 31 JANUARY 1996**

**TECHNICAL ORDER  
NO. 36A12-1A-2092-1-3**

## **TECHNICAL MANUAL VOLUME 3 OF 3**

### **UNIT MAINTENANCE**

- TRUCK, UTILITY: CARGO/TROOP CARRIER, 1-1/4 TON, 4X4, M998 (2320-01-107-7155) (EIC: BBD);  
M998A1 (2320-01-371-9577) (EIC: BBN);**
- TRUCK, UTILITY: CARGO/TROOP CARRIER, 1-1/4 TON, 4X4, W/WINCH, M1038 (2320-01-107-7156) (EIC: BBE);  
M1038A1 (2320-01-371-9578) (EIC: BBP);**
- TRUCK, UTILITY: HEAVY VARIANT, 4X4, M1097 (2320-01-346-9317) (EIC: BBM); M1097A1 (2320-01-371-9583) (EIC: BBU);  
M1097A2 (2320-01-380-8604) (EIC: BB6); M1123 (2320-01-455-9593) (EIC: B6G);**
- TRUCK, UTILITY: TOW CARRIER, ARMORED, 1-1/4 TON, 4X4, M966 (2320-01-107-7153) (EIC: BBC);  
M966A1 (2320-01-372-3932) (EIC: BBX); M1121 (2320-01-456-1282) (EIC: B6H);**
- TRUCK, UTILITY: TOW CARRIER, ARMORED, 1-1/4 TON, 4X4, W/WINCH, M1036 (2320-01-107-7154) (EIC: BBH);**
- TRUCK, UTILITY: TOW CARRIER, W/SUPPLEMENTAL ARMOR, 1-1/4 TON, 4X4,  
M1045 (2320-01-146-7191); M1045A1 (2320-01-371-9580) (EIC: BBR); M1045A2 (2320-01-380-8229) (EIC: BB5);**
- TRUCK, UTILITY: TOW CARRIER, W/SUPPLEMENTAL ARMOR, 1-1/4 TON, 4X4, W/WINCH, M1046 (2320-01-146-7188);  
M1046A1 (2320-01-371-9582) (EIC: BBT);**
- TRUCK, UTILITY: ARMAMENT CARRIER, ARMORED, 1-1/4 TON, 4X4, M1025 (2320-01-128-9551) (EIC: BBF);  
M1025A1 (2320-01-371-9584) (EIC: BBV); M1025A2 (2320-01-380-8233) (EIC: BB3);**
- TRUCK, UTILITY: ARMAMENT CARRIER, ARMORED, 1-1/4 TON, 4X4, W/WINCH, M1026 (2320-01-128-9552) (EIC: BBG);  
M1026A1 (2320-01-371-9579) (EIC: BBQ);**
- TRUCK, UTILITY: ARMAMENT CARRIER, W/SUPPLEMENTAL ARMOR, 1-1/4 TON, 4X4, M1043 (2320-01-146-7190);  
M1043A1 (2320-01-372-3933); M1043A2 (2320-01-380-8213) (EIC: BB4);**
- TRUCK, UTILITY: ARMAMENT CARRIER, W/SUPPLEMENTAL ARMOR, 1-1/4 TON, 4X4, W/WINCH, M1044 (2320-01-146-7189);  
M1044A1 (2320-01-371-9581);**
- TRUCK, UTILITY: S250 SHELTER CARRIER, 4X4, M1037 (2320-01-146-7193) (EIC: BBK);**
- TRUCK, UTILITY: S250 SHELTER CARRIER, 4X4, W/WINCH, M1042 (2320-01-146-7187);**
- TRUCK, AMBULANCE, 2-LITTER, ARMORED, 4X4, M996 (2310-01-111-2275)  
(EIC: BBB); M996A1 (2310-01-372-3935) (EIC: BB2);**
- TRUCK, AMBULANCE, 4-LITTER, ARMORED, 4X4, M997 (2310-01-111-2274) (EIC: BBA);  
M997A1 (2310-01-372-3934) (EIC: BBZ); M997A2 (2310-01-380-8225) (EIC: BB8);**
- TRUCK, AMBULANCE, 2-LITTER, SOFT TOP, 4X4, M1035 (2310-01-146-7194);  
M1035A1 (2310-01-371-9585) (EIC: BBW); M1035A2 (2310-01-380-8290) (EIC: BB9).**

Approved for public release; distribution is unlimited.

#### **REPORTING OF ERRORS AND RECOMMENDING IMPROVEMENTS**

You can help improve this publication. If you find any mistakes or if you know of a way to improve the procedures, please let us know. (Army) Submit your DA Form 2028-2 (Recommended Changes to Equipment Technical Publications), through the Internet, on the Army Electronic Product Support (AEPS) website. The Internet address is <http://aeprs.ria.army.mil>. If you need a password, scroll down and click on "ACCESS REQUEST FORM." The DA Form 2028 is located in the ONLINE FORMS PROCESSING section of the AEPS. Fill out the form and click on SUBMIT. Using this form on the AEPS will enable us to respond quicker to your comments and better manage the DA Form 2028 program. You may also mail, fax or email your letter, DAForm 2028, or DAForm 2028-2 direct to: Commander, U.S. Army Tank-automotive and Armaments Command, ATTN: AMSTA-LC-CIP-WT, Rock Island, IL 61299-7630. The email address is [amsta-ac-nml@ria.army.mil](mailto:amsta-ac-nml@ria.army.mil). The fax number is DSN 793-0726 or Commercial (309) 782-0726. (Marine Corps) Submit NAVMC 10722 to Commander Code 835-2, Marine Corps Logistic Base, 814 Radford Boulevard, Albany, GA 31704-1128.

This manual is published in three parts. TM 9-2320-280-20-1 contains chapters 1 and 2, TM 9-2320-280-20-2 contains chapters 3 through 9, and TM 9-2320-280-20-3 contains chapters 10 through 13 and Appendices A through G.

This manual contains a table of contents and alphabetized index for chapters 10 through 13.

\* This publication supersedes TM 9-2320-280-20-3 dated 1 November 1993 and all changes.

VOLUME 3 OF 3

	Page
CHAPTER 10	10-1
<b>BODY AND ACCESSORIES MAINTENANCE</b>	
Section I. Body Maintenance	10-1
II. Body Accessories Maintenance	10-115
III. Winch Maintenance	10-179
CHAPTER 11	11-1
<b>SPECIAL PURPOSE BODIES MAINTENANCE</b>	
Section I. Weapon Carrier Body Maintenance	11-1
II. S250 Shelter Carrier Body Maintenance	11-161
III. Ambulance Body Maintenance	11-173
CHAPTER 12	12-1
<b>SPECIAL PURPOSE KITS MAINTENANCE</b>	
Section I. Deep Water Fording Kit Maintenance	12-1
II. Troop Seat Kit Maintenance	12-19
III. 100 Ampere Alternator Kit Maintenance	12-23
IV. Arctic Winterization Kits Maintenance	12-36
V. Arctic Winterization Crew Top Kits Maintenance	12-104
VI. Troop/Cargo Winterization Kit Maintenance	12-114
VII. Communications Kits Maintenance	12-201
VIII. 81 MM Mortar Kit Maintenance	12-235
IX. Traversing Bar Kit Maintenance	12-251
X. M1097, M1097A1, M1097A2, and M1123 Special Purpose Kits Maintenance	12-254
XI. Accessory Kits Installation	12-282
XII. Cargo Barrier and Net Kit Maintenance	12-314
CHAPTER 13	13-1
<b>PREPARATION FOR STORAGE OR SHIPMENT</b>	
Section I. General Instructions	13-1
II. Preparation for Storage and Shipment	13-2
APPENDIX A	A-1
APPENDIX B	B-1
APPENDIX C	C-1
APPENDIX D	D-1
APPENDIX E	E-1
APPENDIX F	F-1
APPENDIX G	G-1
INDEX	Index 1

# CHAPTER 10

## BODY AND ACCESSORIES MAINTENANCE

### Section I. BODY MAINTENANCE

#### 10-1. BODY MAINTENANCE TASK SUMMARY

TASK PARA.	PROCEDURES	PAGE NO.
10-2.	Fuel Filler Housing Replacement	10-3
10-3.	Hood Latch and Bracket Replacement	10-4
10-4.	Hood Prop Rod and Bracket Maintenance	10-6
10-5.	Hood and Hinge Replacement	10-8
10-6.	Outer Hood Seal Replacement	10-11
10-7.	Side Hood Stop Replacement	10-12
10-8.	Center Hood Stop Replacement	10-13
10-9.	Footman Loop and Strap Replacement	10-14
10-9.1.	Jack Retaining Strap Replacement	10-14.1
10-10.	Center Hood Stop Guide Replacement	10-15
10-11.	Front Hood Screen Replacement	10-16
10-12.	Hood Grille and Screen Replacement	10-17
10-13.	Door Handle Assembly Maintenance	10-18
10-14.	Fixed Rear Door Replacement	10-21
10-15.	Engine Access Cover Maintenance	10-22
10-16.	Engine Access Cover Flexible Latch and Holddown Strike Replacement	10-27
10-17.	Engine Left Splash Shield Maintenance	10-28
10-18.	Engine Left Splash Shield Access Cover Replacement	10-32
10-19.	3.5-Ton Jack Stowage Bracket and Cover Replacement	10-33
10-20.	Engine Right Splash Shield Maintenance	10-34
10-21.	Windshield Glass and Weatherstrip Replacement	10-38
10-22.	Windshield Ballistic Glass Replacement	10-40
10-23.	Windshield Assembly Maintenance	10-42
10-24.	Windshield Retention Bracket Replacement	10-44
10-25.	Left Outer Cowl Insulation Replacement	10-45
10-26.	Left Front Cowl Insulation Replacement	10-46
10-27.	Right Front Cowl Insulation Replacement	10-47
10-28.	Tunnel Interior Side Insulation Replacement	10-48
10-29.	Rear Seat Floor Insulation Replacement	10-50
10-30.	Right Inner Cowl Insulation Panel Replacement	10-51
10-31.	Left Inner Cowl Insulation Panel Replacement	10-52
10-31.1.	Cargo Floor Access Cover Maintenance (M1123)	10-56.2
10-32.	Driver's Seat Frame Replacement	10-58
10-33.	Driver's Seat and Seat Back Cushions Replacement	10-60

<b>10-1. BODY MAINTENANCE TASK SUMMARY (Cont'd)</b>
---

<b>TASK PARA.</b>	<b>PROCEDURES</b>	<b>PAGE NO.</b>
10-34.	Companion Seat Back Replacement	10-61
10-35.	Companion Seat and Battery Box Cover Replacement	10-62
10-36.	Battery Box Cover Latch Replacement	10-63
10-37.	Companion Seat and Seat Back Cushions Replacement	10-64
10-38.	Driver's Seat Assembly Replacement	10-65
10-39.	Driver's Seat Assembly Maintenance	10-66
10-40.	Battery Box Cover Catch Replacement	10-68
10-41.	Companion Seat Assembly and Battery Box Cover Replacement	10-69
10-42.	Companion Seat Assembly Maintenance	10-70
10-43.	Passenger Seat and Storage Compartment Cover Replacement	10-71
10-44.	Passenger Seat and Storage Compartment Latch Replacement	10-72
10-45.	Passenger Seat Back Replacement	10-73
10-46.	Passenger Seat and Seat Back Cushions Replacement	10-74
10-47.	Seatbelt Assembly Replacement	10-75
10-48.	Three Point Seatbelt Maintenance	10-76
10-48.1.	Three Point Seatbelt Maintenance (M996, M996A1, M997, M997A1, and M997A2)	10-80.2
10-49.	Three Point Seatbelt Brackets Replacement	10-82
10-49.1.	Three Point Seatbelt Brackets Replacement (M996, M996A1, M997, M997A1, and M997A2)	10-82.2
10-50.	Pioneer Tool Stowage Tray Maintenance	10-84
10-51.	Pioneer Tool Stowage Tray Mounting Bracket Replacement	10-86
10-52.	Pioneer Tool Stowage Tray Latch Striker Replacement	10-87
10-53.	Cargo Bulkhead Replacement	10-88
10-54.	Cargo Bulkhead Mounting Brackets Replacement	10-89
10-55.	Cargo Barrier Extension Maintenance	10-90
10-56.	Cargo Tiedown Replacement	10-92
10-57.	Fire Extinguisher Bracket Replacement	10-93
10-58.	Fire Extinguisher Support Replacement	10-94
10-59.	Driver's Seat Retainer Plate Assembly Replacement	10-95
10-60.	Tailgate Chain and Brackets Replacement	10-96
10-61.	Tailgate Replacement	10-98
10-62.	Tailgate Upper Hinge Replacement	10-100
10-63.	Mud Flap Installation	10-102
10-64.	Body Hinge Mount Replacement	10-103
10-65.	Airlift Bracket to Hood Seal Replacement	10-104
10-66.	Body Repair	10-105
10-67.	"B" Pillar Replacement	10-111
10-68.	M11 Decontamination Brackets Installation	10-112

## 10-2. FUEL FILLER HOUSING REPLACEMENT

This task covers:

a. Removal

b. Installation

### INITIAL SETUP

#### **Tools**

General mechanic's tool kit  
automotive (Appendix B, Item 1)

#### **Manual Reference**

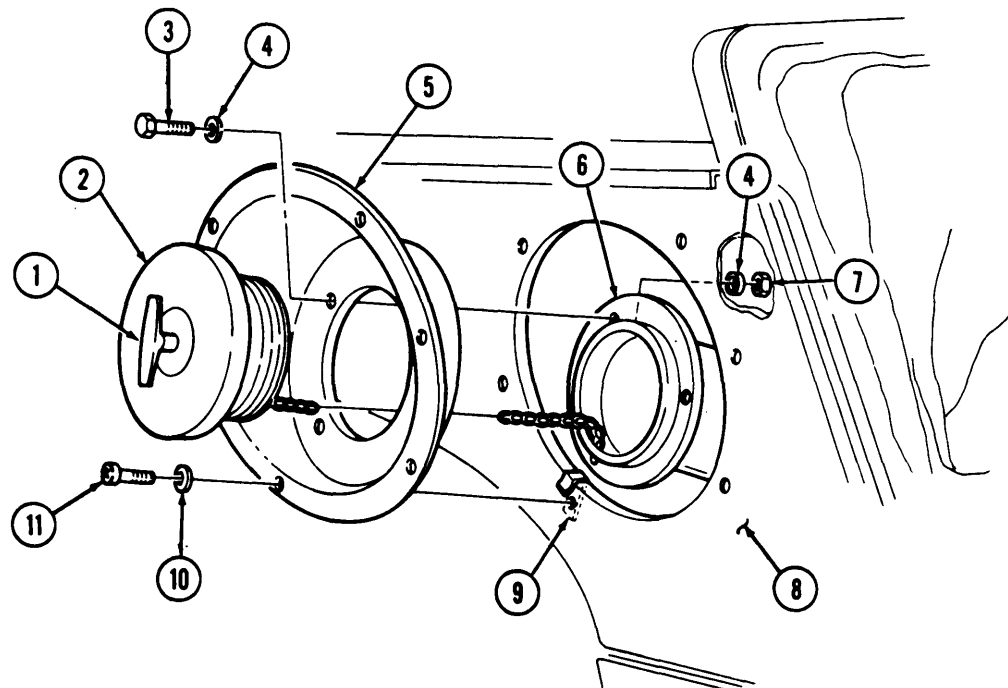
TM 9-2320-280-24P

#### **a. Removal**

1. Remove filler cap "T" handle (1) and filler cap (2) from filler spout (6).
2. Remove three nuts (7), washers (4), capscrews (3), and washers (4) from filler housing (5) and filler spout (6).
3. Remove six screws (11) and washers (10) from fuel filler housing (5) and right outer wheelhouse panel (8).
4. Push filler cap (2) through filler housing (5) and remove filler housing (5).
5. Inspect speed nuts (9) for presence or damage. Replace if defective or missing.

#### **b. Installation**

1. Pull filler cap (2) through filler housing (5) and install housing (5) on right outer wheelhouse panel (8).
2. Secure filler housing (5) to right outer wheelhouse panel (8) with six washers (10) and screw (11).  
Tighten screws (11) to 20 lb-in. (2 N•m).
3. Secure filler housing (5) to filler spout (6) with three washers (4), capscrews (3), washers (4), and nuts (7).
4. Install filler cap (2) on filler spout (6) with "T" bade (1).



---

## 10-3. HOOD LATCH AND BRACKET REPLACEMENT

---

This task covers:

- |                |                 |
|----------------|-----------------|
| a. Removal     | c. Assembly     |
| b. Disassembly | d. Installation |
- 

### INITIAL SETUP:

#### Tools

General mechanic's tool kit:  
automotive (Appendix B, Item 1)

#### Manual References

TM 9-2320-280-10  
TM 9-2320-280-24P

#### Materials/Parts

Seven locknuts (Appendix G, Item 58)  
Cotter pin (Appendix G, Item 21)  
Spring pin (Appendix G, Item 233)

#### Equipment Condition

Hood raised and secured (TM 9-2320-280-10).

---

### a. Removal

#### NOTE

If only the rubber latch is to be replaced, the spring pin does not have to be completely out of base.

1. Remove two locknuts (6), washers (4), capscrews (3), and washers (4) from base (7) and body (5). Discard locknuts (6).
2. Remove spring pin (2) from latch (10) and base (7).
3. Remove two locknuts (16), washers (17), capscrews (12), and latch bracket (13) from hood (15). Discard locknuts (16).
4. Remove three locknuts (18), washers (19), capscrews (21), latch stop bracket (20), and latch plate (14) from hood (15). Discard locknuts (18).

### b. Disassembly

Remove cotter pin (1), pin (8), two rollers (9), and hood latch (11) from latch (10). Discard cotter pin (1).

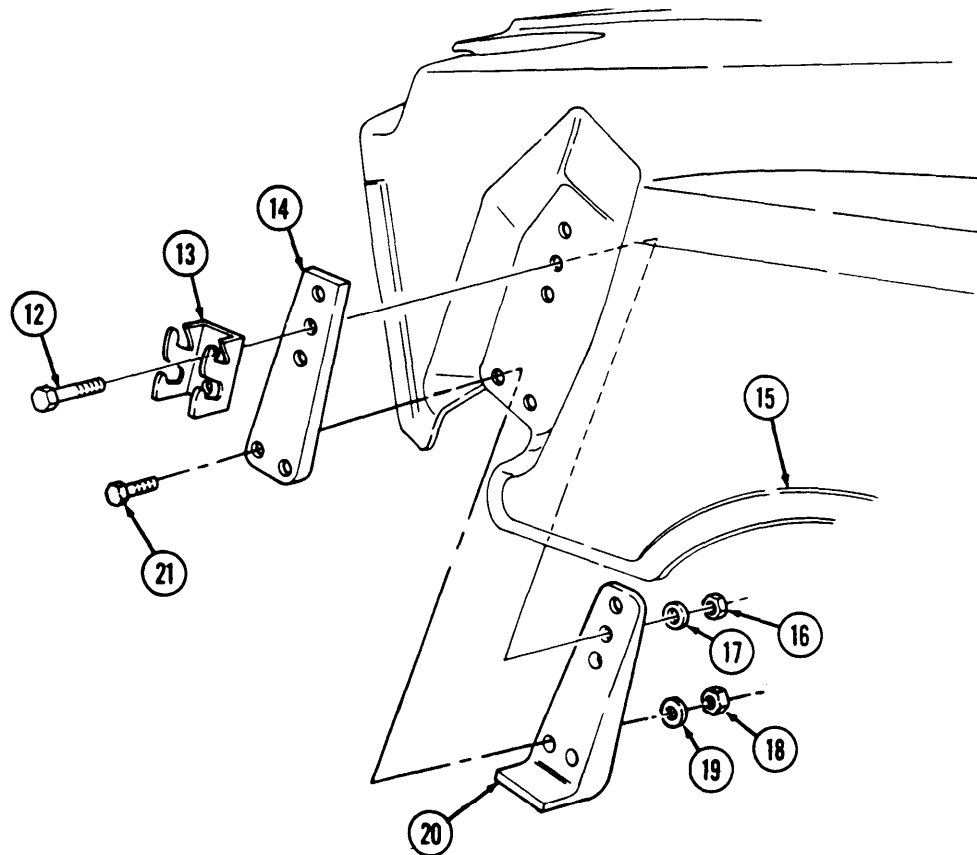
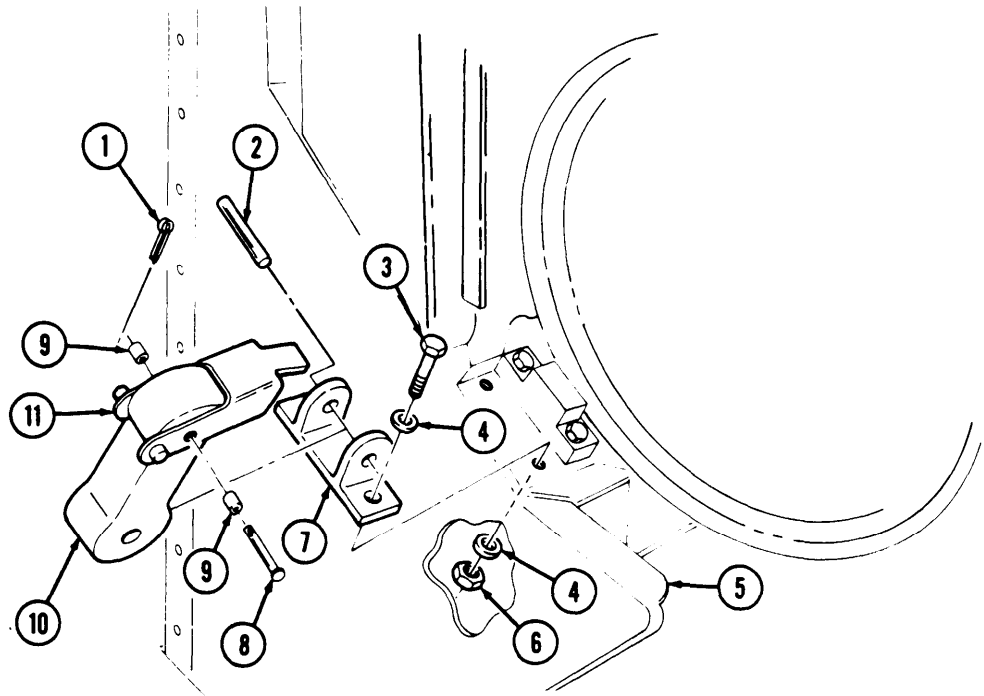
### c. Assembly

Install hood latch (11) on latch (10) with two rollers (9), pin (8), and cotter pin (1).

### d. Installation

1. Install latch plate (14) and latch stop bracket (20) on hood (15) with three capscrews (21), washers (19), and locknuts (18).
2. Install latch bracket (13) on latch plate (14) with two capscrews (12), washers (17), and locknuts (16). Tighten locknuts (16) and (18) to 10 lb-ft (14 N•m).
3. Install latch (10) on base (7) with spring pin (2).
4. Install base (7) on body (5) with two washers (4), capscrews (3), washers (4), and locknuts (6). Tighten capscrews (3) to 6 lb-ft (8 N•m).

10-3. HOOD LATCH AND BRACKET REPLACEMENT (Cont'd)



FOLLOW-ON TASK: **Lower and secure hood** (TM 9-2320-280-10).