



Office of Information Technology

Technical Reference Model

May 1, 2014



[This page intentionally left blank]

Table of Contents

1	Overview	3
1.1	Purpose	3
1.2	Governance	4
2	Classification	5
3	PBGC Integration Architecture.....	8
3.1	PBGC Security.....	9
3.2	Data Integration	10
3.3	Service Integration	10
3.4	Technology Stack	10
4	TRM Update Process	11
5	Standards Profile.....	12
5.1	Definitions.....	12
5.2	User Systems.....	15
5.3	Servers.....	31
5.4	Security	48
5.5	Connectivity	49
5.6	Technology Service Management.....	54
5.7	User Service Management.....	57
5.8	Technology Delivery Support	58
5.9	Enterprise-wide Services & Technologies.....	72
5.10	Storage	83
5.11	Telephony	86
5.12	IT Facilities.....	88

Revision History

Date	Author	Notes
June 10, 2009 - February 18, 2011	Andrew Shatokhin, Richie Stockholm	Archived
March 2, 2011	Andrew Shatokhin	Addressed EA Feedback: replaced grade titles: "recommended" with "current" and "future" with "recommended". Updated text describing valid lifetime of the TRM revisions.
March 8, 2011	Andrew Shatokhin	Updated the versions of trillium and Oracle ApEx products.
March 21, 2011	Andrew Shatokhin	Added the Applications Patterns diagram.
April 20, 2011	Andrew Shatokhin	Updated based on information from ITSCLM reviews.
April 25, 2011	Andrew Shatokhin	Added details on the oracle products from the OIM suite.
May 10, 2011	Andrew Shatokhin	Updated developer test tools category.
May 24, 2011	Andrew Shatokhin	Replaced names of the Contained state with "Increasing Risk" and Deprecated with "Phase Out".
May 25, 2011	Andrew Shatokhin	Added WebCenter components. Renamed Target Conceptual Architecture to the PBGC Integration Architecture in accordance with ETA.
June 17, 2011	Andrew Shatokhin	Corrected footnotes and made the TRM Update section refer to TRB processes. Replaced "Increasing Risk" with "At Risk".
August 7, 2011	Andrew Shatokhin	Combined the "At Risk" and "Phase Out" per EA Team's feedback. Moved items that were in the "Restricted" grade due to historical reasons (e.g., .Net stack technologies) to the "At Risk". Introduced the Update Sensitivity Indicator. Documented the existing grandfathering rule.
August 30, 2011	Andrew Shatokhin	Added Thunderhead Now 5.1 and Riverbed WAN Optimization Controllers (SteelHead, Central Management Console, Steelhead Mobile Controllers) approved by the TRB.
September 9, 2011	Andrew Shatokhin	Changed USI values to the ones provided by TRB.
September 22, 2011	Kirby Sutton	Incorporated SME feedback for USI values of TRM components.
February 1, 2012	Kirby Sutton	Incorporated all updates from TRM Change Log for quarterly update.
May 1, 2012	Kirby Sutton	Incorporated all updates from TRM Change Log for quarterly update.
August 1, 2012	Kirby Sutton	Incorporated all updates from TRM Change Log for quarterly update.

November 1, 2012	Kirby Sutton	Incorporated all updates from TRM Change Log for quarterly update.
February 1, 2013	Peter Nguyen	Incorporated all updates from TRM Change Log for quarterly update.
May 1, 2013	Peter Nguyen	Incorporated all updates from TRM Change Log for quarterly update.
August 1, 2013	Peter Nguyen	Incorporated all updates from TRM Change Log for quarterly update.
November 1, 2013	Peter Nguyen	Delivered all updates from the TRM Rationalization efforts. Also, incorporated all updates from the TRM Change Log quarterly update.
February 1, 2014	Peter Nguyen	Incorporated all updates from TRM Change Log for quarterly update.
May 1, 2014	Peter Nguyen	Incorporated all updates from TRM Change Log for quarterly update.

1 Overview

The Pension Benefit Guaranty Corporation (PBGC) Enterprise Architecture (EA) program aligns the Corporation's information technology (IT) assets with the Corporation's mission, goals, and business functions. The Technical Reference Model (TRM) serves as a blueprint for the IT support role of the mission. The PBGC TRM consists of three major elements:

- **Classification** - the classification is based on real world usage of technology components. Classification is used to categorize the various products used at PBGC and show whether they are recommended for retirement, current, or future use.
- **Standard Profile** - the standard profile is the list of actual hardware, software, and information technology used in PBGC information systems and infrastructure. This profile includes a column that describes what is in use now, a column identifying the target to which future development will migrate, and a column identifying the owner of the IT investment for that particular item.
- **PBGC Integration Architecture** - the integration architecture diagram is a depiction of how the various elements relate to each other in the PBGC environment.

This document lists a lot of protocols, technology items, and products that are often changed or upgraded by the system owners. As a result, the information in this document may be lagging behind the upgrade and update events due to maintenance processes. Readers are advised to contact EA directly if the version or product information found in this document does not match the current configuration in PBGC environment(s).

Project teams must use the latest revision of this document when creating their System Environment Plan.

1.1 Purpose

A Technical Reference Model is a framework that:

- Provides a common conceptual view of IT.
- Establishes a common vocabulary to better describe, compare, and contrast systems and components.
- Provides a consistent set of technology areas, definitions, interfaces, and relationships used to address interoperability and open system issues.
- Serves as a basis (or aid) for the identification, comparison, and selection of existing and emerging standards.

The PBGC TRM provides guidance to enterprise architects, technology managers, developers, and individuals that plan, acquire, develop, or use information systems. The TRM promotes open source design by identifying the relationship between IT components and services. System developers or

system owners can use the TRM to identify types of technologies they will need to enable their systems. By focusing on these technology categories, they can articulate their IT needs at a higher level of abstraction, which avoids linking solutions to specific products or vendors too early in the solution development life cycle (SDLC).

The TRM also establishes a consensus on how to describe, discuss, and relate the many technologies that support the IT infrastructure and enables a common framework for mapping IT investments in the Capital Planning and Investment Control (CPIC) process. This includes tracing investments to the Standards Profile and to the Federal Enterprise Architecture model as required by the Office of Management and Budget (OMB). The OMB EA Assessment Framework calls for mapping technology and investment according to a Technical Reference Model. Using the TRM for these purposes allows PBGC to facilitate a strategic alignment of IT investments, while ensuring a high level of program maturity under the OMB Assessment Framework capabilities model.

1.2 Governance

The PBGC Technical Review Board (TRB) will maintain the PBGC TRM. The TRB will also define and maintain the specific processes and criteria for evaluating compliance with the TRM.

Additionally, the TRB will facilitate the process for updating the language and content of this TRM document. The information that the TRM captures for this governance process is documented in section 5.1.2.

2 Classification

The TRM describes the agency's information technology elements. IT for an agency is complex; it is comprised of multiple domains managed by people with expertise in a variety of domains. To assure that all IT Infrastructure details are captured and to simplify TRM management in the future, the following 11 major categories were identified:

- User Systems
- Servers
- Security
- Connectivity
- Technology Service Management
- User Service Management
- Technology Delivery Support
- Enterprise Services
- Storage
- Telephony
- IT Facilities

The Figure 1 depicts the hierarchical relationships of the various categories.

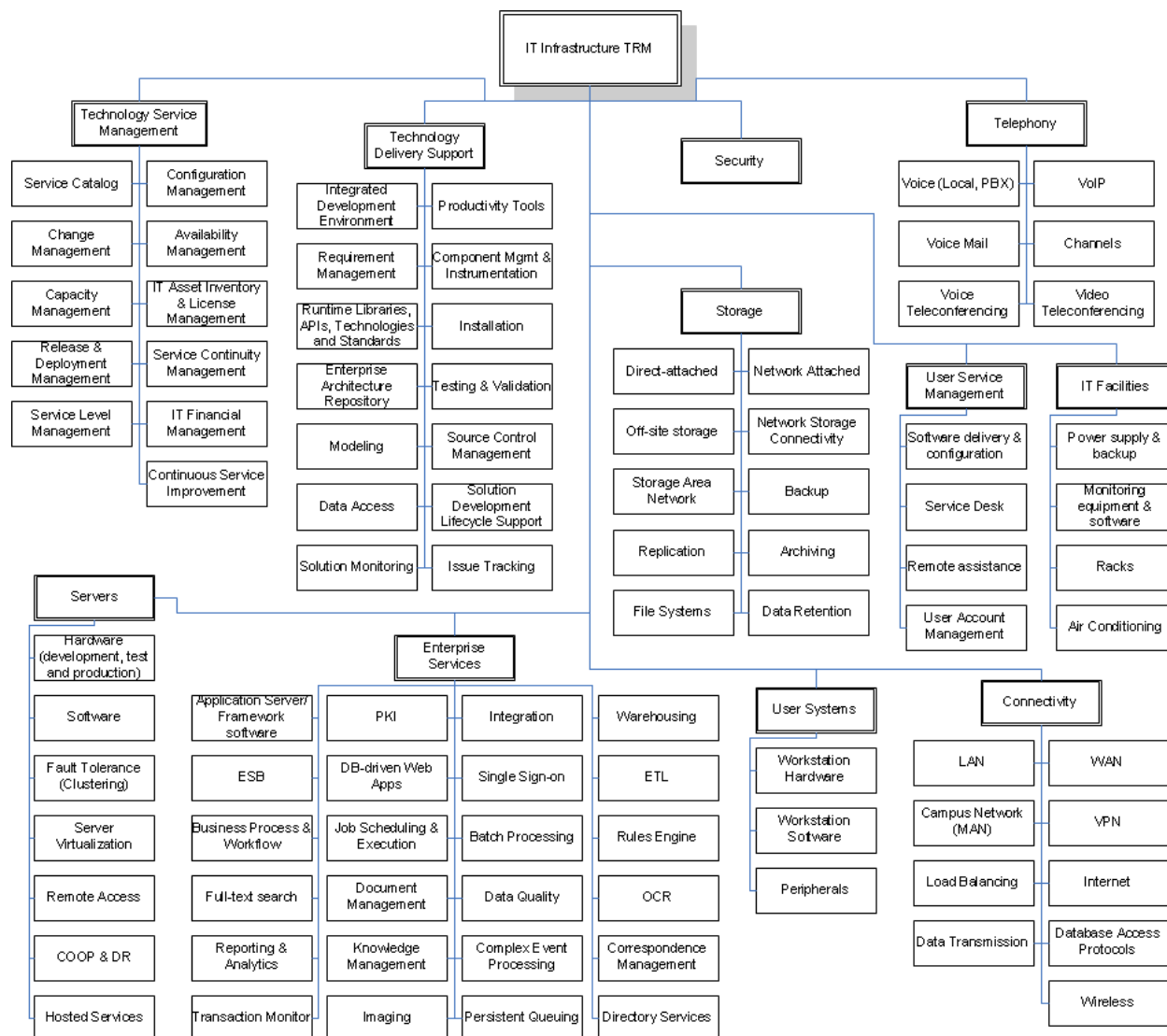


Figure 1 IT Infrastructure major categories and sub-categories

Figure 2 shows the various TRM dependencies. The relationships among the infrastructure technologies are complex but the simplistic view in Figure 2 shows that certain technologies' configuration, maintenance or physical instantiation is determined by the containing technology category.

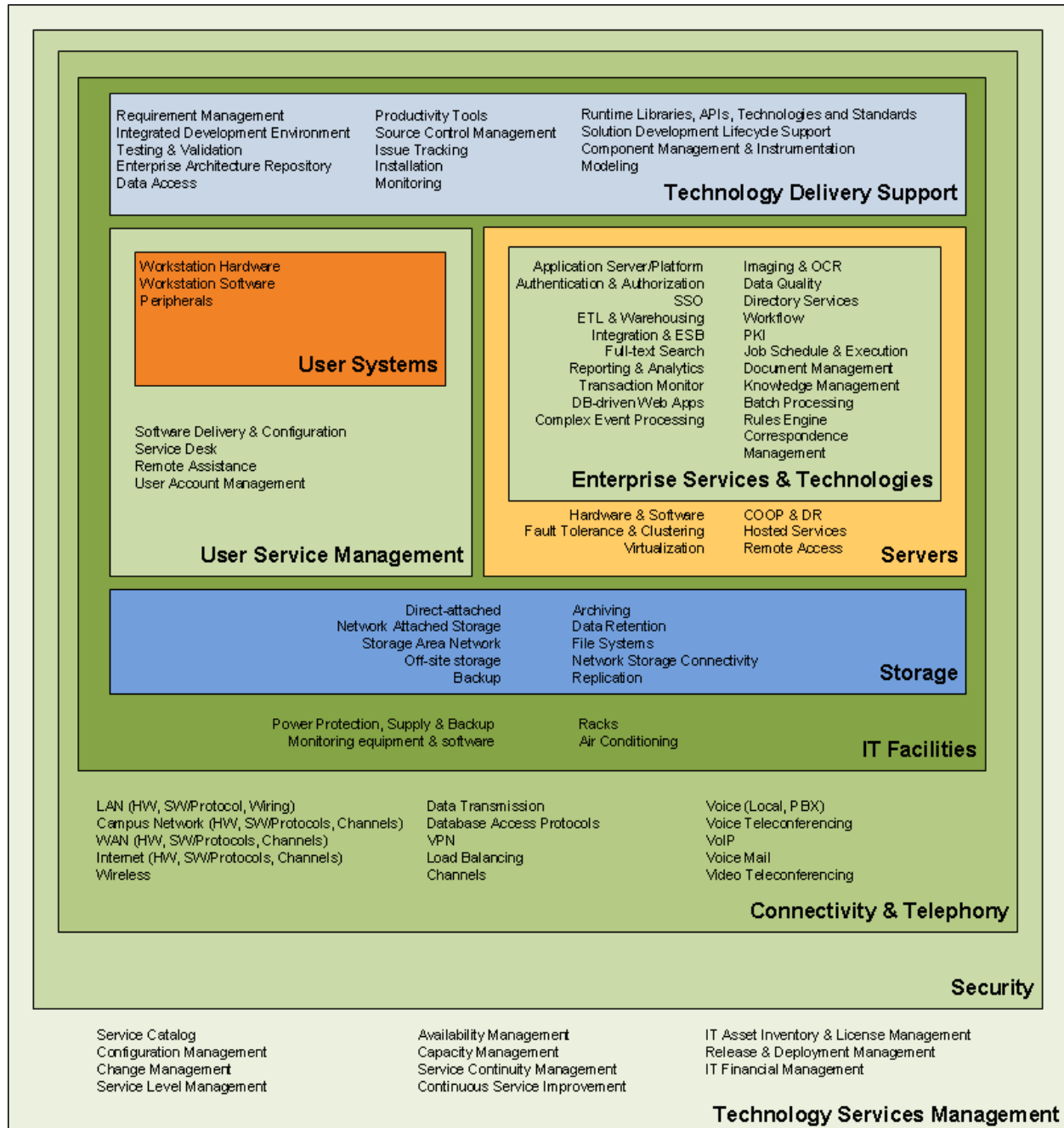


Figure 2 Relationships among the major IT Infrastructure categories

3 PBGC Integration Architecture

Figure 3 depicts the integration architecture for PBGC. A goal of the enterprise architecture is to move PBGC to a service-oriented environment to achieve business goals. The target infrastructure must support the integration of a variety of solution architectures including custom-developed applications, commercial off-the-shelf (COTS) or government off-the-shelf (GOTS) products, and use of Lines of Business (LoB) or Shared Service Providers (SSP). The solutions should also be built or selected with the PBGC integration requirements in mind. Additionally, external entities such as State Street Bank or the Internal Revenue Service must be able to connect and interact with the PBGC infrastructure.

Integration is essential for efficient operations within PBGC. Custom-developed applications should follow a layered approach in system design, taking advantage of enterprise data services, integrating with existing security solutions, and exposing data for reporting. COTS or GOTS products that maintain proprietary data structures, security controls, and business logic must provide mechanisms to enable integration with PBGC enterprise solutions. Any LoB or SSP selected must provide data integration services for reuse in other PBGC applications as well as integration with PBGC security controls.

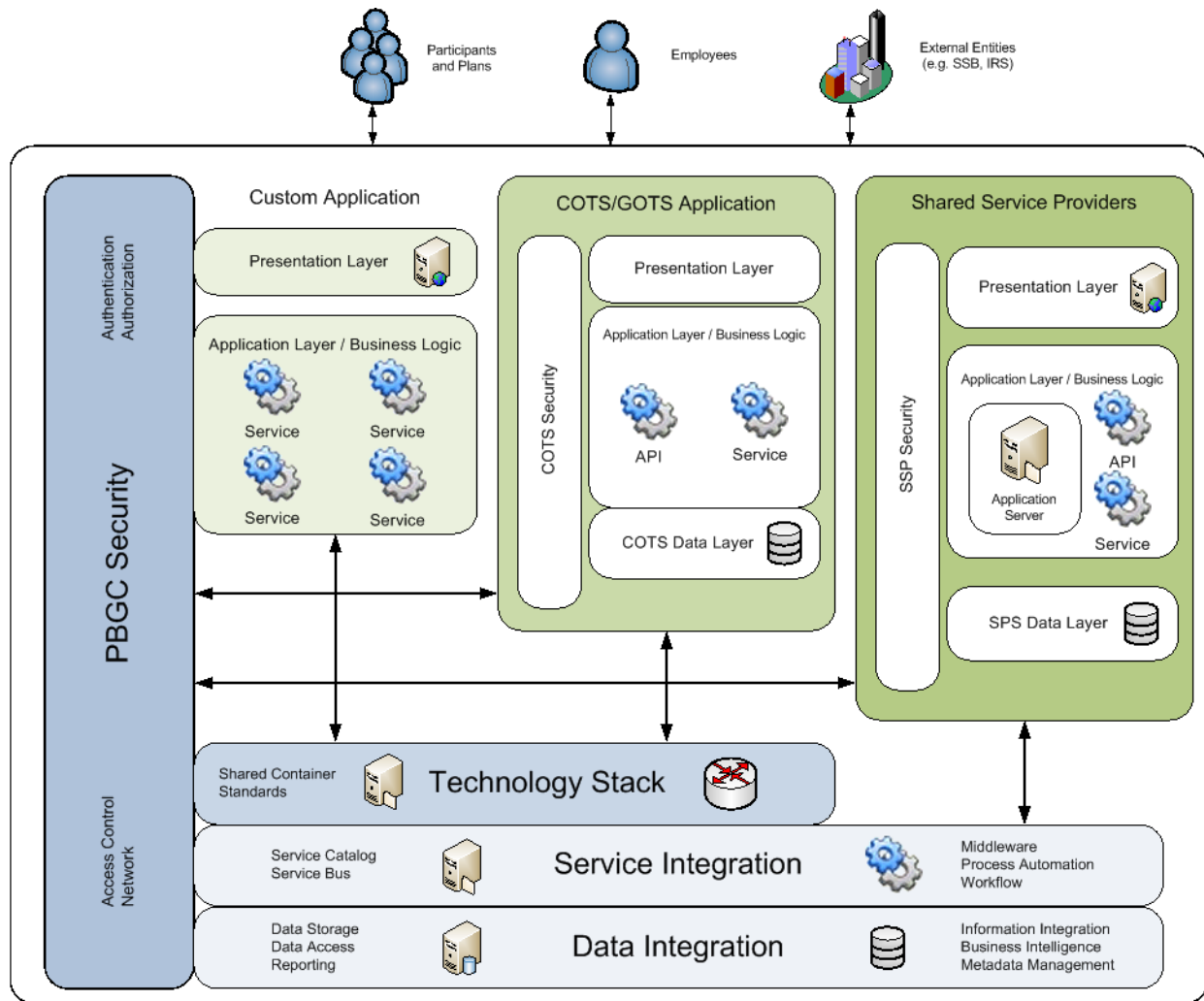


Figure 3 PBGC Integration Architecture

3.1 PBGC Security

PBGC will provide enterprise security controls that will authenticate users and authorize access to solutions deployed at PBGC. Custom Applications must use the enterprise security solutions as the primary mechanism for protecting the application data and services. Shared Service Providers and COTS/GOTS products often have built-in security controls that protect the application's information. The target architecture requires that the built-in controls connect to or be disabled in favor of the PBGC solutions to provide access to the data and services. Physical security will be provided by PBGC for solutions deployed on PBGC premises. Solution providers hosting PBGC data off PBGC premises must demonstrate that security meets federal standards and guidelines described by the National Institute of Standards and Technology.

3.2 Data Integration

Data integration is essential for efficient operations at PBGC. The target architecture diagram depicts that PBGC will provide data storage and access as well as reporting and analytical services. Custom Applications must use the enterprise data storage and access constructs. Shared Service Providers and COTS/GOTS products must provide access to their applications' stored data either directly or through exports, Application Programming Interfaces (APIs), or services so that PBGC can build reports and analytics across all applications.

3.3 Service Integration

To provide flexibility and reuse options PBGC has adopted a service-oriented approach in its architecture. To support this PBGC has and will deploy service-enabling features that automate workflow and system interfaces. All solutions deployed at PBGC must expose functionality through APIs or services where appropriate.

3.4 Technology Stack

Through this document, PBGC has established technology standards that must be adhered to by the infrastructure and solutions. Where necessary, PBGC will deploy containers to host Custom Applications or COTS/GOTS products. All deployed solutions must be able to run on the containers provided by PBGC in accordance with the standards described by the preceding sections.

4 TRM Update Process

TRM is a living document. It will be frequently modified to maintain clear documentation of the PBGC IT environments in its current state as well as to record the future technology vision for PBGC IT.

There are a number of triggering events or reasons why TRM changes will be initiated:

- Segment Architecture recommendations and target state products
- Discovery of current state technology components missing in the TRM
- Technical Review Board (TRB) decision to introduce a new technology
- Business need not currently supported by available technology
- As determined by the Chief Enterprise Architect

The **updates to the TRM document will be done at least quarterly** as approved by the Technical Review Board (TRB) or more often as authorized by the Chief Enterprise Architect.

The Chief Enterprise Architect may authorize Non-Exempting of technology into TRM if provided evidence that this technology had been deployed and used in the PBGC environments before October 28th, 2010 (the TRB charter approval date).

The updates to the TRM are approved by the Technical Review Board (TRB). The procedure for changes in TRM or introduction of new technology into TRM is documented in the TRB Processes and Procedures document (in the “Technical Standards, Technology, and Products Approval Process”).

5 Standards Profile

The following subsections provide details and standards for the PBGC products and technologies used in each of the major categories, their corresponding sub-categories, and their respective IT investments.

Each row in the standards tables in the following subsections represents a technology, protocol or product either available or considered for use in the PBGC IT environments. When known, the IT Investment, which oversees these products throughout their lifecycle (through planning, authorization and funding activities) is also identified. Each of these technology elements is also characterized by its grade and sensitivity for future updates.

The technology components which are not mentioned in the TRM are not allowed in internal production PBGC environments before due analysis and formal decision to include these technologies into the TRM are made. In this case TRM update processes must be followed to request the incorporation of the technology into TRM. This process is documented in section 4.

When an IT Investment responsible for the introduction or maintenance of a product or technology is known, the investment is assigned to the product or technology in the TRM as an “Owner IT Investment”. The owner of the IT Investment oversees the assigned products and technologies in the PBGC environments by planning, funding and/or authorizing projects or activities, which:

- track the status of the product within the product's service life
- maintain the products, including upgrades and patching
- evaluate changes to their products or technologies requested by others and provide feedback as an impacted stakeholder
- follow the TRB Processes and Procedures to update TRM when the change is needed in their products' TRM entries

Project teams are urged to contact EA in the planning phase of the project to review and establish common understanding of the planned technology use throughout the project lifecycle. Teams are then required to reconfirm the technology use plan if any change in the technology is expected.

5.1 Definitions

5.1.1 Grades

Fitness and applicability of the TRM technology elements for use in PBGC systems are summarized via one of the grades described in the table below:

Grade	Description of the grade meaning
Recommended	The technology is part of the PBGC IT target state. It will be assigned to the technologies in the medium-to-long term to advise the development team of

Grade	Description of the grade meaning
	the direction in which PBGC IT is moving and encourage planning and proactive transition to the future state. Development and implementation teams are encouraged to start using the technology (if it is already available) and sponsor implementation of the technology (if it's not available) or include it into their plans.
Current	The technology is part of the current PBGC technology stack. It can be used in currently and in short-term future (up to 24 months) projects to support funding requests and planning decisions. If the technology categorized as "recommended" is identified for the same function, development and implementation teams should (but not required to) start identifying the migration path from this technology to the recommended technology.
"At Risk"	The technology is currently used by the PBGC systems, but it is no longer a recommended or current technology and remains only in the systems until the next significant (non-maintenance) release. Thus the product development teams must identify, plan, document, and follow the migration path from this technology as part of the next non-maintenance release. Other systems developers, architects, program and project managers, which do not currently rely on this technology, must remove "At Risk" technology from their plans. The footprint of this technology in the PBGC systems must constantly go down.
Restricted	The use of this technology is limited by a set of criteria. The criteria may be different for different technology items. This grade is usually used for technologies allowed in PBGC environment only because of their use by the recommended COTS, LOB or other external entities, or contained in the PBGC environment due to historical reasons (e.g., .Net stack technologies). For example, use of the PL/SQL as the programming language may be a requirement of the overarching COTS product and is allowed only in the context of that COTS product. Use of any other recommended or current technology is strongly recommended. Development teams are not required to migrate from the technology as long as their systems are allowed to use the COTS or historical exclusions, but are not allowed to use it in any way conflicting with the set of criteria associated with it.

5.1.2 Update Sensitivity

Introduction of new TRM technologies and updates to the exiting TRM entries are controlled by the TRB processes documented in the TRB procedures document.

TRB procedures propose a simplified process of introducing and approving updates to the existing TRM entries. It is based on the SME's assessment of the possible impact of the TRM entry update to PBGC environments and business applications.

TRM facilitates this simplified process by capturing and storing the SME's impact assessment for each TRM technology in a form of the Update Sensitivity Indicator (USI). The following table defines the allowed values of the Updated Sensitivity Indicator:

USI Value	Criteria for the USI value
N/A	TRM entries may be listed as N/A if they represent products or technologies which cannot have a next version and their upgrades are replacements with completely new products. Examples are monitors, printers, etc. This USI value applies to items that will not be subject to future versioning.
Part of Another Product	TRM entry may be classified "Part of Another Product" if it is not a standalone product, but is deployed as part of another product. All technologies with this USI are dependent on another product with regard to version upgrades and TRB reviews. The version of such a product cannot change without changes in the version of the parent product containing it.
Exempt	TRM entry's USI is "Exempt" (TRB does not need to review any upgrades in products) if USI values above do not apply and all of the following apply: <ul style="list-style-type: none"> • It is a standalone system with no interface or data dependencies with other systems (e.g., utility, independent application) • It is a standalone system which is not a hosting or execution environment of other TRM products • It is used by a single organizational element in its processes (limited impact on business processes and user community)
Non-exempt	TRM entry's USI is "Non-exempt" (all upgrades must be reviewed by TRB) if USI values above do not apply and any of the following apply: <ul style="list-style-type: none"> • TRM Entry is a standard (JMS 1.2 or JMX 1.2) or a protocol (IPv4) • TRM Entry is a product directly used in mission critical processes (benefit payment cycle, benefit recalculation, premium calculation or collection) • Vendor of the product does not follow versioning rules consistently (per SME)
Conditional	All other TRM entries are assigned "Conditional" USI (version updates are conditionally reviewed by the TRB).

The TRB Process and Procedures document provides more details on the procedures required to maintain the USI.

5.2 User Systems

User Systems describe the technologies, standards, and products that end users use in their everyday work. The technology in this category determines the end user's experience and the capability to access the applications and peripheral hardware.

Ref ID	Category	Sub Category	Technology / Protocol / Product	Grade	Update Sensitivity Indicator	Owner
1	Peripherals	Plotter	Hewlett-Packard (HP) Designjet 4500PS	At Risk	N/A	PBGC - IT Infrastructure
2	Peripherals	Plotter	Hewlett-Packard (HP) Designjet 5500PS	At Risk	N/A	PBGC - IT Infrastructure
3	Peripherals	Printers	EPSON Stylus Pro 9800	At Risk	N/A	PBGC - IT Infrastructure
4	Peripherals	Printers	Hewlett-Packard (HP) Color LaserJet 2840	At Risk	N/A	PBGC - IT Infrastructure
5	Peripherals	Printers	Hewlett-Packard (HP) Color LaserJet 3550	At Risk	N/A	PBGC - IT Infrastructure
6	Peripherals	Printers	Hewlett-Packard (HP) Color LaserJet 3600	At Risk	N/A	PBGC - IT Infrastructure
7	Peripherals	Printers	Hewlett-Packard (HP) Color LaserJet 3800	At Risk	N/A	PBGC - IT Infrastructure
8	Peripherals	Printers	Hewlett-Packard (HP) Color LaserJet 4600	At Risk	N/A	PBGC - IT Infrastructure
9	Peripherals	Printers	Hewlett-Packard (HP) Color LaserJet 4650	At Risk	N/A	PBGC - IT Infrastructure
10	Peripherals	Printers	Hewlett-Packard (HP) Color LaserJet 4700	At Risk	N/A	PBGC - IT Infrastructure
11	Peripherals	Printers	Hewlett-Packard (HP) Color LaserJet	At Risk	N/A	PBGC - IT Infrastructure

Ref ID	Category	Sub Category	Technology / Protocol / Product	Grade	Update Sensitivity Indicator	Owner
			5550			
12	Peripherals	Printers	Hewlett-Packard (HP) Color LaserJet 8550	At Risk	N/A	PBGC - IT Infrastructure
13	Peripherals	Printers	Hewlett-Packard (HP) Color LaserJet CP2025dn	At Risk	N/A	PBGC - IT Infrastructure
14	Peripherals	Printers	Hewlett-Packard (HP) Color LaserJet CP3525	At Risk	N/A	PBGC - IT Infrastructure
15	Peripherals	Printers	Hewlett-Packard (HP) Color LaserJet CP4005	At Risk	N/A	PBGC - IT Infrastructure
16	Peripherals	Printers	Hewlett-Packard (HP) Color LaserJet CP4025dn	Current	N/A	PBGC - IT Infrastructure
17	Peripherals	Printers	Hewlett-Packard (HP) Color LaserJet CP4520 Series	At Risk	N/A	PBGC - IT Infrastructure
18	Peripherals	Printers	Hewlett-Packard (HP) Designjet 4500PS	At Risk	N/A	PBGC - IT Infrastructure
19	Peripherals	Printers	Hewlett-Packard (HP) Designjet 5500PS	At Risk	N/A	PBGC - IT Infrastructure
20	Peripherals	Printers	Hewlett-Packard (HP) LaserJet 2300	At Risk	N/A	PBGC - IT Infrastructure
21	Peripherals	Printers	Hewlett-Packard (HP) LaserJet 4000	At Risk	N/A	PBGC - IT Infrastructure
22	Peripherals	Printers	Hewlett-Packard (HP) LaserJet 4050	At Risk	N/A	PBGC - IT Infrastructure
23	Peripherals	Printers	Hewlett-Packard (HP) LaserJet 4250	At Risk	N/A	PBGC - IT Infrastructure
24	Peripherals	Printers	Hewlett-Packard (HP) LaserJet 5100	At Risk	N/A	PBGC - IT Infrastructure
25	Peripherals	Printers	Hewlett-Packard (HP) LaserJet 8000	At Risk	N/A	PBGC - IT Infrastructure
26	Peripherals	Printers	Hewlett-Packard (HP) LaserJet 8100	At Risk	N/A	PBGC - IT Infrastructure
27	Peripherals	Printers	Hewlett-Packard (HP) LaserJet 8150	At Risk	N/A	PBGC - IT Infrastructure

Ref ID	Category	Sub Category	Technology / Protocol / Product	Grade	Update Sensitivity Indicator	Owner
28	Peripherals	Printers	Hewlett-Packard (HP) LaserJet 9000	At Risk	N/A	PBGC - IT Infrastructure
29	Peripherals	Printers	Hewlett-Packard (HP) LaserJet 9050	At Risk	N/A	PBGC - IT Infrastructure
30	Peripherals	Printers	Hewlett-Packard (HP) LaserJet P2035	Recommended	N/A	PBGC - IT Infrastructure
31	Peripherals	Printers	Hewlett-Packard (HP) LaserJet P3005	At Risk	N/A	PBGC - IT Infrastructure
32	Peripherals	Printers	Hewlett-Packard (HP) LaserJet P4015	At Risk	N/A	PBGC - IT Infrastructure
33	Peripherals	Printers	Hewlett-Packard (HP) LaserJet P4515	Current	N/A	PBGC - IT Infrastructure
34	Peripherals	Printers	Ricoh Aficio MP 6001	Current	N/A	Facilities Services Program
35	Peripherals	Printers	Ricoh Remote Office	Current	Conditional	Facilities Services Program
36	Peripherals	Printers	Xerox WorkCentre 5675 v1 Multifunction System	At Risk	N/A	
37	Peripherals	Printers	Xerox WorkCentre 5687 v1 Multifunction System	At Risk	N/A	
38	Peripherals	Scanner	Bell + Howe Scanner 8090	At Risk	N/A	PBGC - Participant Services (Benefit Administration)
39	Peripherals	Scanner	Fujitsu Scanner 5750C	At Risk	N/A	PBGC - Participant Services (Benefit Administration)
40	Peripherals	Scanner	Fujitsu Scanner 5950	Recommended	Non-Exempt	PBGC - Participant Services (Benefit Administration)

Ref ID	Category	Sub Category	Technology / Protocol / Product	Grade	Update Sensitivity Indicator	Owner
						Administration)
41	Peripherals	Scanner	Fujitsu Scanner 6770A	Current	Conditional	PBGC - Consolidated Financial Systems
42	Workstation Hardware	Desktop	Dell Optiplex 380	At Risk	N/A	PBGC - IT Infrastructure
43	Workstation Hardware	Desktop	Dell Optiplex 740	At Risk	N/A	PBGC - IT Infrastructure
44	Workstation Hardware	Desktop	Dell Optiplex 780	Current	N/A	PBGC - IT Infrastructure
45	Workstation Hardware	Desktop	Dell Optiplex GX620	At Risk	N/A	PBGC - IT Infrastructure
46	Workstation Hardware	Desktop	Hewlett-Packard (HP) Compaq DC5850	At Risk	N/A	PBGC - IT Infrastructure
47	Workstation Hardware	Laptop	Dell Latitude 630	At Risk	N/A	PBGC - IT Infrastructure
48	Workstation Hardware	Laptop	Dell Latitude E5410	At Risk	N/A	PBGC - IT Infrastructure
49	Workstation Hardware	Laptop	Dell Latitude E6420	Recommended	N/A	PBGC - IT Infrastructure
50	Workstation Hardware	Monitor	Dell 19" Monitor 1907FPC	At Risk	N/A	PBGC - IT Infrastructure
51	Workstation Hardware	Monitor	Dell 19" Monitor P190S	At Risk	N/A	PBGC - IT Infrastructure
52	Workstation Hardware	Monitor	Dell 19" Monitor UltraSharp 1908FP	At Risk	N/A	PBGC - IT Infrastructure
53	Workstation Hardware	Monitor	Dell 20" Monitor E2009WFP	At Risk	N/A	PBGC - IT Infrastructure
54	Workstation Hardware	Monitor	Dell 20" Monitor E2010HC	At Risk	N/A	PBGC - IT Infrastructure
55	Workstation Hardware	Monitor	Dell 20" Monitor P2011H	At Risk	N/A	PBGC - IT Infrastructure
56	Workstation Hardware	Monitor	Dell 20" Monitor UltraSharp 2009FP	At Risk	N/A	PBGC - IT Infrastructure
57	Workstation Hardware	Monitor	Dell 20.1" Monitor E207WFP	At Risk	N/A	PBGC - IT Infrastructure
58	Workstation Hardware	Monitor	Dell 21.5" Monitor E2211H	Current	N/A	PBGC - IT Infrastructure
59	Workstation	Monitor	Dell 24" Monitor	At Risk	N/A	PBGC - IT

Ref ID	Category	Sub Category	Technology / Protocol / Product	Grade	Update Sensitivity Indicator	Owner
	Hardware		P2411H			Infrastructure
60	Workstation Hardware	Monitor	Samsung SyncMaster 20" Monitor	At Risk	N/A	PBGC - IT Infrastructure
61	Workstation Hardware	Monitor	Samsung SyncMaster 21" Monitor 213T	At Risk	N/A	PBGC - IT Infrastructure
62	Workstation Hardware	Monitor	ViewSonic 18" Monitor VG181B	At Risk	N/A	PBGC - IT Infrastructure
63	Workstation Hardware	Monitor	ViewSonic 19" Monitor VG910S	At Risk	N/A	PBGC - IT Infrastructure
64	Workstation Hardware	Monitor	ViewSonic 20.1" Monitor VG2021M	At Risk	N/A	PBGC - IT Infrastructure
65	Workstation Hardware	Monitor	ViewSonic 20.1" Monitor VG2030m	At Risk	N/A	PBGC - IT Infrastructure
66	Workstation Hardware	Monitor	ViewSonic 20.1" Monitor VP201B	At Risk	N/A	PBGC - IT Infrastructure
67	Workstation Hardware	Monitor	ViewSonic 20.1" Monitor VP201s	At Risk	N/A	PBGC - IT Infrastructure
68	Workstation Hardware	Monitor	ViewSonic 20.1" Monitor VP2030B	At Risk	N/A	PBGC - IT Infrastructure
69	Workstation Hardware	Monitor	ViewSonic 20.1" Monitor VP2030M	At Risk	N/A	PBGC - IT Infrastructure
70	Workstation Hardware	Monitor	ViewSonic 20.1" Monitor VX2000	At Risk	N/A	PBGC - IT Infrastructure
71	Workstation Hardware	Monitor	ViewSonic 21" Monitor G220F	At Risk	N/A	PBGC - IT Infrastructure
72	Workstation Hardware	USB Flash Drive	Kanguru Solutions Defender Elite	At Risk	N/A	PBGC - IT Infrastructure
73	Workstation Hardware	USB Flash Drive	Kingston Data Traveler 410	Current	N/A	PBGC - IT Infrastructure
74	Workstation Software	Accessibility	Freedom Scientific JAWS 8.0	Current	Exempt	PBGC - IT Infrastructure
75	Workstation Software	Collaboration Tools	Author-IT Software Corporation 6.1.15	Recommended	Conditional	PBGC - Participant Services (Benefit Administration)
76	Workstation Software	Collaboration Tools	Author-IT Software Corporation Client 5.1	Current	Conditional	PBGC - Participant Services (Benefit Administration)

Ref ID	Category	Sub Category	Technology / Protocol / Product	Grade	Update Sensitivity Indicator	Owner
77	Workstation Software	Collaboration Tools	Citrix GoToMeeting 4.8	Current	Conditional	PBGC - IT Infrastructure
78	Workstation Software	Collaboration Tools	Citrix GoToMeeting 5.0	Recommended	Conditional	PBGC - IT Infrastructure
79	Workstation Software	Collaboration Tools	Gimmal Compliance Suite (for Microsoft SharePoint)	Recommended	Conditional	PBGC - IT Infrastructure
80	Workstation Software	Collaboration Tools	Mitratech TeamConnect 3.3	Current	Conditional	PBGC - Risk Management Early Warning / Legal Matter Management
81	Workstation Software	Collaboration Tools	Mitratech TeamConnect 3.4	Recommended	Conditional	PBGC - Risk Management Early Warning / Legal Matter Management
82	Workstation Software	Collaboration Tools	Mutare ENS 3.6	Recommended	Conditional	PBGC - IT Infrastructure
83	Workstation Software	Collaboration Tools	Office of Personnel Management (OPM) eDelivery CONNECT:DIRECT FTP+ 1.2.0	Restricted	Exempt	Facilities Services Program
84	Workstation Software	Collaboration Tools	S&P Capital IQ Office Plug-In v 8.5	Recommended	Conditional	PBGC - Risk Management Early Warning / Legal Matter Management
85	Workstation Software	Collaboration Tools	S&P Capital IQ Platform	Recommended	Conditional	PBGC - Risk Management Early Warning / Legal Matter Management
86	Workstation Software	Collaboration Tools	Serena Business Manager 10.1	Current	Conditional	PBGC - IT Infrastructure
87	Workstation Software	Collaboration Tools	Splunk 6	Current	Conditional	PBGC - IT Infrastructure
88	Workstation Software	Collaboration Tools	Vocera Messaging Platform 4.7	Current	Conditional	Facilities Services

Ref ID	Category	Sub Category	Technology / Protocol / Product	Grade	Update Sensitivity Indicator	Owner
						Program
89	Workstation Software	Collaboration Tools	Vocera Messaging Platform 4.8	Current	Conditional	Facilities Services Program
90	Workstation Software	Collaboration Tools	Xceed Streaming Compression Library 1.0.6.0	Recommended	Conditional	PBGC - Risk Management Early Warning / Legal Matter Management
91	Workstation Software	Content Production (including Office Automation Tools)	Adobe Creative Suite 6	Current	Conditional	PBGC - IT Infrastructure
92	Workstation Software	Content Production (including Office Automation Tools)	Adobe Flash Professional CS5.5	Recommended	Conditional	PBGC - IT Infrastructure
93	Workstation Software	Content Production (including Office Automation Tools)	Adobe Photoshop CS3	Current	Conditional	PBGC - IT Infrastructure
94	Workstation Software	Content Production (including Office Automation Tools)	Adobe Photoshop CS5	Recommended	Conditional	PBGC - IT Infrastructure
95	Workstation Software	Content Production (including Office Automation Tools)	Apache OpenOffice 3.3	Restricted	Non-Exempt	Procurement Management Program
96	Workstation Software	Content Production (including Office Automation Tools)	ASAP Utilities 4.29	Current	Non-Exempt	
97	Workstation Software	Content Production (including Office Automation Tools)	Corel WordPerfect Pro 13	At Risk	Conditional	
98	Workstation Software	Content Production (including Office Automation Tools)	Corel WordPerfect® Office X5 Professional	Recommended	Conditional	PBGC - Risk Management Early Warning / Legal Matter

Ref ID	Category	Sub Category	Technology / Protocol / Product	Grade	Update Sensitivity Indicator	Owner
			Edition (v15)			Management
99	Workstation Software	Content Production (including Office Automation Tools)	Helios TextPad 5.2	At Risk	Conditional	
100	Workstation Software	Content Production (including Office Automation Tools)	Helios TextPad 5.4.2	Recommended	Conditional	
101	Workstation Software	Content Production (including Office Automation Tools)	Ingeniux Ingeniux 7	Current	Conditional	Corporate Communications (PBGC.gov & Web-based resources)
102	Workstation Software	Content Production (including Office Automation Tools)	Microsoft Office 2010	Recommended	Conditional	PBGC - IT Infrastructure
103	Workstation Software	Content Production (including Office Automation Tools)	Microsoft Office Enterprise 2007 SP2	Current	Conditional	PBGC - IT Infrastructure
104	Workstation Software	Content Production (including Office Automation Tools)	Microsoft Office Enterprise 2010 SP1	Recommended	Conditional	PBGC - IT Infrastructure
105	Workstation Software	Content Production (including Office Automation Tools)	Microsoft Office Visio 2010 SP1	Recommended	Conditional	PBGC - IT Infrastructure
106	Workstation Software	Content Production (including Office Automation Tools)	Microsoft Office Visio 2007 SP2	Current	Conditional	PBGC - IT Infrastructure
107	Workstation Software	Content Production (including Office Automation Tools)	Redman Solutions RapidRedact 2.39	Current	Conditional	OGC Legal Technologies
108	Workstation Software	Content Production (including Office Automation Tools)	TechSmith Camtasia Studio 5.1	Current	Conditional	

Ref ID	Category	Sub Category	Technology / Protocol / Product	Grade	Update Sensitivity Indicator	Owner
		Automation Tools)				
109	Workstation Software	Content Production including Office Automation Tools	Adobe ColdFusion 5	Current	Conditional	PBGC - IT Infrastructure
110	Workstation Software	Content Production including Office Automation Tools	Netcentric CommonLook Office 1.2.3	Current	Exempt	Corporate Communications (PBGC.gov & Web-based resources)
111	Workstation Software	Content Production including Office Automation Tools	Netcentric CommonLook PDF 4.2.6	Current	Exempt	Corporate Communications (PBGC.gov & Web-based resources)
112	Workstation Software	Local Data Management	Microsoft Access 2010	At Risk	Non-Exempt	PBGC - IT Infrastructure
113	Workstation Software	Local Data Management	Microsoft Excel 2007	Current	Conditional	PBGC - IT Infrastructure
114	Workstation Software	Local Data Management	Microsoft Excel 2010	Recommended	Non-Exempt	PBGC - IT Infrastructure
115	Workstation Software	Messaging Client	International Business Machines (IBM) Lotus Notes 6.5	At Risk	Exempt	
116	Workstation Software	Messaging Client	International Business Machines (IBM) Lotus Notes 7.0	At Risk	Exempt	
117	Workstation Software	Messaging Client	Microsoft Outlook 2007 Service Pack 2007 Service Pack (SP)2	Current	Conditional	PBGC - IT Infrastructure
118	Workstation Software	Messaging Client	Microsoft Outlook 2010 Service Pack 2010 Service Pack (SP)1	Recommended	Conditional	PBGC - IT Infrastructure
119	Workstation Software	Messaging Client	Microsoft Outlook Web App (OWA) 2007	Current	Conditional	PBGC - IT Infrastructure
120	Workstation	Messaging Client	Microsoft Outlook	Recommended	Conditional	PBGC - IT

Ref ID	Category	Sub Category	Technology / Protocol / Product	Grade	Update Sensitivity Indicator	Owner
	Software		Web App (OWA) 2010			Infrastructure
121	Workstation Software	Messaging Protocol	Messaging Application Programming Interface (MAPI)	Current	Part of Another Product	PBGC - IT Infrastructure
122	Workstation Software	OS	Microsoft Windows 7 Enterprise SP1	Current	Conditional	PBGC - IT Infrastructure
123	Workstation Software	OS	Microsoft Windows Preinstallation Environment (PE)	Current	Exempt	PBGC - IT Infrastructure
124	Workstation Software	OS	Microsoft Windows XP Professional SP 3	At Risk	Conditional	PBGC - IT Infrastructure
125	Workstation Software	Remote Access Protocol	Citrix Independent Computing Architecture (ICA) 10.2	Restricted	Non-Exempt	PBGC - IT Infrastructure
126	Workstation Software	Remote Access Protocol	Citrix Presentation Server Client 10.2	At Risk	Conditional	PBGC - IT Infrastructure
127	Workstation Software	Remote Access Protocol	Citrix Receiver 4.x	Current	Exempt	PBGC - IT Infrastructure
128	Workstation Software	Remote Access Protocol	Hummingbird Exceed 2008	Current	Conditional	PBGC - IT Infrastructure
129	Workstation Software	Remote Access Protocol	Juniper Terminals Server Client 7.0.0.16007	Current	Conditional	PBGC - IT Infrastructure
130	Workstation Software	Remote Access Protocol	Microsoft Remote Desktop Client 6.1.7600.16722	At Risk	Exempt	PBGC - IT Infrastructure
131	Workstation Software	Remote Access Protocol	Microsoft Remote Desktop Client 6.1.7601.17514	Current	Exempt	PBGC - IT Infrastructure
132	Workstation Software	Remote Access Protocol	Microsoft Remote Desktop Client 8.1	Current	Exempt	PBGC - IT Infrastructure
133	Workstation Software	Remote Access Protocol	Microsoft Remote Desktop Protocol (RDP) V8.0	Current	Non-Exempt	PBGC - IT Infrastructure
134	Workstation	Remote Access	Microsoft X	Current	Non-Exempt	PBGC - IT

Ref ID	Category	Sub Category	Technology / Protocol / Product	Grade	Update Sensitivity Indicator	Owner
	Software	Protocol	Windows			Infrastructure
135	Workstation Software	Remote Access Protocol	PuTTY .61	Current	Exempt	PBGC - IT Infrastructure
136	Workstation Software	Remote Access Protocol	Secure Shell (SSH)	Current	Conditional	PBGC - IT Infrastructure
137	Workstation Software	Remote Access Protocol	Secure Shell (SSH) v3.2	Current	Non-Exempt	PBGC - IT Infrastructure
138	Workstation Software	Server Administration Tools and Technologies	Adlib Express 4.12	Recommended	Conditional	PBGC - IT Infrastructure
139	Workstation Software	Server Administration Tools and Technologies	Quest ActiveRoles Server 6.7	Current	Conditional	PBGC - IT Infrastructure
140	Workstation Software	Server Administration Tools and Technologies	Quest Knowledge Portal 2.6	Current	Conditional	PBGC - IT Infrastructure
141	Workstation Software	Server Administration Tools and Technologies	Vmware View V5	Recommended	Conditional	PBGC - IT Infrastructure
142	Workstation Software	Supporting software	ACL Data Analysis Application 10.5.1	Current	Conditional	
143	Workstation Software	Supporting software	ACL Data Analysis Application 9.1.0	At Risk	Conditional	
144	Workstation Software	Supporting software	Adlib Adlib Express 4.10	Recommended	Conditional	PBGC - IT Infrastructure
145	Workstation Software	Supporting software	Apache JMeter v.2.9	Current	Exempt	PBGC - IT Infrastructure
146	Workstation Software	Supporting software	CheckPoint Media Encryption Client 4.97	Current	Conditional	PBGC - IT Infrastructure
147	Workstation Software	Supporting software	CheckPoint Media Encryption Client R71 hotfix 01	Recommended	Conditional	PBGC - IT Infrastructure
148	Workstation Software	Supporting software	CogniView PDF2XL Enterprise 5.0	Recommended	Conditional	PBGC - Participant Services (Benefit Administration)

Ref ID	Category	Sub Category	Technology / Protocol / Product	Grade	Update Sensitivity Indicator	Owner
149	Workstation Software	Supporting software	Corel WinZip 17.5	At Risk	Conditional	PBGC - IT Infrastructure
150	Workstation Software	Supporting software	Corel WinZip 18	Current	Conditional	PBGC - IT Infrastructure
151	Workstation Software	Supporting software	GPO-PKI	Restricted	Conditional	Human Resources Program
152	Workstation Software	Supporting software	Hyperionics HyperSnap DX 3.11	At Risk	Non-Exempt	PBGC - IT Infrastructure
153	Workstation Software	Supporting software	KOFAX Virtual ReScan (VRS) 4.5	At Risk	Conditional	PBGC - Risk Management Early Warning / Legal Matter Management
154	Workstation Software	Supporting software	Kofax Virtual ReScan (VRS) 5.1	Current	Conditional	PBGC - Risk Management Early Warning / Legal Matter Management
155	Workstation Software	Supporting software	Nero Ahead Nero 10.0	Recommended	Conditional	PBGC - IT Infrastructure
156	Workstation Software	Supporting software	Nero Ahead Nero 8.3	Current	Conditional	PBGC - IT Infrastructure
157	Workstation Software	Supporting software	Price Waterhouse Coopers (PWC) TEAMMATE Version 8.05	At Risk	Conditional	
158	Workstation Software	Supporting software	Quest Software/Dell Toad 12	Recommended	Conditional	PBGC - IT Infrastructure
159	Workstation Software	Supporting software	Si International, Inc. Statisticard 4.3.8.1	Recommended	Conditional	Facilities Services Program
160	Workstation Software	Supporting software	Sybase Infomaker 7	At Risk	Non-Exempt	
161	Workstation Software	Supporting software	Symantec Antivirus 11.07	Current	Conditional	PBGC - IT Infrastructure
162	Workstation Software	Supporting software	Symantec Antivirus 12.1	Recommended	Conditional	PBGC - IT Infrastructure
163	Workstation Software	Supporting software	TechSmith SnagIt 10.01	Recommended	Conditional	PBGC - IT Infrastructure

Ref ID	Category	Sub Category	Technology / Protocol / Product	Grade	Update Sensitivity Indicator	Owner
164	Workstation Software	Supporting software	TechSmith Snagit 8.23	Current	Conditional	PBGC - IT Infrastructure
165	Workstation Software	Supporting software	Thornsoft ClipMate 5.3	At Risk	Conditional	PBGC - IT Infrastructure
166	Workstation Software	User System Management Admin Tools	Altiris Admin Console 6.5.1144	Current	Conditional	PBGC - IT Infrastructure
167	Workstation Software	User System Management Admin Tools	Altiris Admin Console 7.1	Recommended	Conditional	PBGC - IT Infrastructure
168	Workstation Software	User System Management Admin Tools	Altiris Agent 6.0	Current	Conditional	PBGC - IT Infrastructure
169	Workstation Software	User System Management Admin Tools	Altiris Agent 7.1	Recommended	Conditional	PBGC - IT Infrastructure
170	Workstation Software	User System Management Admin Tools	Altiris Application Metering Agent 6.1.31	Current	Conditional	PBGC - IT Infrastructure
171	Workstation Software	User System Management Admin Tools	Altiris Carbon Copy Solution Agent 6.2.1136	Current	Conditional	PBGC - IT Infrastructure
172	Workstation Software	User System Management Admin Tools	Altiris Client Management Suite 7.1	Recommended	Conditional	PBGC - IT Infrastructure
173	Workstation Software	User System Management Admin Tools	Altiris Deployment Server 6.9 SP3	Current	Exempt	PBGC - IT Infrastructure
174	Workstation Software	User System Management Admin Tools	Altiris Notification Server 6.0 SP3	Current	Conditional	PBGC - IT Infrastructure
175	Workstation Software	User System Management Admin Tools	Altiris Software Delivery Portal 6.1	Current	Part of Another Product	PBGC - IT Infrastructure
176	Workstation Software	User System Management Admin Tools	Altiris Software Delivery Solution Agent 6.1.1016	Current	Conditional	PBGC - IT Infrastructure
177	Workstation Software	User System Management Admin Tools	Altiris Task Synchronization Agent 6.1.1030	Current	Conditional	PBGC - IT Infrastructure
178	Workstation	User System	Lucent VitalQIP 6.2	At Risk	Exempt	PBGC - IT

Ref ID	Category	Sub Category	Technology / Protocol / Product	Grade	Update Sensitivity Indicator	Owner
	Software	Management Admin Tools				Infrastructure
179	Workstation Software	User System Management Admin Tools	Lucent VitalQIP 7.3	At Risk	Exempt	PBGC - IT Infrastructure
180	Workstation Software	User System Management Admin Tools	Microsoft FileMon 7.04	At Risk	Exempt	PBGC - IT Infrastructure
181	Workstation Software	User System Management Admin Tools	Microsoft Group Policy Management Console 6.0.0.1	At Risk	Part of Another Product	PBGC - IT Infrastructure
182	Workstation Software	User System Management Admin Tools	Microsoft Group Policy Management Console 8.1	Current	Part of Another Product	PBGC - IT Infrastructure
183	Workstation Software	User System Management Admin Tools	Microsoft Process Monitor 2.96	Current	Exempt	PBGC - IT Infrastructure
184	Workstation Software	User System Management Admin Tools	Microsoft RegMon 7.04	At Risk	Exempt	PBGC - IT Infrastructure
185	Workstation Software	User System Management Admin Tools	Microsoft Windows Server Update Services (WSUS) 3.0 SP2	Current	Exempt	PBGC - IT Infrastructure
186	Workstation Software	User System Management Admin Tools	Microsoft Windows Server Update Services (WSUS) Admin Console 3.0 SP2	Current	Exempt	PBGC - IT Infrastructure
187	Workstation Software	User System Management Admin Tools	SysInternals BGInfo 4.16	Current	Conditional	PBGC - IT Infrastructure
188	Workstation Software	User System Management Admin Tools	Wise Package Studio 7 SP2	Current	Exempt	PBGC - IT Infrastructure
189	Workstation Software	Visualization (including Browser)	Adobe Distiller 4	At Risk	Conditional	PBGC - IT Infrastructure
190	Workstation	Visualization	Adobe Jet-Forms	At Risk	Conditional	PBGC - IT

Ref ID	Category	Sub Category	Technology / Protocol / Product	Grade	Update Sensitivity Indicator	Owner
	Software	(including Browser)	Filler 5.26			Infrastructure
191	Workstation Software	Visualization (including Browser)	Adobe LiveCycle Designer 9	Recommended	Conditional	PBGC - IT Infrastructure
192	Workstation Software	Visualization (including Browser)	Adobe SVG Viewer 3.03	At Risk	Non-Exempt	
193	Workstation Software	Visualization (including Browser)	Avantstar Quick View Plus 11	At Risk	Conditional	OGC Legal Technologies
194	Workstation Software	Visualization (including Browser)	Avantstar Quick View Plus 12	Current	Conditional	OGC Legal Technologies
195	Workstation Software	Visualization (including Browser)	GhostScript GNU 8.54	Current	Conditional	PBGC - IT Infrastructure
196	Workstation Software	Visualization (including Browser)	International Business Machines (IBM) Lotus 123 5.0	At Risk	Non-Exempt	PBGC - Benefit Calculation and Valuation
197	Workstation Software	Visualization (including Browser)	Microsoft Internet Explorer 7	At Risk	Conditional	PBGC - IT Infrastructure
198	Workstation Software	Visualization (including Browser)	Microsoft Internet Explorer 8	At Risk	Conditional	PBGC - IT Infrastructure
199	Workstation Software	Visualization (including Browser)	Microsoft Internet Explorer 9 (W3C Standards Only)	Recommended	Conditional	PBGC - IT Infrastructure
200	Workstation Software	Visualization (including Browser)	Microsoft Silverlight 4.x	Recommended	Exempt	PBGC - IT Infrastructure
201	Workstation Software	Visualization (including Browser)	Microsoft Visio Viewer 12	Current	Conditional	PBGC - IT Infrastructure
202	Workstation Software	Visualization (including Browser)	Microsoft Visio Viewer 2010 Service Pack (SP)1	Recommended	Conditional	PBGC - IT Infrastructure
203	Workstation Software	Visualization (including Browser)	Mozilla Firefox 3.5	Restricted	Conditional	PBGC - IT Infrastructure

Ref ID	Category	Sub Category	Technology / Protocol / Product	Grade	Update Sensitivity Indicator	Owner
		Browser)				
204	Workstation Software	Visualization (including Browser)	Mozilla Firefox 3.6	Restricted	Conditional	PBGC - IT Infrastructure
205	Workstation Software	Visualization (including Browser)	RealNetworks RealPlayer 11	Current	Conditional	PBGC - IT Infrastructure
206	Workstation Software	Visualization (including Browser)	SAP Business Objects Crystal Reports Dev 11.0	Current	Conditional	PBGC - IT Infrastructure
207	Workstation Software	Visualization (including Browser)	SAP Business Objects Crystal Reports Pro 11.0	Current	Conditional	PBGC - IT Infrastructure
208	Workstation Software	Visualization (including Browser)	SAP Business Objects Crystal Reports Viewer 8.5	At Risk	Conditional	PBGC - IT Infrastructure
209	Workstation Software	Visualization including Browser	Adobe Acrobat Reader 10	At Risk	Conditional	PBGC - IT Infrastructure
210	Workstation Software	Visualization including Browser	Adobe Acrobat Reader 11	Recommended	Conditional	PBGC - IT Infrastructure
211	Workstation Software	Visualization including Browser	Adobe Acrobat X Pro	Recommended	Conditional	PBGC - IT Infrastructure
212	Workstation Software	Visualization including Browser	Adobe Acrobat XI Pro	At Risk	Conditional	PBGC - IT Infrastructure
213	Workstation Software	Visualization including Browser	Adobe Flash Player 11	Recommended	Conditional	PBGC - IT Infrastructure
214	Workstation Software	Visualization including Browser	Adobe SiteCatalyst	Current	Conditional	Corporate Communications (PBGC.gov & Web-based resources)
215	Workstation Software	Visualization including Browser	kCura Relativity Viewer 7.4	Current	Exempt	
216	Workstation Software	Visualization including Browser	Luminex CD Viewer 1.13 for Windows 7	Recommended	Conditional	
217	Workstation Software	Visualization including Browser	Luminex CDViewer 5.53	Recommended	Conditional	PBGC - Consolidated Financial Systems
218	Workstation	Visualization	Microsoft Internet	Current	Conditional	PBGC - IT

Ref ID	Category	Sub Category	Technology / Protocol / Product	Grade	Update Sensitivity Indicator	Owner
	Software	including Browser	Explorer 10			Infrastructure
219	Workstation Software	Visualization including Browser	Microsoft Internet Explorer 11	Recommended	Conditional	PBGC - IT Infrastructure
220	Workstation Software	Visualization including Browser	Price Waterhouse Coopers (PWC) TEAMMATE 10.3	Current	Conditional	
221	Workstation Software	Visualization including Browser	Sheridan 2	Current	Conditional	

5.3 Servers

The Servers category includes hardware and foundational software designated for simultaneous access or use by multiple users and applications. It also includes the system tools and administration applications for general maintenance and support as well as for ensuring high availability and efficiency of use of the resources. Technology pertaining to the Servers category may also provide an execution environment for the business applications.

Ref ID	Category	Sub Category	Technology / Protocol / Product	Grade	Update Sensitivity Indicator	Owner
1	Blade Infrastructure	Blade Infrastructure	Hewlett-Packard (HP) BladeSystem c-Class Small Form-Factor Pluggable 10GbE Copper Cable (487655-B21)	Current	Conditional	PBGC - IT Infrastructure
2	Blade Infrastructure	Blade Infrastructure	Hewlett-Packard (HP) BLc Virtual Connect 1Gb RJ-45 Small Form Factor Pluggable Option Kit (CAT 6 GBIC)	Current	Conditional	PBGC - IT Infrastructure
3	Blade Infrastructure	Blade Infrastructure	Hewlett-Packard (HP) Chassis C7000 G1	Current	Conditional	PBGC - IT Infrastructure
4	Blade Infrastructure	Blade Infrastructure	Hewlett-Packard (HP) Chassis C7000 G2	Current	Conditional	PBGC - IT Infrastructure

Ref ID	Category	Sub Category	Technology / Protocol / Product	Grade	Update Sensitivity Indicator	Owner
5	Blade Infrastructure	Blade Infrastructure	Hewlett-Packard (HP) Ethernet Pass-Thru Module 1Gb	At Risk	Non-Exempt	PBGC - IT Infrastructure
6	Blade Infrastructure	Blade Infrastructure	Hewlett-Packard (HP) Onboard Administrator with KVM Option - remote management adapter	Current	Exempt	PBGC - IT Infrastructure
7	Blade Infrastructure	Blade Infrastructure	Hewlett-Packard (HP) SFP (mini-GBIC) transceiver module - plug-in module (FC SAN GBIC)	Current	Conditional	PBGC - IT Infrastructure
8	Blade Infrastructure	Blade Infrastructure	Hewlett-Packard (HP) SFP+ transceiver module (10 GB Fiber GBIC) (455883-B21)	Current	Conditional	PBGC - IT Infrastructure
9	Blade Infrastructure	Blade Infrastructure	Hewlett-Packard (HP) Virtual Connect 1/10Gbit Ethernet Module	At Risk	Non-Exempt	PBGC - IT Infrastructure
10	Blade Infrastructure	Blade Infrastructure	Hewlett-Packard (HP) Virtual Connect Fibre Channel Module	At Risk	Non-Exempt	PBGC - IT Infrastructure
11	Blade Infrastructure	Blade Infrastructure	Hewlett-Packard (HP) Virtual Connect Flex-10 10Gb Ethernet Module	At Risk	Non-Exempt	PBGC - IT Infrastructure
12	Blade Infrastructure	Blade Infrastructure	Hewlett-Packard (HP) Virtual Connect FlexFabric 10Gb/24-Port Module	Current	Conditional	PBGC - IT Infrastructure
13	Blade	Blade Servers	Hewlett-Packard	At Risk	Non-Exempt	PBGC - IT

Ref ID	Category	Sub Category	Technology / Protocol / Product	Grade	Update Sensitivity Indicator	Owner
	Infrastructure		(HP) ProLiant BL460c G1			Infrastructure
14	Blade Infrastructure	Blade Servers	Hewlett-Packard (HP) ProLiant BL460c G6	At Risk	Conditional	PBGC - IT Infrastructure
15	Blade Infrastructure	Blade Servers	Hewlett-Packard (HP) ProLiant BL460c G7	Current	Conditional	PBGC - IT Infrastructure
16	Blade Infrastructure	Blade Servers	Hewlett-Packard (HP) ProLiant BL680c G5	At Risk	Non-Exempt	PBGC - IT Infrastructure
17	COOP and DR	File System Replication	Microsoft Distributive File System - Replication (DFS-R)	Current	Part of Another Product	PBGC - IT Infrastructure
18	COOP and DR	Messaging	Microsoft Exchange Database Availability Groups (DAG) 2010	Current	Part of Another Product	PBGC - IT Infrastructure
19	COOP and DR	SAN Storage Replication	Hitachi TrueCopy 1-23-03-08	Current	Exempt	PBGC - IT Infrastructure
20	Hardware development test and production	Network Time	Spectracom Netclock 9383 NTP Appliance	Current	Conditional	PBGC - IT Infrastructure
21	Hardware development test and production	Remote Access	Juniper SSL VPN Appliance SA Series SA6500	Current	Conditional	PBGC - IT Infrastructure
22	Hardware development test and production	Servers	Hewlett-Packard (HP) Integrated Lights Out (ILO) v2	At Risk	Exempt	PBGC - IT Infrastructure
23	Hardware development test and production	Servers	Hewlett-Packard (HP) Integrated Lights Out (ILO) v3	Current	Exempt	PBGC - IT Infrastructure
24	Hardware development test and production	Servers	Hewlett-Packard (HP) ProLiant DL360 G4	At Risk	Non-Exempt	PBGC - IT Infrastructure
25	Hardware development test and production	Servers	Hewlett-Packard (HP) ProLiant DL360 G5	At Risk	Non-Exempt	PBGC - IT Infrastructure
26	Hardware	Servers	Hewlett-Packard	At Risk	Non-Exempt	PBGC - IT

Ref ID	Category	Sub Category	Technology / Protocol / Product	Grade	Update Sensitivity Indicator	Owner
	development test and production		(HP) ProLiant DL360 G6			Infrastructure
27	Hardware development test and production	Servers	Hewlett-Packard (HP) ProLiant DL360 G7	Current	Conditional	PBGC - IT Infrastructure
28	Hardware development test and production	Servers	Hewlett-Packard (HP) ProLiant DL360 G8	Current	Conditional	PBGC - IT Infrastructure
29	Hardware development test and production	Servers	Hewlett-Packard (HP) ProLiant DL380 G4	At Risk	Non-Exempt	PBGC - IT Infrastructure
30	Hardware development test and production	Servers	Hewlett-Packard (HP) ProLiant DL380 G5	At Risk	Non-Exempt	PBGC - IT Infrastructure
31	Hardware development test and production	Servers	Hewlett-Packard (HP) ProLiant DL380 G7	At Risk	Non-Exempt	PBGC - IT Infrastructure
32	Hardware development test and production	Servers	Hewlett-Packard (HP) ProLiant DL380 G8	Current	Conditional	PBGC - IT Infrastructure
33	Hardware development test and production	Servers	Hewlett-Packard (HP) ProLiant DL580 G3	At Risk	Conditional	PBGC - IT Infrastructure
34	Hardware development test and production	Servers	Hewlett-Packard (HP) ProLiant DL580 G7	Recommended	Non-Exempt	PBGC - IT Infrastructure
35	Hardware development test and production	Servers	Hewlett-Packard (HP) ProLiant DL580 G8	Current	Conditional	PBGC - IT Infrastructure
36	Hardware development test and production	Servers	Hewlett-Packard (HP) ProLiant DL585 G6	Current	Conditional	PBGC - IT Infrastructure
37	Hardware development test and production	Servers	Oracle SPARC Enterprise Server M3000	At Risk	Non-Exempt	PBGC - IT Infrastructure
38	Hardware development test and production	Servers	Oracle SPARC Enterprise Server M5000	At Risk	Non-Exempt	PBGC - IT Infrastructure
39	Hardware development test and production	Servers	Oracle SPARC Enterprise Server M8000	At Risk	Non-Exempt	PBGC - IT Infrastructure

Ref ID	Category	Sub Category	Technology / Protocol / Product	Grade	Update Sensitivity Indicator	Owner
40	Hardware development test and production	Servers	Oracle Sun Netra X1	At Risk	Non-Exempt	PBGC - IT Infrastructure
41	Hardware development test and production	Servers	Oracle SunFire V240	At Risk	Non-Exempt	PBGC - IT Infrastructure
42	Hardware development test and production	Servers	Oracle SunFire V490	At Risk	Non-Exempt	PBGC - IT Infrastructure
43	Hardware development test and production	Servers	Oracle SunFire V890	Current	Exempt	PBGC - IT Infrastructure
44	High Availability Fault Tolerance	Application	Oracle Application Server 10g OC4J clustering; content switching	Current	Conditional	PBGC - IT Infrastructure
45	High Availability Fault Tolerance	Application	Oracle Weblogic Server Clustering 11g	Recommended	Conditional	PBGC - IT Infrastructure
46	High Availability Fault Tolerance	File System Management	Symantec Storage Foundation 5.0	Current	Conditional	PBGC - IT Infrastructure
47	High Availability Fault Tolerance	Hardware	Hitachi RaidManager CCI 1-23-03-08	Current	Exempt	PBGC - IT Infrastructure
48	High Availability Fault Tolerance	Hardware	Link Aggregation Control Protocol (LACP)	Current	Conditional	PBGC - IT Infrastructure
49	High Availability Fault Tolerance	Hardware	NIC Teaming	Current	Conditional	PBGC - IT Infrastructure
50	High Availability Fault Tolerance	Hardware	Redundant Power Supplies	Current	Conditional	PBGC - IT Infrastructure
51	High Availability Fault Tolerance	Hardware	SAN Multipathing	Current	Conditional	PBGC - IT Infrastructure
52	High Availability Fault Tolerance	OS	Microsoft Cluster Services (part of OS)	Current	Conditional	PBGC - IT Infrastructure
53	High Availability Fault Tolerance	OS	Vmware Clusters including HA and Vmotion (part of OS feature set)	Current	Conditional	PBGC - IT Infrastructure
54	Hosted Services	N/A	Citrix	At Risk	Conditional	PBGC - IT

Ref ID	Category	Sub Category	Technology / Protocol / Product	Grade	Update Sensitivity Indicator	Owner
	infrastructure services hosted by external entities		GoToMeeting 4.8			Infrastructure
55	Hosted Services infrastructure services hosted by external entities	N/A	Citrix GoToMeeting 5.0	At Risk	Conditional	PBGC - IT Infrastructure
56	Hosted Services infrastructure services hosted by external entities	N/A	Sprint Managed Network Services	Current	Conditional	PBGC - IT Infrastructure
57	Server Virtualization	N/A	Microsoft Virtual Machine	Current	Conditional	PBGC - IT Infrastructure
58	Server Virtualization	N/A	Vmware ESXi 4.1	At Risk	Conditional	PBGC - IT Infrastructure
59	Server Virtualization	N/A	Vmware ESXi 5.0	Recommended	Conditional	PBGC - IT Infrastructure
60	Server Virtualization	N/A	VMWare ESXi 5.5	Current	Conditional	PBGC - IT Infrastructure
61	Server Virtualization	N/A	VMWare Tools 5.5	Current	Part of Another Product	PBGC - IT Infrastructure
62	Server Virtualization	N/A	VMWare vCenter Converter 5.5	Current	Part of Another Product	PBGC - IT Infrastructure
63	Server Virtualization	N/A	Vmware vCenter Converter 4.2.1	At Risk	Part of Another Product	PBGC - IT Infrastructure
64	Server Virtualization	N/A	Vmware vCenter Converter 5.0	Recommended	Part of Another Product	PBGC - IT Infrastructure
65	Server Virtualization	N/A	VMWare vCenter Server 5.5	Current	Part of Another Product	PBGC - IT Infrastructure
66	Server Virtualization	N/A	Vmware vCenter Server 4.1.0	At Risk	Part of Another Product	PBGC - IT Infrastructure
67	Server	N/A	Vmware vCenter	Recommended	Part of	PBGC - IT

Ref ID	Category	Sub Category	Technology / Protocol / Product	Grade	Update Sensitivity Indicator	Owner
	Virtualization		Server 5.0		Another Product	Infrastructure
68	Server Virtualization	N/A	Vmware vCenter Update Manager 4.1.0	At Risk	Part of Another Product	PBGC - IT Infrastructure
69	Server Virtualization	N/A	Vmware vCenter Update Manager 5.0	Recommended	Part of Another Product	PBGC - IT Infrastructure
70	Server Virtualization	N/A	VMWare vCenter Update Manager 5.5	Current	Part of Another Product	PBGC - IT Infrastructure
71	Server Virtualization	N/A	Vmware vSphere 4.1.0	At Risk	Conditional	PBGC - IT Infrastructure
72	Server Virtualization	N/A	Vmware vSphere 5.0	Recommended	Conditional	PBGC - IT Infrastructure
73	Server Virtualization	N/A	VMWare vSphere 5.5	Current	Part of Another Product	PBGC - IT Infrastructure
74	Server Virtualization	N/A	Vmware vSphere client 4.1.0	At Risk	Part of Another Product	PBGC - IT Infrastructure
75	Server Virtualization	N/A	Vmware vSphere client 5.0	Recommended	Part of Another Product	PBGC - IT Infrastructure
76	Server Virtualization	N/A	VMWare vSphere Client 5.5	Current	Part of Another Product	PBGC - IT Infrastructure
77	Server Virtualization	N/A	Vmware vSphere Management Assistant (vMA) 4.1 [appliance]	Current	Part of Another Product	PBGC - IT Infrastructure
78	Server Virtualization	N/A	Vmware vSphere Management Assistant (vMA) 5.0 [appliance]	Recommended	Part of Another Product	PBGC - IT Infrastructure
79	Server Virtualization	N/A	VMWare vSphere Management Assistant (VMA) 5.5 [appliance]	Current	Part of Another Product	PBGC - IT Infrastructure
80	Software	BlackBerry	Sprint Wireless Manager	Current	Conditional	PBGC - IT Infrastructure

Ref ID	Category	Sub Category	Technology / Protocol / Product	Grade	Update Sensitivity Indicator	Owner
81	Software	Collaboration	Author-IT Software Corporation 4.5	At Risk	Non-Exempt	PBGC - Participant Services (Benefit Administration)
82	Software	Collaboration	Author-IT Software Corporation 5.1	Current	Conditional	PBGC - Participant Services (Benefit Administration)
83	Software	Collaboration	MetaLogix Content Matrix 6.x	Recommended	Conditional	
84	Software	Collaboration	MetaLogix Migration Manager	Recommended	Conditional	
85	Software	Collaboration	Microsoft SharePoint 2007	At Risk	Non-Exempt	PBGC - IT Infrastructure
86	Software	Collaboration	Microsoft SharePoint 2010	Current	Non-Exempt	PBGC - IT Infrastructure
87	Software	Collaboration	Oracle WebCenter Interaction 11g	Recommended	Non-Exempt	PBGC - Participant Services (Benefit Administration)
88	Software	Collaboration	Oracle WebCenter Interaction Collaboration Server 4.2	Current	Non-Exempt	PBGC - Participant Services (Benefit Administration)
89	Software	Collaboration	Oracle WebCenter Interaction Core 6.1	Current	Non-Exempt	PBGC - Participant Services (Benefit Administration)
90	Software	Database	Borland Dbase 5	At Risk	Non-Exempt	PBGC - IT Infrastructure
91	Software	Database	Corel Paradox 9.0	At Risk	Non-Exempt	PBGC - IT Infrastructure
92	Software	Database	Dept of Interior - National Business Center Federal Personnel Payroll System (FPPS) Datamart v11.1	Current	Conditional	Human Resources Program
93	Software	Database	Dept of Interior - National Business	Current	Conditional	Human Resources

Ref ID	Category	Sub Category	Technology / Protocol / Product	Grade	Update Sensitivity Indicator	Owner
			Center Federal Personnel Payroll System (FPPS) Datamart v11.1			Program
94	Software	Database	Microsoft SQL Server 2008 R2 SP1	At Risk	Conditional	PBGC - IT Infrastructure
95	Software	Database	Microsoft SQL Server 2008 SP1	Current	Conditional	PBGC - IT Infrastructure
96	Software	Database	Microsoft SQL Server 2008 SP2	Current	Conditional	PBGC - IT Infrastructure
97	Software	Database	Microsoft SQL Server 2012	Current	Conditional	PBGC - IT Infrastructure
98	Software	Database	Microsoft SQL Server 2005	At Risk	Conditional	PBGC - IT Infrastructure
99	Software	Database	Microsoft Visual FoxPro 9	At Risk	Conditional	PBGC - IT Infrastructure
100	Software	Database	MySQL	At Risk	Non-Exempt	PBGC - IT Infrastructure
101	Software	Database	Oracle Database 10g R2	At Risk	Conditional	PBGC - IT Infrastructure
102	Software	Database	Oracle Database 11g	Current	Conditional	PBGC - IT Infrastructure
103	Software	Database	Pervasive SQL	Restricted	Non-Exempt	PBGC - Benefit Calculation and Valuation
104	Software	Database	Sybase SQLAnywhere 9.0	At Risk	Non-Exempt	PBGC - IT Infrastructure
105	Software	Electronic Messaging	Blackberry Enterprise Server for Microsoft Exchange 5.0 Service Pack 3 Maintenance Release 4	Current	Conditional	PBGC - IT Infrastructure
106	Software	Electronic Messaging	Microsoft Exchange 2007 SP3 (Rollup 3-v2)	Current	Conditional	PBGC - IT Infrastructure
107	Software	Electronic Messaging	Microsoft Exchange 2010 SP2	Current	Conditional	PBGC - IT Infrastructure
108	Software	Electronic	Microsoft Outlook	Current	Conditional	PBGC - IT

Ref ID	Category	Sub Category	Technology / Protocol / Product	Grade	Update Sensitivity Indicator	Owner
		Messaging	Web App (OWA) 2007 SP3 (Rollup 3-v2)			Infrastructure
109	Software	Electronic Messaging	Microsoft Outlook Web App (OWA) 2010 SP2	Current	Conditional	PBGC - IT Infrastructure
110	Software	File and Print Server	Microsoft Windows Server 2008 R2 SP1	At Risk	Part of Another Product	PBGC - IT Infrastructure
111	Software	Messaging Protocol	Simple Mail Transfer Protocol (SMTP)	Current	Conditional	PBGC - IT Infrastructure
112	Software	Monitoring and Management Protocols	Microsoft Web-Based Enterprise Management (WBEM)	Current	Exempt	PBGC - IT Infrastructure
113	Software	Monitoring and Management Protocols	Microsoft Windows Management Instrumentation (WMI)	Current	Exempt	PBGC - IT Infrastructure
114	Software	Monitoring and Management Protocols	SNMP	Current	Exempt	PBGC - IT Infrastructure
115	Software	OS	Microsoft Windows 8.1	Restricted	Conditional	PBGC - IT Infrastructure
116	Software	OS	Microsoft Windows Server 2003 R2 SP2	At Risk	Conditional	PBGC - IT Infrastructure
117	Software	OS	Microsoft Windows Server 2008 R1 SP2 (64-bit only)	At Risk	Conditional	PBGC - IT Infrastructure
118	Software	OS	Microsoft Windows Server 2008 R2 SP1	At Risk	Conditional	PBGC - IT Infrastructure
119	Software	OS	Microsoft Windows Server 2012 R2	Current	Conditional	PBGC - IT Infrastructure
120	Software	OS	Novell Netware 4.22	Restricted	Non-Exempt	PBGC - IT Infrastructure

Ref ID	Category	Sub Category	Technology / Protocol / Product	Grade	Update Sensitivity Indicator	Owner
121	Software	OS	Novell Netware 5.1 SP8	Restricted	Non-Exempt	PBGC - IT Infrastructure
122	Software	OS	Oracle Solaris 10	At Risk	Conditional	PBGC - IT Infrastructure
123	Software	OS	Oracle Solaris 11	Current	Conditional	PBGC - IT Infrastructure
124	Software	OS	Oracle Solaris 9	At Risk	Non-Exempt	PBGC - IT Infrastructure
125	Software	OS	Red Hat Enterprise Linux 5.0 ES	At Risk	Conditional	PBGC - IT Infrastructure
126	Software	OS	Red Hat Enterprise Linux 6	Current	Conditional	PBGC - IT Infrastructure
127	Software	OS	Red Hat Enterprise Linux 6.0 ES	Recommended	Non-Exempt	PBGC - IT Infrastructure
128	Software	OS	Vmware ESXi 4.1	At Risk	Conditional	PBGC - IT Infrastructure
129	Software	OS	Vmware ESXi 5.0	Recommended	Conditional	PBGC - IT Infrastructure
130	Software	Print Drivers	EPSON Stylus Pro 9800 x64 6.50.0.0	Current	Conditional	
131	Software	Print Drivers	EPSON Stylus Pro 9800 x86 6.50.0.0	Current	Conditional	
132	Software	Print Drivers	Hewlett-Packard (HP) Print LaserJet	Current	Conditional	PBGC - IT Infrastructure
133	Software	Print Drivers	Hewlett-Packard (HP) Universal PCL5 x64 61.112.1.9321	Current	Conditional	PBGC - IT Infrastructure
134	Software	Print Drivers	Hewlett-Packard (HP) Universal PCL5 x86 61.112.1.9321	Current	Conditional	PBGC - IT Infrastructure
135	Software	Print Drivers	Hewlett-Packard (HP) Universal PCL6 x64 61.112.1.9321	Current	Conditional	PBGC - IT Infrastructure
136	Software	Print Drivers	Hewlett-Packard (HP) Universal PCL6 x86 61.112.1.9321	Current	Conditional	PBGC - IT Infrastructure
137	Software	Print Drivers	Hewlett-Packard	Current	Conditional	PBGC - IT

Ref ID	Category	Sub Category	Technology / Protocol / Product	Grade	Update Sensitivity Indicator	Owner
			(HP) Universal PS x64 61.112.1.9321			Infrastructure
138	Software	Print Drivers	Hewlett-Packard (HP) Universal PS x86 61.112.1.9321	Current	Conditional	PBGC - IT Infrastructure
139	Software	Print Drivers	Ricoh Aficio MP 6001 PCL6 x64 1.3.0.0	Current	Conditional	Facilities Services Program
140	Software	Print Drivers	Ricoh Aficio MP 6001 PCL6 x86 1.3.0.0	Current	Conditional	Facilities Services Program
141	Software	Print Drivers	Xerox Global Print Driver PCL6 x64 5216.1200.0.0	Current	Conditional	
142	Software	Print Drivers	Xerox Global Print Driver PCL6 x86 5216.1200.0.0	Current	Conditional	
143	Software	Remote Access	Juniper IVE Platform OS 7.0 R1	Current	Conditional	PBGC - IT Infrastructure
144	Software	Remote Access	Microsoft Remote Desktop Services Windows 2008 R2	At Risk	Conditional	PBGC - IT Infrastructure
145	Software	Remote Access	Microsoft Remote Desktop Services (Windows 2012 R2)	Current	Conditional	PBGC - IT Infrastructure
146	Software	Remote Access	Microsoft Terminal Services Windows 2003 R2	Current	Conditional	PBGC - IT Infrastructure
147	Software	Reverse Proxy	Microsoft Forefront TMG (Threat Management Gateway) 2010	Recommended	Conditional	PBGC - IT Infrastructure
148	Software	Server Administration Tools and Technologies	BASH Shell Script	Current	Exempt	PBGC - IT Infrastructure
149	Software	Server Administration Tools and	Bourne Shell Script (SH)	Current	Exempt	PBGC - IT Infrastructure

Ref ID	Category	Sub Category	Technology / Protocol / Product	Grade	Update Sensitivity Indicator	Owner
		Technologies				
150	Software	Server Administration Tools and Technologies	C Shell Script (CSH)	Current	Exempt	PBGC - IT Infrastructure
151	Software	Server Administration Tools and Technologies	Hewlett-Packard (HP) Array Configuration Utility 8.7	Current	Exempt	PBGC - IT Infrastructure
152	Software	Server Administration Tools and Technologies	Hewlett-Packard (HP) Insight Control for BladeSystem enclosures 6.3	Current	Exempt	PBGC - IT Infrastructure
153	Software	Server Administration Tools and Technologies	Hewlett-Packard (HP) Insight Diagnostics Online Edition 8.7	Current	Exempt	PBGC - IT Infrastructure
154	Software	Server Administration Tools and Technologies	Hewlett-Packard (HP) Insight Manager Agents 8.7	Current	Exempt	PBGC - IT Infrastructure
155	Software	Server Administration Tools and Technologies	Hewlett-Packard (HP) Lights-Out On-line Configuration Utility 3.1.1.0	Current	Exempt	PBGC - IT Infrastructure
156	Software	Server Administration Tools and Technologies	Hewlett-Packard (HP) ProLiant Support Pack (PSP) 8.70	Current	Exempt	PBGC - IT Infrastructure
157	Software	Server Administration Tools and Technologies	Hewlett-Packard (HP) System Management HomePage 6.3.0	Current	Exempt	PBGC - IT Infrastructure
158	Software	Server Administration Tools and Technologies	Hewlett-Packard (HP) Systems Insight Manager (SIM) 6.3	Current	Exempt	PBGC - IT Infrastructure
159	Software	Server Administration	Hewlett-Packard (HP) Version	Current	Exempt	PBGC - IT Infrastructure

Ref ID	Category	Sub Category	Technology / Protocol / Product	Grade	Update Sensitivity Indicator	Owner
		Tools and Technologies	Control Agent 6.3.0.870			
160	Software	Server Administration Tools and Technologies	Korn Shell Script (KSH)	Current	Exempt	PBGC - IT Infrastructure
161	Software	Server Administration Tools and Technologies	Microsoft Active Directory 2008 R2	At Risk	Non-Exempt	PBGC - IT Infrastructure
162	Software	Server Administration Tools and Technologies	Microsoft Active Directory 2012 R2	Current	Part of Another Product	PBGC - IT Infrastructure
163	Software	Server Administration Tools and Technologies	Microsoft Deployment Toolkit 2012 Update 1	At Risk	Exempt	PBGC - IT Infrastructure
164	Software	Server Administration Tools and Technologies	Microsoft Deployment Toolkit 2013	Current	Exempt	PBGC - IT Infrastructure
165	Software	Server Administration Tools and Technologies	Microsoft Group Policy	Current	Part of Another Product	PBGC - IT Infrastructure
166	Software	Server Administration Tools and Technologies	Microsoft Management Console (MMC) 3.0	Current	Part of Another Product	PBGC - IT Infrastructure
167	Software	Server Administration Tools and Technologies	Microsoft PsExec v1.98	Current	Exempt	PBGC - IT Infrastructure
168	Software	Server Administration Tools and Technologies	Microsoft Remote Desktop Connection Manager 2.2	Current	Exempt	PBGC - IT Infrastructure
169	Software	Server Administration Tools and	Microsoft Remote Server Administration	Current	Part of Another Product	PBGC - IT Infrastructure

Ref ID	Category	Sub Category	Technology / Protocol / Product	Grade	Update Sensitivity Indicator	Owner
		Technologies	Tools (RSAT)			
170	Software	Server Administration Tools and Technologies	Microsoft SQL Server Management Studio 2008 R2	Current	Part of Another Product	PBGC - IT Infrastructure
171	Software	Server Administration Tools and Technologies	Microsoft System Center Operations Manager 2007 (R2)	Restricted	Exempt	PBGC - IT Infrastructure
172	Software	Server Administration Tools and Technologies	Microsoft Windows Powershell 2.0	At Risk	Exempt	PBGC - IT Infrastructure
173	Software	Server Administration Tools and Technologies	Microsoft Windows PowerShell 3	Current	Exempt	PBGC - IT Infrastructure
174	Software	Server Administration Tools and Technologies	Microsoft Windows Resource kits	Current	Exempt	PBGC - IT Infrastructure
175	Software	Server Administration Tools and Technologies	Microsoft Windows Support Tools	Current	Exempt	PBGC - IT Infrastructure
176	Software	Server Administration Tools and Technologies	Microsoft Wulninstall 1.1	Current	Conditional	
177	Software	Server Administration Tools and Technologies	Nucleus Kernel 7.0	Current	Conditional	PBGC - IT Infrastructure
178	Software	Server Administration Tools and Technologies	Oracle Enterprise Manager Grid Control 10g	At Risk	Conditional	PBGC - IT Infrastructure
179	Software	Server Administration Tools and Technologies	Oracle Enterprise Manager Grid Control 11g	Current	Conditional	PBGC - IT Infrastructure

Ref ID	Category	Sub Category	Technology / Protocol / Product	Grade	Update Sensitivity Indicator	Owner
180	Software	Server Administration Tools and Technologies	Orca UNIX monitoring tool	At Risk	Exempt	PBGC - IT Infrastructure
181	Software	Server Administration Tools and Technologies	Quest PowerGUI 3.0	Current	Exempt	PBGC - IT Infrastructure
182	Software	Server Administration Tools and Technologies	Sapient Technologies PrimalScript 3.1	Current	Exempt	PBGC - IT Infrastructure
183	Software	Server Administration Tools and Technologies	vbscript	Current	Exempt	PBGC - IT Infrastructure
184	Software	Server Administration Tools and Technologies	Vmware Tools 4.1	At Risk	Part of Another Product	PBGC - IT Infrastructure
185	Software	Server Administration Tools and Technologies	Vmware vCenter Converter 4.2.1	At Risk	Exempt	PBGC - IT Infrastructure
186	Software	Server Administration Tools and Technologies	Vmware vCenter Converter 5.0	Recommended	Exempt	PBGC - IT Infrastructure
187	Software	Server Administration Tools and Technologies	Vmware vCenter Server 4.1.0	At Risk	Part of Another Product	PBGC - IT Infrastructure
188	Software	Server Administration Tools and Technologies	Vmware vCenter Server 5.0	Recommended	Part of Another Product	PBGC - IT Infrastructure
189	Software	Server Administration Tools and Technologies	Vmware vCenter Update Manager 4.1.0	At Risk	Part of Another Product	PBGC - IT Infrastructure
190	Software	Server	Vmware vCenter	Recommended	Part of	PBGC - IT

Ref ID	Category	Sub Category	Technology / Protocol / Product	Grade	Update Sensitivity Indicator	Owner
		Administration Tools and Technologies	Update Manager 5.0		Another Product	Infrastructure
191	Software	Server Administration Tools and Technologies	Vmware vSphere 4.1.0	At Risk	Conditional	PBGC - IT Infrastructure
192	Software	Server Administration Tools and Technologies	Vmware vSphere 5.0	Recommended	Conditional	PBGC - IT Infrastructure
193	Software	Server Administration Tools and Technologies	Vmware vSphere client 4.1.0	At Risk	Part of Another Product	PBGC - IT Infrastructure
194	Software	Server Administration Tools and Technologies	Vmware vSphere client 5.0	Recommended	Part of Another Product	PBGC - IT Infrastructure
195	Software	Server Administration Tools and Technologies	Vmware vSphere Management Assistant (vMA) 4.1 [appliance]	Current	Part of Another Product	PBGC - IT Infrastructure
196	Software	Server Administration Tools and Technologies	Vmware vSphere Management Assistant (vMA) 5.0 [appliance]	Recommended	Part of Another Product	PBGC - IT Infrastructure
197	Software	Server Administration Tools and Technologies	Z Shell Script (ZSH)	Current	Exempt	PBGC - IT Infrastructure
198	Software	Web server	Apache HTTP Server 2.2	Current	Conditional	
199	Software	Web server	Apache HTTP Server 2.4	Recommended	Conditional	
200	Software	Web server	Apache Tomcat 6.0.33	Restricted	Part of Another Product	
201	Software	Web server	Apache Tomcat 6.0.37	Restricted	Part of Another Product	

Ref ID	Category	Sub Category	Technology / Protocol / Product	Grade	Update Sensitivity Indicator	Owner
202	Software	Web server	Microsoft Internet Information Services (IIS) 7.0	At Risk	Conditional	PBGC - IT Infrastructure
203	Software	Web server	Microsoft Internet Information Services (IIS) 7.5	At Risk	Conditional	PBGC - IT Infrastructure
204	Software	Web server	Microsoft Internet Information Services (IIS) 8.5	Current	Conditional	PBGC - IT Infrastructure
205	Software	Web server	Oracle Application Server 10.1.2 HTTP Server	At Risk	Conditional	
206	Software	Web server	Oracle Application Server 10.1.3 HTTP Server	At Risk	Conditional	
207	Software	Web server	Oracle HTTP Server 11g	Recommended	Conditional	
208	Workstation Software	Collaboration Tools	Mitratech TeamConnect 3.0	At Risk	Conditional	PBGC - Risk Management Early Warning / Legal Matter Management

5.4 Security

Security in the TRM contains standards, software, and specialized appliances for detection, identification, assessment, tracking and prevention, neutralization or elimination of threats, and weaknesses that may lead to compromise of at least one of the three components of IT security: confidentiality, integrity or availability. Products in the Security category protect information and information systems from unauthorized access, disclosure, disruption, destruction or denial of service.

In addition to the protection from external threats, products in this category identify security needs, account for authorized users and their access rights to the information systems, information or facilities, protect users' identity, identify and establish adequate security controls to meet the security needs.

Due to the potentially sensitive information included regarding the IT security tools, products and protocols in use or planned at PBGC, this information is not included as part of the published TRM. If there is a need to review this information, please contact the Enterprise Information Security Office (EISO) where the request can be reviewed and approved.

5.5 Connectivity

This category describes the standards, protocols, cabling, hardware and software products making communication among information systems and/or users possible through necessary standardization, network monitoring, planning, and continuous maintenance.

Products in this category connect information systems and users located in PBGC headquarters campus, FBA sites, Internet, and PBGC partner sites. This category covers general-use computer networks and does not include communication mechanisms used and managed internally in highly specialized systems like the Storage Area Network (SAN).

Ref ID	Category	Sub Category	Technology / Protocol / Product	Grade	Update Sensitivity Indicator	Owner
1	Data Transmission	N/A	Axway Secure Client 5.7.1	Restricted	Exempt	PBGC - IT Infrastructure
2	Data Transmission	N/A	File Transfer Protocol (FTP)	At Risk	Non-Exempt	PBGC - IT Infrastructure
3	Data Transmission	N/A	HTTP, HTTPS, SFTP	Current	Non-Exempt	PBGC - IT Infrastructure
4	Data Transmission	N/A	International Business Machines (IBM) Sterling Connect:Direct v4.1	Current	Conditional	
5	Data Transmission	N/A	IPSwitch MoveIt DMZ XFER 6	Restricted	Exempt	PBGC - Participant Services (Benefit Administration)
6	Data Transmission	N/A	IPSwitch MOVEit Wizard Web ActiveX	Restricted	Exempt	PBGC - Participant Services (Benefit Administration)
7	Data Transmission	N/A	IPSwitch WSFTP 12.4	Current	Conditional	PBGC - IT Infrastructure
8	Data Transmission	N/A	IPSwitch WSFTP Pro 9.01	At Risk	Conditional	PBGC - Benefit Calculation and Valuation
9	Data Transmission	N/A	JCIFS 1.3.11	Current	Conditional	
10	Data Transmission	N/A	LeapFile - Cloud based File Transfer Service	Current	Conditional	PBGC - IT Infrastructure

Ref ID	Category	Sub Category	Technology / Protocol / Product	Grade	Update Sensitivity Indicator	Owner
11	Data Transmission	N/A	Office of Personnel Management (OPM) eDelivery Direct FTP 1.1.15	Restricted	Exempt	Facilities Services Program
12	Data Transmission	N/A	Samba 3.0.9-1.3E.17	Current	Conditional	PBGC - IT Infrastructure
13	Data Transmission	N/A	Tectia Client 6.2.3	Current	Conditional	PBGC - IT Infrastructure
14	Data Transmission	N/A	Tectia Server 6.2.3	Current	Conditional	PBGC - IT Infrastructure
15	Data Transmission	N/A	TIBCO Managed File Transfer Platform server 7.1	Restricted	Conditional	PBGC - Participant Services (Benefit Administration)
16	Internet DMZ	HW	Cisco Adaptive Security Appliance (ASA) 5500	Current	Exempt	PBGC - IT Infrastructure
17	Internet DMZ	HW	Cisco Adaptive Security Appliance (ASA) 5585	Current	Exempt	PBGC - IT Infrastructure
18	Internet DMZ	OS	Cisco Adaptive Security Appliance (ASA) OS 8.4	Current	Exempt	PBGC - IT Infrastructure
19	Internet DMZ	SW Protocols	Cisco Adaptive Security Device Manager (ASDM) 6.4	Current	Exempt	PBGC - IT Infrastructure
20	LAN MAN WAN	Admin Tools	Cisco Works 3.x	At Risk	Exempt	PBGC - IT Infrastructure
21	LAN MAN WAN	Admin Tools	Cisco Works 4.x	Recommended	Exempt	PBGC - IT Infrastructure
22	LAN MAN WAN	Admin Tools	Secure Shell (SSH) v3.2	Current	Conditional	PBGC - IT Infrastructure
23	LAN MAN WAN	Admin Tools	WireShark 1.6.2	Current	Exempt	PBGC - IT Infrastructure
24	LAN MAN WAN	Cabling	Unshielded Twisted Pair (UTP) CAT5	At Risk	N/A	PBGC - IT Infrastructure
25	LAN MAN WAN	Cabling	Unshielded Twisted Pair (UTP) CAT5e	Current	N/A	PBGC - IT Infrastructure

Ref ID	Category	Sub Category	Technology / Protocol / Product	Grade	Update Sensitivity Indicator	Owner
26	LAN MAN WAN	Cabling	Unshielded Twisted Pair (UTP) CAT6	Recommended	Exempt	PBGC - IT Infrastructure
27	LAN MAN WAN	Cabling	Unshielded Twisted Pair (UTP) CAT6e	Recommended	Exempt	PBGC - IT Infrastructure
28	LAN MAN WAN	HW	Hewlett-Packard (HP) BladeSystem c-Class Small Form-Factor Pluggable 10GbE Copper Cable (487655-B21)	Current	Exempt	PBGC - IT Infrastructure
29	LAN MAN WAN	HW	Hewlett-Packard (HP) SFP+ transceiver module (10 GB Fiber GBIC) (455883-B21)	Current	Exempt	PBGC - IT Infrastructure
30	LAN MAN WAN	HW	LAN MAN WAN 10/100/1000 T-Base NICs	Current	Exempt	PBGC - IT Infrastructure
31	LAN MAN WAN	HW	LAN MAN WAN 10GB SFP+	Current	Exempt	PBGC - IT Infrastructure
32	LAN MAN WAN	OS	Cisco Internetwork Operating System (IOS) v12.x	Current	Exempt	PBGC - IT Infrastructure
33	LAN MAN WAN	Routers	Cisco routers 18xx	Current	Exempt	PBGC - IT Infrastructure
34	LAN MAN WAN	Routers	Cisco routers 38xx	Current	Exempt	PBGC - IT Infrastructure
35	LAN MAN WAN	Routers	Cisco routers 65xx	Current	Exempt	PBGC - IT Infrastructure
36	LAN MAN WAN	Routers	Cisco routers 72xx	Current	Exempt	PBGC - IT Infrastructure
37	LAN MAN WAN	SW Protocols	Advanced Encryption Standard (AES) 256-bit	Current	Exempt	PBGC - IT Infrastructure
38	LAN MAN WAN	SW Protocols	Internet Protocol Security (IPsec)	Current	Exempt	PBGC - IT Infrastructure

Ref ID	Category	Sub Category	Technology / Protocol / Product	Grade	Update Sensitivity Indicator	Owner
39	LAN MAN WAN	SW Protocols	MPLS	Current	Exempt	PBGC - IT Infrastructure
40	LAN MAN WAN	SW Protocols	Open Shortest Path First (OSPF)	Current	Conditional	PBGC - IT Infrastructure
41	LAN MAN WAN	SW Protocols	Plixer Scrutinizer WAN Flow (Net Flow)	Current	Exempt	PBGC - IT Infrastructure
42	LAN MAN WAN	SW Protocols	Riverbed RiOS 5.x	Current	Exempt	PBGC - IT Infrastructure
43	LAN MAN WAN	SW Protocols	Riverbed RiOS 6.x	Current	Exempt	PBGC - IT Infrastructure
44	LAN MAN WAN	SW Protocols	Riverbed RiOS 7.x	Current	Exempt	PBGC - IT Infrastructure
45	LAN MAN WAN	SW Protocols	TCP/IPv4	Current	Non-Exempt	PBGC - IT Infrastructure
46	LAN MAN WAN	SW Protocols	TCP/IPv6	Current	Non-Exempt	PBGC - IT Infrastructure
47	LAN MAN WAN	Switches	Cisco Catalyst switches 45xx (4506-E)	At Risk	Exempt	PBGC - IT Infrastructure
48	LAN MAN WAN	Switches	Cisco Core Switches 65xxE (6504, 6509, 6513)	Current	Exempt	PBGC - IT Infrastructure
49	LAN MAN WAN	Switches	Cisco Nexus Core Switches (2000, 5000, and 7000)	Current	Exempt	PBGC - IT Infrastructure
50	LAN MAN WAN	Switches	Cisco workgroup switches 29xx (2924, 2960)	At Risk	Exempt	PBGC - IT Infrastructure
51	LAN MAN WAN	Switches	Cisco workgroup switches 35xx (3524, 3550)	At Risk	Exempt	PBGC - IT Infrastructure
52	LAN MAN WAN	Switches	Cisco workgroup switches 37xx (3750)	Current	Exempt	PBGC - IT Infrastructure
53	LAN MAN WAN	Wiring	LAN MAN WAN 10G fiber 50 microns	Current	N/A	PBGC - IT Infrastructure
54	LAN MAN WAN	Wiring	LAN MAN WAN 10G fiber 62.5 microns	At Risk	N/A	PBGC - IT Infrastructure

Ref ID	Category	Sub Category	Technology / Protocol / Product	Grade	Update Sensitivity Indicator	Owner
55	Load Balancing	N/A	Brocade ADX 1000 Load Balancer Appliance (OS v12.1) (OS v12.1)	Current	Exempt	PBGC - IT Infrastructure
56	Load Balancing	N/A	Cisco Content Services Switch 115xx	At Risk	Exempt	PBGC - IT Infrastructure
57	VPN	N/A	CheckPoint UTM-1 570 Appliance	Current	Exempt	PBGC - IT Infrastructure
58	VPN	N/A	Juniper SSL VPN Appliance SA6500	Current	Exempt	PBGC - IT Infrastructure
59	WAN Optimization	N/A	Riverbed Central Management Console 5.x	Current	Exempt	PBGC - IT Infrastructure
60	WAN Optimization	N/A	Riverbed Central Management Console 6.x	Current	Exempt	PBGC - IT Infrastructure
61	WAN Optimization	N/A	Riverbed Central Management Console 7.x	Current	Exempt	PBGC - IT Infrastructure
62	WAN Optimization	N/A	Riverbed Riverbed Steelhead Mobile Controller 3.x	Current	Exempt	PBGC - IT Infrastructure
63	WAN Optimization	N/A	Riverbed Riverbed Steelhead Mobile Controller 4.x	Current	Exempt	PBGC - IT Infrastructure
64	WAN Optimization	N/A	Riverbed Steelhead 2000 series	Current	Exempt	PBGC - IT Infrastructure
65	WAN Optimization	N/A	Riverbed Steelhead 6000 series	Current	Exempt	PBGC - IT Infrastructure
66	WAN Optimization	N/A	Riverbed Steelhead 7000 series	Current	Exempt	PBGC - IT Infrastructure
67	WAN Optimization	N/A	Riverbed Steelhead 8000 series	Current	Exempt	PBGC - IT Infrastructure

5.6 Technology Service Management

This category covers products supporting most of the ITIL processes. Support for the ITIL processes which directly interacts with or benefits the end user is combined with other services affecting end users and included into the User Service Management Category.

Ref ID	Category	Sub Category	Technology / Protocol / Product	Grade	Update Sensitivity Indicator	Owner (IT Investment)
1	Availability Management	N/A	Hewlett-Packard (HP) Network Node Manager I series (NNMi) 8.13	Current	Conditional	PBGC - IT Infrastructure
2	Availability Management	N/A	Hewlett-Packard (HP) Network Node Manager I series (NNMi) 9.10	Recommended	Conditional	PBGC - IT Infrastructure
3	Availability Management	N/A	Hewlett-Packard (HP) Real-time User Monitor (RUM) 8.0	Current	Conditional	PBGC - IT Infrastructure
4	Availability Management	N/A	Hewlett-Packard (HP) Real-time User Monitor (RUM) 9.10	Recommended	Conditional	PBGC - IT Infrastructure
5	Availability Management	N/A	Hewlett-Packard (HP) SiteScope 11.01	Current	Conditional	PBGC - IT Infrastructure
6	Availability Management	N/A	Hewlett-Packard (HP) SiteScope 11.10	Recommended	Conditional	PBGC - IT Infrastructure
7	Capacity Management	N/A	Hewlett-Packard (HP) SiteScope 11.01	Current	Conditional	PBGC - IT Infrastructure
8	Capacity Management	N/A	Hewlett-Packard (HP) SiteScope 11.10	Recommended	Conditional	PBGC - IT Infrastructure
9	Change Management	N/A	Hewlett-Packard (HP) Service Manager 7.11	Current	Conditional	PBGC - IT Infrastructure
10	Change Management	N/A	Hewlett-Packard (HP) Service Manager 9.30	Recommended	Conditional	PBGC - IT Infrastructure
11	Configuration	N/A	Hewlett-Packard	Current	Conditional	PBGC - IT

Ref ID	Category	Sub Category	Technology / Protocol / Product	Grade	Update Sensitivity Indicator	Owner (IT Investment)
	Management		(HP) Discovery and Dependency Mapping Advanced Edition (DDMi AE) 8.05			Infrastructure
12	Configuration Management	N/A	Hewlett-Packard (HP) Discovery and Dependency Mapping Advanced Edition (DDMi AE) 9.04	Recommended	Conditional	PBGC - IT Infrastructure
13	Configuration Management	N/A	Hewlett-Packard (HP) Universal Configuration Management Database (uCMDB) 8.05	Current	Conditional	PBGC - IT Infrastructure
14	Configuration Management	N/A	Hewlett-Packard (HP) Universal Configuration Management Database (uCMDB) 9.04	Recommended	Conditional	PBGC - IT Infrastructure
15	Configuration Management	N/A	Oracle Configuration Manager (OCM) 11g	Current	Exempt	PBGC - IT Infrastructure
16	IT Asset Inventory and License Management	N/A	Altiris Asset Management Suite	Recommended	Conditional	PBGC - IT Infrastructure
17	IT Asset Inventory and License Management	N/A	CACI Comprizon Suite 8.11	Current	Conditional	Procurement Management Program
18	IT Asset Inventory and License Management	N/A	CACI Comprizon Suite 8.10	At Risk	Conditional	Procurement Management Program
19	IT Asset Inventory and License Management	N/A	CG4 Solution Asset Tracking System 4.5.6	Current	Conditional	PBGC - IT Infrastructure
20	IT Asset Inventory and License	N/A	Hewlett-Packard (HP) Asset	Current	Conditional	PBGC - IT Infrastructure

Ref ID	Category	Sub Category	Technology / Protocol / Product	Grade	Update Sensitivity Indicator	Owner (IT Investment)
	Management		Manager 9.3			
21	IT Asset Inventory and License Management	N/A	Hewlett-Packard (HP) Discovery and Dependency Mapping (DDMi) 9.04	Recommended	Conditional	PBGC - IT Infrastructure
22	IT Asset Inventory and License Management	N/A	InMagic DB/Text Works 11	At Risk	Conditional	PBGC - IT Infrastructure
23	IT Asset Inventory and License Management	N/A	International Business Machines (IBM) Endpoint Manager (EM) 9.0.x	Current	Conditional	PBGC - IT Infrastructure
24	IT Portfolio Project Management	N/A	Oracle Primavera Portfolio Management 9.0	Current	Conditional	IT Planning and Management Solutions
25	IT Portfolio Project Management	N/A	Oracle Primavera Portfolio Management P6v7 SP4	Current	Non-Exempt	IT Planning and Management Solutions
26	Release and Deployment Management	N/A	Hewlett-Packard (HP) Release Control 9.13	Current	Conditional	PBGC - IT Infrastructure
27	Release and Deployment Management	N/A	Hewlett-Packard (HP) Service Manager 7.11	Current	Conditional	PBGC - IT Infrastructure
28	Release and Deployment Management	N/A	Hewlett-Packard (HP) Service Manager 9.30	Recommended	Conditional	PBGC - IT Infrastructure
29	Service Catalog	N/A	Hewlett-Packard (HP) Service Manager 7.11	Current	Conditional	PBGC - IT Infrastructure
30	Service Catalog	N/A	Hewlett-Packard (HP) Service Manager 9.30	Recommended	Conditional	PBGC - IT Infrastructure
31	Service Level Management	N/A	Hewlett-Packard (HP) Business Process Monitor (BPM) 8.05	Current	Conditional	PBGC - IT Infrastructure
32	Service Level	N/A	Hewlett-Packard	Recommended	Conditional	PBGC - IT

Ref ID	Category	Sub Category	Technology / Protocol / Product	Grade	Update Sensitivity Indicator	Owner (IT Investment)
	Management		(HP) Business Process Monitor (BPM) 9.10			Infrastructure
33	Service Level Management	N/A	Hewlett-Packard (HP) Business Service Management (BSM) 8.05	Current	Conditional	PBGC - IT Infrastructure
34	Service Level Management	N/A	Hewlett-Packard (HP) Business Service Management (BSM) 9.10	Recommended	Conditional	PBGC - IT Infrastructure
35	Service Level Management	N/A	Hewlett-Packard (HP) Service Manager 7.11	Current	Conditional	PBGC - IT Infrastructure
36	Service Level Management	N/A	Hewlett-Packard (HP) Service Manager 9.30	Recommended	Conditional	PBGC - IT Infrastructure

5.7 User Service Management

This category describes ITIL processes and services which directly interact with, support, or benefit the end users, their workstations, or work places.

Ref ID	Category	Sub Category	Technology / Protocol / Product	Grade	Update Sensitivity Indicator	Owner
1	Service Desk	Incident management	Hewlett-Packard (HP) Service Manager 7.11	Current	Conditional	PBGC - IT Infrastructure
2	Service Desk	Problem Management	Hewlett-Packard (HP) Service Manager 7.11	Current	Non-Exempt	PBGC - IT Infrastructure
3	Service Desk	Request Call Management	Hewlett-Packard (HP) Service Manager 7.11	Current	Conditional	PBGC - IT Infrastructure
4	Software delivery and	N/A	Altiris Agent 6.0	Current	Conditional	PBGC - IT Infrastructure

Ref ID	Category	Sub Category	Technology / Protocol / Product	Grade	Update Sensitivity Indicator	Owner
	configuration					
5	Software delivery and configuration	N/A	Altiris Software Portal	Current	Conditional	PBGC - IT Infrastructure
6	User Account Management	N/A	Microsoft Active Directory 2003	At Risk	Non-Exempt	PBGC - IT Infrastructure
7	User Account Management	N/A	Oracle Identity Manager 11g	Recommended	Non-Exempt	PBGC - IT Infrastructure

5.8 Technology Delivery Support

This category includes standards, products, tools and software solutions to be used by the development and implementation teams during the design, development, and deployment phases of the solution lifecycle. These tools and solutions provide direct support to the processes that the development teams face during development and cover areas of requirements management, solution construction, testing, validation, and monitoring. The standards and protocols included in this category provide a baseline of technologies that PBGC solutions have to use to construct the solution or apply for a waiver.

Ref ID	Category	Sub Category	Technology / Protocol / Product	Grade	Update Sensitivity Indicator	Owner
1	Component Management and Instrumentation	N/A	Microsoft COM+	At Risk	Non-Exempt	PBGC - IT Infrastructure
2	Component Management and Instrumentation	N/A	Oracle Java Management Extensions (JMX) 1.2	Current	Conditional	PBGC - IT Infrastructure
3	Development Environment	N/A	Adobe After Effects 10	At Risk	Non-Exempt	PBGC - IT Infrastructure
4	Development Environment	N/A	Adobe After Effects 9	At Risk	Non-Exempt	PBGC - IT Infrastructure
5	Development Environment	N/A	Adobe Creative Suite Design & Web Premium	At Risk	Non-Exempt	PBGC - IT Infrastructure
6	Development Environment	N/A	Adobe Creative Suite Master Collection	At Risk	Non-Exempt	PBGC - IT Infrastructure
7	Development	N/A	Adobe Creative	At Risk	Non-Exempt	PBGC - IT

Ref ID	Category	Sub Category	Technology / Protocol / Product	Grade	Update Sensitivity Indicator	Owner
	Environment		Suite Production Premium			Infrastructure
8	Development Environment	N/A	Adobe Dreamweaver 6	At Risk	Non-Exempt	PBGC - IT Infrastructure
9	Development Environment	N/A	Adobe Dreamweaver CS5	Current	Exempt	PBGC - IT Infrastructure
10	Development Environment	N/A	Adobe LiveCycle Designer 9	At Risk	Non-Exempt	PBGC - IT Infrastructure
11	Development Environment	N/A	Adobe ReportBuilder Excel Add-on	Current	Conditional	PBGC - IT Infrastructure
12	Development Environment	N/A	Altova MapForce 2008	At Risk	Non-Exempt	PBGC - IT Infrastructure
13	Development Environment	N/A	Altova MissionKit 2011	At Risk	Non-Exempt	PBGC - IT Infrastructure
14	Development Environment	N/A	Altova StyleVision 2008	At Risk	Non-Exempt	PBGC - IT Infrastructure
15	Development Environment	N/A	Altova Umodel 2012	At Risk	Non-Exempt	PBGC - IT Infrastructure
16	Development Environment	N/A	Altova XMLSpy 2008	At Risk	Non-Exempt	PBGC - IT Infrastructure
17	Development Environment	N/A	Altova XMLSpy 2012	Current	Non-Exempt	PBGC - IT Infrastructure
18	Development Environment	N/A	Altova XMLSpy 2013	Current	Non-Exempt	PBGC - IT Infrastructure
19	Development Environment	N/A	Altova XMLSpy 2014	Current	Exempt	PBGC - IT Infrastructure
20	Development Environment	N/A	Eclipse Foundation Eclipse Classic 1.2	At Risk	Non-Exempt	PBGC - IT Infrastructure
21	Development Environment	N/A	Eclipse Foundation Eclipse Classic 3.2	At Risk	Non-Exempt	PBGC - IT Infrastructure
22	Development Environment	N/A	Eclipse Foundation Eclipse Classic 3.4	At Risk	Non-Exempt	PBGC - IT Infrastructure
23	Development Environment	N/A	Eclipse Foundation Eclipse Classic 3.5	At Risk	Non-Exempt	PBGC - IT Infrastructure
24	Development Environment	N/A	Eclipse Foundation Eclipse Classic 3.7	Current	Non-Exempt	PBGC - IT Infrastructure
25	Development Environment	N/A	Eclipse Foundation Eclipse Classic 4.1	Recommended	Non-Exempt	PBGC - IT Infrastructure
26	Development Environment	N/A	GNUWin32 (Tar for Win32) 1.13	At Risk	Non-Exempt	PBGC - IT Infrastructure

Ref ID	Category	Sub Category	Technology / Protocol / Product	Grade	Update Sensitivity Indicator	Owner
27	Development Environment	N/A	International Business Machines (IBM) Rational Requisite Pro 7.1	At Risk	Non-Exempt	PBGC - IT Infrastructure
28	Development Environment	N/A	Mansfield Software Group KEDIT 1.5	At Risk	Non-Exempt	PBGC - IT Infrastructure
29	Development Environment	N/A	Microsoft InfoPath Designer 2010	At Risk	Non-Exempt	PBGC - IT Infrastructure
30	Development Environment	N/A	Microsoft SharePoint Designer 2010	At Risk	Non-Exempt	PBGC - IT Infrastructure
31	Development Environment	N/A	Microsoft Visual Basic 6	At Risk	Non-Exempt	PBGC - IT Infrastructure
32	Development Environment	N/A	Microsoft Visual Basic Enterprise	At Risk	Non-Exempt	PBGC - IT Infrastructure
33	Development Environment	N/A	Microsoft Visual FoxPro 9.0	At Risk	Non-Exempt	PBGC - IT Infrastructure
34	Development Environment	N/A	Microsoft Visual Studio 2003	At Risk	Non-Exempt	PBGC - IT Infrastructure
35	Development Environment	N/A	Microsoft Visual Studio 2005	At Risk	Non-Exempt	PBGC - IT Infrastructure
36	Development Environment	N/A	Microsoft Visual Studio 2008	At Risk	Non-Exempt	PBGC - IT Infrastructure
37	Development Environment	N/A	Microsoft Visual Studio 2010	Current	Conditional	PBGC - IT Infrastructure
38	Development Environment	N/A	Microsoft Visual Studio 6	At Risk	Non-Exempt	PBGC - IT Infrastructure
39	Development Environment	N/A	Microsoft Visual Studio Professional	Current	Conditional	PBGC - IT Infrastructure
40	Development Environment	N/A	Microsoft Windows SDK 6	At Risk	Non-Exempt	PBGC - IT Infrastructure
41	Development Environment	N/A	Oracle Business Intelligence Publisher Enterprise 11.1.1.x	Recommended	Conditional	PBGC - IT Infrastructure
42	Development Environment	N/A	Oracle Java Decompiler (JD)-GUI 0.2	At Risk	Non-Exempt	PBGC - IT Infrastructure
43	Development Environment	N/A	Oracle Application Development	At Risk	Conditional	PBGC - IT Infrastructure

Ref ID	Category	Sub Category	Technology / Protocol / Product	Grade	Update Sensitivity Indicator	Owner
			Framework 10.1			
44	Development Environment	N/A	Oracle Application Express (APEX) 4.1	At Risk	Non-Exempt	PBGC - IT Infrastructure
45	Development Environment	N/A	Oracle Designer 10g	At Risk	Non-Exempt	PBGC - IT Infrastructure
46	Development Environment	N/A	Oracle Developer Suite Software Configuration Manager (SCM) 10.1	At Risk	Non-Exempt	PBGC - IT Infrastructure
47	Development Environment	N/A	Oracle Forms & Reports 10g	At Risk	Conditional	PBGC - IT Infrastructure
48	Development Environment	N/A	Oracle Forms & Reports 11g	Recommended	Conditional	PBGC - IT Infrastructure
49	Development Environment	N/A	Oracle Forms 6i	At Risk	Non-Exempt	PBGC - IT Infrastructure
50	Development Environment	N/A	Oracle Java 2 Enterprise Edition (J2EE) 1.4	At Risk	Non-Exempt	PBGC - IT Infrastructure
51	Development Environment	N/A	Oracle Java Development Kit 1.4	At Risk	Non-Exempt	PBGC - IT Infrastructure
52	Development Environment	N/A	Oracle Java Development Kit 1.5	At Risk	Non-Exempt	PBGC - IT Infrastructure
53	Development Environment	N/A	Oracle Java Development Kit 1.6	Current	Conditional	PBGC - IT Infrastructure
54	Development Environment	N/A	Oracle Java Runtime Environment (JRE) 1.6	At Risk	Non-Exempt	PBGC - IT Infrastructure
55	Development Environment	N/A	Oracle Jdeveloper 10g	At Risk	Non-Exempt	PBGC - IT Infrastructure
56	Development Environment	N/A	Oracle Jdeveloper 11g	Current	Exempt	PBGC - IT Infrastructure
57	Development Environment	N/A	Oracle Jdeveloper 11g	Current	Exempt	PBGC - IT Infrastructure
58	Development Environment	N/A	Oracle SQL Developer 3	Current	Conditional	PBGC - IT Infrastructure
59	Development	N/A	Oracle SQL	Current	Conditional	PBGC - IT

Ref ID	Category	Sub Category	Technology / Protocol / Product	Grade	Update Sensitivity Indicator	Owner
	Environment		Developer Data Modeler 3			Infrastructure
60	Development Environment	N/A	Oracle Warehouse Builder 10g	At Risk	Conditional	PBGC - IT Infrastructure
61	Development Environment	N/A	Oracle WebCenter Interaction 2.2	Current	Conditional	PBGC - IT Infrastructure
62	Development Environment	N/A	Python 2	At Risk	Non-Exempt	PBGC - IT Infrastructure
63	Development Environment	N/A	Python 3	At Risk	Non-Exempt	PBGC - IT Infrastructure
64	Development Environment	N/A	Redman Solutions RapidRedact 2.35	At Risk	Non-Exempt	PBGC - IT Infrastructure
65	Development Environment	N/A	SciTE 1.7	At Risk	Non-Exempt	PBGC - IT Infrastructure
66	Development Environment	N/A	Si International, Inc. Statisticard 4.1	At Risk	Non-Exempt	PBGC - IT Infrastructure
67	Development Environment	N/A	Softerra LDAP Browser 2.6	At Risk	Non-Exempt	PBGC - IT Infrastructure
68	Development Environment	N/A	SpreadsheetGear, LLC SpreadsheetGear 6	Recommended	Conditional	PBGC - Benefit Calculation and Valuation
69	Development Environment	N/A	Sybase Power Builder 10.5	At Risk	Non-Exempt	PBGC - IT Infrastructure
70	Development Environment	N/A	Sybase Power Builder 8	At Risk	Non-Exempt	PBGC - IT Infrastructure
71	Development Environment	N/A	Web Development Helper 0.8	At Risk	Non-Exempt	PBGC - IT Infrastructure
72	Development Environment	N/A	WinMerge 2.12	At Risk	Non-Exempt	PBGC - IT Infrastructure
73	Development Environment	N/A	WinSCP 3.7	At Risk	Non-Exempt	PBGC - IT Infrastructure
74	Development Environment	N/A	WinSCP 4.2	At Risk	Non-Exempt	PBGC - IT Infrastructure
75	Modeling	N/A	Computer Associates International Inc. BPWin 7.2	At Risk	Non-Exempt	PBGC - IT Infrastructure
76	Modeling	N/A	Computer Associates International Inc.	At Risk	Non-Exempt	PBGC - IT Infrastructure

Ref ID	Category	Sub Category	Technology / Protocol / Product	Grade	Update Sensitivity Indicator	Owner
			Erwin 7.1			
77	Modeling	N/A	Computer Associates International Inc. Erwin 7.2	At Risk	Non-Exempt	PBGC - IT Infrastructure
78	Modeling	N/A	Computer Associates International Inc. Erwin 8.2	Current	Conditional	PBGC - IT Infrastructure
79	Modeling	N/A	Computer Associates International Inc. Model Manager 7.2	At Risk	Non-Exempt	PBGC - IT Infrastructure
80	Modeling	N/A	International Business Machines (IBM) FileNet Process Designer 5.1	Recommended	Non-Exempt	PBGC - IT Infrastructure
81	Modeling	N/A	Metastorm ProVision 6.02	At Risk	Non-Exempt	PBGC - IT Infrastructure
82	Modeling	N/A	Microsoft Visio Professional 2007	Current	Conditional	PBGC - IT Infrastructure
83	Modeling	N/A	Oracle Workflow Builder 2.6	Current	Conditional	PBGC - IT Infrastructure
84	Modeling	N/A	ReSoft Topper 6	At Risk	Non-Exempt	PBGC - IT Infrastructure
85	Modeling	N/A	SolarWinds Network Performance Monitor 10.3	At Risk	Non-Exempt	PBGC - IT Infrastructure
86	Modeling	N/A	SolarWinds Server & Application Monitor 5.2	At Risk	Non-Exempt	PBGC - IT Infrastructure
87	Modeling	N/A	SolarWinds Synthetic End User Monitor 1.5	At Risk	Non-Exempt	PBGC - IT Infrastructure
88	Modeling	N/A	Xming 6.9	At Risk	Non-Exempt	PBGC - IT Infrastructure
89	Packaging and Deployment	N/A	Apache Ant 1.6	At Risk	Non-Exempt	PBGC - IT Infrastructure

Ref ID	Category	Sub Category	Technology / Protocol / Product	Grade	Update Sensitivity Indicator	Owner
90	Packaging and Deployment	N/A	Apache Ant 1.7	Current	Conditional	PBGC - IT Infrastructure
91	Packaging and Deployment	N/A	Apache Ant 1.8	Recommended	Non-Exempt	PBGC - IT Infrastructure
92	Packaging and Deployment	N/A	ComponentSource Wise Package Studio 8	At Risk	Non-Exempt	PBGC - IT Infrastructure
93	Packaging and Deployment	N/A	CruiseControl 1	At Risk	Non-Exempt	PBGC - IT Infrastructure
94	Packaging and Deployment	N/A	CruiseControl 1.3	At Risk	Non-Exempt	PBGC - IT Infrastructure
95	Packaging and Deployment	N/A	Flexera Software InstallShield 2011 Limited Edition 17	At Risk	Non-Exempt	PBGC - IT Infrastructure
96	Packaging and Deployment	N/A	JetBrains TeamCity 6	At Risk	Non-Exempt	PBGC - IT Infrastructure
97	Packaging and Deployment	N/A	Nant 0.91	At Risk	Non-Exempt	PBGC - IT Infrastructure
98	Packaging and Deployment	N/A	Nant 0.95	At Risk	Non-Exempt	PBGC - IT Infrastructure
99	Packaging and Deployment	N/A	Nant 0.84	At Risk	Non-Exempt	PBGC - IT Infrastructure
100	Packaging and Deployment	N/A	Nant 0.85	At Risk	Non-Exempt	PBGC - IT Infrastructure
101	Packaging and Deployment	N/A	Nant 0.86	At Risk	Non-Exempt	PBGC - IT Infrastructure
102	Runtime Libraries APIs Technologies and Standards	N/A	ActiveDBSoft Active Query Builder 2010	At Risk	Non-Exempt	PBGC - IT Infrastructure
103	Runtime Libraries APIs Technologies and Standards	N/A	ActiveDBSoft Active Query Builder ActiveX Edition 1.15	At Risk	Non-Exempt	PBGC - IT Infrastructure
104	Runtime Libraries APIs Technologies and Standards	N/A	ActivePDF Toolkit Professional 2011	At Risk	Conditional	PBGC - IT Infrastructure
105	Runtime Libraries APIs Technologies and Standards	N/A	ActivePDF Webgrabber 3.5	At Risk	Conditional	PBGC - IT Infrastructure
106	Runtime Libraries APIs Technologies	N/A	ActivePDF Webgrabber	At Risk	Conditional	PBGC - IT Infrastructure

Ref ID	Category	Sub Category	Technology / Protocol / Product	Grade	Update Sensitivity Indicator	Owner
	and Standards		Enterprise 2010			
107	Runtime Libraries APIs Technologies and Standards	N/A	Apache Axis 1.1	At Risk	Non-Exempt	PBGC - IT Infrastructure
108	Runtime Libraries APIs Technologies and Standards	N/A	Apache Axis 2.1.5	At Risk	Non-Exempt	PBGC - IT Infrastructure
109	Runtime Libraries APIs Technologies and Standards	N/A	Apache Log4J 1.2	At Risk	Non-Exempt	PBGC - IT Infrastructure
110	Runtime Libraries APIs Technologies and Standards	N/A	Apache MyFaces	Current	Conditional	PBGC - IT Infrastructure
111	Runtime Libraries APIs Technologies and Standards	N/A	Apache Struts 1.2	At Risk	Non-Exempt	PBGC - IT Infrastructure
112	Runtime Libraries APIs Technologies and Standards	N/A	Apache Struts 2	Current	Conditional	PBGC - IT Infrastructure
113	Runtime Libraries APIs Technologies and Standards	N/A	Applian Technologies Replay Capture Suite	At Risk	Non-Exempt	PBGC - IT Infrastructure
114	Runtime Libraries APIs Technologies and Standards	N/A	BeCubed	Current	Conditional	PBGC - IT Infrastructure
115	Runtime Libraries APIs Technologies and Standards	N/A	Benthic Software Benthic Golden 5.7	At Risk	Non-Exempt	PBGC - IT Infrastructure
116	Runtime Libraries APIs Technologies and Standards	N/A	ComponentOne Studio for ActiveX 2010 1.1	At Risk	Non-Exempt	PBGC - IT Infrastructure
117	Runtime Libraries APIs Technologies and Standards	N/A	ComponentOne True DBGrid 1	At Risk	Non-Exempt	PBGC - IT Infrastructure
118	Runtime Libraries APIs Technologies and Standards	N/A	ComponentOne VS View	Current	Conditional	PBGC - IT Infrastructure
119	Runtime Libraries APIs Technologies and Standards	N/A	ComponentSource True DBGrid 5	Current	Conditional	PBGC - IT Infrastructure

Ref ID	Category	Sub Category	Technology / Protocol / Product	Grade	Update Sensitivity Indicator	Owner
120	Runtime Libraries APIs Technologies and Standards	N/A	Ecrion Software XF Rendering Server 2007	At Risk	Non-Exempt	PBGC - IT Infrastructure
121	Runtime Libraries APIs Technologies and Standards	N/A	FarPoint Technologies FarPoint Spread	Current	Conditional	PBGC - IT Infrastructure
122	Runtime Libraries APIs Technologies and Standards	N/A	FIX Protocol, Ltd. Financial Information eXchange (FIX)	Current	Conditional	PBGC - IT Infrastructure
123	Runtime Libraries APIs Technologies and Standards	N/A	iBatis 2.3.4	At Risk	Conditional	PBGC - IT Infrastructure
124	Runtime Libraries APIs Technologies and Standards	N/A	innerMedia DynaZip 4	At Risk	Non-Exempt	PBGC - IT Infrastructure
125	Runtime Libraries APIs Technologies and Standards	N/A	Interactive Data Corporation (IDC) RemotePlus 3.0a	Current	Conditional	PBGC - IT Infrastructure
126	Runtime Libraries APIs Technologies and Standards	N/A	iText 2.1	At Risk	Conditional	PBGC - IT Infrastructure
127	Runtime Libraries APIs Technologies and Standards	N/A	Macrovision EagleActiveX 11.1	Recommended	Conditional	PBGC - IT Infrastructure
128	Runtime Libraries APIs Technologies and Standards	N/A	Microsoft ADO.Net 3	At Risk	Non-Exempt	PBGC - IT Infrastructure
129	Runtime Libraries APIs Technologies and Standards	N/A	Microsoft ADO.Net 4	At Risk	Non-Exempt	PBGC - IT Infrastructure
130	Runtime Libraries APIs Technologies and Standards	N/A	Microsoft DAO 14	At Risk	Non-Exempt	PBGC - IT Infrastructure
131	Runtime Libraries APIs Technologies and Standards	N/A	Microsoft Open Database Connectivity (ODBC) 11	At Risk	Non-Exempt	PBGC - IT Infrastructure
132	Runtime Libraries APIs Technologies and Standards	N/A	Microsoft System.XML 8	At Risk	Non-Exempt	PBGC - IT Infrastructure

Ref ID	Category	Sub Category	Technology / Protocol / Product	Grade	Update Sensitivity Indicator	Owner
133	Runtime Libraries APIs Technologies and Standards	N/A	Microsoft Web Service Enhancements 2	At Risk	Non-Exempt	PBGC - IT Infrastructure
134	Runtime Libraries APIs Technologies and Standards	N/A	Microsoft Web Service Enhancements 3	At Risk	Non-Exempt	PBGC - IT Infrastructure
135	Runtime Libraries APIs Technologies and Standards	N/A	Microsoft Windows Presentation Foundation 8	At Risk	Non-Exempt	PBGC - IT Infrastructure
136	Runtime Libraries APIs Technologies and Standards	N/A	Oracle Business Process Execution Language (BPEL) Process Manager 10g	Current	Non-Exempt	PBGC - IT Infrastructure
137	Runtime Libraries APIs Technologies and Standards	N/A	Oracle Database 10g (Client)	Current	Conditional	PBGC - IT Infrastructure
138	Runtime Libraries APIs Technologies and Standards	N/A	Oracle Database 11g (Client)	Current	Conditional	PBGC - IT Infrastructure
139	Runtime Libraries APIs Technologies and Standards	N/A	Oracle Enterprise JavaBeans 2.1	At Risk	Non-Exempt	PBGC - IT Infrastructure
140	Runtime Libraries APIs Technologies and Standards	N/A	Oracle Enterprise JavaBeans 3	Recommended	Non-Exempt	PBGC - IT Infrastructure
141	Runtime Libraries APIs Technologies and Standards	N/A	Oracle JAAS	Current	Conditional	PBGC - IT Infrastructure
142	Runtime Libraries APIs Technologies and Standards	N/A	Oracle Java Connector Architecture (JCA) 1.5	Current	Conditional	PBGC - IT Infrastructure
143	Runtime Libraries APIs Technologies and Standards	N/A	Oracle Java Database Connectivity (JDBC) 2	At Risk	Non-Exempt	PBGC - IT Infrastructure
144	Runtime Libraries APIs Technologies and Standards	N/A	Oracle Java Database Connectivity	Current	Conditional	PBGC - IT Infrastructure

Ref ID	Category	Sub Category	Technology / Protocol / Product	Grade	Update Sensitivity Indicator	Owner
			(JDBC) 3			
145	Runtime Libraries APIs Technologies and Standards	N/A	Oracle Java Runtime Environment (JRE) 1.7	Recommended	Conditional	PBGC - IT Infrastructure
146	Runtime Libraries APIs Technologies and Standards	N/A	Oracle JavaServer Pages (JSP) 2	At Risk	Non-Exempt	PBGC - IT Infrastructure
147	Runtime Libraries APIs Technologies and Standards	N/A	Oracle JavaServer Pages (JSP) 2.1	Current	Conditional	PBGC - IT Infrastructure
148	Runtime Libraries APIs Technologies and Standards	N/A	Oracle JAXP 1.3	Current	Conditional	PBGC - IT Infrastructure
149	Runtime Libraries APIs Technologies and Standards	N/A	Oracle JAX-RPC 1.1	At Risk	Non-Exempt	PBGC - IT Infrastructure
150	Runtime Libraries APIs Technologies and Standards	N/A	Oracle JAX-WS 1	Current	Conditional	PBGC - IT Infrastructure
151	Runtime Libraries APIs Technologies and Standards	N/A	Oracle JMS 1.2	Current	Conditional	PBGC - IT Infrastructure
152	Runtime Libraries APIs Technologies and Standards	N/A	Oracle ODP.NET 10g	At Risk	Non-Exempt	PBGC - IT Infrastructure
153	Runtime Libraries APIs Technologies and Standards	N/A	Oracle ODP.NET 11g	Current	Conditional	PBGC - IT Infrastructure
154	Runtime Libraries APIs Technologies and Standards	N/A	Oracle SAAJ 1.2	At Risk	Non-Exempt	PBGC - IT Infrastructure
155	Runtime Libraries APIs Technologies and Standards	N/A	Oracle SAAJ 1.3	Current	Conditional	PBGC - IT Infrastructure
156	Runtime Libraries APIs Technologies and Standards	N/A	Oracle Servlet 2.3	At Risk	Non-Exempt	PBGC - IT Infrastructure
157	Runtime Libraries APIs Technologies and Standards	N/A	Oracle Servlet 2.5	At Risk	Non-Exempt	PBGC - IT Infrastructure

Ref ID	Category	Sub Category	Technology / Protocol / Product	Grade	Update Sensitivity Indicator	Owner
158	Runtime Libraries APIs Technologies and Standards	N/A	Oracle SQL*Plus 10.2	At Risk	Non-Exempt	PBGC - IT Infrastructure
159	Runtime Libraries APIs Technologies and Standards	N/A	Oracle TopLink	Current	Conditional	PBGC - IT Infrastructure
160	Runtime Libraries APIs Technologies and Standards	N/A	Pervasive Software PSQL 7.9	At Risk	Non-Exempt	PBGC - IT Infrastructure
161	Runtime Libraries APIs Technologies and Standards	N/A	Redhat Hibernate	At Risk	Non-Exempt	PBGC - IT Infrastructure
162	Runtime Libraries APIs Technologies and Standards	N/A	Samba 0.7	At Risk	Non-Exempt	PBGC - IT Infrastructure
163	Runtime Libraries APIs Technologies and Standards	N/A	Spring Source Spring Framework 2	At Risk	Non-Exempt	PBGC - IT Infrastructure
164	Runtime Libraries APIs Technologies and Standards	N/A	Spring Source Spring Framework 2.5	Current	Conditional	PBGC - IT Infrastructure
165	Runtime Libraries APIs Technologies and Standards	N/A	Spring Source Spring Web Services	At Risk	Non-Exempt	PBGC - IT Infrastructure
166	Runtime Libraries APIs Technologies and Standards	N/A	Tectia ConnectSecure 6.1	At Risk	Non-Exempt	PBGC - IT Infrastructure
167	Runtime Libraries APIs Technologies and Standards	N/A	Tectia ConnectSecure 6.2	Recommended	Conditional	PBGC - IT Infrastructure
168	Runtime Libraries APIs Technologies and Standards	N/A	Terracotta, Inc. Quartz Enterprise Job Scheduler 1.6	Current	Conditional	PBGC - IT Infrastructure
169	Runtime Libraries APIs Technologies and Standards	N/A	UDDI	Current	Conditional	PBGC - IT Infrastructure
170	Runtime Libraries APIs Technologies and Standards	N/A	Unified Expression Language	Current	Conditional	PBGC - IT Infrastructure
171	Runtime Libraries APIs Technologies	N/A	WNA	Current	Conditional	PBGC - IT Infrastructure

Ref ID	Category	Sub Category	Technology / Protocol / Product	Grade	Update Sensitivity Indicator	Owner
	and Standards					
172	Runtime Libraries APIs Technologies and Standards	N/A	WS-I Basic Profile	Current	Conditional	PBGC - IT Infrastructure
173	Runtime Libraries APIs Technologies and Standards	N/A	WS-I Profiles	Current	Conditional	PBGC - IT Infrastructure
174	Runtime Libraries APIs Technologies and Standards	N/A	XBRL International (XII) XBRL	Current	Conditional	PBGC - IT Infrastructure
175	Source Control	N/A	Apache Subversion 2	At Risk	Non-Exempt	PBGC - IT Infrastructure
176	Source Control	N/A	Git GUI 1.6	At Risk	Non-Exempt	PBGC - IT Infrastructure
177	Source Control	N/A	Git GUI 10	At Risk	Non-Exempt	PBGC - IT Infrastructure
178	Source Control	N/A	March Hare Software, Ltd. CVSNT Versioning System 2	At Risk	Non-Exempt	PBGC - IT Infrastructure
179	Source Control	N/A	Mercurial 2.3	At Risk	Non-Exempt	PBGC - IT Infrastructure
180	Source Control	N/A	Microsoft Visual SourceSafe 6	At Risk	Non-Exempt	PBGC - IT Infrastructure
181	Source Control	N/A	Serena Software Inc. PVCS Version Manager 8.1	Current	Conditional	PBGC - IT Infrastructure
182	Source Control	N/A	TortoiseHg 2.5	At Risk	Non-Exempt	PBGC - IT Infrastructure
183	Source Control	N/A	TortoiseSVN 1.7	At Risk	Non-Exempt	PBGC - IT Infrastructure
184	Testing and Validation	N/A	Agitar Technologies AgitarOne	Current	Conditional	PBGC - IT Infrastructure
185	Testing and Validation	N/A	AI Internet Solutions, LLC CSE HTML Validator Professional 11.02	At Risk	Non-Exempt	PBGC - IT Infrastructure
186	Testing and Validation	N/A	Autonomy Qfiniti (E-talk) 3.5	Current	Conditional	PBGC - IT Infrastructure
187	Testing and	N/A	FaciWare FaciPlan	Recommended	Conditional	PBGC - IT

Ref ID	Category	Sub Category	Technology / Protocol / Product	Grade	Update Sensitivity Indicator	Owner
	Validation		2010			Infrastructure
188	Testing and Validation	N/A	Hewlett-Packard (HP) LoadRunner 11	Recommended	Conditional	PBGC - IT Infrastructure
189	Testing and Validation	N/A	Hewlett-Packard (HP) LoadRunner 7.8	At Risk	Non-Exempt	PBGC - IT Infrastructure
190	Testing and Validation	N/A	Hewlett-Packard (HP) LoadRunner 9.1	At Risk	Non-Exempt	PBGC - IT Infrastructure
191	Testing and Validation	N/A	Hewlett-Packard (HP) LoadRunner 9.5	At Risk	Non-Exempt	PBGC - IT Infrastructure
192	Testing and Validation	N/A	Hewlett-Packard (HP) Quality Center 9.1	At Risk	Non-Exempt	PBGC - IT Infrastructure
193	Testing and Validation	N/A	Hewlett-Packard (HP) QuickTest Pro 11	Current	Conditional	PBGC - IT Infrastructure
194	Testing and Validation	N/A	Hewlett-Packard (HP) QuickTest Professional 9	Current	Conditional	PBGC - IT Infrastructure
195	Testing and Validation	N/A	Hewlett-Packard (HP) QuickTest Professional 9	At Risk	Non-Exempt	PBGC - IT Infrastructure
196	Testing and Validation	N/A	Inspyder Insite 3.2	At Risk	Non-Exempt	PBGC - IT Infrastructure
197	Testing and Validation	N/A	JUnit 4	Current	Conditional	PBGC - IT Infrastructure
198	Testing and Validation	N/A	NUnit 2.47	At Risk	Non-Exempt	PBGC - IT Infrastructure
199	Testing and Validation	N/A	Parasoft SOAtest	At Risk	Non-Exempt	PBGC - IT Infrastructure
200	Testing and Validation	N/A	SmartBear soapUI 4	At Risk	Non-Exempt	PBGC - IT Infrastructure
201	Testing and Validation	N/A	Soft Logica WAPT 8	At Risk	Non-Exempt	PBGC - IT Infrastructure
202	Testing and Validation	N/A	Synergex PVCS Tracker 8	At Risk	Non-Exempt	PBGC - IT Infrastructure
203	Testing and Validation	N/A	Synergex PVCS Tracker 8.1	At Risk	Non-Exempt	PBGC - IT Infrastructure

Ref ID	Category	Sub Category	Technology / Protocol / Product	Grade	Update Sensitivity Indicator	Owner
204	Testing and Validation	N/A	Synergex Serena Team Track 6.6	At Risk	Non-Exempt	PBGC - IT Infrastructure
205	Testing and Validation	N/A	Wordtracker Keywords	At Risk	Non-Exempt	PBGC - IT Infrastructure
206	Testing and Validation	N/A	Wordtracker Link Builder	At Risk	Non-Exempt	PBGC - IT Infrastructure
207	Testing and Validation	N/A	Xenu 1.3	At Risk	Non-Exempt	PBGC - IT Infrastructure

5.9 Enterprise-wide Services & Technologies

Enterprise-wide Services and Technologies provide capabilities to the entire enterprise and are not specific to any particular business function. They form a business-agnostic technology layer on top of the foundational infrastructure services provided by the technologies of the Servers and Storage categories. Business solutions embed, use or integrate with the Enterprise-wide services and technologies to save implementation and operational costs, standardize user experience, development, and maintenance efforts among a set of the business solutions.

Ref ID	Category	Sub Category	Technology / Protocol / Product	Grade	Update Sensitivity Indicator	Owner
1	Application Server Framework software	N/A	Adobe ColdFusion 8	Current	Conditional	PBGC - IT Infrastructure
2	Application Server Framework software	N/A	Adobe ColdFusion 9	Recommended	Conditional	PBGC - IT Infrastructure
3	Application Server Framework software	N/A	Apache Ant 1.6	Current	Conditional	PBGC - IT Infrastructure
4	Application Server Framework software	N/A	JBOSS 4.2.3	At Risk	Conditional	PBGC - Participant Services (Benefit Administration)
5	Application Server	N/A	JBOSS Application Server	Restricted	Non-Exempt	PBGC - Participant

Ref ID	Category	Sub Category	Technology / Protocol / Product	Grade	Update Sensitivity Indicator	Owner
	Framework software					Services (Benefit Administration)
6	Application Server Framework software	N/A	Lahey FORTRAN compiler LF95	At Risk	Conditional	IPVFB
7	Application Server Framework software	N/A	Microsoft .Net Framework 1.0	At Risk	Non-Exempt	PBGC - IT Infrastructure
8	Application Server Framework software	N/A	Microsoft .Net Framework 1.1	At Risk	Non-Exempt	PBGC - IT Infrastructure
9	Application Server Framework software	N/A	Microsoft .Net Framework 2.0 SP2	At Risk	Non-Exempt	PBGC - IT Infrastructure
10	Application Server Framework software	N/A	Microsoft .NET Framework 3.5 SP1	At Risk	Conditional	PBGC - IT Infrastructure
11	Application Server Framework software	N/A	Microsoft .NET Framework 4.0	Current	Conditional	PBGC - IT Infrastructure
12	Application Server Framework software	N/A	Microsoft Visual Basic Runtime 5.0	At Risk	Non-Exempt	PBGC - IT Infrastructure
13	Application Server Framework software	N/A	Microsoft Visual Basic Runtime 6.0	At Risk	Non-Exempt	PBGC - IT Infrastructure
14	Application Server Framework software	N/A	Microsoft Visual C++	Current	Non-Exempt	
15	Application Server Framework	N/A	Oracle Application Server 10.1	At Risk	Conditional	PBGC - IT Infrastructure

Ref ID	Category	Sub Category	Technology / Protocol / Product	Grade	Update Sensitivity Indicator	Owner
	software					
16	Application Server Framework software	N/A	Oracle Application Server 10.2	At Risk	Non-Exempt	PBGC - IT Infrastructure
17	Application Server Framework software	N/A	Oracle Forms & Reports 10g	At Risk	Non-Exempt	PBGC - IT Infrastructure
18	Application Server Framework software	N/A	Oracle Java 2 Enterprise Edition (J2EE) 1.5	Current	Conditional	PBGC - IT Infrastructure
19	Application Server Framework software	N/A	Oracle Java 2 Standard Edition (J2SE) 1.5	Current	Conditional	PBGC - IT Infrastructure
20	Application Server Framework software	N/A	Oracle Java Runtime Environment (JRE) 1.6	At Risk	Conditional	PBGC - IT Infrastructure
21	Application Server Framework software	N/A	Oracle JInitiator 1.3.1	At Risk	Non-Exempt	PBGC - IT Infrastructure
22	Application Server Framework software	N/A	Oracle WebLogic Server 11g Enterprise Edition	Current	Exempt	PBGC - IT Infrastructure
23	Application Server Framework software	N/A	SAS Product Suite 9.3	Current	Conditional	
24	Application Server Framework software	N/A	SAS Product Suite 9.4	Recommended	Conditional	
25	Application Server Framework software	N/A	Spring Source Spring Framework 2.5	Current	Conditional	PBGC - IT Infrastructure

Ref ID	Category	Sub Category	Technology / Protocol / Product	Grade	Update Sensitivity Indicator	Owner
26	Application Server Framework software	N/A	Sybase PowerBuilder Runtime 10	At Risk	Non-Exempt	PBGC - IT Infrastructure
27	Batch Processing	N/A	Spring Source Spring Batch 2.0	Current	Conditional	
28	Business Process and Workflow	N/A	International Business Machines (IBM) FileNet BPM 4.5	Current	Conditional	PBGC - Participant Services (Benefit Administration)
29	Business Process and Workflow	N/A	International Business Machines (IBM) FileNet BPM 5.1	Recommended	Conditional	PBGC - Participant Services (Benefit Administration)
30	Business Process and Workflow	N/A	International Business Machines (IBM) FileNet P8 4.5.0	At Risk	Non-Exempt	PBGC - Participant Services (Benefit Administration)
31	Business Process and Workflow	N/A	International Business Machines (IBM) FileNet P8 Process Engine	Restricted	Non-Exempt	PBGC - Participant Services (Benefit Administration)
32	Business Process and Workflow	N/A	Minitab 16	Current	Conditional	PBGC - Participant Services (Benefit Administration)
33	Business Process and Workflow	N/A	Network Automation AutoMate 7	At Risk	Conditional	PBGC - IT Infrastructure
34	Business Process and Workflow	N/A	Oracle Business Process Execution Language (BPEL) 10g	At Risk	Conditional	PBGC - IT Infrastructure
35	Business Process and Workflow	N/A	Oracle Workflow Builder 2.6	Current	Conditional	PBGC - IT Infrastructure
36	Content Management System	N/A	Author-IT Software Corporation Aspect 5.5	Current	Conditional	PBGC - Participant Services (Benefit Administration)
37	Content Management	N/A	Ingeniux Ingeniux 8	Recommended	Conditional	Corporate Communications

Ref ID	Category	Sub Category	Technology / Protocol / Product	Grade	Update Sensitivity Indicator	Owner
	System					(PBGC.gov & Web-based resources)
38	Content Management System	N/A	Oracle WebCenter Content Core Capabilities 11g	Recommended	Conditional	
39	Converged User Experience Web Content Deployment	N/A	Ingeniux Ingeniux 7	Current	Conditional	Corporate Communications (PBGC.gov & Web-based resources)
40	Converged User Experience Web Content Deployment	N/A	Oracle WebCenter Suite 11g	Current	Exempt	PBGC - Participant Services (Benefit Administration)
41	Correspondence Management	N/A	Work Dynamics ccmMercury 4.0	At Risk	Conditional	
42	Correspondence Management	N/A	Work Dynamics ccmMercury 5.3.1	Current	Conditional	
43	Data Quality	N/A	Trillium 7.13	Recommended	Conditional	PBGC - IT Infrastructure
44	Data Quality	N/A	Trillium Director 13	Recommended	Conditional	Address Validation System
45	Data Quality	N/A	Trillium Director 7.11	Restricted	Conditional	Address Validation System
46	Data Quality	N/A	Trillium Quality 13	Recommended	Conditional	Address Validation System
47	Data Quality	N/A	Trillium Quality 6	At Risk	Non-Exempt	Address Validation System
48	DB driven Web Apps	N/A	Oracle Application Express (APEX) 2.1.0.2	At Risk	Non-Exempt	PBGC - IT Infrastructure
49	DB driven Web Apps	N/A	Oracle Application Express (APEX) 3.0.1	At Risk	Non-Exempt	PBGC - IT Infrastructure
50	DB driven Web Apps	N/A	Oracle Application Express (APEX) 4.0	At Risk	Conditional	PBGC - IT Infrastructure
51	DB driven Web Apps	N/A	Oracle Application Express (APEX) 4.1	Current	Conditional	PBGC - IT Infrastructure
52	Directory Services	N/A	Lightweight Directory Access	Current	Conditional	PBGC - IT Infrastructure

Ref ID	Category	Sub Category	Technology / Protocol / Product	Grade	Update Sensitivity Indicator	Owner
			Protocol (LDAP)/LDAP over SSL (LDAPS)			
53	Directory Services	N/A	Microsoft Active Directory 2003	At Risk	Non-Exempt	PBGC - IT Infrastructure
54	Directory Services	N/A	Microsoft Active Directory 2008 R2	At Risk	Non-Exempt	PBGC - IT Infrastructure
55	Directory Services	N/A	Oracle Internet Directory 10g	At Risk	Non-Exempt	PBGC - IT Infrastructure
56	Directory Services	N/A	Oracle Internet Directory 11g	Current	Non-Exempt	PBGC - IT Infrastructure
57	Document Management	N/A	InMagic DB/Text Works 11	At Risk	Non-Exempt	PBGC - IT Infrastructure
58	Document Management	N/A	International Business Machines (IBM) FileNet 4.5	Recommended	Conditional	PBGC - Participant Services (Benefit Administration)
59	Document Management	N/A	International Business Machines (IBM) FileNet Capture 5.2	Current	Conditional	PBGC - Participant Services (Benefit Administration)
60	Document Management	N/A	Open Text Corporation Docs Open 4.0	Current	Conditional	OGC Legal Technologies
61	Document Management	N/A	Oracle WebCenter Interaction 11g	Current	Conditional	PBGC - Participant Services (Benefit Administration)
62	Document Management	N/A	Oracle WebCenter Interaction Collaboration Server 4.2	Current	Conditional	PBGC - Participant Services (Benefit Administration)
63	Document Management	N/A	Plumtree Portal 6.1	At Risk	Conditional	PBGC - IT Infrastructure
64	Document Management	N/A	Plumtree Portal 7.5.1	Current	Conditional	PBGC - IT Infrastructure
65	Electronic Forms	N/A	Adobe LiveCycle Designer 9	Recommended	Conditional	PBGC - IT Infrastructure
66	Electronic Forms	N/A	JetForms	At Risk	Non-Exempt	PBGC - IT Infrastructure
67	ESB	N/A	Oracle Enterprise	Current	Conditional	PBGC - IT

Ref ID	Category	Sub Category	Technology / Protocol / Product	Grade	Update Sensitivity Indicator	Owner
			Service Bus 10g			Infrastructure
68	ESB	N/A	Oracle Service Bus 11g	Recommended	Conditional	PBGC - IT Infrastructure
69	ETL	N/A	Oracle Enterprise Data Quality 11g	Recommended	Conditional	PBGC - Benefit Calculation and Valuation
70	ETL	N/A	Oracle Warehouse Builder 10g	At Risk	Conditional	PBGC - IT Infrastructure
71	ETL	N/A	Pervasive Data Integrator 8.14	At Risk	Non-Exempt	PBGC - Benefit Calculation and Valuation
72	Full text search	N/A	International Business Machines (IBM) FileNet CE 4.5	Current	Conditional	PBGC - Participant Services (Benefit Administration)
73	Full text search	N/A	ISYS Search Software 8.0	At Risk	Non-Exempt	OGC Legal Technologies
74	Full text search	N/A	Visioneer PaperPort 6.0	At Risk	Non-Exempt	
75	Hosted Services infrastructure services hosted by external entities	N/A	Microsoft SharePoint 2010 Cloud	Recommended	Non-Exempt	PBGC - IT Infrastructure
76	Imaging	N/A	Daeja Image Systems ViewOne Applet	At Risk	Non-Exempt	
77	Imaging	N/A	Daeja Image Systems ViewOne Professional	Recommended	Conditional	
78	Imaging	N/A	Informatik TiffDLL80 8.2	Current	Conditional	
79	Imaging	N/A	Visioneer PaperPort 6.0	At Risk	Non-Exempt	
80	Integration	N/A	Dataguis DgDiscover 4.1	Recommended	Conditional	PBGC - IT Infrastructure
81	Integration	N/A	Dataguis DgMasker 4.1	Recommended	Conditional	PBGC - IT Infrastructure
82	Integration	N/A	Interactive Data Corporation (IDC) RemotePlus 3.0a	Current	Conditional	

Ref ID	Category	Sub Category	Technology / Protocol / Product	Grade	Update Sensitivity Indicator	Owner
83	Integration	N/A	Oracle Business Process Execution Language (BPEL) 10g	At Risk	Non-Exempt	PBGC - IT Infrastructure
84	Integration	N/A	Oracle Business Process Execution Language (BPEL) 11g	Recommended	Non-Exempt	PBGC - IT Infrastructure
85	Integration	N/A	Oracle Data Integrator 11g	Recommended	Conditional	PBGC - IT Infrastructure
86	Integration	N/A	Oracle Data Service Integrator	Recommended	Conditional	PBGC - IT Infrastructure
87	Integration	N/A	Oracle Java Connector Architecture (JCA) 1.5	Current	Conditional	PBGC - IT Infrastructure
88	Integration	N/A	Oracle Warehouse Builder 10g	At Risk	Conditional	PBGC - IT Infrastructure
89	Integration	N/A	Pervasive Data Integrator 8.14	At Risk	Non-Exempt	PBGC - Benefit Calculation and Valuation
90	Job Scheduling and Execution	N/A	Quartz 1.6.5	Current	Conditional	
91	Knowledge Management	N/A	Author-IT Software Corporation 4.5	At Risk	Non-Exempt	PBGC - Participant Services (Benefit Administration)
92	Knowledge Management	N/A	InMagic DB/Text Works 11	At Risk	Non-Exempt	PBGC - IT Infrastructure
93	Knowledge Management	N/A	Microsoft SharePoint 2007	At Risk	Conditional	PBGC - IT Infrastructure
94	Knowledge Management	N/A	Microsoft SharePoint 2010 Cloud	Recommended	Conditional	PBGC - IT Infrastructure
95	Knowledge Management	N/A	Microsoft SharePoint 2010	Current	Conditional	PBGC - IT Infrastructure
96	Knowledge Management	N/A	Oracle WebCenter Interaction 11g	Current	Conditional	PBGC - Participant Services (Benefit Administration)
97	Knowledge	N/A	Oracle WebCenter	Current	Conditional	PBGC -

Ref ID	Category	Sub Category	Technology / Protocol / Product	Grade	Update Sensitivity Indicator	Owner
	Management		Interaction Collaboration Server 4.2			Participant Services (Benefit Administration)
98	Letter Generation	N/A	Thunderhead NOW 5.1	Recommended	Conditional	PBGC - Participant Services (Benefit Administration)
99	Master Data Management	N/A	Informatica Multidomain Master Data Management (MDM) hub	Recommended	Conditional	
100	OCR	N/A	Adlib Express Conversion & Recognition Server	Current	Conditional	PBGC - IT Infrastructure
101	OCR	N/A	International Business Machines (IBM) FileNet 4.5	Recommended	Conditional	PBGC - Participant Services (Benefit Administration)
102	OCR	N/A	International Business Machines (IBM) FileNet Image Services 4.1.2	Current	Conditional	
103	OCR	N/A	Visioneer PaperPort 6.0	At Risk	Non-Exempt	
104	Oracle Applications Platform	N/A	Oracle eBusiness Suite 11i	At Risk	Non-Exempt	PBGC - IT Infrastructure
105	Oracle Applications Platform	N/A	Oracle eBusiness Suite 12.1.2	Current	Conditional	PBGC - IT Infrastructure
106	Oracle Applications Platform	N/A	Oracle eBusiness Suite 12.1.3	Recommended	Conditional	PBGC - IT Infrastructure
107	Payment Disbursement	N/A	Treasury Payments	Recommended	Conditional	PBGC - IT Infrastructure
108	Reporting and Analytics	N/A	Bloomberg Professional Service	Current	Exempt	PBGC - IT Infrastructure
109	Reporting and	N/A	CACI FedSelect 4.1	Current	Conditional	Procurement

Ref ID	Category	Sub Category	Technology / Protocol / Product	Grade	Update Sensitivity Indicator	Owner
	Analytics					Management Program
110	Reporting and Analytics	N/A	Computer Associates International Inc. Cleverpath Forest and Trees 7.11	Current	Conditional	
111	Reporting and Analytics	N/A	Concentric Data Systems R&R Report Writer 6.5	At Risk	Non-Exempt	
112	Reporting and Analytics	N/A	DataDynamics ActiveReports 3	Restricted	Conditional	
113	Reporting and Analytics	N/A	DataDynamics ActiveReports Designer 3	Restricted	Conditional	
114	Reporting and Analytics	N/A	International Business Machines (IBM) Cognos 8.4.1	Current	Conditional	PBGC - IT Infrastructure
115	Reporting and Analytics	N/A	Microsoft SharePoint 2010	Current	Non-Exempt	PBGC - IT Infrastructure
116	Reporting and Analytics	N/A	Microsoft SQL Server 2008 R2 Reporting Services (SSRS)	Recommended	Part of Another Product	PBGC - IT Infrastructure
117	Reporting and Analytics	N/A	Microsoft SQL Server 2008 Reporting Services (SSRS)	Current	Part of Another Product	PBGC - IT Infrastructure
118	Reporting and Analytics	N/A	Oracle Reports 9i	At Risk	Non-Exempt	
119	Reporting and Analytics	N/A	S&P Capital IQ Compustat Research Insight 8.4	Current	Exempt	Economic Modeling (PIMS)
120	Reporting and Analytics	N/A	SAP Business Objects Crystal Enterprise product suite 10	At Risk	Conditional	
121	Reporting and Analytics	N/A	SAP Business Objects Crystal Enterprise product	At Risk	Conditional	

Ref ID	Category	Sub Category	Technology / Protocol / Product	Grade	Update Sensitivity Indicator	Owner
			suite 8			
122	Reporting and Analytics	N/A	SAP Business Objects Crystal Reports Pro 10	At Risk	Non-Exempt	
123	Reporting and Analytics	N/A	SAP Business Objects Crystal Reports Pro 11	At Risk	Non-Exempt	
124	Reporting and Analytics	N/A	SAP Business Objects Crystal Reports Pro 8	At Risk	Non-Exempt	
125	Reporting and Analytics	N/A	SAP Business Objects Crystal Reports Pro 8.5	At Risk	Non-Exempt	
126	Secure Online Portal	N/A	Oracle WebCenter 11g	Current	Conditional	PBGC - Participant Services (Benefit Administration)
127	Single Sign on	N/A	International Business Machines (IBM) FileNet 4.5	Current	Conditional	PBGC - Participant Services (Benefit Administration)
128	Transaction Monitor	N/A	Microsoft COM+	At Risk	Non-Exempt	PBGC - IT Infrastructure
129	Transaction Monitor	N/A	Microsoft Distributed Transaction Coordinator (DTC)	At Risk	Non-Exempt	PBGC - IT Infrastructure
130	Transaction Monitor	N/A	Oracle Java Transaction API (JTA) 1.1	Current	Conditional	PBGC - IT Infrastructure
131	Transaction Monitor	N/A	Spring Source Spring Framework Transactional Integrity	Current	Conditional	
132	Warehousing	N/A	Oracle Warehouse Builder 10g	At Risk	Conditional	PBGC - IT Infrastructure
133	Warehousing	N/A	Pervasive Data Integrator 8.14	At Risk	Non-Exempt	PBGC - Benefit Calculation and Valuation

5.10 Storage

Storage includes specialized hardware and software products, internal communication mechanisms, standards and protocols used for permanent storage of and access to raw data as well as for storage system management, maintenance, backup and assurance of the high availability levels of the data stored.

* This section is subject to review as part of the sourcing assessment.

Ref ID	Category	Sub Category	Technology / Protocol / Product	Grade	Update Sensitivity Indicator	Owner
1	Backup	Disk Library	Exagrid Deduplication Solution 4.1.2.784.P22	Current	Exempt	PBGC - IT Infrastructure
2	Backup	Software	Quest Recovery Manager for Active Directory 8.0.1	Current	Exempt	PBGC - IT Infrastructure
3	Backup	Software	Symantec Net Backup 7.1	Current	Exempt	PBGC - IT Infrastructure
4	Backup	Software	Symantec Net Backup 7.5.x	Current	Exempt	PBGC - IT Infrastructure
5	Backup	Tape Drives	Quantum Tape Drive LTO5	Current	Exempt	PBGC - IT Infrastructure
6	Backup	Tape Drives	Tape Drive DLT 8000	At Risk	Exempt	PBGC - IT Infrastructure
7	Backup	Tape Drives	Tape Drive LTO4	At Risk	Exempt	PBGC - IT Infrastructure
8	Backup	Tape Drives	Tape Drive SDLT1	At Risk	Exempt	PBGC - IT Infrastructure
9	Backup	Tape Drives	Tape Drive SDLT2	At Risk	Exempt	PBGC - IT Infrastructure
10	Backup	Tape Library	Hewlett-Packard (HP) Storageworks Tape Library MSL6060	Current	Exempt	PBGC - IT Infrastructure
11	Backup	Tape Library	International Business Machines (IBM) System Storage Tape Library TS3100	Current	Exempt	PBGC - IT Infrastructure
12	Backup	Tape Library	International Business Machines	Current	Exempt	PBGC - IT Infrastructure

Ref ID	Category	Sub Category	Technology / Protocol / Product	Grade	Update Sensitivity Indicator	Owner
			(IBM) System Storage Tape Library TS3310			
13	Backup	Tape Library	Oracle StorageTEK L180	At Risk	Exempt	PBGC - IT Infrastructure
14	Backup	Tape Library	Quantum Tape Library M2500	At Risk	Exempt	PBGC - IT Infrastructure
15	Backup	Tape Library	Quantum Tape Library PX506	Current	Exempt	PBGC - IT Infrastructure
16	Data Retention	N/A	Symantec Net Backup 7.1	Current	Exempt	PBGC - IT Infrastructure
17	File Systems	N/A	Common Internet File System (CIFS)	Current	Exempt	PBGC - IT Infrastructure
18	File Systems	N/A	File Allocation Table 32 (FAT32)	At Risk	Exempt	PBGC - IT Infrastructure
19	File Systems	N/A	NFS	Current	Exempt	PBGC - IT Infrastructure
20	File Systems	N/A	NTFS	Current	Exempt	PBGC - IT Infrastructure
21	File Systems	N/A	VFS	Current	Exempt	PBGC - IT Infrastructure
22	File Systems	N/A	VMFS	Current	Exempt	PBGC - IT Infrastructure
23	SAN Connectivity	Connection Speed, Standards	SAN Connectivity Ethernet Fiber Channel Over Ethernet (FCOE)	Recommended	N/A	PBGC - IT Infrastructure
24	SAN Connectivity	Connection Speed, Standards	SAN Connectivity Fiber 1GB	At Risk	N/A	PBGC - IT Infrastructure
25	SAN Connectivity	Connection Speed, Standards	SAN Connectivity Fiber 2GB	At Risk	N/A	PBGC - IT Infrastructure
26	SAN Connectivity	Connection Speed, Standards	SAN Connectivity Fiber 4GB	Current	N/A	PBGC - IT Infrastructure
27	SAN Connectivity	Connection Speed, Standards	SAN Connectivity Fiber 8GB	Current	N/A	PBGC - IT Infrastructure
28	SAN Connectivity	HBA	eMulex Host Bus Adapter (HBA)	Current	Exempt	PBGC - IT Infrastructure
29	SAN Connectivity	HBA	Hewlett-Packard (HP) Flex Fabric Adapter (built-in on G7 Blades)	Current	Exempt	PBGC - IT Infrastructure

Ref ID	Category	Sub Category	Technology / Protocol / Product	Grade	Update Sensitivity Indicator	Owner
30	SAN Connectivity	HBA	Qlogic Host Bus Adapter (HBA)	Current	Exempt	PBGC - IT Infrastructure
31	Storage H W S W	Attached	Direct-attached SAS	Current	N/A	PBGC - IT Infrastructure
32	Storage H W S W	Attached	Direct-attached SATA	Current	N/A	PBGC - IT Infrastructure
33	Storage H W S W	Attached	Direct-attached SCSI	Current	N/A	PBGC - IT Infrastructure
34	Storage H W S W	Attached	Redundant Array of Independent Disks (RAID) 1 (Attached)	Current	N/A	PBGC - IT Infrastructure
35	Storage H W S W	Attached	Redundant Array of Independent Disks (RAID) 5 (Attached)	Current	N/A	PBGC - IT Infrastructure
36	Storage H W S W	Attached	Redundant Array of Independent Disks (RAID) 6 (Attached)	Current	N/A	PBGC - IT Infrastructure
37	Storage H W S W	Direct-attached	Hewlett-Packard (HP) StorageWorks Modular Smart Array (MSA) 60	At Risk	Conditional	PBGC - IT Infrastructure
38	Storage H W S W	Direct-attached	Hewlett-Packard (HP) StorageWorks Modular Smart Array (MSA) 70	At Risk	Conditional	PBGC - IT Infrastructure
39	Storage H W S W	Direct-attached	Redundant Array of Independent Disks (RAID) 5 (Direct-Attached)	Current	N/A	PBGC - IT Infrastructure
40	Storage H W S W	Direct-attached	Redundant Array of Independent Disks (RAID) 6 (Direct-Attached)	Current	N/A	PBGC - IT Infrastructure
41	Storage H W S W	Management and Support Software	Hewlett-Packard (HP) Storage Essentials 9.5	Current	Exempt	PBGC - IT Infrastructure
42	Storage H W S W	Management and Support Software	Hewlett-Packard (HP) Storage	Recommended	Exempt	PBGC - IT Infrastructure

Ref ID	Category	Sub Category	Technology / Protocol / Product	Grade	Update Sensitivity Indicator	Owner
			Essentials 9.5			
43	Storage H W S W	Management and Support Software	Hitachi Device Manager 6.3.0	Current	Exempt	PBGC - IT Infrastructure
44	Storage H W S W	Management and Support Software	Hitachi HiCommand 1-23-03-08	Current	Exempt	PBGC - IT Infrastructure
45	Storage H W S W	Management and Support Software	Hitachi Hi-Track Manager 5.3	Current	Exempt	PBGC - IT Infrastructure
46	Storage H W S W	Management and Support Software	Hitachi Storage Navigator 8.3.0a	Current	Exempt	PBGC - IT Infrastructure
47	Storage H W S W	Storage Area Network Switches	Brocade 300 FC Switch	Current	Exempt	PBGC - IT Infrastructure
48	Storage H W S W	Storage Area Network Switches	Brocade 4100 FC Switch	Current	Exempt	PBGC - IT Infrastructure
49	Storage H W S W	Storage Area Network Switches	Brocade 5100 FC Switch	Current	Exempt	PBGC - IT Infrastructure
50	Storage H W S W	Storage Area Network Switches	Brocade 7500E FC Switch	Current	Exempt	PBGC - IT Infrastructure
51	Storage H W S W	Storage Area Network Switches	Brocade DCX-S FC Switch	Current	Exempt	PBGC - IT Infrastructure
52	Storage H W S W	Storage Area Network Switches	Hitachi Adaptable Modular Storage (AMS) 1000	At Risk	Conditional	PBGC - IT Infrastructure
53	Storage H W S W	Storage Area Network Switches	Hitachi Adaptable Modular Storage (AMS) 2500	Current	Conditional	PBGC - IT Infrastructure
54	Storage H W S W	Storage Area Network Switches	Hitachi Unified Storage (HUS) 100 series (150)	Current	Conditional	PBGC - IT Infrastructure
55	Storage H W S W	Storage Area Network Switches	Hitachi Unified Storage (VM)	Current	Conditional	PBGC - IT Infrastructure

5.11 Telephony

Telephony covers all hardware appliances and equipment, communication channels, software, protocols and tools used for point-to-point, conference and broadcast voice, and video content exchange in real time. Telephony category also includes solutions for delivery of voice and video content to message boxes and provision of access to the content at a later time.

Ref ID	Category	Sub Category	Technology / Protocol / Product	Grade	Update Sensitivity Indicator	Owner
1	Physical Circuits	N/A	ISDN BRI	Current	Exempt	PBGC - IT Infrastructure
2	Physical Circuits	N/A	ISDN PRI	Current	Exempt	PBGC - IT Infrastructure
3	Physical Circuits	N/A	T1	Current	Exempt	PBGC - IT Infrastructure
4	Video Teleconferencing	N/A	Cisco IP Video Phone E20	Current	Conditional	PBGC - IT Infrastructure
5	Video Teleconferencing	N/A	Microsoft Lync v2013	Recommended	Conditional	PBGC - IT Infrastructure
6	Video Teleconferencing	N/A	PolyCom RMX Bridge 2000	Current	Exempt	PBGC - IT Infrastructure
7	Video Teleconferencing	N/A	PolyCom RMX Bridge 4000	Current	Exempt	PBGC - IT Infrastructure
8	Video Teleconferencing	N/A	Vbrick Video Management System	Recommended	Conditional	PBGC - IT Infrastructure
9	Voice Local PBX	ACD/PBX	NEC SV8300 Rev. L2	Recommended	Exempt	PBGC - IT Infrastructure
10	Voice Local PBX	ACD/PBX	NEC SV8500 Rev. S3	Current	Conditional	PBGC - IT Infrastructure
11	Voice Local PBX	ACD/PBX	NEC UM8700 Rev 3.5.0.347	Recommended	Conditional	PBGC - IT Infrastructure
12	Voice Local PBX	Client Software	NEC GNAV Pro Client 7.0	Recommended	Exempt	PBGC - IT Infrastructure
13	Voice Local PBX	Client Software	NEC QWorX Report Runner 5.1	Current	Exempt	PBGC - IT Infrastructure
14	Voice Local PBX	Client Software	NEC SV8500 PRO	Current	Exempt	PBGC - IT Infrastructure
15	Voice Local PBX	Interactive Voice Reponse	Nortel MPS 500	Current	Exempt	PBGC - IT Infrastructure
16	Voice Local PBX	Phone Sets	NEC Dterm Series E	At Risk	Exempt	PBGC - IT Infrastructure
17	Voice Local PBX	Phone Sets	NEC Dterm Series I	Current	Exempt	PBGC - IT Infrastructure
18	Voice Local PBX	Server Software	@Comm Corporation CommView 2.0.2.5c	Current	Exempt	PBGC - IT Infrastructure
19	Voice Local PBX	Server Software	NEC GNAV Pro 6.1	At Risk	Exempt	PBGC - IT Infrastructure

Ref ID	Category	Sub Category	Technology / Protocol / Product	Grade	Update Sensitivity Indicator	Owner
20	Voice Local PBX	Server Software	NEC GNAV Pro 7.0	At Risk	Exempt	PBGC - IT Infrastructure
21	Voice Local PBX	Server Software	NEC QWorX 5.1	Current	Exempt	PBGC - IT Infrastructure
22	Voice Local PBX	Server Software	NEC GNAV Pro 8	Current	Exempt	PBGC - IT Infrastructure
23	Voice Mail	N/A	DialLogic Media Board D/240JCT-T-1	At Risk	Conditional	PBGC - IT Infrastructure
24	VoIP	Protocols	MPLS	Current	Exempt	PBGC - IT Infrastructure
25	VoIP	Switches	Cisco workgroup switches 37xx (3750)	Current	Exempt	PBGC - IT Infrastructure

5.12 IT Facilities

IT Facilities describe specialized equipment, hardware, software and protocols, which ensure a proper physical operating environment and houses the server and communications devices in data centers, server rooms and communication closets. The IT Facilities equipment maintains power, temperature, and humidity within the acceptable range and triggers automatic shutdown of the housed server and communications devices when the proper physical operating environment cannot be maintained.

Security of the IT Facilities is covered by the physical access subcategory of the Security category.

* This is subject to removal due to the sourcing assessment review.

Ref ID	Category	Sub Category	Technology / Protocol / Product	Grade	Update Sensitivity Indicator	Owner
1	A C	N/A	Emerson Network Power Liebert AC FH116GUASM	Current	Exempt	PBGC - IT Infrastructure
2	A C	N/A	Emerson Network Power Liebert AC FH127WUA10	Current	Exempt	PBGC - IT Infrastructure
3	A C	N/A	Emerson Network Power Liebert AC FH315W-A00	At Risk	Exempt	PBGC - IT Infrastructure
4	A C	N/A	Emerson Network	Current	Exempt	PBGC - IT

Ref ID	Category	Sub Category	Technology / Protocol / Product	Grade	Update Sensitivity Indicator	Owner
			Power Liebert AC FH315W-AAGS			Infrastructure
5	Fire Detection System	N/A	Bevan Security Simplex 4020	Current	Exempt	PBGC - IT Infrastructure
6	Fire Suppression System	N/A	Honeywell Notifier Fire Alarm Control Panel (Onyx Series) NFS-320	Current	Exempt	PBGC - IT Infrastructure
7	Monitoring equipment and software	N/A	Crestron Xpanel EXE	Current	Exempt	PBGC - IT Infrastructure
8	Monitoring equipment and software	N/A	Emerson Network Power Liebert SiteScan Web 5.2	Current	Exempt	PBGC - IT Infrastructure
9	Monitoring equipment and software	N/A	Temperature Guard	Current	Exempt	PBGC - IT Infrastructure
10	Power supply and backup	UPS Equipment	Eaton Powerware Battery 9390	Current	Exempt	PBGC - IT Infrastructure
11	Power supply and backup	UPS Equipment	Emerson Network Power Liebert UPS 610	Current	Exempt	PBGC - IT Infrastructure
12	Power supply and backup	UPS Equipment	MGE Galaxy PW 225 kVa / 200kW	Current	Exempt	PBGC - IT Infrastructure
13	Power supply and backup	UPS Equipment	MGE MultiSlot Communications Rack Mount Chassis 66071	Current	Exempt	PBGC - IT Infrastructure
14	Power supply and backup	UPS Equipment	MGE XML Web Card 66073	Current	Exempt	PBGC - IT Infrastructure
15	Power supply and backup	UPS Software	MGE Linux Shutdown Agent 1.01	Recommended	Exempt	PBGC - IT Infrastructure
16	Power supply and backup	UPS Software	MGE Online Monitoring	Current	Exempt	PBGC - IT Infrastructure
17	Power supply and backup	UPS Software	MGE Solaris Shutdown Agent 1.01	Recommended	Exempt	PBGC - IT Infrastructure
18	Power supply and backup	UPS Software	MGE Windows Shutdown Agent 1.01	Current	Exempt	PBGC - IT Infrastructure

Ref ID	Category	Sub Category	Technology / Protocol / Product	Grade	Update Sensitivity Indicator	Owner
19	Pump	N/A	Weinman G160A	Current	Exempt	PBGC - IT Infrastructure
20	Rack LCD Panel	N/A	Hewlett-Packard (HP) KVM Console TFT7600 G2	Current	Exempt	PBGC - IT Infrastructure
21	Rack PDUs	N/A	Hewlett-Packard (HP) 24A High Voltage US/JP Modular PDU (252663-D72)	Current	Exempt	PBGC - IT Infrastructure
22	Rack PDUs	N/A	Hewlett-Packard (HP) 24A HV Core Only Corded PDU (252663-D74)	Current	Exempt	PBGC - IT Infrastructure
23	Racks	N/A	Rack 19"-wide	At Risk	Exempt	PBGC - IT Infrastructure
24	Racks	N/A	Rack 24"-wide	Restricted	Exempt	PBGC - IT Infrastructure
25	Super Charger	N/A	Tranter SuperCharger	Current	Exempt	PBGC - IT Infrastructure