

The O'SHAUGHNESSY

ST. CATHERINE UNIVERSITY

Technical Specifications 2019-2020



**WOMEN
OF SUBSTANCE**
AT ST. CATHERINE UNIVERSITY



Table of Contents

GENERAL INFORMATION.....1

The O'Shaughnessy	1
Front of House Management	1
Local Information and Services	2
Minneapolis/St. Paul Area Attractions	3
Taxi Services	3
Disability Access	3
Parking.....	3
Laundry & Dry Cleaning.....	3
Time Zone.....	3
Emergency phone numbers	3
Medical Services	4
Area Codes	4
Travel Directions.....	4

MANAGEMENT5

Production Spaces	5
Stage Manager's Console	5
Crews.....	5
Disability Access	5

POLICIES6

The O'Shaughnessy	6
-------------------------	---

LOAD-IN7

Loading Dock:	7
Parking:.....	7

CARPENTRY9

Seating.....	9
Stage Dimensions	9
Orchestra Pit.....	9
Stage Floor.....	9
Support Areas.....	10
House Draperies (Soft Goods)	10
Line Set Data.....	10
Storage	10
Carpentry Notes	11

LIGHTING13

Power	13
Dimmers	13
Control.....	13
Circuits (dimmers)	13
Circuit (dimmer) chart.....	13

Front of House Positions	14
Equipment Inventory.....	14
Lighting Hardware:	14
Followspots:	15
Cable Inventory (spares after repertory plot):	15
Film, Slide, Video and Projection Equipment	15
SCU Theater Department Equipment:.....	15
Lighting Notes.....	15

SOUND 17

Power	17
Wiring.....	17
Control Locations	17
Assistive Listening system	17
Monitor/Paging System.....	17
Production Communications.....	17
Equipment inventory.....	17

PROPS 21

Orchestra Pit.....	21
Music Staging	21
Dance Floors.....	21
Speaker's Lecterns.....	22
Miscellaneous.....	22
Quick Change Booths	22

WARDROBE 23

Dressing rooms.....	23
Wardrobe Area.....	23
Laundry & Dry Cleaning.....	23
Quick Change Booths	23
Wardrobe Notes.....	23

ATTACHMENTS..... 25

Repertory Fly Rail Schedule.....	25
Blank Fly Rail Schedule	26
Dimmer/Circuit Chart	27
Multi Cable inventory.....	28
Floor Plan.....	29
Side Elevation	31
Seating Chart	33
Sound Layout.....	35
Maps.....	37
St. Catherine University Campus Map.....	38
Sightlines	39
Loading Dock and Artist Bus Parking	41
Rigging Points	42



General Information

The O'Shaughnessy
 St. Catherine University
 Mail: 2004 Randolph Avenue, F-24, Saint Paul, MN. 55105
 Email: oshaughnessy@stkate.edu
 Street/Navigation Address: 1942 Randolph Avenue, St. Paul MN. USA
 Latitude: 44.9258 Longitude: -93.1815

Technical Services

NOTE: Please contact Kevin A. Jones for labor needs and estimates.

Production Manager.....	Kevin A. Jones	651.690.6702
Production Services Coordinator	Chadwick Cook	651.690.8699
House Technicians.....	Mary Beth Zorn	651.690.6891
.....	Steve Bennett	651.690.6891
.....	Roger Rosvold	651.690.6891
.....	Matt Erkel	651.690.6891
I.A.T.S.E. LOCAL #13 Business Agent.....	Mat Terwilliger	612.379.7564

Front of House Management

Director.....	Paul Organisak	651.690.6921
Deputy Director	Ross Willits	651.690.6759
Events Manager	Nora Bengel	651.690.6743
Ticket Office Telephone		651.690.6700
Outside Ticket Agency	(Etix@)	919.653.0443 or 800.514.3849

St. Catherine University

St. Catherine University (SCU), located in the heart of one of the nation's most vital cultural centers, offers its students a wide variety of resources for an excellent education. St. Catherine University is the largest and most comprehensive Catholic University for women in the country. Through a diversity of programs, the University offers the intimacy of a four-year liberal arts university and the opportunity to complete baccalaureate, associate, master's and doctoral degrees in a variety of health-care specialties, liberal arts, and professional programs. Committed to meeting the educational needs of women of all ages, St. Catherine's offers many of its bachelor's and master's degree programs in both traditional and weekend formats. With beautiful campuses in St. Paul and Minneapolis, the University has a total enrollment of over 5,000. Three basic values have shaped the University since its inception in 1905: a devotion to the liberal arts, a belief in the potential of women, and the formation of strong personal values. The University's excellent academic reputation is complemented by its commitment to strengthening students' leadership abilities and to providing a variety of leadership opportunities through student government, clubs, and organizations.

The Mission of the University

- *We educate women to lead and influence.*
- *We educate at all degree levels through valuing and integrating the liberal arts and professional education within the Catholic intellectual tradition, emphasizing scholarly inquiry and social justice teaching as lived by the Sisters of St. Joseph of Carondelet.*
- *We welcome a rich diversity of students, with a baccalaureate college for women at the heart of the university and graduate and adult colleges for women and men. Committed to excellence and opportunity, St. Catherine University develops leaders who act with integrity.*

The History of the University

The Sisters of St. Joseph of Carondelet, with the leadership of Mother Seraphine Ireland, founded St. Catherine University (The College of St. Catherine until 2009) in St. Paul in 1905. The University is named for St. Catherine of Alexandria, the fourth-century Egyptian lay philosopher who suffered martyrdom for her faith. A site for the University was chosen at the top of the city of St. Paul's second-highest hill, in the area now known as Highland Village. The first benefactor was Hugh Derham of Rosemount, Minnesota, who contributed \$20,000 for the first building. The building, named Derham Hall opened in January 1905, offering classes to high school boarding students and lower-division University students. Upper-division University courses were first offered in the academic year of 1911-1912. In spring 1913, Bachelor of Arts degrees were conferred on the first two students to complete four years at the new institution. Since then, the University has continued to provide baccalaureate degrees in liberal arts to women in an atmosphere sensitive to women's needs and concerns. St. Catherine University also offers graduate degrees to men and women in over 100 areas of studies.

Local Information and Services

NOTE: The following services are located near the campus. SCU does not endorse these services.

Area Hotels:

Many hotels are available in the Twin City metro area. Here are just a few examples within 15 minutes travel time (they are not sorted by comfort or proximity to The O'Shaughnessy):

<u>DAYS INN Roseville</u> 2550 Cleveland Ave. N. Roseville, 55113 651.636.6730	<u>COURTYARD BY MARRIOT</u> 7800 Bloomington Avenue S. Bloomington, MN 55425 952-876-0100	<u>HILTON Airport/Mall of America</u> 3800 American Boulevard East Bloomington, MN 55425-1658 952.854.2100
<u>DAYS INN St. Paul</u> 1964 University Avenue St. Paul MN 55104 651.645.8681	<u>MINNEAPOLIS MARRIOTT AIRPORT</u> 2020 American Boulevard Bloomington, 55425 612.854.7441	<u>THE SAINT PAUL HOTEL</u> 350 Market St. St. Paul, 55102 651.292.9292/1.800.457.9292
<u>EMBASSY SUITES</u> 2800 American Boulevard Bloomington, MN 55431 952.884.4811/1.800.362.2779	<u>CROWNE PLAZA RIVERFRONT ST. PAUL</u> 11 E. Kellogg Blvd. St. Paul, 55101 651.292.1900/1.800.593.5708	<u>HOLIDAY INN RIVERCENTRE</u> 175W. 7th St. St. Paul, 55102 651.225.1515
<u>BEST WESTERN KELLY INN</u> 161 St. Anthony Avenue St. Paul, 55103 651.227.8711/1.800.238.8000		<u>COUNTRY INN & SUITES</u> 2221 Killebrew Drive Bloomington, MN. 55425 952.831.9595/888.201.1746

Food

There are a variety of ethnic and vegetarian restaurants in the area. These are a selection of nearby restaurants, delis & grocery stores:

<u>Vina</u> (Vietnamese).....651.698.8408	<u>Highland Grill</u>651.690.1173
<u>Whole Foods</u>651.690.0197	<u>Lund's Market</u> (groceries)651.698.5845
Groveland Tap651.699.5058	<u>Luci Ancora</u>651.698.5845 (Reservations Suggested)
Jimmy John's651.698.8828	<u>Cecil's Deli</u>651.698.6276

There is also: Smash Burger, Arby's, Baker's Square, Chipotle Mexican Grill, Punch Wood Fired Pizza, Bruegger's Bagel Bakery, Leeanne Chin, Potbelly Sandwich Shop, and Panera Bread as well as many others.

Coffeeshouses

<u>Quixotic Coffee</u>769 Cleveland Ave. S.	651.699.5448
<u>Caribou Coffee Co.</u>1817 Randolph Ave.	651.698.4702
<u>Starbuck's</u>2078 Ford Pkwy.	651.699.9409

Theatrical Suppliers and Rental Outlets

<u>American Hi Tech Rentals</u>952.445.5226	Video Projectors, Screens, Lenses, etc.
<u>Audio Logic Systems</u>952.400.2222	Audio Systems and Production Support
<u>Farber Sound</u>763.235.1200	Professional Audio/Video/Lighting Services
<u>Gopher Stage Lighting</u>612.871.0138	General Theatrical Supplier
<u>Norcostco</u>763.546.9644	General Theatrical Supplier
<u>Reuhling Associates</u>763.420.7778	Intelligent Lighting Supplier LED & Fiber Optic Drops
<u>Twin Cities Drum Collective</u>651.455.4040	Retail Drums Store and Custom Manufacturer
<u>Total Music Systems</u>651.644.7102	Back line Rental
<u>Twin Cities Magic & Costume</u> 651.227.7888	Costume Rental- Fog rental – it's Magic!
<u>Willie's American Guitars</u>651.699.1913	Guitar supplier extraordinaire
<u>Tour Supply Inc.</u>800.933.8687x3	The name says it all – There is a St. Paul office...

Medical Services

Hospital:

- Regions Hospital (Health Partners) 640 Jackson Street, St. Paul, 55101 651.254.3456
 - o Emergency Services 651.221.8922
- United Hospital (Allina) 333 N. Smith Avenue, St. Paul, 55102 651.241.8000
 - o Emergency Services: 651.220.8755

Chiropractors:

- Caron Chiropractic Health Clinic 651.699.6044
- Highland Chiropractic Center, Dr. Richard C. Froehle 651.698.6803
- Dr. Keith Prussing, Minneapolis 612.872.6633

Massage:

- Joshua Perrizo 612.875.0090

Dentist:

- Dental Referral Services 800.511.8663

Area Codes

There are four area codes in the metropolitan area. Minneapolis is area code 612. St Paul's area code is 651. The NW suburbs of Minneapolis are 763. The southwestern suburbs of Minneapolis are 952.

Travel Directions

The O'Shaughnessy is located on the St. Paul Campus of St. Catherine University. The campus is located between Fairview and Cleveland on Randolph Avenue. ([See map in attachments](#)).

As you enter the campus through gate 3 The O'Shaughnessy is the first building on your right.

The [Stage Door](#) entrance is yellow and located next to the loading dock.

From I 94 East Bound (From Minneapolis):

- Take CRETIN - VANDALIA exit.
- Turn Right on CRETIN AVENUE south 2.01 mi.
- Turn Left on RANDOLPH AVENUE east 0.37 mi.
- Turn Right just past PRIOR AVENUE south at Gate 3.

From West Bound on I 94 (From Wisconsin):

- Take SNELLING AVENUE Exit.
- Turn Left on SNELLING AVENUE south 1.69 mi.
- Turn Right on RANDOLPH AVENUE west 0.86 mi.
- Just past South HOWELL STREET Turn left go south at Gate 3

From I 35 E (From the North or South):

- Take RANDOLPH AVENUE Exit.
- Turn on RANDOLPH AVENUE Go west 2 mi.
- Just Past S. HOWELL ST Turn left In Gate 3.

From I 494 or Highway 62 (Crosstown) or the Minneapolis - St. Paul Airport:

- Take HWY. 5 north (to St. Paul).
- Go Straight on State HWY. 5 northeast 0.27 mi.
- Take EDGCUMBE/SHEPARD RD Exit.
- Take Left fork on EDGCUMBE ROAD
- Follow EDGCUMBE ROAD
- Go Straight on SOUTH FAIRVIEW AVENUE north 1.15 mi.
- Turn Left on RANDOLPH AVENUE west 0.38 mi.
- Just past S. HOWELL STREET turn left go south in Gate 3.



Production Spaces

Dressing Rooms

There are two small dressing rooms and a green room that may be used as production office space (if not needed for the event). There are, additionally, two 'chorus' style dressing rooms on the lower level. The two stage level dressing rooms and the Green Room have a shared phone line (651.690.6661) for local calls only. Video and audio monitors of the stage in each room. The fax numbers for The O'Shaughnessy are: 651.690.6769 (F.O.H.) & 651.690.8759 (Production). There is very limited access to copiers in the building. There is a Kinko's 5 minutes away. Additional phone lines are available at an additional charge.

Green Room

The green room is located stage right at stage level. It may be used as a dressing room if needed. Privacy curtains are available. Approximate dimensions: 23'-6" x 32'-0" (7.16m x 9.75m). There is a video and audio monitor system from stage. Telephone available for local calls (651.690.6661) A cleaning fee may be assessed for cleanup of the floor, furniture or green room because of food or drink spillage.

Rehearsal Spaces

No additional rehearsal space is normally available. Special arrangements may be made at an additional charge.

Stage Manager's Console

Stage Manager's console located downstage left. There are 2 channels of ClearCom® communication located on it. Controls for the orchestra pit elevator, the orchestra shell ceiling, and the lighting bridge are located here. Audio or video monitors available including lighting console remote monitors.

Crews

I.A.T.S.E Local #13 represents stage crews. Please contact the [Production Manager](#), for your labor needs before contacting I.A.T.S.E. Local 13.
[Kevin A. Jones](#) 651.690.6702
I.A.T.S.E. Local #13 Business Agent [Mat Terwilliger](#) 612.379.7564

Disability Access

The handicap accessible seats are located on the Main Floor Rear sides of the theater. There is room for five wheel chairs and companion seats on each side with two additional seats located Main Floor Row 'J' house right (stage left). ([See the attached Seating Chart](#)) Assistive listening units are available (10 units, Listen radio system). Handicap rest room facilities and drinking fountain are Main Floor Right at the north end of the lobby. There are no specifically designed handicapped dressing room facilities. There are two dressing rooms on stage level ([see Dressing Rooms](#)). There is no handicap access to the balcony or control booths. There is ramp access to the stage at the loading dock and from the accessible ramps on the north and south sides of the building.

Policies

Smoking:

St. Catherine University is a tobacco and smoke free campus. Smoking is not permitted on the campus grounds, parking lots, or in any campus building, including The O'Shaughnessy

Use of Alcohol and Drugs:

St. Catherine University recognizes that alcohol and drug use can create health, safety, social and legal problems. SCU is therefore committed to maintaining a safe and healthy work and educational environment, free from the unlawful use of alcohol and drugs.

Sexual Harassment:

St. Catherine University believes that all members of the campus community are entitled to an environment that enables them to develop and contribute to their full capacity. When sexual harassment occurs the standards of the institution are violated and the environment is disrupted. Sexual harassment is prohibited at St. Catherine University. Sexual Harassment is a form of sex discrimination specifically prohibited by Title VII of the Civil Rights Act of 1964 and 1991, and by the Minnesota Human Rights Act. Specifically, sexual harassment committed on property owned or rented by St. Catherine University, by a student, faculty, staff member or visitor against any student, faculty, staff member or a visitor is prohibited and shall be considered a violation of this policy.

The O'Shaughnessy

The staff and crews of The O'Shaughnessy work to support the needs of all clients and visitors to the auditorium. The O'Shaughnessy will attempt to work with all clients to present the best programming possible. The O'Shaughnessy reserves the following rights:

- House retains control of premises, operations and equipment, and will regulate audio levels, require adherence to standard safety practices, and limit access backstage to necessary personnel only.
- As a general policy, no food or beverages are permitted on stage (unless required by a script), in the wings, green room or in the house.
- All work conditions will be as stated in the existing labor contract between St. Catherine University and I.A.T.S.E Local #13. These conditions include (but are not limited to):
 - Meal and work breaks for crew is required unless penalties are incurred.
 - There must be a break between days of work unless penalties are incurred.

The O'Shaughnessy is committed to assisting clients in presenting the best event at the lowest cost. Labor overtime can be costly. Please contact The O'Shaughnessy [Production Manager](#) for assistance in planning the labor needs for your event.

- House opens ½ hour prior to curtain unless otherwise directed by renter or by special audience requirements.
- Intermissions will be 15 minutes for a main floor event and 20 minutes for a full house event unless otherwise directed by renter or by special audience requirements.
- Late seating will be continuous unless otherwise directed by renter.
- No items may be sold from the stage or in the seating area.
- Renter shall pay all sales tax and 20% net gross commission for all merchandise or lobby sales of any type.
- Renter agrees to pay all BMI, ASCAP and SESAC fees directly to these organizations.

Load-In

Loading Dock:

The loading dock of The O'Shaughnessy is located on the east side of the building with access from Randolph Avenue through Gate 3 ([See Attachments](#)).

- There is a short (2'-3" [.68m] wide x 5'-0" [1.52m]) ramp available.
- The dock can accommodate 1 truck at a time at dock level. The dock is 11'-0" (3.35m) wide X 2'-0" (.609m) high.
- The dock is approximately 45' (13.71m) from the stage right doors. The load-in is through the theater department scene shop & across a hallway.
- The dock door is 10'-8" (3.25m) wide X 9'-3" (2.82m) high.
- The hallway doors are 9'-8" (2.94m) wide X 9'-11" (3.02m) high.
- Truck, Artist bus, and truck loaders are available by special arrangement. Contact the [Production Manager](#) to discuss labor requirements.
- There is one shore power or hook-up for tour buses available.

Parking:

Trucks and other performers may be parked in the large O'Shaughnessy lot located in the southeast corner of the campus. This is approximately one city block away from the [stage door](#). Special arrangements can be made at certain times of the year for special parking needs. Contact the [Production Manager](#) to discuss parking requirements.

- There is one shore power or hook-up for tour buses available in the loading dock area.
- There are standard exterior ac outlets in the area north of the Frey Theatre.
- Bus and bus parking information for educational performances available [here](#).

Loading Dock and Truck / Bus Parking [here](#)

Seating

The O'Shaughnessy has a moveable George Izenour designed ceiling. The ceiling converts the theater from an seating capacity of 1,799 seats to an auditorium with 638-713 seats depending on the pit seating configuration. Change over time is roughly 20 minutes, not including lighting refocus.

- There is an additional charge for the setup of pit seating.
- There is an additional charge for removing seats for in house technical positions or side aisles on the main floor. These changes also reduce available seats inventory for sale. ([See Attachments for seating chart](#))

Main Floor ..	638	(with 12 disability seating locations)
Additional Pit Seating .	75	
Balcony ..	1,086	
Total Capacity	1,799	(with disability seating)

Stage Dimensions

- Proscenium is 25'-1" (7.65m) high x 51'-11" (15.82m) wide with ceiling in the highest position or 20'-1" (6.12m) high x 51'-11" (15.82m) wide with ceiling in the lowest position.
- Wing space wall to wall is 101'-0" (30.78m). Stage right has a heating duct obstruction downstage on the deck. Stage left has the fly rail and Stage Manager's console as deck obstructions. ([See Attachments for floor plan.](#))
- The normal repertory masking opening is 40'-0" (12.19m).
- Grid height is 65'-0" (19.81m), but maximum working height is 62'-0" (18.90m).
- Average minimum batten height is 4'-9" (1.44m)
- Stage Height is 3'-5 1/2" (1.054m) above main floor audience level in the front row.
- Stage Depth is 36'7" (11.16m) from plaster line to back wall. There is a 4'-11" (1.5m) apron in front of the plaster line before the elevator that creates the orchestra / pit seating area. The last counterweighted line set is 24'-4" (7.41m) from the plaster line. Line set #37 (the most upstage batten) is 29'-3" (8.91m) from downstage edge of the apron. Line set #37 to the most upstage wall is 12'-3" (3.73m). (see [Floor Plan](#))

Orchestra Pit

The Orchestra pit is an elongated hexagon shape and extends under the edge of the stage when the elevator is at pit level. The hydraulic elevator stops at 4 levels (basement, orchestra pit, house floor, and stage). It may be operated from the Stage Manager's console (stage left) or with a hand held controller from the pit itself. The downstage edge of the pit is 19'-10" (6.04m) wide and the upstage edge is 40'-6" (12.34m). At the widest the pit is 48'-0" (14.63m). ([See Attachments for floor plan.](#))

Stage Floor

- The stage floor is red oak, stained ebony, without any sealer. The upstage center portion of the stage (inside the orchestral shell) is ebony stained concrete. There are no traps or floor pockets in the performance area (from the pit line to the last line set and the full proscenium opening) in the floor. The center (performance area) was replaced summer of 1998 with a Bio-Cushion II® sprung dance floor.
- No fastening into the floor is allowed.
- No painting is allowed onstage. No loose glitter, flitter, etc. is allowed onstage.
- No food or beverages (except water or props) are allowed onstage.
- A cleaning fee may be assessed for cleanup of the stage floor, building furniture or Green Room because of food or drink spillage.

These dance floors are available at additional charge:

- Black Harlequin® dance floor approximately 48' (14.630 m) wide x 30' (9.14 m) deep in six panels.
- Black Rosco Arabesque® tap floor approximately 65' (19.812 m) wide x 32' (9.753 m) deep in five panels. This floor is suitable for tap & percussive dance. It may be required for some types of events to protect the stage floor.
- Floor tapers are available. Black Gaffer's or vinyl floor tapes are available as options for the floors.

Please note there is an additional charge for dance floor use. Please contact the [Production Manager](#) for more details.

Support Areas

- Crossover: There is a crossover hallway located upstage behind the stage house.
- Access: The crossover hallway connects the [stage door](#), scene shop, stage level dressing rooms, stage left and stage right. There are doors stage left and stage right to front of house (stage right access through green room area).
- Just inside the stage door is a stairway down to the larger "chorus" dressing rooms. Wardrobe may be taken to the basement level on the orchestra pit and carried up a short flight of stairs to these dressing rooms.
- Shop area: The shop space in The Mother Antonia McHugh Fine Arts Center is in use by the Theater Department. Although arrangements can be made to accommodate most load-in and load-out situations this space is not normally available. There is a charge for the use of
- Please contact the [Production Manager](#) for more details or special arrangements (651.690.6702).

House Draperies (Soft Goods)

House Curtain: Auburgine velour with 150% fullness. It may be traveled or guillotined manually DSL.

Valance: Auburgine velour with no fullness.

House Legs: (4) pairs of black velour legs 26'-0" (7.92m) h X 16'-0" (4.88m) w no fullness sewn in.

House Borders: (4) black velour borders 8'-0" (2.44m) h X 68'-0" (20.73m) w no fullness sewn in.

Full Stage: (For repertory hanging locations see line schedule)

- (1) Black velour traveler 26'-0" (7.92m) high X 54'-0" (16.46m) no fullness sewn in.
- (1) Black sharkstooth scrim 29'-0" (8.84m) high X 60'-0" (18.29m) wide.
- (1) Black Darvella® sharkstooth scrim 29'-0" (8.84m) high X 60'-0" (18.29m) wide.
- (1) White Darvella® sharkstooth scrim 29'-0" (8.84m) high X 60'-0" (18.29m) wide.
- (1) Rosco Plastic RP Drop (Twin White) 30'-0" (9.14m) high X 60'-0" (18.29m) wide
- (1) Natural muslin drop 30'-0" x 54'-0" 30'-0" (9.14m) high X 54'-0" (16.46m) wide (Seamed)

Normal repertory masking width of the soft goods is 40' (12.10m) wide.

Borders trim at approximately 20' (6.1m) high.

Line Set Data

([See Attachments for Repertory Line Plot.](#))

- Most battens available for soft goods. Exceptions are the 4 Electrics (Electric 1a & 1b, LS# 14,27, and 31), the Valance House Act Curtain (LS# 0 & 1) and black traveler (LS#34).
- 1A & 1B Electric Bridge is counterweighted and electrically winched. These Bridge positions are located at 3'-2" (.96m) and 4'-2" (1.27m) from the plaster line. The upstage batten is 0'-8" (.20m) higher than the downstage pipe. This winch is operated from the Stage Manager's console DSL.
- Maximum travel of pipe is 62'-0" (18.90m). Minimum height varies by set.
- Battens: 38 line sets @ roughly 6" on center with 5 lift lines per set. All battens are schedule 80 - 1½" OD pipe.
- Type: Single purchase counterweight type system. It uses upright blocks and is synthetic rope.
- Each arbor has a total weight capacity of 850 lb. (385.55 kg.), not including pipe weight.
- 13,700 lb. (6214 kg.) total counterweight available.
- Battens are 63'-0" (16.76m) in length except as noted.
- 65 spot sheaves and 2,000' of Multiline II available. Most are used in the repertory plot. Line set sheaves may be moved with permission.
- Dead spaces in the grid (2) at 7'-9" (2.34m) & 17'-9" (5.38m) each space is 1'-6" (.46m) wide.
- Orchestra shell ceiling at 27'-6" (8.38m) high X 2'-6" (.76m) deep when stored against back wall of the stage house ([See Attachments](#), [Side Elevation](#), [Floor Plan](#))
- Loading gallery is at the grid level only.

Storage

The basement below the stage is the main storage area for The O'Shaughnessy. With the exception of this space, storage at The O'Shaughnessy is somewhat limited. The O'Shaughnessy staffs and crew will attempt to work with you on your storage needs for empty road boxes, etc. Please contact the [Production Manager](#) for more details or special arrangements (651.690.6702).

Carpentry Notes

Please note that when making changes to the repertory plot or hang of The O'Shaughnessy that the cost of restoration of the repertory plot will be charged to the presenter.

- Operating Gallery and Pin Rail at approximately 20'-0" (6.1m) over stage left deck.
- Line sets work at Operating Gallery level (Main Drapery operates from the deck D.S.L.) only.

Lighting

Power

(2) 120/208V; 3Ø, 400A/leg power services down stage left proscenium wall.

(1) 120/208V; 3Ø, 60 Amp 1 phase power service USL (ground and neutral are the same)

All stage lighting circuits are 20 Amps

2 sets of Cam-Lok connectors & one set of approximately 25' tails provided for power tie ins. Neutrals Reversed.

Dimmers

384 2.4Kw ETC Sensor Dimmers w/ CEM3:

- Dimmers 1-241 are hard wired to original circuits in front of house and over the stage.
- Dimmers 242-337 are available for multi circuit cables DSL.
- Dimmers 338-344 are for the orchestra shell.
- Dimmers 345-356 are for houselights.
- Dimmers 357-384 are for future expansion of the control system.
- All dimmers are normally working properly.

Control

ETC Eos or Ion Consoles. Control consoles in lighting control booth located at rear of main floor rear to the SL of the house centerline. There is DMX-Net or DMX nodes available in the Izenour ceiling, tormentors and box booms stage left and stage right, as well as in the upstage left and downstage floor pocket locations. Separate house light control is available from control booth, backstage via ETC Unison system or light board. Two iRFR devices available for focus. Designer and Stage Manager monitors available as lighting remote console with keyboard control only (normally disabled for performances).

Circuits (dimmers)

The O'Shaughnessy is a dimmer per circuit house.

- House connectors are 20A twist-lock ground out (old style) except dimmer breakout panel DSL for dimmers #242-337.
- All multi-circuit cables used in repertory plot are 2pin & ground (stage plug) at break in and twist-lock old style at the breakout.
- Overhead on-stage circuits are in hard wired drop boxes and multi-circuit cables. Except 1A & 1B electric, this electric has 40 circuits hard wired to dimmers and 1 multi circuit cable added for repertory. One spare multi circuit cable is available as spare circuits
- 36 circuits each on 2nd and 3rd Electrics. These are a combination of drop boxes and multi circuit cables
- The 4th electric (Cyc) has 18 circuits.
- 1st Catwalk has 24 circuits hardwired.
- 2nd Catwalk has 24 circuits hardwired.
- The Balcony Rail has 15 circuits hardwired.
- Each Box Boom position (1 each side of house) has 8 circuits hardwired.
- Each Tormentor position (1 each side of stage) has 8 circuits hardwired and two hot circuits.
- The Orchestra pit has 4 circuits (2 left & 2 right).
- There are 12 circuits on each side of the stage in floor pockets (3 pockets of 4 each) as well as two hot circuits in each pocket.
- There are 12 circuits in the upstage section of the floor (3 pockets of 4 each) as well as one hot circuit in each pocket.
- There are 2 circuits in the basement.
- There are 3 hardwired circuits in the Ante Proscenium. 1 six circuits multi cable as well (with 2 spare circuits in rep).

Circuit (dimmer) chart

[\(See Attachments for details\)](#)

Front of House Positions

These measurements are approximate. They are taken from the position to approximately 3'-0" (1m) upstage of the plaster line. ([see Attachments for Side Elevation](#))

- o Balcony rail is a 48'-0" (14.63m) throw at 20°
- o 2nd Catwalk is a 51'-0" (15.54m) throw at 26° with ceiling down.
- o 2nd Catwalk is a 65'-0" (19.81m) throw at 45° with ceiling up.
- o 1st Catwalk is a 41'-0" (12.5m) throw at 45° with ceiling down.
- o 1st Catwalk is a 49'-0" (14.9m) throw at 53° with ceiling up.
- o The Box Booms are a 35'-0" (10.7m) throw at 33°.

Equipment Inventory

Note: There are twelve spare Source4 lens tubes in stock (2 each @ 36°, 6 each @ 26° & 4 each @ 19°)

Front of House Inventory:

Quantity	Fixture Type (Model #) @ wattage	Color Frame Size	# /Spares after Rep
2	ETC Source4 5° (ETC 405)@575w	14"x14" (35cmx35cm)	0
8	ETC Source4 10° (ETC 410)@575w	12"x12" (30.5cmx30.5cm)	0
34	ETC Source4 19° (ETC 419)@575w	6¼"x6¼" (15.9cmx15.9cm)	0

Stage Inventory:

48	ETC Source4 26° (ETC 426)@575w	6¼"x6¼" (15.9cmx15.9cm)	1
80	ETC Source4 36° (ETC 436)@575w	6¼"x6¼" (15.9cmx15.9cm)	8
13	ETC Source4 50° (ETC 450)@575w	6¼"x6¼" (15.9cmx15.9cm)	5
78	ETC Source4 PAR (S4PAR)@575w	7½"x7½" (19cmx19cm)	3
12	ETC Source4 PARnel (PARnel)@750w	7½"x7½" (19cmx19cm)	0
4	Altman 6x9 ERS (360Q) @575	7½"x7½" (19cmx19cm)	0
18	ETC Source 4 LED Series 2 Lustr	w/ Cyc Adapter	0
41	Par 64 @1kW (Miscellaneous Bottles)	10"x10" (25.4cmx25.4cm)	39
8	Altman SkyCyc (3 Circuit) @1kW each	15½"x16" (39.4cmx40cm)	8

All Source4 fixtures (except ETC PARnels which use HPL750 lamp @750 w and and LED Cyc Units) use HPL575-X lamps @ 575 w each. All use twist-lock ground out connectors. All ETC ERS units accept drop in iris units and accept template holders.

Lighting Hardware:

Item	In Stock	In Rep Plot	Spares
6 ¼" x 6 ¼" top hats	10	0	10
6 ¼" x 6 ¼" half top hats	18	16	2
7 ½" x 7 ½" top hats	12	7	5
7 ½" x 7 ½" half top hats	19	17	2
7 ½" x 7 ½" short top hats	25	25	0
12' boom pipe	8	6	2
20' boom pipe	5	3	2
8' – 9' 6" boom pipe	2	0	2
Weighted boom bases	10	6	4
Rover Boom Bases	2	0	2
Side arms (total):	36	16	20
12" Single Tee:	15	8	7
18" Double Tee:	21	8	13
10" barn doors	4	2	2
7 ½" Barn Doors	8	6	2
Donuts	20	8	12
Drop in Iris	6	2	4
Pattern Holders (A/B)	44	10	36

All repertory plot color in cardboard frames, metal frames available for show color.

Followspots:

(2) Strong Super Trouper (Xenon). Not removable. Rear balcony 1 each left & right of center.

(2) Booths with a maximum of (1) spot per booth.

Color size is 9" (22.86 cm) round.

120 ft. throw to proscenium plaster line.

Followspot booths each have (1) 30 Amp single-phase

power service.

(SCU Theater Department) for rental spots of a smaller size.

Cable Inventory (spares after repertory plot):

Twist Lock (Old Style):

- (10) 3' jumpers
- (6) 5' jumpers
- (26) 10' jumpers
- (19) 25' jumpers
- (11) 50' jumpers
- (13) Custom three-fers
- (35) Twofers

2 Pin & Ground (Stage Plug):

- (4) 20' stage plug cable
- (4) 25' stage plug cable
- (34) Twofers

Adapters:

- (17) Twist lock (female ground out) to stage plug (male)
- (19) Stage plug (female) to twist lock (male ground out)
- (18) U - ground to male twist adapters
- (11) U- Ground male to female twist lock

Miscellaneous:

± 3000' of multi-circuit cable (most used in repertory plot dimmer distribution). ([See Multi-cable Inventory](#))

(30) Orchestra stand lights

(7) Orchestra outlet garlands with various connectors.

Various U-ground cables and adapters

Film, Slide, Video and Projection Equipment

(1) EIKI LC-W5 WXGA Projector (6000 lumen) with a W02Z (2.06~2.67" [52.2~6.67mm) f2.553~2.95) power zoom lens

(2) Kodak® Carousel™ slide projectors with a limited selection of lenses.

(1) computer with Arkaos Media Master Pro software for projected media controlled via the lighting console.

There is a projection booth available main floor rear approximately 68' (20.75m) from the plaster line.

Archival Video recording on DVD is available for a minimal charge.

Please contact the [Production Manager](#) for more details.

SCU Theater Department Equipment:

THIS EQUIPMENT MAY BE AVAILABLE BY SPECIAL REQUEST AT ADDITIONAL CHARGE:

(3) Short throw follow spots (1 - Ultra Arc & 2- Altman Comets).

Additional Source 4 ERS and Altman 6" Fresnels may be available for rent depending on departmental production needs.

Lighting Notes

- Please note that when making changes to the repertory plot or hang of The O'Shaughnessy that the cost of restoration of the repertory plot will be charged to the renter.
- There is a portable design table that may be set up in the house and used as a designer or stage manager remote display of the Eos/Ion consoles. There are monitors installed back stage left for stage manager as well.
- DMX 512 is available on each side of the stage, in each side floor pocket, in the box booms, ceiling, and in the Tormentor lighting positions.

Sound

Power

(2) 120/208V; 3Ø, 400A/leg power services down stage left proscenium wall. (shared with lighting)

(1) 120/208V; 3Ø, 60 Amp 1 phase power service USL (ground and neutral are the shared with above)

All stage lighting circuits are 20 Amps

(2) Sets of Cam-Lok connectors & one set of approximately 25' tails provided for power tie ins. Ground & neutrals Cam-Loks reversed

Wiring

(See attachments for plot)

Control Locations

- House sound booth/mix position located on the main floor, just stage right of centerline of house. There is an amp rack stage right above the stage for the house system. Road board mix position is in seats directly in front of sound booth, with no permanent snake run to house mix position. These removable seats must be held by prior arrangement with the ticket office.
- Position and booth are located under a balcony, but the balcony front does not obstruct sound (see [Side Elevation](#)). Approximately 150' (45.72m) of snake is needed from stage to house mix position.

Assistive Listening system

Assistive listening units are available (10 units, Listen Technologies system).

Monitor/Paging System

The house monitor system feeds dressing rooms, the Green Room, and through separate busses, the technical control booths and the lobby. The system can carry program and /or pages from backstage or the booths.

Production Communications

(1) Clear-Com MS-200 Main Station (base station located in lighting control booth) - 2 channels

(10) Clear-Com RS-601 belt packs

(8) Clear-Com CC-95 single muff headsets

(2) Clear-Com CC-260 double muff headsets

(2) Clear-Com HS-6 handset

(3) Clear-Com KB-112 Speaker Station

(1) Telex lightweight headset (at lighting control position)

(1) Clear-Com CZ-DX410 2 Channel wireless intercom system with four wireless beltpacks.

Intercom stations at control and most crew locations.

Equipment inventory

Mixing Console

(1) Yamaha PM5D-RH

- 48 mono inputs
- 4 stereo inputs
- 24 mix busses
- 8 DCA s
- Eight independent SPX2000-class multi- effect processors that can be patched into any of the console's input, stereo, mix, or matrix channels, offering a comprehensive range of reverb, delay, modulation, and combination effects.
- Twelve 31-band graphic equalizers for output processing
- Stereo A & B busses

Speakers

Fixed Speakers:

BALCONY:

- (2) d&b Q1 loudspeaker Line arrays (1x4 cabinets left and 1x4cabinets right)
- (3) d&b Q1-Subs in a cardioid configuration
- (1) d&b Cl6 loudspeaker center front fill
- (3) d&b D12 amplifiers
- (3) d&b E-PAC amplifiers.

Portable Speakers:

MAIN FLOOR:

- o (4) d&b Q7 loudspeakers (two cabinets left and two cabinets right)
- o (2) d&b B2 Subwoofers (one left and one right)
- o (2) d&b D12 amplifiers

FRONT FILL:

- o (4) d&b E3 speakers
- o (1) d&b E-PAC amplifier.

SIDE FILL (for dance events):

- o (6) d&b E3 speakers
- o (2) d&b E-PAC amplifier

FOLDBACK SPEAKERS:

- o (8) EV Eliminator M two-way monitor wedges.
- o (4) Martin Audio EM15
- o (2) Bag End TA-6000-R;.

Playback:

- o (1) Denon DN-2500F dual drive player w/ remote control unit RC-44, direct track access, pitch and tempo controls
- o (1) Denon DNC635 Studio CD Player
- o (1) TEAC High Definition DVD/CD recorder
- o (1) Qlab stereo playback system with Mac Mini w/ Focusrite Scarlett

Outboard gear:

- o (2) Ashly Protea II Equalizers (8 channels with wired remote)
- o (1) Roland RSP 550 stereo signal effects processor.
- o (1) Yamaha REV500 Digital Stereo Reverb
- o (1) Lexicon PCM-41 delay.

Microphones:

(6) Rode NT5 small-diaphragm cardioid-condenser microphones (three matched pairs).

(1) DPA d:vote™ CORE 4099 V10 - Classic Touring Kit with:

(10) d:vote™ CORE 4099 mics with:

(2) Clips for Bass

- (2) Clips for Cello
- (2) Clamp Mounts
- (4) Clips for Guitar
- (2) Clips for Piano
- (3) Stand Mount

- (2) Clips for Sax
- (2) Universal Clips
- (8) Clips for Violin
- (10) Extension Cables
- (10) Adapter for XLR

(10) DPA Microdot to Shure TA4 Connector for Shure wireless

Info: [DPA 4099 Mounting clip information](#)

(2) Applied Microphone Technology M-40 condenser piano microphones

(12) Shure SM58 (dynamic cardioid)

(3) Shure SM57 (dynamic cardioid)

(6) Crown PCC-160 (half-super-cardioid condenser) generally used as floor boundary microphones

(6) Audix M1290 cardioid microphones with 50" Micro Boom or non-swivel shock mounts.

(6) Audix OM-3 Hyper-cardioid vocal microphones

(6) Audix I-5 cardioid dynamic instrument microphone

(1) Audix DP-5a percussion microphone kit includes:

- (1) I-5 snare
- (2) D-2 tom
- (1) D-4 floor tom
- (1) D-6 kick drum
- (4) D-vice (gooseneck clips)

(1) Shure VP88 (forward cardioid mid capsule, w/perpendicular bi-directional side capsule, w/stereo matrix)

(1) Electro-Voice N/D 868 (dynamic cardioid) Bass Drum Microphone

(1) Audio-Technica AT4050/CM5 (multiple pattern capacitor microphone)

(1) Audio-Technica 3032 omni-directional condenser microphone

- (2) Audio-Technica AT 815B Line + gradient condenser microphone, 16.5" long (battery/phantom)
- (2) AKG C568 EB condenser (short shotgun)
- (2) ES935 lectern microphones with a choice of cardioid or hyper-cardioid elements.
- (2) Audio-Technica AT 857AML (condenser cardioid lectern microphones)
- (1) Shure Beta 87A supercardioid condenser vocal microphone
- (1) AKG C451E with CK-1 capsule (condenser cardioid)

Wireless:

- (4) Shure ULDX4Q Quad channel wireless receivers (16 total Channels) G50 Band with:
 - (8) Shure ULDXD2/B58 Beta 58 handheld transmitters (G50 Band)
 - (12) Shure ULDX1 Wireless Bodypack Transmitters (G50 Band) with these source options:
 - (12) Countryman E6IOW Headsets (7 Beige, 4 Tan, 1 Cocoa)
 - (4) DPA d:screet CORE 4060 Lavaliers (Black)
 - (10) DPA d:vote CORE 4099 V10 (see details above)
 - (2) Shure to 1/4" to TA4 Adapter Cables
 - (1) XLR to TA4 Adapter Cable

Cables, Stands, etc.

- (1) Canare 100' 16 input sub snake.
- (1) 48 input, Stage box (located in DSR) with 48 channel passive split and 25' fan-out to rental monitor system (no separate monitor mix system available in house).
- (5) Rapco 12 channel sub snake boxes with (1) 125', (2) 50', (3) 25' multi pin extension cables.
- (3) Six Channel 25' sub snakes
- (2) BSS AR-133 active direct box
- (2) Radial passive direct box
- (2) DOD Stagehand 265 passive direct boxes.
- (2) Rapco DB100 passive direct boxes.
- (1) Radial JPC direct box for computer input

Miscellaneous stands, booms, etc. including (list not complete please ask for current inventory):

- (5) Atlas brand 10" base short stands
- (4) Onstage brand "tri-foot" short stands
- (1) Onstage brand tripod short stand
- (4) Atlas brand 6" base desk stand

Props

Orchestra Pit

The orchestra pit is a trapezoidal shape and extends under the edge of the stage when the elevator is at pit level. The hydraulic elevator stops at 4 levels (basement, orchestra pit, house floor, and stage). It may be operated from the Stage Manager's console (stage left) or with a pickle from the pit itself. The downstage edge of the pit is 19'-10" (6.04m) wide and the upstage edge is 40'-6" (12.34m). At the widest the pit is 48'-0" (14.63m). ([See Attachments for floor plan.](#)) Movement time from basement to stage level is approximately 90 seconds.

Music Staging

(132) Chairs (approximately 75 of these for pit seating, if used)

- (92) Chairs, orange fabric and chrome frames. InterRoyal® with custom backs.
- (46) Chairs, orange fabric and brown frames. Steelcase model 1279.
- (83) Wenger® Orchestra Chairs (black fabric with black frames).
- (6) Wenger® Cello Chairs (black fabric with black frames).
- (3) Wenger® Symphony Chairs (black fabric with black frames).
- (2) Wenger® conductor/bass player's stools (black fabric with black frames).
- (17) Music stands.
- (30) Orchestra stand lights
- (7) Orchestra outlet garlands with various connectors.
- (3) Conductor's podiums (2 rehearsal or pit, 1 for performances)
- (1) Conductor's music stand

Please contact the [Production Manager](#) for more information on inventory and availability.

Portable Orchestra Shell Units:

In addition to the house permanent collapsible shell, The O'Shaughnessy has a smaller, portable Wenger® orchestral shell. It consists of up to (8) units.

Portable Orchestral Platforms:

4'-0"x 8'-0" Wenger® Platforms are available in the following heights:

- (8) @ 8" (1.693 cm)
- (4) @ 16" (3.386 cm)
- (4) @ 24" (5.08 cm)
- (6) @ 32" (6.773 cm)

Portable Choral Risers:

(6) 3 three step choral risers are available. Each step has a rise of 8" (1.693 cm). They are covered with gray carpet. The standard configuration is in a curve. The sections levels can be reversed to create various configurations at an additional charge.

Dance Floors

(1) Black Harlequin® Studio™ dance floor approximately 48' (14.630 m) wide x 30' (9.14 m) deep in six panels.
(1) Black Rosco Arabesque® tap floor approximately 65' (19.812 m) wide x 32' (9.753 m) deep in five panels.
This floor is suitable for tap & percussive dance. It may be required for some types of events to protect the stage floor.

Floor tapers are available. Black gaffer's or vinyl floor tapes are available as options for the floors.

Please note there is an additional charge for dance floor use. Please contact the [Production Manager](#) for more details

Speaker's Lecterns

- (1) Large lectern with side areas for notes and water glasses and a shelf inside
 - (1) Small matching lectern with shelf inside
- Water tables, etc. available on request

Miscellaneous

- (3) Short black stools
 - (4) Tall black stools
 - (4) oak wood stained short stools
- Miscellaneous folding tables
Oriental carpets

Quick Change Booths

Some pole and drape are available for quick-change areas. Please contact the [Production Manager](#) for availability.

Wardrobe

Dressing rooms

(2) Small (1 or 2 person) dressing rooms on stage level at rear of stage house on stage right. Each room with separate sink and makeup area but share a toilet.

(2) Large "chorus" style dressing rooms on the lower level. There is a shared makeup area with 12 mirrors. Separate dressing rooms with makeup mirrors for men and women. Each dressing area has toilets, sinks and showers. Wardrobe racks in each area.

Audio monitors of the stage in each room. Video in main makeup area only.

Wardrobe Area

Wardrobe area for the O'Shaughnessy is not available without special permission of the SCU Theater department costumer. The costume shop is located on the lower level next to "chorus" dressing area. The following equipment is available through The O'Shaughnessy:

- o (3) iron (noncommercial)
- o (2) ironing boards
- o (1) Jiffy™ Steamer
- o (4) Small portable chrome wardrobe racks.
- o (6) large (6'-7' [2m] in length) wardrobe racks (includes all in lower level dressing rooms)

There are no laundry facilities available without permission from the SCU theater department costumer. No laundry supplies will be provided. Laundry is located in the SCU costume shop.

Laundry & Dry Cleaning

Grand Laundromat (self-serve) 1700 Grand Avenue 651.646.1252

Red Robin Cleaners 2015 Ford Parkway 651.690.2388

Quick Change Booths

Some pole and drape are available for quick-change areas. Please contact the [Production Manager](#) for availability.

Wardrobe Notes

Wardrobe transfer to pit level is via forestage elevator (Orchestra pit).

- The pit does not go to dressing room level.
- Wardrobe may need to be carried up to dressing room level (6 steps).
- This basement storage area may be available for wardrobe as well.

Please contact the [Production Manager](#) for more information.

Attachments

Repertory Fly Rail Schedule

LS#	Dist. Fr. PL	Dist. Fr. Prev. L.S.	MAX ARBOR	PIPE LENGTH	GOODS\UNIT	Notes
SL Tab					SL Lighting Tab	Pin Rail Operation Only
0	1' 0"		1200	63'	Valance	
1	1' 6"	6"	1200	63'	Main Drape	
2	2' 0"	6"	1200	63'	Plastic Cyc	
3	2' 6"	6"	1200	63'	#1 LEGS	
Winch	3' 8"	1' 2"	1200		Electric Bridge 1A - 1B	Electric Winch - SM Panel Control
4	5' 2"	1' 6"	1200	63'		
5	5' 8"	6"	1200	63'		
6	6' 2"	6"	1200	63'		
7	6' 8"	6"	1200	63'		
8	7' 2"	6"	1200	63'	#2 BORDER	
9	7' 8"	6"	1200	63'	#2 LEGS	
10	8' 6"	10"	1200	63'		
11	9' 0"	6"	1200	63'		
12	9' 6"	6"	1200	63'		
13	10' 2"	8"	1200	63'	#2 ELECTRIC	
14	11' 0"	10"	1200	63'		
15	11' 6"	6"	1200	63'		
16	12' 0"	6"	1200	63'		
17	12' 6"	6"	1200	63'		
18	13' 0"	6"	1200	63'		
19	13' 6"	6"	1200	63'	#3 BORDER	
20	14' 0"	6"	1200	63'	#3 LEG	
21	14' 6"	6"	1200	63'		
22	15'	6"	1200	63'		
23	15' 6"	6"	1200	63'		
24	16'	6"	1200	63'		
25	16' 6"	6"	1200	63'		
26	17'	6"	1200	63'		
27	17' 10"	10"	1200	63'	3RD ELECTRIC	
28	18' 8"	10"	1200	63'		
29	19' 2"	6"	1200	63'	#4 BORDER	
30	19' 8"	8"	1200	63'	#4 LEGS	
31	20' 2"	8"	1200	63'		
32	21' 2"	8"	1200	63'	4E Cyc Lights	
33	22' 6"	1' 4"	1200	63'		
34	23' 0"	6"	1200	63'	BLACK TRAVELER	
35	23' 4.5"	6"	1200	63'	Black Sharkstooth	
36	23' 9"	6"	1200	63'	Plastic Cyc	Rosco Twin White
37	24' 6"	6"	1200	63'	Bounce	Muslin
SR Tab					SR Lighting Tab	Pin Rail Operation Only

NOTES:1. The black or white sharkstooth scrims weighs 6 bricks (120 pounds) when piped.
 2. The traveler track on line set 33 weighs 7 ½ bricks (225 lbs.) Rigging system was renovated Summer 2013

Blank Fly Rail Schedule

LS#	Dist Fr PL	Dist Fr Prev LS	MAX ARBOR	PIPE LENGTH	GOODS\UNIT	Notes
SL Tab					SL Lighting Tab	Pin Rail Only
0	1' 0"		1200	63'	VALANCE w/pipe	
1	1' 6"	6"	1200	63'	Main Drape	
2	2' 0"	6"	1200	63'		
3	2' 6"	6"	1200	63'		
Winch	3' 8"	1' 2"	1200		Electric Bridge 1A - 1B	Electric Winch - SM Panel Control
4	5' 2"	1' 6"	1200	63'		
5	5' 8"	6"	1200	63'		
6	6' 2"	6"	1200	63'		
7	6' 8"	6"	1200	63'		
8	7' 2"	6"	1200	63'		
9	7' 8"	6"	1200	63'		
10	8' 6"	10"	1200	63'		
11	9' 0"	6"	1200	63'		
12	9' 6"	6"	1200	63'		
13	10' 2"	8"	1200	63'	2E	
14	11' 0"	10"	1200	63'		
15	11' 6"	6"	1200	63'		
16	12' 0"	6"	1200	63'		
17	12' 6"	6"	1200	63'		
18	13' 0"	6"	1200	63'		
19	13' 6"	6"	1200	63'		
20	14' 0"	6"	1200	63'		
21	14' 6"	6"	1200	63'		
22	15'	6"	1200	63'		
23	15' 6"	6"	1200	63'		
24	16'	6"	1200	63'		
25	16' 6"	6"	1200	63'		
26	17'	6"	1200	63'		
27	17' 10"	10"	1200	63'	3E	
28	18' 8"	10"	1200	63'		
29	19' 2"	6"	1200	63'		
30	19' 10"	8"	1200	63'		
31	20' 6"	8"	1200	63'		
32	21' 2"	8"	1200	63'	4E	
33	22' 6"	1' 4"	1200	63'		
34	23' 0"	6"	1200	63'	BLACK TRAVELER	
35	23' 6"	6"	1200	63'		
36	24' 0"	6"	1200	63'		
37	24' 6"	6"	1200	63'		
SR Tab					SR Lighting Tab	Pin Rail Only

NOTES:

1. The black sharktooth scrim weighs 6 bricks (120 pounds) when piped.
 2. The traveler track on line set 33 weighs 7 ½ bricks (225 lbs.)
- Rigging system was renovated Summer 2013

Dimmer/Circuit Chart

- The O'Shaughnessy is a dimmer per circuit house. House connectors are 20A twist-lock ground out (old style) except dimmer breakout panel DSL for dimmers #242-337.
- All multi-circuit cables used in rep plot are 2 pin & ground (stage plug) at break in and twist-lock old style at the breakout. Overhead circuits on-stage dimmers are in drop boxes and multi-circuit cables (except for the hard wired circuits on the 1E Bridge).
- 1st Catwalk has 24 dimmers.
- 2nd Catwalk has 24 dimmers.
- The Balcony Rail has 15 dimmers.
- Each Box Boom position (1 each side of house) has 8 dimmers.
- Each Tormentor position (1 each side of stage) has 8 dimmers and two hot circuits.
- The 1E (1A & 1B) electric bridge has 40 dimmers hard wired and in addition there are 24 dimmers added as multi circuits.
- 48 dimmers are available on each of the 2nd and 3rd Electrics.
- The 4th electric (L & E MiniStrips) has 16 dimmers.
- The Orchestra pit has 4 dimmers (2 left & 2 right).
- There are 12 dimmers on each side of the stage in floor pockets (3 pockets of 4 each) as well as two hot circuits in each pocket.
- There are 12 dimmers in the upstage section of the floor (3 pockets of 4 each) as well as two hot circuits in each pocket.
- There are 2 dimmers in the basement (normally dedicated to running lights).

Location/# of dimmers in rep	Dimmer/Circuit Numbers	Notes: (spares are after Rep Plot hang)
Orchestra Shell (8)	177-180 & 338-341	Box I
Balcony Rail (15)	227-214	8 Spare dimmers
1st Catwalk (24)	1-24	2 Spare dimmers & 6 Multi circuits ¹
2nd Catwalk (24)	25-48	4 Spare dimmers
SL Box Boom (8)	49-56	0 Spare dimmers
SR Box Boom (8)	57-64	0 Spare dimmers
SL Tormentor (9)	65-72 & 336	0 Spare dimmers & 5 Multi circuits ¹
SR Tormentor (9)	73-80 & 337	0 Spare dimmers & 5 Multi circuits ¹
Ante Proscenium (3)	342-344	0 Spare dimmers & 6 Multi circuits ¹
Electric Bridge (48)	81-120, 242-247&253	2 Spare dimmers & 12 Multi circuits ¹
2nd Electric (48)	121-136,153-172, 258-269	9 Spare dimmers (Boxes A, B, E, F, G)
3rd Electric (48)	274-285, 290-301, 306-317, & 322-333	9 Spare dimmers
4th Electric (16)	137-152	0 Spare dimmers (Box C & D)
Pit (4)	221-224	4 Spare dimmers
DSL Floor Pocket (4)	185-188	0 Spare dimmers
MSL Floor Pocket (4)	189-192	0 Spare dimmers
USL Floor Pocket (4)	193-196	0 Spare dimmers
DSR Floor Pocket (4)	197-200	0 Spare dimmers
MSR Floor Pocket (4)	201-204	0 Spare dimmers
USR Floor Pocket (4)	205-208	0 Spare dimmers
US Groundrow SL (4)	209-212	0 Spare dimmers
US Groundrow CS (4)	213-216	0 Spare dimmers
US Groundrow SR (4)	217-220	0 Spare dimmers
SR Multi (0)		6 Multi circuits ¹
US Multi (0)		6 Multi circuits ¹
Spare boxes (4 each)	Box H (173-176) & J (181-184)	
Spare Dimmers		20 Spares for Multi Circuit patching D.S.L

Notes:

¹no dimmers are assigned. (20 spare dimmers available to patch DSL – see Spare Dimmers at bottom of chart)

Multi Cable inventory

Label	Length	Rep use	Assigned Dimmers
A	80	1E- SL pipe-ends	242-247
B	95	1E Spare	None
C	105	1E Spare	None
D	130	1E- SR pipe-ends	248-253
E	90	2E- SL pipe-ends	258-263
F	145	2E- SR pipe-ends	264-269
G	100	3E- SL pipe-ends	274-279
H	100	3E	280-285
I	110	3E	290-295
J	120	3E	296-301
K	130	3E	306-311
L	140	3E	312-317
M	145	3E	322-327
N	155	3E-SR pipe-ends	328-333
O	75	To USC	None
P/U	90	To SR (w/U)	None
R	75	To Eyebrow	None
S	125	To 1st Cat	None
T	50	To Fly Rail	None
DD	150	To SR Tormentor	Cir1 patched at dimmer337

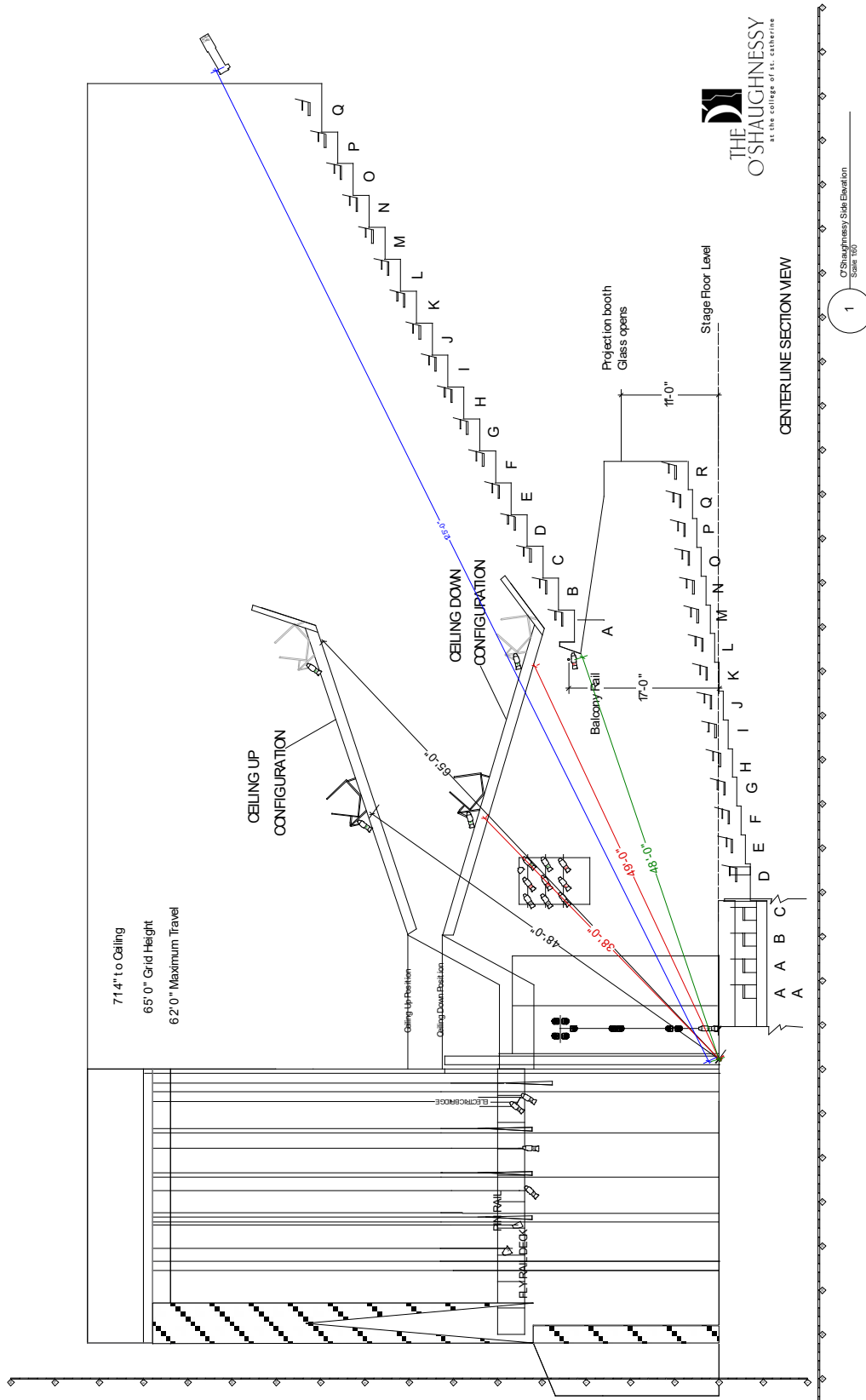
Spare multi-cable available after repertory plot

Label	Length	
Q	90	SPARE
V	25	SPARE
W	25	SPARE
X	25	SPARE
Y	50	SPARE
Z	50	SPARE
AA	50	SPARE
BB	50	SPARE
CC	150	SPARE

Non-Repertory Spare Dimmers available at breakout panel

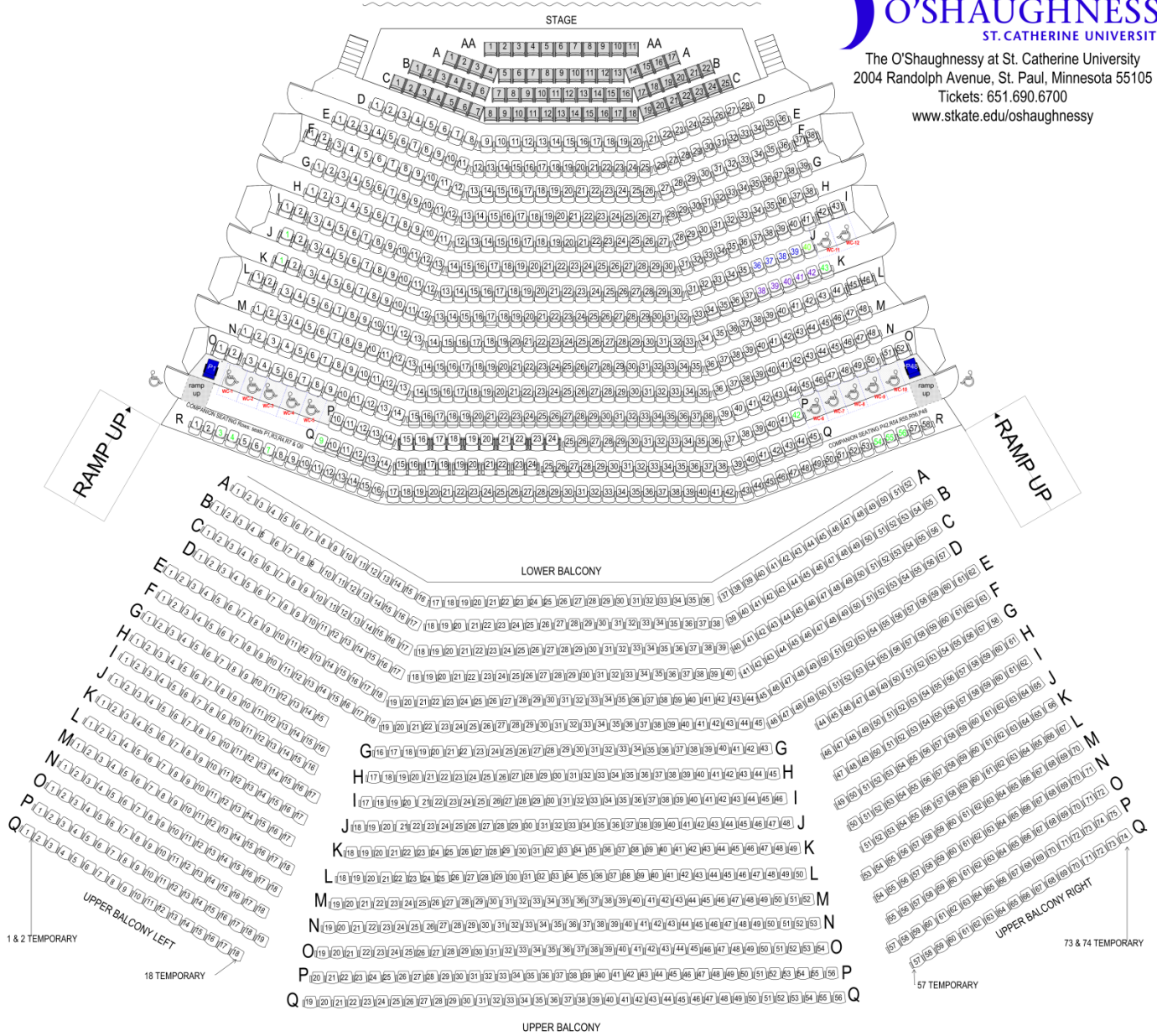
254-257
270-273
286-289
302-305
318-321
334,335

Side Elevation

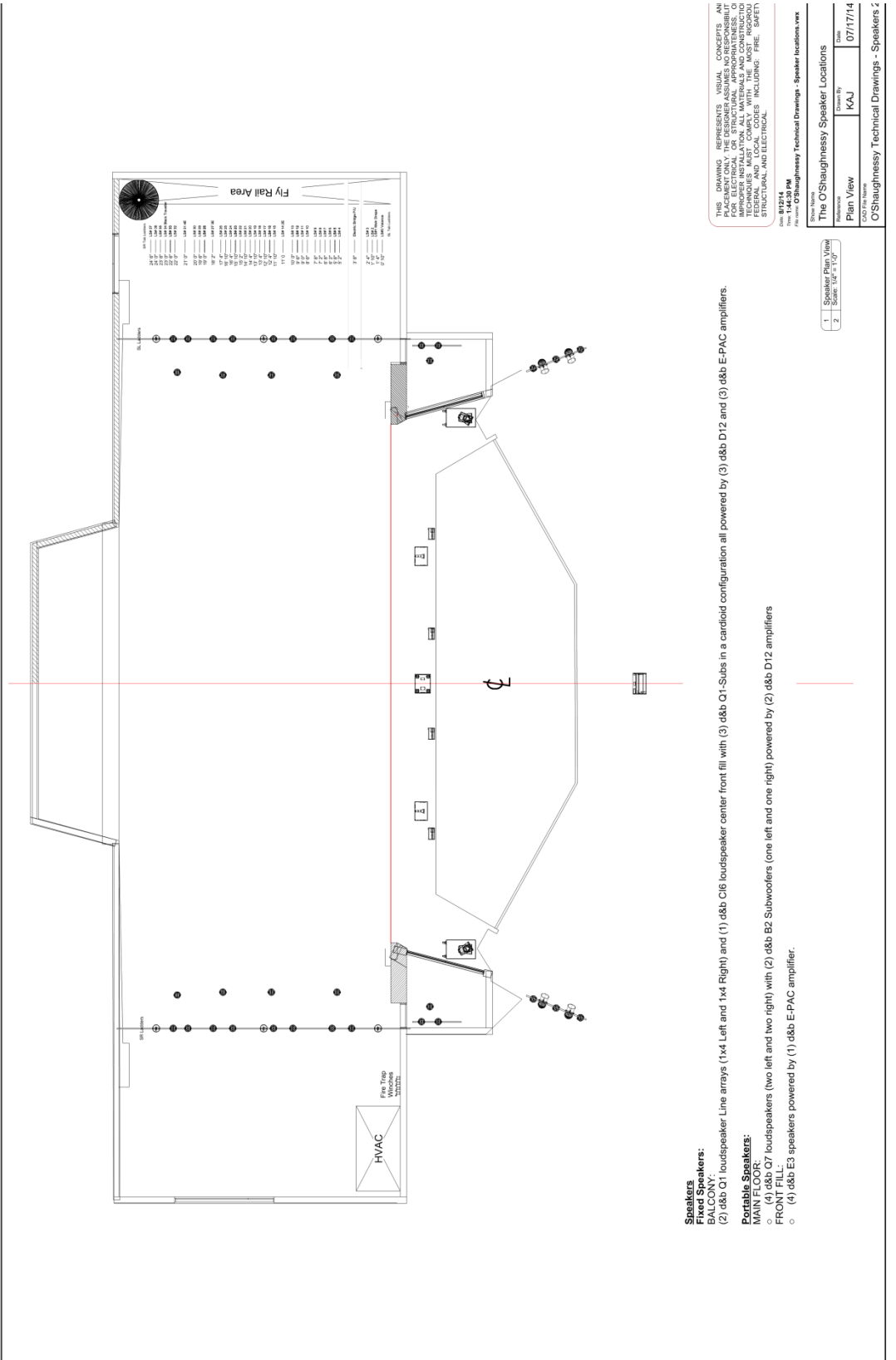


Seating Chart

The O'Shaughnessy at St. Catherine University
2004 Randolph Avenue, St. Paul, Minnesota 55105
Tickets: 651.690.6700
www.stkate.edu/oshaughnessy



Sound Layout



Maps

The O'Shaughnessy is located on the St. Paul Campus of St. Catherine University. The campus is located between Fairview and Cleveland on Randolph Avenue. As you enter the campus through Gate 3. The O'Shaughnessy is the first building on your right. The [Stage Door](#) entrance is yellow and located next to the loading dock.

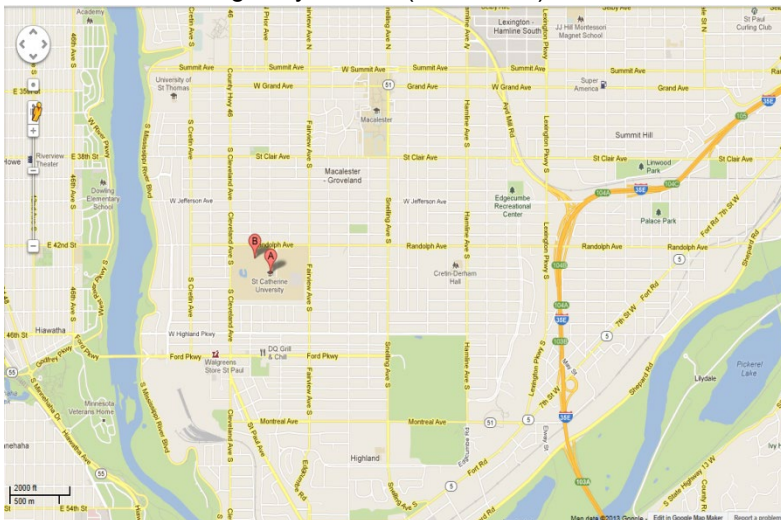
Highland Park neighborhood



From Interstate 94 East Bound:
 Take CRETIN – VANDALIA exit.
 Turn Right on CRETIN AVENUE south 2.01 mi.
 Turn Left on RANDOLPH AVENUE east 0.37 mi.
 Turn Right just past PRIOR AVENUE south at Gate 3.
 From West Bound I 94:
 Take SNELLING AVENUE Exit.
 Turn Left on SNELLING AVENUE south 1.69 mi.
 Turn Right on RANDOLPH AVENUE west 0.86 mi.
 Just past South HOWELL STREET Turn left go south at Gate 3.

From I 35 E:
 Take RANDOLPH AVENUE Exit.
 Turn on RANDOLPH AVENUE Go west 2 mi.
 Just Past S. HOWELL ST Turn left In Gate 3.

From I 494 or Highway 62 (Crosstown) or the Minneapolis - St. Paul Airport:
 Take Highway 5 north (to St. Paul).



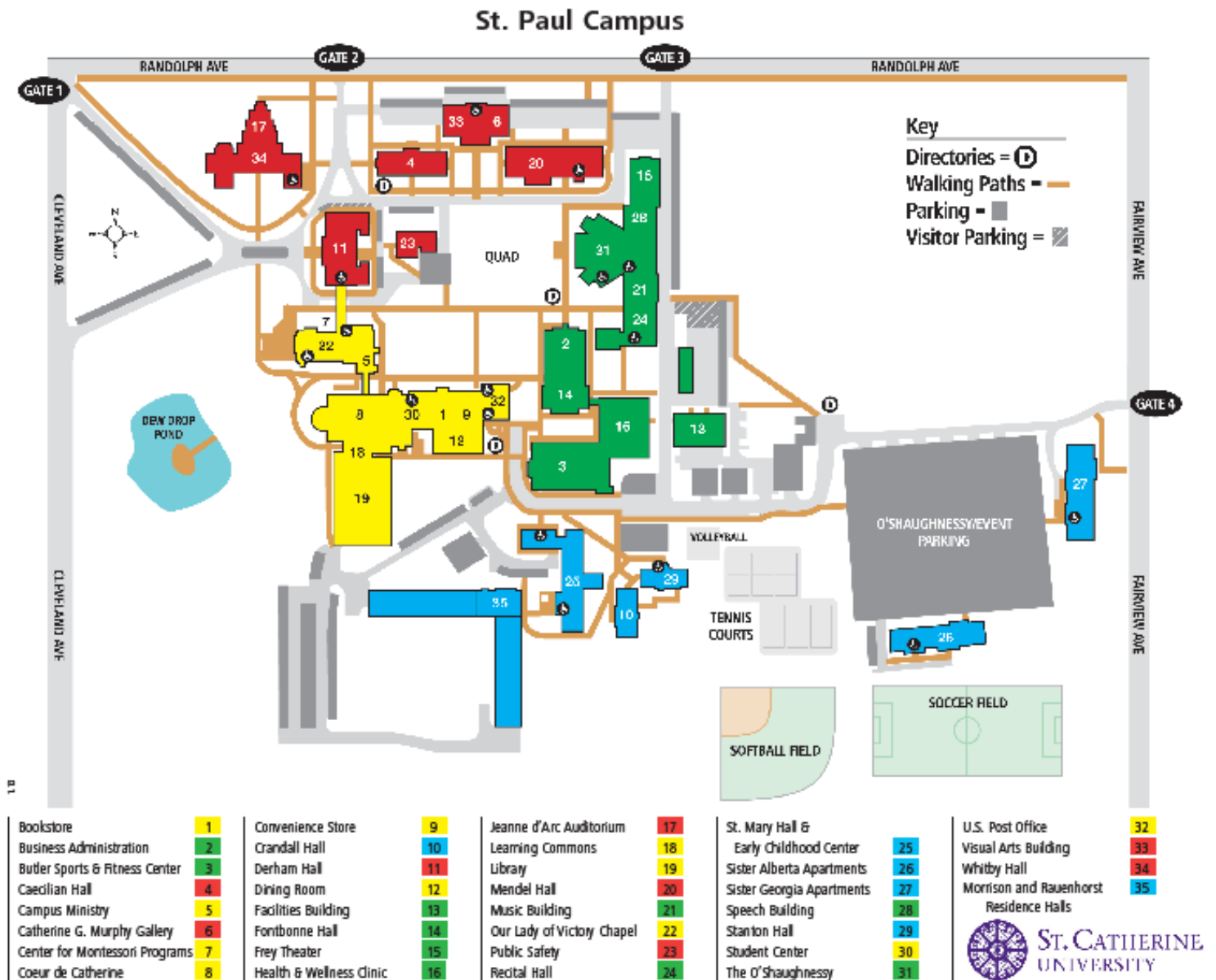
Go Straight on State highway 5 northeast 0.27 mi.
 Take EDGCUMBE/SHEPARD RD Exit.
 Take Left fork on EDGCUMBE ROAD
 Follow EDGCUMBE ROAD
 Go Straight on SOUTH FAIRVIEW AVENUE north 1.15 mi.
 Turn Left on RANDOLPH AVENUE west 0.38 mi.
 Just past S. HOWELL STREET turn left go south in Gate 3.
 Bus and bus parking information for educational performances available [here](#)

St. Catherine University Campus Map

For more information click [here](#).

General campus parking information [here](#).

Bus and bus parking information for educational performances available [here](#).



Sightlines

Note: The production photos on these two pages were taken during a rehearsal of *The Golden Bough*, February 2002. They are meant as a reference for approximate sightlines from various locations in the auditorium seating.



Main Floor View Left



Main Floor View CenterMain



Floor View Right (Approximates disability seating sightlines)



Lower Balcony View Left



Lower Balcony View Center



Lower Balcony View Right



Upper Balcony View Right

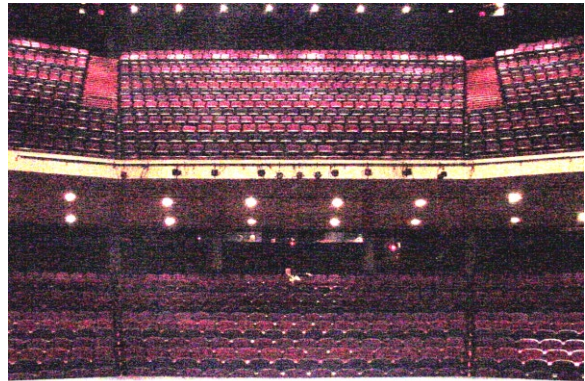


Upper Balcony View Center



Upper Balcony View Left

Interior and Exterior Views



View from Stage (Ceiling Up)



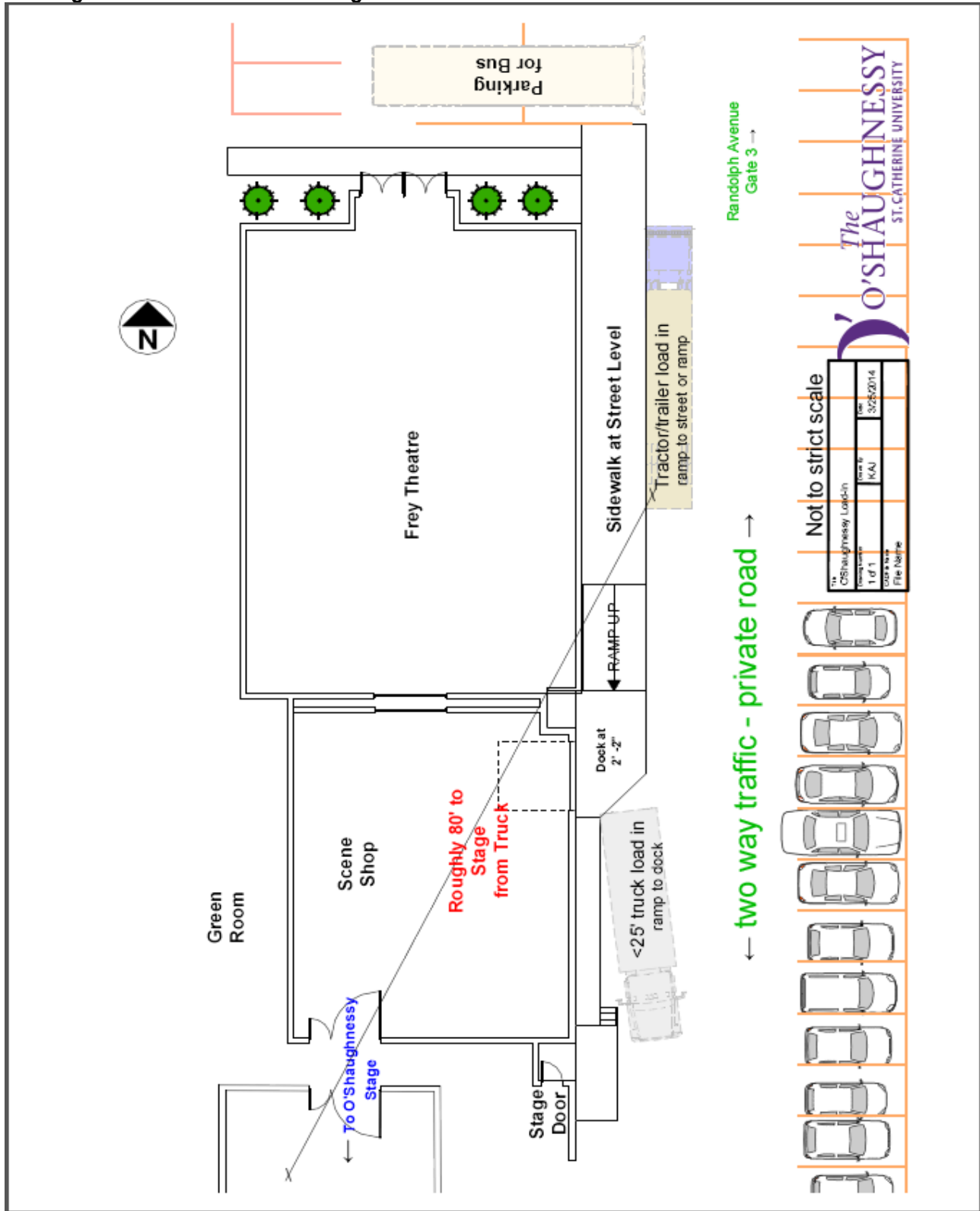
Front Facade (main entrance)

Stage Door

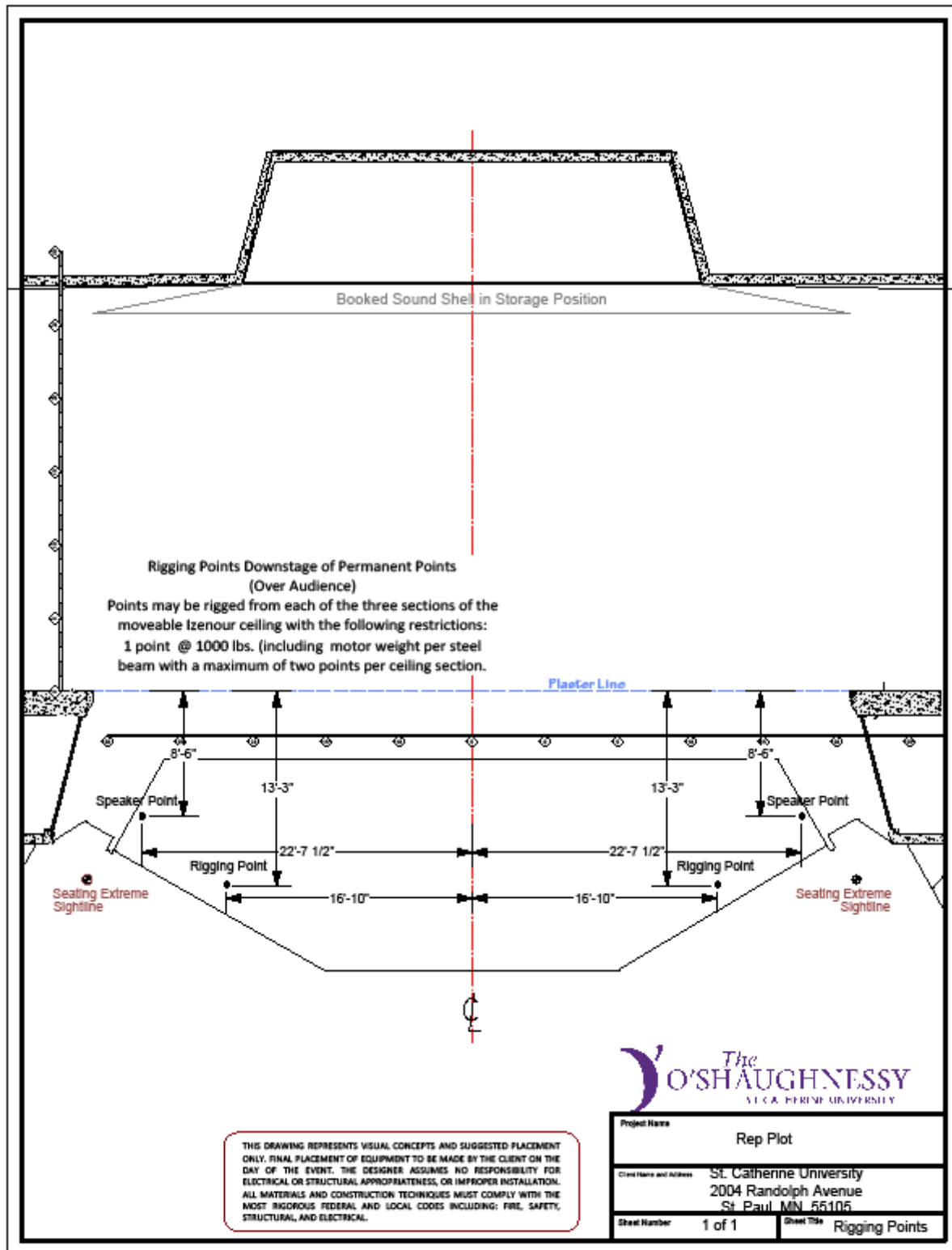


Rear Facade (Stage Door/Loading Dock)

Loading Dock and Artist Bus Parking



Rigging Points



The O'SHAUGHNESSY
ST. CATHERINE UNIVERSITY

Project Name	Rep Plot
Client Name and Address	St. Catherine University 2004 Randolph Avenue St. Paul, MN 55105
Sheet Number	1 of 1
Sheet Title	Rigging Points