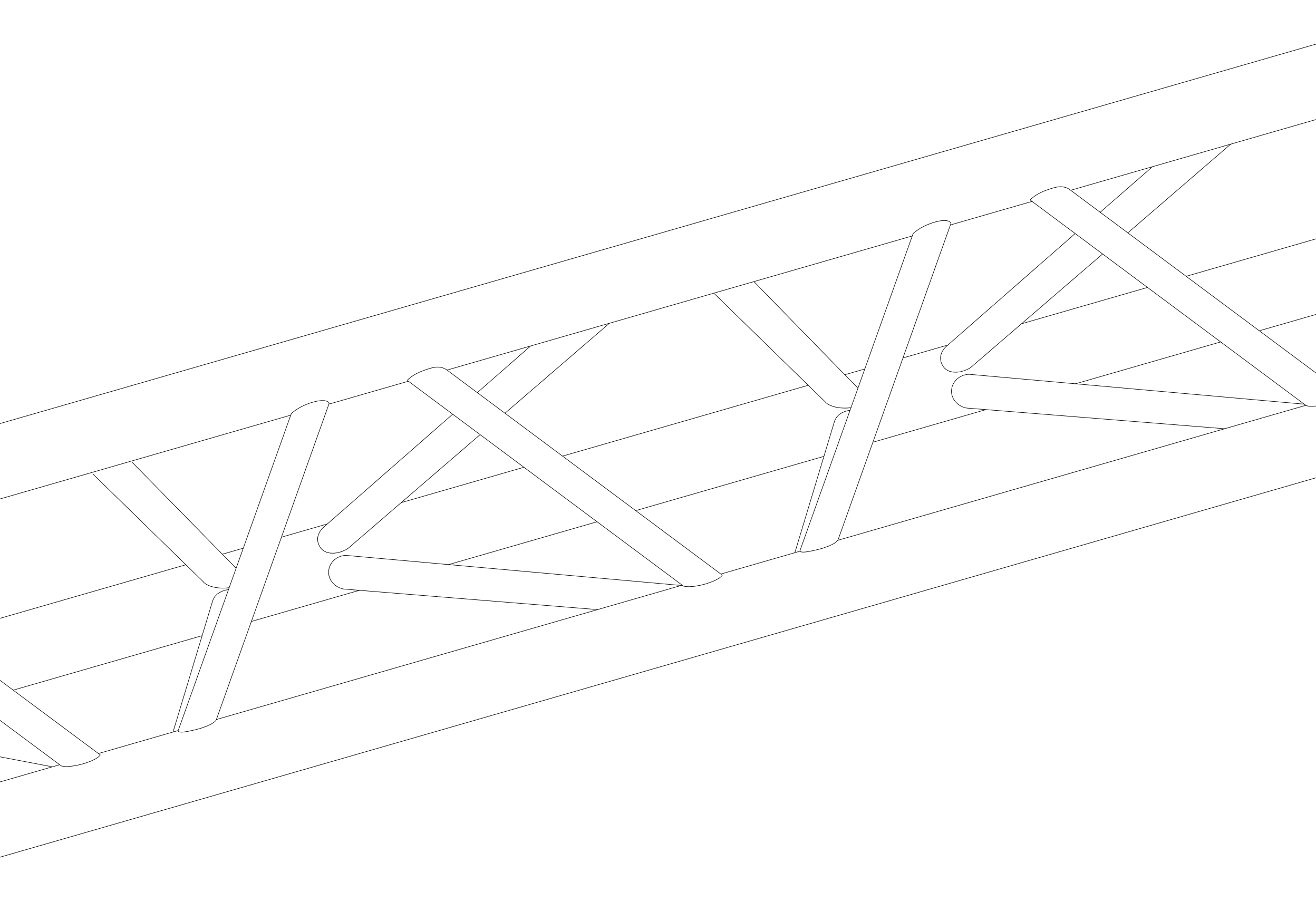
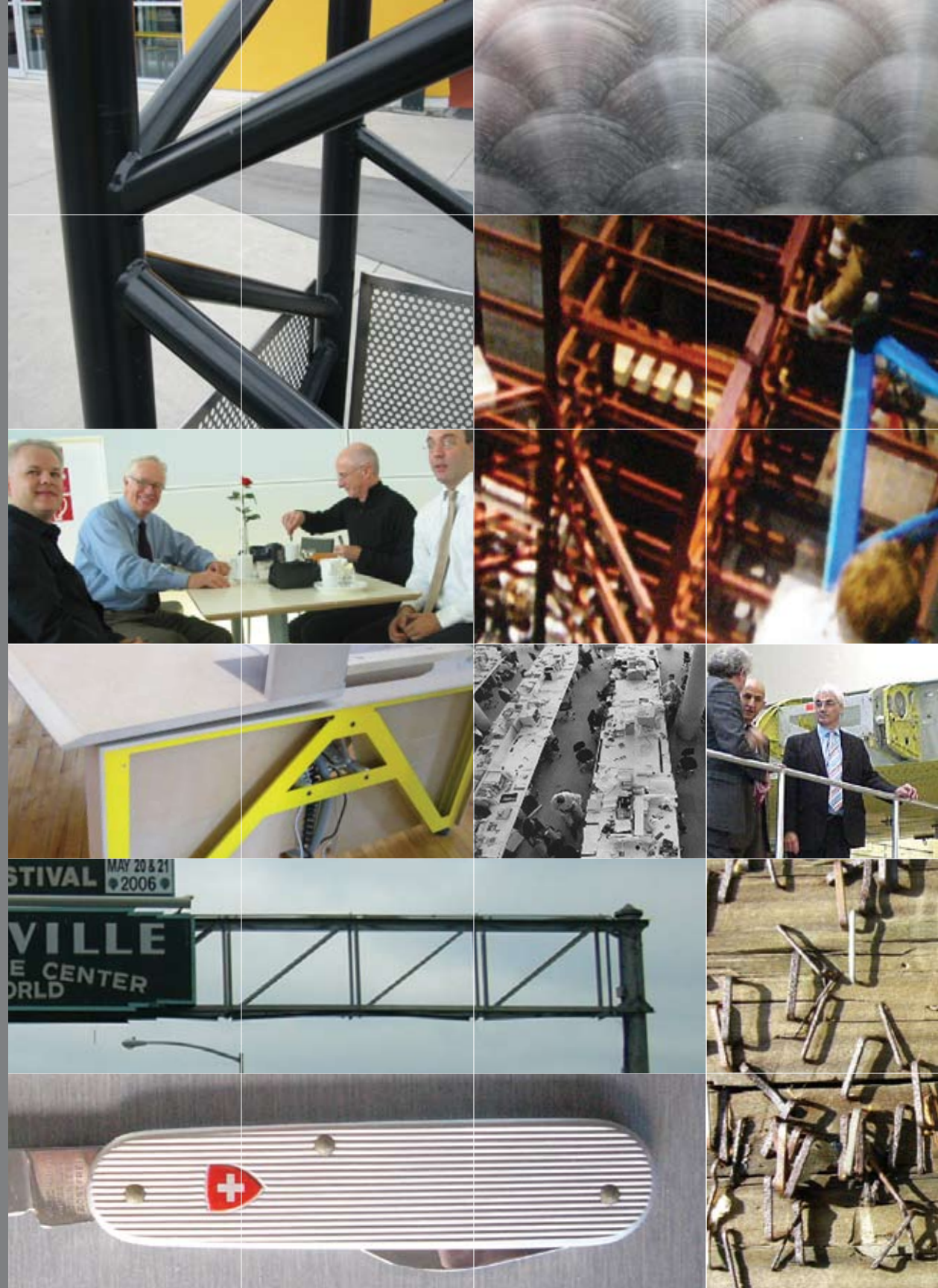


Teknion

TeknionMarketplace







designer

Marketplace is the creation of Carl Gustav Magnusson, an industrial designer well known to the international design profession and office furniture industry. He studied architecture in Sweden, worked for Ray and Charles Eames in California, and for some 30 years was employed by a major contract furniture company in Europe and the U.S. as Director of Design. He brings an extraordinary knowledge of the processes of design, development, manufacturing and marketing to the design of Marketplace. Magnusson's current clients encompass highly regarded brands in the international furniture and automotive industries.

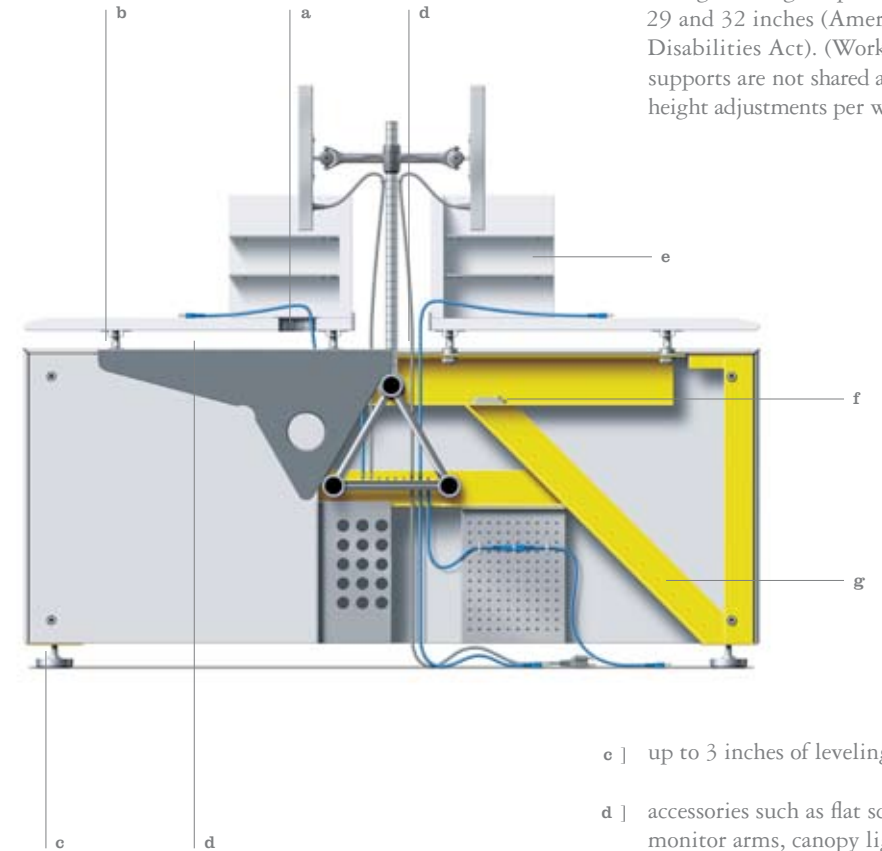
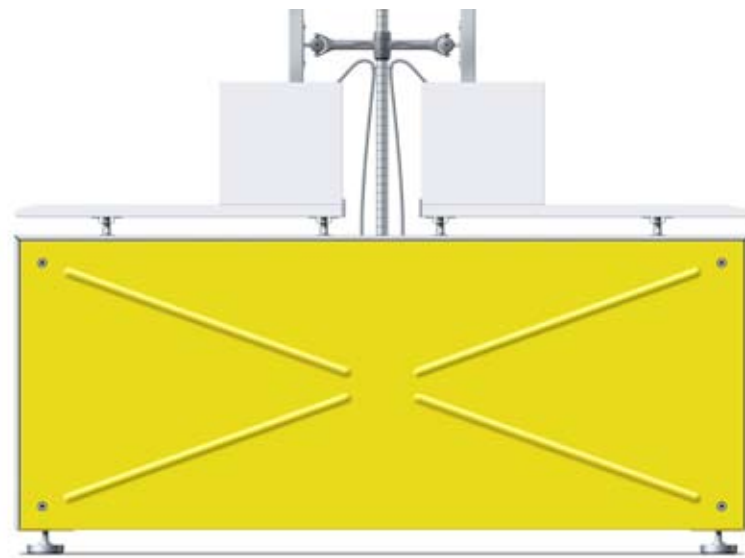
inspiration

"I was stuck in traffic and noticed this span — a truss over six lanes — and I was in admiration of this ubiquitous product and began wondering how I could use it in the office furniture industry. I draw inspiration from objects that illustrate the precept 'form follows function.' An industrial 'jerry can' provided the shape for the end panel. At the same time, the long table can be equipped with canopies that recall awnings one sees in open-air markets in Europe. In terms of function, these provide shelter, act as landmarks and convey a sense of place and community. I borrowed the Aviation Yellow color from the aircraft industry. It signals utility, strength and safety. Other elements address ergonomics and sustainable design. All express the purpose and spirit of Marketplace."



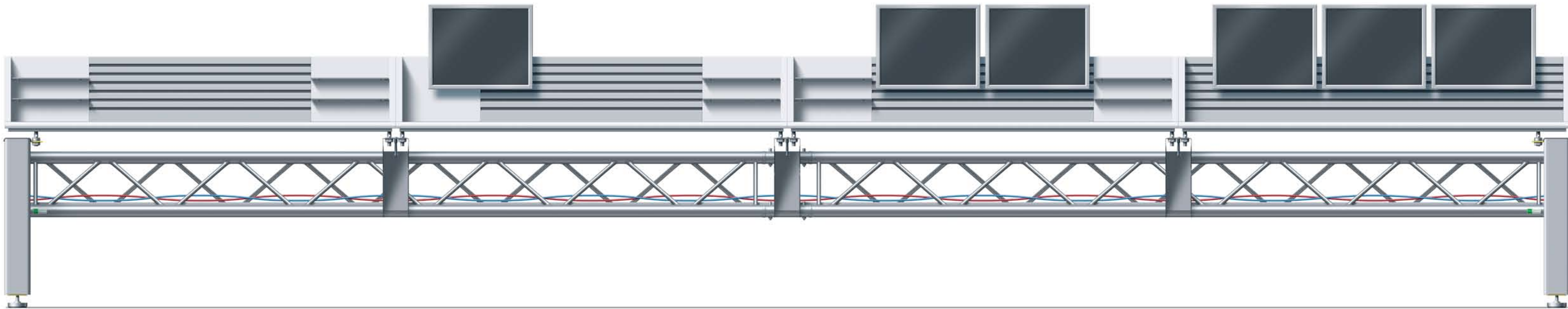
advantages

Visibly and functionally different, Marketplace offers significant advantages over existing worktables. Marketplace is scaled to respect space limitations, accommodating eight 60-inch work desks in one uninterrupted span. Marketplace tables also offer generous wiring capacity, well-designed privacy options and a concise set of components that allow quick and easy installation. The limited inventory of parts and simplified infrastructure for power and data distribution reduces costs. In addition, Marketplace offers optional edges and finishes that coordinate with other Teknion products to create visual harmony throughout the office.



service

- a] options for accessing power and communications include: grommets, worksurface-height power bars and worksurface-height power and communications access doors
- b] worksurface supports allow for a range of height options between 29 and 32 inches (Americans with Disabilities Act). (Worksurface supports are not shared and permit height adjustments per worksurface.)
- c] up to 3 inches of leveling capabilities
- d] accessories such as flat screen monitor arms, canopy lights and task lights can be easily mounted along the truss, saving valuable worksurface real estate
- e] privacy angles cleanly divide space between workers and help organize work by providing paper and peripheral technology device storage
- f] built-in levels and all other necessary installation tools are included and neatly store within End Gables
- g] 4 inches of easily accessible internal cavity allows for storage of patch plates and other technology



In today's economy, interaction and accessibility among people at all levels of the organization is key. The Marketplace table facilitates collaboration and the spontaneous exchange of information and also affords options for privacy, allowing people to control their connection with others. At the same time, tables can be quickly changed and modified as teams and projects evolve, recognizing that today's workforce is also highly mobile and companies must be flexible and agile. Marketplace is a simple, rational solution that changes the landscape of the interconnected office and helps companies attract the knowledge workers that drive innovation.



collaboration

Marketplace is ideal for collaborative workspaces where free-flowing communication is essential, including meeting rooms and organization-wide open plans designed to accommodate multiple project teams. Power and communications cables are discreetly housed and distributed to fully support technology. Marketplace tables also integrate with Teknion freestanding or systems furniture to create a unified office landscape.

- back edges of worksurfaces butt together to maximize usable space
- space is defined in subtle ways — aluminum back edge, worksurface seams, and placement of accessories such as monitors and task lighting
- power/communications access is both obvious and easy



benching

Benching work environments are often loosely defined touchdown, team or hybrid work areas within an open office landscape. Marketplace provides a multi-functional response for these ever-evolving environments that allows integration of lighting and accessories that serve to create a degree of visual privacy. Minimal components maintain simplicity and ease quick installation or reconfiguration.

- worksurface separation defines space
- glass screens define space while allowing light
- worksurface gap allows access to truss for power/communications access



open stations

Marketplace unites minimal structure with maximum functionality, allowing higher workstation density, providing accessibility to team members and serving a range of planning scenarios. Marketplace easily integrates with existing architecture and both freestanding and systems furniture. Technology is fully supported and accessible without compromising the tables' uncluttered look.

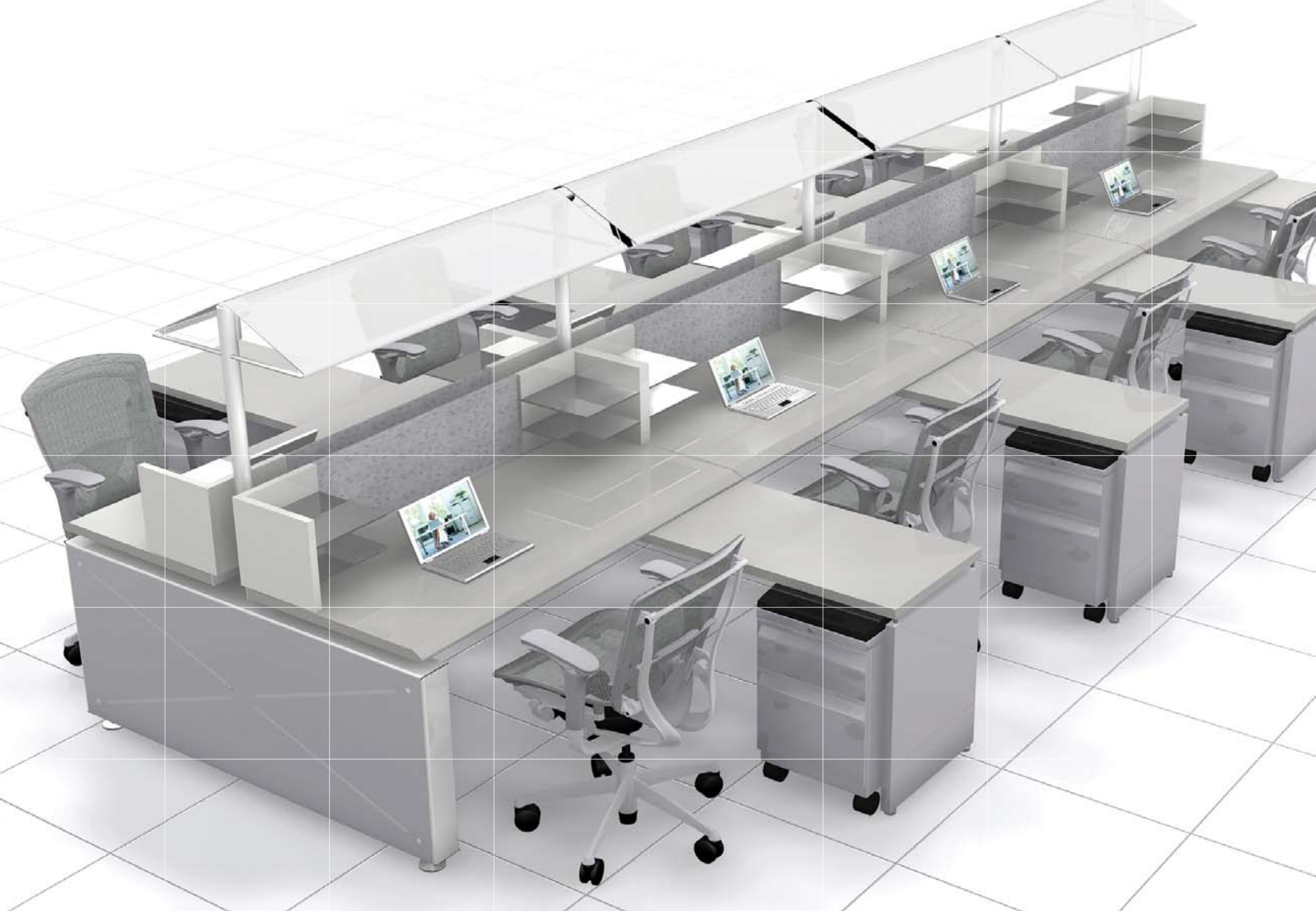
- greater need for defined workspace is accomplished by privacy angles and privacy angle inserts
- need for personalization of workstation accomplished through use of accessory rail and tackable inserts
- paper flow accomplished by accessory rails and privacy angle shelves



permanent address

Marketplace is designed for application throughout the workplace, including permanent addresses that require a clear definition of space and a higher degree of privacy. Canopies enhance a sense of place, while screens, paper trays, worksurface extensions and storage pedestals create a complete workstation that can support various tasks and individual needs with minimal bulk and complication.

- canopies provide ambient lighting and help define teams and departments
- additional workspace and storage are provided by integrating Teknion storage and auxiliary worksurfaces

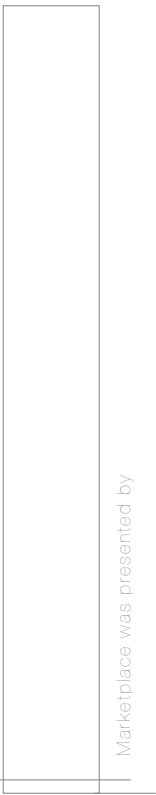
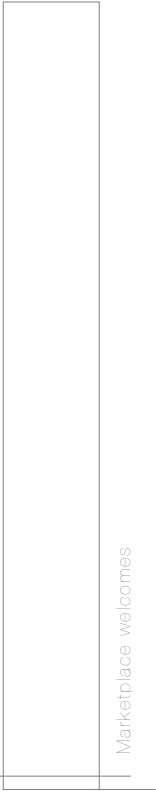


technology desking

Marketplace is designed to support the power and communication demands of large projects and the intensive use of technology in banking and trading environments, design studios and architectural offices. Power or data cables are discreetly housed in the tables' end panel and distributed via the supporting truss for quick access at the worksurface.



The content of this brochure is privileged and proprietary information of Teknion and under no condition can it be reproduced, disclosed to others or used for any purpose other than that for which it is given without Teknion's prior written consent. All images are preliminary and subject to change.



TEKNION

www.teknion.com

IN THE USA:

350 FELLOWSHIP ROAD
MT LAUREL, NEW JERSEY
08054 USA
TEL 877.TEKNION
FAX 856.552.5088
E-MAIL
info.us@tekniion.com

IN EUROPE:

101 GOSWELL ROAD
LONDON EC1V 7EZ
UK
TEL 020.7490.2101
FAX 020.7253.6105
E-MAIL
info.eur@tekniion.com

OUTSIDE EUROPE AND NORTH AMERICA:

1150 FLINT ROAD
TORONTO, ONTARIO
M3J 2J5 CANADA
TEL 416.661.3370
FAX 416.663.6666
E-MAIL
tekintl@tekniion.com

IN CANADA:

1150 FLINT ROAD
TORONTO, ONTARIO
M3J 2J5 CANADA
TEL 416.661.3370
FAX 416.661.4586
E-MAIL
info.can@tekniion.com

FOR INVESTOR INFORMATION:

TEL 416.661.3370
FAX 416.661.7970
E-MAIL
investor.information@tekniion.com

CAN/US/INT 04-07

©TEKNION 2007

®, ™ TRADE MARKS OF TEKNION CORPORATION
AND /OR ITS SUBSIDIARIES OR LICENSED TO IT.
PATENTS MAY BE PENDING. SOME PRODUCTS MAY
NOT BE AVAILABLE IN ALL MARKETS. CONTACT YOUR
LOCAL TEKNION REPRESENTATIVE FOR AVAILABILITY.

BROCHURE DESIGN: VANDERBYL DESIGN

PRINTED IN CANADA

SB070054

TEKNION'S COMMITMENT TO SUSTAINABILITY PRACTICES IS REFLECTED IN OUR DESIGN, MANUFACTURING AND DAILY OPERATIONS. THESE INITIATIVES DRIVE OUR GROWTH AND INNOVATION, STRENGTHEN CLIENT RELATIONSHIPS, ARE GOOD FOR BUSINESS AND, OF COURSE, THE ENVIRONMENT. WE ARE COMMITTED TO CONTINUALLY LEARNING FROM AND EVALUATING OUR RESULTS TO ACHIEVE OUR GOAL OF TOTAL SUSTAINABILITY.