

TERRITORIAL NEWS



Western Regional Button Association
Volume 13, Number 3
AUGUST 1, 2015

INSIDE THIS ISSUE

PRESIDENT'S MESSAGE	1
PROPOSED BYLAWS CHANG	2
WRBA OFFICER NOMINATIONS AND ELECTIONS	5
HOTEL INFORMATION FOR WRBA, Sept 30—Oct 3, 2015	5
HERE FISHY, FISHY! <i>by Claudia Chalmers</i>	6
NBS 2016 SHOW ANNOUNCEMENT	17
CROSSTOVERS & POSSIBILITIES FOR <u>MATERIALS</u> <i>by Joy Journey</i>	18
CROSSTOVERS & POSSIBILITIES FOR <u>PICTORIALS</u> <i>by Joy Journey</i>	24
BUTTON BONANZA TENTATIVE PROGRAM: Sept 30—Oct 3, 2015	30
MORE TO DO WHILE YOU ARE IN RENO FOR WRBA 2015!	32
EVERYONE BRING BUTTONS FOR THE BUTTON SALES Sept. 30th	33
SHIPPING COMPETITIVE TRAYS TO WRBA 2015	33
CALL FOR VOLUNTEERS: REGISTRATION AND JUDGING	34
CALL FOR AUCTION DONATIONS	34
BUTTON EVENTS CALENDAR	35
W.R.B.A. TO HOST N.B.S. 2016 IN DENVER	36



c/o C. Joy Journey, Editor
32545 Eagle Vista Drive
EAGLE RIVER, AK 99577

VISIT OUR WEB PAGE AT WWW.WRBA.US

An interest that is not nurtured fades.
Knowledge that is not shared dies
with the mind of he who hoards it.
A pleasure that is not shared is a
feeble pleasure, indeed.

WRBA Mission Statement

- ♥ **Establish an affiliation, a forum, and an identity for all Western U.S. button collectors, including those who are not part of any local organization**
- ♥ **Unite the isolated collectors of the west with the established clubs**
- ♥ **Pool the talents and resources of members for enrichment of the hobby**
- ♥ **Keep us all in touch via the territorial newsletter**
- ♥ **Host a regional show with the purpose of:**
 - **Recruiting those fascinated by buttons into the hobby**
 - **Providing educational workshops & presentations**
 - **Learning through competition**
 - **Meeting dealers and obtaining buttons for our collections**
 - **Refreshing our interest and ambition in collecting**
 - **Enjoying the camaraderie and fun of gathering together**

www.wrba.us

WRBA BOARD

President **Harriett Brittenham**
720 851-2574 brittmh@aol.com
6174 Saddlecreek Trail
Parker CO 80134

Vice President **Carolyn Boes**
702-293-4177 LVCarnlyn21@aol.com
211 Jasmine Way #2 Boulder City NV 89005

Secretary **Barbara Johnson**
360 893-0647 bljbuttons@juno.com
718 Maple Lane SW
Orting WASHINGTON 98360
844 S 82nd Pl, Mesa AZ 85208 winter

Treasurer **Susannah Jordan**
303 442-5511
buttonsgandmas@earthlink.net
4475 Laguna Place #214
Boulder CO 80303-3764

Past President **Tom Barrans**
559 683-6418 tombarby@sti.net
P O Box 2556, Oakhurst CA 93644

Show Chair **Joy Journeay**
907 223-1040 joyjourneay@gmail.com
32545 Eagle Vista Drive
Eagle River AK 99577

Web Chair **Mika Jarmusz**
503 371-0868 mikajz@comcast.net
2845 "D" Street NE, Salem OR 97301

Judging Chair **Barbara Barrans**
559 683-6418 darbysbarb@aol.com
P O Box 2556, Oakhurst CA 93644

Awards Chair **Tom Barrans**
559 683-6418 tombarby@sti.net
P O Box 2556, Oakhurst CA 93644

Membership Chair **Yessy Byl**
11144 67th Street yessyb@telusplanet.net
Edmonton, Alberta T5B 1K8 CANADA
780 474-8101

Fundraising Chair **Chris McCarthy**
360 391-4098 pielady48@gmail.com
P O Box 1082, LaConner WA 98257

Newsletter Editor **Joy Journeay**
See Past President listing above.

At-Large Member **Bev Heebner**
360 352-5793 bevandcharlie@hotmail.com
5503 110th Avenue SW
Olympia WA 98512-9220

Membership

WRBA membership year is Jan-Dec.
Save \$5 by joining for two years!

Annual Two-Year

Junior (ages 8 thru 17)... \$5 \$10
Active member—print..... \$25 \$45
Black & white newsletters,
printed and mailed
Active member—email.... \$20 \$35
Color PDF newsletters,
sent via email
Dual membership..... \$30 \$55
*residence at same address; one
newsletter sent in selected format
Life..... \$250

Membership is required to receive
the newsletter, compete in competition,
or to vote and have a voice in WRBA
business.

If you join midyear, old issues will
not be mailed to you. However, you
may ask to receive past issues via email
in PDF format.

Send check or money order to the
Treasurer (*address inside front cover*),
payable to WRBA or pay via PayPal to
treasurer@wrba.us.

Advertising

WRBA News is published four (4) times
per year, and is distributed
electronically or via the US mail.

Rates	Dimensions	Per	Per
Page**	H x W	Issue	Year
¼ page	2" x 5½"	\$25	\$85
½ page	4" x 5½"	\$35	\$120
Full pg	7½ x 4½ "	\$50	\$165

**based on 8x5 inch layout

Submission deadlines

Jan 5, Apr 5, Jul 5, Oct 5

Submit advertising copy to the editor.
Submit payment by PayPal to Treasurer.

Member States

ALASKA
Joy Journeay 907 223-1040
4000 Truro Drive, Anchorage AK 99507
joyjourneay@gmail.com

ALBERTA
Yessy Byl, 11144 67th Street
Edmonton AB CANADA T5B 1K8
yessyb@telusplanet.net 780.474.8101

ARIZONA
Roberta K. Schuler, 520 296-8196
6565 E. Crimson Sage Dr., Tucson, AZ 85750
bklasic@comcast.net

BRITISH COLUMBIA
Norah Clark, 3070 Collens Hill Road
Kelowna BC CANADA V1Z 1P5
norah@button-shop.com 877 769-4696

CALIFORNIA
Janelle Giles, Membership CSBS
jgiles@gmail.com

COLORADO
Jane Hill, 6 Purdue Court
Longmont CO 80503-2145
jane.e.hill@gmail.com 303.772.9248

HAWAII
Don Ortwein, 808.262.7061
515 Ululani Street, Kailua HI 96734
donsbuttons@hawaiiintel.net

IDAHO
Simone Carbonneau-Kincaid, State President
208.667-0072
sckincaid@gmail.com

NEVADA
Gil Biggle
9075 Wigwam Way, Reno NV 89506
dbgb@charter.net 775.971.9538

NEW MEXICO
John & Judy Harris
P O Box 271, Mesilla NM 88046
jlharris15@juno.com 505.526.1156

OREGON
Peggy Mathes
1040 West 16th, Eugene OR 974
twodog@clearwire.net 541.485.1356

SASKATCHEWAN
Darlene Orr, 4044 20th Street #12
Vernon BC CANADA V1T 4E3
d.orr@shaw.ca 250.549.1819

UTAH
Barbara Halls, 2976 W 5600 S
Roy UT 84067, 801.774.9154

WASHINGTON
Dale Parkhurst, President
11529 23rd Avenue NE, Seattle WA 98125
dalep@gohuskies.com

WYOMING
Kathy & Bob Buckardt, 807.742.7415
4511 Mockingbird Lane, Laramie WY 82070
bobbkat1031@mindspring.com

PRESIDENT'S MESSAGE

SUMMER 2015

I absolutely love this time of year! The flower pots in the courtyard have survived the many Colorado spring storms and the lawn and surrounding fields are green. Can there be time just to enjoy it all? Absolutely not! There is no time to linger as in a few short days many of us will be gathering for the annual National Button Society Convention.



I always look forward to renewing friendships and meeting new collectors at National. However, there are three more reasons to be excited this year as three new publications are available. If you attended the Idaho show, you've already seen the new "*NBS Black Glass Handbook*" by WRBA members Joan Lindsay and Simone Kincaid. The edition is stunning and full of new scans and information. This will be a must-have for everyone. Congratulations Joan and Simone!

Ronnie Kauk of Kansas just published "*Designer Logo Buttons*" a wonderful study of clothing designers, their clothing and buttons. What a great resource for identifying so many 20th Century buttons. Jerry DeHay and Lou Yeargain have completed their work on updating the "*NBS Yellow Book on Pictorial Overall Buttons*". The new color plates and extensive information about these great, collectible buttons will serve as a reliable text for collectors. I intend to return home with all three of these new books, all signed by the creators!

The NBS convention is in Manchester, NH, a long trip for those of us in the West. If you are unable to travel that far this year, we have great news. Through the leadership of Joy Journey and Susannah Jordan, plans for our WRBA-hosted 2016 NBS convention in Denver, CO are moving along. This will be a must-attend convention for all WRBA members so put July 31-August 6, 2016 on your calendar, now.

Lastly, you will find everything you need to know about this year's WRBA Show and Meeting in Reno, NV, Oct. 1-3. Show Chair, Joy Journey, has creatively put together a wonderful program of education and entertainment and brought together button dealers from all over the U.S. WRBA Shows are known for being fun and busy. I hope to see a record turnout this year!

Happy Buttoning everyone, and we'll see you in Reno in October!
Thanks Mom,
Hay

PROPOSED W.R.B.A. BYLAWS CHANGES

DATE: July 17, 2015
TO: All WRBA Members
FROM: Harriett Brittenham, WRBA President
SUBJECT: Proposed changes to the bylaws of the Western Regional Button Association

First, let me thank you for allowing me to serve WRBA. It has truly been a pleasure and your current Board of Directors is amazing! As the Board worked through various agenda items over the past two years, it became evident that there were questions about certain functions and tasks within the Board of Directors structure. In other words, who did what and how did they get there? Leaders and Boards are often reminded that an effective organization adopts rules and operating procedures which offer a clear map for conducting business and transitioning leadership. And while WRBA's Bylaws were well defined, the Board identified a few areas required clarification.

During the Spring, 2015 Board of Directors Meeting, we voted on changes to be forwarded to the membership for approval. The vote will be held at the membership meeting in October, 2015 and absentee ballots will be sent to those unable to attend the meeting in Reno.

The two areas of the Bylaws addressed by the Board were:

Board Membership and Voting Privileges: The proposed changes define the Officers of the Board who have voting privileges. As seen in the proposed changes to *Article III, Definitions*, **Member-at-Large** was added as an Officer and made a permanent voting member of the Board of Directors. Thus, the Member-at-Large would be nominated and voted on by the membership as are other officers.

Election of Officers: In order to clarify and streamline this process the Board used the current guidelines within WRBA Job Descriptions. Under the change, the manner in which officers

are nominated and elected are clearly defined making them consistent year to year. Under the changes to *Article VIII, Officers*, the Vice President assumes the role of forming a Nominating Committee, serves as its Chair and oversees the election process.

While there are not many changes, the adoption of these amendments will clarify the roles and responsibilities of the Board of Directors for everyone. It will also ease transition of leadership following each election.

Should you have any questions about the proposed changes, please contact me directly, 720-851-2572, 720-810-2715 or brittmh@aol.com. We'll see you in Reno.

Yours in buttoning,
Harriett Brittenham
WRBA President

(Note: Proposed additions are in red print and proposed deletions are indicated with a strikethrough. Article XVIII, Amendments is shown to define the process needed to revise these Bylaws. Following the vote, the Bylaws will be available through the WRBA website.)

PROPOSED CHANGES TO THE BYLAWS OF THE WESTERN REGIONAL BUTTON ASSOCIATION (WRBA)

ARTICLE III DEFINITIONS

2. "Board of Directors," herein, shall mean and refer to the current President, Vice President, **Member-at-Large**, Secretary and Treasurer, its successors and assigns.

ARTICLE VIII OFFICERS

1. Officers. The officers of the Association shall be a President, a Vice-President, **a Member-at-Large**, a Secretary, a Treasurer, and such other officers as may be elected in accordance with other provisions of this Article. The Board of Directors may elect such other officers or agents (such as Show Chairperson) as it shall deem desirable and such officers shall have the authority and perform the duties prescribed from time to time by the Board of Directors. Any two or more offices may be held by the same person, except the office of President. All officers must be members of the Association and

reside within the boundaries of WRBA as described in Article III, Paragraph 6.
a. Additional offices that may be deemed appropriate to be designated as Board positions **with voting privileges** include, but are not limited to the following: Show Chair, Newsletter Editor, Webmaster, Education Chair, Awards Chair, Fund-Raising, **and "At-Large" positions.**

6. Vice President. The Vice-President shall have all the duties and powers of the President in the absence of the President; and shall assist in additional duties as directed by the President. The Vice-President is not allowed to sign for a check written to him or herself as payee. **The Vice-President shall chair a Nominating Committee and secure nominations for the Board of Director positions of President, Vice-President, Member-At-Large, Secretary and Treasurer prior to the semi-annual election. The Nominating Committee shall also conduct the election.**

ARTICLE XVIII AMENDMENTS

An amendment to these Bylaws may be offered in writing to the Board of Directors, who shall submit it by publication in the Newsletter to the General Members of the Association prior to the next Annual Meeting. A super-majority vote (2/3rds) of those voting at the meeting shall be deemed necessary for enactment. The Board or Nominating Committee shall enclose instructions for casting absentee voting with any proposed amendments.



**Judy Schwenk & Jim
Nolan**

5518 Sugarloaf Street
Anacortes, WA 98221
(360)-293-2315
anajamm@comcast.net

We buy any size collections.



BUTTON BONANZA

SEE PAGES 30-35 FOR MORE SHOW INFO!!!

WRBA 2015 HOTEL

Harrah's Hotel & Casino

219 N Center Street, Reno NV 89501 (775) 786-3232
(888) 726-6311 reservations \$10WRBA
\$59 a weeknights, \$99 Friday & Saturday

Harrah's has seven restaurants and a 60,000 sq. ft. casino. All reservations must be guaranteed with a deposit for the first night's guestroom and tax charge. Small pets are allowed for a fee. There is also a complimentary airport shuttle.

Tips for room reservations: The WRBA show will be held in the base of the WEST TOWER. The West Tower is connected to the main hotel and casino, and houses the pool. For City Views, with the mountains in the background, can be seen from even-numbered rooms ending in *02 -*24 or *28 -*48, on floors 14-24 (e.g. 1506, 1820, 2340). For Quiet: Even-numbered rooms facing 2nd St. in the West Tower can be noisy, depending on events occurring downtown. Odd-numbered rooms in the East Tower can be a bit noisy as they face the street and baseball field.



WRBA OFFICER NOMINATIONS & ELECTIONS

Your nominations for WRBA officers (2-year terms) are due now! If you are interested, or would like to nominate a person, please contact our Vice President, Carolyn Boes, at LVCCarolyn21@aol.com.

President: appoint chairpersons & representatives; delegate; preside at meetings; prepare agendas; sign documents.

Vice-President: perform in the absence of the President; assist in duties; chair nominating committee and conduct elections.

Treasurer: Receive and deposit monies; disburse funds; keep financial record; develop budget; prepare financial reports.

Secretary: Keep minutes and record votes; maintain and preserve records and correspondence.

HERE, FISHY, FISHY! *by Claudia Chalmers*

*With special thanks to contributors:
Merry Jo Thoele, Cathy Mayer, and Rebecca Lyon*

My husband is an avid fisherman in the true tradition of Minnesota fresh water fishing. Our 10,000 lakes tempt him every weekend all year long – even with several feet of ice on them. I, on the other hand, am a fair weather fisherman. If the weather is too hot, too cold, too wet, too windy, or too humid my husband is on his own; you will find me in my button room – doing my own type of fishing!

Fish are an interesting subject for buttons. They were not overly popular during the 19th century, so Division I samples (pre-1918) are not very easy to find. In the mid to late 20th century, however, fish gained popularity in the button world, and modern samples are fun to watch for.

By definition, fish are vertebrates (they have a backbone). They are cold blooded, have gills and fins, and usually, but not always, scales. Some oddities that fit this description are seahorses, eels, sharks, and the various types of rays (manta rays, sting rays, etc.) Animals that are not fish, but are often misclassified, are octopi (no backbone), dolphins, porpoises, and whales (warm blooded mammals without gills).

My philosophy when collecting fish buttons appears on the next page. Perhaps you wonder why I am quoting a children's book? Well, this short poem segment contains all the necessities of a good card of fish buttons: variety in fish types, fish activities, button ages (when age of the button doesn't matter) and, of course, materials. Fish types most commonly found on buttons are angelfish, types of carp (goldfish, koi, etc.) [Editor's note: Minnesotans aren't too fond of carp, but Asians love them!], sailfish, trout, salmon, and seahorses. Of course, many buttons depict unidentifiable or even stylized fish. Sometimes you can just tell that the artist was just having a good time creating his or her own fish. Fish activities would include jumping out of the water, eating, and, unfortunately, being hooked, netted, or speared (and that about sums up the life of a



Modern laser carved vegetable ivory button depicting a school of fish.



*One fish
Two fish
Red fish
Blue fish*

*Black fish
Blue fish
Old fish
New fish*

*This one has a little star
This one has a little car.
Say! What a lot
Of fish there are!*

*Yes. Some are red. And some are blue.
Some are old. And some are new.*

*Some are sad.
And some are glad.
And some are very, very bad.*

*Why are they
Sad and glad and bad?
I do not know.
Go ask your dad.*

*From there to here, from here to there.
Funny things
Are everywhere.*

One fish, Two Fish, Red Fish, Blue Fish by Dr. Seuss

fish). It is possible to find multiple fish on one button: two, three, four – or even a whole school! Realistic fish buttons are plentiful, but geometric shapes are not, so be on the lookout for squares, triangles, balls, etc.

Hopefully the images that follow spark your awareness of fish buttons. Pretty soon, you'll be sitting in your own button room, on a nice Saturday morning—fishing.

Celluloid

Very flat and fragile celluloid realistic. Nearly transparent in places. Paint decorative finish.



Ceramics



Two modern Satsuma buttons. High, sharp edge shank indicates these were made between 1950-1965. Button at left shows a member of the tuna family. Button at right shows a type of tang tropical fish.



Vintage ceramic button. Realistic and quite large. Two hole sew through.

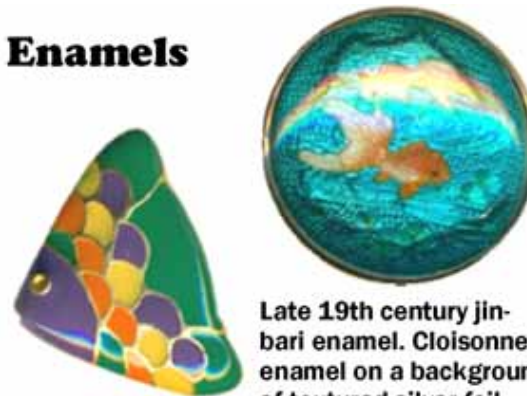


Vintage ceramic button with gold glaze. Circa 1940s to 1950s. Art deco look.

Known as "Arita" porcelain to collectors, these beautiful modern buttons date from 1940-1980. They were imported from and are commonly backmarked "JAPAN."

Modern ceramic button. Two hole sew-through.

Enamels



Modern enamel button. Stylized angelfish.

Late 19th century jinari enamel. Cloisonne enamel on a background of textured silver foil, covered with transparent enamel. Mounted in silver. Goldfish.



Modern plique-a-jour enamel button features two well camouflaged tropical fish. Transparent enamel fills spaces in pierced metal design.

Fabric



Modern fabric button. Embroidered woven cover.



Modern studio button petit pointe of an identifiable powder blue tang. Backmark is a "K" scratched in the metal back.



Modern fabric button by the Lilac Bow Yoke. This company has been making beautiful and diverse fabric buttons since 1989.

Black Glass



Two small antique black glass buttons. An outlined design of a speared fish, and a beautiful silver lustered recessed embossed design.



Medium sized antique black glass fish button with an embossed surface design. This button has an iridescent luster decorative finish.



Modern realistic with silver luster decorative finish. Self shank. Medium.

Clear & Colored Glass



A two-piece clear glass button. Part of a zodiac set, it has the symbol for Pisces molded in intaglio on the reverse of the top section which is then adhered to a bottom section with a self shank. Size small.



Modern Czech realistic moonglow, lightly pearled to give appearance of fish scales. Size medium.



Modern navy blue glass with silver luster decorative finish. Identifiable sailfish.

Clear & Colored Glass (continued)



Paperweight studio button by Will Stokes of Blue Flame Studio in Washington. Signature cane: WS 95.



19th century ruby glass in a lozenge shape. Recessed embossed surface design. Deep set self shank with thread grooves. The fish is presumably a sturgeon.



Very pale pink glass. Self shank with deep thread grooves. Most likely a vintage, not antique, button. Size medium.



Vintage glass realistic from the 1930s to 1940. These may have been parts of sets, but they were not of the same set, judging from the differences in the self shanks. Paint decorative finish.



White glass with seahorse overlay. Modern studio, possibly by Kinta Clark. Blue cane marked with a "K". Repurposed antique shank.



Glass in Metal



Three painted goldfish with bubbles and plant life molded in intaglio on the reverse of domed glass. Set in white metal. Vintage.



Modern white glass button with a hand painted design of a fancy goldfish. Set in white metal. Oval shaped. Size medium.



Modern realistic with pale blue paste jewels set in white metal. Size large.

Horn



Antique dyed and molded horn button of game fish in cattails.



Antique molded and dyed horn button. Stylized carp.



Very large, modern, carved water buffalo horn button. Utilizes natural variations in horn color to decorate fish. Two hole sew-through.



Same description as the button above, but this one is also carved and painted on the back. Totally reversible.



Modern horn button. Natural variations in horn color provides coloring of fish. Two hole sew-through.

Metals



Pierced white metal button with applied sailfish escutcheon.



Sterling silver. Salmon or trout.



Silver seahorse button. Back shows that it is a repurposed coin: Singapore, 1970.



Antique brass picture button, identified in the Big Book of Buttons as a flying fish. [Editor's note: I think it looks like a catfish.] Steel back with "P.H. PARIS" back mark. Small.



Modern white metal button. Trout jumping over stylized water.



Modern white picture button. Pierced design with white paste embellishment.

Metals (continued)



Antique steel button. Brass fish head in unusual head-on aspect is applied to steel plate. Steel cut eyes for embellishment. Small.



Modern cold enamel decorative finish on metal, realistic angel fish shape. Paste jewels are under surface of final clear coating.



Damascene studio button by Mario Ballesteros, late 20th century. Signed. Identifiable sailfish.

Shell



Modern realistics. Circa 1950s-1970.



Bethlehem pearl. Pierced example. Two carp circling four hole sew-through center.



Plain smoky pearl button with pewter fish escutcheon.

Synthetic Polymers



Hand painted casein button by Edith and Alan Brooks, 1960-1980.



Engraved (imitation scrimshaw) polyester by artist Kay McLelland. Signed but not dated.



Bakelite cookie sew-through.



Molded, painted polyester resin trout. Made by the JHB button company, 1998-99.



Engraved (imitation scrimshaw) polyester by studio artist Linda Layden. Beautiful depiction of a large mouth bass about to get hooked.



Acrylic set in metallized plastic. Known as a "jelly belly" to collectors, some have stones of glass.



Polyester "Junque Deco" button. Metal findings embedded in clear plastic, set in metal. Seahorse.



Two Bakelite fish. The red one is quite chunky, carved, and shanked. The brown one is flat, molded and a sew-through.



Polymer clay studio button by Claudia Chalmers. Backmarked "CC 98" (1998). Embellished with sea shells. Metal shank.

Vegetable Ivory



Vegetable ivory salmon in midst of a jump. Carved on both sides. Two hole sew-through.



Modern vegetable ivory sting ray.



Modern vegetable ivory button. Carved on both sides. Dyed decorative finish. Peg shank. Typical Oriental posing of carp (see the boxwood sample next).

Wood



Modern carved boxwood carp. Hand carved in China. Peg shank and artist's signature on back in Chinese characters. Made since 2001.



Modern wood button inlaid with etched and pigmented bone. Inlaid signature on back. Made in China since 1990.



Carved ironwood. Made in China since 1990. Peg shank. Artist's signature on bottom.



Whimsical painting on wood realistic button. Folk art overtones. Modern.



Wood button with paper decoupage embellishment. Wood is entirely painted green. Signed LBW: Lib Welshons. Identifiable



Vintage hand carved wood realistic with gold paint.

Bone



All three of these buttons are **scrimshaw designs on bone**. Since the 1990s, hand worked bone buttons have been imported from China. Note the maker's mark on button on right. Button on left is naturally shaped bone. Button on right has been wheel turned with a deep dish at center.

Composition

This is our only empty material! Despite the best efforts of four experienced collectors, none could find or even recall seeing a composition fish button! If you have one in your collection, please contact the editor so that we can feature it in a future bulletin.

Ivory



Native Alaskan carving on walrus ivory. Circa 1900-1940s.



Hand carved ivory button of unknown age and origin.

Rubber



Modern rubber button. Buttons of this soft rubber material have been on the market since about 2000.

Other Materials



A small school of coconut shell angelfish. The two smaller samples are unpolished. The lighter sample has the dark brown bark removed, and the brighter sample is polished. Most of these have been made commercially for tourist trade. Many were made in the 1930s, but they enjoyed a comeback in the late 1990s through the JHB Button Company.



Two jade buttons. Modern imports from Asia. Hand carved.



Stamped and colored white leather studio button by Cathy Mayer. Identifiable sunfish.



Paper mache, hand painted from Russia. Back marked "C&B Weiser," the button dealers who commissioned these buttons, and signed and dated 2011 by the artist. A handful of seahorses is an unusual subject matter.



Vintage plaster realistic seahorse from the 1940s. Metallized finish.



Hand carved pipestone studio by Claudia Chalmers. Signed "CC 02" (2002). Embedded metal shank.



Rock crystal, hand carved on both sides. Imported from Asia since 2000. Self shank. Two fish joined belly to belly.

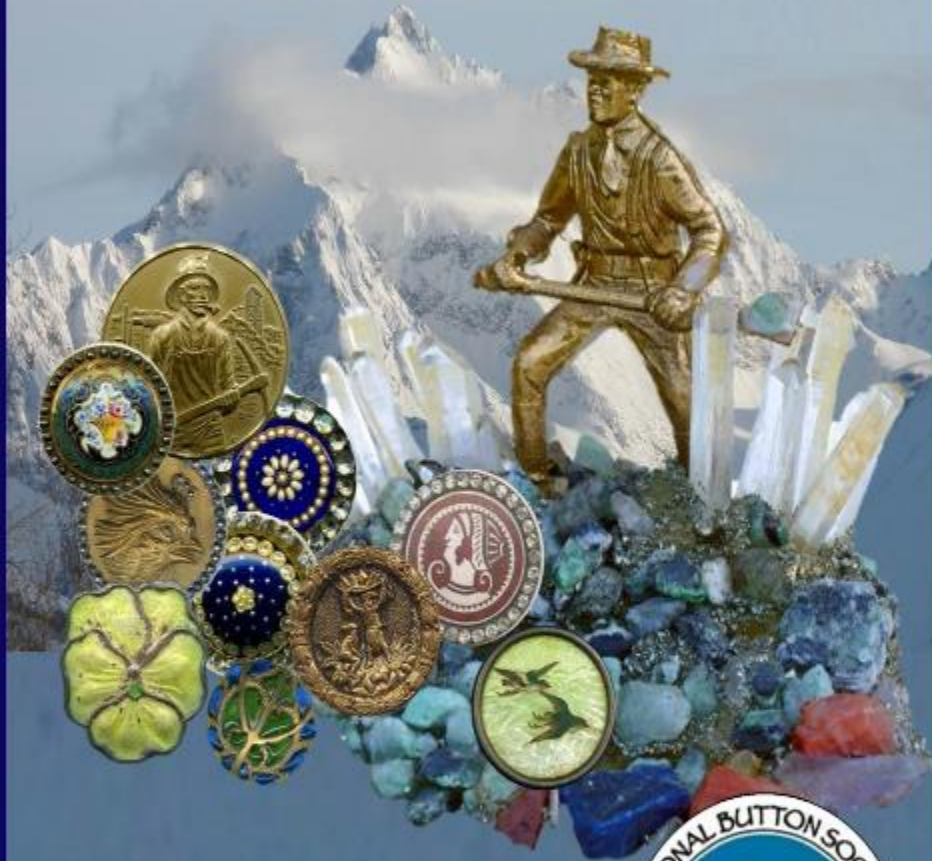


Hand painted plaster studio button by Claudia Chalmers. Backmarked "CC 14" (2014). Embedded silver wire shank.

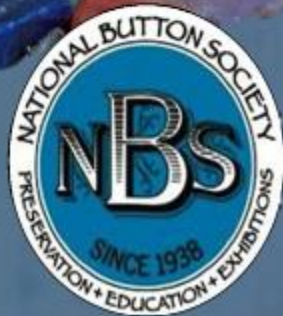
References:

- Button Gallery. 2012. Accessed June 29, 2015. www.buttoncountry.com/Gallery.html. Online
- Howells, Jocelyn. Button Materials A-Z. Portland, OR: JossButtons. 2006. Print.
- Hughes, Elizabeth, and Marion Lester. The Big Book of Buttons: The Encyclopedia of Button History, Design, and Identification. 2nd ed. Haworth, N.J.: St. Johann, 2010. Print.
- Lester, Jane S. A Reference Book on Studio Button Makers. Willmington, MA: Arro Press, 1997. Print.
- Malloy, Meagan. Studio Buttons and the Artists Who Make Them. 2009. Print.

MINING IN BUTTON MOUNTAINS



NBS 2016 CONVENTION
August 1-6, 2016
The Crowne Plaza
Denver, Colorado



CROSSOVERS & OTHER POSSIBILITIES FOR BUTTON MATERIALS *by Joy Journey*

Often while composing trays for competition I envision one use for a specific button, and forget that the button can frequently be used in more than one class or subclass. Does that ever happen to you?

Buttons can be crossovers within the material classifications. I meandered through the NBS Blue Book and came up with this list to remind me of the multiple use possibilities for button materials.

Terminology in the NBS Blue Book on Pages 5 and 6 is often forgotten, but is helpful and encourages us to reconsider each of our buttons and not limit their value in our collection. Take time to go through your collection with crossovers in mind and see what you can find. You'll be surprised!

"A button that fits the award criteria, regardless of whether it can be used in another class, is acceptable unless specifically excluded by the award."

"Buttons that focus equally on more than one pictorial element are acceptable in all sections represented."

The Blue Book crossover paragraphs are also pasted below.

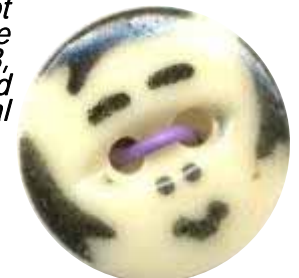
Crossovers (material): Although most buttons are appropriate in only one material section, some have "dual identities" based on their construction. Steel cups with other material centers (including backgrounds) may be used either as metal buttons (steel cups) or as the material mounted in the cup, such as pearl.

A steel cup with a different metal center is still considered a steel cup. Regarding buttons assembled from more than one metal, refer to page 41, Metals assorted.

Buttons with materials covered by a glass shield may be used in Sec. 8 (In/on/under glass) as well as in the section of the material covered by the glass, e.g., Ivory. All materials mounted in/on metal, except for glass, may be used in their respective material section, as well as in Sec. 23, Materials mounted in/on metal. Black and clear and colored glass mounted in metal may be used in Sec. 8 as well as Sec. 23.

SECTION 2

China buttons, Section 3, are also acceptable in Section 2 in Class 2-9 Unlisted,



so be sure to use one for a complete representation if you are completing a tray of Section 2, Ceramic buttons (Page 33).

SECTION 5

It is not unusual for fabric buttons to combine worked, wound or woven techniques, so many can be used in more than one class (Page 36).

Fabric buttons with beads (Class 5-7.1) also qualify as buttons with OME (*other material embellishment*) which is Class 5-6 (Page 37).

The green woven fabric button is topped with a worked five-lobe shape (crochet).

The pastel pink fabric is wound and features worked embroidered French knots in the button center.

Black woven fabric complements a needle-worked crown and border design.

Lastly, a white wound button is enhanced with tubular and round black glass beads (OME).



SECTIONS 6 & 7

A glass tinge button qualifies in several categories. It is glass with glass (Class 7-6.2), has a sheet overlay (Class 7-4.12 on the top), contains embedded foil (Class 7-4.6), and is faceted (Class 7-7.2) (Page 38).



Beautiful tinge buttons of amethyst, ruby, green and black glass. The acorn tinge at right also qualifies as a realistic black glass button.

A John Gooderham paperweight with a double sheet overlay ground into facet windows to show the foil elephant within.

Greg Hanson amethyst glass with a white, navy and black free form floral set up. Hanson's button is acid etched and coated with gold, and also features a flat facet top.

Studio paperweight buttons can be used in the appropriate glass section if labeled as studio, and in the appropriate subclass of Section 23-11 (Page 41).

SECTION 8

Buttons featuring other materials protected by a glass shield may be used in this section and also in the appropriate section for the material under the glass shield (Page 43).

These habitats are both under glass shields and above fabric, so qualify as fabric or glass set in metal. The butterfly in the oval button is accompanied by dried forget-me-knot flowers and buds, which each contain a gold nugget. This is the Alaska State Flower and the author wonders if this button was from the 1900-era gold rush.

The sail boat painted on paper is set in gold, and one from a set of six buttons. It qualifies as paper or glass in metal.

The painting on ivory depicting a young rider on horseback facing a wall of flames qualifies in button material classes as either ivory or glass set in metal.



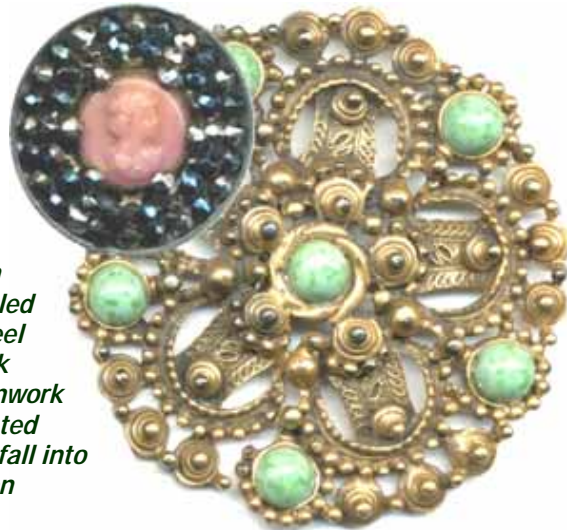
"Gay 90s" can be used in both Section 8 and in Class 23-6.3 (Page 43).

These two buttons are openwork. The left button features cut steel OME and a gilt finish. The one on the right has a lovely water lily border.



When both the glass appear to have the button may be Section 8 or the Section 10 subclass for glass OME..

This extra large four-inch button features six marbled glass cabochons. The steel cup holds an opaque pink glass cameo and an openwork metal structure with riveted cut steels. Both buttons fall into the field of equal focus on materials.



SECTION 10

Twinkle background buttons, Class 10-13.5 are also appropriate in Class 10-11 AS Backgrounds or Class 23-1.4.2 Twinkle Backgrounds.

The small brass button with a rope border has a fan over a red twinkle background. The small original tint rose button has a silver twinkle background only on the lower third of the button. The conventional design green tint button with a clear glass cabochon features a textured gold twinkle background.



Steel cups with other material centers (different from OME) can also be classed as the material in the steel cup (Page 46).

Metal buttons with OME, Class 10-14, which appear to have equal focus on the metal and the OME, the button may be used in this Section 10, and the appropriate OME material class (Page 48), just as noted in Section 8 for glass set in metal.



The steel cup with black glass beads qualifies also as a fabric button with black glass OME. The cup with the openwork enamel disk qualifies also as an enamel. The anchor with a leather background qualifies as either a steel or leather button. The Tour d'Nestle brass image appears above a pearl background, qualifying this button as pearl or steel. This is also true for the windmill Button. Note that it is also mechanical, as the cut steel blades move.

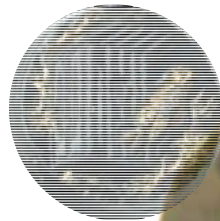




The small stamped brass button with cut steel OME depicts three Roman coins with men's heads. It can be classed in Section 18-3 or Section 20-10. The large brass button with a basket of flowers can be used in Section 18-4.1 or in Section 19-2. The button image is enhanced by a lovely white metal wallpaper background and a cut steel border.



These crest buttons can be used also as a rabbit, unicorn, or peacock.



A black glass button features A bird house and gold lustered bird.

This stamped brass large button can be classed in Section 18-6.3 as a boot, as a boy in Section 20-4, and also Section 20-20 for the story Hop O'My Thumb who is in the Seven League Boot of the Ogre.



CROSSOVERS & OTHER POSSIBILITIES FOR BUTTON PICTORIALS

by Joy Journeyay

Even more potential for crossovers occurs when we consider button pictorials!

Remember that pictorial glass mounted in metal can be used in PICTORIAL AWARDS specialized to black and/or clear/colored glass (Page 43).



This simple stamped brass button of Jason's fleece can be classed in Section 18 as a dead animal, in Section 17 as a mammal, and in Section 20 under Mythology.

SECTION 17: ANIMALS

Dead animals "in their entirety" (whole) are acceptable here as an animal and in Section 18 Objects.

Cartoon, comic, commercial and storybook animal characters can be used in the animal section and in Section 20.

Remember that TOY animals are not acceptable in the Animal section, and should only be used in Section 18 as objects (toys). For instance, Pooh, Piglet, Tigger and Eyore, (the Danforth pewter set from the popular Winnie the Pooh books) are toys in the books, so do not qualify on Animal trays.



Minnie & Mickey Mouse, classed as both cartoon characters and mice. Minnie is on a wood button with a burned image. Mickey is a transfer on a ceramic button.

Pooh, Pooh with Piglet, Piglet, and Tigger. Beloved toys from the books by A.A. Milne and appearing in Disney movies with their owner, Christopher Robin.



SECTION 18: OBJECTS

Coin types, heraldic and baskets with fruit or flowers can be used in this Objects section as well as the appropriate Plant/Animal section(s).

The small stamped brass button with cut steel OME depicts three Roman coins with men's heads. It can be classed in Class 18-3 or Class 20-10. The large brass button with a basket of flowers can be used in Class 18-4.1 or in Class 19-2. The button image is enhanced by a lovely white metal wallpaper background and a cut steel border.



Crests can be used in the section for the subject matter depicted or Class 18-2 Heraldic Devices.



These crest buttons can be used also as a rabbit, unicorn, or peacock.

Buttons with a birdhouse and bird are acceptable in both the Objects section and in Class 17-2 for the bird.

This black glass button features a bird house and gold lustered bird.

The stamped brass large button can be classed in Class 18-6.3 as a boot, as a boy in Class 20-4, and also Class 20-20 for the story Hop O'My Thumb, who is depicted here in the Seven League Boot of the Ogre.



SECTION 20

So many of our picture buttons offer multiple options, from the simplest buttons to the most complex.

Stars are acceptable in both Class 20-2 Astronomical and in the pattern Class 22-1.6.3 Star. The Star of David is also acceptable in Class 20-19 Religious.

Don't forget that "many plays and operas are based on earlier literature and folk tales (Page 57). So you can class as both the fable and animals depicted.



This simple sew-through composition star button features inlaid pearl OME.

These two fable buttons can be used in Class 20-20.1 or the appropriate Section 17 Animal class.



The button at left depicts the Pied Piper of Hamelin (note the rats at his feet), which is a poem by Browning and a traditional tale. The button has a steel moon over the village and is an NBS large. It can be used as a musician, man, or story.



Scaramouche and the crescent moon in brass over an abalone pearl disk. This button qualifies to be used as a moon, Class 20-2 Astronomical or in Class 20-21 as a theater topic.





Tom Thumb rides a butterfly in this large lead pewter design applied to a stamped brass button. He's got a charming flower cap and spurs on his heels. The button would qualify as a child, Class 20-4, in Class 20-20 as a story, and in Class 20-22.2 as Non-Human Transportation.

This button of dogs attacking a stag shows up often in competition trays specialized to dogs or deer. It can also be used in Class 20-15 mythology. The button depicts the Theban hero Actaeon, trained by the centaur Chiron, who angered lovely Artemis. She turned him into a stag and he was torn to pieces by his own hunting hounds who did not recognize him.



Buttons featuring Beatrix Potter animal characters can be used in the appropriate Animal section, and in Class 20-20 as a story button. The small amino button at left depicts the collie Kep.

Two crescent moon buttons with other subject matter. The stamped brass button known as the Imp of Pain can also be used in Class 20-9 for the gnome. The small Battersea pewter button with the owl on a crescent moon can be used in Class 17-2.2 Owls.



Animals performing in circus acts can be used in both the appropriate animal class and in Class 20-21.

A horse jumping with a rider can be used in Class 20-17 as a pastime or sport, and in Class 17-5.6 Horses.

The black glass button depicting the ship named the HMS Pinafore from the opera of the same name is acceptable in both Class 20-21 for the opera and in Class 20-22.1.1 Ships (BBB Page 383-29).

The NBS Blue Book terminology for pictorial crossovers is pasted below:

Crossovers (pictorial): Buttons appropriate in more than one pictorial class or section, based on the design. Buttons that focus equally on more than one pictorial section are acceptable in all sections represented. Examples are fable or story buttons with animals appropriate in both Secs. 17 and 20; baskets of flowers appropriate in both Secs. 18 and 19. Crest buttons depicting animals may be used as Animals or as Objects (the heraldic device itself is the object).



The smoky gray pearl button with the mouse and cut steel mouse trap is frequently used in Class 17-5 Mammals for the mouse. Equally prominent on the button is the trap, an unlisted object. Remember that a Section 18 button CANNOT have PEOPLE present.

The black glass button, with the border of fantastic animals, can obviously be used as a man or head. It is said to depict Lohengrin, so could be used for the opera. It has also been called Odin (Wodin is the Old English spelling) and King Harold. If used as Odin, it is a mythology button.

A winged cherub pilots a shell boat, with a lighthouse in the background. The button could be used in Class 20-5 for the cherub, in Class 20-22.2 for the Non-Human Transportation, or in Class 20-12 as a marine scene.

Minerva can be used in Class 20-15-1, in Class 20-10 as a head, and in Class 20-23 as a woman. Here she appears as stamped brass on a wood button with cut steels on the border.

The brass button with the irregular border depicts Blondel reclining against a tree as he plays for imprisoned Richard I. The button can be used as a musician and as a story button. This button features a twinkle background visible through the castle windows.

The Tempest sprite Ariel appears on the dark original tint button with stamped pewter over a dark background. The lower third of the button is a white metal twinkle background depicting water. This button can be used in Class 20-21 for Shakespeare's play, in Class 20-9 for the sprite.

Brandon appears on a button with a twinkle border, and can be used both as a man and as representing the story by Edwin Gaskoden.

Sarah Bernhardt as L'Aiglon (Little Eaglet) can be used in Class 20-23 as a woman and in Class 20-21 for the play by Edmund Rostand and Class 20-10 as a head. This tinned brass button features paste and red glass OME, and a beautiful eagle border.

The little brass button of the bird on the wall can be used in Class 17-2 for the bird or Class 20-1 for the wall.



BUTTON BONANZA

Western Regional Button Association
Sept 30—Oct 3, 2015

WEDNESDAY, September 30

4 pm WRBA BOARD MEETING

6 pm EARLY REFRESH & REGISTER

"No Host" Gathering at the lobby bar. Come sit-a-spell with yer ole pardners, order a refreshing beverage, swap button stories and tall tales, then collect yer wits and registration before moseying on up to the Early Bird Presentation

7:30 pm EARLY BIRD PRESENTATION

8 pm ONE-CARD BUTTON SALES

Anyone registered to attend the show can bring up to ONE card of buttons to sell. Decorate your card with the show theme to make it fun! Don' forget to bring change to help complete those transactions!

THURSDAY, October 1

8—9am REGISTRATION OPEN

8—9am TRAY CHECK IN





9am-5pm JUDGING

6-7pm PREPARE FOR THE ROUNDUP

"No Host" Join a gathering at the lobby bar. Sit-a-spell with yer ole pardners, order a refreshing beverage, swap judging tales, then collect yer money before mobbing the dealers!

7:00 pm FRENCH TIGHT TOPS by Yessy Byl

7:45-10pm SHOW ROOM OPEN Sales & Exhibits

FRIDAY, October 2

9am TRAY & JUDGING DISCUSSION
led by Barb & Tom Barrans

10am—3pm REGISTRATION OPEN

10am—5pm SHOW ROOM OPEN

6:30pm DESSERT RECEPTION

**7:00pm FRENCH ARTIST / DESIGNER
BUTTONS**

by Deb Hanson and Jane Quimby

8:00pm WRBA AUCTION

SATURDAY, October 3

**8:30am WRBA MEMBERSHIP
MEETING & AWARDS BREAKFAST**
includes the Show Favor Button

10am—1pm REGISTRATION OPEN

10am—4pm SHOW ROOM OPEN

4pm COMPETITIVE TRAY PICK UP

10:00 am WRBA BOARD MEETING



BUTTON BONANZA MORE TO DO WHILE YOU ARE IN RENO!!!

In addition to the fantastic WRBA 2015 button gathering, Reno offers plenty of other interesting temptations. The hotel has a wonderful spa to soothe mind, body and spirit. And a free concert is held on the hotel plaza every Friday and Saturday night.

In addition to the free shuttle to the hotel from the airport, Reno offers free bus transportation every ten minutes from 7am to 9pm every day. Learn more at www.rtcwashoe.com. Consider visiting these local attractions served by the free bus:

WILBUR D. MAY MUSEUM & GARDENS www.visitrenotahoe.com
His collection includes Tang Dynasty pottery, African masks, statues and artwork, Inuit scrimshaw, Egyptian scarab figures, Greek icons, wildlife dioramas and a shrunken head from South America. Also a re-creation of his living room, bedroom, tack room and game trophy room from his 2600 acre Double Diamond Ranch in South Reno. Beautiful twelve-acre gardens open free sunrise to sunset.

HOT AIR BALLOON RIDES Contact Don Biggie dbgb@charter.net

NATIONAL AUTOMOBILE MUSEUM www.automuseum.org

Time, culture, beauty, history, human invention, ingenuity and frivolity merge to fascinate. One of the top ten US auto museums.

TRUCKEE RIVER ARTS DISTRICT BOUTIQUE SHOPPING & DINING
Specialty shops, antique stores, galleries, and culinary delights.

NEVADA HISTORICAL SOCIETY

From prehistoric peoples to the changes wrought by white settlers, including the two biggest economic endeavors: mining & gambling.

NEVADA MUSEUM OF ART www.nevadaart.org

Founded in 1931, featuring visual arts activities, exhibitions, and the collection of Charles F. Cutts.

And, don't forget that Reno hugs the beautiful Sierra Nevada with opportunities for golf, mountain biking, hiking, rock climbing, zip-lining, kayaking, rafting, fishing and lake cruises. If you venture out of Reno, consider visiting:

LAKE TAHOE and the adjacent scenic highlands.

FALLON NAVAL AIR STATION TOURS Home of the Top Gun School and they offer half day and full day tours.

VIRGINIA CITY TOURS www.virginiacity-nv.org. Mansions and gold mining operations whose wealth built San Francisco.

ONE-CARD BUTTON SALES ON WEDNESDAY

Don't sleep through this opportunity! Join us Wednesday, September 30, for our always popular ONE-CARD BUTTON SALES.

WRBA does not have "in room sales" so this is an opportunity for ANY person registered for the WRBA show to sell buttons.

Decorate your sales cards with the show theme to make it that much more fun! Y'all wear your plaid flannel shirts, red bandanas, chaps and cowboy boots so that you fit right in with the rest of the ranchers, miners, farmers, squatters, outlaws and rustlers who will also be attending!

And, remember to bring cash for buying buttons and making change!



SHIPPING BUTTON TRAYS TO WRBA 2015

If you are unable to attend WRBA 2015, but wish to compete, you are welcome to send trays. It is a requirement that you be a current WRBA member to compete.

To insure the safety of the trays you send, DO NOT mail the button trays to the hotel. We recommend two alternatives.

1) Locate another WRBA member or friend who is attending WRBA, and mail your trays to them for their safe transport to and from the show. 2) You can ship trays to Gil and Don Biggie in Reno, and they will drop them off at the hotel prior to the start of judging.

Ship to: Gil Biggie, 9075 Wigwam Way, Reno NV 89506

Gil suggests that you ship by FedEx. Don't seal the box until you get there. Purchase a return "ship to" label at same time you ship the button trays. Package the "return shipping label" INSIDE the box with the trays, and it will be used to return your buttons. Now seal your box and send it.

Gil reminds you to pad your buttons extremely well, and consider double boxing the package.



BUTTON BONANZA

CALL FOR AUCTION DONATIONS

Once again we will have a fundraising auction at the WRBA 2015 gathering in Reno. Please plan to donate generously.

Chris McCarthy of Washington will be coordinating our fundraising efforts. You can contact Chris at pielady48@gmail.com.



CALL FOR REGISTRATION VOLUNTEERS

We need volunteers to help at the Registration Table during the show. Registration volunteers are one of the most important positions to WRBA. When visitors and potential collectors take the time to come to a button show, Registration is their first contact with the organized hobby. A friendly, helpful greeting can be the catalyst to transition a person's interest into an engaging hobby!

Please send an email to Joy Journeay joyjourneay@gmail.com and let her know if you can sign up for a one or two-hour session.

CALL FOR JUDGING VOLUNTEERS

If you are willing to help JUDGE, CLERK, RUN, or assist in any way on Thursday, please contact the Chair of Judges, Barb Barrans. You can also check the appropriate box(es) that will be on your show registration form, so don't forget.

darbysbarb@aol.com
559 683-6418
P O Box 2556,
Oakhurst CA 93644



BUTTON EVENTS CALENDAR

DADGUM BUTTON SHOW: Annual Regional Button Show

Sponsored by The Columbia Button Club and Button Central

Theme: "Bigfoot & Buttons"

When: August 29, 2015 10 AM to 5 PM

Where: Columbia State Park

Angelos Hall on State Street Columbia, CA 95310

Spend the day exploring the Legend of Bigfoot and get your Squatch-on with Bigfoot Button displays, artifacts and stories from locals who swear they've seen the hairy critter. Have your picture taken with Bigfoot...he doesn't bite, but we recommend that you count your fingers on the way out and did we mention there will be lots of Antique & Modern Buttons for sale!

For more info contact: Clare Bazley

at Columbia Kate's Teahouse: (209)532-1885

WASHINGTON STATE 2015 BUTTON SHOW

When: September 11-12, 2015

Where: Medallion Hotel

Arlington, Wash. 98223

For more information, Dale Parkhurst at dalep@gohuskies.com,

(206) 365-3765 or visit our website at

www.WashingtonStateButtonSociety.com.

COLORADO STATE BUTTON SOCIETY WORKSHOPS

When: October 17, 2015

Where: Doubletree@Hilton, 3203 Quebec Street

Denver CO 80207 (303) 329-5243

For more info contact: Jennifer Hulac (303) 331-0131

When: February 27, 2016

Where: Doubletree@Hilton, 3203 Quebec Street

Denver CO 80207 (303) 329-5243

For more info contact: Lewis Lombardi (303) 665-2388

COLORADO STATE BUTTON SOCIETY ANNUAL SHOW

When: April 1-3, 2016

Where: Doubletree@Hilton, Denver (see above)

For more info contact: Jennifer Hulac (303) 331-0131

W.R.B.A. TO HOST N.B.S. 2016 IN DENVER

The WRBA Board was pleased to accept the opportunity to host the National Button Society convention in 2016 in Denver, Colorado.

As WRBA members, all of us can participate and help to make this a successful and memorable National convention.

If you are willing to help in any way, or have any ideas on ways to contribute or improve the event, please share those ideas with Joy Journeyneay (joyjourneay@gmail.com) or call (907) 223-1040.

WRBA is very fortunate that the Colorado State Button Society has volunteered to coordinate the publicity, tours, registration, and hotel liaison duties. If you are willing to volunteer and help in any of these capacities, contact Harriett Brittenham (brittmh@aol.com). Colorado hosted the National convention recently and this team of volunteers is experienced, organized and enthused!

Bruce Beck and Gil Biggie will lead fundraising efforts before and during the 2016 convention. Both have proven multiple times to be exceptionally gifted at fundraising. Plan to donate generously—and often—to the opportunities they present this coming year.

Judy Schwenk and Jim Nolan are leading the Washington State Button Society team, and have solicited and contracted for the 2016 show buttons. They will be producing the button presentation design as well. We can't wait for the surprise buttons to be unveiled!

Once the national convention is over next month, we expect that all WRBA members will hit the ground running as we work towards next year's gathering.

Don't be left out of the opportunities to serve with the WRBA teams. Give us a shout if you want to be included!

*Joy Journeyneay
WRBA Show Manager for
NBS 2016*

A special "THANK YOU!" to Jim Nolan for sharing the miner with jewels featured on the NBS Invitation!

