

*I Termoarredatori Tesi rappresentano il sistema più funzionale, modulare ed elegante per il riscaldamento di tutti gli ambienti. Grazie alle forme arrotondate, che riducono al minimo il rischio di incidenti, possono essere inseriti anche in locali pubblici, enti, scuole ed ospedali. Tesi2 ha una profondità di 65 mm e altezze da 200 ai 2500 mm.*



Tesi 2, 15 elementi, altezza 2200 mm, larghezza 675 mm, Rosso - RAL 3000

## Caratteristiche costruttive

- tubi in lamiera d'acciaio di diametro 25 mm
- collettori in lamiera d'acciaio stampati
- lunghezza elementi 45 mm (passo del singolo elemento)
- filettature estremità collettore sup. e inf. 1"1/4 G dx o sx
- pressione di esercizio massima ammessa 8 bar
- temperatura di esercizio massima ammessa 95°C
- lunghezza radiatore con tappi montati: (N° elem. x 45) + 24 mm
- misura dell'interasse valvola Irsap pari a 41÷44 mm
- misura dell'interasse detentore Irsap pari a 41÷44 mm

## Certificazioni



## Plus



## Dati tecnici

Modello	Profondità (mm)	Altezza (mm)	Interasse (mm)	Peso (kg)	Capacità (lt)	$\Delta t=50^{\circ}\text{C}$ (kcal/h)	$\Delta t=50^{\circ}\text{C}$ (Watt)	$\Delta t=40^{\circ}\text{C}$ (Watt)	$\Delta t=30^{\circ}\text{C}$ (Watt)	$\Delta t=20^{\circ}\text{C}$ (Watt)	Esponente
200	65,0	200	127	0,30	0,30	12,8	14,9	11,3	7,9	4,7	1,250
300	65,0	300	235	0,50	0,40	20,2	23,4	17,8	12,4	7,5	1,240
400	65,0	400	335	0,60	0,50	25,9	30,1	22,8	15,9	9,6	1,250
500	65,0	500	435	0,70	0,60	31,5	36,6	27,7	19,3	11,6	1,250
600	65,0	600	535	0,80	0,70	37,1	43,1	32,6	22,6	13,6	1,260
750	65,0	750	685	1,00	0,80	45,5	52,9	39,8	27,6	16,4	1,270
900	65,0	900	835	1,20	0,90	53,9	62,7	47,0	32,5	19,3	1,290
1000	65,0	1000	935	1,40	1,00	59,5	69,2	51,9	35,7	21,1	1,290
1200	65,0	1200	1135	1,60	1,10	71,0	82,5	61,6	42,3	24,9	1,310
1500	65,0	1500	1435	2,00	1,40	88,6	103,0	76,5	52,1	30,4	1,330
1800	65,0	1800	1735	2,41	1,64	106,9	124,3	92,4	63,0	36,8	1,330
2000	65,0	2000	1935	2,67	1,80	119,5	139,0	103,6	70,9	41,5	1,320
2200	65,0	2200	2135	2,93	1,97	132,6	154,2	115,1	79,0	46,5	1,310
2500	65,0	2500	2435	3,30	2,20	152,9	177,8	133,2	91,8	54,4	1,290

Grazie alle elevate prestazioni dei radiatori Tesi2, il  $\Delta t$  ideale per la progettazione a bassa temperatura è  $30^{\circ}\text{C}$

Per  $\Delta t$  diversi da  $50^{\circ}\text{C}$  utilizzare la formula:  $Q=Q_n (\Delta t / 50)^n$

A partire dalle vendite dell'anno 2010, tutta la gamma dei radiatori TESI è garantita 10 anni.

## Rese a batteria

Lunghezza (mm)	N° Elementi	200	300	400	500	600	750	900	1000	1200	1500	1800	2000	2200	2500
90	2	Watt = 30	47	60	73	86	106	125	138	165	206	249	278	308	356
135	3	Watt = 45	70	90	110	129	159	188	208	248	309	373	417	462	533
180	4	Watt = 60	94	120	147	173	212	251	277	330	412	497	556	617	711
225	5	Watt = 75	117	150	183	216	264	313	346	413	515	621	695	771	889
270	6	Watt = 89	141	181	220	259	317	376	415	495	618	746	834	925	1067
315	7	Watt = 104	164	211	257	302	370	439	485	578	721	870	973	1079	1245
360	8	Watt = 119	188	241	293	345	423	501	554	660	824	994	1112	1233	1422
405	9	Watt = 134	211	271	330	388	476	564	623	743	927	1119	1251	1387	1600
450	10	Watt = 149	234	301	366	432	529	627	692	825	1030	1243	1390	1542	1778
495	11	Watt = 164	258	331	403	475	582	689	761	908	1133	1367	1529	1696	1956
540	12	Watt = 179	281	361	440	518	635	752	831	990	1236	1491	1668	1850	2133
585	13	Watt = 194	305	391	476	561	687	815	900	1073	1339	1616	1807	2004	2311
630	14	Watt = 209	328	421	513	604	740	877	969	1155	1442	1740	1946	2158	2489
675	15	Watt = 224	352	452	550	647	793	940	1038	1238	1545	1864	2085	2312	2667
720	16	Watt = 239	375	482	586	690	846	1003	1108	1320	1648	1989	2224	2466	2845
765	17	Watt = 253	398	512	623	734	899	1065	1177	1403	1751	2113	2363	2621	3022
810	18	Watt = 268	422	542	660	777	952	1128	1246	1485	1854	2237	2502	2775	3200
855	19	Watt = 283	445	572	696	820	1005	1191	1315	1568	1957	2362	2641		
900	20	Watt = 298	469	602	733	863	1058	1253	1384	1650	2060	2486	2780		
945	21	Watt = 313	492	632	770	906	1110	1316	1454	1733	2163	2610	2919		
990	22	Watt = 328	516	662	806	949	1163	1379	1523	1815	2266	2734	3058		
1035	23	Watt = 343	539	692	843	992	1216	1441	1592	1898	2369				
1080	24	Watt = 358	563	722	880	1036	1269	1504	1661	1980	2472				
1125	25	Watt = 373	586	752	916	1079	1322	1566	1730	2063	2575				
1170	26	Watt = 388	609	783	953	1122	1375	1629	1800	2145	2678				
1215	27	Watt = 403	633	813	990	1165	1428	1692	1869	2228					
1260	28	Watt = 417	656	843	1026	1208	1481	1754	1938	2310					
1305	29	Watt = 432	680	873	1063	1251	1534	1817	2007	2393					
1350	30	Watt = 447	703	903	1100	1294	1586	1880	2077	2475					
1395	31	Watt = 462	727	933	1136	1338	1639	1942	2146						

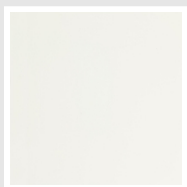
---

1440	32	Watt = 477	750	963	1173	1381	1692	2005	2215
1485	33	Watt = 492	774	993	1209	1424	1745	2068	2284
1530	34	Watt = 507	797	1023	1246	1467	1798	2130	2353
1575	35	Watt = 522	820	1054	1283	1510	1851	2193	2423
1620	36	Watt = 537	844	1084	1319	1553	1904	2256	2492
1665	37	Watt = 552	867	1114	1356	1597	1957	2318	2561
1710	38	Watt = 567	891	1144	1393	1640	2009	2381	2630
1755	39	Watt = 581	914	1174	1429	1683	2062	2444	2700
1800	40	Watt = 596	938	1204	1466	1726	2115	2506	2769

---

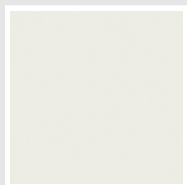
## Colori e finiture

### STANDARD

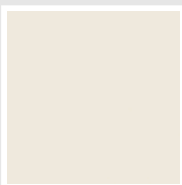


Bianco Standard  
Cod. 01

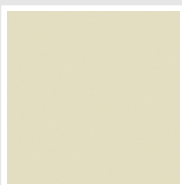
### CLASSIC



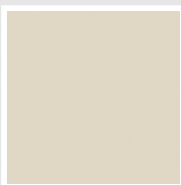
Bianco Edelweiss  
Opaco  
Cod. 34



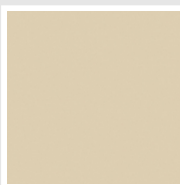
Bianco Whisper  
Peach  
Cod. 36



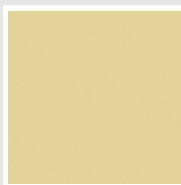
Avorio - RAL 1013  
Cod. 02



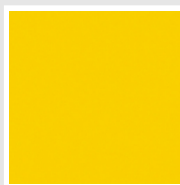
Jasmin Opaco  
Cod. 35



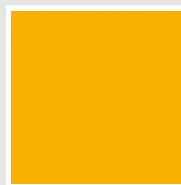
Beige Naturale  
Cod. 38



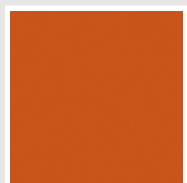
Beige Cream  
Cod. 26



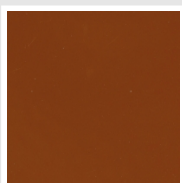
Giallo - RAL 1021  
Cod. 04



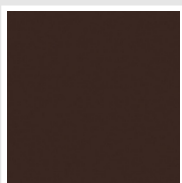
Giallo Melone - RAL  
1028  
Cod. E7



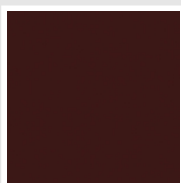
Arancio - RAL 2004  
Cod. 17



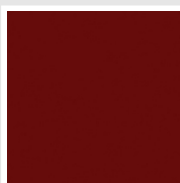
Marrone Ruggine -  
RAL 8004  
Cod. E1



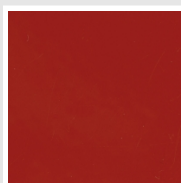
Marrone - RAL 8017  
Cod. 09



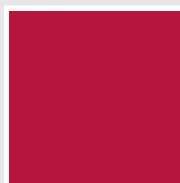
Vinaccia - RAL 3005  
Cod. H9



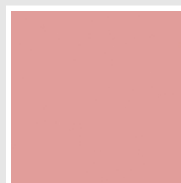
Amaranto - RAL 3003  
Cod. 06



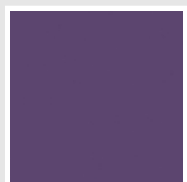
Rosso - RAL 3000  
Cod. 05



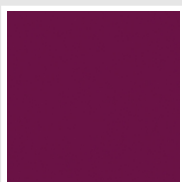
Rosso Fragola - RAL  
3018  
Cod. Y3



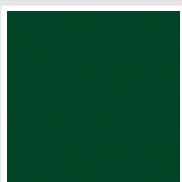
Rosa - RAL 3015  
Cod. R2



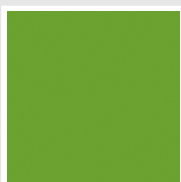
Lilla Bluastro - RAL  
4005  
Cod. R3



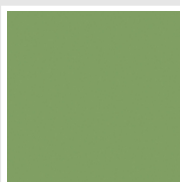
Porpora Traffico -  
RAL 4006  
Cod. R6



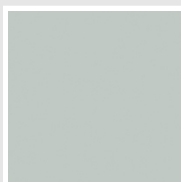
Verde Bosco - RAL  
6005  
Cod. 19



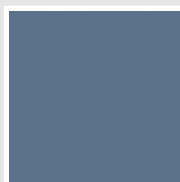
Verde Erba - RAL  
6018  
Cod. N3



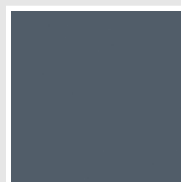
Verde Salvia - RAL  
6021  
Cod. E6



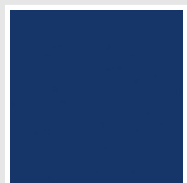
Verde Greenwich  
Cod. 28



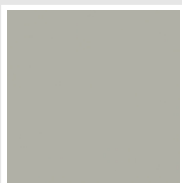
Blu Pastello - RAL  
5024  
Cod. G7



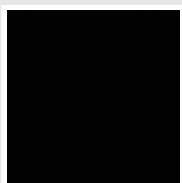
Blu Colomba - RAL  
5014  
Cod. G9



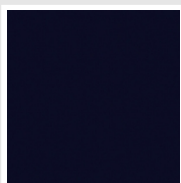
Blu Hewi  
Cod. 11



Grigio Manhattan  
Cod. 03

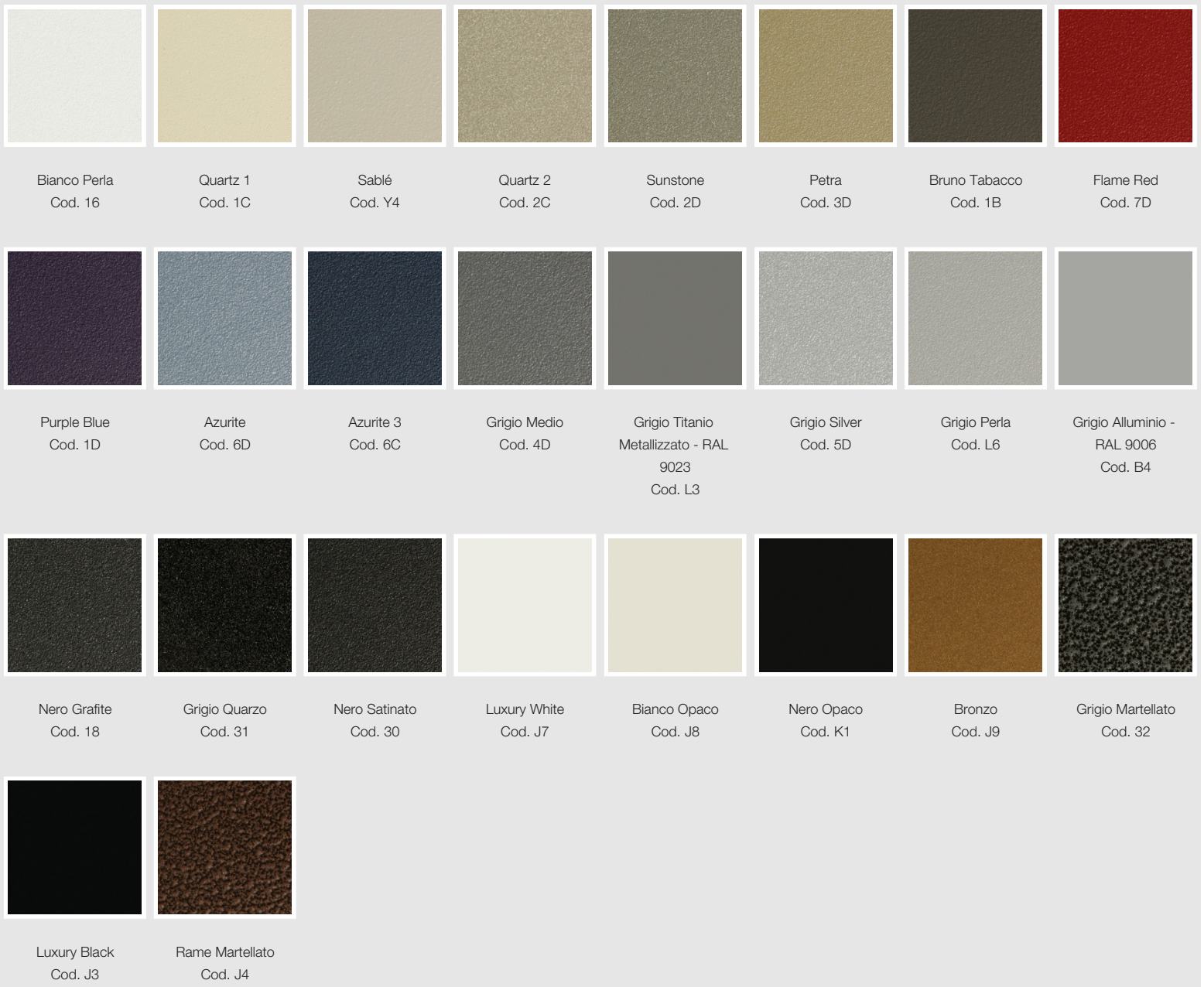


Nero - RAL 9005  
Cod. 10



Deep Blue  
Cod. 2F

### SPECIAL



## SURFACES



I colori rappresentati in questa cartella non sono da considerarsi impegnativi. I diversi processi tecnologici di verniciatura ed i materiali utilizzati per la realizzazione possono non avere una perfetta corrispondenza cromatica con il prodotto consegnato. L'azienda Irsap si riserva la facoltà di apportare in qualsiasi momento tutte le modifiche necessarie per il miglioramento del prodotto.