

American National Standard

*Test Procedure and Acceptance Criteria for —
Factory Applied Finish Coatings
for Steel Doors and Frames*



SPONSOR
Steel Door Institute

Approved February 12, 2007



This page left intentionally blank.

ANSI/SDI®
A250.3-2007 (R2011)
Revision of
ANSI/SDI A250.3-1999

American National Standard

Test Procedure and Acceptance Criteria for
Factory Applied Finish Coatings
for Steel Doors and Frames

Secretariat

Steel Door Institute

Approved February 12, 2007

American National Standards Institute, Inc.

This page left intentionally blank.

American National Standard

Approval of an American National Standard requires verification by ANSI that the requirements for due process, consensus, and other criteria for approval have been met by the standards developer.

Consensus is established when, in the judgement of the ANSI Board of Standards Review, substantial agreement has been reached by directly and materially affected interests. Substantial agreement means much more than a simple majority, but not necessarily unanimity. Consensus requires that all views and objections be considered, and that a concerted effort be made toward their resolution.

The use of American National Standards is completely voluntary; their existence does not in any respect preclude anyone, whether they have approved the standards or not, from manufacturing, marketing, purchasing, or using products, processes, or procedures not conforming to the standards.

The American National Standards Institute does not develop standards and will in no circumstances give any interpretation of any American National Standard. Moreover, no person shall have the right or authority to issue an interpretation of an American National Standard in the name of the American National Standards Institute. Requests for interpretations should be addressed to the secretariat or sponsor whose name appears on the title page of this standard.

CAUTION NOTICE: This American National Standard may be revised or withdrawn at any time. The procedures of the American National Standards Institute require that action be taken periodically to reaffirm, revise, or withdraw this standard. Purchasers of American National Standards may receive current information on all standards by calling or writing the American National Standards Institute.

Published by

Steel Door Institute
30200 Detroit Road, Cleveland, Ohio 44145-1967

Copyright © 2012 by Steel Door Institute
All rights reserved.

No part of this publication may be reproduced in any form, in an electronic retrieval system or otherwise, without prior written permission of the publisher.

Printed in the United States of America

ANSI/SDI A250.3-2007

Contents

	Page
Foreword	ii
1 General	1
1.1 Scope	1
1.2 Reference Documents	1
2 Material.....	1
3 Testing	2
3.1 Salt spray test.....	2
3.2 Condensation testing (humidity).....	2
3.3 Accelerated weathering test	2
3.4 Impact test.....	2
3.5 Film adhesion test.....	2
3.6 Abrasion test.....	2
4 Acceptance criteria	2
4.1 Salt spray resistance	2
4.2 Condensation resistance	3
4.3 Accelerated weathering resistance	3
4.4 Impact test.....	3
4.5 Film adhesion.....	3
4.6 Abrasion resistance	3
5 Report.....	3
6 General	3
6.1 Testing laboratory.....	3
6.2 Certification.....	3
Tables	
1 Rust grades	4
2 Classification of adhesive test results	8
Figures	
1 Visual reference for percentage of rust.....	4
2 Blister size #2	5
3 Blister size #4	5
4 Blister size #6	6
5 Blister size #8	6
6 Photographic reference standard for degree of chalking	7

Foreword (This Foreword is not part of American National Standard A250.3-2007)

The material contained in this document has been developed under the auspices of the Technical Committee of the Steel Door Institute.

The original standard was issued on July 28, 1980 and was last revised in 1999. The current edition is a revision of the 1999 document with the contents being updated to reflect changes and advances that have taken place in the steel door and frame industry since that time.

Suggestions for improvement gained in the use of this standard will be welcome. They should be sent to the Steel Door Institute, 30200 Detroit Road, Cleveland, Ohio 44145-1967.

The organizations that have approved this standard are as follows:

American Institute of Architects
Builders Hardware Manufacturers' Association
Canadian Steel Door Manufacturers' Association
Door and Hardware Institute
FM Approvals
General Services Administration
Hollow Metal Manufacturers' Association / Division of National Association
of Architectural Metal Manufacturers' Association
International Conference of Building Officials
Intertek Testing Services
Manufactured Housing Institute
National Association of Home Builders
Steel Door Institute
Underwriters Laboratories Inc.
Window and Door Manufacturers' Association

The Accredited Standards Committee A250 TC-1 developed this standard and had the following personnel at the time of approval:

Robert M. Berhinig, Chairman
 J. Jeffery Wherry, Secretary

<i>Organization Represented</i>	<i>Name of Representative</i>
American Institute of Architects	Joseph Berchenko
Anweld Building Products LLC	Mike Kolovich
Benchmark Commercial Doors	TBD
Builders Hardware Manufacturers' Association	Mike Tierney
Canadian Steel Door Manufacturers' Association	Bud Bulley
Ceco Door Products.....	Thomas R. Janicak
Curries Company	Dave Dedic
Deansteel Manufacturing Company.....	Claus D. Heide
Door and Hardware Institute	John Geniesse
FM Approvals	Mark Tyrol
General Services Administration	Stuart Palmer
Hollow Metal Manufacturers' Association / Division of National Association of Architectural Metal Manufacturers	Russell Tauscher
Ingersoll-Rand	Kurt Roeper
International Conference of Building Officials	Paul Armstrong
Intertek Testing Services	Nancy Kokesh
The Kewanee Corporation.....	Fred L. Pipin
Manufactured Housing Institute	Mark Nunn
Mesker Door, Inc.	Mike Torres
National Association of Home Builders.....	Jeff Inks
Pioneer Industries.....	Mitchell Dorf
Republic	Jason Lisewski
Security Metal Products Corporation.....	Daniel Buffenbarger
Steel Door Institute.....	J. Jeffery Wherry
Underwriters Laboratories Inc.	Matthew Schumann
Window & Door Manufacturers' Association.....	Rick Perry
General Interest Representatives	Allan Ashachik Stan L. Horsfall

American National Standard

Test Procedure and Acceptance Criteria for — Factory Applied Finish Coatings for Steel Doors and Frames

1 General

1.1 Scope

These methods prescribe the procedures to be followed in the selection of material, chemical preparation, coating application, testing, and evaluation of factory applied finish coatings for steel doors and frames. Coatings covered by this standard include paints, stains, clear coats, and powder coats.

1.2 Reference Documents

ASTM B117-03, "Standard Practice for Operating Salt Spray (Fog) Testing Apparatus,"

ASTM D1654-92, "Standard Test Method for Evaluation of Painted or Coated Specimens Subjected to Corrosive Environments"

ASTM D4585-99, "Standard Practice for Testing Water Resistance of Coatings Using Controlled Condensation."

ASTM G154-04, "Standard Practice for Operating Fluorescent Light Apparatus for UV Exposure of Nonmetallic Materials."

ASTM D4587-01, "Standard Practice for Fluorescent UV-Condensation Exposures of Paint and Related Coatings."

ASTM D2794-93(2004), "Standard Test Method for Resistance of Organic Coatings to the Effects of Rapid Deformation (Impact)."

ASTM D3359-02, "Standard Test Method for Measuring Adhesion by the Tape Test."

ASTM D4060-01, "Standard Test Method for Abrasion Resistance of Organic Coatings by the Taber Abraser."

ASTM D610-01, "Standard Test Method for Evaluating Degree of Rusting on Painted Steel Surfaces."

ASTM D714-02, "Standard Test Method for Evaluating Degree of Blistering of Paints."

ASTM D4214-98, "Standard Test Method for Evaluating Degree of Chalking of Exterior Paint Films."

ASTM D523-89(1999), "Standard Test Method for Specular Gloss."

ASTM D2244-02e1, "Standard Practice for Calculation of Color Tolerances and Color Differences from Instrumentally Measured Color Coordinates."

2 Material

2.1 The test specimen shall be the exact type and gauge of steel as used in the manufacture of the product. The specimen shall be a minimum of 4" (102 mm) × 6" (152 mm) with a ¼" (6.4 mm) hole at the center of the 4" (102 mm) width, ½" (12.7 mm) in from the end. Identification marks shall be added to the specimen as required for control purposes. The test specimen shall be handled at all stages of the process with clean gloves to prevent contamination.

2.2 The specimen(s) shall be hung using a method representative of that used in production.

2.3 The test specimen(s) shall be cleaned, pretreated and coated in accordance with the manufacturers normal production method and procedure. All coating weights used on test specimens shall be documented and representative of the individual manufacturer's normal production material.

2.4 At the end of the coating cycle, the specimen(s) shall be removed from the coating system and handled carefully. The coated surface of the specimen shall not be handled

or come in contact with other objects in such a way as to disrupt the coated surface.

2.5 Specimens shall be allowed to age at an ambient room temperature, for a minimum 72 hour duration, before any testing commences.

3 Testing

3.1 Salt spray test

a) *Apparatus* – The apparatus used for salt spray testing shall be of such design as to conform to ASTM B117-03, “Standard Practice for Operating Salt Spray (Fog) Testing Apparatus.”

b) *Test performance* – Salt spray testing shall be conducted as specified in ASTM B117-03, “Standard Practice for Operating Salt Spray (Fog) Testing Apparatus,” for a test period of 120 continuous hours. The test specimen shall be scribed with an “X” per ASTM D1654-92, “Standard Test Method for Evaluation of Painted or Coated Specimens Subjected to Corrosive Environments”, sections 4.1 and 5.1.

3.2 Condensation testing (humidity)

a) *Apparatus* – The apparatus used for condensation (humidity) testing shall be of such design as to conform to ASTM D4585-99, “Standard Practice for Testing Water Resistance of Coatings Using Controlled Condensation.”

b) *Test performance* – Condensation (humidity) testing shall be conducted as specified in ASTM D4585-99, “Standard Practice for Testing Water Resistance of Coatings Using Controlled Condensation,” for a test period of 480 continuous hours. Exposure temperatures shall be maintained at a minimum of 100°F (38°C). Actual test temperature shall be noted in the report.

3.3 Accelerated weathering test

a) *Apparatus* – The apparatus used for accelerated weathering testing shall be of such design as to conform to ASTM G154-04, “Standard Practice for Operating Fluorescent Light Apparatus for UV Exposure of Nonmetallic Materials.” The bulb type used shall be a UVA340.

b) *Test performance* – Accelerated weathering testing shall be conducted as specified in ASTM D4587-01, “Standard Practice for Fluorescent

UV-Condensation Exposures of Paint and Related Coatings” For a test period of 300 hours duration. The cycle schedule for operating this type of equipment shall be 18 hours of light exposure at 140°F (60°C) followed by a 6 hour condensation cycle at 120°F (49°C).

3.4 Impact test

The coating shall be tested per ASTM D2794-93(2004), “Standard Test Method for Resistance of Organic Coatings to the Effects of Rapid Deformation (Impact),” with 20 inch pounds of direct impact using a Gardner Impact Tester with a ½" (12.7 mm) diameter ball or punch at room temperature of 70°-75°F (21°C-24°C). The test specimen shall be impacted at three locations on the panel that have a dry film thickness within the tolerance range for the coating process. Apply one-inch (25.4 mm) wide, #600 Scotch cellophane pressure-sensitive tape firmly to the impact area and pull off sharply.

3.5 Film adhesion test

The coating film adhesion shall be tested in accordance with method “B” of ASTM D3359-02, “Standard Test Method for Measuring Adhesion by the Tape Test.” A total of (11) parallel cuts are made with a sharp instrument, 0.039" (1 mm) apart in both a vertical and horizontal direction forming a grid. One-inch (25.4 mm) wide #600 Scotch cellophane pressure-sensitive tape is then firmly applied to the scribed surface and rapidly removed.

3.6 Abrasion test

The coating film shall be tested with a Taber Abraser Testing Apparatus using a No. CS-10 Resilient Calibrase Wheel in accordance with ASTM D4060-01, “Standard Test Method for Abrasion Resistance of Organic Coatings by the Taber Abraser.”

4 Acceptance criteria

4.1 Salt spray resistance

The coating film on the unscored surface of the test specimen shall have a rust grade of no less than 6 as defined in ASTM D610-01, “Standard Test Method for Evaluating Degree of Rusting on Painted Steel Surfaces.” Table 1 and the depictions shown in Figure 1 illustrate the scale used to evaluate the rust grades. The coating film at the scribe line shall not be undercut by rust more than ⅛" (3.2 mm) or a

6 on each side of the scribe line when evaluated in accordance with ASTM D1654-92 and rated per ASTM D1654-92, Table 1. "Rating of Failure at Scribe (Procedure A)".

4.2 Condensation resistance

The coating film shall be allowed to exhibit the dense pattern of #8 blisters, but shall have no more than the "few" pattern of #6 blisters as illustrated in the photographic reference ASTM D714-02, "Standard Test Method for Evaluating Degree of Blistering of Paints." Testing shall be in accordance with Paragraph 3.2. Visual representations of the various degrees of blistering are shown in Figures 2 through 5 of this document.

4.3 Accelerated weathering resistance

When tested in accordance with Paragraph 3.3 herein, the paint film shall exhibit the following traits:

4.3.1 No rust, checking, cracking, erosion or flaking shall be present.

4.3.2 No more than a few #6 blisters as illustrated in Figure 4 and in ASTM D714-02, "Standard Test Method for Evaluating Degree of Blistering of Paint."

4.3.3 A degree of chalking not to exceed #8 as illustrated in Figure 6 and in test method B of ASTM D4214-98, "Standard Test Method for Evaluating Degree of Chalking of Exterior Paint Films."

4.3.4 No more than a 50% decrease in gloss when tested in accordance with ASTM D523-89(1999), "Standard Test Method for Specular Gloss."

4.3.5 No more than a 10% change in color (fade) when tested in accordance with ASTM D2244-02e1, "Standard Practice for Calculation of Color Tolerances and Color Differences from Instrumentally Measured Color Coordinates."

4.4 Impact test

No coating film removal shall occur other than at an area $\frac{1}{8}$ " (3.2 mm) in diameter at the center of the impact area, when tested in accordance with Paragraph 3.4.

4.5 Film adhesion

There shall be no adhesion loss less than a grade 3B as defined in ASTM D3359-02. This

grade represents a film removal of between 5 and 15%. Table 2 on page 8 illustrates the various classifications for adhesion loss.

4.6 Abrasion resistance

The coating film shall have a wear index of 100 (.10 mg weight loss per cycle) or less when tested in accordance with Paragraph 3.6 herein.

5 Report

5.1 The report shall cover the date the test was performed and the issue date of the report.

5.2 Identification of the specimen tested, source of supply, manufacturer, model or series number, or both, and any other pertinent information.

5.3 A detailed description of the specimen or specimens tested shall include the type of prime or barrier coating if used, the method of coating application, the procedure used to cure it and the dry film thickness.

5.4 Any modifications made on the test specimen to obtain the values of acceptance shall be noted and described.

5.5 A statement that the test or tests were conducted in accordance with the methods and procedures as specified herein. If deviations from these methods and procedures were made, they shall be described in the report.

5.6 When the test is made to check the conformance of the unit specimen to test requirements of a particular specification, the identification or description of the specification shall be included in the report.

6 General

6.1 Testing laboratory

All tests shall be conducted and certified by a nationally recognized, independent testing laboratory.

6.2 Certification

When reference is made to this specification the following statement shall be used: "Finish coating has been tested in conformance with ANSI Standard A250.3-2006."

Table 1 – Rust grades

Rust Grade	Maximum % of rusted area
10	00.01
9	00.03
8	00.10
7	00.30
6	01.00
5	03.00
4	10.00
3	16.67
2	33.33
1	50.00
0	100.00

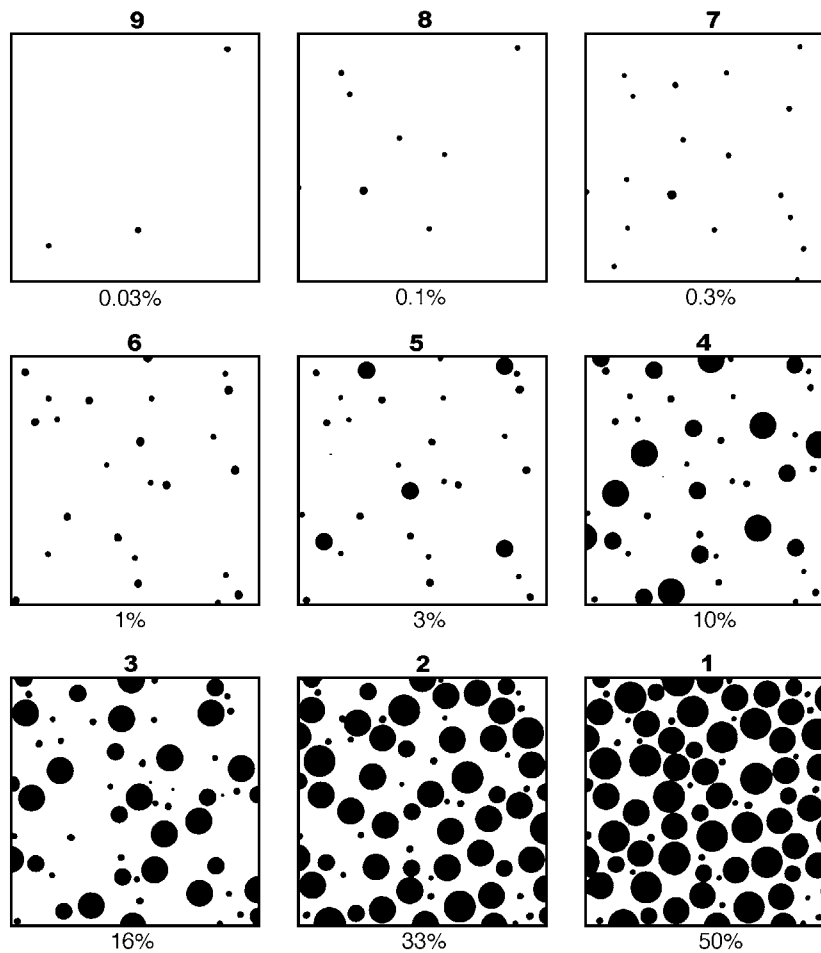
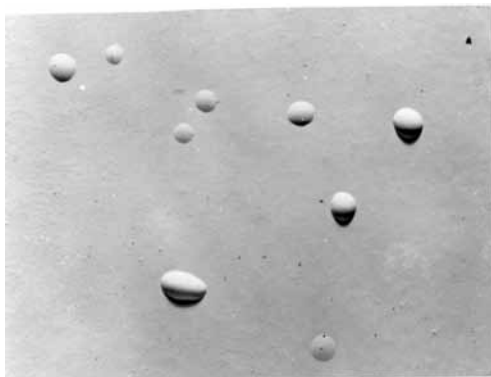
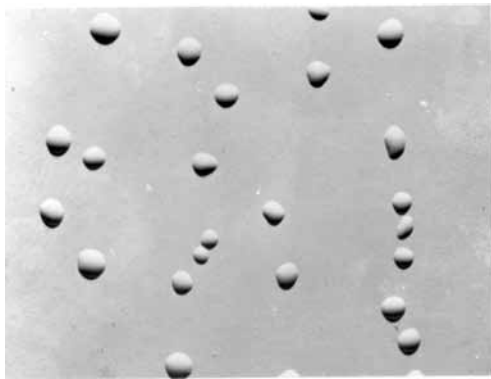


Figure 1 – Visual reference for percentage of rust

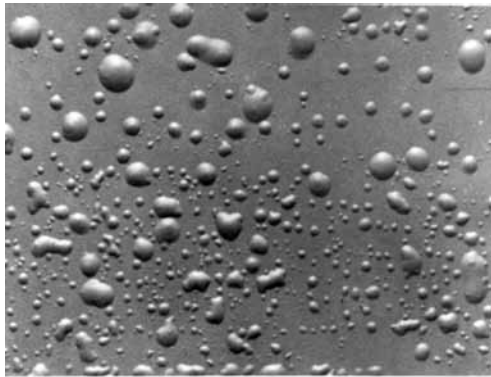
Visual examples illustrating degrees of blistering



FEW



MEDIUM

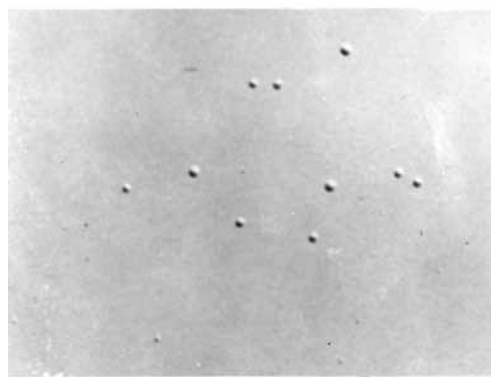


MEDIUM DENSE

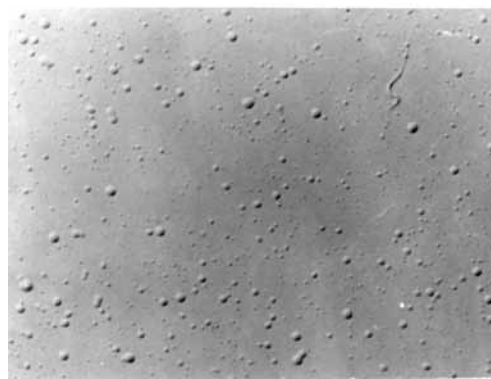


DENSE

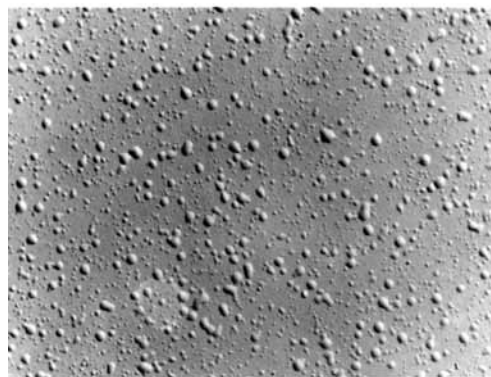
Figure 2 – Blister size #2



FEW



MEDIUM



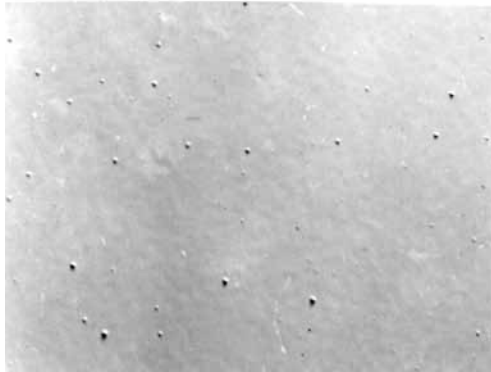
MEDIUM DENSE



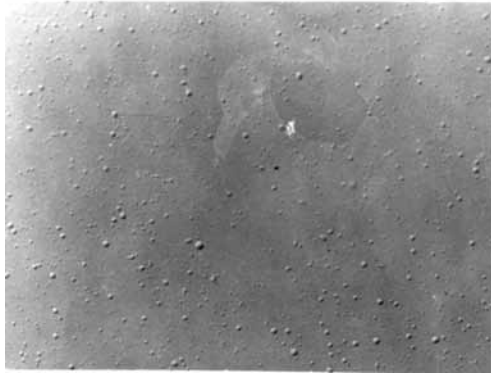
DENSE

Figure 3 – Blister size #4

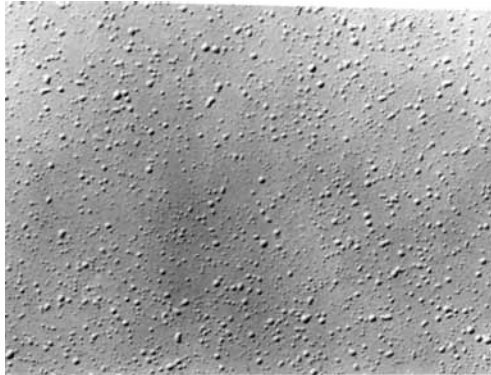
Visual examples illustrating degrees of blistering



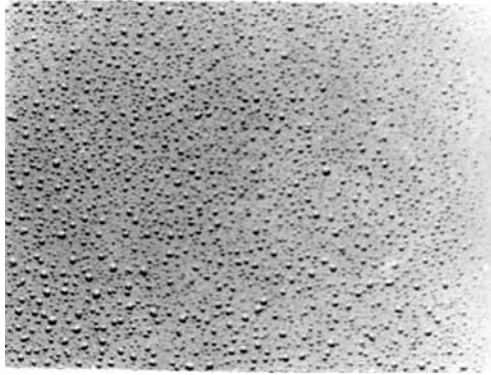
FEW



MEDIUM

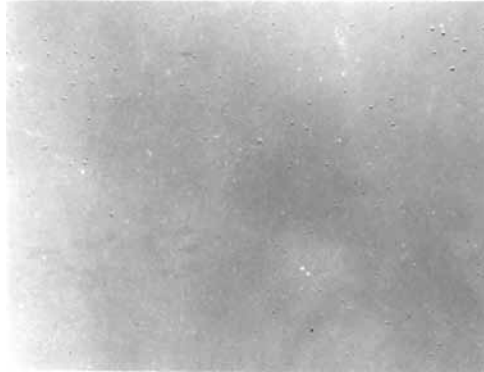


MEDIUM DENSE

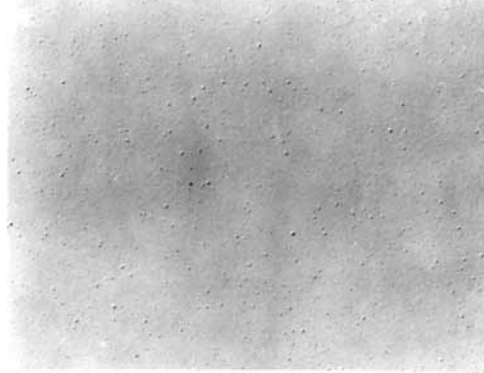


DENSE

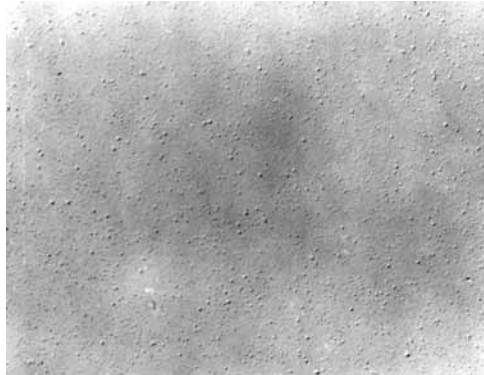
Figure 4 – Blister size #6



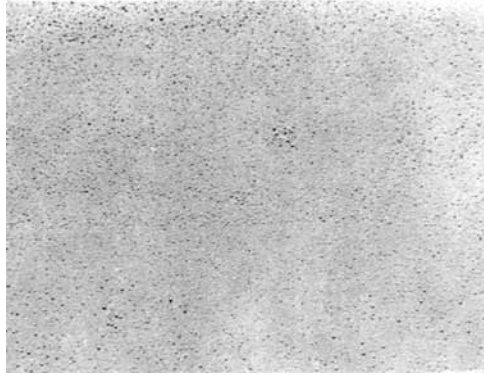
FEW



MEDIUM

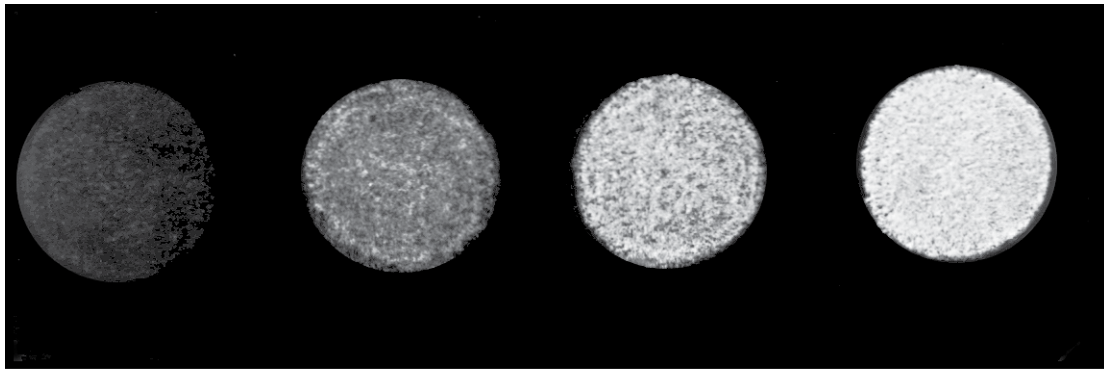


MEDIUM DENSE



DENSE

Figure 5 – Blister size #8



No. 8

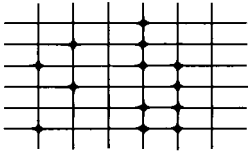
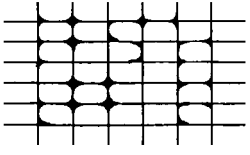
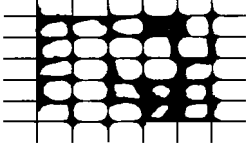

No. 6

No. 4

No. 2

Figure 6 – Photographic reference standard for degree of chalking

Table 2 – Classification of adhesive test results

Classification	Surface of cross-cut areas from which listing has occurred. (Example for six parallel cuts.)	Rate of adhesion
5B	None	The edges of the cuts are completely smooth; none of the squares or the lattice are detached.
4B		Small flakes of coating are detached at intersections; less than 5% of the area is affected.
3B		Small flakes of coating are detached along edges and at intersections of cuts. The area affected is 5 to 15% of the lattice.
2B		The coating has flaked along the edges and at parts of the squares. The affected area is 15 to 35% of the lattice.
1B		The coating has flaked along the edges of cuts in large ribbons and entire squares have detached. The area affected is 35 to 65% of the lattice.
0B	Flaking and detachment in excess of 65%.	

AVAILABLE PUBLICATIONS

Specifications

- ANSI/SDI A250.6** Recommended Practice for Hardware Reinforcings on Standard Steel Doors and Frames
- ANSI/SDI A250.8** SDI 100 Specifications for Standard Steel Doors & Frames
- SDI-108** Recommended Selection & Usage Guide for Standard Steel Doors
- SDI-118** Basic Fire Door, Fire Door Frame, Transom/Sidelight Frame, and Window Frame Requirements
- SDI-128** Guidelines for Acoustical Performance of Standard Steel Doors & Frames
- SDI-129** Hinge & Strike Spacing

Test Procedures

- ANSI/SDI A250.3** Test Procedure & Acceptance Criteria for Factory Applied Finish Coatings for Steel Doors & Frames
- ANSI/SDI A250.4** Test Procedure & Acceptance Criteria for Physical Endurance for Steel Doors, Frames and Frame Anchors
- ANSI/SDI A250.10** Test Procedure & Acceptance Criteria for Prime Painted Steel Surfaces for Steel Doors & Frames
- ANSI/SDI A250.13** Testing and Rating of Severe Windstorm Resistant Components for Swinging Door Assemblies for Protection of Building Envelopes (Not applicable for FEMA 320/361 or ICC-500 Shelters)
- SDI-113** Standard Practice for Determining the Steady State Thermal Transmittance of Steel Door & Frame Assemblies
- SDI-131** Accelerated Physical Endurance Test Procedure for Steel Doors, Frames and Frame Anchors

Construction Details

- ANSI/SDI A250.11** Recommended Erection Instructions for Steel Frames
- SDI-110** Standard Steel Doors & Frames for Modular Masonry Construction
- SDI-111** Recommended Details for Standard Details Steel Doors, Frames, Accessories and Related Components
- SDI-122** Installation Troubleshooting Guide for Standard Steel Doors & Frames

Miscellaneous Documents

- SDI-112** Zinc-Coated (Galvanized/Galvannealed) Standard Steel Doors & Frames
- SDI-117** Manufacturing Tolerances for Standard Steel Doors & Frames
- SDI-124** Maintenance of Standard Steel Doors & Frames
- SDI-127** Industry Alert Series (A-L)
- SDI-130** Electrified Hinge Preparations
- SDI-134** Nomenclature for Standard Steel Doors & Steel Frames

AUDIO-VISUAL PROGRAMS ALSO AVAILABLE

MEMBERS OF THE STEEL DOOR INSTITUTE

CECO DOOR

9159 Telecom Drive
Milan, TN 38358
(731) 686-8345
www.cecodoor.com

CURRIES

P.O. Box 1648
Mason City, IA 50402-1648
(641) 423-1334
www.curries.com

DEANSTEEL MANUFACTURING CO.

931 S. Flores Street
San Antonio, TX 78204-1406
(210) 226-8271
www.deansteel.com

DOOR COMPONENTS INC.

7980 Redwood Avenue
Fontana, CA 92336-1638
(909) 770-5700
www.doorcomponents.com

HOLLOW METAL XPRESS

602 S. 65th Avenue
Phoenix, AZ 85043
623-936-7000
www.HMXpress.com

MESKER DOOR, INC.

3440 Stanwood Boulevard
Huntsville, AL 35811-9021
(256) 851-6670
www.meskerdoor.com

MPI

319 North Hills Road
Corbin, KY 40701
(606) 523-0173
www.metalproductsinc.com

PIONEER INDUSTRIES, INC.

171 South Newman Street
Hackensack, NJ 07601
(201) 933-1900
www.pioneerindustries.com

REPUBLIC DOORS & FRAMES

155 Republic Drive
McKenzie, TN 38201-0580
(731) 352-3383
www.republicdoor.com

SECURITY METAL PRODUCTS

5700 Hannum Avenue, Suite 250
Culver City, CA 90230
(310) 641-6690
www.secmnet.com

STEELCRAFT

9017 Blue Ash Road
Cincinnati, OH 45242
(513) 745-6400
www.steelcraft.com



Standards As Tough As Steel.™

STEEL DOOR INSTITUTE

30200 DETROIT ROAD • CLEVELAND, OHIO 44145

440.899.0010 • FAX 440.892.1404

www.steeldoor.org