



TEXAS AIR PRODUCTS

— Delivering Solutions —

To check stock availability, prices and to order product,
please call your local office.

AUSTIN

9330 United Drive, Suite 100
Austin, TX 78758
Phone: (512) 452-2500

CORPUS CHRISTI

350 Centaurus St.
Corpus Christi, TX 78405
Phone: (361) 452-2205

SAN ANTONIO

11122 Gordon Road
San Antonio, TX 78216
Phone: (210) 495-8100

MCALLEN

1400 N. McColl Road, Suite 203
McAllen, TX 78501
Phone: (956) 447-2500

INDEX

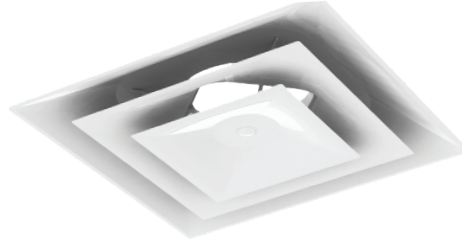
Supply Diffusers and Grilles	3
Returns Diffusers and Grilles	6
Access Doors	8
Dampers	9
Remote Damper Operators	
Duct & Fittings.....	11
Spiral	
Snap-Lock	
Flue Pipe	
Flex Duct	
Square to Round Adapters	
Taps/Start Collars	
Fans, Ventilators & Curbs.....	18
Isolators & Springs	20
Starters & Drives	21
VAV Boxes	22
Accessories.....	23
Gripple Duct and Pipe Hangers	
Duct Sealant	
Tape	
Paint	
Other	
Terms and Conditions	31



TMS

High Performance Square Diffuser

- 3-cone design
- Steel/aluminum construction
- Border Type 3 – T-bar lay-in
- Finish is #26 white



Module	Neck (in)
12x12	06, 08
24x24	06, 08, 10, 12, 14, 15

*AA-Aluminum

OMNI

Architectural Square Diffuser

- Square plaque face
- Steel/aluminum construction
- Border Type 3 — T-bar lay-in
- Finish is #26 white



Module	Neck (in)
12x12	06, 08
24x24	06, 08, 10, 12, 14, 15

*AA-Aluminum

T3SQ-4

VAV Diffuser

- Thermal variable volume diffuser
- Square plaque face
- Adjustment of minimum airflow is achieved by rotating the grey minimum airflow adjustment ring
- Uses a center induction plug to accurately measure the room temperature
- Finish is #26 white



Module	Neck (in)
24x24	06, 08, 10, 12

TBDI-80

Slot Diffuser

- Adjustable, gasket-tipped blade plenum
- Galvanized steel construction
- Internal insulation
- Center T-bar for 2 slot diffuser
- Optional plaster frame available



Length	Size	
	Slot	Neck
24	1	06
48	1	08
48	2	10



TDC

Square Diffuser

- Square neck
- Removable core
- Flush face
- Steel/aluminum construction
- Finish is #26 white



Module	Neck
Surface Mount	
—	06x06
—	09x09
—	12x12
—	15x15
Lay-In	
12x12	06x06
24x24	06x06, 09x09 12x12, 15x15 18x18, 24x24

*AA-Aluminum

PAS

Perforated Supply Diffuser

- Adjustable pattern control
- Flush face
- Steel/aluminum construction
- Border Type 3 — T-bar lay-in
- Finish is #26 white



Module	Neck (in)
12x12	06
24x24	06, 08, 10, 12 14, 16

* AA-Aluminum

PCS

Perforated Supply Diffuser

- Adjustable pattern control
- Flush face
- Steel construction
- Border Type 3 — T-bar lay-in
- Finish is #26 white



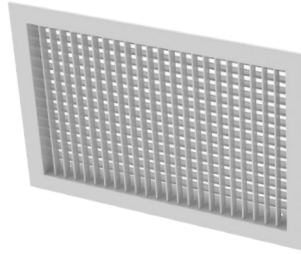
Module	Neck (in)
24x24	06, 08, 10, 12 14, 16



30ORS/FS

Side Wall Supply Grill

- Double deflection
- 3/4" blade spacing
- Individually adjustable blades
- Front blades parallel to the short dimension
- Steel/aluminum construction
- Neck mounted OBD-factory mounted
- Finish is #26 white



Neck

06x04, 08x04, 10x04
12x04 06x06, 08x06
10x06, 12x06 14x06
16x06, 18x06, 20x06
24x06, 08x08, 12x08
4x08, 16x08, 18x08
20x08, 12x10, 14x10
16x10, 18x10, 20x10
18x12, 20x12, 24x12

*RS-Steel; FS-Aluminum

US300FL

Spiral Duct-Mounted Supply Grill

- Double deflection
- 3/4" blade spacing
- Individually adjustable blades
- Foam gasketing standard for tight seal
- Steel/aluminum construction
- Neck mounted OBD-factory mounted
- Finish is #26 white



Neck

12x04, 12x06, 18x06, 24x06

TRM

Rapid Mounting Plaster Frame

- Frame can be mounted in plaster or sheet rock ceiling
- Aluminum construction with steel fasteners
- Finish is #26 white



Module

12x12, 24x12, 24x24



PAR

Perforated Return Diffuser

- Removable face
- Steel or aluminum construction
- Flush face
- Border Type 3 - T-bar lay-in
- Finish is #26 white

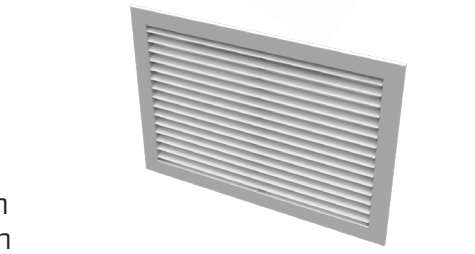


Module	Neck
12x12	10x10
24x12	22x10
24x24	22x22

350RL

Louvered Return Grille

- Surface mount and lay-in
- 35° deflection / 3/4 spacing
- Blades parallel to long dimension
- Steel and aluminum construction
- Finish is #26 white



Surface Mount Neck Size
06x06, 08x06, 10x6, 12x06
08x08, 12x8, 10x10, 12x10
18x10, 20x10, 12x12, 18x12
20x12, 24x12, 36x12, 16x16
18x18, 24x24, 48x24

Lay-In	
Module	Neck
24x12	22x10
24x24	22x22
48x24	46x22

* RL = Steel; FL = Aluminum

350RLF-1

Louvered Return Filter Grille

- Border Type 3 - T-bar lay-in
- 35° deflection / 3/4 spacing
- Blades parallel to long dimension
- Steel and aluminum construction
- Finish is #26 white
- 1" Filter frame (does not include filter)



Surface Mount Neck
24x24
48x24

Lay-In	
Module	Neck
24x24	20x20
48x24	44x20

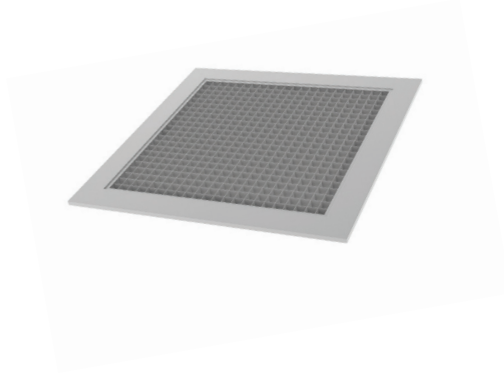
* RL = Steel; FL = Aluminum



50F

Eggcrate Return Grille

- Surface mount and lay-in
- Aluminum construction
- Grid core is 1/2" x 1/2" x 1/2"
- Finish is #26 white



Surface Mount Neck

06x06, 08x06, 10x10, 12x12
16x16, 22x22, 24x24

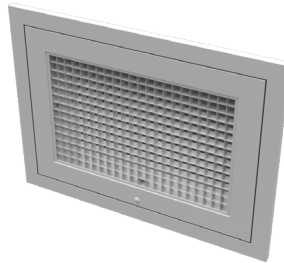
Lay-In

Neck	Module
10x10	12x12
12x12	14x14
22x10	24x12
22x22	24x24
46x22	48x24

50FF-1

Eggcrate Return Filter Grille

- Border Type 3 - T-bar lay-in
- Aluminum construction
- Grid core is 1/2" x 1/2" x 1/2"
- Finish is #26 white
- 1" Filter frame (does not include filter)



Neck	Module
20x20	24x24



Sheetrock Access Door

Fire-Rated Flush Access Door

- Fire-rating
- Painless installation
- 20 Gauge steel door construction



Model	Size
B-ITK	12x12 18x18 24x24

Sheetrock Access Door

Non-Fire-Rated Architectural Access Door

- Anti-flex frame
- Removable and repositionable door
- Painless installation
- 16 Gauge steel construction



Model	Size
B-NTC	12x12, 14x14 16x16, 18x18 24x24, 36x24



Sheet Metal Access Door

Low Pressure Access Door for Sheet Metal

- Tab door
- Insulated R4.2 and gasketed
- 24 Gauge steel construction



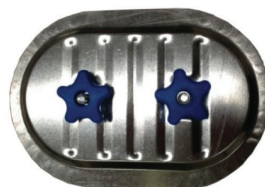
Model	Size
TBSM	06x06, 08x08 10x10, 12x12 16x16, 18x18 24x24



Spiral Access Door

Round Access Door

- Spiral pipe door for high pressure applications
- Closed cell neoprene gasket for optimum sealing
- Self-stick template for installation
- Galvanized steel construction



Model	Size	Spiral Size
LRAD	10x06 16x12	06-18 20-24



AG-15

Square Dampers

- Grille, neck mounted
- Opposed blade
- Galvanized steel construction



Neck Size

06x06, 08x08, 10x10
12x12, 16x16, 18 x18, 22x22

AG-95

Square Dampers

- Diffuser, neck mounted
- Opposed blade
- Galvanized steel construction



Neck Size

06x06, 09x09, 12x12, 15x15
18x18

D-75

Round Dampers

- Diffuser, neck mounted
- Galvanized steel construction



Neck Size

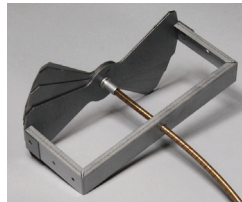
06, 08, 10, 12



RT-150

Roto-Twist® Cable Actuated
Damper Drive System

- 5' foot rotary cable
- Cable is routed inside the ductwork and terminated at the diffuser face
- Galvanized steel construction



Neck Size

06, 08, 10, 12

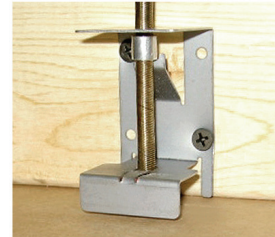
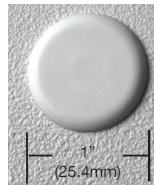
REMOTE DAMPER OPERATORS



RT-CCM

Mini Ceiling Cup

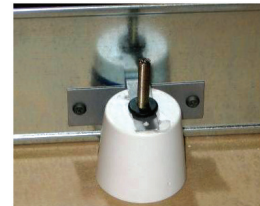
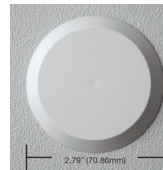
- One inch diameter UL94-V0 fire rated nylon ceiling cap
- Galvanized steel mounting bracket (can be used on wood or metal studs)
- Rotary control cable adjustment with standard hex nut drivers or MAT square nut driver



RT-CCR

Round Ceiling Cup

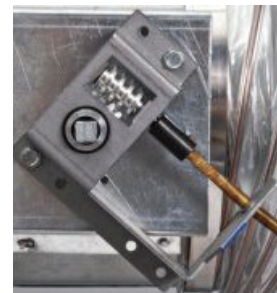
- 2" diameter UL-94-V0 fire rated polystyrene molded ceiling cup
- Paintable self-threading face plate mounts flush
- Rotary control cable adjustment with standard hex nut drivers or MAT square nut driver



RT-WGA

Universal Damper Drive

- One piece construction
- Accommodates damper shaft sizes from 3/8"-1/2" round
- 14 gauge galvanized mounting bracket
- Aluminum worm and spur gear



SPIRAL



SPIRAL PIPE

Single Wall Galvanized

- 28 Gauge galvanized steel
- 10 ft lengths
- Standard (FLAT) spiral seam



Size

06, 08, 10, 12, 14, 16, 18, 20

GORED ELBOWS

Single Wall Galvanized

- 24 Gauge gored steel



Model

Size

45", 90"

14, 16, 18, 20

STAMPED ELBOWS

Single Wall Galvanized

- 26 Gauge stamped steel



Model

Size

45", 90"

06, 08, 10, 12

COUPLINGS

- Pipe to pipe
- Standard (FLAT) spiral seam



Size

06, 08, 10, 12, 14, 16, 18, 20

END CAP



Size

06, 08, 10, 12, 14, 16, 18, 20

SPIRAL (cont.)



REDUCER

- Type R



Size

08x06, 10x06, 10x08, 12x08
12x10, 14x10, 14x12, 16x12
16x14, 18x14, 18x16, 20x16
20x18

BUTTON LOCK

Cody Company, LLC

PIPE

Galvanized Pipe

- 5' Pipe with one end of each piece is crimped for easy fitting of consecutive joints.



Size

04, 06, 08, 10, 12, 14, 16, 18

ELBOW #125

Adjustable Elbow

- 28-30 gauge galvanized steel



Size

04, 06, 08, 10, 12, 14, 16, 18

REDUCER #401

Sheet Metal Reducer

- Crimp on small end
- Collars are hemmed
- 30 gauge galvanized steel



Size

06x04, 07x06, 08x06, 08x07
09x08, 10x06, 10x08, 10x09
12x06, 12x08, 12x10, 14x06
14x08, 14x10, 14x12, 16x10
16x12, 16x14, 18x16, 20x18

WYE #850

Full Flow WYE

- ASTM-A653 CS Type B galvanized steel construction
- Base end is hemmed
- Crimped end on both branches
- 30 gauge galvanized steel



Size

06x06x06, 08x08x06
08x08x08, 10x10x10
12x12x10, 14x12x12

FLUE PIPE



TYPE-B GAS VENT

Pipe & Fittings

- Double wall
- Positive twist-lock connection
- Galvanized steel outer and Aluminum inner material



Model	Size
M3	04, 05, 06, 08, 10, 12
M5	04, 05, 06, 08, 10
M12	04, 05, 06, 08, 10, 12
M18	04, 05, 06, 08, 10, 12
M24	04, 05, 06, 08, 10, 12



Model	Size
M12A	04, 05, 06, 08, 10, 12



Model	Size
M45	10, 12



Model	Size
M90	04, 05, 06, 08

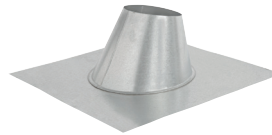
FLUE PIPE (cont.)



Model	Size
MC	08, 10, 12



Model	Size
MCHP	04, 05, 06



Model	Size
MF	04, 05, 06, 08, 10, 12



Model	Size
MFT	06, 08, 10, 12



Model	Size
MSC	04, 05, 06, 08, 10, 12



Model	Size
MDC	04, 05, 06, 08, 10, 12

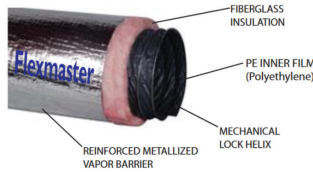
FLEX



FLEXMASTER 1M FLEX

Acoustical Flexible Duct Insulated

- R6 Insulation
- Reinforced metalized vapor barrier
- Mechanically locked to the duct helix without the use of adhesives.
- 25 ft length



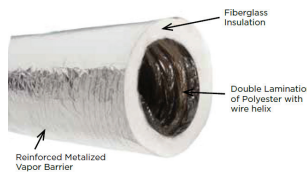
Size

06, 08, 10, 12, 14, 16

FLEXMASTER 9M FLEX

Low Pressure Flexible Duct

- R6 Insulation
- Reinforced aluminum material vapor barrier
- 25 ft length



Size

04, 06, 08, 10, 12, 14, 16, 18



ATCO FLEX

Low-Medium Pressure Flexible Duct

- R6 Insulation
- Metallized polyester outer jacket
- Double lamination polyester around wire helix.
- 25 ft length



Size

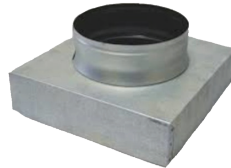
04, 06, 08, 10, 12, 14, 16, 18

SQUARE TO ROUND



ADAPTERS

- Black interior - 26-Gauge G-90 Galvanized steel
- Standard 3" depth size
- Open corners



Module Size	Neck Size
06x06	06
08x08	06, 08
09x09	08
10x10	06, 08, 10
12x12	08, 10, 12
15x15	12, 14
18x18	16
20x20	16, 18
22x10	06, 08, 10
22x22	06, 08, 10, 12, 14, 16, 18
24x24	14, 16, 18

TAPS

CB-SOG & CBD-SOG

Conical Bellmouth SOG (stick on gasket)

- 26-gauge steel
- CBD has B03, build-out (2"), 3/8" square shaft
- U-bolt, nylon bushings, locking quadrant, handle
- 1" formed on flange and stick on gasket to provide air-tight installation



Size
06, 08, 10, 12, 14, 16, 18

FLD-SOG

Straight Collar SOG (stick on gasket)

- 26-Gauge steel
- B03, build-out (2"), 3/8" square shaft
- U-bolt, nylon bushings, locking quadrant, handle
- 1" formed on flange and stick-on gasket to provide air-tight installation



Size
06, 08, 10, 12, 14, 16, 18

TAPS (cont.)



SLD

Connecting Sleeve

- 26-gauge steel
- B03, build-out (2"), 3/8" square shaft
- U-bolt, nylon bushings, locking quadrant, handle



Size

06, 08, 10, 12, 14, 16, 18

STOD-SOG

Side Takeoff 90° (stick on gasket)

- 26-gauge steel
- B03, build-out (2"), 3/8" square shaft
- U-bolt, nylon bushings, locking quadrant, handle
- 1" formed on flange and stick-on gasket to provide air-tight installation



Size

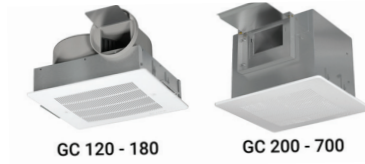
06, 08, 10, 12, 14, 16, 18



Exhaust Fans

Gemini Exhaust Fan

- 75 CFM – 480 CFM
- Ceiling mounted or inline
- Backdraft damper
- Adjustable mounting brackets

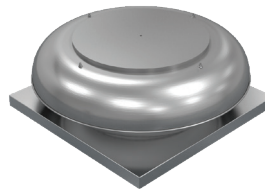


Model	Neck Size
GC-128	06 RD
GC-166	06 RD
GC-342	08x06
GC-422	08x06
GC-633	10.5x04

PR

Intake/Relief Vent

- Spun aluminum intake/relief ventilator
- 16 gauge marine alloy aluminum
- Compact, durable and efficient

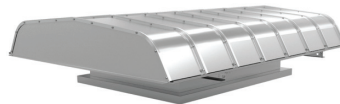


Neck Size
08, 12

GR

Gravity Intake/Relief Vent

- High efficiency gravity roof ventilators
- 18 gauge marine alloy aluminum
- Hurricane rated
- Rain gutters are standard



Neck Size
12x12

Speed Controller

Variable Fan Speed Controller

- 5 Amp - 120 Volt
- Wall-mounted

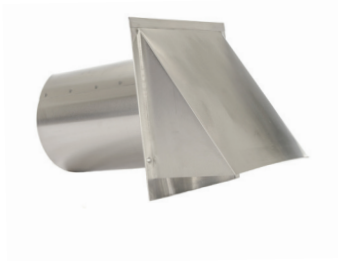




Wall Cap

Exhaust Wall Cap

- With built-in damper
- Wall-mounted
- No bird screen
- Aluminum construction



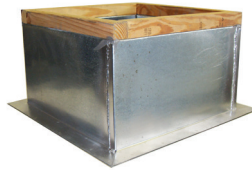
Neck Size

04, 06, 08

Roof Curbs

Self-Flashing Roof Curb

- 18 Gauge steel construction
- 14" height
- 2"x 2" wood nailer
- R6 rigid board insulation
- 3 1/2" base mounting flanges
- Damper tray



Outer Dimensions

16.5, 18.5, 22.5, 28.5, 34.5



Hangers and Springs

Spring Vibration Isolator

- Hangers shall consist of rigid steel frame
- LDS (Low Dynamic Stiffness) rubber
- Spring elements shall have a lateral stiffness greater than 1.2 times the rated vertical stiffness
- Non-welded spring elements
- polyester powder coated
- Springs are color coded or otherwise identified to indicate load capacity



Series	Hangers Model	Rod Size
A	DNHS-A HANGER	5/8
A	HS-A HANGER	5/8
B	DNHS-B HANGER	3/4
B	HS-B HANGER	3/4
X	DNHS-X/30NX HANGER	3/8
X	HS-X/30X HANGER	3/8

Springs (corresponding series)		
Series	Model	Weight (lbs.)
A	SPRING, ORANGE	75
A	SPRING, BROWN	125
A	SPRING, BLACK	200
A	SPRING, YELLOW	310
B	SPRING, GREEN	280
B	SPRING, RED	450
B	SPRING, WHITE	750
B	SPRING, BLUE	1000
C	SPRING, YELLOW	1350
C	SPRINGS, BLACK/RED	1750
X	SPRING, BROWN	23
X	SPRING, RED	33
X	SPRING, WHITE	54
X	SPRING, BLACK	76
X	SPRING, YELLOW	113



Hangers		
HD-GREEN NEOPRENE	35 lbs.	3/8
HD-WHITE NEOPRENE	75 lbs.	3/8
HD-A-GREEN NEOPRENE	75 lbs.	1/2



BAS

Building Automation Starter

- Hand/Off/Auto keypad with LED status indicators
- High reliability SmartStart patented superior motor protection
- Two voltage inputs (12-250VAC) for auto run and fireman's override
- Electronic overload protection including locked rotor, cycle fault and maximum time to start (due to mis-sized motor or overload)
- Combination versions include disconnect



Model	HP	Voltage
BAS1-9/P-G6-40	3/1	460/208
BAS1-18/P-G17-40	10/5	460/208
BAS1-32/P-G22-40	20/7.5	460/208
BAS1-9-P-40	5/2	460/208
BAS1-18/P-40	10/5	460/208
BAS1-P SINGLE PHASE	1	110/ 240

Q-Link

Variable Frequency Drive

- Smartphone operation via bluetooth
- Simple and intuitive LCD display
- Built in damper control with 24V output
- Native communications (BACnet & Modbus)
- Available in drive only and drive + bypass



Model	HP	Voltage
QLINK-009DV	2/5	208/460
QLINK-012DV	3/7.5	208/460
QLINK-017DV	5/10	208/460
QLINK-024DV	5/15	208/460
QLINK-028DV	7.5/20	208/460
QLINK1-BYP009DV-6	1/3	208/460
QLINK1-BYP009DV-8	2/5	208/460
QLINK1-BYP012DV	3/7.5	208/460
QLINK1-BYP017DV	5/10	208/460
QLINK1-BYP024DV	5/15	208/460
QLINK1-BYP028DV	7.5/20	208/460



DESV

Single Duct VAV Box

- Bare box
- Multipoint averaging velocity sensor
- Slip & drive cleat connectors
- Controls enclosure box sold separately
- Steel construction



Inlet Size

6, 8, 10, 12, 14, 16

GRIPPLE



Loop

Cable with Crimped Loop

- For choking around bar joists, purlins, beams, roof trusses, strut, and other accessible building features.
- Galvanized high tensile steel cable
- Two sizes available —10 foot and 15 foot
- Two weights available #2 100 lbs. and #3 200 lbs.



Length (ft.) Weight (lbs.)

10, 15 100, 200

Standard Hanger

Cable Hanger with Fastener

- Up to six times faster to install than traditional hanging systems
- Versatile and simple to use
- Aesthetically discreet and lightweight
- Two weights available #2 100 lbs. and #3 200 lbs.



Weight (lbs.)

100, 200

Express Hanger

Push-Button Release Fastener

- Up to six times faster to install than traditional hanging systems
- Keyless; no tool required for adjustment
- Aesthetically discreet and lightweight
- Ergonomic push buttons allow for rapid height adjustment



Weight (lbs.)

100

GRIPPLE (cont.)



Duct Trapeze Hanger

Rectangular Duct Fastener

- Attaches to bottom of duct with self-drilling screws
- Rubber pad prevents air leakage and dampens vibration
- Pin allows rapid adjustment
- Suitable for ducting made from up to 16 gauge steel



Weight (lbs.)

100

Length (ft.) Weight (lbs.)

Stud End Fixing

Cable with Crimped 3/8" Stud

- Galvanized high tensile steel cable
- 10-Foot-long AND 15-Foot-long Cable
- #2 100 lbs. and #3 200 lbs. Cable
- Installs into an anchor or internally threaded concrete insert



10, 15

100, 200

90° Eyelet End Fixing

Cable with Crimped 90° Eyelet End Fixing

- Galvanized high tensile steel cable
- 10-Foot-long cable
- #2 100 lbs. cable
- For shot firing into concrete or steel
- 90° Eyelet: zinc plated steel



Length (ft.) Weight (lbs.)

10

100

GRIPPLE (cont.)



Spider-Swivel Toggle

Engineered Swivel Toggle End Fixings

- Below deck install saves time due to swivel toggle technology universal design allows decision on cable size to be made after the slab is poured
- #2 100 lbs. cable
- 10-foot length
- Once installed, swivel toggle design ensures it cannot be accidentally removed/displaced



Length (ft.)	Weight (lbs.)
10	100

Unigrip

Cable Suspension Product

- Button acts as a locking screw and indicator
- Integral ergonomically designed release button allows for simple adjustment
- #2 100 lbs. and #3 200 lbs. cable use
- Up to 6 times faster than traditional suspension systems



Length (ft.)	Weight (lbs.)
-	100, 200

Unigrip - Central Exit

Cable Suspension Product

- Button acts as a locking screw and indicator
- Integral ergonomically designed release button allows for simple adjustment
- #3 200 lbs. cable use
- 1" male thread for mechanical fixing
- Central cable exit



Length (ft.)	Weight (lbs.)
-	200

GRIPPLE (cont.)



Concrete Anchor

Ceiling Anchoring into Concrete

- Ideal for fixing Gripple hangers into concrete
- Knock into a pre-drilled hole, pull with a claw hammer to set
- #2 100 lbs. cable use
- 10-foot-length
- Independently certified



Length (ft.) Weight (lbs.)

10

100

Spider

Cast-in-Place Concrete Insert

- Below deck install saves time due to swivel toggle technology on both cable and rod attachments
- Universal design allows decision on rod size or cable size to be made after the slab is poured
- One insert accommodates rod sizes from 3/8" to 3/4", as well as No.2 - No.5 swivel toggle cable hanger kits
- Four wire anchors secure into concrete and ultrasonically welded head eliminates ingress during pour



Cable Cutter

Small Gripple Wire Cutters

- Hardened jaws for durability
- Small size for use up to 4 mm diameter



DUCT SEALANT



DP1010

Water Based Duct Sealant

- Premium rubber content quality, smooth water based
- Gray color
- Paintable with latex or epoxy paints after cured
- LEED V4 qualified
- Sold by the gallon



DP1015

Water Based Duct Sealant

- Smooth, water based
- Gray color
- Paintable with latex or epoxy paints after cured
- LEED V4 qualified
- Sold by the gallon



DP1020

Water Based Duct Sealant

- Fiber reinforced, water based, premium quality
- Gray color
- Paintable with latex or epoxy paints after cured
- LEED V4 qualified
- Sold by the gallon



TAPE

Shurtape®

AF 100

UL 181A Aluminum Foil Tape

- Excellent adhesion to rigid fiberglass duct board and flexible air duct
- Flexible and easy to create airtight bonds
- Resists water vapor and other HVAC duct contaminations
- 60 Yards length



Roll Size (in.)

2.5, 3

AF 975

Cold Temperature Aluminum Foil Tape

- Superior stability during extreme fluctuations in temperature from -20 F to 260 F
- Indefinite product life after application
- Resists water vapor, odor and smoke transmission
- 50 yards length



Roll Size (in.)

2, 3

AF 984

Cold Temperature FSK Tape

- For sealing seams in scrim-reinforced duct insulation
- Permanent bond, cold temperature acrylic adhesive with excellent shelf life
- Resists water vapor and smoke transmission
- 50 yards length



Roll Size (in.)

3

TAPE (cont.)

Shurtape®

PC 609

Performance-Grade, Co-Extruded Cloth Duct Tape

- For use in the HVAC industry to repair thermal insulation and seal metal ductwork]
- Easy to unwind and tear
- Made using Polybonded CO-EX Technology®
- 60 yards length



Roll Size (in.)

2

PC 857

UL 181B-FX Printed Cloth Duct Tape

- Used in the HVAC industry to seal, seam and join Class 1 flex duct
- UL 181B-FX Listed – clearly printed on the tape for quick identification
- Easy to unwind and tear
- Resistant to flame spread, smoke generation, mold growth, humidity and the effects of high temperatures
- 60 yards length



Roll Size (in.)

2

OTHER

Stainless Steel Clamp

Quick Release LS Series Clamp

- The housing is made from AISI 201 stainless steel
- The screw is made of AISI 1018 carbon steel
- The bridge is made from AISI 410 stainless steel neutral hardened and drawn



Size (in.)

8, 12, 18

Nylon Strap

Heavy Duty Cable Tie 175 LB

- Natural color
- 50 pieces per bag, sold per bag



Size (in.)

36, 48

Duct Wrap Film

High-Tack Adhesive

- Protects from dust, debris, and paint
- High-tack, easily removable, tear-resistant
- Highly elastic, UV-resistant
- Natural color



Size (in.)

24, 38

Brushes

Sealant Chip Brushes

- Available in 3" sizes



Touch-Up Paint

PPC British White Touch Up Paint

- Matches all Titus air devices
- #26 british white

#26 White



Prices

Prices are FOB, Texas Air Products warehouse plus applicable taxes and delivery costs. Prices are subject to change without notice.

Terms

All orders shall be paid upon placing the order, via credit card, ACH, or check, unless prior credit terms have been approved. Texas Air Products reserves the right to pursue late, collection, and legal fees where necessary for all orders not paid per Texas Air Products credit terms.

Tax Exempt

Tax Exemption or Tax Resale Certificate must be presented at time of order.

Freight & Delivery

Freight charges will be added to orders that are to be delivered to the requester. Texas Air Products will choose the designated carrier.

All orders are FOB, Texas Air Products warehouse. Ownership of merchandise ordered becomes the recipient's once the order leaves a Texas Air Products warehouse.

Customer is responsible for checking shipments for shortages and damages. Customer is responsible for notifying the carrier of any discrepancies and filing actual freight claim. Texas Air Products is not liable for any damage or loss.

Warranty

There are no expressed warranties for merchandise ordered, however the Manufacturer's standard warranty will be available.

Returns

Merchandise may only be returned with written approval of Texas Air Products. All goods must be in new saleable condition and returned in original packaging within 30 days of initial order.

Returned goods are subject to a 25% restocking fee.