



Meter Mounting Equipment

Texas Deregulated Utilities

Texas/New Mexico Power - TNP & CVEC Area

125-320 Amps | 4-7 Terminals | Single Position

| Catalog Number | Amps | Terminals | Service |
|----------------|------|-----------|---------|
| U8435-RL-TG | 125 | 4 | OH |
| U7588-XL | 125 | 4 | UG |
| U8100-ZL* | 125 | 7 | OH |
| U7021-RL-TG | 200 | 4 | OH |
| U1980-O† | 200 | 4 | UG |
| U9580-RXL | 200 | 5 | OH |
| U1079-R | 320 | 4 | OH |
| U2448-X | 320 | 4 | OH/UG |

*Includes a 1 1/2" hub.

†Side wireway included.

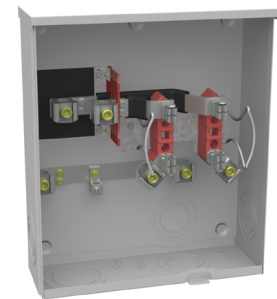
200-320 Amps | 7 Terminals | Single Position | Medium & Heavy Duty

| Catalog Number | Amps | Terminals | Service | Bypass |
|----------------|------|-----------|---------|--------|
| U7423-XL* | 200 | 7 | OH/UG | Lever |
| U9701-RRL | 200 | 7 | OH/UG | Lever |
| U2594-X | 320 | 7 | OH/UG | Lever |

*Lever operates bypass only, not jaw clamping.

150 Amps per Position | 4 Terminals | Multi-Position | Horizontal Gangs

| Catalog Number | Amps | Terminals | Positions | Service |
|----------------|------|-----------|-----------|---------|
| U1232-X | 150 | 4 | 2 | OH/UG |
| U1233-RXL | 150 | 4 | 3 | OH/UG |
| U1234-RXL | 150 | 4 | 4 | OH/UG |
| U1235-RXL | 150 | 4 | 5 | OH/UG |
| U1236-RXL | 150 | 4 | 6 | OH/UG |



U1980-O

200 Amps per Position | 4 & 7 Terminals | Multi-Position | Horizontal Gangs

| Catalog Number | Amps | Terminals | Positions | Service |
|----------------|------|-----------|-----------|---------|
| U1252-X-K1 | 200 | 4 | 2 | OH/UG |
| U1253-X-K3 | 200 | 4 | 3 | OH/UG |
| U1254-X-K3 | 200 | 4 | 4 | OH/UG |
| U1255-X-K4 | 200 | 4 | 5 | OH/UG |
| U1256-X-K4 | 200 | 4 | 6 | OH/UG |
| U2734-XT | 200 | 7 | 4 | OH/UG |



U7423-XL

Please consult serving utility for their requirements prior to ordering or installing, as specifications and approvals vary by utility, and may require local electrical inspector approval. All installations must be installed by a licensed electrician and must comply with all national and local codes, laws and regulations. Milbank reserves the right to make changes in specifications and features shown without notice or obligation.



CoServ Area

200-320 Amps | 4 Terminals | Single Position

| Catalog Number | Amps | Terminals | Service |
|----------------|------|-----------|---------|
| U7040-XL-TG | 200 | 4 | OH/UG |
| U4257-X-2/K2* | 320 | 4 | OH/UG |

*Lugs included.

200-320 Amps | 7 Terminals | Single Position | Medium & Heavy Duty

| Catalog Number | Amps | Terminals | Service | Bypass |
|----------------|------|-----------|---------|--------|
| U9700-DL-QG* | 200 | 7 | OH | Lever |
| U3786-X-QG† | 200 | 7 | OH/UG | Lever |
| U4487-X-2/K6‡ | 320 | 7 | OH/UG | Lever |

*Includes a 2" hub.

†Lever operates bypass only, not jaw clamping.

‡Lugs included.

Pedernales Electric Cooperative (PEC)

200-320 Amps | 4 Terminals | Single Position

| Catalog Number | Amps | Terminals | Service |
|-------------------|------|-----------|---------|
| U7021-DL-TG | 200 | 4 | OH |
| U7040-XL-TG | 200 | 4 | UG |
| U1079-F-2/K3L-PEC | 320 | 4 | OH |
| U1797-O-2/K3L-PEC | 320 | 4 | UG |



U7021-DL-TG

AEP—West Area

200 Amps per Position | 4 Terminals | Multi-Position | Horizontal Gang | Lugs Included

| Catalog Number | Amps | Terminals | Positions | Service |
|--------------------------|------|-----------|-----------|---------|
| U1252-RRL-KK-K1-BLG-SLVG | 200 | 4 | 2 | OH/UG |
| U1253-RRL-KK-K1-BLG-SLVG | 200 | 4 | 3 | OH/UG |
| U1254-RRL-KK-K1-BLG-SLVG | 200 | 4 | 4 | OH/UG |
| U1255-RRL-KK-K1-BLG-SLVG | 200 | 4 | 5 | OH/UG |
| U1256-RRL-KK-K1-BLG-SLVG | 200 | 4 | 6 | OH/UG |



U1252-RRL-KK-K1-BLG-SLVG

400 Amps | 4 & 7 Terminals | Meter Mains with Breaker | Lugs Included

| Catalog Number | Amps | Terminals | Service | Phase |
|------------------------|------|-----------|---------|-------|
| U6227-X-400-K3L-BLG* | 400 | 4 | OH/UG | 1Ø3W |
| U6229-X-400-K7L-BLG | 400 | 7 | OH/UG | 3Ø4W |
| U6115-X-2/200-K7L-BLG† | 400 | 7 | OH/UG | 3Ø4W |

*Has a 400 Amps main breaker.

†Includes two 200 Amps main breakers.

Please consult serving utility for their requirements prior to ordering or installing, as specifications and approvals vary by utility, and may require local electrical inspector approval. All installations must be installed by a licensed electrician and must comply with all national and local codes, laws and regulations. Milbank reserves the right to make changes in specifications and features shown without notice or obligation.





Meter Mounting Equipment

Texas Deregulated Utilities

AEP—West Area (cont.)

125-200 Amps | 4 Terminals | Single Position

| Catalog Number | Amps | Terminals | Service |
|---------------------------|------|-----------|---------|
| U7040-RL-TG-KK-BLG-AEP | 200 | 4 | OH |
| U7021-RL-TG-KK-BLG | 200 | 4 | OH |
| U1980-O-KK-BLG-AEP | 200 | 4 | UG |
| UAP7040-RL-TG-KK-BLG-AEP* | 200 | 4 | OH |
| UAP1980-O-KK-BLG-AEP* | 200 | 4 | UG |
| U9801-RXL-QG-BLG-AEP | 200 | 4 | OH/UG |
| UAP9801-RXL-QG-BLG-AEP* | 200 | 4 | OH/UG |

*UAP for coastal area (aluminum).



U9581-RL-QG-BLG-AEP

200 Amps | 5 & 7 Terminals | Single Position | Heavy Duty | 3Ø

| Catalog Number | Amps | Terminals | Service | Phase | Bypass |
|-----------------------|------|-----------|---------|-------|--------|
| U9581-RL-QG-BLG-AEP | 200 | 5 | OH/UG | 3Ø3W | Lever |
| U9701-X-QG-BLG-AEP | 200 | 7 | OH/UG | 3Ø4W | Lever |
| UAP9581-RL-BLG-AEP* | 200 | 5 | OH/UG | 3Ø3W | Lever |
| UAP9701-X-QG-BLG-AEP* | 200 | 7 | OH/UG | 3Ø4W | Lever |

*UAP for coastal area (aluminum).

320 Amps | 4-7 Terminals | Single Position | Lugs Included

| Catalog Number | Amps | Terminals | Service | Phase |
|------------------------|------|-----------|---------|-------|
| U5161-X-K3L-K2L-BLG | 320 | 4 | OH/UG | 1Ø3W |
| U1797-O-K3L-K2L-BLG† | 320 | 4 | UG | 1Ø3W |
| U4905-X-K3-K2-BLG† | 320 | 4 | OH/UG | 1Ø3W |
| UAP1797-O-K3L-K2L-BLG* | 320 | 4 | UG | 1Ø3W |
| UAP4362-R-K3-K2-BLG | 320 | 5 | OH/UG | 1Ø |
| UAP4362-R-K3-K2-BLG* | 320 | 5 | OH/UG | 1Ø |
| U4342-R-K7-K6-BLG | 320 | 7 | OH/UG | 3Ø4W |
| UAP4342-R-K7-K6-BLG* | 320 | 7 | OH/UG | 3Ø4W |
| U2594-X-K7-K6-BLG† | 320 | 7 | OH/UG | 3Ø4W |
| UAP2594-X-K7-K6-BLG* | 320 | 7 | OH/UG | 3Ø4W |

*UAP for coastal area (aluminum).

†Side wireway included.



U4342-R-K7-K6

Please consult serving utility for their requirements prior to ordering or installing, as specifications and approvals vary by utility, and may require local electrical inspector approval. All installations must be installed by a licensed electrician and must comply with all national and local codes, laws and regulations. Milbank reserves the right to make changes in specifications and features shown without notice or obligation.





Meter Mounting Equipment

Texas Deregulated Utilities

XCEL Energy

200-320 Amps | 5 & 7 Terminals | Single Position | Heavy Duty

| Catalog Number | Amps | Terminals | Service | Bypass |
|---------------------|------|-----------|---------|--------|
| U4801-XL-5T9 | 200 | 5 | OH/UG | Lever |
| U9701-RRL | 200 | 7 | OH/UG | Lever |
| U4184-X | 200 | 7 | OH/UG | Lever |
| U1779-R-5T9 | 320 | 5 | OH/UG | Lever |
| U3000-O-5T9-K3L-K2L | 320 | 5 | UG | Lever |
| U2120-X | 320 | 7 | UG | Lever |
| U2594-X | 320 | 7 | OH/UG | Lever |



U4801-XL-5T9

200 Amps per Position | 5 Terminals | Multi-Position | Horizontal Gangs | Heavy Duty

| Catalog Number | Amps | Terminals | Positions | Service | Bypass |
|----------------|------|-----------|-----------|---------|--------|
| U2872-XT-5T9 | 200 | 5 | 2 | OH/UG | Lever |
| U2873-XT-5T9 | 200 | 5 | 3 | OH/UG | Lever |
| U2874-XT-5T9 | 200 | 5 | 4 | OH/UG | Lever |
| U2875-XT-5T9 | 200 | 5 | 5 | OH/UG | Lever |
| U2876-XT-5T9 | 200 | 5 | 6 | OH/UG | Lever |



U2872-XT-5T9

CenterPoint Energy*

125-200 Amps | 4-7 Terminals | Single Position | Ring Type

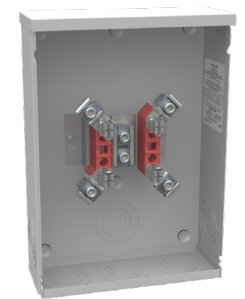
| Catalog Number | Amps | Terminals | Service |
|----------------|------|-----------|---------|
| U8874-RL-LR | 125 | 4 | OH/UG |
| U5009-RL-LR | 200 | 4 | OH |
| U8878-RL-LR | 200 | 4 | OH/UG |
| U8878-O-LR | 320 | 4 | UG |
| U1973-EL* | 320 | 5 | OH/UG |
| U3328-RXL-LR† | 320 | 7 | OH/UG |

*Includes 2 1/2" hub and is phase 3Ø3W.

†Includes lever bypass that supplies clamping action on meter spades and also operates bypass device.

320 Amps | 4-7 Terminals | Single Position | Heavy Duty

| Catalog Number | Amps | Terminals | Service | Bypass |
|-----------------|------|-----------|---------|--------|
| U1797-O-K3L-K2L | 320 | 4 | UG | Lever |
| U2448-X | 320 | 4 | OH/UG | Lever |
| U1079-R-5T9 | 320 | 5 | OH/UG | Lever |
| U2594-X | 320 | 7 | OH/UG | Lever |
| U2594-X-BLG | 320 | 7 | OH/UG | Lever |



U8878-O-LR

Gang sockets are approved by CenterPoint Energy on a case-by-case basis

Please consult serving utility for their requirements prior to ordering or installing, as specifications and approvals vary by utility, and may require local electrical inspector approval. All installations must be installed by a licensed electrician and must comply with all national and local codes, laws and regulations. Milbank reserves the right to make changes in specifications and features shown without notice or obligation.





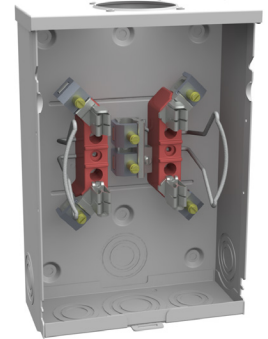
Meter Mounting Equipment

Texas Deregulated Utilities

Entergy

125-200 Amps | 4-7 Terminals | Single Position

| Catalog Number | Amps | Terminals | Service |
|----------------|------|-----------|---------|
| U8435-RL-TG | 125 | 4 | OH |
| U7487-RL-TG | 125 | 4 | OH |
| U7021-RL-TG | 200 | 4 | OH |
| U7021-DL-TG | 200 | 4 | OH |
| U7040-RL-TG | 200 | 4 | OH |
| U1980-O | 200 | 4 | UG |



U7487-RL-TG

200-320 Amps | 4-7 Terminals | Single Position | Heavy Duty

| Catalog Number | Amps | Terminals | Service | Bypass |
|------------------|------|-----------|---------|--------|
| U4581-RL | 200 | 5 | OH | Lever |
| U4701-RL | 200 | 7 | OH | Lever |
| U4184-X | 200 | 7 | UG | Lever |
| U1797-O-K3L-K2L* | 320 | 4 | UG | Lever |
| U4257-X | 320 | 4 | OH | Lever |
| U4419-X† | 320 | 5 | OH | Lever |
| U4505-X-2/K3* | 320 | 5 | OH | Lever |
| U4487-X-2/K6* | 320 | 7 | OH | Lever |
| U4487-X-2/K7* | 320 | 7 | OH | Lever |
| U2120-X-2/K7** | 320 | 7 | UG | Lever |



U4419-X

*Lugs included.

†This product has a center disconnect.

‡Includes a side wireway.

200 Amps per Position | 4 Terminals | Multi-Position | Horizontal Gangs

| Catalog Number | Amps | Terminals | Positions | Service |
|----------------|------|-----------|-----------|---------|
| U1252-X-K1* | 200 | 4 | 2 | OH/UG |
| U1253-X | 200 | 4 | 3 | OH/UG |
| U1254-X | 200 | 4 | 4 | OH/UG |
| U1255-X | 200 | 4 | 5 | OH/UG |
| U1256-X | 200 | 4 | 6 | OH/UG |

*Lugs included.

Current Transformer Cabinets

| Catalog Number | Amps |
|-----------------|---------|
| 403214-TC3R-SP1 | 400-600 |
| 543214-TC3R-SP1 | 800 |



403214-TC3R-SP1

Please consult serving utility for their requirements prior to ordering or installing, as specifications and approvals vary by utility, and may require local electrical inspector approval. All installations must be installed by a licensed electrician and must comply with all national and local codes, laws and regulations. Milbank reserves the right to make changes in specifications and features shown without notice or obligation.



TXU/Oncor Area

150-320 Amps | 4-7 Terminals | Single Position

| Catalog Number | Amps | Terminals | Service | Bypass |
|-------------------------|------|-----------|------------------|-----------|
| U7262-RL-TG | 150 | 4 | OH | No Bypass |
| U7040-XL-TG | 200 | 4 | OH/UG | No Bypass |
| U9801-RXL | 200 | 4 | OH/UG | HD |
| U9581-RL-QG | 200 | 5 | OH/UG | HD |
| U9701-RXL | 200 | 7 | OH/UG | HD |
| U4362-R | 320 | 4 | OH (w/o lugs) | HD |
| U1797-O-K3L-K2L* | 320 | 4 | UG (w/ lugs) | Lever |
| U4013-X* | 320 | 7 | OH/UG (w/o lugs) | Lever |

*Includes side wireway.



U1797-O-K3L-K2L



U9701-RXL

150-200 Amps | 4 Terminals | Multi-Position | Horizontal Gang

| Catalog Number | Amps | Positions | Service |
|-------------------|------|-----------|---------|
| U9353-XL | 150 | 3 | OH/UG |
| U9354-XL | 150 | 4 | OH/UG |
| U1252-X-K1 | 200 | 2 | OH/UG |
| U1253-X | 200 | 3 | OH/UG |
| U1254-X | 200 | 4 | OH/UG |
| U1255-X | 200 | 5 | OH/UG |
| U1256-X | 200 | 6 | OH/UG |

200 Amps | 4 Terminals | Mobile Home Pedestal

| Catalog Number | Amps | Positions | Service |
|------------------------|------|-----------|---------|
| U5138-O200S-NHB | 200 | 1 | UG |
| U5139-O200S-NHB | 200 | 2 | UG |

Accessories

| Hubs for Standard "RL" Opening | Suffix | Catalog Number |
|--------------------------------|--------|----------------|
| 1" | -WL | A7514 |
| 1 1/4" | -YL | A7515 |
| 1 1/2" | -ZL | A7516 |
| 2" | -DL | A7517 |
| 2 1/2" | -EL | A7518 |

| Closing Plates | Suffix | Catalog Number |
|----------------|--------|----------------|
| Small | -XL* | A7551 |
| Large | -X | A9064 |
| Adapter | -RRL | S8324 |

| Hubs for Standard "R" Opening | Suffix | Catalog Number |
|-------------------------------|--------|----------------|
| 3" | -F | A8110 |
| 3 1/2" | -G | A8111 |
| 4" | -H | A8112 |

| Fifth Terminals | Catalog Number |
|-----------------|----------------|
| Square Hole | K5T |
| Round Hole | 5T8K2 |

| Lug Kits | Suffix | Catalog Number |
|-----------------------|-----------|--------------------|
| 350 kcmil | 1Ø | (3 per set) |
| Single | -K1 | K1539 |
| Twin | -K2 | K1350 |
| Twin (non-rotating) | -K2L | K1350L |
| 600 kcmil | 1Ø | (3 per set) |
| Single | -K3 | K1540 |
| Single (non-rotating) | -K3L | K1540L |
| Twin | -K4 | K1541 |
| 350 kcmil | 3Ø | (4 per set) |
| Single | -K5 | K3082 |
| Twin | -K6 | K3442 |
| 600 kcmil | 3Ø | (4 per set) |
| Single | -K7 | K3441 |
| Twin | -K8 | K3083 |



Please consult serving utility for their requirements prior to ordering or installing, as specifications and approvals vary by utility, and may require local electrical inspector approval. All installations must be installed by a licensed electrician and must comply with all national and local codes, laws and regulations. Milbank reserves the right to make changes in specifications and features shown without notice or obligation.