



# TEXTS FROM THE ROMANTIC PERIOD

Approx 1800-1850



# New England Primer

- The New England Primer was a series of educational books used for children from 1681 to 1830. 450 editions were produced and more than 6 million copies were printed. Primers were used in schools to teach fundamental education to students across grades.
- While primers were around before the Romantic period these children's education books represent the growth of education for children and the middle class. During the Romantic Period due to changes in belief and drastic innovations, literacy rates and education for the middle class was at an unprecedented high.

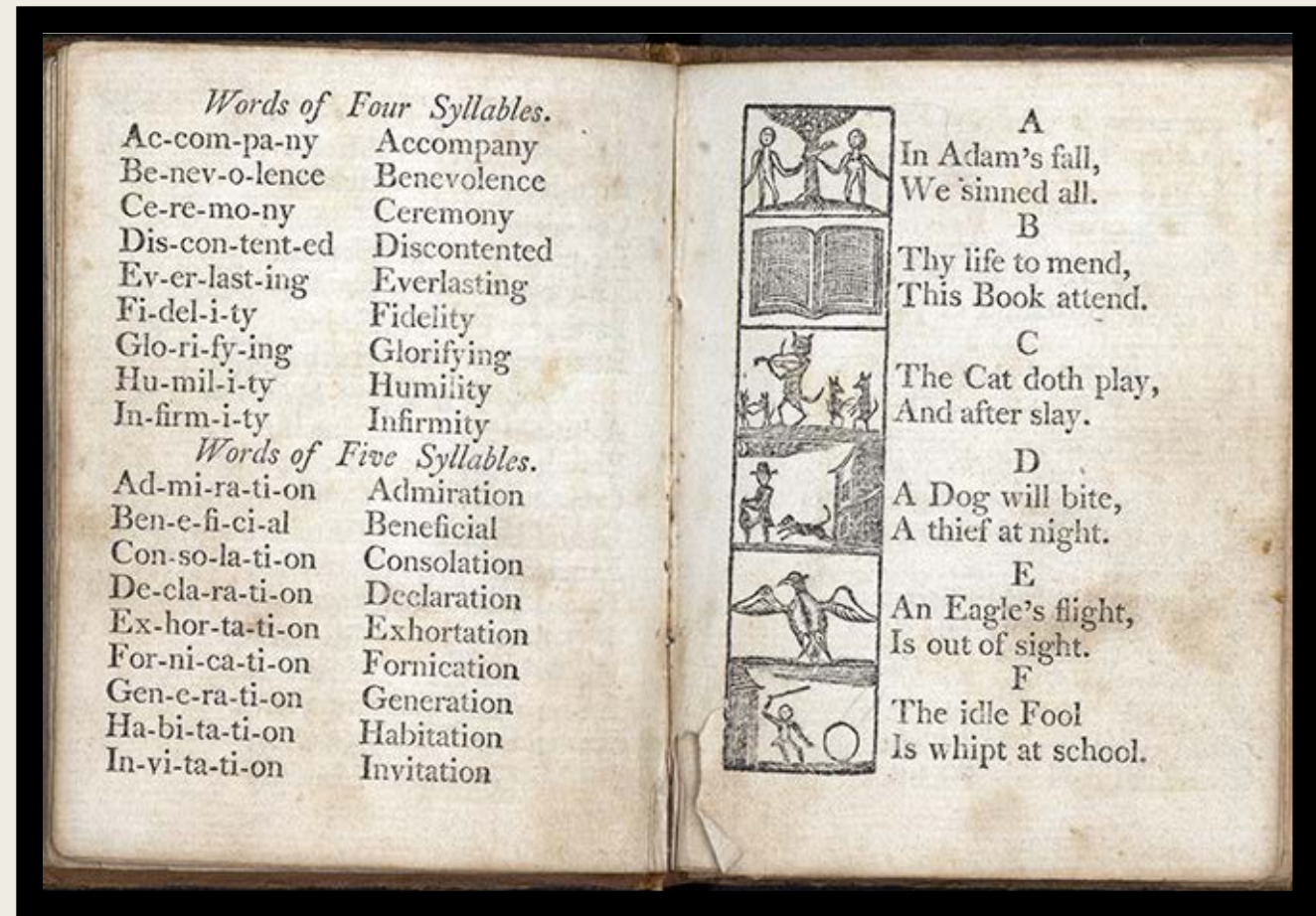


Image from: <https://www.loc.gov/exhibits/books-that-shaped-america/1800-to-1850.html>

# The Legend of Sleepy Hollow

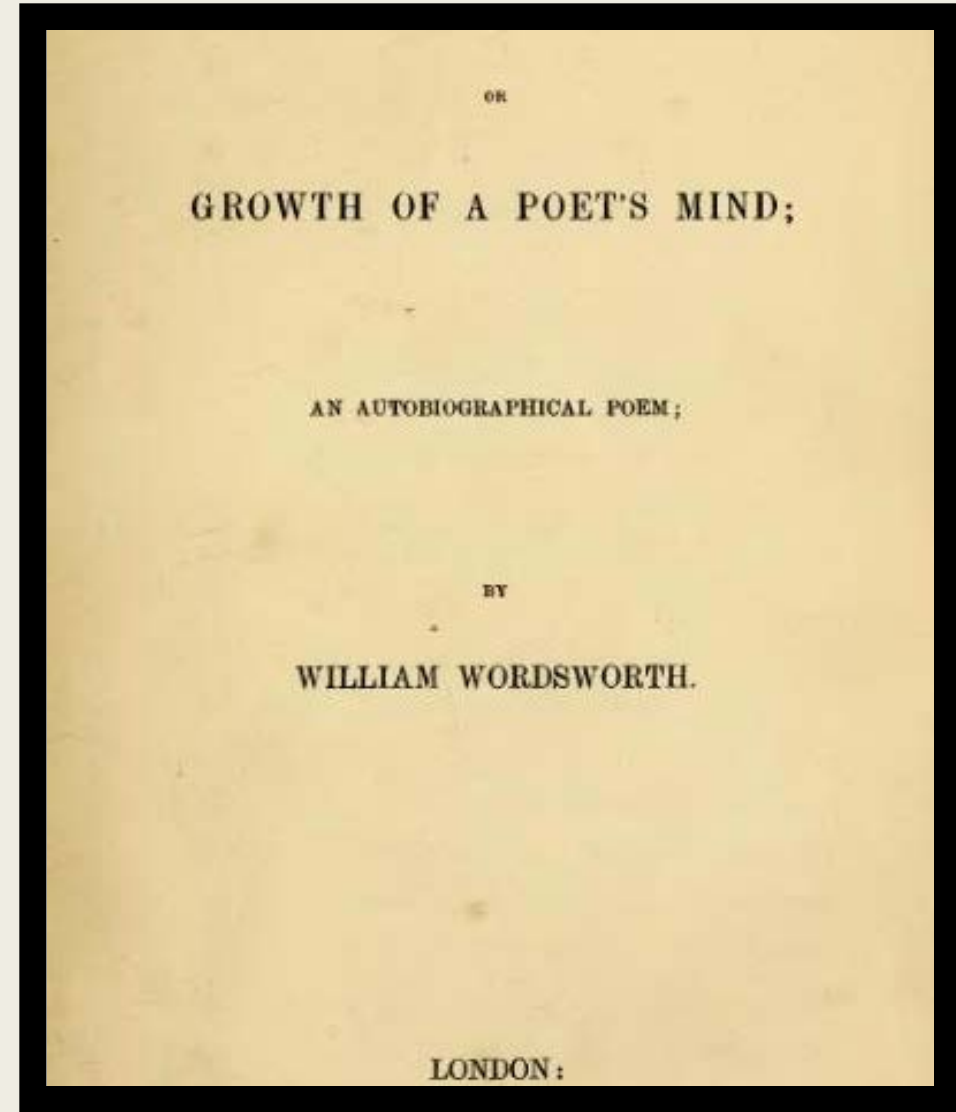
- Written by Washington Irving in 1820, *The Legend of Sleepy Hollow* was one of the first books written by an American author that became popular abroad.
- The storyline of *The Legend of Sleepy Hollow* is grounded in supernatural and fantasy with the famous character of The Headless Horseman. The fantasy of the character fits well into the development of fantasy aspects that was seen during the Romantic period.



Image from: [https://www.loc.gov/exhibits/books-that-shaped-america/1800-1850/Assets/ba0013\\_enlarge.jpg](https://www.loc.gov/exhibits/books-that-shaped-america/1800-1850/Assets/ba0013_enlarge.jpg)

# The Prelude

- Written by William Wordsworth and published after his death in 1850, *The Prelude, or Growth of a Poet's Mind* is an "autobiographical epic poem" that he began writing in 1798 revising throughout the remainder of his life.
- In addition to Romantic works taking on a fantastical element, Romanticism also often brought forth the value of the individual. This long autobiographical work of a Romantic author represents that aspect of Romanticism.



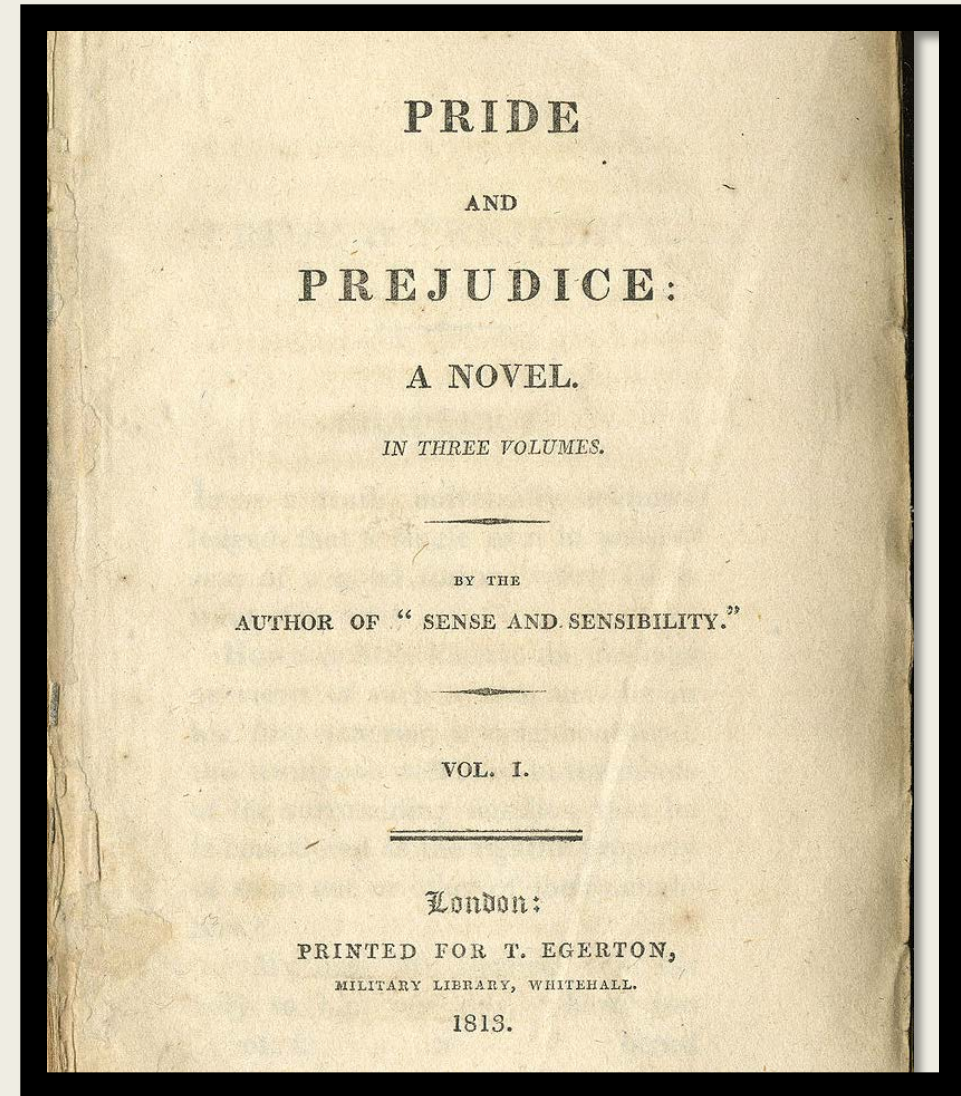
Image

from: [https://en.wikisource.org/w/index.php?title=File:The\\_Prelude,\\_Wordsworth,\\_1850.djvu&page=15](https://en.wikisource.org/w/index.php?title=File:The_Prelude,_Wordsworth,_1850.djvu&page=15)



# Pride and Prejudice

- *Pride and Prejudice* is a novel by Jane Austen published in 1813. It was originally published in three volumes and dealt with the mundane and romantic aspects of a woman's life along with the contrast of classes.
- Jane Austen's authorship of this novel itself embodies the Romantic period as women's roles changed and it became a realistic for women writers to exist. The book was first published anonymously, simply with the indication that a female wrote the book. Furthermore, the intelligent and feminist stance the narrator gives to the main character, Elizabeth shows the growth of the representation of women during the Romantic Period.



Image

from: [https://en.wikipedia.org/wiki/Pride\\_and\\_Prejudice#/media/File:PrideAndPrejudiceTitlePage.jpg](https://en.wikipedia.org/wiki/Pride_and_Prejudice#/media/File:PrideAndPrejudiceTitlePage.jpg)



# Frankenstein

- Also entitled *The Modern Prometheus* this novel by Mary Shelley was written in 1818 and revised in 1831. The book is often considered one of the first science fiction books and tells the story of a scientist successfully animating a man-made human being.
- One of the most well-known women authors of the time, Shelley was born from authors and married a poet. The woman authorship shows the ground-breaking strides females took in authorship during this time period. The magical elements of this work fits well into the ideas of the Romantic period. The gothic nature of the books also are well represented in literature of the Romantic period.

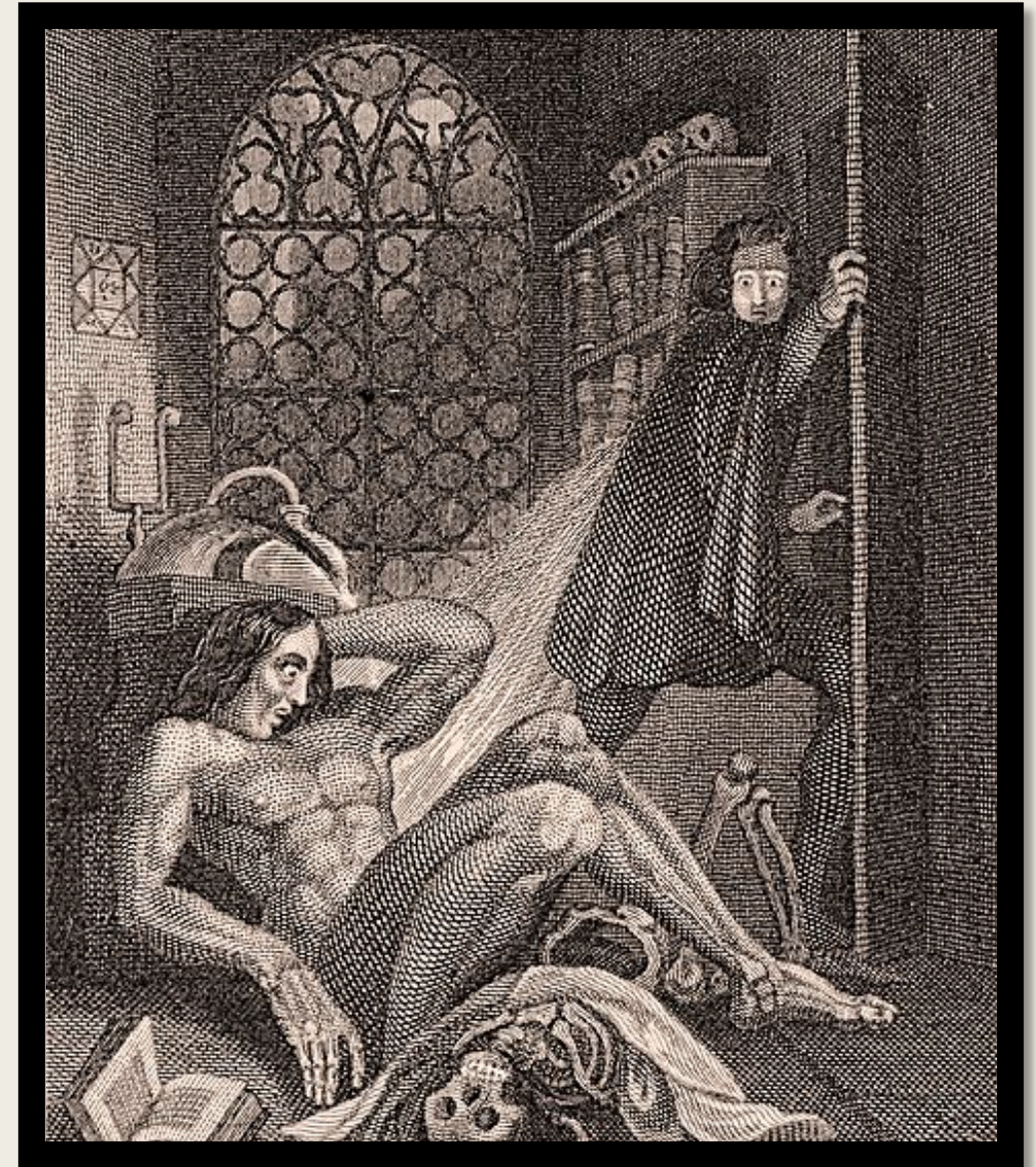
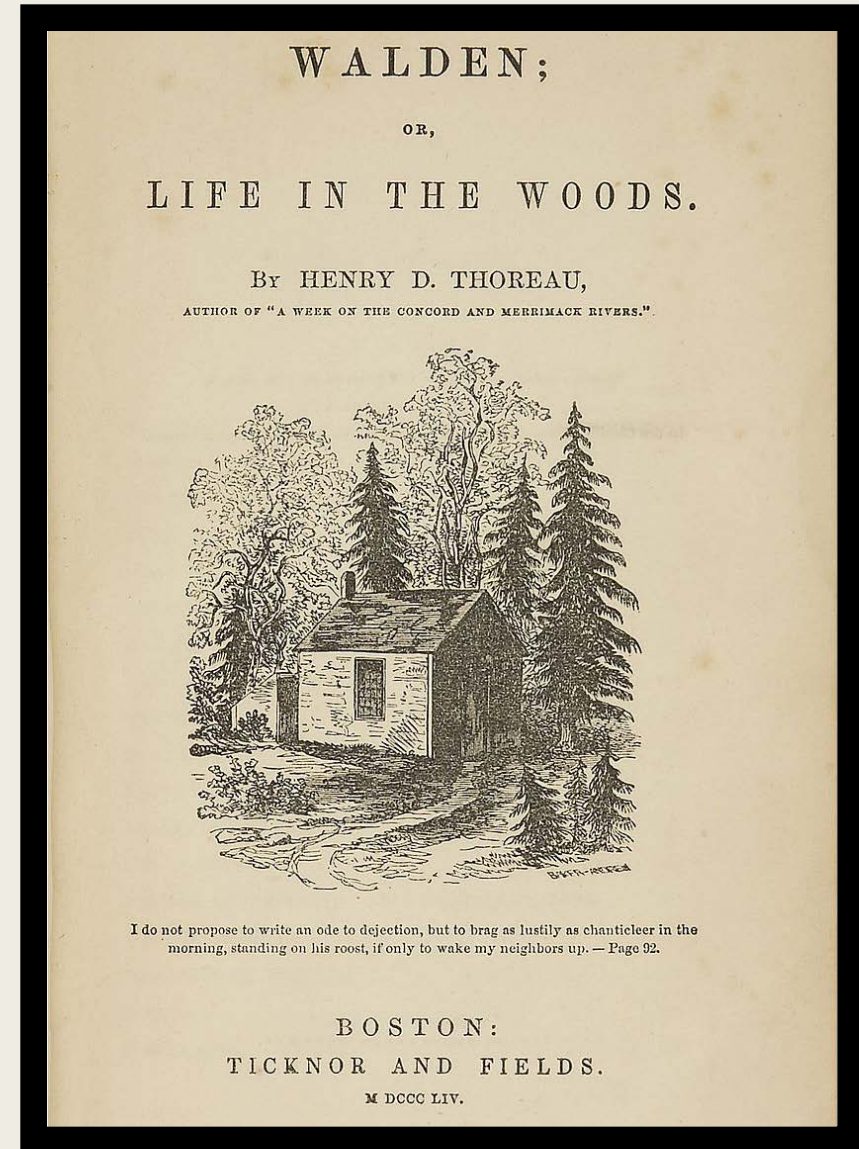


Image  
from: [https://en.wikipedia.org/wiki/File:Frontispiece\\_to\\_Frankenstein\\_1831.jpg](https://en.wikipedia.org/wiki/File:Frontispiece_to_Frankenstein_1831.jpg)

# Walden

- Walden is not a novel as is represented in most of the other examples of the Romantic period, but is a collection of essays published by Henry David Thoreau, an American author in 1854. These essays discuss his thoughts while living in isolation by Walden Pond in Massachusetts from 1845-1847.
- While Thoreau's work also represents Transcendentalism, the writing also fits well in theme and time to the Romantic period. Published at the end of the Romantic period Thoreau emphasizes the value of the individual and beauty in nature.





# The Three Musketeers

- This iconic novel was published in 1844 and written by Alexandre Dumas. The book can be categorized in the genre of historical romance and tells the tale of four heroes and their adventures in France. Dumas wrote two sequels to the novel, in 1845 and 1859 respectively.
- *The Three Musketeers* shows the connections of the Romantic period with the French Revolution and the changing ideals at the time. The book was originally published as a serial, a common publishing strategy during this period.



Image  
from: [https://en.wikipedia.org/wiki/The\\_Three\\_Musketeers#/media/File:Dartagnan-musketeers.jpg](https://en.wikipedia.org/wiki/The_Three_Musketeers#/media/File:Dartagnan-musketeers.jpg)



# Childe Harold's Pilgrimage

- *Childe Harold's Pilgrimage* is a poem by Lord Byron, the first two parts were published in 1812. After printing the first copies sold out in three days. The poem was semi-autobiographical and was inspired by Lord Byron's travels through Europe.
- Lord Byron is often considered one of the main and iconic writers of the Romantic period and *Childe Harold's Pilgrimage* is a great example as to why. This poem is the beginning of a character style entitled the 'Byronic hero' which encapsulated masculinity and the conflicted troubled hero that is still seen in stories today.



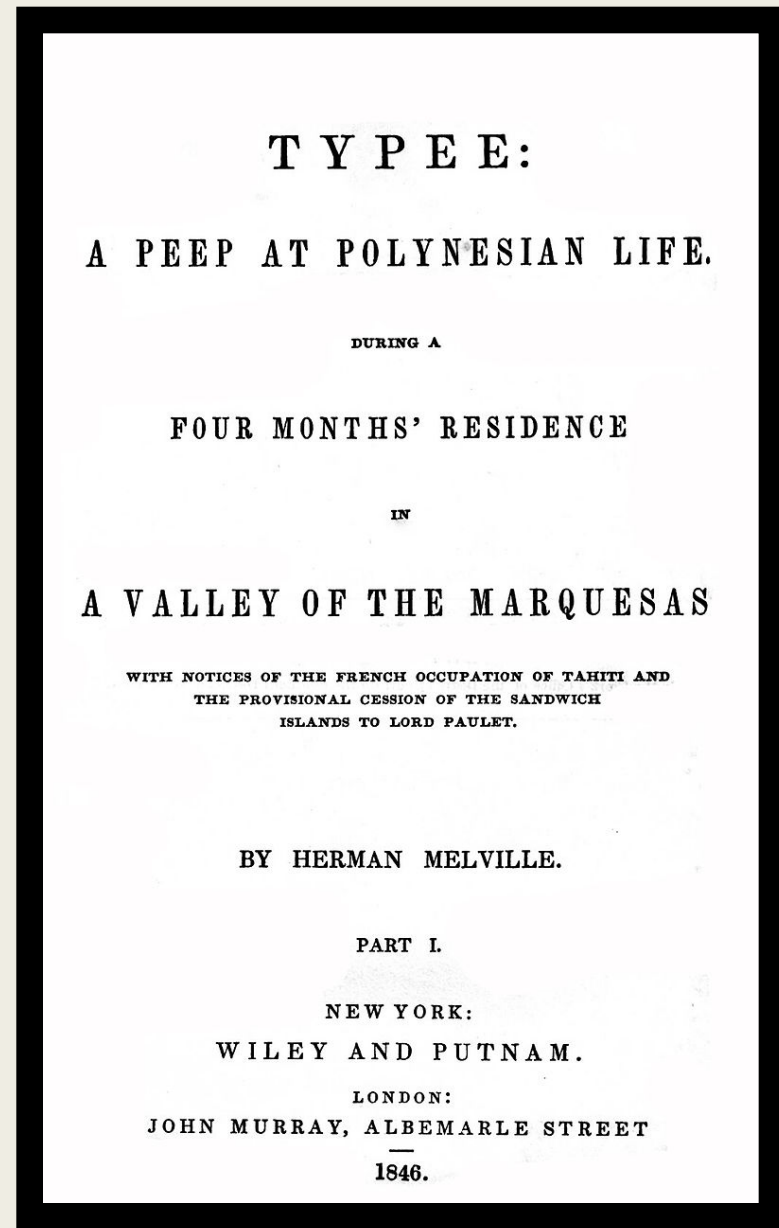
Image

from: [https://en.wikipedia.org/wiki/Childe\\_Harold%27s\\_Pilgrimage#/media/File:Lord\\_Byron\\_-\\_Childe\\_Harold%27s\\_Pilgrimage\\_-\\_Dugdale\\_edition.jpg](https://en.wikipedia.org/wiki/Childe_Harold%27s_Pilgrimage#/media/File:Lord_Byron_-_Childe_Harold%27s_Pilgrimage_-_Dugdale_edition.jpg)

# Typee

- *Typee: A Peep at Polynesian Life* is a travelogue by Herman Melville, an American author during the Romantic period. The book was first published in 1846 and is inspired by the author's travels through the South Pacific.

- The book denounces the category of *novel* in the introduction and describes itself as a travelogue. The book has a large focus on nature, a common theme in the Romantic period, especially for American authors. The book also focuses on mundane societal problems such as seen in *Pride and Prejudice*. Taking a closer look at society, rigid traditions, and the individual are new elements of accepted writing during the Romantic period.

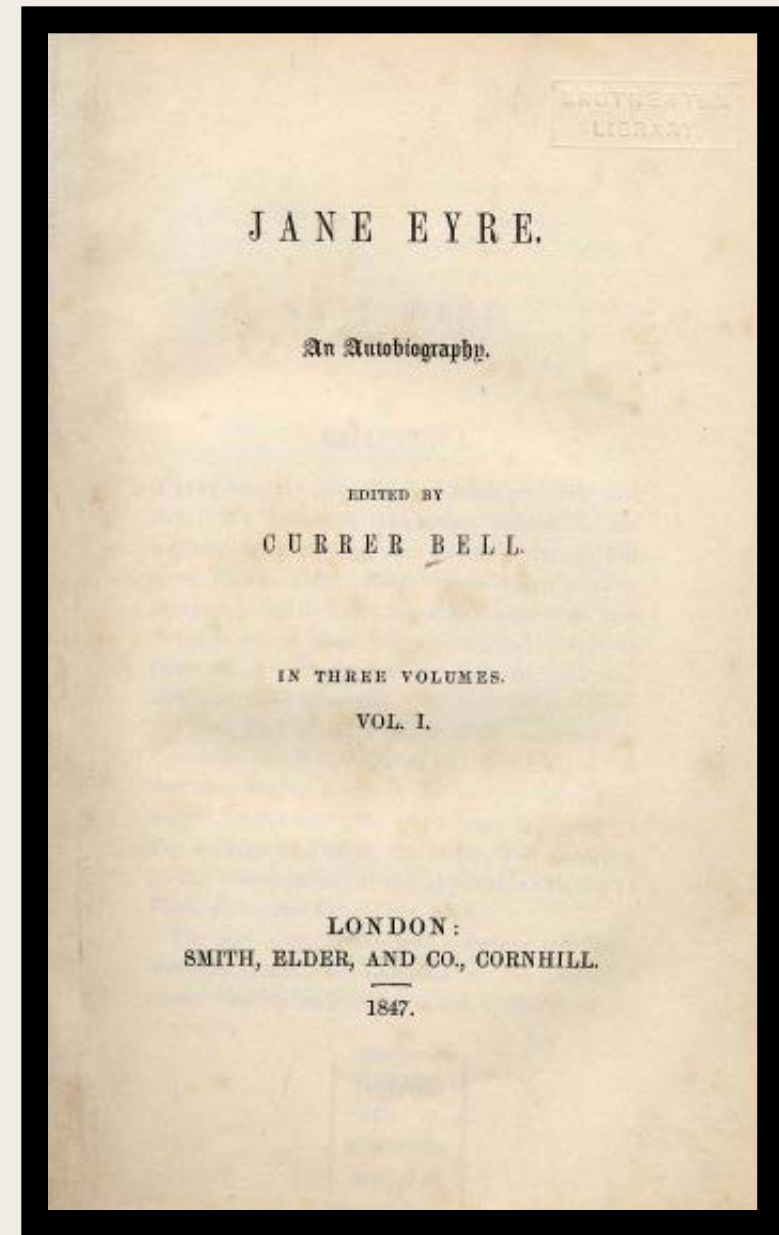




# Jane Eyre

- *Jane Eyre* is a novel written by Charlotte Bronte in 1847. It was originally published under a pseudonym of Currer Bell. The novel focuses on the life of the title character, Jane and her relationship with a married man.

- The fact that *Jane Eyre* was originally published under a pseudonym fits well into the time period and parallels other books written by women in the time period. The novel looks at the role that women play in society, focusing on the realistic everyday life of a woman juxtaposed with fairytale elements seen in Jane's imagination and the word choices used throughout the novel.



Image

from: [https://en.wikipedia.org/wiki/Jane\\_Eyre#/media/File:Jane\\_Eyre\\_title\\_page.jpg](https://en.wikipedia.org/wiki/Jane_Eyre#/media/File:Jane_Eyre_title_page.jpg)

# Sources

- Books That Shaped America 1800 to 1850. (n.d.). Retrieved November 14, 2016, from <https://www.loc.gov/exhibits/books-that-shaped-america/1800-to-1850.html>
- Fairytale and realism in Jane Eyre. (2014). Retrieved November 14, 2016, from <https://www.bl.uk/romantics-and-victorians/articles/jane-eyre-fairytale-and-realism>
- Lord Byron (George Gordon). (n.d.). Retrieved November 14, 2016, from <https://www.poetryfoundation.org/poems-and-poets/poets/detail/lord-byron>
- Jane Eyre. (n.d.). Retrieved November 14, 2016, from <https://www.britannica.com/topic/Jane-Eyre-novel-by-Bronte/images-videos>
- Mary Wollstonecraft Shelley. (n.d.). Retrieved November 14, 2016, from <https://www.britannica.com/biography/Mary-Wollstonecraft-Shelley/images-videos>
- Pride and Prejudice. (n.d.). Retrieved November 14, 2016, from <https://www.britannica.com/topic/Pride-and-Prejudice>
- Romanticism: The Romantic Age. (n.d.). Retrieved November 14, 2016, from <http://www.indepthinfo.com/history/romanticism.htm>
- The Prelude poem by Wordsworth. (n.d.). Retrieved November 14, 2016, from <https://www.britannica.com/topic/The-Prelude>
- Typee. (n.d.). Retrieved November 14, 2016, from <https://www.britannica.com/topic/Typee>
- Typee as a Romantic Work. (1999). Retrieved November 14, 16, from <http://www.geocities.ws/kmseniorthesis/Typee.html>
- Walden. (n.d.). Retrieved November 14, 2016, from <https://www.britannica.com/topic/Walden>