

# Thanet Parkway Railway Station

## Public Consultation Report



August 2017

**Alternative formats:**

For any alternative formats of the consultation material, please email [alternativeformats@kent.gov.uk](mailto:alternativeformats@kent.gov.uk) or call 03000 421553 (text relay service number 18001 03000 421553). This number goes to an answering machine, which is monitored during office hours.

# Contents

Executive Summary.....	2
1. Introduction and Background.....	3
2. The Decision Making Process .....	4
3. The Consultation Process .....	4
4. Stakeholder Identification .....	4
5. Promotion – Publicity.....	5
6. Accessibility and Interest.....	8
7. Respondents .....	9
8. Consultation Responses.....	15
9. Letters/emails received.....	28
10. Organisation responses.....	29
11. Conclusion.....	31
APPENDIX A – Social Media Timetable (Twitter) .....	32
APPENDIX B – Geographical spread of questionnaire respondents in Kent.....	33
Geographical spread of questionnaire respondents in Thanet.....	34
APPENDIX C - Thanet Parkway Consultation Questionnaire.....	35

# Executive Summary

Kent County Council is proposing to build a new parkway railway station in East Kent; Thanet Parkway. This report outlines the results of a pre-planning application consultation which ran from 25<sup>th</sup> January – 19<sup>th</sup> March 2017. The consultation asked for views on the outline design of the station, in particular the proposed station facilities, look of the station, road access, car parking facilities and public transport, walking and cycling access, receiving a total of 355 responses. The intention was to gather feedback from the consultation to feed into the development of the station design.

Throughout the eight week consultation period, a number of consultation materials were made available online and in hard copy upon request. In addition, six exhibition events were held throughout East Kent with a total of 394 people attending. The consultation was also promoted on social media, local press and via email to stakeholders.

A majority of consultation responses showed general agreement with the proposals; however, there were a number of concerns raised regarding detail and design of the proposed station, including the proposed road access arrangements, pedestrian access route and plans for the station to be unstaffed. In addition, there were a number of objections received from local residents, many of whom expressed their general disapproval for the station.

Key stakeholders were broadly supportive of the proposed Thanet Parkway railway station, but a number of comments were made in relation to their specific area of interest. For example, the Kent branch of Campaign to Protect Rural England had concerns regarding the visual impact of the station on the generally rural landscape. Kent Association for the Blind also provided helpful comments for consideration when finalising the design to ensure facilities are accessible for those with disabilities.

The results of the consultation will be considered in detail as the proposal is developed. Once the design has been finalised, a planning application will be submitted.

# Consultation Report

## 1. Introduction and Background

Since 2010 Kent County Council has been proposing to build a new parkway railway station in East Kent. The new Thanet Parkway will be located on the existing Ashford International to Ramsgate line, south of the former Manston Airport site and just to the west of the village of Cliffsend. It will be sited between Minster and Ramsgate railway stations, and will be served by both Mainline and High Speed trains.

The proposed station will increase employment opportunities for Thanet residents by providing improved rail access to London as well as other locations in the county such as Canterbury and Ashford. Thanet Parkway will encourage growth in Thanet and East Kent, and will also cope with the growth in rail usage from existing and future communities.

Project development is currently at outline design stage. The station has been designed with two platforms, each fitted with lighting columns that host CCTV cameras, customer information displays, a passenger help point and waiting shelters. Lifts and stairs will be provided with a footbridge providing a connection between platforms. The station forecourt will include two ticket vending machines, a shelter and bus passenger information.

Parking will be provided for 300 cars (including 16 disabled bays), motorcycles and 40 cycle parking spaces. Electric vehicle charging points will also be provided. A set down area will be provided for buses, taxis and passenger drop off.

To encourage use of the station, a new direct access road will be provided. Pedestrian and cycle access is proposed from Cliffsend village. However, these accesses are subject to further design refinements as the design progresses.



While it is anticipated that the station initially will be unstaffed, the design does allow for a station building to be accommodated in the future should it be deemed appropriate. This could provide a covered waiting area, booking office, staff accommodation and public toilets.

## **2. The Decision Making Process**

Following the consultation report being published, the proposals will be amended, taking into consideration comments raised through the consultation. This consultation report along with a project update will then be taken to Environment and Transport Cabinet Committee to provide an update on the proposal.

## **3. The Consultation Process**

### Previous Consultation

We initially held an eight week public consultation on the high level design, impacts and benefits of Thanet Parkway from 2<sup>nd</sup> February to the 27<sup>th</sup> March 2015. Overall, 492 questionnaire responses were received in response to the initial consultation and the feedback gathered helped to shape the outline design and Environmental Impact Assessment (EIA) work. Since this consultation, KCC's project team has engaged with key stakeholders, including impacted landowners affected by the proposals, Thanet District Council, Southeastern and Network Rail to gather further feedback and develop the outline design.

### This Consultation

This consultation was held to inform the submission of a planning application for the new station with the intention to gather views and opinions on the outline design of the station, including the proposed station facilities, the look of the station, road access, car parking facilities and access by public transport, walking and cycling, and the Equality Impact Assessment (EqIA). Details of the latest design were made available in the form of a consultation booklet which was available for the public to comment on for an eight-week period between Wednesday 25<sup>th</sup> January and Sunday 19<sup>th</sup> March 2017.

The consultation also allowed respondents the opportunity to provide general comments and views on the project. All consultation documents were available online and hard copies were available upon request.

## **4. Stakeholder Identification**

Stakeholders were identified from an initial stakeholder mapping exercise, which was revisited and further developed following the initial consultation in 2015.

During the previous consultation, a number of individuals and organisations requested to be added to the Thanet Parkway mailing list and to be kept updated on

the progress of the project. They were contacted once the pre-planning consultation was launched on the 25<sup>th</sup> January 2017.

## 5. Promotion – Publicity

A range of promotional activities were undertaken to publicise the consultation and reach a diverse range of stakeholders.

### 5.1. Pre-consultation engagement

Pre-consultation engagement was conducted with local Parish and Town Council's where representatives from the Thanet Parkway Project Team attended the following council meetings:

<b>Kent County Council Member Briefing</b>	10 <sup>th</sup> January
<b>Thanet District Council</b>	10 <sup>th</sup> January
<b>Minster Parish Council</b>	10 <sup>th</sup> January
<b>Acol Parish Council</b>	16 <sup>th</sup> January
<b>Broadstairs Parish Council</b>	23 <sup>rd</sup> January
<b>Dover District Council</b>	25 <sup>th</sup> January
<b>Ramsgate Town Council</b>	8 <sup>th</sup> February
<b>Cliffsend Parish Council</b>	9 <sup>th</sup> February
<b>Manston Parish Council</b>	13 <sup>th</sup> February

A presentation by the project team was also given to the Thanet & East Kent Chamber of Commerce on Thursday 9<sup>th</sup> March 2017.

### 5.2. Press Release/Newspaper coverage

A press release was issued at the launch of the consultation and articles on the consultation were published by the following newspapers.

25/01/2017 Kent on Sunday (web)
25/01/2017 Kent & Sussex Courier (web)
26/01/2017 Kent Online (web)
27/01/2017 Isle of Thanet Gazette
29/01/2017 Kent on Sunday (newspaper)
01/02/2017 Kent Extra (Thanet)

The press release was also covered by KMFM and BBC Radio Kent.

### 5.3. Consultation launch

In order to launch the consultation, the following publicity activities were undertaken:

- An invitation was sent to 4,894 members of the KCC consultation database who had expressed an interest in this type of consultation.

- An invitation was sent to all those who had signed up to the project mailing list during the previous initial consultation.
- An email was sent to all Kent County Council Members and all were provided with a hard copy of the consultation booklet.
- A publicity email was sent to a range of stakeholders (including Southeastern and Network Rail, local businesses, disability and resident groups, and local service providers).
- A publicity email was sent to environmental groups including the Environment Agency, Natural England, Historic England and Campaign to Protect Rural England.
- Emails were also sent to a range of Universities, Colleges and young people's groups across Thanet, two of which requested and were provided with hard copies of the consultation material.
- Hard copies of the consultation material were also made available in libraries across East Kent as well as both Dover and Thanet Gateways.

#### 5.4. Consultation events

During the consultation period, six exhibition events were held across Thanet where members of the Thanet Parkway project team were present to answer questions and listen to the views of members of the public.

Venue	Date	Time	Number of Attendees
<b>Cliffsend Village Hall</b> <i>Foads Lane, Cliffsend, Ramsgate, CT12 5JG</i>	07/02/2017	15:00-20:00	109
<b>Discovery Park Enterprise Zone</b> <i>Magellan Suite, Innovation House, Discovery Park, CT13 9FF</i>	08/02/2017	10:00-17:00	74
<b>Acol Village Hall</b> <i>The Street, Acol, CT7 0JA</i>	20/02/2017	15:00-20:00	18
<b>Minster-in-Thanet Library</b> <i>4A Monkton Road, Minster, Ramsgate, CT12 4EA</i>	23/02/2017	14:00-17:30	44
<b>Ramsgate Railway Station</b> <i>Ticket Hall, Ramsgate, CT11 7RE</i>	28/02/2017	15:00-19:30	66
<b>Cliffsend Village Hall</b> <i>Foads Lane, Cliffsend, Ramsgate, CT12 5JG</i>	02/03/2017	15:00-20:00	83
<b>Total attendees</b>			<b>394</b>



Figure 1 - Exhibition Stand at Ramsgate Railway Station



Figure 2 - Exhibition Stand at Discovery Park Enterprise Zone

### 5.5. Social media updates

KCC's Twitter page was extensively used to promote the consultation throughout the eight week period. Twelve tweets were planned for varying stages of the consultation, which included reminders of consultation events. Examples are shown below, and a timetable of social media posts is available in **Appendix A**.

#### Twitter 'consultation launch' update

"KCC is launching a second public consultation for Thanet Parkway Railway Station. Give us your views <http://bit.ly/2kdYg5l>"

#### Twitter 'public event' update

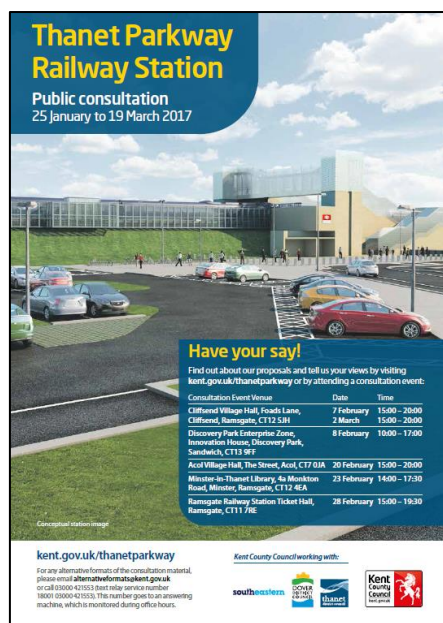
"Come and visit us today. Ask questions and tell us your views on Thanet Parkway Railway Station. Cliffsend Village Hall 3pm to 8pm"

#### Twitter 'consultation close' update

"Last chance to tell us your views on Thanet Parkway Railway Station. Find out more and complete our survey here <http://bit.ly/2kdYg5l>"



Promotional posters and postcards were available online and upon request. Postcodes were also letter dropped within and around Cliffsend village.



## 6. Accessibility and Interest

### 5.6. Key document downloads (as of 20<sup>th</sup> April 2017):

The table below reports the number of times each document was downloaded from the [kent.gov.uk/thanetparkway](http://kent.gov.uk/thanetparkway) website.

Document	Number of downloads
Thanet Parkway Consultation Booklet (PDF version)	582
Thanet Parkway Consultation Booklet (Word version)	102
Equality Impact Assessment (PDF version)	79
Equality Impact Assessment (Word version)	62
Promotional Postcard	81
Promotional Poster	100
Consultation Questionnaire (PDF version)	97
Consultation Questionnaire (Word version)	94
Thanet Parkway – Proposed Site Plan	262
Exhibition Banners	44
Alternative Options Analysis Report	151
Potential Environmental Impacts Report	101
Business Case – Economic Appraisal Report	70
Phase 1 Habitat and Bat Roost Assessment Report	46
Wintering Bird Report	57
Bat Emergence and Activity Survey Report	42
2015 Consultation Report	51
2015 Consultation Report – Appendices	41
2015 Consultation Report – Executive Summary	46

## 7. Respondents

In total, 319 individuals or organisations responded to the consultation via the questionnaire, of which 95 responded by hard copy and 224 were submitted online. Four of the online responses were from parish or town councils, whilst another parish council chose to respond to the consultation separately in the form of a letter. A further 9 letters and 27 emails were received in response to the consultation, making a total of 355 responses.

The tables below show the distribution of questionnaire responses. The letter and email responses are analysed separately in section 9 of this report.

### Respondent profile: responding on behalf of...

	<u>Number of questionnaire responses</u>	<u>Percentage</u>
<b>A Cliffsend Resident</b>	94	29%
<b>A resident from somewhere else in Kent</b>	160	50%
<b>A representative of a local community group or residents association</b>	2	1%
<b>On behalf of a Parish/Borough/District Council in an official capacity</b>	4	1%
<b>A Parish/District or County Councillor</b>	8	3%
<b>A local business owner</b>	9	3%
<b>On behalf of a charity, voluntary or community sector organisation (VCS)</b>	6	2%
<b>A visitor to Thanet</b>	4	1%
<b>Other</b>	31*	10%

*From Q1: Please tell us in what capacity you are completing this questionnaire...*

\*21 of those who responded with 'Other' were residents from elsewhere in Thanet.

A map showing the location of respondents from Kent is appended to this report (**Appendix B**). The map shows the majority of respondents were from the Thanet area; however, a number of representations were also made from elsewhere in Kent.

Eight 'about you' questions were asked at the end of the questionnaire. In common with many consultations, respondents tended to be male and over the age 50.

### Respondent profile: Gender

	<u>Respondents</u>	<u>Thanet Population*</u>	<u>Kent Population*</u>
<b>Male</b>	64%	48.1%	49%
<b>Female</b>	34%	51.9%	51%
<b>Prefer not to say</b>	2%	N/A	N/A

\*2011 Census data

*Note: 7 people preferred not to say.*

*From Q12: Are you...?*

There was a relative overrepresentation of males in the respondents compared to the Thanet population as a whole.

**Respondent profile: Disability**

	<u>Respondents</u>	<u>Thanet Population*</u>	<u>Kent Population*</u>
<b>Yes</b>	10%	23.4%	17.6%
<b>No</b>	83%	76.6%	82.4%
<b>Prefer not to say</b>	7%	N/A	N/A

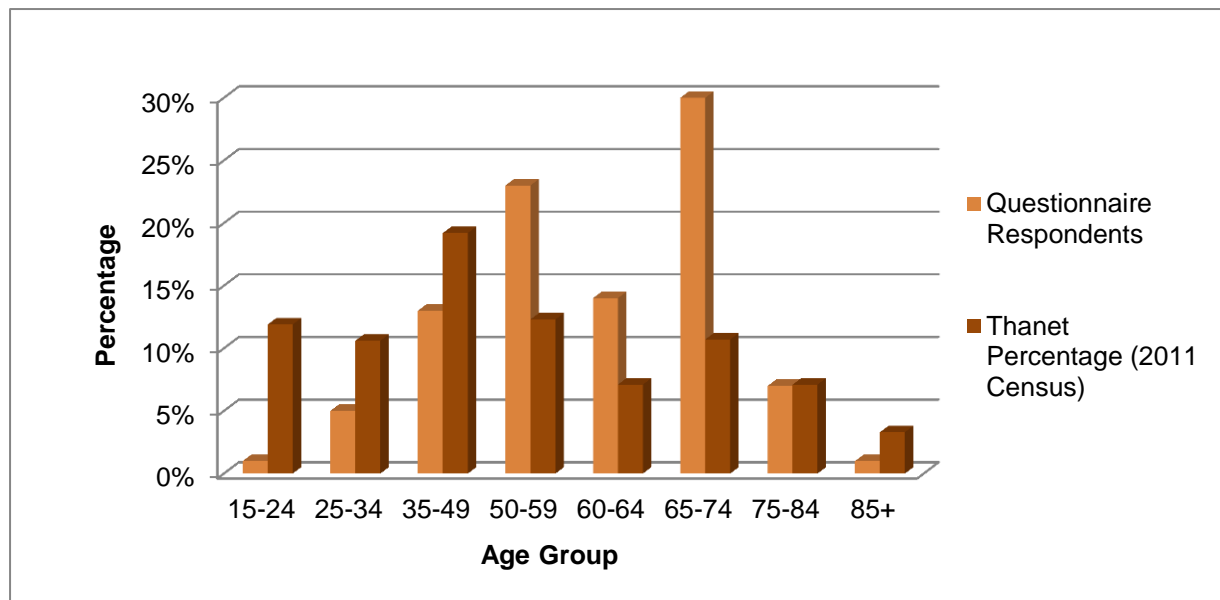
\*2011 Census data

*Note: 21 respondents preferred not to say.*

*From Q15: Do you consider yourself to be disabled as set out in the Equality Act 2010?*

The reported data suggests that the respondents underrepresented disability, although 7% of people preferred not to answer the question.

**Respondent profile: Age**



*Note: Population aged 15 and over used for comparison, no respondents to this consultation were aged 15 or under and 17 preferred not to say.*

*From Q13: Which of these age groups applies to you?*

The data shows that there was a significant underrepresentation of younger people from the 15-24 and 25-34 age groups. Conversely, there was a relative overrepresentation of older people responding to the consultation in the age groups of 50 to 74. However, this is typical of the experience of other consultations of this nature.

## Respondent profile: Ethnicity

	<u>Respondents</u>	<u>Thanet Population*</u>	<u>Kent Population*</u>
<b>White English/Welsh/Scottish/Northern Irish/British</b>	84%	90.43%	89.06%
<b>White: Irish</b>	1%	0.76%	0.70%
<b>White: Gypsy or Irish Traveller</b>	0%	0.14%	0.32%
<b>White: Other</b>	3%	4.20%	3.59%
<b>Mixed: White and Black Caribbean</b>	0%	0.54%	0.43%
<b>Mixed: White and Black African</b>	0%	0.25%	0.20%
<b>Mixed: White and Asian</b>	0%	0.45%	0.51%
<b>Mixed: Other</b>	0%	0.40%	0.36%
<b>Asian or Asian British: Indian</b>	0%	0.55%	1.24%
<b>Asian or Asian British: Pakistani</b>	0%	0.14%	0.16%
<b>Asian or Asian British: Bangladeshi</b>	0%	0.13%	0.23%
<b>Asian or Asian British: Other</b>	0%	0.34%	1.21%
<b>Black or Black British: Caribbean</b>	0%	0.18%	0.22%
<b>Black or Black British: African</b>	0%	0.44%	0.79%
<b>Black or Black British: Other</b>	0%	0.06%	0.10%
<b>Arab</b>	0%	0.09%	0.10%
<b>Chinese</b>	0%	0.34%	0.41%

*Note: 31 respondents preferred not to say*

*From Q16: To which of these ethnic groups do you feel you belong?*

In general, the response rates from different ethnic groups are broadly representative of the Thanet and Kent population as a whole.

## Respondent profile: Organisations

In total there were two responses submitted by a representative of a local community group or residents association, four on behalf of a Parish/Borough/District Council in an official capacity and six on behalf of a charity, voluntary or community sector organisation (VCS).

The organisations that responded online were as follows:

- Ramsgate Town Council
- Monkton Parish Council
- Walmer Parish Council
- Kent Association for the Blind
- Thanet Cycle Forum
- Cliffsend Parish Council
- Campaign to Protect Rural England - Kent Branch (CPRE Kent)
- The Ramsgate Society and Ramsgate Conservation Area
- Advisory Group which has recently formed The Ramsgate Heritage and Design Forum
- Member of Ramsgate Chair of Liverpool/Conversation and Heritage Group Lawn/Adelaide Gardens Resident Association
- The Broadstairs Society
- Monkton Residents Association

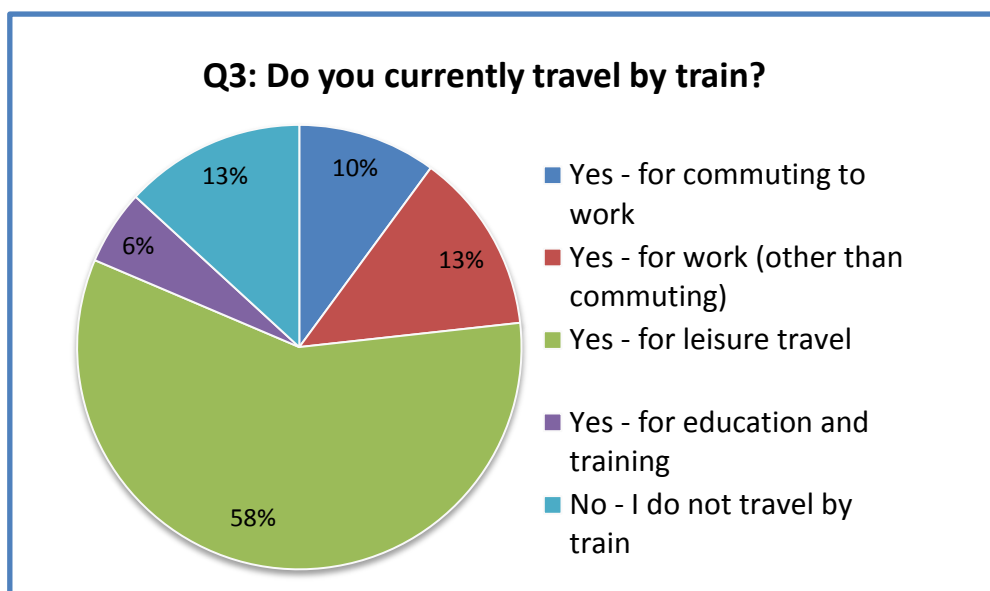
*Note: One response identified themselves as a local community group or residents association but did not disclose on behalf of which particular group they were responding.*

Historic England, Dover District Council, Manston Parish Council, and Acol Parish Council responded in the form of a letter. These were analysed separately to the online responses and further information can be found in section 9.

### **Respondent profile: Rail usage**

The consultation questionnaire included two questions which asked respondents about their existing rail usage. Both questions allowed respondents to select all categories that applied to them.

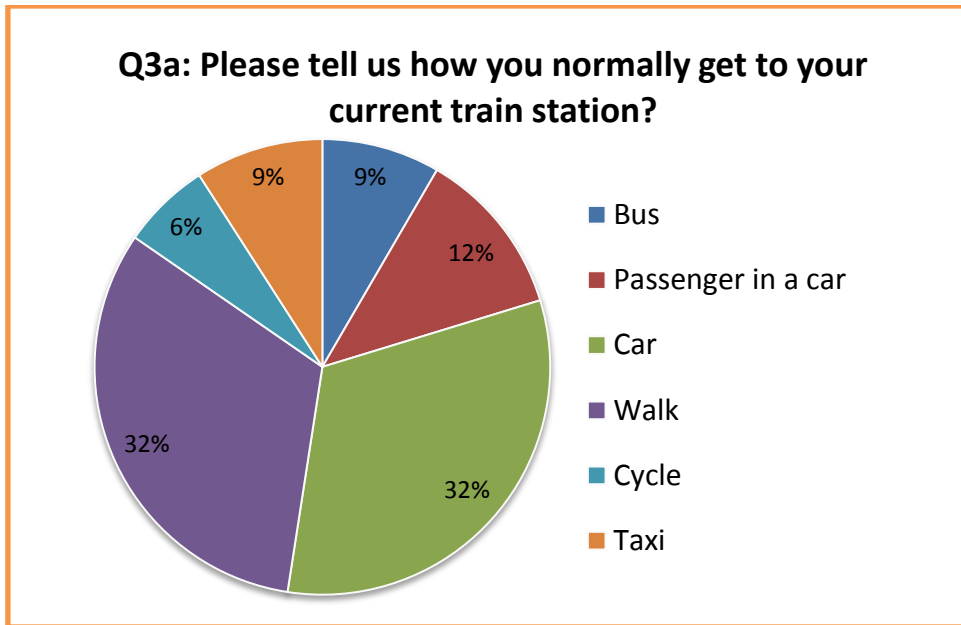
#### **Question 3: Do you currently travel by train?**



*From Q3: Do you currently travel by train?*

Of those who responded to this question, a number selected more than one option; however, the majority said they currently travel by train for leisure (58%). This included 21 respondents who also currently commute to work by rail. However, 13% of respondents said they do not currently travel by train for any purpose.

Question 3a: Please tell us how you normally get to your current train station?



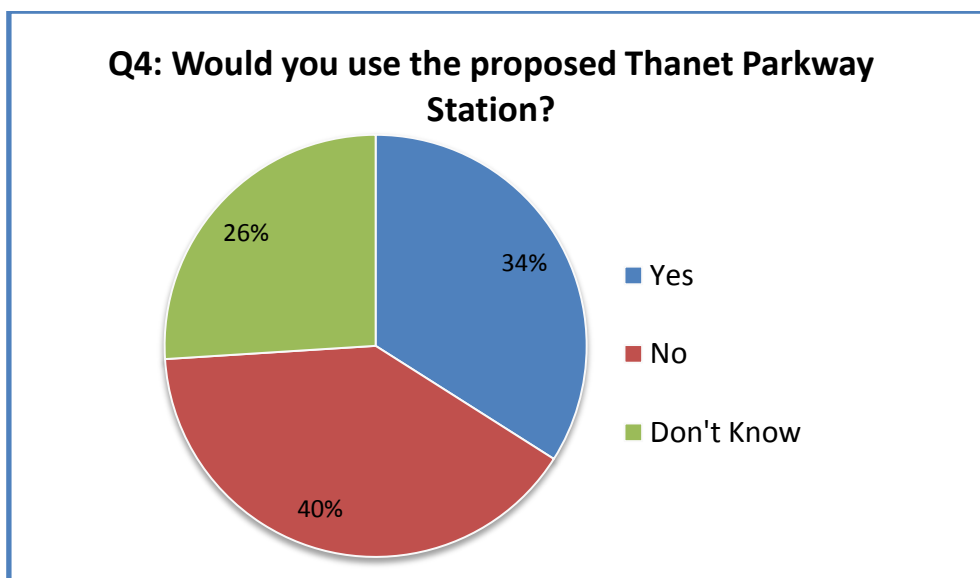
*From Q3a: If you have answered ‘Yes’ to Q3, please tell us how you normally get to your current train station?*

For those who answered question 3 stating they currently travel by train, the subsequent question asked how they tend to travel to their current train station. Once again, a number of respondents selected more than one category; however, the majority of respondents selected either car (32%) or walk (32%).

**Respondent profile: Use of Thanet Parkway railway station**

The consultation questionnaire also asked respondents about their expected use of the proposed Thanet Parkway railway station.

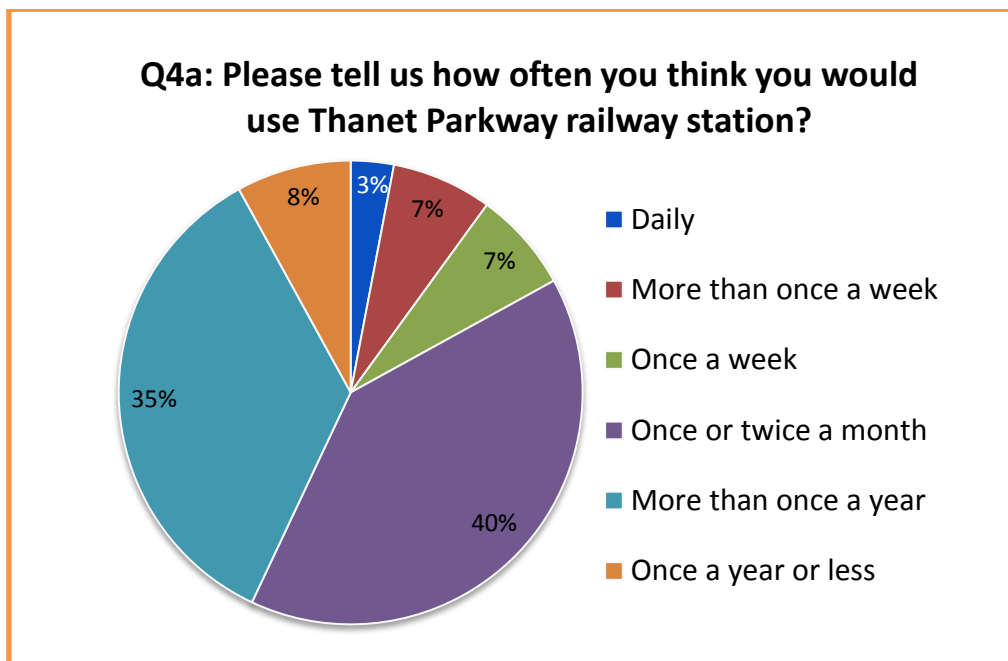
Question 4: Would you use the proposed Thanet Parkway Station?



*From Q4: Would you use the proposed Thanet Parkway railway station?*

A total of 306 responses were received to this question, which demonstrated a mixture of views. The slight majority of respondents (40%) answered 'No', but this could be due to a number of different reasons, such as them living within walking distance to an existing station or because they do not currently need to travel by train. 26% of respondents to this question indicated they did not know if they would use the proposed Thanet Parkway Station. Once again, this could be due to a variety of reasons.

Question 4a: Please tell us how often you think you would use Thanet Parkway railway station?



*From 4a: If you have answered 'Yes' to Q4, please tell us how often you think you would use Thanet Parkway railway station?*

The respondents who stated they would use the proposed station were then asked how often they felt they would use Thanet Parkway to access rail services. A total of 117 people responded to this question which included a proportion of those who answered 'Don't Know' to the previous part of question 4. The majority of those who responded estimated that they would use the station either once or twice a month or more than once a year (70%).

17% stated they would use Thanet Parkway once a week or more. This number could reflect the relatively higher proportion of respondents who report using the train for leisure or those using the train for work.

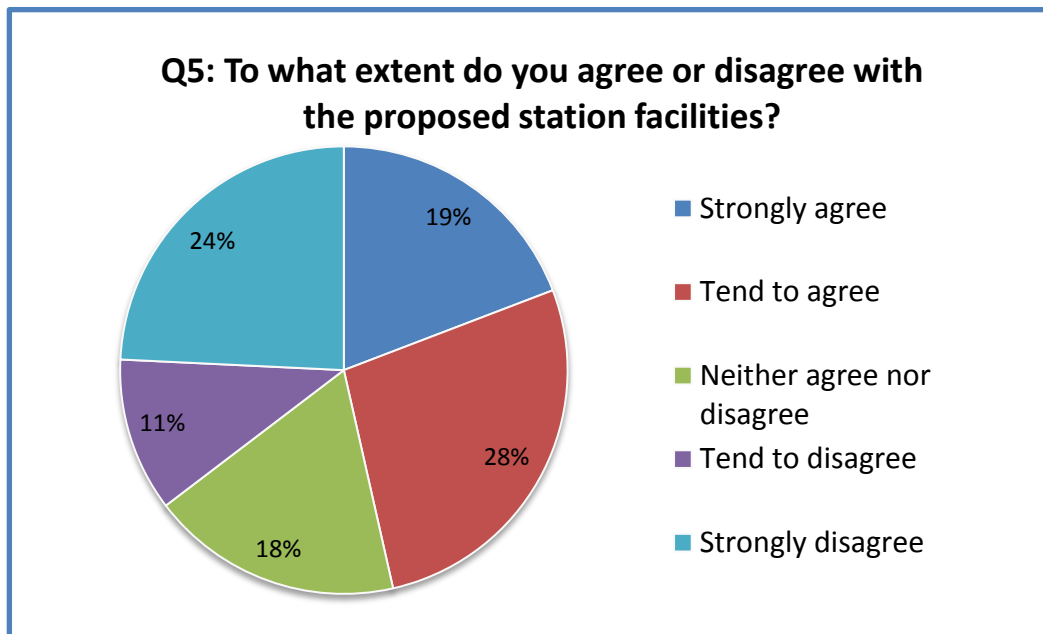
## 8. Consultation Responses

The consultation questionnaire is available in **Appendix C** of this report.

### 8.1 Questionnaire Analysis

#### 8.1.1. Question 5: Proposed Station Facilities

A total of 309 people gave their views on the proposed station facilities (Waiting shelters, information points, ticket machines, lift and help points for remote assistance). Respondents agreed with the proposed facilities, with 47% selecting either 'tend to agree' or 'strongly agree'. In contrast, a total of 35% either tended to disagree or strongly disagreed with the proposed station facilities, and the remainder of those who responded to this question selected 'neither agree nor disagree' (18%).



*From Q5: To what extent do you agree or disagree with the proposed station facilities (Waiting shelters, information points, ticket machines, lift and help points for remote assistance)?*

Of those who responded to question 5 of the consultation questionnaire, 178 made a comment on the proposed station facilities. There were a range of views expressed but most comments were in relation to concerns about the minimal facilities proposed and requests for additional facilities to be included within the design.

Respondents also used this question to comment on their general agreement or disagreement with the proposed station. However, the most common themes were concerns regarding the station being unstaffed, the safety of station users, threat of vandalism, and requests for inclusion of additional waiting shelters and/or heated waiting rooms, toilets and retail facilities. The quotes below are provided to illustrate the differing views received:



“I believe the lack of toilets and disabled facilities detracts from the ambition for this new station to be a ‘hub’. Given the remote location and the occasional disruption to train services and lack of working toilet facilities on trains, this appears to be more in the style of a rural halt type station.”

*A Parish/District or County Councillor*

“There may be some concern about an unstaffed station, but I have seen this work very successfully in other areas. Assurance of maintenance of the facilities, I would think, is important.”

*A resident from somewhere else in Kent*

Further to the initial data analysis of views on the proposed facilities, the evaluation of responses also included a cross-tabulation of ‘Would you use the proposed station?’ with ‘To what extent do you agree or disagree with the proposed station facilities?’ This exercise showed that a majority of those who answered that they would use the proposed station were more likely to agree with the proposed station facilities - 73% of those who would use the station agreed with the proposed station facilities.

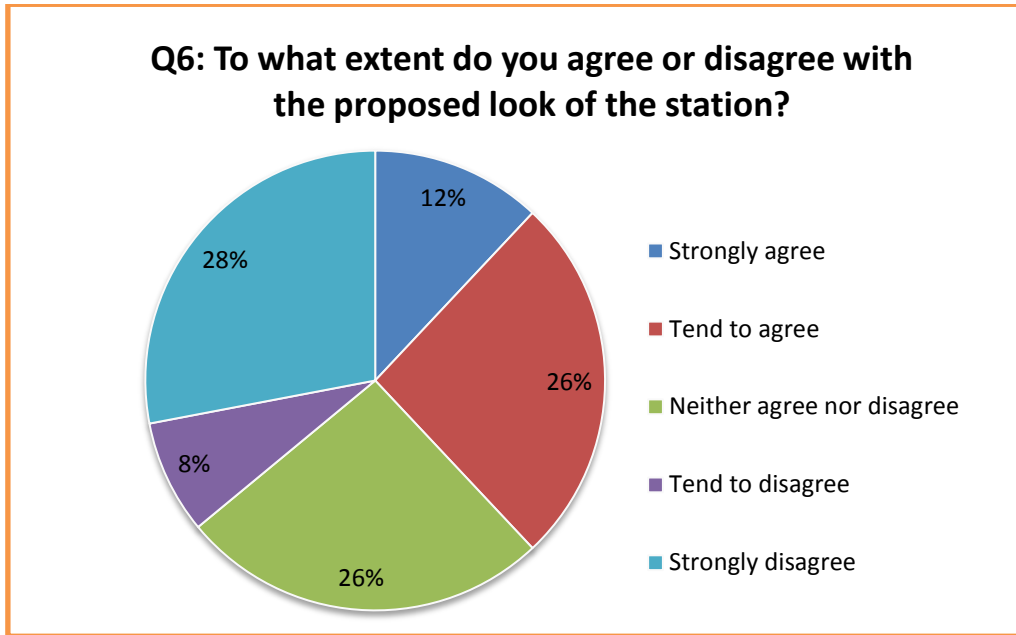
		Would you use the proposed Thanet Parkway station?			Total
		Yes	No	Don't know	
To what extent do you agree or disagree with the proposed station facilities?	Strongly agree	37 (35.2%)	12 (9.8%)	9 (11.4%)	<b>58</b>
	Tend to agree	40 (38.1%)	13 (10.7%)	30 (38%)	<b>83</b>
	Neither agree nor disagree	13 (12.4%)	23 (18.8%)	19 (24.1%)	<b>55</b>
	Tend to disagree	7 (6.7%)	15 (12.3%)	8 (10.1%)	<b>30</b>
	Strongly disagree	8 (7.6%)	56 (46%)	9 (11.4%)	<b>73</b>
	Don't know		2 (1.6%)	1 (1.3%)	<b>3</b>
	No answer		1 (0.8%)	3 (3.7%)	<b>4</b>
<b>Total</b>		<b>105</b>	<b>122</b>	<b>79</b>	

### YOU SAID, WE DID

Comments have been noted by the project team and reasonable improvements to the station facilities will be explored when developing the station design and will be considered in line with the project budget.

### 8.1.2. Question 6: Proposed Look of the Station

There was a varied spread of responses to this question with a total of 311 individuals/organisations providing their view on the proposed look of the station. Overall, 38% strongly agreed or tended to agree, 26% neither agreed nor disagreed and 36% tended to disagree or strongly disagreed with the proposed look of the station.



*From Q6: To what extent do you agree or disagree with the proposed look of the station and car park?*

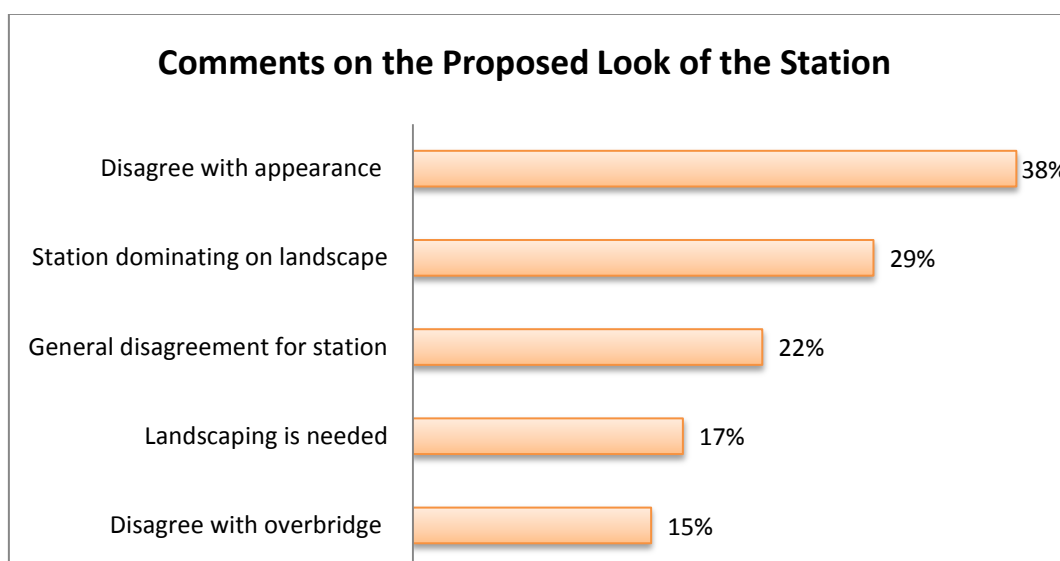
A total of 136 respondents made a comment on the proposed look of the station (44%). A number of comments were made in relation to station facilities and there were some respondents who used their answer to this question to express general disagreement for the station. However those that addressed the proposed look of the station tended to focus on the following themes: general disagreement with the stations appearance; a feeling that the station would dominate the landscape; disagreement with the inclusion of an overbridge; and requests for sufficient landscaping.

“The bridge is an eyesore that will detrimentally change the landscape of the area. Needs to blend in more with the environment!”

*A Cliffsend Resident*

“The actual look of the station is less important than its facilities, but it needs to have sufficient quality and the current design does that.”

*A resident from somewhere else in Kent*



*From Q6 coded responses to open question. Note: 5 most frequent themes displayed.*

A cross-tabulation of responses to ‘Would you use the proposed station?’ with ‘To what extent do you agree or disagree with the proposed look of the station?’ was undertaken, the results of which demonstrate that generally those who would use the station agreed with the proposed look.

		Would you use the proposed Thanet Parkway station?			Total
		Yes	No	Don't know	
To what extent do you agree or disagree with the proposed look of the station?	Strongly agree	27 (25.7%)	3 (2.5%)	5 (6.3%)	<b>35</b>
	Tend to agree	41 (39.1%)	12 (9.8%)	27 (34.2%)	<b>80</b>
	Neither agree nor disagree	15 (14.3%)	34 (27.9%)	29 (36.7%)	<b>78</b>
	Tend to disagree	6 (5.7%)	12 (9.8%)	5 (6.3%)	<b>23</b>
	Strongly disagree	14 (13.3%)	60 (49.2%)	9 (11.4%)	<b>83</b>
	Don't know	2 (1.9%)	1 (0.8%)	2 (2.5%)	<b>5</b>
	No answer			2 (2.5%)	<b>2</b>
<b>Total</b>		<b>105</b>	<b>122</b>	<b>79</b>	

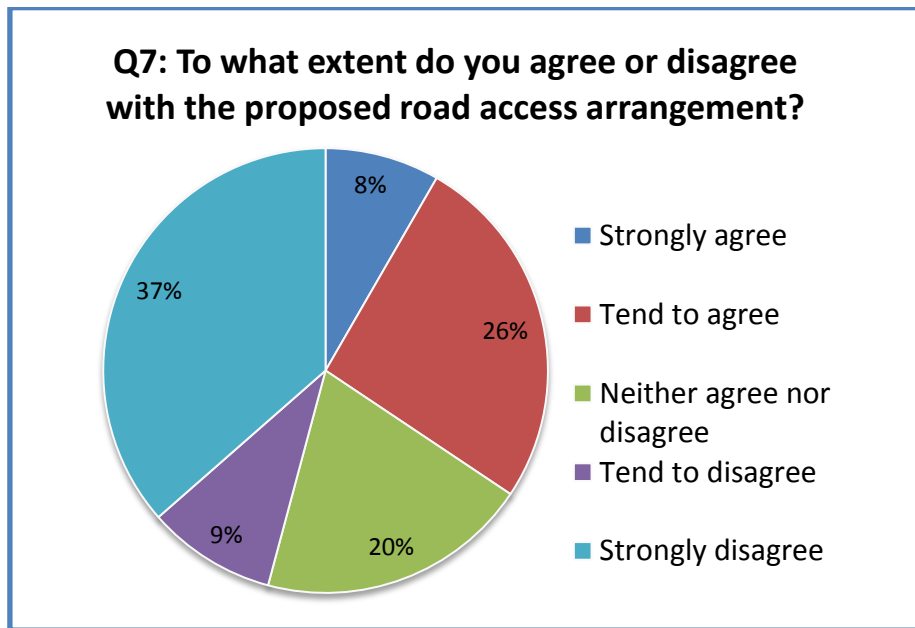
#### **YOU SAID, WE DID**

The look of the station is being revisited by the project team and design consultants, and alterations will be made where possible to reduce the impact of the station building on the landscape.

### 8.1.3. Question 7: Proposed Road Access

Q7: *To what extent do you agree or disagree with the proposed road access arrangement (two-way single access road with a signalised T-junction from Hengist Way A229)?*

The analysis of responses concluded that the majority disagreed with the proposed road access arrangement. Out of a total of 310 respondents to this question, 46% either tended to disagree or strongly disagree, 34% either tended to agree or strongly agree and 20% neither agree nor disagree.



A total of 165 comments were left in response to the proposed road access (53% of respondents to this question). Many of the comments for this question expressed specific concerns for the proposed road access arrangement. The top 5 most frequent themes were in relation to congestion (30%), safety concerns (29%), concerns regarding the signalised junction (27%), general disagreement with the proposed station (20%), and concerns of the impact on the existing road (15%).

“Signalisation will impede other traffic. Access via a slip road from the nearest roundabout would be less invasive.”

*A Parish / District or County Councillor*

“The A299 is a very busy road especially during rush hour times. The proposed junction will cause considerable congestion.”

*A resident from somewhere else in Kent*

Furthermore, 23 comments suggested alternative road access arrangements, including the following suggestions:

- “The entrance ought to be a roundabout and not a T-junction onto a dual carriageway”
- “A much better & safer solution would be to use slip roads in & out of the station running west, parallel to Hengist Way, to join onto the Sevenscore roundabout.”
- “I would recommend that traffic coming from the west does not cross Hengist Way but continues up to the Lord of the Manor before returning on the westbound side of Hengist Way.”
- “Access road from A299 should be for traffic from Ramsgate direction only and access to A299 should be exit only. Needs another entrance from Cottington Road along existing track that runs along railway line for traffic coming from Canterbury/Margate/Minster directions.”

The responses received to question 7 (“To what extent do you agree or disagree with the proposed road access?”) were cross-tabulated with those for question 4 (“Would you use the proposed Thanet Parkway station?”). The results can be seen in the table below, which shows clearly the majority of those who would use the station tended to agree or strongly agree with the proposed road access. Those respondents who disagreed with the proposed arrangement tended to signify that they would not use the station.

		Would you use the proposed Thanet Parkway station?			Total
		Yes	No	Don't know	
To what extent do you agree or disagree with the proposed road access?	Strongly agree	15 (14.3%)	6 (4.9%)	5 (6.3%)	<b>26</b>
	Tend to agree	41 (39%)	15 (12.3%)	20 (25.3%)	<b>76</b>
	Neither agree nor disagree	18 (17.1%)	24 (19.7%)	16 (20.3%)	<b>58</b>
	Tend to disagree	9 (8.6%)	7 (5.7%)	12 (15.2%)	<b>28</b>
	Strongly disagree	16 (15.2%)	69 (56.6%)	21 (26.6%)	<b>106</b>
	Don't know	5 (4.8%)	1 (0.8%)	3 (3.8%)	<b>9</b>
	No answer	1 (1%)		2 (2.5%)	<b>3</b>
<b>Total</b>		<b>105</b>	<b>122</b>	<b>79</b>	

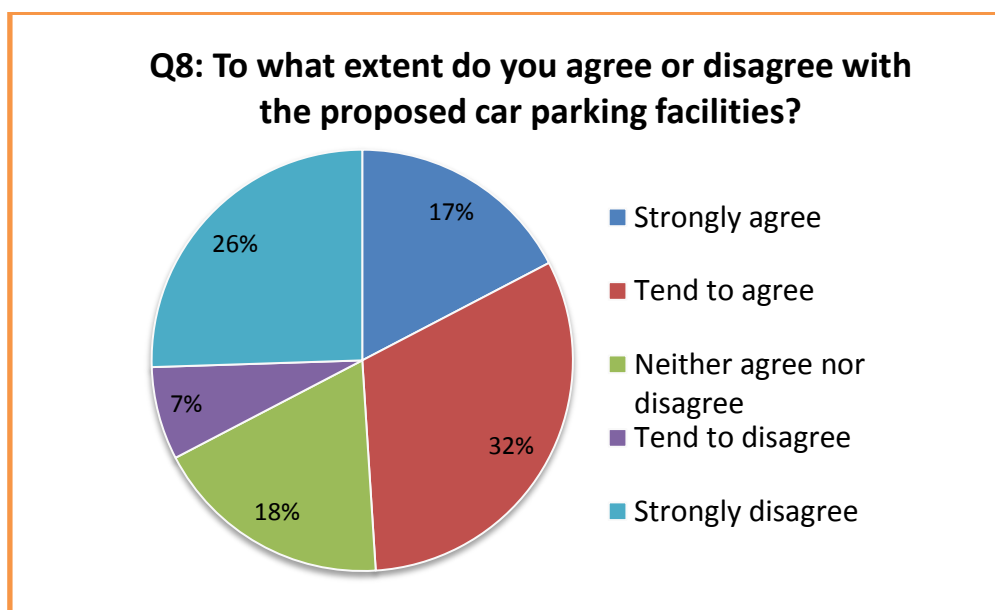
**YOU SAID, WE DID**

The Thanet Parkway project team have taken the above comments into consideration and are currently working with our design consultants to consider how we can improve the existing road design according to the concerns raised and investigate the alternative options proposed.

#### 8.1.4. Question 8: Proposed Car Parking Facilities

Q8: To what extent do you agree or disagree with the proposed car parking facilities (300 long stay parking spaces, dedicated short stay pickup/drop off zone, disabled bays, electric car charging points, parking for motorcycles, taxi rank and cycle storage)?

A total of 309 respondents provided their view on the proposed car parking facilities. Overall, the majority tended to agree or strongly agree with the proposals (49%). 26% of respondents strongly disagreed; however these tended to be Cliffsend residents who had concerns in regards to a potential risk of commuters parking in residential areas should such commuters try to avoid parking charges (62%).



Of those responding to this question, 166 comments were left in response to this question. Comments made by those disagreeing generally expressed a number of common themes: the suggestion that parking charges should either be free or minimal (30%); concerns regarding impact on residential parking (26%), and general disagreement for the proposed station (19%). However, 11% of comments were in relation to the number of planned spaces not being enough to cope with anticipated demand and future development.

“I think 300 long stay spaces is underestimating the demand there may be.”

*A resident from somewhere else in Kent*

“Car parking costs need to be kept to a minimum to encourage people not to park in Cliffsend.”

*A Cliffsend Resident*

A cross-tabulation exercise of “Would you use the proposed Thanet Parkway station” with “To what extent do you agree or disagree with the proposed car parking facilities?” can be seen in the table below. The results demonstrate that the majority of those who either would use or don’t know if they will use the proposed station agreed with the proposed parking facilities.

		Would you use the proposed Thanet Parkway station?			Total
		Yes	No	Don't know	
To what extent do you agree or disagree with the proposed car parking facilities?	Strongly agree	30 (28.6%)	11 (9%)	10 (12.7%)	<b>51</b>
	Tend to agree	49 (46.7%)	19 (15.6%)	27 (34.2%)	<b>95</b>
	Neither agree nor disagree	14 (13.3%)	20 (16.4%)	20 (25.3%)	<b>54</b>
	Tend to disagree	5 (4.8%)	11 (9%)	5 (6.3%)	<b>21</b>
	Strongly disagree	7 (6.7%)	56 (45.9%)	13 (16.5%)	<b>76</b>
	Don't know		4 (3.3%)	1 (1.3%)	<b>5</b>
	No answer		1 (0.8%)	3 (3.8%)	<b>4</b>
<b>Total</b>		<b>105</b>	<b>122</b>	<b>79</b>	

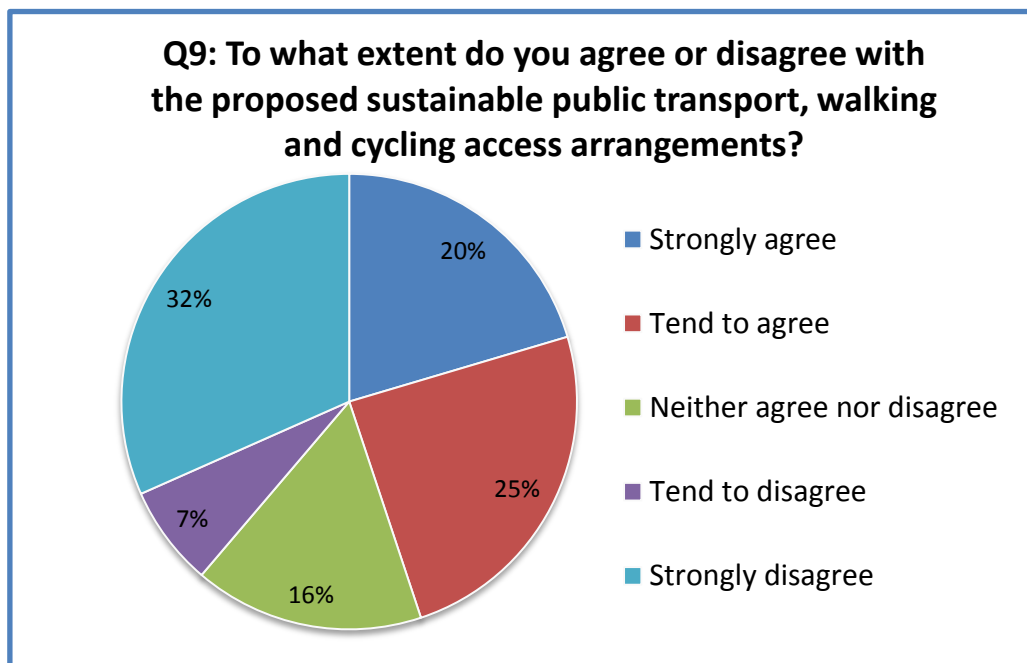
**YOU SAID, WE DID**

Pricing of car parking at the station is still to be decided. Different scenarios are being explored by the project team and will be presented to the Cabinet Member for a final decision. Should it be decided that parking will be charged, KCC will work with Thanet District Council to explore measures to prevent commuter parking in residential areas.

### 8.1.5. Question 9: Proposed Public Transport, Walking and Cycling Access

*Q9: To what extent do you agree or disagree with the proposed public transport, walking and cycling access arrangements (park & ride, cycle, pick up/drop off zone, walking and bus)?*

There was a varied spread of responses to this question with a total of 306 individuals/organisations providing their view on the proposed public transport, walking and cycling access to the station. A total of 45% of respondents either strongly agreed or tended to agree with the proposed park & ride, cycle, walking and bus facilities outlined on page 11 of the consultation booklet. In comparison, 32% strongly disagreed with the proposals; these tended to be those who were opposed to the project as a whole or residents of Cliffsend who had concerns regarding the proposed pedestrian access to Earlsmead Crescent.



A total of 169 comments were made in response to question 9, covering a range of topics. 15% of these comments were in general disagreement to the proposed station, whereas the remainder covered a number of common themes including: concerns with the proposed pedestrian link (21%) and the potential for this to encourage parking in residential areas (17%). Further comments were made in relation to the need for regular bus services and good links with existing public transport services throughout Thanet (12%). Others felt the station location was too remote to access via walking or cycling apart from those who live locally in Cliffsend (10%).



“I am very strongly opposed to the provision of cycle path/footpath access from Earlsmead Crescent, as this has the potential to turn the Old Hall Estate into a free car park for the station.”

*A Cliffsend Resident*

“The cycle and pedestrian access to Cliffsend is now considerably better than the initial design.”

*A resident from somewhere else in Kent*

Further to the initial data analysis of views on the proposed public transport, walking and cycling access, the evaluation of responses also included a cross-tabulation of ‘Please tell us how you normally get to your current train station’ with ‘To what extent do you agree or disagree with the proposed public transport, walking and cycling access arrangements?’ The results displayed in the table below show the overall majority of respondents who use any mode to travel to a railway station tended to agree or strongly agree with the proposals.

		Please tell us how you normally get to your current train station?						Total
		Bus	Passenger in a car	Car	Walk	Cycle	Taxi	
To what extent do you agree or disagree with the proposed public transport, walking and cycling access?	Strongly agree	8 (26.7%)	5 (12.2%)	27 (23.7%)	28 (24.1%)	5 (25%)	3 (9.1%)	76
	Tend to agree	4 (13.3%)	10 (24.4%)	35 (41%)	35 (30.2%)	7 (35%)	10 (30.3%)	101
	Neither agree nor disagree	10 (33.3%)	7 (17.1%)	19 (30.7%)	18 (15.5%)	1 (5%)	7 (21.2%)	62
	Tend to disagree	1 (3.3%)	2 (4.9%)	7 (6.1%)	7 (6%)	1 (5%)	2 (6.1%)	20
	Strongly disagree	7 (23.3%)	17 (41.5%)	26 (22.8%)	28 (24.1%)	6 (30%)	11 (33.3%)	95
<b>Total</b>		<b>30</b>	<b>41</b>	<b>114</b>	<b>116</b>	<b>20</b>	<b>33</b>	

### YOU SAID, WE DID

Comments in regards to the pedestrian/cycle access have been noted by the project team and are currently being reviewed as part of the design development prior to submission of a planning application.

### 8.1.6. Question 10: Equality and Diversity Impact Assessment

Respondents were given the opportunity to comment on the initial Equality Impact Assessment, which was a separate document available on the Thanet Parkway website and also available upon request.

Question 10 of the consultation questionnaire asked:

*We have completed an initial Equality Impact Assessment (EqIA) for the proposals put forward in this consultation. We welcome your views on our equality analysis and if you think there is anything we should consider relating to equality and diversity. Please add any comments.*

A total of 72 respondents provided a view on the EqIA (23%). Comments touched on a number of different topics, but the majority were in relation to the proposed station facilities and how these could impact on protected characteristic groups. For example, 12 respondents (16.7%) had concerns regarding a lack of assistance for disabled users if the station was unstaffed. A number of other comments also focused on the impact on disabled individuals.

“Good access for people with disabilities is essential. If the car park has charges imposed I would strongly suggest it is free for disabled users. The Ramsgate train station is not disabled friendly so this one will need to be.”

*A Cliffsend Resident*

“Greater thought needs to be given to equality of access by disabled people, whose needs can often be met much more effectively at fully staffed stations such as those in the main Thanet towns.”

*Thanet Green Party*

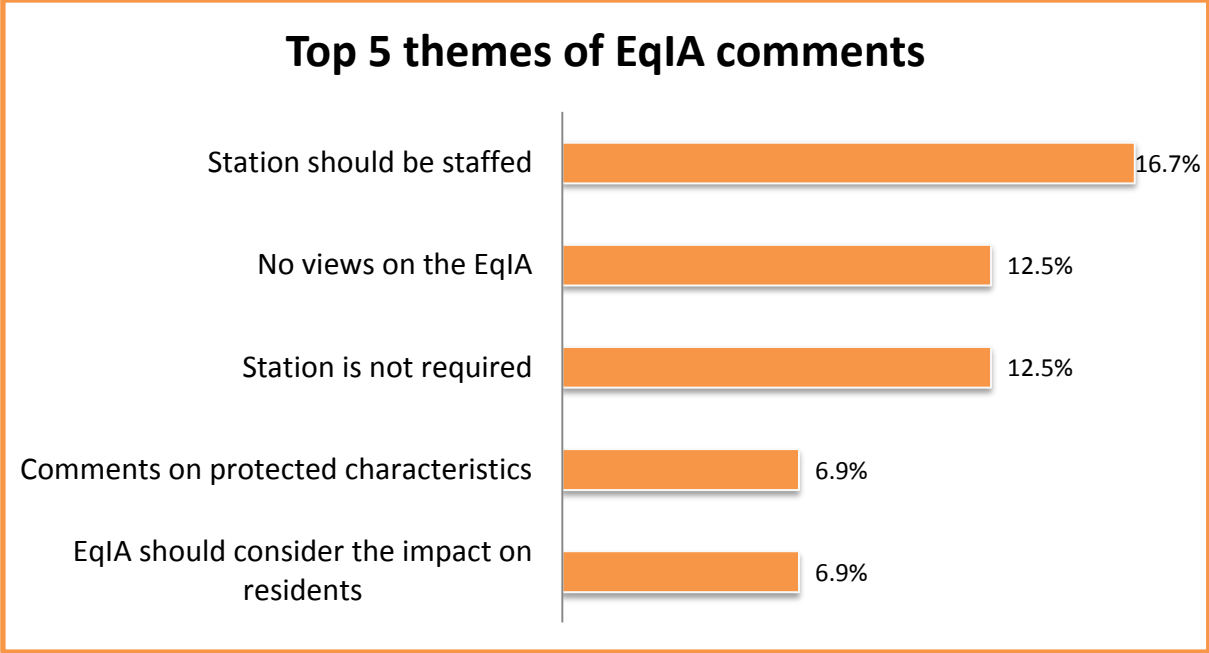
In addition, a large number of comments echoed the potential impacts outlined in the EqIA in regard to individuals feeling unsafe, and a number of respondents felt CCTV was not an adequate solution to the potential risk and some recommended that the station should be staffed.

“On an equality and diversity basis, we feel that the unmanned aspect of this station would very possibly make it unsafe for lone or vulnerable people to use the station particularly if collecting cars at night, or waiting for public transport if it is available, particularly as it is in such as currently undeveloped and out of the way place.”

*A representative of a local community group of residents association*

A number of comments were also made in regards to the EqlA process, in particular the protected characteristic groups assessed (6.9%). Furthermore, 9 respondents (12.5%) used this question to express their objections for the proposed station.

The five most common themes are listed below, with the remainder of comments being in relation to more specific topics.



The purpose of an EqlA is to understand how the proposed Thanet Parkway station could affect Kent residents from all communities and to avoid unintended discrimination. The Equality Act 2010 outlines the following protected characteristics; age, disability, gender reassignment, marriage and civil partnership, pregnancy and maternity, race, religion or belief, sex and sexual orientation should all be considered when undertaking an equality analysis. An important part of the EqlA process is to gather views of those affected through the consultation. The EqlA will be revised taking into account the comments received from the consultation.

**YOU SAID, WE DID**  
The feedback received in response to the EqlA will be considered by the project team and reasonable amendments to the proposal in relation to safety concerns will be made when developing the detailed design.

8.1.7. Question 11: Other comments

Respondents were given the opportunity to provide any other comments on the proposed Thanet Parkway station.

Question 11 of the consultation questionnaire asked:

*If you have any other comments on our proposals described in the consultation booklet, please provide them.*

139 comments were left in response to this question (44%). Some respondents used this question to express their objection for the proposed station (28.1%). However, there were also some comments which expressed support for the station. These conflicting views can be seen in the quotes below.

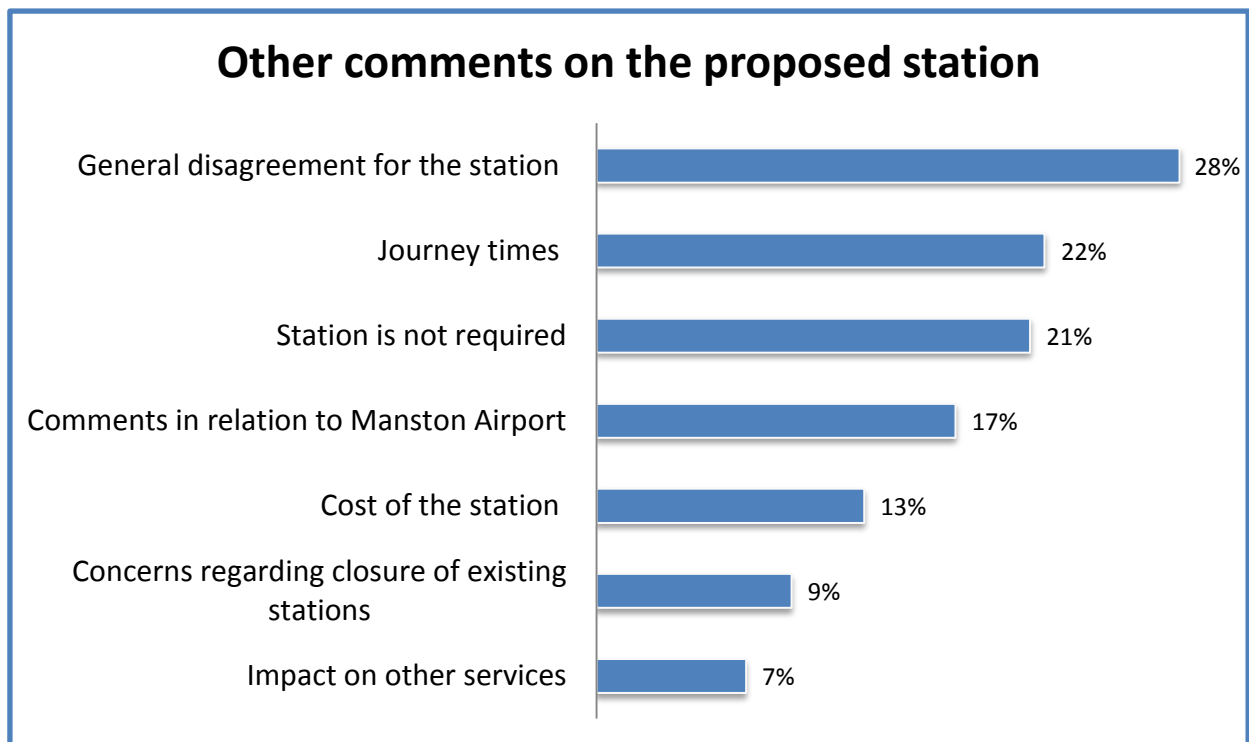
“The plan is a complete waste of money. We already have good rail access in Thanet and the future viability of these stations could be compromised. The additional time for trains to stop will detract from planned running time improvements. The money would be better spent on improving the line between Ramsgate, Canterbury and Ashford”

*A resident from somewhere else in Kent*

“I really welcome the building of this new station. I used to commute to London and this completed the high speed investment opening up new job opportunities to the people of Thanet and also for leisure. I will certainly be using it.”

*A resident from somewhere else in Kent*

The most common comment themes are listed below, with the remainder of comments being in relation to more specific topics. Some examples of these other topics were in relation to the station location, potential pollution impact, purpose of the station, concerns regarding increase in traffic, impact on local residents, and the need to plan for future development.



This section of the questionnaire was also used for comments on the consultation itself, with 6 received in total. There were opposing views, as illustrated by the quotes below.

“I feel that the consultation itself is a model of good consultation, as the layout is excellent, and the public are presented with a list of all the key documents, and drawings/visual montages of the proposed views. It is therefore clear and open, which is excellent. The back history of the previous stage consultation is given via links, likewise, really helpful.”

*Anonymous individual*

“Regrettably, although I support public consultation in broad terms, this particular consultation seems entirely premature and potentially a waste of money.”

*A resident from somewhere else in Kent*

## **9. Letters/emails received**

Some respondents chose not to use the questionnaire form to respond to the consultation and instead provided their views in the form of a letter or email. Overall, 9 letters and 27 emails were received.

### **9.1. Letters received**

Of the letters received, there included an equal mix of responses from both organisations and members of the public. Letters were received from the following: Dover District Council, Historic England, Manston Parish Council, Acol Parish Council and RPS on behalf of RiverOak Strategic Partners Limited. Four letters were also received from members of the public; two were residents of Cliffsend and two from elsewhere in Kent. In addition, a letter was also received from Sir Roger Gale M.P for North Thanet.

Themes from the responses by letter received from members of the public tended to raise similar concerns to those raised in response to the consultation questionnaire. Therefore, these letters were analysed in the same way as the open questions within the questionnaire and incorporated within the results in section 8.2. *Questionnaire Analysis*.

Letters received from organisations demonstrated general support (60%) or objection (40%) to the proposals. Manston Parish Council wrote in objection to the proposed station until further clarification on the future of Manston Airport. Acol Parish Council also wrote in objection to the new station and raised concerns in relation to the impact on local roads. The letter from RPS on behalf of RiverOak demonstrated

general support for the station, especially if the airport was to reopen. Further information in regards to the letters received from Historic England and Dover District Council can be found in section *10. Stakeholder Responses*

In his letter, Sir Roger Gale M.P wrote in relation to the future of Manston Airport and how the consultation fails to make reference to the airport. He also provided comments on the road access arrangements and expressed preference for direct access from the existing roundabout, whilst also requesting the car park be enlarged. Furthermore, the MP requested that the overbridge be replaced with a well-lit and CCTV monitored underpass in order for the station to be less dominating on the landscape, which he mentions is also a concern of a number of his constituents.

### 9.2. Emails received

The vast majority of email responses received were from members of the public apart from one which was from Sandwich Town Council.

Themes from the email responses aligned to the questionnaire responses and included comments in relation to the rationale for delivering the station, concerns regarding the closure of existing stations, the future of Manston Airport, impact on journey times, and general support or objection for the proposal.

There were also a number of emails received which made comment on Thanet District Council's draft local plan, which whilst being consulted on at the same time, was entirely separate to the Thanet Parkway consultation. However, any comments made in relation to the proposed Thanet Parkway station were noted and analysed using the same methodology as the questionnaire responses.

## **10. Organisation responses**

Consultation responses were received from a range of stakeholders, including Dover District Council, Historic England, CPRE Kent and Kent Association for the Blind. A summary of their responses is set out below.

### Dover District Council

Dover District Council (DDC) responded to the consultation in the form of a letter. In their response, DDC expressed support for the project and that it views the provision of a new Parkway Station as supporting ongoing development at Discovery Park Enterprise Zone and the ongoing expansion and accessibility of the Dover area.

DDC also outlined a number of rail matters on which they wish to press Network Rail and the Train Operating Company. These included making the case for all services to stop at Thanet Parkway and ensuring that Thanet Parkway can fully accommodate 12 car trains.

Furthermore, DDC confirmed their support for working with KCC to deliver the Parkway station.

### Thanet District Council

No formal response was received from Thanet District Council.

### Historic England

A letter was received from Historic England in response to this consultation which provided pre-application advice on the impacts of the proposal on heritage assets within the immediate and surrounding area. Historic England confirmed that there are no designated heritage assets within the proposed location for the station. However, it requested that the effect on undesignated heritage assets of an archaeological nature and the significance of nearby designated heritage assets to be considered when developing a detailed design and planning application for the proposed station.

In addition, Historic England also made reference to St Augustine's Cross and following consultation with Historic England concluded the proposed station would only have a minor negative effect, with remaining fields providing a rural buffer between the cross and the station.

### Kent Branch of Campaign to Protect Rural England (CPRE Kent)

Campaign to Protect Rural England (CPRE Kent) responded to the consultation by means of the online questionnaire.

In their response, CPRE Kent raised concerns with the proposed look of the station as they felt it would have a negative impact on the largely rural landscape and significantly erode the tranquility of St Augustine's Cross. Furthermore, they felt that the unstaffed nature of the station would raise safety and security risks for passengers, especially those with disabilities but felt that all necessary facilities had been included within the design.

CPRE Kent also raised concerns in regard to the potential for the station to generate additional car journeys and welcomed all measures to reduce the number of trips by private car, such as the inclusion of cycle storage and electric charging points. In addition, concerns were raised in regard to the lack of safe pedestrian access to the station from the main entrance road, which is currently situated off the dual carriageways.

### Kent Association for the Blind

An online questionnaire response was received from Kent Association for the Blind.

Kent Association for the Blind felt the general layout of the station looked logical for pedestrians; however, the organisation mentioned that at this stage of the project it is difficult to comment on the specifics of disabled access for people with sight loss. Nevertheless, it provided advice on elements to consider when finalising the detailed design.

## 11. Conclusion

The consultation asked for views on the proposed station facilities, the look of the station, the road access arrangements, parking facilities and public transport, cycling and walking facilities. Overall, the latest proposal for Thanet Parkway railway station was relatively well received. However, there were a number of concerns and objections raised by local residents, mainly due to the proximity of the proposed station to and potential impact on Cliffsend village.

The majority of respondents agreed with the proposed facilities, but felt the station should be staffed in order to eliminate concerns regarding safety and security. A number of respondents also felt facilities such as heated waiting areas, toilets and retail facilities should be included within the design to encourage use of the station.

The proposed look of the station received a mix of views. Many felt the building would dominate the landscape and was architecturally unattractive. Nevertheless, more people agreed than outright disagreed with the proposed look.

A number of concerns were raised in relation to the proposed road access arrangements, where the majority of respondents disagreed. Safety, congestion and the impact of a signalised junction on the existing dual carriageway were a few of the reasons as to why people tended to disagree with the proposed access arrangements.

Those who responded to the consultation tended to be in agreement with the plans for parking facilities. However, people felt the charge should be reasonable so as to not discourage rail users from using the official car parking which could lead to station users parking in residential areas. To this end, local residents had particular concerns in relation to parking in Cliffsend village.

The proposed public transport, cycling and walking access was generally well received; however, the pedestrian access route faced objection by Cliffsend residents who had concerns that this walkway would encourage commuters to park in residential areas for free and walk to the station from the village.

There were also many more generalised concerns in relation to development in Thanet, congestion and the future of the Manston Airport site but these were outside the scope of this consultation.

Key stakeholders were broadly supportive; however, the Kent Branch of Campaign to Protect Rural England raised concerns regarding the environmental impact of the station.

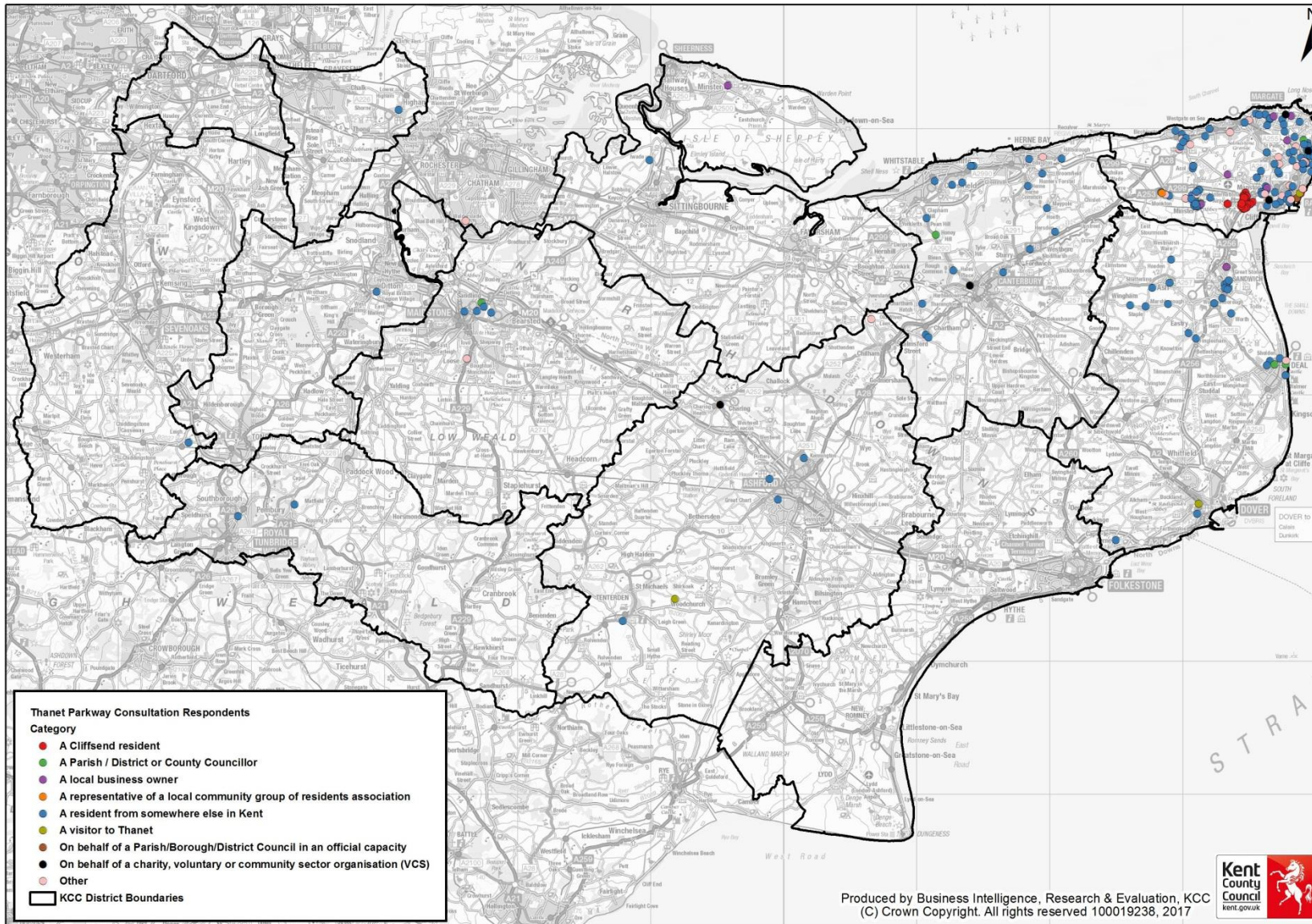
All of the key findings of this consultation will be considered in the revision of the station design prior to submission of a planning application.



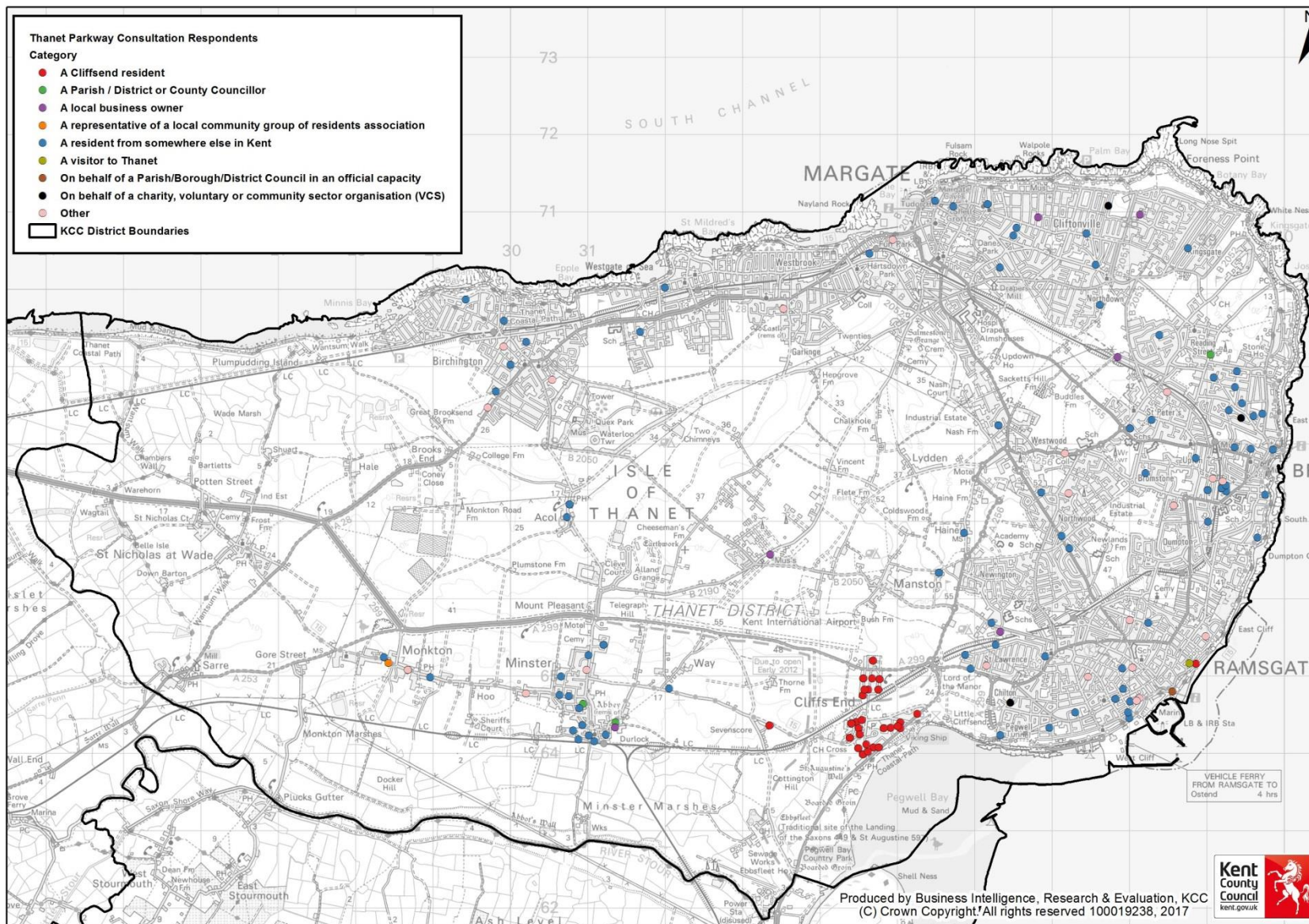
## APPENDIX A – Social Media Timetable (Twitter)

Date:	Time:	Theme/topic	Content:	Character count	Image/video. Y/N? (inc file name)
26th Jan	7.48am	Consultation Launch	KCC is launching a second public consultation for Thanet Parkway Railway Station. Give us your views <a href="http://bit.ly/2kdYg5I">http://bit.ly/2kdYg5I</a>	124	Car Park 05
27th Jan	2.52pm				
4th Feb	2.23pm	Consultation Launch	Find out more and tell us your views about the next stage of our plans for Thanet Parkway Railway Station - click here <a href="http://bit.ly/2kdYg5I">http://bit.ly/2kdYg5I</a>	140	Car Park 02
7th Feb	8.22am	Public Event	Come and visit us today. Ask questions and tell us your views on Thanet Parkway Railway Station. Cliffsend Village Hall 3pm to 8pm	132	
7th Feb	6.34pm	Public Event	Find out more about Thanet Parkway Station at Discovery Park Enterprise Zone tomorrow from 10am to 5pm <a href="http://bit.ly/2kdYg5I">http://bit.ly/2kdYg5I</a>	124	
12th Feb	6.40pm	Consultation Mid way point	Get an update on Thanet Parkway Railway Station and give us your views on the next stage of consultation. <a href="http://bit.ly/2kdYg5I">http://bit.ly/2kdYg5I</a>	128	Car Park 05
19th Feb	8.10pm	Public Event	Visit us tomorrow. Find out more about Thanet Parkway Railway Station. We're at Acol Village Hall from 3pm to 8pm <a href="http://bit.ly/2kdYg5I">http://bit.ly/2kdYg5I</a>	137	
22nd Feb	5.44pm	Public Event	Come and visit us tomorrow. Find out more about Thanet Parkway Railway Station. We're at Minster-in-Thanet Library from 2pm to 5.30pm	135	
27th Feb	4.50pm	Public Event	Visit us tomorrow & find out more about Thanet Parkway Station. We're in the Ticket Hall at Ramsgate Railway Station from 3pm to 7.30pm	136	
2nd March	8.15am	Public Event	Come and visit us today. Ask questions and tell us your views on Thanet Parkway Railway Station. Cliffsend Village Hall 3pm to 8pm	132	
12th March	7.40pm	Consultation Last Week	KCC are consulting on the outline design of the new Thanet Parkway Railway Station. Have your say here. <a href="http://bit.ly/2kdYg5I">http://bit.ly/2kdYg5I</a>	127	Platform View
19th March	9.10am	Consultation Close	Last chance to tell us your views on Thanet Parkway Railway Station. Find out more and complete our survey here <a href="http://bit.ly/2kdYg5I">http://bit.ly/2kdYg5I</a>	135	Car Park 02

# APPENDIX B – Geographical spread of questionnaire respondents in Kent



# Geographical spread of questionnaire respondents in Thanet



## APPENDIX C – Consultation Questionnaire

### Thanet Parkway Railway Station Consultation Questionnaire

Kent County Council (KCC) is working to improve rail capacity within Thanet by proposing the development of a new Parkway railway station. In 2015, we consulted on the initial high level design, impacts and benefits of Thanet Parkway. The feedback received from the first consultation helped to shape the outline design, on which we would now like to hear your views.

All consultation material can be found at [kent.gov.uk/thanetparkway](http://kent.gov.uk/thanetparkway). Hard copies are available via the Alternative Format contact details below or at one of our six consultation events:

Venue	Date	Time
Cliffsend Village Hall	7 <sup>th</sup> February	15:00 – 20:00
	2 <sup>nd</sup> March	15:00 – 20:00
Discovery Park Enterprise Zone	8 <sup>th</sup> February	10:00 – 17:00
Acol Village Hall	20 <sup>th</sup> February	15:00 – 20:00
Minster-in-Thanet Library	23 <sup>rd</sup> February	14:00 – 17:30
Ramsgate Railway Station	28 <sup>th</sup> February	15:00 – 19:30

We will be consulting on the outline design of Thanet Parkway from 25<sup>th</sup> January to 19<sup>th</sup> March. Your responses will help us to prepare a planning application for the proposed station which we are planning to submit in summer 2017.

This questionnaire can be completed online at [kent.gov.uk/thanetparkway](http://kent.gov.uk/thanetparkway).

Alternatively, you can fill in this paper form and return it to the following address:

FREEPOST, Thanet Parkway Public Consultation, Kent County Council

**Please ensure your response reaches us by Sunday 19<sup>th</sup> March 2017**

**Privacy:** Kent County Council collects and processes personal information in order to provide a range of public services. Kent County Council respects the privacy of individuals and endeavours to ensure personal information is collected fairly, lawfully, and in compliance with the Data Protection Act 1998.

#### Alternative Formats and Hard Copies

To request hard copies of any of the consultation documents, including the consultation booklet, or for any other formats, please email: [alternativeformats@kent.gov.uk](mailto:alternativeformats@kent.gov.uk) or call: 03000 421553 (text relay service number: 18001 03000 421553). This number goes to an answering machine, which is monitored during office hours.

# APPENDIX C – Consultation Questionnaire

## Questionnaire

**Q1. Please tell us in what capacity you are completing this questionnaire:**

*Please select the option that most closely represents how you will be responding to this consultation. Please select **one** box.*

- A Cliffsend resident
- A resident from somewhere else in Kent
- A representative of a local community group or residents association
- On behalf of a Parish / District Council in an official capacity
- A Parish / District or County Councillor
- A local business owner
- On behalf of a charity, voluntary or community sector organisation (VCS)
- A visitor to Thanet
- Other, please specify:

**Q1a. If you are responding on behalf of an organisation (business, community group, resident association, council or any other organisation), please tell us the name of your organisation here:**

**Q2. Please tell us your postcode:** \_\_\_\_\_

*We use this to help us to analyse our data. It will not be used to identify who you are.*

***If you are responding as an individual, please go to the next question. If you are responding on behalf of an organisation, please go to Q5.***

**Q3. Do you currently travel by train?**

*Please select **all** that apply.*

- Yes – for commuting to work
- Yes – for work (other than commuting)
- Yes – for leisure travel
- Yes – for education and training
- No – I do not travel by train

# APPENDIX C – Consultation Questionnaire

**Q3a. If you have answered ‘Yes’ to Q3, please tell us how you normally get to your current train station?**

*Please select **all** that apply.*

<input type="checkbox"/>	Bus
<input type="checkbox"/>	Passenger in a car
<input type="checkbox"/>	Car
<input type="checkbox"/>	Walk
<input type="checkbox"/>	Cycle
<input type="checkbox"/>	Taxi
<input type="checkbox"/>	Other, please specify: <input type="text"/>

**Q4. Would you use the proposed Thanet Parkway railway station?**

*Please select **one** box.*

<input type="checkbox"/>	Yes
<input type="checkbox"/>	No
<input type="checkbox"/>	Don't know

**Q4a. If you have answered ‘Yes’ to Q4, please tell us how often you think you would use Thanet Parkway railway station?**

*Please select **one** box.*

<input type="checkbox"/>	Daily
<input type="checkbox"/>	More than once a week
<input type="checkbox"/>	Once a week
<input type="checkbox"/>	Once or twice a month
<input type="checkbox"/>	More than once a year
<input type="checkbox"/>	Once a year or less
<input type="checkbox"/>	Other, please specify: <input type="text"/>

# APPENDIX C – Consultation Questionnaire

## Proposed Station Facilities *(See page 5 of the consultation booklet)*

**Q5. To what extent do you agree or disagree with the proposed station facilities (waiting shelters, information points, ticket machines, lift and help points for remote assistance)?**

*Please select **one** box.*

Strongly agree	Tend to agree	Neither agree nor disagree	Tend to disagree	Strongly disagree	Don't know
<input type="checkbox"/>	<input type="checkbox"/>	<input type="checkbox"/>	<input type="checkbox"/>	<input type="checkbox"/>	<input type="checkbox"/>

**Please add any comments you have on the proposed station facilities below:**

# APPENDIX C – Consultation Questionnaire

## Proposed Look of the Station *(See pages 6-8 of the consultation booklet)*

**Q6. To what extent do you agree or disagree with the proposed look of the station and car park?**

*Please select **one** box.*

- |                          |                          |                               |                          |                          |                          |
|--------------------------|--------------------------|-------------------------------|--------------------------|--------------------------|--------------------------|
| Strongly agree           | Tend to agree            | Neither agree<br>nor disagree | Tend to<br>disagree      | Strongly<br>disagree     | Don't know               |
| <input type="checkbox"/> | <input type="checkbox"/> | <input type="checkbox"/>      | <input type="checkbox"/> | <input type="checkbox"/> | <input type="checkbox"/> |

**Please add any comments you have on the proposed look of the station below:**



## APPENDIX C – Consultation Questionnaire

### Proposed Road Access *(See page 9 of the consultation booklet)*

**Q7. To what extent do you agree or disagree with the proposed road access arrangement (two-way single access road with a signalised T-junction from Hengist Way A299)?**

*Please select **one** box.*

Strongly agree	Tend to agree	Neither agree nor disagree	Tend to disagree	Strongly disagree	Don't know
<input type="checkbox"/>	<input type="checkbox"/>	<input type="checkbox"/>	<input type="checkbox"/>	<input type="checkbox"/>	<input type="checkbox"/>

**Please add any comments you have on the proposed road access arrangements below:**

# APPENDIX C – Consultation Questionnaire

## Proposed Car Parking Facilities *(See page 10 of the consultation booklet)*

**Q8. To what extent do you agree or disagree with the proposed car parking facilities (300 long stay parking spaces, dedicated short stay pickup/drop off zone, disabled bays, electric car charging points, parking for motorcycles, taxi rank and cycle storage)?**

*Please select **one** box.*

- |                          |                          |                            |                          |                          |                          |
|--------------------------|--------------------------|----------------------------|--------------------------|--------------------------|--------------------------|
| Strongly agree           | Tend to agree            | Neither agree nor disagree | Tend to disagree         | Strongly disagree        | Don't know               |
| <input type="checkbox"/> | <input type="checkbox"/> | <input type="checkbox"/>   | <input type="checkbox"/> | <input type="checkbox"/> | <input type="checkbox"/> |

**Please add any comments you have on the proposed car parking facilities:**

**APPENDIX C – Consultation Questionnaire**

**Proposed Public Transport, Walking and Cycling Access** (See page 11 of the consultation booklet)

**Q9. To what extent do you agree or disagree with the proposed public transport, walking and cycling access arrangements (park & ride, cycle, pick up/drop off zone, walking and bus)?**

*Please select **one** box.*

- |                          |                          |                            |                          |                          |                          |
|--------------------------|--------------------------|----------------------------|--------------------------|--------------------------|--------------------------|
| Strongly agree           | Tend to agree            | Neither agree nor disagree | Tend to disagree         | Strongly disagree        | Don't know               |
| <input type="checkbox"/> | <input type="checkbox"/> | <input type="checkbox"/>   | <input type="checkbox"/> | <input type="checkbox"/> | <input type="checkbox"/> |

**Please add any comments you have on the proposed public transport, walking and cycling access below:**

**APPENDIX C – Consultation Questionnaire**

**Q10. We have completed an initial Equality Impact Assessment (EqIA) for the proposals put forward in this consultation.** An EqIA is a tool to assess the impact any proposals would have on the protected characteristics: age, disability, gender, gender reassignment, sexual orientation, race, religion, and carer’s responsibilities. The EqIA is available at [kent.gov.uk/thanetparkway](http://kent.gov.uk/thanetparkway) or in hard copy on request.

**We welcome your views on our equality analysis and if you think there is anything we should consider relating to equality and diversity.**

**Please add any comments below:**

**Q11. If you have any other comments on our proposals described in the consultation booklet, please provide them below:**

**It is not necessary to answer these questions if you are responding on behalf of an organisation.**

## About You

We want to make sure that everyone is treated fairly and equally, and that no one gets left out. That's why we're asking you these questions. We won't share the information you give us with anyone else. We'll use it only to help us make decisions, and improve our services. If you would rather not answer any of these questions, you don't have to.

**Q12. Are you.....?** Please select **one** box.

<input type="checkbox"/>	Male
<input type="checkbox"/>	Female
<input type="checkbox"/>	I prefer not to say

**Q13. Which of these age groups applies to you?** Please select **one** box.

<input type="checkbox"/>	0-15	<input type="checkbox"/>	25-34	<input type="checkbox"/>	50-59	<input type="checkbox"/>	65-74	<input type="checkbox"/>	85 + over
<input type="checkbox"/>	16-24	<input type="checkbox"/>	35-49	<input type="checkbox"/>	60-64	<input type="checkbox"/>	75-84	<input type="checkbox"/>	I prefer not to say

**Q14. Do you regard yourself as belonging to a particular religion or belief?**  
Please select **one** box.

<input type="checkbox"/>	Yes	<input type="checkbox"/>	No	<input type="checkbox"/>	I prefer not to say
--------------------------	-----	--------------------------	----	--------------------------	---------------------

**Q14a. If you answered 'Yes' to Q14, which of the following applies to you?**  
Please select **one** box.

<input type="checkbox"/>	Christian	<input type="checkbox"/>	Hindu	<input type="checkbox"/>	Muslim	<input type="checkbox"/>	I prefer not to say
<input type="checkbox"/>	Buddhist	<input type="checkbox"/>	Jewish	<input type="checkbox"/>	Sikh	<input type="checkbox"/>	Other Please write in below

# APPENDIX C – Consultation Questionnaire

The Equality Act 2010 describes a person as disabled if they have a longstanding physical or mental condition that has lasted, or is likely to last, at least 12 months; and this condition has a substantial adverse effect on their ability to carry out normal day-to-day activities. People with some conditions (cancer, multiple sclerosis and HIV/AIDS, for example) are considered to be disabled from the point that they are diagnosed.

## Q15. Do you consider yourself to be disabled as set out in the Equality Act 2010?

Please select **one** box.

Yes

No

I prefer not to say

**Q15a. If you answered ‘Yes’ to Q15, please tell us the type of impairment that applies to you.** You may have more than one type of impairment, so please select **all** that apply. If none of these applies to you, please select ‘Other’, and give brief details of the impairment you have.

<input type="checkbox"/>
<input type="checkbox"/>
<input type="checkbox"/>
<input type="checkbox"/>
<input type="checkbox"/>
<input type="checkbox"/>
<input type="checkbox"/>
<input type="checkbox"/>

Physical impairment

Sensory impairment (hearing, sight or both)

Longstanding illness or health condition, or epilepsy

Mental health condition

Learning disability

I prefer not to say

Other (please specify)

## APPENDIX C – Consultation Questionnaire

### Q16. To which of these ethnic groups do you feel you belong?

Please select **one** box. (Source: 2011 Census)

White English	<input type="checkbox"/>	Mixed White & Black Caribbean	<input type="checkbox"/>
White Scottish	<input type="checkbox"/>	Mixed White & Black African	<input type="checkbox"/>
White Welsh	<input type="checkbox"/>	Mixed White & Asian	<input type="checkbox"/>
White Northern Irish	<input type="checkbox"/>	Mixed Other*	<input type="checkbox"/>
White Irish	<input type="checkbox"/>	Black or Black British Caribbean	<input type="checkbox"/>
White Gypsy/Roma	<input type="checkbox"/>	Black or Black British African	<input type="checkbox"/>
White Irish Traveller	<input type="checkbox"/>	Black or Black British Other*	<input type="checkbox"/>
White Other*	<input type="checkbox"/>	Arab	<input type="checkbox"/>
Asian or Asian British Indian	<input type="checkbox"/>	Chinese	<input type="checkbox"/>
Asian or Asian British Pakistani	<input type="checkbox"/>	I prefer not to say	<input type="checkbox"/>
Asian or Asian British Bangladeshi	<input type="checkbox"/>		
Asian or Asian British Other*	<input type="checkbox"/>		

**\*Other Ethnic Group - If your ethnic group is not specified on the list, please describe it here**

### Q17. Are you...?

Please select **one** box.

Heterosexual/Straight	<input type="checkbox"/>	Gay man	<input type="checkbox"/>
Bi/Bisexual	<input type="checkbox"/>	I prefer not to say	<input type="checkbox"/>
Gay woman/Lesbian	<input type="checkbox"/>	Other (please write in below)	<input type="checkbox"/>

# APPENDIX C – Consultation Questionnaire

## Future Engagement and Communication

If you would like to receive updates about the development of our proposal and future engagement activities please select a preferred method of communication. Our preferred method of communication is by email, however if you do not have an email address then please provide your postal address.

Name

Yes, via email.  
Email address:

Yes, via post.  
Postal address:

Postcode:

**Thank you for taking the time to complete this questionnaire; your feedback is important to us.**

All feedback received will be reviewed and considered in the development of our proposal.

We will report back on the feedback we receive, but details of individual responses will remain anonymous and we will keep your personal details confidential.

For more information about our proposal and future activities please visit our project website at: [kent.gov.uk/thanetparkway](http://kent.gov.uk/thanetparkway)