



Quick Start

Thank you for purchasing the Mobile WiFi. This Mobile WiFi brings you a high speed wireless network connection.

This document will help you understand your Mobile WiFi so you can start using it right away. Please read this document carefully before using your Mobile WiFi.

For detailed information about the functions and configurations of the Mobile WiFi, refer to the online help on the web management page that comes with the Mobile WiFi.

For detailed instructions for logging in to the web management page, refer to "Logging In to the Web Management Page".

Getting to Know Your Mobile WiFi

Note:

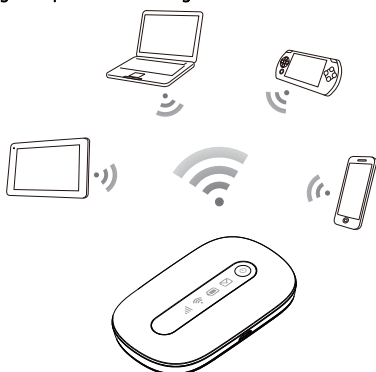
The Mobile WiFi function descriptions and illustrations in this document are for your reference only. The product you have purchased may vary.

Application Scenarios

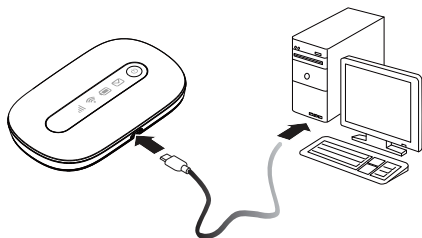
Wi-Fi devices (such as smartphones, tablet computers, and game consoles) or computers can all access the Internet through Mobile WiFi. The specific connection procedure depends on the operating system of the Wi-Fi device or computer. Establish a connection according to your device's specific instructions.

To access the Internet through a USB port connection, install the driver according to the instructions.

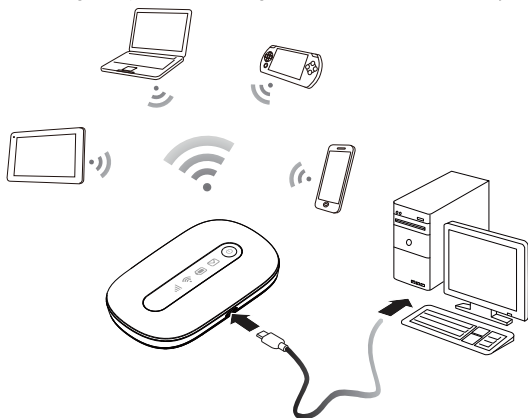
Scenario 1: Connecting multiple devices through Wi-Fi



Scenario 2: Connecting a single device through USB

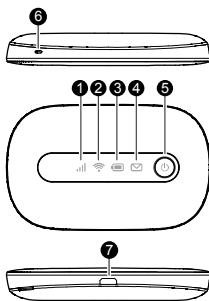


Scenario 3: Connecting multiple devices through Wi-Fi and USB simultaneously



Appearance

- ❶ Signal indicator
- ❷ Wi-Fi indicator
- ❸ Battery indicator
- ❹ SMS indicator
- ❺ Power button
- ❻ Strap hole
- ❼ Micro USB port



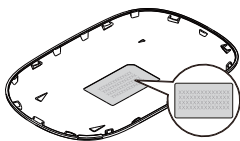
Indicator

Indicator	Status	Description	
	Signal	Green Orange Red	Strong signal Weak signal No signal
	Wi-Fi	Green	Wi-Fi turned on
		Battery	Green Blinking green Red
Messages		Green	New message
		Blinking green	Inbox full

SSID and Wireless Network Encryption Key

When a Wi-Fi device establishes a connection to the Mobile WiFi for the first time, you may need to enter the default Service Set Identifier (SSID) and wireless network encryption key. These are printed on the Mobile WiFi label.

It is recommended that you can log in to the web management page and change your SSID and wireless network encryption key.



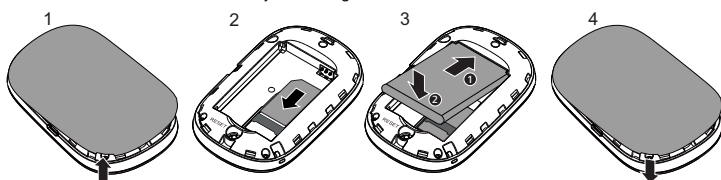
Getting Started

Installing a SIM Card and the Battery

Caution:

Use a standard SIM card compatible with the Mobile WiFi, otherwise you will damage your Mobile WiFi.

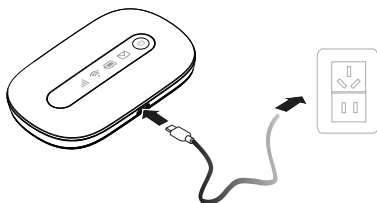
Install the SIM card and the battery according to the illustration.



Charging the Battery

If the Mobile WiFi has not been used for a long time or if the battery is fully depleted, the Mobile WiFi may not power on immediately after the charger is plugged in. Please charge the battery for a while before attempting to power on the Mobile WiFi.

Method 1: Use the power adapter to charge the device

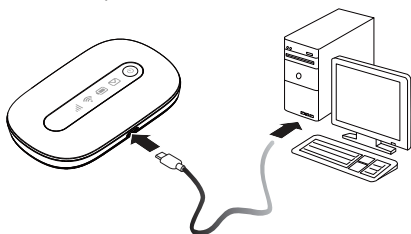


Note:

- Only use the power adapter compatible with the Mobile WiFi and provided by a designated manufacturer. Use of an incompatible power adapter or one from an unknown manufacturer may cause the Mobile WiFi to malfunction, fail, or could even cause a fire. Such use voids all warranties, whether expressed or implied, on the product.
- The power adapter is an optional accessory. If it is not included in the package, you may contact an authorized dealer to buy an adapter compatible with the Mobile WiFi.
- The Mobile WiFi's power adapter model is HW-050100X1W. X represents U, E, B, A, or J, depending on your region. For details about the specific adapter model, contact an authorized dealer.

Method 2: Charge the device through a computer connection

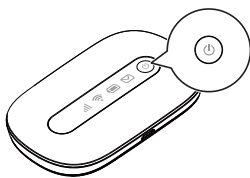
Use the data cable provided with your device to connect the Mobile WiFi to the computer.




Connecting to the Internet via Wi-Fi

The Mobile WiFi's management parameters have been preset according to your operator's requirements. You can quickly connect to the Internet by following these steps:


Step 1: Turn on the Mobile WiFi



Press and hold the  button until the indicators light up, indicating that the Mobile WiFi is turned on.

You can log in to the web management page and turn the fast boot function on or off. This function greatly reduces the Mobile WiFi's boot-up time.

Note:

- Press and hold the  button to turn off the Mobile WiFi.
- Please turn the fast boot function off when you are on an airplane.

Step 2: Establish a Wi-Fi connection (using a computer running the Windows XP operating system as an example)

1. Ensure that the Mobile WiFi's Wi-Fi function is on.
2. Select **Start > Control Panel > Network Connections > Wireless Network Connection**.

Note:

Before establishing a Wi-Fi connection, ensure that the computer is equipped with a wireless network adapter. If the computer indicates a wireless network connection, the wireless network adapter can be used. Otherwise, verify that your wireless network adapter is working properly.

3. Click **View available wireless networks** to view a list of available wireless networks.
4. Select the wireless network connection with the Mobile WiFi's SSID and click **Connect**.

Note:

- If the wireless network connection is encrypted, enter the correct wireless network encryption key.
 - The default SSID and encryption key are printed on the Mobile WiFi's label.
5. Wait a moment for the wireless network connection icon to appear in the system tray in the lower right corner of the computer screen. The wireless network connection is then established.

Step 3: Connect to the Internet

If data is transmitted, the Mobile WiFi will automatically connect to the Internet. If data is not transmitted for a period of time, the Mobile WiFi will automatically disconnect from the network connection.

Note:

You can log in to the web management page and enable or disable the automatic dialing while roaming function. If this function is turned off, when the Mobile WiFi enters a roaming network, it will automatically disconnect from the Internet connection that has already been established. You will need to manually establish this network connection again.

Logging In to the Web Management Page


1. Make sure the connection between the Mobile WiFi and the Wi-Fi device or computer is working normally.
2. Open the browser, and enter **http://192.168.1.1** in the address box.
3. Enter the user name and password to log in to the web management page.


Note:

- The default user name is **admin**.
- The default password is **admin**.

Daily Use

Battery Saving Mode

If no operation is performed on the Mobile WiFi within a preset period, the Mobile WiFi enters the standby mode, in which the battery indicator blinks slowly and the other indicators are off. To light up the other indicators, press the  button.

When the Mobile WiFi is being powered only by the battery, you can choose to enable or disable the automatic Wi-Fi turnoff function. If this function is enabled and if no Wi-Fi devices access the Mobile WiFi for a period of time, the Wi-Fi turns off automatically. You can press the  button to turn the Wi-Fi on again.

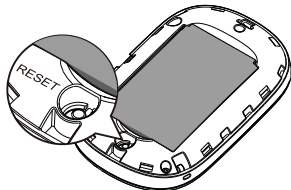
Verifying the PIN

If the PIN verification function is enabled, log in to the web management page and enter the correct PIN according to the instructions. PIN/PUK codes are supplied by your operator along with the SIM card. For details, please consult your operator.

Restoring to Factory Settings

If you forget some configuration parameters, you can restore the Mobile WiFi to its factory settings and then configure the Mobile WiFi again.

Press and hold the **RESET** button until all the indicators are off. The Mobile WiFi is then restored to its factory settings.

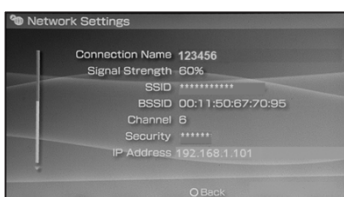
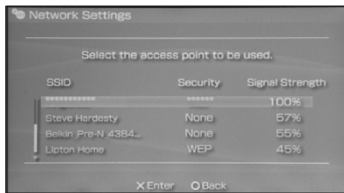
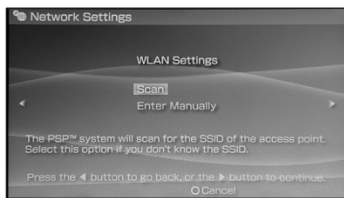
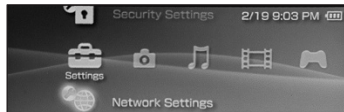


Note:

After you carry out this operation, the Mobile WiFi's personal configuration parameters will all be deleted. All configurations on the web management page will be restored to the factory settings.

Example 1: Connecting to a Game Console (for example, PSP) through Wi-Fi

1. On the PSP, turn on the WLAN.
2. Choose **Settings** > **Network Settings**.
3. Select **Infrastructure Mode**.
4. Select **New Connection**, and enter the connection name.
5. Select **Scan** to search for wireless networks. A list of access points will be displayed on the screen.
6. Select the access point with the Mobile WiFi's SSID, and press the ► button on the PSP. Confirm the SSID, and enter the correct wireless network encryption key.
7. Press the ► button to proceed to the next step, and then press the X button to save settings.
8. Select **Test Connection** to test whether the network connection is successful.
9. You can now open the browser and access the network.

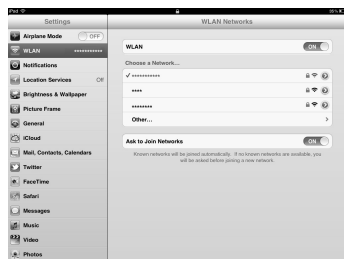


Example 2: Connecting to a Tablet Computer (for example, iPad) through Wi-Fi

1. Touch **Settings** > **WLAN** to turn on WLAN.
2. The tablet computer automatically searches for wireless connections and displays a list of access points.
3. Select the access point with the Mobile WiFi's SSID.
4. If required, enter the correct wireless network encryption key, and tap **Join**. (The lock icon indicates that the encryption key is required to connect to this wireless network.)

Note:

Wi-Fi devices, such as an iPhone, iPod touch, PS3 and NDSi, can all access the Internet through the Mobile WiFi. For specific operations, refer to the Wi-Fi device's user manual.



Tips

When the Mobile WiFi is in use for an extended period of time, it will become warm and may overheat. Should this happen, the Mobile WiFi will automatically close the network connection and turn off to protect itself from damage. If this occurs, place the Mobile WiFi in a well ventilated space to allow the heat to dissipate, then turn it on and continue to use it as normal.

If you are unable to use the Mobile WiFi as normal, try the following:

- Consult the online help on the web management page.
- Restart the Mobile WiFi.
- Restore the Mobile WiFi to the factory settings.
- Consult your operator.