

In This Issue:

- From the Desk of the President.....
- Sponsor Recognition, RP Goals
- Greetings for our Sections.....
- ASHRAE FWC – 2020/2021 Committee Chairs.....
- September Dinner Meeting
- GAC – BCxP Certification.....
- Membership Promotion
- ASHRAE bEQ Certification
- Research Promotion
- Electronic Communications.....
- Sponsorships.....

Upcoming 2020/2021 Events:

- September 15th, 2020 – Virtual Meeting
- October 20th, 2020 – Virtual Meeting
- October 23rd, 2020 – WiA Event
- November 6th, 2020 – Clayshoot
- November 17th, 2020 – Virtual Meeting
- December 15th, 2020 – Virtual Meeting
- January 19th, 2021 – Dinner Meeting
- February TBD, 2021 – Hockey Tour
- February TBD, 2021 – YEA Event
- March 5th, 2021 – Golf Tournament
- March 16th, 2021 – Dinner Meeting
- April 9th, 2021 – Shrimp Boil
- May 1st, 2021 – Fishing Derby
- May 18th, 2021 – Dinner Meeting
- June 15th, 2021 – Virtual Meeting

Zachary Loyacono
zachary.loyacono@tlc-eng.com
<http://www.ashrae-fwc.org/>

From the Desk of the President

Timothy N. Theriault



Happy Happy new ASHRAE year to all of the FWC Members!

Thank you very much for sticking with us during these times of pandemics, social distancing and uncertainty. We are continuing to do virtual chapter presentations for the next couple of meetings. I am hopeful that we can see some of you in person at our regularly scheduled annual outdoor event at FishHawk Sporting Clays. We will make every effort to abide by the safety guidelines recommended by the CDC and our governing bodies as we continue with our year. We are looking for an outside Holiday Party venue as well in December. We are planning to resume in person chapter meetings at the normally scheduled third Tuesday of each month starting in January. We are planning the annual Golf Tournament in March at the Eagles, Shrimp Boil on David Island in April, and have added a new annual Fishing Derby at Hula Bay to be held in May this year to name a few.

A big focus for this year will be to embolden our student branches and sections. We already have a new student branch submitted to be chartered at the next Member’s Council meeting for our society in November. The addition will be Peru, Lima at University of Engineering. Other Student branches we have are the USF in Tampa and PUCP in Peru student branches. We are also coordinating with advisors at Florida Polytechnic University for a new student branch of FWC to be chartered on that campus. We will have chapter scholarships awarded this year and hope to see good participation from all of our students. Student Resumes can be added to our FWC website. Please contact the student activity chair (abence@onicon.com) to find out more information.

Look for information on our Government outreach “Day on the Hill” in the spring as well as various YEA, WiA, Sustainability and Refrigeration events, including our annual hockey game in the spring.

I want to end by taking a moment to sincerely thank our new Board of Governors and committee participants for continuing to volunteer their time and efforts. These members play a major role in this chapter’s functionality and successful contribution to the ASHRAE society and our engineering community. Please see our page on chapter positions later on in this newsletter and feel free to contact any of us for information on how you can become involved in this chapter of our distinguished ASHRAE society.

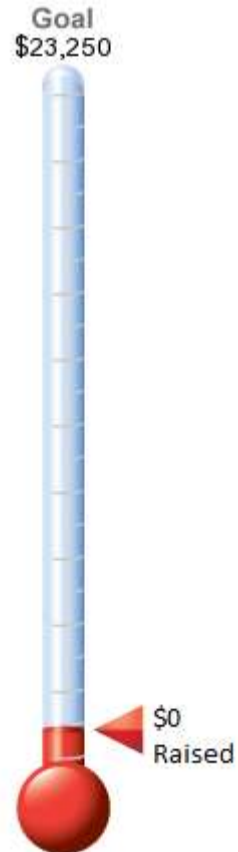
A Special Thank You to our ASHRAE Research Investors!

Individual Sponsors

YOUR NAME HERE

**Please Contact Tyler Owens for info on
how to donate**

towens@carrollair.com



Greetings for the Sarasota-Bradenton and Costa Rica Section Submitted by Timothy Theriault, Chapter President 2020-2021

Greeting to the Sections of our chapter. We are excited to start the ASHRAE year off right and hope to coordinate and plan some events. Be on the lookout for our upcoming meetings which we will be announced throughout the coming months from your section presidents. They will have a load of info for you to be able to participate in your chapter's events. Looking forward to a very successful year.

ASHRAE FWC - 2020-2021 Committee Chairs

President – Timothy N. Theriault	timothy.theriault@tlc-eng.com
President-Elect/Technology Transfer Chair – Ben Hair	bhair@hvac.me.com
Vice-President/Research Promotion – Tyler Owens, PE	towens@carrollair.com
Vice-President/Membership Promotion – Courtney Araiza, EI	caraiza@envelopgroup.com
Treasurer – Chris Janke	cjanke@adehvac.com
Secretary – Christen Quintana, EI	c.quintana@emeraldmep.com
Student Activities Chair – Ashley Bence	abence@onicon.com
Student Activities Co-Chair – Mike Costello, PE	m.costello@emeraldmep.com
Student Activities Co-Chair – Sarah Studt, EI	sarah.studt@tlc-eng.com
Government Advocacy Chair – Alex Glazer	aglazer@sladerossinc.com
Honors and Awards/Refrigeration – Tom Morgenthau, PE	tmorgenthau@powerdesign.us
Special Events Committee Co-Chair – Ryan Dickey	ryan.dickey@victaulic.com
Special Events Committee Co-Chair – Logan Haggarth	logan.haggarth@victaulic.com
Webmaster/Newsletter Editor – Zachary Loyacono, EI	zachary.loyacono@tlc-rng.com
Young Engineers in ASHRAE Co-Chair – Emilie Brun	ebrun@onicon.com
Young Engineers in ASHRAE Co-Chair – Gabriella DeFreitas	gdefreitas@onicon.com
Co-Historian – Isaac Crimm, PE	icrimm@stanweaver.com
Co-Historian/Publicity/Refrigeration – Daniel Vaughn, PE	daniel.vaughn@tlc-eng.com
Reception/Attendance – Marlon Vargas	mvargas@envelopgroup.com
Building Energy Quotient (bEQ) – Ross Montgomery, PE	rossmont@aol.com
Women in ASHRAE/Sustainability – Debie Horsey, PE	dhorsey@carrollair.com
Sarasota-Bradenton Section President – Chris Wells	cwells@tombarrow.com
Senior Advisor – Dan Rogers, PE	danfctc@verizon.net



Sept. Virtual Lunch Meeting Flyer

Calendar Year: 2020

Lunch Meeting

AIR CONDITIONING SYSTEMS FOR TROPICAL HUMID CLIMATES

Meeting Summary:

We welcome you to our Virtual September Meeting of the 2020-2021 ASHRAE year. This meeting is free and you can still earn CE credits for this presentation. Our presenter is Chandana Dalugoda, C. Eng, a managing Partner of Chandana Dalugoda Consultants, an engineering practice in Sri Lanka and is a senior consulting engineer in the HVAC & R field. Dalugoda has been engaged in the field of HVAC&R field for 39 years. Dalugoda is also an ASHRAE Fellow and a Distinguished Lecturer. The presentation will cover air conditioning systems for tropical humid climates. Mr. Dalugoda believes there are limitations of applying some energy conservation methods such as free cooling due to high humidity levels. Addressing the indoor air quality, large amount of cooling load comprises of ventilation air quantity, especially in densely populated buildings thus cooling load increases substantially. This presentation discusses techniques to overcome high ventilation loads in hot humid climates, such as applying heat recovery and demand control ventilation systems

When is this?

Tuesday, Sept. 15th, 2020
12:00 PM - 1:30 PM (EDT)

Where?

Online Virtual meeting
Using the ASHRAE gotomeeting platform
Get your link from our website

What Cost?

\$0 for FWC Chapter members
\$0 for Non-FWC Chapter members

RSVP

at

www.ashrae-fwc.org/ashrae-events/

For questions, contact:
Benjamin Hair
bhair@hvac.me.com
813-695-9145



Government Advocacy Committee

Submitted by Alex Glazer, FWC GAC Chair 2020-2021

As we advance the awareness of ASHRAE to all, we urge everyone to take advantage of the benefits that the ASHRAE society has to offer. There are Certifications available to benefit your credentials. Highlighted in this issue is the ASHRAE BCxP. From ASHRAE.org:

BCxP – Building Commissioning Professional Certification



ASHRAE has certified more than 2,500 professionals who have demonstrated their knowledge and expertise in the HVAC&R industry. Gain a competitive edge by earning an ASHRAE certification in building commissioning. The BCxP certification, an ANSI-Accredited Personnel Certification Program under ISO/IEC 17024 (#1139), validates competency to do the following:

Lead, plan, coordinate and manage a commissioning team to implement commissioning processes in new and existing buildings.

The BCxP certification has been recognized by the U.S. Department of Energy (DOE) as meeting the Better Buildings Workforce Guidelines (BBWG).

- ASHRAE's BCxP certification program validates competency against scheme requirements for the Building Commissioning Professional set forth in the Better Buildings Workforce Guidelines.
- Elevate your reputation among peers, in the workplace and among clients.
- Demonstrate competency in critical building commissioning knowledge, skills and abilities.

Visit ASHRAE's Society page for additional information and to apply for your BCxP:

<https://www.ashrae.org/education-certification/certification/bcxp-building-commissioning-professional-certification>

Membership Promotion

Submitted by Courtney Araiza, EI, FWC MP Chair 2020-2021

As a fellow member of the engineering community here in the Florida West Coast area I am reaching out to invite you to learn more about ASHRAE and our local [chapter](#).

We are a successful and growing chapter of [ASHRAE](#), offering the local engineering community an opportunity to network, and take advantage of the many benefits of ASHRAE membership. ASHRAE is the largest international organization focused on shaping the built environment, with over 57,000 members in 132 countries.

We welcome you to attend any of our meetings or [events](#) at your convenience. If you would like to learn more about ASHRAE, our chapter, or membership in general, please let me know. I'd be happy to answer any questions, and look forward to welcoming you at our next chapter event. You may contact me at caraiza@envelopgroup.com, or 813-618-4989.

New members receive one year complimentary subscription to the [ASHRAE Handbook Online](#) in addition to a print copy of the annual ASHRAE Handbook, and discounts on all [publications](#).

[Continuing Education & Certification](#): As a member you will receive discounted registration on all ALI seminars and courses, which provide high-quality, authoritative, and credible technical information.

[Get Involved Locally](#): Chapter and Regional events such as Chapter meetings, and Chapter Regional Conference's (CRCs) are a great way to meet others in your area and expand your network.

[Participate on Technical or Standards Committees](#): The knowledge you will gain from volunteering with ASHRAE is priceless. Take a look at the committees and volunteer opportunities available to you, and learn how to participate.

[Society Meetings and Conferences](#): Make time to attend at least one of ASHRAE's meetings or conferences this year, and network with other members from around the world.

[ASHRAExChange](#): If you haven't done so yet, sign up to participate in the newest online discussion forum for questions, answers, and hot topics relating to the HVAC&R industry.

Membership Promotion

Submitted by Courtney Araiza, EI, FWC MP Chair 2020-2021

Are You An Associate Who Wants to Advance to Member?

To advance from Associate to Member, you must update your ASHRAE bio online with your industry experience, and notify membership@ashrae.org that you have an updated bio and wish to be considered for grade advancement.

Steps for updating your biography:

1. Log into www.ashrae.org by selecting 'Join or Login' in the upper right corner. Enter your email address and password then select 'Sign In.'
2. Select "My Account" in the upper right corner of the homepage.
3. Select the 'Biographical Information' tab along the top tab options. Add all of your educational history, relevant professional licenses and work history.

Why advance?

1. Prestige: While this should be of value to North American members (who wants to be an "Associate" when they can be a "Member"?), this is important to all of our Region's members. We happen to be one of the fastest growing regions and this helps keep our total membership above water!
2. Chapter recognition through newsletter: Gives recognition to advancing member, allows MP chair to educate chapter members on the benefits of advancement.
3. Chapter recognition at meeting: Same as 2 (above). Especially at designated MP Night chapter meetings.
4. To serve on a technical committee: Technical Committees are responsible for the vitally important ASHRAE Handbooks. Allows MP chair to publicly recognize chapter members who serve on TCs. Also allows MP chair to educate members on different facets of ASHRAE (Grassroots, TCs). And it encourages "TC" members to attend chapter meetings.
5. To serve in a chapter officer role: We believe that ASHRAE membership is vital to our individual careers and the leadership training available for very modest priced annual dues. To achieve the additional training (beyond committee chairs) available at the officer level, full grade membership is prerequisite.
6. To serve in a regional role: See #5 above. Additional leadership training is available at regional and Society levels.
7. To qualify for ASHRAE Fellow and other Society awards: The term "Fellow" is widely recognized in many technical, educational, and research societies and honors exceptional achievement and service. This and other society awards have Member Grade as a prerequisite.
8. You can add Member ASHRAE to your email tag: This simple addition to your email signature increases awareness of ASHRAE, provides free advertising, and adds prestige to the member and their company.
9. Allows our chapter to shine among other chapters: Regional recognition and contests offer chapter recognition and "bragging rights". Chapter presidents and regional officers should encourage this recognition.
10. Society recognition in Insights: All 57,000 plus members receive a copy of Insights.
11. Proves to your employer that you take your career seriously: You add value to your employer through continuing education, networking, and leadership training with an impressive return on investment. You differentiate from colleagues by maintaining membership and take the further step of advancing to full Member status.
12. Proves to your professional community that you take your career seriously: Savvy consumers of your products and services are increasingly using the internet and ratings services to differentiate among possible professional candidates. Advertising full member status proves that you have established a long term relationship with the most important society serving the HVACR industry.

Advancing is a great thing for you and your chapter. I hope you will consider doing that this year. If you are unsure about your eligibility of advancement or any other questions, drop a note to the MP chair at caraza@envelopgroup.com or catch me at a dinner meeting or chapter event. If you have any projects that have obtained bEQ certifications in this chapter's area, please let FWC know for tracking purposes. Please email info to: rossmont@aol.com

Membership Promotion

Submitted by Courtney Araiza, FWC MP Chair 2020-2021



We are thankful for your membership and your referrals continue to be the top reason new members join! In an effort to keep the momentum going, we invite you to Connect-a-Colleague with ASHRAE today.

[Connect-a-Colleague Now](#)

It takes less than one minute, and there is no need to login. Just enter your name & email address, and your colleague's name & email address, and press send. That's it!

As an ASHRAE member, your referral is a very powerful tool that can benefit your colleagues, your Society, and the HVAC&R industry. **THANK YOU** again for doing your part to help the Society grow.

[If your ASHRAE Membership expired or expires soon.](#)
[Click here to Renew Online](#)

— [Get To Know ASHRAE](#) —

For questions about Membership contact **Timothy Theriault** at timothy.theriault@tlc-eng.com



ASHRAE's Building EQ Portal provides a quick energy analysis that benchmarks a building's energy performance. Building EQ assists in the preparation of an ASHRAE Level 1 Energy Audit to identify means to improve a building's energy performance including low-cost, no-cost energy efficiency measures and an Indoor Environmental Quality survey with recorded measurements to provide additional information to assess a building's performance.

Two different evaluations can be used independently to compare a candidate building to other similar buildings in the same climate zone or together for an assessment of a building's design potential compared to actual operation:

In Operation compares actual building energy use with metered energy information.

As Designed compares energy use based on the building's physical characteristics and systems with standardized energy use simulation.

Building EQ Portal

The new Building EQ Portal is now available for the In Operation evaluation. The As Designed evaluation will be available soon.

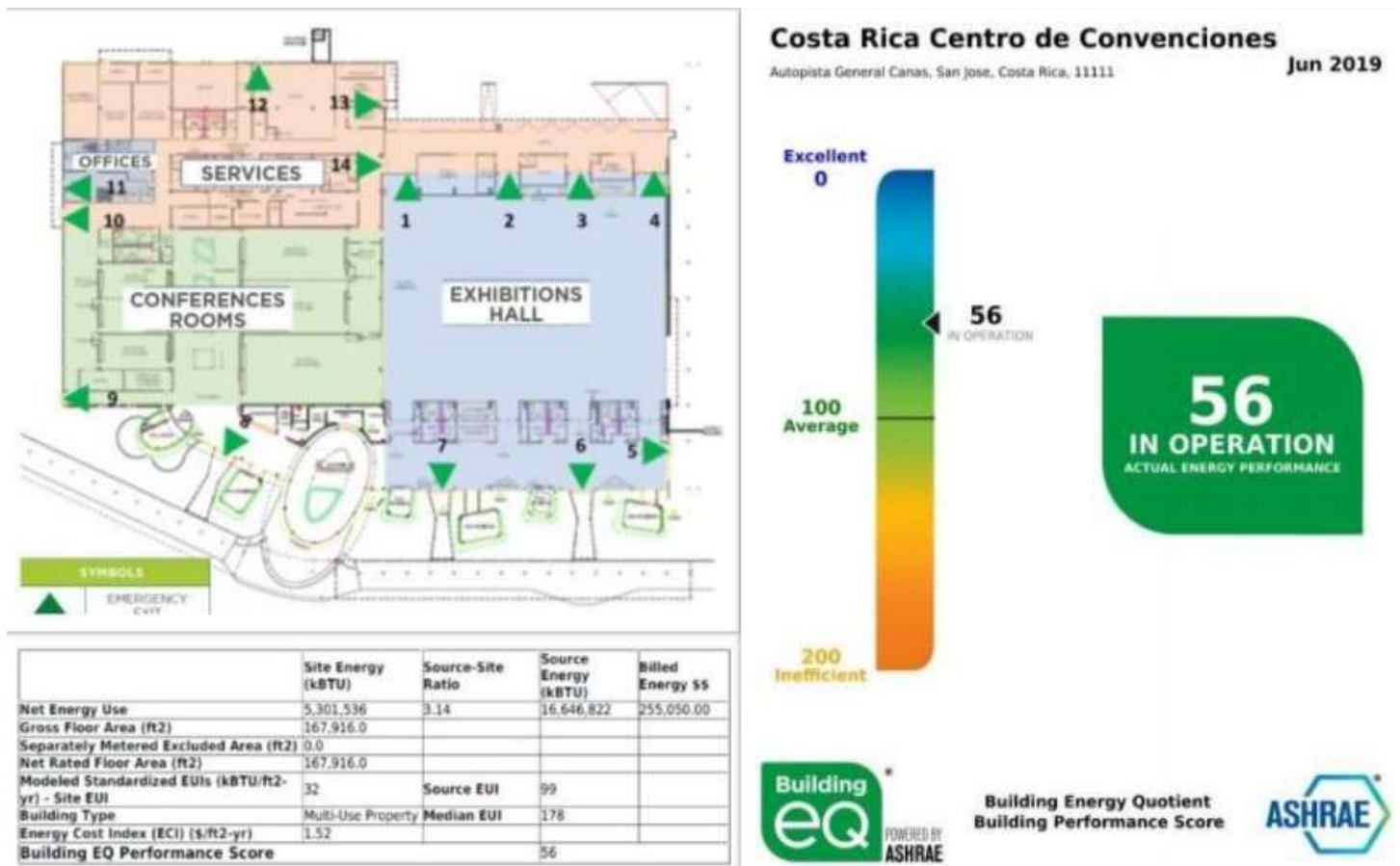
- Online data entry and submission process
- Metered energy data exchange from ENERGY STAR™ Portfolio Manager
- Median EUI calculation aligned with ENERGY STAR™
- Building EQ Performance Score visible to all users on the main input screen at all times
- Redesigned label shows Building EQ Performance Score on a barometer/scale. No more letter grades!
- Standard reports can be automatically generated by credentialed users
- Improved submission approval process
- Help and validation information is built into the system

Learn more on how to access the portal, initiate a project, and begin a submission:

<https://www.ashrae.org/technical-resources/building-eq/building-eq-portal>

Building Energy Quotient (bEQ) Report Submitted by Ross Montgomery, PE, Fellow ASHRAE

Costa Rica’s San Jose Convention Center is an advanced architectural work, responsible for the environment, and inspired by the biodiversity and culture of Costa Rica. Built in 2017, it was designed to generate unique experiences for visitors within a sustainable, modern, and versatile space. The 10 hectare property has a constructed area of just under 168,000 square feet, and is equipped with some of the latest technology designed to make events a great experience. The convention center carries a bEQ score of 56, which is characterized as “very energy efficient”.



Costa Rica Centro de Convenciones

Autopista General Canas, San Jose, Costa Rica, 11111

Jun 2019

Excellent

0

100

Average

200

Inefficient

56

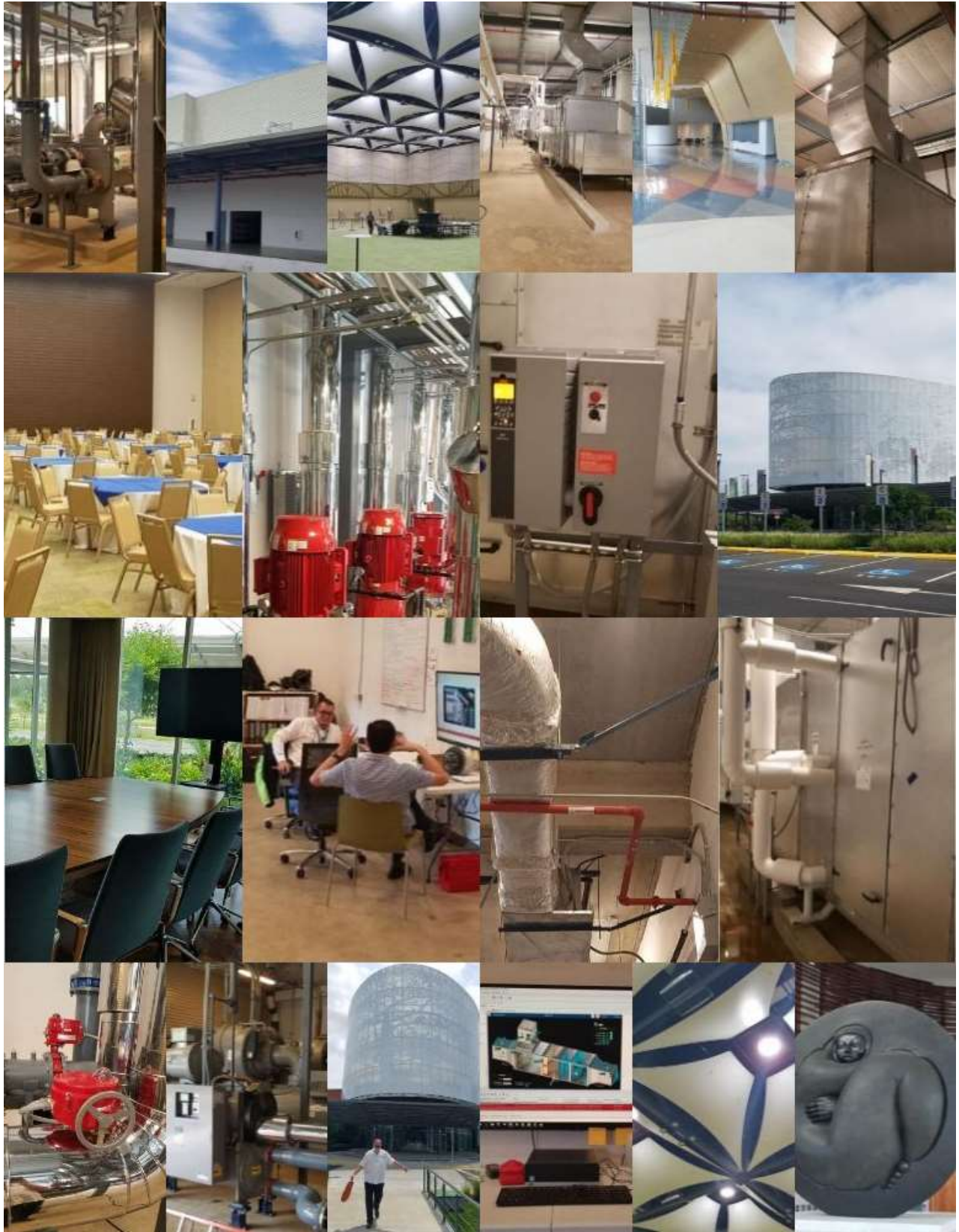
IN OPERATION

56
IN OPERATION
ACTUAL ENERGY PERFORMANCE



Building Energy Quotient
Building Performance Score





Pictures submitted by Ross Montgomery, PE

Research Promotion

Submitted by Tyler Owens, PE, FWC RP Chair 2020-2021

Since 1919, ASHRAE has supported research to improve the quality of life. ASHRAE Research impacts the industry by improving the way HVAC&R systems work, how they are applied, and allow development of technical information to create standards and guidelines, which serve as the basis for testing and design practices around the world.

The Society funds thousands of projects addressing topics such as sound, duct design, the effect of oil refrigerants, load calculations, thermal conductivity, simplified energy analysis procedures, weather data, refrigerant property data, fire and smoke control, and solar design. The most significant ASHRAE research is in the areas of human comfort and the properties of materials and systems used in buildings and refrigeration systems.

How does ASHRAE Research help my health?

ASHRAE Research is working in the health arena to help:

- Prevent more than 70,000 surgical site infections that occur each year
- Decrease the spread of airborne diseases
- Improving cancer treatment methods

How does ASHRAE Research help me in the workplace?

ASHRAE Research is learning more about how commercial buildings can:

- Conserve energy in hot and humid climates
- Select boilers for efficient heat use
- Allow drifting temperatures to save energy

How does ASHRAE Research help me in my home and my children at their school?

ASHRAE Research is:

- Exploring whether temperature and air quality improve the performance
- Understanding the relationship between occupant health and ventilation rates
- Evaluating how food preservation is influenced by storage conditions

Whether it's improving the work setting in an office building to increase productivity or providing guidelines for emerging technologies, ASHRAE Research helps engineer the world we live, creating better indoor and outdoor environments around the globe.

This would not be possible without the individuals and organizations that have chosen to support ASHRAE's vision with their financial contributions. To continue our progress, we need your support as well. To make a donation to ASHRAE Research, please click the link below:

[Contribute to ASHRAE Research Today](#)

*Please make sure you note "Florida West Coast Chapter" as your "Assigned ASHRAE."

Thank you for your time,

Tyler Owens, PE
ASHRAE FWC RP Chair 2020-2021

Electronic Communications

Submitted by Christen Quintana, EI, FWC EC Chair



We NEED you to “like” our Facebook page

Go Here:

<https://www.facebook.com/ashraefloridawestcoast>

Tag yourself in the pictures.

Also, visit our chapter website here:

<http://www.ashrae-fwc.org/>

This Newsletter is sponsored by the following:

SPONSORSHIPS ARE AVAILABLE

Want your business card here and reach out to over 1000 people monthly? See the next two pages for pricing.

2020-2021 NEWSLETTER AND WEBSITE SPONSORSHIP PRICING PACKAGES

ASHRAE (formerly known as American Society of Heating, Refrigerating and Air Conditioning Engineers) is a building technology society with more than 50,000 members worldwide. The Society and its members focus on building systems, energy efficiency, indoor air quality, refrigeration and sustainability within the industry. Through research, standards writing, publishing and continuing education, ASHRAE shapes tomorrow's built environment today.

ASHRAE was founded in 1894 at a meeting of engineers in New York City and has held an annual meeting since 1895. Until 1954 it was known as the American Society of Heating and Ventilating Engineers (ASHVE); in that year it changed its name to the American Society of Heating and Air-Conditioning Engineers (ASHAE). Its current name and organization came from the 1959 merger of ASHAE and the American Society of Refrigerating Engineers (ASRE). The result, ASHRAE, despite having 'American' in its name, is an influential international organization. Amongst other international activities, it helps organize international events.

The society promotes the design and installation of HVAC systems at the highest levels, through publication of Data Books and Handbooks covering all relevant topics, legislative involvement, establishment and support of a research foundation, and standardization of design qualifications.

The Florida West Coast Chapter of ASHRAE was chartered in February 1956 to promote industry standards and best practices at the local level. The local chapter enjoys a strong meeting participation, and generates operating revenue through chapter activities like the annual golf tournament, sporting clay shoot, and specialized learning opportunities with visiting lecturers. A large portion of the proceeds from these activities goes to establish and maintain various local college scholarships, to promote further interest in the HVAC engineering profession following graduation.

Along with the aforementioned activities, our most valuable resource for generating operating capital remains sponsorships. Via its monthly newsletter and newly updated website, <http://www.ashrae-fwc.org>, the Florida West Coast Chapter of ASHRAE is a resource for its members, and can be an effective tool for promotion of your company, product, or service.

The newsletter is published multiple times per ASHRAE year (September through June of the following year), and is distributed via email ahead of the monthly chapter meetings. In each newsletter, the chapter officers contribute articles that focus on industry happenings, legislative changes, educational opportunities, and more. The current email recipient list is over 1,000 individuals. The chapter website is updated monthly, and includes information on upcoming events, event photographs, posts resumes and career opportunities, and contains useful links to industry resources. The website currently has over 40,000 individual IP computer hits since its launch in September 2013.

2020-2021 NEWSLETTER AND WEBSITE SPONSORSHIP PRICING PACKAGES

Please consider sponsoring the Florida West Coast Chapter of ASHRAE’s newsletter and/or website. Your business card will be published multiple times per ASHRAE year in the emailed newsletters, and can be updated at any time with a new copy if desired. Sponsorship on the website includes a business card on the sponsorship page and a link to your company website.

For the 2020-2021 year, the Chapter Board of Directors has decided upon the following rate as detailed below. In appreciation of the support from our sponsors during this difficult economic time, we want advertising in the chapter newsletter and website to remain affordable and accessible.

2020-2021 ASHRAE FWC Advertising Rates (All Rates are for the ASHRAE Year - September 2020 through June 2021)		
Ad Type and Size:	ASHRAE FWC Members Fee:	Non-Members Fee:
10 Monthly Newsletter Spots (Business Card Size) <i>Reaches over 1,000 people per month!</i>	\$100.00	\$150.00
10 Month Website Spots (Business Card and Link Included) <i>Website has over 20,000 hits!</i>	\$250.00	\$300.00
10 Monthly Newsletter and 10 Month Website Spots	\$300.00 <i>A savings of \$50.00!</i>	\$400.00 <i>A savings of \$50.00!</i>

Please indicate your interest in sponsoring us by responding to the email address below and remit your business card in either PDF or JPEG formats to Tyler Owens. Please send payment to the address below made out to "ASHRAE Florida West Coast". Sponsorship fees shall be prorated based on the number of newsletter editions and website months remaining upon the purchasing of your sponsorship plan.

Thank you for considering ASHRAE Florida West Coast Chapter's newsletter and website in your marketing strategy!

towens@carrollair.com

Attn: Tyler Owens
 ASHRAE Florida West Coast Chapter
 3711 West Walnut Street
 Tampa, FL 33607