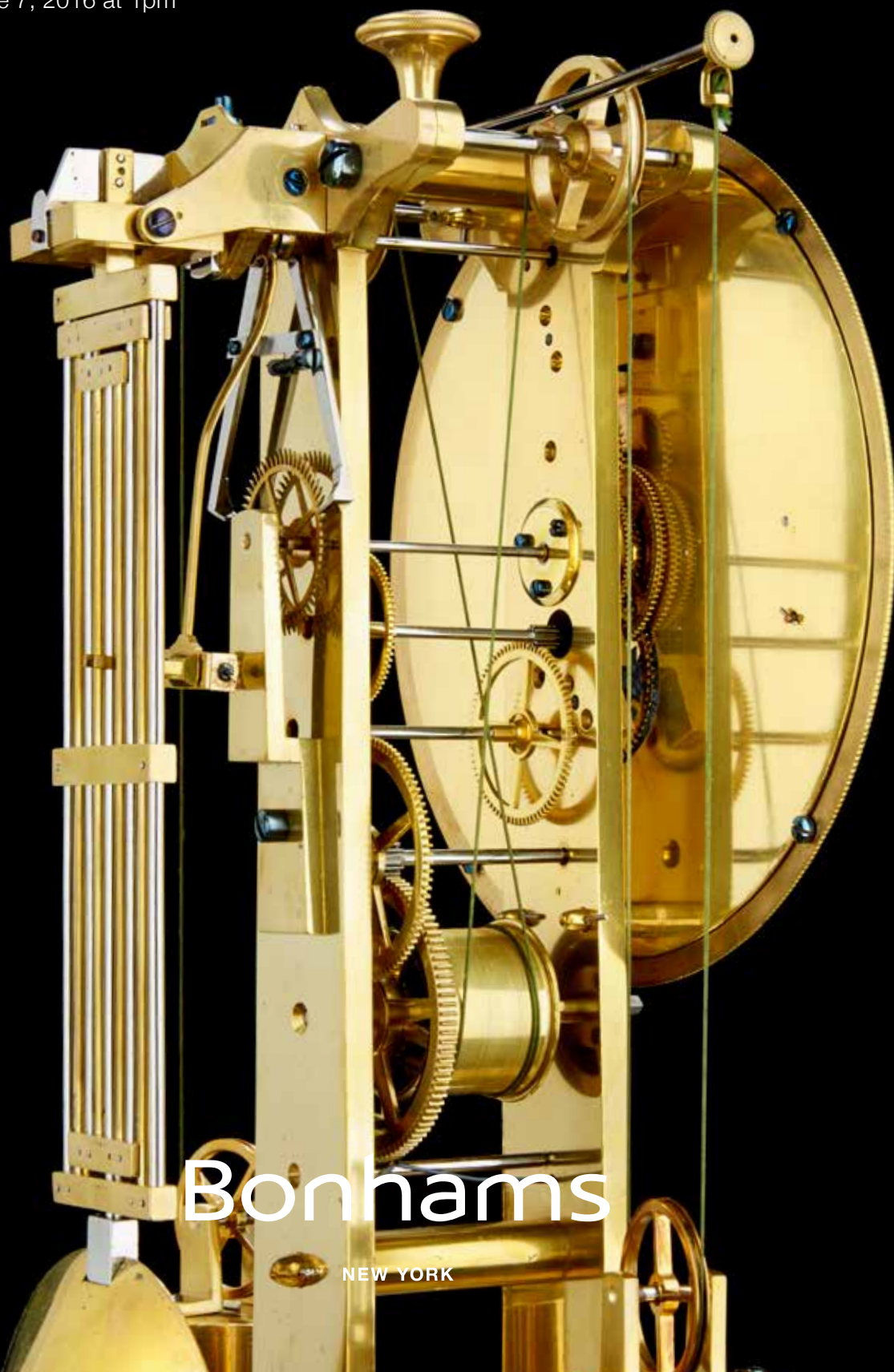


# THE ART OF TIME

Fine American and European  
Watches and Clocks

Tuesday June 7, 2016 at 1pm  
New York



# Bonhams

NEW YORK





# THE ART OF TIME

## Fine American and European Watches and Clocks

Tuesday June 7, 2016 at 1pm  
New York

### BONHAMS

580 Madison Avenue  
New York, New York 10022  
[bonhams.com](http://bonhams.com)

### PREVIEW

Saturday June 4, 12pm to 5pm  
Sunday June 5, 12pm to 5pm  
Monday June 6, 10am to 5pm  
Tuesday June 7, 10am to 12pm

**SALE NUMBER:** 23408

Lots 1 - 153

**CATALOG:** \$35

### BIDS

+1 (212) 644 9001  
+1 (212) 644 9009 fax

To bid via the internet please visit  
[www.bonhams.com/23408](http://www.bonhams.com/23408)

Please note that telephone bids must be submitted no later than 4pm on the day prior to the auction. New bidders must also provide proof of identity and address when submitting bids. Telephone bidding is only available for lots with a low estimate in excess of \$1000.

Please contact client services with any bidding inquiries.

Please see pages 94 to 99 for bidder information including Conditions of Sale, after-sale collection and shipment.

**Please see page 97  
for an Important Notice  
concerning Watches.**

### INQUIRIES

#### Watches and Clocks

Jonathan Snellenburg  
Director  
+1 (212) 461 6530  
[jonathan.snellenburg@bonhams.com](mailto:jonathan.snellenburg@bonhams.com)

Sandy Quang  
Business Manager  
+1 (917) 206 1697  
[sandy.quang@bonhams.com](mailto:sandy.quang@bonhams.com)

London Clocks  
James Stratton  
+44 (0) 20 746 8 8364  
[james.stratton@bonhams.com](mailto:james.stratton@bonhams.com)

London Watches  
Jonathan Darracott  
+44 (0) 20 7447 7412  
[jonathan.darracott@bonhams.com](mailto:jonathan.darracott@bonhams.com)

Automated Results Service  
+1 (800) 223 2854

### ILLUSTRATIONS

Front cover: Lot 114  
Inside front cover: Lot 147  
Inside back cover: Lot 114  
Back cover: Lots 92, 93, 94, 95





**PROPERTY OF A COLLECTOR**

**1  
THREE BALL RAILWAY TRADE UNION WATCHES**

Hamilton Watch Co., No. 28611, 21-jewel *Brotherhood of Locomotive Engineers Standard*; No. 42437, 21-jewel *Order of Railway Conductors Official Standard*; No. 28517, 17-jewel *Brotherhood of Railroad Trainmen Standard*, with wheel pattern damascening; all Grade 999 18-size, with signed movements and dials, in Keystone metal cases

**US\$3,000 - 4,000**

See illustration of the first; images of the remaining watches in the on line catalog.

**2  
ELGIN. A FINE SILVER OPEN FACE U S NAVY DECK WATCH WITH WINDING INDICATOR**

Elgin Nat'l. Watch Co., No. 16748904, circa 1911  
21-jewel damascened grade 412 18-size movement, precision regulator, lever set, silver cuvette, white enamel dial with minute ring, bold roman chapters, 40-hour winding indicator, subsidiary seconds, blued hands, substantial plain Deuber silver case engraved with US Navy inventory number 16748904  
63mm

**US\$1,000 - 1,500**

**3  
ELGIN. A FINE AND RARE STAINLESS STEEL OPEN FACE CENTER SECONDS HACK WATCH WITH WINDING INDICATOR**

B. W. Raymond, Nos. 28407038 and 41758538  
24-jewel grade 478/581 16-size damascened movement, micrometer regulator, pendant set with hack feature, seconds attachment with gold train white enamel Montgomery – type dial, arabic minute ring, bold 24-hour Arabic chapter ring, 40-hour winding indicator, subsidiary seconds, blued hour and minute with red sweep seconds hands, Star screw back case  
52mm

**US\$1,800 - 2,200**





4

**ELGIN. A FINE AND RARE OPEN FACE MILITARY CENTER SECONDS NAVIGATION WATCH WITH 24-HOUR DIAL AND WINDING INDICATOR**

B. W. Raymond, unnumbered, possibly a prototype, the movement signed "U.S. Army A. C."

22-jewel grade 581 16-size damascened movement, micrometer regulator, lever set, white GCT enamel dial, minute ring, 24-hour arabic chapter ring, winding indicator with red hand, blued hour, minute and seconds hands, now in a Keystone base metal screw back case  
52mm

US\$2,000 - 2,500

An example of the Elgin 581 Master Navigation Watch produced for the Army Air Corps during early years of World War II. The 21-jewel movement has an additional jewel in the center seconds attachment giving it 22 jewels in total. Earliest models were given white dials and rarely a winding indicator.



5

**ELGIN. A HUNTER CASED WATCH WITH WINDING INDICATOR AND AN OPEN FACE WATCH WITH 24-HOUR DIAL**

Two watches: No. 10854070, a 21-jewel 18-size *Veritas* with damascened divided  $\frac{3}{4}$  plate movement, lever set, gold jewel settings, white enamel dial with bold arabic chapters, 40-hour winding indicator and blued hands, engraved gold filled case; No. 20083439, a 21-jewel 16-size *Father Time* with damascened divided  $\frac{3}{4}$  plate movement, lever set, gold jewel settings, white enamel dial with 24-hour chapters, blued hands, metal display case  
56 and 52mm

US\$1,200 - 1,800



6

**ELGIN. A FINE 14K ENGRAVED GOLD HUNTER CASED DOCTOR'S CENTER SECONDS WATCH**

Elgin Nat'l Watch Co., No. 926584  
15-jewel 16-size damascened divided  $\frac{3}{4}$  plate adjusted movement, jewels in settings, lever set, gold cuvette, signed white enamel dial with fifth second and minute rings, roman chapters, blued hands, 14K gold Deuber case finely engraved with band of foliage  
51mm 114.6grams

US\$1,500 - 2,000





8



9



7

7

**ELGIN. A FINE 14K GOLD OPEN FACE WATCH WITH CONVERTIBLE MOVEMENT**

Elgin Nat'l Watch Co., No. 942218

21-jewel grade 91 16-size elaborately damascened three finger bridge movement, micrometer regulator, gold train, lever set, gold cuvette, white enamel dial, arabic chapters, subsidiary seconds, blued hands, Keller & Untermeyer fluted 14K gold case with monogram 51mm, 109.8 grams

US\$3,000 - 5,000

**ANOTHER PROPERTY**

8

**ELGIN. A FINE MULTI COLORED 14K GOLD HUNTER CASED WATCH WITH CONVERTIBLE MOVEMENT**

Elgin Nat'l Watch Co., No. 607201

21-jewel 16-size elaborately damascened adjusted 3/4 plate convertible movement, jeweled in gold settings, bimetallic balance, blued over coiled spring, micrometer regulator, gold train, lever set, gold locket frame cuvette, white enamel double sunk dial, minute ring, roman chapter ring, subsidiary seconds, blued hands, 14K gold B.P&W case with applied multi colored stag, reeds and floral swag, bezels enhanced with vines 50mm, 134.8 grams

US\$4,000 - 6,000

**PROPERTY OF A COLLECTOR**

9

**ELGIN. A FINE 14K GOLD OPEN FACE WATCH WITH CONVERTIBLE MOVEMENT**

Elgin Nat'l Watch Co., No. 942175

21-jewel grade 91 16-size elaborately damascened adjusted three finger bridge convertible movement, jeweled in gold settings, gold train, lever set, gold cuvette, white enamel double sunk dial, arabic chapters, subsidiary seconds, blued Breguet hands, 14K gold engine turned Keystone case 52mm, 122.2 grams

US\$3,000 - 5,000



10

**10  
ELGIN. A FINE 14K GOLD BOX HINGE OPEN FACE WATCH  
WITH CONVERTIBLE MOVEMENT**

Elgin Nat'l Watch Co., No. 942280  
21-jewel grade 91 16-size elaborately damascened adjusted three  
finger bridge convertible movement, jeweled in gold settings, gold  
train, lever set, glazed dust cap, gold cuvette, white enamel dial,  
roman chapters, subsidiary seconds, blued Breguet hands, rose gold  
Shiebler case with hinged bezel  
52mm, 139.3 grams

**US\$3,000 - 5,000**



11

**11  
ELGIN. A FINE MODIFIED 14K GOLD HUNTER CASED WATCH  
WITH FANCY DIAL**

Elgin Nat'l Watch Co., not numbered, but signed F. C Merrill  
Elaborately damascened divided  $\frac{3}{4}$  plate 3rd model 16-size movement  
jeweled through the barrel, gold settings, regulator with additional  
micrometer adjustment, lever set, gold cuvette, white enamel dial  
with gilt arabic chapters, subsidiary seconds, gilt scroll hands, engine  
turned case enhanced with scroll cartouche  
52mm 121.5 grams

**US\$2,500 - 3,500**



12

**12  
ELGIN. A FINE 18K GOLD HUNTER CASED WATCH WITH  
CONVERTIBLE MOVEMENT**

Elgin Nat'l Watch Co., No. 607090  
21-jewel grade 72 16-size elaborately damascened  $\frac{3}{4}$  plate convertible  
movement, jeweled in gold settings, gold train, lever set, glazed dust  
cap, gold cuvette, double sunk white enamel dial with roman chapters,  
subsidiary seconds, blued Breguet hands, gold case with elaborately  
monogrammed lids  
53mm, 148.6 grams

**US\$3,000 - 5,000**





14



15



13

13

**ELGIN. A FINE 18K GOLD OPEN FACE WATCH WITH CONVERTIBLE MOVEMENT**

Elgin Nat'l Watch Co., No. 607101, retailed by Bailey, Banks & Biddle, Philadelphia

21-jewel grade 72 16-size elaborately damascened  $\frac{3}{4}$  plate convertible movement, signed for the retailer, jeweled in gold settings, gold train, lever set, gold cuvette, double sunk white enamel dial with arabic chapters, subsidiary seconds, gold scroll hands, plain gold Shiebler case

51mm 113.9 grams

US\$3,000 - 5,000

14

**ELGIN. A FINE 14K ENGRAVED GOLD OPEN FACE DOCTOR'S CENTER SECONDS WATCH**

Elgin Nat'l Watch Co., No. 632225

15-jewel 16-size damascened divided  $\frac{3}{4}$  plate adjusted movement, jewels in settings, lever set, gold cuvette, signed white enamel dial with fifth second and minute rings, roman chapters, blued hands, 14K gold case finely engraved with foliage and scenic vignette

51mm 105.7 grams

US\$1,200 - 1,800

15

**ELGIN. A FINE 14K GOLD ENGRAVED HUNTER CASED CONVERTIBLE MOVEMENT WATCH WITH FANCY DIAL**

No. 701521

Specially finished 15-jewel Grade 86 16-size three finger bridge movement with gold escape wheel and train, jeweled with gold settings, lever set, monogrammed gold cuvette, enamel dial with arabic chapters within band of gilt leaves and flowers, subsidiary seconds, delicate Breguet hands, the lids of the case engraved with scrolls

51mm 117.9g

US\$1,200 - 1,800





16

16  
**E. HOWARD & CO. A VERY RARE 14K GOLD OPEN FACE BALL RAILWAY TRADE UNION WATCH**

Order of Railway Conductors, No. 308436  
 17-jewel 18-size damascened  $\frac{3}{4}$  plate series VIII movement signed ORC, jewels in settings, stem set, gold cuvette, white enamel ORC dial with minute ring enclosing arabic chapters, subsidiary seconds, blued hands, plain case  
 54mm

US\$3,000 - 5,000



17

17  
**THREE BALL RAILWAY TRADE UNION WATCHES**

American Waltham Watch Co., No. B207397, 21-jewel, *Order of Railway Conductors Official Standard*; No.B0056648, 17-jewel, *Brotherhood of Railroad Trainmen Official Standard*; No.B215065, 19-jewel, *Brotherhood of Locomotive Firemen & Enginemen Official Standard*; all 16-size, with signed movements and dials, in Ball model metal Keystone cases

US\$3,500 - 4,500

See illustration of the first; images of the remaining watches in the on line catalog.



18

18  
**WALTHAM. A RARE SILVER HUNTER CASED WATCH**

American Watch Co., No. 40118  
 17-jewel M1859 18-size gilt  $\frac{3}{4}$  plate movement with Fitt's patent safety pinion, key wound and set, jewels in gold settings, diamond endstone, counterpoised long lever, bimetallic balance, flat blued spring, plain index regulator, silver cuvette, signed double sunk white enamel dial, roman chapters, subsidiary seconds, blued hands, formerly engine turned C. E. H & Co. case  
 53mm

US\$2,000 - 3,000

From a small production run of 70 watches (40101 – 40170) completed in November 1860.



20



21



19

19

**WALTHAM. A RARE 14K GOLD OPEN FACE CHRONOGRAPH WITH REGISTER**

A. W. Co., No. 3038560

13-jewel M1884 14-size gilt shaped  $\frac{3}{4}$  plate movement with chronograph work planted on the back plate, activated by crown, jewels in gold settings, lever set, bimetallic balance with blued flat spring, plain regulator, gold cuvette, signed restored white enamel dial with fifth seconds ring enclosing roman chapters, continuous seconds at 6 o'clock, 15 minute register at noon, blued hands, engine turned A. W. Co. case

50mm, 110.3 grams

US\$1,000 - 1,500

20

**WALTHAM. A VERY FINE 14K ENGRAVED GOLD BOX HINGE HUNTER CASED WATCH WITH SPECIALLY FINISHED MOVEMENT AND DECORATIVE DIAL**

Am'n. Watch Co., No. 1763030

21-jewel M1872 16-size elaborately damascened nickel  $\frac{3}{4}$  plate adjusted movement, jewels in gold settings secured by gilt screws throughout, lever set, gold capped winding gears, gold train and escape wheel, counterpoised escapement, bimetallic balance, overcoiled blued spring, gold dome to balance cock, tadpole regulator, gold cuvette, white enamel dial with gilt minute ring, arabic chapters on gilt reserves enclosing floral garland, blued hands, scroll engraved A. W. Co. case enhanced with scenic vignette

52mm, 123.3 grams

US\$4,000 - 6,000

21

**WALTHAM. A FINE 14K GOLD HUNTER CASED WATCH**

American Watch Co., No. 6500749

19-jewel divided  $\frac{3}{4}$  plate 16-size M1888 movement, jewels in gold settings, gold train, gold cuvette, white enamel dial, arabic chapters, subsidiary seconds, blued hands, engine turned case

54mm 144.3g

US\$1,800 - 2,200





22

**22  
WALTHAM. A FINE 18K GOLD WATCH FOR THE ENGLISH MARKET**

21-jewel damascened M1872 16-size movement, jewels in gold settings, tadpole regulator, gold cuvette, white enamel dial with retailer's signature, roman chapters, subsidiary seconds, blued half hunter hands, engine turned open face case  
50.5mm 116.5g

US\$3,000 - 5,000



23

**23  
WALTHAM. A GOLD HUNTER CASED WATCH WITH CIVIL WAR INSCRIPTION AND A SILVER OPEN FACE WATCH**

Appleton, Tracy & Co., Nos. 100822 and 125174  
Two watches, each with 15-jewel M1860 20-size gilt ¾ plate movement with bimetallic balance, key wound and set; the gold watch inscribed and dated 1865, the silver watch with Stratton's patent barrel and Maltese cross stop work; both white enamel dials signed American Watch Co. with roman chapters, subsidiary seconds, blued hands (one minute hand replaced); the gold case engine turned with split button in the pendant, the silver also engine turned and engraved with vacant cartouche  
56 and 57mm, the gold case 137.4g

US\$2,500 - 3,500

The cuvette of the gold case reads "Presented to Capt. John Eddy from his friends of the QM Dept. April 1865. Camp Butler near Springfield, Ill."



24

**24  
WALTHAM. AN 18K GOLD HUNTER CASED WATCH**

Amn. Watch Co., No. 380090  
15-jewel gilt 16-size M1860 movement, Fogg's safety pinion, key wound and set from back, bimetallic balance, gold cuvette, white enamel dial, roman chapters, subsidiary seconds, blued hands, plain formerly engine turned case  
52mm 115.7g

US\$1,200 - 1,800



27



26



25

**WALTHAM. A FINE 18K GOLD HUNTER CASED WATCH**

American Watch Co., no. 1448915

21-jewel damascened nickel M1872 16-size movement with gold dome, gold cuvette, white enamel dial, roman chapters, subsidiary seconds, blued hands, A. W. Co. case with elaborate monogram  
52mm 132.6g

US\$4,000 - 6,000

26

**WALTHAM. A FINE 18K GOLD HUNTER CASED WATCH**

American Watch Co., No 125462

19-jewel gilt ¼ plate M1860 16-size movement with Stratton's barrel and Maltese cross stop work, key wound and set, gold cuvette, white enamel dial, roman chapters, subsidiary seconds, blued hands, engine turned R&A case  
51mm 109.3g

US\$2,500 - 3,500

25



27

**WALTHAM. A FINE 14K GOLD OPEN FACE WATCH**

American Watch Co., No. 6500267

19-jewel divided ¼ plate 16-size M1888 movement, jewels in gold settings, gold train, inscribed gold cuvette, white enamel dial, arabic chapters, subsidiary seconds, blued hands, case with elaborate script monogram  
51mm 118.2g

US\$1,200 - 1,800







28

28  
**WALTHAM. A FINE 18K GOLD OPEN FACE WATCH**

American Watch Co., No 190349  
 19-jewel gilt ¾ plate M1860 16-size movement with Stratton's barrel and Maltese cross stop work, key wound and set, gold cuvette, white enamel dial, roman chapters, subsidiary seconds, blued hands, formerly engine turned S&L case  
 49.5mm 101.1g

US\$2,500 - 3,500



29

29  
**WALTHAM. A FINE 14K MULTI COLORED GOLD HUNTER CASED WATCH**

Am'n Watch Co., no. 1833521  
 16-jewel M1872 16-size damascened nickel ¾ plate movement, lever set, jewels in gold settings, tadpole regulator, inscribed gold cuvette, white enamel dial with arabic chapters, subsidiary seconds, blued hands, monogrammed A.W.Co. gold case with applied multi color flowers, further enhanced with a photograph of an infant printed on the interior of the lid  
 53mm 133.4 grams

US\$2,500 - 3,500



30

30  
**WALTHAM. A RARE 18K GOLD HUNTER CASED WATCH**

Signed for Ball, Black & Co., New York, no. 600124  
 16-jewel M1872 16-size gilt ¾ plate movement, nail set, jewels in settings, index regulator, inscribed gold cuvette, white enamel dial signed American Watch Co., roman chapters, subsidiary seconds, blued hands, formerly engine turned Ball, Black & Co. case  
 53mm 134.9 grams

US\$2,500 - 3,500

From the initial production run of the Model 72. The watch employs nail hand setting.



33



32

31

**WALTHAM. AN UNUSUAL 18K GOLD HUNTER CASED WATCH**

Signed for Robbins, Clark & Biddle, Philadelphia, no. 871263  
15-jewel M1872 16-size damascened nickel  $\frac{3}{4}$  plate movement, lever set, index regulator, gold cuvette, white enamel dial with three line American Watch Co. signature, roman chapters, subsidiary seconds blued hands, engine turned A. W. Co. case  
52.5mm 133.7 grams

US\$2,500 - 3,500

From a production run of only 11 watches in November 1875 and though to be the only one with nickel plates.



31

32

**WALTHAM. A FINE 18K GOLD HUNTER CASED WATCH**

Am'n Watch Co., no 871019  
16-jewel M1872 16-size damascened nickel  $\frac{3}{4}$  plate movement, lever set, jewels in gold settings, tadpole regulator, gold cuvette, white enamel dial with three line American Watch Co. signature, roman chapters, subsidiary seconds, blued hands, monogrammed A. W. Co. case with reeded edge  
52mm 130.0 grams

US\$3,000 - 5,000

33

**WALTHAM. TWO FINE 14K GOLD OPEN FACE PRECISION DRESS WATCHES**

Both M1899 16-size, comprising No. 10587768, a stem set 23-jewel *Riverside Maximus*; and No. 9503816, a stem set 21-jewel bridge model *American Watch Co.* both with double sunk arabic chapter white enamel dial, blued hands; the first in a plain case, the second with elaborate script monogram  
51 and 51mm 105.5 and 101.9g

US\$1,200 - 1,800





34

34

**THREE BALL RAILWAY TRADE UNION WATCHES**

American Waltham Watch Co., No. B233013, 19-jewel *Brotherhood of Railroad Trainmen Official Standard*; No. B0542252, 19-jewel *Brotherhood of Locomotive Firemen Official Standard*; No. B219378, 17-jewel *Brotherhood of Locomotive Engineers Official Standard*; all 16-size, with signed movements and dials, the first two in Ball model metal Keystone cases, the last in an Illinois case 52mm

US\$2,500 - 3,500

See illustration of the third; images of the remaining watches in the on line catalog.

35

**WALTHAM. A RARE 18K GOLD HUNTER CASED WATCH WITH REVERSIBLE CENTER PINION AND ANOTHER WATCH SILVER CASED**

Appleton, Tracy & Co., No. 28712 and 28769

Two watches, each with 17-jewel M1859 18-size gilt 3/4 plate movement with Fitt's patent safety pinion, key wound and set, jewels in settings, counterpoised long lever, bimetallic balance, flat blued spring, plain index regulator, cuvette, white enamel dial signed American Watch Co., roman chapters, subsidiary seconds, blued hands, the gold R&A case engine turned, the silver case with band of scroll engraving across the lids

53 and 54 mm, the gold case 122.1 g

US\$1,800 - 2,200

From the first production run completed in July and August 1860 with "5 pairs jeweled."



35



36

**WALTHAM. A FINE AND RARE 18K GOLD HUNTER CASED WATCH INCORPORATING NASHUA WATCH CO. MATERIAL AND WITH JEWELLED HAIRSPRING STUD**

American Watch Co., No. 50246, Nashua Movement No. 1229  
20-jewel M1862 20-size gilt  $\frac{3}{4}$  plate movement, later converted to Abbott's stem winding and lever setting, jewels in settings, Stratton's patent mainspring barrel with visible stop work, counterpoised escapement, bimetallic balance, overcoiled blued spring and Fogg's patent jeweled hairspring stud, gold cuvette, signed white enamel dial, roman chapters, blued hands, subsidiary seconds, formerly engine turned, slightly later, A. W. Co. case  
55mm, 138.9 grams

US\$6,000 - 8,000





37

**A VERY RARE OPEN FACE “CHRONOMETER-LEVER ESCAPEMENT” WATCH MOVEMENT**

Signed “Mozart Watch Co., Ann Arbor, Mich., No. 7, Don J. Mozart Patent Dec. 24, 1868”

Gilt modified full plate movement recessed uncut bimetallic balance with trapezoidal weights, flat blued spring, 30 tooth escape wheel given impulse by balance staff, locked by eccentric detent, three wheel train, key wound and set from back, blued barrel click planted on back plate, cuvette, associated white enamel dial, roman chapters, subsidiary 12-second dial, in a later engine turned and engraved Ladd case

55mm, 119.8 grams

US\$5,000 - 7,000

It is thought that less than 200 watches were produced, but only a few were finished.

Mozart claimed “Among the many advantages secured by my escapement...[are]...the self banking trip lever...one wheel one pinion, three jewels...as well as many screws, are dispensed with, thus greatly reducing the expense of manufacture...[and]...that with two-thirds... less power...the movement may be run.”



38

38

**EZRA F. BOWMAN, LANCASTER PA. A FINE AND RARE 14K GOLD HUNTER CASED WATCH**

No. 24

21-jewel 16-size damascened nickel shaped  $\frac{3}{4}$  plate movement, jewels in settings, gold capped lever/escape wheel bridge, right angle lever escapement with pointed tooth escape wheel, free sprung bimetallic balance, stem wound, lever set, gold cuvette, signed white enamel dial, arabic chapters, subsidiary seconds, blued hands, chased and engraved Fahy case  
52mm, 116.8 grams

US\$5,000 - 7,000

39

**EZRA F. BOWMAN, LANCASTER PA. A FINE AND RARE 14K GOLD HUNTER CASED WATCH**

No.36

21-jewel 16-size damascened nickel shaped  $\frac{3}{4}$  plate movement, jewels in settings, gold capped lever / escape wheel bridge, right angle lever escapement with pointed tooth escape wheel, free sprung bimetallic balance, overcoiled spring, stem wound, lever set, gold cuvette, double sunk signed white enamel dial, arabic chapters, subsidiary seconds, blued hands, elaborately monogrammed case and a gold filled chain  
52mm

US\$3,000 - 5,000



39



40  
**OTAY WATCH CO., OTAY CALIFORNIA. A RARE  
GOLD FILLED BOX HINGE HUNTER CASED WATCH**

No. 250 signed P. H. Wheeler

15-jewel 18-size damascened and gilt full plate adjusted movement, jewels in settings, bimetallic balance, flat spring, micrometer regulator with transverse screw adjustment, stem wind, lever set, signed white enamel dial with roman chapters, subsidiary seconds, blued hands, rolled gold case engraved with horse head within horse shoe and wreath

54mm

US\$2,000 - 3,000

41  
**OTAY WATCH CO., OTAY CALIFORNIA. A RARE  
GOLD FILLED HUNTER CASED WATCH**

No. 30539, signed Native Son

15-jewel 18-size damascened and gilt full plate adjusted movement, jewels in settings, bimetallic balance, flat spring, micrometer regulator with transverse screw adjustment, stem wind, lever set, cuvette, signed white enamel dial with arabic chapters, subsidiary seconds, blued hands, engine turned rolled gold case engraved with vacant cartouche

54mm

US\$2,000 - 3,000

42  
**OTAY WATCH CO., OTAY CALIFORNIA. A RARE  
GOLD FILLED BOX HINGE HUNTER CASED WATCH**

No. 1518, signed F. A. Kimball

15-jewel 18-size damascened full plate movement, bimetallic balance, flat spring, micrometer regulator with transverse screw adjustment, stem wind, lever set, cuvette, signed white enamel dial with arabic chapters, subsidiary seconds, blued hands, rolled gold case engraved with scrolls and scenic vignette

55mm

US\$2,000 - 3,000





43

**PROPERTY OF VARIOUS OWNERS**

43

**A FINE 14K MULTI COLORED GOLD DIAMOND-SET BOX HINGE HUNTER CASED WATCH AND A CHAIN OF GOLD QUARTZ LINKS WITH GOLD NUGGET FOB**

The case by Keller & Untermeyer, New York, the case and Swiss watch retailed by Mermod & Jaccard, St. Louis, circa 1890  
 Nickel half plate adjusted keyless lever movement, bimetallic balance with overcoiled spring and snail cam regulator, lever set, gold cuvette, signed white enamel dial, roman chapters, subsidiary seconds, blued hands, the case with applied swags, foliage and monogrammed cartouche; the chain composed of four oblong gold links each set with two panels of gold quartz, completed by an elongated gold nugget  
*Diam. of case 50mm; gross weight of watch 129.7g; weight of nugget 27.5g including bail*

US\$6,000 - 7,000

**PROPERTY OF A COLLECTOR**

44

**NEW YORK WATCH CO., SPRINGFIELD MASS. A FINE 18K GOLD HUNTER CASED WATCH**

John L. King, no. 5622  
 17-jewel gilt ¾ plate 18-size movement, key wound and set, jewels in settings, bimetallic balance flat spring, gold cuvette, signed white enamel dial, roman chapters, subsidiary seconds, blued hands, engine turned N. Y. W. Co. case  
*54mm 128.7 grams*

US\$1,000 - 1,500



44





45



46

## PROPERTY OF VARIOUS OWNERS

45

### **CHARLES FASOLDT, ALBANY, NY. A RARE SILVER HUNTER CASED WATCH**

No. 365, Signed on the third wheel bridge "Pat. Feb.1.1859, Apr.5.1864 & March 7, 1865"

20-size nickel bar pattern movement jeweled to the third wheel, key wound, barrel bridge with gold cap, key set, bimetallic balance with gold poising and timing screws, blued spring with overcoil, proprietary polished gold micrometer regulator, Fasoldt's double wheel modified lever escapement with jeweled pallets, white enamel dial signed "C. Fasoldt Patent / Chronometer / Albany N.Y.", minute ring enclosing roman chapters, blued breguet hands, sunk subsidiary seconds, associated plain silver case  
60mm

**US\$4,000 - 6,000**

46

### **CHARLES FASOLDT, ALBANY, NY. A VERY RARE SILVER OPENFACE WATCH WITH MONOMETALLIC BALANCE AND COMPENSATION CURB**

No. 104, signed on the escape wheel bridge "C. Fasoldt's / patent." and on the third wheel bridge "Feb.1.1859 / Apr.5.1865 No.104."

10-size partly rebuilt gilt bar pattern movement jeweled to the third wheel, key wound barrel with polished steel click and spring, key set, monometallic balance with gold poising and timing screws, blued spring with overcoil, proprietary polished gold micrometer regulator conforming to the shape of the balance cock, a bimetallic strip along the length of the regulator engaging the overcoil, Fasoldt's double wheel modified lever escapement with jeweled pallets, white enamel dial signed "C. Fasoldt / Albany N.Y." minute ring enclosing roman chapters, blued fleur-de-lis hands, sunk subsidiary seconds, plain silver purpose made modern case  
45mm

**US\$3,000 - 5,000**

The watch was finished from an incomplete movement and provided with a custom made case. The compensation curb appears to be part of the original design.



47



## PROPERTY OF A COLLECTOR

47

### **ALBERT H. POTTER, GENEVA. A FINE 18K ROSE GOLD OPEN FACE LEVER WATCH WITH DATE**

Unsigned, retailed by Fritz Piguet & Bachmann, Genève, Case No. 12149

20-jewel nickel divided  $\frac{3}{4}$  plate movement with Potter's signature "AP" bridges, jewels in gold settings, straight line escapement with hook shaped counterpoise, bimetallic balance, blued overcoiled spring, articulated regulator with index on barrel bridge, stem wound and set, gold cuvette engraved with description of the watch, white enamel dial with minute ring enclosing arabic chapters, subsidiary seconds at 3 o'clock, date ring at 9 o'clock, blued breguet hands, retailer's monogrammed case

*51mm 101.8 grams*

**US\$3,000 - 5,000**

## PROPERTY OF VARIOUS OWNERS

48

### **A. HUGUENIN & SONS, LOCLE. A 14K ROSE GOLD HUNTER CASED QUARTER REPEATING CHRONOGRAPH**

No. 30498, last quarter 19th century

Nickel keyless lever movement, lever set, counterpoised escapement, bimetallic balance with overcoiled spring, chronograph work planted on train and barrel bridges, engaged by button on case band, repeating on gongs by means of slide on case band, glazed dust cap, signed gold cuvette, signed white enamel dial with fifth seconds ring enclosing roman chapters, subsidiary seconds, gold fleur-de-lis hands, engine turned case.

*55.5mm*

**US\$3,500 - 4,000**

49

### **AMI LECOULTRE, BRASSUS & GENEVA. A FINE 18K GOLD OPEN FACE SPLIT CHRONOGRAPH WITH JUMP QUARTER SECONDS AND REGISTER**

No. 3577, signed with patent dates, Jan'y 4, '87 and Sep 2, '88, last quarter 19th century

Nickel keyless lever movement jeweled through the center, counterpoised escapement, bimetallic balance, overcoiled spring, snail cam micrometer regulator, chronograph work planted on the back plate, activated by crown and button on case band, gold cuvette, white enamel dial with fifth seconds ring, arabic chapters, subsidiary 30-minute register and quarter seconds dial, blued hands, plain gold case

*53mm*

**US\$5,000 - 6,000**

Charles Ami Lecoultré (1843-1921) was a virtuoso artisan watchmaker. From 1881, he was associated with Louis Elisée and Henry Daniel Piguet specializing in ultra complicated watches.

His 1887 patent was for diaboline wheel work; the 1888 patent for the snail cam micrometer regulator.



48



49



50

**PATEK PHILIPPE. AN 18K ROSE GOLD OPEN FACE KEYLESS LEVER WATCH**

Case No. 225870, Movement no. 114090, circa 1900  
15-jewel gilt movement, escapement with moustache counterpoise, bimetallic balance, flat spring, regulator with index on train bridge, wolf's tooth winding gears, pin set, gold cuvette, white enamel dial with minute ring enclosing roman chapters, subsidiary seconds, gold hands, plain case, case, dial and movement signed  
49mm

US\$1,000 - 1,500

50



51

**JULES JURGENSEN, COPENHAGEN. A FINE 18K ROSE GOLD OPENFACE KEYLESS LEVER WATCH WITH BOX AND CERTIFICATE**

No. 14402, the certificate dated December, 1881  
Nickel bridge pattern movement jeweled through the center with gold chatons, long lever escapement, bimetallic balance, overcoiled spring, gold Vernier regulator, bow setting, glazed cuvette, white enamel dial, roman chapters, blued Breguet hands, subsidiary second, plain case, original wood display box and guarantee certificate, case, dial and movement signed  
50mm

US\$3,000 - 4,000

51



52

**A. LANGE, DRESDEN. A FINE 18K GOLD OPEN FACE KEYLESS LEVER WATCH**

No. 8828, retailed by Charles William Schumann, New York, sold 1873  
Gilt 3/4 plate 1a quality movement, jeweled through the center with gold chatons, gold anchor and escape wheel, diamond end stone, bimetallic balance, overcoiled spring, plain regulator, lever set, gold cuvette, signed white enamel dial, roman chapters, subsidiary seconds, blued hands, plain engine turned Schumann case, numbered 8828  
52mm

US\$3,000 - 4,000

52



Accompanied by a Certificate from the Deutsches Uhrenmuseum, Glashütte confirming the manufacture and sale of the watch, May 24, 1873 and with a photocopy of the relevant page from the A. Lange factory ledger.



53



54

53

**TIFFANY & CO. A FINE 18K GOLD HUNTER CASED KEYLESS LEVER WATCH**

No. 75972, late 19th century

Nickel bridge pattern movement jeweled through the center, bi metallic balance, overcoiled spring, wolf's tooth winding gears, pendant set, gold cuvette, white enamel dial with arabic chapters, subsidiary seconds, blued hands, engine turned case with small monogram, case, dial and movement signed

52mm

**US\$2,000 - 3,000**

54

**VOLTA. A FINE CHASED 18K GOLD HUNTER CASED MINUTE REPEATING WATCH SET WITH A DIAMOND**

Case no. 33129, circa 1900

Nickel keyless lever movement jeweled through the hammers, lever set, bimetallic balance, overcoiled spring, repeating on gongs by means of slide on band, gold cuvette, engine turned silver dial with arabic chapters, subsidiary seconds, blued hands, monogrammed case chased with leafy scrolls on both lids, the front set with a circular cut diamond

52mm

**US\$4,000 - 5,000**

Ditischheim & Cie., La Chaux de Fonds, registered the trademark Volta in 1896.





55

55

**GOLAY FILS & STAHL, GENEVA. A FINE 18K GOLD HUNTER  
CASED MINUTE REPEATING SPLIT SECOND CHRONOGRAPH  
WITH REGISTER**

No. 24644, last quarter 19th century

Nickel keyless lever movement jeweled through the hammers, counterpoised straight line escapement, bi metallic balance, overcoiled spring, repeating on gongs, chronograph work and split mechanism planted on bridges, pin set, signed gold cuvette, white enamel dial with fifth seconds ring enclosing arabic chapters, subsidiary dials for continuous seconds and 30-minute register, blued steel hands, monogrammed engine turned case, case, dial and movement signed

50mm

US\$12,000 - 18,000



56

56

**CHARLES OUDIN, ÉLÈVE DE BREGUET. A FINE AND RARE 18K GOLD OPEN FACE QUARTER REPEATING WATCH WITH REGULATOR DIAL AND CALENDAR**

No. 4340, first quarter 19th century

Gilt movement with single intricately shaped bridge for train and repeating work, cylinder escapement, gold three arm balance with "parachute" suspension and bimetallic compensation curb, free standing barrel with polished steel stop work, repeating on two gongs by depressing pendant, gold cuvette with labeled winding apertures, engine turned silver dial with minute ring enclosing subsidiary dials for hours, day and date, blued Breguet hands, engine turned case 51mm

US\$8,000 - 10,000

Not surprisingly, the movement of the present watch employs the same basic design used by A.-L. Breguet in a number of his quarter repeating ruby cylinder watches. These watches are characterized by a free standing barrel, escapement with parachute and compensation as well as a shaped bridge supporting both a portion of the going train and repeating mainspring. For illustrations of examples, see George Daniels, *Breguet*, for watches nos. 2129, 2176, 2323, 3236 among others.



## PROPERTY OF A NEW ENGLAND COLLECTOR

### 57 DESBOIS & WHEELER, LONDON. A FINE 18K GOLD PAIR CASE DUPLEX WATCH WITH COMPENSATION CURB

No. 2190, case hallmarked London, 1812  
Gilt full plate fusee movement, engraved cock with diamond endstone, gilt three arm balance, compensation curb fixed to index regulator with locking screw, white enamel dial, roman chapters, gold spade hands, plain inner case, the outer case engraved with coat of arms and motto and containing a Daniel Desbois watch paper  
56mm

US\$4,500 - 6,000



### 58 AN UNUSUAL ENGLISH 18K GOLD PAIR CASE PATENT LEVER WATCH WITH CHRONOMETER BALANCE

The case hallmarked Chester, 1818  
Gilt full plate key wound fusee movement jeweled with chatons, right angle escapement, bimetallic balance with timing screws and trapezoidal weights, flat blued spring, regulator with index on back plate, signed "patent" on the balance cock foot, gilt dust cap, gold dial, roman chapters, gold hands, subsidiary seconds, plain inner case, the bezels of the engine turned outer case chased with grape vines  
56.5mm

US\$1,200 - 1,800



## PROPERTY OF VARIOUS OWNERS

### 59 AN ENGRAVED 18K GOLD TWO-TRAIN INDEPENDENT SECONDS DUAL-TIME LEVER WATCH

Swiss, retailed by M. I. Tobias, Liverpool, second quarter 19th century  
25-jewel gilt bridge caliber two barrel key wound and set movement, counterpoised Continental right angle escapement, screwed monometallic balance, flat spring, Breguet-style parachute suspension and bimetallic compensation curb, center sweep hand beating seconds engaged by slide on case band, signed gold cuvette, white enamel dial with 60-second ring enclosing dual subsidiary roman chapter rings and continuous seconds, blued hands, gold case elaborately engraved with scrolls, foliage and pavilion with exotic maiden.  
52.5mm

US\$1,200 - 1,800





60

**AN 18K ROSE GOLD OPEN FACE QUARTER REPEATING MUSICAL WATCH SWISS, CIRCA 1810, MAKER'S MARK "AM" IN A RECTANGLE, NO. 105**

Gilt movement with standing barrels for going and music, cylinder escapement with plain three arm balance, repeating on two gongs by pushing pendant, sur plateau musical movement playing a tune on the hour or at will by slide on case band, "musique / silent" lever, gilt cuvette, engine turned and engraved dial with white enamel minute ring enclosing arabic chapters on white enamel reserves, engine turned case, numbered on case and movement, incuse case maker's punch, GGC in lozenge  
54mm

US\$4,000 - 6,000

**PROPERTY OF A NEW ENGLAND COLLECTOR**

**61 ROBERT NEWMAN, LONDON. A GILT METAL HOUR STRIKING VERGE CLOCKWATCH**

No. 7, second quarter 18th century  
Gilt full plate fusee movement with Egyptian pillars, pierced cock chased with scrolls and shell, scroll engraved barrel to striking train, striking on bell, signed gilt dust cap, gilt roman and arabic dial with signature in the scrollwork center, blued beetle and poker hands, plain consular case with shuttered winding apertures, the pierced band chased with running scroll and paterae  
57mm

US\$3,500 - 5,000



61

**62 DANIEL QUARE, LONDON. A SILVER PAIR CASE VERGE ALARM WATCH**

No. 272, first quarter 18th century  
Gilt full plate fusee movement with tulip pillars, pierced cock engraved with leafy scrolls, alarm train with pierced barrel similarly engraved with scrolls, striking on bell within the case, silver roman chapter dial with lozenge half hour marks, central arabic alarm setting disc, blued single hand and alarm indicator, the pierced band of the inner case engraved with birds amid leafy scrolls, loose ring pendant, plain outer case  
59mm

US\$8,000 - 10,000





62



63

63  
**JOHN ELLICOTT, LONDON. A GILT PAIR CASE  
 QUARTER REPEATING VERGE WATCH**

No. 2659, mid-18th century  
 Gilt full plate fusee movement with tapered cylindrical pillars, scroll pierced cock with chased solid foot, diamond endstone, repeating on bell by depressing pendant, signed gilt dust cap, white enamel roman and arabic dial, blued beetle and poker hands, associated and adapted inner case, plain outer case  
 50mm

US\$3,500 - 5,000



64

64  
**DANIEL & THOMAS GRIGNON, LONDON.  
 A REPOUSSÉ GOLD PAIR CASE QUARTER  
 REPEATING VERGE WATCH**

No. 1154, second quarter 18th century  
 Gilt full plate fusee movement with cylindrical pillars, pierced cock with diamond endstone, silver dust cap, repeating on bell by depressing pendant, later white enamel dial and gold hands, inner case pierced with foliate scrolls and grotesque mask, outer case repoussé and chased with a scene of a musicale  
 48.5 mm

US\$2,500 - 4,000



65

65  
**LEROY ET FILS, PARIS. A SILVER AND GOLD  
 QUARTER REPEATING VERGE WATCH**

No. 11024, first quarter 19th century  
 Gilt full plate fusee movement with pierced bridge and coqueret, repeating on gongs by depressing pendant, lock on band, gilt dust cover, white enamel dial with arabic chapters, gold Breguet hands, engine turned silver case with gold bezels and bow  
 56mm

US\$1,000 - 1,200



66



67

## ANOTHER PROPERTY

66

### A GOLD OPEN FACE QUARTER REPEATING VERGE WATCH

Continental, late 18th century

Gilt full plate fusee movement with scroll pierced bridge and coqueret, repeating on bell by depressing pendant, hinged dust cap, white enamel dial, arabic chapters, gold hands, plain case with pierced band.

52mm

US\$1,800 - 2,000

## PROPERTY OF A NEW ENGLAND COLLECTOR

67

### ROMILLY À PARIS. A FINE ENAMELED GOLD VERGE WATCH

No. 1029, last quarter 18th century

Gilt full plate fusee movement with adjustable potence, pierced bridge with coqueret, white enamel dial with arabic and roman chapters, gold pierced arrow hands, the case with bands of enameled foliage enclosing a classical vignette

41mm

US\$2,500 - 3,500

68

### GREGSON À PARIS. A FINE ENAMELED GOLD AND PEARL VERGE WATCH WITH MATCHING KEY

No. 1927, case with charge and discharge of Henri Clavel (1782-1789), Paris date mark for 1786, case maker's mark, L-F L, roue dentée, fleur de lis couronnée

Gilt full plate fusee movement with adjustable potence, pierced bridge with coqueret, white enamel dial with arabic chapters, gold spade hands, the bezels of the case set with seed pearls enclosing an enamel panel with varicolored paillons imitating peacock feathers, the octagonal gold key with similar enamel, accompanied by a fitted display box

41mm

US\$4,000 - 6,000

By the device of a pinion on his punch, this anonymous goldsmith is identified as a specialist watch case maker. His mark appears on several cases from the Olivier Collection in the Louvre including one, also of 1786, with an identical enamel for a repeating watch signed Louis-François Lefebvre.

The movement was made by Pierre Gregson, an Englishman working in Paris 1778 - 1790.





68



69

69  
**TWO GOOD SWISS VERGE WATCHES SET WITH BRILLIANTS AND PORTRAIT MINIATURES**

Geneva, late 18th century  
 Both with gilt full plate fusee movements with adjustable potence, pierced bridge and coqueret, signed white enamel arabic and roman numeral dials, scroll hands set with brilliants, the first signed Jn Bouvier, no. 9296 in a varicolored gold case with applied drapery swags, the second signed Vaucher no. 7411 in a gilt metal case and glazed outer case  
 Each 40mm

US\$2,500 - 3,500



70

70  
**PASCAL HUBERT À ROUEN. A GILT OIGNON VERGE WATCH**

Late 17th / early 18th century  
 Gilt full plate fusee movement with Egyptian pillars, wound through the center, pierced balance bridge chased with mask amid scrolls and birds, rack and pinion regulator, chased gilt dial with minute ring within roman chapters on white enamel cartouche reserves, gilt fleur de lis hand, plain case with loose ring pendant  
 56mm

US\$3,000 - 5,000



71

71  
**JLN. LEROY À PARIS. A FINE ENAMELED GOLD PEARL-SET QUARTER REPEATING VERGE WATCH FOR THE TURKISH MARKET**

No. 20590, late 18th century  
 Gilt full plate fusee movement with pierced bridge and coqueret, repeating on a bell in the case by depressing pendant, signed dial with white enamel Turkish chapter ring enclosing chased enameled flowers in the matted center, scroll hands, bezels of the case set with seed pearls, enclosing a green guilloche back panel engraved with an urn, with shagreen outer protective case  
 53mm

US\$3,500 - 5,000





72



## ANOTHER PROPERTY

72

### JOHN ELLICOTT, LONDON. A FINE REPOUSSE GOLD QUARTER REPEATING VERGE WATCH SET WITH DIAMONDS AND A LATER 18K GOLD CHAIN

No. 541, mid-18th century

Gilt full plate fusee movement, tapered knopped pillars, pierced cock with diamond end stone, chased silver backplate furniture, repeating *à toc* with two hammers on blocks within the case by depressing pendant capped with five diamonds, signed silver dust cap, white enamel dial with roman chapters and arabic minute numerals, pierced scroll hands set with brilliants, the consular case repousse and chased with flowering vines concealing a winding aperture, accompanied by a 19th century curb link chain with fob concealing a key  
47mm

US\$8,500 - 9,500

#### Provenance

The Time Museum, Sotheby's 19 June 2002, lot 34.

## PROPERTY OF THE ESTATE OF FAITH DOMERGUE

73

### A FINE VARI COLORED GOLD AND TURQUOISE VERGE WATCH WITH CHAIN AND KEY

Swiss, first quarter 19th century

Gilt full plate movement with pierced bridge, coqueret, gold dial enhanced with vari colored foliage above polished arabic chapter ring enclosing guilloché center, gold hands, the case back with applied foliate trophy of music set with cabochon turquoise, the gold chain formed from cabochon turquoise links, accompanied by a repoussé gold key  
43.5mm

US\$2,000 - 3,000

## PROPERTY OF VARIOUS OWNERS

74

### AGASSIZ. A FINE 18K GOLD DIAMOND-SET FOB WATCH AND BROOCH

No. 118727, circa 1900

Nickel manual winding lever movement jeweled through the center, bimetallic balance with overcoiled spring, stem set, gold cuvette guilloche enameled with a red heart, white enamel dial with arabic chapters, subsidiary seconds, gold scroll hands, the openwork case and brooch cast in relief with leaves and scrolls and set with circular cut diamonds  
26mm

US\$1,000 - 1,500

75

### AN UNUSUAL GEM SET 14K GOLD CANE HANDLE WITH CONCEALED WATCH

Austrian, last quarter 19th century

The engine turned tapered handle with gilt Geneva bar pattern cylinder movement jeweled through the third wheel, plain gold three arm balance, white enamel roman chapter dial revealed by turning the bezel set with alternating rubies and diamonds, with horn tipped wood cane and a hinged leather protective cover with retailer's label, Arthur Mediansky, Karlsbad  
33mm diameter of bezel

US\$3,000 - 5,000



73



74



75



76



77



78



79



80



81





76

**VACHERON & CONSTANTIN. AN 18K GOLD LADY'S BRACELET WATCH**

Case no. 371865, Movement no. 532724, 1950's  
17-jewel Cal. 1005 back winding movement adjusted to temperature, position and isochronism, monometallic balance, flat spring, white dial with baton numerals and gold dot quarters, gold hands, set within a bracelet of rectangular engine turned links, case and movement signed, accompanied by four detached links  
*width of case 8mm, length of bracelet without detached links 5 3/4 in (14.6cm)*

US\$1,000 - 1,200

77

**AUDEMARS PIGUET. A FINE 18K WHITE GOLD COVERED BRACELET WRISTWATCH**

Case no. 5521, Movement no. 57439, 1950's  
18-jewel manual winding adjusted movement with gold train, screwed monometallic balance, square silvered dial with applied baton, dot and arabic numerals, blued hands, concealed within a hinged lid forming part of a bracelet of fluted hexagonal links, folding clasp, case, dial and movement signed  
*18mm 7 5/8 in (19.3cm) length of bracelet*

US\$3,000 - 5,000

78

**CRESSARROW. A PLATINUM AND DIAMOND LADY'S BRACELET WATCH**

The movement signed C. H. Meylan, no. 3517, 1920's  
17-jewel manual winding adjusted movement with bimetallic balance and overcoiled spring, rectangular silvered dial with arabic numerals, blued hands, the engraved case with bezel set with round diamonds, pierced articulated end pieces each set with marquise-cut diamond and further round diamonds, completed by a mesh band enhanced with circular buckles continuing to a clasp set with diamond monogram  
*13mm*

US\$2,000 - 3,000

79

**PATEK PHILIPPE. A FINE 18K GOLD LADY'S WRISTWATCH AND A 14K GOLD STRAP**

Ref:3182, Case no. 686433, Movement no. 855586, circa 1955  
18-jewel Cal. 8<sup>'''</sup>-85 manual winding adjusted movement, monometallic balance with flat spring, circular silvered dial with applied gold baton numerals, gold hands, conforming circular case with triangular single lugs, associated braided 14K gold strap, case, dial and movement signed  
*21mm*

US\$2,000 - 3,000

**PROPERTY OF A PRIVATE TEXAS COLLECTOR**

80

**FRANCK MULLER. AN 18K WHITE GOLD AND DIAMOND CURVEX WRISTWATCH**

Ref:1752 QZ BAG, no. 45  
Quartz movement, guilloché silvered dial with bold arabic chapters, blued hands, bezel set with a single row of baguette cut diamonds, cabochon crown, tonneau curved case with back secured by four screws, associated leather strap  
*25mm*

US\$3,000 - 4,000

**PROPERTY OF VARIOUS OWNERS**

81

**CARTIER. A FINE 18K GOLD LADY'S TANK WRISTWATCH WITH BOX AND CERTIFICATE**

No. 7808712684 / 60001, circa 1984  
17-jewel manual winding movement, rectangular white dial, roman numerals, blued hands, Tank-style case with back secured by four screws, cabochon crown, maker's leather strap with 18K gold buckle, accompanied by display box and outer packaging, wallet with guarantee card and instructions  
*20mm*

US\$1,500 - 2,500



82



83

82  
**ROLEX. A FINE STEEL AND GOLD LADY'S AUTOMATIC BRACELET WATCH WITH MOTHER OF PEARL DIAL AND DIAMOND NUMERALS AND WITH BOX, CERTIFICATE AND A WATCH WINDER**

Ref:79173,Case No. K327878, sold 2002  
 31-jewel Cal. 2235 self-winding movement, mother of pearl dial with round diamond numerals set in gold collets, date aperture, gold hands, brushed tonneau case with fluted gold bezel, gold and steel Jubilee bracelet with deployant clasp, case dial and movement signed, together with four detached links, display box, outer packaging, guarantee certificate, instruction manual, tags, polishing cloth and original bill of sale, accompanied by a single watch winder and charger 25mm

US\$2,000 - 2,500

83  
**ROLEX. AN 18K ROSE GOLD AUTOMATIC CENTER SECONDS BRACELET WATCH WITH DAY AND DATE**

Oyster Perpetual Day-Date, Ref:1803, Case no. 2804178, circa 1970  
 26-jewel Cal. 1556 self winding movement, gilt dial with applied baton numerals and luminous dots, aperture for day, in Spanish, and date, gold hands, tonneau screw back case with fluted bezel and screw down crown, 18K President bracelet with deployant clasp, case, dial and movement signed  
 34mm 7 1/2 (19cm) length of bracelet

US\$3,000 - 5,000



84



85



86

## PROPERTY OF VARIOUS OWNERS

84

### **PATEK PHILIPPE. AN 18K GOLD WRISTWATCH**

Movement no. 191675, circa 1918

18-jewel nickel manual winding adjusted movement, lever escapement with moustache counterpoise, bi metallic balance, overcoiled spring, circular gilt dial with luminous arabic chapters, blued hands with luminous fill, subsidiary seconds, contemporary snap back tonneau monogrammed case by American Watch Case Co., no. 225098, associated leather strap, signed by Patek Philippe on dial and movement

31mm

US\$2,000 - 3,000

86

### **PATEK PHILIPPE. A RARE 18K ROSE GOLD TOP HAT WRISTWATCH**

Ref: 2480, Case no. 662893, Movement no. 973252, 1950's 18-jewel Cal. 9''-90 manual winding movement, bimetallic balance, overcoiled spring, micrometer regulator, rectangular striated silver dial, applied gold arabic and baton numerals, subsidiary seconds, gold hands, polished and brushed shaped rectangular snap back case with domed crystal, maker's leather strap with 18K rose gold buckle, case, dial and movement signed

23.5mm

US\$5,000 - 6,000

## PROPERTY OF A NEW ENGLAND COLLECTOR

85

### **ROLEX. AN EARLY SILVER WRISTWATCH WITH ENAMEL DIAL**

Case no. 614638, London import mark for 1914

15-jewel spotted divided  $\frac{3}{4}$  plate manual winding movement, uncut bimetallic balance, flat spring, white enamel dial, black arabic numerals with red 12, blued steel hands, subsidiary seconds, circular W&D case with articulated lugs, hinged back engraved with name and dated 1915, leather strap, case, dial and movement signed

34.5mm

US\$1,000 - 1,500





87

87

**PATEK PHILIPPE. A FINE 18K GOLD AUTOMATIC WRISTWATCH WITH DATE**

Ref:3514, Case No. 214950, Movement no. 1122304, sold 1967  
37-jewel Cal. 27-460 self winding movement, silvered dial with applied gold baton numerals, subsidiary seconds, date aperture at 3 o'clock, gold hands, screw back case with convex bezel, associated leather strap with metal buckle, case, dial and movement signed  
33.5mm

**US\$7,000 - 9,000**

Accompanied by original Guarantee Certificate dated March 13, 1967.



88

88

**PATEK PHILIPPE. A FINE 18K GOLD WRISTWATCH WITH ORIGINAL BOX AND CERTIFICATE**

Ellipse, Ref:3648, Case no. 2723318, Movement no. 1215627, sold 1973  
18-jewel Cal. 23-300PM manual winding adjusted movement, Gyromax balance, Seal of Geneva, blued elliptical dial with applied gold baton numerals, gold hands, conforming monogrammed snap back case with convex polished bezel, leather strap, Patek Philippe 18K gold buckle, case, dial, and movement signed, accompanied by bracelet box with outer packaging, guarantee certificate, instruction manual, promotional literature  
27mm

**US\$3,000 - 5,000**



89



90



91

89

**HEUER. A RARE STAINLESS STEEL BLACK DIAL CHRONOGRAPH WRISTWATCH WITH DATE**

Carrera, Ref:3147, circa 1966

17-jewel manual winding Landeron Cal. 189 movement, signed black dial with polished faceted applied baton numerals and luminous dots, subsidiary dials for 45-minute register and continuous seconds, polished hands with luminous fill, white sweep hand, polished case with faceted lugs, screw down case back, leather strap, case and movement signed, Heuer-Leonidas, S.A.

35mm

**US\$3,000 - 5,000**

90

**CHOPARD. A FINE STAINLESS STEEL AUTOMATIC CHRONOGRAPH WRISTWATCH WITH DATE**

Mille Miglia 1998, Ref:16/8331, No. 679240, sold 1999

37-jewel Cal. 2394-2 self winding movement, black dial with tachymeter scale enclosing arabic numerals, subsidiary dials for 12-hour and 30-minute registers and continuous seconds, date aperture between 4 and 5 o'clock, polished hands with luminous fill, molded circular case with glazed back secured by eight screws, maker's leather strap and steel buckle, case, dial and movement signed, accompanied by display box and outer packaging, original bill of sale, guarantee certificate, instruction booklet and additional Chopard tire tread strap

38mm

**US\$1,500 - 2,500**

91

**OMEGA. A FINE STAINLESS STEEL TACHYMETER CHRONOGRAPH AND BRACELET**

Speedmaster Professional, Ref: 145022-69ST, Movement no. 29604281, circa 1970

17-jewel Cal. 861 manual winding movement, shock resistant suspension to monometallic balance, black stepped dial with fifth second ring enclosing luminous baton numerals, subsidiary dials for 30-minute and 12-hour registers and continuous seconds, white hour and minute hands with luminous fill, square end spear sweep hand, screw back tonneau case with "dot over 90" tachymeter scale bezel, case, dial and movement signed, Omega 1039 bracelet stamped 2/70

40mm

**US\$4,000 - 6,000**



92

**PATEK PHILIPPE. A FINE 18K WHITE GOLD AUTOMATIC  
WRISTWATCH WITH MOON PHASE AND POWER RESERVE**

Ref:5015, Case no. 4022015, Movement no. 3052158, circa 1995  
29-jewel Cal. 240/154 self winding movement, white dial with arabic numerals enclosing aperture for moon phase, subsidiary seconds, 48-hour winding indicator, *officier* style case with hobnail bezel, hinged back and inner glazed lid, maker's leather strap with white gold buckle, case, dial and movement signed, accompanied by setting pin, display box and outer packaging, wallet with literature and instruction manual  
35mm

US\$15,000 - 25,000



16



93

**BREGUET. AN 18K GOLD AUTOMATIC WRISTWATCH WITH PERPETUAL CALENDAR, MOON PHASE AND POWER RESERVE**

Ref:3310, Case no. 5137, Movement no. 2238, 1990's  
38-jewel self-winding movement with shock resistant suspension to monometallic balance, silver dial with roman numerals, guilloché center with subsidiary dials for day in French, date, month and leap year indication, sector with 45-hour winding indicator, aperture for age and aspect of the moon, blued hands, snap back case with reeded edge and sapphire crown, leather strap and 18K gold buckle  
*36mm*

US\$12,000 - 15,000

**BREGUET. A FINE 18K GOLD AUTOMATIC WRISTWATCH WITH DATE, MOON PHASE AND POWER RESERVE**

Ref: 3130, Case no. 4213F, Movement no. 6637, sold 1999  
39-jewel Cal. 502 self winding movement, guilloché silver dial with polished roman chapter ring enclosing aperture for age and aspect of the moon, 45-hour winding indicator and date ring at VI o'clock, reeded edge snap back case, maker's leather strap and gold buckle, case, dial and movement signed, accompanied by display box and outer packaging, setting pin, replacement leather strap, wallet with instructions and guarantee booklet  
36mm

US\$8,000 - 12,000



*Breguet*  
Depuis 1775

95

**PATEK PHILIPPE. A FINE 18K GOLD AUTOMATIC CENTER  
SECONDS BRACELET WATCH WITH ANNUAL CALENDAR,  
MOON PHASE AND POWER RESERVE**

Ref:5036/1J-001, Case no. 4052028, Movement no. 3143334, sold 1999  
37-jewel Cal. 315 S IRM QA LU, self winding movement, circular  
white dial with raised gilt roman numerals, subsidiary dials for day and  
month, apertures for date, moon phase and 36-hour winding indicator,  
tonneau case with glazed screw back, concave bezel, completed by  
a substantial basket weave bracelet with deployant clasp, case, dial,  
movement and bracelet signed, accompanied by display box and  
outer packaging, Certificate of Origin, wallet with instructions and an  
extra link  
36mm

US\$15,000 - 20,000





**PROPERTY FROM THE GLAZER COLLECTION,  
PHOENIX, AZ**

96

**A FINE GILT GRANDE SONNERIE CARRIAGE CLOCK WITH  
ALARM, THERMOMETER AND COMPASS**

With the trademark of Quinet & Richard, Paris, last quarter 19th century

With pierced and chased floral side panels and mask enclosing white enamel roman chapter ring with green guilloché panel in the center, similar alarm dial below, the top inset with glazed thermometer and compass with lock, two train movement with platform lever escapement, *grande / petite sonnerie* striking with selection switch in base

height 8 in (20cm) including handle

US\$3,000 - 3,500

**PROPERTY OF THE ESTATE OF FRANCES & TED  
DENTON, MONTECITO, CA**

97

**A LACQUERED BRASS FIVE-MINUTE REPEATING CARRIAGE  
CLOCK WITH ALARM**

François-Arsène Margaine, Paris, No. 6209, last quarter 19th century

The cannelée case with white enamel dial, roman chapter ring above subsidiary alarm dial, blued moon hands, two train movement with silvered right angle lever escapement and bimetallic balance, striking the hour and half hour and repeating on two gongs, signed with trademark, case and movement numbered

height 7 1/4 in (18.2cm) including handle

US\$2,000 - 2,500

98

**A FINE GILT STRIKING AND REPEATING CARRIAGE CLOCK  
WITH ALARM**

Signed Jules à Paris, circa 1840

The case elaborately cast and chased with scrolls and foliage and figures of a huntsman and lady to the angles, the gilt dial profusely engraved with foliate scrolls enclosing a matted roman chapter ring and subsidiary alarm dial, blued trefoil hands, twin barrel movement with gilt platform and bridge for the Jules-type lever escapement, rack striking the hours and half hour and repeating the hours on a bell planted on the back plate

height 7.5in (19cm) including handle

US\$1,500 - 2,500



96



97



98

## ANOTHER PROPERTY

99

### A VERY FINE ENAMEL paneled HOUR REPEATING CARRIAGE CLOCK WITH ALARM

Retailed by Schlesicky, Frankfurt, late 19th century

The engraved gorge case with white enamel, roman chapter dial above subsidiary alarm dial on a guilloche pale green enameled reserve enhanced with flowers enameled in relief, blued hands, the side panels similarly enameled, two train movement with silvered right angle lever escapement and cut bimetallic balance, striking the hour and half hour and repeating on a gong  
*6 1/8 in (15.5cm) high including handle*

US\$3,000 - 5,000

## PROPERTY FROM THE GLAZER COLLECTION, PHOENIX, AZ

100

### A FINE PORCELAIN paneled STRIKING AND REPEATING CARRIAGE CLOCK

With the trademark of Achille Brocot, Paris, No. 188, last quarter 19th century

The case with reeded handle, convex molded frame joined by plain columns, porcelain side panels and dial enameled with birds on flowering branches, roman chapters on white cartouche reserves, gilt hands, the movement with silvered platform for right angle lever escapement, uncut bimetallic balance, striking the hours and half hour and repeating the hour on coiled gong  
*height 7in (17cm) including handle*

US\$1,200 - 1,800



99

100

## PROPERTY OF VARIOUS OWNERS

101

### A FINELY ENAMELED SILVER AND HARDSTONE MINUTE REPEATING SHUTTERED BOUDOIR CLOCK

Swiss, first quarter 20th century

The case formed of blue enamel panels enhanced with flowering vines amid guilloché reserves on shaped hardstone base, the front panels opening to reveal gold arabic chapters in blue enamel ground enclosing a vignette of an exotic beauty, enamel filled hands, the movement with platform lever escapement repeating on gongs planted on the back plate by depressing a hardstone button that opens the front panels

3 ½ in (9cm) high

US\$20,000 - 25,000

102

### GENEVA CLOCK CO. A SMALL ENAMELED SILVER AND HARDSTONE BOUDOIR TIMEPIECE

Early 20th century

Jeweled key wound lever movement, circular guilloché silvered dial, arabic chapters, gold Breguet hands, the rectangular case with alternating black and white enamel stripes, on grey agate base, with fitted leather case

2 ½ in (6cm) high

US\$1,200 - 1,800

103

### A FINE BELLE ÉPOQUE ENAMELED SILVER MINUTE REPEATING BOUDOIR CLOCK

Retailed by Tiffany & Co., the movement by Mathey-Tissot, first quarter 20th century

The case formed of guilloché pink enamel panels on hardstone base, polished silver bezel enclosing oval dial with arabic chapters, enamel filled hands, 15-jewel movement with platform lever escapement, repeating on two gongs planted on the back plate by depressing cabochon moonstone above the case, accompanied by a fitted leather case

3 in (7.5cm) high

US\$10,000 - 12,000





104

**A FINE FRENCH ART DECO SMALL ENAMELED SILVER, NEPHRITE, LAPIS LAZULI AND HARDSTONE TIMEPIECE**

Signed Tiffany & Co., probably 1930's

The lever movement with rectangular dial, the enamel chapter ring inlaid with gilt arabic numerals enclosing a nephrite panel in the center, pierced gold hands, all within a rectangular enameled silver case supported by fluted nephrite square columns on stepped hardstone base, surmounted by a lapis lazuli ball finial on further graduated hardstone strips

4 ¼ in (10.8cm) high

US\$8,000 - 9,000

105

**A VERY FINE ART DECO CARVED ROCK CRYSTAL, ONYX AND DIAMOND ENAMELED SILVER GILT DESK CLOCK**

Swiss, retailed by E. M. Gattle, New York, circa 1925

The oval silver dial with arabic chapter ring enclosing enamel inlaid center engraved with vines, tapered hands set with rose-cut diamonds, the conforming case suspended between tapered rock crystal columns carved with vines and capped by carved bouquets, all on rectangular onyx base with fluted feet and raised on ebonized plinth, fitted with a 15-jewel adjusted movement with lever escapement

width 19cm (7in), depth 9.3cm (3.5in), height 17cm (6.5in)

US\$5,000 - 7,000

106

**CARTIER, FRANCE. AN UNUSUAL MIRRORED AND ENAMELED ART DECO LARGE DESK CLOCK**

No. 1073, 1930's

On rectangular enameled base inset with hinged rose tinted glass panel supporting the square case with fluted tinted mirror panels to the top and sides, the enclosed mirror dial with arabic chapters, enameled hands, the jeweled timepiece movement with lever escapement, signed on the base and dial

22cm 8 ¾ in high

US\$7,000 - 12,000

As indicated by the electrical contacts in the base, the hinged panel in the base conceals a bell push mechanism.



104

105

106



107

**A FINE LOUIS XVI ORMOLU STRIKING TABLE  
CLOCK DEPICTING THE THREE GRACES**

Signed Lepaute à Paris the case after a model by François Vion, last quarter 18th century

On molded circular base cast and chased with laurel wreath and grape vine supporting a fluted urn and column flanked by the garland draped figures of the Graces, the circular case, surmounted by an amor, with signed white enamel roman and arabic numeral dial, pierced gilt fleur-de-lis hands, signed circular movement, thread suspended pendulum (lacking) to anchor escapement, striking the hour and half hour on bell by means of a crossed out count wheel 19 1/2 in (49.5cm) high

US\$7,000 - 9,000

**Literature**

H. Ottomeyer, P.Pröschel ed., *Vergoldete Bronzen*, München, 1986, vol. I, p. 179, ill.3.7.4.

P. Verlet, *Les Bronzes Dorés Français du XVIIIe siècle*, 1987, p.261 (ill. 296), and p.279 (ill. 308-310).

**PROPERTY FROM THE GLAZER  
COLLECTION, PHOENIX, AZ**

108

**A FINE PORCELAIN PANELED GILT STRIKING  
TABLE CLOCK**

French, last quarter 19th century

The side panels and dial of the molded gilt case depicting courtiers in historical dress, arabic chapters on cartouche reserves enclosing an heraldic device in the center, blued fleur-de-lis hands, two barrel movement with Brocot escapement between square plates, rack striking the hours and half hour on a coiled gong  
*height 13 1/4in (33.5cm)*

**US\$1,000 - 2,000**





## PROPERTY OF AN AMERICAN COLLECTOR

109

### A VERY RARE AND EARLY FRENCH GILT BRASS AND IRON STRIKING HEXAGONAL SMALL TABLE CLOCK

Signed on the base "Beauvais" presumably for Anthoine Beauvais, Paris and dated 1548

Surmounted by an urn final and dome pierced and engraved with caryatids with scrolls, lunar masks and dolphins between and flanked by urns above an arcade; the side panels engraved with the ruling deities of the days of the week after engravings attributed to Georg Pencz, the molded base raised on six bun feet; Roman chapter ring enclosing an engraved armillary with signs of the Zodiac.

The iron movement constructed in two tiers with six baluster pillars each. The upper tier supporting the bell over a foliot pivoted in a gilt cock; with verge escapement, tall narrow fusee and gut, the single hand driven by a pinion linked to a contrate wheel at the base of the fusee. The lower tier containing a striking train with going barrel, released by a lever linked to a star wheel behind the dial, the gilt count wheel with four iron serpentine arms planted under the bottom plate; vertical hammer pivoted at the edge of the plates.

7in (17.8 cm) High

US\$30,000 - 50,000

Anthoine Beauvais was one of the founding members of the Paris guild of clockmakers chartered by François I in 1544.

The same deities are engraved on the sides of another hexagonal clock by Beauvais preserved in the Chateau d'Ecouen. Based on the research of Chapiro et al., the side panel engravings correspond to a series preserved in the British Museum that are signed on a panel at the feet of Mercury, "I B 1528". The initials are thought to be those of the Nuremberg artist "Jorg Bens", as transcribed based on the contemporary pronunciation of Georg Pencz. Pencz is first mentioned in texts in 1523 and died in 1550.

The figures on the present clock are engraved on a larger scale than the Ecouen clock. Thus the present clock's side panel of Mercury includes the same panel from the engraving but now reading "I B 1548" interpreted as the date of the clock.

#### Literature

Chapiro, Adolphe, Chantal, M.-P. and Turner, A. *Catalogue de l'horlogerie et des instruments de precision du debut du XVI au milieu du XVII siecle*. Musée national de la Renaissance, Chateau d'Ecouen, (1989)

#### Provenance

The Estate of Albert C. Neumann, Sotheby's New York, October 27, 1998.



(109 - verso)



(109 - detail)



110

**A FINE ORMOLU MOUNTED VERNIS MARTIN  
QUARTER STRIKING AND QUARTER REPEATING  
MUSICAL CLOCK ON BRACKET**

The case with the stamp of the ébéniste Jean Goyer, Paris, third quarter 18th century

The waisted case and its bracket painted with sprays of flowers on green ground and mounted with ormolu leafy scrolls, white enamel roman and arabic numeral dial, pierced gilt hands, the movement with rectangular plates, verge escapement, pendulum with thread suspension, count wheel for striking the quarters and releasing a rack for the hours with two vertical hammers on two nested bells above the case, pull quarter repeat with two further hammers, the separately wound musical movement with chain fusee and pinned cylinder playing a tune on the hour or at will on a nest of 13 bells with 21 hammers *54 in (137cm) high*

**US\$15,000 - 20,000**

The Parisian ébéniste Jean Goyer (b. 1731, maître, 1760), like his father, François (maître, 1740) and uncle, Jean specialized in the manufacture of lacquer clock cases. For twenty years after the death of his father in 1763, he occupied premises in the rue de Charenton.





111

**A FINE FRENCH BRASS INLAID EBONIZED  
LONG DURATION MANTEL REGULATOR WITH  
CONCEALED WINDING**

Mid-19th century, the case with the stamp of Farret & Cie.,  
Paris

Rectangular with molded pediment and plinth, the inlaid  
corner columns enclosing four glazed panels, white  
enamel dial with roman chapters, gilt hands, blued sweep  
seconds hand, the movement with substantial circular  
plates joined by four screwed pillars, large going barrel  
wound by a lever and ratchet pivoted on the front plate  
and concealed behind the dial, adjustable pinwheel  
escapement with jeweled pallets planted on the back  
plate, spring suspended bimetallic pendulum with  
spherical counterpoise weights for compensation  
*25 ¼ in (64cm) high*

US\$5,000 - 7,000

**Provenance**

The Joseph P. Meraux Collection, Sotheby's New York,  
June 28, 1993, lot 192.



(111 - verso)



112

**AN ORMOLU MOUNTED MAHOGANY PORTICO STRIKING  
MANTEL REGULATOR**

Dubois fils, Rue St. Honoré No. 22, Paris, first quarter 19th century  
The molded pediment supported by four tapered columns with ormolu capitals and bases on plain plinth, circular ormolu bezel enclosing white enamel dial with minute ring and roman chapters, blued hour, minute and sweep seconds hand, the movement with circular plates joined by cylindrical pillars, pin wheel escapement mounted on the back plate, gridiron pendulum suspended on a knife edge, beat adjustment on crutch, striking the hour and half hour on a bell by means of a count wheel  
*20 1/2 in (52cm) high*

US\$4,000 - 6,000



## ANOTHER PROPERTY

113

### AN ORMOLU MOUNTED BURL WOOD AND EBONY PORTICO MANTEL REGULATOR

Signed on the movement "L'Epine, Place Dauphine, Paris, No. 742",  
first quarter 19th century

The circular white enamel dial with roman chapters within gilt bezel  
secured to the front pillars, movement of two week duration with  
circular plates, pinwheel escapement planted on the back plate,  
transverse screw for beat adjustment in the crutch, substantial steel  
and brass gridiron pendulum suspended from an inverted knife edge  
mounted on the portico, striking the hours and half hours on a bell by  
means of a count wheel.

23 in (58.4 cm) high

US\$5,000 - 7,000

Jean-Antoine Lépine (1720-1814) occupied premises in the Place Dauphine during the 1770's, however, there are numerous watches from Lépine's workshop, cased c.1800, that contain movements of 25 years earlier. The explanation for this lies in the troubled history of the French craft guilds in the late 18th century. By 1795, the French Revolution had effectively disrupted manufacture and industry as it sought to abolish the craft guilds. Were that not enough, the general civil unrest followed by the wars of Napoleon took away most of the able bodied workmen, leaving their shops without their apprentices and junior artisans. It is not surprising that the understaffed and overworked clock making establishments chose to finish their old stocks of incomplete and unsold movements to meet the demands of their trade. For a discussion see: Chapiro, Adolphe. *Jean Antoine Lépine*, Paris, 1988.





## PROPERTY OF AN AMERICAN COLLECTOR

114

### A FINE AND RARE WEIGHT DRIVEN SKELETON TIMEPIECE WITH CALENDAR

signed on the dial, Lépine, Place des Victoires No. 12 and on the frame, Lépine à Paris, No. 4373, late 18th century  
The inverted "Y" frame on four leveling screws and secured to marble base, a pair of cylindrical brass weights suspended from polished steel cross piece together driving a single train with dead beat escapement with transverse screw depth adjustment, maintaining power, knife edge suspended gridiron pendulum with beat adjustment on crutch, white enamel dial with date ring enclosing roman chapters with Lépine's characteristic oval surround the numeral "1", seconds ring in the plain center, blued hands, accompanied by glazed dust shade  
19 3/4 in (50cm) high

US\$30,000 - 50,000

The technically innovative Swiss - born maker, Jean-Antoine Lépine (1720-1814) occupied premises at No. 12 Place des Victoires from 1789 to 1800. He is best known for the watch movement that bears his name. From 1500, until the last quarter of the 18th century, watch movements were essentially a thick sandwich of wheels and a fusee between two circular brass plates separated by ornamental pillars. Lépine dispensed with the bulky plates, pillars and the fusee by mounting a going barrel on a single large plate. Several slender bridges screwed to the plate hold the wheels of the train. Around the edge of the movement plate was a raised ring that slid into the watch case and was held in place by eccentric screws. In this way, Lépine dramatically reduced movement thickness. His design is known today as the "lépine calibre" or "calibre à ponts". It was quickly adopted by his most able pupil, A.-L. Breguet (1747-1823), who freely acknowledged his debt to Lépine.

Clocks by Lépine are relatively scarce, but made to the same high standards as his watches.

Illustrations of the movement can be seen on the front cover and inside the back cover.



115

**A FRENCH MONTH GOING GREAT WHEEL GLASS PLATE  
SKELETON TIMEPIECE**

First quarter 19th century

The restored arched glass plate centering the mainspring barrel and great wheel with Y-shaped spokes, white enamel annular arabic chapter ring and pierced gilt hands framing the train, motion work and pinwheel escapement, the steel rod pendulum with beat adjustment suspended from agate knife edge, on oval marble base, with further ebonized base and glass dome

*16in (40cm) high*

**US\$10,000 - 15,000**



116

**A FINE QUARTER CHIMING YORK MINSTER BRASS SKELETON CLOCK AND A DOME**

Attributed to William Frederick Evans of Handsworth, Birmingham, late 19th century

The substantial pierced frame joined by six screwed pillars, pierced silvered roman chapter ring, blued fleur de lis hands, triple chain fusee movement with anchor escapement, spring suspended wooden rod pendulum with cylindrical pewter bob, rack striking the hour on coiled blued steel gong, chiming the quarters on eight hammers mounted transversely between the towers, all raised on velvet plinth on molded rectangular marble base, accompanied by a glass dome  
26 ¾ in (68cm) high including base

US\$18,000 - 22,000





117

**A SKELETON TIMEPIECE WITH DETENT  
ESCAPEMENT AND A DOME**

Retailed by Vaughn, Bristol, third quarter 19th century  
The frame pierced with leafy scrolls, five notched tapered  
pillars, pierced silvered chapter ring with roman chapters  
on shield reserves, subsidiary seconds, hands now  
painted white, single chain fusee, maintaining power,  
detent escapement planted on the back frame, spring  
suspended wooden rod pendulum with cylindrical bob  
and rating nut, all on an oval molded white marble base  
with dome

*17 1/4in (43.5cm) high including base*

**US\$2,000 - 3,000**



118

**A FINE QUARTER CHIMING GILT BRASS WESTMINSTER CATHEDRAL SKELETON CLOCK**

Attributed to William Frederick Evans, Handsworth, Birmingham, second half 19th century

The substantial gilt frame shaped and pierced to the cathedral towers, eight screwed notched cylindrical pillars, silvered roman chapter ring on a third sub frame, blued fleur-de-lis hands, triple chain fusees, anchor escapement, spring suspended steel rod pendulum, rack striking the hour on coiled blued steel gong, chiming on eight bells with eight hammers mounted transversely between the towers, oval wood base with conforming glass dome  
*23in (58.5cm) high including base*

**US\$18,000 - 22,000**



119

**A FINE HOUR STRIKING SCOTT MEMORIAL  
SKELETON CLOCK WITH BALANCE WHEEL LEVER  
ESCAPEMENT AND A DOME**

Attributed to William Frederick Evans, Handsworth,  
Birmingham, mid 19th century

The frame pierced in Gothick style above the seated figure  
of Walter Scott and his dog, five notched cylindrical pillars,  
pierced silvered chapter ring with roman chapters on  
cartouche reserves, blued fleur-de-lis hands, twin chain  
fusees, straight line lever escapement with blued five arm  
balance, rack striking the hours on a gong, all raised on a  
molded rectangular base with conforming dome  
*22 1/2 in (57cm) including base*

US\$3,000 - 5,000





120

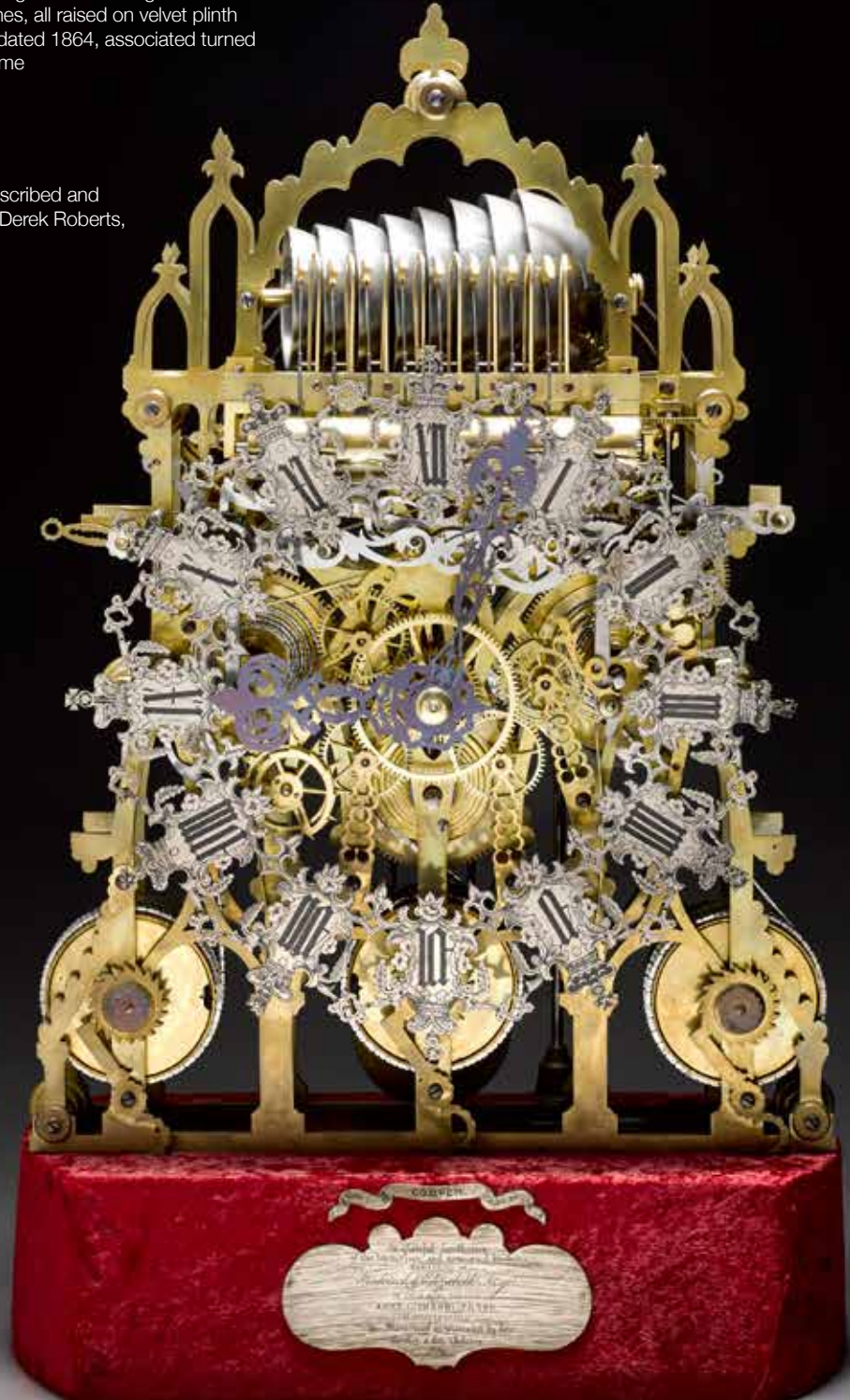
**A FINE QUARTER CHIMING BRASS SKELETON CLOCK WITH DEADBEAT ESCAPEMENT AND A DOME**

Attributed to Smith's of Clerkenwell, retailed by Cooper, Huddersfield, mid 19th century

The substantial frame pierced with arches capped by fleurs de lis, seven screwed knopped pillars, pierced silvered chapter ring with roman numerals each on a reserve engraved with distinctive coronet, blued pierced scroll hands, triple chain fusees, Vulliamy type deadbeat anchor, maintaining power, spring suspended mock gridiron pendulum, wheel work with six crossings partly pivoted in pierced brackets, striking train similarly pierced with polished scroll steel work, rack striking the hour on coiled blued steel gong, chiming on eight bells with eight hammers mounted transversely between the arches, all raised on velvet plinth with applied silver presentation plaque dated 1864, associated turned ebonized base with cylindrical glass dome  
24in (61cm) high including plinth

US\$25,000 - 35,000

A nearly identical clock by Smith's is described and illustrated in *British Skeleton Clocks* by Derek Roberts, pp 210 - 214



121

**A FINE HOUR AND HALF HOUR STRIKING SKELETON CLOCK  
WITH DEAD BEAT ESCAPEMENT AND DOME**

Retailed by Thos. Halliwell, Market, Place Dewsbury, mid 19th century  
The frame pierced with leafy scrolls, four cylindrical pillars, finely  
pierced silvered chapter ring with band of similar scrolls enclosing  
roman chapters, blued fleur-de-lis hands, twin chain fusees, dead  
beat escapement, spring suspended mock gridiron pendulum, rack  
striking the hours on a gong, passing half hour strike on a bell above  
the frame, all raised on oval velvet plinth with applied silver retailer's  
plaque, conforming white marble base and glass dome  
*22 1/2 in (57cm) including base*

US\$3,000 - 5,000





**AARON DODD CRANE'S CAROUSEL YEAR-GOING ASTRONOMICAL TIMEPIECE, NO. 5**

signed Boston Clock Co., 375 Days and with 1841 to 1855 patent dates  
On marble base, the gilt frame forming a two-tier portico, the upper tier with gilt scrolls supporting a bezel cast and chased with leaves enclosing an annular glass dial with paper roman chapter ring, the skeletonized movement with substantial circular plates joined by five turned pillars, Crane's escapement with eight piece "Carousel" torsion pendulum suspended between the plates, beehive fusee with line on pulley separate from spring barrel, the lower tier on tapered pillars, centering a leafy bezel framing an adjustable sunrise / sunset shutter painted with exotic scenes, a moon ball and a sun disk pivoted on common arbor, their relative motions controlled by wheel work on the back of the frame, two flanking silvered subsidiary for time and tide and for a perpetual calendar, with glass dome on ebonized base. 21in (63cm) high

**US\$70,000 - 90,000**

Unique in American clock making, the present clock is the crowning achievement of a lifetime's work by the inventive craftsman, Aaron Dodd Crane (1804-1860).

He was born on the family farm in West Caldwell, New Jersey and by all accounts was a self-taught inventor. He received his first clock patent at the age of 25, and for the rest of his life remained an innovator whose ideas were far from the mainstream of conventional clock making.

His career and a detailed description of the various clocks he designed is the subject of a NAWCC Bulletin Supplement published in 1987 by Frederick Shelley. One of perhaps four surviving similar clocks, Shelley calls No. 5 "Crane's *tour de force*". It is the cover illustration of his monograph and is described on pages 77-86.

The comprehensive collection offered in the following lots includes an example of each clock type devised by Crane and illustrated by Shelley. All but one incorporate a torsion pendulum whose inherent properties made possible the long duration running that is the main feature of many of the clocks. Several are weight driven, but those powered by springs employ a fusee which is rarely seen in American clocks. Crane also used his own escapement as well as motion and striking work.

**Literature**

Frederick Shelley. *Aaron Dodd Crane – An American Original*, NAWCC Bulletin Supplement 16, Summer 1987

William Drost, *Clocks and Watches of New Jersey*, Elizabeth, 1966



Lot 123 – Single ball torsion pendulum



Lot 126 – Six ball torsion pendulum







123

**AARON DODD CRANE'S SINGLE-BALL TORSION PENDULUM YEAR MANTEL CLOCK**

signed J. R. Mills & Co., Belleville, NJ, circa 1842-1844  
 The ebonized case with paper and glass dial within gilt mask, the two train brass movement with twin fusees and exposed springs for the striking and going trains mounted above the partly skeletonized plates, pendulum formed from a single brass ball 22 1/2 in (56.5cm) high

**US\$5,000 - 6,000**

In 1840, Crane found financial backing from several prominent citizens of Belleville, near Newark, NJ. They were intrigued by the idea of a clock that would run for a year on a single winding. A mill on the Passaic River was re purposed and J. R. Mills & Co. organized to manufacture the torsion pendulum clocks.

Another example of this clock is described and illustrated in Shelley, pp 53-56.



124

**AARON DODD CRANE'S SINGLE-BALL MONTH MANTEL CLOCK**

signed J. R. Mills & Co., Belleville, New Jersey, circa 1842-1844

The mahogany veneered and faux painted case with paper and glass dial, two train brass weight driven movement with pendulum formed from a single brass ball 22 3/4 in (57.5cm) high

**US\$5,000 - 6,000**

Illustrated in Shelley, fig. 87, with description, pp 57-61

125

**AARON DODD CRANE'S THREE-BALL MONTH MANTEL CLOCK**

signed J. R. Mills & Co., New York, circa 1845-1846  
The mahogany veneered and faux painted case with paper and glass dial, two train brass weight driven movement with pendulum formed from three balls suspended from bimetallic strips  
22 in (56cm) high

US\$5,000 - 6,000

Illustrated in Shelley, fig. 99, with description, pp 62-65.

Crane attempted in this model and in subsequent multi- ball models to compensate by suspending the balls from bi-metallic strips to alter their radius of rotation. This method of temperature compensation was not a great success.



126

**AARON DODD CRANE'S SIX-BALL YEAR MANTEL CLOCK**

signed Year Clock Co., New York circa 1846  
The ebonized case with paper and glass dial within gilt mask, the two train brass movement with twin fusees and exposed springs for the striking and going trains mounted above the partly skeletonized plates , pendulum formed from six balls suspended from bimetallic strips  
21 1/2 in (54cm) high

US\$5,000 - 6,000

Another example is described and illustrated in Shelley, pp 66-70.





127

127  
**AARON DODD CRANE'S THREE-BALL EIGHT-DAY MANTEL CLOCK**

Signed, J. R. Mills & Co., New York, circa 1846-1848  
 The mahogany veneered case with paper and glass dial, two train brass weight driven movement with pendulum formed from three balls suspended from bimetallic strips, striking the hour on a wire gong planted on the case back  
*20 ¾ in (52cm) high*

**US\$5,000 - 6,000**

Another example is described and illustrated in Shelley, pp 71 – 74.



128

128  
**AARON DODD CRANE'S SIMPLE PENDULUM 8-DAY MANTEL CLOCK**

signed J. R. Mills & Co., New York, 1850's  
 The mahogany veneered case with paper and glass dial, two train brass spring driven movement with anchor escapement and wire rod pendulum, striking the hour on a wire gong planted on the case back  
*18 ½ in (46.5cm) high*

**US\$5,000 - 6,000**

Illustrated in Shelley, fig. 128, with description, pp 75-76.

129

**A PATINATED, GILT AND SILVERED METAL TUERLINGX PATENT "TABLE TIME KEEPER"**

Signed James Tuerlingx, New York with patent date, Circa 1860  
Resembling the patent model, but on molded circular patinated base raised on three grape vine feet, the three supporting columns encircled by silvered grape vines, the horizontal engine turned gilt roman chapter dial within a similarly molded patinated bezel, blued arrow hands, the central brass weight lifted by a rod joined to one of three leafy grape clusters applied to the bezel; the pallets in the form of steel discs engaging the screw; lever escapement, subsidiary dial and seconds hand on the escape wheel arbor, bimetallic balance with timing and poising screws, semi spherical spring with regulator on the balance cock

*7 ¾ in (19.5cm) high*

**US\$15,000 - 18,000**

Biographical details on James Tuerlingx are lacking. He is thought to have been a Swiss émigré who then disappeared during the Civil War.

Tuerlingx was granted Patent no. 16,344 on January 6, 1857 for "Maintaining Power for Timepieces". He claimed in his patent:

"The nature of my said invention consists in a peculiar arrangement of parts for applying a weight to a fixed spiral or screw, so that, as said weight runs down and revolves on said screw, it gives motion to the other parts of the clock, either to drive the time or striking gear or both. And in connection with said arrangement of revolving weight, I make use of a peculiar means for winding the clock by raising up said weight at the same time that a retaining power is applied to continue the motions of the clock in winding."

130

**THE PATENT MODEL OF THE "SCREW CLOCK" WITH MAINTAINING POWER OF JAMES TUERLINGX, NEW YORK**

Signed and dated 1856, for Patent No. 15344, issued January 6, 1857  
The model consists of a pair of circular plates joined by three slender rods in which is planted a central spiral screw passing through a tapered cylindrical weight that that can be raised to wind the clock. The weight carries a pair of tapered rectangular steel pallets the engage the screw as the weight descends turning the main wheel of the clockwork and thus the lever escapement. A pair of steel rods parallel to the spiral and fixed to the weight turn with it. At their upper end, a geared cross piece engages the motion work driving the hands. On a turned wood base and enclosed by a later plastic cylinder

*7 ¾ in (20cm) high*

**US\$3,000 - 5,000**



129



130



131

**A RARE GILT METAL TRIPLE DIAL TUERLINGX  
PATENT SCREW CLOCK**

No. 9, signed on the base, the dial signed "The American  
Screw Clock," circa 1860

On molded circular base raised on three grape vine feet,  
the base with further applied berried vines the three  
supporting columns encircled by grape vines, forming  
an arch surmounted by a gilt eagle and trophy of arms  
and enclosing three silvered annular roman chapter rings  
revealing the motion work, the bezels cast and chased  
with grape vines; the central brass weight with eagle  
heads grasping three chains raised by lifting the finial; the  
pallets in the form of large steel discs engaging the screw;  
lever escapement, silvered subsidiary dial and seconds  
hand on the escape wheel arbor, bimetallic balance with  
screws, flat spring with regulator on the balance cock; on  
turned ebonized base with glass dome  
*28in (71cm) high*

US\$30,000 - 40,000



132

**A RARE GILT AND PATINATED METAL TRIPLE DIAL  
TUERLINGX PATENT SCREW CLOCK**

No. 12, signed on the base, the dial signed "Made for J. C. Kennedy, New York, The American Screw Clock," circa 1860. On patinated base cast and chased with grape vines and grotesque masks supporting a circular gilt base plate cast with leafy scrolls; the three elaborate pillars rising from hairy tripod feet and leafy calyx forming an arch surmounted by a patinated eagle and trophy of arms and enclosing three silvered roman chapter dials within scroll engraved molded bezels. The central brass weight with eagle heads grasping three chains raised by lifting the finial; the pallets in the form of steel discs engaging the screw; lever escapement, silvered subsidiary dial and seconds hand on the escape wheel arbor, bimetallic balance with screws, flat spring with regulator on the balance cock; with glass dome.

*29in (73cm) high*

**US\$30,000 - 40,000**





## PROPERTY OF VARIOUS OWNERS

133

### A RARE AND EARLY PENNSYLVANIA WALNUT LONGCASE CLOCK

Signed on the chapter ring, Peter Stretch, Philadelphia, second quarter 18th century

The case with sarcophagus top above molded pediment supported by ringed columns flanking the hood door, separate dial mask, cove molding above the plain long door, the plinth with central detachable panel, associated movement with 12-inch square brass dial, crown and cherub spandrels, silvered roman chapter ring, fleur-de-lis half hour marks, lozenge half quarter marks, matted center, ringed winding holes, chamfered date aperture, silvered seconds ring, the movement with rectangular plates joined by four knopped and ringed pillars, anchor escapement, inside count wheel hour striking on bell mounted on front plate, wooden rod pendulum, lead weights  
93 in (236cm) high

US\$15,000 - 20,000

Peter Stretch (1670-1746) was born in Staffordshire, England, and apprenticed with his older brother Samuel, a clockmaker who specialized in lantern clocks. A Quaker, Peter Stretch and his wife and three sons left England for Philadelphia in 1703. He set up his shop on the southwest corner of Second and Chestnut Streets known as "Peter Stretch's Corner," where he made and sold clocks and imported wares. He joined the Common Council of Philadelphia in 1708, and nine years later received a commission from the council to work on the town clock.

Stretch produced a wide range of clocks, including thirty-hour and eight-day ones with engraved brass movements, plain dials, and single hands and more elaborate ones with a sweep second hand, revolving moon dial, and musical works. His clock making sons, Thomas (1697-1765) and William (1701-1748) continued in their father's trade. His clocks are included in the collection of the Metropolitan Museum of Art as well as the Winterthur Museum.

For a detailed account of Stretch's life and work, see: Fennimore, Donald and Frank Hohmann. *Stretch, America's First Family of Clockmakers*. Winterthur (2013).

Although this clock retains its original seat board it does not align with the uprights of the present case. The case, which appears to be contemporary with the movement, shares design elements that are found on Stretch cases documented by Fennimore and Hohmann. In particular, the form of the hood, its moldings and ringed columns can be seen on other Stretch cases. The bottom of the plinth of the present clock has been cut away to form crude feet. The long door and central panel of the plinth share a similar molded edge that is uncommon, but found on other cases (e.g. Cat. No. 14, pp 144 - 145).



134

**A FINE FEDERAL INLAID MAHOGANY TALL CLOCK**

The case attributed to Robert Wood and James S. Taylor, Florida, New York, first quarter 19th century

The arched pediment above a frieze inlaid with stars, the arched door flanked by inlaid columns, trunk inlaid with further stars and paterae above an inlaid long door and conforming panel flanked by quarter columns, the plinth raised on French feet, painted white dial with flowers in the arch, arabic chapter ring enclosing seconds dial and date aperture, pierced hands, the dial with three feet pinned to the front plate of the brass movement with arched and cutout plates, anchor escapement, iron rod pendulum, rack striking the hours on a bell, cast iron weights

90in (228 cm) high

**US\$20,000 - 25,000**

The present clock is one of a small number in similarly inlaid cases whose attribution is based on a closely similar example in the collection of the New York State Museum, that is labeled "Wood & Taylor Cabinetmakers Florida [NY]" for Robert Wood and James S. Taylor. see John L. Scherer. *New York Furniture at the New York State Museum* (1983), pp. 36-37.





## PROPERTY OF AN AMERICAN COLLECTOR

135

### A FEDERAL INLAID MAHOGANY SHELF CLOCK

Massachusetts, late 18th, early 19th century

The molded top with pierced frets flanked by brass finials over the kidney shaped painted white dial with roman chapter ring above vacant gilt scroll panel, the plinth inlaid with patera, raised on ogee bracket feet, brass four pillar weight driven movement with spring suspended pendulum to anchor escapement

*40 in (101cm) high*

US\$4,000 - 6,000

## ANOTHER PROPERTY

136

### A BRASS LANTERN CLOCK WITH LATER MOVEMENT

Signed on the dial plate "Thomas Knifton at the Crossed Keys in Lothbury", mid 17th century and later

The bell strap surmounted by and raised on substantial urn finials, engraved dolphin frets on a secondary plate above a gallery fret supported by tapered columns raised on ball feet, the 6 ¾ inch diameter Roman chapter ring with fleur-de-lis half hour marks and inner quarter hour track framed by leaf engraved corners, the center signed with Knifton's 'cross keys' pictogram and decorated with flowerheads emanating from VI, the side door latches enclosed by elaborately engraved rosettes, the adapted French two train movement with anchor escapement, adjustable pallets and counterpoised crutch, striking on the original bell by means of crossed out count wheel and improvised link to later hammer, pierced and engraved gilt hands

*18in (45cm)high*

US\$1,200 - 1,800



## PROPERTY OF AN AMERICAN COLLECTOR

137

### A RARE NEOCLASSICAL PAINTED METAL URN-FORM PROJECTION CLOCK

Late 18th / early 19th century

The black body on rectangular base, sides painted with classical allegories of Astronomy and Navigation, pierced to hold a circular verge movement with reverse engraved silver parabolic arabic chapter dial opposite an adjustable lens in brass sleeve, the removable domed lid opening to reveal a lamp (now lacking)

14 1/2 in (37cm) high

US\$2,000 - 2,500



## PROPERTY OF A NEW YORK COLLECTOR

138

### A WALNUT STRIKING TRAVELING CLOCK WITH LOUD / SOFT ADJUSTMENT

Signed, Payne & Co., 163 New Bond St., London, mid-19th century  
Surmounted by a gilt faceted handle with scroll uprights over beveled glass panels and plinth base on brass bun feet, rectangular 3 3/4 by 4 1/2 inch gilt dial engraved with leafy scrolls on striated ground, the roman chapter ring engraved with flower heads at the half hours, blued steel hands, the twin chain fusee movement with gilt lever platform, pointed pallet escapement, screwed bimetallic balance and flat blued spring, rack striking the hour and half hour on a coiled blued steel gong  
10 3/4 in (27.5cm) high including handle

US\$6,000 - 8,000



139

**A FINE BRASS MOUNTED MAHOGANY QUARTER CHIMING TABLE CLOCK**

John Ellicott, London, mid-18th century

The inverted bell top case with leaf capped handle, scale frets to the rectangular side panels, raised on brass leafy scroll feet, the front door with brass scroll frets and bezel enclosing the circular enamel roman and arabic chapter dial, strike / silent lever at IX o'clock, pierced scroll hands, the shaped rectangular movement engraved with leafy scrolls and signature, five knopped pillars, triple fusees with wire lines, verge escapement, spring suspended pendulum with engraved lenticular bob, striking the hour on a bell, quarter chiming with trip repeat on nest of eight bells

*19 1/2 in (50 cm) high including handle*

**US\$12,000 - 18,000**





**PROPERTY OF VARIOUS OWNERS**

140

**AN EBONIZED TABLE CLOCK WITH ALARM AND PULL QUARTER REPEAT**

Henry Hurt, London, mid 18th century

The inverted bell top case with knopped handle and arched glazed side panels on molded block feet, 5 1/2 inch dial with strike / silent ring in the arch, signed roman and arabic chapter ring enclosing silvered alarm setting disc, pendulum and date apertures in the matted center, all flanked by scroll and mask spandrels, the scroll engraved movement with five knopped pillars, twin gut fusees, verge escapement with adjustable pallets, knife edge suspension to the pendulum with pear shaped bob, rack striking the hour on a bell, pull quarter repeat on nest of six bells, separately wound alarm train also striking on the hour bell

16 1/2 in (42cm) high including handle

US\$6,000 - 8,000

Henry Hurt, apprenticed 1713, free by 1728, active until c. 1758.



141

**AN EBONIZED STRIKING TABLE CLOCK**

John Knapp, London, early 18th century

The caddy top case with tied bud handle over molded cornice, rectangular glazed side panels, similarly molded base now on block feet, 7-inch rectangular gilt dial with engraved border and leafy scroll signature panel with strike / silent lever over the silvered roman and arabic chapter ring with fleur-de-lis half hour marks and lozenge half quarter marks, winged cherub spandrels, decorated mock pendulum and date apertures with ringed winding holes in the matted center, blued hands, twin fusee movement with wire lines, verge escapement with knife edge suspended pendulum, rack striking the hour on bell mounted on front plate, trip hour repeat, the back plate engraved with leafy scrolls enclosing signature  
*16 1/2 in ( 42cm ) high including handle*

US\$7,000 - 9,000



## PROPERTY OF AN AMERICAN COLLECTOR

142

### AN EBONIZED DUTCH STRIKING TWO-TUNE MUSICAL TABLE CLOCK WITH MOON PHASE

Signed John Hallifax, London, mid 18th century

The case with brass banded inverted bell top and knopped handle over brass lined break arch door and circular sound frets above glazed side panels, raised on brass molded block feet, 8 ½ inch brass dial with moon phase in the arch, silvered subsidiary “sonne / silence” and tune selection rings flanking the roman and arabic chapter ring with fleur de lis half hour marks, the matted center with pendulum and date apertures and applied silvered signature plaque, the scroll engraved six pillar triple fusee movement with wire lines, verge escapement with knife edge pendulum suspension, striking on the hour and half hour on two bells via linked hammers, playing one of two tunes on the hour or at will on eight bells with fourteen hammers  
*24in (61cm) high including handle*

US\$7,000 - 9,000







## PROPERTY OF VARIOUS OWNERS

143

### **A FINE GREEN CHINOISERIE LACQUER QUARTER CHIMING TWO-TUNE MUSICAL CLOCK**

Daniel de St Leu, London, mid - 18th century

The bell top case with urn and spire finials, side handles above arched pierced frets, the canted corners with applied floral swags flanking the arched door, the molded base raised on gilt scroll feet, 8 inch brass dial with silvered tune selection ring above chime/not chime and strike / silent levers in the arch, leafy scroll spandrels, silvered roman and arabic chapter ring, enclosing date aperture, mock pendulum and silvered signature plaque in the matted center, the triple fusee movement with wire lines, six knopped pillars, verge escapement with knife edge suspended bob pendulum, backplate engraved with foliate scrolls and signature, striking the hour and chiming the quarters and playing a tune on the hour or on demand on a nest of eight bells with sixteen hammers  
*24 in (61cm) high*

**US\$15,000 - 25,000**

## PROPERTY FROM THE ESTATE OF RICHARD NIXON

144

### A FINE AND RARE GEORGE III NEOCLASSICAL ORMOLU URN CLOCK

Signed Paul Rimbault, London, last quarter 18th century  
Surmounted by an eagle and flanked by rising scroll  
handles with ram's masks, silvered minute and roman  
chapter rings around the body of the urn above drapery  
and paterae, the molded base raised on ball feet, the  
side panels with applied trophies of arms, between  
rams' masks at the angles, enclosing a twin chain fusee  
movement with verge escapement and spring suspended  
pendulum with rating screw, rack striking the hour on a  
bell, strike/silent dial on back plate, motion work for the  
chapter rings planted on a horizontal plate secured to the  
top of the front and back plates. 19 48.5

US\$20,000 - 30,000

English urn clocks are uncommon and most often associated with the work of Matthew Boulton. However, the form was developed in France in the 1760's. Derived from the newly fashionable designs of "*le goût grec*", the neo classical urn was quickly transformed into a novel clock which dispensed with the conventional circular dial and hands. Instead, the hours and minutes are indicated by numbered bands rotating around the body of the urn, thus becoming a *pendule à cercles tournants*.

In *The Early Neoclassical in France*, Svend Eriksen notes the earliest clocks of this form appear in the designs of the *bronzier* Jean-Louis Prieur for the Royal Palace at Warsaw in 1766. A well documented example of the form was delivered to Madame du Barry by the *marchand mercier* Poirier in 1768. These earliest French urn clocks, employ a conventional Paris movement concealed within the base that required a right angle bend of the clock's gearing upward through the body of the urn to turn the hour and minute rings. Because of this, the clocks tend to jam if the rings are not perfectly balanced.

The present clock is similar in that it also employs a conventional English movement. By placing the motion work above the movement, Rimbault has avoided the mechanical disadvantage of the French design.





**PROPERTY OF VARIOUS OWNERS**

145 W

**A FINE VIENNESE WALNUT CHIMING LONGCASE CLOCK**

Signed lac. Mæÿer in Wienn, second quarter 18th century  
 The hood formerly with caddy top and columns flanking the arched door, above a long door with glazed lenticel all supported by a plinth raised on bun feet, the 12 ¼ inch arched brass dial with scroll spandrels incorporating medallions depicting the Four Seasons, silvered roman and arabic chapter ring with fleur-de-lis half hour marks, enclosing seconds ring and date aperture in the matted center, pierced blued hands, the arch engraved with scrolls and strapwork and with aperture for age and aspect of the moon, subsidiary silvered rings for day of the week, *schlagt / schlagt nichts* and calibrated ring to adjust the moon phase, the three train weight driven movement with substantial rectangular plates joined by five knopped and ringed pillars, anchor escapement, striking the hours on a bell mounted above the plate by means of a count wheel planted on the front plate, chiming on a nest of nine bells by nine hammers and shifting pinned barrel set between the plates, three cast iron weights, iron rod pendulum  
 height 92.5in (234cm)

**US\$5,000 - 6,000**

**Literature**

Kaltenböck, Frederick. *Viennese Timepieces*. (1993) Tall clocks with similar complications, signed, Mayer [or Meier] Wienn are illustrated in Figs. 489, 495 and 496





146

**A FINE ARABESQUE SEAWEEED MARQUETRY  
LONGCASE CLOCK**

signed Jonathan Lowndes, London, circa 1700

The caddy top surmounted by three ball and spire finials over three-quarter and quarter columns, the trunk door inlaid with intricate patterns of symmetrical strapwork and foliate scrolls, centered by a circular brass lenticle, on a matching plinth with kickboard, the 12 inch square brass dial with cherub and crown spandrels interspersed by foliate engraving, signed low on the silvered Roman and Arabic chapter ring with lozenge half-quarter marks, matted center, ringed winding squares and chamfered date aperture, the movement with five knopped and finned pillars and inside countwheel strike on a bell  
*height 96 in (245cm)*

**US\$12,000 - 18,000**

**Provenance**

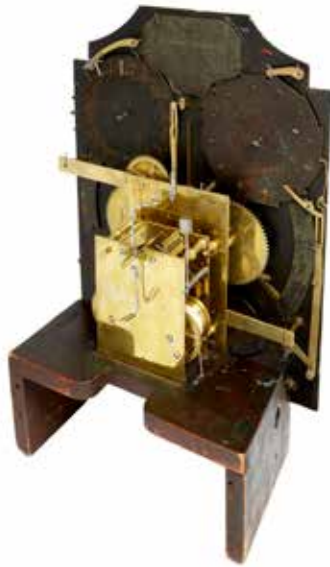
The Wetherfield Collection of English Clocks  
Arthur S. Vernay, New York, 1928

The clock has remained in the same family since its purchase and is accompanied by an inscribed copy of the Vernay catalogue of the Wetherfield Collection.

**Exhibited**

New York Association of Art and Antique Dealers, *Art Treasures Exhibition*, 1955





## PROPERTY FROM THE ESTATE OF RICHARD NIXON

147

### THE REMARKABLE ASTRONOMICAL / TIDAL CLOCK OF JAMES FERGUSON SHOWING HIGH WATER AT LONDON BRIDGE

The dial and its wheelwork attributed to Ferguson, the motion work and clock movement supplied by William Dutton, circa 1775, the mahogany display case probably late 18th / early 19th century

The finely painted metal dial with an aperture in the shaped arch displaying a bird's eye view of the Thames at London Bridge, after the 1751 engraving by Thomas Bowles, to which has been added a rising shutter to simulate the tide; this is flanked by images of the Zodiac sign and ruling deity of the Day of Week all within a border of painted gilt scrolls; the main 24-hour chapter ring encloses a compass rose for reading the Sun's azimuth and centers two concentric rotating discs; the lower carrying the figure of the sun around the dial in 24 hours; it is also marked with an hour scale and the 29 ½ days of the lunar cycle, thus showing the age and aspect of the moon which can be seen through apertures in the upper disc; the upper disc is painted with an array of stars and carries the Moon disc; it rotates with the daily period of the Moon, 24 hours 50 ½ minutes; the apertures are labeled to mark the time of high water at London Bridge and the age of the Moon; two further scales, positioned at Dawn and Dusk, adjacent the main chapter ring, indicate respectively the yearly variation of the Sun's meridian altitude and the hours of twilight; two additional apertures at the lower corners of the dial display the date and month.

The two train weight driven brass movement has rectangular plates joined by four knopped pillars and anchor escapement with spring suspended iron strap pendulum with calibrated rating nut, rack striking the hour on a bell; the additional motion work to drive the animation in the dial mounted on a sub plate and linked to the going train by two wheels planted on the front plate, these wheels can be adjusted by a rack and lever on an adjacent arbor.

The mahogany case in the form of a fluted column with scroll capital supporting a concave hood with free standing columns  
89 in (226cm) high

US\$20,000 - 30,000

James Ferguson (1710-1776) was one of the most highly regarded and successful popularizers of natural science in the 18th century. The self-taught son of a Scottish tenant farmer, Ferguson possessed a great intellectual curiosity together with a talent for mechanics. In his teens and early 20's, Ferguson worked for the local gentry, maintaining clocks and repairing machinery. His patron sent him to Edinburgh where he was trained to be a painter of miniatures.

Although he made his living as a limner for many years, he took up the study of astronomy. He attracted the attention of the mathematician Colin Maclaurin with a device that consisted of series of concentric volvelles which could be rotated to calculate the positions of the Sun and Moon and predict eclipses. With the professor's help Ferguson published this "Astronomical Rotula" in 1742. He soon moved to London where he made and sold globes.

Ferguson was the rare individual whose was able to present the ideas of astronomy in clear accessible language. In 1756, he published a highly successful popular non mathematical text, *Astronomy Explained upon Sir Isaac Newton's Principles*. For the rest of his life he was a widely respected lecturer on popular astronomy and other scientific topics that he illustrated with demonstration apparatus of his own design.

Neither a professional astronomer nor clockmaker, he was nevertheless well respected by the scientific and horological communities. Ferguson's talent lay in the ability to devise wheel work to demonstrate celestial phenomena. He designed dials for the important four sided astronomical clock in the English Royal Collection that was made by Eardley Norton for George III in 1765. Ultimately he was granted a pension by George III and, in 1763, elected to the Royal Society.

The present clock is described and illustrated in Ferguson's 1773 compendium *Select Mechanical Exercises: Shewing how to construct different Clocks, Orreries and Sundials*. where he notes it requires "... only two Wheels and a Pinion added to the common Movement." From 1768, Ferguson lived in Bolt Court, off the Strand in London. His neighbors included the clockmakers Thomas Mudge and William Dutton with whom he was well acquainted. While it is most probable that Ferguson himself made and painted the dial and its moving parts, the fine "common movement" with its two extra wheels and additional motion work was made by William Dutton.

### References

Davenhall, Clive. *James Ferguson: A Commemoration*. Journal of Astronomical History and Heritage. V. 13 pp 179 – 186 (2010)  
Henderson, Ebenezer. *Life of James Ferguson, F. R. S.*, Edinburgh (1867)  
King, H. C. and J. R. Milburn. *Geared to the Stars: The Evolution of Planetariums, Orreries and Astronomical Clocks*. Toronto (1978)  
Ferguson, James. *Select Mechanical Exercises: Shewing how to construct different Clocks, Orreries and Sundials.*, London (1773)





## PROPERTY OF AN AMERICAN COLLECTOR

148

### A FINE MAHOGANY WALL REGULATOR WITH DENNISON'S THREE-LEGGED GRAVITY ESCAPEMENT AND ARNOLD ZINC / STEEL PENDULUM

Dent, 61 Strand & 34 Royal Exchange London, no. 1437, circa 1853  
 The arched mahogany case with glazed sides and conforming arched lenticle in the trunk suspended from an iron backplate, circular glazed aperture with brass shuttered winding hole revealing the 15-inch circular silvered regulator dial with outer minutes ring enclosing a subsidiary roman chapter ring above a seconds dial, blued steel hands; the substantial four pillar movement secured to brackets on the cast - iron backplate with Harrison's maintaining power and wheels cut with six crossings, the escapement pivoted beneath arched cutouts in the plates, five-rod zinc and steel gridiron pendulum, also suspended from the backplate, patinated brass-cased weight with integral pulley. 60 in. (152 cm) high

US\$18,000 - 22,000

The present clock was made while Dent was engaged in the construction of the clock for the New Palace at Westminster, begun in 1852, now referred to as "Big Ben." It employs a very early form of the three - legged gravity escapement, invented by Edmund Beckett

Dennison (Lord Grimthorpe) for use in the Westminster clock. An 1852 drawing by Dennison, sent to the Astronomer Royal, G. B. Airy, is virtually identical to the gravity escapement in the present clock.

The pendulum design, introduced by John Arnold, consists of two zinc and three steel rods and a large brass-clad bob, pierced with rectangular openings and a bridge acting as the point of suspension. In this configuration, the bob's center of gravity rests on a screw threaded into the lowest cross piece of the pendulum. The screw may be turned for adjustment by means of a pin inserted into small holes along its length. The screw also has a calibrated rating scale and terminates with an index to the silvered beat scale.

#### Literature

Mercer, Vaudrey. *The Life and Letters of Edward John Dent, Chronometer Maker, and Some Account of His Successors* London, 1977. and Supplement, 1983. [recorded in the supplement, p. 846]

Roberts, Derek. *English Precision Pendulum Clocks* Atglen, PA, : Schiffer, 2003.

Staeger, Hans. *100 Years of Precision Timekeepers from John Arnold to Arnold & Frodsham, 1763 - 1862* Stuttgart, 1997. pp 721-722, 845-848. Illustrated with a detailed description.



149

**A FINE MAHOGANY QUARTER CHIMING DOMESTIC  
REGULATOR WITH GLASS ROD PENDULUM**

Dent, London, no. 1012, last quarter 19th century

The arched hood pierced with demi lune sound fret, above a glazed long door, on paneled plinth, square silvered dial with minute ring enclosing roman chapters and subsidiary seconds, blued hands, shutters for the winding arbors set into the glazed hood door, massive three train weight driven movement with substantial rectangular plates joined by six pinned knopped pillars, secured by three screws to bronze seat board, deadbeat escapement, maintaining power, beat adjustment to crutch, three patinated brass clad weights with integral pulleys, rack striking the hour on large bell above the movement, chiming the quarters on a further four bells, pendulum suspended from brass plate secured to the backboard, cylindrical bronze clad bob with calibrated rating nut  
77in (195cm) high

US\$8,000 - 10,000

## PROPERTY OF VARIOUS OWNERS

150

### **A FINE AND RARE GILT BRONZE AND GLASS MYSTERY CLOCK.**

Signed by Jean Eugène Robert-Houdin, Paris, mid-19th century

The transparent circular glass dial with roman chapters and gilt arrow hands within a gilt bezel above a transparent glass column on a fluted gilt base supported by three gryphons, above a gilt plinth cast with scrolls and grotesque masks, all resting on a brass inlaid ebonized circular base concealing a two train movement with rectangular plates stamped, *E. Robert-Houdin 3857*, with platform lever escapement, striking the hour and half hour on a gong fixed to the base by means of a count wheel.

*Height 22 1/2in (57cm)*

**US\$30,000 - 50,000**

By the early 19th century, improved manufacturing methods, driven by increasing consumer demand led to the proliferation of relatively inexpensive clocks. What had been an expensive luxury was now an affordable decorative accessory. Nevertheless, “clockwork” remained an object of fascination. The workings of even the most humble shelf clock remained somewhat mysterious. Imagine then what a 19th century audience thought of a clock that had no apparent mechanism.

The clocks offered in the three following lots are famous examples of such a “mystery.” They were created by Jean Eugène Robert-Houdin (1805 – 1871) who is today considered the father of modern magic and, during his lifetime, was a French national hero.

Throughout Jean Eugène Robert-Houdin’s life the magical and the mechanical were always deeply intertwined. We see this dichotomy best expressed in his famous stage acts such as “The Marvelous Orange Tree” and his unique horological designs.

Born into a family of clockmakers in 1805, young Jean Eugène was a lover of the mechanical arts, especially automatons and soon began

an apprenticeship under his cousin Jean Martin Robert. Soon after, Jean Eugène began to work for Noriet, a prominent horologist in Tours where on one fateful day, a very ill Jean Eugène met the famous conjurer Giovanni Torrini. After moving to Paris to start a comedy company, Jean Eugène met his future wife, Joséphine Cécile Egaltine Houdin, a daughter of the famous horologist, Jacques-François Houdin, who was once under the tutelage of A.L. Breguet. After their marriage, Jean Eugène changed his last name to “Robert-Houdin,” and with this change came a great rebirth for the artist whose career as both an illusionist, inventor and horologist soon soared to incredible heights.

Throughout the 1840s and 50s, Robert-Houdin’s celebrity grew as he performed private shows for Queen Victoria at Buckingham Palace and exhibited his inventions at the Universal Exposition of 1855. He passed away from pneumonia on June 13th, 1871, aged 65.

Perhaps the most famous tribute to the master illusionist was Ehrich Weiss’s decision to change his name to Houdini.

In the late 1830s, Robert-Houdin began to make mystery clocks with glass dials and their movements hidden in the base of the clock. As the movements for these clocks were invisible to the naked eye, onlookers were enchanted by the pieces, coming up with their own theories on how the hand moved. Robert-Houdin showcased his creations at the Exhibition of French Industry in 1839, for which he won a bronze medal.

This iconic clock is part of his fourth series. Its secret is that the glass column is actually two concentric tubes. The outer one is fixed but the inner one is free to rotate transmitting motion from the movement to the dial. The dial is also made in two parts. The numerals are painted on a fixed disc. The hands are moved by a second disc with finely notched rim that engages the inner column. This mechanism was the inspiration for the 20th century mystery clocks of Cartier.





**A FINE AND RARE PATINATED AND GILT BRONZE MYSTERY CLOCK**

Signed by Jean Eugene Robert-Houdin, Paris, mid 19th Century

The transparent glass dial and single gilt hand within a gilt bezel above the vase shaped patinated case, enhanced with an applied gilt putto supporting a pair of chimerae concealing the link to contrate wheels mounted within the case and on the front plate of a two train circular movement, with engraved signature, *Robert-Houdin, Paris*, now with platform lever escapement, striking the hour and half hour on a bell by means of a count wheel, on a carved gilt wood base *en suite*

Height 16 in (41cm) including wood base

**US\$10,000 - 12,000**

This clock is one of his second series of clocks, and the first to incorporate a transparent dial. When one of these was exhibited in London in 1838, onlookers were enchanted, coming up with their own theories on how the hand moved. As the movements for these clocks were invisible to the naked eye, it was even suggested they were operated by magnetism. Robert-Houdin showcased his creations at the Exhibition of French Industry in 1839, for which he won a bronze medal. See Derek Roberts, *Mystery, Novelty & Fantasy Clocks*, pp 225-226.



**A FINE AND RARE PATINATED AND GILT BRONZE MYSTERY CLOCK**

Signed by Jean Eugene Robert-Houdin, Paris, mid 19th Century

The white enamel dial with roman chapters and pierced blued hands within a gilt bezel cast with scrolls above the vase shaped patinated case, enhanced with an applied gilt putto supporting a gryphon and leafy scroll concealing the link to contrate wheels mounted within the case and on the front plate of a two train circular movement, with engraved signature, *Robert-Houdin, Paris*, now with platform lever escapement, striking the hour and half hour on a bell by means of a count wheel, on a carved molded ebonized wood base

Height 16 in (41cm) including wood base

US\$5,000 - 7,000

This clock is one of the uncommon first series of Houdin's clocks. It employs a Paris movement adapted by replacing the conventional motion work with a contrate wheel mounted on the setting arbor and engaging a rod linked to further motion work behind the dial. See Derek Roberts, *Mystery, Novelty & Fantasy Clocks*, p224 for a similar example.

This arrangement of contrate wheel and rod probably originated during the latter part of the 18th century to rotate the chapter and minute rings of early French vase shaped *pendules à cercles tournants*.





153

**A REMARKABLE CARVED AND BRONZE MOUNTED QUARTER STRIKING HALL CLOCK**

Circa 1900, the case and bronzes Japanese, the movement probably English

In the form of an oval column, elaborately carved on all sides with panels of cranes amid bamboo and clouds on a conforming carved base and surmounted by a pair of finely modeled bronze dragons with entwined tails supporting nested bells, the patinated and silvered japanesque dial with applied gilt arabic numerals, pierced gilt hands, triple chain fusee with rectangular plates joined by four screwed pillars, anchor recoil escapement, striking the hours and quarters on the bells above the case

*88 in (223cm) high*

**US\$30,000 - 35,000**

The present clock appears to be from the same workshop as another with automaton striking commissioned in 1901 from Tiffany & Co., for the Henry Seligman mansion at 30 East 56th Street, New York, sold in these rooms 23 January 2014, lot 1086, and now in the Museum of Fine Arts, Boston.

Both clock cases are formed from three segments comprising the base, trunk and hood with the movement and automaton figures above. A storage drawer for the clock keys is concealed in the bottom of their trunks. The carved panels on the clocks depict the same cranes amid bamboo. The Seligman clock is however, further embellished with applied carved flowers and the separate base is carved with minogame, or feather-tailed fish, that in Japanese culture represent longevity and felicity. The base of the present clock is similarly carved but depicts winged dragons above a band of lotus.

The monumental elaborate hall clock seems to have been a fashion characteristic of The Gilded Age. In America, workshops such as the Horner Company in New York and others based in Grand Rapids MI, produced cases to be sold in the trade and fitted with an appropriate movement. The present clock is a reflection of this fashion and the taste for Japanese arts at the turn of the last century.



# INDEX

<b>A</b>		<b>G</b>		<b>O</b>	
Agassiz	74	Gattle & Co.	105	Omega	91
Audemars Piguet	77	Geneva Clock Co	102	Otay Watch Co.	40-42
<b>B</b>		Golay Fils & Stahl, Geneva	55	Oudin, Charles	56
Ball	1, 16-17, 34	Goyer, Jean	110	<b>P</b>	
Beauvais, Antoine	109	Gregson à Paris	68	Patek Philippe	50, 79, 84, 86-88, 92, 95
Bowman, Ezra F.	38-39	Grignon, Daniel & Thomas	64	Payne & Co.	138
Breguet	93-94	<b>H</b>		Potter, Albert H.	47
<b>C</b>		Hallifax, John	142	<b>R</b>	
Cartier	81, 106	Heuer	89	Rimbault, Paul	144
Chopard	90	Hubert, Pascal	70	Robert-Houdin, Jean-Eugene	150-152
Crane, Aaron Dodd	122-128	Huguenin, A. & Sons	48	Rolex.	82-83, 85
Cressarrow	78	Hurt, Henry	140	Romilly	67
<b>D</b>		<b>J</b>		<b>S</b>	
Daniel Quare	62	Jurgensen, Jules	51	Stretch, Peter	133
De St. Leu, Daniel	143	<b>K</b>		<b>T</b>	
Dent	148-149	Knapp, John	141	Tiffany & Co.	53, 104 129-132
Desbois & Wheeler	57	Knifton, Thomas	136	Tuerlingx, James	
Dubois fils	112	<b>L</b>		<b>V</b>	
Dutton , William	147	Lange, A.	52	Vacheron & Constantin	76
<b>E</b>		Lecoultre, Ami	49	Volta	54
E. Howard & Co	16	Lepaute	107	<b>W</b>	
Elgin	2-15	Lepine, Jean-Antoine	113-114	Waltham	18-31, 33, 35- 36
Ellicott, John	63, 72, 139	LeRoy et fils, Paris	65	Wood & Taylor	134
<b>F</b>		LeRoy, JLn.	71		
Fasoldt, Charles	45-46	Lowndes, Jonathan	146		
Ferguson, James	147	<b>M</b>			
		Mozart	37		
		Muller, Franck	80		
		<b>N</b>			
		New York Watch Co	44		
		Newman, Robert	61		



**FINE WATCHES  
AND WRISTWATCHES**

Wednesday 22 June 2016  
New Bond Street, London

**ROLEX.**

A rare stainless steel automatic  
divers watch made for Comex  
Submariner Ref:5514, Circa 1975  
£40,000 - 60,000

**ENQUIRIES**

+44 (0) 20 7393 3869  
watches@bonhams.com



**Bonhams**

LONDON

[bonhams.com/watches](http://bonhams.com/watches)

## CONDITIONS OF SALE

The following Conditions of Sale, as amended by any published or posted notices or verbal announcements during the sale, constitute the entire terms and conditions on which property listed in the catalog shall be offered for sale or sold by Bonhams & Butterfields Auctioneers Corp. and any consignor of such property for whom we act as agent. If live online bidding is available for the subject auction, additional terms and conditions of sale relating to online bidding will apply; see [www.bonhams.com/WebTerms](http://www.bonhams.com/WebTerms) for the supplemental terms. As used herein, "Bonhams," "we" and "us" refer to Bonhams & Butterfields Auctioneers Corp.

1. As used herein, the term "bid price" means the price at which a lot is successfully knocked down to the purchaser. The term "purchase price" means the aggregate of (a) the bid price, (b) a PREMIUM retained by us and payable by the purchaser EQUAL TO 25% OF THE FIRST \$100,000 OF THE BID PRICE, 20% OF THE AMOUNT OF THE BID PRICE ABOVE \$100,000 UP TO AND INCLUDING \$2,000,000, AND 12% OF THE AMOUNT OF THE BID PRICE OVER \$2,000,000, and (c) unless the purchaser is exempt by law from the payment thereof, any California, Arizona, Colorado, Connecticut, Florida, Georgia, Illinois, Massachusetts, Nevada, New York, Pennsylvania, Texas, Washington, D.C., Washington state, or other state or local sales tax (or compensating use tax) and other applicable taxes.

2. On the fall of the auctioneer's hammer, the highest bidder shall have purchased the offered lot in accordance and subject to compliance with all of the conditions set forth herein and (a) assumes full risk and responsibility therefor, (b) if requested will sign a confirmation of purchase, and (c) will pay the purchase price in full or such part as we may require for all lots purchased. No lot may be transferred. Any person placing a bid as agent on behalf of another (whether or not such person has disclosed that fact or the identity of the principal) may be jointly and severally liable with the principal under any contract resulting from the acceptance of a bid.

Unless otherwise agreed, payment in good funds is due and payable within five (5) business days following the auction sale. Whenever the purchaser pays only a part of the total purchase price for one or more lots purchased, we may apply such payments, in our sole discretion, to the lot or lots we choose. Payment will not be deemed made in full until we have collected good funds for all amounts due.

Payment for purchases may be made in or by (a) cash, (b) cashier's check or money order, (c) personal check with approved credit drawn on a U.S. bank, (d) wire transfer or other immediate bank transfer, or (e) Visa, MasterCard, American Express or Discover credit, charge or debit card. A processing fee will be assessed on any returned checks. Please note that the amount of cash notes and cash equivalents that can be accepted from a given purchaser may be limited.

The purchaser grants us a security interest in the property, and we may retain as collateral security for the purchaser's obligations to us, any property and all monies held or received by us for the account of the purchaser, in our possession. We retain all rights of a secured party under the California Commercial Code. If the foregoing conditions or any other applicable conditions herein are not complied with, in addition to other remedies available to us and the consignor by law, including without limitation, the right to hold the purchaser liable for the purchase price, we at our option may either (a) cancel the sale, retaining as liquidated damages all payments made by the purchaser or (b) resell the property, either publicly or privately, and in such event the purchaser shall be liable for

the payment of any deficiency plus all costs and expenses of both sales, our commission at our standard rates, all other charges due hereunder, attorneys' fees, expenses and incidental damages. In addition, where two or more amounts are owed in respect of different transactions by the purchaser to us, to Bonhams 1793 Limited and/or to any of our other affiliates, subsidiaries or parent companies worldwide within the Bonhams Group, we reserve the right to apply any monies paid in respect of a transaction to discharge any amount owed by the purchaser. If all fees, commissions, premiums, bid price and other sums due to us from the purchaser are not paid promptly as provided in these Conditions of Sale, we reserve the right to impose a finance charge equal to 1.5% per month on all amounts due to us beginning on the 31st day following the sale until payment is received, in addition to other remedies available to us by law.

3. We reserve the right to withdraw any property and to divide and combine lots at any time before such property's auction. Unless otherwise announced by the auctioneer at the time of sale, all bids are per lot as numbered in the catalog and no lots shall be divided or combined for sale.

4. We reserve the right to reject a bid from any bidder, to split any bidding increment, and to advance the bidding in any manner the auctioneer may decide. In the event of any dispute between bidders, or in the event the auctioneer doubts the validity of any bid, the auctioneer shall have sole and final discretion either to determine the successful bidder or to re-offer and resell the article in dispute. If any dispute arises after the sale, our sales records shall be conclusive in all respects.

5. If we are prevented by fire, theft or any other reason whatsoever from delivering any property to the purchaser or a sale otherwise cannot be completed, our liability shall be limited to the sum actually paid therefor by the purchaser and shall in no event include any compensatory, incidental or consequential damages.

6. If a lot is offered subject to a reserve, we may implement such reserve by bidding on behalf of the consignor, whether by opening bidding or continuing bidding in response to other bidders until reaching the reserve. If we have an interest in an offered lot and the proceeds therefrom other than our commissions, we may bid therefor to protect such interest. **CONSIGNORS ARE NOT ALLOWED TO BID ON THEIR OWN ITEMS.**

7. All statements contained in the catalog or in any bill of sale, condition report, invoice or elsewhere as to authorship, period, culture, source, origin, measurement, quality, rarity, provenance, importance, exhibition and literature of historical relevance, or physical condition **ARE QUALIFIED STATEMENTS OF OPINION AND NOT REPRESENTATIONS OR WARRANTIES.** No employee or agent of Bonhams is authorized to make on our behalf or on that of the consignor any representation or warranty, oral or written, with respect to any property.

8. All purchased property shall be removed from the premises at which the sale is conducted by the date(s) and time(s) set forth in the "Buyer's Guide" portion of the catalog. If not so removed, daily storage fees will be payable to us by the purchaser as set forth therein. We reserve the right to transfer property not so removed to an offsite warehouse at the purchaser's risk and expense, as set forth in more detail in the "Buyer's Guide." Accounts must be settled in full before property will be released. Packing and handling of purchased lots are the responsibility of the purchaser. Bonhams can provide packing and shipping services for certain items as noted in the "Buyer's Guide" section of the catalog.

9. The copyright in the text of the catalog and the photographs, digital images and illustrations of lots in the catalog belong to Bonhams or its licensors. You will not reproduce or permit anyone else to reproduce such text, photographs, digital images or illustrations without our prior written consent.

10. These Conditions of Sale shall bind the successors and assigns of all bidders and purchasers and inure to the benefit of our successors and assigns. No waiver, amendment or modification of the terms hereof (other than posted notices or oral announcements during the sale) shall bind us unless specifically stated in writing and signed by us. If any part of these Conditions of Sale is for any reason invalid or unenforceable, the rest shall remain valid and enforceable.

11. These Conditions of Sale and the purchaser's and our respective rights and obligations hereunder are governed by the laws of the State of California. By bidding at an auction, each purchaser and bidder agrees to be bound by these Conditions of Sale. Any dispute, controversy or claim arising out of or relating to this agreement, or the breach, termination or validity thereof, brought by or against Bonhams (but not including claims brought against the consignor by the purchaser of lots consigned hereunder) shall be resolved by the procedures set forth below.

### MEDIATION AND ARBITRATION PROCEDURES

(a) Within 30 days of written notice that there is a dispute, the parties or their authorized and empowered representatives shall meet by telephone and/or in person to mediate their differences. If the parties agree, a mutually acceptable mediator shall be selected and the parties will equally share such mediator's fees. The mediator shall be a retired judge or an attorney familiar with commercial law and trained in or qualified by experience in handling mediations. Any communications made during the mediation process shall not be admissible in any subsequent arbitration, mediation or judicial proceeding. All proceedings and any resolutions thereof shall be confidential, and the terms governing arbitration set forth in paragraph (c) below shall govern.

(b) If mediation does not resolve all disputes between the parties, or in any event no longer than 60 days after receipt of the written notice of dispute referred to above, the parties shall submit the dispute for binding arbitration before a single neutral arbitrator. Such arbitrator shall be a retired judge or an attorney familiar with commercial law and trained in or qualified by experience in handling arbitrations. Such arbitrator shall make all appropriate disclosures required by law. The arbitrator shall be drawn from a panel of a national arbitration service agreed to by the parties, and shall be selected as follows: (i) If the national arbitration service has specific rules or procedures, those rules or procedures shall be followed; (ii) If the national arbitration service does not have rules or procedures for the selection of an arbitrator, the arbitrator shall be an individual jointly agreed to by the parties. If the parties cannot agree on a national arbitration service, the arbitration shall be conducted by the American Arbitration Association, and the arbitrator shall be selected in accordance with the Rules of the American Arbitration Association. The arbitrator's award shall be in writing and shall set forth findings of fact and legal conclusions.

(c) Unless otherwise agreed to by the parties or provided by the published rules of the national arbitration service:

(i) the arbitration shall occur within 60 days following the selection of the arbitrator;



(ii) the arbitration shall be conducted in the designated location, as follows: (A) in any case in which the subject auction by Bonhams took place or was scheduled to take place in the State of New York or Connecticut or the Commonwealth of Massachusetts, the arbitration shall take place in New York City, New York; (B) in all other cases, the arbitration shall take place in the city of San Francisco, California; and

(iii) discovery and the procedure for the arbitration shall be as follows:

- (A) All arbitration proceedings shall be confidential;
- (B) The parties shall submit written briefs to the arbitrator no later than 15 days before the arbitration commences;
- (C) Discovery, if any, shall be limited as follows: (I) Requests for no more than 10 categories of documents, to be provided to the requesting party within 14 days of written request therefor; (II) No more than two (2) depositions per party, provided however, the deposition(s) are to be completed within one (1) day; (III) Compliance with the above shall be enforced by the arbitrator in accordance with California law;
- (D) Each party shall have no longer than eight (8) hours to present its position. The entire hearing before the arbitrator shall not take longer than three (3) consecutive days;
- (E) The award shall be made in writing no more than 30 days following the end of the proceeding. Judgment upon the award rendered by the arbitrator may be entered by any court having jurisdiction thereof.

To the fullest extent permitted by law, and except as required by applicable arbitration rules, each party shall bear its own attorneys' fees and costs in connection with the proceedings and shall share equally the fees and expenses of the arbitrator.

**LIMITED RIGHT OF RESCISSION**

If within one (1) year from the date of sale, the original purchaser (a) gives written notice to us alleging that the identification of Authorship (as defined below) of such lot as set forth in the **BOLD TYPE** heading of the catalog description of such lot (as amended by any saleroom notices or verbal announcements during the sale) is not substantially correct based on a fair reading of the catalog (including the terms of any glossary contained therein), and (b) within 10 days after such notice returns the lot to us in the same condition as at the time of sale, and (c) establishes the allegation in the notice to our satisfaction (including by providing one or more written opinions by recognized experts in the field, as we may reasonably require), then the sale of such lot will be rescinded and, unless we have already paid to the consignor monies owed him in connection with the sale, the original purchase price will be refunded.

If, prior to receiving such notice from the original purchaser alleging such defect, we have paid the consignor monies owed him in connection with the sale, we shall pay the original purchaser the amount of our commissions, any other sale proceeds to which we are entitled and applicable taxes received from the purchaser on the sale and make demand on the consignor to pay the balance of the original purchase price to the original purchaser. Should the consignor fail to pay such amount promptly, we may disclose the identity of the consignor and assign to the original purchaser our rights against the consignor with respect to the lot the sale of which is sought to be rescinded. Upon such disclosure and assignment, any liability of Bonhams as consignor's agent with respect to said lot shall automatically terminate.

The foregoing limited right of rescission is available to the original purchaser only and may not be assigned to or relied upon by any subsequent transferee of the property sold. The purchaser hereby accepts the benefit of the consignor's warranty of title and other representations and warranties made by the consignor for the purchaser's benefit. Nothing in this section shall be construed as an admission by us of any representation of fact, express or implied, obligation or responsibility with respect to any lot. **THE PURCHASER'S SOLE AND EXCLUSIVE REMEDY AGAINST BONHAMS FOR ANY**

REASON WHATSOEVER IS THE LIMITED RIGHT OF RESCISSION DESCRIBED IN THIS SECTION.

"Authorship" means only the identity of the creator, the period, culture and source or origin of the lot, as the case may be, as set forth in the **BOLD TYPE** heading of the print catalog entry. The right of rescission does not extend to: (a) works of art executed before 1870 (unless these works are determined to be counterfeits created since 1870), as this is a matter of current scholarly opinion which can change; (b) titles, descriptions, or other identification of offered lots, which information normally appears in lower case type below the **BOLD TYPE** heading identifying the Authorship; (c) Authorship of any lot where it was specifically mentioned that there exists a conflict of specialist or scholarly opinion regarding the Authorship of the lot at the time of sale; (d) Authorship of any lot which as of the date of sale was in accordance with the then generally-accepted opinion of scholars and specialists regarding the same; or (e) the identification of periods or dates of creation in catalog descriptions which may be proven inaccurate by means of scientific processes that are not generally accepted for use until after publication of the catalog in which the property is offered or that were unreasonably expensive or impractical to use at the time of such publication.

**LIMITATION OF LIABILITY**

EXCEPT AS EXPRESSLY PROVIDED ABOVE, ALL PROPERTY IS SOLD "AS IS." NEITHER BONHAMS NOR THE CONSIGNOR MAKES ANY REPRESENTATION OR WARRANTY, EXPRESS OR IMPLIED, AS TO THE MERCHANTABILITY, FITNESS OR CONDITION OF THE PROPERTY OR AS TO THE CORRECTNESS OF DESCRIPTION, GENUINENESS, ATTRIBUTION, PROVENANCE OR PERIOD OF THE PROPERTY OR AS TO WHETHER THE PURCHASER ACQUIRES ANY COPYRIGHTS OR OTHER INTELLECTUAL PROPERTY RIGHTS IN LOTS SOLD OR AS TO WHETHER A WORK OF ART IS SUBJECT TO THE ARTIST'S MORAL RIGHTS OR OTHER RESIDUAL RIGHTS OF THE ARTIST. THE PURCHASER EXPRESSLY ACKNOWLEDGES AND AGREES THAT IN NO EVENT SHALL BONHAMS BE LIABLE FOR ANY DAMAGES INCLUDING, WITHOUT LIMITATION, ANY COMPENSATORY, INCIDENTAL OR CONSEQUENTIAL DAMAGES.

**SELLER'S GUIDE**

**SELLING AT AUCTION**

Bonhams can help you every step of the way when you are ready to sell art, antiques and collectible items at auction. Our regional offices and representatives throughout the US are available to service all of your needs. Should you have any further questions, please visit our website at [www.bonhams.com/us](http://www.bonhams.com/us) for more information or call our Client Services Department at +1 (800) 223 2854 ext. 23550.

**AUCTION ESTIMATES**

The first step in the auction process is to determine the auction value of your property. Bonhams' world-renowned specialists will evaluate your special items at no charge and in complete confidence. You can obtain an auction estimate in many ways:

- Attend one of our Auction Appraisal Events held regularly at our galleries and in other major metropolitan areas. The updated schedule for Bonhams Auction Appraisal Events is available at [www.bonhams.com/us](http://www.bonhams.com/us).
- Call our Client Services Department to schedule a private appointment at one of our galleries. If you have a large collection, our specialists can travel, by appointment, to evaluate your property on site.
- Send clear photographs to us of each individual item, including item dimensions and other pertinent information with each picture. Photos should be sent to Bonhams' address in envelopes marked

as "photo auction estimate". Alternatively, you can submit your request using our online form at [www.bonhams.com/us](http://www.bonhams.com/us). Digital images may be attached to the form. Please limit your images to no more than five (5) per item.

**CONSIGNING YOUR PROPERTY**

After you receive an estimate, you may consign your property to us for sale in the next appropriate auction. Our staff assists you throughout the process, arranging transportation of your items to our galleries (at the consignor's expense), providing a detailed inventory of your consignment, and reporting the prices realized for each lot. We provide secure storage for your property in our warehouses and all items are insured throughout the auction process. You will receive payment for your property approximately 35 days after completion of sale.

Sales commissions vary with the potential auction value of the property and the particular auction in which the property is offered. Please call us for commission rates.

**PROFESSIONAL APPRAISAL SERVICES**

Bonhams' specialists conduct insurance and fair market value appraisals for private collectors, corporations, museums, fiduciaries and government entities on a daily basis. Insurance appraisals, used for insurance purposes, reflect the cost of replacing property in today's retail market. Fair market value appraisals are used for estate,

tax and family division purposes and reflect prices paid by a willing buyer to a willing seller.

When we conduct a private appraisal, our specialists will prepare a thorough inventory listing of all your appraised property by category. Valuations, complete descriptions and locations of items are included in the documentation.

Appraisal fees vary according to the nature of the collection, the amount of work involved, the travel distance, and whether the property is subsequently consigned for auction.

Our appraisers are available to help you anywhere and at any time. Please call our Client Services Department to schedule an appraisal.

**ESTATE SERVICES**

Since 1865, Bonhams has been serving the needs of fiduciaries – lawyers, trust officers, accountants and executors – in the disposition of large and small estates. Our services are specially designed to aid in the efficient appraisal and disposition of fine art, antiques, jewelry, and collectibles. We offer a full range of estate services, ranging from flexible financial terms to tailored accounting for heirs and their agents to world-class marketing and sales support.

For more information or to obtain a detailed Trust and Estates package, please visit our website at [www.bonhams.com/us](http://www.bonhams.com/us) or contact our Client Services Department.



# BUYER'S GUIDE

## BIDDING & BUYING AT AUCTION

Whether you are an experienced bidder or an enthusiastic novice, auctions provide a stimulating atmosphere unlike any other. Bonhams previews and sales are free and open to the public. As you will find in these directions, bidding and buying at auction is easy and exciting. Should you have any further questions, please visit our website at [www.bonhams.com](http://www.bonhams.com) or call our Client Services Department at +1 (800) 223 2854 ext. 3550.

### Catalogs

Before each auction we publish illustrated catalogs. Our catalogs provide descriptions and estimated values for each "lot." A lot may refer to a single item or to a group of items auctioned together. The catalogs also include the dates and the times for the previews and auctions. We offer our catalogs by subscription or by single copy. For information on subscribing to our catalogs, you may refer to the subscription form in this catalog, call our Client Services Department, or visit our website at [www.bonhams.com/us](http://www.bonhams.com/us).

### Previews

Auction previews are your chance to inspect each lot prior to the auction. We encourage you to look closely and examine each object on which you may want to bid so that you will know as much as possible about it. Except as expressly set forth in the Conditions of Sale, items are sold "as is" and with all faults; illustrations in our catalogs, website and other materials are provided for identification only. At the previews, our staff is always available to answer your questions and guide you through the auction process. Condition reports may be available upon request.

### Estimates

Bonhams catalogs include low and high value estimates for each lot, exclusive of the buyer's premium and tax. The estimates are provided as an approximate guide to current market value based primarily on previous auction results for comparable pieces, and should not be interpreted as a representation or prediction of actual selling prices. They are determined well in advance of a sale and are subject to revision. Please contact us should you have any questions about value estimates.

### Reserves

Unless indicated by the  $\rho$  symbol next to the lot number, which denotes no reserve, all lots in the catalog are subject to a reserve. The reserve is the minimum auction price that the consignor is willing to accept for a lot. This amount is confidential and does not exceed the low estimate value.

### Auction House's Interest in Property Offered at Auction

On occasion, Bonhams may offer property in which it has an ownership interest in whole or in part or otherwise has an economic interest. Such property, if any, is identified in the catalog with a  $\blacktriangle$  symbol next to the lot number(s).

Bonhams may also offer property for a consignor that has been guaranteed a minimum price for its property by Bonhams or jointly by Bonhams and a third party. Bonhams and any third parties providing a guarantee may benefit financially if the guaranteed property is sold successfully and may incur a financial loss if its sale is not successful. Such property, if any, is identified in the catalog with a  $\circ$  symbol next to the lot number(s).

### Bidding at Auction

At Bonhams, you can bid in many ways: in person, via absentee bid, over the phone, or via Bonhams' live online bidding facility. Absentee bids can be submitted in person, online, via fax or via email.

Valid Bonhams client accounts are required to participate in bidding activity. You can obtain registration information online, at the reception desk or by calling our Client Services Department.

By bidding at auction, whether in person or by agent, by absentee bid, telephone, online or other means, the buyer or bidder agrees to be bound by the Conditions of Sale.

Lots are auctioned in consecutive numerical order as they appear in the catalog. Bidding normally begins below the low estimate. The auctioneer will accept bids from interested parties present in the saleroom, from telephone bidders, and from absentee bidders who have left written bids in advance of the sale. The auctioneer may also execute bids on behalf of the consignor by placing responsive or consecutive bids for a lot up to the amount of the reserve, but never above it.

We assume no responsibility for failure to execute bids for any reason whatsoever.

### In Person

If you are planning to bid at auction for the first time, you will need to register at the reception desk in order to receive a numbered bid card. To place a bid, hold up your card so that the auctioneer can clearly see it. Decide on the maximum auction price that you wish to pay, exclusive of buyer's premium and tax, and continue bidding until your bid prevails or you reach your limit. If you are the successful bidder on a lot, the auctioneer will acknowledge your paddle number and bid amount.

### Absentee Bids

As a service to those wishing to place bids, we may at our discretion accept bids without charge in advance of auction online or in writing on bidding forms available from us. "Buy" bids will not be accepted; all bids must state the highest bid price the bidder is willing to pay. Our auction staff will try to bid just as you would, with the goal of obtaining the item at the lowest bid price possible. In the event identical bids are submitted, the earliest bid submitted will take precedence. Absentee bids shall be executed in competition with other absentee bids, any applicable reserve, and bids from other auction participants. A friend or agent may place bids on your behalf, provided that we have received your written authorization prior to the sale. Absentee bid forms are available in our catalogs, online at [www.bonhams.com/us](http://www.bonhams.com/us), at offsite auction locations, and at our San Francisco, Los Angeles and New York galleries.

### By Telephone

Under special circumstances, we can arrange for you to bid by telephone. To arrange for a telephone bid, please contact our Client Services Department a minimum of 24 hours prior to the sale.

### Online

We offer live online bidding for most auctions and accept absentee bids online for all our auctions. Please visit [www.bonhams.com/us](http://www.bonhams.com/us) for details.

### Bid Increments

Bonhams generally uses the following increment multiples as bidding progresses:

\$50-200 .....	by \$10s
\$200-500 .....	by \$20/50/80s
\$500-1,000 .....	by \$50s
\$1,000-2,000 .....	by \$100s
\$2,000-5,000 .....	by \$200/500/800s
\$5,000-10,000 .....	by \$500s
\$10,000-20,000 .....	by \$1,000s
\$20,000-50,000 .....	by \$2,000/5,000/8,000s
\$50,000-100,000 .....	by \$5,000s
\$100,000-200,000 .....	by \$10,000s
above \$200,000 .....	at auctioneer's discretion

**The auctioneer may split or reject any bid at any time at his or her discretion as outlined in the Conditions of Sale.**

### Currency Converter

Solely for the convenience of bidders, a currency converter may be provided at Bonhams' auctions. The rates quoted for conversion of other currencies to U.S. Dollars are indications only and should not be relied upon by a bidder, and neither Bonhams nor its agents shall be responsible for any errors or omissions in the operation or accuracy of the currency converter.

### Buyer's Premium

A buyer's premium is added to the winning bid price of each individual lot purchased, at the rates set forth in the Conditions of Sale. The winning bid price plus the premium constitute the purchase price for the lot. Applicable sales taxes are computed based on this figure, and the total becomes your final purchase price.

Unless specifically illustrated and noted, fine art frames are not included in the estimate or purchase price. Bonhams accepts no liability for damage or loss to frames during storage or shipment.

All sales are final and subject to the Conditions of Sale found in our catalogs, on our website, and available at the reception desk.

### Payment

All buyers are asked to pay and pick up by 3pm on the business day following the auction. Payment may be made to Bonhams by cash, checks drawn on a U.S. bank, money order, wire transfer, or by Visa, MasterCard, American Express or Discover credit or charge card or debit card. All items must be paid for within 5 business days of the sale. Please note that payment by personal or business check may result in property not being released until purchase funds clear our bank. For payments sent by mail, please remit to Cashier Department, 220 San Bruno Avenue, San Francisco, CA 94103.

### Sales Tax

California, Arizona, Colorado, Connecticut, Florida, Georgia, Illinois, Nevada, New York, Massachusetts, Pennsylvania, Texas, Washington state and Washington DC residents must pay applicable sales tax. Other state or local taxes (or compensating use taxes) may apply. Sales tax will be automatically added to the invoice unless a valid resale number has been furnished or the property is shipped via common carrier to destinations outside the states listed above.

### Shipping & Removal

Bonhams can accommodate shipping for certain items. Please contact our Cashiers Department for more information or to obtain a quote. Carriers are not permitted to deliver to PO boxes.

International buyers are responsible for all import/export customs duties and taxes. An invoice stating the actual purchase price will accompany all international purchases.

### Collection of Purchases

Please arrange for the packing and transport of your purchases prior to collection at our office. If you are sending a third party shipper, please request a release form from us and return it to +1 (212) 644 9009 prior to your scheduled pickup. To schedule collection of purchases, please call +1 (212) 644 9001.

### Handling and Storage Charges

Please note that our offices have requirements for freight elevator usage. Please contact us to schedule an elevator appointment for pickup of any large or awkward items. Bonhams will hold all purchased lots in our gallery until June 15 without penalty. After June 15 collection of lots will be by appointment only. Please call +1 (212) 644 9001 at least 24 hours in advance to make an appointment.

Storage charges of \$5 per lot, per day will begin accruing for any lots not collected by the 31st day after the auction. Bonhams reserves the right to remove uncollected sold lots to the warehouse of our choice at the buyer's risk and expense. Handling and storage fees will apply.

### Auction Results

To find out the final purchase price for any lot following the sale, please call our automated auction results line at +1 (800) 223 2854 ext. 3400. All you need is a touch-tone telephone and the lot number. Auction results are usually available on the next business day following the sale or online at [www.bonhams.com/us](http://www.bonhams.com/us).

## IMPORTANT NOTICES

### WATCHES

Except as expressly set forth in the Conditions of Sale, all watches are sold "as is." Please examine all watches carefully. It is the responsibility of the prospective bidder or the bidder's agent to determine the condition of watches during the preview.

Although we endeavor to mention in our descriptions significant defects, needed repairs, absent stones and the like, **WE DO NOT GUARANTEE THAT THE DESCRIPTIONS ARE COMPREHENSIVE.** We do not warrant any watch to be in good working order or warrant the accuracy of any watch function such as timekeeping, chronograph, calendar, repeating or register. Any repairs that might be required are the responsibility of the purchaser.

Condition reports, which contain more information than the catalog descriptions, are available upon request. These reports are statements of opinion based on visual inspection and may not include all defects or replacements or those that would be revealed by disassembly of the watch. To ensure timely receipt of the report, please email your request at least two

days prior to the sale date. Condition reports may also be viewed at the watch counter during previews.

Please note that Bonhams does not warrant that any component watch part is original or that watch cases have not been altered or replaced, as virtually all pre-owned watches may have been previously repaired and could include replacement parts. A manufacturer's certificate of authenticity is not available unless described in the catalog description of a lot, and a manufacturer's refusal to service or repair a timepiece due to the presence of replacement parts shall not constitute grounds to rescind a sale.

Case screw-backs have been loosened for examination and viewing by Bonhams, and should be resealed by purchasers for water resistance.

The dimensions given refer to the diameter of circular watch cases, excluding the lugs (in the case of a wristwatch) or the pendant (in the case of a pocket watch). For watches of other shapes, the corresponding width is given.

### DIAMONDS, COLORED STONES & PEARLS

The Jewelry department of Bonhams & Butterfields recognizes that there are many various forms of treatments and enhancements used in diamonds and colored stones in order to improve their appearance and or color. Techniques such as heat treatment have been used to improve the color and transparency of both sapphires and rubies in addition to other gemstones. Techniques such as oiling have been used to enhance the clarity of emeralds while dying has been used to effect the color of jade. Techniques such as heat treatment, oiling, resin impregnation, irradiation, color diffusion, dying and HTHP are just a few of the techniques that are in use today. Prospective buyers are therefore reminded that unless otherwise noted in our catalog description it must be assumed that some form of enhancement may have been used and that such treatment may not always be permanent or detectable and that our estimates have taken such possibilities into account. As a matter of policy, Bonhams & Butterfields endeavors to obtain certificates from recognized gemological laboratories when such certificates are deemed crucial to the authenticity of a gemstone. It is not possible however to gain certificates for all items offered for sale and it is therefore recommended where there is no mention of a certificate that all prospective buyers consult with one of our department specialists prior to purchase of such items.

PLEASE NOTE: A number of laboratories issue certificates that give more detailed descriptions of gemstones, however there may not be consensus between different laboratories on the degrees, or types of treatment for any particular gemstone. Neither is there necessarily consensus between different laboratories, or private appraisers, on the grading of diamonds. All gemstone weights are approximations only and although an independent laboratory grading may be used in the catalog text, we cannot guarantee such gradings.

Images shown may appear smaller or larger than actual size.

Although we endeavor to mention in our descriptions significant defects, needed repairs, absent stones and the like, **WE DO NOT GUARANTEE THAT THE DESCRIPTIONS ARE COMPREHENSIVE.** Please examine all lots carefully. It is the responsibility of the prospective bidder, or his agent, to determine the condition of lots during the preview. Condition reports have been created for most lots in this auction, and are available upon request. Please contact the Jewelry department at least two days prior to the sale date for additional information.

## CONTACTS

### OFFICERS

Laura King Pfaff  
Chairman

Matthew Girling  
Chief Executive Officer

Leslie Wright  
Vice President, Trusts and Estates

Jon King  
Vice President, Business Development

Vice Presidents, Specialists

Susan F. Abeles

Rupert Banner

Gary Espinosa

Judith Eurich

Alan Fausel

Mark Fisher

Martin Gammon

Dessa Goddard

Jim Haas

Scot Levitt

Mark Osborne

Hadji Rahimpour

Brooke Sivo

Catherine Williamson

### REPRESENTATIVES

#### Arizona

Terri Adrian-Hardy, (480) 994 5362

#### California - Central Valley

David Daniel, (916) 364 1645

#### California - Palm Springs

Brooke Sivo, (760) 350 4255

#### Colorado - Denver

Julie Segraves, (720) 355 3737 †

#### District of Columbia/Mid-Atlantic

Martin Gammon, (202) 333 1696

#### Florida

Jon King

(561) 651 7876, Palm Beach

(305) 228 6600, Miami

(954) 566 1630, Ft. Lauderdale

#### Georgia

Mary Moore Bethea, (404) 842 1500

#### Illinois

Ricki Harris

(773) 267 3300, (773) 680 2881

#### Massachusetts/Boston/New England

Amy Corcoran, (617) 742 0909

#### Nevada

David Daniel, (775) 831 0330

#### New Mexico

Michael Bartlett, (505) 820 0701

#### Oregon and Idaho

Sheryl Acheson, (503) 312 6023

#### Texas

Amy Lawch, (202) 333 1696

#### Virginia

Gertraud Hechl, (713) 621 5988

#### Washington

Heather O'Mahony, (206) 218 5011

#### Canada

##### Toronto, Ontario

Jack Kerr-Wilson, (416) 462 9004

##### Montreal, Quebec

David Kelsey, (514) 894 1138 †

### BONHAMS \*

#### NEW YORK DEPARTMENTS

580 Madison Avenue  
New York, New York 10022  
(212) 644 9001

#### Books & Manuscripts

Christina Geiger, (212) 644 9094

Cassandra Hatton, (212) 461 6531

Brian Kalkbrenner, (917) 206 1625

#### Chinese Works of Art & Paintings

Bruce MacLaren, (917) 206 1677

#### Collectors' Motorcars & Motorcycles

Rupert Banner, (212) 461 6515

Eric Minoff, (917) 206 1630

Evan Ide

#### Fine Art

##### American

Alan Fausel, (212) 644 9039

Kayla Carlsen, (917) 206 1699

##### Contemporary

Jeremy Goldsmith, (917) 206 1656

##### European Paintings

Madalina Lazen, (212) 644 9108

##### Impressionist & Modern

William O'Reilly, (212) 644 9135

#### History of Science

Cassandra Hatton, (212) 461-6531

#### Himalayan Art

Mark Rasmussen, (917) 206 1688

Edward Wilkinson, (917) 206 1688

#### Japanese Works of Art

Jeff Olson, (212) 461 6516

#### Jewelry

Susan F. Abeles, (212) 461 6525

Caroline Morrissey, (212) 644 9046

#### Maritime Paintings & Works of Art

Gregg Dietrich, (212) 644 9001 †

#### Photographs & Prints

Shawna Brickley, (917) 206 1690

#### Russian Fine & Decorative Arts

Yelena Harbick, (212) 644 9136

#### Space History

Cassandra Hatton, (212) 461 6531

#### Trusts & Estates

Sherri Cohen, (917) 206 1671

#### Watches & Clocks

Jonathan Snellenburg, (212) 461 6530

#### Wine & Whisky

Gary D'Urso, (917) 206 1653

### CLIENT SERVICES DEPARTMENT

#### San Francisco

(415) 861 7500

(415) 861 8951 fax

#### Los Angeles

(323) 850 7500

(323) 850 6090 fax

Monday - Friday, 8.30am to 5pm

### BONHAMS \*

#### SAN FRANCISCO DEPARTMENTS

220 San Bruno Avenue  
San Francisco California 94103  
(800) 223 2854

#### 20th Century Fine Art

Sarah Nelson, ext. 23311

#### Arms & Armor

Paul Carella, ext. 23360

James Ferrell, ext. 23332

#### Asian Works of Art

Dessa Goddard, ext. 23333

#### Books & Manuscripts

Adam Stackhouse, ext. 23266

#### Decorative Arts

Jennifer Kurtz, ext. 65478

#### Furniture & Decorative Arts, European

Andrew Jones, ext. 65432

#### Jewelry & Watches

Shannon Beck, ext. 23306

#### Collectors' Motorcars & Motorcycles

Mark Osborne, ext. 23353

Jakob Greisen, ext. 23284

#### Museum Services

Laura King Pfaff, ext. 23210

#### Native American Art

Jim Haas, ext. 23294

#### California & Western Paintings & Sculpture

Aaron Bastian, ext. 23241

#### Photographs Prints

Judith Eurich, ext. 23259

#### Oriental Rugs & Carpets

Hadji Rahimpour, ext. 23392

#### Space History

Adam Stackhouse, ext. 23266

#### Trusts & Estates

Victoria Richardson, ext. 23207

#### Wine

Doug Davidson, ext. 23363

#### Writing Instruments

Ivan Briggs, ext. 23255

### BONHAMS \*

#### LOS ANGELES DEPARTMENTS

7601 W. Sunset Boulevard  
Los Angeles California 90046  
(800) 223 2854

#### 20th Century Decorative Arts

Angela Past, ext. 65422

Daniel Tolson, ext. 65405

#### 20th Century Fine Art

Alexis Chompaisal, ext. 65469

#### African, Oceanic & Pre-Columbian Art

Fredric W. Backlar, ext. 65416 †

#### Books & Manuscripts

Catherine Williamson, ext. 65442

#### Coins & Banknotes

Paul Song, ext. 65455

#### Entertainment Memorabilia

Lucy Carr, ext. 65467

Dana Hawkes, (978) 283 1518

#### Furniture & Decorative Arts

Andrew Jones, ext. 65432

#### Furniture & Decorative Arts, American

Brooke Sivo, ext. 65420

#### Jewelry & Watches

Dana Ehrman, ext. 65407

Claire De Biasio-Paris, ext. 65483

#### Collectors' Motorcars & Motorcycles

Nick Smith, ext. 65470

#### Contemporary Art

Dane Jensen, ext. 65451

#### Photographs

##### Prints

Morisa Rosenberg, ext. 65435

#### Natural History

Thomas E. Lindgren, ext. 65437 †

Claudia Florian, G.J.G., ext. 65437 †

#### California & Western Paintings & Sculpture

Scot Levitt, ext. 65425

#### Paintings - European

Mark Fisher, ext. 65488

#### Silver

Aileen Ward, ext 65463

#### Trusts & Estates

Leslie Wright, ext. 65408

Joseph Francaviglia, ext. 65443

\* Indicates saleroom

† Indicates independent contractor

The following information is recorded and available 24 hours a day, 7 days a week, through our telephone system:

- Auction and Preview Information
- Directions to Bonhams's salesrooms
- Automated Auction Results



# Auction Registration Form

(Attendee / Absentee / Online / Telephone Bidding)

Please circle your bidding method above.

--	--	--	--

**Paddle number (for office use only)**

**General Notice:** This sale will be conducted in accordance with Bonhams Conditions of Sale, and your bidding and buying at the sale will be governed by such terms and conditions. Please read the Conditions of Sale in conjunction with the Buyer's Guide relating to this sale and other published notices and terms relating to bidding. Payment by personal or business check may result in your property not being released until purchase funds clear our bank. Checks must be drawn on a U.S. bank.

**Notice to Absentee Bidders:** In the table below, please provide details of the lots on which you wish to place bids at least 24 hours prior to the sale. Bids will be rounded down to the nearest increment. Please refer to the Buyer's Guide in the catalog for further information relating to instructions to Bonhams to execute absentee bids on your behalf. Bonhams will endeavor to execute bids on your behalf but will not be liable for any errors or non-executed bids.

**Notice to First Time Bidders:** New clients are requested to provide photographic proof of ID - passport, driving license, ID card, together with proof of address - utility bill, bank or credit card statement etc. Corporate clients should also provide a copy of their articles of association / company registration documents, together with a letter authorizing the individual to bid on the company's behalf. Failure to provide this may result in your bids not being processed. For higher value lots you may also be asked to provide a bankers reference.

**Notice to online bidders;** If you have forgotten your username and password for [www.bonhams.com](http://www.bonhams.com), please contact Client Services.

**If successful**

- I will collect the purchases myself
- Please contact me with a shipping quote (if applicable)
- I will arrange a third party to collect my purchase(s)

**Please mail or fax the completed Registration Form and requested information to:**

Bonhams Client Services Department  
 580 Madison Avenue  
 New York, New York 10022  
 Tel +1 (212) 644 9001  
 Fax +1 (212) 644 9009  
 Automated Auction Results  
 Tel +1 (415) 503 3410

# Bonhams

Sale title:		Sale date:	
Sale no.		Sale venue:	
<b>General Bid Increments:</b>			
\$10 - 200 .....by 10s		\$10,000 - 20,000 .....by 1,000s	
\$200 - 500 .....by 20 / 50 / 80s		\$20,000 - 50,000 .....by 2,000 / 5,000 / 8,000s	
\$500 - 1,000 .....by 50s		\$50,000 - 100,000 .....by 5,000s	
\$1,000 - 2,000 .....by 100s		\$100,000 - 200,000 .....by 10,000s	
\$2,000 - 5,000 .....by 200 / 500 / 800s		above \$200,000 .....at the auctioneer's discretion	
\$5,000 - 10,000 .....by 500s		The auctioneer has discretion to split any bid at any time.	
Customer Number		Title	
First Name		Last Name	
Company name (to be invoiced if applicable)			
Address			
City		County / State	
Post / Zip code		Country	
Telephone mobile		Telephone daytime	
Telephone evening		Fax	
Telephone bidders: indicate primary and secondary contact numbers by writing ① or ② next to the telephone number.			
E-mail (in capitals) _____			
By providing your email address above, you authorize Bonhams to send you marketing materials and news concerning Bonhams and partner organizations. Bonhams does not sell or trade email addresses.			
I am registering to bid as a private client <input type="checkbox"/>		I am registering to bid as a trade client <input type="checkbox"/>	
Resale: please enter your resale license number here _____ We may contact you for additional information.			

SHIPPING	
Shipping Address (if different than above):	
Address: _____	Country: _____
City: _____	Post/ZIP code: _____

**Please note that all telephone calls are recorded.**

Type of bid (A-Absentee, T-Telephone)	Lot no.	Brief description (In the event of any discrepancy, lot number and not lot description will govern.) If you are bidding online there is no need to complete this section.	MAX bid in US\$ (excluding premium and applicable tax) Emergency bid for telephone bidders only*

**You instruct us to execute each absentee bid up to the corresponding bid amount indicated above.**

\* Emergency Bid: A maximum bid (exclusive of Buyer's Premium and tax) to be executed by Bonhams only if we are unable to contact you by telephone or should the connection be lost during bidding.

BY SIGNING THIS FORM YOU AGREE THAT YOU HAVE READ AND UNDERSTAND OUR CONDITIONS OF SALE AND SHALL BE LEGALLY BOUND BY THEM, AND YOU AGREE TO PAY THE BUYER'S PREMIUM, ANY APPLICABLE TAXES, AND ANY OTHER CHARGES MENTIONED IN THE BUYER'S GUIDE OR CONDITIONS OF SALE. THIS AFFECTS YOUR LEGAL RIGHTS.	
Your signature:	Date:







EB 1793

**Bonhams**  
580 Madison Avenue  
New York  
NY 10022

+1 212 644 9001  
+1 212 644 9009 fax

