

# The ArtsQuest Center— Spillman Farmer Architects Silver Medal



Paul Warchol Photography, Inc.

# The ArtsQuest Center—Spillman Farmer Architects Silver Medal



Paul Warchol Photography, Inc.

# The ArtsQuest Center— Spillman Farmer Architects Silver Medal



Paul Warchol Photography, Inc.

The ArtsQuest Center– Spillman Farmer Architects  
Silver Medal



Paul Warchol Photography, Inc.

Owe'neh Bupingeh Preservation Project-Atkin Olshin Schade Architects

Silver Medal

Kate Russell Photography



Owe'neh Bupingeh Preservation Project- Atkin Olshin Schade Architects  
Silver Medal  
Kate Russell Photography



Owe'neh Bupingeh Preservation Project- Atkin Olshin Schade Architects  
Silver Medal  
Kate Russell Photography



# Owe'neh Bupingeh Preservation Project- Atkin Olshin Schade Architects

Silver Medal

Kate Russell Photography







**Penn State  
Hershey Cancer  
Institute**

**Payette**  
In associates with Array  
Healthcare Facilities  
Solutions

**Honor Award**

**Warren Jagger Photography**



**Penn State  
Hershey Cancer  
Institute**

**Payette**  
In associates with Array  
Healthcare Facilities  
Solutions

**Honor Award**

**Warren Jagger Photography**



**Penn State  
Hershey Cancer  
Institute**

**Payette**  
In associates with Array  
Healthcare Facilities  
Solutions

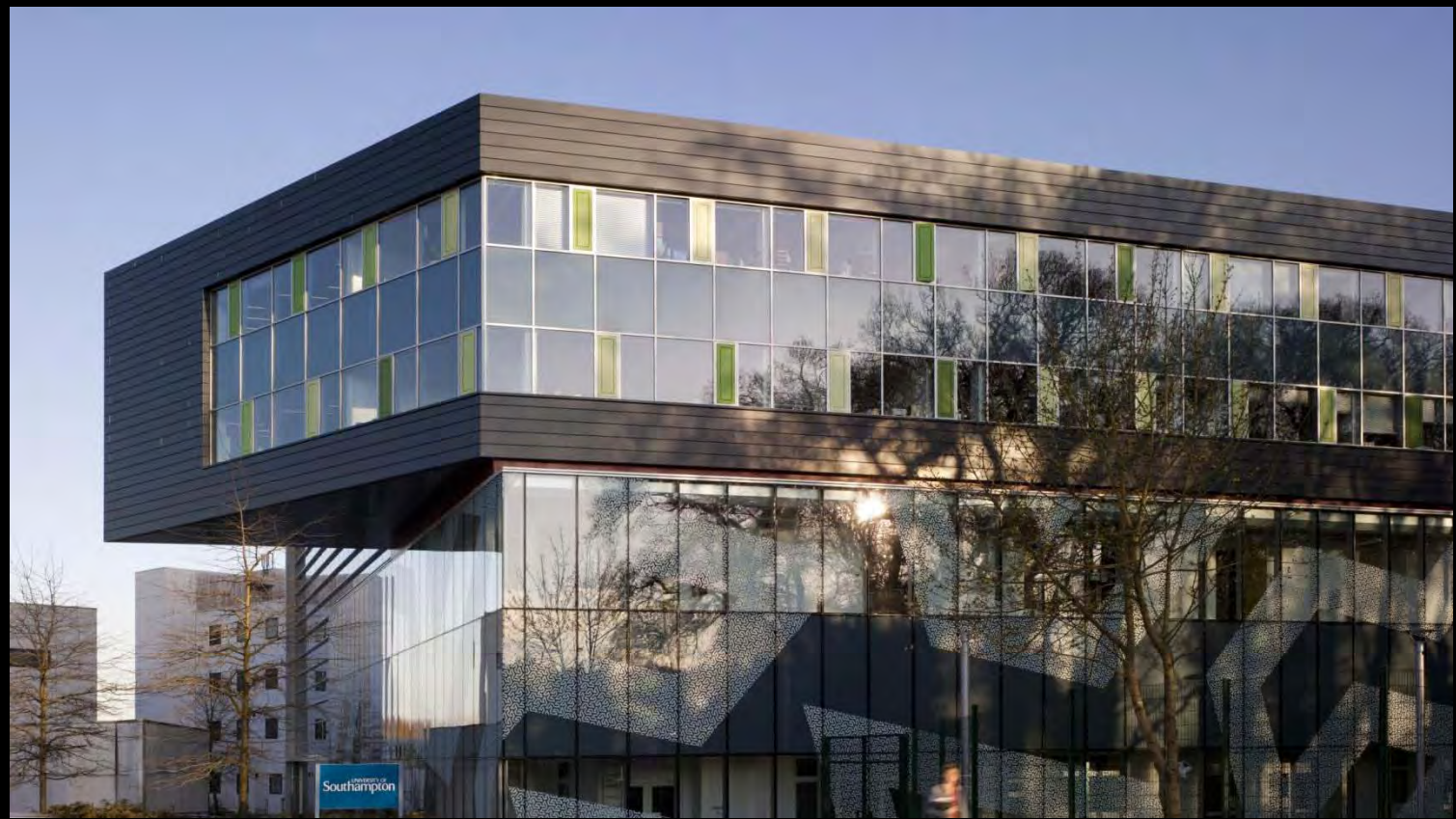
**Honor Award**



**Penn State  
Hershey Cancer  
Institute**

**Payette**  
In associates with Array  
Healthcare Facilities  
Solutions

**Honor Award**



Mountbatten Nanotechnology Electronics Research Complex—IDC Architects, PC  
Honor Award Peter Cook



Mountbatten Nanotechnology Electronics Research Complex—IDC Architects, PC  
Honor Award Peter Cook



Mountbatten Nanotechnology Electronics Research Complex—IDC Architects, PC  
Honor Award Peter Cook



Mountbatten Nanotechnology Electronics Research Complex—IDC Architects, PC  
Honor Award Peter Cook



Brockman Hall  
for Physics

Kieran Timberlake

Honor Award

OTTO and  
Hester + Hardaway

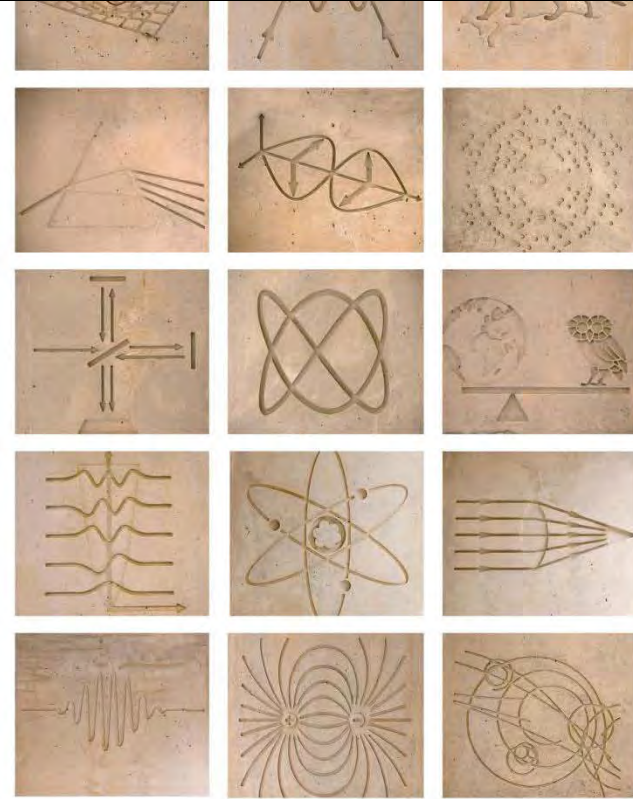


Brockman Hall  
for Physics

Kieran Timberlake

Honor Award

OTTO and  
Hester + Hardaway



ICONOGRAPHY

The concrete columns of the new entrance portal have symbols representing the classic theories of physics and astronomy cast into their surfaces, extending the tradition

Brockman Hall  
for Physics

Kieran Timberlake

Honor Award

OTTO and  
Hester + Hardaway



Brockman Hall  
for Physics

Kieran Timberlake

Honor Award

OTTO and  
Hester + Hardaway





renovated pool deck



original pool deck

School of  
Architecture,  
Phase II

hemmler +  
camayd architects

Honor Award



School of  
Architecture,  
Phase II

hemmler +  
camayd architects

Honor Award



view from office to open space & studio



original



in progress

School of  
Architecture,  
Phase II

hemmler +  
camayd architects

Honor Award



School of  
Architecture,  
Phase II

hemmler +  
camayd architects

Honor Award



Morse and Ezra Stiles Colleges, Yale University—Kieran Timberlake  
Honor Award Richard Barnes/OTTO and Peter Aaron/OTTO



Morse and Ezra Stiles Colleges, Yale University—Kieran Timberlake  
Honor Award Richard Barnes/OTTO and Peter Aaron/OTTO



SUNKEN COURTYARD

The design of this space was a true collaboration between architect, structural engineer and landscape architect. After the space was excavated, the below-grade condition of the wall was less than expected, so additional concrete forms and a system of wood screens were developed on the fly in Revit.

Morse and Ezra Stiles Colleges, Yale University—Kieran Timberlake  
Honor Award Richard Barnes/OTTO and Peter Aaron/OTTO



Morse and Ezra Stiles Colleges, Yale University—Kieran Timberlake  
Honor Award Richard Barnes/OTTO and Peter Aaron/OTTO



# Market Square Place, Millcraft Industries—Strada Honor Award Dennis Marsico



**Market Square Place, Millcraft Industries—Strada  
Honor Award Dennis Marsico**



**Market Square Place, Millcraft Industries—Strada  
Honor Award Dennis Marsico**



**Market Square Place, Millcraft Industries—Strada  
Honor Award Dennis Marsico**





Interior  
Rehabilitation &  
Renovation St.  
Thomas Aquinas  
Church

hemmler + camayd  
architects

Honor Award

Guy Cali Associates,  
Inc.



Interior  
Rehabilitation &  
Renovation St.  
Thomas Aquinas  
Church

hemmler + camayd  
architects

Honor Award

Guy Cali Associates,  
Inc.



Interior  
Rehabilitation &  
Renovation St.  
Thomas Aquinas  
Church

hemmler + camayd  
architects

Honor Award

Guy Cali Associates,  
Inc.



Interior  
Rehabilitation &  
Renovation St.  
Thomas Aquinas  
Church

hemmler + camayd  
architects

Honor Award

Guy Cali Associates,  
Inc.



*East Liberty Green Vision—Perkins Eastman  
Honor Award*



*Joey Kennedy Photography*

*East Liberty Green Vision—Perkins Eastman  
Honor Award*



*Joey Kennedy Photography*

*East Liberty Green Vision—Perkins Eastman*



*Honor Award      Joey Kennedy Photography*

*East Liberty Green Vision—Perkins Eastman  
Honor Award*



*Joey Kennedy Photography*



Dilworth Plaza  
Renovation

Kieran Timberlake

Honor Award



Dilworth Plaza  
Renovation

Kieran Timberlake

Honor Award  
Regional & Urban Design



Dilworth Plaza  
Renovation

Kieran Timberlake

Honor Award



SOUTH LAWN



Dilworth Plaza  
Renovation

Kieran Timberlake

Honor Award

# Design Guidelines for the City of New Orleans Historic District Landmarks Commission Preservation Design Partnership, LLC Honor Award



CITY OF NEW ORLEANS  
Historic District Landmarks Commission

## Design Guidelines

May 2011

Approved by City Council Resolution 11-1770

5 May 2011

Prepared for:

City of New Orleans  
**HISTORIC DISTRICT LANDMARKS COMMISSION**  
New Orleans, Louisiana

Prepared by:

Dominique M. Hawkins, AIA, LEED AP  
**PRESERVATION DESIGN PARTNERSHIP, LLC**  
Philadelphia, Pennsylvania

# Design Guidelines for the City of New Orleans Historic District Landmarks Commission

## Preservation Design Partnership, LLC

### Honor Award



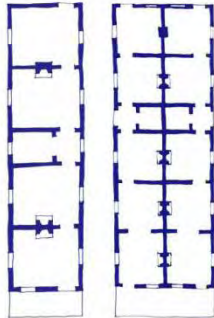
*This narrow single Shotgun includes a paired, shuttered, door and window with a front gabled roof and a hipped projecting overhang.*



*The form of this residence is typical of a double Shotgun with a central pair of windows flanked by entrance doors.*

#### SHOTGUN

(1830s-1950s)

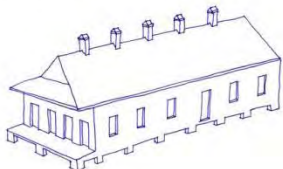
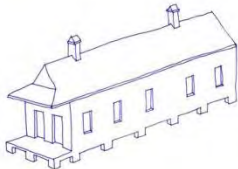


The earliest known examples of Shotgun type houses in New Orleans date at least to the 1830s. Shotgun houses bear a strong resemblance to Caribbean house types prevalent in the 18<sup>th</sup> century, and some historians suggest it may have been imported to New Orleans in the early 19<sup>th</sup> century. Whatever its origins, this highly efficient and comparatively inexpensive building type was so popular among both the middle and working classes for over a century that it is probably the most prevalent historic building type in the city.

The simplest Shotgun type house is the "single Shotgun," a long narrow structure 1 room wide and 3 to 5 rooms deep, with each room opening onto the next. In addition to the Shotgun single, the Shotgun type includes "Shotgun doubles," "Camelback Shotguns," "Sidehall Shotguns," and "Side Gallery Shotguns."

The typical Shotgun single façade consists of a door and window, usually shuttered, which may or may not feature a porch or deep overhang to offer protection from the weather. The typical Shotgun has a front gabled or hipped roof.

The Shotgun double is essentially a twinned single, a 2 unit residence with a symmetrical façade of two doors and windows, each unit 1 room wide and 3 to 5 rooms deep with no interior hallway. Shotgun doubles usually have a front roof



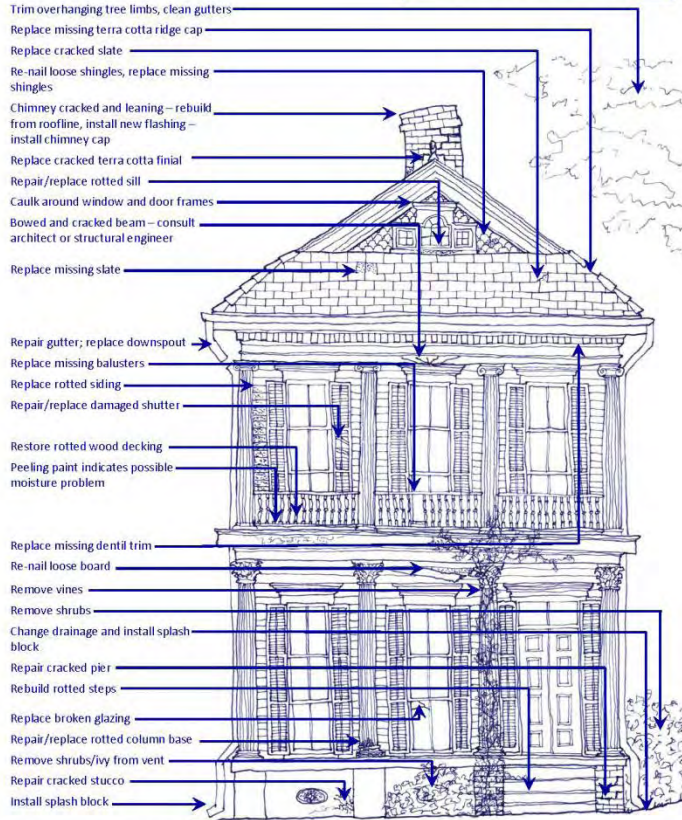
# Design Guidelines for the City of New Orleans Historic District Landmarks Commission

## Preservation Design Partnership, LLC

### Honor Award

#### TYPICAL BUILDING MAINTENANCE NEEDS

The applicant must obtain a Certificate of Appropriateness (CoFA) as well as all necessary permits prior to proceeding with any work.



# Design Guidelines for the City of New Orleans Historic District Landmarks Commission Preservation Design Partnership, LLC Honor Award



*This is an example of a new building in a commercial corridor that utilizes traditional siting, proportion, scale, form, materials, fenestration, roof configuration, details, finishes and landscaping.*

## NEW CONSTRUCTION GUIDE

### **THE HDLC REQUIRES:**

- The preservation of the cohesive ambiance of the local Historic District through compatible, sympathetic construction
- Compatible siting, proportion, scale, form, materials, fenestration, roof configuration, details and finishes
- Maintaining the appropriate historic contextual setting within the surrounding neighborhood
- Use of materials and techniques that are compatible with the surrounding neighborhood

### **THE HDLC RECOMMENDS:**

- Consultation with the HDLC Staff early in the planning stages of a new construction project
- Review of related sections of the *Design Guidelines* to better understand the historic context and appropriate design and materials of each District
- Identification, retention and preservation of all character defining features of the historic site

## New Construction Review

Construct a new primary building or structure  
HDLC Commission review.



**New construction should be compatible and sympathetic to the surrounding neighborhood.**



**The Salvation Army Ray and Joan Kroc Coprs Comminuty Center**  
**MGA Partners Architects in association with PZS Architects**  
**Citation of Merit      Halkin Photogrpahy LLC**



**The Salvation Army Ray and Joan Kroc Coprs Comminity Center**  
**MGA Partners Architects in association with PZS Architects**  
**Citation of Merit      Halkin Photography LLC**

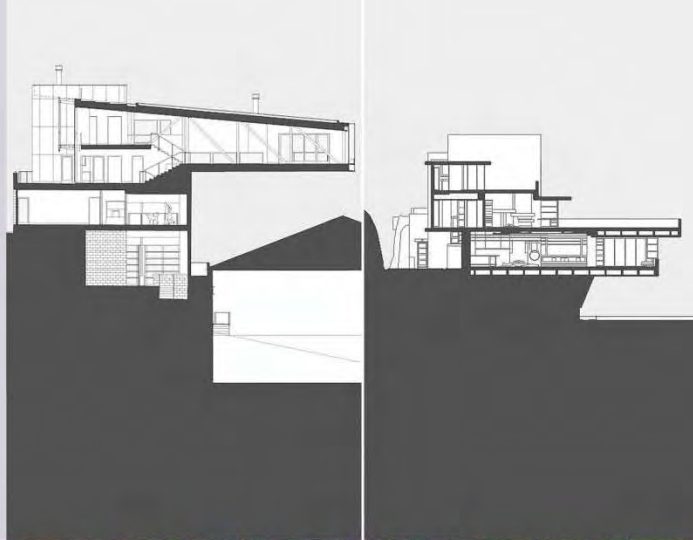


**The Salvation Army Ray and Joan Kroc Coprs Comminuty Center**  
**MGA Partners Architects in association with PZS Architects**  
**Citation of Merit      Halkin Photography LLC**



**The Salvation Army Ray and Joan Kroc Coprs Comminuty Center**  
**MGA Partners Architects in association with PZS Architects**  
**Citation of Merit      Halkin Photography LLC**





*The Emerald Art,  
Glass House*

*FISHER  
ARCHITECTURE*

*Citation of Merit*



*The Emerald Art,  
Glass House*

*FISHER  
ARCHitecture*

*Citation of Merit*



*The Emerald Art,  
Glass House*

*FISHER  
ARCHitecture*

*Citation of Merit*



*The Emerald Art,  
Glass House*

*FISHER  
ARCHITECTURE*

*Citation of Merit*



# Renovations to the Campus Theatre

Ted Strosser,  
Architecture &  
Conservation

Citation of Merit

Steve Hulbert, Inc.



# Renovations to the Campus Theatre

Ted Strosser,  
Architecture &  
Conservation

Citation of Merit

Steve Hulbert, Inc.



# Renovations to the Campus Theatre

Ted Strosser,  
Architecture &  
Conservation

Citation of Merit

Steve Hulbert, Inc.



# Renovations to the Campus Theatre

Ted Strosser,  
Architecture &  
Conservation

Citation of Merit

Steve Hulbert, Inc.





Hawley Silk Mill—Bohlin Cywinski Jackson

Citation of Merit Matt Wargo Architectural Photographer



Hawley Silk Mill—Bohlin Cywinski Jackson

Citation of Merit Matt Wargo Architectural Photographer



Hawley Silk Mill—Bohlin Cywinski Jackson

Citation of Merit Matt Wargo Architectural Photographer



Hawley Silk Mill—Bohlin Cywinski Jackson  
Citation of Merit Matt Wargo Architectural Photographer





*Rehabilitation  
of the Original  
Farm Show  
Complex*

*Converse  
Winkler  
Architecture*

*Citation of  
Merit*

*Bates Photography*



*Rehabilitation  
of the Original  
Farm Show  
Complex*

*Converse  
Winkler  
Architecture*

*Citation of  
Merit*

*Bates Photography*



Rehabilitation  
of the  
Original  
Farm Show  
Complex

Converse  
Winkler  
Architecture

Citation of  
Merit

Bates Photography



*Rehabilitation  
of the Original  
Farm Show  
Complex*

*Converse  
Winkler  
Architecture*

*Citation of  
Merit*

*Bates Photography*

# **Pittsburgh's Tribute to Children—Astorino Citation of Merit**



# Pittsburgh's Tribute to Children—Astorino Citation of Merit



# **Pittsburgh's Tribute to Children—Astorino Citation of Merit**



# **Pittsburgh's Tribute to Children—Astorino Citation of Merit**

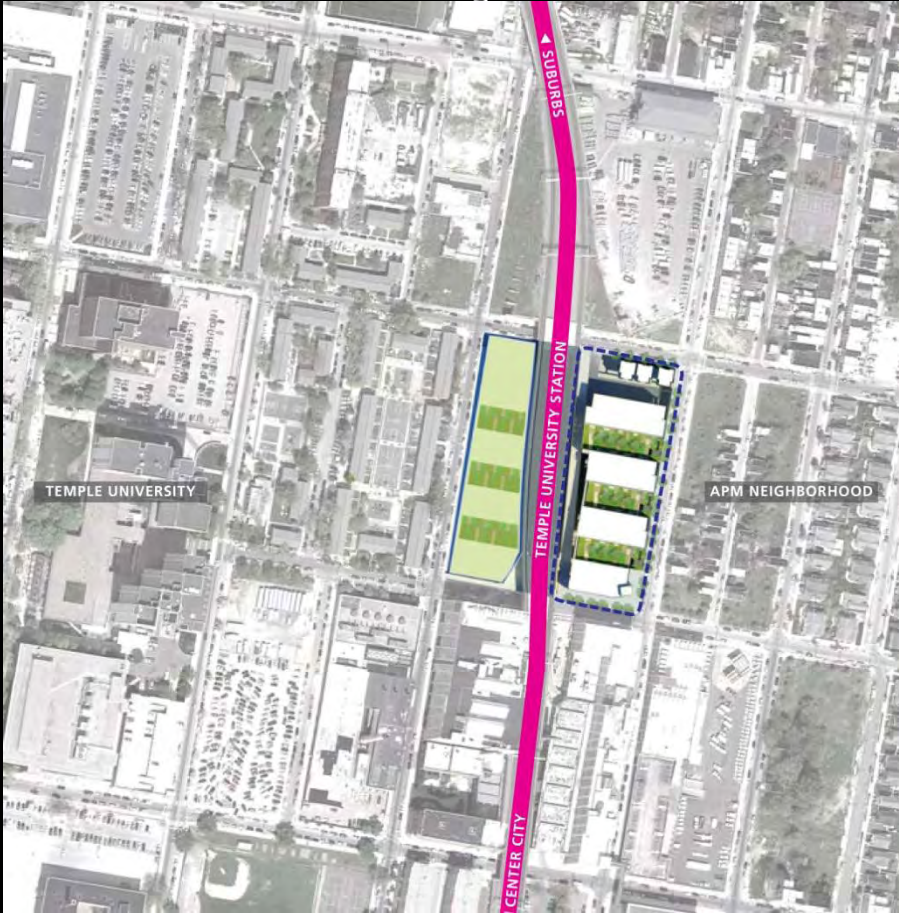




*Paseo Verdo—Wallace Roberts & Todd  
Citation of Merit*



*Paseo Verde—Wallace Roberts & Todd  
Citation of Merit*



*Paseo Verde—Wallace Roberts & Todd  
Citation of Merit*



*Paseo Verdo—Wallace Roberts & Todd  
Citation of Merit*

