



THE BALLANTYNE
A LUXURY COLLECTION HOTEL

Charlotte



THE BALLANTYNE
A LUXURY COLLECTION HOTEL

Charlotte



THE BALLANTYNE, A LUXURY COLLECTION HOTEL CHARLOTTE'S PREMIER DESTINATION EXPERIENCE

The Ballantyne invites guests to experience all that Charlotte, North Carolina has to offer. A member of The Luxury Collection by Starwood Hotels & Resorts, The Ballantyne is a Forbes Four-Star and AAA Four-Diamond recognized hotel. The hotel is located within 18 miles of Uptown and Charlotte Douglas International Airport, with more than 700 daily departures and non-stop service to 179 cities. In addition to its great accessibility to Charlotte, the hotel is set amidst shopping, dining, retail and a thriving business community.

With Charlotte's moderate climate, The Ballantyne is the ideal venue to host corporate meetings and events year-round. The hotel features more than 30,000 square feet of inspiring meeting and event spaces, with versatile indoor and outdoor options. Select from richly appointed guest rooms and suites, a Lodge group retreat and a spacious Cottage. Resort-style amenities include a spa, salon, indoor pools, seasonal outdoor pool, tennis, fitness, championship PGA golf course, golf lessons by Dana Rader Golf School and fine dining at Gallery Restaurant. All guests can enjoy complimentary valet parking and complimentary access to health and pool facilities.

The Ballantyne features an array of engaging on-site group activities such as culinary challenges and night golf. In addition, the hotel's close proximity to Charlotte's premier attractions gives groups the option to coordinate off-site events. From thrilling whitewater rafting at the U.S. National Whitewater Center to heart-pounding drives around Charlotte Motor Speedway, Charlotte offers unique team building opportunities. The area also boasts plentiful dining, fitting for dine arounds and entertaining.

With its convenient location, exceptional service, elegant event space, luxurious accommodations and countless amenities, The Ballantyne offers all of the essentials to create truly memorable meetings and events.

*Previous Page:
The Grand Staircase
provides a signature
backdrop at The Ballantyne.*

*Above:
The Main Lobby welcomes
guests with true Southern
hospitality.*

*Right Page:
The Ballantyne represents
the ultimate destination
for luxury in Charlotte.*





ACCOMMODATIONS AND AMENITIES THAT ALLURE

Left Page:
The Grand Deluxe room with two double beds offers comfort and luxury.

Above:
The marble bath is spacious and complete with deluxe bath products.

Enjoy spacious guest rooms with marble entrances, 10-foot ceilings and large picture windows at The Ballantyne. The hotel's 200 richly appointed guest rooms feature bright décor, custom-made furniture designed by Montague of London, pillow-top beds with Egyptian cotton linens and original artwork. Each room includes an executive desk, armoire and chair with ottoman, wireless and high speed internet connectivity, flat screen television, minibar, coffee maker and dual closets with plush Ballantyne robes. A spacious marble bath offers a seamless glass shower and separate oval-shaped soaking bath with luxurious bath amenities. Rooms feature grand views of the golf course or surrounding Ballantyne community.

The Ballantyne also offers a variety of suite options. The Junior Suite includes the amenities of the deluxe rooms with the enhancement of an elegant living area separate from the king bedroom. Each of the hotel's 12 Parlor Suites invites guests to enjoy all of the elegances of a deluxe room in addition to a balcony and a connecting Parlor. The 800-square-foot Parlor Suite includes two full baths with upgraded bath amenities, sleeper sofa, two televisions, executive desk, Bose Wave® Radio and additional dual closet space.

The Ballantyne features two Presidential Suites, offering breathtaking golf course views from a private balcony. Each 1,200-square-foot suite includes an inviting living room with faux fireplace, custom furnishings, original artwork, dining table that seats 12 for entertaining and a kitchen with full-size refrigerator and dishwasher. Additional features include flat screen televisions and a Bose Wave® Radio with CD player and MP3 player connectivity. The marble master bath is complete with a walk-in closet, dual vanity, garden soaking tub, separate walk-in shower and upgraded bath amenities. A half bath is located adjacent to the living room.



COMBINING CHARM WITH CONVENIENCE

Enjoy privacy, luxury and comfort at The Cottage at Ballantyne. Set off the first tee of the championship golf course, this elegant home away from home features 3,670 square feet of thoughtfully designed indoor and outdoor space. Decorated with warm furnishings and vibrant artwork, The Cottage is equipped with an assortment of fine amenities. The Cottage is the perfect venue for executive meetings and small groups as well as retreat getaways.

The Cottage features four king bedrooms, including one master and one balcony. The rooms are well-appointed with fine linens and décor, flat screen televisions and private baths. The Cottage has a gourmet kitchen, dining room, living room with a fireplace, wet bar and flat screen television, laundry room and stone patio. Guests also have access to a personal concierge and a golf cart.

The Cottage's convenient location on the grounds of The Ballantyne allows for guests to access to all of the amenities at the hotel.

*Above:
The richly appointed
living room is ideal for
entertaining.*

*Right Page:
The Cottage at Ballantyne
is conveniently located
adjacent to the first tee.*





LEISURE FEATURES THAT INSPIRE

Left Page:
The outdoor pool features a chic lounging area and covered bar.

Above:
The 10th hole of The Golf Club at Ballantyne is expertly maintained.

The Ballantyne offers a variety of amenities for guests' personal enjoyment as well as customization for on-site group activities and team building.

The Spa at Ballantyne

The Four-Star Spa at Ballantyne features a variety of specialized services including massages, facials, body exfoliation, wraps and customized treatments. The Spa's full-service Salon provides extensive hair services, manicures, pedicures and makeup application. Rejuvenate a meeting break with a selection of calming offerings such as chair massages or mini-relaxation sessions.

Fitness & Leisure Facilities

Extensive facilities include a fitness center with the latest cardio and strength training equipment, personal training services, an indoor grotto pool and wave resistance pools. Enjoy two lighted tennis courts with tennis lessons available. A seasonal outdoor pool with a chic lounging area and bar offers the perfect setting to unwind. Additionally, The Ballantyne features walking/jogging pathways around the grounds, ranging from 1.2 to 3.5 miles in distance.

The Golf Club at Ballantyne

Recognized with a 4 ½-star rating by Golf Digest, The Golf Club at Ballantyne is among the finest PGA public golf courses in the region. This 18-hole, championship course offers year-round playability and is ideal for individual play as well as group golf tournaments and outings. Coordinate engaging group events with The Golf Club such as driving exhibitions and glow-in-the-dark putting.

Dana Rader Golf School

Consistently ranked by GOLF Magazine as one of the Top 25 Golf Schools in the nation, Dana Rader Golf School offers groups custom-built events and refreshing activities. From team building exercises to full swing and short game clinics with fun competitions, the School features programs for people of all ages and ability levels.



DINING THAT EXUDES TRUE CULINARY ARTISTRY

The Ballantyne's signature dining venue is Gallery Restaurant. Featuring contemporary American fare, Gallery Restaurant's inventive menu instills a passionate approach to simple food. The culinary team has developed strong partnerships with local farmers to offer the freshest ingredients and enhance its menus seasonally. An exclusive display from local contemporary art provider Shain Gallery establishes an authentic gallery feel for the restaurant. Gallery Restaurant is open daily for breakfast, lunch and dinner and offers a plated brunch menu on weekends.

Gallery Restaurant includes an attractive bar with an extensive whiskey collection as well as an impressive wine list. In addition, the private dining room provides an inviting setting for a special event.

The Ballantyne also features the Veranda Bar, offering a convenient option for breakfast, light fare and specialty drinks in the Main Lobby. Afternoon Tea is a popular tradition, served Tuesday through Saturday, 1pm – 5pm.

*Above, left:
Chef de Cuisine David
Moore brings creativity
to the menus.*

*Above, right:
Tuna crudo represents the
flavorful fare for which
The Ballantyne is known.*

*Right Page:
Gallery Restaurant
features an upscale
setting full of ambience.*





REDEFINING THE CORPORATE RETREAT

*Left Page:
The Timbers Room is ideal
for memorable events.*

*Above, left:
The Lodge at Ballantyne
offers 35 guest rooms and
plentiful event space.*

*Above, right:
The Lodge Loft features
two pool tables for
group socializing.*

The Lodge at Ballantyne provides a casual yet sophisticated retreat atmosphere reminiscent of a North Carolina Mountain-style hunting lodge. With 35 rooms including 18 kings, 11 queens, four rooms with two doubles, and two handicapped accessible rooms, The Lodge offers an intimate and inviting setting.

The well-appointed rooms include North Carolina custom furnishings and large picturesque windows, and many rooms have balconies. All rooms feature spacious marble baths with dual vanities, a jetted tub and separate shower.

With 4,000 square feet of meeting space, The Lodge welcomes guests with the breathtaking Timbers Room. The Lodge also includes the Retreat room, four breakout rooms, the library, Lodge Loft with pool tables and a flat screen television, business center and fitness center. In addition to offering a covered porch with stone patio, The Lodge features gorgeous lawn space that is ideal for outdoor events.

The Lodge's convenient location on the grounds of The Ballantyne allows for guests to access to all of the amenities at the hotel. Enjoy dining at Gallery Restaurant, spa, golf, Dana Rader Golf School, tennis, indoor and outdoor pools, extensive fitness facilities and more within walking distance.



CULINARY OFFERINGS THAT DELIGHT

Catering

Catering is an essential component to making an event truly unique. The Ballantyne's culinary team is dedicated to providing memorable dining. The contemporary menu focuses on lightness, flavor and local ingredients, with a heavy emphasis on presentation. For buffet arrangements, professionally serviced stations provide experiential dining at its finest. The menu represents a true international philosophy, offering a broad and appealing experience for guests. Enhancements are available to customize events, ranging from Spanish tapas to French Bistro fare.

Team Building

Enrich a meeting or event with an engaging group activity on-site at The Ballantyne. Culinary activities are always popular. From simulating what it's like to open a restaurant to best burger contests, competition heats up in the kitchen. Beverage-centered team building, such as Scotch sampling or wine blending, is sure to be a crowd-pleaser. The Ballantyne's extensive team building menu also includes community service events, night golf, glow-in-the-dark putting, games, unique challenges and more.

*Above, left:
Decadent desserts offer
a delicious finale for
special events.*

*Above, right:
Wine tastings are popular
for group activities.*

*Right Page:
An assortment of colorful
pastries adds to the
elegance of an event.*





CREATING EFFORTLESS AND ENJOYABLE EVENTS IS OUR SPECIALTY

*Previous Page:
The Ballantyne Ballroom
is the hotel's signature
event space.*

*Left Page:
The Fairway Ballroom
offers a versatile backdrop
for meetings and events.*

*Above:
The York Room features
elegant space with access
to an atrium and terrace.*

The Ballantyne provides all of the necessities for an unforgettable event complemented by Southern hospitality. Recognized as a Paragon Award Winner by Meetings & Conventions, The Ballantyne is committed to providing guests with exceptional event experiences.

Known for accessibility, versatile event space, desirable amenities and impeccable service, The Ballantyne offers 30,000 square feet of indoor and outdoor venues ranging from boardrooms to ballrooms to event lawns. Elegantly presented culinary offerings add originality to the meeting experience. Enhance an event with sophisticated audiovisual and staging services provided in-house by A & V Company.

The Ballantyne is also very committed to sustainability. Natura® Water, an environmentally-friendly water purification system for still and sparkling water, is available for meetings and events. In addition, the hotel uses energy efficient lighting in many event spaces. A dedicated green committee meets regularly to develop new sustainable practices.

The Ballantyne's strong service culture is what sets us apart. Our talented team looks forward to exceeding your expectations in planning and executing a flawless event. Understanding that the success of an event can be defined in the smallest of details, our staff is dedicated to partnering on a successful event every step of the way.



INSPIRING SPACES FOR UNFORGETTABLE EVENTS

From flexible indoor and outdoor venues ranging from boardrooms and meeting rooms to elegant ballrooms and picturesque lawns, The Ballantyne offers a variety of appealing event backdrops.

Ballantyne Ballroom

The 6,230-square-foot Ballantyne Ballroom is the main event space at the hotel. With gorgeous fixtures and a neutral color palette, the space can be reconfigured for a variety of arrangements.

Fairway Ballroom

With a picturesque view of the 18th hole at The Ballantyne, the Fairway Ballroom offers a more relaxed luxury setting. Accommodating up to 200 people for a reception, this venue has the option of using the adjoining Overlook room.

Carolina Room and Great Room

The Ballantyne's newest event space, the 1,932-square-foot Carolina Room, is a popular option with a balcony overlooking the championship golf course. The adjacent Great Room serves as an ideal venue for a pre-event reception.

York and Union

Situated on the lower level by the hotel's signature Grand Staircase, York and Union have access to a lovely atrium and charming terrace. York can accommodate up to 60 for a reception and Union can host 100 for a reception.

Boardrooms

The Ballantyne offers a variety of boardrooms with parlor and traditional boardroom set-ups.

Event Lawns

The Ballantyne offers two event lawns that capture the sweeping views of the lush, championship golf course. Charlotte's mild climate is the perfect partner for memorable outdoor events.

Audubon Amphitheater

The Audubon Amphitheater provides natural amphitheater seating for up to 100 people. The space also has a restroom, three picnic tables with umbrella shading and one grill.

*Above, left:
The Carolina Room
offers natural light
and a balcony.*

*Above, right:
The Great Room is ideal
for group gatherings.*

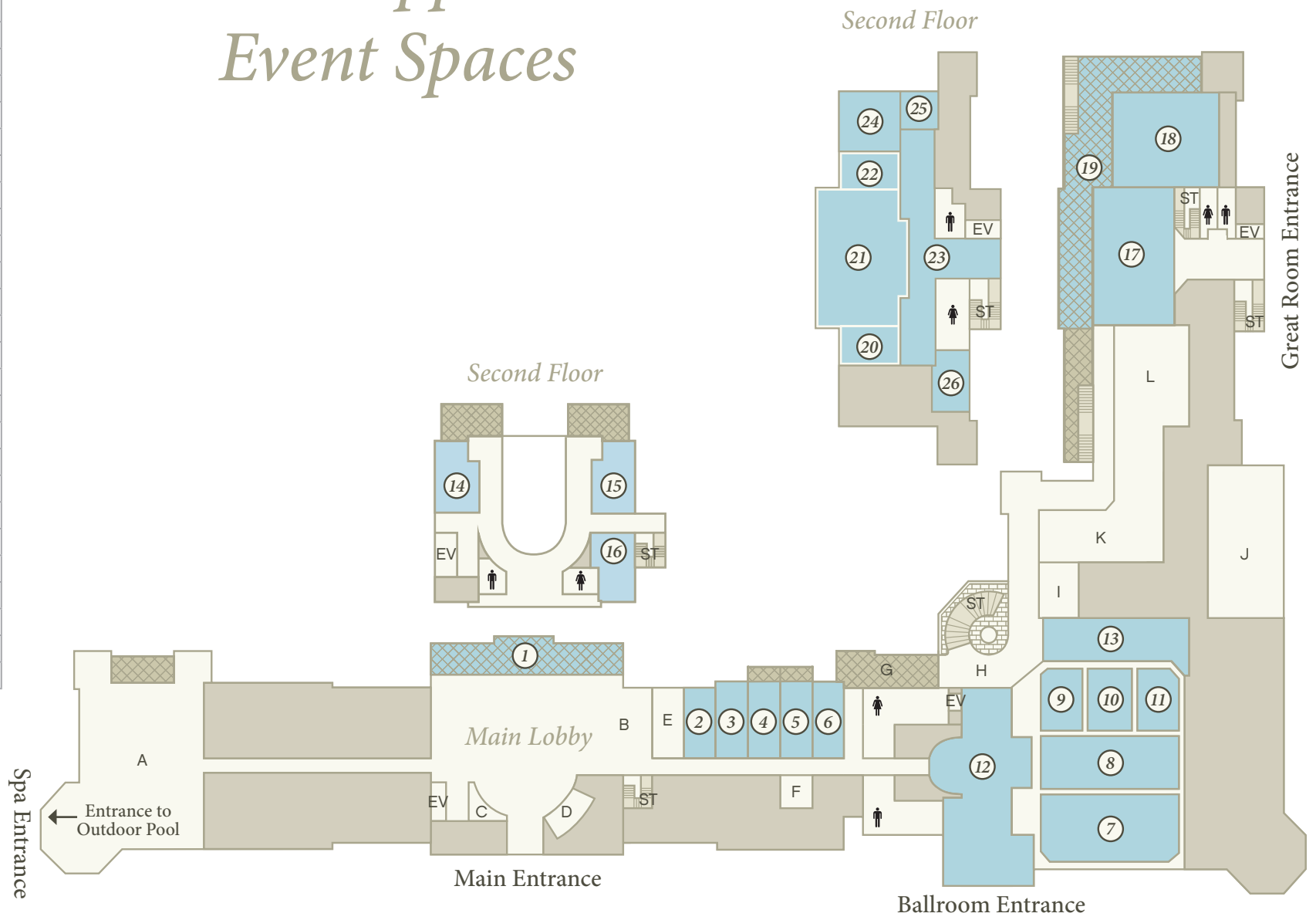
*Right Page:
The South Event Lawn
offers the perfect setting
for a magical affair.*



		METER	FEET	SQ. METER	SQ. FEET	HEIGHT	DINNER	RECEPTION	DANCE	THEATER	U-SHAPE	CLASSROOM	CONFERENCE	CRESCENT
1	Veranda Balcony	25 x 3	82 x 11	75	902	10								
2	Azalea	7 x 4	25 x 13	28	325	10	12						12	
3	Bradford	8 x 4	27 x 13	32	351	10	12	12						
4	Dogwood	8 x 4	27 x 13	32	351	10	12						12	
5	Magnolia	8 x 4	27 x 13	32	351	10	12	12						
6	Willow	8 x 4	27 x 13	32	351	10	12						12	
	Ballantyne Ballroom	27 x 21	89 x 70	567	6230	16	400	500	350	600		280	90	280
7	Ballantyne A	21 x 9	70 x 29	189	2030	16	140	180	120	200	60	80	46	88
8	Ballantyne B	21 x 8	70 x 29	168	2030	16	140	180	120	200	60	80	46	88
9	Ballantyne C	9 x 7	30 x 23	63	690	16	30	35		45	16	24	20	24
10	Ballantyne D	9 x 7	30 x 24	63	720	16	30	35		48	20	30	20	24
11	Ballantyne E	9 x 7	30 x 23	63	690	16	30	35		45	16	24	20	24
12	Ballantyne Foyer B	24 x 4	78 x 13	96	1014	16								
13	Ballantyne Foyer D	19 x 3	63 x 9	57	567	16								
14	Bissell	5 x 5	18 x 18	25	324	8	18	14		20	12	16	14	12
15	Harris	5 x 5	18 x 18	25	324	8	18	14		20	12	16	14	12
16	Morrison	9 x 4	30 x 15	36	450	8	18	14		20	12	16	14	12
17	Great Room	11 x 8	36 x 27	88	972	12	90	150						
18	Carolina	15 x 14	46 x 42	210	1932	11	120	150	80	160	36	72	28	72
19	Carolina Balcony	50 x 5	164 x 16	250	2624			75						
	Fairway Ballroom	27 x 12	90 x 39	324	3510	11	180	200	150	220	40	110	52	112
20	Fairway A	7 x 5	24 x 18	35	432	11	20	25		40	12	16	16	16
21	Fairway B	16 x 12	54 x 39	192	2106	11	120	130	80	175	28	80	48	72
22	Fairway C	7 x 5	24 x 18	35	432	11	20	25		40	12	16	16	16
23	Fairway Foyer	27 x 3	88 x 10	81	880	11								
24	Overlook	7 x 7	25 x 25	49	625	11	40	45		50	18	20	18	32
25	Library	4 x 4	14 x 15	16	210	11	10							
26	Clubhouse Boardroom	8 x 4	26 x 14	32	364	11	12						12	

OTHER AMENITIES					
A	The Spa at Ballantyne	F	Business Center	K	Gallery Restaurant
B	Veranda Bar	G	Ballroom Balcony	L	Gallery Bar
C	Concierge	H	Grand Staircase	EV	Elevator(s)
D	Guest Reception	I	Private Dining Room	♀	Women's Restroom
E	Event Design Center	J	Loading Dock	♂	Men's Restroom
		ST	Stairs		

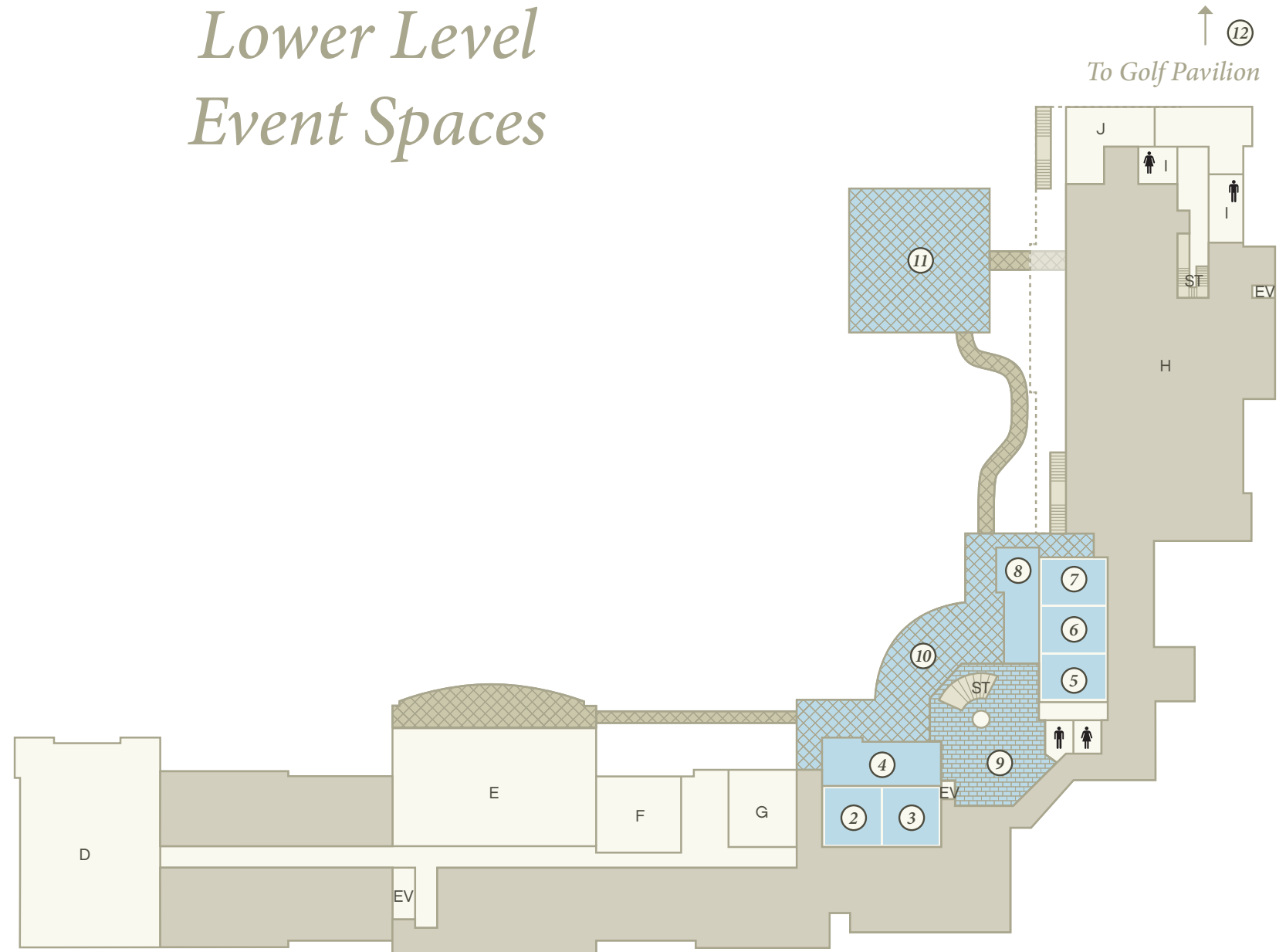
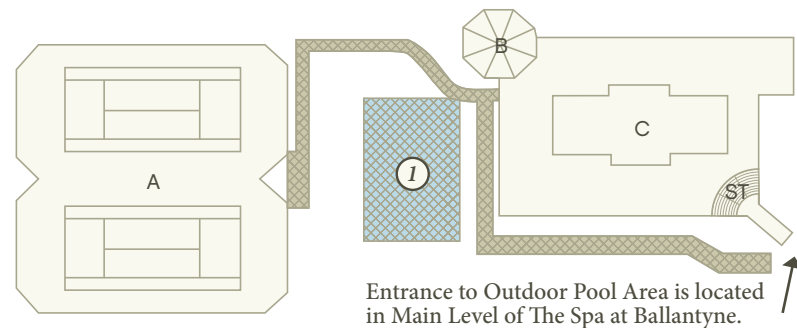
Main & Upper Level Event Spaces



		METER	FEET	SQ. METER	SQ. FEET	HEIGHT	DINNER	RECEPTION	DANCE	THEATER	U-SHAPE	CLASSROOM	CONFERENCE	CRESCENT
1	North Lawn	12 x 18	40 x 60	216	2400			250						
	York	14 x 6	46 x 19	84	874	10	50	60	30	80	24	32	34	32
2	York A	7 x 6	23 x 19	42	437	10	20	25		36	14	18	16	16
3	York B	7 x 6	23 x 19	42	437	10	20	25		36	14	18	16	16
4	York Foyer	14 x 3	46 x 12	42	552	10								
	Union	17 x 18	56 x 26	136	1456	10	100	120	60	125	40	60	46	48
5	Union A	8 x 5	26 x 18	40	468	10	20	25		36	14	16	12	16
6	Union B	8 x 6	26 x 21	48	546	10	30	35		48	18	20	20	18
7	Union C	8 x 5	26 x 18	40	468	10	20	25		36	14	16	12	16
8	Union Foyer	14 x 3	48 x 12	42	576	10								
9	Atrium			575	1888	26	60	400						
10	Terrace	20 x 3	66 x 12	60	792		60	100		100				
11	South Lawn	12 x 15	40 x 50	180	2000		200	250	160	180				
12	Golf Pavilion	10 x 13	38 x 40	130	1520	10	60	100						

Lower Level Event Spaces

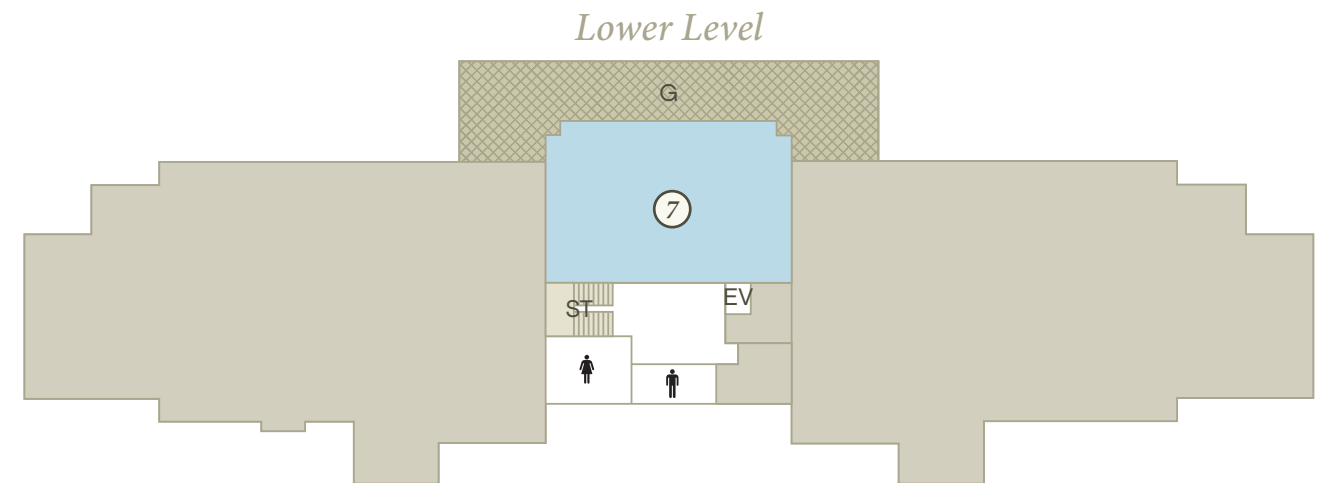
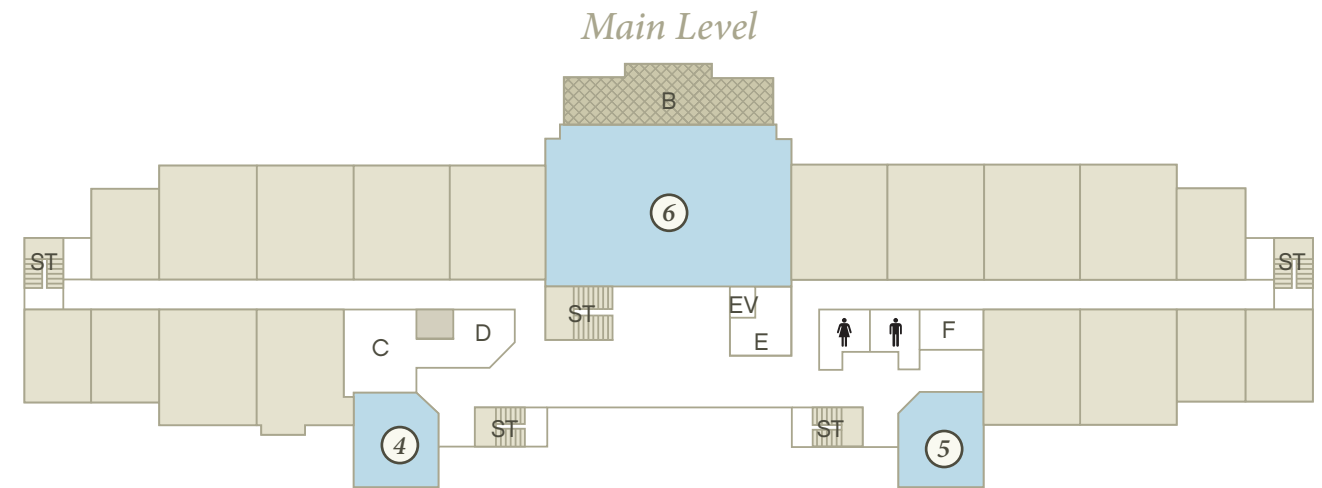
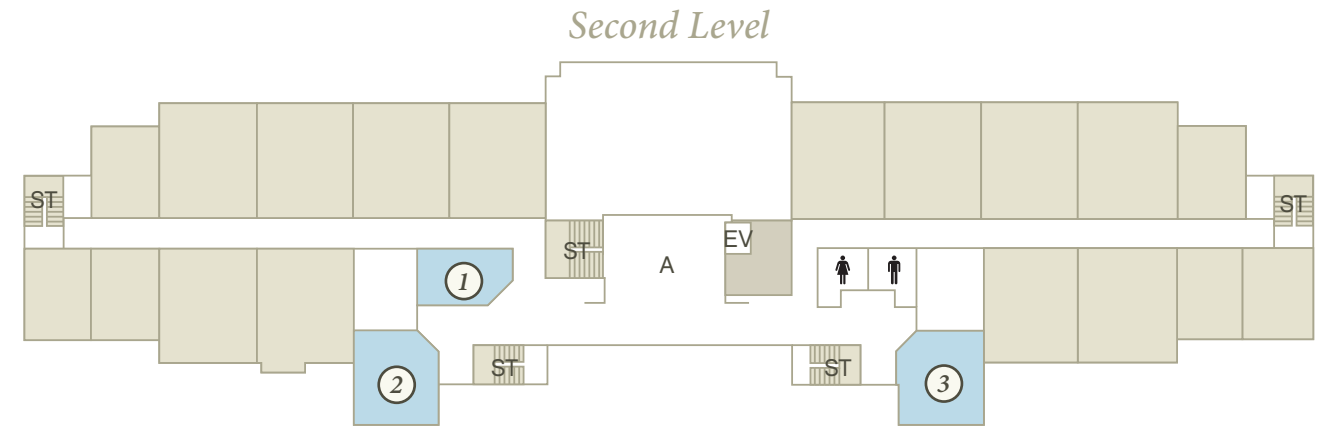
OTHER AMENITIES					
A	Tennis Courts	F	Pool/Fitness Locker Rooms	EV	Elevator(s)
B	Outdoor Pool Bar	G	Fitness Center	ST	Stairs
C	Outdoor Pool	H	Golf Facility	♀	Women's Restroom
D	The Spa at Ballantyne	I	Golf Locker Rooms	♂	Men's Restroom
E	Indoor Pool	J	Golf Pro Shop		



The Lodge - Event Spaces

		METER	FEET	SQ. METER	SQ. FEET	HEIGHT	DINNER	RECEPTION	DANCE	THEATER	U-SHAPE	CLASSROOM	CONFERENCE	CRESCENT
1	Library	5 x 4	17 x 13	20	221	9	8						8	
2	Elm	7 x 6	23 x 20	42	460	9	20				16	20	16	16
3	Maple	7 x 6	23 x 20	42	460	9	20				16	20	16	16
4	Cedar	7 x 6	23 x 20	42	460	9	20				16	20	16	16
5	Oak	7 x 6	23 x 20	42	460	9	20				16	20	16	16
6	Timbers	18 x 12	60 x 39	216	2340	30	100	120	100					
7	Retreat	16 x 12	51 x 39	162	1989	8	120	200	120	170	34	80	34	64

OTHER AMENITIES				
A	Loft	F	Business Center	Men's Restroom
B	Timbers Balcony	G	Retreat Patio	
C	Fitness Room	ST	Stairs	
D	Guest Reception	EV	Elevator(s)	
E	Lodge Pantry		Women's Restroom	





For more information,
call **(704) 248-4070** or visit **theballantynehotel.com**.

The Ballantyne Hotel & Lodge, 10000 Ballantyne Commons Parkway, Charlotte, NC 28277