

# THE BEST WAY TO EXPLORE THE ARCTIC

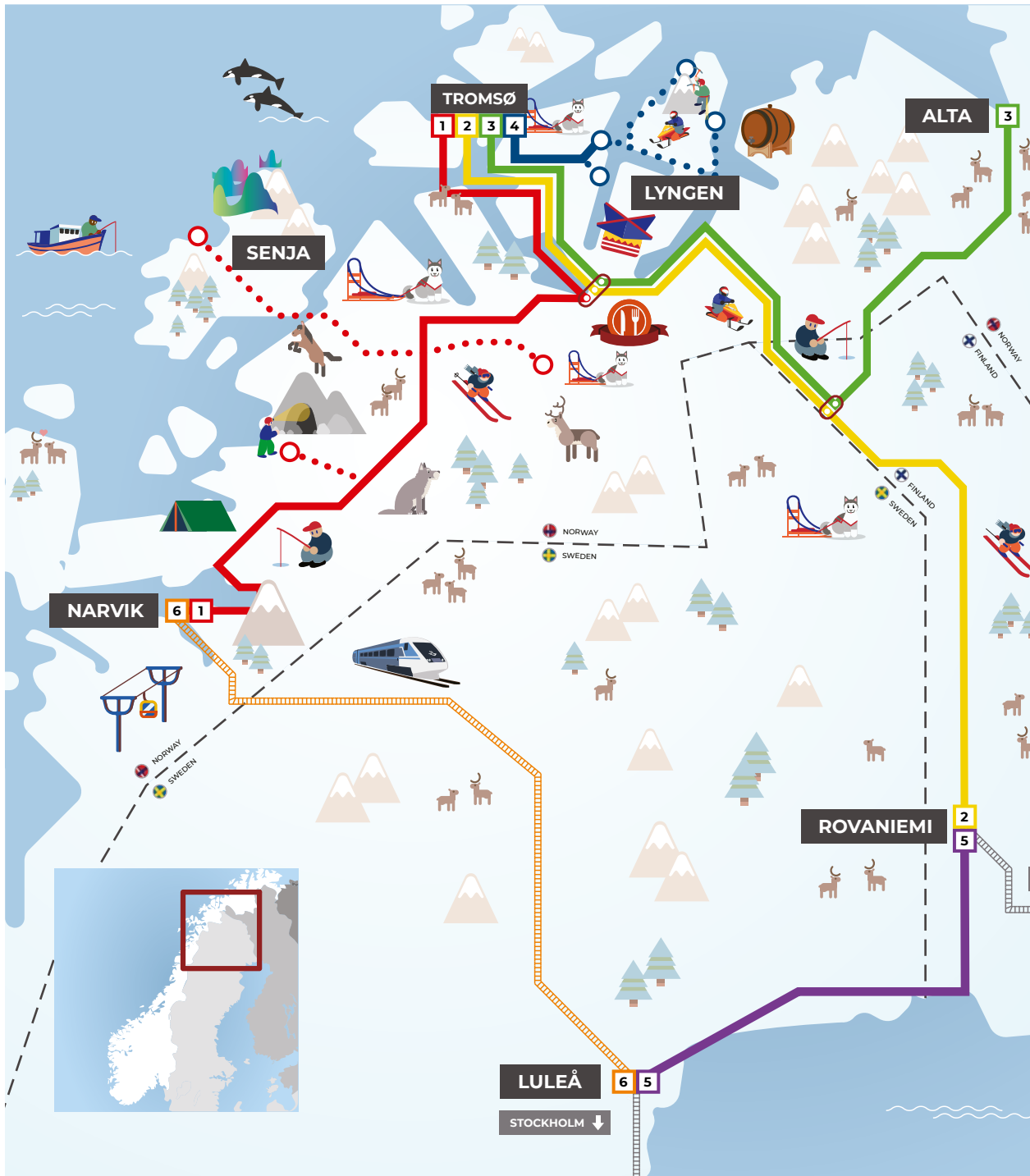
2019/2020 season  
01 DEC 2019 – 31 MAR 2020



**Interreg**  
Nord  
European Regional Development Fund



EUROPEAN UNION



## What is The Arctic Route?

The Arctic Route is a safe, reliable and comfortable way of coach and train travel to new adventures and unforgettable memories. Our bus and train routes make it easier for you to visit the various destinations in the Arctic region. Choose between one way or return tickets. Our partners offer a wide range of experiences such as dog sledding, traditional food and drink, wildlife safaris, accommodation and much more.

We will operate services daily between Tromsø and Narvik, Lyngen, Alta, Rovaniemi, Luleå and Kiruna from 1 December until late March. The Narvik - Kiruna route is a year-round route.

The Arctic Route is operated by Bussring AS, Eskelinen Oy and Statens Järveger (SJ) using new, environmentally friendly and comfortable coaches and modern trains with competent, service-oriented English-speaking drivers and staff.

Hot and cold drinks and snacks are available on board, and Wi-Fi is available for guests.

All of us at The Arctic Route, along with our partners, welcome you to share the Arctic experience with us.

HELSINKI →

**The Arctic Route**[www.thearcticroute.com](http://www.thearcticroute.com)[f thearcticroute](#)[@ thearcticroute](#)







# Contents

- The easy way to experience the Arctic ..... page 6
- How to dress in the Arctic ..... page 8
- ROUTE 1 Tromsø – Narvik / Narvik – Tromsø ..... page 9**
- ROUTE 2 Tromsø – Rovaniemi / Rovaniemi – Tromsø . page 14**
- ROUTE 3 Tromsø – Alta / Alta – Tromsø ..... page 18**
- ROUTE 4 Tromsø – Lyngen / Lyngen – Tromsø ..... page 25**
- ROUTE 5 Rovaniemi – Luleå / Luleå – Rovaniemi ..... page 29**
- ROUTE 6 Narvik – Luleå / Luleå – Narvik ..... page 32**
- Presentation of the Visit companies ..... page 36
- Operators ..... page 38
- FAQs – The Arctic Route ..... page 39
- Photo credits ..... page 42



# IT'S EASY TO EXPLORE THE ARCTIC WITH US

1

**Visit [thearticroute.com](http://thearticroute.com)**

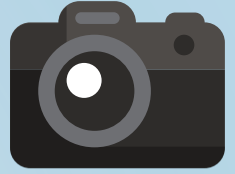
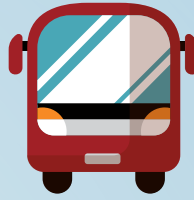
Find your local activity of choice!

2

**Find and book your trip**

Roundtrip? Daytrip?





3

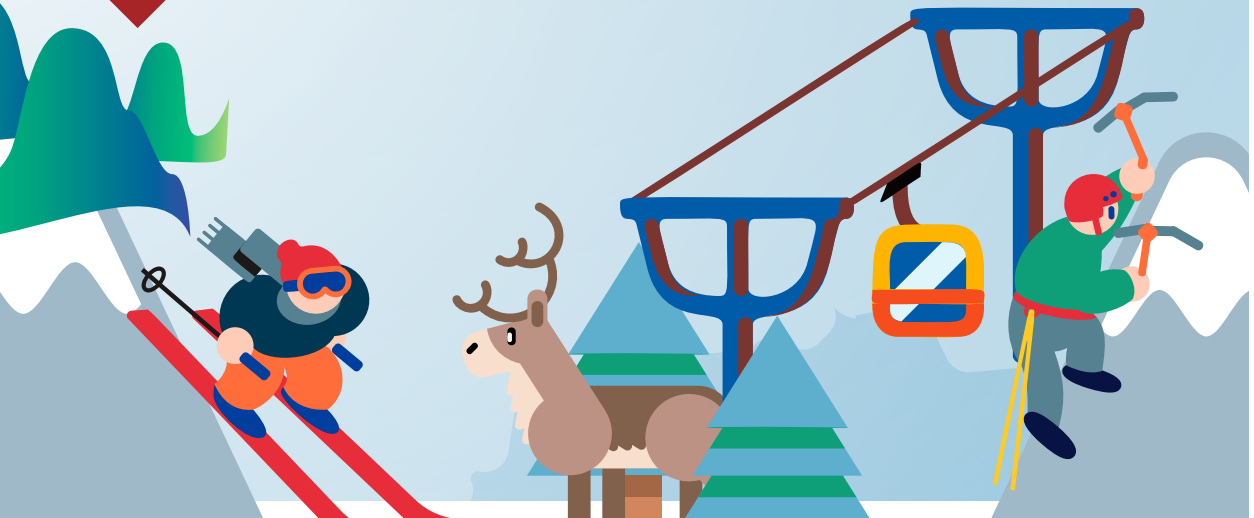
4

**Get onboard and enjoy the view**

Travel safe with experience drivers  
Easy and comfortable

**Share your moments!**

#thearticroute



# Dress for success

In order for your stay in Northern Norway to be as comfortable as possible, it is important to have the right clothes.

Text: Visit Tromsø

Photo © Therese Norman Andersen / Visit Tromsø

Bring warm and comfortable clothes and shoes. We recommend wearing 100 percent wool or similar quality clothing next to your skin. Layer your clothing so that you can easily regulate your temperature by removing or adding a layer. Outer clothing should be lined and windproof. Many activity providers supply clothing for excursions, i.e. thermal suits, shoes, hat and mittens. Tromsø has a varied climate and in the winter an average temperature of around -4 °C. However, if you are coming here to experience Arctic adventures or chase the Northern Lights, you need to expect temperatures from -25 °C to +5 °C.

## Spring & Summer (May – August)

Summer wool, summer hat, summer down-jacket and summer gloves are words the locals know well. The average temperature is 10 °C, so naturally we dress accordingly. In the early summer, from May-June, it can be a little wet and cold. It is a good idea to have a thin wool layer and a light wind- and rainproof jacket when exploring around the city. The weather in July and August– September tends to be better, but the same applies for these months as well. This is especially so if you intend to do any hiking. It is very important to take both warm clothing and a rain jacket with you whenever you go hiking. Remember: Weather changes quickly – and it is often a lot colder up in the mountains than it is in the city centre.

## Autumn & Winter (September – April)

To feel really comfortable outdoors in winter it's important to dress properly, especially if you will be participating in some kind of physical activity. Think layer-by-layer, we recommend wool or some other material that keeps you dry closest to your body. A warm down jacket makes a very nice outer layer if it's really cold outside. And don't forget warm shoes, gloves and a cap. If you come from a warm country or do not wish to carry a lot of bulky clothing with you, there is an excellent company in Tromsø called Tromsø Outdoor, which supplies a full range of outdoor clothing.

Long-sleeved and long-legged wool underwear

Hat

Wool socks

Thick jumper – preferably in wool

Mittens or gloves

Lined trousers – preferably windproof

Scarf

Winter jacket (down)

Windproof/water resistant jacket

Waterproof, warm shoes with non-slip soles







Route 915

## TROMSØ – NARVIK / NARVIK – TROMSØ

The Tromsø – Narvik / Narvik – Tromsø bus route gives you the opportunity to travel between Tromsø and Narvik in an efficient, safe and environmentally friendly way. This route is well suited for day trips, e.g. to the Polar Park from either Narvik or Tromsø. In Narvik, both arrivals and departures will correspond with SJ's trains to and from Narvik.

**STOPS**

8

**LONGEST DISTANCE**

4 HOURS

**AVAILABLE**

EVERY DAY  
1 DEC – 31 MAR

**PRICE**

NOK 300 – 1400

## When to catch the bus

### TROMSØ – NARVIK

09:00	Tromsø Port 8 (near Scandic Ishavshotel)
10:00	Nordkjosbotn
10:50	Buktamoen (Circle K)
11:30	Setermoen
10:50	Polar Park
12:10	Dep. Polar Park
13:00	Arr. Narvik Train station, Scandic, Quality Grand Royal
15:00	Dep. Polar Park
16:15	Arr. Narvik Train station, Scandic, Quality Grand Royal

### NARVIK – TROMSØ

10:30	Narvik Scandic, Quality Grand Royal, Train station
11:45	Polar Park
12:10	Dep. Polar Park
13:00	Arr. Narvik
13:20	Dep. Narvik
14:40	Polar Park
15:00	Dep. Polar Park
16:10	Buktamoen
17:00	Nordkjosbotn
18:00	Tromsø

## Along the route

On the Narvik route, you will travel through the inland of Troms county. Along this route, it's possible to visit a wide range of activity providers such as dog sledding, traditional food and drink, wildlife safaris, accommodation and much more. This route is well suited for day trips, e.g. to the Polar Park from either Narvik or Tromsø. It also connects with the train to Kiruna, on the famous Arctic Circle Train. The journey from Tromsø-Narvik and vice versa is operated on new and comfortable coaches with experienced, service-oriented English-speaking drivers. For your convenience, there is an onboard toilet, Wi-Fi and hot/cold drinks and snacks are available for the passengers. We offer daily departures/arrivals at Tromsø, Nordkjosbotn, Buktamoen, Setermoen, Polar Park and Narvik.



### OFFICIAL TOURIST INFORMATION IN THE AREA

Visit  
**TROMSØ!**

www.visit tromsø.no  
info@visit tromsø.no  
+47 77 61 00 00  
@ visit tromsø



NARVIK  
ARCTIC EXPERIENCE

www.visit narvik.com  
post@visit narvik.com  
+47 76 96 56 00  
@ visit narvik



VISITSENJA  
REGION

www.visit senja.no  
post@visit senja.no  
+47 77 61 00 00  
@ visit senjaregion



### OPERATOR

**Bussring**

www.bussring.no  
post@bussring.no  
+47 400 02 196



## Tromsø Safari

[www.tromsosafari.no](http://www.tromsosafari.no)

[f TromsoSafari](#)

[@ tromso\\_safari](#)

TROMSØ SAFARI IS ONE OF THE LEADING activity companies in Tromsø with 18 years' experience and knowledge. We are locally owned and operated offering a wide range of fun and scenic day and evening activities throughout the year, embracing the natural beauty and culture of Tromsø and Northern Norway and at the same time maintaining and strengthening local pride and involvement.



## Vollan Gjestestue

[www.vollangjestestue.no](http://www.vollangjestestue.no)

[f vollangjestestue](#)

[@ vollangjestestue](#)

IN THE MIDDLE OF THE WILDERNESS — Distance to Tromsø 70 km, Lyngen Alps 60 km, Tamokdalen 30 km and nice walking opportunities on your doorstep. The old main building was built by the Germans during World War II. The hotel is owned and operated by the third generation. It's now a combination of historic and modern facilities. We offer a menu based on traditional dishes and local ingredients. If you need some peace and quiet, we have several lounges for 4 – 60 people. We have 26 comfortable hotel rooms in the main building, including one large suite.



## Destination Snowman

[www.destinationssnowman.no](http://www.destinationssnowman.no)

[f Destination Snowman](#)

[@ destinationssnowman](#)

THE CLIMATE OF THE INLAND MÅLSELV – only two hours from Tromsø – is dry and cold, with ultimate conditions for snow and Northern Lights. The nature is outstanding; high mountains and beautiful valleys – and there is plenty to do! But the atmosphere is relaxed, personal and authentic. Activity centre; Basecamp Snowman Accommodation; The historical hotel Rundhaug Gjestegård/ apartment, cabins, camping at Målselv Fjellandsby.



## Målselv Fjellandsby

[www.mountainvillage.no](http://www.mountainvillage.no)

[f Malselv.Fjellandsby](#)

[@ malselvfjellandsby](#)

WELCOME TO MÅLSELV MOUNTAIN VILLAGE! The inland climate is perfect for snow and winter activities. Skiing in prepared cross-country trails or downhill ski slopes. Our ski slopes are suitable for all levels. Take ski lessons, try snowshoes or just relax looking at the beautiful view from the mountains. Stay in modern apartments or try the unique experience of sleeping in our Aurora glass tent. Warm sleeping bags and reindeer skins ensure that you stay warm all night long. A memory for life! For other activities and information, visit our website.



## Off Track Experience

[www.offtrackexperience.com](http://www.offtrackexperience.com)

 OffTrackExperience

 offtracjexpoerience

FOUNDED ON THE COMBINATION OF traditional Norwegian outdoor lifestyle and French “à la carte” tours, we are specialized in tailor-made high quality tours, in the heart of Northern Norway. For over 15 years, we have been offering short and long breaks for individuals, families and groups from all over the world, both for leisure and professional purposes. We offer a variety of options, to show the very best that our region has to offer in terms of nature, culture, heritage, nature, and food.



## Hamn i Senja

[www.hamnisenja.no](http://www.hamnisenja.no)

 hamnisenja1

 hamnisenja

EXPERIENCE EXCITING WINTER ADVENTURES and perfect 360° panorama views of the Northern Lights and an amazing landscape by the sea – visit the idyllic resort Hamn in Senja. We offer a relaxing atmosphere, friendly service and comfortable accommodation.



## Polar Park

[www.polarpark.no](http://www.polarpark.no)

 polarparknorway

 polarpark

WELCOME TO THE WORLD'S NORTHERNMOST wildlife park, perfectly situated in the beautiful Salangsdalen valley. Our main goal is to create a Norwegian wilderness experience with the beautiful surroundings of Northern Norway's nature as a setting for your visit to Polar Park. The animals live in their natural habitat and in huge enclosures. Experience wolves, lynx, moose, deer, reindeer and musk oxen. The park is a 2.5-hour drive from Tromsø and 1 hour from Narvik. Option: Take the bus to Narvik instead of Tromsø after your stay at Polar Park.



## Fjellkysten

[www.fjellkysten.no](http://www.fjellkysten.no)

 fjellkysten

 fjellkysten

FJELLKYSTEN IS SURROUNDED BY BEAUTIFUL mountains and fjords. The house itself blends in with the nature. It has a grass roof and is partially buried in the ground. Most rooms have a beautiful view of the fjord, but you'll get the best view from our outdoor SPA area. Nothing beats the feeling of seeing the Northern Lights from inside a sauna. Our restaurant serves food inspired by our location, where the mountains meet the fjord. Close to Fjellkysten you'll find the Polar Park, the world's northernmost wildlife with its beautiful surroundings that are still quite natural to the animals.





### Lapphaugen Turiststasjon

[www.lapphaugen.no](http://www.lapphaugen.no)  
 f Lapphaugen  
 @ lapphaugenturistasjon

LAPPHAUGEN TOURIST STATION IS A TRADITIONAL tourist station and campsite with its own cafe located in the Arctic mountains just north of Narvik. In our cosy cafe we serve good, Norwegian and reasonably priced traditional food. Lapphaugen Tourist Station is a great starting point for many nature-based experiences, all year round. Combine a stay at Lapphaugen with a visit at Polar Park where you can meet the moose and all the Arctic predators. Lapphaugen is a perfect place if you like ice fishing.



### Narvikfjellet

[www.narvikfjellet.no](http://www.narvikfjellet.no)  
 f Narvikfjellet  
 @ Narvikfjellet

WE ARE NORWAY'S MOST URBAN SKI RESORT, a unique destination for piste and off-piste skiing overlooking the sea, for Northern Lights experiences, and a place to enjoy the beautiful Midnight Sun. Narvikfjellet is located north of the Arctic Circle, overlooking the town of Narvik. During the wintertime, the Polar Nights give us magical moments on the crisp white snow - with skis, around the fire, with snowshoes, or on a snow racer. During the summer, the Midnight Sun gives us 24 hours of daylight, which makes it possible to enjoy the mountain for activities like hiking, running, cycling and climbing all day and all night.





Route 900

## TROMSØ – ROVANIEMI / ROVANIEMI – TROMSØ

Tromsø and Rovaniemi have a great number of exciting attractions to offer their visitors. They both sport a vibrant city life where something happens all the time. Along this route, there are a number of exciting activity providers and spectacular accommodation well worth visiting.

**STOPS**  
10

**LONGEST DISTANCE**  
11.5 HOURS

**AVAILABLE**  
EVERY DAY  
1 DEC – 31 MAR

**PRICE**  
NOK 320 – 1200

## When to catch the bus

### TROMSØ – ROVANIEMI

- 07:00 Tromsø Port 8 (near Scandic Ishavshotel)
- 08:00 Nordkjosbotn (Vollan Gjestestue)
- 09:00 Skibotn Circle K
- 10:50\* Kilpisjärvi (K Market)
- 12:40\* Karesuando
- 13:10\* Palojoensuu\*\*
- 14:05\* Muonio
- 15:05\* Levi (Levi Hotel Spa, Hissitie)
- 15:30\* Kittilä (Airport, Hotel Kittilä)
- 17:35\* Rovaniemi  
Bus station, Train station, City Centre, Santa Claus Village (only on demand + NOK100)

\*Local Finnish Time

\*\* Switch to Eskelisen Lapin Linjat to Rovaniemi

### ROVANIEMI – TROMSØ

- 10:40\* Santa Claus Village (Only on demand + NOK100)
- 11:40\* RovaniemiBus station, Train station, City Centre
- 13:40\* Kittilä (Airport, Hotel Kittilä)
- 14:00\* Levi (Levi Hotel Spa, Hissitie)
- 15:05\* Muonio City Centre
- 15:50\* Palojoensuu\*\*
- 16:45\* Karesuando
- 18:10\* Kilpisjärvi (K Market)
- 17:50 Skibotn Circle K
- 18:25 Nordkjosbotn (Vollan Gjestestue)
- 19:30 Tromsø Port 8 (nearby Scandic Ishavshotel)

\*Local Finnish Time

\*\* Switch to Eskelisen Lapin Linjat to Tromsø

## Along the route

Tromsø and Rovaniemi have a great number of exciting attractions to offer their visitors. They both sport a vibrant city life where something is happening all the time. On this route, you will experience the beauty of Finnish Lapland, both the tundra and the small municipalities along the way. This route will connect you to Kittilä Airport, Levi Ski Resort and Rovaniemi's famous Santa Claus Village. In addition to the beauty of the landscape, there are many activity providers offering experiences such as, snowmobile safaris, skiing, Sami culture, husky safaris, ice fishing, local food and culture, accommodation and much more. It's also possible to continue your journey in Finland down to Oulu on the same day. The journey from Tromsø-Rovaniemi and vice versa is operated on new and comfortable coaches with experienced, service-oriented English-speaking drivers. For your convenience, there is an onboard toilet, Wi-Fi and hot/cold drinks and snacks are available for the passengers. We offer daily departures/arrivals at Tromsø, Kilpisjärvi, Karesuando, Palojoensuu, Muonio, Olostunturi, Levi, Kittilä, Rovaniemi and Oulo.



### OFFICIAL TOURIST INFORMATION IN THE AREA



www.visitrovaniemi.fi  
info@visitrovaniemi.fi  
+358 (0) 16 346 270  
@ visitrovaniemi



www.levi.fi  
levi.info@levi.fi  
+358 16 639 3300  
@ levilapland



### OPERATORS



www.bussring.no  
post@bussring.no  
+47 400 02 196



www.eskelisen.fi  
info@eskelisen.fi  
+358 16 3422 160



## Kilpis Safariit

[www.kilpissafarit.fi](http://www.kilpissafarit.fi)

[f kilpissafarit](#)

[@ kilpissafarit](#)

IF YOU ARE LOOKING FOR THE BEST OF LAPLAND, your destination has to be Kilpisjärvi, which is a great starting point for hiking and snowmobile excursions. You can conquer the highest fells of Finland, including Mount Halti, and visit Norway and the Arctic coast. Or would you rather go ice-fishing? How about visiting a Sami village in the middle of the wilderness? Or would you prefer following a Sami reindeer herder to the fells to see reindeer in their natural habitat? Rent a snowmobile or take a guided tour with Kilpissafarit. Kilpissafarit is ready to help you with all of your wishes.



## Tundrea

[www.tundrea.com](http://www.tundrea.com)

[f Tundrea.com](#)

[@ tundreaholidayresort](#)

TUNDREA IS A FULL-SERVICE HOLIDAY CENTRE located on the shore of Lake Kilpisjärvi, right at the bottom of the mighty Saana fell. Tundrea allows you to experience the smallness of man and the greatness of nature, without sacrificing any of your comfort. The tundra gives free roam to the mind and invites you to different activities. This makes Kilpisjärvi the ideal destination for anyone who enjoys being surrounded by nature, like skiers, hikers and photographers. Kilpisjärvi provides you with all the services a visitor may require.



## Santa's Hotels

[www.santashotels.fi](http://www.santashotels.fi)

[f santashotelunturi](#)

[@ santashotels](#)

TRAVEL TO THE ARCTIC CIRCLE and come to relax in the Lappish nature or at the Arctic seaside. Santa's Hotels has the best holiday destinations for you: First-class dining, high-quality hotel rooms, premium glass igloos, full-service chalets and fully-equipped apartments. For more information about our hotels and what offer, please visit our website.



## Lapland Hotels

[www.laplandhotels.com](http://www.laplandhotels.com)

[f laplandhotelsofficial](#)

[@ lapland\\_hotels](#)

WHETHER YOU ARE LOOKING FOR easy accommodation, central location, or some peace and quiet, our selection offers you options from hiking accommodation to luxury suites and holiday apartments. In addition, Lapland Hotels offers diverse activities and relaxation in all destinations around the year – exactly as you and your group wish. The five ski resorts owned by Lapland Hotels are situated in Rovaniemi, Yllas, Pallas and Olos. For more information about our hotels and what offer, please visit our website.





## Arctic Land Adventure

[www.arcticlandadventure.com](http://www.arcticlandadventure.com)

[f arcticlandadventure](#)

[@ arcticlandadventure](#)

ARCTIC LAND ADVENTURE OFFERS GUESTS an unforgettable combination of nature, silence and luxury. Our exclusive accommodation in 4 high quality Glass Igloos is combined with 'live like a local' Reindeer Ranch visit and traditional Lappish food experience. Our experience packages are designed to give you a glimpse of the Reindeer Herder's life, offer an opportunity to be part of the nature and wildlife, to hunt the Northern Lights during winter or experience the white Arctic nights during the summer or just to relax in the sauna and outdoor hot tub by the lakeside under the Arctic sky.



## Adventure by Design

[www.adventurebydesign.fi](http://www.adventurebydesign.fi)

[f adventurebydesign](#)

[@ adventurebydesign](#)

LOOKING FOR A FULL PACKAGE FOR YOUR HOLIDAY? Want to plan something special? Adventure by Design is a year-round custom tours and outdoor holiday provider in northern Finland. We love to take you to the more remote and secluded locations in the Arctic regions – away from the city lights. Whether you are looking for a guided road trip around Finland's landscapes, a private tour of the photogenic towns and countryside of Finland or a wellness oriented outdoors week, we will make it possible. We arrange custom tours and group departures in Finland, Northern Norway and Sweden.



## Harriniva Hotels & Safaris

[www.harriniva.fi](http://www.harriniva.fi)

[f HarrinivaHotelsSafaris](#)

[@ harriniva\\_official](#)

HARRINIVA HOTELS AND SAFARIS operates in the Muonio-Enontekiö area in West Lapland, directly next to and partly also inside the Pallas-Yllästunturi National Park which, according to WHO studies, has the cleanest air in the world. We think this is the best area in the world to enjoy the incredible Midnight Sun, Northern Lights and responsible tourism. With us you can experience all the best winter activities in Lapland; reindeer, snowshoes, snowmobiles, huskies and much more.



## Safartica

[www.safartica.com](http://www.safartica.com)

[f safartica](#)

[@ safartica](#)

ARE YOU LOOKING FOR SAFARIS IN LAPLAND? From a husky safari to hunting the Northern Lights, we are here to offer you most importantly one thing: pure joy. We welcome you to experience the magic of Lapland in our two destinations: Rovaniemi, known as the official hometown of Santa Claus, and Ylläs, which is a perfect getaway from the hustle and bustle of big cities. What about floating between the ice blocks under the sky full of stars, riding a snowmobile through snowy forests or meeting our furry friends for husky safari in the wilderness? Book your next adventure and get ready to be amazed!





Route 901

## TROMSØ – ALTA / ALTA – TROMSØ

Travel in comfort between the Gateway to the Arctic and the Town of the Northern Lights. Just sit back and enjoy the stunning scenery that passes by on your way to new impressions and experiences. Did you know that Alta is responsible for two of Norway's seven entries on UNESCO's World Heritage?

**STOPS**

9

**LONGEST DISTANCE**

9.5 HOURS

**AVAILABLE**

EVERY DAY  
1 DEC – 31 MAR

**PRICE**

NOK 220 – 1100

## When to catch the bus

### TROMSØ – ALTA

- 07:00 Tromsø Port 8 (nearby Scandic Ishavshotel)
- 08:10 Nordkjosbotn (Vollan Gjestestue)
- 09:00 Skibotn Circle K
- 10:45\* Kilpisjärvi (K Market)
- 12:40\* Karesuando
- 13:10\* Palojoensuu
- 13:10\* Hetta (Hetta Husky, lunch break in village)
- 15:00 Kautokeino (Thon Hotel)
- 16:30 Alta (Bus station)

\*Local Finnish Time

### ALTA – TROMSØ

- 09:00 Alta (Bus station)
- 11:00 Kautokeino (Thon Hotel)
- 15:05\* Hetta (Hetta Husky, lunch break in village)
- 15:50\* Palojoensuu
- 16:25\* Karesuando
- 18:00\* Kilpisjärvi (K Market)
- 17:45 Skibotn Circle K
- 18:15 Nordkjosbotn (Vollan Gjestestue)
- 19:45 Tromsø Port 8 (near Scandic Ishavshotel)

\*Local Finnish Time

## Along the route

Travel in comfort between the Gateway to the Arctic and the Town of the Northern Lights. Just sit back and enjoy the stunning scenery that passes by on your way to new impressions and experiences. On this route, you will experience the beauty of Finnish Lapland combined with the magic of the Norwegian county of Finnmark. This route also visits the fascinating Sami town of Kautokeino. On the route to Alta, it's possible to visit a wide range of activity providers such as snowmobile safaris, dog sledding, reindeer sledding and Sami culture, ice fishing on the frozen lakes, the Arctic tundra, traditional local food and drinks, accommodation and much more. The journey from Tromsø-Alta and vice versa is operated on new and comfortable coaches with experienced, service-oriented English-speaking drivers. For your convenience, there is an onboard toilet, Wi-Fi and hot/cold drinks and snacks are available for the passengers. We offer daily departures/arrivals at Tromsø, Nordkjosbotn, Skibotn, Kilpisjärvi, Karesuando, Palojoensuu, Hetta, Kautokeino and Alta.



OFFICIAL TOURIST INFORMATION IN THE AREA

Visit  
**TROMSØ!**

www.visittromso.no  
info@visittromso.no  
+47 77 61 00 00  
@ visittromso



www.visitalta.no  
info@visitalta  
+47 99 10 00 22  
@ visitalta



OPERATOR

  
**Bussring**

bussring.no  
post@bussring.no  
+47 400 02 196



## Vollan Gjestestue

[www.vollangjestestue.no](http://www.vollangjestestue.no)

[f](#) vollangjestestue

[@](#) vollangjestestue

IN THE MIDDLE OF THE WILDERNESS — Distance to Tromsø 70 km, Lyngen Alps 60 km, Tamokdalen 30 km and nice walking opportunities on your doorstep. The old main building was built by the Germans during World War II. The hotel is owned and operated by the third generation. It's now a combination of historic and modern facilities. We offer a menu based on traditional dishes and local ingredients. If you need some peace and quiet, we have several lounges for 4 – 60 people. We have 26 comfortable hotel rooms in the main building, including one large suite.



## Kilpis Safarit

[www.kilpissafarit.fi](http://www.kilpissafarit.fi)

[f](#) Kilpissafarit

[@](#) Kilpissafarit

IF YOU ARE LOOKING FOR THE BEST OF LAPLAND, your destination has to be Kilpisjärvi, which is a great starting point for hiking and snowmobile excursions. You can conquer the highest fells of Finland, including Mount Halti, and visit Norway and the Arctic coast. Or would you rather go ice-fishing? How about visiting a Sami village in the middle of the wilderness? Or would you prefer following a Sami reindeer herder to the fells to see reindeer in their natural habitat? Rent a snowmobile or take a guided tour with Kilpissafarit. Kilpissafarit is ready to help you with all of your wishes.



## Santa's Hotels

[www.santashotels.fi](http://www.santashotels.fi)

[f](#) santashoteltunturi

[@](#) santashotels

TRAVEL TO THE ARCTIC CIRCLE and come to relax in the Lappish nature or at the Arctic seaside. Santa's Hotels has the best holiday destinations for you: First-class dining, high-quality hotel rooms, premium glass igloos, full-service chalets and fully-equipped apartments. For more information about our hotels and what offer, please visit our website.



## Tundrea

[www.tundrea.com](http://www.tundrea.com)

[f](#) Tundrea.com

[@](#) tundreaholidayresort

TUNDREA IS A FULL-SERVICE HOLIDAY CENTRE located on the shore of Lake Kilpisjärvi, right at the bottom of the mighty Saana fell. Tundrea allows you to experience the smallness of man and the greatness of nature, without sacrificing any of your comfort. The tundra gives free roam to the mind and invites you to different activities. This makes Kilpisjärvi the ideal destination for anyone who enjoys being surrounded by nature, like skiers, hikers and photographers. Kilpisjärvi provides you with all the services a visitor may require.





## Arctic Land Adventure

[www.arcticlandadventure.com](http://www.arcticlandadventure.com)

[f arcticlandadventure](#)

[@ arcticlandadventure](#)

ARCTIC LAND ADVENTURE OFFERS GUESTS an unforgettable combination of nature, silence and luxury. Our exclusive accommodation in 4 high quality Glass Igloos is combined with 'live like a local' Reindeer Ranch visit and traditional Lappish food experience. Our experience packages are designed to give you a glimpse of the Reindeer Herder's life, offer an opportunity to be part of the nature and wildlife, to hunt the Northern Lights during winter or experience the white Arctic nights during the summer or just to relax in the sauna and outdoor hot tub by the lakeside under the Arctic sky.



## Adventure by Design

[www.adventurebydesign.fi](http://www.adventurebydesign.fi)

[f adventurebydesign](#)

[@ adventurebydesign](#)

LOOKING FOR A FULL PACKAGE FOR YOUR HOLIDAY? Want to plan something special? Adventure by Design is a year-round custom tours and outdoor holiday provider in northern Finland. We love to take you to the more remote and secluded locations in the Arctic regions – away from the city lights. Whether you are looking for a guided road trip around Finland's landscapes, a private tour of the photogenic towns and countryside of Finland or a wellness oriented outdoors week, we will make it possible. We arrange custom tours and group departures in Finland, Northern Norway and Sweden.



## Hetta Huskies

[www.hettahuskies.com](http://www.hettahuskies.com)

[f HettaHuskies](#)

[@ hettahuskies](#)

WE ARE COMMITTED TO operating and travelling in a way that is culturally, economically and environmentally responsible, with a long-term sustainability focus. Sustainability requires a holistic view of our operation and its impact on the world we live in for clients, staff, local people and our animals. Our husky safaris range in length from 2 hours to 7 days, with the shortest a 2km taster ride and the longest a 200km journey. In addition to our popular dog sledding trips, we offer a wide range of outdoor activities year-round in the vicinity of Hetta, Enontekiö.



## Lapland Hotels

[www.laplandhotels.com](http://www.laplandhotels.com)

[f laplandhotelsofficial](#)

[@ lapland\\_hotels](#)

WHETHER YOU ARE LOOKING FOR easy accommodation, central location, or some peace and quiet, our selection offers you options from hiking accommodation to luxury suites and holiday apartments. In addition, Lapland Hotels offers diverse activities and relaxation in all our destinations. The five ski resorts owned by Lapland Hotels are situated in Rovaniemi, Yllas, Pallas and Olos. Our Hetta hotel is a great place for your winter adventure. Hetta's visitors can be tempted by the wild nature that surround the hotel.



## Thon Hotel Kautokeino

[www.thonhotels.com/our-hotels/norway/kautokeino](http://www.thonhotels.com/our-hotels/norway/kautokeino)

[f thonhotels](#)

[@ thonhotels](#)

IN KAUTOKEINO, WE HAVE ONE HOTEL – Thon Hotel Kautokeino. The hotel is very conveniently located in the heart of Kautokeino's town centre, and has 63 rooms. You can take advantage of the hotel's sleekly designed conference facilities that can accommodate up to 100 people.



## Juhls Silver Gallery

[www.juhls.no](http://www.juhls.no)

[f juhlssilvergallery](#)

[@ juhlssilvergallery](#)

JUHLS SILVER GALLERY is found in the heart of the Sami region of Kautokeino in Northern Norway. It started as a modest building on the tundra in 1959 and was the first silver workshop in the region. Over the years, Regine and Frank Juhls have expanded their life's work and it grew into the unique place it is today: An architectural landmark that currently houses nine full-time goldsmiths and 5-10 other employees.



## Sokki Adventure

[www.sokkiadventure.no](http://www.sokkiadventure.no)

[f sokkiadventure](#)

[@ sokkiadventure](#)

WE WELCOME YOU TO EXPERIENCE the Sami way of life at our camp. We can offer you memorable experiences in the most precious location of Sapmi, Kautokeino. By visiting our place, you can expect magical experiences. The most unforgettable experience we introduce to you is reindeer sled ding with our very kind tamed reindeers, followed by a delicious reindeer stew around the campfire inside a cosy lavvu (Sami herdsmen's tent). You can't describe the atmosphere – it simply must be experienced.



## Hættasopplevelser

[www.hattasopplevelser.net](http://www.hattasopplevelser.net)

[f Haettasopplevelser](#)

[@ haettasopplevelser](#)

HÆTTA'S EXPERIENCES IS A Sami tour operator that started its business in 2005. We mainly focus on the group market and thus tailor tours in Kautokeino Municipality according to the needs and wishes of each group. The nature and season of Kautokeino offers great variations. We build on the environmental qualities that lie in our natural and cultural heritage resources. Through our partners, we can offer a wide range of activities all year round, including products where food is also a central and natural part of the total experience.



## Sámi Aurora

[www.samiaurora.no](http://www.samiaurora.no)

[f samiaurora](#)

[@ samiaurora](#)

WE OFFER EXCITING ACCOMMODATION in Sámi Aurora Camp and Polar Light Sledge in fantastic and magnificent nature on the Finnmarksvidda mountain plateau. Experience a comfortable polar night at Polar Light Sledge (PLS) in quiet surroundings. PLS is comfortable and can accommodate two guests, who receive service 24 hours a day. This product is available from December 2019. Please contact us via our Facebook page. Welcome to us in Kautokeino, Sápmi in Northern Norway.



## Eira Siida

[f eirasiida](#)

[@ eirasiida](#)

SMALL COSY CABINS in the middle of Sapmi in Northern Norway, 2.5 km from downtown Kautokeino. The views from the cabins are breathtaking, and the proximity to nature and the silence make the place unique. In the winter you can enjoy the Northern Lights, while in the summer the Midnight Sun is a fantastic attraction. From the cabin terrace, you can enjoy breakfast in the morning sun, the silence and the view down the Kautokeino River.



## Visit Natives

[www.visitnatives.com/feel-the-arctic](http://www.visitnatives.com/feel-the-arctic)

[f visitnatives](#)

[@ visitnatives](#)

LIVE A LIFE OF THE Sami reindeer herders in Europe's last true wilderness. The Sami family herd the reindeer in the tundra, in the middle of the wilderness in Northern Norway. Besides the immersive culture, you will explore and live from the nature that is so pure that you can even drink straight from the stream. You can come alone or with family or friends, but the experience is always intimate and unique with a native Sami family.



## Sorrisniva

[www.sorrisniva.no](http://www.sorrisniva.no)

[f Sorrisniva](#)

[@ sorrisniva](#)

SORRISNIVA IS A YEAR-ROUND adventure and food business located on the banks of the Alta River, only 20 minutes from downtown Alta. The name and the brand Sorrisniva derives from the Finnish immigration and means cascading stream. We have activities such as snowmobile safaris on the Finnmark plateau, accommodation in Sami tent and lodges, ice fishing, Northern Lights tours, Reindeer sleigh and Sami adventures. Every year we build Europe's largest and the world's northernmost ice hotel on the banks of the Alta River.



## Glød Explorer

[www.glodexplorer.no](http://www.glodexplorer.no)

 [GLODexplorer](https://www.facebook.com/GLODexplorer)

 [glodexplorer](https://www.instagram.com/glodexplorer)

GLØD EXPLORER PROVIDES quality activities and expeditions, accommodation and dining for individuals, groups and companies. From our base in Alta in Finnmark, Northern Norway, our goal is to give our guests the best possible Arctic nature-based adventures. After a trip with us, the experiences will have changed you. If you would like an alternative to a conventional hotel, we can offer you accommodation in our modern Pine Forest Apartment with sauna. If you would prefer more exotic accommodation that is an experience in its own right, we recommend our Aurora Canvas Dome.



## Trasti og Trine

[www.trastioigrine.no/en/home/](http://www.trastioigrine.no/en/home/)

 [trastioigrine](https://www.facebook.com/trastioigrine)

 [trastioigrine](https://www.instagram.com/trastioigrine)

AT TRASTI & TRINE, we have a genuine interest in taking good care of our guests, the nature, the local community and the distinctive character of Northern Norway. By giving our guests an insight into the fantastic nature and culture in Finnmark County, we want to inspire and share knowledge about sustainable use and travel without a trace. We are certified by Ecotourism Norway. This means we provide nature and culture-based experiences with a local flavour which offer authentic encounters with the nature and people.



## Holmen Husky Lodge

[www.holmenhusky.no](http://www.holmenhusky.no)

 [holmenhusky](https://www.facebook.com/holmenhusky)

 [holmenhusky](https://www.instagram.com/holmenhusky)

THERE IS NO BETTER WAY to experience nature than from the dog sled. Come and visit us in Alta and we will take you on a journey to discover the beauty of the Arctic. This is a place for both relaxation and adventure. Whether you dream of watching the Northern Lights from the comfort of a warm bed, or exploring nature with a team of huskies, we have what you need. Welcome to Holmen Husky Lodge.



## Alta Museum World Heritage Rock Art Centre

[www.altamuseum.no](http://www.altamuseum.no)

 [altamuseum](https://www.facebook.com/altamuseum)

 [altamuseum](https://www.instagram.com/altamuseum)

THE WORLD HERITAGE ROCK ART CENTRE – Alta Museum is situated in the municipality of Alta in Finnmark. The place is called Hjemmeluft, and is approx. 5 km west of downtown Alta. In the surroundings of the museum, you will find one of the five areas of rock art inscribed on the UNESCO World Heritage List in 1985. There are many things to experience at the World Heritage Rock Art Centre – Alta Museum, in summer and winter. The museum is open all year round.







Route 902

## TROMSØ – LYNGEN / LYNGEN – TROMSØ

The Tromsø – Lyngen / Lyngen – Tromsø route will give you the opportunity to experience the spectacular Lyngen peninsula with everything it has to offer when it comes to activities and accommodation. It is suitable for day trips that can be combined with other evening activities in Tromsø.

**STOPS**

5

**LONGEST DISTANCE**

2 HOURS 15 MINUTES

**AVAILABLE**

EVERY DAY  
1 DEC – 31 MAR

**PRICE**

NOK 210 – 620



## When to catch the bus

### TROMSØ – LYNGEN

- 08:45 Tromsø Port 8 (near Scandic Ishavshotel)
- 09:50 Breivikeidet (Ferry pier)
- 10:00 Ferry to Svensby
- 10:50 Svensby (Ferry pier)
- 11:00 Arr. Lyngen Resort / Aurora Spirit Distillery

### LYNGEN – TROMSØ

- 13:45 Lyngen Resort / Aurora Spirit Distillery
- 14:40 Svensby (Ferry pier)
- 14:40 Ferry to Breivikeidet
- 15:10 Breivikeidet (Ferry pier)
- 16:00 Tromsø Port 8 (near Scandic Ishavshotel)
- 18:25 Dep. Breivikeidet (Ferry pier to Tromsø)
- 19:15 Arr. Tromsø Port 8 (near Scandic Ishavshotel)

## Along the route

The Tromsø – Lyngen / Lyngen – Tromsø route will give you the opportunity to experience the spectacular Lyngen peninsula with everything it has to offer when it comes to activities and accommodation. It is suitable for day trips that can be combined with other evening activities in Tromsø. On this spectacular Lyngen route, it's possible to stop off and try a wide range of activities. Dog sledding, ice fishing, snowmobile safaris, ice climbing or Sami cultural discovery, to name but a few, not forgetting the world's northernmost whiskey distillery, the Aurora Spirit Distillery. Sit back and relax on your journey on new and comfortable coaches with experienced, service-oriented English-speaking drivers. For your convenience, there is an onboard toilet, Wi-Fi and hot/cold drinks and snacks are available for the passengers.



OFFICIAL TOURIST INFORMATION IN THE AREA

Visit  
**TROMSØ!**

www.visit tromsø.no  
info@visit tromsø.no  
+47 77 61 00 00  
@ visit tromsø



VISIT  
**LYNGEN  
FJORD**

www.visitlyngenfjord.com  
post@visit-lyngenfjord.com  
+47 77 21 08 50  
@ visitlyngenfjord



OPERATOR

  
**Bussring**

bussring.no  
post@bussring.no  
+47 400 02 196



## Tromsø Safari

[www.tromsosafari.no/welcome-tromso-safari](http://www.tromsosafari.no/welcome-tromso-safari)

[f TromsoSafari](#)

[@ tromso\\_safari](#)

TROMSØ SAFARI IS ONE OF THE leading activity companies in Tromsø with 18 years' experience and knowledge. We are locally owned and operated offering a wide range of fun and scenic day and evening activities throughout the year, embracing the natural beauty and culture of Tromsø and Northern Norway and at the same time maintaining and strengthening local pride and involvement.



## Tromsø Husky

[www.tromsosafari.no/husky-safari](http://www.tromsosafari.no/husky-safari)

[f Tromsohusky](#)

[@ tromsohusky](#)

JOIN US FOR AN EXCITING DOG SLEDDING ADVENTURE in scenic surroundings. Just a 40-minute drive from Tromsø, you will discover Tromsø Husky Farm. The view of the Lyngen Alps combined with the fjords is amazing, making this safari a genuine North Norwegian Arctic Experience. There are 120 happy Alaskan Huskies waiting for you to run and cuddle! Drive your own team of dogs through the scenic landscape. After a short explanation of how to handle the dogs and sleds, you will set off in pairs. You need to be part of the team and help the dog up the hills. It's a fun experience, but also a physical workout.



## Svensby Tursenter

[www.svensbytursenter.no/home](http://www.svensbytursenter.no/home)

[f Svensby-Tursenter-As](#)

[@ Svensby-Tursenter-As](#)

SVENSBY TURSENTER IS LOCATED in the centre of Lyngen municipality in Troms county, 400 m from the Svensby ferry pier. Svensby Tursenter is an excellent base for all kinds of activities in the area in both summer and winter, close as it is to the Lyngen Alps and with marked walking trails from the site and all around the fjord. As there is very little light pollution, there's a good chance you will see the Northern Lights from just outside your door. Svensby Tursenter offers a wide range of activities, including snowmobile safaris in the winter.



## Lyngen Adventure

[www.lyngen.com](http://www.lyngen.com)

[f lyngenadventure](#)

[@ lyngenadventure](#)

FROM RIB SAFARIS AND SEA EAGLES to the Northern Lights, cross-country skiing, ice climbing and snowmobile safaris at our magical Camp Troll. It doesn't matter if it's summer or winter, our goal is to provide you with the best experience possible. We can guarantee you cheerful and experienced guides with a focus on giving you real authentic experiences. We offer a wide range of experiences and accommodation in spectacular surroundings.



## Xlyngen

[www.xlyngen.no](http://www.xlyngen.no)

 xlyngen

 xlyngen

WHERE AMAZING PEAKS MEET the sea and light shows its magic, experience majestic mountains, enjoy the view of our fantastic fjords and feel what it's like to embrace your spirit. The polar nature is most beautiful during the winter when the polar lights shows her magical colours. We offer a wide range of activities and accommodation in spectacular surroundings in the middle of the Lyngen Alps. If you really want to be an explorer, come and visit us. Stay some nights and enjoy a snowmobile safari, Northern Light chase, ice fishing, whale safari, snowshoe hike, skiing, dog sledding or fishing trip.



## Lyngen Experience

[www.lyngenexperience.no](http://www.lyngenexperience.no)

 lyngenexperience

 lyngenexperience

LYNGEN EXPERIENCE LODGE will give you a complete Arctic experience. Our guides are ready to give you your best experiences in an amazing Arctic landscape. Join us in the hunt for the Northern Lights – one of nature's great displays. A free, multicoloured light show that is most commonly seen in the Arctic regions, which many people find is a humbling and spiritually uplifting experience. As an option, we can also offer a boat trip on the beautiful Lyngen Fjord. The combination of the Lyngen Alps and the fjord is breathtaking. Stay at our new lodge, which is situated down by the water's edge.



## Aurora Spirit Distillery

[www.bivrost.com/auroraspirit](http://www.bivrost.com/auroraspirit)

 auroraspiritnorway

 auroraspirit-as

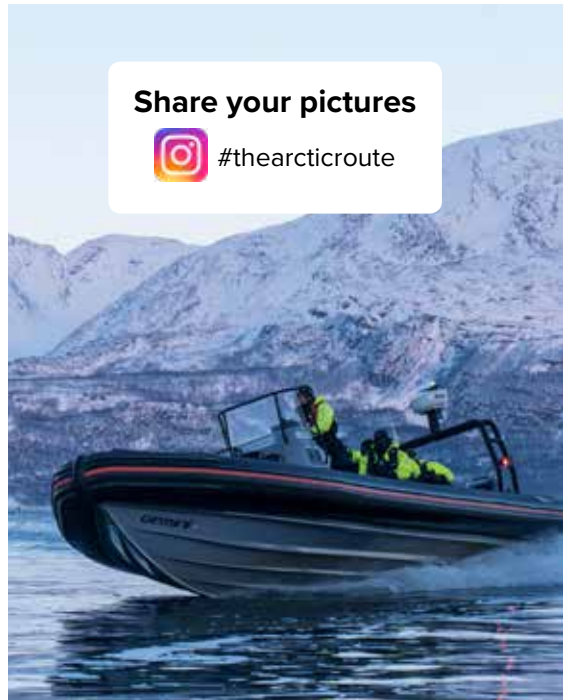
A DAY TRIP FROM TROMSØ – packed with adventures. Aurora Spirit Distillery has established the most modern and northernmost distillery in the world. On the Arctic Distillation experience, one of our qualified staff members will guide you through the process of manufacturing Arctic alcohol. You'll also get a glimpse of the mysterious past of Viking Age drinking customs and making moonshine in Northern Norway. After the tour, you will enjoy a good meal and have the option of participating in other exciting activities or just relaxing at the visitor centre.



Share your pictures



#thearticroute





## ROVANIEMI – LULEÅ / LULEÅ – ROVANIEMI

The bus route between Rovaniemi and Luleå gives you the opportunity to travel in a comfortable and environmentally friendly way between these two exciting cities. There is a train connection in both Rovaniemi and Luleå.

**STOPS**

8

**LONGEST DISTANCE**

4 HOURS

**AVAILABLE**

EVERY DAY  
1 DEC – 15 MAR

**PRICE**

€ 15 – 55

## When to catch the bus

### ROVANIEMI – LULEÅ

- 07:10 Napapiiri / Santa Claus Village
- 07:20 Hotel Santa Claus
- 07:30 Rovaniemi bus station
- 09:10 Tornio/Haparanda bus station
- 09:20 Tornio/Haparanda bus station
- 09:00\* Kalix bus station
- 10:00\* Luleå railway station
- 10:20\* Luleå airport – Kallax

\*Local Swedish Time

### LULEÅ – ROVANIEMI

- 11:00 Luleå airport Kallax
- 11:30 Luleå railway station
- 12:30 Kalix bus station
- 14:10\*\* Tornio/Haparanda bus station
- 14:20\*\* Tornio/Haparanda bus station
- 16:00\*\* Rovaniemi bus station
- 16:05\*\* Hotel Santa Claus
- 16:15\*\* Rovaniemi airport
- 16:20\*\* Napapiiri/Santa Claus Village

\*\* Local Finnish Time

## Along the route

The bus route between Rovaniemi and Luleå gives you the opportunity to travel in a comfortable and environmentally friendly way between these two exciting cities. This route connects the Finnish capital of Lapland and the Swedish capital of Lapland and takes you from the deep Finnish forests to the shores of the Gulf of Bothnia. Whether you want to visit Santa Claus or the World Heritage Gammelstad Church Town, we offer you a comfortable journey between these lovely cities. Both Luleå and Rovaniemi are worth a visit on your trip to the Arctic. The route connects to trains in both Rovaniemi and Luleå. We offer daily departures/arrivals at Napapiiri/Santa Claus Village, Hotel Santa Claus, Rovaniemi bus station, Tornio/Haparanda bus station, Kalix bus station, Luleå railway station and Luleå Airport – Kallax.



### OFFICIAL TOURIST INFORMATION IN THE AREA



[www.visitrovaniemi.fi](http://www.visitrovaniemi.fi)  
[info@visitrovaniemi.fi](mailto:info@visitrovaniemi.fi)  
 +358 (0) 16 346 270  
 @ visitrovaniemi



[visitlulea.se/sv/turistinformation](http://visitlulea.se/sv/turistinformation)  
[turistcenter@lulea.se](mailto:turistcenter@lulea.se)  
 @ visitlulea



[haparandatornio.com](http://haparandatornio.com)  
[info@haparandatornio.com](mailto:info@haparandatornio.com)  
 SWE +46 922 262 00  
 FIN +358 50 590 0562  
 @ haparandatornio



### OPERATOR



[www.eskelisen.fi](http://www.eskelisen.fi)  
[info@eskelisen.fi](mailto:info@eskelisen.fi)  
 +358 16 3422 160





### Kemi SnowCastle Resort

[www.experience365.fi/snowcastle-resort/](http://www.experience365.fi/snowcastle-resort/)

 LumiLinnaSnowCastle

 kemin-lumilinna-the-snowcastle-of-kemi

AT THE NORTHERN END of the Gulf of Bothnia lies Kemi, home to the largest snow castle in the world. Only 90 minutes south of the Arctic Circle, this town is the gateway to the last great wilderness of Europe. With award-winning accommodation, historic wooden buildings by the seaside, regal attractions and convenient travel connections, Kemi is truly the pearl of the Finland’s northernmost region. The SnowCastle Resort offers a wide range of activities and accommodation all year round.



### Kalix

[www.heartoflapland.com/destinations/kalix](http://www.heartoflapland.com/destinations/kalix)

 heartoflapland

 heartoflapland

WHERE THE RIVER MEETS THE SEA lies the small town of Kalix. The town offers fantastic beaches, a beautiful archipelago with plenty of islands to visit, unique small town shopping, and lots of activities that attract both locals and visitors to the area. Kalix is famous for its caviar, Kalix Ljörom, a prized delicacy with Protected Designation of Origin (PDO) status, issued by the European Union. It is healthy both for you and our nature, and is served at special occasions such as the Nobel banquet, royal weddings and other celebrations. Don’t miss the Roe Safari, a safari like no other where you can taste the red gold.



Share your pictures



#thearticroute



## NARVIK – LULEÅ / LULEÅ – NARVIK

Travel across the northernmost region of Europe and see the untamed natural wilderness of Swedish Lapland on one of the greatest rail journeys in the world: The Arctic Circle Train.

Combine this spectacular scenery with a skiing trip or a whale watching safari. Kiruna is the place to experience the Midnight Sun, or the Polar Night and the fantastic Northern Lights as they illuminate the skies with cascades of colour.

**STOPS**

23

**LONGEST DISTANCE**

7 HOURS

**AVAILABLE**

EVERY DAY  
YEAR-ROUND

## When to catch the train

### NARVIK – LULEÅ

10:52 / 15:15 - Narvik  
 11:43 / 16:00 - Riksgränsen  
 12:12 / 16:28 - Björkliden  
 12:22 / 16:38 - Abisko  
 13:47 / 18:32 - Kiruna  
 15:22 / 19:51 - Gällivare  
 17:22 / 21:57 - Boden C  
 17:56 / 22:24 - Luleå

### LULEÅ – NARVIK

05:09 / 10:03 - Luleå  
 06:00 / 10:34 - Boden C  
 08:04 / 13:17 - Gällivare  
 09:29 / 14:49 - Kiruna  
 11:14 / 15:59 - Abisko  
 11:24 / 16:08 - Björkliden  
 12:06 / 16:46 - Riksgränsen  
 12:54 / 17:37 - Narvik

#### OPERATOR



www.sj.se  
 kundeservice@sj.se  
 +46771 75 75 75



## Along the route

Travel across the northernmost region of Europe and see the untamed natural wilderness of Swedish Lapland on one of the greatest rail journeys in the world: The Arctic Circle Train. Combine this spectacular scenery with a skiing trip or a whale watching safari. Kiruna is the place to experience the Midnight Sun, or the Polar Night and the fantastic Northern Lights as they illuminate the skies with cascades of colour. A great way to explore the Arctic area is by train, specifically the Arctic Circle Train. Known as one of the greatest train journeys in the world, the Arctic Circle Train carries travellers along stunning fjords, near frozen glaciers, under icy waterfalls and whisks you past fairytale towns. It offers stunning scenery of Lapland and lets you see many of the rural parts of Scandinavia that are not accessible by cars. The Arctic Circle Train is also a great way to get from one Arctic town to another and you might even have the chance to spot the Aurora Borealis from your train window. The Arctic Circle train is part of SJ's network of train routes in Scandinavia and allows you to travel between Narvik and Luleå in a comfortable and environmentally friendly way. The end stations of The Arctic Train both correspond with The Arctic Route: Luleå to Rovaniemi and Narvik to Tromsø. The Arctic Circle Train has daily departures/arrivals at Narvik, Riksgränsen, Björkliden, Abisko, Kiruna, Gällivare, Boden and Luleå.



### OFFICIAL TOURIST INFORMATION IN THE AREA

Luleå

www.visitlulea.se/sv/  
 turistinformation  
 turistcenter@lulea.se  
 @ visitlulea



NARVIK  
 ARCTIC EXPERIENCE

www.visitnarvik.com  
 post@visitnarvik.com  
 +47 76 96 56 00  
 @ visitnarvik



IN SWEDISH LAPLAND  
 BODEN

www.upplevboden.nu  
 info@upplevboden.nu  
 +46 921-624 10  
 @ upplevboden



POWERED BY ARCTIC  
 GÄLLIVARE-  
 TURISTCENTER  
 JÄLLIMÄÄRÄ JELLEVARRE VÄHTJER JELIMÄÄRÄ

welcometogallivare.com  
 info@welcometogallivare.com  
 +46 (0)970-102 20  
 @ gallivareturistcenter



KIRUNA  
 in Swedish Lapland

www.kirunalapland.se  
 info@kirunalapland.se  
 +46 (0)980-188 80  
 @ visit\_kiruna



## Icehotel

[www.icehotel.com](http://www.icehotel.com)

[f icehotel.sweden](https://www.facebook.com/icehotel.sweden)

[@ icehotelsweden](https://www.instagram.com/icehotelsweden)

LIFE ENRICHING MOMENTS – A hotel and art exhibition made of ice from the river Torne, each year reincarnated in a brand new design. A place to discover silence, Northern Lights, glistening snow clad forests, reindeer, cloudberry, kettle coffee and much more. Spend an unforgettable night inside the 30<sup>th</sup> rendition of the original ICEHOTEL, experience our exhibitions and explore our different activities.



## Visit Abisko

[www.visitabisko.com](http://www.visitabisko.com)

[f visitabisko](https://www.facebook.com/visitabisko)

[@ visitabisko](https://www.instagram.com/visitabisko)

WELCOME TO ABISKO IN SWEDEN, the home of Abisko National Park, the Aurora Sky Station, Abisko Mountain Station and much more. Join us and chase the Auroras, meet local reindeer herders and their animals or travel to the Norwegian fjords through the mesmerizing mountain scenery of the Arctic. Working closely with a number of local suppliers in Abisko means that we can also offer activities such as dog sledding, snowmobiling, aurora photography and much more. It's all available on our website – your next adventure is only clicks away!



## The Arctic Circle Train

<https://www.sj.se/en/we-offer/arctic-circle.html>

[f sj](https://www.facebook.com/sj)

[@ resmedsj](https://www.instagram.com/resmedsj)

A GREAT WAY TO EXPLORE the Arctic region is by train, specifically the Arctic Circle Train. Known as one of the greatest train journeys in the world, the Arctic Circle Train carries travellers along stunning fjords, near frozen glaciers, under icy waterfalls and whisks you past fairytale towns. It offers stunning scenery of Lapland and lets you see many of the rural parts of Scandinavia that are not accessible by cars. It is also a great way to get from one Arctic town to another and you might even have the chance to spot the Aurora Borealis from your train window.



## Visit Kiruna

[www.visitkiruna.com](http://www.visitkiruna.com)

[f TheVisitKiruna](https://www.facebook.com/TheVisitKiruna)

[@ visit\\_kiruna](https://www.instagram.com/visit_kiruna)

WELCOME TO KIRUNA, the beating heart of Swedish Lapland, home of the Northern Lights, the world-famous ICEHOTEL and the largest underground iron ore mine in the world. Kiruna is also the gateway to Abisko National Park, the world's top rated aurora borealis destination. Visit Kiruna is the one stop-shop for information you will need when visiting the Kiruna Lapland region. Take a look at our website where you will find information about transportation, accommodation and activities.





## Lapland Resorts Rigsgränsen

[www.riksgransen.se](http://www.riksgransen.se)

[f riksgansen](#)

[@ riksgansen.se](#)

THE PROBLEM THAT BECAME A WORLD ATTRACTION – Riksgränsen is an extraordinary place. The vast amounts of snow that once emptied the place are now the attraction that draws hundreds of thousands of visitors. The Ofotenbanan railway, finished in 1902, was in one way the first milestone in the development of Riksgränsen. However, it took another 26 years until the Swedish Ski Club Kiruna division could offer overnight stays in the area. The first ski lift was installed in 1952 and the rest is history. Nowadays, a century later, the depopulated dump Riksgränsen has become a world-class metropolis for skiing and outdoor recreation.



## Narvikfjellet

[www.narvikfjellet.no](http://www.narvikfjellet.no)

[f Narvikfjellet](#)

[@ Narvikfjellet](#)

WE ARE NORWAY'S MOST URBAN SKI RESORT, a unique destination for piste and off-piste skiing overlooking the sea, for Northern Lights experiences, and a place to enjoy the beautiful Midnight Sun. Narvikfjellet is located north of the Arctic Circle, overlooking the town of Narvik. During the wintertime, the Polar Nights give us magical moments on the crisp white snow - with skis, around the fire, with snowshoes, or on a snow racer. During the summer, the Midnight Sun gives us 24 hours of daylight, which makes it possible to enjoy the mountain for activities like hiking, running, cycling and climbing all day and all night.



## Lapland Resort Björkliden Fjällby

[www.bjorkkliden.com](http://www.bjorkkliden.com)

[f bjorkkliden.fjallby](#)

[@ bjorkkliden\\_fjallby](#)

EXTREME OR RELAXED? Irrespective of whether you are a highly experienced mountaineer or a novice to the great wilderness, we have something to offer you, during the summer and winter alike. Björkliden has been a tourist magnet literally since your grandparents were young. Plenty of traditions and heritage have given us much experience which, combined with constant development, has brought us to where we are at present. We provide memorable experiences for families, conference groups and extreme skiers. There is much more to add, but Björkliden should be experienced at first sight.



Share your pictures



#thearticroute



# Presentation of the Visit companies

## Visit Tromsø

[www.visit tromsø.no](http://www.visit tromsø.no) [f](#) visit tromsø [@](#) visit tromsø

The Arctic Capital offers the ultimate combination of urban city life and breathtaking nature. Rated the world's third best destination for experience holidays by the users of Trip Advisor, Tromsø is the perfect place to release your inner explorer. Take the cable car up to a mountain plateau 421 m above sea level to enjoy the panoramic views of Tromsø and the surrounding area. Explore the local culture, enjoy the pulsating city centre, chase the Northern Lights or go on a dog sled ride and feel what it's like to be a musher. Drop into the official tourist information centre to get the best tips on how to make the most of your Arctic Adventure. We can help you book your perfect selection of activities. Welcome to Tromsø!



## Visit Lyngenfjord

[www.visit-lyngenfjord.com](http://www.visit-lyngenfjord.com) [f](#) visitlyngenfjord [@](#) visitlyngenfjord

Experience the Lyngenfjord region - a jewel between Tromsø and Alta. Come and visit the beautiful Lyngenfjord region with the majestic Lyngen Alps and the Northern Light hotspot of the Skibotn valley. The Lyngen Alps rising to 1800 m provide the backdrop for many thrilling winter experiences, as well as comfortable and extraordinary accommodation. On the eastern side of the Lyngenfjord, the Skibotn valley, known as the best place to watch the Northern Lights due to the dry climate, leads you to Finland from where you can visit Kilpisjärvi and the three-country cairn between Norway, Finland and Sweden.



## Visit Senja

[www.visitsenja.no](http://www.visitsenja.no) [f](#) visitsenja [@](#) visitsenjaregion

Senja is a region filled with contrasts and often referred to as a Norway in miniature; From steep mountains plunging deep in to the sea to lush landscapes with dense forests and fjords. With all these mighty and photogenic landscapes and places worth a visit, be sure to have enough time on your hands to explore Senja and Dyrøy! Make the most of your stay with great activities and a comfortable bed to sleep in! Welcome!



## Visit Alta

[www.visitalta.no](http://www.visitalta.no)  VisitAlta  Visitalta

Welcome to Alta the cradle of the Northern Light. We have found rock carvings telling us about the life here 7-8,000 year ago and to this day we live the same wonderful outdoor life in modern packages. In the Alta region you can explore different environments from the sea, to rivers, valleys, high peaks and the silence and endless views on the Finnmarksvidda mountain plateau. Our team can create unique experiences and we welcome you all year round to join us. Look on Instagram and Facebook to be inspired by the activities we offer.



## Visit Narvik

[www.visitnarvik.no](http://www.visitnarvik.no)  visitnarvik  visitnarvik

Welcome to the Narvik region, located in the Arctic landscape of Northern Norway. The Narvik region is a region of contrasts, surrounded by astonishing nature, steep mountains and beautiful fjords. With this amazing nature as the backdrop, the region can offer a wide range of activities and experiences throughout the year. The Ofoten railway is a combination of spectacular Arctic nature with dramatic WW2 history and will please nature lovers and history buffs alike. You'll find lots of activities perfectly suited for families. And you won't be disappointed if you're looking for classic Arctic experiences such as husky-sledding, Sami experiences, tobogganing and Northern Lights experiences. For more travel inspiration go to [www.visitnarvik.com](http://www.visitnarvik.com)!



## Visit Rovaniemi

[www.visitrovaniemi.fi](http://www.visitrovaniemi.fi)  VisitRovaniemi.fi  visitrovaniemi

Rovaniemi, the hometown of Santa Claus, is the world's leading Christmas-themed travel destination, and a destination held in high esteem by local inhabitants and tourists alike. Visit Rovaniemi is the local tourist board of the Rovaniemi region in Lapland, Finland. The marketing and communications for this renowned holiday, conference and incentive travel destination is managed by Visit Rovaniemi. Come and visit in order to find out what to do in Rovaniemi.



## Visit Levi

[www.levi.fi](http://www.levi.fi)  levilapland  levilapland

Levi is a year-round activity resort and the biggest ski resort in Finland, Lapland. When you need help or inspiration during your stay in Levi Lapland, Visit Levi and the Levi Tourist Office is a good place to start. Our friendly travel advisors will answer your questions concerning excursions, itineraries, skiing tracks, biking and walking routes, sightseeing as well as timetables, opening hours and places to eat. The Levi Tourist Office is located on the left hand-side of Levi's main roundabout if you are arriving in Levi from the south. The Levi Tourist Office acts as an agent for Levi's wide range of accommodation alternatives and programme services.





## Bussring

Bussring AS is the largest, locally owned coach company in Northern Norway offering all kind of transport services in the Arctic region. The company, established in 1957, is still run by the same family. We consider the whole of the Arctic region as our home market and our coaches operate in Norway, Finland and Sweden. Since June 2016, Bussring has also operated the Airport Express service in Tromsø, a year-around service covering all arrivals and departures at Tromsø Airport Langnes. In 2016, Bussring started The Arctic Route, which now offers daily service between many destinations in the Arctic region. Our headquarters are in Tromsø, and we have more than 45 vehicles of different types and sizes that travel approx. 2 million km each year. Most of our vehicles are less than three years old and satisfy the most stringent environmental standards, Euro 6. On board the coaches there are modern facilities, such as adjustable seats with seat belts, air-conditioning/heating, toilet, video, fridge, coffee machine and Wi-Fi, in addition to panoramic views. Our professional, experienced and friendly drivers always put safety first when providing the best service to our customers. Our drivers are highly trained and qualified when it comes to driving in Arctic winter conditions. We always aim for “world-class delivery”.

## Operators

*Eskelisen*  
**LAPIN LINJAT**



## Eskelisen Lapin Linjat

Eskelisen Lapin Linjat OY is one of the largest transport companies offering scheduled routes and coach charter services in Lapland. The company, established in 1928, is still run by the same family – now in its third generation. Our home ground is Lapland and the North Calotte Area. Our route network reaches all the way from Helsinki, Oulu and Rovaniemi to the shores of the North Atlantic and Barents Sea, to such places as Nordkapp, Tromsø, Vadsø and Luleå. Even though our routes have expanded, our fleet has increased, and the number of kilometres has broken records, a few things have remained unchanged; our willingness to serve travellers by offering scheduled routes and coach charter services, and the location of our headquarters. Our modern, well-equipped coach charters are available for domestic and international journeys. All coaches are equipped with safety belts, toilet, refrigerator, DVD, radio/CS and microphone, in addition to heating and air-conditioning. Professional and experienced drivers are at your service and are there to ensure you have a safe and comfortable trip. With the experience of 90 years and millions of kilometres, we can say we know the roads of Lapland like the backs of our hands.



## Statens Järnveger – SJ

SJ is a limited liability company owned by the Swedish state and is tasked with operating profitable passenger rail services, both independently and on behalf of national and regional traffic authorities. As the market-leading train operating company, SJ links Sweden together, and opens the doors to Scandinavia's capitals: Stockholm, Copenhagen and Oslo. These links create opportunities for people to live, work or study in different places and to travel in a convenient and sustainable manner. SJ is part of the solution for meeting Sweden's climate targets and all our trains in Sweden carry the Good Environmental Choice (Bra Miljöval) label.

# FAQ – The Arctic Route

## How do I find the right bus?

All buses are marked with the Arctic Route logo and route number.

## Are refreshments served on board the buses?

Yes, hot and cold drinks and some light snacks will be available.

## How much does a ticket cost?

It depends on how far you will travel and which route you choose. Return tickets vary from NOK 210 - 1,400.

## Where do I buy a ticket?

Tickets can be purchased online at <https://www.thearcticroute.com/> Packages containing activities and bus transport can be booked online at various Visit companies, at the individual suppliers you wish to visit or by visiting the tourist information offices.

## How much luggage can I carry?

There is no limit on the number of luggage, but only a small bag (hand luggage) is allowed into the bus.

## Is there a toilet on the buses?

Yes, there are toilets on all the buses on the Arctic Route. There will also be stops along the way to stretch your legs.

## How many stops are there?

It depends on which route you choose, but there are between 5 and 10 stops. The total time per route varies between 45 minutes (Tromsø–Lyngen) and 11.5 hours (Tromsø–Rovaniemi).

## Can I spend the night on the road?

Yes, you can. You can split up your journey by taking part in one of our partner's wonderful experiences, staying overnight and then catching the bus the following day. Book activities and accommodation directly at the relevant provider.

## Are the buses disability friendly?

None of the buses have facilities for carrying passengers in a wheelchair. Beyond that, there are no restrictions related to disability.

## What can I experience along the way?

There is a large range of experiences you can do along the way, either as a day trip from for instance Tromsø or Narvik, or by choosing to stay overnight and then continue or return another day. You can experience beautiful and spectacular scenery from the bus. If you want to take part in an activity, our partners can offer dog sledding, ice climbing, Northern Lights excursions, Sami culture, ice fishing, cross-country and downhill skiing, visits to Santa Claus, the world's northernmost distillery and wildlife park and much more.

## Which is the best route?

It depends on where you want to travel, and whether you wish to visit one place or stop along the way and see many places by using the buses as environmentally friendly transport. Our routes cover the northern areas in Norway, Sweden and Finland, and you can visit Tromsø, Narvik, Lyngen, Alta, Rovaniemi and Luleå. The Narvik–Luleå route is served by train, while all the other routes are by bus.

## When can I travel on the various routes?

The routes are serviced daily from 1 December–31 March. The exception is the train route between Narvik and Luleå, which runs daily year-round.

## Are there guides on board?

No, there are no guides on board the buses. The buses on the Tromsø–Narvik/Narvik–Tromsø route are equipped with an online guiding system. Our drivers have good knowledge of the routes will gladly share this with our guests.

## Do the buses travel all the way to the different experiences?

Yes. However, in some places you will have to change bus. This only applies to the Tromsø – Narvik route.

## What does the ticket price include?

The ticket is for travel on the chosen route by bus or train. The bus routes are operated using comfortable, modern buses and dedicated drivers who know the routes well. You will be offered complimentary hot and cold drinks and light snacks. You can either travel your chosen route on the same day or spread your journey over several days at no extra cost. In addition to the journey itself, you may buy packages containing experiences and accommodation via our partners.

## Can we bring animals on the trip?

It is only permitted if the animals travel in cages that are transported in the hold. However, this is not recommended because it can get very cold in the load compartment.









# Photo credits

## Front cover

Rolf Gunnar Wilhelmssen

## Page 4

Upper left, Frank Rune Isaksen  
Upper right, Lapphaugen Tourist Station  
Middle left, Visit Rovaniemi  
Middle left top, Simon Infanger  
Middle left bottom, Aurora Spirit Whisky Distillery  
Middle right, Visit Rovaniemi  
Lower left, Robson Hatsukami Morgan  
Lower right top, Joao Monteiro  
Lower right bottom, Polarpark

## Page 5

Upper left, Aurora Spirit Whisky Distillery  
Upper middle, Cyprien Delaporte  
Upper right, Visit Rovaniemi  
Middle right top, Ludovic Charlet  
Middle right bottom, Vidar Nordli Mathisen  
Lower left, Pasi Ikonen, Hetta Huskies  
Lower right, Daniel Vogel

## Page 10

Rolf Gunnar Wilhelmssen

## Page 11

Upper left, Tromsø Safari  
Lower left, Destination Snowman  
Upper right, Vollan Gjestestue  
Lower right, Målselv Fjellandsby

## Page 12

Upper left, Off Track Experience  
Lower left, Tommy Simonsen  
Upper right, Senjafoto  
Lower right, Kjetil Skogli

## Page 13

Upper left, Bård Løken  
Middle left, Visit Narvik  
Lower left, Oliver Koch  
Upper right, Narvikfjellet  
Middle right, Oliver Koch  
Lower right, Jan Holte

## Page 15

Left, Rolf Gunnar Wilhelmssen  
Right, Eskelisen Lapin Linjat

## Page 16

Upper left, Kilpis Safarit  
Lower left, Tundrea  
Upper right, Santa Claus Hotels  
Lower right, Lapland Hotels

## Page 17

Upper left, Arctic Land Adventure  
Lower left, Harriniva Hotels & Safari  
Upper right, Adventure By Design  
Lower right, Safarctica

## Page 19

Rolf Gunnar Wilhelmssen

## Page 20

Upper left, Vollan Gjestestue  
Lower left, Santa Hotels  
Upper right, Kilpis Safarit  
Lower right, Tundrea

## Page 21

Upper left, Arctic Land Adventure  
Lower left, Hetta Huskies  
Upper right, Adventure By Design  
Lower right, Lapland Hotels

## Page 22

Upper left, Thon Hotel Kautokeino  
Lower left, Sokki Adventure  
Upper right, Juhls Silver Gallery  
Lower right, Hættasopplevelser

## Page 23

Upper left, Sámi Aurora  
Lower left, Eira Siida  
Upper right, Visit Natives  
Lower right, Sorrisniva

## Page 24

Upper left, Glød Explorer  
Lower left, Holmen Husky Lodge  
Upper right, Trasti og Trine  
Lower right, Alta Museum

## Page 26

Rolf Gunnar Wilhelmssen

## Page 27

Upper left, Tromsø Safari  
Lower left, Svensby Tursenter  
Upper right, Tromsø Safari  
Lower right, Lyngen Adventure

## Page 28

Upper left, Alexander Müller  
Lower left, Aurora Spirit Whisky Distillery  
Upper right, Lyngen Experience  
Lower right, Lyngen Adventure

## Page 30

Eskelisen Lapin Linjat

## Page 31

Upper left, Kemi Snowcastle Resort  
Lower left, Visit Rovaniemi  
Upper right, www.heartofflapland.com  
Lower right, Visit Rovaniemi

## Page 33

Staten Järnveger (SJ)

## Page 34

Upper left, Asaf Kliger | © ICEHOTEL  
Lower left, Visit Abisko  
Upper right, Staten Järnveger (SJ)  
Lower right, Visit Kiruna

## Page 35

Upper left, Laplan Resort Rigsgränsen  
Lower left, Lapland Resort Björkliden Fjällby  
Upper right, Narvikfjellet  
Lower right, Visit Levi

## Page 36

Upper, Vegard Stien © Visit Tromsø  
Middle, Visit Lyngenfjord  
Lower, Visit Alta

## Page 37

Upper, Visit Alta  
Middle, Michel Ulriksen  
Middle, Visit Rovaniemi  
Lower, Visit Levi

## Page 38

Upper left, Rolf Gunnar Wilhelmssen  
Upper middle, Eskelisen Lapin Linjat  
Upper right, Statens Järnveger – SJ

## Page 39

Upper, Rolf Gunnar Wilhelmssen  
Middle, Eskelisen Lapin Linjat  
Lower, Statens Järnveger (SJ)

## Page 40

Upper left, Visit Rovaniemi  
Middle left, Visit Rovaniemi  
Middle right, Visit Levi  
Lower left, Bjørn Are Andreassen  
Lower right, Visit Levi

## Page 41

Upper left, Visit Rovaniemi  
Upper right, Joao Monteiro  
Middle left, Visit Levi  
Lower left, Lyngen Adventure  
Lower right, Statens Järnveger (SJ)

## Back cover

Visit Rovaniemi



**BOOK YOUR TOUR TODAY**

# HAVE A NICE TRIP

The Arctic Route

[www.thearcticroute.com](http://www.thearcticroute.com)

[f thearcticroute](https://www.facebook.com/thearcticroute)

[@ thearcticroute](https://www.instagram.com/thearcticroute)

