

THE Companion ^{Issue} 40



Canine
Companions®



Winter 2021

Change for GOOD

While the past year and a half has been challenging, it has inspired us to grow in ways we might never have considered. Change continues to be a constant, but hope is just as strong. It keeps us focused on the end game – placing expertly trained service dogs and facility dogs at no cost to our clients.

The entire staff at Canine Companions uses years of experience and knowledge, combined with passion for our mission, to find new ways to serve people with disabilities. The result of that work has led to a stronger Canine Companions community, thriving in the face of anything that comes our way.

We continue to lead through cutting-edge research ([read more on page 15](#)) to identify traits that may help place more service dogs with children, adults and veterans who need them. Not only does this important research benefit our organization – it benefits the entire service dog industry and those waiting for a life-changing service dog.

We identify unique opportunities to work with our partners to engage more people and share our mission. These



collaborations support our dedicated volunteers, staff, donors and clients ([read more on page 14](#)). By providing services, products and support, our partners work with us to increase the reach of our mission.

Canine Companions is leading the way so even more people with disabilities can partner with a service dog, but we couldn't do so without you. Your passion and generosity, commitment to our mission, and your support are changing lives. As the stories in this publication show, you have an impact on the lives of our clients.

We're not just placing service dogs; rather, we are building a robust, welcoming network of people who want to make positive change. Two young women have developed an unbreakable bond as puppy raiser and service dog graduate, thanks to one donor who made it possible to raise

Canine Companions puppies at the University of Central Florida ([read their story on page 7](#)).

Change is inevitable. We strive to adapt to every hurdle and find we're in tune with our clients, supporters and volunteers more than ever. We have learned so much from the challenges we have all faced, and much of what we've learned will continue to guide us in 2022 and beyond. Your support this holiday season will help empower people with disabilities to live life to the fullest, thanks to their four-legged best friend. We are grateful for each and every one of you.

Best regards,

Paiae Mazzoni, Chief Executive Officer

John McKinney, Board Chair

A Family Gives Back

Colleen Shannon has a progressive neurological disease that causes loss of function in her hands, feet, arms and legs. Colleen shares, "There were times that I woke up and couldn't move my legs. That was scary for me and for my kids." In 2019, Colleen was matched with Service Dog Amador, who picks up dropped items, opens doors and helps her be more independent.

Colleen often uses crutches, and with her limited dexterity, dropping them is a common occurrence. In the past, she would fall trying to pick them up. Enter Service Dog Amador, who happily retrieves her crutches with a wagging tail. Colleen shares, "Amador does so much for me. I can still get up the stairs in my house, but I can't carry anything with me when I do. Amador can pull a basket full of laundry up the stairs to the bedroom." She continues, "If I leave my phone upstairs, and I'm downstairs, I can tell Amador 'phone,' and he'll go get it and bring it to me."

Colleen is thrilled that Amador helps provide independence not just for her, but for her kids as well. "When I used to take them places, a lot of their attention was focused on me and if I needed help. Amador frees them up to be kids. As a mom, that's huge!"

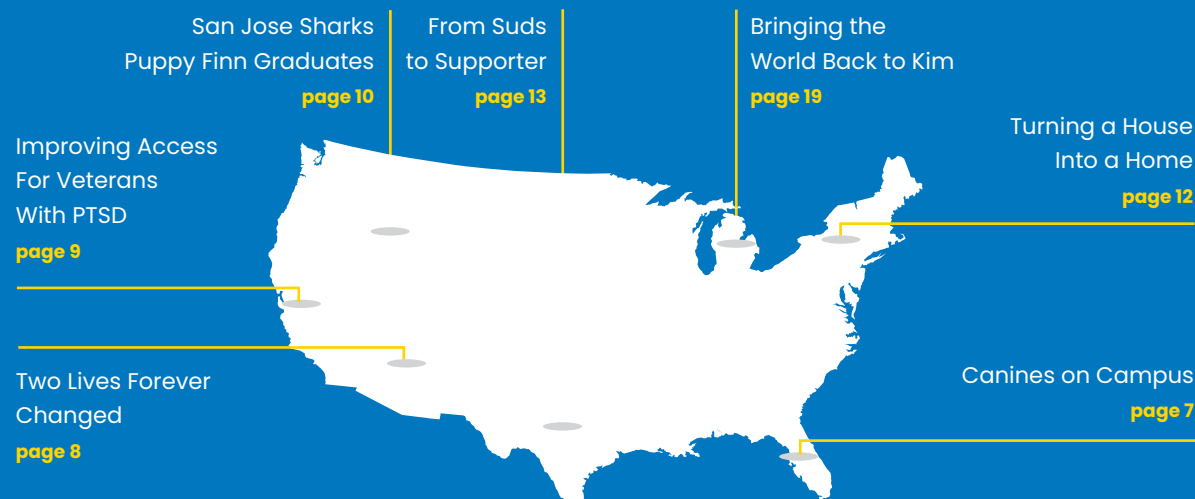
After seeing the impact Service Dog Amador had on their mom, Colleen's daughters, 15-year-old Kiera and 13-year-old Meghan, were certain they wanted to raise a puppy for Canine Companions to help someone else receive an expertly trained service dog. With Colleen, the two began raising puppy Dima in June. Colleen shares, "It means a lot to me to be giving back to someone else. To be giving the independence, freedom, love and partnership that Amador has given to me feels incredible."

Learn more about volunteer puppy raising at canine.org/raise.



"It means a lot to me to be giving back to someone else. To be giving the independence, freedom, love and partnership that Amador has given to me feels incredible."

HIGHLIGHTS



2021 by the Numbers (to date)

- > 309 total working dog placements.
- > 103 projected number of Team Training classes by December.
- > 1,220 graduate follow-ups.
- > 602 dogs entered professional training.
- > 561 puppies born.

The Best Decision for *Ellie*

Two big decisions would change the lives of two people forever. In 2014, Rebecca Kuntz began fostering an 18-month-old girl named Ellie living with cerebral palsy in Ghana. Rebecca officially adopted Ellie and stayed in Ghana until Ellie was 4 years old and was able to immigrate to the United States.

"In Ghana, we didn't have access to much medical care, school or therapy services, so it was such a relief to arrive in the U.S. and start treatments," Rebecca says.

Rebecca learned about Canine Companions service dogs trained to help kids with disabilities when she saw teams around their hometown in Illinois. That's when the second decision was made that changed their lives profoundly. She decided to apply, and Ellie and Rebecca were matched with Canine Companions Service Dog Rupert in 2020. Rupert is trained in 45 commands to increase independence for Ellie, and he has provided much more.

"Rupert has been the greatest blessing and a huge change in our lives," Rebecca remarks.

"I can't remember what life was before him, because he has taken every aspect of our life and made it so much better for Ellie."

Part of the family's routine includes Ellie's inpatient and outpatient physical therapy, occupational therapy and speech therapy every week. Rupert hasn't missed one appointment.

"Ellie's therapist integrates Rupert into many activities, like bowling, doing puzzles, crawling, walking and sitting," Rebecca continues, "Ellie is so much more motivated and has been meeting so many amazing milestones just in the last year that we've had Rupert. Previously, those milestones may have taken her two or three years to meet. Rupert is Ellie's greatest motivator and best friend."



At home, Rupert helps Ellie pick up dropped items and assists with deep pressure. "Rupert puts his whole body over her legs," says Rebecca. "Ellie often has leg spasms that are really painful. When she's having those, Ellie wants Rupert to apply deep pressure on her legs. He calms her down pretty quickly."

Rupert is a constant friend to Ellie. When she goes to bed, Rupert is right there next to her, making sure she falls asleep. It's an unbreakable bond.

"I can't remember what life was before him, because he has taken every aspect of our life and made it so much better for Ellie."

There are hundreds of children in need of a service dog like Rupert to help increase independence and quality of life. Rupert, like all Canine Companions service dogs, was provided to Ellie and Rebecca entirely free of charge. Your support makes these amazing matches possible.

Give today so children with disabilities can live their lives to the fullest. Return the enclosed envelope in this magazine or visit [canine.org/donate](https://www.canine.org/donate).



A Different Kind of Lesson

A good teacher can inspire students in many ways and make an impact for years to come. That is exactly what fourth grade teacher Stacy Napoles did for a student nearly 15 years ago.

In 2007, Stacy was raising Canine Companions puppy Boulder, and she brought him to her elementary school classroom each day. At the time, Stacy had no idea that she was laying the foundation for a young student and future Canine Companions puppy raiser, Andy Lautzenheiser.

Andy, inspired by his teacher, knew one day he would also volunteer to raise future service dogs.

While in college, Andy was once again introduced to puppy raising from a fellow student. Because of the impact his elementary school teacher left on him, he felt the calling to finally become a puppy raiser himself.

Andy is now a graduate student at the University of Texas at Dallas and a member of the college's Canine Companions puppy raising club. Three puppies later, Andy says it has been a life-changing experience.

"The pride you get from seeing your puppy grow up and mature is priceless," he says. "It definitely brings a purpose to your life."

Over the years, Stacy has also remained involved with the Canine Companions mission and has raised twelve puppies. She stays connected to Andy through their volunteerism and the strength of the Canine Companions community.

Canine Companions has 28 college puppy raising programs at colleges and universities across the country. Learn more about our collegiate puppy raising program at canine.org/collegiate.

"The pride you get from seeing your puppy grow up and mature is priceless."



Flying Into Seattle

Sometimes, things just come together. When one of the Northwest Region's largest funders, the Aldarra Foundation in Seattle, heard about our volunteer aviation partners program, they connected us with one of their other grantees, the Museum of Flight in Seattle. Thanks to this collaboration, one of our volunteer pilots transported nine Canine Companions puppies to Boeing Field, where they ceremoniously received their wing pins in front of the museum before heading off with their volunteer puppy raisers to become future service dogs.

Thanks to the Aldarra Foundation and the Museum of Flight for their support of our mission!

Learn more about our aviation partners at canine.org/aviationpartners.



Canines on Campus

Dr. John Hitt's dedication to our mission runs deep. This year he made the decision to support the organization financially with a significant gift. "Canine Companions has always been a first-class organization," says John. "It didn't take my wife, Martha, and me long to recognize the tremendous impact that Canine Companions has."

John had a 26-year presidency at the University of Central Florida (UCF) where his leadership fueled increases in enrollment, diversity, degree programs and much more. One of his most important accomplishments is the founding of STEP@UCF – a service dog training and education program for students. They became the first public university in Florida to allow Canine Companions puppies to live in university housing.

"It didn't take my wife, Martha, and me long to recognize the tremendous impact that Canine Companions has."



UCF student Alexis and Service Dog Eada sit outside the John C. Hitt Library on the campus of UCF.

The Canine Companions connection with UCF is strong. Alexis Holmes attends UCF and lives in the dorms working towards a degree in biomedical science. Alexis began the application process for her second Canine Companions service dog as she was accepted to the university, not knowing that her perfect match was not far away. A puppy named Eada was growing and learning with volunteer puppy raiser Sarah Crabtree as part of the STEP@UCF program. Alexis was matched with Service Dog Eada last year. "My parents were nervous about me going to UCF alone. They feel much more comfortable now that Eada is by my side."

Thank you to John and Martha Hitt and STEP@UCF for your unwavering support of Canine Companions. Learn about our puppy raising programs at canine.org/raise.

Two Lives Forever Changed

Brett Turek from Twentynine Palms, California, and Megan Ingersoll, from Portland, Oregon, served in the U.S. Marine Corps and National Guard, respectively, and were left with the invisible wounds of war that challenge their comfort in public places and even in their own homes.

The trauma Megan experienced during her time in the National Guard left her with post-traumatic stress disorder (PTSD). "I just couldn't go on by myself anymore." In 2017, Megan applied for a dog through a Department of Veteran Affairs (VA) study examining the efficacy of task-trained service dogs for PTSD, and she was matched with Canine Companions Service Dog Pumpkin. After the study concluded, Megan joined Canine Companions' program to receive free, ongoing support and follow-up services.

Brett spent 26 years in the Marine Corps which included several combat missions around the world. During his first deployment to Iraq, his unit, 3rd Battalion, 5th Marines, was one of the lead battalions tasked with clearing the city of Fallujah. His service left him with PTSD as well as a traumatic brain injury causing short-term memory loss. Earlier this year, Brett was partnered with Service Dog Zip through Canine Companions' Veterans Initiative™, a program established in 2007 that expanded to place service dogs to assist veterans with PTSD in 2014.

Both Zip and Pumpkin are trained in commands specifically tailored to reduce and mitigate symptoms of PTSD, including interrupting nightmares, flashbacks and anxiety, as well as turning on lights in a dark



room. Zip's help allows Brett to be more comfortable in crowds. **"Zip gives me the ability to be out in public and enjoy being in places again,"** he shares.

Pumpkin intuitively lays on Megan's bathroom floor whenever she showers so Megan feels safe in a place that is extremely triggering for her. Megan shares that Pumpkin's impact on her life and her independence has been incredible. "I wasn't able to leave my house three to four days out of the week. Then Pumpkin comes along, and I think maybe the world isn't so scary."

While military service ties Brett and Megan together, they have had unique experiences living with PTSD. Now, their partnerships with Canine Companions service dogs allow the two veterans to share some peace of mind and a different kind of community.

"I wasn't able to leave my house three to four days out of the week. Then Pumpkin comes along, and I think maybe the world isn't so scary."



Improving Access for Veterans With PTSD

The Puppies Assisting Wounded Servicemembers (PAWS) for Veterans Therapy Act was recently signed by President Biden. This new legislation will positively impact veterans with PTSD and their service dogs.

Canine Companions partnered with the VA in a four-year study on the benefits of trained service dogs for PTSD. Canine Companions provided 49% of all dogs placed through the study. The results were staggering. Veterans paired with tasked-trained service dogs showed less suicidal ideation and more improvement in mental health than those paired with emotional support dogs.

The results of the study laid the groundwork for future legislation, like the PAWS for Veterans Therapy Act, to further assist veterans using service dogs.

The act will allow veterans with PTSD to be eligible for VA service dog veterinary insurance benefits, also covering equipment and travel expenses associated with utilizing a service dog.

"The PAWS for Veterans Therapy Act is a positive change to support veterans and their service dogs for PTSD in an equitable way similar to service dogs for physical disabilities," says Jeanine Konopelski, Canine Companions vice president marketing and advocacy. "We were happy to collaborate with the VA on their study as well as this important legislation as we advocate for our veteran teams." Learn more at canine.org/veterans.



San Jose Sharks Puppy Finn Graduates

Canine Companions Service Dog Finn was matched with Joan Ehrnstein earlier this summer. Joan, who lives in Idaho and is a big hockey fan, was thrilled to be matched with Finn. He helps her by turning on and off lights, opening and closing doors and drawers, and most importantly, by picking up dropped items. Finn is Joan's fourth Canine Companions service dog. She shares, "My life has been totally changed by a cold nose and a wagging tail who gives me freedom and independence."

Congratulations to Joan and Service Dog Finn, and thank you all for following him on his journey to become a service dog! Many thanks to the San Jose Sharks for their support of our mission! We are excited to share some of the great work Finn is doing with Joan in the future. Good boy, Finn!

Read about the journeys of our other sponsored puppies at canine.org/puppyspotlight.

DogFest 2021 Puts the "Fun" in "Fundraising"

Canine Companions DogFest is a family-favorite event for people and their four-legged friends. We continued to host virtual and hybrid events earlier this year, and DogFest still had more than 1,700 registrants and many more attendees. Check out our scorecard for the latest stats!

12

DogFest events

\$1.2M

Raised to date

1,700

Registrants

Sit. Stay. Sparkle. Orange County

We appreciate our sponsors of Sit. Stay. Sparkle. Orange County 2021. They helped make this event a success, and we raised more than \$200,000 thanks to a generous matching gift of \$50,000 from the O'Connell Family Foundation.

One of our sponsors, Pacific Life, has supported our mission for the past 25 years.

"The service provided by Canine Companions is remarkable and invaluable to all involved. Pacific Life is proud to be associated with such a tremendous organization that provides a critical service at no cost to their clients. The values of Pacific Life and Canine Companions align well, and I'm proud to provide my support to the organization," says Joe Celentano, executive vice president, Retirement Solutions Division, Pacific Life.

THANK YOU TO THE FOLLOWING SPONSORS



A Legacy of Leadership - Remembering Dr. Pauline Parry



"If I were to describe Pauline," says Leslie Hennessey, national board treasurer, "I would say that she was incredibly kind, intuitive, a bit mischievous – and devoted to the Canine Companions mission. She was universally respected and loved."

It is with great sadness that we announce the death of Canine Companions vice chair of the board of directors, Dr. Pauline Parry. We have immeasurable gratitude for Pauline and the expertise, professionalism, commitment and friendship she brought to her role.

Pauline joined the Southwest Region board in 2003 and was selected for the national board of directors in 2007, holding the positions of vice chair and corporate officer during her 16 years on the board.

Pauline was pivotal in leading a revamp of board governance in 2020. She was also a member of our marketing committee and previous chair of the development committee. She was a hard worker, collaborative leader with fierce intellect and always with a warm smile.

In honor of Pauline's dedication and hard work in support of the mission for the past 18 years, we'll be naming a puppy in her honor and dedicating a memorial totem at our headquarters.

> Can we count on you every month?



Your monthly donation will provide dedicated support to our mission and help give greater independence to people with disabilities. Your gift will make a difference all year long.

Visit canine.org/gift

Become a monthly donor at \$25 or more and receive a Canine Companions tote bag.

Turning a House into a *Home*

In 1989, an apartment fire burned 80% of Dan Gropper's body, eventually causing an infection that resulted in the loss of all four of his limbs. He was 21 at the time, and spent six months in the hospital and a year in physical therapy.

For 32 years, Dan has lived on his own and learned to remain active using a wheelchair.

But Dan, who lives on Long Island, New York, realized he needed help. As he got older, he felt the strain of trying to pick things up off the ground and open doors. He turned to Canine Companions.

Recently, he received a new family member he can always rely on. Dan and Canine Companions Service Dog Zinger graduated from our two-week Team Training. For Zinger and Dan, it was love at first sight.

"It's nice having a dog in the house. When you have a dog, you have a home."

"Zinger's a great choice for me. He's a mush and very loving and social," Dan says. He jokingly continues, "He can't drive a car yet, but he's working on it!"

Despite his injuries, Dan has remained an active golfer and boxer and gets out of the house often to go to the gym. Now, Zinger can help Dan live a more independent life, by helping push doors open and pull doors closed, as well as picking up his phone or a water bottle off the ground. He can also retrieve prosthetics, help Dan get dressed and turn lights on and off.

"It's nice having a dog in the house. When you have a dog, you have a home," Dan says.

From Suds to Supporter

Canine Companions supporters find a passion for our mission in many ways and for many reasons. For Mary Clare Matthews, it began more than 20 years ago when she was living in Del Mar, California and was inspired through a special family pet.

Their yellow Labrador, Cooper, was so trainable that they taught him fun tricks, like how to get drinks from the fridge. When she learned there were service dogs trained to do similar tasks for people with disabilities to help make their daily lives easier, she was immediately drawn in.

She fell in love with the Canine Companions mission and the way the organization transforms the lives of people with disabilities. So, she began volunteering to bathe dogs in professional training at the Southwest Region campus.

Many years later and after a move to Austin, Texas, Mary Clare and her husband Jamie continue to be avid supporters and champions of our mission.

"Canine Companions has done a wonderful job training and working with both dogs and humans,

offering life-changing assistance to those in need," she says. "The impact of their mission is lifelong."

Mary Clare no longer bathes dogs on campus but instead provides the organization significant financial support through her husband's family's Tecumseh Foundation.

"Canine Companions has done a wonderful job training and working with both dogs and humans...the impact of their mission is lifelong."

The Matthews family has been a major supporter of Canine Companions since 2002. They have been an integral part of the expansion of the Veterans Initiative to specifically serve veterans with post-traumatic stress disorder in the South Central Region.

Each Canine Companions service dog is provided completely free of charge to our clients thanks to our generous supporters. Our donors are the heartbeat of our mission and make each match between a service dog and a person with a disability possible. Visit canine.org/donate to show your support.



Treat Yourself!

This holiday season, celebrate YOU while supporting Canine Companions! Purchase St. Francis wine in-store or online and \$1 of every bottle will be donated to Canine Companions up to \$100,000. This offer is good through the end of the year, so start shopping. Visit wine365.com/StFrancisWines or your local retailer!



POWERED BY



Eukanuba™ has been a valued strategic partner of Canine Companions for more than 30 years. Through the partnership, Eukanuba™ has supported our mission through donations as well as providing quality, premium nutrition for our service dogs.

In the late 1960s, Eukanuba™ founder Paul Iams was inspired by the abilities of working and sporting dogs. Looking to create a dog food that could help fuel dogs with jobs, he created a new high-protein option that put performance and nutritional science first. Paul chose the name “Eukanuba,” a jazz term meaning “supreme” to symbolize his vision for next-level canine nutrition.

This dedication to the science behind nutrition brought Canine Companions and Eukanuba™ together in 1991. Since then, we’ve developed an understanding of the relationship between nutrition, canine cognition and longevity in Canine Companions puppies and service dogs. Our partnership increases awareness of volunteer puppy raising and our mission to provide service dogs to people with disabilities, free of charge.

As our longtime partner, Eukanuba™ has sponsored several puppies over the years. Recently, they sponsored the naming of a Canine Companions puppy from the K litter in celebration of September’s National Service Dog Month. With a month-long social media campaign, the public had the opportunity to name and “meet” adorable future service dog Kit, pictured above. **The dedication and generous support of corporate partners like Eukanuba™ allows Canine Companions to continue evolving our cutting-edge research and training programs.** Together, we’re working towards an industry-wide goal of providing service dogs to all eligible applicants and reducing wait times for individuals who would benefit from a service dog.

Read more about our corporate partners at canine.org/partners.

Here’s a Gift That Lasts All Year!

The Canine Companions 2022 Puppy Calendar is the perfect present! Plus, you’ll get \$60 in Eukanuba™ coupons.

Get yours today with a \$25 donation at canine.org/calendar.



Do You Speak Dog?

In a groundbreaking study in canine cognition, our partners at the Arizona Canine Cognition Center at the University of Arizona have determined that Canine Companions puppies understand aspects of human communication from just 8-weeks-old! The results also suggest that a large part of human-canine communication is genetic – at least in Canine Companions’ dogs.

Canine Companions puppies underwent three fun tests – a “pointing test,” a “human interest” test and an “unsolvable” test. In the pointing test, a researcher placed two upside-down cups in front of the puppy, one with a treat underneath and one without. The researchers pointed to the cup with the treat; puppies followed the pointing gesture 70% of the time – similar to the rate of adult dogs.

“The puppies were able to follow the point from the very first exposure and didn’t do better over consecutive trials,” says Dr. Emily Bray, postdoctoral researcher at Canine Companions and the Arizona Canine Cognition Center. “This suggests that the ability to follow gestures is something that they come to the test already prepared to do! We also see that there is a strong genetic component.”

Another test also supported the inherited communication abilities of Canine Companions puppies. Our puppies made eye contact with researchers speaking in a high-pitched voice for an average of six seconds – a key social cue that shows early connection in human-canine communication.

The final test timed how long a puppy would independently try to open a locked container with food visible inside, compared to how much they would look towards a human for help. In adult dogs, this “unsolvable task” usually results in dogs readily looking for human intervention. In puppies, the tendency to look to a human for assistance was not very strong, suggesting that for puppies, the ability to understand social gestures appears sooner than the ability to initiate them.

We’re grateful to our research partners and Canine Companions’ research team for contributing to important research to help us understand our puppies and service dogs. Learn more at canine.org/science.



“The ability to follow gestures is something that Canine Companions puppies come to the test already prepared to do!”

RAISING CANE'S TO SUPPORT CANINE COMPANIONS



In a unique partnership, Peanuts® and Raising Cane's Chicken Fingers are working together on a special product line to benefit Canine Companions. Running through the end of the year, these special products include a series of Peanuts-themed limited t-shirt designs and plush pups. Purchase yours today at raisingcanesgear.com.

CHEERS ALL YEAR FOR YEARS TO COME

For more than 20 years, the Weller family owned a successful online ornament business that brought cheer to many all year round with their special ornaments and decorative tabletop gifts. Russ and Dianne know firsthand the gift of a Canine Companions service dog. Their son Don was partnered with Canine Companions Service Dogs Expo, Luna and Lorenzo for 31 years. As a special way to give back and honor Canine Companions and Don, the Weller family have donated adorable ornaments of Canine Companions service dogs.



With 100% of proceeds going directly to Canine Companions, these ornaments not only look great, but are a fantastic way to honor the work of dogs like Expo, Luna and Lorenzo.

Purchase your ornaments today at canine.org/shop.



Luke and Dragon Pay It Forward

Becoming an Eagle Scout is the highest achievement attainable in the Boy Scouts of America. Canine Companions graduate Luke says that it's unlikely he would have come so far without Service Dog Dragon's help and support.

"Dragon has reconnected Luke with his life," says Luke's mother, Laura Ann Tordey. "He's my life-changer,"

adds Luke. Luke was matched with Dragon in 2016 and immediately made it his goal to "pay it forward" so others with disabilities could receive their own expertly trained service dog from Canine Companions.

Luke, a resident of Long Island in New York, has been a top fundraiser for DogFest Long Island for several years. When it came time to begin work on his Eagle Scout rank, Luke knew just the project that would demonstrate his service and leadership.

While attending Team Training to receive Dragon, Luke recognized the need for modified dog bowls for all the dorm rooms and living spaces at the Northeast Region Miller Family Campus. With Dragon's help, Luke built more than a dozen elevated dog bowls that Team Training students and the dogs in professional training will enjoy for many years to come.

Learn more about Canine Companions' work with service clubs at canine.org/serviceclubs.

Mission ACCOMPLISHED

For more than 20 years, a gazebo-style bandstand has been located in the heart of the Southeast Region Training Center serving as a gathering place for our clients, staff, supporters and volunteers. It has become a place to celebrate, hold meetings, take photos and enjoy all of the activity on campus.

Now, thanks to hard work from Eagle Scout Logan Searcey, the gazebo has a fresh new look. For his Eagle Scout project, Logan raised funds to paint the columns and benches, clean the roof, add new wooden footers, hang flowers and patio lights, and replace the ceiling fan. He and his troop members came to campus one weekend to complete the job and even installed a stone bench in front of the Southeast Region training center tribute wall.



AmazonSmile Supports Our Mission

Your holiday shopping can help Canine Companions! Select Canine Companions as your charity of choice on AmazonSmile.com and start shopping!

AmazonSmile and the AmazonSmile logo are trademarks of Amazon.com, Inc or its affiliates.

NADA Foundation Gifts Top One Million Dollars

“Finding ways to assist others is a hallmark of the automotive industry,” says Annette Sykora, chairwoman of the National Automobile Dealers Association Foundation (NADA). “That’s why the mission of Canine Companions, partnering highly trained service dogs with people who need assistance, has always been dear to NADA.”



“A dog may be a man’s best friend, but for wounded veterans and children with disabilities, a highly trained service dog can mean having support, security and independence,” says Annette.

The NADA is an American trade organization representing nearly 16,500 franchised new car and truck dealerships, both foreign and domestic. The foundation’s Frank E. McCarthy Memorial Fund supports Canine Companions in providing service dogs to veterans and children with disabilities. This year, NADA Foundation surpassed \$1 million in cumulative gifts to Canine Companions.

Hansel Subaru Loves to Give!



Our friends at Hansel Subaru in Santa Rosa, California have supported Canine Companions through their Share the Love campaign, event sponsorships, car loans and commercials. Over the years, Hansel has directed more than \$180,000 in funding to Canine Companions! The incredible support from Hansel Subaru doesn’t stop – earlier this year, they loaned us a Subaru Outback, wrapped with our new branding, to use at our headquarters and Northwest Region Training Center. The car’s artwork includes Canine Companions puppy Hansel, who the company is following in honor of the dealership’s years of support. It’s definitely an eye-catching vehicle to other drivers, raising awareness of our mission in the community.

Thanks to Hansel Subaru and the Hansel Auto Group for their long-time support of Canine Companions!

Hansel Auto Group Executive General Manager David J. Long with puppy Hansel.



Bringing the World Back to Kim

Eight years ago, Traverse City, Michigan resident Kim Couturier’s life took an unexpected turn when he was diagnosed with multiple sclerosis. Just two years later, the former teacher lost his hearing. Kim started noticing he was more and more isolated and that he needed to make a change.

“I was down a lot, pulled away from social gatherings and my friends, just couldn’t feel like I fit in anymore,” Kim says.

In July 2021, Kim and his family headed to Canine Companions, where Kim was matched with a sweet service dog named Claudee. Claudee is trained to alert Kim to sounds he can no longer hear, including the doorbell, a ringing phone and fire alarms. “The moment I was matched with Claudee, I was filled with joy,” Kim says.

Now semi-retired, Kim spends his free time flying radio controlled jets, and Claudee is always by his side. Kim and his family have had some tough times recently, but

Claudee has been a big help, thanks to her fun, goofy personality. Kim is no longer isolated, thanks to both Claudee’s excellent work ethic and her silly antics at home.

“It’s just so hard to fathom having Claudee sometimes,” Kim remarks. “I can’t thank Canine Companions and their supporters enough for being so friendly, generous and genuine. My outlook on life is so much better with Claudee here.”

Read more client stories at [canine.org/stories](https://www.canine.org/stories).

“My outlook on life is so much better with Claudee here.”

How Your Donation Helps

Canine Companions relies on the generosity of donors and volunteers to breed, train and place expertly trained service dogs to empower people with disabilities to lead life to the fullest. Every donation makes our mission possible, from providing equipment to our clients to funding the construction of training centers.

“We take care of each Canine Companions dog and puppy as if they were our own. They receive the best treatment to keep them healthy and happy. Donations are critical – no matter the size – to keep operations running and to give every dog the wellness plan they need.” –Dr. Philip Lin, Canine Companions Veterinary Medical Director

> Give now at canine.org/donate



\$25 Donation

Provides a new vest and leash for a graduating service dog.



\$50 Donation

Provides one month of food and toys for a dog in professional training.



\$100 Donation

Provides expert medical and wellness care for a Canine Companions dog in professional training.



\$500 Donation

Provides dedicated follow-up services to support the human-canine team.

STAFF UPDATE



Introducing Marcell Mallette

We'd like to introduce Southwest Region Executive Director Marcell Mallette. Marcell has more than 25 years of progressive experience in fundraising and advancement, most recently serving as the chief advancement officer and executive director of the SUNY Adirondack Community College Foundation in Queensbury, New York for the last three years.

Marcell graduated from the University of Pittsburgh with a bachelor's degree in public relations. She also has a master's degree in integrated marketing communications from St. Bonaventure University.

We are extremely excited to welcome Marcell to the Southwest Region!



Congratulations Shelley Locke

Canine Companions is pleased to announce that Shelley Locke has been promoted to Southeast Region program director. Shelley began her career as an instructor assistant in the Northwest Region. She transferred to the Southeast Region and became an instructor in 2019. In 2020, Shelley was promoted to training manager and has shown that she is a strong leader who can collaborate and innovate, and above all, provide compassionate service.

Please join us in congratulating Shelley on her new role overseeing the Southeast Region's puppy and client services departments.

Gear Up for the Holidays!

Head to canine.org/shop to check out all of our merchandise!

Make sure to get a LABRADORABLE limited edition ornament to celebrate service dogs and the great work they do. Makes a great gift too!

Don't miss our holiday and winter themed note card packs! These cute faces won't last long!

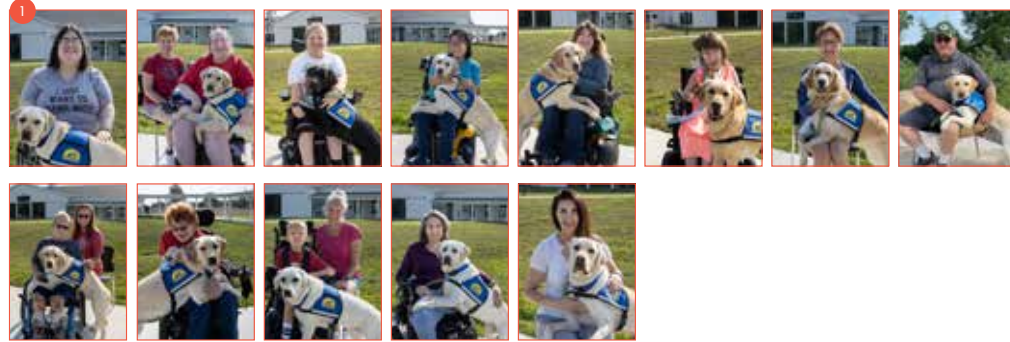
2021 Team Training Yearbook

The people you see here were provided expertly trained service and facility dogs – and a lifetime of ongoing follow-up services – entirely free of charge.

NORTH CENTRAL

1. AUGUST

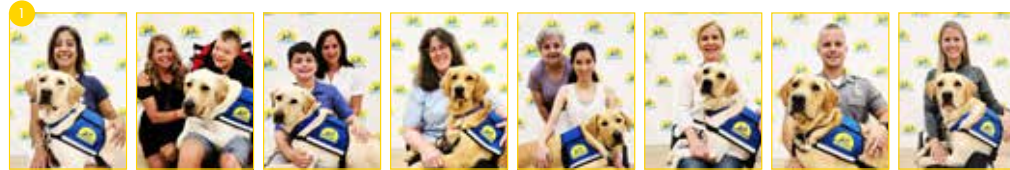
Amanda with Libby; Brittany & Lisa with Irwin; Chelsea with Prize; Courtney with Shasta; Elizabeth with Zinc; Emily with Dapper; Jane with Nasa; Jeff with Aloe; Lane & Danielle with Olaf; Lisa with Boltz; Max & Emily with Kylie; Shannon with Cleo; Tricia with Hank.



NORTHEAST

1. JULY

Ameera with Zumi; Anthony & Cindy with Bjorn; Arlene with Nali; Ben & Nicole with Jennings; Heidi-Marlene & Heidi with Pepsi; Karin with Karma; Lee with Roy; Mary with Kristofer; Troy with Pascal.



2. AUGUST

Chele with Ferman; Dan with Zinger; Janette with Cheshire; Jason with Illini; Joshua with Maverick; Kara with Darwin; Madison with Viva; Shane with Scout.



NORTHWEST

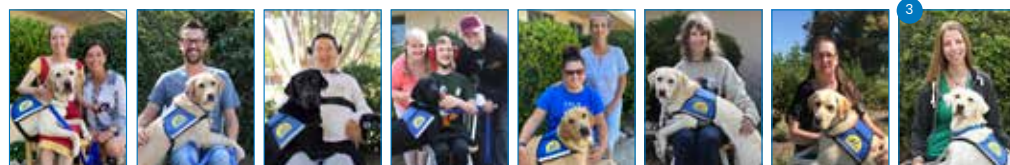
1. JUNE

Cynthia with Adela; Jenifer with Paisley; Jill with Bubbles; Kevin with Blair; Marilyn with Archie; Pattie with Wicker; Raven with Dayna.



2. JULY

Ann & Deborah with Aulani; Audrey & Deb with Merlot; Chad with Zuki; Henry with Cyrus; Jackson, Mandi & Donald with Florence; Jane & Bonny with Thompson; Jeannette with Jodie; Starla with Elphie.



3. AUGUST

Brianna with Mabel; Jasmine with Remix; Joan with Finn; Kareena with Foxy; Kristi with Harris; Lindsey with Roger; Marissa with Connor; Melvin with Vernon.



4. SEPTEMBER

Khara with Claudette; Kris with Yarley.



SOUTH CENTRAL

1. JUNE

Bentley, Ryan & Kassi with Gilbert; Olivia, Ryan & Meredith with Shimmer.



2. AUGUST

Alex with Hanson; Chris with Fanti; Daphne with Mills; David with Turbo; Jason with Willshire; Kenneth, Eduardo & Nora with Fulton; Sandra with Happy; Zoe, Jay & Brooke (not pictured) with Zelda.



3. SEPTEMBER

Caleb & Amanda with Olive; Donald with Vidia; Lacey with Forest; Luke, Anne & Leny with Barnaby; Renee with Pilot.

SOUTHEAST

1. MARCH

Lauren with Zakeara



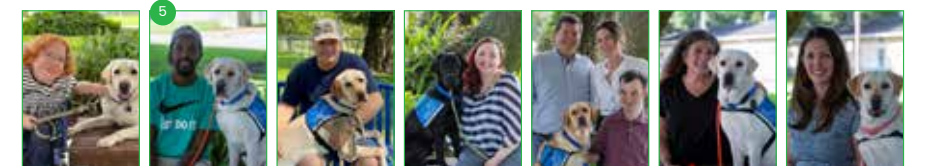
2. MAY

Alison with Vega; James with Achilles; Marsha with Yohan; Tamara with Yahini.



3. JUNE

Kathie with Vivvy; Kim with Claudee; Linda with Ricochet; Lise with Shine.



4. AUGUST

Alexi with Pink; Brooks, Chuck & Jackie with Idris; Debra with Storm; Ellie & Emily with Chappie; Haley & Jill with Wilco; James & Cathy with Ruger; Max with Kain; Nicole with Gage.

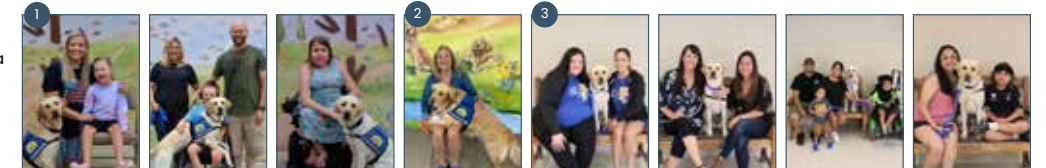
5. SEPTEMBER

Alex with Prince; Brian with Nate; Brianna with Palmer; Henry, Lauri & Russ with Tango; Candy with Miso; Michelle with Pam.

SOUTHWEST

1. JUNE

Lauren & Jessica with Malia; Josiah, Andrea & Jeff with Tiger; Kimberly with Hallie.



2. JULY

Charlotte with Frannie



3. AUGUST

Chloe & Amber with Lois; Diana & Erica with Harvest; Francisco, Laura & Roberto with Titan; Giovanni & Adela with Vermont; Jaelyn with Wynn; Janette with Olema; Kinda with Fido; Raymond with Orent.

4. SEPTEMBER

Frances with Pippa; Robert with Fabio.



Return the enclosed envelope with your gift today and help make more teams possible.

Board Members

OFFICERS

John McKinney

CHAIR

Healdsburg, CA

Leslie Hennessy, PhD

TREASURER

Colorado Springs, CO

Steve Boyd

SECRETARY

Dallas, TX

MEMBERS

Anne Gittinger

BOARD CHAIR EMERITUS

Seattle, WA

Mel Gottlieb

Rose Bay, Australia

Barrie Graham

Novato, CA

Russ Gurevitch, DVM

Penn Grove, CA

John Hopen

Sebastopol, CA

Carolyn Hrach

Sewickley, PA

Judge Ed Kinkeade

Irving, TX

Chris Kittredge

Santa Rosa, CA

Jill Leverton, MD

Napa, CA

Michelle Ludwig, MD

Houston, TX

John Miller

IMMEDIATE PAST CHAIR

Naples, FL

Juergen Rottler

Gaienhofen, Germany

Robin Sanchez

Winter Garden, FL

Jean Schulz

BOARD CHAIR EMERITUS

Santa Rosa, CA

Bill White

Winter Park, FL

Emily Williams

Santa Rosa, CA

Paige Mazzoni

CHIEF EXECUTIVE OFFICER

Santa Rosa, CA



PO Box 446
Santa Rosa, CA 95402-0446
Address Service Requested

*If you receive duplicate issues,
please contact us and pass extras
along to friends.*

Nonprofit Org.
U.S. Postage

PAID

By Canine
Companions
for Independence

Honorary & Associate Board

John Beere

LPCC PRESIDENT

Manassas, VA

Judy Allen

Palm Desert, CA

Jack Hanna

Powell, OH

Dean & Gerda Koontz

Newport Beach, CA

Terry Levin

San Francisco, CA

Madeleine Paulson

Rancho Santa Fe, CA

Jon Provost

Santa Rosa, CA

Training Centers

Headquarters

& Northwest Region

Santa Rosa, CA

Southwest Region

Oceanside, CA

Southeast Region

Orlando, FL

Northeast Region

Medford, NY

North Central Region

New Albany, OH

South Central Region

Irving, TX

Email: info@canine.org Website: canine.org

Phone: 1-800-572-BARK (2275)

©2021 Canine Companions. All rights reserved.



National Corporate Partner

Eukanuba



**"I couldn't go on by
myself anymore."**

Read more on page 8.

-Megan Ingersoll and Service
Dog Pumpkin