



EVERGREEN PLACE

BY SUMMERHILL HOMES

NESTLED IN THE FAR EASTERN EDGE OF SANTA CLARA VALLEY, EVERGREEN PLACE WILL OFFER 87 NEW SINGLE-FAMILY DETACHED HOMES AND 16 LARGE TOWNHOMES:

THE COTTAGES & THE TOWNS

THE TOWNS

BY SUMMERHILL HOMES

The Towns: 16 townhomes. These homes will offer 3-4 bedrooms and 2½- 3½ baths with four plan types ranging from approximately 1,862 to 2,439 square feet of living space.

Evergreen Place is conveniently located in San Jose, CA on the southwest corner of Aborn Road and Ruby Avenue, providing beautiful views of Santa Clara Valley and the Peninsula. The vibrant city of San Jose is located within the booming local tech industry, and is claimed to fame as the Capital of Silicon Valley, yet it still offers traditional neighborhoods like Evergreen for a place called home. The area of Evergreen offers highly-ranked schools and an easy commute access to Silicon Valley and the Bay Area, as well as trendy dining and upscale shopping just minutes away. Recreational amenities are easily accessible with nearby Cunningham Park, Evergreen Creek Trail and Fowler Creek Park & Trail.

The perfect place to call home 



Artist Conception

3000 Aborn Road in San Jose, CA,
P: (408) 223-1206 • F: (408) 223-1269
EvergreenPlaceSales@shhomes.com
DRE# 01301389 

Visit us Online at:

SUMMERHILLHOMES.COM

COMMUNITIES OF DISTINCTION



BUILDING
90



Town 4 - 2A Town 3 - 1A Town 2 - 1XAR Town 1 - 2D

BUILDING
91



Town 10 - 2B Town 9 - 1F Town 8 - 1DR Town 7 - 1B Town 6 - 1CR Town 5 - 3A

BUILDING
92



Town 16 - 2C Town 15 - 1XA Town 14 - 1AR Town 13 - 1B Town 12 - 1ER Town 11 - 3B

SummerHill Homes reserves the right to alter floor plans, specifications, features, prices, and other information described in this brochure without notice or obligation. All renderings are artist's conception. All room dimensions and home sizes are approximate and may vary depending upon elevation. Window sizes and locations, room sizes, and layouts are subject to change per elevation or flex option. Ask the Community Sales Team for details. All information contained in this brochure is qualified in its entirety by the Seller's Information Statement, which is incorporated herein by this reference. DRE# 01301389 03/13

Site Plan

THE TOWNS

- Town 1**
1,862 Approx. Sq. Ft.
- Town 1X**
1,935 Approx. Sq. Ft.
- Town 2**
2,326 - 2,439 Approx. Sq. Ft.
- Town 3**
2,406 Approx. Sq. Ft.

← THE COTTAGES



SummerHill Homes reserves the right to alter floor plans, specifications, features, prices, and other information described in this brochure without notice or obligation. All renderings are artist's conception. All room dimensions and home sizes are approximate and may vary depending upon elevation. Window sizes and locations, room sizes, and layouts are subject to change per elevation or flex option. Ask the Community Sales Team for details. All information contained in this brochure is qualified in its entirety by the Seller's Information Statement, which is incorporated herein by this reference. DRE# 01301389 03/13



Town 4 - 2A

Town 3 - 1A

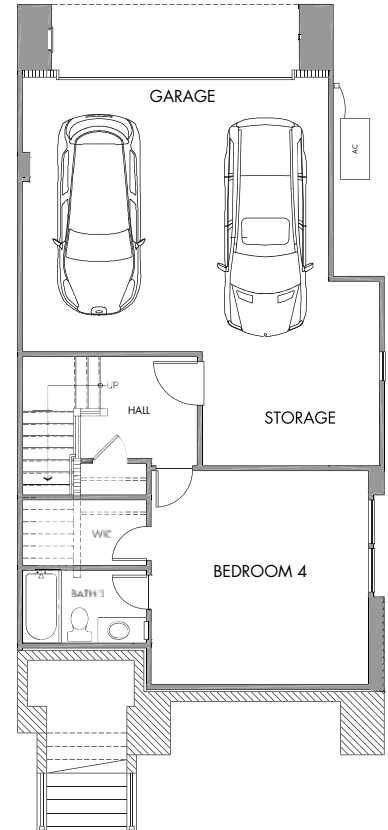
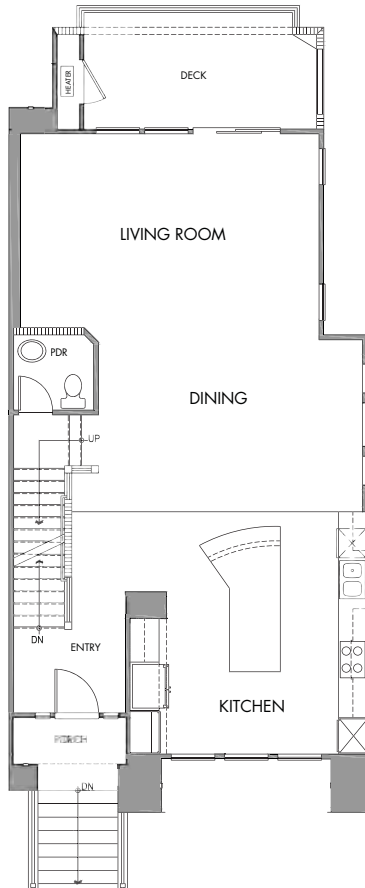
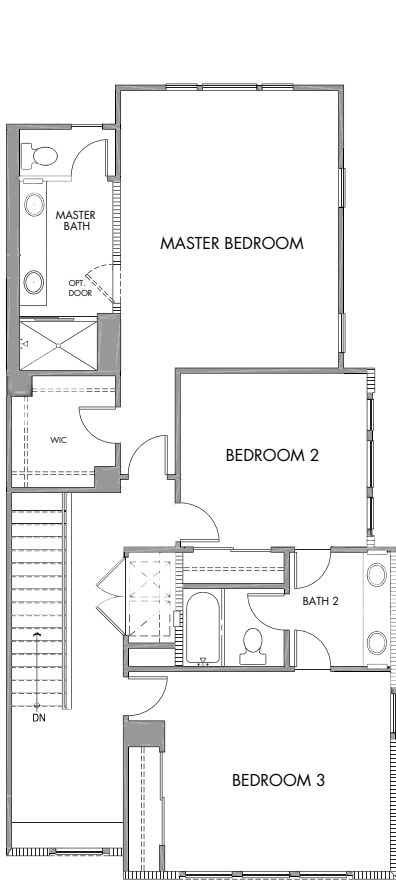
Town 2 - 1XAR

Town 1 - 2D

THIRD FLOOR

SECOND FLOOR

FIRST FLOOR



SummerHill Homes reserves the right to alter floor plans, specifications, features, prices, and other information described in this brochure without notice or obligation. All renderings are artist's conception. All room dimensions and home sizes are approximate and may vary depending upon elevation. Window sizes and locations, room sizes, and layouts are subject to change per elevation or flex option. Ask the Community Sales Team for details. All information contained in this brochure is qualified in its entirety by the Seller's Information Statement, which is incorporated herein by this reference. DRE# 01301389 01/13

TOWN 2 • RESIDENCE 1XAR

3 bedrooms - 2.5 baths - 1,935 approx sq. ft.



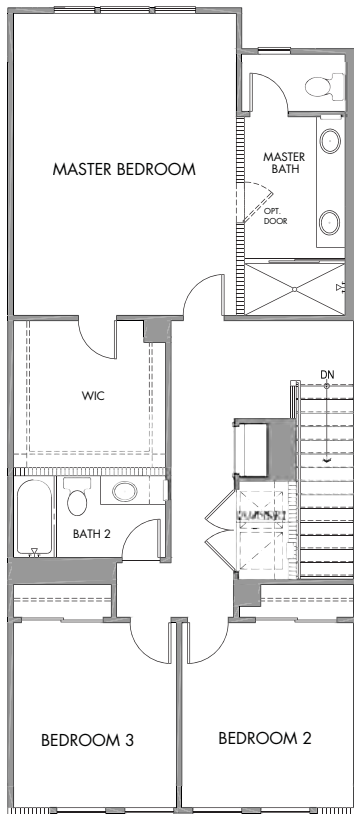
Town 4 - 2A

Town 3 - 1A

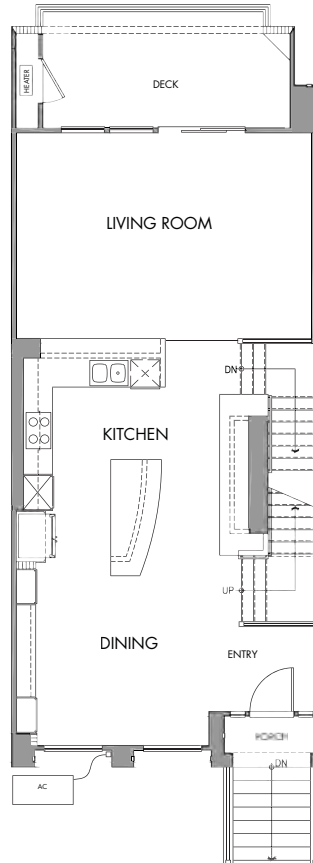
Town 2 - 1XAR

Town 1 - 2D

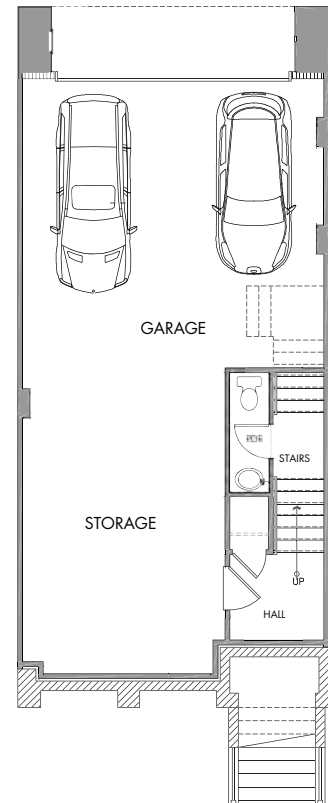
THIRD FLOOR



SECOND FLOOR



FIRST FLOOR



SummerHill Homes reserves the right to alter floor plans, specifications, features, prices, and other information described in this brochure without notice or obligation. All renderings are artist's conception. All room dimensions and home sizes are approximate and may vary depending upon elevation. Window sizes and locations, room sizes, and layouts are subject to change per elevation or flex option. Ask the Community Sales Team for details. All information contained in this brochure is qualified in its entirety by the Seller's Information Statement, which is incorporated herein by this reference. DRE# 01301389 01/13

TOWN 3 • RESIDENCE 1A

3 bedrooms - 2.5 baths - 1,862 approx sq. ft.



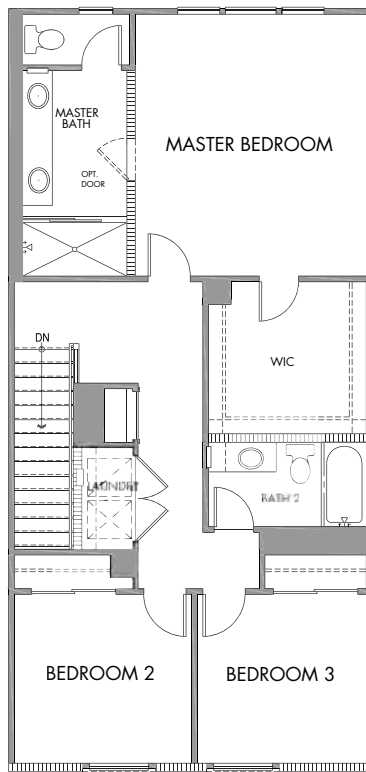
Town 4 - 2A

Town 3 - 1A

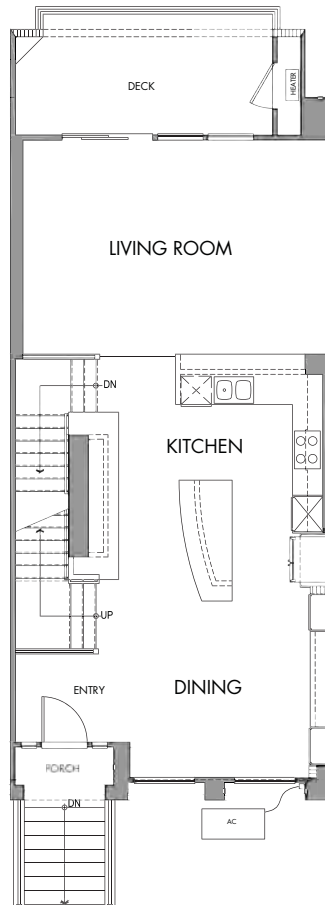
Town 2 - 1XAR

Town 1 - 2D

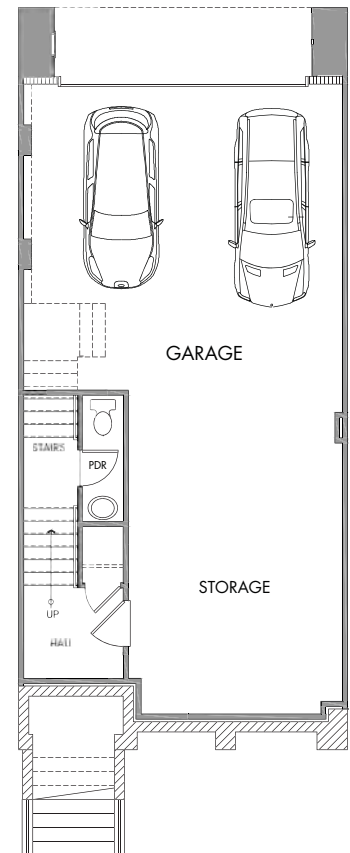
THIRD FLOOR



SECOND FLOOR



FIRST FLOOR



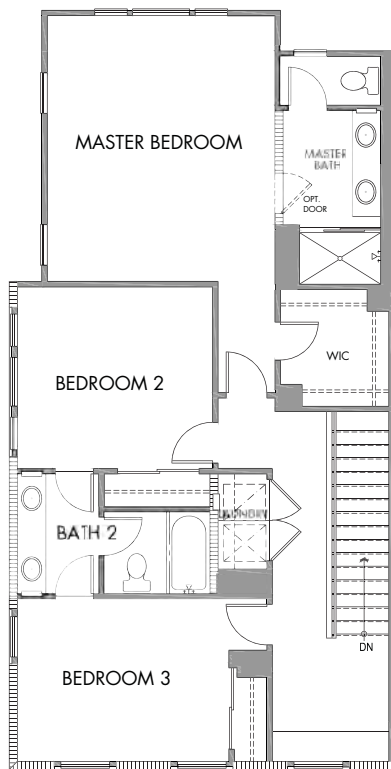
SummerHill Homes reserves the right to alter floor plans, specifications, features, prices, and other information described in this brochure without notice or obligation. All renderings are artist's conception. All room dimensions and home sizes are approximate and may vary depending upon elevation. Window sizes and locations, room sizes, and layouts are subject to change per elevation or flex option. Ask the Community Sales Team for details. All information contained in this brochure is qualified in its entirety by the Seller's Information Statement, which is incorporated herein by this reference. DRE# 01301389 01/13

TOWN 4 • RESIDENCE 2A

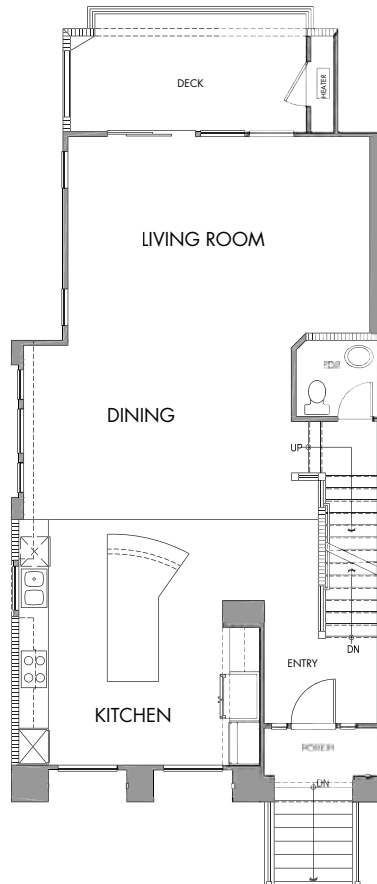
4 bedrooms - 3.5 baths - 2,326 approx sq. ft.



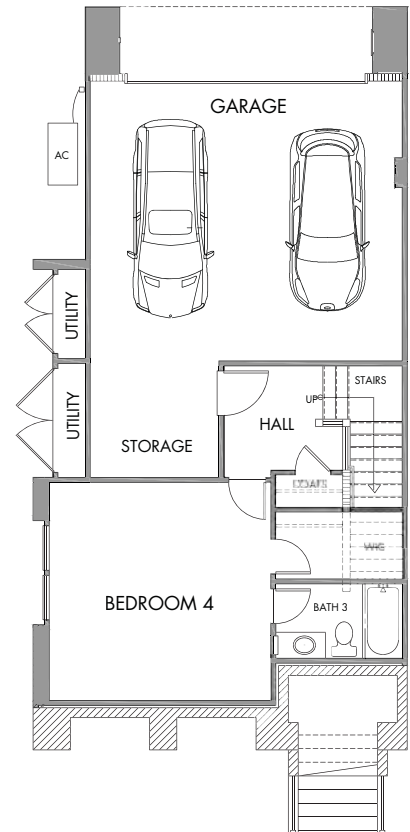
THIRD FLOOR



SECOND FLOOR



FIRST FLOOR

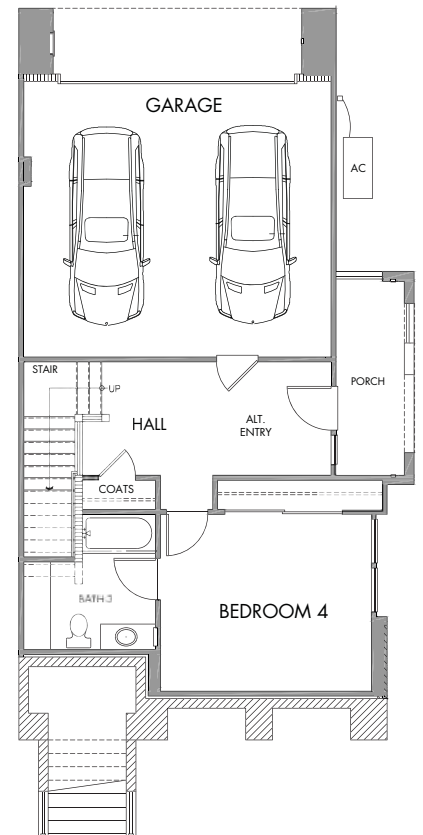
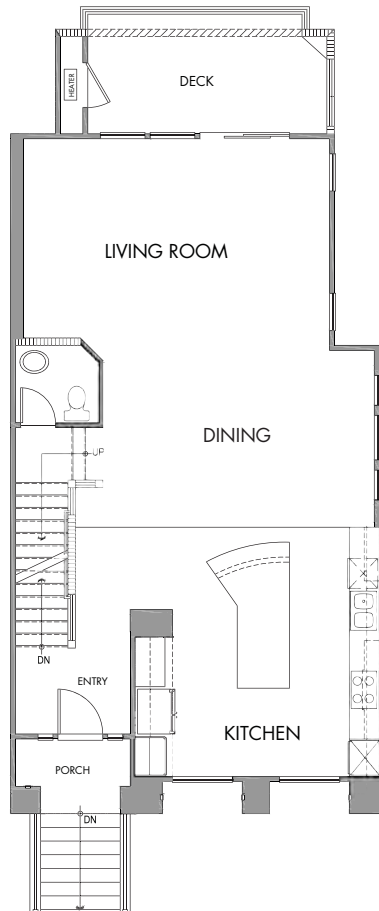
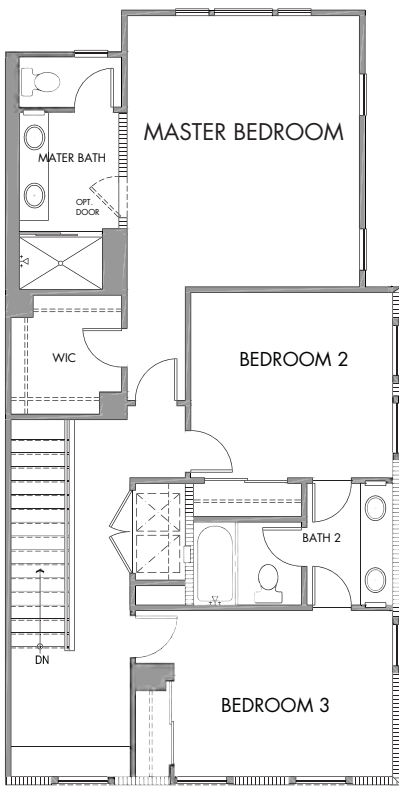




THIRD FLOOR

SECOND FLOOR

FIRST FLOOR



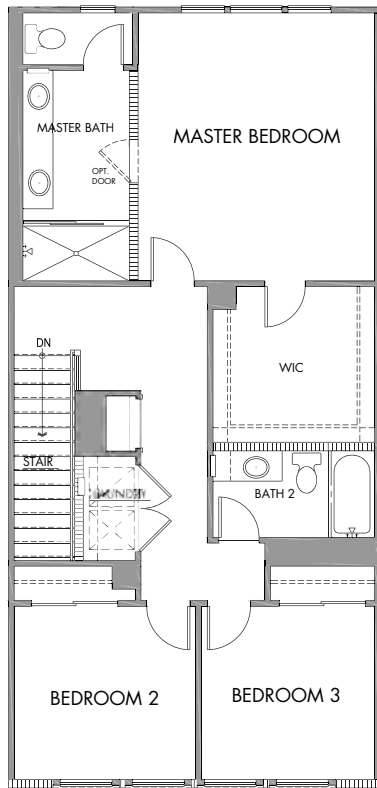
SummerHill Homes reserves the right to alter floor plans, specifications, features, prices, and other information described in this brochure without notice or obligation. All renderings are artist's conception. All room dimensions and home sizes are approximate and may vary depending upon elevation. Window sizes and locations, room sizes, and layouts are subject to change per elevation or flex option. Ask the Community Sales Team for details. All information contained in this brochure is qualified in its entirety by the Seller's Information Statement, which is incorporated herein by this reference. DRE# 01301389 01/13

TOWNS 6 - 7 - 8 - 9 • RESIDENCE 1

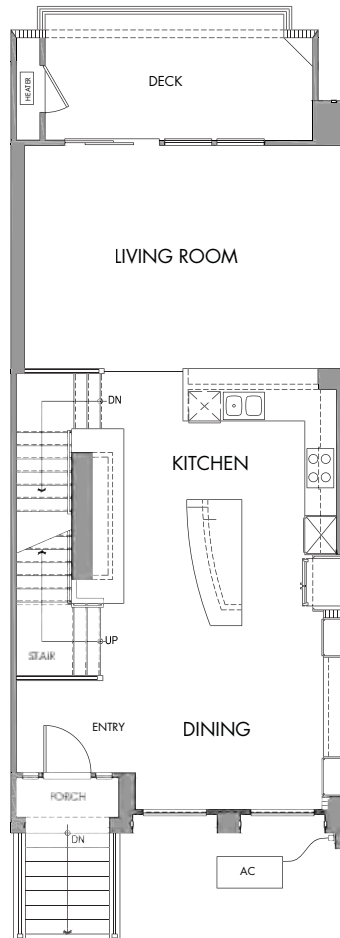
3 bedrooms - 2.5 baths - 1,862 approx sq. ft.



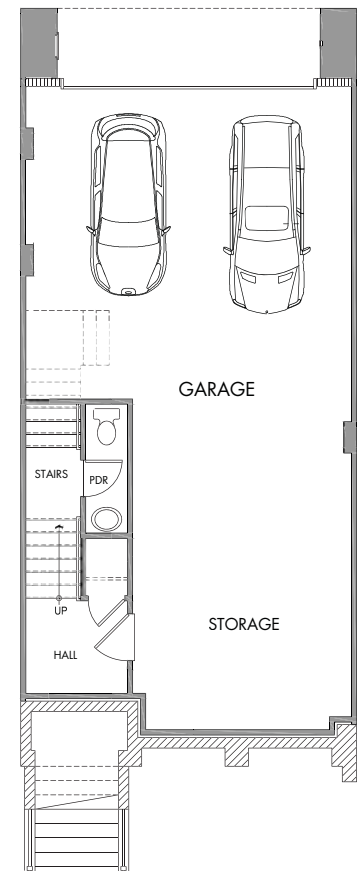
THIRD FLOOR



SECOND FLOOR



FIRST FLOOR

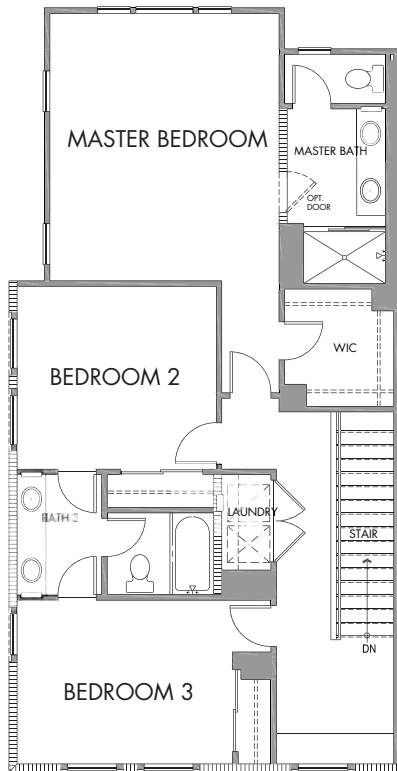


6 & 8 are Reversed

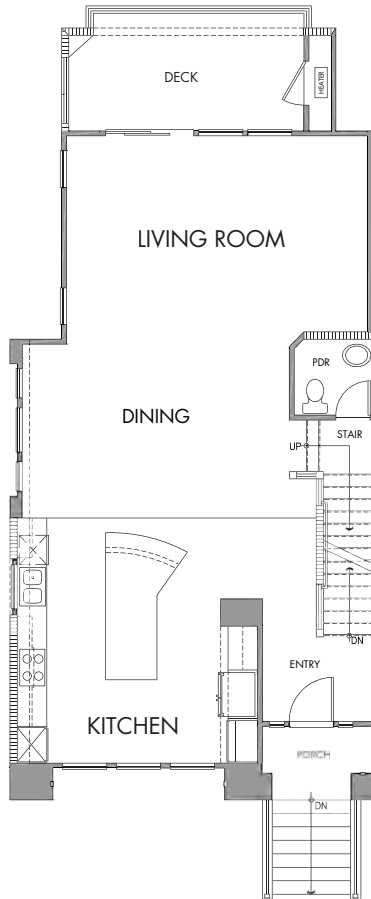
SummerHill Homes reserves the right to alter floor plans, specifications, features, prices, and other information described in this brochure without notice or obligation. All renderings are artist's conception. All room dimensions and home sizes are approximate and may vary depending upon elevation. Window sizes and locations, room sizes, and layouts are subject to change per elevation or flex option. Ask the Community Sales Team for details. All information contained in this brochure is qualified in its entirety by the Seller's Information Statement, which is incorporated herein by this reference. DRE# 01301389 01/13



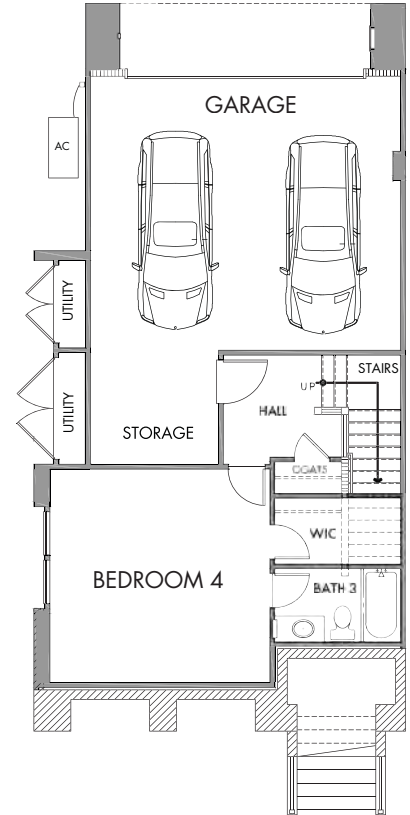
THIRD FLOOR



SECOND FLOOR



FIRST FLOOR



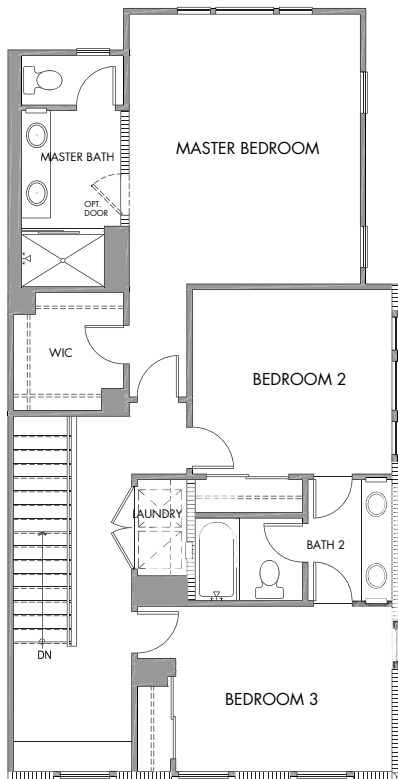
TOWN 11 • RESIDENCE 3B

4 bedrooms - 3.5 baths - 2,406 approx sq. ft.

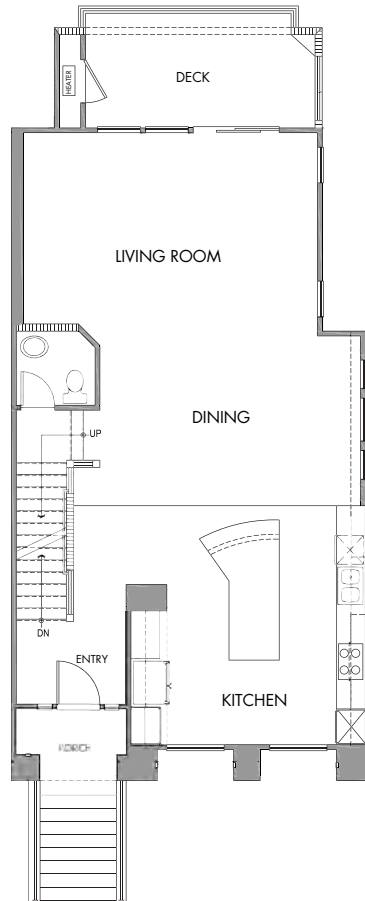


Town 16 - 2C Town 15 - 1XA Town 14 - 1AR Town 13 - 1B Town 12 - 1ER **Town 11- 3B**

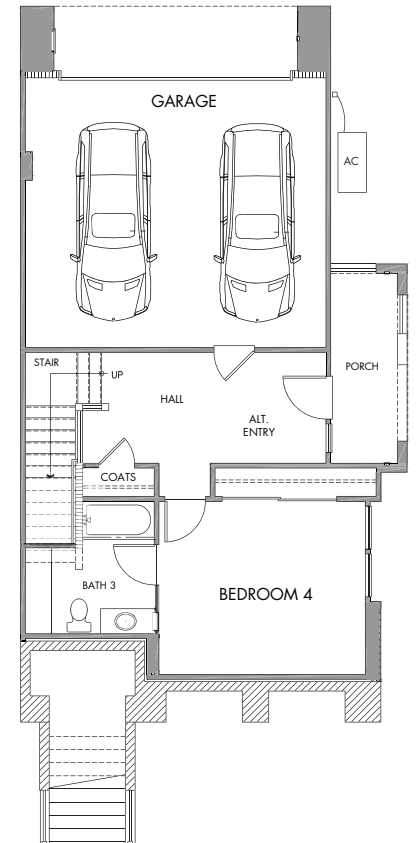
THIRD FLOOR



SECOND FLOOR



FIRST FLOOR

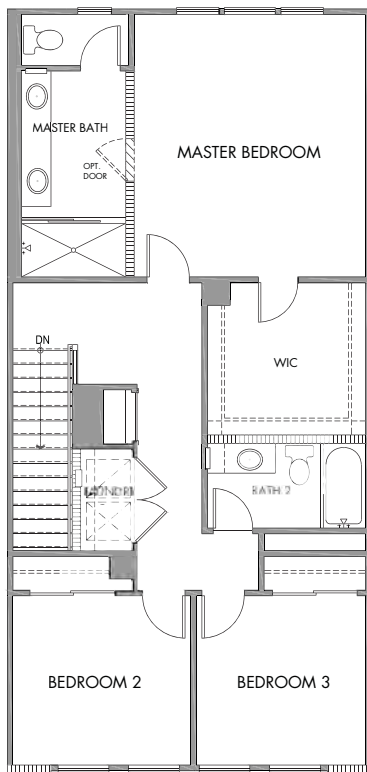


TOWN 12 - 13 - 14 • RESIDENCE 1

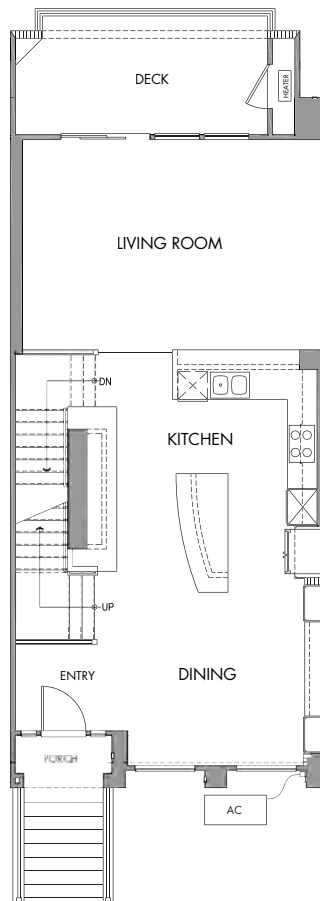
3 bedrooms - 2.5 baths - 1,862 approx sq. ft.



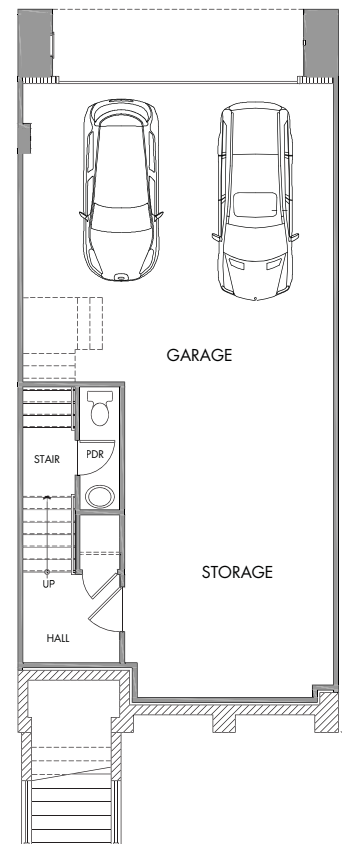
THIRD FLOOR



SECOND FLOOR



FIRST FLOOR



Town 12 & 14 are Reversed

TOWN 15 • RESIDENCE 1XA

3 bedrooms - 2.5 baths - 1,935 approx sq. ft.



Town 16 - 2C

Town 15-1XA

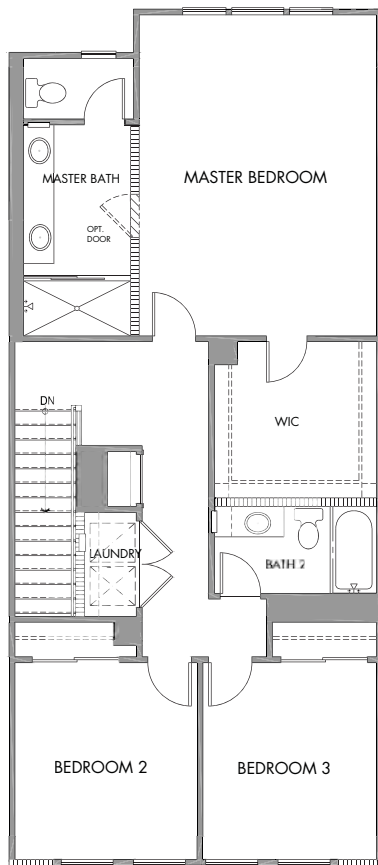
Town 14 - 1AR

Town 13 - 1B

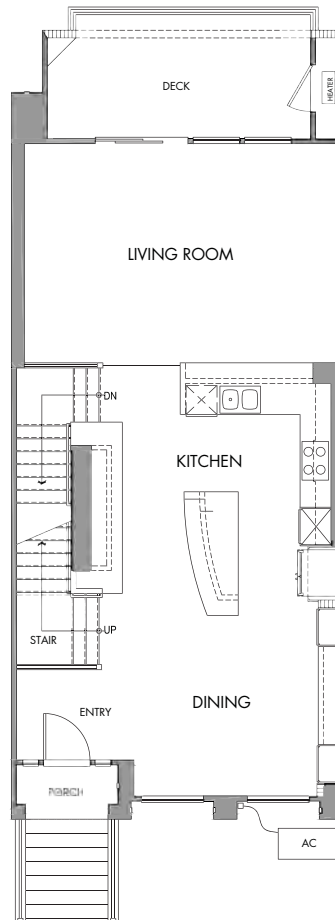
Town 12 - ER

Town 11- 3B

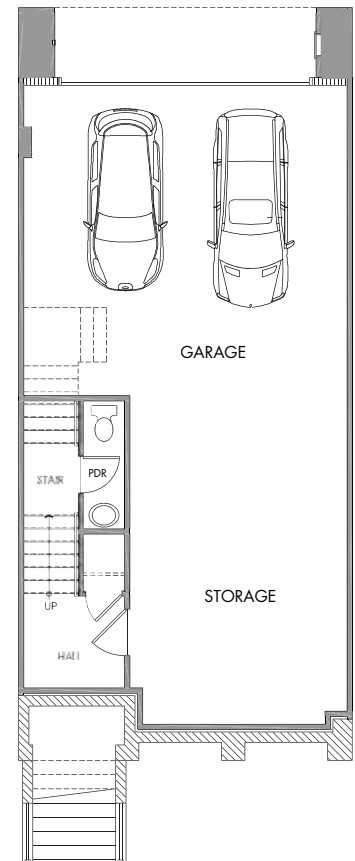
THIRD FLOOR



SECOND FLOOR



FIRST FLOOR





Town 16 - 2C

Town 15-1XA

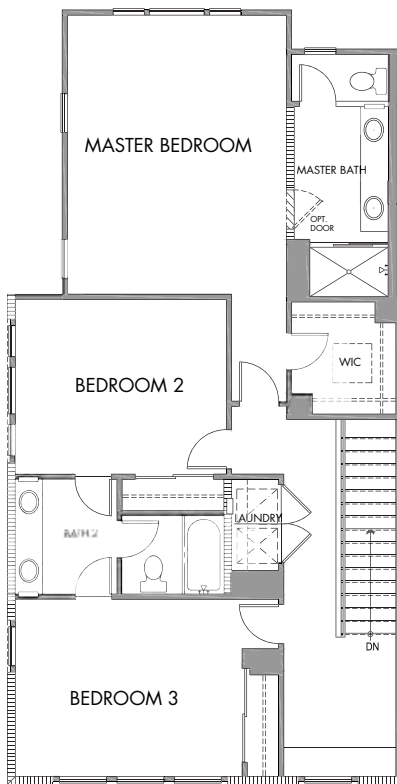
Town 14 - 1AR

Town 13 - 1B

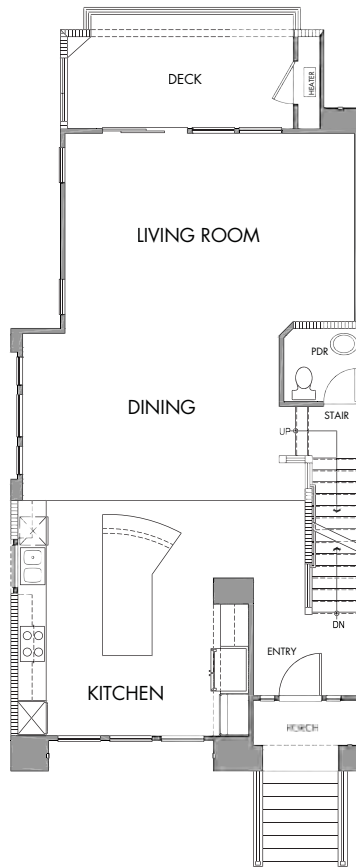
Town 12 - ER

Town 11-3B

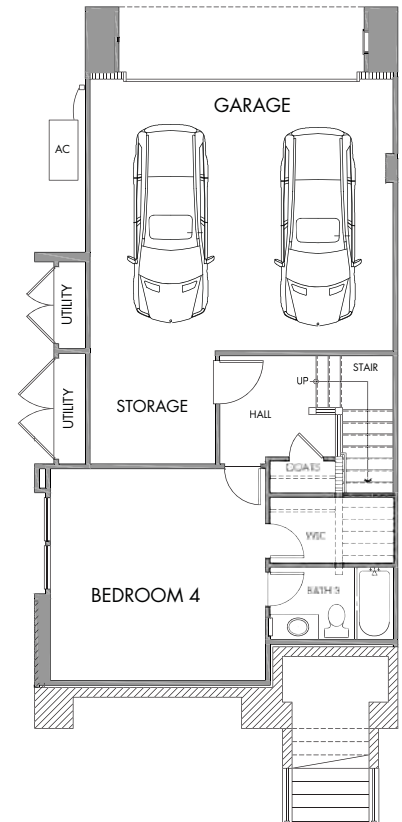
THIRD FLOOR



SECOND FLOOR



FIRST FLOOR



THE TOWNS FEATURE HIGHLIGHTS



Included Features

Home Features:

- Up To 4 Bedrooms And Up To Approximately 2,439 Sq. Ft.
- Wide Variety Of Elevations
- Baldwin / Schlage Hardware
- Laundry Rooms - Includes Both Gas And Electric Connections At Dryer Location.
- Brick Facade Per Elevation
- 12 X 12 Ceramic Tile Flooring Is Included In The Following Areas- Entry, Kitchen, All Baths And Laundry.
- Remaining Flooring Balance Is Wall-to-wall Carpet/pad.

Kitchen:

- Granite Slab, 6" Backsplash With Full Splash At The Cooktop, Square/eased Edge.
- Sterling, Stainless Steel Undermount Sink With Moen Pullout Chrome Faucet
- Bosch 30" Stainless Steel Cooktop Bosch 30" Stainless Steel Single Thermal Oven
- Bosch 30" Over Cooktop Microhood
- Bosch Stainless Steel Built-in Dishwasher
- Natural Maple Cabinets: "Sierra" Door Style, Finger Pull, White Interiors, & Adjustable Shelves At Upper Cabinets.

Bathrooms:

- Master Bath Counter: Engineered Stone In Choice Of Colors, Eased Or Bullnose Edge, 4" Backsplash
- Master Tub And Shower: Engineered Stone In Choice Of Colors
- Master Bath: Sterling Sink, Moen Chrome Faucets, Kohler Toilet
- Master Bath: Polished Edge Mirror
- Master Shower: ¼" Clear Glass Shower Enclosure, Chrome Trim
- Powder: Sterling, Pedestal Sink, Koehler Toilet And Moen Chrome Faucet & Oval Beveled Edge Mirror
- Secondary Bathrooms: Sterling Sinks, Toilet And Tub/showers. Moen Chrome Faucets & Beveled Edge Mirror
- Secondary Bath Counter: E Stone, White, Eased Or Bullnose Edge, 4" Backsplash
- Medicine Cabinets In All Baths (Except Powder Bathroom)

Doors & Windows

- Entry Door: Painted, 6-panel With Square Top, Therma-tru With Venetian Bronze Hardware.
- Interior Doors: Hollow-core, 2-panel, Painted (Smooth) With Polished Chrome Levers.
- Garage Doors: Metal, Insulated Doors Per Plan. With (1) Remote Per Parking Space.
- Windows: Vinyl White, Low E2 Glass.

Electrical:

- Interior: Leviton, White Decora Rocker Light Switches Throughout
- Pre-wire For Ceiling Fan (Living Room And Master Bedroom)
- 6" Recessed Can Lights (Locations Per Plan)
- Half Hot Duplex Outlets In Master And Secondary Bedrooms
- Exterior: (2) Waterproof Outlets (Locations Per Plan)
- Low Voltage: Universal Jacks (Locations Per Plan)
- Cat5e Phone In Kitchen And Master Bedroom
- Security Pre-wire (Only) With 110 Outlet At Master Bedroom Closet.
- Satellite Pre-wire (Only) To Se Attic Corner
- Heating: Carrier Natural Gas Furnace And 2 Or 3 Zoned Air Conditioning (Per Plan)
- Navien Tankless Water Heater With Re-circulating Pump.

Green Features

Included Green Features

- 79 Green Point Rated
- Tankless Hot Water Heater
- 15% Plus Over T-24 Requirements
- High Efficiency Irrigation Systems
- Energy Star Appliances
- Low Voc Paints, Caulking And Construction Adhesives
- Energy Star Bath Fans
- Hvac Filter Merv 8
- High Efficiency Air Conditioner With Environmentally Responsible Refrigerants

Optional Green Features

- Blown-in Insulation
- Owl Electricity Monitor

Personalize Your New Home For Your Lifestyle

Options And Upgrades

Multiple Variety On Selections For:

- Kitchen, Laundry And Closet Cabinets
- Kitchen And Bathroom Countertops
- Stairs Finish
- Flooring, Hardwood, Tile And Carpet

Upgrade Appliances

- 36" Built In Bosch Refrigerator
- Kitchen Sink - Executive Chef / Apron Front / Stainless Steel
- Cooktop, Dishwasher, Microhood & Oven
- Full Size Washer & Dryer

Bathrooms:

- Granite Slab, Eased Edge 6" Backsplash
- Tilted Mirror At Bath - Choice Of Finish
- Framed Wood Mirrors At Master Baths

Personalize Your Home

With Optional Features

At The Summerhill Design Studio.

Features mentioned here only apply to The Towns

SummerHill Homes reserves the right to alter floorplans, specifications, features, prices, and other information described in this brochure without notice or obligation. All room dimensions and home sizes are approximate and may vary depending upon elevation. Window sizes and locations, room sizes, floorplan, and patio/deck layouts are subject to change per plan location. SummerHill Homes energy savings features will vary depending upon the floor plans, elevations, design amenities and the location of the home. Actual energy costs and/or energy usage are dependent on a number of factors, including utility rates, energy consumption, home maintenance, size of household, energy conservation practices, home orientation, and surrounding climate and weather conditions. SummerHill utilizes only independent energy rating organizations. SummerHill has no business interest in any home energy efficiency evaluation organization, including Build It Green®, or GreenPoint®. SummerHill reserves the right to modify or vary features as requested or approved by a governmental entity and/or a third party rating system. Where solar is available, homebuyer may be eligible for Federal, State and/or Local incentives or credits. It is the sole responsibility of homebuyer to obtain available incentives or credits, if any. Statements contained herein are based upon information obtained from third parties and should not be used as the only source of information when making purchasing decisions, investment decisions or tax decisions, or when executing other binding agreements. All information contained in this brochure is qualified in its entirety by the Seller's Information Statement, which is incorporated herein by this reference. Contact community sales team for additional information at: info@shhomes.com DRE# 01301389 03/13

