

# encore

MAY 2019

a r t s p r o g r a m s



## MILLION DOLLAR **QUARTET**

Village Theatre

See the Seattle premiere of this  
Tony-nominated musical!

# BRIGHT STAR

INSPIRED BY A TRUE STORY

JULY 10 – AUGUST 17

Music, Book, & Story by  
Steve Martin

Music, Lyrics, & Story by  
Edie Brickell



204 N 85TH ST, SEATTLE  
TAPROOTTHEATRE.ORG  
206.781.9707

Wholesale and Retail Sales

Roasting fine coffees since 1993



400 N 43rd St. Seattle, WA. 98103

206-633-4775

[LIGHTHOUSEROASTERS.COM](http://LIGHTHOUSEROASTERS.COM)

May 2019  
Volume 18, No. 5

**encore**  
arts programs

Paul Heppner  
President

Mike Hathaway  
Senior Vice President

Kajsa Puckett  
Vice President, Sales & Marketing

Genay Genereux  
Accounting & Office Manager

**Production**

Susan Peterson  
Vice President, Production

Jennifer Sugden  
Assistant Production Manager

Ana Alvira, Stevie VanBronkhorst  
Production Artists and Graphic Designers

**Sales**

Marilyn Kallins, Terri Reed  
San Francisco/Bay Area Account Executives

Devin Bannon, Brianna Hansen,  
Amelia Heppner, Ann Manning  
Seattle Area Account Executives

Carol Yip  
Sales Coordinator

**Marketing**

Shaun Swick  
Senior Designer & Digital Lead

Ciara Caya  
Marketing Coordinator

**Encore Media Group**

425 North 85th Street  
Seattle, WA 98103  
p 800.308.2898 | 206.443.0445  
f 206.443.1246  
info@encoremediagroup.com  
www.encoremediagroup.com

Encore Arts Programs and Encore Stages are published monthly by Encore Media Group to serve musical and theatrical events in the Puget Sound and San Francisco Bay Areas. All rights reserved. ©2019 Encore Media Group. Reproduction without written permission is prohibited.



**THE EASTSIDE'S  
LIVE MUSIC  
VENUE.**

**Crossroads**  
BELLEVUE

**FREE LIVE PERFORMANCES EVERY WEEKEND**

[CROSSROADSBELLEVUE.COM](http://CROSSROADSBELLEVUE.COM)

# Village Theatre

**ROBB HUNT** Executive Producer

**JERRY DIXON** Artistic Director

# MILLION DOLLAR QUARTET

Book by  
**COLIN ESCOTT** and **FLOYD MUTRUX**

Original Concept and Direction by  
**FLOYD MUTRUX**

Inspired by  
**ELVIS PRESLEY, JOHNNY CASH, JERRY LEE LEWIS, and CARL PERKINS**

**Francis J. Gaudette Theatre**

May 9 – June 23, 2019

**Everett Performing Arts Center**

June 28 – July 28, 2019

Director  
**SCOTT WEINSTEIN**

Music Director  
**CHUCK MEAD**

Scenic Designer  
**ANDREA BRYN BUSH**

Costume Designer  
**ESTHER GARCIA**

Lighting Designer  
**GEOFF KORF**

Sound Designer  
**BRENT WARWICK**

Stage Manager  
**PAMELA CAMPI SPEE\***

Assistant Stage Manager  
**MIRANDA C. PRATT\***

Properties Manager  
**RACHEL BENNICK**

Wig Master  
**DOUGLAS DECKER**

Master Scenic Artist  
**JULIA B. FRANZ**

Production Manager  
**JAY MARKHAM**

Technical Director  
**BRADLEY C. BIXLER**

Originally developed and produced by Relevant Theatricals, John Cossette Productions and Northern Lights, Inc. at the Goodman Theatre, Robert Falls, Artistic Director – Roche Shulfer, Executive Director and transferred to The Apollo Theatre, Chicago, IL, 2008. Produced by Village Theatre, Issaquah, Washington, Robb Hunt, Producer – Steve Tomkins, Artistic Director, 2007 and Seaside Music Theater, Daytona Beach, FL, Tippin Davidson, Producer – Lester Malizia, Artistic Director, 2006.

#### SHOW SPONSORS



#### INDIVIDUAL SHOW SPONSORS

Dr. Richard and Bonnie Cavell  
Doris H. Gaudette  
Heather & Doug Goff  
Joanne Herber & The Late Gerald Herber  
Twyla & Tom Lucas

#### SHOW & SEASON MEDIA SPONSOR

**The Seattle Times**

#### SEASON SPONSORS



#### PRODUCING SPONSORS



#### DIRECTING SPONSOR



#### IN-KIND SEASON SPONSORS



#### TRAVEL SPONSOR



## VILLAGE THEATRE'S 2018-2019 SEASON

THE NOTEWORTHY LIFE  
OF HOWARD BARNES  
September 13 – November 18, 2018

MATILDA  
November 8, 2018 –  
February 3, 2019

I DO! I DO!  
January 17 –  
March 24, 2019

THE CURIOUS INCIDENT OF THE  
DOG IN THE NIGHT-TIME  
March 14 – May 19, 2019

**MILLION DOLLAR  
QUARTET**  
May 9 – July 28, 2019



# A Note from Robb Hunt

Welcome to the theatre and our fresh new production of *Million Dollar Quartet*! This show is an important part of Village Theatre's history, and we couldn't be more proud to bring you this production, with some of the greatest talent out there. Ever since the 2007 World Premiere production of this show, our audiences have been clamoring for us to do it again. It has been a top write-in vote on our Season Survey year after year, and when we finally added it to the ballot as an official option for this Season, it was far-and-away the number one choice across all audiences.

There's an article later in this program about the history of the show and how it all came to be, but it really comes down to an incredible group of people working together to bring the show from concept, to page, to stage. And we're honored and delighted that many of those people are back for this production and/or are still a part of the Village Theatre family. I particularly want to celebrate the return of Chuck Mead, who was the music director in 2007 and is back again for this production. We also want to welcome Scott Weinstein, who is making his Village Theatre directorial debut, but has been at the helm for numerous productions of the show across the country and has done an incredible job with this one.

The *Million Dollar Quartet* story wouldn't be complete without Ted Rawlins, who was an original producer and driving force behind the show. Since this production, we have developed a great relationship with Ted, who has also worked with us to bring Stephen Schwartz's *Snapshots* to the stage, and has a few other projects working in the background.

In addition to being a growth point for Village Theatre's family, this show has become a part of Village Theatre's identity. It was the first show to go from our Festival of New Musicals, to the Mainstage, to Broadway – followed just a few years later by *It Shoulda Been You*. It's a true testament to the importance of our Village Originals program and Village Theatre's mission "to commission and produce new musicals that achieve national exposure."

And now, we get to welcome new talents to the stage and to our family. This cast is made up of some of the most dynamic performers who have already taken on these roles around the world, and we know they are going to blow you away. It's a joyous and exciting way to close out our 39<sup>th</sup> Season and move into our 40<sup>th</sup> Anniversary. We hope you enjoy the show.

Robb Hunt  
Executive Producer

## Cast

Sam Phillips .....	Matt Wade
Carl Perkins .....	Skye Scott*
Johnny Cash .....	Brian Grey*
Elvis Presley .....	Jason Kappus*
Jerry Lee Lewis .....	John Countryman*
Dyanne .....	Cayman Ilika*
Drummer/Fluke .....	James "Rif" Reif
Bassist/Brother Jay.....	Chris Jones

### UNDERSTUDIES

Sam Phillips .....	Casey Raiha
Johnny Cash/Carl Perkins .....	Jack Dearth
Jerry Lee Lewis .....	Jeffrey Wilsor
Elvis Presley .....	Nate McVicker
Dyanne .....	Quinn Tierney Vaira

\*The Actors and Stage Manager are members of the Actors' Equity Association, the Union of Professional Actors and Stage Managers in the United States

## Musical Numbers

The shows runs approximately 90 minutes without an intermission

"Blue Suede Shoes" .....	Company
"Real Wild Child" .....	Jerry Lee Lewis
"Matchbox" .....	Carl Perkins
"Who Do You Love?" .....	Carl Perkins
"Folsom Prison Blues" .....	Johnny Cash
"Fever" .....	Dyanne
"Memories Are Made of This" .....	Elvis Presley
"That's All Right" .....	Elvis Presley
"Brown Eyed Handsome Man" .....	Company
"Down by the Riverside" .....	Company
"Sixteen Tons" .....	Johnny Cash
"My Babe" .....	Carl Perkins
"Long Tall Sally" .....	Elvis Presley
"Peace in the Valley" .....	Company
"I Walk the Line" .....	Johnny Cash
"I Hear You Knockin'" .....	Dyanne
"Party" .....	Carl Perkins and Company
"Great Balls of Fire" .....	Jerry Lee Lewis
"Down by the Riverside" ( <i>Reprise</i> ) .....	Company
"Hound Dog" .....	Elvis Presley
"Riders in the Sky" .....	Johnny Cash
"See You Later, Alligator" .....	Carl Perkins and Company
"Whole Lotta Shakin' Goin' On" .....	Jerry Lee Lewis and Company

## Special Thanks

Rod "Red" Gibson – Christie Lites Seattle



# Production Team

Director.....	Scott Weinstein
Music Director.....	Chuck Mead
Scenic Designer.....	Andrea Bryn Bush
Lighting Designer.....	Geoff Korf
Costume Designer.....	Esther Garcia
Sound Designer.....	Brent Warwick
Associate Sound Designer.....	Haley Parcher
Assistant Lighting Designer.....	Amber Parker
Stage Manager.....	Pamela Campi Spee*
Assistant Stage Manager.....	Miranda C. Pratt*
Production Assistant.....	Colleen Nielsen
Music Captain.....	Skye Scott*
Technical Director.....	Bradley C. Bixler
Assistant Technical Directors.....	Andre Burman, Adam Michard
Stage Operations Supervisor.....	Stacey A. Garrett
Master Carpenter.....	Patrick Sherman
Lead Carpenters.....	Justine Halsey-Martin, Jason Tribby, Mark Zetterberg
Carpenters.....	Jeff Manzolli, Melina Harris
Production Technicians.....	Steven Coney, Kayla Duncan, Sam Izenman, Peter King, Kcarie Ingerson, David Mackie, Kate Takata
Properties Manager.....	Rachel Bennick
Master Properties Artisan.....	Chloe Kirkwood
Lead Properties Carpenter.....	Tommy Price
Master Scenic Artist.....	Julia B. Franz
Lead Scenic Artists.....	Rachele Wirrick, Carmen Rodriguez
Scenic Artist.....	Kevin Koch
Costume Shop Manager.....	Esther Garcia
Costume Shop Assistant.....	Hannah Coleman
Costume Design Assistant.....	Brynne McKeen
Tailor.....	Beth Gilroy
Cutter.....	Andrea Herman
Master Crafts.....	Samantha Shields
Stitcher.....	Melissa Gomez
Wig Master.....	Douglas Decker
Company Manager.....	Jessi Wasson
Associate Production Manager.....	Caitlin McCown
Casting Director.....	Jessica Spencer
Resident Music Director.....	Tim Symons
Production Manager.....	Jay Markham
Associate Artistic Director.....	Brandon Ivie
Artistic Director.....	Jerry Dixon
Executive Producer.....	Robb Hunt

# Crew

Master Stage Carpenter ( <i>Issaquah</i> ).....	Whitman Paylor
Master Stage Carpenter ( <i>Everett</i> ).....	Chris Mikolaizik
Master Sound Engineer ( <i>Issaquah</i> ).....	Brent Warwick
Master Sound Engineer ( <i>Everett</i> ).....	Kurt Conway
Wardrobe Master ( <i>Issaquah</i> ).....	Heather Address
Wardrobe Master ( <i>Everett</i> ).....	Pamela Weinzatl
Master Electrician ( <i>Issaquah</i> ).....	Paul Arnold
Master Electrician ( <i>Everett</i> ).....	Paul Sharp
Followspots.....	Jenna Kearns, Edward Rayner



**GSBA is Washington State's LGBTQ and allied chamber of commerce, and the largest of its kind in North America.**



**GSBA offers more than 20 FREE Business Development Workshops, and dozens of opportunities to connect, network, and grow your business.**



**FIND OUT MORE ABOUT HOW YOU COULD BE PART OF THE WASHINGTON LGBTQ BUSINESS ECONOMY.**

**theGSBA.ORG**

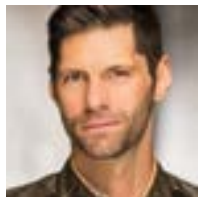
# Who's Who

## Cast



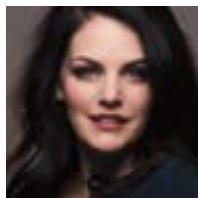
**JOHN COUNTRYMAN\*** (*Jerry Lee Lewis*) has been an avid fan of rock 'n' roll since childhood. John has been seen in *Million Dollar Quartet* productions nation-

wide. MDQ credits include: the 2013/14 Broadway National tour, productions in Chicago, Las Vegas, and Fireside Dinner Theater. John would like to thank his family for their support and his mother for showing him his first piano licks!



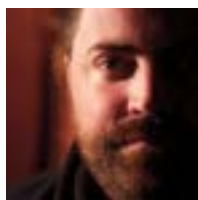
**BRIAN GREY\*** (*Johnny Cash*). Brian lives in Chicago. Credits include: Chicago Shakespeare Theater, Steppenwolf Theatre, Goodman Theater, Windy City

Playhouse, Chicago Children's Theatre - among others. Television: "Chicago Med" (NBC); "A.P.B." (Fox). Education: MFA CCPA/ Roosevelt University; the Pacific Conservatory of the Performing Arts (PCPA). When not pretending to be other people, Mr. Grey teaches Yoga. Love to Masha and Angela. [briangrey.net](http://briangrey.net)



**CAYMAN ILIKA\*** (*Dyanne*). Village Theatre: *Mary Poppins* (*Mary Poppins*) and *Show Boat* (*Julie*). The 5th Avenue Theatre: *Kiss Me, Kate* (*Lilli/ Kate*). The 5th Avenue

Co-productions: *Jacques Brel is Alive and Well...* and *Vanities* (*Kathy*) at ACT Theatre, and the world premiere of *Beatsville* at the Asolo Repertory Theatre in Sarasota. Musical Theatre West: *Oliver!* (*Nancy*). Taproot Theatre Company: *Always... Patsy Cline* (*Patsy*) and *Persuasion* (*Anne Elliot*). [CaymanIlika.com](http://CaymanIlika.com)



**CHRIS JONES** (*Brother Jay, Bassist*) previously played the role of Brother Jay in the 2006 reading of *Million Dollar Quartet* at The Village Originals Festival of

New Musicals. He has played bass in Village Theatre's pit orchestra for over 40 shows, starting in 2005 with the Mainstage production of *Cats*. He is also a member of the Andy Coe Band, a psychedelic rock quartet based in Seattle.



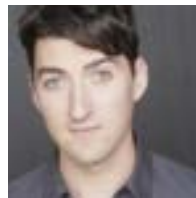
**JASON KAPPUS\*** (*Elvis Presley*). Village Theatre: *Hairspray*, *Meet Me in St. Louis*, *Aida*, *Stunt Girl*, *Evita*, *Hello Dolly!*... Broadway: *American Idiot*. National Tour:

*Jersey Boys*, *Legally Blonde*. The 5th Avenue Theatre: *West Side Story*, *Catch Me If You Can*. Seattle Children's Theatre: *High School Musical*, *The Wizard of Oz*. To Loni, Bubba & Meemers, this lovely theatre, and all you patrons of the arts: "Thank you. Thank you very much."



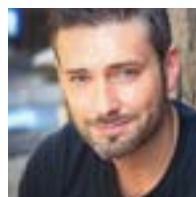
**JAMES "RIF" REIF** (*Fluke, Drummer*). Who says you can't go back? After being onstage with the original Village Theatre production of *Million Dollar Quartet* 12 years

ago, Rif will be back at Sun Records reprising the role of Fluke. With 28 years in the Village Theatre orchestra, favorite productions include: *The Who's TOMMY*, *Jesus Christ Superstar*, *In the Heights*, *Dreamgirls*, and *Hairspray*. Love to Jen, Lucas, and Jack.



**SKYE SCOTT\*** (*Carl Perkins*) Broadway Tours: *Million Dollar Quartet* and *Jersey Boys*. Off-Broadway: *Jersey Boys* (*Crewe*). Originated the role of Hall of Fame guitarist

Steve Cropper in *Soul: The Stax Musical* at Baltimore Center Stage. Other favorites: *Baz* (*Gatsby*) at the Palazzo in Las Vegas, *Love Actually Live* (*Mark*) at the Wallis in LA. BFA - Carnegie Mellon School of Drama. Love to S+B! [theskyescott.com](http://theskyescott.com)



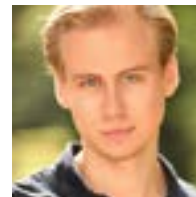
**MATT WADE** (*Sam Phillips*) fell in the luck-bucket returning to Village Theatre for a bucket-list show after singing several of these songs weekly on a Mississippi riverboat.

At Village Theatre: *Les Misérables*, *Big River*, *The Producers*, *Jesus Christ Superstar*, and *Beauty and the Beast*. National tours: *The Producers*; *Oklahoma!* This show is dedicated to mama who always proved that nothing is more powerful than rock, except paper.



**JACK DEARTH** (*Johnny Cash u/s*, *Carl Perkins u/s*) is an actor and musician with a BA in drama: performance and law, societies, and justice from the University of

Washington. Jack has appeared most recently as Aster in *Peter and the Starcatcher*, Cable in *South Pacific*, and in *Dirty Rotten Scoundrels*. Jack has also played lead guitar in *Hedwig and the Angry Inch*, *Working the Musical*, and *Ring of Fire*.



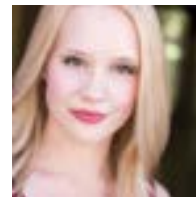
**NATE MCVICKER** (*Elvis Presley u/s*) is itching like a man on a fuzzy tree to make his Village Theatre debut! Recent credits include: The 5th Avenue Theatre: *Annie*, *Mamma*

*Mia!*; Showtunes: *Legally Blonde* (Warner), ...*Molly Brown*; Bainbridge Performing Arts: *Xanadu* (Sonny); SecondStory Repertory: *Spring Awakening* (Melchior). Proud PPU and Village Theatre KIDSTAGE alum. This one's for grandpa. Check out his #understudyseason updates and follow him @NateMcV



**CASEY RAIHA** (*Sam Phillips u/s*) Village Theatre: Sergei, Trunchbull u/s in *Matilda*, Diction Coach in *Singin' in the Rain*, Charlie Davenport in *Annie Get Your Gun*.

Local: Lysander in *A Midsummer Night's Dream* (Seattle Shakes), Monty in *Violet* (Artswest), Sam Phillips in *Million Dollar Quartet* (CDA Summer Theatre.) Voice Over Artist for Amazon Rapids and Amazon Storytime. "Love to Kelsey and my folks!" [CaseyRaiha.com](http://CaseyRaiha.com)



**QUINN TIERNEY VAIRA** (*Dyanne u/s*) is a Montana-native who is thrilled to be making her big-city, Village Theatre debut amongst these super cool musicians! Recent

credits include: Sally in *This Is Halloween* with the Can Can; Brooke in *Legally Blonde* at Coeur d'Alene Summer Theatre; Dyanne in *Million Dollar Quartet* at Peach State Summer Theatre. She is eternally grateful for those who continuously love and support her. [quinnvaira.com](http://quinnvaira.com)



# My legacy. My partner.

You have dreams. Goals you want to achieve during your lifetime and a legacy you want to leave behind. The Private Bank can help. Our highly specialized and experienced wealth strategists can help you navigate the complexities of estate planning and deliver the customized solutions you need to ensure your wealth is transferred according to your wishes.

Take the first step in ensuring the preservation of your wealth for your lifetime and future generations.

**To learn more, please visit [unionbank.com/theprivatebank](https://unionbank.com/theprivatebank) or contact:**

**Lisa Roberts**

Managing Director, Private Wealth Management

[lisa.roberts@unionbank.com](mailto:lisa.roberts@unionbank.com)

415-705-7159



Wills, trusts, foundations, and wealth planning strategies have legal, tax, accounting, and other implications. Clients should consult a legal or tax advisor.



©2019 MUFG Union Bank, N.A. All rights reserved. Member FDIC.  
Union Bank is a registered trademark and brand name of MUFG Union Bank, N.A.



# YOU DON'T NEED A TICKET TO SEE THE BEST MEDICAL TALENT IN THE REGION.

Virginia Mason's award-winning cast of primary and specialty care physicians are committed to delivering remarkable adult and pediatric care. We have nine regional medical centers, a virtual online clinic and a growing list of walk-in care clinics to choose from in the Puget Sound area. And Virginia Mason is included in most insurance plans, so chances are good we're in your neighborhood and your network.

**VISIT VIRGINIAMASON.ORG  
TO FIND THE CLINIC NEAREST YOU.**



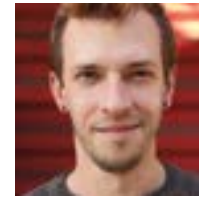
Virginia Mason is the only hospital in the Pacific Northwest (WA, OR, ID) to be named one of Healthgrades® America's 50 Best Hospitals™ for three consecutive years.

Be Remarkable.  
[VirginiaMason.org](http://VirginiaMason.org)

©2019 Virginia Mason



## Who's Who



**JEFFREY WILSOR**  
(*Jerry Lee Lewis u/s*).  
Favorite past projects include: *Big River* (Huck Finn), *Batboy*, and the new musical *Freedom's Song*. After years of performing in Nashville,

New York, and all around the country, Jeffrey settled in Seattle where he now works as a music minister, arranger, and composer and is pursuing a degree in music production. He studied musical theatre performance at Belmont University. Love to Dustin, Luna, and Orion.

## Production Team

**SCOTT WEINSTEIN** (*Director*) is thrilled to make his Village Theatre debut. Scott is a multiple Jeff Award winning director, most recently for his newly conceived chamber version of *Ragtime* with Griffin Theatre where he is a company member. Other favorite credits include: *Violet* (Jeff Nom - Best Director) and *Titanic* (Jeff Nom - Best Director, Production) both with Griffin; *Rock of Ages* (Drury Lane Theatre); *Murder For Two* (Marriott Theatre); *Becky Shaw* and *Noises Off* (Windy City Playhouse); *Rent* at Theo Ubique (Jeff Award - Best Director, Best Musical); *She Kills Monsters* (Steppenwolf Theatre Garage Rep); *Seussical* (Chicago Shakespeare Theater); *Million Dollar Quartet* (Fingerlakes Music Theatre Festival, Phoenix Theatre); *Upright Grand* (Citadel Theatre) and the world premieres of *Baristas* (New York International Fringe Festival) and *Knights of The Sales Office* (Adirondack Theatre Festival). He is a company member with Redtwist Theatre where he has directed *Frost/Nixon*, *Circle Mirror Transformation*, and *The Drawer Boy* among others. Scott is the recipient of a Berkshire Theatre Festival Directing Fellowship and a Stage Directors and Choreographers Observership. He was the associate and resident director for the Broadway National Tour, Las Vegas and Chicago productions of *Million Dollar Quartet*. He directs the resident production on Norwegian Cruise Lines as well as regional productions across the country. He has developed new work at Pittsburgh CLO, The American Music Theatre Project, The Marriott Theatre, Route 66 Theatre, Porchlight Theatre and others. Proud graduate of Northwestern University and member of the Stage Directors and Choreographers Society. [ScottGWeinstein.com](http://ScottGWeinstein.com)

**CHUCK MEAD** (*Music Director*) is a renowned musician, singer/songwriter, producer, music director, musicologist, and architect behind the rebirth of Lower Broadway in Nashville and the Global Neo Traditional Country music movement. He has been at the forefront of what has come to be known as Americana Music for the better part of 25 years. Perhaps best known for co-founding the famed '90s Alternative



Country quintet, BR5-49, whose seven albums garnered a CMA Award for Best International Touring Act and three Grammy nominations, helped build an indelible bridge between authentic American Roots music and millions of fans worldwide. Since then he's toured the globe, entertained thousands, released three solo albums, made 138 appearances on the *Grand Ole Opry*, co-produced critically acclaimed tribute albums to Johnny Cash & Waylon Jennings, and acted as the original musical director/supervisor of *Million Dollar Quartet* on Broadway AND the companion CMT television show *Sun Records*. With a deep connection to Memphis and a desire to keep building musical bridges, Chuck recorded at legendary Sam Phillips Recording Studios, the result of which, *Close To Home*, is scheduled for release June 28, 2019 on Plowboy Records. He is also currently working on new theatrical productions and developing television shows.

**ANDREA BRYN BUSH** (*Scenic Designer*) is returning to Village Theatre, having previously designed *Pump Boys and Dinettes* (2016) and *Crimes of the Heart* (2016). She is a scenic designer who works with many companies across town including: Seattle Children's Theatre, Intiman Theater, NCTC, Book-It Repertory Theatre, Seattle Shakespeare Company, Seattle Public Theater, Contemporary Classics, Azeotrope, and Cornish College of the Arts. She was formerly an Ensemble member and resident designer at Washington Ensemble Theatre. Andrea is a MFA graduate from UW where she is currently on staff in the scene shop. She received the 2010 Gregory Award for outstanding scenic design.

**ESTHER GARCIA** (*Costume Designer*) has designed for opera, modern dance, theatre, and burlesque. This is her first Mainstage costume design with Village Theatre. Esther has a BFA from the University of Oregon with an emphasis in costume design. She spent five seasons with the Eugene Opera as the resident designer and costume shop manager and was resident designer for Lane Community College Theatre and Dance Department, Eugene, OR. Favorite designs include *La Cenerentola*, *Così fan tutte*, *Susanne*, *Pagliacci*, *Carmen*, *A Little Night Music*, *The Magic Flute*, *HMS Pinafore*, and designer to Seattle-based international artist, The Shanghai Pearl.

**GEOFF KORF** (*Lighting Designer*) returns to Village Theatre after designing the lighting for *Pump Boys and Dinettes*. Recent designs in Seattle include: *Richard III* and *Bring Down the House* for Seattle Shakespeare and *The Crucible* at ACT Theatre. Geoff has designed lighting for more than three hundred productions of which more than one third have been world premieres. Geoff is a member of the ensemble of Cornerstone Theater in Los Angeles and serves as the interim associate director of the School of Drama at the University of Washington. Geoff is a graduate of California

# SEATTLE OPERA. HEARTLESS



verdi  
**RIGOLETTO**  
**AUGUST 10-28**

### THE COST OF CORRUPTION

Verdi's thrilling tale of lechery, betrayal, and revenge runs the emotional gamut in true operatic fashion while filling the stage with brilliant melodies, including the iconic "La donna è mobile". This powerful and evocative new staging mixes grit and glamour while drawing comparisons to newsmakers of today.

### NEW-TO-SEATTLE PRODUCTION!

In Italian with English subtitles.  
**Evenings 7:30 PM**  
**Sundays 2:00 PM**

**MCCAW HALL**  
**206.389.7676**  
**SEATTLEOPERA.ORG/RIGOLETTO**

2019/20 SEASON SPONSOR: **IN MEMORY OF KARYL WINN**  
PRODUCTION SPONSOR: **KREIELSHEIMER ENDOWMENT FUND**

© Philip Newton

# Who's Who

State University, Chico and the Yale School of Drama.

**BRENT WARWICK** (*Resident Sound Designer*) is happy to have been on the Village Theatre team since 2008 starting with *Beauty and the Beast*. Brent has been the resident sound designer for the last seven Seasons where some of his favorite design credits include: *Les Misérables*, *Billy Elliot*, *The 39 Steps*, and *Hairspray*. Brent has also worked as a sound designer and engineer for the Knutzen Family Theatre, Princess Cruises, and Teatro ZinZanni. Brent has a degree in computer science and his own audio/video production business. Love to his wife, Haley.

**HALEY PARCHER** (*Associate Sound Designer*) is happy to be working with this excellent team. This is Haley's sixth Season working in the Village Theatre sound department. Favorite sound design credits include: *American Idiot*, *Violet*, *The Nance* (ArtsWest), and *Anything Goes* (UW School of Drama). Favorite associate credits include: *Mamma Mia!* and *Kiss Me Kate* (The 5th Avenue Theatre), *Artney Jackson* and *Seared* (Williamstown Theatre Festival), *Little Shop of Horrors* (Broadway Center Stage at the Kennedy Center), *Dreamgirls*, and *Hairspray* (Village Theatre). Love to Brent and her parents.

**PAMELA CAMPI SPEE\*** (*Stage Manager*). Previous Village Theatre Mainstage as stage manager: *Matilda*, ...*Howard Barnes*, *String*, *Newsies*, *Dreamgirls*, *The 39 Steps*, *Crimes of the Heart*; as assistant stage manager: *Billy Elliot the Musical*, *Snapshots*, *Xanadu*, *Fiddler on the Roof*, *It Shoulda Been You*, *Annie Get Your Gun*, *Iron Curtain*, *Anne of Green Gables*, *The Gypsy King*, and others. She has worked around Seattle at Seattle Children's Theatre, Taproot Theatre Company, Seattle Shakespeare Company, The 5th Avenue Theatre, ArtsWest, and ACT. She recently worked as the production assistant for the national tour of *Hamilton*. LOVE to her favorite leading man and Miss Hunter!

**MIRANDA C. PRATT\*** (*Assistant Stage Manager*) is excited to spend another rockin' summer at Village Theatre – she has spent the last five Seasons ASMing here, most recently on *Matilda*. She also works regularly at Seattle Shakespeare Company and when she has time, loves to stage manage *14/48: The World's Quickest Theatre Festival* which is easily one of her favorite things in Seattle. In addition to stage managing, Miranda is also a competitive powerlifter and is studying to be a nutritionist. She is currently celebrating her 10th year in Seattle!

**BRADLEY C. BIXLER** (*Technical Director*). This is Brad's 19th Season with Village Theatre. Brad has been working in technical theatre for

the past 29 years at companies around the area including: Intiman Theatre, Seattle Children's Theatre, Mount Baker Theatre, Civic Light Opera, and Pacific Studios. He graduated from Western Washington University with a BA in technical theatre. Brad would like to thank Suzie, Colin, and Charlie for their continued support and encouragement.

**RACHEL BENNICK** (*Properties Manager*). This is Rachel's first Mainstage Season with Village Theatre. Rachel has been working in technical theatre for the past eight years at companies around the country, including: NYC's Julliard, Baltimore Center Stage, and most recently South Coast Repertory Theatre in Orange County. She graduated from The University of Texas with a BA in technical theatre with a scenic design and props emphasis.

**JULIA B. FRANZ** (*Master Scenic Artist*). This is Julia's 124th Mainstage show in her 25th Season as master scenic artist for Village Theatre. Julia is privileged to work with some of the best scenic carpenters, property artisans, and fellow scenic artists. Julia would especially love to welcome Maybelline, golden retriever and "Curious" pup, into her life and her paint shop. Life is better when there's a dog to share it with. Love to Steven, best friend, fellow traveler, and husband.

**DOUGLAS DECKER** (*Wig Master*) has been at Village Theatre since *Making Tracks*. He has done wigs for pretty much every theatre in town, including: Intiman Theatre, Seattle Children's Theatre, and Seattle Shakespeare Company. Doug keeps asking the actors to stop moving around so much . . .

**CAITLIN MCCOWN** (*Associate Production Manager*) is enjoying her second Season at Village Theatre. Prior to joining Village staff, Caitlin was the venue & production manager for West of Lenin in Seattle. Caitlin freelances as an actor, director, and scenic designer and has worked with Seattle Public Theatre, Harlequin Productions, Island Stage Left, Theater Shmeater, Fantastic.Z, Macha Theatre Works, and Twelfth Night Productions, among others. Caitlin holds a BA in theatre & film and an MA in theatre arts & dance, and is the managing director of Many Hats Theatre.

**JESSICA SPENCER** (*Casting Director*) couldn't be happier to work with this team in the thriving Seattle theatre community. Jessica has worked around the country in arts management, administration, and production for such companies as: Arts Center Enterprises, Inc., Nebraska Theatre Caravan, and locally for Taproot Theatre Company and The Inverse Opera. As a director, Jessica has also had the privilege to work with such companies as Taproot Theatre Company, ArtsWest, SHOWTUNES, SecondStory Repertory, and KIDSTAGE. Love to her motley crew of Roo,

Raija, Wynter and the many babysitters and dog-walkers that make life possible.

**TIM SYMONS** (*Resident Music Director*) is in his 14th Season as resident music director at Village Theatre, during which he has music directed over 25 Mainstage shows including: *Matilda*, *Into the Woods*, *Billy Elliot*, *Cabaret*, *Funny Girl*, *Big River*, *Jesus Christ Superstar*, *The Full Monty*, and *The Who's TOMMY*. Other credits include: *The Hunchback of Notre Dame*, *Romy & Michele's High School Reunion* (The 5th Avenue Theatre), *Assassins* (ACT), *Naked Mole Rat Gets Dressed* (Seattle Children's Theatre), *Man of La Mancha* (Arizona Theatre Company). Tim is one third of Seattle jazz trio Fawcett, Symons and Fogg. Love to Taylor!

**JAY MARKHAM** (*Production Manager*) has worked as Village Theatre's production manager on over 70 productions since 2004. With a background in stage management, technical theatre, corporate events, and concert production, Jay approaches theatre with an understanding that the great achievements of any organization are the combined efforts of each individual. Favorite projects include: *Dreamgirls*, *The Who's TOMMY*, *Les Misérables*, *Million Dollar Quartet*, *Earth, Wind & Fire*, *Jesus Christ Superstar*, and *Show Boat*. Love to Huckleberry, Ignatius, and Aimee.

**ACTORS' EQUITY ASSOCIATION (AEA)**, founded in 1913, represents more than 48,000 actors and stage managers in the United States. Equity seeks to advance, promote, and foster the art of live theatre as an essential component of our society. Equity negotiates wages and working conditions, providing a wide range of benefits including health and pension plans. AEA is a member of the AFL-CIO, and is affiliated with FIA, an internal organization of performing arts unions. The Equity emblem is our mark of excellence. [actorsequity.org](http://actorsequity.org)

 The Director is a member of the STAGE DIRECTORS AND CHOREOGRAPHERS SOCIETY, a national theatrical labor union.



All stage work performed by members of IATSE Local 15.



All costume construction and hair/make-up work is performed by employees represented by I.A.T.S.E. TWU Local #887.



All scenic painting work is performed by employees represented by IATSE Local 488.



United Scenic Artists represents the designers and scenic painters for the American Theatre.



The actors and stage managers employed in this production are members of Actors' Equity Association, the union of professional actors and stage managers in the United States.



The theatre operates under an agreement with Local 76-493, American Federation of Musicians, AFL-CIO, representing the musicians.





Village Theatre

# JOIN THE CELEBRATION! 2019-2020 SEASON

## The 25<sup>th</sup> Annual Putnam County Spelling Bee

A zany, fast-paced, irreverent, comedic hit that follows an eclectic group of middle schoolers as they fight for the title of spelling bee champ. This unforgettable experience chronicles the joy, heartache, and passion of those who love to compete.

SEPT 12 - NOV 17, 2019



## Guys & Dolls

Considered by many to be the perfect musical comedy, this brassy and colorful musical has been an iconic crowd-pleaser since it first hit Broadway in 1950. *Guys & Dolls* is a non-stop treat full of romance, hilarity, and irresistible charm.

NOV 7, 2019 - FEB 2, 2020



## She Loves Me

From the combined talents of the creators of *Fiddler on the Roof* and *Cabaret* comes the musical romance that inspired the hit film *You've Got Mail*. *She Loves Me* is a warm romantic comedy with an endearing innocence and a touch of old world elegance.

JAN 16 - MAR 22, 2020



## Hansel & Gretl & Heidi & Günter

Gretl - yes, that Gretl - is now a single mom living in Chicago with her 21<sup>st</sup> century kids. When long-lost Uncle Hansel shows up, they are plunged into an unexpected adventure that brings the family together. This smart and bold new musical is a riotous tumble of past and present that will leave you grinning.

MAR 12 - MAY 17, 2020



## The Wedding Singer

A like, totally radical musical based on the hit film, this romantic comedy is a feel-good party that will have you dancing in your seat. This retro gem features a lively and fun original score, and is a high-energy celebration of the 80s.

MAY 7 - JULY 26, 2020



SUBSCRIBE TODAY FOR THE BEST SEATS AT THE BEST PRICE! | [VILLAGETHEATRE.ORG](http://VILLAGETHEATRE.ORG)



# AROUND THE WORLD AND HOME AGAIN

## A HISTORY OF *MILLION DOLLAR QUARTET*

It all started with a meeting between Robb Hunt and Ted Rawlins. They met through the National Alliance of Musical Theatre (NAMT). Robb, Village Theatre's Executive Producer, has been a long-time member of NAMT, including serving as a board member and active participant for many years.

Ted worked in the theatrical division of a film company, and had a connection with Floyd Mutrux, who was known for his "rockumentaries" or documentaries about the rock industry. Floyd was interested in the Sun Records jam session of Johnny Cash, Jerry Lee Lewis, Elvis Presley, and Carl Perkins – thus *Million Dollar Quartet* was born. Before long, *Million Dollar Quartet* was added to The 2006 Festival of New Musicals by Associate Artistic Director Brian Yorkey.

It was an unusual show – requiring actors who were not only experts in the instruments and music of the characters, but resembled them enough to pass it off. Not an easy task when you're talking about true pop-culture icons like Elvis Presley. And for the show to work, the cast had to be perfect. So, Robb and Brian flew to Los Angeles to attend auditions with Ted and Floyd, found a team, and brought them up to Issaquah to join some talented performers from Seattle for The Festival reading. That original show included Lance Guest as Johnny Cash and Rob Lyons as Carl Perkins, both of whom would go on to perform their roles on Village Theatre's Mainstage, then on Broadway, and around the world.

Village Theatre hosted another smaller reading shortly after the first, to help refine the show before it went on to Seaside Musical Theatre in Florida, who put on a small-scale full production.

Seeing the show on stage in Florida solidified what Robb and Brian had already known: they had a hit on their hands.

*Million Dollar Quartet* opened on Village Theatre's Mainstage in Fall of 2007. The cast once again featured Lance Guest and Rob Lyons from the original reading, and added Levi Kreis as Jerry Lee Lewis. This production also featured music direction by Chuck Mead, who went on to be the musical supervisor on Broadway.



The show immediately saw record-breaking success with audiences. The run enjoyed an unprecedented extension in Everett to accommodate popular demand and, true to the show's name, ticket sales exceeded a million dollars. To this day, it remains the record-breaking show at Village Theatre as both the best-selling new musical ever produced, and the best-selling show to take place in the Fall.

From there, the show moved to Chicago, first to Goodman Theatre



**1956**  
Million Dollar Quartet  
Recording Session



**2006**  
Village Originals  
Festival of New Musicals

**2007**  
Village Theatre  
Mainstage Premiere



**2008**  
Chicago  
Debut

**2010**  
Broadway  
Debut

**2011**  
West End  
Debut

**2011**  
National  
Tour Begins



**2013**  
Las Vegas  
Debut

**2019**  
Village Theatre  
Homecoming



# AND VILLAGE THEATRE



for about a month and then to Apollo Theater where it ran for years, becoming the third-longest running show at the venue.

While at the Apollo, a few New York theatre critics gave the show rave reviews. So, with interest generating in New York, talks to move the show to Broadway began. *Million Dollar Quartet* premiered on Broadway on April 11, 2010, complete with the three cast members from Village Theatre's production: Levi Kreis, Rob Lyons, and Lance Guest. In fact, there was a fourth in the background: Corey Kaiser played the role of the bass player at Village Theatre, and also went on with the show to Broadway. The production was nominated for Best Musical, Best Book of a Musical, and won Levi Kreis a Tony Award for Best Featured Actor in a Musical. The show played for 489 performances and 34 previews, before closing in 2011.

**It was nominated for Best Musical, Best Book of a Musical, and won Levi Kreis a Tony Award.**

But that was far from the end. After closing on Broadway, *Million Dollar Quartet* opened on the West End in London in 2011, as well as Off-Broadway, and began a national tour. The show even enjoyed a residency at Harrah's Las Vegas beginning in February of 2013, and closing on December 4, 2016 – The 60th Anniversary of the jam session that inspired the show. A full production has also been featured on Norwegian Cruise Line since 2015.

Twelve years later, we're able to look at the show with fresh excitement. We've brought together a cast that represents some of the best performers who have taken on these roles from around the country, as well as welcoming back Chuck Mead as our music director. We hope you enjoy this rock sensation as it returns home at last.

PHOTO 1: VILLAGE ORIGINALS READING OF *MILLION DOLLAR QUARTET*, 2006, PHOTO BY TOM WYRICK; PHOTO 2: JERRY LEE LEWIS, CARL PERKINS, ELVIS PRESLEY, AND JOHNNY CASH, 1956 (PHOTO BY MICHAEL OCHS); PHOTO 3: ROBB HUNT AND LEVIS KREISS AT THE TONY AWARDS, 2010; PHOTO 4: VILLAGE THEATRE PRODUCTION OF *MILLION DOLLAR QUARTET*, 2007, PHOTO BY JAY KOH.

# Theatre Information

## EMERGENCY EVACUATION PROCEDURES

In the event of an emergency, please wait for an announcement for further instructions. Ushers will be available for assistance.

**FOOD AND DRINK** are not allowed in the theatre. Bottled water is permitted, as well as beverages purchased in lidded souvenir cups at the bar in the lobby.

**SMOKING POLICY** According to state law, smoking is NOT allowed within 25 feet of any door, nor in any part of the theatre.

**EMERGENCY NUMBERS** If you need to be reached during a performance, please leave your exact seat number and the House Manager's number with your service or sitter.

In Issaquah (425) 392-1942 x100

In Everett (425) 257-6368

**YOUNG CHILDREN** Children under four are not permitted in the main theatre space in Issaquah or Everett. In Issaquah, the Francis J. Gaudette Theatre has comfortable, soundproof family rooms for families with young children or those who may wish to speak during the show. Subscribers may exchange into the family rooms when a sitter cannot be found. When bringing children over four into the main theatre, please instruct them on proper theatre behavior. It is helpful to familiarize them with the story and the score in advance.

**ACCESSIBILITY** Wheelchair seating is available. Please advise your ticket seller when purchasing tickets if you require wheelchair seating. American Sign Language (ASL) interpretation is provided during select performances at the Francis J. Gaudette Theatre. Please contact the Box Office for more details.

**LISTENING SYSTEM** The Francis J. Gaudette Theatre and the Everett Performing Arts Center have hearing loop systems which are compatible with most hearing aids. Headsets are available in both venues on a first-come, first-served basis from the House Manager and are free of charge with a valid ID.

**THE SHOW MUST GO ON** Whether it rains, sleets, snows or blows, only a power outage or building destruction will prevent a performance from taking place as scheduled.

**PATRON CONSIDERATIONS** Please arrive on time. Check your tickets for your performance time. Late arrivals are very disruptive to fellow patrons and to the artists onstage. Please give yourself plenty of time to get to the theatre. Patrons arriving late will not be seated until a suitable pause in the performance at the House Manager's discretion.

Please turn off all pagers, cellular phones, and watch alarms before entering the theatre. No text messaging is allowed during the performance.

No photography, video or sound recording of any performance is allowed based on royalty and union agreements.

Be aware that talking, humming, and tapping feet during a performance is also disruptive to the patrons around you. Before the overture begins, please turn off playbill flashlights and unwrap cough drops. In intimate auditoriums like the Francis J. Gaudette Theatre and the Everett Performing Arts Center, even the actors can hear these seemingly small noises. Please use moderation in applying perfume, cologne, or lotion, as many people are allergic to scents. In consideration of your fellow patrons and the actors, please do not leave the performance during the curtain call.

# 30+ Year Subscribers

A special thank you goes out to the following people, who have been Subscribing at Village Theatre for 30 or more years without missing a single season.

Nick & Jeanne Aldrich • Dan & Portia Anderson • Nancy P. Anderson • Nancy Bailey • Mrs. Eva Bair • Charmaine & James Baker • Rebecca & Michael Barr • James & Gladys Baxter • Rick & Dorena Becker • Mrs. Susie Belcher • Larry & Anna Berglind • John & Nelda Brangwin • Douglas & Debbie Brown • Harry & Pauline Buhler • Sandy & Peter S. Burr • Chris & Geri Carlson • E. Anne Carr • Dorothy Carstens-Morris • Curt & Anne Caswell • Jean & Charles Cerar • Jeff & Kathleen Coffler • Mark & Susan Cohn • Michael & Cynthia Coleman • Heidi Cook & Richard Dworkis • Barb & Randy Coplen • Gene & Sandra Craig • Jerry & Mary Anne D'Ambrosio • Karen & Jason Dahners • Daniel & Sharon Desmond • Mario & Linda DiPasquale • Michael & Beverly Doleac • Peter & Patty Dunphy • Carol Lynn & Eugene H. Eads • Marcie Easterlin & Robert Kearns • Jane Emerson • Gary & Linda Feldman • Al & Lana Finegold • Frances Nanette Finelli • Doris H. Gaudette • Mary & Don Gher • Judy Giardrone • Sandy Gierke • Julius & Loretta R. Gommi • Ms. Bonnie Goren • Marcia Green • Larry Greenblatt • Clark & Esther Hall • Paul & Marguerite Harvey • Jim & Alice Haskin • Steven J. Hazlerig • Wayne & Deborah Hill • Rowan & Barbara Hinds • Bobby Holcomb • Randy & Gwen Houser • Kurt & Judy Howeler • Robb & Kathy Hunt • Nancy Huston • David Hutchinson • Joyce L. Johnson • Jayme Johnson • Robert & Diane Jones • Melinda A. Lee • Maximus Leone • Michael & Cheri Levy • Sandra Lindstrom • Nancy Lovell • Terry & April Lundell • Jacqueline & Robert Lee Malone • Bertha Martinez & Peter Llano • Cynthia O. Matin • David & Colleen Mayer • Kathleen & Scott McGuinness • Janine & Scott McKorkle • Nancy & Neil McReynolds • Lynn G. Meyer • Kathleen Mitchell • Linda & William Morrell • Alice & Kenneth Morris • Eric & Georgia Mosher • Herbert & Irene M. Moss • Beth Moursund • Mr. Ron Muffett • Mark Munson • D. Gerald Mutter • Laurie & James P. Needham • Craig Nelsen & Margaret Hall • Ka Nelson • William & Janet Nelson • Mrs. Shirleann Nold • Richard and Jodie Paine • Ms. Valerie L. Parker • Ken & Ann K. Passe • Maggie & Clint Pehrson • Janette Peterson • Christine & Gregory Pickles • Mary Jo & Indru Primlani • Marilyn & Brian Pulk • Donna Raaen • James & Sandi Reed • Mr. & Mrs. Jeff Reinhardsen • Shirley & Howard E. Richmond Jr. • Peter & Naomi Rimbo • Ralph & Jacqueline Risdal • John & Pat Robarge • Joanne A. Roehl • Karyn & David Roseburg • Lori & Frank Roth • Robert Schramke • Janet Shadle • Jean B. Smith • Darlene Staats • Darryl & Kathy I. Stephison • Mr. Phillip Stettler • Stephen & Susan Sullivan • Ms. Suzanne Suther • Carl & Mary Jane Swedberg • Dr. Robert E. Tank • Edward N. Tinoco • Louise M. Tolle • Winston & Darlene Tom • Joanne Tucker • Mr. Eugene H. Usui • Karen & Michael Van Schoiack • Patrick & Janis Walsh • Bob & Kathie Ward • Al & Joan Waters • Laurence & Darlene Weatherly • Jack & Elaine Webber • Larry & Mary Weeks • Ernest & Sherran Whatley • Greg & Cheryl White • Suzanne Wiggins-Ackerson & Gerald Ackerson • Colleen Williams • Jerald & Judy Williams • Stephen & Lynda Wimbush • Fran Wimer • Bob & Carol J. Witty • Cliff and Laura Wood

## Village Theatre Discount Opportunities

### SEE IT AGAIN FOR 1/2 PRICE!

See *Million Dollar Quartet* a second time for half price.

Limit one half-price ticket per paid ticket. Subject to availability. Due to the popularity of this show, "see it again" discount tickets will not be available for weekend matinee performances. Offer may only be redeemed for use by original patron, and proof of purchase may be requested. Discount off the single ticket price. Offer not good on previously purchased tickets or in combination with any other offer.

Box Office Issaquah:  
(425) 392-2202  
Box Office Everett:  
(425) 257-8600

DISCOUNTS ARE ONLY AVAILABLE THROUGH THE BOX OFFICE AND NOT APPLICABLE TO ONLINE ORDERS.

### SHARE THE EXCITEMENT AND SAVE... WITH A GROUP DISCOUNT!

Does your company need to boost morale? Want a group night on the town? Entertaining clients? Let Village Theatre provide the key to your success! Groups save up to 20% off the single ticket price. All you need is a group of 10 or more for single ticket purchases or Season Tickets. Email [groupsales@villagetheatre.org](mailto:groupsales@villagetheatre.org) or visit our website for details. [villagetheatre.org/group\\_sales.php](http://villagetheatre.org/group_sales.php)

### RUSH TICKETS

To take advantage of these discounts, arrive at the Box Office one hour before the show begins to purchase your tickets. Tickets will be sold on a first-come, first-serve basis, subject to availability. Does not apply to season tickets.

**Section B Rush:** \$20 tickets for anyone, for any Mainstage show! Limit two tickets for each person present at time of purchase.

**Student/Military Rush:** 50% off ticket price. Good for one ticket for each person who has a military or student ID.

**Industry Rush:** 50% off ticket price for members of the professional Seattle theatre community. Limit one ticket per person with proof of employment.



# Sponsor Spotlights



As a cultural funding agency for King County, Washington, 4Culture works to make our region vibrant. We strive to ensure access to cultural experiences for all, from museums to orchestras to historical sites to dance troupes to lectures to Village Theatre's own upcoming show, *Million Dollar Quartet*. Thank you for supporting local artists and please enjoy the show!



Engineered Sports, a regional leader in Human Performance and Sports Physical Therapy, is honored to partner with Village Theatre, another regional leader and recognized organization for excellence in Family Theatre. "At Engineered Sports, we believe that Physical Therapy is an art that has the power to change lives," said Lance Miller, owner of Engineered Sports. "So, it felt natural for us to team up with a company that also changes lives by spreading positive values through art in our community. This powerful partnership allows us to continue our mission of upgrading lives and providing solutions to help people take control of their health whether on the field, in the boardroom, or on the stage."



With the motto "Teamwork to Take You Forward", MarsJewett Financial Group has faithfully served the financial needs of our clients for over 40 years. We come alongside successful families including our extended family members and personal friends to navigate life's financial complexities during inevitable life-transitions. We develop long lasting relationships of trust, based upon integrity and dedication to help enhance well-being and quality of life. We are delighted to support Village Theatre and our community with excellent productions, like *Million Dollar Quartet*.



Locally owned and operated, Redmond's Bar and Grill is nestled in the heart of historic downtown Redmond. Our menu is built from fresh, local and organic ingredients allowing us to serve great quality food. Redmond's Bar and Grill is a proud supporter of the local arts and our community. We delight in supporting Village Theatre by providing catering for many theatre events each year. Visit Redmond's Bar and Grill for date night or weekend brunch. Planning your next gathering? Feel free to contact Redmond's Catering to help create your next event. Cheers!



*The Seattle Times* is proud to partner with Village Theatre, whose productions are one of the bright stars in the Pacific Northwest's arts firmament, bringing joy to young and old alike on stages in Issaquah and Everett. Supporting local arts has always been part of our mission at *The Seattle Times*. We do that both through sponsorships such as this one and through our coverage of artists, arts events, and programs around the region. We consider it a special responsibility—and privilege—to connect our readers with the performances, exhibits, films, and books that will excite and inspire them. These days, you can find our writers' expertise not only in the pages of the newspaper, but on your desktop, tablet, or mobile at [seattletimes.com](http://seattletimes.com). As *The Seattle Times* enters its 123rd year, this is just one of the ways we strive to enrich our community through quality, independent journalism. We hope you enjoy this wonderful Season of theatre.

# Village Theatre

## MISSION STATEMENT

To be a regionally recognized and nationally influential center of excellence in family theatre:

- To promote a season of top-quality productions
- To commission and produce new musicals that achieve national exposure
- To train young people in theatre skills for career opportunities and enriched lives
- To develop a broad-based appreciation for live theatre
- To promote positive values through art

## THEATRE INFORMATION



### Issaquah

Village Theatre  
Francis J. Gaudette Theatre  
303 Front Street North  
Issaquah, WA 98027-2917

Box Office: (425) 392-2202  
Administration: (425) 392-1942  
Fax: (425) 391-3242  
Toll Free: (866) 688-8899  
TTY Access: (800) 833-4384



### Everett

Village Theatre  
Everett Performing Arts Center  
2710 Wetmore Avenue  
Everett, WA 98201-3552

Box Office: (425) 257-8600  
Administration: (425) 257-6363  
Fax: (425) 257-6393  
Toll Free: (888) 257-3722  
TTY Access: (800) 833-4384

EPAC Rental Inquiries: (425) 257-6360

[VillageTheatre.org](http://VillageTheatre.org)

# Individual Donors

Village Theatre would like to thank our generous individual Annual Fund donors and those who supported the programs served by our Annual Fund: Mainstage, Village Originals, and Youth Education. Your contributions make our season possible. Thank you! Names listed reflect gifts made between **April 1, 2018–April 1, 2019**. Please note: This list does not include donations made for Village Originals Memberships.

## Individual Sponsors

\$50,000 and up

The Emans Family  
Joanne Herber & the late  
Gerald Herber  
Anonymous (2)

## Starring Sponsors

\$25,000 to \$49,999

Bob & Ann Christensen  
Doris Gaudette  
Heather & Doug Goff  
Steven J. Hazlerig  
Twyla & Tom Lucas  
Mary Pigott  
Alison & Doug Suttles  
Bruce & Peggy Wanta  
Joan & the late Craig M. Watjen  
Anonymous (2)

## Underwriting Partners

\$15,000 to \$24,999

Dr. Richard & Bonnie Cavell  
Jeff & Kathi Coffler  
Robert & Janine Knopson  
Gary & Marilyn Knepkens  
Kathy & Bob Lovejoy  
Lisa & David McQueen  
William & Kristen McSherry

## Directing Partners

\$7,500 to \$14,999

Dan & Portia Anderson  
Richard Baker  
Saundra Cope & Walt Gillette  
Dennis & Deborah DeYoung  
Chico & Nellie Diaz  
Aileen & Viggo Forde  
Pam Foster & Liz Austin Fund  
Diann & Gary Hitzel  
Kim & Stacy Johnson  
John & Lynnda Kilpatrick  
Steve & Carol Klein  
Bobbi Kotula  
Eric & Erin LaFrance  
Shawn Magraw  
Valorie & Larry Osterman  
Maggie & Clint Pehrson  
William & Brittany Rall  
Phyllis Schaeffer  
John & Dorcy Seethoff  
Chris & Kristina Shaffer  
Bradley & Rebecca Taylor  
William & Marilyn Vaughn  
Jerry & Suzanne Wiggins-Ackerson  
Brian R. Yorkey  
Marcia & Klaus Zech  
Anonymous (2)

## Producing Partners

\$5,000 to \$7,499

Michael Bauer  
John & Merrill Berg  
Jim & Marie Borgman  
Deborah Buccola  
Chee & Christine Chew  
Steve Connelly & Pam Nordquist  
Lisa & Kevin Conner  
Kerry Davis & Brier Begnaud  
Buz & Sandy de Cillia  
Richard & Mary Ann Flanders  
Paul Fortner Family  
Michael & Jennifer Godsey  
Lissa & John Griffith  
Barbara Howell  
Robb & Kathy Hunt  
Debbie Killinger  
Gwendolyn King  
Jeff & Barbara McCashland  
Lynn G. Meyer  
Robert & Claudia Nelson  
Debbie & Pat Ostrander  
Mikel Poulsen  
Lydia Rapidah & Bryce Johnson  
Ed & Bunny Renouard  
Karl Ritau & Taletta Wibmer  
Tom & Cathy Saxton  
Idamae Schack  
In Memory of Denise A. Schramke  
Jim & Sue Selis  
Judith & Ben Simmons  
Kristina & Ryan Steffen

Mary Anne Strong  
Dr. Michael & Peggy Swistak  
Louise M. Tolle  
Jay & Suzy Wakefield  
Tom & Connie Walsh  
Allen & Janice Wiesen  
Nathan Wilson  
Anonymous (2)

## Ensemble Partners

\$2,500 to \$4,999

Kyle & Carol Anderson  
Loch Anderson & Allyn Perkins  
Fred & Patricia Auch  
The Bailey Family  
Bruce Beck & Ralph Johnson  
Chad Bentsen &  
Kristen Allen-Bentsen  
Alex & Heather Berry  
Norm & Joyce Bottenberg  
Alan & June Brockmeier  
Sandra B. Chivers  
Aaron & N ria Coe  
Mark & Linda D'Amato  
Rita M. Daubenspeck  
Jacqueline De Leon-Estes &  
Chris Estes  
Greg & Alicia Erickson  
James & Krista Ferguson  
Elsa & Joe Fleck  
Leigh & Matt Flor  
Dan & Kim Foster  
Amy Gibart

Rob & Crystal Griffin  
Tom & Carol Hogan  
Steve Huebner  
Sandy L. Lambert  
Ken & Darlene Lowe  
Gerald & Patricia Magnani  
Joe & Mio Martinez  
Beth & Kevin Meidinger  
Beth Moursund  
Patsy Nelson  
Jim & Denise Ohls  
Michael Ouhl  
Gregg & Shelley Percich  
K. Linnea Peterson & John Corman  
Matt & Wendy Poischbeg  
Frank Rasmussen  
Rick & Sharon Reuter  
Kathryn Sand & Curtis Urben  
Tom & Marion Skalley  
Galen & Hollie Smith  
Richal & Karen Smith  
Frank Stilwagner & Kurt Dery  
Linda & Dean Strong  
Doug Taylor & Bob Ferguson  
Clint E. Thayer & Douglas Peterson  
Ann & Greg Thornton  
Anne & Derek Watanabe  
The Williams Family  
Tony & Cathy Wise  
John & Marta Wohlfarth  
Judy Yu & Clay Hall  
Anonymous (1)

## Supporting Partners \$1,000 to \$2,499

Megan & Seth Adams • Phyllis & Donald Adams • Judith P. Allen • Sharon R. Allen  
• Michael Amend & Jeff Ashley • Amento Family • Eric & Susan Amsberry • Don &  
Becky Anderson • Richard & Marianne Anderson • Thomas N. & Christina E. Anderson  
• Michael J. Angotti • Bob & Clodagh Ash • Jason & Amy Atherton • Nancy & George  
Austin • Jim & Charmaine Baker • Michael R. Barclay • The Barr Family • Dan &  
Judy Bartelheimer • David & Barbara Beatty • James & DiAnne Beneteau • Anne &  
Michael Bentley • Julia Bicknell • Margie & Charlie Bicknell • Nancy & Keith Birdwell  
• Lee L. Boeckstiegel • Catherine K. Boshaw • Jodi & Jay Bowlden • Michael & Ingrid  
Boyle • Marvin & Lisa Brashem • Terry & Mark Brashem • Bratton Family • Zion &  
Claire Brewer • Audrey Bridgman • Doug & Debbie Brown • Richard Bryant • Pear  
Bussaban • Paula & Paul Butzi • Clifford & Mary Ann Cameron • Duane & Anita  
Campbell • Kathleen Campbell • Dallas & Susan Carleton • Christopher & Geraldine  
Carlson • Jacky-Vy Chau • Lisa Church • Dave & Donna Clark • Robert & Janet Coe  
• Michael & Cynthia Coleman • Gary & Consuelo Corbett • The Cowan Family • Tom  
& Carol Curtis • Gretchen & Mark Davey • Ron DeChene & Robert Hovden • Bill &  
Patty DeGroot • Marcia & Mike Delabarre • Carol & Laurent Delsuc • Steve & Kathy  
Dennis • David & Patricia Dierst • Darrel & Nancy Dochow • John & Sherry Douceur  
• Sherrill Dryden & Dennis Griffiths • Audrey Ellingsen • Glenn & Micki Engel • Dr.  
Virginia Eschbach • John Fairchild Family • Vanessa Feliberti & Jesus Bautista • Bill &  
Katie Finley • Andy R. Fisher & Deb Wright • Laurie & Robert Flemer • Mac & Charlene  
Fletcher • Stephen D. Forman & Sarah L. Hayden • Julia Bisbee Franz • Wayne &  
Bev Freese • Deborah Freng & Joseph Decuir • Ray & Niki Gagner • Susan Gardner  
• Marilla L. Gemmer • Steve & Hina Giese • Faye & Richard Gillett • Mike & Allison  
Glover • Karen & Dan Gordon • Lindell Graham • Dick & Jan Gram • Tom Greenwood  
& Shannon Hamrick • Jim & Patty Groves • Doug & Carol Hadley • Norma Haines •  
The Halgren Family • Monica & Lawrence Hall • Bob Hallberg & Diane Southworth •  
Deb, Tod, Jasmine & Eliana Harrick • Ila M. Hemm • Mary Frances Hill • Dr. Wayne &  
Deborah Hill • Bruce & Emily Howard • Brandi & Jerry Huang • Joyce Jackson • Robert  
& Diane Jandl • Roy & Geri Johnson • Lynn Juniel & Jason Weil • Michael & Priscilla  
Kaufmann • Pauline Kennard • Barbara & Jim Kenney • Barbara & Jeffrey King •

Friends of Jordan King • Eric & Nancy Kittleson • Dale & Richard Kleinknecht • Jill &  
Charlie Klinge • Jim & Sherry Ladd • Ander Larson • Dawn Lee • Mr. & Mrs. Rod  
Leland • Michael & Cheri Levy • Charlotte Lin & Robert Porter • Stuart & Erin Linscott  
• E & M Lockard • Tim & Nicole Longpre • Terry Lundeen • Louis & Joegil Lundquist  
• David Markwald • Michele Martin • Lizz Maunz & Art Simpson • David & Colleen  
Mayer • Kevin & Charlie McCandlish • Jennifer McCoy & Jason King • Harry & Anne  
McGee • M. Jon & Val McKenzie • Thelma & Doug McTavish • Cristal & Kirk Meidinger  
• Lorraine & Barry Mercer • Leslie Merta • Nancy & Brad Meyers • Lee & Samantha  
Meyrick • Briana & Brandon Miles • Don & Maxine Miller • The Miller Family • Arnie &  
Katie Mondloch & Family • Sterling Morris • Eric & Georgia Mosher • Theresa & Scott  
Mosier • The Mundy Family • Amy & Carl Murray • Dwayne Myers & Pam Oyanagi •  
Jill & Kurt Nellis • Shelley Noble & Robert Kilian • Tim & Lisa Nunn • Dr. & Mrs. O'Brien  
• Mrs. McLitta Odessa Olson • Stan & Sharon Parry • G. Ronald & Deborah Payne  
• Leslie Peng • Margie & Wayne Pietz • Leonard, Wendy, & Marly Polidori • Kelly &  
Christi Price • Margo & Roger Putnam • Brian & Nancy Quint • Leah Rei • Linda Reid  
• Lorena Reyes • Scott & Holly Rhodes • Jan Roach • Mary Rollins & Eleanor Lund •  
Onti & Morris Rosen • Robert & Shannon Russell • Scott & Danielle Ruthfield • John  
Sager • Chris Sailer • Tom & Kim Sawers • Jim, Carmen & Lizzy Scardelis • William &  
Gailor Schmidt • Linda & Patrik Schnell • Tim & Debbie Seeley • Albert J. & Claudia  
Serpas • Monika Shekhar & Raj Jain • Sue Short • Tim & Katie Short • John & Laura  
Smiley • Mr. & Mrs. Bruce C. Smith • Peggy & Greg Smith • William Smith • Travis &  
Amy Sparks • Robert & Marilyn Springgay • Darlene Staats • Stalcup Family Giving  
Fund • James & Barbara Stapper • Kim L. Stocking • Barry & Amy Stoddard • Dan  
Sweeney • Sheila Swenson • George & Marie Taylor • Robert & Wilma Taylor • Edward  
Thomas • Gifford Thomas • Tim Timidaiski • Trudy Tobiason • Barb & Larry Traaen  
• Jerry & Faye Truskowski • Edith & David Tully • Didrik & Mary Kay Voss • Marty &  
Nancy Waiss • Donna Walsh • Wanagel-Rojas Family • Ty & Patty Wernet • Clay & Hap  
Wertheimer • Sue & Michael Wilenzick • Jeremie M. Wilkins • Marilyn Wilshin • Lynda  
& Steve Wimbush • Andrew & Barbara Wold • Fred & Jean Wood • Joella Yoder •  
Nathan Young • Anonymous (4)



# In Honor & Memory of....

**Village Theatre gratefully acknowledges the following donors who have remembered friends, families and loved ones** with generous donations in their honor or memory. The donations were received between **December 1, 2018–April 1, 2019**.

In Memory of Loretta Kotula Bushner  
Anonymous

In Memory of Sister Louise Dumont  
Sister Kathleen Pruitt

In Honor of Sheila Reed  
Aggie Sera

In Memory of Carolyn Wood  
Helene Fornia

In Memory of Beth L. Cornwall  
Anonymous

In Memory of Noel Ann Petitjean  
Lanny Petitjean

In Memory of Denise A. Schramke  
Bob Schramke

We sincerely apologize for any names that we may have misspelled or inadvertently omitted from our donor list. For corrections, please contact our Donor Services & Database Specialist at (425) 392-1942 x120 or sshort@villagetheatre.org.

## Corporate, Foundation, and Government Donors

**Village Theatre gratefully acknowledges the following corporations, foundations, and government agencies** that contributed to our annual fund between **April 1, 2018 to April 1, 2019**. Their support of Village Theatre has helped us maintain our commitment to artistic excellence.

### \$50,000 and up

4Culture  
American On Line Giving  
Foundation, Inc. / Benevity  
Community Impact Fund  
Apex Foundation  
ArtsFund  
The Boeing Company  
The Boeing Company Gift  
Matching Program  
Goldman Sachs Philanthropy  
Fund  
Issaquah Arts Commission  
Microsoft Corporation  
Matching Gifts Program  
M J Murdock Charitable Trust  
The Seattle Times \*

### \$25,000 to \$49,999

AgencyOne Realty  
City of Everett Lodging &  
Tax Fund  
Fidelity Charitable Gift Fund  
The Issaquah Reporter \*  
Lombardi's Italian  
Restaurants +  
National Endowment for  
the Arts  
Northwest Theatre Press +  
The Shubert Foundation  
Snohomish County Hotel-Motel  
Tax Fund  
Warrick Family Trust

### \$10,000 to \$24,999

John Brooks Williams & John H.  
Bauer Endowment for Theatre  
The Daily Herald \*  
DCG ONE +  
Encore +  
FINS Bistro +  
Heritage Bank  
MarsJewett Financial Group Inc

The Norcliffe Foundation  
Redmonds Bar & Grill +  
Rowley Properties  
Schwab Charitable  
Sea-Lect Plastics Corporation +  
Seattle Foundation giveBIG  
Seattle Foundation Donor  
Advised Funds  
Shelter Holdings, LLC  
Spectrum Controls, Inc.  
Tulalip Tribes Charitable  
Contributions  
United Airlines +  
U.S. Bank Foundation  
WildFin American Grill +  
Anonymous (1)

### \$5,000 to \$9,999

425 Magazine \*  
Bellevue Arts Commission  
Bluewater Distilling +  
CDK Global Matching Gift Program  
Community Foundation of Snohomish  
County  
EBJ Proliance Surgeons  
Engineered Sports +  
Everett Cultural Commission  
Greater Kansas City Community Foundation  
IBM Corporation Matching Grants Program  
Juniper Capital  
Klein Honda  
National Philanthropic Trust UBS Donor  
Advised Fund  
Nysether Families Funds held at the  
Community Foundation  
Peoples Bank  
Saltchuk Resources, Inc.  
Sanmar & Lake Washington Partners +  
Savage Color +  
seattlepi.com \*  
Thrivent Financial Gift Match  
Wells Fargo Foundation  
Wells Fargo Private Bank & Wells Fargo  
Middle Market Banking  
Jeff & Liesl Wilke - The Wilke Family  
Foundation  
Anonymous (1)

### \$2,500 to \$4,999

90.7 KSER \*  
Aegis Living of Issaquah  
Christian Manley Orthodontics  
Coastal Community Bank  
Epulo Bistro +  
The Ex Anima Fund  
First Interstate Bank  
Frederick Stearns Foundation  
Krawbar\*  
Narrative Coffee +  
Nordstrom Employee Matching Gifts  
Program  
Rotary Club of Issaquah  
Lester & Bernice Smith Foundation  
Start It! Foundation  
Thrivent Financial Foundation  
Tutta Bella Neapolitan Pizza +  
The U.S. Charitable Gift Trust  
Warren Hill Home Team: REMAX Integrity  
Washington State Arts Commission  
Washington Trust Bank  
Windermere Foundation  
Anonymous (1)

### \$1,000 to \$2,499

Abbott's  
Alaska Airlines Employee Gift Matching  
Program  
Amazon Smile Foundation  
Anderson Hunter Law Firm  
Aon Risk Solutions | Aon Specialty |  
Global Marine  
Ayco Charitable Foundation  
Bungie Foundation  
Peter F. Donnelly Merit Fund  
Everett Tire & Automotive  
Facebook Fundraisers  
Gamut360  
Grass CPA & Associates PS  
Harbour Pointe Orthodontics  
Henry M. Jackson Foundation  
Humble Bee Books - Matt & Sandy Bench  
IRG Physical & Hand Therapy  
Kulits Orthodontics  
John R. Liu - Eastside Pediatric Dental  
Group  
Petite Sweet Bakery & Cafe +  
Scuttlebutt Brewing Company +  
Sold by Rob Griffin Real Estate  
The Studio in Issaquah  
Temcov Foundation  
T-Mobile Gift Matching Program  
United Way King County Donor Advised  
Funds

U.S. Bank Foundation Employee Matching  
Gift Program  
Vanguard Charitable Donor Advised Fund  
Anonymous (2)

### \$500 to \$999

Craft Architects PLLC  
Emerald Heights  
Expedia Matching Gift Program  
GE Foundaton Matching Gifts Program  
Give with Liberty Employee Donations  
The Grange  
Marlow's Fine Jewelry  
Morgan Stanley Global Impact Funding  
Trust  
Pacific Learning Academy  
Pledgling Foundation  
Rao & Satya Remala Foundation  
The Seatons' Carpentry Shop LLC  
Thrivent Choice  
Anonymous (2)

### \$250 to \$499

Actors' Equity Foundation Inc  
American Endowment Foundation  
Berkeley Playhouse - Elizabeth McKoy  
Goldman Sachs Matching Gift Program  
Kiwanis Club of Issaquah Valley  
William M. Zingarelli, P.S. Attorney At Law  
Anonymous (2)

### \$100 to \$249

Bellevue Women's Club  
Bridge Animal Referral Ctr  
Chaison Orthodontics  
Coca Cola Refreshments Matching Gifts  
Corvette Marque Club of Seattle  
Eli Lilly & Co Foundation Matching Gifts  
Program  
EXXON Cultural Gift Matching  
MUFJ Union Bank Gift Match  
National Christian Foundation Northwest  
Salesforce.org  
Shell Oil Company Foundation Matching  
Gifts Program

### Up to \$99

The Apex Foundation Matching Gift  
Program  
Crown Property Services Inc  
Ligature Creative  
Reid Shockey - Shockey/Brent, Inc.

+ Denotes a partial or full in-kind donation  
\* Denotes a media sponsorship

# BRAVO!

RECEIVING STANDING OVATIONS & RAVE REVIEWS FROM PATIENTS

- Sports Medicine
- Foot & Ankle
- Spine Surgery
- Joint Replacement
- Hand & Wrist
- Surgery Center

BOARD CERTIFIED ORTHOPEDIC SURGEONS

(425) 339-2433  
www.ebjproliancesurgeons.com



**EBJ** PROLIANCE SURGEONS



Premier Retirement Living  
eraliving.com



## MAKE ROOM IN YOUR LIFE *For More*

- ✓ Lasting Connections
- ✓ Enriching Hobbies
- ✓ Intellectual Pursuits

At UWRA-affiliated University House Issaquah, active seniors are making room for more stimulating community and memorable moments in their retirement years.

Schedule a visit or learn more  
(425) 200-0331 | [eraliving.com](http://eraliving.com)



Ask about special benefits for **UWRA** members.

University of Washington Retirement Association

## Business, meet box office.

Encore connects your business to arts patrons wherever they are.



To learn what Encore can do for your business, visit [encoremediagroup.com](http://encoremediagroup.com).

Village Theatre  
**KIDSTAGE**  
SKILLS FOR THEATRE  
SKILLS FOR LIFE

# SUMMER CAMPS

GRADE PRE-K - AGE 20



**10% DISCOUNT OFFER FOR FAMILIES REGISTERING FOR MULTIPLE CAMPS**

REGISTRATION:  
(425) 740-5035  
[VillageKIDSTAGE.org](http://VillageKIDSTAGE.org)

# SUPPORT THE NEXT *MILLION DOLLAR QUARTET!* BECOME A VILLAGE ORIGINALS MEMBER TODAY

## VILLAGE ORIGINALS IS

- FUTURE MAINSTAGE PREMIERES
- BETA SERIES [ Don't miss *Hart Island*,  
on stage June 7 – 16, 2019 ]
- THE FESTIVAL OF NEW MUSICALS [ Save the Date!  
August 9 – 11, 2019 ]
- WRITER RESIDENCIES

## WHERE ARE THEY NOW?

The Village Originals program has fostered many amazing musicals that go on to Broadway and beyond. Here are just a few of their success stories:

### *Next to Normal*

2002 Village Originals Reading  
2005 Village Originals workshop production  
2009 Opened on Broadway

### *Million Dollar Quartet*

2006 Festival of New Musicals  
2007 Village Theatre World Premiere  
2010 Opened on Broadway

### *It Shoulda Been You*

2010 Festival of New Musicals  
2012 Village Theatre Mainstage Production  
2015 Opened on Broadway

### *Lizzie*

2011 Festival of New Musicals  
2012 VO Developmental Production  
2019 Upcoming Off-Broadway Run

Village Theatre's Production of  
*Million Dollar Quartet*, 2007

## NEW MUSICALS START HERE

**ONLY VO MEMBERS** get exclusive admission to **The Festival of New Musicals** in August, and receive other benefits such as free or discounted Beta Series tickets and invitations to Members-only events.

**TO JOIN**, visit [VillageOriginals.org](http://VillageOriginals.org) or call (425) 392-1942 x151

Village Theatre  
#villageoriginals

# DONATE TODAY

Mail to: Village Theatre  
303 Front Street N., Issaquah, WA 98027

**YES,** I/we wish to contribute

\$ \_\_\_\_\_ to benefit Village Theatre

\_\_\_\_\_ Date of Gift

\_\_\_\_\_ Name(s)

\_\_\_\_\_ Address

\_\_\_\_\_ City/State/Zip

\_\_\_\_\_ Day Phone

\_\_\_\_\_ Evening Phone

\_\_\_\_\_ Email

\_\_\_\_\_ Name as it should appear in Village Theatre programs

I wish to be an anonymous donor.

I wish to waive my benefits.

## PAYMENT OPTIONS

Enclosed is a check payable to Village Theatre.

Please charge my credit card in full.

Please charge my credit card:

Monthly  Quarterly  Bi-Annually

Other \_\_\_\_\_

I would like to make a gift of stock.

(Please notify us so we can allocate your gift to your account.)

## STOCK TRANSFER

I have instructed my broker to transfer \_\_\_\_\_ shares of \_\_\_\_\_ stock to Village Theatre's account at Fidelity Investments DTC # 0226, Account # Z72 - 303518, VILLAGE THEATRE, Attn: Robb Hunt.

## ADDITIONAL GIVING OPTIONS

My company \_\_\_\_\_ will match my gift.

My company will match volunteer hours.

\_\_\_\_\_ Name of company

Matching form enclosed.

Matching will be done online.

Please contact me about making a charitable bequest in my will.

I have included Village Theatre in my will.

## CREDIT CARD INFORMATION

Visa  MasterCard  American Express

\_\_\_\_\_ Card Number

\_\_\_\_\_ Name on card (please print)

\_\_\_\_\_ Expiration Date

\_\_\_\_\_ Signature

Village Theatre, located in Issaquah and Everett, is registered with Washington State's Charities Program as required by law. Additional information is available at 800-332-4483 and sos.wa.gov/charities.

Inspire MAINSTAGE

Create VILLAGE ORIGINALS

Educate YOUTH EDUCATION & OUTREACH

Village Theatre is recognized as one of the nation's premier, fully-producing theatres and a cultural haven for hundreds of thousands of people because of the generosity of our donors. Donor support gives us the tools we need to **INSPIRE** audiences with our Broadway-worthy Mainstage productions, **CREATE** a platform for new musicals through our Village Originals program, and **EDUCATE** through our Youth Education and Outreach programs.

## How to Support VILLAGE THEATRE

### ONLINE

You can easily give online through our secure website: [VillageTheatre.org/donate](http://VillageTheatre.org/donate). Please note: Your donation profile is linked to your household's primary email address, which is used as a unique identifier, linking your donation to your patron account.

### BY MAIL

Payments can be made by credit card or by personal check payable to Village Theatre. Please mail to Village Theatre, PO Box 2350, Issaquah, WA 98027.

### STOCK TRANSFERS

A gift of stock is a simple and excellent way to donate. Please consult with your investment advisor, inform them of our investment account number on the donation form, and send the form or call (425) 392-1942 x112 so that we may allocate your gift to your account.

### EMPLOYER MATCHING GIFTS

Take advantage of your company's Matching Gifts program, where your employer may match your donation to Village Theatre. Your donation can be **double matched** if each household's employers have a gift matching program. A list of current participating companies is on our website under "Other Ways to Give." If you do not see your employer on our list, please contact your benefits or human resources office for details. (Matching Gifts also count toward your total for benefit levels, entitling you to additional, exclusive donor advantages.)

### EMPLOYER MATCHING VOLUNTEER HOURS

Many companies also match volunteer hours with monetary gifts to nonprofits. There are numerous events at Village Theatre where you may volunteer and your volunteer hours can turn into financial support for Village Theatre. Again, please contact your employer's benefits or human resources office for details.

### LEAVE A LEGACY

Consider including a gift to Village Theatre in your estate plans (will, trust, or other planning instrument) and join the Village Guardians Legacy Society. Our legacy and estate planning advisor would be delighted to speak with you and/or your advisor about your goals for this generous gift, and explore what tax benefits you may be eligible for during your lifetime. Please call (425) 392-1942 x208 to let us know your intentions.

### ENDOWMENT

Give a gift that keeps on giving by designating your gift for Village Theatre's Endowment. Donations to the Endowment are properly invested for continued growth and each year up to 5% of its earnings are used to support Village Theatre operations while the principle gift remains intact. Whether an outright gift to the Endowment or a gift that requires a little more planning, our Certified Specialist in Planned Giving would be delighted to speak with you. Please call (425) 392-1942 x208.

## FOR QUESTIONS, PLEASE CONTACT

[Giving@VillageTheatre.org](mailto:Giving@VillageTheatre.org), call (425) 392-1942 x151, or go to our website [VillageTheatre.org/donate](http://VillageTheatre.org/donate)

CLIP & MAIL



# Planned Giving

The generous patrons who have chosen to remember Village Theatre in their estate plans and through various planned gifts are a special group of donors referred to as “**Village Guardians.**” They are in essence the defenders, protectors, and keepers of our artform. They are visionaries whose philanthropy is ensuring a bright future ahead for our mission. We are thrilled to honor those who have looked ahead to the needs of future generations by joining the **Village Guardian Legacy Society:**

- |  |                                     |
|--|-------------------------------------|
| Richard & Marianne Anderson                  | Michael & Cheri Levy                |
| Michael Bauer                                | The Estate of Patricia Ann Marsh    |
| Alex & Heather Berry                         | Lynn G. Meyer                       |
| L. Renee Briggs                              | The Estate of Michael Mitchell      |
| The Estates of Robert W. & Lois H. Catterall | Maggie & Clint Pehrson              |
| Bob & Ann Christensen                        | Sherry & Bill Picatti               |
| Susan Gardner                                | Gustav Raaum                        |
| Mrs. T. A. Gildersleve                       | The Estate of Eugene H. Radach      |
| Otis & Sharon Gillaspie                      | John Sager                          |
| Heather & Doug Goff                          | Christine Shuken                    |
| The Estate of Stanley T. Harvey              | Darlene Staats                      |
| Steven J. Hazlerig                           | Barb & Larry Traaen                 |
| Joanne Herber and the late Gerald Herber     | Tom & Connie Walsh                  |
| In Memory of Julie Ann Hovind                | Herbert H. Warrick Family Trust     |
| Bruce & Emily Howard                         | The Estate of Dr. Albert Watenpaugh |
| Robb & Kathy Hunt                            | The Estate of Ruth Sutton Waters    |
| Karen & Jim Ilika                            | Mildred Windmiller                  |
| Roy & Geri Johnson                           | Diane Woltz                         |
| D. Edward & Louise Jones                     | Joella Yoder                        |
| Steve & Carol Klein                          | Anonymous (3)                       |
| Bobbi Kotula                                 |                                     |
| Betty S. Kramer                              |                                     |

## Endowment

In February of 2018, Village Theatre began the quiet phase of an endowment fund campaign (a charitable investment account that generates a yearly income) to strengthen our creative capacity and nourish our programs. It's an honor to recognize our fund holders and all the supporters who have started with us on this incredible journey:

### General Endowment

- Bob & Ann Christensen
- Cummins Business Services, in Honor of Bob Christenson's Retirement
- Bobbi Kotula, Loretta Bushner's Daughter
- Twyla & Tom Lucas
- The Estate of Patricia Ann Marsh
- John & Dorcy Seethoff

### Mainstage Endowment

- Steve Tomkins Fund for Artistic Excellence\*
- Jandi Family Fund\*

### Youth Education Endowment

- Klein Family Fund\*

### Village Originals Endowment

- Robb & Kathy Hunt Endowment for New Musicals\*

\* Named funds within each Endowment category

## In-kind Donors

Village Theatre would like to acknowledge the following individuals for their generous in-kind donations in support of our programs and productions:

- |                             |                        |
|-----------------------------|------------------------|
| Kimberly Crowley            | Sheri Ogilvie          |
| Ruth Ellen Bean             | Kent & Kelley Phillips |
| Betty R. Carter             | Joyce Rawley           |
| Bob & Ann Christensen       | Eugenia M. Rooth       |
| Eric Conner                 | Dan Smith              |
| Pauline Ellett              | Frank S. Stilwagner    |
| Mr. & Mrs. William Goodrick | Ann Elise Thorpe       |
| Twyla & Tom Lucas           | Susan Voorhees         |
| Anne Lutrick                | Bruce & Peggy Wanta    |
| Carrie & Larry Myers        | Ty & Patty Wernet      |

EXPERIENCE THE *Stories.* SUPPORT THE *Journey*



As a supporter of Village Theatre, you make productions like *The Noteworthy Life of Howard Barnes* and *Million Dollar Quartet* come to life and allow our new works and youth education programs to thrive.

By making a gift today, you will be contributing to Village Theatre's mission to be a regionally recognized and nationally influential center of excellence.

Gifts received before July 31<sup>st</sup> will also receive one-of-a-kind donor benefits, during the upcoming Season.

*Your donation makes everything we do possible!*

**MAKE YOUR GIFT TODAY AT [VILLAGETHEATRE.ORG/DONATE](http://VILLAGETHEATRE.ORG/DONATE)**



Photos of Michael Mitchell; his children Dave, Tom & Sally; and their mother Kristen Towberman

## A Special legacy story

Michael Mitchell was one of Village Theatre's earliest and most dedicated supporters, and we are delighted to honor his memory as we bring one of his favorite productions, *Million Dollar Quartet*, back to our Mainstage. Mike loved reading playbills from cover to cover scanning for familiar names and Theatre news, and he also loved seeing his children thrive in KIDSTAGE; they fondly recall long days in rehearsal and summer trips to Ashland to see the Shakespeare Festival with theatre friends. He had a strong desire to leave a legacy for a place that brought so much joy to his life.

We are beyond grateful for Mike's vision and legacy of goodness that will help preserve a community treasure as we continue to impact the lives of others through the making of amazing art. We are proud to honor the late Michael Mitchell and all of our Village Guardians for their vision and commitment to preserving great musical theatre with their generous gifts. For more information on how to leave a legacy gift (a percentage of your will, IRA, or life insurance policy goes a long way), please contact Janell Johnson at (425) 392-1942 x208 or [jjohnson@villagetheatre.org](mailto:jjohnson@villagetheatre.org).



**ROBB HUNT** (*Executive Producer*) helped found Village Theatre in 1979 and has been involved as producer for the theatre ever since. Robb was an avid performer for many years with experience as

a principal actor and dancer in several Puget Sound theatre companies. With a background in business, Robb was a strong hand as a consultant in the field of Arts Management; several of his clients included The 5th Avenue, The Metropolitan Museum of Art, Seattle Repertory Theatre, Seattle Symphony, The Museum of Flight, The Carnegie, and San Francisco Museum of Modern Art. Robb is dedicated to commissioning and developing musicals and has been the driving force in the inclusion of new musicals in Village Theatre programming. He has collaborated on the creation of productions such as *Eleanor*, *Next to Normal*, *The Ark*, and *Making Tracks*. Village Theatre has become an active member of the National Alliance for Musical Theatre, and Robb has served on its New Works committee and was on the Board of Directors. He has served on the Board of Theatre Puget Sound and as a peer panelist and evaluator for the National Endowment for the Arts (NEA).



**JERRY DIXON** (*Artistic Director*). For Village Theatre, has directed *The Full Monty*, *Show Boat*, and premieres of *Take Me America*, *Great Wall*, and *A Proper Place*. Dixon has developed, and directed

world premiere productions of *Ferguson*, *Barnstormer*, and *Funked Up Fairy Tales*. He has been a directing participant in the NYU Graduate Musical Theatre Writing Program, Playwrights Horizons, Eugene O'Neill Theatre Festival, and the National Alliance of Musical Theatre (NAMT). Writing credits include original songs for *Laugh Whore* (Broadway & Showtime), *USO*, *CBS, VH1, Comedy Central, "The View"*, and the original musical *Guess Who's Coming for Chitlins?*. As an actor, Dixon starred on Broadway, in original casts of *Once On This Island*, *Five Guys Named Moe*, *If/Then*, and *Off-Broadway* in *Steve*, *Bright Lights Big City*, and *tick, tick... Boom*. Television and film credits include: "He's With Me", "Gotham", "Everwood", and "Peacemaker." Dixon's concert work includes: guest soloist for Belgian, Taiwan, Kalamazoo Symphony Orchestras, and directing Lincoln Center's American Songbook, for Tony-winner LaChanze, and Tony & Pulitzer Prize winners Tom Kitt & Brian Yorkey. Dixon credits Yorkey & Kitt for introducing him to Village Theatre, some twelve years ago. The 2018–2019 Season marks Dixon's first as artistic director.

## Board of Directors

Beth Meidinger, *President*

Bruce Wanta, *Past President*

J. Patrick Ostrander, *Treasurer*

Jill Klinge, *Secretary*

Leigh Flor, *Vice President, Board Development*

Lissa Griffith, *Vice President, Board Operations*

Twyla Lucas, *Vice President, Strategic Fundraising*

John Seethoff, *Vice President, Capital Initiatives*

Dan Anderson

Aaron Coe

Eric Emans

Amy Gibart

Heather Goff

Lynn Juniel

Lynnnda Kilpatrick

Gerald Magnani

Lisa McQueen

William McSherry

Amy Murray

Leslie Peng

Matt Poischbeg

Kevin Price

William Rall

Lydia Rapidah

Joshua Rodriguez

Ann Thornton

Todd Thull

Derek Watanabe

Don Weston

Judy Yu

## Emeritus Board

Barb Coplen

D. Edward Jones

Gary Kneepkens

Peggy Swistak

## Village Theatre Staff

### ROBB HUNT *Executive Producer*

#### ARTISTIC

Brandon Ivie, *Associate Artistic Director*

Tim Symons, *Resident Music Director*

Jessica Spencer, *Casting Director*

#### PRODUCTION

Jay Markham, *Production Manager*

Caitlin McCown,

*Associate Production Manager*

Jessi Wasson, *Company Manager*

Bradley C. Bixler, *Technical Director*

Andre Burman, Adam Michard,

*Assistant Technical Directors*

Stacey Garrett,

*Stage Operations Supervisor*

Kayla Duncan, *Production Coordinator*

Brent Warwick, *Resident Sound Designer/*

*Master Sound Engineer*

Kurt Conway, *Master Sound Engineer,*

*Everett*

Natalie Kinsaul, Josh Blaisdell,

*Lead Sound Engineers*

Haley Parcher, *Swing Sound Engineer*

Paul Arnold, *Master Electrician, Issaquah*

Paul Sharp, *Master Electrician, Everett*

Steven Coney, Kcarie Ingerson, Sam

Izenman, Peter King, Kate Takata, Taylor

Whitmire, *Staff Technicians*

Patrick Sherman, *Master Carpenter*

Justine Halsey Martin, Jason Tribby, Mark

Zetterberg, *Lead Carpenters*

Chris Mikolaizik, Jeffrey Whitman Paylor,

*Master Stage Carpenters*

Rachel Bennick, *Properties Manager*

Chloe Kirkwood, *Master Properties*

*Artisan*

Tommy Price, *Lead Properties Carpenter*

Julia B. Franz, *Master Scenic Artist*

Carmen Rodriguez, Rachele Werrick,

*Lead Scenic Artists*

Esther Garcia, *Costume Shop Manager*

Hannah Coleman,

*Costume Shop Assistant*

Brynn McKeen,

*Costume Design Assistant*

Andrea Herman, *Cutter*

Beth Gilroy, *Tailor*

Samantha Shields, *Master Crafts*

Penny McMillan-Hughes, *Stitcher*

Pamela Weinzatl,

*Wardrobe Master, Everett*

Heather Address,

*Wardrobe Master, Issaquah*

Douglas Decker, *Wig Master*

### JERRY DIXON *Artistic Director*

#### OPERATIONS

Erica Weir, *General Manager,*

*Everett Performing Arts Center*

Robert Russell,

*Facilities Manager, Issaquah*

Patrick Ostrander, *Administrative &*

*Development Assistant*

Mike Tran,

*Development & Finance Assistant*

#### AUDIENCE SERVICES

Jennifer Nightingale Myers,

*Box Office Manager*

Michelle Leco,

*Box Office Asst. Manager, Issaquah*

Jeremy Dunn,

*Box Office Asst. Manager, Everett*

Rachel Ballister, *Lead Audience Service*

*Representative, Issaquah*

Jill Todoroff, *Second Lead Audience*

*Service Representative, Issaquah*

Ashley Pempit, *Lead Audience Service*

*Representative, Everett*

Mackenzie Malhotra Evans, Cameron

Schnelz, Lauren Wolbaum, *Audience*

*Services Representatives, Issaquah*

Elizabeth Barrett, Ethan Ditto, Zoe

Jovanovich, *Audience Services*

*Representatives, Everett*

Mickayla Byrd,

*Head of House Manager, Issaquah*

Susan Hansen, Debbie Hinton, Marilyn

Israel, Shannon Russell, Angela Snyder,

Ray Lapine, *House Managers, Issaquah*

Chris Miles,

*House/Rental Coordinator, Everett*

Jeffrey Aney, Jean Fate, Nora Linderorth,

Kathleen Podoll, *House Managers, Everett*

Brenna Anderson, Sara Hall, Callie Mejia,

Mike Tran, *Lobby Attendants, Issaquah*

Jeffrey Aney, Linda Baer, Andee Hansen,

Ryan Weir, *Lobby Attendants, Everett*

#### MARKETING

Jamie Lilly, *Director of Marketing*

Ann Reynolds, *Communications Manager*

Noel Pederson, *Marketing Associate*

Malie Fujii,

*Advertising & Marketing Coordinator*

Lyndsey San Sebastian,

*Digital Media Manager*

Jana Rekosch, *Graphic Designer*

Lauren Wolbaum, *Group Sales*

Irwin Michelman, *Direct Sales*

#### DEVELOPMENT

Frank Stilwagner, *Director of Development*

Janell Johnson, *Associate Development*

*Director: Endowment & Planned Giving*

Aileen Forde,

*Development Manager, Everett*

Bobbi Kotula, *Individual Giving Manager*

Megan Adams,

*Individual & Corporate Giving Manager*

Danielle Franich,

*Event & Annual Fund Manager*

Tracie Mahadeo,

*Donor Stewardship Manager*

Sue Short,

*Donor Services & Database Specialist*

Marion Skalley,

*Development Associate, Everett*

Sara Behrman, *Grant Writing Services*

#### FINANCE & HR

Diane Wright, *Director of Finance*

Darryl Roberts, *HR Manager*

Talie Johnson-Marghani,

*Payroll & Accounting Specialist*

Angela Newton,

*Senior Accounting Associate*

Kelly Haskins, *Accounting Associate*

Heather Berry, *Accounting Associate*

#### YOUTH EDUCATION

Kati Nickerson, *Director of Youth*

*Education & Community Outreach*

Suzie C. Bixler,

*Associate Director of Youth Education*

Janet Cole Hamilton, *KIDSTAGE Education*

*& Outreach Manager, Issaquah*

Maurianna Zingarelli, *KIDSTAGE Education*

*& Outreach Manager, Everett*

Faith Bennett Russell, *KIDSTAGE*

*Education Assistant Manager, Issaquah*

Casey Craig, *Institute Manager, Issaquah*

Jessica Low, *Institute Manager, Everett*

Joel Arpin,

*KIDSTAGE Production Manager, Issaquah*

Aaron Alonso,

*KIDSTAGE Production Manager, Everett*

Angela Linder, *Youth Education*

*Administrator*

Ayana Uriu, *KIDSTAGE Production &*

*Program Assistant, Everett*

Bailey Sipila,

*Education Assistant, Issaquah*



# HART ISLAND

JUNE 7 – 16, 2019

A NEW MUSICAL IN DEVELOPMENT

BY  
**DANNY HAENGIL LARSEN  
& MICHELLE ELLIOTT**

Just off the shore of New York City lies a sorrowful island that serves as a public burial ground for the lonely, forgotten, or impoverished of the city. *Hart Island* is an inspiring and emotional tale of an immigrant woman fighting for her child, and unexpected compassion of a disillusioned inmate who is the only person who can help her. From the authors of *Cloaked*, this hauntingly beautiful new musical observes two people on the fringe of society as they change each other's lives forever.



**SEE IT FIRST. MAKE YOUR MARK. WITNESS THE EVOLUTION.** BETA SERIES IS YOUR CHANCE TO SEE EXCITING NEW MUSICALS WHILE THEY ARE STILL IN THE PROCESS OF BEING CREATED.

**TICKETS: (425) 392-2202  
VILLAGEORIGINALS.ORG**

## Providing musical instruments to students in need

We accept lovingly used instruments and donations to repair them.



**Music4Life™**

[www.Music4Life.org](http://www.Music4Life.org)  
[info@Music4Life.org](mailto:info@Music4Life.org)



*Baccarat*  
*Beautiful gifts*  
*in a red box*



*Dacels*

**JEWELERS & GALLERY**

*When Only The Best Will Do*

3500 Factoria Blvd. S.E., Bellevue, WA • 425.643.2610 • [www.dacels.com](http://www.dacels.com)

