

vinylmax
windows

Passion for Homes and Families

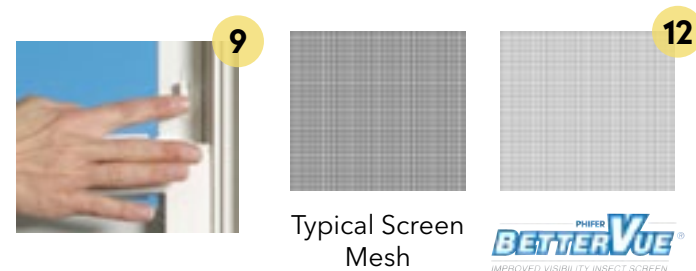


THE
EDISON
SERIES

STANDARD FEATURES

- Multi-chambered vinyl construction** provides a maintenance-free lifestyle with superior strength and thermal efficiency.
- Four-Point fusion welding** guarantees the frames and sashes are always strong and square.
- Shadow grooved sash welds** replicate the classic look of mitered wood corners.
- Integral lift and pull rails** are ergonomically engineered for smooth operation while remaining aesthetically appealing.
- Dual Function partitioned sloped sill** forms a negative pressure pocket that keeps sashes securely in place and water flowing away from your home, even in the most adverse weather conditions.
- Effortless pivot balance system** utilizes stainless steel coils making sash operation smooth, effortless and whisper-quiet.
- Bio-Maxx advanced composite locks and keepers** are 50% stronger than typical die-cast hardware while remaining lead-free, color-true, without fading, warping or chipping.
- Low-profile tilt latches** sit subtly out of view but engage easily when sashes need to be tilted in for cleaning.
- Dual push-button forced entry resistant ASTM Night Locks** limit sash movement for your family's safety and security.
- IdeaSeal™ triple protection weather seal** keeps the indoor and outdoor environments separate with an integral interlock, sill compression seal, and multiple rows of weatherstripping.
- Full balance covers** hide internal systems while eliminating unsightly visible sash stops.
- BetterVue® insect screening with Water Shed Technology™** preserves optical clarity by shedding water and resisting dirt and grime for a sharp, more brilliant outward view.

THE EDISON SERIES



WINDO W TYPES

DOUBLE HUNG



Both the top and bottom sash operate allowing for ventilation and tilt in for easy cleaning.

SLIDERS



Both sashes open horizontally, improving ventilation and brightening any room.

PICTURE WINDOWS



Create a frame for your home's surroundings while maximizing natural light. Architectural shapes available.

PRESTIGE CASEMENTS



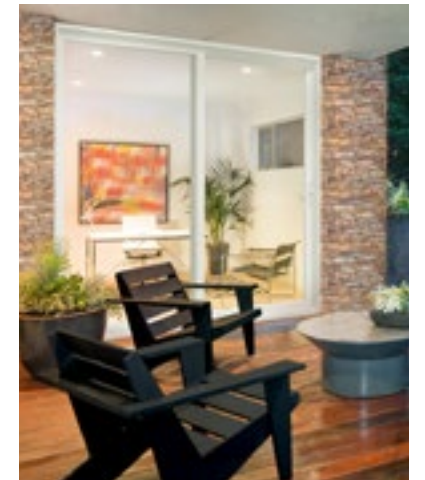
These windows open a full 90° and have a multi-point locking system for ultimate performance.

BAYS & BOWS



Add special space to any room and dimension to the home exterior. Bays and Bows are custom made to match your other windows.

ELEGANCE PATIO DOORS



Effortless operation and enhanced durability that can handle the high foot traffic of a busy home.

THE EDISON SERIES

CHOOSE YOUR PERFECT LOOK

COLORS

Solid Colors



White



Tan

Laminated Interiors



Cavalier Oak



Natural Oak



Colonial Cherry



Vintage Pecan

Laminated Exteriors



Tan



Clay



Bronze

Exterior Finishes



Butter



Tan



Clay



Pebble



Silver



Terra



Cocoa



Chestnut



Chocolate



Bronze



Black



Forest

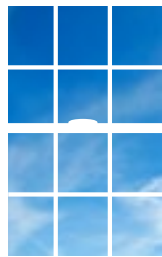


Brick

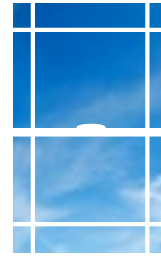
Woodgrain and exterior laminates available on white · Exterior finish available on any color · Custom colors available

GRIDS

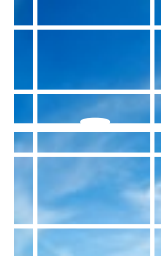
Colonial



Perimeter



Prairie



Valance



Flat, Georgian, and Pencil profiles available. Grids are placed between the glass and are securely locked in to place, so they'll always remain straight and true.

SCREENS



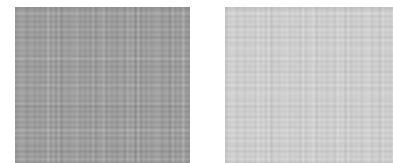
Standard 1/2 Screen



Heavy Duty 1/2 Screen



Full Screen



Typical Screen Mesh



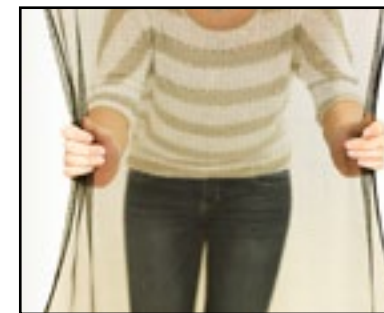
BENEFITS OF BETTERVUE SCREEN WITH WATER SHED TECHNOLOGY

Water Shed Technology gives BetterVue a clear view for the life of the product by repelling water and resisting dirt and grime, making them much less likely to accumulate on the screen.

- Durable, hydrophobic coating will not wash off
- Sheds water and debris during rainstorm or with hose sprayer
- Preserves viewing clarity for more brilliant outward views
- Remains cleaner longer and increases life expectancy of the screening



AVAILABLE UPGRADES



FlexScreen

High-performance PVC coated spring steel frame is damage resistant, beautifully invisible and effortless to install. Simply hold the screen in your hands, bend the sides in, and fit FlexScreen in to your screen track.



Neopor® foam filled frame

BASF Neopor® GPS is a graphite polystyrene rigid foam insulation, strategically custom-fitted in energy chambers in the window frame and sash vinyl. It is comprised of many small pockets of air within a polymer matrix containing graphite. The graphite reflects radiant heat energy like a mirror, increasing the window's resistance to the flow of heat, or R-Value. Neopor® actually increases in R-value as the temperature outside drops.



Sentry System multi-function locking hardware

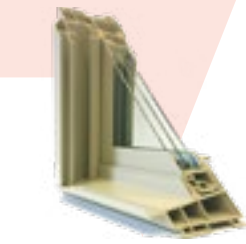
integrates the lock and tilt functions into the same lock housing, leaving an uncluttered appearance.



THE
EDISON
SERIES

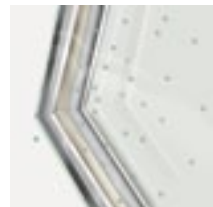
ANATOMY OF AN ENERGY EFFICIENT WINDOW

- Quality Frame Materials:** low-maintenance frame materials, like vinyl, reduce heat transfer and help to better insulate.
- Multiple Panes:** two or three panes of glass with a gas filled airspace are energy-efficient, resist impact damage and provide sound insulation.
- Low E Glass:** reflects heat and keeps heat inside in the winter and outside in the summer. UV is also reflected, protecting furnishings from fading while allowing plants to thrive.
- Gas Fill:** Inert argon and krypton are more dense and insulate better than regular air.
- Warm Edge Spacers:** like Intercept or Super Spacer, keep a window's glass panes the correct distance apart. Warm Edge Spacers insulate pane edges, reducing heat transfer through the window.



Triple Pane Glass is up to 50% more energy efficient than dual pane. Installing triple pane windows also reduces noise from the outside and fading from the sun.

SPACER SYSTEMS



Intercept Spacer System

features a unique, one-piece, tin-plated U-channel design that creates an effective thermal barrier to help reduce conducted heat loss through the window. Its sealed, one-piece design makes Intercept spacers stronger and better at retaining insulating gas than many conventional designs.

Optional Super Spacer

Warm edge Super Spacer is the "no metal" upgrade to help your windows reduce energy costs. Its 100% memory foam formula stands up to a wide range of temperatures and is designed to provide outstanding UV resistance. It dramatically decreases condensation and blocks heat escape for best thermal performance.

HOW DOES LOW-E GLASS WORK?

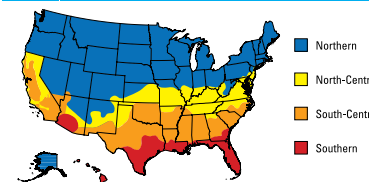
Low Emissivity (Low-E) glass is one of the cornerstones of any energy efficient window. Its primary purpose is managing radiation, whether it's solar, light, ultraviolet, or heat. The secret is two or three microscopic layers of silver, which reflect heat back to its source. Other layers in the Low-E coating filter ultraviolet and solar radiation, while allowing visible light through.



Glass packages are filled with either argon or krypton gas in between the panes of glass. Both gases are denser than air, so they make it more difficult for heat or cold to transmit through the glass units. We use high quality sealants, sophisticated filling equipment and a voluntary verification system to ensure consistent glass performance.

INTELLIGLASS PACKAGES

		GLASS PANES	LOW-E TYPE	AIRSPACE FILLING
IntelliGlass high performance	Northern & North Central climates	2	Standard	Argon
IntelliGlass X solar control	North Central, South Central & Southern climates	2	Solar	Argon
IntelliGlass X³ solar control triple pane	All climates	3	Solar	Argon
IntelliGlass + high performance triple pane	All climates	3	Standard	Argon
IntelliGlass Kr supreme performance triple pane	All climates	3	Standard	Krypton



Installing ENERGY STAR qualified windows and doors lowers energy bills and saves you money. With more efficient windows, you also use less energy, which reduces greenhouse gas emissions from power plants.



Vinylmax is an Energy Star Partner.

The needs of every home are different and with our specialized glass packages you can find the perfect fit. We offer both dual and triple pane glass options and can meet the EPA's ENERGY STAR® criteria depending on your geographic location. And by selecting our IntelliGlass Plus or Supreme triple pane option, the Edison may qualify for Energy Star's Most Efficient 2020®.

WHAT WE MEASURE AND WHY



U-Value

measures the rate of heat transfer and tells you how well the window insulates. The lower the U-Value, the better the window insulates.



Solar Heat Gain Coefficient (SHGC)

measures the fraction of solar energy transmitted and tells you how well the product blocks heat caused by sunlight. SHGC is measured on a scale of 0 to 1. The lower the SHGC, the less solar heat the window transmits.



Visible Light Transmittance

measures the fraction of visible light transmitted through the window. The higher the Visible Light Transmittance, the more light shines through.

4600 Double Hung	No Grids					With Grids						
	Intercept		Super Spacer		VLT	Energy Star	Intercept		Super Spacer		VLT	Energy Star
U Value	SHGC	U Value	SHGC	U Value			SHGC	U Value	SHGC			
IntelliGlass Low E / Argon	.28	.38	.27	.29	.53	N NC SC S	.28	.34	.27	.26	.47	N NC SC S
IntelliGlass X Low E / Argon	.28	.22	.27	.22	.50	NC SC S	.28	.20	.27	.20	.45	NC SC S
IntelliGlass X3 Triple Pane Low E / Argon	.24	.21	.23	.21	.46	N NC SC S	.25	.19	.23	.19	.41	N NC SC S
IntelliGlass Plus Triple Pane Low E / Argon	.20	.24	.18	.24	.40	N NC SC S	.20	.22	.18	.22	.35	N NC SC S
IntelliGlass Supreme Triple Pane Low E / Krypton	.18	.24	.16	.24	.40	N NC SC S	.18	.22	.16	.22	.35	N NC SC S

4650/4653 Slider	No Grids					With Grids						
	Intercept		Super Spacer		VLT	Energy Star	Intercept		Super Spacer		VLT	Energy Star
U Value	SHGC	U Value	SHGC	U Value			SHGC	U Value	SHGC			
IntelliGlass Low E / Argon	.28	.37	.27	.29	.52	N NC SC S	.28	.34	.27	.26	.47	N NC SC S
IntelliGlass X Low E / Argon	.28	.22	.27	.22	.50	NC SC S	.28	.20	.27	.20	.44	NC SC S
IntelliGlass X3 Triple Pane Low E / Argon	.24	.21	.23	.21	.46	N NC SC S	.24	.19	.23	.19	.41	N NC SC S
IntelliGlass Plus Triple Pane Low E / Argon	.20	.24	.18	.24	.39	N NC SC S	.20	.22	.18	.22	.35	N NC SC S
IntelliGlass Supreme Triple Pane Low E / Krypton	.17	.24	.16	.24	.39	N NC SC S	.18	.22	.16	.22	.35	N NC SC S

4670 Picture Window	No Grids					With Grids						
	Intercept		Super Spacer		VLT	Energy Star	Intercept		Super Spacer		VLT	Energy Star
U Value	SHGC	U Value	SHGC	U Value			SHGC	U Value	SHGC			
IntelliGlass Low E / Argon	.27	.39	.26	.30	.55	N NC	.27	.36	.26	.27	.49	N NC
IntelliGlass X Low E / Argon	.27	.23	.26	.23	.52	N NC SC S	.27	.21	.26	.21	.47	N NC SC S
IntelliGlass X3 Triple Pane Low E / Argon	.23	.22	.22	.22	.48	N NC SC S	.23	.20	.22	.20	.43	N NC SC S
IntelliGlass Plus Triple Pane Low E / Argon	.18	.25	.17	.25	.41	N NC SC S	.18	.23	.17	.23	.37	N NC SC S
IntelliGlass Supreme Triple Pane Low E / Krypton	.16	.25	.15	.25	.41	N NC SC S	.16	.23	.15	.23	.37	N NC SC S

Product Rating	Up to this size window*	Design Pressure PSF	Water Resistance PSF	Air Infiltration cfm/ft²
Double Hung R-PG45	40" x 63" SS glass	45	7.5	0.12
Double Hung R-PG50	40" x 63" DS glass	50	7.5	0.09
Slider R-PG25	63" x 44" SS glass	25	4.5	0.13

The lower the U-value, the greater a window's resistance to heat flow and the better its insulating value. The lower the SHGC, the more a product is blocking solar heat from coming through the window. VLT - Visible Light Transmittance - lower values mean less light passing through the window.

* windows outside these size limits have not been structurally tested

2020 Energy Star Most Efficient

WHY VINYLMAX?



Quality First. In our facility, we utilize the most modern manufacturing methods and technology to produce the highest quality vinyl replacement windows. This results in the best value for your home.



Made in the USA. Vinylmax is passionate about American manufacturing, American jobs and the American economy. That is why we source the majority of our components from other American manufacturers and fabricate our windows in our Ohio and New York factories. When you buy a Vinylmax window, you can be sure you are not only getting American quality, but also supporting and sustaining local communities.



Our Process. Modern homes for modern families require windows designed to aesthetically and efficiently complement them. At Vinylmax, we utilize state-of-the-art manufacturing technology to produce both energy efficient windows and patio doors with features and accessories with today's family in mind.



Warranty. To protect your investment and our reputation, we back our products with a Lifetime Limited Warranty so strong that it will exceed your expectations.



Family Values. As a family owned and operated business, we value and respect our employees and their families as well as the millions of families who have our windows in their homes.



OUR STORY

Founded in 1982 by the Doerger family and manufacturing a mere five windows per day, the Vinylmax legacy began to unfold. As one of the very first vinyl window manufacturers in the United States, Vinylmax embraced the philosophy that quality custom windows manufactured quickly would inspire loyalty in its customers.

Today, the next generation of the Doerger family continues to embrace that philosophy. Millions of American homes are more beautiful and more energy efficient, thanks to Vinylmax windows.

THE
EDISON
SERIES

vinylmax
windows

2921 McBride Court
Hamilton, OH 45011
(800) 847-3736
www.vinylmax.com

