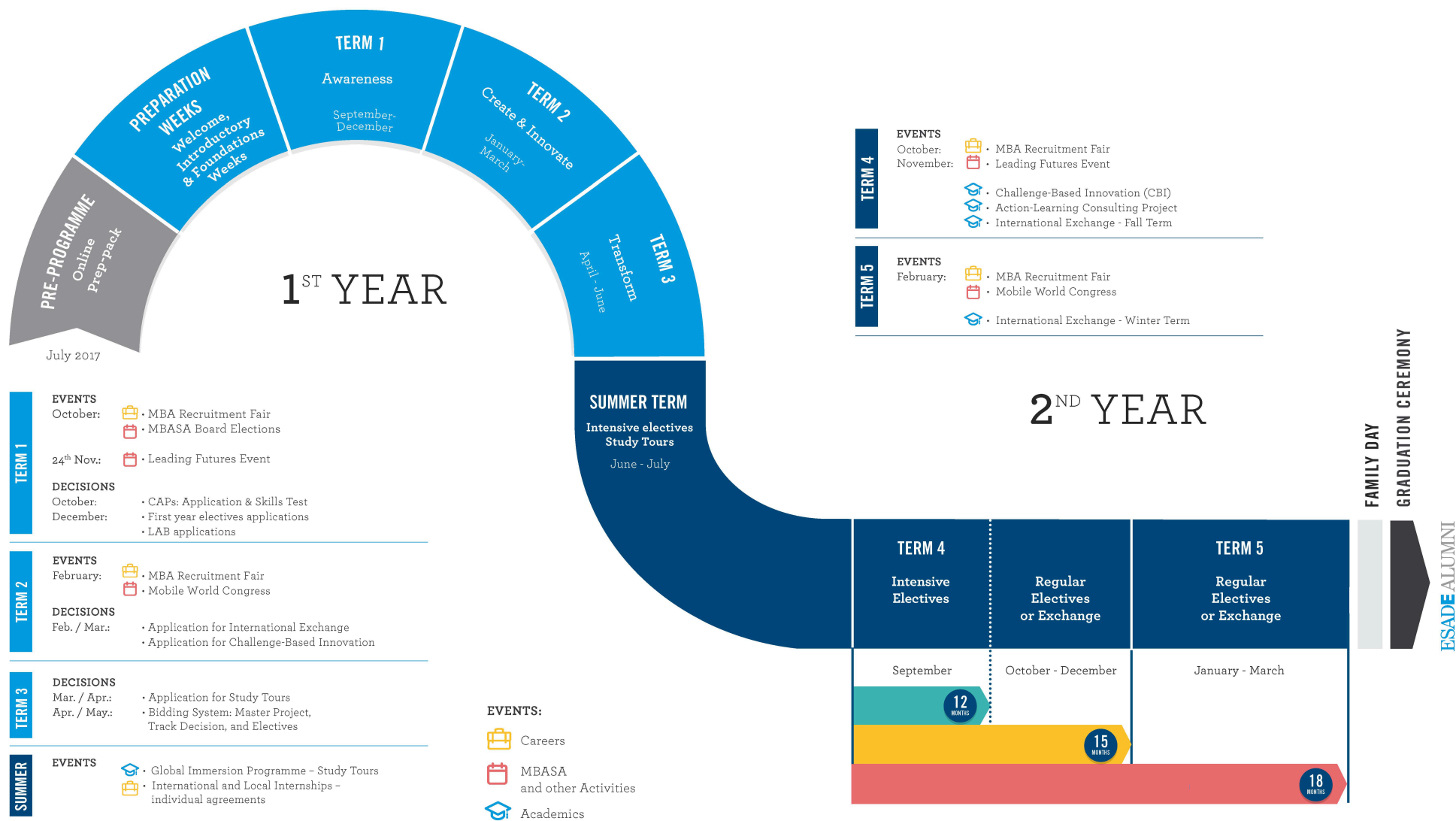



THE ESADE MBA PROGRAMME STRUCTURE



The dates published in this document are confirmed at the date of publication. Make sure you double-check the schedule on the Intranet before the course begins.

The ESADE MBA Programme Management, Barcelona March 2017

	MONDAY		TUESDAY	
Morning 10:00 -13:30	Core classes Mandatory		Core classes Mandatory	
13:30 - 14:30	LUNCH			
Afternoon 14:30 -18:30	Core classes Mandatory	Team meetings Individual or group work	Lab Electives Optional	ESADE Careers Individual advising sessions*
Late Afternoon 18:30 -20:30	MBASA Club Meetings	Team meetings Individual or group work	Language Courses Optional	MBASA Club Meetings



This overview is for informative purposes only. It aims to demonstrate the **typical distribution of classes and other activities** and is not intended to serve as your finalised calendar for the MBA. Not all optional activities included here occur on a weekly basis. Non-recurrent items are not included in this overview, such as treks, case competitions and other events.

During the weekend students typically dedicate about ten hours to the preparation of class-related assignments, readings or case studies, either in the form of individual preparation or team meetings, in addition to social activities.

The dates published in this document are confirmed at the date of publication. Make sure you double-check the schedule on the Intranet before the course begins.

WEDNESDAY		THURSDAY		FRIDAY
Core classes Mandatory		Core classes Mandatory		Core classes Mandatory
LUNCH				
MBASA Events optional	Other First year electives Optional	MBASA Events Optional	Corporate Thursdays Optional	ESADE Careers Individual advising sessions*
Seminars Optional	Team meetings Individual or group work	Language Courses Optional	Team meetings Individual or group work	Team meetings Individual or group work

*You can request an Individual advising appointment with ESADE Careers daily between 09:00 and 18:00

The workload of mandatory academic activities (boxes in cyan) totals approximately 50 hours per week (Monday to Sunday) on average, taking into account classes, teamwork and individual preparation.

The dates published in this document are confirmed at the date of publication. Make sure you double-check the schedule on the Intranet before the course begins.

Calendar for your 1st MBA Year

Preparation Weeks		September 4 th to 29 th 2017
Course Format	Important Dates	
<p>We highly recommend students to schedule their arrival for mid-August in order to be fully set up in Barcelona by the official start of the MBA Programme on September 4th.</p> <p>Welcome Week September 4th – 8th</p> <p>Introductory Week ESADE's Approach to Teaching and Learning Methods, September 12th – 15th</p> <p>Foundation Weeks September 18th – 29th</p>	<p>Sep 11th La Diada - <i>Public Holiday</i></p> <p>Sep 25th La Mercè - <i>Public Holiday</i></p>	
TERM 1 Awareness		October 2 nd to December 22 nd 2017
<i>Core courses</i>		
Course Format	Important Dates	
<p>Courses run on a weekly basis, i.e. one session per week, morning and/or afternoon.</p> <p>Core Courses: General Management & Strategy Global Economy Debates Solving Business Problems Financial Accounting & Finance Organising Human Resources Communication Skills Business Analytics and Decision Making</p> <p>Exam Week: December 18th – 22nd</p> <p>Other Activities: ESADE Careers events and advising sessions Language courses</p>	<p>Oct 12th National Day of Spain - Public Holiday</p> <p>Oct 17th – 18th MBA Recruitment Fair - <i>ESADE Event</i></p> <p>Nov 1st All Saints Day - <i>Public Holiday</i></p> <p>Nov 24th Leading Futures - <i>MBA Event</i></p> <p>Dec 6th Constitution Day - <i>Public Holiday</i></p> <p>Dec 8th Immaculate Conception - <i>Public Holiday</i></p> <p>Dec 23rd Christmas Break – Jan 7th</p>	

The dates published in this document are confirmed at the date of publication. Make sure you double-check the schedule on the Intranet before the course begins.

TERM 2 Create & Innovate

January 8th to March 23rd 2018

Core courses and optional electives

Course Format	Important Dates
<p>Courses run on a weekly basis, i.e. one session per week, morning and/or afternoon.</p> <p>Core Courses: International Business Strategy Entrepreneurship Operations Management Creativity & Innovation Marketing Strategy Business, Government & Society Corporate Finance</p> <p>First Year Electives (to be confirmed): Family Business Management elective I Global Governance in the 21st Century (kick-off)</p> <p>Exam Week: March 19th – 23rd</p> <p>Other Activities: Career Services events and advising sessions Voluntary language courses</p>	<p>Feb 15th MBA Career Day - <i>ESADE Event</i></p> <p>Feb 26th Mobile World Congress & – Mar 1st 4YFN - <i>Event in Barcelona</i></p>

The dates published in this document are confirmed at the date of publication. Make sure you double-check the schedule on the Intranet before the course begins.

TERM 3 Transform

April 3rd to June 15th 2018

Core courses and optional electives

Course Format	Important Dates
<p>Courses run on a weekly basis, i.e. one session per week, morning and/or afternoon. Voluntary language course.</p> <p>Core Courses: Marketing Planning & Implementation Managerial Accounting Managing Ethics & Social Responsibility Technology & Digital Business Negotiation Leadership & Organisational Behaviour Leading Change</p> <p>Business Simulation – Capstone format In-Company Project – Capstone format</p> <p>First Year Electives (to be confirmed): Family Business Management elective II Global Governance in the 21st Century (ctd.)</p> <p>Other Activities: Career Services events and advising sessions Voluntary language courses</p>	<p>March 24th - April 2nd Easter Break - <i>Public Holiday</i></p> <p>April 13th Campus Party - <i>ESADE Event</i></p> <p>April 25th Solidarity Day - <i>ESADE Event</i></p> <p>May 1st Labour Day - <i>Public Holiday</i></p> <p>May <i>MBAT</i> - <i>MBA Sports Event in Paris</i></p> <p>May 21st <i>Pentecost's Monday - Public Holiday</i></p> <p>CAPSTONES: May 21th Business Simulation – June 1st June 4th – 15th In-Company Project</p>

The dates published in this document are confirmed at the date of publication. Make sure you double-check the schedule on the Intranet before the course begins.

Overview of your 2nd MBA Year

MODULE 4: Summer Term Electives + Term 4 Intensive Electives

SUMMER TERM

June 18th to July 13th 2018

Intensive electives

Course Format	Important Dates
Courses are intensive , running from Monday to Friday, in morning and afternoon sessions. In some cases, Saturday morning may be used for examinations.	June 25 th Sant Joan - <i>Public Holiday</i>

SUMMER BREAK 23rd JULY TO 31st AUGUST

TERM 4 – Intensives

September 3rd to 28th 2018

Intensive electives

Course Format	Important Dates
Courses are intensive , running from Monday to Friday, in morning and afternoon sessions. In some cases, Saturday morning may be used for examinations.	Sep 11 th La Diada - <i>Public Holiday</i>
	Sep 24 th La Mercè - <i>Public Holiday</i>

END OF THE 12 MONTH TRACK

The dates published in this document are confirmed at the date of publication. Make sure you double-check the schedule on the Intranet before the course begins.

MODULE 5: Term 4 Regular Electives

TERM 4 – Regular courses

October 1st

Regular electives

to December 21st 2018

Course Format	Important Dates
Courses run on a weekly basis , i.e. one session per week.	October MBA Recruitment Fair - <i>ESADE Event</i>
	Nov 1 st All Saints Day - <i>Public Holiday</i>
	November Leading Futures - <i>ESADE Event</i>
	Dec 6 th Constitution Day - <i>Public Holiday</i>
	Dec 21 st - Christmas Break Jan 7 th

END OF THE 15 MONTH TRACK

MODULE 6: Term 5 Regular Electives

TERM 5

January 8th to April 2019

Regular electives

Course Format	Important Dates
Courses run on a weekly basis , i.e. one session per week.	February MBA Career Day - <i>ESADE Event</i>
	March / April Graduation - <i>ESADE Event</i>

END OF THE 18 MONTH TRACK

The dates published in this document are confirmed at the date of publication. Make sure you double-check the schedule on the Intranet before the course begins.