

Discover  
**AMAZONIA**  
Scotland's Indoor Tropical Rainforest

**ONLINE LESSONS**

**The Forest Floor**

Use the words at the bottom of the page to help you fill in the blanks.

The bottom layer of the rainforest is called the \_\_\_\_\_.

Because the trees in the rainforest are so \_\_\_\_\_, not a lot of sunlight can reach the bottom of the forest, so it can be a very \_\_\_\_\_ place. Only about 2% of sunlight reaches this area!

There are lots and lots of \_\_\_\_\_ found down here, especially creepy crawlies.

Dead leaves, fallen from the plants in the layers above cover the ground. Fungi break down this plant matter and many \_\_\_\_\_ live amongst this 'leaf litter'. Insect-eating animals find plenty to eat down here!

The sun beetle that you met in this online session lives in the forest floor layer in Western Africa. Here they eat rotting leaves and fallen \_\_\_\_\_. When they reproduce, their larvae also live within the leaf litter. They also eat lots of rotting leaves and when they are big enough, they collect substrate from around themselves and form a \_\_\_\_\_. Inside this, they transform into the beautiful \_\_\_\_\_ and emerge out when they are ready.

Larger animals, like tortoises, are also found on the forest floor. The red footed tortoise lives in the \_\_\_\_\_ rainforest in South America. They are very \_\_\_\_\_ moving animals but they have a large hard \_\_\_\_\_ to protect themselves from danger. Red footed tortoises are \_\_\_\_\_, so they feed on leaves, fruits and sometimes small animals such as worms and beetles.

Many, many animals are found in the forest floor layer. Depending on the continent, you will find tigers, pumas, leopards, jaguars, elephants, tapirs, rainforest pigs and gorillas down here too!

OMNIVORES

COCOON

SHELL

DARK

BEETLE

INSECTS

SLOW

ANIMALS

FOREST FLOOR

TALL

AMAZON

FRUITS



Discover  
**AMAZONIA**  
Scotland's Indoor Tropical Rainforest

**ONLINE LESSONS**

**The Forest Floor**

**RED  
FOOTED  
TORTOISE**

*Chelonoidis carbonaria*



**DESCRIPTION**

They are a medium sized tortoise with bright red, yellow or orange patches on their legs, tail and head.

**DISTRIBUTION**

Red footed tortoises are found throughout Central and South America. They are found in dry and wet forest areas, grasslands and savanna.

**DIET**

These tortoises are omnivores and will feast on a variety of grasses, flowers, fungi and weeds whilst also eating small invertebrates, including insects, spiders and worms.

**LIFE SPAN**

This species of tortoise can live for over 50 years!

**STATUS IN THE WILD:** Not evaluated.



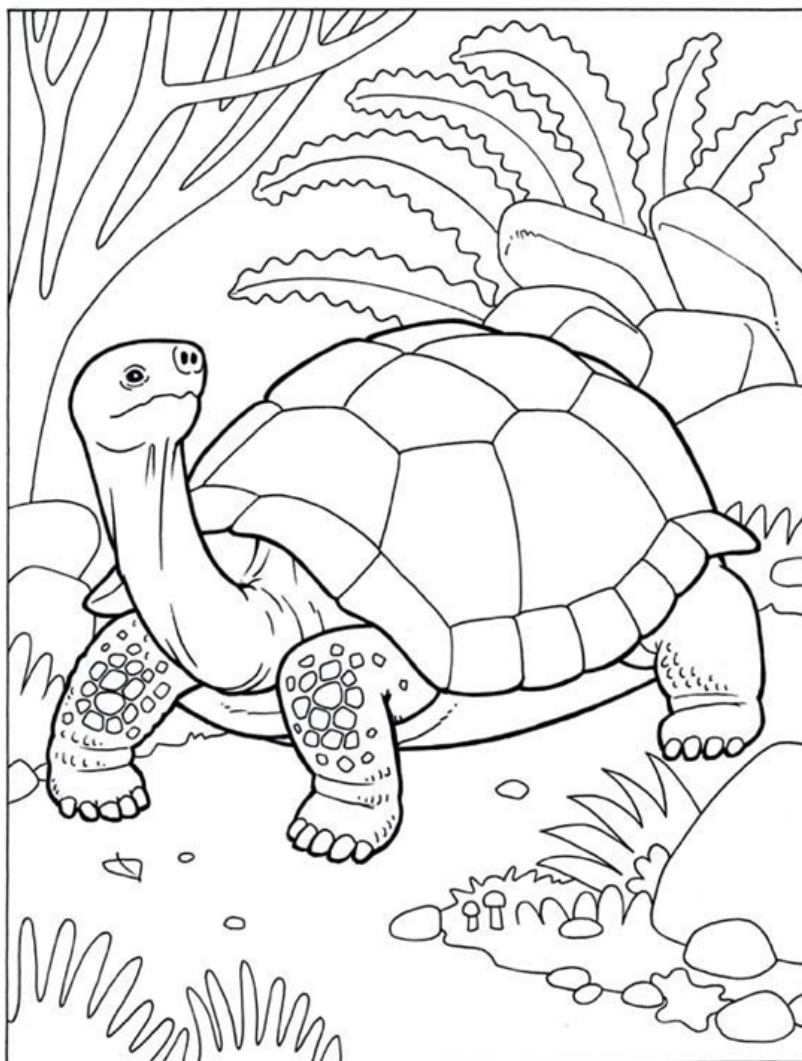
Discover  
**AMAZONIA**  
Scotland's Indoor Tropical Rainforest

**ONLINE LESSONS**

**The Forest Floor**

Today we learnt about the red footed tortoise from South America and met George.

Can you colour this tortoise in to match George?



Discover  
**AMAZONIA**  
Scotland's Indoor Tropical Rainforest

**ONLINE LESSONS**

**The Forest Floor**

**SUN  
BEETLE**

*Pachnoda marginata*



**DESCRIPTION**

This is a medium sized beetle which, when fully grown, reaches just under an inch in length. The body is yellow with dark brown patches on the wings and at the top of the body. The underside is a shiny black colour.

**DIET**

The main diet of this species as an adult is fruit. The larvae will consume leaf litter.

**STATUS IN THE WILD:** Not evaluated.

**DISTRIBUTION**

Found in tropical regions of central and west Africa.

**LIFE CYCLE**

After hatching frog eggs laid, the larvae of this species live under the ground where they survive on a diet of rotting fruit and decomposing leaves. They will remain in this state for up to 5 months.

When making their cocoon, the larvae of this species can sometimes make a low sound which sounds similar to a snore.

Once they have completed the transformation into adult beetles they can live for a further 5 months.

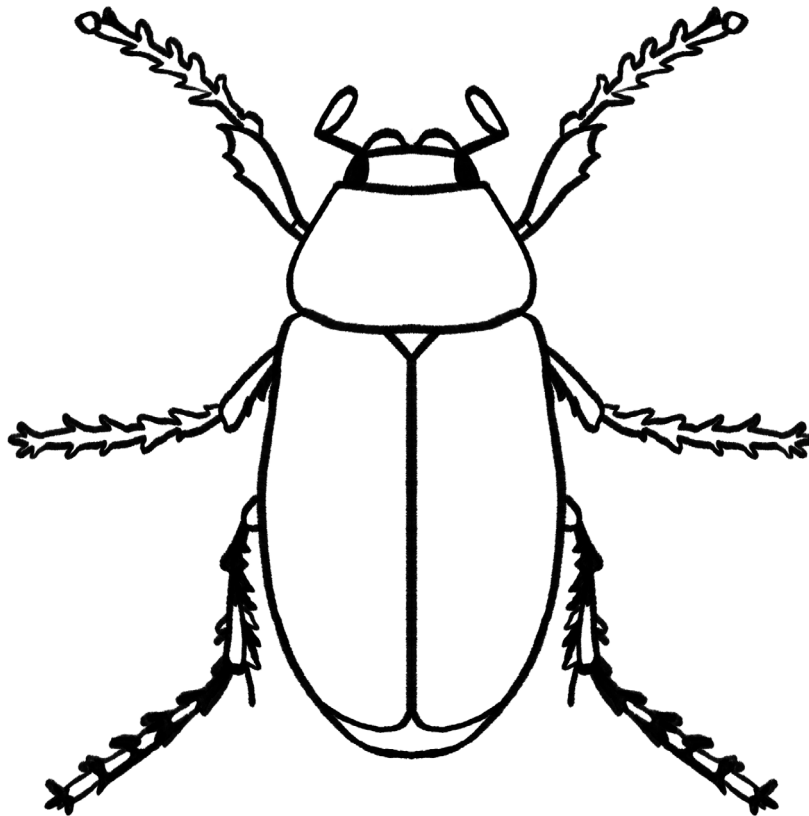


Discover  
**AMAZONIA**  
Scotland's Indoor Tropical Rainforest

**ONLINE LESSONS**

**The Forest Floor**

Today we learnt about the sun beetle from Africa.  
Can you colour this beetle in to match the sun  
beetle's pretty colours?



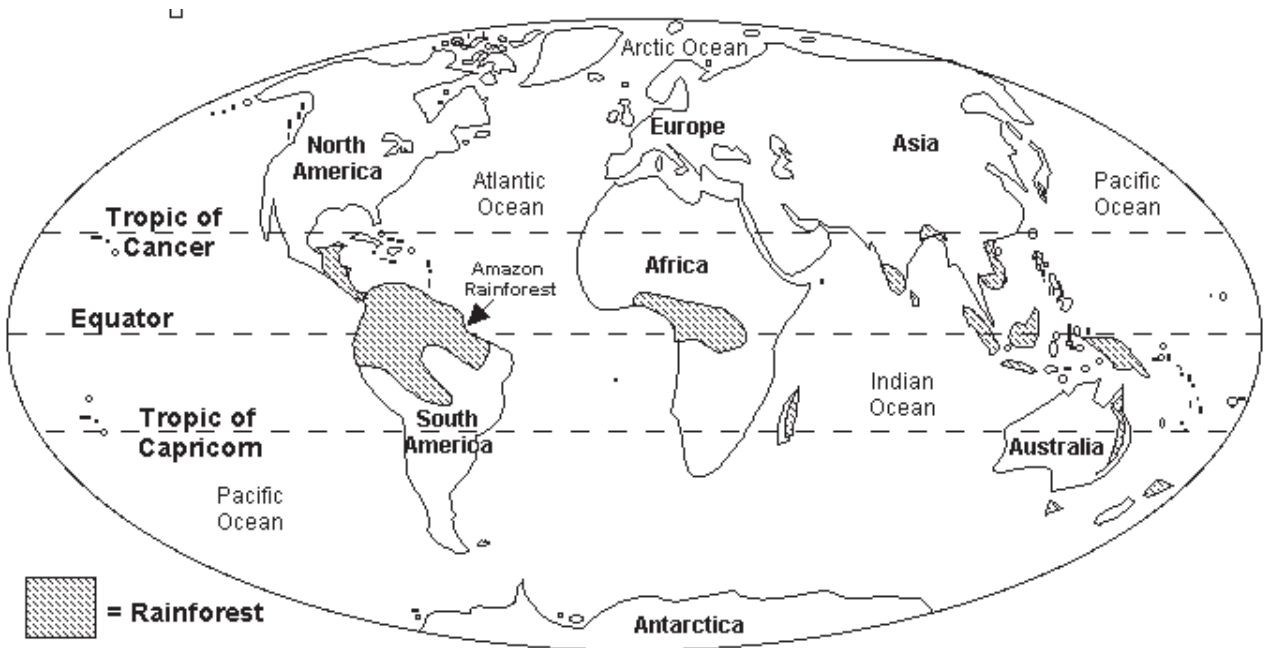
Discover  
**AMAZONIA**  
Scotland's Indoor Tropical Rainforest

**ONLINE LESSONS**

**The Forest Floor**

**Tropical Rainforests of the World**

Using **Green**, **Yellow**, **Blue** and **Red**, colour in the different sections of the world map.



1. Colour the rainforests of the world **green**
2. Colour the rest of the Earth's land **yellow**
3. Colour the oceans, seas and lakes **blue**
4. Colour the lines representing the equator, the Tropic of Cancer, and the Tropic of Capricorn **red**

Discover  
**AMAZONIA**  
Scotland's Indoor Tropical Rainforest

**ONLINE LESSONS**

**The Forest Floor**

**Answer Sheet (Teachers info)**

The bottom layer of the rainforest is called the **FOREST FLOOR**.

Because the trees in the rainforest are so **TALL** not a lot of sunlight can reach the bottom of the forest, so it can be a very **DARK** place. Only about 2% of sunlight reaches this area! There are lots and lots of **ANIMALS** found down here, especially creepy crawlies.

Dead leaves, fallen from the plants in the layers above cover the ground. Fungi break down this plant matter and many **INSECTS** live amongst this 'leaf litter'.

Insect-eating animals find plenty to eat down here!

The sun beetle that you met in this online session lives in the forest floor layer in Western Africa. Here they eat rotting leaves and fallen **FRUITS**. When they reproduce, their larvae also live within the leaf litter. They also eat lots of rotting leaves and when they are big enough, they collect substrate from around themselves and form a **COCOON**. Inside this, they transform into the beautiful **BEETLE** and emerge out when they are ready.

Larger animals, like tortoises, are also found on the forest floor. The red footed tortoise lives in the **AMAZON** rainforest in South America. They are very **SLOW** moving animals but they have a large hard **SHELL** to protect themselves from danger. Red footed tortoises are **OMNIVORES**, so they feed on leaves, fruits and sometimes small animals such as worms and beetles.

Many, many animals are found in the forest floor layer. Depending on the continent, you will find tigers, pumas, leopards, jaguars, elephants, tapirs, rainforest pigs and gorillas down here too!

