

THE NEWSLETTER OF THE ST. TAMMANY PARISH MASTER GARDENERS ASSOCIATION

VOLUME 17 Issue 10

October, 2014

STMGA 2015 Board



Front Row Left to Right: Linda Rowe (Vice President), Peggy Goertz (Secretary)
 Back Row Left to Right: Jimmy DeJean (Treasurer), Ty Guidroz (President)

Words From Our 2015 President

I am very excited about serving the St. Tammany Master Gardeners Association as President for the 2015 year. I believe we have selected an awesome group for the new board and I can't wait to work with them. I know that filling "the shoes" of Susie Andres is going to be a challenge and I am gearing up for the task by beginning to attend project and committee meetings in order to bring myself up to speed. Some initial thoughts on some goals for the upcoming year would be for me to help all project and committee chairs to think bigger and bolder for their projects and committees for 2015. As we grow in membership each year we have very deep pool of talented people who want to volunteer their knowledge and time. We can expand in all areas to provide more support and service to our Parish. I also think that 2015 is the year we should bring STMGA into the 21st century with regards to "IT" or internet technology. In order to bring "IT" to the association, I would like to invite any master gardener who is interested in helping me research this new area to contact me so that we can present "IT" to the board. If anyone has suggestions or ideas for the coming year please email me at my new email address tyguidrozmg@gmail.com

Ty Guidroz

2015 New Board	1-2
President's Message	3
2015 Fall Seminar	3-4
County Agent's Corner	5
MG Programs for 2014	6
Master Gardener Field Trip Information	7-9
Covington Elementary Kinder Garden	10-11
Slidell Library Herb Garden Work Day	12
Gardengoer Word of the Month	13-14
Renewing STMGA Membership for 2015	15
Membership Renewal Form	16
17th Annual Wild Things Work Days	17
Southern Region Master Gardener Conference	18-19
September Meeting Minutes	20-22
September Meeting Photos	22-23
September Board Meeting Minutes	24-25
Vegucator Calendar	26
Calendar of Events	27-28
Directory	29
Editor's Notes	30

STMGA 2015 Board *Continued*



As a relatively new member to the organization, I feel honored and privileged to have the opportunity to serve as treasurer for the next two years. There certainly is an abundance of knowledge, wisdom, and talent within the group. My primary goal is to maintain the fiscal and financial stability of the organization. Any chance to enhance the bottom line by increasing revenues or reducing expenditures is worthy of further review. As an individual goal, I plan on participating in the Advanced Master Gardener Program and to continue furthering my education in horticultural practices with a focus on the science involved in the process. As an organization, I would like to see us increase involvement in community vegetable gardens, parish-wide beautification projects, and community education programs.

Thanks,
Jimmy

It has been my pleasure to serve as secretary. I enjoyed the opportunity to work with the outgoing board and look forward to working with the new leadership as our organization grows.

Peggy Goertz

We were unable to reach Linda Rowe. Her statement will be included in the November issue of the Gardengoer.

President's Message

Thanks to our hard working Nomination Committee! Upon the recommendation of committee members Christy Paulsell, Eileen Gremillion and Rodney Cross we elected by acclamation four great members of STMGA to serve as officers in 2015. Our current Secretary Peggy Goertz will serve for one more year. Joining her on the board will be Ty Guidroz as President, Linda Rowe as Vice president and Jimmy DeJean as Treasurer.

I will automatically serve as Past President/Project Chair. Thank you to those who stepped up to take an office beginning in January and to the members of the Nominating Committee.

Our September seminar drew a crowd of almost 200 gardeners to Journey Fellowship Church in Lacombe. Programs on fall wildflowers and tips on fall and winter gardens were given by Pat Drackett of Crosby Arboretum and Lafayette Parish MG Becky Taylor. Between their excellent and very enjoyable lectures those in attendance were treated to a panel discussion on fall vegetables and herbs by five of our own MGs. Vegucators Linda Rowe and Rodney Cross were joined by "sprouts - aka Vegucators in training - Jimmy DeJean and Paul Andres, and MG Deb Turton. Our advisor Will Afton facilitated the panel. Feedback from attendees was very positive. Thanks to the many volunteers who planned, organized and worked the seminar.

The twenty members of the MG Class of 2014 are nearly finished with lectures and projects. After they complete their dreaded final exam we will welcome them into our association. Hope the passing days bring fall weather and enjoyable time in your garden.

Fall Seminar 2014



Panel Discussion



Guest Speakers



Masters of Ceremony
Susie Andres and Will Afton

Fall Seminar 2014 *Continued*



Refreshments



Registration



Resource Table



Merchandise

Break Time



Table Talks



Large
Crowds !



County Agent's Corner

Greetings St. Tammany Master Gardeners,

I think it is safe to say that the worst of the summer heat has moved out and the temperatures are starting to become comfortable or at least tolerable. It is weather like this that makes us want to get out and play in our gardens. One of the biggest concerns I'm seeing right now is the amount of caterpillars causing damage to landscape plants. As you may know, I receive many phone calls and walk-in appointments each day. It can be quite surprising once you start to piece everything together and realize that many people are calling about very similar problems. Below I have composed some information regarding the specific caterpillars people have been calling in about.

Caterpillars are eating everything!

Caterpillar pests are most numerous during the late summer and early fall months. They feature chewing mouthparts and will consume large amounts of leaf tissue. If populations are high enough, they can completely defoliate a plant almost overnight. And it's not just moth caterpillars doing all the damage, butterfly caterpillars can be a pest too! Here are some of the current public enemies:

- Orange Dog Caterpillar, *Papilio cresphontes*
 - Giant Swallowtail Butterfly
 - Larval stage feeds on foliage of citrus plants
 - Characteristic camouflage coloring (resembles bird droppings)
- Walnut Caterpillar, *Datana integerrima*
 - Short, stout moth with a 1 ½ to 2 inch wingspan with a chestnut color
 - Larval stage feeds on foliage of various *Carya* species (walnut, pecan, hickory, etc...)
 - Immature caterpillars are reddish brown with pale yellow stripes
 - Mature caterpillars are black with gray lines and numerous white hairs
 - Both immature and mature caterpillars will form a C-shape when disturbed
- Red-Headed Azalea Caterpillar, *Datana major*
 - Non-descript moth with a light brown color and 1 ¾ inch wing span
 - Larval stage feeds on foliage of azalea (*Rhododendron spp.*) and blueberry (*Vaccinium spp.*)
 - Immature caterpillars appear yellow with long, red stripes
 - Mature caterpillars are black with yellow stripes and the notorious red head
 - Forms a C-shape when disturbed like the Walnut Caterpillar (Notice that they are both in the same genus)
- Hickory-Horned Devil Caterpillar, *Citheronia regalis*
 - Regal Moth
 - Larval stage has similar host range as Walnut Caterpillar (walnut, pecan, hickory, etc...)
 - Mature caterpillars are very large (up to 5 ½ inches long!)
 - Caterpillar has a bluish-green body and red/black horn-like projections near the head.

If you need to control large populations of any caterpillar pest, there are two safe options Bt (*Bacillus thuringiensis*) and spinosad provide excellent results if applied as the label instructs. However, I do not recommend spraying anything for the Hickory-Horned Devil. These native creatures should be admired for their size and beauty. If you happen to come across one in your garden, take the time to teach your children and grandchildren about them and spread your gardening knowledge!

Your County agent,
William Afton



STPMG 2014 Program

Month	Speaker	Topic	Hint	Problem	Share	Hours
January 15 Castine Center	Joe Lapine Master Gardener 2013	Growing Mirlitons	Yes	Yes	Yes	1
February 19 Castine Center	Keith Williamson Guardi- an AG	Combining Drip Irrigation and Plastic Mulch	No	No	Yes	1
March 19 Castine Center	Daniel Wells Researcher at Hammond Station	Louisiana Superplants	Yes	Yes	Yes	1
March 25	Field Trip	Afton Villa Rosedown Plantation				4
April 16 Bobby Fletcher Barn	No speaker	Spring Plant Swap	No	No	No	0
May 21 Castine Center	Dan Gill Associate Profes- sor Consumer Horticult- ure LSU Ag Center	Scholarship Awards	No	No	Yes	0
June 18 Castine Center	Barbara Moore Master Gardener	African Violets	Yes	Yes	Yes	1
July 16 Castine Center	Deborah Nolan Master Gardener	"The Story of vegetables"	Yes	Yes	Yes	1
August 20 Castine Center	Suzanne Turner Professor of Landscape Architecture LSU	"Martha Turnbull's Garden Diary: Unlocking Rosedown's Story"	Yes	Yes	Yes	1
September 17 Castine Center	Clarke Gernon Sr. Shady Pond Tree Farms	"Christmas Tree Production in Louisiana...from Start to Finish and all that Happens in Between..."	No	No	Yes	1
October 15 Castine Center	No speaker	Fall Plant Swap	No	No	No	
October 28	Field Trip	Longue Vue Home & Gardens City Park Botanical Garden				4
November 19 Castine Center	Gerry Ballanco Master Gardener 2009	Gardening in Alaska	Yes	Yes	Yes	1
December 17	No Speaker	Christmas Party				



St. Tammany Parish Master Gardener Field Trip October 28, 2014

On Tuesday, October 28, 2014, the Master Gardeners of St. Tammany Parish will be visiting Longue Vue House & Gardens and the Botanical Gardens in City Park. The bus will depart the LSU Ag Center office at 8:45 a.m. We will first visit Longue Vue and then, after lunch, will visit the Botanical Gardens.

Longue Vue House and Gardens



The former home of Edgar and Edith Stern (daughter of Julius Rosenwald), the current house is in fact the second. The original house and gardens began in 1924. In 1934 landscape architect Ellen Biddle Shipman began to work with the Sterns on the designs of their gardens. Through the re-working of the gardens the Sterns decided that their house did not allow them to fully enjoy their new grounds and the original house was subsequently moved and a new one erected in its place starting in 1939. This new house was designed by architects William and Geoffrey Platt whose father, Charles A. Platt, was Shipman's mentor. The four facades of the house have four different appearances and out each of the four sides there is a different garden. It has 20 rooms on three stories, with original furnishings.

The gardens include *Asclepias tuberosa*, azaleas, caladium, *Callicarpa americana*, camellia, *Canna*, *Chionanthus retusus*, chrysanthemum, crape myrtle, cyclamen, *Delphinium*, *Ficus carica*, *Gossypium*, hydrangea, *Koelreuteria bipinnata*, Louisiana irises, *Lycoris aurea*, *Narcissus*, *Passiflora incarnata*, *Phytolacca americana*, *Euphorbia pulcherrima*, roses, *Stigmaphyllon ciliatum*, tulips, vitex, and *Zingiber zerumbet*.

Longue Vue was listed on the National Register of Historic Places in 1991,^[1] and further was declared a National Historic Landmark in 2005.^[2] [1]

<https://www.longuevue.com>

St. Tammany Parish Master Gardener Field Trip *Continued*

We will split into two groups. One group will be given a tour of the house while the other tours the gardens. After gardens and house are toured, we will enjoy a box lunch on the Longue Vue grounds. You will have an opportunity to visit Longue Vue's lovely gift shop also.

Botanical Gardens at City Park

Our second stop will be at the Botanical Gardens of New Orleans' City Park at approximately 2:00 p.m. A guided tour will include the gardens, greenhouses and sculpture garden.



The Botanical Gardens in New Orleans City Park was unveiled in 1936 as a part of the massive restructuring and development project of City Park that took place in the 1930s. Although development plans for the new City Park were originally chosen in 1930, it wasn't until the mid-thirties that funding came in the form of government grants for the national WPA movement, a twelve million dollar project that once employed nearly 20,000 workers in New Orleans City Park.^[1] Initially constructed to be a rose garden, the Botanical Garden boasted four outdoor garden rooms, an elegant reflecting pool, and the massive Conservatory of the Two Sisters dedicated to housing some of the garden's more delicate plant life.

St. Tammany Parish Master Gardener Field Trip *Continued*



Gate by Enrique Alferez was formerly the main entrance to the Botanical Garden Design and construction was overseen by three innovators: architect Richard Koch, landscaper William Wierdorn, and sculptor Enrique Alferez.^[2] Together, the three artists designed the Gardens in the style of the widely popular “art-deco” era of the 1930s, constructing the clearly defined and elaborate grounds that would come to be New Orleans' first public classical garden. Using a combination of natural landscape, historic architecture, and surreal artwork, the garden was intended to be a place where families from all around New Orleans could enjoy the natural beauty of City Park. [2]

For more information on the Botanical gardens visit:

http://en.wikipedia.org/wiki/New_Orleans_Botanical_Garden

The bus will depart at 4:00 p.m. to return to Covington.

¹Wikipedia, Longue Vue House and Gardens

²Wikipedia, New Orleans City Park Botanical Gardens

Please send your check for \$35.00, made payable to STMG c/o Martha Gruning, P.O. Box 68, Abita Springs, LA 70420. This includes a box lunch. I will confirm receipt of your check by email.

COVINGTON ELEMENTARY KINDER GARDEN SCHOOL GARDEN PROJECT

The Covington Elementary School Garden Project is an official project of the St. Tammany Master Gardener's Association and is entering its second year. The project named the CES Kinder Garden works with The Kindergarden class of Lorriane Brenneke at Covington Elementary School. This project began from a discussion among some of the members of the 2013 MG class members after a discussion between Betty Cronin and Christy Paulsell, School Gardens Chair, at the 2013 Fall Seminar. Upon graduation and official membership in the STMGA this group began the project. The original members were Betty Cronin, Janet Ronquillo, Chris Nave, Dorothy Delaune, Betty Plummer, and Linda Zitterman. The association supplied four 4x4 raised bed kits and \$100 for soil and plant material. The project was off and running.

The group met and worked with the children once a week for about an hour and spent many more hours planning and working in the gardens. Both a fall/winter and Spring garden were planted. The hours spent were rewarding for all involved. The children were so excited when we were there.

A Fest of the vegetables was held in December and the children loved to eat what they had grown. What could be more rewarding than that. Ownership of the garden belongs to the children as all we did was assist. They planted seeds and plan material, learned the value of fertilizing with fresh compost, picking off the bugs, and watering regularly.

This project is ongoing and we would like to invite anyone interested to join us. It would be great to get more classes involved in the garden because it is large to share. If interested contact Betty Cronin at wawabakes@gmail.com.



COVINGTON ELEMENTARY KINDER GARDEN

Continued



Betty Cronin

Slidell Library Herb Garden Work Day

Top: Linda Franzo (in black), Dinah Keyes (with visor)
Middle: Sandy Arnoult, Kathleen Guidry
Back to camera: June Taffaro



Hiding in the Bushes: Melanie Singh, Kathleen Guidry, Camille Schwandt



Photos by: Susie Andres

GARDENGOER WORD OF THE MONTH



BERMUDA GRASS

I first became interested in Bermuda grass when I heard it was invasive and that you couldn't kill it even if you tried. Perfect, I thought, what better to grow in the mud hole I call my back yard. The more I read, the better I liked it. That is until I found the one thing that Bermuda grass doesn't like.....SHADE! So, now I'm back to square one. My yard gets 22 hours of shade or night and two hours of intense sun when it's directly overhead. I think my new love now will be moss for the back yard. It's a pretty slow grower, but some growth is better than none.

In the meantime, boy did I ever find out interesting things about Bermuda grass. Bermuda grass (*Cynodon dactylon*) grows both wild and cultivated throughout most of the world. It spreads by underground rhizomes and by stolens and is a major turf for sports fields, golf courses, parks and even lawns. Bermuda is tolerant of heat, drought and salt. (But that's not the interesting part.)

In India, the plant 'Tulsi', also known as 'holy basil' is considered the most sacred herb in the country. But the second most sacred herb in India is called Durva (we call it Bermuda grass). India is a rich culture with extensive knowledge of plants, and botanical traditions that have endured for more than 3000 years. We Westerners have learned a lot from the Easterners' treasure chest of knowledge, folklore and history of plants. Did we somehow 'miss the boat' on Bermuda grass?

Bermuda grass is considered anti-inflammatory, antiviral, antifungal, and antibacterial. Both the leaves and the roots can be used medicinally, and it can be used both internally and externally. Applied to the skin as a poultice it can stop bleeding from wounds and nosebleeds or itching and burning. Internally, it is used to ease diarrhea, treat epilepsy, and increase the number of red blood cells in the body. It contains protein and fiber and high amounts of vitamins and minerals, including calcium and potassium. Bermuda grass helps to keep the body more alkaline, rather than acidic and contains more than 65% chlorophyll. "Chlorophyll" and 'alkalinity' are two buzz words these days within the alternative health community. Grass is good!

Bermuda has long been used to feed cattle, but aside from its (above mentioned) medicinal uses for humans, it can also be food for humans. Just as a wheat grass smoothie is supposed to taste good, a Bermuda grass smoothie is supposed to taste even better. (I have not tried either.) Regular consumption of Bermuda grass juice is even said to help reduce obesity. Simply juice the green part of the grass with coconut water (one part grass to three parts water) and enjoy. CAUTION! Before you go dig some up in your back yard maybe we should wait for it to hit the grocery stores. Since you don't know how that grass got in your back yard, you don't know where it's been and what it's been sprayed with, do you? It's not exactly like an herb we

GARDENGOER WORD OF THE MONTH—continued

would want to gather from the woods. Also, there is a Bermuda grass called ‘Tifton 85’- put out by Monsanto which has been very popular for years, that was responsible for killing an entire herd of cattle. There is some confusing information out there as to whether or not this particular strand is a hybrid or a GMO (or both) but (on this particular field) it mutated and produced cyanide gas which was responsible for the herd’s demise. In my research I was only able to find this one example of trouble but it seems both hybrids and GMOs are more susceptible to mutations than ordinary plants.

Since this plant is so plentiful and easy to grow there is very little chance that the pharmaceutical industry will invest millions of dollars to test it medicinally or the agricultural industry to choose it for their next big food crop. Still, I have a new found respect for this crazy grass that is so prolific. Let’s keep it in mind in case our regular food sources disappear.

Kathleen Guidry



Renewing STMGA Membership for 2015

Membership to STPMG may be renewed for 2015. The renewal form is included in the Gardener and will be an attachment to MoM.

To pay your dues submit **a check made payable to STMGA for twelve dollars attached to the Membership Renewal Form.** (Membership Renewal Forms and a stapler will be available at the October, November, and December meetings of STMGA.)

The completed Membership Renewal Form is necessary to verify the information to be printed in the Directory, determine support for present STMGA committees, projects, and make a re-commitment to the LSU Ag Master Gardener Program. Checks may be mailed to Sue Stoltz, 67301 Bill Stoltz Road, Pearl River, LA 70452.

Dues are being accepted now and will be delinquent after December 31, 2014. Membership checks will be deposited only if the member has posted on the LSU AgCenter web site the required number of volunteer and education hours for 2014.

The Commitment statement is available at:

http://www.lsuagcenter.com/en/lawn_garden/master_gardener/program/guidelinesasalouisianamastergardener.htm



2015 STMGA Membership Renewal Form

Please **PRINT** all information so that it is clear and easy to read.

Name (as you wish it to appear in the directory.) _____

Mailing Address - Street or PO Box _____

City and ZIP Code _____

Phone numbers (home) _____ (cell) _____

Email address _____

Committee and Project Support

In 2015 I will support by giving time to the following committees and projects: (check all that apply)

Committees

___ Spring Plant Sale

___ Gardengoer

___ Historical Committee

___ Membership

___ Program

___ Scholarship

___ MoM

___ Hospitality

___ Awards

___ Scholarship

___ Publicity

___ Merchandise

___ Gloves

___ **Administrative STMGA Organization**

___ **Muscle Committee**

___ **4-H Activities**

___ **Other** _____

___ **None of the above**

Education Outreach

___ Ag Center Phone Support

___ Spring Seminar

___ Fall Seminar

___ Table Talks

___ Speaker's Bureau

___ Covington Farmers' Market

___ Slidell Camellia City Farmers' Market

___ West St. Tammany Habitat

___ Vegucators

Projects

___ Abita Springs Library Garden

___ AG Center Super Plants Garden

___ Covington Parent Center Garden

___ Lacombe Wildlife Butterfly Garden

___ Otis House Butterfly Garden

___ School Gardens

___ Slidell CCC Giving Garden

___ Slidell Library Herb Garden

___ Slidell Memorial Hospital Rehab Garden

Recommitment

_____ (Initial for agreement) I have read the ***Commitment for Louisiana Master Gardeners*** and agree to abide by its terms.

(The Commitment is on page 1-5 of the Louisiana Master Gardener Handbook or available on line at

http://www.lsuagcenter.com/en/lawn_garden/master_gardener/program/guidelinesasalouisianamastergardener.htm)

Send the **completed form** along with a dues **payment of \$12 made out to STMGA** to

Sue Stoltz, Membership Chair

67301 Bill Stoltz Road

Pearl River, LA 70452

The check for 2015 Dues will be deposited when the required volunteer and education hours are posted to the LSU Web site.

17th Annual Wild Things Master Gardener Work Days



U.S. Fish & Wildlife Service

17th Annual Wild Things

Save the Date!
October 18th 2014 10AM - 4PM

Youth Wildlife Art Show
Over 400 Entries on Display!
Nature Photography
Canoe, Pontoon, and Van Tours
Wildflower and Nature Walks
Over 40 Wildlife & Conservation Exhibitors, Live Animal Exhibits
Fishing Pond, Hayride,
Pellet Gun and Archery Ranges
Kids Activity Tent
Explore Scenic Nature Tours
Scavenger Hunt
Wildlife Challenge Course
Great Food! Free Live Music!

Bayou Lacombe Centre
U.S. Fish and Wildlife Service
61389 Highway 434
Lacombe, LA 70445
More info: 985/882 2000
www.fws.gov/southeastlouisiana

FRIENDS OF LOUISIANA
WILDLIFE REFUGES, INC.

Food and drink sales benefit
The Friends of LA Wildlife Refuges

The poster features several images: a group of people on a boat, a close-up of a bird of prey, a man teaching a child archery, a map of the event location, and people at a table.

We will be working on Thursday Oct 9—8:30 AM

Thursday Oct 16—8:30 AM

Setup on Friday Oct 17—3:00PM

Setup Saturday at 9:00

Wild things 10—4PM

Takedown until 5PM

No experience necessary!

Thanks Kay

To volunteer contact Kay Hanson at: hansonpk@bellsouth.net

Inviting All Gardeners!!!

2014 Southern Region Master Gardener Conference



October 21 – 24, 2014
Crowne Plaza Hotel
Baton Rouge, LA

Sponsored by:

East Baton Rouge Master Gardener Association
LSU AgCenter, Louisiana Master Gardener Program

For information and registration, go to....

www.southernregionmgconf2014.com



Missed the Early Registration—but not too late!
Early registration ends July 15

Southern Region Master Gardener Conference Invites You

The 2014 Southern Region Master Gardener Conference will be in Baton Rouge October 21-24. Sharing Our Southern Roots is the theme for this year's conference, which will present many opportunities for conference attendees to learn more about how horticulture has contributed to our Southern lifestyle.

East Baton Rouge Master Gardener Association is hosting this conference at the Crowne Plaza Hotel at College Drive and I-10.

Several presenters, including one of five keynote speakers, Marcelle Bienvenu, will talk on the impact of locally grown food products on Southern cuisine. The other keynote speakers are Mary Palmer Dargan, who will speak on healing the earth one garden at a time; Norman Winter, who will focus on the color presentation in your garden each season; Joe Lamp'l, who will give the "dirt" on healthy soil; and Douglas Tallamy, who will explain how to bring nature home.

Also on the agenda are 24 breakout sessions in which presenters will give information on a wide range of topics from hummingbirds, butterflies and natural habitats to designing flower beds for older people and with children in mind, to choosing the right plants and your cooking style. Throughout the four days of the conference, the Southern Garden Marketplace will be open for conference participants to see and buy new and established plant products from businesses associated with horticulture.

Tours of the area include guided excursions to Imahara's Botanical Garden and Afton Villa Gardens, Rosedown Plantation and The Myrtles, Houmas House Plantation, Burden Museum and Gardens, Hammond Research Station, a Cajun Night at White Oak Plantation and a tour of Manchac Swamp and lunch at Frenier Landing.

More information about the keynote and breakout speakers and their topics, tours and registration is available at the conference website www.southernregionmgconf2014.com. Conference registration can be accomplished only online at the conference website. We are taking registrations NOW! Early registration ends July 15.

We look forward to seeing you in Baton Rouge in October.

**St. Tammany Master Gardeners Membership Meeting
Castine Center at Pelican Park in Mandeville
September 17, 2014 Minutes**

The meeting was called to order by President Susie Andres at 10 a.m. In place of the invocation we had a moment of silence and then the Pledge of Allegiance was led by Susie.

Attendance: 62

County Agent Will Afton spoke about the new Advance Master Gardener Program. Phase one is obtaining the Private Pesticide Applicator License and phase two is completing certain core classes. Those interested can sign up for a review session for the Private Pesticide Applicator exam on October 1, cost is \$20. Contact Will if interested.

Sign-up sheets are being circulated for the Wooden Boat Fest and Pelican Park.

Program: Martha introduced our speaker, Clarke Gernon from Shady Pond Tree Farm. Mr. Gernon gave a very interesting talk about Christmas Tree Production in Louisiana . . . From Start to Finish and All That Happens In-between.

Motion made by Pierre Bouchee and second by Pete Hanson to accept the minutes as they appeared in the Gardengoer. Motion approved.

Officers' Reports:

Treasurer - Pam Rowe reported that the Treasurer's report was emailed to the membership. She also informed the membership that checks for our current scholarships have been sent.

Vice President - Martha Gruning gave an updated for future programs: October, plant swap will take place on the west side parking lot (green space); November, Gerri Ballanco, Gardening in Alaska; December, Christmas Party. Field trip will be Tuesday, October 28 leaving the AgCenter at 8:45 a.m. returning approximately 5:15 p.m. Longue Vue Home and Gardens and then to City Park Botanical Gardens. We will have a box lunch at Longue Vue. Cost is \$35 mail check to AgCenter or to Martha.

Motion made by Lyn Monteleone and second by Urbain Breaud to take \$500 from the education monies to defray the cost of entrance fees for the Field trip. Motion approved.

President - Susie announced that our Spring Seminar will be Tuesday, February 3, 2015, at the First Baptist Church in Covington. Dan Gill will be one of the speakers and Susie asked if you know of any other speakers please email their names and info to Will. Susie also mention that we received a thank you note from Theresa Wilfert for the Master Gardeners donation sent to Mother of the Redeemer Monastery in Opelousa in memory of Leonard.

Committee Reports:

Nominating – Christy Paulsell and the Nominating Committee (Eileen Gremillion, Rodney Cross) presented the 2015 Slate of Officers: President - Ty Guidroz, Vice President – Linda Rowe, Treasurer – Jimmy DeJean, and Secretary – Peggy Goertz. No nominations were received from the floor. Lyn Monteleone made a motion to accept the nominations as presented by the nominating committee , second by Eileen Gremillion. Motion passed.

St. Tammany Master Gardeners Membership Meeting Minutes *Continued*

Membership/Honor Awards – Sandy Arnoult spoke about the honor award which as voted on at the August meeting for the 2014 award to remain the same as last year. Sandy then made a motion to increase the hours beginning in 2015 from 50 to 75 hours (required 6 education hours must also be earned) to receive an honor award from STMGA. Second by Kathleen Guidry. Discussion: Travel time from house to projects and back. Vote taken: 9 against, motion passed. To be a member in good standing has not changed, 20 volunteer hours and 6 education are required. Sandy then made a motion to require that the 75 hours earned for the STMGA honor award be earned through activities directly associated with projects and committees of the STMGA. Second by Art Scott. Discussion: Funds generated through Master Gardener projects are used to purchase awards therefore honor awards should be awarded on hours spent on these projects or committees. Total project hours are turned in to the Award Chair at the end of the year. Vote taken: 31 yes, 20 no; motion passed.

Hospitality – Barbara Moore announced that the Christmas Party on December 17 will be at Suzanne Krieger's house in Slidell.

Scholarship - Pam Peltier announced that the Scholarship committee will meet Tuesday, September 23 at Betty Cronin house to discuss and write up the new Master Gardener scholarship. Everyone is invited.

Project Reports:

Fall Seminar: Susie announced that the seminar is this Friday, setup is Thursday 1 p.m.

Slidell Library Herb Garden: The Fall Herb Fest will be Tuesday, September 30, 3 to 6 p.m. Motion made by Ty Guidroz and second by Paul Andres to give the Slidell Library committee \$100 for the Herb Fest. Motion passed. Melanie Singh, chairman.

Abita Library: Next event November 5 information will be in MoM. Motion made by Martha Gruning and second by Paul Andres to give the Abita Library committee \$100. Motion passed. Martha Gruning, chairman.

Wooden Boat Fest: October 11 and 12. Mona Russell, chairman.

Lacombe Wildlife Wild Thing will be Saturday, October 18. Sign-up sheet is circulating. Kay and Pete Hanson, chairpersons.

Beau Provence Assisted Living Center: Meeting scheduled for tomorrow to discuss our roll going forward with the Center. Harold Ryan, contact.

New Business:

Parenting Center: Motion made by Marie Porche for the Master Gardeners to participate in the Parenting Center Monster Mash. Second by Ty Guidroz. Motion passed. Motion by Barbara Moore and second by Eileen Gremillion to give the Parenting Center \$100 for the Monster Mash. Motion passed.

St. Tammany Master Gardeners Membership Meeting Minutes *Continued*

Announcements:

Urbain Breaud announced that seven people have signed up for the wine making classes.

Next board meeting is Friday, November 7 at the AgCenter. The incoming officers and project and committee chairs are invited to attend.

Meeting adjourned at 12:05 p.m.

Respectfully submitted by

Peggy Goertz, Secretary



Break Time



Member Meeting September 4, 2014



**Pictures by
Dorothy Delaune**

Martha Gruning & Clark Germon Jr
of
Shady Pond Tree Farm

Refreshments

Sharing Table



Reviewing Soil Sample



**St. Tammany Master Gardeners Board Meeting
Causeway Branch of the St. Tammany Library in Mandeville
September 4, 2014 Minutes**

President Susie Andres called the meeting to order at 9 a.m.

Attendance: Susie Andres, Martha Gruning, Judy Wood, Art Scott, Pam Peltier, and Peggy Goertz.

Martha Gruning motioned to accept the June board minutes as presented in the Gardengoer. Susie Andres seconded. Motion approved.

Committee Reports:

Membership - Judy Wood announced that the membership renewal form will be in the October Gardengoer. Two motions will be made at the general membership meeting, one to increase the award hours and the other for Master Gardener projects.

Program – Martha Gruning stated that the programs are set through the end of the year. The fall field trip to Longue Vue Home and Gardens and to City Park Botanical Gardens will cost \$45 each. A motion will be made at the general membership meeting for the organization to give \$500 towards the entry fee making the cost \$35 members and \$45 non-members. The October plant swap will be at the Castine Center. Gerri Ballanco will be our November speaker and Christmas party will be at Suzanne Krieger's house.

MoM – Art Scott, the new class will receive the October 13 MoM.

Scholarship - Pam Peltier announced that the Scholarship committee has redesigned and added a paragraph about Bobby Fletcher to the scholarship. The committee is now working on establishing guidelines to the St. Tammany Parish Master Gardener Scholarship.

Project Reports:

Fall seminar – Susie Andres mentioned that the committee will use garden gloves and books for door prizes.

Slidell Library Herb Garden – Herb Fest September 30, flyer in MoM.

Madisonville Wooden Boat Festival – Mona Russell will chair, committee working on activity idea for tent.

Wild Things – Scheduled for October 18, last year cancelled because of government shut down. Contact Kay Hanson.

Abita Library – Meeting scheduled for September 10, 10 a.m.

New Business:

Spring 2015 Seminar – At First Baptist Church in Covington. The 2013 class will mentor the 2014 class.

St. Tammany Master Gardeners Board Meeting Minutes
continued

Next Board meeting is scheduled for Friday, November 7, 9:30 a.m. at the AgCenter. New board and project and committee chairs are invited to attend.

Meeting adjourned at 10:45 a.m.

Respectfully submitted,
Peggy Goertz



Dates At-A-Glance FOR VEGUCATOR CURRICULUM CALENDAR for 2014

1 ST QUARTER		TOPICS, SPEAKERS & DATES	DATE – WEDNESDAYS (9 – 11:30)
January	8 th -growing spring veggies from seed - Jerry		1 8-pulse talk 15-MG meeting - RUSH 22 29
February	12 th -meet the sprouts – all interested are welcome; the WIKI; your thumb drive		5 12-welcome to new class of sprouts 19-MG meeting 26
March	5 th -spring gardens –seeds and transplants to consider Kiki?		5- pulse talk 12 19-MG meeting 26-PowerPoint how-to seminar - basic
2 ND QUARTER		TOPICS, SPEAKERS & DATES	DATE – WEDNESDAYS (9 – 11:30)
April			2- 9- PowerPoint how-to seminar - advanced 16-MG meeting 23- 30-
May			7 14- garden visits 21-MG meeting 28
June	4 th – move to early March? 25 th -SPROUT seminars every other Wed beginning 25 th of June until finished		4-Faculty seminar 11 18-MG meeting 25-sprout talks begin
3 RD QUARTER		TOPICS, SPEAKERS & DATES	DATE – WEDNESDAYS (9 – 11:30)
July			2 9-sprout talks 16-MG meeting 23-sprout talks 30
August			6 13-sprout talks 20-MG meeting 27-sprout talks if needed
September	10 th -What to plant for fall and winter garden – Will Afton		3 10- faculty talks 17-MG meeting 24
4 TH QUARTER		TOPICS, SPEAKERS & DATES	DATE – WEDNESDAYS (9 – 11:30)
October			1 8-Pulse talk 15-MG meeting 22 29
November			5 12-Pulse talk 19-MG meeting 26-xxx
December			3-xxx 10-sprout TEST 17-MG Christmas Party 24-xxx 31-xxx

Calendar of Events

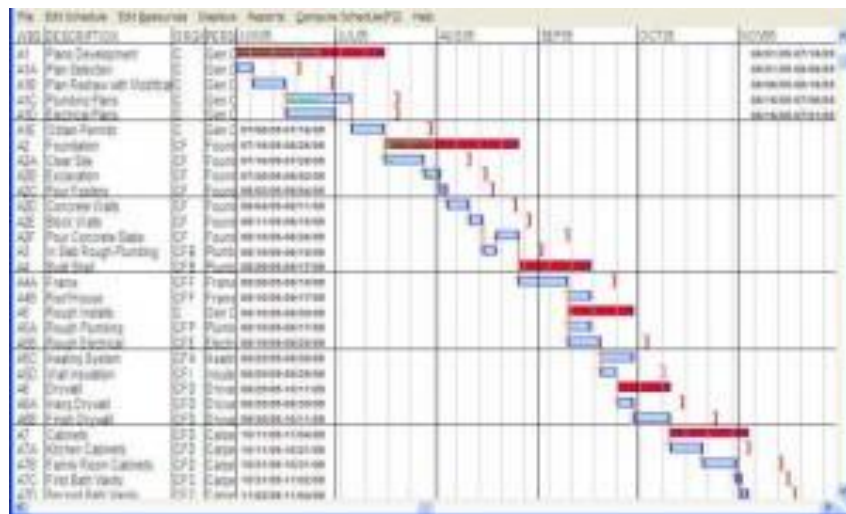
October 2014	
1-6	St. Tammany Parish Fair
2	Abita Springs Garden Workday 9 AM—11 AM
8	Vegucator Class – Ag Center 9 AM
9	MG 2014 Classes End
11	Slidell Market 8 AM to noon
11-12	Wooden Boat Fest Madisonville 10 AM—5 PM Mona Russell at morusell62@gmail.com
14	Wine Making Course—Ag Center 6:30 PM —8:30 PM
15	STPMG Monthly Meeting – Castine Center 10 AM (Plant Swap)
18	Covington Market 8 AM to noon
18	Wild Things Lacombe Butterfly Garden Set up 9 AM; work 10 AM—4 PM Kay Hanson, hansonpk@bellouth.net
18	Monster Mash Bogue Falaya Park 10AM—3 PM Marie Porche marieporche@yahoo.com
21-24	Southern Region MG Conference—Baton Rouge
25	Gardengoer Deadline
28	STMGA Fall Field Trip Longue Vue and Botanical Gardens 8:45AM to 5:15 PM Martha Gruning at mgruning@bellsouth.net
30	MG 2014 Orientation to STPMG 9 AM Ag Center

November 2014	
5	Abita Library Event 4 PM - 5:30 PM Martha Gruning, mgruning@bellsouth.net
7	STPMG Board Meeting 9:30 AM (Friday, AgCenter—Pot Luck to follow)
8	Slidell Market 8 AM—noon
11	Wine Making Course—Ag Center 6:30 PM —8:30 PM
12	Vegucator Class 9 AM
15	Covington Market 8 AM—noon
19	STPMG Monthly Meeting Castine Center 10 AM
25	Gardengoer Deadline

Calendar of Events

December 2014	
9	Wine Making Course—Ag Center 6:30 PM —8:30 PM
10	Vegucator Class 9 AM
13	Slidell Market 8 AM to noon
17	STPMG Christmas Party Suzanne Krieger's house (Slidell) details to follow
15	Covington Market 8 AM—noon
20	STPMG Monthly Meeting Castine Center 10 AM
25	Gardengoer Deadline

Tracking Our Schedules !



STPMG Directory

PRESIDENT:

Susie Andres, susieandres@gmail.com

VICE PRESIDENT & PROGRAMS:

Martha Gruning, mgruning@bellsouth.net

TREASURER:

Pam Rowe, PamMG09@yahoo.com

SECRETARY:

Peggy Goertz, peggpegg@aol.com

**LSU AGCENTER MASTER GARDENER
COORDINATOR/COUNTY AGENT:**

Will Afton, WAfton@agcenter.lsu.edu

LSU AGCENTER OFFICE:

Mary Beth Kaizer, MKaizer@agcenter.lsu.edu

LSU AGCENTER OFFICE**VOLUNTEER COORDINATOR:**

Cindy Manger, beachin70124@gmail.com

COMMUNICATION SPECIALIST:

Art Scott, folsomart@bellsouth.net

GLOVES:

Peggy Goertz, peggpegg@aol.com

HISTORICAL:

Kathleen Guidry, katfire@bellsouth.net

Gail Hinkley, dcghinkley@bellsouth.net

HONORS:

Sandy Arnoult, sarnoult@charter.net

HOSPITALITY:

Barbara Moore, babsofil@gmail.com

MEMBERSHIP CHAIRMAN:

Judy Wood, jazzwood@charter.net

MERCHANDISE:

Dee Middleton, doloresmiddleton@ymail.com

NEWSLETTER EDITOR:

Jan Pesses, pessesgardengoer@gmail.com

PARLIMENTARIAN:

Art Scott, folsomart@bellsouth.net

PLANT SHOW:

Kay and Pete Hansen, hansonpk@bellsouth.net

PROJECTS COMMITTEE:

Julie Deus, juliedeus6@gmail.com

PUBLICITY:

Ty Guidroz, tyguidroz@charter.net

SCHOLARSHIP:

Pam Peltier, peltier72@aol.com

SPEAKERS BUREAU:

Gerri Sommers, gsommers@bellsouth.net

ABITA SPRINGS LIBRARY:

Martha Gruning, mgruning@bellsouth.net

**CHRISTIAN COMMUNITY CONCERN SLIDELL
GIVING GARDEN:**

Paul Andres, pkandres@bellsouth.net

COVINGTON FARMERS' MKT:

Jill Stoltz, mailto:Jill@businessworks.com

LACOMBE BUTTERFLY GARDEN:

Kay Hanson, hansonpk@bellouth.net

**LSU AGCENTER LOUISIANA SUPER PLANT
GARDEN:**

Janet Ronquillo, justang5@cox.net

MAGIC WINGS BUTTERFLY GARDEN:

Marie Porche, marieporche@yahoo.com

OTIS HOUSE BUTTERFLY GARDEN:

Ann Durel, adurel@bellsouth.net

**ROOTING THE FUTURE: MGs PARTNER WITH
STPSB SCHOOLS:**

Christy Paulsell, j.christine.paulsell@stpsb.org

SLIDELL FARMER'S MKT:

Sue Clites, mailto:suethern@yahoo.com

SLIDELL HERB GARDEN:

June Taffaro cptjpt@yahoo.com

Camille Schwandt camilleschwandt@charter.net

**SLIDELL MEMORIAL HOSPITAL REHAB GAR-
DEN:**

Leslie Landeche, rocknlou@bellsouth.net

VEGUCATORS & TOMATO FOCUS GROUP:

Deborah Nolan, mamere09@gmail.com

**W. ST. TAMMANY HABITAT FOR
HUMANITY PROJECT:**

Nancy Thompson, nthomps25@bellsouth.net

Notes From the Editor:

I thought someone said things slow down in October-November-December? We are as busy as ever! Be sure to fill out your membership renewal and choose the activities you want to participate in. There is no force on earth as strong as a motivated group of people working toward a common goal.



*Master Gardener Photo Link:
2014 Pictures (press Ctrl click)
https://drive.google.com/folderview?id=0B_pGgpE3CheTUFdDbGRGczIwR0U&usp=sharing*

Past issues of the Gardengoer can be found on the LSU AgCenter, St. Tammany webpage. All issues since January 2010 are listed. Below is a link to the issues online. http://www.lsuagcenter.com/en/our_offices/parishes/St.+Tammany/Features/Newsletters/Gardengoer/index.htm

Here is the link to the LSU AgCenter site to log your hours. Keep posting those hours on a regular basis. http://www.lsuagcenter.com/en/lawn_garden/master_gardener/Reporting+Volunteer+Hours/

Jan Pesses

THE GARDENGOER

**THE NEWSLETTER OF THE
ST. TAMMANY MASTER
GARDENERS ASSOCIATION**

Cooperative Extension Service

St. Tammany Parish

1301 N. Florida Street

Covington, LA 70433

Phone: 985-875-2635 (Covington)

Fax: 985-875-2639

Website: www.lsuagcenter.com/mastergardener/