

# THE INTERMODAL BUSINESS OF METRANS

*THE GLOBAL  
INTERMODAL  
SOLUTION*



# METRANS



**METRANS**



Carbon Neutral  
Transport

## PORT LOGISTICS SUBGROUP

### CONTAINER

- Container handling
- Container-related services (e.g. repair and maintenance)

### INTERMODAL

- Rail & road transport services in the ports' hinterland
- Operation of hinterland terminals

### LOGISTICS

- Specialist handling – dry bulk, fruit, ro-ro, etc.
- Consultancy

### REAL ESTATE

- Speicherstadt, the historical warehouse district
- Port real estate
- Fischmarkt Hamburg-Altona

# METRANS

2020 figures



## General information:

founded 1991, 100% HHLA

## Revenue:

nearly 450 000 000 EUR

## Intermodal:

over 1 200 000 TEU

## Depots:

over 1 200 000 TEU

## Employees:

2 216 (December 2020)



# Profile of the METRANS Group

*Terminals, Locomotives, Wagons and Repair Shops*



## **5 HUB terminals & depots**

*Czech Republic, Slovakia, Poland & Hungary*

## **12 inland terminals & depots**

*Czech Republic, Slovakia, Poland, Austria & Germany*

## **NEW TERMINALS 2023 #18 ZALAEGERSZEG**

*to come...*

## **Over 2 million m<sup>2</sup> on Depot & Terminal capacities**

**Almost 80 locomotives**

**Almost 3 000 wagons**

## **2 repair shops for locomotives & wagons**

*Kolin & Dunajska Streda*

## **Offices in the ports**

*of Hamburg, Bremerhaven & Koper*

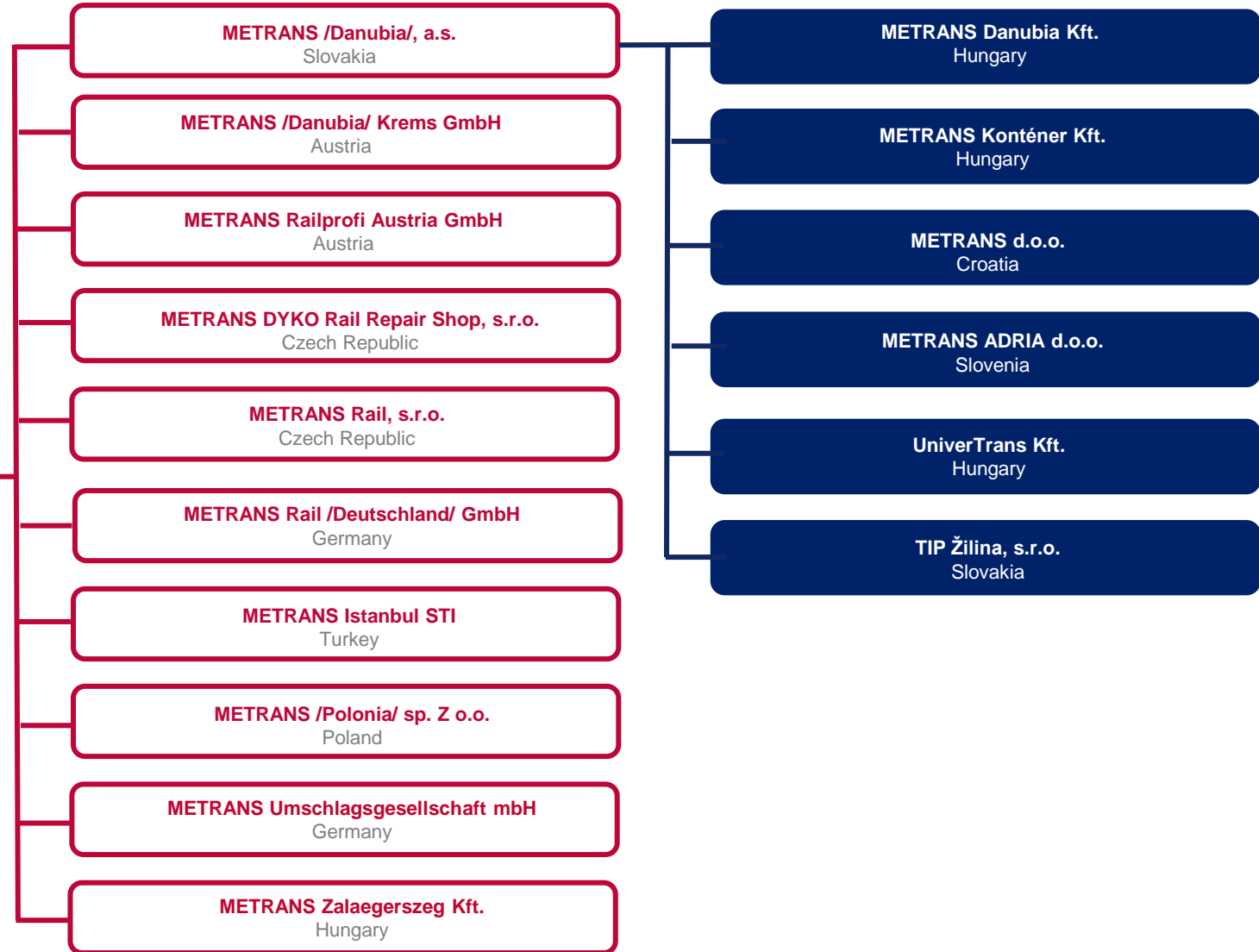


# METRANS Group

Established in 1991, sites in 9 countries, more than 2 000 employees

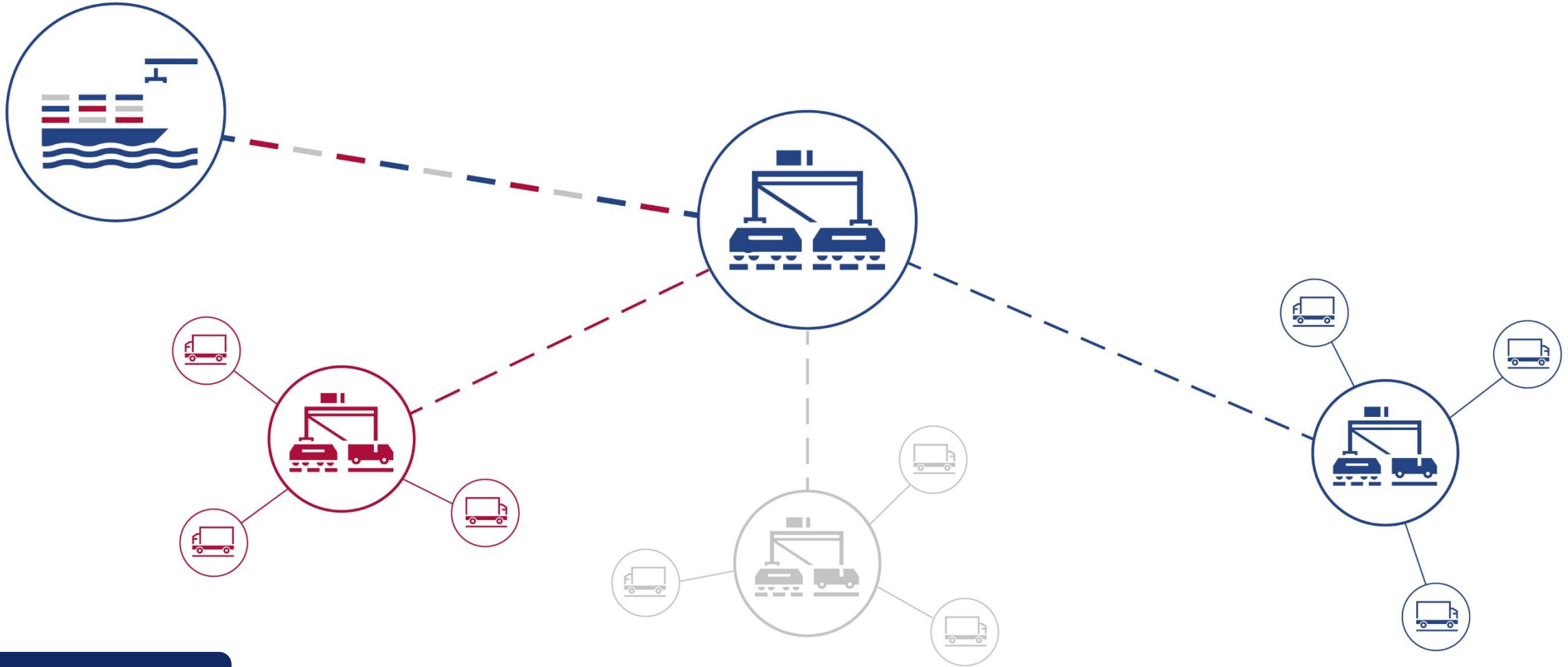


**METRANS, a.s.**  
Prague, Czech Republic



# The HUB & SHUTTLE System

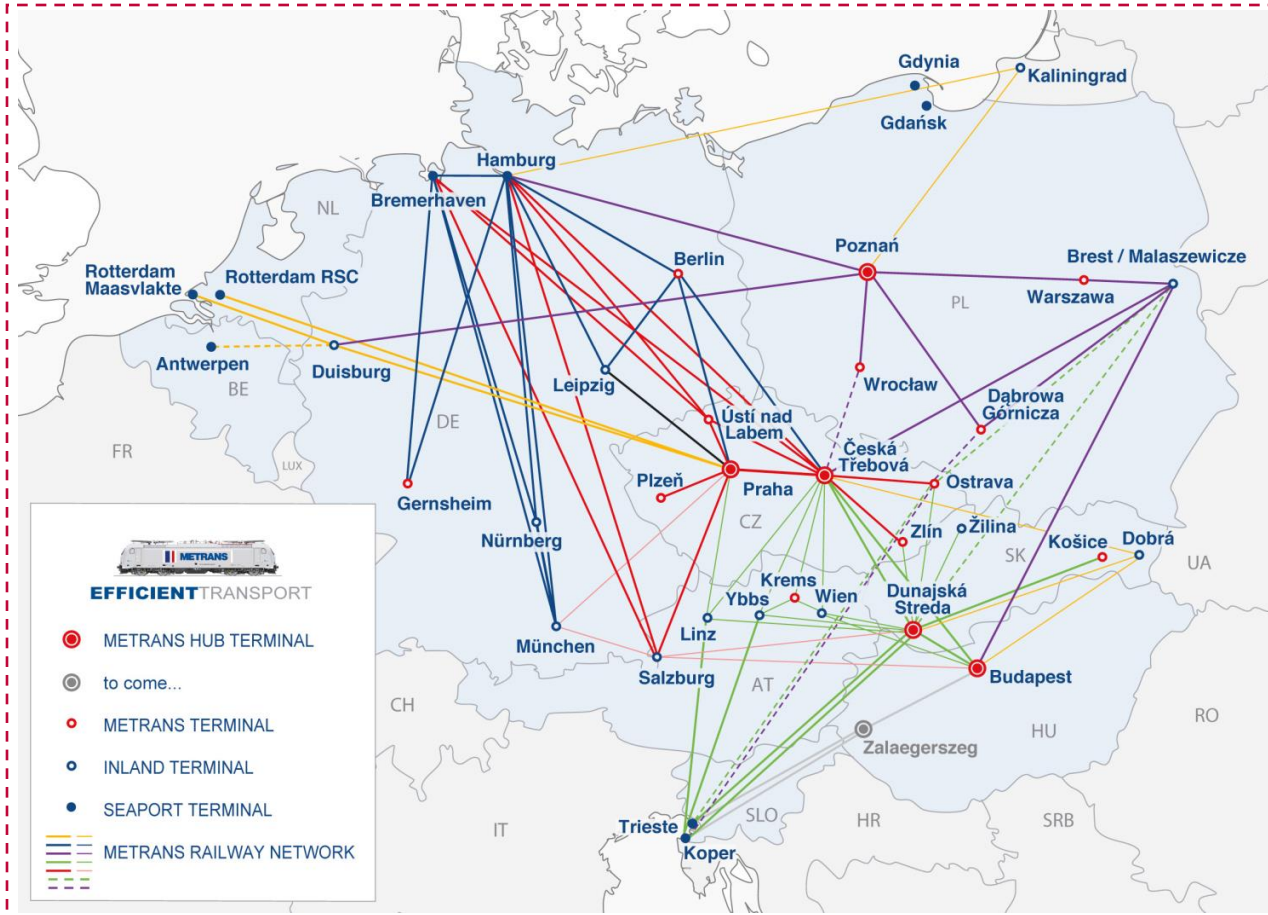
*The Ports are linked with a Network of HUB and Inland Terminals*





# New Silk Road

## METRANS Connections to the New Silk Road



### Malaszewicze / Brest to:

- Warszawa
- Poznan
- Hamburg
- Duisburg
- Munich / Nuremberg via Hamburg
- Ceska Trebova with daily connection to all METRANS terminals as shown

### Dobra / Chop to:

- Budapest
- Dunajska Streda
- Ceska Trebova
- Hamburg
- Poznan
- Kaliningrad



## PRAHA

*since 1991*



- Size: 420,000 m<sup>2</sup>
- Storage capacity: 15,000 TEU full + 10,000 TEU empty
- 7 sidings of 600 m, 2 sidings of 550 m, 6 sidings of 350 m
- 6 portal cranes, 3 reach stackers (45t), 8 reach stackers (10/12t)
- 4 shunters
- 10 trains can be handled at the same time
- Repair facility for containers
- On-site customs office
- Operates 24/7/365

## DUNAJSKA STREDA

*since 1999*



- Size: 280,000 m<sup>2</sup>
- Storage capacity: 25,000 TEU full + 15,000 TEU empty
- 5 sidings of 650 m, 4 sidings of 550 m
- 3 portal cranes, 6 reach stackers (45t), 9 reach stackers (12t)
- 9 trains can be handled at the same time
- Repair facility for containers
- On-site customs office
- Operates 24/7/365

## CESKA TREBOVA

*since 2013*



- Size: 138,000 m<sup>2</sup>
- Storage capacity: 4,500 TEU full + 4,200 TEU empty
- 6 sidings of 740 m
- 3 portal cranes, 3 reach stackers (12t)
- 6 trains can be handled at the same time
- On-site customs office
- Repair facility for containers
- Operates 24/7/365

## BUDAPEST

since 2017



- Size: 143,500 m<sup>2</sup>
- Storage capacity: 12,500 TEU full + 7,500 TEU empty
- 6 sidings of 650 m, 2 sidings of 500 m
- 3 portal cranes, 9 reach stackers
- 6 trains can be handled at the same time
- Repair facility for containers
- On-site customs office
- Operates 24/7/365

## POZNAN (Gadki)

since 2011



- Size: 134,000 m<sup>2</sup>
- 1 siding of 750 m, 3 sidings of 630 m
- 6 reach stackers with lifting capacity up to 45 tons
- 2 trains can be handled at the same time
- On-site customs office
- Handling of swap bodies and semi - trailers
- Operates 24/7/365

## ZALAEGERSZEG

to come...2023



- Size: 150,000 m<sup>2</sup>
- Intermodal HUB terminal & logistics center in western Hungary for the Adriatic Corridor (Koper, Trieste, Rijeka)
- Daily connection to Hamburg, Bremerhaven and the whole METRANS network
- Construction plan:
  - phase 1 – in operation by the end of 2023
  - phase 2 – in operation by the end of 2025

## ZLIN

since 1994



- Size: 68,600 m<sup>2</sup>
- Storage capacity: 1,300 TEU full + 1,200 TEU empty
- 3 sidings of 550 m, 1 siding of 400 m, 2 sidings of 350 m, 2 sidings of 300 m
- 4 reach stackers (45t), 4 reach stackers (12t)
- On-site customs office
- Repair facility for containers
- Operates 24/7/365

## PLZEN

since 2007



- Size: 50,000 m<sup>2</sup>
- Storage capacity: 1,300 TEU full + 1,200 TEU empty
- 3 sidings of 400 m
- 2 portal cranes, 2 reach stackers (10/12t)
- On-site customs office
- Repair facility for containers
- Operates 24/7/365

## KOSICE

since 2010



- Size: 46,500 m<sup>2</sup>
- Storage capacity: 3,000 TEU full + 3,000 TEU empty
- 2 sidings of 550 m
- 3 reach stackers (45t), 2 reach stackers (12t)
- On-site customs office
- Repair facility for containers
- Operates 24/7/365

## OSTRAVA

since 2011



- Size: 40,000 m<sup>2</sup> plus 60,000 m<sup>2</sup> depot
- Storage capacity: 1,200 TEU full + 5,000 TEU empty
- 2 sidings of 250 m
- 1 portal crane, 4 reach stackers (45t), 3 reach stackers (12t)
- On-site customs office
- Repair facility for containers
- Operates 24/7/365

## KREMS AN DER DONAU

since 2012



- Size: 40,000 m<sup>2</sup>
- Storage capacity: 1,500 TEU full + 2,000 TEU empty
- 4 sidings of 680 m
- 3 reach stackers (45t), 2 reach stackers (12t)
- On-site customs office
- Repair facility for containers

## USTI NAD LABEM

since 2015



- Size: 25,500 m<sup>2</sup>
- Storage capacity: 1,500 TEU full + 2,000 TEU empty
- 1 siding of 185 m, 2 sidings of 160 m
- 1 portal crane, 3 reach stackers (45t), 2 reach stackers (12t)
- On-site customs office
- Repair facility for containers
- Operates 24/7/365

## WARSZAWA (Pruszkow)

since 1993



- Size: 57,000 m<sup>2</sup>
- 2 sidings of 600 m, 1 siding of 350 m
- 3 reach stackers with lifting capacity up to 45 tons
- Handling of swap bodies and semi-trailers
- On-site customs office

## DABROWA GORNICZA

since 2010



- Size: 170,000 m<sup>2</sup>
- 2 sidings of 625 m, 1 siding of 600 m, 1 siding of 500 m
- 3 reach stackers with lifting capacity up to 45 tons, 1 reach stackers with lifting capacity up to 12 tons
- Reefer plugs – PTI incl. small repairs
- Handling of swap bodies
- On-site customs office

## WROCLAW (Katy Wroclawskie)

since 2015



- Size: 65,000 m<sup>2</sup>
- 2 sidings of 600 m
- 1 gantry crane, 5 reach stackers (45t)
- Reefer plugs – PTI incl. small repairs
- Handling of swap bodies and semi-trailers
- On-site customs office

## ZILINA

*operated by TIP ZILINA*



- Concession since 2019
- Size: 150,000 m<sup>2</sup>
- 2 sidings of 750 m
- 2 portal cranes, 2 reach stackers (12t)
- Repair facility for containers
- Handling of swap bodies and semi - trailers

## BERLIN KOWU

*since 2019*



- Size: 20,000 m<sup>2</sup>
- 1 siding of 800 m, 3 sidings of 500 m
- 1 crane, 1 reach stackers (40t)
- Reefer plugs – PTI incl. small repairs
- Depot for empty containers–capacity: 2,000 TEU
- On-site customs office

## GERNSHEIM

*since 2020*



- Size: 54,000 m<sup>2</sup>
- 2 sidings of 340 m
- 1 gantry crane, 1 slewing jib crane, 2 reach stackers (45t)
- Truck capacity: 30 trucks (long term sub-contractors)

## Dyko Rail Repair Shop (Kolin, Czech Republic)



- Established in 1940
- Acquired by METRANS in 2007
- Licensed to repair Siemens and Bombardier locomotives
- Repairs:
  - container wagons
  - running gear for passenger carriages
  - locomotives and wheelsets

## Rail & Reachstacker Repair Shop (Dunajska Streda, Slovak Republic)



- Established in 2019
- Repairs:
  - container wagons
  - locomotives
  - reach stackers

# HHLA Pure - CO<sub>2</sub>-neutral container handling & transport



With the HHLA Pure product METRANS offers our clients a CO<sub>2</sub>-free handling and also transport, and thus, together we make a real contribution towards climate protection.

## HHLA and METRANS course of action

- Modern hybrid and electric locomotives
- Electrification at the port container terminal with electric storage crane system, electric vehicles

NEW logo from 1.7.2021





# How does the CO<sub>2</sub> compensation work?

*Compensation is still worthwhile,  
even when large distance are involved*



- Burning fossil fuels releases CO<sub>2</sub> emissions into the atmosphere.
- As the atmosphere has no borders, it makes no difference where in the world the CO<sub>2</sub> emissions are produced; the impact is the same the world over.
- **THE SOLUTIONS** – with the course of action we solve CO<sub>2</sub> emissions – for remaining emission we buy Certificates for environmental projects.



# Our Product: Green Handling & Green Transport

*Certified CO<sub>2</sub> neutrality for transportation  
from the port all the way to Europe's hinterland*



- Handling at the HHLA container terminal with widely electrified processes
- Transport and collection via METRANS with CO<sub>2</sub> optimised trains and wagons
- Any currently unavoidable CO<sub>2</sub> emissions are offset through certified development projects to the highest international standard (Gold)
- **Process:**
  - **Certification of HHLA Pure TÜV Nord**
  - **Receiving customer-specific transport (volume/route)**
  - **Offsetting and monitoring by TÜV Nord**
- Confirmation of climate-neutral transports for customers



THANK YOU  
FOR YOUR  
ATTENTION!



**METRANS**

**METRANS**

**METRANS**

