

**Elkins High School | Department of English | Distance Learning**

**English 9 | Ms. Summers | Snow Packets #11-16**

<b>Readings</b>	<p><i>The Maze Runner</i> by James Dashner (2009)</p> <ul style="list-style-type: none"><li>• PDF copy attached</li><li>• Physical copy available at EHS</li></ul>
<b>Assignments</b>	<p>Day #11 - April 2nd</p> <ol style="list-style-type: none"><li>1) Complete the opinionnaire worksheet</li><li>2) Complete the Values Hierarchy worksheet</li><li>3) Review the Glader Slang vocabulary<ul style="list-style-type: none"><li>• Note: worksheets and questions can be found below</li></ul></li></ol> <p>Day #12 - April 3rd</p> <p>Read chapters 1, 2, and 3 and answer the questions for those chapters</p> <p>Day #13 - April 6th</p> <p>Read chapters 4, 5, and 6 and answer the questions for those chapters</p> <p>Day #14 - April 7th</p> <p>Read chapters 7 and 8 and answer the questions for those chapters</p> <p>Day #15 - April 8th</p> <p>Complete the Grievors Warning Poster assignment:</p> <ul style="list-style-type: none"><li>• Your poster should be informative and eye-catching! Include only the essential information; posters usually do not contain detailed writing. Be sure to give <u>specific warnings</u> about these creatures. Think carefully about your color scheme and layout for the poster! <u>Add illustrations</u> to your poster for effect!</li><li>• Note: You are allowed to do this online or by hand. You can follow the directions below for uploading a photo/document to Office 365. Either way you do it, make sure your poster looks good and is easy to read!</li></ul> <p>Day #16 – April 9th</p> <p>Read chapters 9, 10, and 11 and answer the questions for those chapters</p>
<b>Where to do the work</b>	<p><b>All assignments for snow packets #11-16 (and on) should be completed in your English 9 folder on OFFICE 365!!! I will NOT accept assignments through email or Live Grades.</b></p>

**Remember to ALWAYS open the English 9 folder BEFORE opening a document or before uploading any files.**

To create/save documents in your English 9 folder:

1. Login to Office 365. Message me if you can't remember your login.
2. Click on One Drive (the cloud icon)
3. Click on your English 9 folder
4. Click 'New+' then 'Word Document'
5. Change the title to reflect the assignment you're working on

If you've already typed your assignments on regular Word on your computer:

1. Login to Office 365
2. Click on One Drive
3. Click on your English 9 folder
4. Click 'Upload' then 'files' and find the document(s) on your computer
5. Change the title to reflect the assignment you're working on

If you've handwritten or drawn your assignments:

1. Download the One Drive app on your phone
2. Open the app and login
3. Click on your English 9 folder
4. Click the camera icon at the bottom
5. Take photos of your handwritten assignments and submit
6. Make sure you change the titles to reflect the assignment

OR

1. Take photos of your handwritten assignments on your phone's camera
2. Download the One Drive app on your phone
3. Open the app and login
4. Click on your English 9 folder
5. Click the + at the top, click 'Upload' then 'Photos and Videos' and find the pictures on your phone and submit
6. Make sure you change the titles to reflect the assignment

**WV  
Content  
Standards**

- ELA.9.1: Cite strong and thorough textual evidence to support analysis of what the literary text says explicitly as well as inferences drawn from the literary text.
- ELA.9.2: Determine a theme or central idea of a literary text and analyze in detail its development over the course of the literary text, including how it emerges and is shaped and refined by specific details; provide an objective summary of the literary text.

	<ul style="list-style-type: none"> <li>• ELA.9.3: Analyze how complex characters (e.g., those with multiple or conflicting motivations) develop over the course of a literary text, interact with other characters, and advance the plot or develop the theme.</li> <li>• ELA.9.23: Produce clear and coherent writing in which the development, organization, and style are appropriate to task, purpose, and audience.</li> <li>• ELA.9.25: Use technology, including the Internet, to produce, publish, and update individual or shared writing products, taking advantage of technology’s capacity to link to other information and to display information flexibly and dynamically.</li> <li>• ELA.9.28: Draw evidence from literary or informational texts to support analysis, reflection, and research.</li> </ul>
<b>Learning Goals</b>	Students will read the novel <i>The Maze Runner</i> by James Dashner. In doing so, students will improve their reading and analytical skills by identifying elements of dystopian fiction, studying the evolution of the characters’ goals and motivations throughout the novel, and discussing the impact the events in the novel have on the plot.

**These assignments have been sent on Live Grades,  
have been uploaded to Teams on Office 365,  
and are on the EHS Website under the Snow  
Packets tab!**

# The Maze Runner

## opinionnaire

Decide whether you agree, disagree, or are neutral to the following statements.  
Then, write one sentence explaining your position.

Statement	Agree	Disagree	Neutral	Explanation
It's okay to spy on people.				
Society would fail without rules.				
It's important to know who you are.				
Confining people makes them want to be free more.				
Every group needs a leader.				
Freedom is worth dying for.				
Friendship can help people achieve great things.				
Manipulating people is okay as long as it's for the greater good.				
Society relies too heavily on technology.				

All these statements are themes you will see throughout the novel *The Maze Runner* by James Dashner.

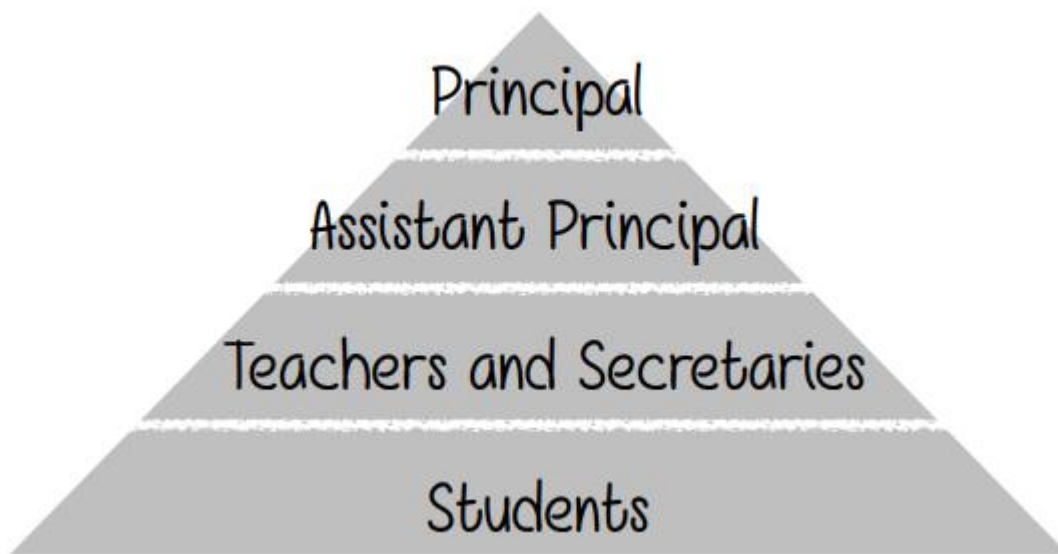
# The Maze Runner

## Values Hierarchy

A hierarchy is a formally ranked group of items, people, or ideas. You find hierarchies all the time in the form of chains of command. For example, a person could explain the hierarchy of power (from least to greatest) within a school as follows:

Students → Teachers, Counselors, and Secretaries → Assistant Principal → Principal

The same hierarchy visually represented would look like this:



While it's not necessarily your choice, as students you do have the least amount of power or control over matters such as punishment, rules, amounts of homework, and things of that nature. Above students are teachers, counselors, and secretaries since those people are often seen as authority figures due to their age, education, and experience. Above that group is the assistant principal who is only below one person: the principal him/herself.

Now that you hopefully have a better understanding of what hierarchies are all about, here is your task: **Create a hierarchy of values for a perfect society (a value is a standard of behavior that is important or beneficial). You will choose the six most important ideas or values that a society should be built around. You will then rank those six values and put them in the form of a hierarchy pyramid. Additionally, for each of the six values, write an explanation of your reasoning for why each value is important and why it is where it is within your hierarchy of values pyramid.**

Possible values you could include: cooperation, trust, fairness, safety, power, freedom, justice, respect, understanding, determination, equality, adaptability, individuality, innovation, competitiveness, and compassion.

# The Maze Runner

## Glader Slang

- Klunk - means "poop" or "crap"
- Shank - means "friend" or "fellow"
- Shuck - an expletive or curse word used to bring attention to one's annoyance or frustration
- Slim it - means "calm down" or "shut it"
- Slinthead - a derogatory term used mostly by others when one makes a mistake that involves repercussions
- Greenbean/Greenie - the newest arrival to the Glade
- Newbie - a newcomer in the Glade. Can refer to a Greenie, or anyone else relatively new
- Good That - said when a Glader agrees with someone or something
- Dong - means "feces"; also used as a derogatory term
- Jacked - describing a person who is messed up in the head
- Bloody - commonly used as "bloody hell" by Newt. An expression of strong emotion

# The Maze Runner

## Chapter Questions

**Directions: Answer each set of questions after reading that section of chapters. Remember to write your answers in complete sentences. You should type your answers in a word document that is saved in your English 9 folder on Office 365.**

### Chapters 1-3

- 1) Where is Thomas at the beginning of the novel?
- 2) What words will Thomas never forget? Why?
- 3) Who is Alby? Who is Chuck and why does Thomas instantly like him?
- 4) Why do you think the boys are so reluctant to give Thomas any answers?
- 5) What's a beetle blade?
- 6) What does Thomas discover in the wooden building?
- 7) What surprising information does Gally share with Thomas?

### Chapters 4-6

- 1) How many doors are there to the Glade and what happens to them every evening?
- 2) Why do you think Gally picks on Thomas? Do you consider Gally a bully? Explain.
- 3) What does Thomas realize when he wakes up?
- 4) What goal does Thomas set for himself?
- 5) Describe a Griever.
- 6) According to Newt, what have all the boys been sent to the Glade for?

### Chapters 7-8

- 1) What's the Box and why is it important?
- 2) Why does the thought of the Glade having a graveyard disturb Thomas?
- 3) What is the Number One Rule in the Glade?
- 4) What happened when the boys tried to send various items down in the Box and/or the hole? Why did they stop trying?
- 5) What does the alarm signify and why is everyone surprised?
- 6) Why do you think the girl's message causes fear and anxiety among the Gladers?

### Chapters 9-11

- 1) What is a Gathering and why do they call one?
- 2) What do the runners do when they return from the Maze?
- 3) What does Thomas think he sees on the back of the beetle blade?
- 4) Who attacks Thomas and where was Thomas when the attack happened?
- 5) What happened to Ben after he attacked Thomas?
- 6) Thomas's first job is to work for the Slicers. What's a slicer and what are they in charge of?