

**2
0
1
6**

**H
e
r
d**

**S
i
r
e
s**

**Cattlemen
Serving Cattlemen**



**Your source
for the most
profitable AI sires
in the industry!**



The most *Profitable Sires* in the beef business...



Prophet

\$16,342 \$Profit, Top 0.1%.



Visionary

\$16,921 \$Profit, Top 0.1%.



Trinity

\$15,366 \$Profit, Top 0.1%.



Big Gene

\$12,130 \$Profit, Top 3%.



***No Other Semen Company
Uses the Bulls they Market!***

The Elite Sires on the following pages represent many years of a disciplined commitment to breeding more profitable cattle. Through the enthusiastic efforts of many people both from within and around our program, we have been on a mission to build and multiply genetics that will improve the financial health of our customers. It is working...

~ Lee Leachman

Plus a rep network of *Cattlemen Serving Cattlemen...*



Equals your
Financial Success!

The Rep Team

As we strive to identify the best genetics in the industry, we are compelled to have the same focus when it comes to the people that represent our company and serve our customers. We have purposely recruited experienced cattlemen that know the cattle business because they are in the business. Plus, they know our system and the products and services we provide. Our goal is to offer our customers the AI use of some of the most profitable bulls in the industry, represented by some of the very best cattlemen in the business. Check with the representative in your area for knowledgeable, straight forward information on our 2016 Elite Bull lineup.

Just as we are not your typical semen company, these are not your typical semen salesmen. The following cowmen represent the Elite Semen Cooperative and Leachman Cattle of Colorado.



Aaron Rasmussen, Hay Springs, NE, represents the western Nebraska area. We are pleased to have Aaron come aboard as he already has considerable knowledge of our program and is using LCoC genetics in his seedstock herd as a Cooperator. We would highly recommend anyone in his area who is interested in AI to get with

Aaron and make use of his many years of experience in custom breeding, synchronization and semen selection. He has excellent portable equipment, a good crew and lots of experience AI'ing large numbers of cattle. Aaron is also an LCoC Buyer Rep.

Contact Aaron-

Cell: 308-760-5695 • Email: aaron@leachman.com



Dar Giess, Pierz, MN, is our representative for the northern plains of Minnesota. He is also an active LCoC Buyers Rep. Dar knows the Leachman system very well as he not only markets LCoC bulls and semen, but he helps develop and use our genetics through his Cooperator Seedstock program. Dar's background includes an animal science education at Oklahoma State University,

a lifetime in the cattle and AI business, plus service within the industry at the state and national level. He is a past President of the Minnesota State Cattlemen's Association. Dar runs cattle in both Minnesota and South Dakota and is a Reputation Feeder Cattle representative. Count on Dar for knowledgeable seasoned advice for all your cattle breeding needs whether it is semen, bulls or females.

Contact Dar-

Cell: 320-249-2130 • Email: dar@verifiedbeef.net



Zach Meinders, Buffalo Center, IA, is our representative for northern Iowa and parts of the northern plains region including South Dakota. Zach graduated from South Dakota State University and is now back on his family's operation which includes both seedstock and commercial cattle and a feeding enterprise. They raise purebred

Black Angus, Red Angus, Charolais and Stabilizers for the LCoC Cooperator Program. They utilize AI and ET extensively in their breeding program. You can count on Zach to provide you with the very best information on our bulls and programs. He also provides custom AI and synchronization services.

Contact Zach-

Cell: 515-320-3835 • Email: meinders2@hotmail.com



Clint Holland, Lacygne, KS, is our representative for eastern Kansas and western Missouri. He is active in all segments of the cattle industry from cow/calf to stocker to feeder and is using Leachman genetics in his commercial operation. He has been custom AI'ing cows for several years and provides complete

AI breeding services for his region. Clint's background also includes earning a degree in Beef Cattle Management from Fort Hays State University which included an internship with Leachman Cattle of Colorado. Clint is also an LCoC Buyer Rep.

Contact Clint-

Cell: 913-549-8700 • Email: cwholland01@gmail.com

Our Representatives are Cattlemen!



Bruce Staton, Magazine, AR, has been an LCoC Bull Buyer Representative for over 10 years. He is a 3rd generation cattleman from northwest Arkansas where he grew up in the livestock industry. Bruce knows the Leachman program very well not only as a buyer rep., but also as a breeder as he uses Leachman genetics extensively in both his

LCoC Cooperator seedstock herd and in his commercial cow/calf operation. Bruce has always been a progressive cattle breeder, and coordinates our LCoC Ozark bull & heifer sales. Arkansas and eastern states cattlemen, you can count on Bruce to have the experience to service all your semen, bull and replacement female needs.

Contact Bruce-

Cell: 479-675-6531 • Email: lazysranch@magtel.com



Jeff Liston, Lovilia, IA, services southern Iowa and northern Missouri for the Leachman Semen Cooperative. He has been in the Angus seedstock business for nearly 40 years and has always been a strong promoter of good data and the use of all economic tools available in the selection process. Most notable are his efforts working on

feed efficiency values. Jeff and his customers are seeing notable reduced feed intake in their herds as feed efficiency is stacked in their herd pedigrees. His years of experience and commitment to excellence in breeding superior cattle assures you of having a competent representative to provide all your semen needs.

Contact Jeff-

Cell: 641-891-1270 • Email: jliston@iowatelecom.net



Rocky Forseth is our representative for Montana. He grew up on a cow-calf operation in Montana and is an Animal Science and Livestock Management graduate from Montana State University. Rocky has extensive ET and AI training and as scheduling allows, can provide experienced custom AI services to his semen customers. In addition, Rocky is a Superior Livestock representative and would be glad to help market your calves. He is currently a sales and customer service rep for LCoC which allows him the opportunity to know our AI sires and their progeny very well. He has an extensive knowledge of our program and you can count on him to provide you with the latest information on our lineup, program options and find the right sires to fit your program.

Contact Rocky-

Cell: 406-590-7984 • Email: rocky@leachman.com



Bob Wilson, Ontario, is our Semen Representative for Canada. Bob and his nephew Joe Swindlehurst run a seedstock Stabilizer herd in which they have been using high \$Profit Leachman sires for several years. Their fall calving herd is also an LCoC Seedstock Cooperator herd. They routinely use timed AI in their breeding programs with

good results and can help recommend synchronization protocol options. Bob is always looking for ways to improve the performance of his cattle. His herd has been enrolled in the data collection and analysis services offered by BIO for over 20 years and Bob has worked closely with Brian Pogue on breeding and selection decisions. This in combination with the implementation of Leachman's top AI sires has resulted in significant improvements in their herd's efficiency, productivity and profitability. Bob's involvement in all of these programs allow him to be very well informed and knowledgeable about which sires will work best for you.

Contact Bob-

Cell: 519-831-0962 • Email: bob@leachman.com



Kurt Schenkel, Freeport, OH, will be a familiar name to many of you that have been Leachman customers for a while as Kurt was the LCoC herdsman at Wellington for several years before moving back home to Ohio to continue his career in the cattle business. His Ohio roots also include graduating from Ohio State University with

a degree in Animal Science. Kurt knows and understands the Leachman system very well and like many members of our Semen Rep. Team, he utilizes Leachman genetics in the programs that he owns and operates. You can count on Kurt to give you valuable and accurate information on Leachman Herd Sires because he knows them and uses them.

Contact Kurt-

Cell: 330-234-4576 • Email: kurt@leachman.com



The Rep Team



Rick Collins, Calistoga, CA, has been working with cow/calf operators in California for the past 25 years. Rick and his family also operate their own commercial herd along with pasturing outside cattle. In addition to his involvement in the cattle industry Rick is an accomplished horseman and trains cutting horses. We first met

Rick through his involvement with our friends Mike and Zech Browning, owners of Leachman Cattle Top Line Division, Middletown, CA. His experience with the Brownings, coupled with a lifetime work on western ranches assures you that Rick understands the practical side of the livestock business.

Contact Rick –

Cell: 707-803-3334 • Email: collinsxlivestock@gmail.com



Jerry Kusser, Highmore, SD, has been a long-time friend and customer at LCoC. His family ranch, the K Lazy K, has a reputation for producing some of the top commercial Angus cattle in the country. They are strong believers in the power of AI to create a superior cowherd. They have been AI'ing all their heifers as well their mature cowherd

for the past 20 years. Jerry and his family have also been leaders in the value of selecting for feed efficiency, carcass quality and \$Profit. The K Lazy K steers became the first test herd validation of feed efficiency data for LCoC. Jerry is a very knowledgeable cattleman and he would be glad to visit with you about your breeding decisions this year.

Contact Jerry -

Cell: 605-870-1790 • Email: klazykcattle@gmail.com



Jeff Coelho, Hermiston, OR, and his wife Amy own Northwest Livestock Commission LLC in Hermiston. He has been in the ranching and cattle industry his entire life. Jeff and Amy are actively involved in the sport of rodeo, and both qualifying for the National Finals Rodeo, her in 2002, and him in 1999 in the calf roping. They run their

own cowherd on a ranch leased from his family in Longcreek, Oregon. He has also worked for one of the most reputable ranches in Oregon, the Double M Ranch in Stanfield. Jeff will be having an LCoC bull sale this spring at Northwest Livestock. Please contact Jeff, not only for your semen and bull needs, but he would also be glad to help you market your calves as well.

Contact Jeff –

Cell: 541-561-4267 • Email: jeffamycoelho@aol.com



Todd Stegall, Colusa, CA, was raised in the beef cattle industry in California where his family owns and operates a large scale cow/calf operation. Todd recognized at a young age that he had a passion for beef cattle and started his own herd of registered Red Angus cattle which eventually became an LCoC cooperator herd and still

is today. Being a cooperator gives him first-hand knowledge of what the LCoC system/genetics can do. Todd also served as an intern with LCoC this past spring and is a 2014 graduate of California State University of Chico with a Degree in Animal Science. Todd is a very skilled AI technician and would be happy to offer arm service to his semen customers.

Contact Todd -

Cell: 530-713-8755 • Email: tmstegall@gmail.com



Lucas Grubl, Sturgis, SD, represents the western South Dakota region. Lucas is a 6th generation member of his family ranching operation, the Grubl Alkali Ranch. He and his family have been long-time Leachman cooperators and have raised and/or own several of the herd sires featured in the Elite Semen Cooperative. Lucas graduated from Mitchell

Technical Institute with an Animal Science degree in Ag Technology. He has a working, day-to-day knowledge of our system, our cattle and herd sires. He is a great addition to our team and you'll find his knowledge of these elite herd sires very helpful.

Contact Lucas -

Cell: 605-206-1043 • Email: lucas.grubl@gmail.com



Mike Hughes, Sonoita, AZ, joins our group this year and he sure enough fits our Company's description that our Reps are "Cattlemen Serving Cattlemen". Mike grew up on one of the largest ranches in Arizona, attended the University of Arizona and has a lifetime of experience managing operations in the region. He has been instrumental in

designing and building profitable EPD based breeding programs on several large ranches and like many of us, has used Leachman genetics before joining our team. He also has experience feeding and marketing "value-added" calves. Mike and his wife Beth also own Arizona Ranch Connection. We welcome Mike into our program.

Contact Mike -

Cell: 520-255-3144 • Email: mike@azranchconnection.com

Elite \$Profit™ Knowledge



Garrett Rolland, Norton, KS, serves as the LCoC Cooperator and Representative Coordinator. He has had a long-time working relationship with Leachman Cattle dating back to the Montana Sales, through working as the LCoC herdsman and now serving as a bull and semen rep. Garrett earned a Degree in Beef

Cattle Management from Fort Hays State University where he served internships with LCoC and at the R.A. Brown Ranch. His involvement and knowledge of the program and AI sires makes him a valuable representative for the Elite Semen Cooperative. Along with his responsibilities with LCoC, Garrett serves a major role in his family's cattle operation in northwest Kansas. Cattlemen in Kansas contact Garrett for any of your bull or semen needs.

Contact Garrett –

Cell: 785-623-1489 • Email: garrett@leachman.com



Sam Rempe, Superior, NE, serves as the LCoC Semen Cooperative Manager. He has helped build the Division from the ground up and today coordinates all of the day-to-day activities. Sam is also actively involved with his family Cooperator Seedstock operation where he manages the breeding program which includes extensive AI and ET work.

His background includes graduating from FHSU with a degree in Beef Cattle Management and an internship with LCoC. Sam has a strong working knowledge of breeds, bulls, bloodlines and an in depth understanding of the Leachman breeding program. He also provides experienced custom AI and synchronization services. Sam is always working on the most up to date information on new herd bulls and the latest progeny test data. Sam not only services central and eastern Nebraska but is your contact person if you don't have a representative in your area.

Contact Sam –

Cell: 970-444-BULL (2855) • Email: sam@leachman.com

Lee Leachman, LCoC Owner/Manager

Cell: 970-219-8519

Email: lee@leachman.com

Gary Rolland, Semen Cooperative Supervisor

Cell: 785-623-8828

Email: rollandrco@ruraltel.net

Sam Rempe, Semen Cooperative Manager

Cell: 402-879-5034

Email: sam@leachman.com

Garrett Rolland, Rep Coordinator

Cell: 785-623-1489

Email: garrett@leachman.com



Ryan Peterson, Wellington, CO, wears many hats – very well – for the Leachman organization as he is the Director of Sales for LCoC, spends a lot of time working with the young bulls on test, manages the herd sires and is also your Semen Representative for Colorado. Ryan's background includes growing up on a family run commercial cow-

calf & feedlot operation in southwest Michigan. He was heavily involved in FFA serving both as a State and National Officer. Ryan earned a degree in Agribusiness from Michigan State University and a Master's Degree in Animal Science from Colorado State University. Ryan has been with LCoC since 2010 and needless to say, he really knows these bulls.

Contact Ryan -

Cell: 970-672-6828 • Email: ryan@leachman.com



Kevin Unger, Oberlin, KS, serves as our Retained Ownership and Feedlot Services Coordinator. He has a unique background in the cattle business as he managed Decatur County Feed Yard for many years as well as running both a seedstock and commercial program of his own. Because of these experiences, Kevin has tremendous perspective

on all sectors of this industry and is a great asset to helping all of us make the best use of superior genetics. He also serves as the Resource Manager for Lincoln Co. Feed Yard, North Platte, NE. Contact Kevin for opportunities to feed and market LCoC sired cattle.

Contact Kevin -

Cell: 785-470-1131 • Email: kevin@leachman.com



JOIN US!

Semen Cooperative Supervisor **Gary Rolland** would like to extend an invitation to anyone who is passionate about the cattle business and has an interest in becoming an LCoC Semen Cooperative Representative to contact him. Knowledge of the business, and willingness to learn the in's and out's of this comprehensive system are required.

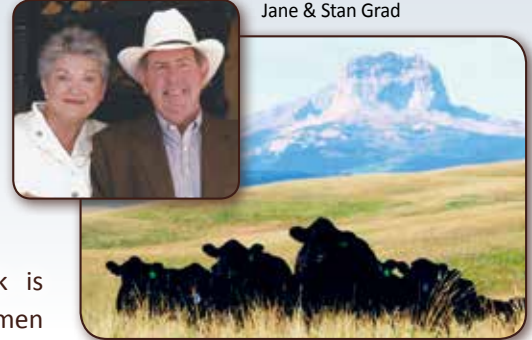
If you are interested in joining our Semen Cooperative team, please contact Gary at

Cell: 785-623-8828 • Email: rollandrco@ruraltel.net

Customers Span the Globe

Wherever progressive cattlemen are improving beef cattle genetics, you will find Leachman \$Profit genetics at work....

Stan Grad and company have been buying Leachman bulls since the 80's. In 2012, they purchased both the high selling Red Angus bull and one of the best Angus herd sire prospects. Soderglen Ranches, based in Airdrie, Alberta, markets some of the best composite bulls in Canada. Their recent sale offered 244 bulls and averaged CAN\$6,200! www.soderglen.com



Jane & Stan Grad

Soderglen composite cows in southern Alberta.



Tom Lawson and Lee Leachman in Victoria, Australia.

Tom Lawson of Paringa Livestock is one of the most progressive cattlemen in Australia. His family has a long tradition of raising performance tested

Angus cattle. Tom, always eager to make his own path, started a Red Angus program and then a herd of Charolais. He has since added Stabilizers to his offering. Many of the highest feed efficiency and profit index bulls in Australia come from the Paringa herd! www.paringalivestock.com.au



Buyers inspecting Paringa Stabilizer bulls.

The Beef Improvement Group in the United Kingdom markets Stabiliser cattle. In fact, they own the composite breed in the UK. They originally came to the US in the late 90's to find the best maternal genetics options for beef producers in the UK. After visiting Leachman Cattle and Clay Center, they decided that our Stabilizer would be the best option. Via large scale importation of cutting edge genetics, they are fuelling rapid genetic improvement in their herds. They recently installed a GrowSafe unit to measure feed intake.



David Thirlwell (manager of the Givendale Stabiliser herd), Lee Leachman, and Richard Fuller (Director and founder of the UK Stabiliser program).

Lee is now serving on the board for the Stabiliser Cattle Company in the UK. On a recent visit, he was able to speak to dozens of farmers using Stabilisers. Their overwhelmingly positive response to the breed centers on the maternal strength and calving ease of the breed. Due to their superior profitability for UK cow/calf producers, the breed is now the fastest growing in the UK. LCoC will be adding records from over 9,000 registered

Stabilisers in the UK to our database for \$Profit analysis. Over 48,000 Stabiliser and Stabiliser cross calves have been recorded in their UK program to date. www.bigbeef.co.uk



Maternal efficiency is their goal.



Richard Fuller directs the Stabiliser program in the UK.

THE STABILIZER™ BREED

The Stabilizer breed is a multi-breed composite developed by Leachman Cattle Company. The breed is based on research done by the United States Department of Agriculture (USDA) at their Animal Research Service (ARS) at the Meat Animal Research Center (MARC), at Clay Center, Nebraska. The Stabilizer breed is a blend of British and Continental inputs including: Angus, Red Angus, Simmental, Gelbvieh & South Devon. The Breed combines the fleshing ability, marbling, and moderate size of the British breeds with the muscle, milk, and growth of the Continental breeds. As a four breed composite, the Stabilizer retains 75% of the F1 hybrid vigor and thus allows producers to crossbreed with simplicity.

The MARC (Meat Animal Research Center) started a project in 1973 called the Germ Plasm Utilization (GPU) project. Their research showed several advantages that come from crossbreeding. Most importantly they showed that hybrid vigor has a large impact on beef cattle productivity. The research demonstrated an 8% improvement in weaning weight when a purebred cow is mated to a bull of a different breed. The research also showed that crossbred cows are far more productive than purebred cows. The benefits came in multiple areas including more milk production, better body condition, faster re-breeding, and a longer productive lifetime.

In total, the crossbred cows weaned 23% more weight than did purebred cows.

Historically, crossbreeding requires the use of complicated mating systems to keep the hybrid vigor effect. Scientists designed rotational systems using three breeds. However, such systems were too complicated. Furthermore, they resulted in wide swings in breed composition, and prevented breeders from having a uniform, well adapted herd. As an alternative, the researchers at MARC developed multi-breed composites. Their study confirmed that such composite breeds retain hybrid vigor in proportion to the number of breeds used – using more breeds generates more retention of hybrid vigor. The Stabilizer (Marc II composite), with four breeds, retains 75% of the F1 hybrid vigor. **Thus, breeders can breed composite bulls to composite females and keep most of the available hybrid vigor without the complexity and loss of uniformity associated with crossbreeding.**



Since 1988, Leachman has marketed over 12,000 Stabilizer bulls. Customers from across the United States are successfully utilizing Stabilizers to improve their bottom line. The Stabilizer breed is also popular and growing in the UK, Australia, New Zealand, and in South America.



The Stabilizer has quickly become the most widespread composite breed in the world's temperate regions.



Good bulls run in our family!
Call (970) 444-BULL to Order Semen Today



Leachman Elite SimAngus® Stabilizers

Hooks Trinity 9T

Calving Ease

High Accuracy



Leachman \$Profit™
\$15,366
 \$Ranch \$53 • \$Feeder \$118
 Feed:Gain Feed Intake
-0.17 -7

Leachman ABCs as of 12/18/15	BW	WW	YW	MILK	SC	HT	MAT WT	REA	IMF	CAR WT	BF
	-3.1	52	87	25	0.16	0.57	-6	1.19	0.23	843	-0.01

Nichols Legacy G151
Sire: Hook's Shear Force 38K
C&D Tracy
Bon View New Design 878
Dam: Hook's Pearl 22-P
ESJ4

Born: 2/16/07
 Accuracy: HIGH
 Calving Ease: ★★★★★
 Disposition: 3.5
 Homozygous Polled
 Heterozygous Black

ASA#: 2389750 • 3/4 SM 1/4 AN
 \$50/unit
 50+ units \$40
100+ units \$30
100+ units-Free Shipping!
 No mix and match option available with Trinity.

ASA EPDs as of 12/1/15	CE	BW	WW	YW	MCE	Milk	MWW	Doc	CW	YG	Marb	Fat	REA	Shr	API	TI
	23.9	-4.5	71.6	104.6	11.8	19.1	54.8	11.8	24.7	-0.33	0.39	-0.023	1.06	-0.39	185.6	84.5

The Trinity legend continues! Rarely does a sire exceed all expectations once he is proven. Trinity progeny have been tested extensively in our system and we have yet to evaluate a trait that he doesn't score well on. No bull is perfect, but Trinity is absolutely our pick for one of the best balanced, well proven, low birth, high \$Profit bulls in the industry. He sires very attractive progeny that have the look of a British animal with the heterosis and performance of a hybrid. Trinity is a legitimate 4-star calving ease bull, yet gives up nothing at weaning with his outstanding birth to yearling spread! Given his 3/4SM-1/4AN breed make up, both seedstock producers and commercial cattlemen with a heavily Angus-influenced cow herd should seriously consider using this proven herd sire. Trinity is siring some of the most profitable herd sires in the industry, and has produced some of the most sound and productive females in the Leachman system.



As with most popular senior herd sires, Trinity's semen production is variable. To date he has produced well enough to offer deeper volume discounts, at least for now. Reserve your order early to ensure current volume pricing.

Owners: Leachman Cattle of Colorado, Hook Farms, & Grubl Ranch.



ASA SimAngus EPD Average as of 12/1/15

CE	BW	WW	YW	MCE	Milk	MWW	CW	YG	Marb	Fat	REA	API	TI
10.4	0.7	60.0	91.8	7.9	21.7	51.6	25.4	-0.20	0.32	-0.034	0.59	120.7	67.00

Call (970) 444-BULL to Order Semen Today!

Trinity Makes Herd Sires!



"Trinity makes herd sires
year after year,
...after year
...after year
...after year!"

2013



Trinity son, **Leachman Prophet J030Z**
Highest selling bull in 2013 & Leachman Cattle
of Colorado's history. He is rapidly becoming a
legendary sire in his own right. *See page 10.*

2011



Trinity son, **Leachman Big Gene L019X**
Highest selling herd sire in 2011
Leachman Spring Sale. *See page 34.*

2012



Trinity son, **Leachman Wide Made X038Y**
Standout herd sire in
2012 Leachman Spring Sale.

2013



Trinity Son, **Leachman Testify D003Z**
2nd highest selling bull behind Prophet in
2013 Leachman Spring Sale. *See page 17.*

2014



Trinity son, **Leachman Cadillac L025A**
Highest selling herd sire in
2014 Leachman Spring Sale.

2015



Trinity son, **Leachman High Country J020B**
High selling bull in 2015 Loma High Altitude
sale. *See page 16.*

2015



Trinity son, **Leachman Encore D060B**
Balanced red calving ease prospect with
typical Trinity style. *See page 36.*

Leachman ABC EPD Average as of 12/18/15

BW	WW	YW	Milk	SC	HT	MWT	REA	IMF	BF	Intake	FG	\$Ranch	\$Feeder	\$Profit™
3.0	38	64	15	0.47	0.73	31.3	0.34	0.18	-0.01	38	0.01	\$24	\$40	\$5,802

Call (970) 444-BULL to Order Semen Today!



Leachman Elite SimAngus® Stabilizers

Leachman Prophet J030Z

Performance



Leachman \$Profit™
\$16,342
 \$Ranch \$53 • \$Feeder \$130
 Feed:Gain Feed Intake
-0.61 -113

Leachman ABCs as of 12/18/15	BW	WW	YW	MILK	SC	HT	MAT WT	REA	IMF	CAR WT	BF
	0.5	63	100	17	0.52	0.41	35	0.98	0.65	827	0

<p><i>Hooks Shear Force 38K</i> Sire: Hooks Trinity 9T <i>Hooks Pearl 22-P</i> <i>DR J ANALYST M250</i> Dam: LCOC ISABEL UG390 <i>EAGLE 1531 ISABEL 2221</i></p>	<p>Born: 2/10/12 Accuracy: MID Calving Ease: Disposition: 4 Homozygous Polled Homozygous Black</p>	<p>ASA#: 2698309 • 62AN-38SM \$35/unit 50+ units \$30 As low as \$25 at 100+ Units 100+ units-Free Shipping!</p>
---	---	--

ASA EPDs as of 12/11/15	CE	BW	WW	YW	MCE	Milk	MWW	Doc	CW	YG	Marb	Fat	REA	Shr	API	TI
	12.8	-0.6	80.6	125.9	7.5	15.4	55.7	12.0	43.7	-0.28	0.68	-0.020	1.13		148.6	89.3

Prophet is our nominee for the most complete power bull in the business! Phenotypically he is appreciated by the most critical seedstock and commercial producers alike. Prophet exhibits tremendous muscling and power while remaining exceptionally sound, moderate framed and well-balanced. He is also a very smooth and fluid mover. On top of that, Prophet is super gentle and has worlds of character & style. Prophet's EPD profile is the poster boy for the \$Profit index's potential to move every economically relevant trait aggressively in the right direction. Just look at his percentile rankings - Top: 26% BW, 1% WW, 1% YW, 1% REA, 1% IMF, 1% FG, 1% Intake, **2% \$Ranch**, **1% \$Feeder** & **0.1% \$Profit**. It is no wonder that the progressive breeders listed below invested so aggressively in this industry leading herd sire.



Maternal Grand Dam



Sire

Owners: Leachman Cattle of Colorado, Hairpin Elite Nucleus, Lincoln County Feed Yard, Hayse Farms, Slovek Ranch, R.A. Brown Ranch, Foster Hay & Cattle, Jones Ranch, Odom Ranch, Rossman Farms, Apex Cattle, & Ralph Huntley & Son.

Prophet represents years of a disciplined approach to multigenerational evaluation. His maternal grand dam is also the maternal grand dam of Protege, who is one of the best proven herd sires in the Angus breed. From that cow came Prophets dam who consistently produces some of the best calves in our system. On top of that we stacked Trinity, who needs no introduction as he is a legend in our program!

ASA SimAngus EPD Average as of 12/1/15

CE	BW	WW	YW	MCE	Milk	MWW	CW	YG	Marb	Fat	REA	API	TI
10.4	0.7	60.0	91.8	7.9	21.7	51.6	25.4	-0.20	0.32	-0.034	0.59	120.7	67.00

Call (970) 444-BULL to Order Semen Today!



The Proof is in the Progeny!

Prophet had a stellar first year of production. He had 47 sons in the 2015 Leachman Spring Sale that sold for an average price of \$10,005!! There is no doubt that this herd sire will be a "go-to" mating in the Leachman breeding plan for years to come. We can't think of any better strategy than to AI your cows to this genetic outlier and clean up with his sons. Below are a few of the highlights from 2015.



Lot 401 - \$14,227 \$Profit, sold for \$21,000.
See page 12 for Semen.



Lot 402 - \$12,960 \$Profit, sold for \$20,000.
See page 12 for Semen.



Lot 404 - \$14,794 \$Profit, sold for \$17,500.



Lot 406 - \$13,451 \$Profit, sold for \$11,000.



Lot 445 - \$14,662 \$Profit, sold for \$14,000.



Lot 511 - \$14,925 \$Profit, sold for \$13,000.

Leachman ABC EPD Average as of 12/18/15

BW	WW	YW	Milk	SC	HT	MWT	REA	IMF	BF	Intake	FG	\$Ranch	\$Feeder	\$Profit™
3.0	38	64	15	0.47	0.73	31.3	0.34	0.18	-0.01	38	0.01	\$24	\$40	\$5,802

Call (970) 444-BULL to Order Semen Today!



Leachman Elite Composite Stabilizers

New Release

Leachman **Apostle** U021B



- Lead off Stabilizer in 2015 Leachman Spring Sale and high selling Prophet Son at \$21,000.
- 5-star phenotype with a super disposition.

Leachman \$Profit™
\$14,227
 \$Ranch \$49 • \$Feeder \$110
 Feed:Gain Feed Intake
-0.31 51

- Above Top 1% for IMF, F:G, \$Feeder & \$Profit!
- Homozygous Black and Polled.

Owners: Leachman Cattle of Colorado, Grubl Ranch, & JT Moreland Farms.

Leachman ABCs as of 12/18/15	BW	WW	YW	MILK	SC	HT	MAT WT	REA	IMF	CAR WT	BF
	-1.1	56	97	23	0.8	0.71	23	0.74	0.64	819	0.01

Hooks Trinity 9T Sire: Leachman Prophet J030Z LCoC Isabel UG390 LCoC Lucky Charm X076T Dam: GRU Stabilizer ZX087 GRU Stabilizer U242	Born: 2/12/14 Accuracy: LOW Calving Ease: ★★ ★ Disposition: 3.5 Homozygous Polled Homozygous Black	58B-40C \$20/unit As low as \$18 at 50+ units 100+ units- Free Shipping!
---	---	---

New Release

Leachman **Rancher** U068B



We think these two sons are just the beginning of Prophet's legacy to come!

- 4-star calving ease prospect, Prophet son.
- Picture perfect phenotype.
- Elite \$Ranch tabulation.
- Homozygous Black and Polled
- Super gentle!
- One of Lee's favorites in 2015!

Leachman \$Profit™
\$12,960
 \$Ranch \$63 • \$Feeder \$78
 Feed:Gain Feed Intake
-0.56 9

Owners: Leachman Cattle of Colorado, Grubl Ranch, & Rod Cook.

Leachman ABCs as of 12/18/15	BW	WW	YW	MILK	SC	HT	MAT WT	REA	IMF	CAR WT	BF
	-2.1	56	99	24	0.6	0.5	9	0.99	0.34	797	0.03

Hooks Trinity 9T Sire: Leachman Prophet J030Z LCoC Isabel UG390 Leachman Fourtune X661U Dam: GRU Stabilizer YX004 GRU Stabilizer WX898	Born: 3/3/14 Accuracy: LOW Calving Ease: ★★ ★★ Disposition: 4 Homozygous Polled Homozygous Black	58B-41C \$20/unit As low as \$18 at 50+ units 100+ units- Free Shipping!
---	---	---

CE Prospect

Leachman ABC EPD Average as of 12/18/15

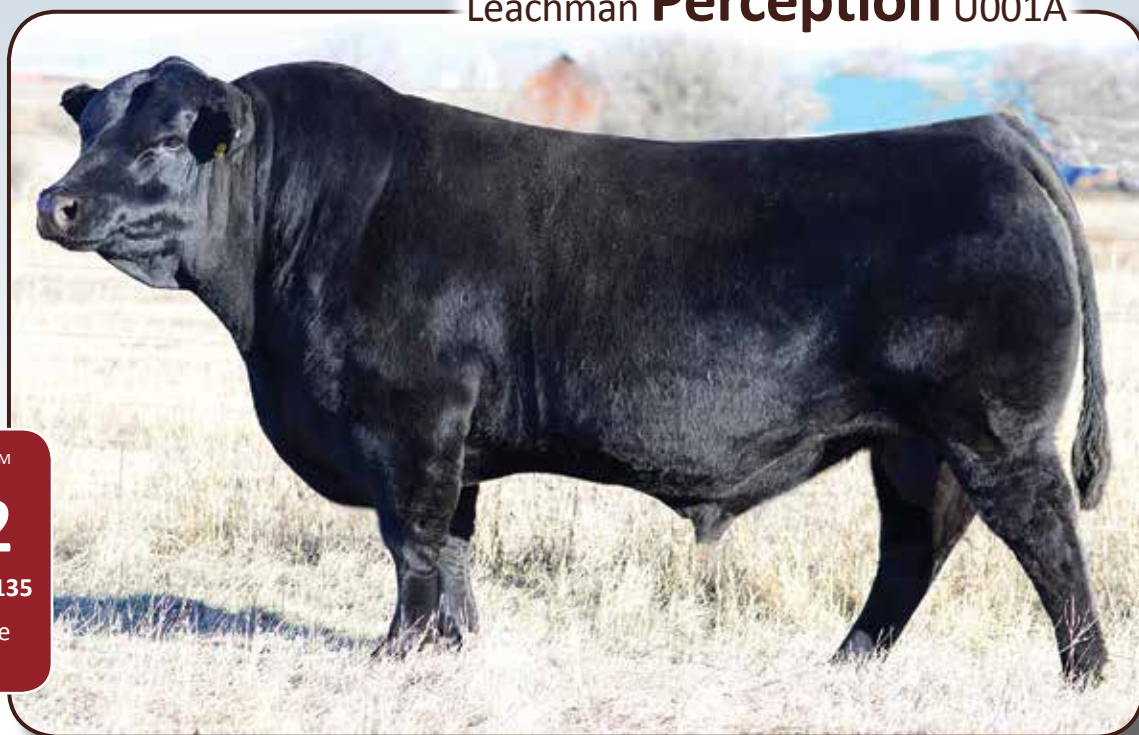
BW	WW	YW	Milk	SC	HT	MWT	REA	IMF	BF	Intake	FG	\$Ranch	\$Feeder	\$Profit™
3.0	38	64	15	0.47	0.73	31.3	0.34	0.18	-0.01	38	0.01	\$24	\$40	\$5,802

Call (970) 444-BULL to Order Semen Today!



Leachman Elite Composite Stabilizer

Leachman **Perception** U001A



Leachman \$Profit™
\$16,402
 \$Ranch \$49 • \$Feeder \$135
 Feed:Gain Feed Intake
-0.40 -160

Leachman ABCs as of 12/18/15	BW	WW	YW	MILK	SC	HT	MAT WT	REA	IMF	CAR WT	BF
	0.8	60	89	28	1.04	0.44	29	0.79	0.5	843	-0.02

<p><i>SydGen C C & 7</i> Sire: TCA Visionary 158 <i>TCA Treasure 0699 601</i> <i>Hooks Shear Force 38K</i> Dam: TES Stabilizer WL018 <i>TES Stabilizer SG450</i></p>	<p>Born: 2/8/13 Accuracy: LOW Calving Ease: Disposition: 4 Homozygous Polled Heterozygous Black</p>	<p>63B-32C \$25/unit As low as \$20 at 50+ units 100+ units-Free Shipping!</p>
---	--	---

Perception is our leading young herd sire when we compare ALL of the data! Here at Leachmans, we look forward to rapidly turning the generations and finding the next great sires, especially ones predicted as profitable as Perception. His intriguing blend of stacking a top Angus sire (Visionary) on a high record Stabilizer dam makes Perception the best of both worlds. His promising portfolio could lead to the next step of profitability in your cow herd. Not only is this herd bull prospect deep-bodied and long-made, he's super gentle and highly profitable.

Just take a look at his percentile ranks – Top: 1% WW, 5% YW, 3% Milk, 4% REA, 1% IMF, 0.1% F:G, 0.1% Intake, and his indexes are **Top 3% \$Ranch at \$49 & Top 0.1% \$Feeder at \$135**. All leading to a \$Profit that ranks higher than the **Top 0.1% at \$16,402!**



Perception's sire, Visionary, has proven to be one of the most feed efficient & high \$Profit Angus herd sires we have tested.

Owners: Leachman Cattle of Colorado, Ken & Karen Knievel, & Grubl Ranch.

Leachman ABC EPD Average as of 12/18/15

BW	WW	YW	Milk	SC	HT	MWT	REA	IMF	BF	Intake	FG	\$Ranch	\$Feeder	\$Profit™
3.0	38	64	15	0.47	0.73	31.3	0.34	0.18	-0.01	38	0.01	\$24	\$40	\$5,802

Call (970) 444-BULL to Order Semen Today!



Leachman Elite Composite Stabilizer

New Release

Performance

Leachman **Doc** X124B



- Big time growth & huge REA, he has that herd bull look!
- Owners describe him as good-doing, hardworking, and easy-going.

Leachman \$Profit™
\$15,334
 \$Ranch \$62 • \$Feeder \$107
 Feed:Gain Feed Intake
-0.42 97

- Top 1% for BW, YW, REA, F:G \$Ranch, \$Feeder & \$Profit.
- Combines power, style AND feed efficiency!

Owners: Leachman Cattle of Colorado, Ken Knievel, Mellema Farms Cattle, Lincoln County Feeders & Galen Weaver.

Leachman ABCs as of 12/18/15	BW	WW	YW	MILK	SC	HT	MAT WT	REA	IMF	CAR WT	BF
	-3.8	54	100	28	0.05	0.78	-2	1.34	0.4	806	0.02

<p>Leachman Porterhouse L094W Sire: Leachman Yosemite X730Y RTH AN/GV 862 Hooks Shear Force 38K Dam: TES Stabilizer TL089 TES Arriaval R3307</p>	<p>Born: 2/13/14 Accuracy: LOW Calving Ease: ★★★★★ Disposition: 4 Heterozygous Polled Homozygous Black</p>	<p>46BN-54C \$20/unit As low as \$18 at 50+ units 100+ units-Free Shipping!</p>
---	---	--

New Release

Performance

Leachman **Captain** J067B



- High selling bull in the 2015 Leachman Spring Sale for \$62,000.
- Long, Deep, Gentle and Smooth.
- Heterozygous black allows producers with red cattle to inject Yosemite genetics into their herd.

Leachman \$Profit™
\$16,823
 \$Ranch \$60 • \$Feeder \$127
 Feed:Gain Feed Intake
-0.27 -34

- Huge spread from birth to yearling!
- Earns three of the absolute highest Profit tabulations in the industry: \$Ranch, \$Feeder & \$Profit.

Owners: Leachman Cattle of Colorado, Triple Creek Ranches, & Grubl Ranch.

Leachman ABCs as of 12/18/15	BW	WW	YW	MILK	SC	HT	MAT WT	REA	IMF	CAR WT	BF
	-2.8	64	105	23	0.53	0.84	24	0.98	0.38	837	0

<p>Leachman Porterhouse L094W Sire: Leachman Yosemite X730Y RTH AN/GV 862 GLS Combination R2 Dam: LAM Miss New Design XL063 LAM New Design RED395</p>	<p>Born: 3/7/14 Accuracy: Low Calving Ease: ★★★★★ Disposition: 3 Heterozygous Polled Heterozygous Black</p>	<p>56B-38C \$25/unit As low as \$23 at 50+ units 100+ units-Free Shipping!</p>
--	--	---



Leachman ABC EPD Average as of 12/18/15

BW	WW	YW	Milk	SC	HT	MWT	REA	IMF	BF	Intake	FG	\$Ranch	\$Feeder	\$Profit™
3.0	38	64	15	0.47	0.73	31.3	0.34	0.18	-0.01	38	0.01	\$24	\$40	\$5,802

Call (970) 444-BULL to Order Semen Today!

Leachman Elite Composite Stabilizers

Leachman **Yosemite** X730Y



Calving Ease

High Accuracy

Leachman \$Profit™

\$13,337

\$Ranch \$70 • \$Feeder \$75

Feed:Gain Feed Intake
-0.34 -73

Leachman ABCs as of 12/18/15	BW	WW	YW	MILK	SC	HT	MAT WT	REA	IMF	CAR WT	BF
	-4.6	40	66	21	-0.81	0.41	-34	1.04	0.38	792	0.01

Hooks Shear Force 38K
Sire: Leachman Porterhouse L094W
T M L LADY 60K 647 47M
GKT Boo Boo 155E
Dam: RTH AN/GV 862
HXC INDIGO 315N

Born: 2/27/11
Accuracy: HIGH
Calving Ease: ★★★★★
Disposition: 4
Heterozygous Polled
Homozygous Black

ASA#: 2901755, AGA#: 1237654
50AN-25SM-25GV

\$25/unit

As low as \$23 at 50+ units
100+ units-Free Shipping!

ASA EPDs as of 12/1/15	CE	BW	WW	YW	MCE	Milk	MWW	Doc	CW	YG	Marb	Fat	REA	Shr	API	TI
	14.4	-2.2	58.6	82.7	9.3	29.4	58.7	8.2	15.6	-0.27	0.39	-0.030	0.66	-0.34	136.7	71.6

Yosemite is a herd changer! He represents the moderation and efficiency that many cattlemen are seeking. Moderate stature, mild-manner, correct structure and muscle expression is what catches the cattlemen's eye for this bull physically, but his best asset is what he will do for your bottom line. Yosemite ranks in the elite Top 1% on \$Profit, BW, MAT WT, Intake, F:G, REA & \$Ranch out of the entire Leachman Stabilizer gene pool! Yosemite has been used heavily in our cooperator system and has been tested against other proven

sires in our test herd program. His test herd data proved that his progeny are well below average for birth, above average for growth and they excel in the feed yard. Yosemite can be used on heifers with confidence, but should also be considered for cows, as he will increase carcass quality, maintain growth, decrease your feed bill, & moderate mature size. On top of that, he will add hybrid vigor to a predominantly SimAngus cow base!

Owners: Leachman Cattle of Colorado, R Genetics, & Rod Cook.



Yosemite as a yearling



Yosemite daughter sold in the 2014 Leachman Spring Sale.



Yosemite son, Leachman Doc X124B, sold in the 2015 Leachman Spring Sale.

ASA SimAngus EPD Average as of 12/1/15

CE	BW	WW	YW	MCE	Milk	MWW	CW	YG	Marb	Fat	REA	API	TI
10.4	0.7	60.0	91.8	7.9	21.7	51.6	25.4	-0.20	0.32	-0.034	0.59	120.7	67.00

Call (970) 444-BULL to Order Semen Today!



Leachman Elite Composite Stabilizers

New Release

CE Prospect

Leachman High Country J020B



- Elite 4-star calving ease Trinity son.
- Large ribeye, super low F:G & Intake, with a moderate mature weight EPD.
- High selling bull in the 2015 Leachman High Altitude sale in Loma, CO, with a PAP of 39.

Leachman \$Profit™
\$16,087
 \$Ranch \$63 • \$Feeder \$115
 Feed:Gain Feed Intake
-0.54 -116

- Better than the Top 1% for \$Ranch, \$Feeder & \$Profit tabulation!

Owners: Leachman Cattle of Colorado, & Nottingham Ranch.

Leachman ABCs as of 12/18/15	BW	WW	YW	MILK	SC	HT	MAT WT	REA	IMF	CAR WT	BF
	-3.5	51	88	25	-0.28	0.63	-8	1.02	0.36	828	-0.01

Hooks Shear Force 38K Sire: Hooks Trinity 9T Hooks Pearl 22-P G A R Retail Product Dam: LCoC Eileenmere RG121 LCC Eileenmere LG413	Born: 2/12/14 Accuracy: Low Calving Ease: ★★★★★ Disposition: 4 Homozygous Polled Heterozygous Black	62AN-38SM \$20/unit As low as \$18 at 50+ units 100+ units-Free Shipping!
---	--	---

New Release

CE Prospect

Leachman Able X549A



- Elite 4-star calving ease son of Yosemite.
- High selling bull in the 2015 Leachman Early Bird Sale.
- Homozygous Black and Polled version of his sire with and even higher \$Profit.

Leachman \$Profit™
\$14,987
 \$Ranch \$68 • \$Feeder \$96
 Feed:Gain Feed Intake
-0.19 -52

- Top Percentiles: 0.1% BW, 0.1% \$Ranch, 1% \$Profit, 1% REA and 5% for MWT, Intake, F:G, Milk & \$Feeder

Owners: Leachman Cattle of Colorado & Rod Cook.

Leachman ABCs as of 12/18/15	BW	WW	YW	MILK	SC	HT	MAT WT	REA	IMF	CAR WT	BF
	-4.9	51	83	26	-0.37	0.63	-25	0.92	0.32	817	0

Leachman Porterhouse L094W Sire: Leachman Yosemite X730Y RTH AN/GV 862 Hooks Shear Force 38K Dam: LCoC MS Missile YL118 LCoC Red Missile SA039	Born: 9/13/13 Accuracy: Low Calving Ease: ★★★★★ Disposition: 4 Homozygous Polled Homozygous Black	50B-50C \$20/unit As low as \$18 at 50+ units 100+ units-Free Shipping!
---	--	---



Leachman ABC EPD Average as of 12/18/15

BW	WW	YW	Milk	SC	HT	MWT	REA	IMF	BF	Intake	FG	\$Ranch	\$Feeder	\$Profit™
3.0	38	64	15	0.47	0.73	31.3	0.34	0.18	-0.01	38	0.01	\$24	\$40	\$5,802

Call (970) 444-BULL to Order Semen Today!

Leachman Elite SimAngus® Stabilizers

Leachman **Testify** D003Z

Calving Ease



Leachman \$Profit™
\$14,028
 \$Ranch \$61 • \$Feeder \$93
 Feed:Gain Feed Intake
-0.30 -109

Leachman ABCs as of 12/18/15	BW	WW	YW	MILK	SC	HT	MAT WT	REA	IMF	CAR WT	BF
	-3.8	43	73	25	0.57	0.12	-20	0.58	0.53	806	0

<p><i>Hooks Shear Force 38K</i> Sire: Hooks Trinity 9T <i>Hooks Pearl 22-P</i> <i>Becton Neptune N204 R2</i> Dam: HXC 582R <i>HXC INDIGO 315N</i></p>	<p>Born: 2/6/12 Accuracy: MID Calving Ease: ★★★★★ Disposition: 3.5 Homozygous Polled Heterozygous Black</p>	<p>ASA#: 2703916 • 62AN-38SM \$25/unit As low as \$23 at 50+ units 100+ units-Free Shipping!</p>
--	--	--

ASA EPDs as of 12/11/15	CE	BW	WW	YW	MCE	Milk	MWW	Doc	CW	YG	Marb	Fat	REA	Shr	API	TI
	22.2	-6.3	49.5	74.2	8.8	28.6	53.3		4.9	-0.13	0.68	0.004	0.39		176.9	78.5

Testify has become our favorite proven calving ease son of Trinity to date! His progeny not only solidified him as a 5-star calving ease sire, but the calves are impressive in their kind, shape, and substance. Testify's refined Angus type adds a very eye appealing, moderate look while maintaining hybrid vigor. He ranks above the Top 1% for BW, but he's not just a heifer bull! If you would like to moderate size and birth weight in your herd without losing growth (Top 26% YW) and carcass (Top 1% IMF) he is a very relevant option. To boot -- he is a very sound bull with an excellent

disposition. Testify is also one of the most feed efficient sires we have tested and ranks above Top 1% for \$Profit in the Leachman Stabilizer database at \$14,028. We have used him heavily in the Leachman cooperator and test herd systems.

Owners: Leachman Cattle of Colorado, Hairpin Elite Nucleus, Marc Reiger, Grubl Ranch, A & T Cattle Co, R Genetics, Rod Cook, Hayse Farms, MJB Ranch, Slovek Ranch, Triple Creek Ranches, Ralph Huntley & Son, Rempe Farms, Mike Pay, & Gilbrea Farm.



Testify sires attractive, easy fleashing, moderate progeny like these three sons from the 2015 Leachman Spring Sale.

ASA SimAngus EPD Average as of 12/11/15

CE	BW	WW	YW	MCE	Milk	MWW	CW	YG	Marb	Fat	REA	API	TI
10.4	0.7	60.0	91.8	7.9	21.7	51.6	25.4	-0.20	0.32	-0.034	0.59	120.7	67.00

Call (970) 444-BULL to Order Semen Today!



Stabilizers Work Great in High Country!

Leachman Cattle of Colorado is working with the Nottingham Ranch to breed a herd of Stabilizers that specialize in high altitude adaptability. All sires are PAP tested. The first bull calves out of two year old heifers will be PAP tested along with their dams. From this data, Colorado State University is developing a PAP EPD for Leachman Cattle of Colorado.

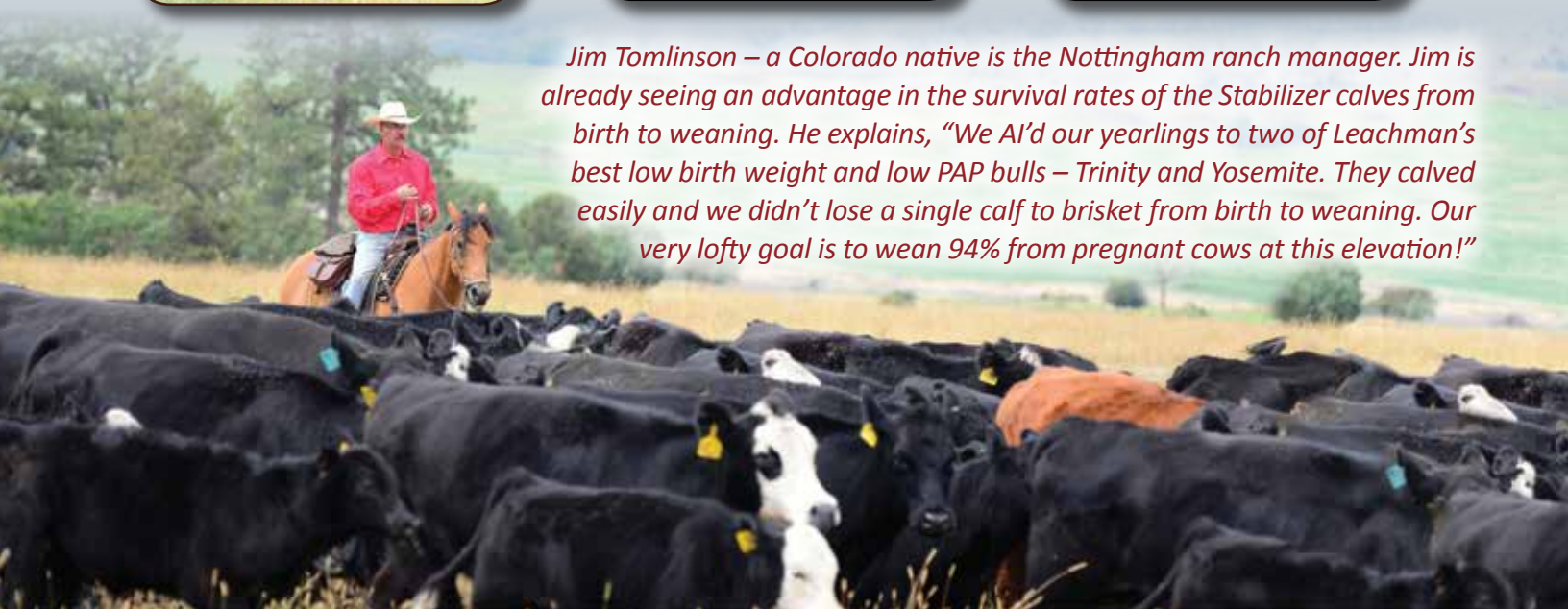
Leachman Cattle addresses the profitability of high country operations with comprehensive PAP testing on these top sires.



Susan Nottingham and Lee Leachman



Jim Tomlinson – a Colorado native is the Nottingham ranch manager. Jim is already seeing an advantage in the survival rates of the Stabilizer calves from birth to weaning. He explains, “We AI’d our yearlings to two of Leachman’s best low birth weight and low PAP bulls – Trinity and Yosemite. They calved easily and we didn’t lose a single calf to brisket from birth to weaning. Our very lofty goal is to wean 94% from pregnant cows at this elevation!”



Leachman Elite SimAngus® Stabilizer

Leachman **Porterhouse** L094W



High Accuracy

Low PAP

Leachman \$Profit™
\$14,031
 \$Ranch \$56 • \$Feeder \$99
 Feed:Gain Feed Intake
-0.20 -59

Leachman ABCs as of 12/18/15	BW	WW	YW	MILK	SC	HT	MAT WT	REA	IMF	CAR WT	BF
	-2.4	46	78	22	0.43	0.62	-12	1.1	0.29	826	-0.01

<p><i>Nichols Legacy G151</i> Sire: Hooks Shear Force 38K <i>C&D Tracy</i> <i>LCC FOCAL POINT 3933K</i> Dam: T M L LADY 60K 647 47M <i>LCC TML 1407 LADY 60K</i></p>	<p>Born: 3/26/09 Accuracy: HIGH Calving Ease: ★★ ★ Disposition: 3.5 Homozygous Polled Homozygous Black</p>	<p>ASA#: 2682651 • 50SM-50AN \$23/unit As low as \$20 at 50+ units 100+ units-Free Shipping!</p>
---	---	--

ASA EPDs as of 12/11/15	CE	BW	WW	YW	MCE	Milk	MWW	Doc	CW	YG	Marb	Fat	REA	Shr	API	TI
	18.4	-4.6	55.1	83.8	12.1	29.6	57.1	13.0	13.1	-0.35	0.53	-0.042	0.78	-0.53	170.0	78.3



Leachman Cattle of Colorado has tested over 2000 cattle with Dr. Tim Holt of Colorado State University. Dr. Holt is the world's foremost expert on PAP testing.

Porterhouse is one of our favorite proven SimAngus herd sires! With heavy use in both the Leachman system, and our Test Herd Program, we are confident in his ability to produce deep-bodied, highly feed efficient cattle that will moderate mature weight and increase profit both on the ranch and in the feedlot. Porterhouse has proven to be one of the top maternal sires in the system. If you have been searching for a homozygous black & polled descendent of Shear Force that will increase efficiency and profitability, look no further. Porterhouse's top ASA percentiles rankings are: 2% CE 1% BW, 10% MCE 4% Milk, 10% YG, 20% Marb, 20% REA, 5% Shr, 3% API, & 15% TI; Plus he is Top 5% FG, 2% Intake, 1% \$Ranch, 3% \$Feeder, & 1% \$Profit for ABC EPD's.

Attention High Altitude Ranchers!

If you are looking for a high accuracy AI option for high altitude, Porterhouse is your answer! He has had over 100 progeny PAP tested and they have consistently scored under 43.



Ryan Peterson is the LCoC high altitude specialist. To find out more about opportunities that Leachman genetics can bring to high country outfits, call Ryan at 970-672-6828.

Owners: Leachman Cattle of Colorado, Grubl Ranch, & Bob Shugert.

Leachman ABC EPD Average as of 12/18/15

BW	WW	YW	Milk	SC	HT	MWT	REA	IMF	BF	Intake	FG	\$Ranch	\$Feeder	\$Profit™
3.0	38	64	15	0.47	0.73	31.3	0.34	0.18	-0.01	38	0.01	\$24	\$40	\$5,802

Call (970) 444-BULL to Order Semen Today!



Leachman Elite SimAngus® Stabilizers

RLWF Premium Plus Focus Z168



Leachman \$Profit™
\$11,280*
 \$Ranch \$56 • \$Feeder \$66
 Feed:Gain Feed Intake
-0.07 16

Here at Leachman's we are continually searching for high value herd bulls unrelated to our major lines. Because of Trinity and Shear Force's heavy influence we find this non-related, homozygous black & polled, top 1% API, SimAngus herd bull prospect, very intriguing. The Simmental Association predicts that Premium Plus Focus should be a viable option on heifers, and produce growthy progeny with excellent carcass quality. Premium Plus Focus should be on the short list for anyone who is fortunate enough to be breeding Trinity and Shear Force influence daughters this spring.

*Note: ABC & Index values on this bull are based on Association/pedigree estimates.

Owners: Leachman Cattle of Colorado; Whelan Farms & Mike Pay

Leachman ABCs as of 12/18/15	BW	WW	YW	MILK	SC	HT	MAT WT	REA	IMF	CAR WT	BF
	-1.9	39	81	20	0.39	0.52	5	0.65	0.51	785	0.03

<p>G A R US PREMIUM BEEF Sire: GW PREMIUM BEEF 021TS GW Miss Lucky Charm 410P MYTTY IN FOCUS Dam: SSF BLK KATIE X324 SSF BLK KATIE U432</p>	<p>Born: 9/21/12 Accuracy: LOW Calving Ease: ★★ ★ Disposition: 3 Homozygous Polled Homozygous Black</p>	<p>ASA#: 2655270 • 50AN-50SM \$20/unit As low as \$18 at 50+ units 100+ units-Free Shipping!</p>
--	--	--

ASA EPDs as of 12/11/15	CE	BW	WW	YW	MCE	Milk	MWW	Doc	CW	YG	Marb	Fat	REA	Shr	API	TI
	20.3	-4.3	47.6	88.0	10.7	24.0	47.9	13.7	17.1	-0.13	0.90	0.023	0.67	-0.23	181.0	81.0

LCoc Profitmaker L104X



Leachman \$Profit™
\$11,036
 \$Ranch \$31 • \$Feeder \$93
 Feed:Gain Feed Intake
-0.36 -35

Profitmaker combines excellent growth, solid maternal background, good carcass values, and outstanding Feed to Gain & Intake EPD's. It is no wonder this bull ranks in top 5% of all Stabilizers evaluated for \$Profit. This homozygous black and homozygous polled herd sire would be the perfect match for ranchers looking to increase uniformity, efficiency, growth, heterosis, and profitability in their cow herd. If overall dimension and composition is important to you, don't look past this bull!



Profitmaker daughter at Sweetwater Ranch, Hays KS.

Owners: Leachman Cattle of Colorado, Grubl Ranch, & Bob Shugert.

Leachman ABCs as of 12/18/15	BW	WW	YW	MILK	SC	HT	MAT WT	REA	IMF	CAR WT	BF
	2	52	86	19	0.8	0.67	45	0.89	0.21	840	-0.02

<p>Nichols Legacy G151 Sire: Hooks Shear Force 38K C&D Tracy Bon View New Design 1407 Dam: R K S PG460 LCOC STABILIZER J4168</p>	<p>Born: 3/13/10 Accuracy: HIGH Calving Ease: Disposition: 3.5 Homozygous Polled Homozygous Black</p>	<p>ASA#: 2790570 • 50AN-50SM \$18/unit As low as \$16 at 50+ units 100+ units-Free Shipping!</p>
---	--	--

ASA EPDs as of 12/11/15	CE	BW	WW	YW	MCE	Milk	MWW	Doc	CW	YG	Marb	Fat	REA	Shr	API	TI
	16.2	-1.3	68.8	102.3	8.6	24.5	58.9	10.2	28.6	-0.25	0.58	-0.020	0.85	-0.39	158.6	82.2

ASA SimAngus EPD Average as of 12/1/15

CE	BW	WW	YW	MCE	Milk	MWW	CW	YG	Marb	Fat	REA	API	TI
10.4	0.7	60.0	91.8	7.9	21.7	51.6	25.4	-0.20	0.32	-0.034	0.59	120.7	67.00

Call (970) 444-BULL to Order Semen Today!



Leachman Elite Balancer® Stabilizers

Stability is an outcross answer to build hybrid vigor and \$Profit in your cow herd! He has a very intriguing pedigree and breed make-up for the composite breeders looking to diversify their SimAngus gene pool. It is always important for us to blend in superior genetics from major breeds into our Stabilizer breed. Our formula is not only optimum hybrid vigor, but added genetic value. With a top 1% \$Profit index, Stability allows you to maintain or add hybrid vigor, with his Gelbvieh influenced pedigree, in a very profitable way. As a long-bodied, big-hipped yearling, Stability proved to be highly feed efficient while on test as he posted one of the highest F:G & Intake EPD's in the 2013 offering. Not only is Stability an efficient animal, he is loaded with growth as well, with better than top 5% WW and YW EPD's. Anybody who is looking for a high growth, feed efficient, & highly profitable sire for cows, should strongly consider Stability in 2016.

Leachman **Stability** X147Z



Leachman \$Profit™
\$13,892
 \$Ranch \$65 • \$Feeder \$87
 Feed:Gain **-0.58** Feed Intake **-129**

Owners: Leachman Cattle of Colorado, Marc Reiger, Grubl Ranch & Charlie Molvig.

Leachman ABCs as of 12/18/15	BW	WW	YW	MILK	SC	HT	MAT WT	REA	IMF	CAR WT	BF
	0.1	60	89	25	0.14	0.64	13	0.75	0.16	822	0

<p><i>Leachman Paradigm G289U</i> Sire: EGL Balanced Paradigm X677 R341 HOOKS SQUIRE 61S Dam: RGR Stabilizer UX437 RGR Stabilizer SX011</p>	<p>Born: 3/9/12 Accuracy: LOW Calving Ease: Disposition: 3 Homozygous Polled Heterozygous Black</p>	<p>26B-50C \$20/unit As low as \$18 at 50+ units 100+ units-Free Shipping!</p>
--	--	--

Apollo is a very intriguing, high record, Balancer™ herd sire prospect! We continue to cross the country to find the top prospects that fit our system and this bull rang the bell. He was the standout Balancer bull at the 2014 Knoll Crest Farm Fall Sale where he was the high seller. In the Stabilizer system there is always a desire to continue to expand the gene pool by adding high record outcross genetics. Apollo is a great example of that. He is a deep, easy-fleshing, thick bull with great structure, feet and legs. He is in the top 1% of the Gelbvieh breed for MARB & FPI, and better than the top 4% for REA, CED and CEM.

KCF Bennett **Apollo** A340



Leachman \$Profit™
\$15,077*
 \$Ranch \$39 • \$Feeder \$132
 Feed:Gain **0.08** Feed Intake **49**

Owners: Leachman Cattle of Colorado, Knoll Crest Farm, & Meinders Stock Farm

*Note: ABC & Index values on this bull are based on Association/pedigree estimates.

Leachman ABCs as of 12/18/15	BW	WW	YW	MILK	SC	HT	MAT WT	REA	IMF	CAR WT	BF
	1.2	54	85	21	0.34	0.63	27	0.86	0.75	833	-0.01

<p><i>GAR Predestined</i> Sire: GAR Progress GAR Objective Bennett T524 Dam: Miss T524 Y533 Miss Landmark S428</p>	<p>Born: 9/19/13 Accuracy: LOW Calving Ease: Disposition: 3 Homozygous Polled Homozygous Black</p>	<p>AGA#: 1274638 • 50GV-50AN \$20/unit As low as \$18 at 50+ units 100+ units-Free Shipping!</p>
---	---	--

AGA EPDs as of 12/11/15	CE	BW	WW	YW	MK	TM	CEM	ST	YG	CW	REA	MB	FPI
	18	-1.6	68	106	31	66	12	4	-0.25	31	0.82	1.02	100.21

Leachman ABC EPD Average as of 12/18/15

BW	WW	YW	Milk	SC	HT	MWT	REA	IMF	BF	Intake	FG	\$Ranch	\$Feeder	\$Profit™
3.0	38	64	15	0.47	0.73	31.3	0.34	0.18	-0.01	38	0.01	\$24	\$40	\$5,802

Call (970) 444-BULL to Order Semen Today!



Leachman Elite South Devon

The South Devon breed has emerged as the dominant British breed alternative to Angus. With extensive experience breeding South Devon cattle that dates back to our own purebred herd, which started in the 80's in Montana, we are confident that the South Devon breed is more than competitive on \$Profit. Much of this is based on their unique combination of heavy muscling with marbling levels comparable to Angus. In addition, substantial evidence now suggests that the breed excels on feed efficiency. Based on our relentless pursuit of high profitability cattle, we are incorporating the best South Devon bulls available into our Stabilizer composite program. These bulls are ideal options to cross on Angus, Sim-Angus, and Gelbvieh –Angus females.



Dar Giess, past president of the North American South Devon Association is also our Minnesota representative and an LCoC cooperator. He has bred and raised several of the top South Devon animals in our system.

Breed Update:

Leachman cattle is actively engaged in discussions with a global group of South Devon breeders to implement a coordinated selection system based on the \$Profit index.

BC Progress 315U



Owners: Leachman Cattle of Colorado, MJB Ranch, & Nichols Farms.

Progress is the highest \$Profit option for adding South Devon to your composite gene pool! Our continued commitment to those of you that use our Stabilizer program is to find and test bulls from the most compatible and valuable breeds. Along with that we require that every component breed is represented by sires that can compete with and add to the value of existing cattle in our gene

pool. Progress not only meets our criteria, but posts one of the highest \$Profit value in this offering, and ranks in the top 1/2 of 1% for FG and Intake. This purebred South Devon sire excels in nearly any breeding scenario from pure bred seed stock application to developing a unique composite gene pool. If you're a trailblazer, this bull needs to be on your short list.

Leachman \$Profit™

\$16,060

\$Ranch \$36 • \$Feeder \$147

Feed:Gain **-0.49** Feed Intake **-53**

Leachman ABC EPDs as of 12/18/15	BW	WW	YW	MILK	SC	HT	MAT WT	REA	IMF	CAR WT	BF
	3.9	56	102	29	0.46	1.26	54	0.65	0.26	869	-0.02

Cimarron CASSANOVA 354N
Sire: MJB ROMEO 125R
 MJB NIKKI 3657N
 DLCC SURE-ENUF
Dam: MJB SASSY 6714S
 BC LAVINA 1763L

Born: 1/28/08
 Accuracy: MID
 Calving Ease:
 Disposition: 3
 Polled
 Heterozygous Black

NADSA#: 194458 • 100 DS

\$20/unit

As low as \$18 at 50+ units

100+ units-Free Shipping!

Leachman ABC EPD Average as of 12/18/15

BW	WW	YW	Milk	SC	HT	MWT	REA	IMF	BF	Intake	FG	\$Ranch	\$Feeder	\$Profit™
3.0	38	64	15	0.47	0.73	31.3	0.34	0.18	-0.01	38	0.01	\$24	\$40	\$5,802

Call (970) 444-BULL to Order Semen Today!



Performance

Leachman Elite South Devon

DLCC **Shur-Loc** 99W



Leachman \$Profit™
\$14,167
 \$Ranch \$49 • \$Feeder \$109
 Feed:Gain Feed Intake
-0.58 -125

Leachman ABC EPDs as of 12/18/15	BW	WW	YW	MILK	SC	HT	MAT WT	REA	IMF	CAR WT	BF
	3.2	51	93	29	0.93	0.56	44	0.5	0.03	845	0

<p><i>DLCC SURE-ENUF</i> Sire: MJB SHUR LOC 106S <i>MJB PROMISE 4550P</i> <i>DLCC BARON 56E</i> Dam: VPG KEYSHA 047K <i>LSCC FERGIE 79F</i></p>	<p>Born: 4/14/09 Accuracy: MID Calving Ease: ★★ ★ Disposition: 4.5 Homozygous Polled Heterozygous Black</p>	<p>NADSA#: 196653 • 100 DS \$25/unit As low as \$20 at 50+ units 100+ units-Free Shipping!</p>
--	--	--

Shur Loc may be the most attractive bull in the entire South Devon breed! His combination of near Angus phenotype and performance background make him an interesting option for South Devon Seedstock breeders, and for nearly any cross breeding program as he will add heterosis to both British and Continental based herds. He will not only add hybrid vigor, but with good birth (top 28% BW), high growth (top 2% YW), big ribeye (top 5% REA), and super feed efficiency (top 1% Intake & F:G), he will add profit (top 1% \$Profit) to your herd as well! Shur Loc is well-balanced, easy fleshing, heavy muscled and smooth made. It comes as no surprise that he is a 2-time Denver Champion. This South Devon trait leader for birth weight passes his good looks on to his calves as well, just like the progeny pictured here.



This impressive Shur Loc Daughter, "DLCC Tiffany 24A", Sold in the 2014 Leachman Elite Female Sale.



Shur Loc sired the 2015 NWSS Grand Champion Bull

Owners: Leachman Cattle of Colorado, & DLCC Ranch.

Leachman ABC EPD Average as of 12/18/15

BW	WW	YW	Milk	SC	HT	MWT	REA	IMF	BF	Intake	FG	\$Ranch	\$Feeder	\$Profit™
3.0	38	64	15	0.47	0.73	31.3	0.34	0.18	-0.01	38	0.01	\$24	\$40	\$5,802

Call (970) 444-BULL to Order Semen Today!





\$PROFIT™

Why \$Profit helps:

Today, ranchers have too much data to study. With over 20 EPD traits and so many measurements, buying the best bull has become really confusing. Every bull is good on some traits and weak on others. The challenge is figuring out how each of those traits is going to impact your bottom line. We wish we knew which bull would make the most money from birth to slaughter, but most of the time, we end up guessing.

Back in 2005, we decided that we didn't want to guess any more. Dallas Horton asked Lee Leachman to come up with one number that sorted the bulls on their bottom line impact – so we did. Since then, we have provided \$Profit on all bulls we sell. Furthermore, we are basing almost all of our own selection decisions on \$Profit. Literally, we are putting our money where our mouth is.

Let me tell you a story about two bulls that we bought a few years ago from the same sale. Both bulls had complete performance data, ratios, ultrasound, and even feed efficiency data. They were both the same breed. After the sale, we added their herd's data into our database to calculate EPD's and \$Profit. One bull came out at \$8,374 and the other came out at \$14,258. That is a huge difference – one bull was a great buy and the other was an expensive mistake.

How \$Profit works:

\$Profit assumes that the average commercial bull will have 100 progeny over its lifetime. The model assumes that you keep 30% of your heifers as replacements and that you retain ownership on the remainder of the calves through finishing and sale on a grid. We realize that many don't retain ownership, but doesn't it make the most sense to select from birth all the way to slaughter? Feedlots have already proven their willingness to pay premiums for superior Leachman sired calves.

Our simulation model then factors in all of the effects on both income and expense to come up with a net profit figure for each bull. \$Profit allows you to compare any two bulls and calculate the difference in profit that they are expected to generate in your herd. Let's compare a \$10,000 \$Profit bull to \$6,000 \$Profit bull (the average 2008 born Angus bull). The predicted difference between the bulls is \$4,000 or about \$40 per calf. \$Profit works for us and it will work for you too.



**On the Ranch,
In the Feedlot,
& On the Rail,
\$Profit™ simply works!**

What traits are included in \$Profit:

\$Profit includes nearly every trait that impacts profitability. The effect of most traits on profit is fairly simple to understand. Here is the list of what is included and its effect:

Revenue Traits

- Calving ease = more calves
- Weaning & yearling EPD = more weight
- Fertility (days to conception) = more weight and more calves
- Carcass weight = worth more up to 1050 lbs.
- Marbling = valued based on grid premiums
- Ribeye area = value as impacts yield grade
- % Retail Product = more yield is more meat

Cost Traits

- Cow mature size = bigger eats more
- Cow intake = more intake costs more
- Feedlot feed efficiency = cost of gain

Some traits are not so easily characterized for \$Profit. Milk, for example, is a good thing until you get too much. When over +25, milk EPD has a more negative effect on fertility than it has a positive effect on weaning weight. There are a few traits not yet included in \$Profit: longevity, structure, and disposition. These traits are important but difficult to express in dollars.

Feed Efficiency Explained:

Feed:Gain: Difference in the amount of feed a bull's progeny will consume to produce one pound of gain.

Example: A -0.50 F:G EPD means this animal's progeny will consume 1/2 pound less feed per pound of gain than would progeny of a 0.00 F:G EPD sire.

Feed Intake: Difference in feed consumption of each of a bull's progeny in a 112 day feeding period.

Example: A steer whose sire has a -100 Intake EPD will eat 100 pounds less feed in 112 days than one whose sire had a zero Intake EPD.

Cutting Edge Financial Indexes that Include Tested Feed Efficiency Values!

Leachman \$Profit™

\$12,712

\$Ranch \$54 • \$Feeder \$111

Feed:Gain Feed Intake

-0.32 **-46**

\$Ranch: Profit from birth through weaning. Includes:

- *Fertility, Milk, Growth*
- *Cow feed intake & Mature size*

Average	Top 25%	Top 1%
\$24	\$33	\$54
Good	Better	Best!

\$Ranch reference guide.

\$Feeder: Profit from weaning to harvest. Includes:

- *Feed conversion*
- *Carcass value*
- *Carcass weight*

Average	Top 25%	Top 1%
\$40	\$61	\$111
Good	Better	Best!

\$Feeder reference guide.

\$Profit: Puts it all together. **\$Ranch + \$Feeder.**

- ***One number that predicts your bottom line!***

Average	Top 25%	Top 1%
\$5,802	\$7,804	\$12,712
Good	Better	Best!

\$Profit reference guide.

Why Angus?

Now, more than ever, Angus breeders are seeking direction. Some continue to pursue \$Beef. Others are chasing maximum growth. Still others are breeding a certain type and kind. While none of these directions are bad, they are not the best. A better selection direction is to make Angus cattle more profitable from birth to slaughter. Our relentless pursuit of superior profitability led us to the early identification of several breed impacting sires.

Our Reputation is Finding and Breeding the Good Ones:



LCC New Standard

We bred and raised New Standard at Leachman Cattle, then sold him to ABS as a yearling.



GAR-EGL Protégé

We purchased Protégé jointly with ABS at 18 months from Gardiner Angus.



New Design 1407

We first bought his dam and grand dam, then returned to buy 1407 as a yearling.



New Design 878

We purchased his dam with 878 at side in partnership at the Bon View dispersal.



Good bulls run in our family!
Call (970) 444-BULL to Order Semen Today



The Reputation Continues!

For the past 75 years Leachman's have identified the right bulls for the times.
Here is our current leader for proven feed efficiency and so much more...

TCA **Visionary** 158



Calving Ease

Performance

Leachman \$Profit™
\$16,921
 \$Ranch \$57 • \$Feeder \$132
 Feed:Gain Feed Intake
-0.72 -184

S A F Connection Sire: SydGen C C & 7 SydGen Forever Lady 4087 S A V 5175 Bando 0699 Dam: T C A Treasure 0699 601 Sweetwater Treasure 73M	Born: 3/14/11 Accuracy: MID Calving Ease: ★★★★★ Disposition: 5 Homozygous Polled Homozygous Black	AAA#: 16972676 • DDF \$35/unit 50+ units \$30 As low as \$25 at 100+ Units 100+ units-Free Shipping!
--	--	--

AAA EPDs as of 12/1/15	CED	BW	WW	YW	DMI	YH	SC	Doc	HP	CEM	Milk	MW
	+13	-2.0	+55	+102	+0.27	+0.7	+1.00	+27	+15.2	+12	+34	+37
	MH	\$EN	CW	Marb	RE	Fat	\$W	\$F	\$G	\$QG	\$YG	\$B
	+0.7	-28.25	+38	+0.76	+1.22	+0.015	+69.30	+63.87	+47.20	+35.70	+11.50	+143.04



Visionary daughter with a perfect udder.



Visionary son, Leachman Perception. Semen available, page 21.

Visionary is the proven high \$Profit, highly feed efficient Angus choice! Here is the opportunity for Angus breeders to move their herd significantly on F:G, Intake and every one of the LCoC & AAA \$ index's! Seldom do seedstock producers have the genetic advantage to strengthen every economic trait with one herd sire. Here is a 4-star calving ease herd sire that will move the profitability of your herd in the right direction quickly! There are several Angus sires that are true heifer bulls, but we don't know of ANY others that can compete with these feed efficiency values, while maintaining the growth & carcass merit that Visionary does. This pivotal herd sire is fast earning his place alongside the legendary Angus sires that have built our reputation.

Owners: Leachman Cattle of Colorado, & Mark & Ruth Kuhn.

AAA Breed Average EPD's as of 12/1/15

CED	BW	WW	YW	DMI	YH	SC	Doc	HP	CEM	Milk	MW	MH	\$EN	CW	Marb	RE	Fat	\$W	\$F	\$G	\$B
6	1.2	49	88	.25	.5	.80	12	9.7	8	23	27	.3	-6.57	30	.49	.42	.014	45.74	43.59	29.18	102.33

Call (970) 444-BULL to Order Semen Today!



Leachman Elite Angus

High Accuracy

Leachman Resolution G228U



Resolution is the proven, maternal, feed efficient, Angus herd sire with outstanding phenotype! He has the distinction of ranking in the very elite top 1% category for our Feed Efficiency and Intake EPD's, and his \$13,890 \$Profit™ ranks him in the top 1% of ALL Angus bulls evaluated in our system. Phenotypically, Resolution is an absolute stand out! He is deep, long, and loaded with capacity, all on a moderate frame.

Leachman \$Profit™
\$13,890

\$Ranch \$52 • \$Feeder \$103

Feed:Gain Feed Intake
-0.36 -36



Resolution sires great females like this daughter.

Owners: Leachman Cattle of Colorado, Lohmann Angus, Eagle Pass Ranch, Summitcrest Farms, & The 2009 Feed Efficiency Syndicate.

<p>B C C Bushwacker 41-93 Sire: Dr J Analyst M250 G A R Precision 706 Bon View New Design 878 Dam: L A Gammer Pride LG 291 Finks Pride 517 210 H Y</p>	<p>Born: 2/14/08 Accuracy: HIGH Calving Ease: Disposition: 3 Homozygous Polled Homozygous Black</p>	<p>AAA#: 16248786 • AMF, NHF \$25/unit As low as \$20 at 50+ units 100+ units-Free Shipping!</p>
--	---	---

AAA EPDs as of 12/1/15	CED	BW	WW	YW	DMI	YH	SC	Doc	HP	CEM	Milk	MW
	-2	+2.2	+52	+92	-.48	+3	+2.09	+3	+3.1	+0	+27	+26
	MH	\$EN	CW	Marb	RE	Fat	\$W	\$F	\$G	\$QG	\$YG	\$B
	+1	-11.75	+27	+65	+54	+0.93	+54.05	+65.86	+28.55	+32.60	-4.05	+115.47

New Release

Leachman Bullseye G052B



- High selling Angus Bull - 2015 Leachman Spring Sale.
- Sire "Hit The Mark" - \$14,987 \$Profit with royal lineage: Bismarck X Predestined X 1407 X Protege's Dam!
- Outstanding performance with a 117 weaning ratio, 111 yearling ratio and a huge ribeye.

Leachman \$Profit™
\$17,005

\$Ranch \$47 • \$Feeder \$145

Feed:Gain Feed Intake
-0.14 -6

- Chiseled muscular phenotype!
- Top .1% for \$Feeder & \$Profit.
- Highest yearling \$Profit tabulation in the offering!

Owners: Leachman Cattle of Colorado, Bob Ruf, Kevin Unger, & Lincoln County Feed Yard.

<p>S A V Bismarck 5682 Sire: Galaxy Hit the Mark 0006 Galaxy Isabel 8326 LD Redirect 11 Dam: LCoC Grammer PG084 LCC Grammer K3208</p>	<p>Born: 2/12/14 Accuracy: LOW Calving Ease: ★★ ★ Disposition: 3 Homozygous Polled Homozygous Black</p>	<p>AAA#: 17981763 • DDC \$20/unit As low as \$18 at 50+ units 100+ units-Free Shipping!</p>
---	---	--

AAA EPDs as of 12/1/15	CED	BW	WW	YW	DMI	YH	SC	Doc	HP	CEM	Milk	MW
	+9	-.7	+54	+97	+1.15	+6	+58	+7	+12.4	+11	+32	+2
	MH	\$EN	CW	Marb	RE	Fat	\$W	\$F	\$G	\$QG	\$YG	\$B
	+2	-16.44	+27	+70	+0.97	-.013	+72.25	+58.24	+47.00	+34.09	+12.91	+119.66

AAA Breed Average EPD's as of 12/1/15

CED	BW	WW	YW	DMI	YH	SC	Doc	HP	CEM	Milk	MW	MH	\$EN	CW	Marb	RE	Fat	\$W	\$F	\$G	\$B
6	1.2	49	88	.25	.5	.80	12	9.7	8	23	27	.3	-6.57	30	.49	.42	.014	45.74	43.59	29.18	102.33

Call (970) 444-BULL to Order Semen Today!



Leachman Elite Angus

Leachman **Decision** G155A



Calving Ease

Leachman \$Profit™

\$14,046

\$Ranch \$77 • \$Feeder \$75

Feed:Gain Feed Intake
-0.34 -88

Leachman Resolution G228U
Sire: LCoC Resolution G212X
TOP Petronite SG611
ALC Big Eye D09N
Dam: TOP Beuleh SG474
LCC Frontline LG462

Born: 4/19/13
Accuracy: LOW
Calving Ease: ★★★★★
Disposition: 5
Homozygous Polled
Homozygous Black

AAA#: 17854072 • DDF, RDF

\$30/unit

50+ units \$25

As low as \$20 at 100+ Units

100+ units-Free Shipping!

AAA EPDs as of 12/1/15	CED	BW	WW	YW	DMI	YH	SC	Doc	HP	CEM	Milk	MW
	+17	-2.9	66	105	-.32	+3	+1.45	+13	+17.6	+15	+32	-6
	MH	\$EN	CW	Marb	RE	Fat	\$W	\$F	\$G	\$QG	\$YG	\$B
	-.1	-16.90	+27	+41	+80	+050	+95.93	+75.88	+29.53	+24.32	+5.21	+114.59

Decision may very well be the most feed efficient 5-star calving ease sire you can AI your heifers to in 2016! This outcross, Angus herd sire prospect combines low birth, high growth, big ribeye and one of the best feed efficiency profiles we have ever recorded on an Angus bull. His Top 0.1% Intake & 2% F:G makes him the compelling compliment to nearly any breeding program. He ranks better than the top 3% in the Angus Association for CED, BW, CEM, WW & \$W while ranking in the top 10% RE and \$F. The thing that really separates this bull from other popular Angus sires is that most bulls with his elite EPD profile rank in the 97% or worse on dry matter intake—he ranks in the top 1% and converted 3.9 to 1 feed to gain! This sound, attractive, super gentle young sire should be on everyone's short list!



Leachman Resolution, Grand sire of Decision, has been a pivotal sire when it comes to figuring out how to improve Feed Efficiency in the Angus breed. Finally we have a calving ease version of Resolution who is predicted to be higher growth and even more feed efficient! Make this grandson your "Decision" in 2016!

Owners: Leachman Cattle of Colorado, Top Line Cattle, & Byrd Cattle Company LLC, Woodhill Farms, & Quarter Circle U Ranch.

AAA Breed Average EPD's as of 12/1/15

CED	BW	WW	YW	DMI	YH	SC	Doc	HP	CEM	Milk	MW	MH	\$EN	CW	Marb	RE	Fat	\$W	\$F	\$G	\$B
6	1.2	49	88	.25	.5	.80	12	9.7	8	23	27	.3	-6.57	30	.49	.42	.014	45.74	43.59	29.18	102.33

Call (970) 444-BULL to Order Semen Today!



Leachman Elite Angus

G A R Further Progress 6389



Further Progress is the proven sleep at night calving ease Angus bull with top 1% \$Profit! He has been used very heavily within our system, as well as in Gardiner's herd, and has proven himself to be a range calving option for your heifers. His combination of 5-star calving ease, moderate mature size and radical carcass merit, will help you to capture a high premium in your heifers first year of production! Not only does Further Progress rank above the top 25% for 8 traits in the Angus Association, but he also has one of the very highest API scores in the Simmental association at 244!

Leachman \$Profit™
\$16,338
 \$Ranch \$47 • \$Feeder \$137
 Feed:Gain 0.10 Feed Intake 158

Owners: Leachman Cattle of Colorado, Gardiner Angus Ranch Inc, Top Line Cattle, & Watts Cattle Co.

B/R New Design 036 Sire: G A R Predestined G A R EXT 4206 S S Objective T510 OT26 Dam: G A R Objective 2345 GAR 1407 New Design 2413	Born: 8/18/09 Accuracy: High Calving Ease: ★★★★★ Disposition: 3 Homozygous Polled Homozygous Black	AAA#: 16497035 • DDC \$23/unit As low as \$20 at 50+ units 100+ units-Free Shipping!
---	---	--

AAA EPDs as of 12/1/15	CED	BW	WW	YW	DMI	YH	SC	Doc	HP	CEM	Milk	MW
	+20	-1.5	+50	+96	+92	+1	-.14	+7	+7.4	+19	+38	-12
	MH	\$EN	CW	Marb	RE	Fat	\$W	\$F	\$G	\$QG	\$YG	\$B
	+0	-25.13	+24	+1.55	+45	+0.045	+73.06	+40.52	+55.18	+52.85	+2.33	+102.00

KCF Bennett Automatic A348



Automatic is a DDF version of his sire, Progress, with less birth and more growth! He was our pick of Angus bulls in 2014 Knoll Crest Farm fall bull sale. This young calving ease bull has the great potential to significantly elevate marbling in your herd while also increasing REA, accounting for his 105 \$B value. Automatic posts excellent numbers across the board with Top: 1% CED, 2% BW, 35% YW, 20% Doc, 1% CEM, 4% Milk, 1% Marb, 10% RE, 15% \$W, 3% \$G, 1% QG, & 25% \$B. Phenotypically he is long-bodied, has great feet, and is mild-mannered.

Leachman \$Profit™
\$14,429*
 \$Ranch \$61 • \$Feeder \$98
 Feed:Gain -0.05 Feed Intake 81

*Note: ABC & Index values on this bull are based on Association/pedigree estimates.

Owners: Leachman Cattle of Colorado, Knoll Crest Farm, & Meinders Stock Farm.

GAR Predestined Sire: GAR Progress GAR Objective 2345 KCF Bennett Quality M22 Dam: KCF Quality P396 KCF Miss Total M343	Born: 9/20/13 Accuracy: LOW Calving Ease: ★★★★★ Disposition: 4 Homozygous Polled Homozygous Black	AAA#: 17849908 • DDF \$20/unit As low as \$18 at 50+ units 100+ units-Free Shipping!
--	--	--

AAA EPDs as of 12/1/15	CED	BW	WW	YW	DMI	YH	SC	Doc	HP	CEM	Milk	MW
	+17	-2.6	+48	+97	+59	+5	+19	+22	+10.3	+17	+31	+29
	MH	\$EN	CW	Marb	RE	Fat	\$W	\$F	\$G	\$QG	\$YG	\$B
	+2	-18.95	+31	+1.38	+0.81	+0.070	+59.47	+51.83	+51.05	+48.81	+2.24	+123.05

AAA Breed Average EPD's as of 12/1/15

CED	BW	WW	YW	DMI	YH	SC	Doc	HP	CEM	Milk	MW	MH	\$EN	CW	Marb	RE	Fat	\$W	\$F	\$G	\$B
6	1.2	49	88	.25	.5	.80	12	9.7	8	23	27	.3	-6.57	30	.49	.42	.014	45.74	43.59	29.18	102.33

Call (970) 444-BULL to Order Semen Today!



Calving Ease

High Accuracy

Calving Ease

Leachman Elite Angus



Shift is the low birth, highly feed efficient choice for capturing big quality grade premiums! Here is a true calving ease, (Top 1% CE & Top 1% BW), herd sire prospect that posts big numbers for marbling (Top 2% Marb), Feed Efficiency (Top 15% Intake), and most importantly his indexes: Top 2% \$QG, Top 15% \$G, **Top 1% \$Ranch, Top 14% \$Feeder & Top 1% \$Profit!** With a Angus \$Profit value ranking in the top one percentile in the entire Leachman gene pool, it is hard to look past this sire when making your 2016 heifer mating decisions. Shift G026Y has taken full advantage of every important

Leachman **Shift** G026Y



Calving Ease

Leachman \$Profit™
\$13,623
 \$Ranch \$72 • \$Feeder \$76
 Feed:Gain Feed Intake
-0.10 3

Owners: Leachman Cattle of Colorado, Hairpin Elite Nucleus, & Summitcrest Farms.

trait that his elite herd sire (Leachman Paradigm G289U) had to offer. We feel that Paradigm may have been one of the best Angus bulls of his time, but never got the chance to become popular due to his early death. This just may be the Paradigm son that we have been waiting for!

<p>LCC New Standard Sire: Leachman Paradigm G289U JLL Retail Product 6011 Woodhill Foresight Dam: LCoC Blackcap TG075 G A R Load Up 1802</p>	<p>Born: 3/2/11 Accuracy: LOW Calving Ease: ★★★★★ Disposition: 2.5 Homozygous Polled Homozygous Black</p>	<p>AAA#: 17143682 • AMF, DDF \$20/unit 50+ units \$18 As low as \$16 at 100+ Units 100+ units-Free Shipping!</p>
---	--	---

AAA EPDs as of 12/1/15	CED	BW	WW	YW	DMI	YH	SC	Doc	HP	CEM	Milk	MW
	+21	-5.7	+45	+90	+0.09	+4	+1.29	+7	+13.6	+17	+27	+15
	MH	\$EN	CW	Marb	RE	Fat	\$W	\$F	\$G	\$QG	\$YG	\$B
	+3	-8.32	+24	+1.21	+1.18	+0.063	+54.64	+53.28	+41.10	+45.43	-4.33	+107.05

Leachman \$Profit™
\$15,159
 \$Ranch \$47 • \$Feeder \$123
 Feed:Gain Feed Intake
-0.31 8

Leachman **Dark Knight** G043B

- 5-star calving ease sire with a \$15,159 \$Profit!
- Top 1% for CE, BW, CEM, \$Feeder & \$Profit! PLUS he's feed efficient, 5-star maternal, and has a great disposition.
- Stacked pedigree featuring: Paradigm, Protege, In Focus & New Design 878.

Owners: Leachman Cattle of Colorado, Meinders Stock Farms & C C Mulloy Ltd.

<p>Leachman Paradigm G289U Sire: Leachman Darkhorse G045X LCoC Ellen Erica TG082 LCoC Protege G263T Dam: LCoC Cornelia WG642 TOP Cornelia T622</p>	<p>Born: 3/11/14 Accuracy: LOW Calving Ease: ★★★★★ Disposition: 4 Homozygous Polled Homozygous Black</p>	<p>AAA#: 17815167 \$20/unit 50+ units \$18 As low as \$16 at 100+ Units 100+ units-Free Shipping!</p>
---	---	--

AAA EPDs as of 12/1/15	CED	BW	WW	YW	DMI	YH	SC	Doc	HP	CEM	Milk	MW
	+19	-3.4	+44	+93	+1.18	+2	+7.3	+18	+14.0	+17	+30	+26
	MH	\$EN	CW	Marb	RE	Fat	\$W	\$F	\$G	\$QG	\$YG	\$B
	+3	-15.61	+32	+7.3	+6.2	-0.13	+53.37	+57.28	+43.55	+34.87	+8.68	+127.08

AAA Breed Average EPD's as of 12/1/15

CED	BW	WW	YW	DMI	YH	SC	Doc	HP	CEM	Milk	MW	MH	\$EN	CW	Marb	RE	Fat	\$W	\$F	\$G	\$B
6	1.2	49	88	.25	.5	.80	12	9.7	8	23	27	.3	-6.57	30	.49	.42	.014	45.74	43.59	29.18	102.33

Call (970) 444-BULL to Order Semen Today!



From the Ranch to the Rail, \$Profit is Winning the Hearts of Cowmen...



ON THE RANCH:

- Cows that eat less.
- Calves that weigh more.
- Higher fertility.
- More pounds weaned per acre!



Mark your calendars for these upcoming Leachman sales:

- **Early Bird Online Sale**
February 10th, 2016
200 Bulls Sell!
- **Leachman Spring Bull & Female Sale**
March 21st, 2016
450 Bulls & 150 Heifers Sell!



IN THE LOT AND ON THE RAIL:

- Gain 4 or more and convert 4.9 or less.
- Grade over 80% choice.
- Reach 900+ lb. carcass weights.
- Calves that earn big premiums!



Lee Leachman, Partner
Ryan Peterson, Manager & Sales
2056 West County Road 70 · Fort Collins, CO
(970) 568-3983 · www.leachman.com



Private treaty bulls always available. Search online at www.leachman.com

Leachman Elite Composite Stabilizers

Leachman **Big Gene** L019X

Performance

High Accuracy



Leachman \$Profit™
\$12,130
 \$Ranch \$35 • \$Feeder \$102
 Feed:Gain Feed Intake
-0.01 97

Leachman ABCs as of 12/18/15	BW	WW	YW	MILK	SC	HT	MAT WT	REA	IMF	CAR WT	BF
	0	52	92	21	0.01	0.60	23	1.20	0.18	845	-0.01

<p><i>Hooks Shear Force 38K</i> Sire: Hooks Trinity 9T <i>Hooks Pearl 22-P</i> HOOKS SQUIRE 61S Dam: RGR Stabilizer UX437 RGR StabilizerSX011</p>	<p>Born: 3/3/10 Accuracy: HIGH Calving Ease: Disposition: 4 Homozygous Polled Non-Diluter</p>	<p>ASA#: 2884236 • 38B-62C \$25/unit As low as \$23 at 50+ units 100+ units-Free Shipping!</p>
--	--	--

ASA EPDs as of 12/11/15	CE	BW	WW	YW	MCE	Milk	MWW	Doc	CW	YG	Marb	Fat	REA	Shr	API	TI
	15.6	-0.2	69.6	101.7	13.7	10.5	45.3	9.4	29.8	-0.18	0.29	-0.012	0.71	-0.24	147.0	72.3

Big Gene is the best proven Red Trinity son to date! He combines power, performance, eye appeal, and high \$Profit in a balanced package. It's no wonder, as his pedigree stacks some of best genetics in the business. Big Gene's progeny come easy, grow very rapidly, and are loaded with dimension and style. In fact, very few bulls can compete with a birth to growth spread like his -- top 19% BW to top 3% YW. Big Gene has been used heavily in both commercial and seed stock herds since he was a stand out in the 2011 Leachman Spring Sale. His steer calves have topped superior video sales, and have gone on to earn substantial premiums in the feed yard. He also now has many progeny, both male and female, in production and they are proving to be very profitable animals.



Sire, Hooks Trinity 9T

Big Gene's Pedigree is stacked with excellence! His Mother is quickly proving to be a herd bull maker, and we all know about the success that his sire has in every facet of the beef industry.

Owners: Leachman Cattle of Colorado, Marc Reiger, Bob Shugert, Jim Andreasen, Joe Tugaw, Hayse Farms, Ague Dulce Argo, Focus Genetics, & Paringa Livestock.



ASA SimAngus EPD Average as of 12/11/15

CE	BW	WW	YW	MCE	Milk	MWW	CW	YG	Marb	Fat	REA	API	TI
10.4	0.7	60.0	91.8	7.9	21.7	51.6	25.4	-0.20	0.32	-0.034	0.59	120.7	67.00

Call (970) 444-BULL to Order Semen Today!

The Proof is Always in the Progeny!

Big Gene absolutely stole the show as a yearling, as he was the top seller in the 2011 Leachman Spring Sale...



and now he has gone on to be one of the most prolific Red Stabilizer sires in our company's history!



This Big Gene daughter was selected by the Beef Improvement Group from the United Kingdom to produce embryos for their program. The goal will be to use the bulls these embryos produce in the UK.



Big Gene consistently sires some of the most powerful bulls in the offering at sale time.

“By cowman's standards, Big Gene is one of the most satisfying bulls we have ever used. His calves are moderate birth, stout, sound, easy fleshing & gentle. Big Gene consistently sires no grief - high value cattle!”

**– Gary Rolland
Norton, KS**



“For 4 decades I have been AI'ing my cows to the best Red Angus & Red Stabilizer bulls Leachman's have offered. In 2015 I AI'd my cows to Big Gene for the 4th year in a row! I gotta stick with LCoC high dollar profit sires.”

**– Ben Arnold
Broadview, MT**



Typical Big Gene cow in production.



One of Ben's cows with her Big Gene Calf.



*Maze Ranch, Medicine Lodge, KS,
purchased this impressive Big Gene daughter
in the Leachman Elite Female sale in 2014.*

Leachman ABC EPD Average as of 12/18/15

BW	WW	YW	Milk	SC	HT	MWT	REA	IMF	BF	Intake	FG	\$Ranch	\$Feeder	\$Profit™
3.0	38	64	15	0.47	0.73	31.3	0.34	0.18	-0.01	38	0.01	\$24	\$40	\$5,802

Call (970) 444-BULL to Order Semen Today!



Leachman Elite Composite Stabilizers

Calving Ease

LCoC Total Package X571Y



Total Package is the proven choice for use on red heifers! He displays true thickness, structural correctness, and balance in a calving ease package. Along with his attractive appearance and mild-manner, he also posts impressive figures of Top 2% BW, Top 6% YW, better than top 1% Intake and F:G, & **Top 1% \$Ranch**. His respectable numbers across the board, have earned him a **Top 1% \$Profit** tabulation. Total Package is siring appealing progeny that will come easy, grow fast, eat less, and earn a higher profit on your ranch.

Leachman \$Profit™
\$13,432

\$Ranch \$55 • \$Feeder \$94

Feed:Gain Feed Intake
-0.38 -140



Total Package heifer calf at 5 months of age with her Stabilizer dam.

Owners: Leachman Cattle of Colorado, Marc Reiger, & Rempe Farms.

Leachman ABCs as of 12/18/15	BW	WW	YW	MILK	SC	HT	MAT WT	REA	IMF	CAR WT	BF
	-2.7	46	87	23	0.35	0.59	12	0.65	0.06	842	-0.02

Hooks Trinity 9T
Sire: LCoC Trinity X459W
GRU In Focus T202
LCoC Bennett X253T
Dam: RGR Stabilizer WU355
RGR Stabilizer TU080

Born: 3/13/11
Accuracy: MID
Calving Ease: ★★★★★
Disposition: 4
Homozygous Polled
Non-Diluter

ASA#: 2751932 • 58B-38C
\$23/unit
As low as \$20 at 50+ units
100+ units-Free Shipping!

New Release

Leachman Encore D060B



- Encore is the result of a stacked calving ease mating, yet he exhibits many other positive performance traits that are generally antagonistic to calving ease sires. We like it when a planned mating exceeds our expectation!
- 4-star phenotype, 4-star calving ease, 4-star maternal, 4-star feed/care, 4-star disposition - WOW!

Leachman \$Profit™
\$12,463

\$Ranch \$42 • \$Feeder \$97

Feed:Gain Feed Intake
-0.31 85

- Encore looks to join the list of Trinity sired herd bulls that have made him a legend.

Owners: Leachman Cattle of Colorado & Rempe Farms.

Leachman ABCs as of 12/18/15	BW	WW	YW	MILK	SC	HT	MAT WT	REA	IMF	CAR WT	BF
	-3.3	52	93	22	1.21	0.28	5	1.07	0.26	838	-0.01

Hooks Shear Force 38K
Sire: Hooks Trinity 9T
Hooks Pearl 22-P
Schuler Silver Bullet 4604P
Dam: LCoC Oh Princess SA056
LCoC Oh Princess MA063

Born: 2/16/14
Accuracy: Low
Calving Ease: ★★★★★
Disposition: 4
Homozygous Polled

62AR-38SM
\$20/unit
As low as \$18 at 50+ units
100+ units-Free Shipping!



Leachman ABC EPD Average as of 12/18/15

BW	WW	YW	Milk	SC	HT	MWT	REA	IMF	BF	Intake	FG	\$Ranch	\$Feeder	\$Profit™
3.0	38	64	15	0.47	0.73	31.3	0.34	0.18	-0.01	38	0.01	\$24	\$40	\$5,802

Call (970) 444-BULL to Order Semen Today!

Leachman Elite Composite Stabilizers

Forceful is the high \$Profit, low PAP, F1 SimAngus Red Stabilizer! He was the high selling bull in Leachman's 2010 Loma Sale, and for those of you that ranch in high altitudes, he scored a 41 on his PAP test at 8000 feet. Like his black counterparts, he purposefully blends the best Simmental and Angus genetics in the industry. It doesn't get much better than Shear Force X New Design 1407. You will be hard pressed to find this combination in a red package anywhere else. Forceful's top ASA percentiles: 3% CE, 5% BW, 25% MCE, 3% Milk, 15% YG, 5% IMF, 15% REA, 3% API, & 15% TI, plus he is 10% Intake, & 1% \$Profit.

Leachman Forceful L155W



Owners: Leachman Cattle of Colorado, Bob Shugert, & Blaine Evans.

Leachman \$Profit™
\$14,466
 \$Ranch \$44 • \$Feeder \$118
 Feed:Gain Feed Intake
0.01 -20

Leachman ABCs as of 12/18/15	BW	WW	YW	MILK	SC	HT	MAT WT	REA	IMF	CAR WT	BF
	0.3	47	76	29	-0.3	0.58	17	0.92	0.61	820	-0.01

Nichols Legacy G151 Sire: Hooks Shear Force 38K C&D Tracy Bon View New Design 1407 Dam: PG719 719 R K S R T	Born: 3/20/09 Accuracy: MID Calving Ease: Disposition: 4 Homozygous Polled Non-Diluter	ASA#: 2790569 • 50AN-50SM \$23/unit As low as \$20 at 50+ units 100+ units-Free Shipping!
--	---	---

ASA EPDs as of 12/11/15	CE	BW	WW	YW	MCE	Milk	MWW	Doc	CW	YG	Marb	Fat	REA	Shr	API	TI
	17.9	-2.8	51.3	78.8	10.1	30.6	56.2	12.4	12.9	-0.31	0.72	-0.022	0.82	-0.52	170.0	78.1

Leachman \$Profit™

\$15,619

\$Ranch \$50 • \$Feeder \$125

Feed:Gain Feed Intake
-0.14 -83

Owners: Leachman Cattle of Colorado, Bob Shugert, & Rempe Farms.

Leachman Blueprint J173B

- Highest \$Profit Red Stabilizer bull in the offering!
- Great mating for Trinity influenced cows.
- Solid growth, good IMF, huge REA, moderate mature weight, and super low intake.

RDDS Future Prototype 13M Sire: LCoC Prototype G140S LCC Hybrid J794 Hooks Shear Force 38K Dam: SHG Stabilizer XL149 T M L 1407 Clara 36L 554	Born: 3/20/14 Accuracy: Low Calving Ease: Disposition: 3 Homozygous Polled	56AN-38SM \$20/unit As low as \$18 at 50+ units 100+ units-Free Shipping!
--	--	---

Leachman ABCs as of 12/18/15	BW	WW	YW	MILK	SC	HT	MAT WT	REA	IMF	CAR WT	BF
	0.5	59	96	25	0.22	0.68	34	1.28	0.29	839	-0.01

No other Stabilizer bull calves easier! Gravity X015S is a true "sleep easy" calving ease bull that is living proof that the Stabilizer gene pool can serve in many roles. With 9 years of progeny born to prove his -7.6 BW EPD, there is no doubt that you can use this bull on nearly any heifer with confidence. Here is a sire that can moderate mature size, maintain hybrid vigor, and allow you to range calve your heifers.

LCoC Gravity X015S



Leachman \$Profit™
\$8,175
 \$Ranch \$72 • \$Feeder \$12
 Feed:Gain Feed Intake
-0.13 -80

Owners: Leachman Cattle of Colorado, & Marc Reiger.

Leachman ABCs as of 12/18/15	BW	WW	YW	MILK	SC	HT	MAT WT	REA	IMF	CAR WT	BF
	-7.6	16	43	26	1.13	-0.29	-84	-0.01	0.07	783	0.01

LCC Gravity B252L Sire: LBC Gravity 2509P HPL Miss Boo Boo 002K LCC Blk Stabilizer 4639K Dam: RGR Rangemaker PU009 RGR RM Dam J6404	Born: 2/25/06 Accuracy: HIGH Calving Ease: ★★★★★ Disposition: 4 Homozygous Polled	59B-39C \$18/unit As low as \$16 at 50+ units 100+ units-Free Shipping!
--	---	---

Leachman ABC EPD Average as of 12/18/15

BW	WW	YW	Milk	SC	HT	MWT	REA	IMF	BF	Intake	FG	\$Ranch	\$Feeder	\$Profit™
3.0	38	64	15	0.47	0.73	31.3	0.34	0.18	-0.01	38	0.01	\$24	\$40	\$5,802

Call (970) 444-BULL to Order Semen Today!



New Release

Calving Ease

High Accuracy



Lee L. Leachman

We were raised with Red Angus cattle.



Our family involvement in Red Angus started over forty years ago at Leachman Cattle Company in Billings. We were blessed to have owned and/or bred many of the breeds highest impact sires and countless national champions.

Leachman Pillars of the Red Angus Breed

Ankonian Dynamo
 Above Heaven
 Better Heavy
 Cherokee Canyon
 Cheyenne
 Chiefdom 2X
 Chinook
 Copper Rob
 Dynamite
 Dynamo 614
 EBV 3531
 Front Runner
 Grand Canyon
 H3554
 Heavenly
 Heavyweight



Leachman King Rob 8621

The original curve bender remains one of the strongest maternal sires in history and a source for feed efficiency.

Honest Abe
 Impressive Rob
 Lancer
 Major League
 Marias
 Monu 2X
 Monu 4X
 No Equal
 None Better
 R012 (4909)
 Red Spread
 Red Top
 Rimrock
 Robin Hood
 Robust
 Stamina

Today, we are utilizing our experience and the most advanced technology, \$Profit™, to *breed and find them even better!*

Our \$Profit Index improves all 20 traits, combined in one simple number, with the optimal emphasis on each trait including feed efficiency, carcass merit, and fertility.

We invite you to learn more about our program...



Good bulls run in our family!
 Call (970) 444-BULL to Order Semen Today



Leachman Elite Red Angus

Brown **Oracle** B112



New Release
Performance

Leachman \$Profit™
\$15,028*
 \$Ranch \$42 • \$Feeder \$128
 Feed:Gain Feed Intake
-0.04 54

BFCK CHEROKEE CNYN 4912
Sire: BROWN REVELATION P7021
BROWN MS VICILA M7799
BECKTON NEBULA P P707
Dam: BROWN MS P707 Y6648
BROWN MS JULIAN W6579

Born: 1/31/14
 Accuracy: LOW
 Calving Ease: ★★ ★
 Disposition: 4

RAAA#: 1703720 • OSF, MAF
 Commercial use only
 \$25/unit
As low as \$20 at 50+ units
100+ units-Free Shipping!

RAAA EPDs as of 12/1/15	HB	GM	CED	BW	WW	YW	MILK	ME	HPG	CEM	STAY	MARB	YG	CW	REA	FAT
	191	57	11	-3.7	80	126	24	4	12	-2	19	1.32	-0.08	39	0.90	0.02

"Oracle is the number ONE carcass bull in the entire breed! You will find that he is the ONLY animal in the Red Angus data base with this combination of marbling and ribeye area! He is so much more than just a carcass bull as he exhibits amazing growth, combined with excellent calving ease and stayability. What is so exciting is to see this much carcass merit in an animal that has such a deep pedigree for producing outstanding daughters."



Brown Revelation P7021 (Sire)

– Donnell Brown,
 R.A. Brown Ranch

"Our family policy for over 40 years has been to aggressively seek out the top prospects from the best breeders outside our program. The Brown family and ours have enjoyed many successful joint ventures on breeding stock over the years. In the case of Oracle, we have the additional pleasure of partnering with other progressive cattlemen as well as the breeders, Donnell and Kelli Brown. Oracle is absolutely our pick for one of the most unique Red Angus bulls we have ever sampled. He is already in our test herd program!"

– Lee Leachman,
 Leachman Cattle of Colorado.

*** Due to seed stock partnership agreements, Oracle semen is available for commercial use only. Progressive commercial cowmen, don't miss this opportunity!**

Owners: Leachman Cattle of Colorado, Brown Family Genetics, Lorenzen Ranch, Janssen Red Angus, Hueftle Red Angus, Schuler Red Angus, Rempe Farms, Meinders Stock Farms, Scott Meinders, Tom Scheidnes, Pete Mathews, Turner Red Angus, Watts Cattle Co, JST Angus, Mellima Farms Cattle.

*Note: ABC & Index values on this bull are based on Association/pedigree estimates.

RAAA EPD Average as of 12/1/15

HB	GM	CED	BW	WW	YW	MILK	ME	HPG	CEM	STAY	MARB	YG	CW	REA	FAT
104	49	5	-1.3	59	91	20	1	10	5	10	.47	0.04	22	.11	0.00

Call (970) 444-BULL to Order Semen Today!



Leachman Elite Red Angus

Performance

Brown **Real Deal** A7701



Leachman \$Profit™
\$14,381*
 \$Ranch \$37 • \$Feeder \$125
 Feed:Gain Feed Intake
0.01 78

Beckton Nebula P P707 Sire: Brown JYJ Redemption Y1334 JYJ Ms Jolene W16 Brown Revelation P7021 Dam: Brown Revelation X7597 Brown Ms Abigrace L7730	Born: 2/15/13 Accuracy: LOW Calving Ease: ★★ ★ Disposition: 4	RAAA#: 1607276 • MAF, OSF \$25/unit As low as \$20 at 50+ units 100+ units-Free Shipping!
--	--	---

RAAA EPDs as of 12/1/15	HB	GM	CED	BW	WW	YW	MILK	ME	HPG	CEM	STAY	MARB	YG	CW	REA	FAT
	167	55	10	-3.6	78	128	25	9	14	1	16	.99	0.03	41	0.50	0.01



Real Deal's pedigree is comprised of two of arguably the best animals the R.A. Brown Ranch has ever produced!

Brown Abigrace (MGD)
 Abigrace is one of the most legendary dams in the history of the Red Angus breed, and Redemption is one of the highest selling Red Angus bulls of all times at \$140,000.



Brown JYJ Redemption Y1334 (Sire)

We think this bull is the Real Deal for profitability in the Red Angus breed! At -3.6 BW to 128 YW, Real Deal has the best Red Angus birth to growth spread in our system! It doesn't stop there – he also has one of the best marbling and ribeye area combinations in the breed with top 2% Marb & 7% REA! Combine these unique antagonisms with top: 6% CED, 3% WW, 2% YW, 15% Milk, 4% HPG, 3% Stay & 5% CW all in one pedigree, and the outcome is one of the highest \$Profit sires in the breed. Not only does Real Deal look good on paper, but he is also smooth made with good feet and a great disposition. It is no wonder that this bull was Donnell Brown's pick out of his entire 2013 bull crop for use in his own herd as a yearling. If you are a Red Angus producer that is serious about profitability in your cow herd, don't overlook this impressive sire.

**Note: ABC & Index values on this bull are based on Association/pedigree estimates.*

Owners: Leachman Cattle of Colorado, Brown Family Genetics, Pete Mathews, Emerald Earth Cattle Co., Turner Red Angus, Watts Cattle Co., & Shieldknight Land and Cattle.



RAAA EPD Average as of 12/1/15

HB	GM	CED	BW	WW	YW	MILK	ME	HPG	CEM	STAY	MARB	YG	CW	REA	FAT
104	49	5	-1.3	59	91	20	1	10	5	10	.47	0.04	22	.11	0.00

Call (970) 444-BULL to Order Semen Today!

Leachman Elite Red Angus

HXC **Cannon Ball** 2200Z



Performance

Leachman \$Profit™
\$12,105
 \$Ranch \$13 • \$Feeder \$127
 Feed:Gain Feed Intake
-0.56 128

BECKTON NEBULA P P707 Sire: HXC BIG IRON 0024X HXC 825U BFCK CHEROKEE CNYN 4912 Dam: HXC ZIMA 338N HXC SARA LB107	Born: 2/2/12 Accuracy: LOW Calving Ease: Disposition: 4	RAAA#: 1544221 \$25/unit As low as \$20 at 50+ units 100+ units- Free Shipping!
--	--	--

RAAA EPDs as of 12/1/15	HB	GM	CED	BW	WW	YW	MILK	ME	HPG	CEM	STAY	MARB	YG	CW	REA	FAT
	129	52	2	0.0	88	133	22	5	11	-2	15	0.83	0.11	49	0.37	0.01

Cannon Ball has the highest growth of any bull in this entire offering regardless of breed, and is a phenotypic powerhouse!! Red Angus cattle have long been known for their easy fleshing ability, great composition, and mild manner... this bull is no exception! Cannon Ball is a big volume bull with lots of muscle shape and expression, very deep-bodied with a large scrotal circumference, and he packs all of this on a moderate frame. On top of

his powerful good looks, he offers a top 0.1% \$Profit in the Red Angus breed! We purchased this highly sought after Big Iron son in Hueftle's 2013 spring sale in a partnership with cooperator JST Angus. Cannon Ball is being used in the Leachman and Hueftle herds to develop highly profitable, powerful, and attractive Red Angus cattle. Take this opportunity to do the same thing in your herd.

Owners: Leachman Cattle of Colorado, Hueftle Cattle Co, & JST Angus.



Cannon Ball daughter sold in 2015 Leachman Spring Sale



Two Cannon Ball son's sold in the 2015 Leachman Spring Sale with tons of demention!

RAAA EPD Average as of 12/1/15

HB	GM	CED	BW	WW	YW	MILK	ME	HPG	CEM	STAY	MARB	YG	CW	REA	FAT
104	49	5	-1.3	59	91	20	1	10	5	10	.47	0.04	22	.11	0.00

Call (970) 444-BULL to Order Semen Today!



Leachman Elite Red Angus

LSF Nextpectation 0083X



Nextpectation receives high marks across the board! His top 1% Marb and top 14% REA, along with good growth figures leads to his top 3% Grid Master Index. Complementing his outstanding carcass merit, is his calves ability to convert feed to gain with top 7% F:G and 11% Intake. All of these traits combined make up a profitable scenario in the feed yard. If you're a Red Angus breeder serious about building feed efficiency, carcass merit and profitability into your program, this top Expectation son needs to be on your short list!

Leachman \$Profit™
\$12,311

\$Ranch \$33 • \$Feeder \$106

Feed:Gain Feed Intake
-0.16 -4



This Nextpectation son was the lead off bull in the 2015 Leachman Spring Sale.

Owners: Leachman Cattle of Colorado, Ludvigson Stock Farms, & Turner Red Angus.

Leachman Enterprise 1370H
Sire: LSF JBOB EXPECTATION 6034S
LSF Sweetness J1358 P4085
LCC NEW CHAPTER A705L
Dam: LSF CRYSTAL LA394 T7129
LSF CRYSTAL G1382 LA394

Born: 1/23/10
Accuracy: HIGH
Calving Ease:
Disposition: 4

RAAA#: 1368762 • MAF, OSF

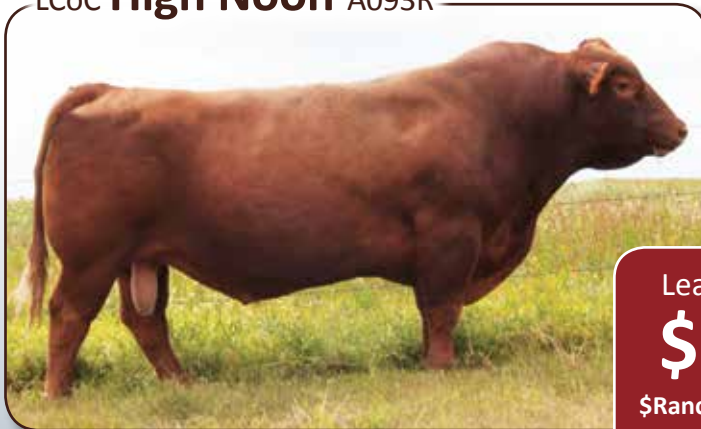
\$18/unit

As low as \$16 at 50+ units

100+ units-Free Shipping!

RAAA EPDs as of 12/1/15	HB	GM	CED	BW	WW	YW	MILK	ME	HPG	CEM	STAY	MARB	YG	CW	REA	FAT
	96	55	5	-3.2	66	104	22	1	13	3	7	1.33	-0.01	27	0.54	0.02

LCoC High Noon A093R



High Noon is still the "go-to" Red Angus sire to produce highly productive, feed efficient females with top carcass merit! He ranks in the top 2% on Intake in the Leachman Red Angus gene pool, and in the top 7% on IMF & 16% REA in the Red Angus Association. His daughters are broody, balanced, and efficient. High Noon has sired multiple herd bulls and many top replacement females in our system. He is an attractive, powerful, and proven Red Angus herd sire.

Leachman \$Profit™
\$10,570

\$Ranch \$20 • \$Feeder \$101

Feed:Gain Feed Intake
-0.08 -24



High Noon daughter, LCoC Firefly UA001
Top selling female in
2009 Leachman Spring Sale.

Owners: Leachman Cattle of Colorado; Shamrock Nook Red Angus, Bieber Red Angus, & Schuler Red Angus.

BJR MAKE MY DAY 981
Sire: BIEBER MAKE MIMI 7249
BIEBER SIRENA 6708
BFCK Cherokee Canyon 4912
Dam: SRN HI DEE 3021
SRN HI DEE 1005

Born: 1/5/05
Accuracy: HIGH
Calving Ease:
Disposition: 4

RAAA#: 1039801 • OSF

\$18/unit

As low as \$16 at 50+ units

100+ units-Free Shipping!

RAAA EPDs as of 12/1/15	HB	GM	CED	BW	WW	YW	MILK	ME	HPG	CEM	STAY	MARB	YG	CW	REA	FAT
	115	53	9	-0.8	66	115	16	15	6	7	12	0.91	0.00	38	0.49	0.00

RAAA EPD Average as of 12/1/15

HB	GM	CED	BW	WW	YW	MILK	ME	HPG	CEM	STAY	MARB	YG	CW	REA	FAT
104	49	5	-1.3	59	91	20	1	10	5	10	.47	0.04	22	.11	0.00

Call (970) 444-BULL to Order Semen Today!



Leachman Elite Red Angus

Leachman **Deniro** A090X



Calving Ease

High Accuracy

Leachman \$Profit™

\$8,374

\$Ranch \$43 • \$Feeder \$48

Feed:Gain Feed Intake
-0.12 -35

<p><i>BIEBER ROMERO 9136</i> Sire: LCOC ROMERO A007T <i>LORENZEN ABIGAL R5125</i> <i>Schuler Silver Bullet 4604P</i> Dam: SRN TYRA 7155 <i>WPRA HR TYRA 002</i></p>	<p>Born: 3/26/10 Accuracy: HIGH Calving Ease: ★★★★★ Disposition: 3</p>	<p>RAAA#: 1371233 • OSF \$20/unit As low as \$18 at 50+ units 100+ units-Free Shipping!</p>
---	--	--

RAAA EPDs as of 12/1/15	HB	GM	CED	BW	WW	YW	MILK	ME	HPG	CEM	STAY	MARB	YG	CW	REA	FAT
	135	51	13	-5.4	52	84	27	-1	6	8	11	0.22	-0.19	12	0.74	0.01

Deniro is the proven Red Angus leader for calving ease and feed efficiency! He is bred to be a calving ease specialist, but he is well-balanced enough to earn a top 6% Red Angus \$Profit tabulation. Equally as impressive for Red Angus breeders, not only does he post one of the lowest F:G EPD's in the breed, he is also records

a leading value for REA. Deniro will also help moderate mature size, add thickness, and improve foot structure. Discriminating cattlemen across the country have reported that Deniro is truly a 5-star calving ease bull, yet his calves have acceptable growth and dimension.

Owners: Leachman Cattle of Colorado, Emerald Earth Cattle Co, Ludvigson Stock Farms, & Schuler Red Angus.



An impressive Deniro son from the 2013 Leachman Spring Sale



Deniro sires beautiful Females! Here are two daughters that sold in previous Leachman Spring Sales.



RAAA EPD Average as of 12/1/15

HB	GM	CED	BW	WW	YW	MILK	ME	HPG	CEM	STAY	MARB	YG	CW	REA	FAT
104	49	5	-1.3	59	91	20	1	10	5	10	.47	0.04	22	.11	0.00

Call (970) 444-BULL to Order Semen Today!



Leachman Elite Charolais

Why Leachman Charolais? Our terminal cross strategies focus on maximizing profit, but we have no tolerance for the lack of selection pressure for the convenience traits. These include our focus on good disposition and reasonable birth weights. Our system also requires upward pressure on marbling and above average growth in our Charolais gene pool to assure your full profit potential. Simply put, Charolais will add 50 pounds to your calf crop – they are the best terminal cross option.

Performance

Leachman Professor P128Z



Owners: Leachman Cattle of Colorado & Bill Trampe.

Leachman \$Profit™
\$12,233

\$Ranch \$7 • \$Feeder \$137

Feed:Gain Feed Intake
-0.12 118

Professor is our pick for a moderate birth, high growth terminal cross sire! He is out of our top Charolais donor, Ms. America UP045, who has produced several outstanding herd bulls including White Gold. This herd sire prospect offers even more growth and power than White Gold. His sire, PhD is a stand out in the Charolais breed for feed efficiency and high \$Profit. This son carries on his traits with a top 0.1% \$Profit tabulation, in a top rated 5-star phenotypic package! Professor will sire feeder calves that grow very rapidly, have huge ribeyes, and hang a big carcass. For those of you who are high altitude customers, Professor scores very low on PAP.



Senior herd sire, **BJR Leachman PHD 738 P092T** (Professor's sire). Offers moderate birth, competitive growth, impressive muscling and outstanding F:G ratio. **PhD semen available at \$30/unit.**

NWMSU Doc Silver 362 PLD Sire: BJR Leachman Phd 738 P092T BJR Miss Easy Pro 404ETP LT Rio Bravo 3181 P Dam: LCoC Ms America UP045 LCoC Ms America RP005	Born: 10/16/12 Accuracy: LOW Calving Ease: Disposition: 3	AICA# EM839988 \$25/unit As low as \$20 at 50+ units 100+ units-Free Shipping!
--	--	--

AICA EPDs as of 12/1/15	CE	BW	WW	YW	Milk	MCE	MTL	SC	CW	REA	FAT	MARB	TSI
	6.0	-1.2	36	73	15	5.6	33	0.7	23	0.48	0.023	0.26	222.71

Performance

Leachman MSF 49er P013B



Leachman \$Profit™
\$9,659

\$Ranch \$10 • \$Feeder \$102

Feed:Gain Feed Intake
-0.05 48

- A standout since birth with an excellent phenotype, mild manner and unique EPD Profile.
- Posts ratios of 111 for BW, 101 YW, 101 REA, & 126 IMF!
- Stacked with a great pedigree: White Gold, DOC SILVER, RIO BRAVO, Schurrtop E423, GAIN & GRADE, Cigar.
- Very attractive Herd Sire prospect!

Owners: Leachman Cattle of Colorado & Meinders Stock Farm.

NWMSU Doc Silver 362 PLD Sire: Leachman White Gold P002X LCoC MS America UP045 WC Big Ben 9036 P Dam: MSF Impress ZP050 WCR MS Impress 0252 P	Born: 3/11/14 Accuracy: LOW Calving Ease: Disposition: 3	AICA# M844063 \$20/unit As low as \$18 at 50+ units 100+ units-Free Shipping!
--	---	---

AICA EPDs as of 12/1/15	CE	BW	WW	YW	Milk	MCE	MTL	SC	CW	REA	FAT	MARB	TSI
	9.4	-4.4	26	56	12	5.7	25	1.2	14	0.20	0.025	0.29	210.56



AICA EPD Average as of 12/1/15

CE	BW	WW	YW	MCE	SC	CW	REA	FAT	MARB	TSI
3.4	0.7	26.6	47.8	4.1	0.7	12.8	.23	0.001	0.02	191.29

Call (970) 444-BULL to Order Semen Today!

Cattlemen Serving Cattlemen - In All Environments!

Here at Leachman's we have a long standing commitment to building into our gene pool "specific trait" values for cattlemen that must focus on special management and environmental challenges. Whether it is our "at altitude" research work on low PAP sires for our high country ranchers or the development of "profit-driven" heat tolerant genetics for our southern and international breeders, we are working hard to make your operation **MORE \$Profitable!**

Leachmans have experience with blending heat tolerant breeds. In 1987, Jim and Lee Leachman worked with King Ranch to design their Santa Cruz cattle (Santa Gertrudis x Gelbvieh/Red Angus). In 1993, Leachman's started a program in Brazil called the Montana composite that mated over 50,000 Nelore and F1 Nelore x cattle to form a tropically adapted composite program. The Montana program later expanded into Paraguay, Bolivia, and northern Argentina. In addition, Lee has closely studied a variety of crossbreeding programs in tropical and sub-tropical environments including Florida, South Africa, and Australia.

25 years of experience have taught us the following:

- Optimal crossbreeding south of I-10 requires the use of Bos Indicus.
- Hybrids and composites allow the optimal blending of traits.
- In most southern US regions, the optimal level of Bos Indicus is between 3/16 and 3/8 Bos Indicus.
- Bos Indicus programs usually suffer from sub-optimal levels of marbling.
- All Bos Indicus cross programs should incorporate Angus and/or Red Angus.

Destiny 103A6 was selected by Charles Crochet as the most interesting Brangus bulls we could find for feed efficiency. Destiny's sire, Hombre is a proven efficient sire that was evaluated by Southern Cattle Company in their Brangus feed efficiency testing. The dam, Ruby X103 ranks in the lowest 4% of all Angus dams for feed intake. Destiny is not a single trait wonder and he has an optimal balance of calving ease, growth, carcass, and maternal traits. This Ultrablack bull delivers 3/16 Bos Indicus in an eye appealing package.

- Pedigree stacks elite, feed efficiency genetics.
- His Angus dam ranks in the top 20% for marbling and top 4% for \$Beef.
- Great disposition, sheath, confirmation, and foot structure.
- Large scrotal bull with strong libido and high semen volume.



Owners: Leachman Cattle of Colorado, Cavender Brangus, Ken Griner Cattle Co., Hardee Farms, Crochet Cattle Company LLC.

For Ultrablack and Brangus expertise, contact Charles Crochet at (337) 349-1639. Charles has known the Leachman family for three generations. His work at the Angus Association and Camp Cooley. Charles has been breeding an elite herd of high marbling, Ultrablack cattle for 29 years.

Suhns Affirmed 416N4 Sire: CB Hombre 541T3 Miss CC News Day 416E SAV Bismarck 5682 Dam: 44 Ruby X103 B/R Ruby 9114	Born: 2/23/13 Accuracy: LOW Calving Ease: Disposition: 3	Brangus# UB10238124 Commerical use only \$25/unit As low as \$20 at 50+ units 100+ units-Free Shipping!
---	---	--

Brangus EPDs as of 12/1/15	CED	BW	WW	YW	Milk	TM	CME	SC	US REA	US %IMF	US FAT
	5.7	-0.1	33	62	11	27	4.3	1.10	0.51	0.08	-0.022

**The most profitable sires
in the beef business...**



How to read this catalog



Leachman \$Profit™
\$16,342
 \$Ranch \$53 • \$Feeder \$130
 Feed Gain Feed Intake
5 -0.61 **6 -113**

Leachman ABCs as of 12/19/15	BW 7	WW 8	YW 9	MILK 10	SC 11	HT 12	MAT WT 13	REA 14	IME 15	CAR WT 16	BF 17
	0.5	63	100	17	0.52	0.41	35	0.98	0.65	827	0

Sire: Hooks Trinity 9T Hooks Pearl 22-P Dr J Analyst M250 Dam: LCoc Isabel UG390 Eagle 1531 Isabel 2221	Born: 2/10/12 Accuracy: MID 18 Calving Ease: 19 Disposition: 4 20 Homozygous Polled Homozygous Black	ASA#: 2698309 • 62AN-38SM 21 \$35/unit 50+ units \$30 22 As low as \$25 at 100+ Units 100+ units-Free Shipping!
---	--	---

ASA EPDs as of 12/1/15	CE	BW	WW	YW	MCE	Milk	MWW	Doc	CW	YG	Marb	Fat	REA	Shr	API	TI
	12.8	-0.6	80.6	125.9	7.5	15.4	55.7	12.0	43.7	-0.28	0.68	-0.020	1.13		148.6	89.3

1. Bull's Name
2. \$Profit™ EPD: One, simple, proven number that gives each trait a weight according to its impact on profit. See page 10 for additional information.
3. Leachman \$Ranch EPD: This is a Leachman profit index that predicts weaning profitability based on calving ease, weaning weight, maternal milk, cow cost, and FERTILITY. Based on producing 100 calves. This EPD assumes a slide on calf prices of \$10 / cwt.
4. \$Feeder: This number is expressed in terms of the bulls added value to the sale price of your feeder calves. It is expressed in \$ per head. Thus when comparing a +100 bull vs. a +50 bull, we expect the first bull to sire calves worth \$50 per head more at weaning (regardless of their weight).
5. F:G is the pedigree estimated feed to gain EPD that predicts the feedlot efficiency of the bulls offspring. A negative number means that the bull's progeny will feed more efficiently. Example: -0.50 means that the bulls progeny will require ½ pound less feed per pound of gain.
6. Intake: is an estimate of the amount of feed that the bull's progeny will consume over a 112 day feeding period. It is expressed in pounds. Animals with higher intake will consume more throughout their life. Animals with lower intake will consume less.

Leachman ABC's are EPD's that allow you to compare bulls across breeds. these are all shown on an Angus base.

7. Birth weight ABC expressed on an Angus scale.
8. Weaning weight ABC expressed on an Angus scale.
9. Yearling ABC expressed on an Angus scale.
10. Milk ABC expressed on an Angus scale. This is the best predictor of a bull's daughter's ability to milk. It measures the difference in weaning weight that will be produced between one bull's daughters and another bull's daughters due solely to milk.
11. Scrotal ABC: This predicts the scrotal circumference of progeny. This EPD is adjusted to an Angus base.
12. Height ABC: This predicts the yearling height of the sire's progeny. Adjusted to an Angus base.
13. Mature Weight ABC: Predicts the mature weight of daughters of the sire. Adjusted to an Angus base.
14. REA is the ultrasound based ABC for ribeye area expressed on an Angus scale.
15. IMF is the ultrasound based ABC for marbling expressed on an Angus scale.
16. Carcass Weight ABC: Predicts the carcass weight of steers out of the sire.
17. Back Fat ABC: Predicts the fat thickness of the sire's steer progeny at a year of age.
18. The sire's level of accuracy is determined by the number of progeny that have been evaluated in the Leachman System.
19. Calving Ease: The predicted calving ease if you use the bull on heifers. If there is a number in the brown box, this indicates the breed calculated calving ease direct EPD. In addition, we provide our Leachman estimated calving star system.
 - ★★★★ The easiest calving bulls in the industry.
 - ★★★ Use on smaller heifers with minimal assistance needed.
 - ★★ Use on larger heifers with some assistance expected.
 - If no stars are shown, the animal is recommended for use on cows only.

20. Disposition: Our traditional score of 1 – 5 on disposition. Score 5 bulls are bulls you can walk up to and touch. Score 3 is about average historically for Leachman bulls. However, we are making a concerted effort to improve disposition, so most bulls score 3 or higher. The bulls scored 2.5 or 2 are nervous and do not like to be in close quarters with people on foot – but they are great for big range operations.

21. Brd: Breed of the animal if two breeds or less are involved. If more than two breeds are in the animal, then the composition shows the percent British and the percent Continental, i.e. 58B 42C means 58% British and 42% Continental.

22. Price per unit (Minimum order of 10 units). If a volume discount is offered below, the minimum volume levels CAN be reached by mixing and matching multiple bulls except where the name of the bull indicates that volume discount is for that bull only (Divisible by 10 units). Shipping will vary by location and is not included in the semen price. Free Shipping discount is calculated on most economical shipping method. Shipments can be expedited but additional shipping cost will be passed to the customer.

Red highlighted boxes indicate that the EPD ranks in the top 25% of the respective breed for that trait.

Breed Association Terminology:

Weaned Calf Value (\$W) (Angus) - An index value expressed in dollars per head, is the expected average difference in future progeny performance for preweaning merit. \$W includes both revenue and cost adjustments associated with differences in birth weight, weaning direct growth, maternal milk, and mature cow size.

Beef Value (\$B) (Angus) - An index value expressed in dollars per head, is the expected average difference in future progeny performance for postweaning and carcass value compared to progeny of other sires.

HerdBuilder (HB) (Red Angus) - An Index calculated by using the following EPD's: Stay, Heifer Pregnancy, CE, Marb, YG, and growth.

GridMaster (GM) (Red Angus) - An Index calculated by using the following EPD's: Marb, YG, & Growth.

Maintenance Energy (ME) (Red Angus) - Predicts differences in daughters' maintenance energy requirements and is expressed in Mcal/Month.

Stayability (STAY) (Red Angus) - Predicts the probability of a bull's daughters remaining productive until at least six years of age.

API (Simmental) - Evaluates sires being used on the entire cowherd (bred to both Angus first-calf heifers and mature cows) with a portion of their daughters being retained for breeding and the steers and remaining heifers being put on feed and sold grade and yield. All EPDs, with the exception of tenderness, are taken into consideration in this index.

TI (Simmental) - Designed for evaluating sires' economic merit in situations where they are bred to mature Angus cows and all offspring are placed in the feedlot and sold grade and yield.

\$Profit™ Share

The Future of the Cattle Industry

The \$Profit index works. Seedstock breeders, commercial ranchers, feeders, and packers are taking notice. There is more profit potential in the cattle business today than ever. Today, it pays to raise the best genetics. Put \$Profit to work in your operation today!

Seedstock \$Profit Share

Are you making maximum genetic progress for profitability?

- \$Profit measures all inputs (feed intake, feed efficiency and cow size) and all outputs.
- Top seedstock producers are joining our alliance because they want:
 - Access to pooled, proprietary genetic information.
 - Aid in collecting and using feed efficiency data.
 - Improvement in their selection decisions.
 - Tools to help their commercial customers.



Replacement Heifer Selection

Are you keeping the females that will earn the most profit for you over their lifetime?

- Now, \$Profit can be used to predict the lifetime profit of each heifer you raise.
- \$Profit selection is the difference between keeping the average females versus keeping the best ones.
- You will add hundreds of dollars to your bottom line for each female you retain.

For more information, please contact **Kevin Unger**, \$Profit™ Share Coordinator, & Lincoln County Feed Yard Resources Manager.

Cell: **785-470-1131**

Email: kevin@leachman.com



Start Sharing \$Profit™ Today!

Are you a REPUTATION rancher?

- Do you search sale catalogs to find bulls that improve your herd's genetic merit?
- Do you buy registered bulls that improve your calves' feedlot and carcass performance?
- Do you use preventative vaccination and management procedures that improve your calves' health?
- Do you monitor your herd's mineral needs to improve your calves' receptiveness to nutrition?

Do you believe that your operation produces FEEDER CATTLE that are better than average?

Isn't it time to have your REPUTATION do all the talking on your PAYDAY?

Verified Beef's Reputation Feeder Cattle® program makes that happen!

Value-added efforts deserve to be recognized. To identify their effect, our certification steps are:

- Evaluate each herd's accumulated genetic merit potential.¹
- Predict the calves' inherent performance and carcass trait strengths.²
- Predict the calves' profit potential (Relative Value/cwt).³
- Verify the calves' management history, including health and nutrition.
- Promote these calves to feedlot buyers that prefer buying documented, performance cattle.

Our professional teamwork with Superior Livestock provides you the following advantages:

- National market recognition and unsurpassed access to value-added buyers.
- Priority enrollment available through your Superior rep.
- RFC spotlight identification in all sale-lot listings, with pre-sale buyer access to full documentation review.
- RFC spotlight summary of predicted trait performance and profit potential (online).

Reputation Feeder Cattle® is the best "payday confidence" that you can buy, for about a penny per pound.

Your REPUTATION can define the difference on PAYDAY!

Have us ride for your brand. Call Now!



Ralph Peterson (785) 577-0332 • Dar Giess (406) 850-4105 • Duane Gangwish (402) 750-8150

ReputationFeederCattle.com • (406) 867-2333

The Reputation Feeder Cattle® and Genetic Merit Scorecard® trademarks are wholly owned by Verified Beef, LLC. Copyright © 2015 Verified Beef, LLC. All Rights Reserved. U.S. Patent: 8,660,888



1: Verified Beef's Reputation Feeder Cattle® (RFC) program predicts feedlot performance based on EPD data supplied by breed associations. 2: RFC's star rankings predict sale group performance and carcass traits based solely on inherent genetic merit and do not account for factors such as weigh conditions, bloom, or other managerial or environmental effects. 3: RFC predicted profitability (Relative Value/cwt) is in comparison to cattle with industry average genetics, and is representative of total dollars of difference from purchase to slaughter. Actual realization of these values is dependent on market conditions, management strategies, and environmental effects, including plane of nutrition, days on feed, weather, etc. Verified Beef and Superior Livestock Auction do not guarantee or warranty the actual performance of the cattle. Together Everyone Achieves More.

Leachman Spring Bull & Female Sale

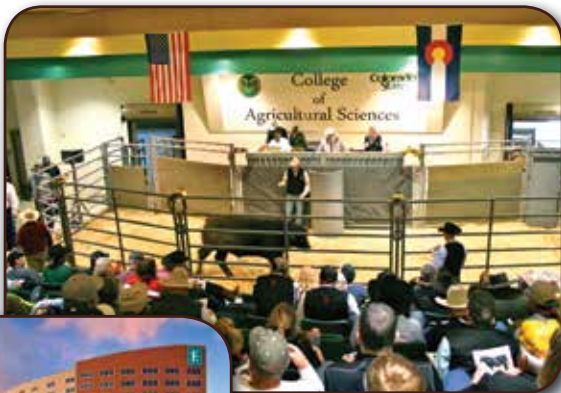
Saturday, March 19th

- Attend the CSU Bull Sale
- Join us for the Leachman Dinner Social at the Budweiser brewery.



Sunday, March 20th

- Cowboy Church – 9:00 a.m.
- Cowman's Seminar – 1:00 p.m.
- Cowman's Banquet & Concert – 6:00 p.m. (RSVP required)



Hotel Headquarters:
Embassy Suites Hotel
Loveland, CO
(970) 593-6200



Monday, March 21st Bull & Female Sale

9:00 a.m.

**CSU's ARDEC Center
Wellington, CO**

**450 Efficiency & \$Profit Bulls
100 Hairpin Females**

**Angus, Red Angus,
Stabilizer, and Charolais**

Call (970) 568-3983 or go online to www.leachman.com to learn more.



Lee Leachman, Partner
Ryan Peterson, Manager & Sales
2056 West County Road 70 • Fort Collins, CO
(970) 568-3983 • www.leachman.com





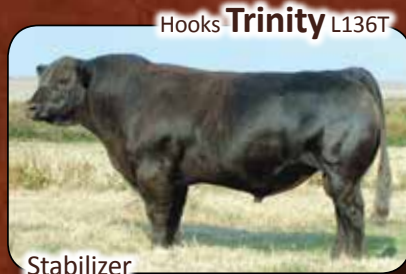
2056 West County Road 70
Fort Collins, CO 80524

LCoC Elite Calving Ease

We offer the most profitable & feed efficient, calving ease sires you will find to AI your heifers to in 2016!

Trinity has earned legendary status at our outfit as he consistently sires herd sires each year.

Calving Ease
☆☆☆☆



Truly a herd changer as he represents the moderation and efficiency that many cattlemen are seeking.

Calving Ease
☆☆☆☆☆



One of the most unique Angus bulls we have ever raised!

Calving Ease
☆☆☆☆☆



Proven calving ease herd sire with a huge ribeye and one of the lowest F:G values in the breed.

Calving Ease
☆☆☆☆☆



LCoC Elite Performance

Don't leave your mature cows behind. Use these AI sires to increase the profitability in your cow herd!

Our nominee for the most complete power bull in the business!



Consistently sires some of the most powerful grief-free cattle in the business.



Combines one of the highest \$Profit values with one of the lowest F:G and Intake tabulations of any sire we have ever used.



Highest growth of any bull in the entire Leachman system!



Volume discounts with mix/match options on most sires!