

The new Saab 94x



We come from a different place.

At Saab, we've always believed in the inspiration that comes from our unique Scandinavian spirit. With eyes firmly fixed on the distant horizon and an open, uncluttered landscape in front of us, it's easier to see more clearly – and to dream.

Now, the dream is reality.

The 9-4X is the new, much anticipated member of the Saab family. A crossover with sports tuning and a driving experience beyond compare, it has been created to take you on life's daily journeys in a style that is far from everyday.

From its elevated position you'll enjoy an uplifting feeling. A heightened sense of stability. And a more confident command of the road.

We come from a different place. Care to join us?



Inspiration is our business.

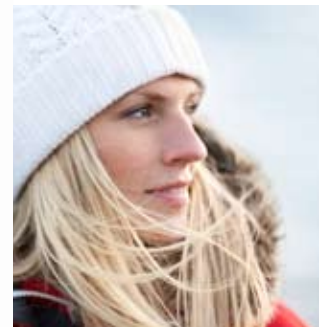
Of course it's a Saab. Distinctive styling elements such as the wraparound windshield, optional signature lighting and our unique grille leave no room for doubt. What is also beyond doubt is our passion for design. Most specifically, its ability to unite form and functionality and transform it into a rush of excitement and a smile on your face.

From its superb chassis with optional DriveSense™ technology to one of the automotive world's most advanced four-wheel drive systems, the new Saab 9-4X is characterised by premium quality. Inside, beauty lives in perfect balance with ergonomics, creating a driver environment you'll immediately call home. And outside? Well, just see for yourself.

For over 50 years, we've been in the Inspiration Business. Here in our Scandinavian home, it's all around us. Applying it is our pleasure. In the new Saab 9-4X, enjoying it is yours.

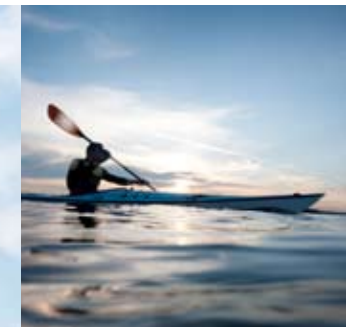
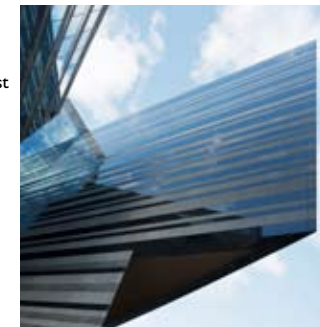
Design detail.

Detail has always been a Saab speciality. The new Saab 9-4X continues this tradition. From its optional panorama moonroof and front signature lighting to its front grille and ambient lighting, the new Saab 9-4X is tangible proof that this tradition is well and truly alive.



Saab XWD & eLSD.

Saab XWD™ (Cross-Wheel Drive) was developed in close co-operation with Swedish four-wheel drive specialist Haldex and is capable of integration with many of the car's other drive systems. By subtly balancing torque between the front and rear wheels and distributing power evenly and smoothly, Saab XWD™ and electronically controlled rear Limited Slip Differential (eLSD) are designed to let you enjoy a more stable relationship with the road.





Loading versatility.
Your day can change fast. How about your car?
Thanks to a luggage area featuring a U-rail with telescopic divider and an optional power tailgate, the new Saab 9-4X can carry just about anything – without comfort compromises.

DriveSense.
The advanced DriveSense™ system, is designed to help you drive more smoothly in bustling city traffic, maintain a firmer footing on the pavement and enjoy a challenging driving experience on a winding country road. Simply adjust the agility of the car for Comfort or Sport modes with a single twist of a knob.

Real life safety.
Ice, snow, rain and any number of potential hazards. Our safety engineers regularly encounter these on the way to work. As a result, safety in our cars is based on what actually happens on the road in real life conditions. Over the years, this has led to the introduction of a range of innovative features and Saab frequently being ranked among the world's safest cars.

Driving functionality.
Climb aboard. Find your perfect driving position by adjusting the 8-way power seat and optional power adjustable pedals. Choose our rear view camera and see what's behind you framed in the center driver's mirror when you engage reverse gear. You're in the crossover that enables more by demanding less.

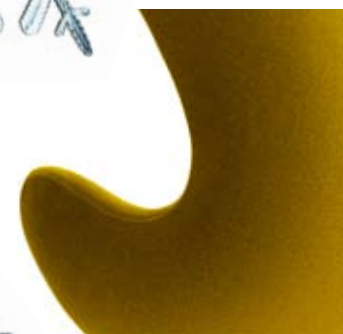


Find out more at:
saabusa.com

Join us on Facebook.
Read more about this car, keep up with the latest Saab news and enjoy special offers.



The cockpit.
Cross country or cross town, every journey should be enjoyed. That's why we equipped the new Saab 9-4X with Dual-zone Climate Control, a premium sound system and the option of Rear Seat Entertainment (RSE).



Engine program.
Under the hood of this sporty crossover, you can drop in a 265 hp, 3.0 V6 or 300 hp, 2.8 Turbo V6 powertrain. Either way, both options deliver driving pleasure and subtle strength in equal measure. And in Eco mode, the 2.8 Turbo V6 option also represents our uniquely Scandinavian take on respecting nature.





SAAB
move your mind™

saabusa.com

US Art. No. 94PREBRO Printed in U.S.A. Copyright Saab Automobile AB, Trollhättan, Sweden, 2010. This paper contains post-consumer recycled material and has earned the Mixed Sources label as designated by the Forest Stewardship Council. Please recycle. Particulars and illustrations in this brochure are based on the information that was valid at the time of final editing (October 2010). The model range, technical specifications, services and equipment may vary from one market to another and may be altered without prior notice. Pictures may show cars fitted with optional extra equipment. Please consult your Saab dealer for the latest information.

The new Saab 94x

Features and Specifications



Saab 9-4X Crossover

S= Standard, O = Option, NC = No Charge option, P = Package, — = Not available

Model	3.0i FWD	3.0i XWD	3.0i Premium FWD	3.0i Premium XWD	Aero XWD
Engine					
3.0L V6-cylinder, aluminum block and cylinder heads, 265 hp @5,500 rpm	S	S	S	S	—
2.8L V6-cylinder turbo, aluminum block and cylinder heads, 300 hp @5,300 rpm	—	—	—	—	S
Transmission					
6-speed automatic with manual shift mode, Front Wheel Drive (FWD)	S	—	S	—	—
6-speed automatic with manual shift mode, Cross-Wheel Drive (XWD)	—	S	—	S	—
6-speed automatic with manual shift mode and paddle shift, Cross-Wheel Drive (XWD)	—	—	—	—	S
Electronic limited slip rear differential (eLSD)	—	S	—	S	S
Chassis					
MacPherson strut front suspension with anti-roll bar	S	S	S	S	S
Linked H-Arm rear suspension with anti-roll bar	S	S	S	S	S
Four-wheel disc brakes, ventilated front & rear	S	S	S	S	S
DriveSense driver selectable chassis settings with Real Time Damping	—	—	—	—	S
Body & Exterior					
Wraparound windshield	S	S	S	S	S
Blacked-out A & B-pillars	S	S	S	S	S
Blacked-out side mirrors	S	S	S	S	S
Fuselage-inspired exterior design	S	S	S	S	S
Ice block-influenced front & rear lighting design	S	S	S	S	S
Rear LED signature lighting	S	S	S	S	S
Integrated rear roof spoiler	S	S	S	S	S
Halogen headlights	S	S	S	S	—
Bi-Xenon cornering headlights with signature front lighting	—	—	P	P	S
High-pressure headlight washers	—	—	S	S	S
Front fog lamps	—	—	—	—	S
Panoramic moonroof with power slide/tilt front section and power sunshade	O	O	O	O	O
18" 6-spoke alloy wheels with all-season tires	S	S	—	—	—
18" 6-spoke premium alloy wheels with all-season tires	—	—	S	S	—
20" 9-spoke alloy wheels with all-season tires	—	—	—	—	S
Twin exhaust tailpipes	S	S	S	S	S
Diamond Silver, metallic exterior color	NC	NC	NC	NC	NC
Zodiac Black, metallic exterior color	NC	NC	NC	NC	NC
Black, solid exterior color	NC	NC	NC	NC	NC
Birch White, solid exterior color	NC	NC	NC	NC	NC
Moorland Bronze, metallic exterior color	NC	NC	NC	NC	NC
Dark-tint rear windows	S	S	S	S	S
Towing package	O	O	O	O	O

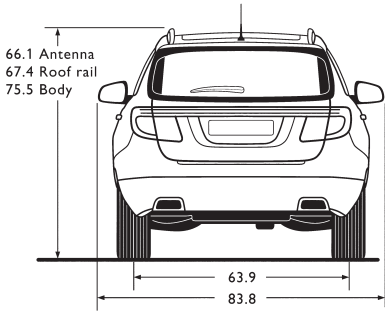
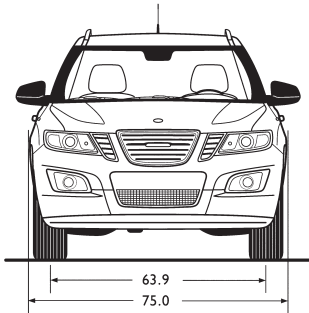
Model	3.0i FWD	3.0i XWD	3.0i Premium FWD	3.0i Premium XWD	Aero XWD
Cabin & Interior styling					
Leather-wrapped steering wheel & gearshift knob	S	S	S	S	—
Leather-wrapped sport steering wheel & gearshift knob	—	—	—	—	S
Shark Gray perforated leather-appointed seats and door inserts	NC	NC	NC	NC	NC
Jet Black perforated leather-appointed seats and door inserts	NC	NC	NC	NC	NC
Parchment perforated leather-appointed seats and door inserts	NC	NC	—	—	—
Signature Saab mesh-style air outlets with joy-stick directional control	S	S	S	S	S
Driver-focused cockpit theme	S	S	S	S	S
Wood-effect interior trim	S	S	S	S	—
Graphite fiber-effect interior trim	—	—	—	—	S
Ambient lighting	—	—	S	S	S
Comfort & Convenience					
Heated front seats	P	P	S	S	S
Ventilated front seats	—	—	S	S	S
Electronic parking brake	S	S	S	S	S
Power windows with express up, front	S	S	S	S	S
Dual-zone climate control system	S	S	S	S	S
Tri-zone climate control system	—	—	P	P	P
Two-tiered, cooled glove box	S	S	S	S	S
Auto-dimming interior mirror	P	P	S	S	S
Power folding exterior mirrors with memory	P	P	S	S	S
Automatic air recirculation sensor	—	—	S	S	S
Power, heated outside mirrors	S	S	S	S	S
Auto-dimming outside mirrors	P	P	S	S	S
Rear 60/40 split folding seat	S	S	S	S	S
Rear center armrest with storage & two cup holders and trunk pass-through	S	S	S	S	S
Rear-passenger rake adjustable seatbacks	S	S	S	S	S
Two front seat passenger dual-depth cup holders	S	S	S	S	S
Front & rear interior reading lamps	S	S	S	S	S
Tire inflator repair kit	S	S	S	S	S
Compact spare tire	O	O	O	O	O
Front console & trunk locations with 12V outlet	S	S	S	S	S
Dual level door pocket storage areas	S	S	S	S	S
Length adjustable center armrest w/ storage bin	S	S	S	S	S

Model	3.0i FWD	3.0i XWD	3.0i Premium FWD	3.0i Premium XWD	Aero XWD
Comfort & Convenience					
Power driver front seat with memory	S	S	S	S	S
Cruise control	S	S	S	S	S
Driver information center with trip computer	S	S	S	S	S
Rain-sensing windshield wipers	—	—	S	S	S
Remote keyless entry	S	S	—	—	—
Keyless ignition (Engine Start & Stop button)	S	S	S	S	S
Keyless passive entry	—	—	S	S	S
Remote start	—	—	S	S	S
U-Rail rear cargo management system	S	S	S	S	S
Universal remote garage door opener	—	—	S	S	S
Power passenger front seat	—	—	S	S	S
Power adjustable pedals	P	P	S	S	S
Power lift gate	P	P	S	S	S
Heated rear seats	—	—	P	P	P
Safety & Security					
SAHR (Saab Active Head Restraint), front	S	S	S	S	S
Dual stage driver & front passenger air bags	S	S	S	S	S
Front & rear side curtain air bags	S	S	S	S	S
Anti-theft alarm with engine immobilizer	S	S	S	S	S
Child seat LATCH system	S	S	S	S	S
Electronic child safety locks, rear doors	S	S	S	S	S
Anti-pinch side windows	S	S	S	S	S
Visual & audible front safety belt reminder	S	S	S	S	S
Front side-impact thorax air bags	S	S	S	S	S
Front passenger sensing system	S	S	S	S	S
Front & rear outboard safety belt pre-tensioners	S	S	S	S	S
Front & rear outboard safety belt force limiters	S	S	S	S	S
Safety belt height adjustment, front	S	S	S	S	S
Rollover sensor for side curtain air bags and safety belt pre-tensioners	S	S	S	S	S
Central locking remote control with panic alarm	S	S	S	S	S
Rear seat outboard head restraints	S	S	S	S	S
Anti-lock braking system (ABS)	S	S	S	S	S
Electronic Stability Program (ESP®)	S	S	S	S	S
Traction Control System (TCS)	S	S	S	S	S
Break-away foot pedals	S	S	S	S	S
Tire pressure monitor	S	S	S	S	S
Infotainment & Technology					
AM/FM radio with CD player	S	S	S	S	—
Navigation radio with 8" touch screen with hard disk drive for map data and 10GB music jukebox	—	—	O	O	S

Model	3.0i FWD	3.0i XWD	3.0i Premium FWD	3.0i Premium XWD	Aero XWD
USB connection for MP3/iPod®/mass storage devices	S	S	S	S	S
Auxiliary audio input	S	S	S	S	S
OnStar® Directions & Connections with 6 months of service	S	S	S	S	S
Bluetooth® hands-free phone system	S	S	S	S	S
XM® Satellite radio with three months trial period	S	S	S	S	S
Steering wheel-mounted controls for audio system	S	S	S	S	S
7-speaker audio system	S	S	—	—	—
10-speaker Bose® audio system with 5.1 surround sound capability	—	—	S	S	S
Rear seat audio system (Requires Navigation radio)	—	—	P	P	P
Rear seat entertainment system with dual 8" DVD screens and wireless headphones (Requires Navigation radio)	—	—	P	P	P
Front and rear park assist	—	—	P	P	S
Rearview camera (displayed in inside rearview mirror)	P	P	S	S	—
Rearview camera (displayed in Navigation screen)	—	—	P	P	S
Option Packages					
Power Package:	O	O	—	—	—
Auto-dimming interior mirror					
Auto-dimming outside mirrors					
Power folding exterior mirrors with memory					
Power liftgate					
Power adjustable pedals					
Rearview camera (displayed in inside rearview mirror)					
Heated front seats					
Technology Package:	—	—	O	O	—
Front and rear park assist					
Bi-Xenon cornering headlights with signature front lighting					
Rear Passenger Package: (Requires Navigation)	—	—	O	O	—
Tri-zone climate control system					
Rear seat audio system					
Rear seat entertainment system with dual 8" DVD screens and wireless headphones					
Heated rear seats					
Rear Passenger Package:	—	—	—	—	O
Tri-zone climate control system					
Rear seat audio system					
Rear seat entertainment system with dual 8" DVD screens and wireless headphones					
Heated rear seats					

S= Standard, O = Option, NC = No Charge option, P = Package, — = Not available

Model	3.0i FWD	3.0i XWD	3.0i Premium FWD	3.0i Premium XWD	Aero XWD
Specifications					
Engine					
3.0L V6-cylinder, aluminum block and cylinder heads, transverse	S	S	S	S	—
Displacement, 182.9 cu. in. (2997 cc) Bore & Stroke, 3.5×3.16 in. (89mm×80mm) Compression ratio, 11.7:1 Power, 265 hp @ 6,950 rpm (195 kW) Torque, 223 lb-ft. (302 Nm) @ 5,100 rpm 4-valves per cylinder Dual overhead camshafts with variable cam phasing Direct fuel injection					
EPA-Estimated fuel economy, mpg city/hwy	18/25	17/23	18/25	17/23	—
2.8L V6-cylinder turbo, aluminum block and cylinder heads, transverse					
Displacement, 170.4 cu. in. (2792 cc) Bore & Stroke, 3.5×2.9 in. (89mm ×74.8mm) Compression ratio, 9.5:1 Power, 300 hp @ 5,500 rpm (221 kW) Torque, 295 lb-ft. (400 Nm) @ 2,000 rpm 4-valves per cylinder Dual overhead camshafts with variable cam phasing Twin-scroll turbocharger					
EPA-estimated fuel economy, mpg city/hwy	—	—	—	—	15/22
Brakes					
Brake disc diameter, fr, 13.6 in. (345 mm), vented	S	S	S	S	S
Brake disc diameter, rr, 12.4 in. (315 mm), vented	S	S	S	S	S
Brake caliper diameter, fr, aluminum dual piston	S	S	S	S	S
Brake caliper diameter, rr, aluminum single piston	S	S	S	S	S
Steering					
Rack and pinion	S	S	S	S	S
Hydraulic power assist	S	S	S	S	—
Hydraulic power assist with variable effort	—	—	—	—	S
Turning circle 39.0 ft.	S	S	S	S	S
Turns lock-to-lock 2.84	S	S	S	S	S



Model	3.0i FWD	3.0i XWD	3.0i Premium FWD	3.0i Premium XWD	Aero XWD
Specifications					
Exterior Dimensions					
Overall length, 190.1 in. (4828 mm)	S	S	S	S	S
Overall width, 75.0 in. (1905 mm)	S	S	S	S	S
Overall height, 66.1 in. (1679 mm)	S	S	S	S	S
Wheelbase, 110.5 in. (2807 mm)	S	S	S	S	S
Front track, 63.9 in. (1622 mm)	S	S	S	S	S
Rear track, 63.9 in. (1623 mm)	S	S	S	S	S
Curb weight, 4250–4650 lbs. (1928–1975 kg)	S	S	S	S	S
Max Tow capacity, 3500 lbs. (1588 kg)	S	S	S	S	S
Cargo capacity, 29.2 cu. ft. (827 liters)	S	S	S	S	S
Ground clearance, 7.9 in. (200 mm)	S	S	S	S	S
Fuel tank capacity, 21.1 gal (80 L)	S	S	S	S	S
CD value, 0.38	S	S	S	S	S
Interior Dimensions					
Shoulder room, front 58.3 in. (1482 mm)	S	S	S	S	S
Shoulder room, rear 56.9 in. (1444 mm)	S	S	S	S	S
Leg room, front 41.2 in. (1047 mm)	S	S	S	S	S
Leg room, rear 36.4 in. (924 mm)	S	S	S	S	S
Headroom, front, without moonroof 39.9 in. (1013 mm)	S	S	S	S	S
Headroom, rear, without moonroof 38.8 in. (986 mm)	S	S	S	S	S

