

NORTHWESTERN
UNIVERSITY



Northwestern University
School of Communication
2240 Campus Drive
Evanston, Illinois 60208-3580
847/491-7023
www.communication.northwestern.edu





WE WILL DO THE NEXT BIG THING

One of the biggest things to happen on Northwestern's campus each year is the Dolphin Show. As America's largest student-produced musical, the show engages 150 students from across the University. Of course School of Communication students are very involved as producers and performers—including radio/television/film major Michael Norman Henry (C12), above, in last year's *Ragtime*. There are also engineering students designing sets, music students in the orchestra, and economics majors tracking the budget. It's a big production, with big ideals about giving an opportunity to anyone who wants to participate.

For the Dolphin Show and its partner organization, Arts Alliance at Northwestern, each year is a new challenge: an opportunity to stretch, learn, and prepare for the next big thing. Opportunities for greatness are what our students and faculty members are looking for. As you read through this report, you'll see that they're finding them.

Of course, many of the extraordinary opportunities our faculty and students make for themselves rely on resources made available through generous gifts from our alumni, friends, and community. We thank you for being part of last year's successes and hope you'll stay to see what's next for the School of Communication. It's going to be big.

Barbara J. O'Keefe, Dean

S	M	T	W	T	F	S
1 <small>New Year's Day</small>	2	3 <small>Winter quarter classes begin</small>	4	5	6	7
8	9	10	11	12	13	14
15	16 <small>Martin Luther King Jr. Day</small>	17	18	19	20	21
22	23 <small>Chinese New Year</small>	24	25	26	27 <small>The Bluest Eye, Louis, 8 p.m.</small>	28 <small>The Bluest Eye, Louis, 8 p.m.</small>
29 <small>The Bluest Eye, Louis, 2 p.m.</small>	30	31				

January



WE WILL CELEBRATE BIG SUCCESS

When the Northwestern Debate Society won its 14th National Debate Tournament, it might have seemed inevitable. Northwestern has the oldest continuous debate program in the nation, and our teams, after all, have brought home the NDT trophy more times than any other university. But following the departure and too-early death of the “winningest” coach in NDT history, former Northwestern director of forensics Scott Deatherage (GC94), the team wondered what was next.

“We dared to let ourselves imagine it was possible,” said current director Daniel Fitzmier (GC02, GC06). And it was. The 2011 NDT champs, Matthew Fisher and Stephanie Spies (both WCAS11), took top honors, and not just the big cup: Spies became the first woman in 23 years to be named the NDT’s top speaker, and Fisher has so many individual career NDT wins that his record is likely to last for decades.

What makes our team such big winners? Northwestern debaters learn to support each other during tournaments, and they never really stop. “We have the most supportive alumni in college debate,” said Fitzmier. “They support the team financially, and the young alumni come back and coach. It’s a circle, and everyone understands: if one team wins, everyone wins.”

5 <i>The Bluest Eye,</i> Louis, 2 p.m.	6	7	8	9 <i>The Bluest Eye,</i> Louis, 8 p.m.	10 <i>The Bluest Eye,</i> Louis, 8 p.m.	11 <i>The Bluest Eye,</i> Louis, 8 p.m.
12 <i>Spring Awakening,</i> Barber, 2 p.m.	13	14 Valentine's Day	15	16 <i>Spring Awakening,</i> Barber, 8 p.m.	17 <i>Spring Awakening,</i> Barber, 8 p.m.	18 Everybody Dances!, Wallis, 10 a.m. <i>Spring Awakening,</i> Barber, 8 p.m.
19 <i>Spring Awakening,</i> Barber, 2 p.m.	20 Presidents' Day	21	22	23 <i>Spring Awakening,</i> Barber, 8 p.m.	24 <i>Spring Awakening,</i> Barber, 8 p.m. Danceworks, Louis, 8 p.m.	25 <i>Spring Awakening,</i> Barber, 8 p.m. Danceworks, Louis, 8 p.m.
26 <i>Spring Awakening,</i> Barber, 2 p.m. Danceworks, Louis, 2 p.m.	27	28	29			

Give every year, make a difference every day.

February



Retouch image:
move red ball
down into frame

WE WILL TAKE BIG RISKS

If you're looking for a new challenge, you might as well go big. That's what adapter and director Mary Zimmerman (C82, GC85, GC94), Jaharis Family Professor of Performance Studies, thought when she decided to tackle her first musical—*Candide*, about an optimist's interactions with the worst of the world. An adapter accustomed to working with no script at all, Zimmerman had too much material for *Candide*: the score by Leonard Bernstein (H57) and multiple sets of books and lyrics, with new versions and additions accumulating since the musical's 1956 premiere. "It had a very checkered history," Zimmerman said. "There was way more music than you can do in one evening."

For the coproduction mounted by Chicago's Goodman Theatre and the Shakespeare Theatre Company of Washington, DC, Zimmerman returned to the original Voltaire novel. With sets by Daniel Ostling (GC96), costumes by Mara Blumenfeld (C92), and music direction by Doug Peck (WCAS03), Zimmerman's big risk has paid off in a big way: the show won five Joseph Jefferson Awards in Chicago and five Helen Hayes Awards in Washington before heading to Boston. But even this *Candide* is never quite finished. "Each step of the way, I cut 10 minutes," she said. "And it got better and better."

S M T W T F S

1 2 3

Danceworks, Louis, 8 p.m. Danceworks, Louis, 8 p.m. Danceworks, Louis, 8 p.m.

4 5 6 7 8 9 10

Danceworks, Louis, 2 p.m.

Winter quarter classes end

11 12 13 14 15 16 17

Daylight saving
time begins

St. Patrick's Day
Spring break begins

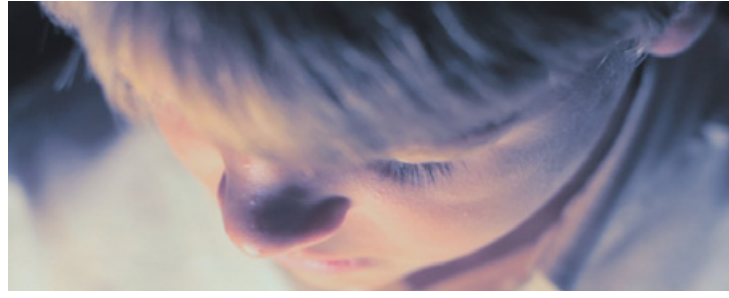
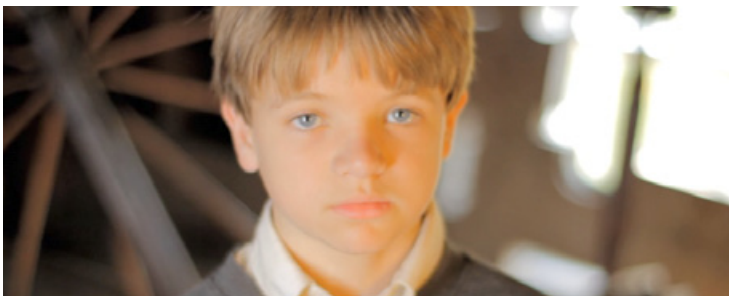
18 19 20 21 22 23 24

25 26 27 28 29 30 31

Spring quarter classes begin

March

Give every year, make a difference every day.



WE WILL EXPECT BIG THINGS

In the short film *King* by Hannah Wells (C11), eight-year-old Josiah might be the king, but it's a small realm. The boy lives with only his mother and father in a house enclosed by vast cornfields. Time, money, and desire all belong to a world far away—until Josiah decides his imagined adventures aren't enough. He needs the real thing, even if he has to leave the only home he's ever known.

For her script, Wells borrowed a story her mother had written but made it her own. With funding from the Northwestern University Women Filmmakers Alliance and a senior directing grant from the Department of Radio/Television/Film, she cast actors, directed on-location shoots, and edited her film with a team of peers. Along the way she started to relate pretty well to Josiah. "Because it's a story that I've more or less grown up with," said Wells, "it really held significance to make this film during my last year of school before entering the 'real world.'"

It's a big world out there, but funding for student groups such as NUWFA and Studio 22—which premiered Wells's film last spring—ensures our creative students a safe haven for trying out big plans.

S

1

Palm Sunday

8

Easter

15

The Little Prince,
Louis, 2 p.m.

22

Earth Day
The Little Prince,
Louis, 2 p.m.

29

Waa-Mu Show,
Cahn, 2 p.m

M

2

9

16

23

30

T

3

10

17

24

W

4

11

18

25

T

5

12

19

The Little Prince,
Louis, 7 p.m.

26

F

6

Good Friday
Passover begins
at sundown

13

Passover ends
The Little Prince,
Louis, 7 p.m.

20

The Little Prince,
Louis, 7 p.m.

27

Waa-Mu Show,
Cahn, 8 p.m.

S

7

14

The Little Prince,
Louis, 7 p.m.

21

The Little Prince,
Louis, 7 p.m.

28

Waa-Mu Show,
Cahn, 8 p.m.

Give every year, make a difference every day.

April



WE WILL KEEP BIG TRADITIONS

At Northwestern there's one sure-fire way for students to follow in big footsteps: participate in the Waa-Mu Show, Northwestern's annual musical revue. The show has been a campus tradition for 80 years, featuring the likes of Warren Beatty (C59), Ann-Margaret (C63), Charlotte Rae (C48), Paul Lynde (C46), and many other alumni who've made theatre a part of their careers and lives.

What's the next big thing when you're already the "greatest college show in America"? *What's Next?* was indeed the question asked by the 2011 Waa-Mu Show. The show's new director—David H. Bell, the Donald G. Robertson Director of Music Theatre in the Department of Theatre—let students deviate from the revue format to write material that spoke to their own experiences as Northwestern students. "*What's Next?* really tried to address the issues of students attempting to succeed while at school and figuring out what they will do afterwards," said Bell.

What's next for music theatre at Northwestern is an expansion of courses on music theatre writing and orchestration. "Waa-Mu for years has been a brilliant opportunity for student composers, lyricists, book writers, orchestrators, and vocal arrangers," said Bell. "And now it's the flagship of our fast-expanding music theatre curriculum."

Give every year, make a difference every day.

S	M	T	W	T	F	S
		1	2	3 Waa-Mu Show, Cahn, 8 p.m.	4 Waa-Mu Show, Cahn, 8 p.m.	5 Waa-Mu, Cahn, 2 & 8 p.m.
6 Waa-Mu Show, Cahn, 2 p.m.	7	8	9	10	11 Twelfth Night, Barber, 8 p.m.	12 Twelfth Night, Barber, 8 p.m.
13 Mother's Day Twelfth Night, Barber, 2 p.m.	14	15	16	17 Twelfth Night, Barber, 8 p.m.	18 Twelfth Night, Barber, 8 p.m.	19 Twelfth Night, Barber, 8 p.m.
20 Twelfth Night, Barber, 2 p.m.	21	22	23	24	25	26
27	28 Memorial Day	29	30	31		

May



WE WILL LIVE THE BIG TRUTHS

When Stephen Colbert (C86, H11) returned to campus to accept an honorary degree and address the graduating class of 2011, his audience expected “truthiness.”

Dubbing himself “basic cable’s second most popular fake newsman,” Colbert didn’t disappoint. The political satirist brought his alter ego to entertain the “Northwestern Nation”—but also mined his experience in improvisation to give some serious advice. In improv, he said, “no one is leading. You’re all following the follower, serving the servant. You cannot win in improv. And life is an improvisation.”

Life can be funny, and funny can be life. Just ask the students in NSTV (Northwestern Sketch TV), who last year won a College Television Award—a “college Emmy.” Or check in with Michele Ganeless (C87), president of Comedy Central (Colbert’s home network), who’s made a career out of helping other people be funny—and real. Ganeless, with Academy Award winner Luke Matheny (J97), playwright and new radio/television/film faculty member Thomas Bradshaw, and Chicago writer, actor, and improv artist Holly Laurent, spoke to School of Communication students at our annual Writers Panel. Said Ganeless, “[The writers] in my career I have seen become successful are really true to who they are.”

S

M

T

W

T

F

S

1

2

Spring quarter classes end

3

4

5

6

7

8

9

10

11

12

13

14

Flag Day

15

Commencement,
Ryan Field, 10:30 a.m.

16

School of Communication
convocations, Pick-Staiger,
1:30 & 5 p.m.

17

Father’s Day

18

Summer Session
begins

19

20

21

22

23

24

25

26

27

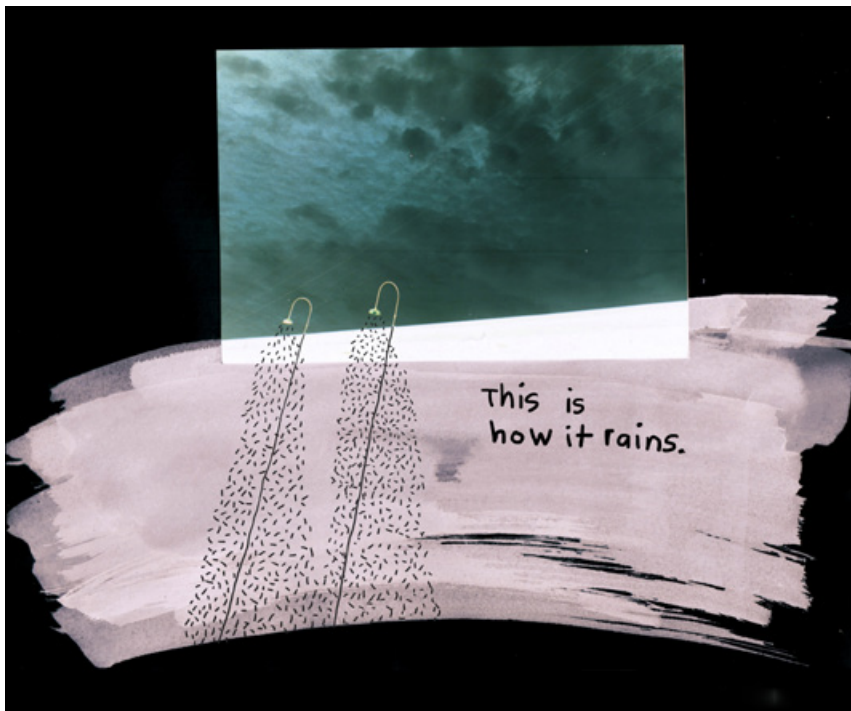
28

29

30

Give every year, make a difference every day.

June



WE WILL SEE THE BIG PICTURE

A lamppost in the park. Strangers reading on the train. A chair—sketched while waiting for a friend. Ozge Samanci, assistant professor of radio/television/film, documents the small things at her website www.ordinarycomics.com. Recycling grocery bags and the backs of old photographs into minicanvases, Samanci makes ordinary things seem extraordinary. “*Ordinary Things* is a daily exercise in which I capture an insignificant moment of daily life and make it significant,” she said. “In one day there are many wonderful moments that could turn into a comic collage for me. When I pick an ordinary moment and focus on it, that moment ceases to be ordinary. Actually, nothing in life is ordinary.”

Samanci is just one of a number of extraordinary new scholars who have joined the School of Communication in the last few years. We’ve added experts in dramaturgy, devised theatre, autism, sound media, performance and law, African American film-making, media anthropology, and popular culture, plus a full panel of playwrights and screenwriters. Bright, energetic, and engaged in their professional communities, these new scholars bring diverse perspectives into our classrooms and give our students big ideas about the kind of work they someday might do.

S	M	T	W	T	F	S
1	2	3	4 <small>Independence Day</small>	5	6	7
8	9	10	11	12	13	14
15	16	17	18	19 <small>Ramadan begins at sundown</small>	20	21
22	23	24	25	26	27	28
29	30	31				

Six-week Summer Session ends

Give every year, make a difference every day.

July



WE WILL PLAY A BIG ROLE

All the world's a stage. At least it might have seemed that way when the lights came up on California Shakespeare Theater's Bruns Memorial Ampitheater, where a backdrop of rolling hills set a majestic stage for the latest work by writer-composer-director Amanda Dehnert, assistant professor of theatre. Inspired by Shakespeare's *Two Gentlemen of Verona*, Dehnert's *The Verona Project* isn't just a play—it's an eight-person rock band. It's also a coming-out and coming-of-age story as timeless as the Bard himself. "Verona's characters are trying to figure out who they are as individuals and who they want to become," said Dehnert. "This adaptation works like a modern once-upon-a-time."

Verona's bigger-than-life feel got a boost from the stage design of Daniel Ostling (GC96) and the music production and sound design of Joshua Horvath—both also members of the theatre faculty. Melissa Torchia (GC11) designed the rock'n'roll costumes, and Nate Trinrud (C11) played Valentine (above, far right), a young man looking for big love. "I really love the characters Shakespeare created," said Dehnert. "They have inspired me to dive deeper into the various natures of love, loss, and self-discovery." In other words, the biggest stories out there.

S	M	T	W	T	F	S
			1	2	3	4
5	6	7	8	9	10	11
12	13	14	15	16	17	18
19	20	21	22	23	24	25
26	27	28	29	30	31	

Eight-week Summer Session ends

Ramadan ends

Give every year, make a difference every day.

August



WE WILL MAKE A BIG DIFFERENCE

If young children were motivated by something other than rewards like candy and toys, that information might affect how parents and teachers get children to learn. That's the thinking behind a study by the School of Communication's Early Learning Laboratory, run by Amy Booth, associate professor in the Roxelyn and Richard Pepper Department of Communication Sciences and Disorders. Booth's lab assistants, including Aubry Alvarez (above) and other students, work with volunteer families to test what motivates children to learn. Children choose how long they participate, staying in the game longer when they're offered information about the foreign objects and make-believe animals they're shown. "In classrooms and at home, we think of tangible rewards, but kids have an innate curiosity," said Booth. "New, meaningful, causally rich information is more motivating than stickers."

Booth's work has big implications for educational and clinical best practices, making it translational research—where research is turned "from bench to bedside" for the benefit of the larger world. Our faculty excel at translational research: designing better hearing aids and nutritional food labeling, studying how older adults learn and how engineers use simulation technology, developing context-aware technology to provide tailored assistance for patients with depressive disorders—projects that may someday make a big difference.

Give every year, make a difference every day.

S	M	T	W	T	F	S
						1
2	3 <small>Labor Day</small>	4	5	6	7	8
9	10	11	12	13	14	15
16 <small>Rosh Hashanah begins at sundown</small>	17 <small>Wildcat Welcome begins</small>	18 <small>Rosh Hashanah ends</small>	19	20	21	22
23	24 <small>Wildcat Welcome ends</small>	25 <small>Fall quarter classes begin Yom Kippur begins at sundown</small>	26 <small>Yom Kippur ends</small>	27	28	29
30						

September



WE WILL TAKE BIG LEAPS

Danceworks 2011 focused on themes of community, connection, and celebration—fittingly, since Danceworks is the School of Communication’s annual celebration of the dance program’s collaborative community. The show featured a unique blend of the familiar and the forward-thinking: love-struck ladies, crooning gents, scattin’ tap dancers, and head-banging cowboys. The show also included “I Hear Rivers” (above), choreographed by Munjulika Rahman, a PhD candidate in the Department of Performance Studies. The new work was based on Rahman’s ethnographic research on Bangladeshi urban folk dance.

“This piece, like many in the Danceworks repertory, engaged the student-performers in generating and developing performance material,” said Annie Beserra (WCAS97), lecturer in dance and Danceworks 2011’s artistic director, who choreographed the show with fellow School of Communication faculty members Joel Valentin-Martinez, Molly Shanahan, and Laura Wade and visiting artists Kristina Kasper and Joel Hall. “Throughout the rehearsal process, choreographers, dancers, and designers came together to see the works in progress and to ask questions and offer feedback.” The show also got a big public debut online: a Danceworks 2011 blog shared rehearsal photos and videos and let the larger community join the discussion.

S	M	T	W	T	F	S
	1	2	3	4	5	6
7	8 <small>Columbus Day</small>	9	10	11	12	13
14	15	16	17	18	19	20
21	22 <small>Homecoming Week begins</small>	23	24	25	26 <small>Reunion Weekend begins</small>	27 <small>Homecoming Week and Reunion Weekend end</small>
28	29	30	31 <small>Halloween</small>			

October

Give every year, make a difference every day.



WE WILL SUPPORT BIG IDEAS

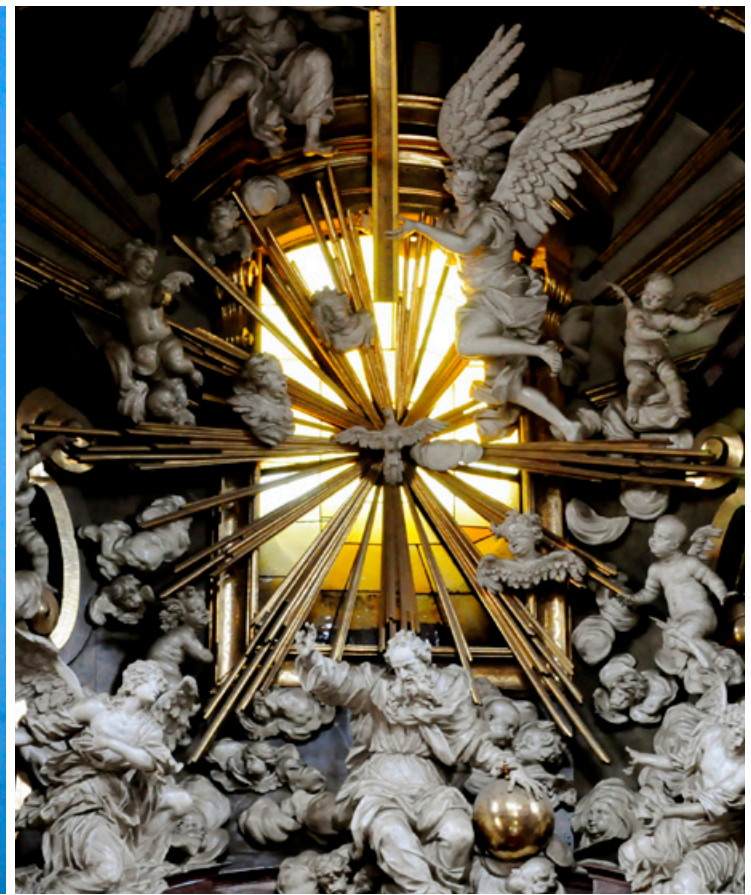
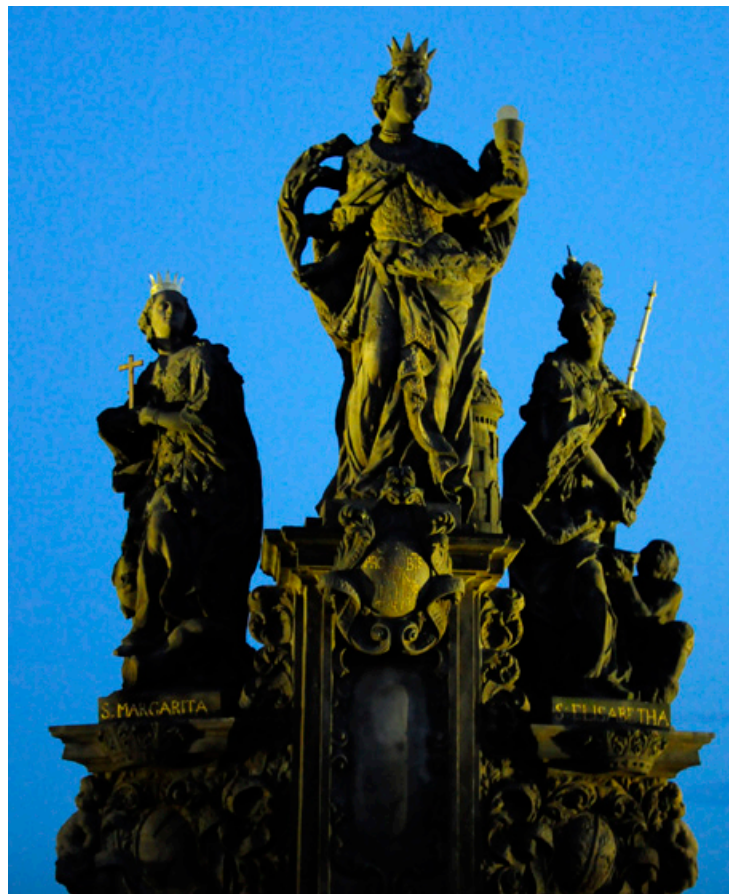
How do you build a social critique of the pop-culture mythic ideal of a “traditional” family? If you’re Eric Patrick, associate professor of radio/television/film, you do it piece by painstaking piece. Patrick constructed his film *Retrocognition* as a form of archaeology, digging through relics from earlier times to create an animated collage. First he pieced together audio snippets from World War II-era radio dramas for the soundtrack, then cut up photographs of real people and scenes from cartoons and sitcoms to reconfigure them into a matching shattered visual experience. The effect? “Schizophrenic,” said Patrick. “I hope it leads to an unsettling experience of watching something that has the aesthetic of vintage media sitcoms, yet appears and sounds like it’s been hacked to pieces and put back together to reveal a dark alternative to the initial intent.”

Patrick received support for his film through the School of Communication’s Innovations Grant program. Innovations Grants are small starter grants that encourage faculty members to engage undergraduate students in their research and creative projects. The results: not only do ambitious faculty projects get finished sooner, but our students start to have big ideas of their own.

S	M	T	W	T	F	S
				1	2	3
4 <small>Daylight saving time ends</small>	5	6	7	8	9	10
11 <small>Veterans Day</small>	12	13	14	15	16	17
18	19	20	21	22 <small>Thanksgiving</small>	23	24
25	26	27	28	29	30	

November

Give every year, make a difference every day.



WE WILL ENCOURAGE BIG DREAMS

Mary Zimmerman (C82, GC85, GC94), Jaharis Family Professor of Performance Studies, knew that the Prague Quadrennial was a life changer. Every four years, 40,000 visitors descend on Prague to share and see work in theatre costuming, sound, lighting, and scenic design from around the world. Zimmerman dreamed of taking her students. Last year—funded by the School of Communication and arranged through the school’s Office of External Programs, Internships, and Career Services—23 students had their ideas about theatre turned inside out. “I’m not a designer,” said theatre major Hannah Greene (C12), who acts and directs. “But the trip changed the way I think about theatre as a whole.”

The group also saw the sights, of course (above, photos by MFA stage design student Sarah Watkins of the astrological clock in Old Town Square; the Charles Bridge statue of Saints Barbara, Margaret, and Elizabeth; and the interior of St. Nicholas Church in Old Town Square). But a bigger learning experience might have come from listening to two of their teachers—costume designer and assistant professor of theatre Ana Kuzmanic (GC04) and scenic designer and visiting assistant professor Walt Spangler—present their work from the Goodman Theatre’s *Desire Under the Elms* on the world stage. Big dreams, it seems, do come true.

Give every year, make a difference every day.

S	M	T	W	T	F	S
						1
2	3	4	5	6	7	8
9	10	11	12	13	14	15
16	17	18	19	20	21	22
23	24	25	26	27	28	29
30	31					

Fall quarter classes end
Hanukkah begins
at sundown

Winter break begins

Hanukkah ends

Christmas Eve

Christmas Day

Kwanzaa begins

New Year's Eve

December

ANNIE MAY SWIFT SOCIETY • *The following individuals and organizations made donations of \$1,000 or more between September 1, 2010, and August 31, 2011. We apologize for any errors or omissions.*

Founder’s Circle (\$50,000 or more) • Baldwin Family Foundation Trust/Eleanor R. Baldwin (GSESP66) • Estate of Marie E. Brittin (C41, GC49)† • Community Foundation for the National Capital Region/John Delaney and April McClain-Delaney (C86) • William W. Donnell (J66, GJ67) • Estate of Walker P. Eastman† • Estate of Marjorie Hoffman Hagan (C34)*† • Robert N. (C57) and Kaye Karlan (WCAS57) Hiatt* • Michael B. (WCAS72, G73) and Jane Steiner (C86) Hoffman • Lambert Family Foundation/Bill G. and Sheila S. Lambert • G. Harold & Leila Mathers Foundation • Johnny Mercer Foundation • Northwestern Memorial Foundation/W. Rockwell Wirtz (C75) • Estate of Julia C. Piquette (C48, GC52, GC63)† • Schwab Fund for Charitable Giving/Todd M. (WCAS87) and Ruth Warren • Estate of Ralph Sundin (EB36)† • Wirtz Corporation/W. Rockwell Wirtz (C75)

President’s Circle (\$25,000–49,999) • Gregory G. Berlanti (C94) • Coastal Community Foundation of South Carolina • Colbert Family Fund of Coastal Community Foundation/Stephen T. (C87) and Evelyn McGee Colbert • Owen L. Coon Foundation/Eleanor Coon and Richard O. (WCAS69, L77) Briggs • Estate of Chermaine Ryser Davis (C50)† • Global Philanthropy Partnership • Whitney Kroenke (C00) • David S. Lefkowitz (C82)* • Estate of Edwin Gene Lewis† • Lee Perlman and Linda Riefberg • Arthur Schuman, Inc./Neal H. Schuman (C72) • John H. II (WCAS62) and Patricia Pesek (C61) Shields • Surdna Foundation

Dean’s Circle (\$10,000–24,999) • Joel and Nancy Mills (GSESP86) Barnett • Bindley Family Foundation/B. Scott Bindley (C88), William E. Bindley, William Bindley (C84), and Catherine Ann Edmonds • Margaret S. and Philip D. Block Jr. Family Foundation/Philip D. III and Judith Stofer (C63) Block* • John P. and Anne Churchill (C78) Coffey • Estate of Milton Colman (EB39)† • Robert D. (C55) and Jean S.† Conrad • Cookie Jar Foundation/Douglas R. (WCAS73, KSM76) and Susan Pierson (C77) Conant • John Crouse • Fidelity Investments Charitable Gift Fund/Barbara D. Molotsky (WCAS65) • Stuart and Bess Goldring • Paul Guyardo (C83, GJ84) • E. F. Harris Family Foundation/Edward F. Harris (GMcC52) • Marg Helgenberger (C82) • Helmerich Foundation/Walter H. III and Peggy Varnadow (C48) Helmerich* • Knowles Foundation/Nancy Knowles* • A. J. Walton & A. Walton Kroenke Charitable Foundation/Audrey Jane Walton • Garry K. (J56) and Barbara Wells Marshall • James L. Martin and Deborah Hayes (C71, GC73)* • Garry (C68) and Karla Borud Mathiason • Laverne A. McKinnon (C87) • Vincent Jr. and Pamela Nuytkens (C84, GC85) Pagano • Stephen and Wendy Rosenthal (GC81) Schall • Shaw Family Supporting Organization, Robert E. (McC70, KSM81) and Charlene Heuboski (WCAS70) Shaw • Stuart H. (C78, GC78) and Rose Singer • TR Family Trust/Thomas Hanks and Margarita Wilson • Clarke J. and Susan Anderson (C62) Vetrone • Audrey Jane Walton Trust/Audrey Jane Walton • Kevin (WCAS84) and Tina Willens

John Evans Circle (\$5,000–9,999) • Bruce A. Albert (C92) • American Bar Endowment/Frazier X. (WCAS64) and Mary Creekmore (C63) Henke • Andrew Family Foundation • Ronald J. (EB54) and Linda J. Aronberg • Henry S. and Leigh Buchanan Bienen • William M. Chardack Charitable Lead Trust/Olympia Josephine Portale (C10) • Chicago Drama League • Denver Foundation • Fein Foundation/Adam R. Fein and Linda Keithan-Fein • Carlos R. (WCAS78) and Karen Flores • Connie Frank Foundation/Paul Stuart (C89) and Ashley Frank • Goldman Sachs Philanthropy Fund • David L. (C90) and Courtney Stevens (C90) Hollander • Michael and Suzanne Hupy • Jeffrey A. Jacobs (C85, GJ87) • Emily Jefferson (C53) • Joyva Corporation/Richard (C85) and Leslye Sussman (WCAS85) Radutzky • Lainie M. Kaye (C87) • John D. Logan (C83) • David Earl Mumford (C76) • Peter Nichols (C78, GC78)* • John O. Peters • Gary Schermerhorn and Miriam Esteve • Loretta B. Sweeney Trust/Loretta Bingham Sweeney (C53) • Thorn River Foundation

Fellows (\$2,500–4,999) • Clay T. (McC88, GMcC92, KSM92) and Karen Griffin (C88) Barnes • Pierre C. Bouvard (C83)* • Stephanie M. Burns (C91) • Harry H. Coon (C44) • Kevin M. (WCAS92) and Phyllis Alia (C90) Crotty • Marilyn B. Darnall • Richard H. (EB69) and Jane Stowers (C69) Dean • Michael L. (C67) and Mary Colbert Denger* • Leonard A. Gail and Robin M. Steans • Keith and Jerilyn Gertzman • Salma A. Hammad (L00) • Michael M. Heflin (C89) • Charlton Heston Family Trust/Lydia Clarke Heston (C45) • Raymond James Charitable Endowed Fund/Roger G. and Molly Wells (McC63) Williams • Martha Lavey (C79, G86, GC94) • Richard A. Ludwin (GC71) • Bill Melamed (C79) • Susan Cole Mitchell (C86, GJ88) • Steven T. (SESP85) and Eden Salenger (C90) Romick • Isabel Rose Foundation/Isabel Rose • Leslie and Gloria Schaffer • Robert A. and Kristine A. H. Schriesheim • Arlene A. Siavelis (C79, KSM82) • Estate of Donald J. Strueber (WCAS47)† • Kelly Schumann Styne (C84) • Sug Jong Suh and Chae Hong Moon • Kipp (WCAS88) and Anne Miller (C87) Sylvester • Richard N. Tufeld (C48) • Vanguard Charitable Endowment Program • Brenton N. Ver Ploeg (C69)* • Ira and Marcia Wagner • H. Ronald Welsh (C72) • Jacob Wu • David H. (C68, GC69, GC74) and Nikki Martin (C71) Zarefsky*



Members (\$1,000–2,499) • Richard C. Adamek (C54) • Kenneth and Marleen Alhadeff • Cary Jr. (WCAS65, FSM68) and Joan Manning (C76) Andras • Ronald J. Aronberg Trust/Ronald and Linda Aronberg • Bethany Asplundh (C88) • Ayco Charitable Foundation/Francesca Spinelli (C74) • Nancy McClaughry Battel (C69) • Bella Vita Entertainment/Nicholas Stabile (L10) • Jeffrey R. and Kelly Ann Brincat • Emily P. Bristol (C83) • Clark E. and Susan Tallman (C61) Brooks • Bross Family Foundation/Lisette J. Bross (C93) • Stuart N. Brotman (C74) and Gloria Greenfield* • Timothy R. M. (WCAS86, L89) and Jacqueline Shim (C85) Bryant • John and Laurie Buell • Suzette Bross Bulley (C90) • Mahlon (WCAS54, FSM57) and Marilyn Williamson (EB54) Burbank • Richard J. and Gayle Handmaker (C68) Burstein • William C. (EB48) and Violet Gustafson (WCAS50) Butler • California Community Foundation/Hope C. Wintner (C86, KSM91) • Doris Hersh Chortek (C46) • Joel A. Christie (WCAS89) and Angela K. Conway (WCAS89) • Paula Johnson Clancy (C59)* • Frank L. Clinton (C59) • Paul D. (WCAS74) and Jacqueline M. Clote • Brownell Clikeman Cochran (C66) • Rives and Kirsty Collins • Karen Rivard Cronin (C68)† • Stephen E. C. (C84) and Jill M. Davis • Bernard J. (G81) and Sally Seibert Dobroski • Christopher B. (C78) and Karen Dudley • Eunice L. Dwan Irrevocable Trust/Victor Robert (WCAS83, KSM85) and Nancy Rodkin (KSM85) Rotering • Sally Thurnau Egler (C59, GC65) • 86th Ohio LLC • Peter B. and Mary Kirby (C66) Elder* • Fairfield County Community Foundation/Laura L. Light (C91) • Steven G. and Billie Blakely (C69) Fischer • Galbut Family Trust/Martin R. (C68, L71) and Cynthia Slaughter Galbut • Anne Kwas Gentuso (C74) • Francis J. and Suzanne Long (C55) Gerlits • David H. (C70) and Susan Epstein (SESP71) Gersh • Harriet Schwartz Goldberg (C54) • Paul Goldberg (EB53)† • Allan E. Goodman (C66) • Rick and Dawn Plambeck (C79) Gray • Thomas L. (C60) and Helene Griffin • Arthur J. Hill • Michael G. Hitchcock (C80) • Philip K. and Alexandra C. Howard • Christopher Iannuccilli and Michele M. Schiele (GC95) • Laura E. Innes (C79) • Robert and Hilary Jacobs • Jewish Foundation of Memphis/Bruce (C83) and Susanne Frankel (KSM90) Landau • Matthew and Karen Stone (L82) Kaplan • Wade and Heather King • Donald G. Kirkorian (GC72) • Richard D. Kirshberg (C61)* • Rikki J. Klieman (C70) • Ronald R. (EB61) and Ursulla G. Knakmuhs • Michael Knobloch (C92) • Allen E. Koenig (GC64) • Judy L. Koenig Living Trust • Stephen J. (C85) and Vanessa Young (SESP85) Lambright • Pamela Muth Langan (C85) • Martha Macomber Leader (C82) • Thomas Leahy (C68) • Jill Leiderman Living Trust/Jill L. Leiderman (C93) • Scott and Jacqueline Littman • Gregg P. (FSM97) and Deborah Yerman (C91) Lobel • Barbara Mallorie Mac Isaac (C77) • Abigail MacKenzie • Edward Stuart (WCAS75) and Holly Kuehner (C72) Mann • Joe Mansueto and Rika Yoshida • R. Bailey (C53, GC56) and Marion Bork (C53) Markham • Ronald L. Marmer (C74, GC74) • Chris and Beth Bening (C78) Martin • Ann Timson Mateer (C37) • John P. (C81, KSM83) and Elizabeth Sehn (C83) McEnaney • Mark E. (L97) and Kelly Hyer (C94) McKane • Mark and Laurie Murphy • Joseph Naylor and Karen Torres • Wayne Neiman and Anne Roberts • Norman P. (G57) and Georgine Reid (C54) Neureiter • Daniel J. and Barbara Jackson O’Keefe • Edward C. Jr. (WCAS63, L66) and Susan Snider (C66) Osterberg • Michael and Shira Pacult • Philip Pavel (C91) • Marietta Morgan Paynter • Marla S. Persky (C78) • Carey Linkon Pickus (C84) • Roger Fuller (KSM89) and Elizabeth Bisch (C89, GC90) Platt • John Oliver Priest (C76) • Mary-Carol Kooi Riehs (C82, GC91) • Dale S. Rieling (C83, GBSM84) and Victoria Miller Bussert (GC82, GC84) • John C. Roberts (C61) • Ronald A. and Gloria Van Black (C89) Rolighed • David Rosenthal and Leslie Milton • Richard S. Rosenzweig (C57) • Carole Rothman (C70) • Michael A. and Carol R. Reich (C79) Scheffler • Donald Schneidman and Wendy Stevens • Schuler Family Foundation/Jack W. Schuler • John and Toni Schulman • Seattle Foundation/ Eric F. Fisher (C86) • Lloyd and Allison Lyon (C84) Segan • Jay A. (C95) and Tanya Sharman • Allen B. Shaw Jr. (C66) • Mandell and Elaine Fantle (C58) Shimberg • Joel S. and Evelyn Marks (SESP59) Siegel • Richard D. (C60) and Theodora Proper (WCAS59) Siragusa • Norman J. (C69) and Kathy Smith • William S. (C63) and Cathy Kirchner Smith • Speer Revocable Trust/J. Howard Jr. (McC53) and Catherine Kerins (C52, GC53) Speer • Christopher and Antoinette Spohn • John and Monique Staples • Steven M. Stark (C82) and Michelle Nicastro-Stark (C82)† • Peter M. and Lisa Palumbo (C81) Steiner • Kimberly Louis Stewart Foundation/Kimberly Louis Stewart (C79) • Ann Allen Stillman (C53) • Eugene (WCAS71) and Hollis Leach (WCAS71) Sunshine • Ralph and Kathy Tedeschi • Samuel R. and Ellie Rossenfeld (C78, GC81) Telzer • Michael A. Thomas (C80) • Carl A. and Susan Maxwell (C67) Thomsen • Lee Thornton (GC73) • Thunder Beach Films/Richard J. Lewis (C83) • Tobey Foundation/William Hayward Tobey (C81) • Richard B. Turner (J62) • Terre A. Tuzzolino Trust/ Terre Tuzzolino (GC72) • Nenon Merrell Ujiki (C66, GC68, GC90) • William and Frances Vaculin • Jeffrey S. (WCAS71, FSM75, KSM98) and Barbara Floyd (C71, GC72) Vender • Lee and Judith Wasserman • Elizabeth P. Weaver (C92) • Mark F. (C99) and Alison Hartshorn (C00) Weems • Don Weiner Productions/Donald J. Weiner (C79) • Donald B. Williams (C55) • Heather E. Winch (C82, KSM89) • Susan M. Wolford (C68) • Shelby (WCAS57, L59) and Sybil Wohlfeld (C57) Yastrow • Dennis C. Zacek (GC65, GC70) and Marcelle S. McVay (WCAS70) • Zeta Phi Eta Chicago • Daniel N. (L84) and Alisa Birnbaum (C80, GC81) Zucker



ANNUAL FUND • *The following individuals and organizations made donations of \$100 to \$999 between September 1, 2010, and August 31, 2011. We apologize for any errors or omissions.*

\$250–999 • Abrams Artists Agency • Larry E. Adams (GC76) • Alexis J. Alexanian (C85) • Janice Kelley Allen (C64) • Altman, Greenfield & Selvaggi/Richard B. (C78) and Dana Kind Stanley • David R. (McC81) and Allyse B. Anderson • Giovanna C. Annunziato (C08) • Kraig and Susan Krendl (C96) Armstrong • Auer Irrevocable Trust/Marilyn Mills Auer (C60) • George and Diane Bajalia • Ruth and Louis Baker Family Foundation/Karen L. Baker (C83) • Richard M. and Terry Kay (C77) Bargar • Anne Brunk Barrow (C77) • Patricia Preble Barry (C52) • Joseph A. Bartush (GC74) • Patrick F. Bassett Jr. (GC73) • Michael James Baum (WCAS89, KSM94) • John R. Baumhardt (C61, GC65) • Nancy Graybill Becker (GC68, GC73) • Stephen A. Becker (WCAS72) • Catherine Stevenson Beemer (C67) • Philip W. (C57, GC59) and Susanne Hoch (C58) Beilfuss • Timothy M. Beittel • Shelly Bergstrom • Robert J. (WCAS73) and Katherine Bacon (J75) Best • Michael A. Blaustein (WCAS87) • Eric E. (C81) and Karen J. Boyd • Clinton A. Bramkamp (C71, GC72) • Broadus Foundation/Anne F. Broadus (C92) • Sarah M. Broshar (C02) • Bruce J. Burmester (C62) • Steven C. (KSM97) and Nicole Shetterly (C97) Busby • William J. Bute (C78) • Douglas and Alexandra Cowen (C84, GC85) Byrd • Tom Byrd • Joseph F. (G72, KSM72, KSM74) and Mary Maziak (GC71) Byrnes • Keith R. Calabrese (WCAS92) and Kirsten M. Nelson (C92) • Connie Carter (C79) • Jane T. Caseley • Kelly Anneman Cattalini (C97) • Carol C. Ceithaml (C58, GC59, G77) • Nancy Chamberlain • Ann Hoopes Champion (GC74, GC92) • Wendy Gabriel Chase (GC88) • Erwin Chemerinsky (C75) • Alan Ciamporcero and Carolyn Sachs • Christopher Claeys (C77)* • Barbara Baylor Clayton (C79) • Carol Susan Cling (J76) • Marilyn Anthony Coffman (C63) • James B. (EB49) and Anne Curtiss (C49) Collett • Thomas G. Connolly (C84) • Diane Copeland (C64, GC65) • Scott D. (WCAS79, FSM83, FSM88) and Leslie Pankau (FSM82, FSM84, FSM87) Cordes • James H. Cornell (C82) • Michael E. Cotter (C98) and Janae D. Bakken (C96) • David J. Coynik (GC68) • Earl and Karen Cunningham • Parthavi Das (C91) • James Albert Davidson (C80) • C. Sue Davis (GC67) • Laura Clampitt Douglas (C68) • Ann Crawford Dreher (GC68) • Douglas A. Dunderdale (C77) • Warren E. (C58) and Joan M. Eagle • M&J Edelman & Associates/Mitchell and Mrs. Mitchell Edelman • Keith R. Everett (WCAS92) • Darren W. Fancher (C93) • H. Clark Federer (C80) • Michael S. (WCAS64) and Ruth Snejd (C66) Fedotin • Michael C. and Lisa Gelb (C79) Feiner • Lynn Prange Ferguson (SESP59) • Michael A. and Suzette Adouth (C85) Fisher • Robert and Tracy Fisher • Ira S. Friedrich (C79) • Jennifer Kasle Furmaniak (C95) • Thomas C. Galantich (C83) • Mary Jo Florio Garrison (GC63) • Michael J. Gelfand (C79) • Alan I. and Lillian Polus (C73) Gerstner • Jonathan S. Glassner (C83) • Kevin E. Gore (C88) • W & P Gorelick Family Foundation/Israel K. (C94) and Gabi Gorelick • Laura Gossage • Vani R. Gowda (C93) • Greater Kansas City Community Foundation/Polly Taylor Revare (C88) • Cynthia Dalbey Greenburg (C66) • Carolyn Booth Gregory (GC52, GSESP86) • J. Terry Griffith (C72) • Alan D. and Pamela F. Grossbard • Susan Gustafson (C65) • Russell H. and Marilyn Hackett • John L. Hamburg • Sanford Z. K. (C56) and Marilyn Prage (J55) Hampton • Joel L. Handelman and Sarah R. Wolff (C74, L78) • Ruth Robinson Hanna (GC42) • Lawrence G. Havens (C65, GC66) • Peter A. Hawley (C86) • Atha Jane Haywood (C48) • Keith E. Hefner (C50) • Stephen M. and Ruth Goldberg (GC75) Hendel • Karla J. Herbold (J62, GC94) • Gilbert R. Herer (GC64) • Thomas N. Heymann (C80) • Pauline Gorman Higlie (C49) • Stephen C. Hillyer • Armin & Esther Hirsch Foundation/Andrew A. Hirsch (C87) • Ronald G. and Lauren Lowenberg (C87) Hochman • Michael Selig and Dana Hochberg (C89) Hokin • Norma McCabe Hoppenfeld (C61) • Stanley Hoppenfeld 2009 Trust/Norma Hoppenfeld • Mary Hudson (C70) • Sarah Marie Hyde (GC90) • Linda Imes (C78, GC78, L82) • Sara Abrahamson Iorio (C93) • Daniel L. Isaman (McC81) and Ann J. Atkinson (C81) • Andre R. Jaglom and Janet R. Stampfl (C73) • James L. Jensen (C71) • Elaine Johnson • Cherry Jones • Judith L. Judson (C74) • Judith Bement Kaiser (C59) • Paula J. Kaplan (C83) • Jodi Lynn Karjala (GC94) • Russ Kendig (C80) • Sean Kennedy • Bradley C. (McC94) and Laura Plaza (C96) Kiefaber • Kris D. (C72) and Diane Foster (WCAS69) Knudsen • John E. Kolb (BSM85, GBSM86, BSM88) • Janet Skunda Krueger (C72) • David Kucinkas (McC74) and Paula M. Cadogan (C73) • Joseph B. Laine (GC58) • Charlene H. Landis (GC68) • Charles Larrabee (C76) • Debra Lederman • Mark A. Ledogar (C89) • Ruth C. Levin (C80) • Sheldon N. (WCAS56, G56) and Suzanne Goldberg (C56) Lewis • Mark S. Lillie (McC81) • M. Stanley Lindberg Jr. (McC63) • Paulee Lipsman (C69) • Chris Lloyd • Herbert and Joan Leshin (C52) Loeb • Alan S. Loewinsohn (C76) • John S. Logan (C89) • Richard Loutzenheiser • Evelyn Wetzler Lucking (C66) • Timothy M. and Pamela Shimrak (C81) Lynch • Keith A. Mack (WCAS95) and Heather E. Leahy-Mack (C94) • Martyn L. Mantynband (SCS85) • Richard and Sara O'Daffer (C81) Marberry • Lowell B. Jr. and Elizabeth Upjohn (J50) Mason • Richard A. (EB68) and Jean A. Frizelle (C67) McAdoo • Daniel and Bonnie Remondelli (C61) McAlister • Johanna D. McAuliffe (C76) • Daniel J. and Nancy McFarland •

Jacqueline McGrory • James G. Mennen (C66) • Jeffrey M. (WCAS99) and Alison Center (C99) Merzel • Morris & Helen Messing Foundation/Susan A. Messing (C86) • Gregg H. Mettler (C94) and Tara Ann Silva (C94, GC95) • Timothy F. and Sharon Siegel (C68) Moore • Michael J. (KSM98) and Karen Brumbaugh (C81) Mozenter • Elizabeth Dayton Mulligan (C01) • James P. Naughton (C73) • Christopher J. and Leslie Cochran (C81, GJ82) Neugent • Joseph C. Nunes (J87) and Wendy Heiman (C87) • Kevin Thomas O'Connell (C76, GC77) • Tracey L. O'Connor (C92) • Denis P. O'Hare (C84) • Charles D. O'Kieffe (KSM58) • Cornelia M. O'Kieffe† • Scott R. (WCAS80, GC81, GC85) and Kelley Hughes (C84) Olson • Douglas A. Palmer (C93) • Cynthia Parker (C65) • Joan Sorge Parker (C54) • Kevin and Paige Payne • Jane Monro Peddicord (C60) • Kathleen Sullivan Pistono (GC68, GC80) • William H. Plotkin (GC51, GC57) • Pamela Kammer Powell (GC88) • Robert A. Ravitz (C60) • William M. and Stacy Ray • Jan Aimee Potter Reed (C76) • William M. (C01) and Elizabeth A. (J00) Reichel • Raymond W. Rensis (C49) • Mrs. Merle Reskin • Thomas and Dana Riccard • Patricia M. Rice (GC66) • Mark W. Riepe • Sandra Lynn Riggs (C65) • Gregg and Karen Ritchie • Leland H. Roloff (GC51) • Robin L. Rosenberg (C87) • Jack E. Rossotti (WCAS66) • Stephen B. (C75) and Alice Crancer (WCAS79) Rudolph • Peter W. Rudoy (C74) • Melissa Pate Sanders (C86) • Terry D. Sanders (GC99) • Keith P. and Sharon Twersky (C84) Savel • Charles M. Sayre (D46) • David G. (C82, KSM85) and Carolyn Banich (WCAS82, KSM86) Schanzer • Albert S. (C63, G65) and Sandra Spatz (GJ63) Schlachtmeyer • Robert A. Schultz (C51) • Barbara J. Scrivner (C70) • Jonathan A. Shapiro (C87) • Sharing of Blessings Foundation/Stacy Trannel Devine (WCAS05) • Rita Pearlman Sheinin (C59) • Amy Falk Sheldon (C92) • Craig F. (C88) and Stephanie D'Abruzzo (C93) Shemin • Mark D. and Carole Spolar (C78) Shepard • Christopher (C95) and Elizabeth A. Bisbee (WCAS97) Silber • Charlann Scheid Simon (C61) • Mark D. and Donna Doles (GC95) Simon • Nedda Jefferson Simon (C54) • Thomas L. Simpson (C68) • Dori Solomon (C82) • Sound Republic • Steven J. and Emily Yerman (C88) Steinman • Hal S. R. Stewart (C68, GJ70) • Roger & Susan Stone Family Foundation/Roger W. and Susan Kesert Stone • Leslie Westerman Struggles (C71) • Sullivan Family Fund/Sandra Hannah Sullivan (C58) • Simon and Pauline Michaud (C86) Thaler • Elizabeth Randolph Tompkins (C59) • S. Jenell Trigg (C78) • Gregory S. (C77) and Kimberly Peiffer (C82) Uchimura • Leon P. (EB55, KSM56, KSM59) and Carolyn Herbst (C55) Ullensvang • Paul R. (C74) and Karen Jacob (C74) Vershbow • William E. Vickers (GC52) • Bryan G. Wachter (C93) • Sally Dewitt Walker (C59) • Lou (C91) and Allison Teicher (C90) Wallach • Anne C. Walzel (WCAS99) • G. Lane Ware (C61) • Gretchen A. Wayne • Mark R. and Lori Robb (C83) Weaver • Rachel McDonough Weinberg (GC61) • David A. Weintraub (C02) • Michael A. Whetstone (C87) • Paul Wiefels • Robert B. Wight Jr. (C57) • Charles A. Wilkinson (GC65, GC75) and Kathleen Galvia Galvin (GC65, GC68, GSESP80) • Ty Williams (C95) • Lorelei E. Wilson (C89) • Sarah L. Wohlenhaus (C80) • Nicholas O. (WCAS82, SESP82, KSM89) and Joyce Larcom (C82, KSM92) Wright • Nili Yelin Wronski (C80) • Gary Lee Wuslich (GC08) • Richard S. Zeilenga (C84, L87) • Dean and Esther Zisper

\$100–249 • Don P. Abbott (GC70) • Jonathan and Peggy Abram • Thomas E. and Anita Bellmann (GC62) Adams • Robin S. Agranoff (C94) • Anne Butterfield Ainsworth (C67) • Cynthia A. Alcantara (C96) • Robert Douglas Alexander (GC98) • Richard E. (C61) and Lynne Allen • Danielle Renee Almany (C82) • Faith Kolkey Alster (GC74) • Harry J. Althaus (C84) • Scott Althoff • David B. and Janet Grinker (GC71) Altman • Ellen Mielke Anderson (C51) • Meredith Bergman Apicella (C89) • Susan D. Apkon (C86, GC87) • Dorothy M. Aram Living Trust/John D. and Dorothy Worzella (C64, GC65) Aram • Mary M. Arndtsen (C88) • Richard L. Arnold (GC62) • Hope Rissman Arthur (C53) • Tom J. Astle (C82) and Saralee Melnick • Audiology Associates Hearing Care • Richard M. (L59) and Adrienne Lange (C59, GC60) Baach • Todd and Joanna Bachelder • James A. Backstrom (C73) • Edwin Baker and Christine Peck • Edwin D. Jr. (McC60, GMcC61) and Pamela Miller (C60) Ballard • Judith Goldstein Ballow (GC64) • Penelope Steele Banello (C69) • Francis E. and Gloria J. Banich • Matthew A. (C98) and Jennifer Barlow • Beth Dieterly Barnes (GC62) • Mary Young Barnes (C61) • Barnett Family Foundation Trust • Marsha Silverman Barnett (GC68) • William A. Barnett (C78) • Allen M. Barr (C75) and Elizabeth L. Wellman • Peter Barrett • Robert Piper Barrett (C01, GJ05) • Jay J. Bauer (C96, GC01, GC05) • Terry P. Bayer (C71) • BBCS/Mary D. Broderick (C78) • Raymond S. (GC54) and June H. Beard • Emilie P. Beck (C89) • Robert Kling Beck III (C75) • Lee Muller Beckermann (C57) • William and Linda Hill (C62) Bein • Dennis J. Belcastro (GC94) • Maury J. Bell (WCAS82) and Mary Katherine Keatley • Andrea Hinds Bempong (KSM77, GC05) • Laura Norwalk Bendelius (C91) • Marland L. and Ruth James (C54) Berdick • Leslie Wolffe Berkovits (C77) • Katalin Berland • William Bianchi • Laura Ann Bierck (GC07) • Anthony J. Billera (WCAS82) • Robert M. Birndorf (C75) • Elizabeth S. Bishop Revocable Trust/Elizabeth Simmons Bishop (C41) • Therese Grein Bivona (GC73) • Kurt Edwin Blaugher (GC85) • Richard M. (C73, GC75) and Jane Crow (C73) Block • Kenneth Bloom (WCAS82, KSM87) • Mark S. (C88, GC88) and Karen D. Bloom • Jeff Blumenkrantz (C86) • Sarah Ellsworth Bogan • Peter and Sandra Bohr • George Bollweg and Margaret C. Martini • Ana Arango Bossard • Mary Kay Bottorff (KSM93) • Drew Stewart Bowen (C09) •



M. J. Boyer (C58) • Antonia Barnes Boyle (C62) • Robert M. (C66) and Jill Harmon (WCAS66) Boyles • George R. Brant (C91) • Rona Carol Brecker Wiedmayer (GC87) • John Bredar (C83) • Katherine A. Breen (C70) • Jeffrey A. and Rachel Gunderman (C92) Breitbart • John M. Bremen (WCAS90, KSM00) and Lara S. Frohlich (C90, GC91) • David Franklin Brener (C77) • Terence Kelley Brennan (KSM78) and Gilmore Lavezzorio-Brennan (C76) • Joan Frankel Brenner (C48, GC49) • Virginia Noble Bridges (GC68) • Diane E. Brody • Thomas M. Brody (GMcC94, GMcC98) and Amy Museth Huseh-Brody (C94) • Eric M. Brose (C87) • Gail Krumrich Brown (C59) • Kathryn Yager Brown (SCS75) • Kenneth L. Brown (GC60, GC65) • Oveda L. Brown (C90) • Thomas L. (WCAS71) and Susan Depeugh (C71) Browne • Marcy Brownson (C66) • Christopher Scott Bruss (C05) • Melissa D. Bryan (C88) • Paul R. Burkhardt (C56) • Paul Foster Burtis (C84) and Jane C. Dell • Bette R. Butterworth (C53) • Karen Burket Byrne (C73, GC75) • Randall L. Bytwerk (GC73, GC75) • Zan and Linda Calhoun • Judith C. Campbell (C66) • Susan Hubka Canter (C66, GC67) • John C. Cardon (C74) • Edward P. and Karen Halvorsen (GC69) Carlson • Donald James Carnow (FSM86) and Heidi R. Olsen (C81, GC82, GC88) • Sarah Louisa Stelle Carty (C83) • Jason William Cassidy (C06) • Louis P. Castelli (GC74, GC77) • Wileen Chang (C91) • Margaret Jean Chapman (C52, GC61) • Gerald E. (GC62) and Christine A. Chappell • R. Dana Charles (C71) • Kathleen Rutkowski Chase (C81) • Debra Lynn Chatelle (GC76) • Leslie Corbett Chenoweth (C91) • David S. and Loren Radewagen (C68) Chernoff • Childs LLC/Laura Spielvogel McKirdy (GC63) • Ralph H. Chilton III (WCAS91) • May Elizabeth Chin (GC73) • Harold and Linda Chizewer • Mary T. Christel (C79) • Caroline Dawn Christy (C10) • Ted Clatfelter (C89) • William M. and Patricia Haffey (GC73) Clemency • Douglas J. Cohen (C97) and Amy Y. Liu (C97) • Charlotte Crozier Cole (C60) • Dalen Sciarra Cole (C69) • Thomas G. and Lynnette Jackson (GC70) Colmey • Barry F. Comiskey (C56) • Community Foundation of Greater Memphis/Stephen M. Friedman and Lisa Binswanger-Friedman (GC73) • Congregation Beth Abraham • Doyt Ladean Jr. (C89) and Kristin Phillips (C88) Conn • Melville A. Conner (C51) • Christine Fruechtenicht Cook (C68) • Richard B. Cook • Nancy Sherman Copic (J81) • Christopher R. (C73) and Rebecca Corbett • Jeffrey A. Cory (C86) • Jeffrey Cote • Michael J. (C02) and Adriana Ruhl (C03) Cox • Robert A. (WCAS63) and Joy A. Creamer • Alan K. (GJ78, GJ87) and Charlotte Strader Cubbage • Linda Raglan Cunningham (C68) • Dan Paul Curry (C76, GC79) • Kaila Minnick Curtis (C66) • Caryl Mathis Cusick (C68) • Andrew Dane • Peter L. Dangerfield (C93) • William C. Dannevik (C66) • Paula Ernst Dau (C58) • Steven and Donna Dauterman • James H. Davis Revocable Trust/James H. (EB65, KSM68) and Penelope Wheeler Davis (GC66) • John Davis • Christopher J. Day (WCAS84, KSM85) • Robert De La Torre (C83) • Jilana Dellal (C79, KSM98) • Lucy Jackson de Monchaux (C56) • Michael R. de Riesthal (C97) • Christopher Detmer (C68) and Eva Maxwell-Detmer • Charlon Kaye Dewberry (C76) • Florence Carre Dewitt (C45) • Maggie Rubin Diamond (C98) • Brandon M. (C04) and Chelsea Correia (SESP05) Dickerson • Greg Dinger • Barbara Director • Dollinger Law/Scot G. Dollinger (C84) • Arthur Don (C75, L78) • Paula Schomburg Donahoe (WCAS71) • Joseph E. (GMcC62, GMcC65) and Ruth Bohn (WCAS59) Doninger • Priva Dorfman • Amber E. Dow (C99) • Alexandra L. Dreier (C92) • Eldred H. (SCS67) and Joan Burgess (WCAS55) Dusold • Judith A. Dyke • Paul M. Dzuovcik (GC99) • Julian S. (McC63, G65) and Diane Frey (BSM62) Eberhardt • Gregg J. Edelman (C80) • Stephen D. (L69) and Sharon Anderson (C69) Edelman • Jill Dinkes Efron (C88) • Jerome E. Egel (C65) • Arnold R. and Diane Levy (C69) Eger • Carol M. Eggers (C87) • Valerie J. Eggers (C97) • Kathleen Crandall Eilers (GC74) • Janet Feinblatt Elby (C47) • El Dorado Apartments/Mary Zangrando Phillips (C55) • Donald R. Eldred (GSESP57) • Benjamin G. Elkin (C00) and Elizabeth M. Terzo (C01) • Roy Matthew (C75, GJ76) and Caryn Elvove • Rexford A. and Carol English • Amy M. Eppen (GC93) • Thomas D. Ervin Jr. (C82) • Gerard and Andrea R. Esposito • Mary M. Ettel (C73) • Le Roy E. and Marta Evans • William S. Evans (C68) • John C. Jr. (McC57, GMcC59) and Marcia Newman (C61) Even • Lauren Hargens Fakonas (C09) • Richard E. (SESP64) and Susan Garrett (C67) Falk • Gordon R. and Fran Marling (C61) Faller • E. Garnet Fay (C65) • Elliot A. (C82) and Lisa Crowley Feinstein • Virginia Roberts Feldman (C61) • Kay Felt (WCAS63) • James G. Fentin (C73) • Ray and Edith G. Fessler • John Fetcho • Margaret A. Fieweger (GC71, GC75) • Terese Finitzo (C69, GC75) • Dann Fink • Jeffrey A. (McC64, KSM73) and Joann Schmalenberger (SESP64, GC67) Finlay • Brian S. (McC03) and Courtney Price (C02) Firlit • Elizabeth M. Fleck • Roslyn Klein Flegel (C53) • Keith E. Flippin (C79) • Lucy Lee Flippin (C65) • Richard and Gayle Flynn • Priscilla Lord Ford (C61) • Robert Curry Ford (C60, GC62) • H. Wendell Foster III (C85) • Robert and Linda Foster • Paul J. (McC79, KSM85) and Mary Legere (BSM81, GBSM86, BSM88) Foszcz • Elizabeth M. Frankel • Barry A. Friedman (L66) • Sanford L. and Amy Cassman (C75) Friedman • D. Robert Frisina (GC55) • Jerald N. Fritz (C73) • Royal T. (SESP58, SESP59) and Aurora Avecilla (GC57) Fruehling • Eric J. (McC84, KSM89) and Liza Goldberg (C82) Fues • Cal Fuller (GC90) • Julia Funke (GC87) • Mary Moorman Gagen (C81) • Biagio Gagliano and Lorraine Baumgardner • Daniel A. (WCAS78, GMcC79) and Carol Spotleson (C78) Gallagher • Jody Larson Gardner (C66) • Susan Mabrey Gaud (G70, G74, KSM82) • Holly Peterson Gaunt (C65) • Timothy A. (WCAS85, FSM93) and Margarita Cabrera (C85, GJ86) Geleske •



Dorothy E. Gemberling (GC55) • Ben George • Joan Blumberg George (C79) • Richard A. (C62, H92) and Jane Byrnes (WCAS64) Gephardt • Joseph L. Germuska (WCAS93) • Anatole and Nancy S. Gershman • Richard L. Getrost (C60) • William J. Gibbons Revocable Inter Vivos Trust/William J. and Nancy G. Gibbons • Esther Rachel Gibofsky (C07) • Sallie Squarey Gilmore (C66) • Donald L. Goff (GC91) • Rachel Samuels Goldberg (C96) • Bruce Golden (C55) • Chad and Debra Lipschultz (C94) Goldenberg • Benjamin Goldfarb • Joyce Good • Lawrence P. Goodman (C54, GC55) • Cecilia Woolley Goodwin (C48) • Richard A. Goodwin (C77) • Dale Gordon (C70) • Sherwin and Vivien Gordon • Renee Ogle Gottliebson (GC94) • Ellen Michaux Gower (C61) • Doris A. Graber • Paul C. (GMcC80, GMcC82) and Suzan Kobey (GC80) Grabow • Howard (C50) and Paulette Grafman • Kalmaine Deakter Graham (C51) • Susan Gransee • Timothy Holman (G79, G85) and Beverly Kahn (C81, GC83) Gray • Amy Lippa Graziano (GC05) • Melanie Alyssa Greben (C09) • Arthur Green Jr. • Ken Green • Kevin Bernard Greene (McC09) • Jeremy and Diana Green-Morrison • Barry H. Gribbon (C86) • C. Jeanne Griest (C40) • Steven B. Grossblatt (C99) and Elise Beth Kamen (GC00) • Roxanne R. Gryder (C88) • Steven L. Gryll • Richard Guetzloff (GC04) • Janet Gulden • Howard E. (GMcC72, GMcC77) and Deborah Mass (GC76) Guthermann • Benjamin C. Haber (C97) and Laurie E. Barnes (C97) • Molly J. Hagan (C83) • Donna Erickson Hagen (C48) • Murray M. (GC49, GC52) and Jeanne M. Halfond • Elizabeth Merle Hanley (C82, GC85) • Fredric Hanson (C81) • Janet Lundstrom Hanson (C83) • Jarice Hanson (GC77, GC79) • Richard Hanus (C85) • Mary Jane Harmon (C69, GC72) • Lisa Harbaugh Harrington (C75) • Lauran R. Hartley (C85) • Virginia Sue Hartman (C81) • Frederick B. Hartzell (C91) • William R. Haushalter (C59) • Christopher R. Havlik (C79) • Dorothy Morgan Hayes (GC49) • Nancy Motsenbocker Hefley (GC59) • Jeffrey Martin Heksh (C75) • Karen S. Helfer (GC88) • Bruce Henderson (C78, GC79, GC83) • Eileen Lager Hendrickson (GC64) • Dean Henley (C08) • Marilyn Miller Henry (GC67) • James F. Herber • Grant and Karlyn Metz (C96) Herlitz • Richard M. Herman (GC73) • Roger C. Hill (C48, GC50) • James R. Hinkley (C55) • Michele K. Hogan (GC07) • Elizabeth M. Holding (C73, GC80) • Edwin A. Hollatz (GC55, GC65) • Nancy Gade Hollomon (GC58) • Catherine Chun Holt (GC78) • Karen Karu Horn (C81) • Margaret Glauber Horn (C00) • Maury R. Horn (C71) • Eric C. Horner (WCAS97) • Chris Hornig and Nancy Garruba • Robert M. (GC76) and Vivien S. Houghton • Philip G. (WCAS50) and Ann Flowers (C51) Howlett • Cheri A. Hoy (GC82) • Deborah Garlock Hoyt (C65) • Deirdre A. Hughes (C99) • Robin M. Hulshizer (C86) • Alfred R. (KSM73) and Linda Nelson Hunsicker • Dennis R. Hunt (C61, L71) • George G. Hunter III (GC72) • Karen Shifrin Hurewitz (C77, GC79) • Todd E. Hyman (C95) and Susan J. Persky (WCAS00) • Nancy Arnold Ikard (C66) • Carmen Boltz Ilseman (C62) • Mariye Inouye • Kimberly L. Irwin (C96) • Andrew (WCAS74) and Beth Lefkowitz (C76) Isaacs • Carolyn Weiner Isakson (GC66) • Scott (WCAS98) and Carin Sulman (C99) Jacobson • Thomas James • James D. Jameson (C78) • Sheila Peterson Jaskierski (GC77) • Linda Walsh Jenkins • Coleman A. and Lola Hanawalt (C59) Jennings • Douglas Clark (EB59, KSM60) and Margaret A. Bevans (C62, GC85) Jerger • Constance Washington Johnson (GC94) • Janet Howard Johnson (C57) • Richard W. Johnson (McC89) and Mary E. Kalish-Johnson (C89) • Sharon Ruppert Johnston (GC65) • George B. and Laura Hellrung (C71) Jones • Isaac S. Josephson (C95) • John Ronald Jun (GC74) • Marianne Shaw Jurkowitz (WCAS61) • Annette M. Kaleita (GC62) • Lisa Goldstein Kaminir (C82) • Kevin F. Kann • Daniel L. Karl (WCAS03) and Haley Michele Gordon (C03) • Arthur Karp (C69) • Matthew A. Karp (C03) • Michael C. and Fran Karp • Kimberly A. Kelley (C84) • Martin and May Kelsten • Lisa Gene Kent (GC99) • Wendy J. Kheel (C73) • Young Yun Kim (GC76) • Kevin M. King (C80) • Jon Kingsdale and Rosalie Phillips • William C. (McC92, KSM99) and Jennifer D'Angelo (C91) Kircher • William G. (C73, GC74, GC78) and Lee E. Kirkwood • Douglas J. Klein (D81) • Donna Washington Klibanow (C90) • Barry M. Klor (C71, GC72, GC77) • Brad and Elisabeth Hession (C00) Klos • Steve M. (CB62) and Theresia Branstatter Klos • Albert P. Klose (GC70) • Steven M. Koenigsberg (WCAS92) • David Kovacs and Patricia A. Rust-Kovacs (C75) • John Adam Kowalski (C83) • Lauri Hamilton Kraft (C90) • Mark M. Krantz (C74) • Kraus Family Foundation/Merry Beth Kraus-Kowalczyk (C78) • Dorothy "Dee" Richardson Kreft (BSM50) • Douglas and Valerie Kroiss • Cacinda Harris Kuhn (GC92) • John and Karen Lundeen (WCAS83) Kurgan • Ines A. Laimins (WCAS82) • C. Wesley Lambert (C50) • James C. Lampl (C69) • Lawrence R. Landman (G83) • April Lane (WCAS02) • Janice Rohrllich Lang (GC77) • Carolyn Kimble Lanker (GC55) • Andrew Lapayowker (WCAS75) and Sarah McCafferty • Jan W. Lavacek and Carole Ryan Sullivan (C66, GC71) • Elizabeth Schmaltz Lavin (GC95) • Russell W. Lawyer (GC76) • Thomas P. Lee (C76) • Mary Springhorn Leidheiser (GC54) • Robert E. Leighton (J82) • Andrew J. (G92, G96) and Kari Merritt (C92, GC93) Leon • Allan B. (WCAS60) and Sandra Matthews (C62, GC66) Levin • David P. and Alison V. Levine • Marcia Wittow Levine (C57) • Jonathan P. Levitt (C86) • Evan T. (C95, KSM01) and Temi Epstein (C96, GSESP01) Levy • John P. Lewis (C59)* • Luyan Li (GC04) • Annette Bamberger Lieber (C73) • Michael S. Liebman (C00) • Mary Savard Lilly (C96, GC97) • Jane Arnold Lincove (C95) • Susan Shandelmier Lindsey (C75, GC77) • Julian and Margaret Wessling (C89) Lineham • Morris J. and Lois Wertheimer (C45) Lipnik



• Seymour and Toby Lipton • Lauren Litchfield • Andrea H. Loew (C79) • William H. Lord (GC61) • Mitchell W. Loveman (C84) • Christopher P. Lu • Dong Lu (GC09) • Lorna Luebbers (C92) • Rosalyn Lee Lueck-Mammen (C75) • Annamarie Lukes (GC03) • E. Kirsten Kirsten Lundergan-Linker (GC75) • Rhonda J. Luniak (C87, GJ92) • Lois Bendes Lurie (GC69) • Michael L. Lutton (C64) • Joan I. Lynch (GC55) • Eugenia Macer-Story (C65) • Diane Stoakes Mackey (C58) • Donna K. Magwood (C75) • James D. Mahady (C76) • Linda Maize • Naveen Malik (C05) • Constance Brooks Malm (C47) • Cheryl Zeken Malone (GC83) • Gerrard S. (WCAS92) and Denise Mamaril • Stacy E. Marble (C01) • Audrey D. Shepps Mark (C85) • Sandra Foreman Markin (C56) • Karl L. (C85) and Ilene Balsam (WCAS85) Marquardt • Rebecca L. Marsh (C87) • Marshall Family/John A. Marshall (C54) • Robert R. (GMcC69) and Rhonda Held (GC69) Martens • James D. (GC03) and Carrilyn Leto (C04) Martin • Amy Schaefer Martinez (GC80) • Deborah Caldwell Martyn (C73) • Nedra Linville Martz (C52, GC54) • David and Carolyn Maschke • Nicholas J. Masi Jr. (C68) • Renny A. Maslow (C96) • Roger M. Masson (McC92) • Jeanette Waltman Matchette (C57) • Noel D. Matkin (GC59, GC65) • Terry Mattalino • Frances M. Matthews (GC81, GC85) • Timothy B. and Therese Matthews • Linda Rousseau Matuszak (GC75) • Christina Poulakidas Maydanis (C56) • Alayne Pelletz Mayer (C87) • John A. and Marilyn Wiegand (C76) McAuliffe • Janet Evans McBride (GC70) • Donna Wallach McCabe (C75, GC76) • Stephen and Patricia Higginbotham (G70, G76) McCann • Michael R. McClory (C64) • William A. McConnell (C81) • Patrick J. (C85) and Elizabeth Snow McDougall • Mary Hamilton McEnergy (C60) • John Paul II (FSM68, FSM70) and Sharon Stanton (WCAS66) McGee • Bill McGough • George J. McLaughlin (C49, L52) • Ellen Singer McRae (C71) • Michael G. and Cynthia Ryskamp (C78) Mehallow • Rolland R. Meinholtz (C59) • Adrienne Meisel (GC71) • Mary Malsam Mellen (GC90) • Velia Russo Melrose (C66) • Marta R. Merchant (C80) • Valerie Meredith • Robert B. Mesrop Jr. (C83) • Donald E. Metz (C50) • Scott A. Meyerson (C91) • Yvonne Braswell Meyerson (C81) • John and Marianne Michnowski • Arlene Rothman Millar (C87) • Aspasia M. Apostolakis Miller (GC94) • Carolyn Fox Miller (GC59) • Christine M. Miller (GC78, GC82) • Dale E. (GC71) and Vergene Carlson (GBSM72) Miller • Marilee L. Miller (J01, GJ02) • Judith C. Miniace (GC72) • Arthur and Martha Golov (C87) Mintzer • David J. Mitidiero (C91) and Heidi C. Memmel (WCAS90, FSM99, FSM06) • Marion Jackson Mito (GC77) • Jean M. Moe-Cathro (GC57) • Melanie Breen Moelis (C85) • Rebecca Herman Molesworth (C93) • Anthony T. and Deborah Molinaro • Richard R. Mone (C88) • William C. Moody (C59, GC60) • Kathleen A. Moore (C68) • Susan Eggleton Moran (C76) • Jose Moreno • Frank C. Morris Jr. (C70) • Lydia Griffith Morrissey (WCAS82) • Hugh W. Morton IV (C54) • Kirk A. (McC74, KSM76) and Lydia Fiesselmann (C75) Moul • Jennifer Dunn Moyers (C83) • John Michael (GC74) and Josephine Muchmore • Susan Taber Mulhern (GC67) • Thomas C. (KSM72) and Judy McKeown (C65) Muntz • Timothy J. Murphy (C76) • Allison Slaughter Murray (GC86) • Beth Anne Musiker (C82) • Margot A. Myers (C75) • Gayle P. Nadler (C86) • Jon A. Nakagawa (WCAS81) • Ann Parks Napp (C80, GC81) • Raymond D. Narducy (GC74, GC81) and Elizabeth J. Soete (BSM72) • Edith Conte Natalini (C53) • Elaine Teborek Nelson (SESP62) • Georgia Bayless Nelson (C42) • Russel Parrish Nelson (WCAS08) and Sarah Brynn Lyerly (WCAS05) • Martin L. J. Newman (C82) • Cuong Nguyen and Bay Le • Perry M. (G71, G73) and Betsy Becker (C71) Nicassio • Onni Nickle • Mark J. Nielsen (C80) • Richard D. (C70) and Barbara F. Nirenberg • Paul Yasuo Nishimoto (C76) • Paul D. Noffsinger (GC65, GC68) • Peter Martin (GC94) and Suzanne Nofz • Noonmark Foundation/Nancy Emrich • Angela Normoyle (GC97, GC03) • Northwestern University Entertainment Alliance • Forrest A. Novy (GC81) • Robert J. Nowak (GMcC71) • Louis (EB51) and Deborah Nusinson • Margaret A. O'Connor (GC07) • Jeffrey and Laura Olanoff • Wayne O. Olsen (GC62, GC65) • Lindsay Morison Olson (GC89) • Arlene C. O'Reilly (C76) • Daniel S. Osborn (C87) • Marcus L. Overton (C65) • Heidi E. Palarz (C85) • William B. Palm • Maulik N. Pancholy (C95) • Nick J. Pappas (GC67) • Lois Cross Parham (C53) • Howard and Lisa Parris • Wendy Langlas Parris (C88) • Matthew Shea (C87) and Suzanne Waterous (C89) Pasha • Gordon M. (C70) and Joy Bacon (G70) Patterson • John H. Pearsall (C88) • Christopher A. and Yvet D. Pecoraro • Pedersen McGrath Associates • Lloyd A. Pedersen (C68) • N. Eric and Caryl H. Pedersen • Jeff and Kathryn R. Purdy (C98) Pegorsch • Robert Pekurny • Michele Drabant Perkins (C78) • Marguerite Wertheimer Perkins-Mautner (C48) • Dennis G. (G77) and Anna Verchinsky Perkinson • Sarah Haynes Pesetsky (C60) • James H. and Carolyn S. Peters • Scott W. and Donna Machcinski (GC70) Petersen • Carolyn A. Piatek (GC79) • Charles Pierron (KSM92) • PINP Inc. • Malcolm J. and Janice Kopec (C71) Pitts • Otto J. (FSM85, FSM87, FSM93) and Lora Pollak (C88) Placik • David Owen Plaut (C75) • Charles E. Plunkett • Nancy Stephenson Plunkett (C60)† • Peter R. Pobat (GC72) • Philip S. (EB50) and Frances Thomas (GC57) Podulka • Ross Pologe and Karen Rosen • Elizabeth Anne Powell (GC96) • Ann Rutledge Powers (GC67) • Matthew D. Powers (C79) • Joyce Iwohn Prince (C52) • Sarah Price Pruden (WCAS63) • Gregory T. Pupillo (C87) • Joel Raab (C78) and Gayle Merlin Share-Raab (C82) • Anthony J. Radich and Sonja K. Foss (GC76) • Arlynn Raez • Jane E. Raveret (J83) • Gladys Ekeberg Reed (GC43)† • Elizabeth Gordon Reego (J83) • Charles R. Reeves (C54) • Timothy C. Regan (C83) • Erica Preiss Regunberg (C79) •

|||

Philip L. (C69) and Sherrill Hale (WCAS72) Reiff • Mary Kane Reilly (GC90) • Otto Louis Reinisch (GC98) • Scott R. Reiter (C95) • Barry Reszel and Lori Miller (C87) • Cynthia A. Reynolds (C72) • Jean Tennes Reynolds (C56) • Abby Weisberg Ribbans (C79) • Roy and Lori Rifkin • Betty Caraway Ritchie (GC64) • Mary E. Rittenhouse (GC92) • Constance S. Rivchun (C73) • R. D. Robb • Eleanore Bieler Robbins (GC54) • Donus D. Roberts (GC65) • Philip T. Roberts (WCAS81) • Barbara Sargent Robinson (GC68) • James E. and Carol Blomgren (C65) Roever • Risa Turner Rohrberger (C81) • Ferguson E. (GJ57) and Nancy Haltom (GC56) Rood • Paul H. Roosevelt (GC52) • Romelle G. Rosemont (C85) • Charles B. and Sharon Hepner (C84) Rosen • Michael and Madeline Pelts Rosenberg • Ruth D. Rosin • Carolyn Jones Ross (GC65) • Donald B. Rossoff (WCAS75) • Lois Kubarewicz Rosstedt (GC86) • Mark S. Roth (C96) • Nicholas B. and Jacqueline Jannotta (C86) Rothenberg • Christine Strike Roussos (C74, GC75) • Steve K. Routman (C84) • J. Phil and Katherine Goldsmith (GC87) Rowe • Steven J. Roy • Carl E. and Jeanne Kurtzon (C63) Rudiger • Patty Hileman Rullman (GC65) • Stephen R. Runng (J74) • Diane Mendelson Russ (GC84) • JoEllen M. Ruvoli (C90) • Faye Morse Ryan (C71) • Thomas M. Ryan (GC83) • John J. (C86) and Laura Brady (J87) Saade • David Eugene Sabel (C01) • Ivan R. and Sandra Sabel • Paul S. Safyan (GC86) • Andrew and Emily Gerson (C86) Saines • Paul A. (WCAS87) and Caroline Boyle (C88) Salina • Richard S. Samson (C83) • Richard A. (EB50) and Barbara Kost (G83) Samuels • Trent V. Sanden (C89) • Dudley W. Sanders (GC82) • John C. III (McC61) and Carolyn Nelson (GBSM66) Sanderson • Jill Kaplan Sandin (C79) • Charles W. Sanford Jr. (C61) • Judith Boca Sanger (C60) • Tamara Joan Schiller (GC96) • John Schlimmer (C54) • Stephen R. (McC69) and Gail Harris (GC79) Schmidt • Henry J. and Madeline Schmuckler • Thomas Michael Schnecke (GC97) • Terri Klein Schottenfeld (C79) • Mary Wexler Schreibstein (C68) • Mary Whiteside Schuette (WCAS60) • Joseph Schuman • Susan Schwartzwald (C78) • Jane Bogardus Seaton (C63) • Howard and Karen Selinger • Diana J. Semmelhack (C81, GJ82) • John D. Seng Jr. • Peter Lucas Senkbeil (GC88, GC95) • Harlan Rene Seyton (C06) • Donald and Hilary Shaefitz • Barbara Brunk Sharkey (WCAS73, GC74) • Clair Whiting Sharpless (C60) • Cody and Alyson Yester (C96) Shelton • Richard Sherman • Erin P. Shields (C82) • Christopher D. Sias (C89) and Christine E. Johnson (McC89) • Jeannette Joullian Sias (GC56) • Katherine G. Siavelis (SESP77, GC78) • Zachary Scott Sidwell (C99) • Joshua A. (C88) and Carter Woodworth (WCAS89) Siegel • Larissa Siegel (C92) • Rachel Marisa Siegel (C06) • Bruce K. (C62) and Sarane Crowther (C61, GC62) Siewerth • David R. and Frances S. Silver • Philip Jay (WCAS75) and Susan Markowitz (C76) Simon • Blair Singer • Stacey Silverman Singer (C84) • Nina E. Skriloff (C80) • Martin and Diane Skrip • David Slavin (C83) and Bari L. Moss • Allan V. and Beth Smith • Ann M. Smith (C89) • Deborah Bishop Smith (C67) • J. Tucker Smith (C81) • Mary E. Smith (GC66) • Roy Smith (C77) • Susan C. Smith-Padgett (GC78) • Jennifer Smyth (C86) • Nancy Hill Snow (GC58) • Seth Snyder • June Sochen (G60, G67) • Brian D. Sogge (EB69) • Andy Sohn (C89) • Janet M. Solecki (C79) • Ronald K. (GC53) and Virginia E. Sommers • Antoinette L. Sottrel • David M. Spaid (C63) • John W. Spalding (C56) • Matthew J. Spangler (C96) • Linda Ellis Spencer (GC69) • Barbara Urbanek Spigner (C76) • Mark and Lolita Spiro • Justin D. Spitzer (C99) and Jenna F. Bans (C98) • John W. Stack • John and Sharon Stanton • Sharon Risk Stark (C62) • Georgia Stathis (C70) • Mary Mangano Stefely (C87, GC88) • Genevieve Aron Steidtmann (C93) • Marla Schiff Stein (C84) • Sarah Partridge Stein (C82) • Susan Friedman Stein (SESP51) • Elaine Rosenthal Steinman (C59) • William C. (KSM74) and Gail Ayres (SESP70) Steinmetz • Margaret L. Stenberg (C54) • Irving Stenn Jr. • Carole Hambley Stephens (C75) • Susan Freed Sternfield (C63) • Susan Lee Sternfield Trust • William W. and Terry Radcliffe (C68) Stocker • Lauren Stone • Robert Stout Jr. and Marolyn Stout Revocable Living Trust/Marolyn D. Stout • Kristine E. Strand (C67, G68) • Richard W. (GC64) and Kathryn Kirksey (GC61) Stream • Linda Murrans Stypulkowski (GC76) • Amanda Sullivan (C87) • Chuan Sun (L04, GC04) • Dana J. Sussman (C98, GC00) • Susan Spiller Swan (C67) • Derby A. Swanson (C82) • Edwin L. (C59, GC60) and Barbara Buehler (C61) Swanson • Susan Basler Swanson (GC93) • Patrick J. Sweeney (FSM88, FSM93) and Sharon G. Brown-Sweeney (C80, GC82, GC94) • Casmir and Dorothy Szczepaniak • Milton Tabbot (C71) • Elizabeth Parker Talbot (GC84) • Lauren W. Tatar (C88) • Hubert V. Taylor (GC64) • Jack and Georgann Tenner Revocable Trust/Georgann Johnson Tenner (GC50) • Edward R. Teske (McC45, GMcC48) • Arthur R. Thieme (C43) • Lola Thompson (GSESP77) • Monique Kastner Thornton (C57) • Joy Crane Thornton-Walter (C57, GC61) • Anne Hardy Thurman (C40, GC66) • Ellen M. Tickner (C73) • Brendan K. Tidwell Cullen (C03) • John and Gretchen Van Riper (C80) Tomasulo • Christopher J. Toy (C03) • Stuart G. (GC81) and Leigh Hartigan (GC82) Trembath • Eric W. (J94) and Julie Highfield (C96) Trott • Terri M. Trotter-Wright (C90) • Susan Struve Trout (GC73) • James L. Tungate (GC70, GC72) • Elizabeth Leebron Tutelman (GC75, GC78) • Lisa S. Ullmann (C92) • Nancy Kafesjian Vale (C53, GC54) • Henry L. and Chamie Grandy (C84) Valentine • James W. Van Buren and Sally Shipman Pitt–Van Buren (C65) • Tova Rachel Vance (GC10) • Eugenio Alejandro Vargas (C09) • Richard G. Jr. and Beverly Potter (C54) Verket • M. Claudine Decker Vignery (GC52) • Debra M. Vinikour (C79) • Tom (C79) and Alima Virtue

• Elizabeth Meese Vonderheide (C67) • Frank and Tracy Robertson (WCAS82) Voss • Stewart T. (GJ72) and Mary Brooks (C72) Vreeland • Alan (C68, GC81) and Sandra L. Wade • Robert H. Waechter (WCAS52) • Benjamin A. (C99) and Elizabeth Wulff (WCAS01) Wagner • Leslie Dolgenow Waldman (C71) • Elizabeth Wilson Walgren-Grewe (C57) • Nancy Norris Walker (GC66) • Derek B. (McC91) and Alesia Wilburn (C92) Wall • Julie C. Wallace (C82) • Spencer Weber Waller (L82) and Laura S. Matalon (C82) • Richard L. and Carolyn Hopkins (GC57) Walton • Deborah Roxin Waltzer (C78) • June Longfellow Warner (C60) • Susan L. Warner (WCAS77, FSM84) • Barbara Calhoun Watson (C69) • Barbara W. Watson • Judith S. Watson (GC84) • Philip Watson • Richard E. Watson (GBSM86) • Peter C. Jr. (GMcC63) and Donna Shpikula (GC62) Wayner • Natalie A. Weber (C54) • Edwin Weinberg and Lesley Levine • Rachel Weinstein • Sharon F. Weinstein (C81) • Lois Porges Weisberg (C46) • Michael Weiser (C85) • Sara M. Weisfeldt (C92) • James R. Weiss (C86) • Robert O. (GC49) and Ann Lawson (GC50) Weiss • Maryl Falen Wesolowski (WCAS82) • Michael C. and Mary Damme (J62, GJ63) Weston • Brigitte L. Whisnant (C90) • Ben White • John C. White (C85) • Peter White (C59) • Robert D. White (McC65) • Charles H. Wickman (CB57) • Walter A. Wiegand (C86) • Andrew Wilder (C98) • Raymond W. Wildtraut • Lawrence Wilkin • Christopher S. Williams (WCAS85, FSM92) • Eric R. (C90) and Petra Sindt (WCAS91) Williams • Jeffrey Williamson • John Anthony Keith Willis (G99) • Elizabeth Pampel Willock (C87) • Jeremy Robert (WCAS55, GSESP61, G71) and Mary Alt (SESP59) Wilson • Mary Sweig Wilson (GC68) • Gaynelle Rothermel Winograd (C70, GC77) • Sandra Cronenwett Wiseley (C57) • Beth N. Wolf (C03) • Stephen and Ruth Wolff • Honore Woodside (WCAS81) • Elaine Harris Woodward (C44) • Lisa Lyons Wright (C84) • Mary James Wright (GC69) • William T. Wronski (C79) • Toya Annette Wyatt (C80, GC81) • Jill Walmsley Zager (GC04) • Phillip M. (McC84) and Ellen Westerlund (C83, GC84) Zee • Philip Joseph Zepeda (GC98) • Jennifer Cutts Zvi (GC71, GC73) • Rebecca L. Zweifel (C93) • Teresa Ann Zwolan (GC85, GC89)

*Annie May Swift Society charter members †Deceased



School of Communication at Northwestern

You make a difference for us. Every day.

Our faculty, students, and alumni continue to spark innovation on stage, in the laboratory, on camera, at the podium, and in clinics.

Your generous support enables us to develop groundbreaking approaches to the study of communication.

You make an impact. Thank you for your donation.

Name _____ Degree/Grad year _____

Spouse's name _____ Degree/Grad year _____

Home address _____

City/State/Zip _____

Phone _____ E-mail _____

Business title/Employer _____

Business address _____

City/State/Zip _____

Phone _____ E-mail _____

Give online at www.giving.northwestern.edu/give

(please specify School of Communication)

Enclosed is a gift to the School of Communication of \$ _____.

I wish to designate my gift in the following manner:

\$ _____ Unrestricted (most vital priorities)

\$ _____ Student activities

\$ _____ Other _____

Charge my credit card: Visa MasterCard American Express

Account number _____ Exp. date _____

Signature _____

My employer matches gifts. Form enclosed Employer has been notified

Please detach this card and mail it in the enclosed return envelope.

Editorial and Design

Lori Rader-Day, Director of Communications
Kingsley Day, Editor
Victoria Lata, Designer

Photography

Cover, December: Sarah Watkins (GC12) Photography
January, September: Justin Barbin (C11) Photography
February: Aaron Fuqua; University Archives; various
March: Liz Lauren for Goodman Theatre
April: Hannah Wells (C11), writer and director;
Dana Pavisich (C12), producer; Edward Paget (C12),
director of photography
May, October: Andrew Campbell Photography
June: Jim Prisching Photography
July: Ozge Samanci
August: Kevin Berne Photography for California
Shakespeare Theater
November: Eric Patrick

www.communication.northwestern.edu



© 20110 Northwestern University. All rights reserved.

Produced by University Relations. 12-11/4M/KD-VL/1032-1