

UNIVERSITY *of* WASHINGTON

# The Nightingale Challenge Leadership Series

---

[impact.nursing.uw.edu](http://impact.nursing.uw.edu)

Washington State  
Health Care Authority

 **WCN**  
WASHINGTON CENTER FOR NURSING

**W**



# Public Health – Community Leadership

*The Year of the Nurse*

**Patty Hayes, RN, MN**  
Director

**June 30, 2020**



# Public Health

---

## Seattle & King County



We work to protect and improve the health and well-being of all people in King County as measured by increasing the number of healthy years that people live and eliminating health disparities.



# How does public health achieve our mission?



- Consider the entire population
- Convening –  
Community  
Partnerships
- Bring science and data  
to decision making

# Key Public Health activities

- Communicable disease prevention – investigation and immunization
- Chronic disease prevention
- Environmental health
- Assure access to clinical care
- Parent-child health
- Vital records
- Assessment and epidemiology
- Communication/public information
- Policy development
- Emergency preparedness

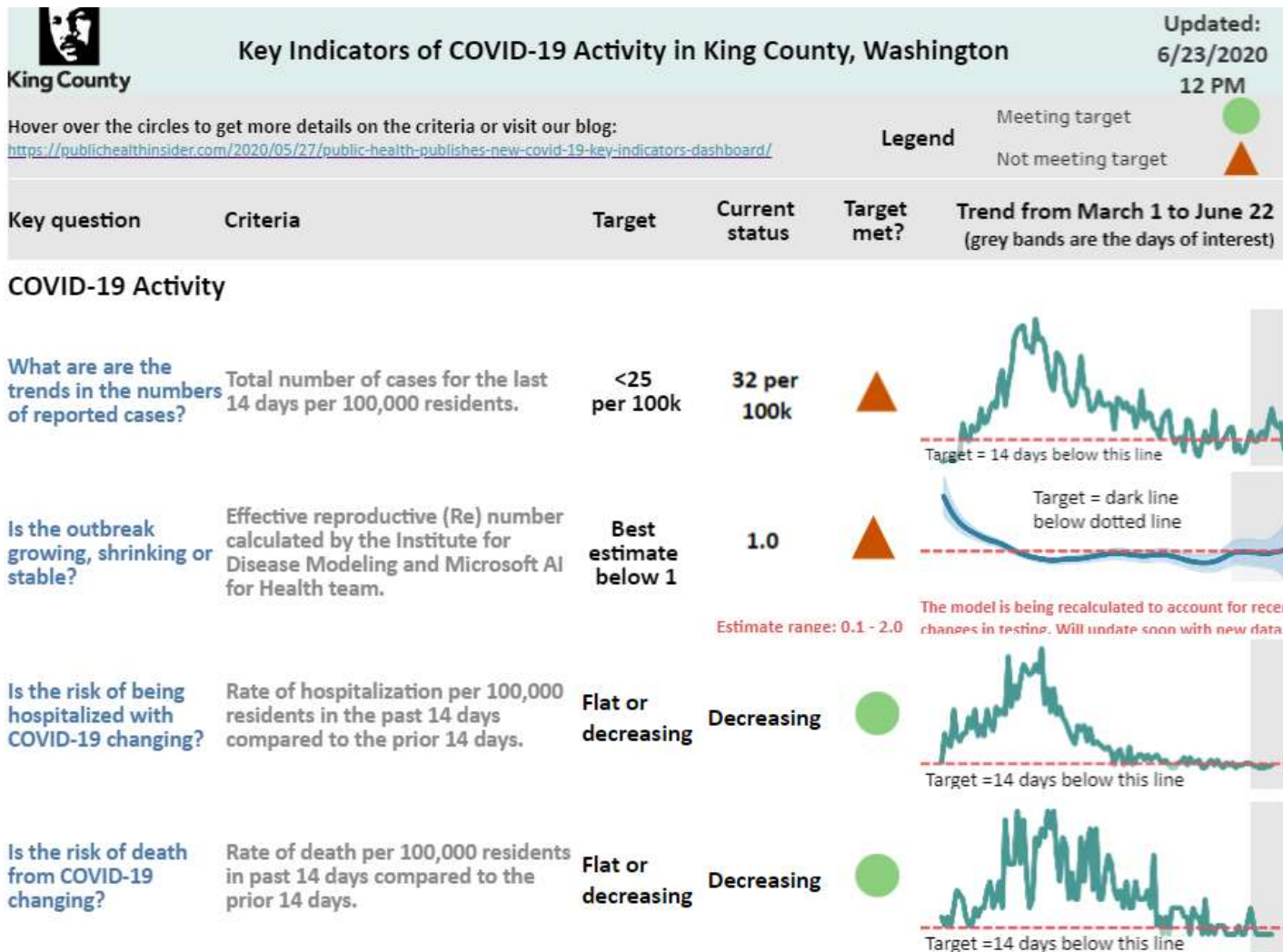




# Novel coronavirus

- COVID-19 has placed incredible demands on our community and the entire public health and health sectors. As of 6/19/20:
  - 9096 King County residents have tested positive
  - 1540 residents have been hospitalized
  - 584 residents have died

# Key indicators (part 1)



# Key indicators (part 2)

## Testing Capacity

Are we testing enough to detect most cases?

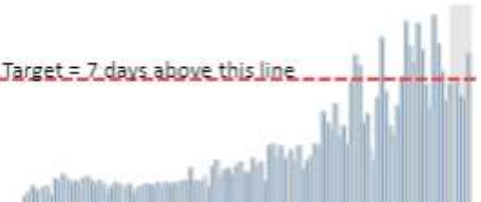
Number of people tested for each positive result over the last 7 days.

$\geq 50$

48



Target = 7 days above this line



Are we testing quickly enough? (prompt testing is needed to decrease transmission)

Number of days (median) between illness onset and test date over the last 7 days.

$\leq 2$

3



Target = at or below this line



## Healthcare System Readiness

How many beds are occupied in our hospitals?

Percent of beds occupied across hospitals in King County.

$\leq 80\%$



Target = below this line



What proportion of hospital beds are filled with COVID-19 patients?

Percent of King County hospital beds serving COVID patients.

$\leq 10\%$

2%



Target = below this line





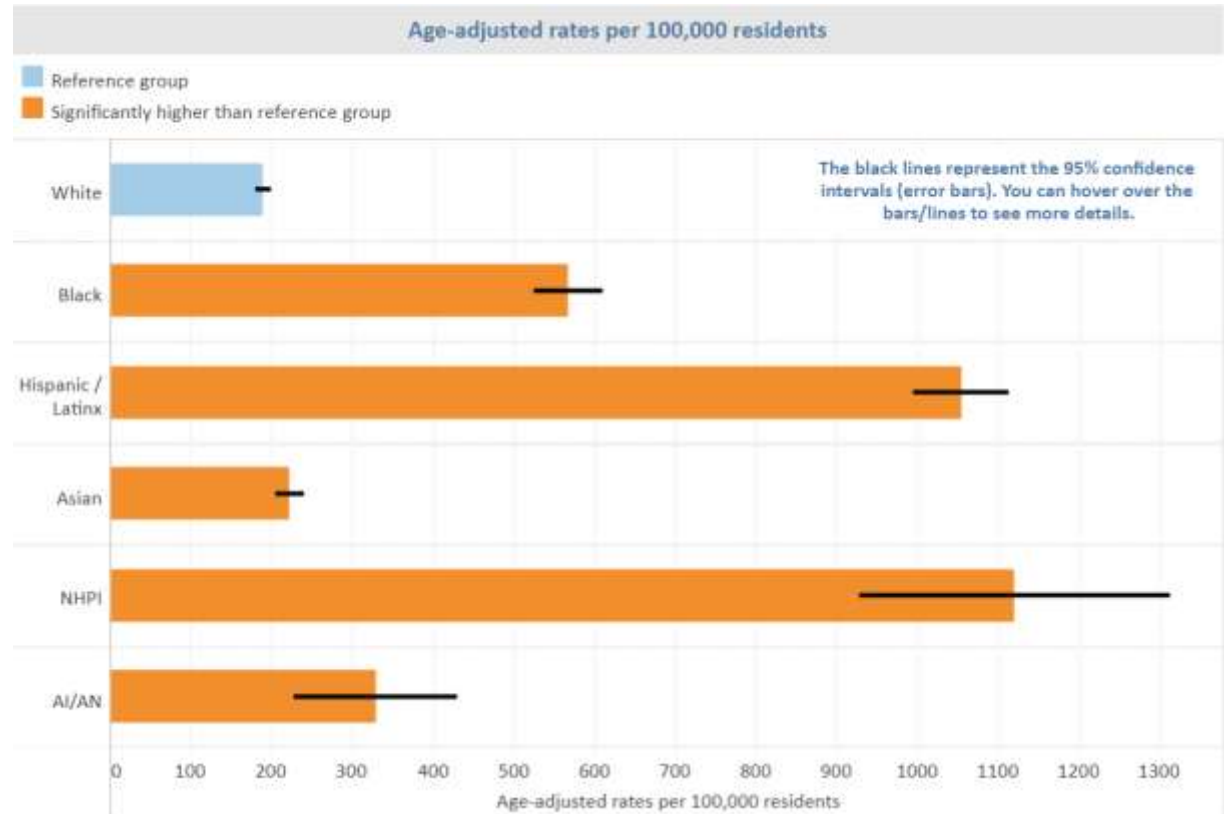
## Who is being impacted?

- The pandemic started locally in late February in long term care facilities where as many as 25% of infected residents have died
- More recently, we have seen disproportionate impacts on communities of color



# Systemic inequities are playing out in COVID-19 disease rates

- Rates are per 100,000 people
- Black, Hispanic and Native Hawaiian people are over represented
- Reflects inequities already existing in our communities



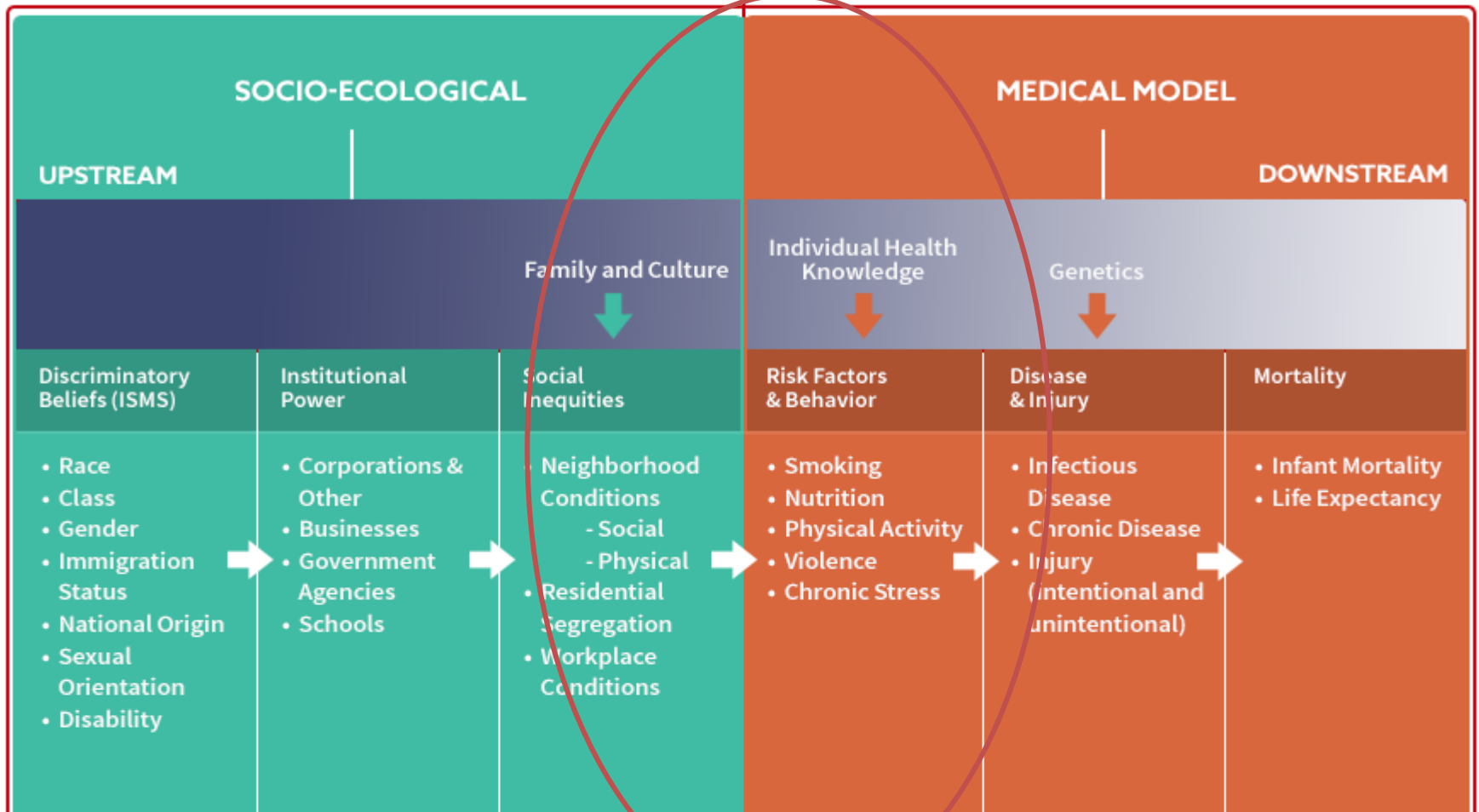
# Key economic and social impacts of COVID-19 in King County

Economic	Social	Health
<p><b>Unemployment</b></p> <p><b>390,100+</b> new unemployment claims filed by King County residents from March 1 to June 6, 2020</p>	<p><b>Food Insecurity</b></p> <p><b>↑ 14,800</b> more King County households received <b>Basic Food assistance</b> in May than January 2020, a 15.1% increase</p>	<p><b>Healthcare</b></p> <p><b>↑ 5,200</b> more King County residents were enrolled in <b>Medicaid</b> in April than in January 2020</p>
<p><b>Housing</b></p> <p><b>38%</b> of calls to 2-1-1 hotline requested <b>housing-related assistance</b> from April 29-May 19, 2020</p>	<p><b>Food Insecurity</b></p> <p><b>↑ 7%</b> more women and children were enrolled in PHSKC's <b>WIC nutrition program</b> in April than January 2020</p>	<p><b>Mental Health and Suicide</b></p> <p><b>16%</b> of middle and high school youth made a plan to attempt suicide in the past year before COVID-19</p>
<p><b>Traffic</b></p> <p><b>↓ -34%</b> decrease in local highway traffic on June 14, 2020 compared to 2019</p>	<p><b>Domestic Violence</b></p> <p><b>↑ 16%</b> increase in <b>domestic violence</b> calls to Seattle Police from Jan-April 2020 compared to 2019</p>	<p><b>Behavioral Health</b></p> <p><i>In development</i></p>
	<p><b>Internet Access</b></p> <p><b>67,000</b> King County households (7.5%) have <b>no internet access</b></p>	



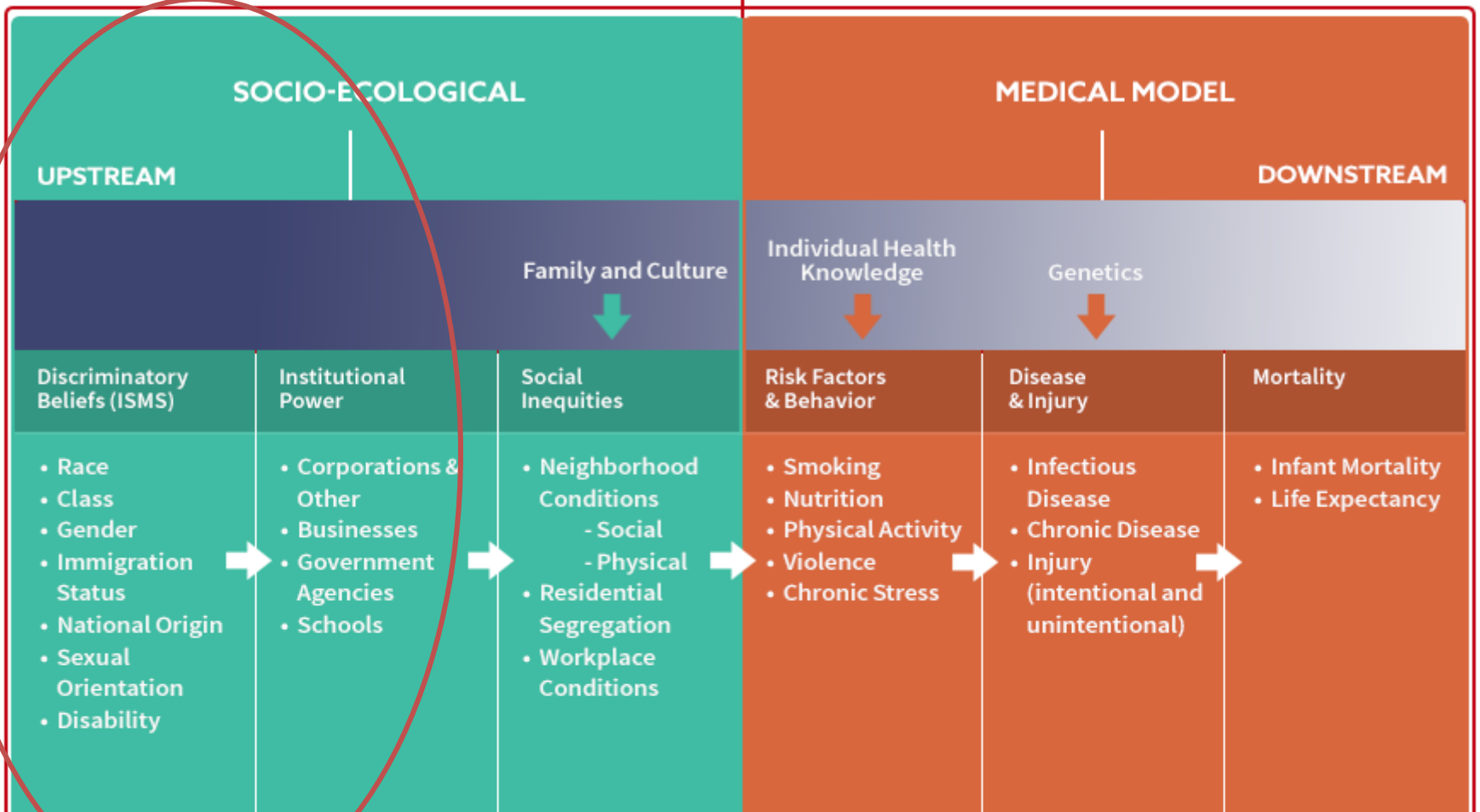
**Racism is a public health crisis**

# A framework for Health Equity

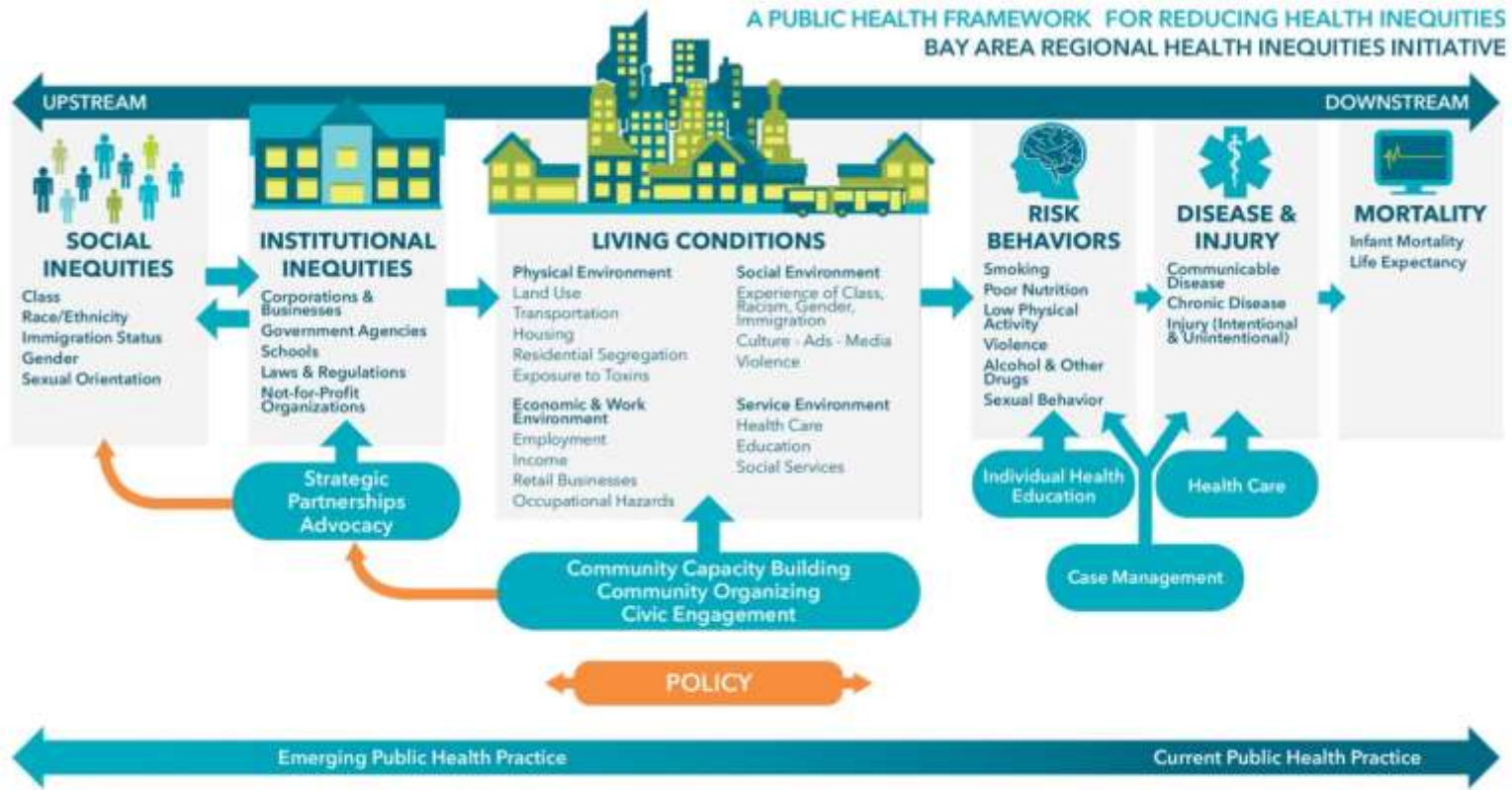




# A framework for Health Equity



# A framework for health equity



# NURSING

- Nurses are systems thinkers
- Nurses see illness in the context of community
- The community context shows the impact of racism and disparities in health outcomes
- Leadership means standing up for your patients, particularly when you think they're receiving inequitable treatment

# LEADERSHIP OPPORTUNITIES IN NURSING

- **Working with Elected Officials to highlight needs and the impact of policy-making**
- **Creating nurse roles in the workplace for systems advocacy**
- **Participation in Boards, Commissions and elected officials at local, state and federal level**

**IMAGINE *YOUR* ROAD**

**Questions?**



UNIVERSITY *of* WASHINGTON

**“LEAD FROM THE START”  
GUEST SPEAKER,  
CAROL BOSTON-FLEISCHHAUER**

**TUESDAY, JULY 14  
4:00-5:00PM**

---



To learn more about The Nightingale Leadership Series and register for this webinar free of charge, visit:

**[impact.nursing.uw.edu](http://impact.nursing.uw.edu)**

Washington State  
Health Care Authority

It's About Washington's Health  
**WCN**  
WASHINGTON CENTER FOR NURSING

**W**