



An Historic Agreement

PGST and Pope Resources reach deal that includes land purchase, environmental conservation, and partnership in redevelopment of Port Gamble



Sealed with a handshake: *PGS Tribal Chairman Jeromy Sullivan and Thomas Ringo, President & CEO of Pope Resources, shake hands during the signing of an agreement that includes the purchase of 937 acres of land by the Tribe.*

Leaders from the Port Gamble S'Klallam Tribe and Pope Resources today announced an historic agreement, embarking on a path for stewardship of land, forest, and water to anchor the futures of the Town of Port Gamble and the Port Gamble S'Klallam Tribe. This agreement comes after a long history, fraught with conflict, that began 166 years ago when the founders of the companies preceding Pope Resources first arrived to the area. The signing of this agreement is a significant moment that sets the two neighboring communities on a mutually positive course for the future.

The details of the final agreement include:

- Pope Resources will sell approximately 937 acres of timberland to the Port Gamble S'Klallam Tribe, adjacent to the tribe's existing reservation.
- Port Gamble S'Klallam Tribe is securing funding for the purchase of a conservation easement on approximately 18.4 acres and adjacent tidelands along the former mill site's shoreline in Port Gamble to protect the site for the purpose of restoration. Instead of being developed, this site is slated for restoration and rehabilitation

of ecological processes and conservation values and will be accessible to the public.

- Pope Resources will lease portions of its tidelands in Port Gamble Bay to the Port Gamble S'Klallam Tribe.
- Port Gamble S'Klallam Tribe and Pope Resources will work together with Kitsap County, other tribes, and the North Kitsap community for the redevelopment and restoration of Port Gamble to ensure this process includes modern, environmentally responsible infrastructure and design, protections for water quality and shoreline habitats, and acknowledgement of cultural heritage and history in the area.

This agreement is the result of five years of discussions between the Port Gamble S'Klallam Tribe and Pope Resources, which have included a wide range of issues dating back to when the founders of Pope Resources arrived in Port Gamble Bay in 1853. While this was not the first point of European contact for the Port Gamble S'Klallam Tribe, it had a profound impact on the community, which relied on fish and shellfish for subsistence, as it still does today.

~Historic Agreement
Continued on Page 7



nəx^wqiyt nəx^ws'káyám'

PGST Vision Statement

Our vision is to achieve the full potential of the Port Gamble S'Klallam Tribal sovereign nation to be self-sufficient, proud, strong, healthy, educated and respected.

PGST Mission Statement

The mission of the Port Gamble S'Klallam Tribe is to exercise sovereignty and ensure self-determination and self-sufficiency through visionary leadership. We will ensure the health, welfare and economic success of a vibrant community through education, economic development, preservation and protection of the rich culture, traditions, language, homelands, and natural resources of our Tribe.

Port Gamble S'Klallam Tribe

31912 Little Boston Road NE
Kingston, WA 98346

Telephone: 360-297-2646
Fax: 360-297-7097

Website: www.pgst.nsn.us
Email: info@pgst.nsn.us

Tribal Council

Jeromy Sullivan, Chairman
Chris Tom, Vice Chairman
Renee Veregge, Councilman

Matt Ives, Councilman
Jamie Aikman, Councilman
Donovan Ashworth, Councilman

Entity Directors

- Kelly Sullivan, Executive Director
- Betty Decoteau, CFO
- Audrey Gugel, Administrative Director of Tribal Government
- Kara Wright, Administrative Director of Tribal Services
- Chris Placentia, Chief Executive Office, Noo-Kayet
- Leo Culloo, General Manager, The Point Casino
- Nic'cola Armstrong, Executive Director, Tribal Gaming Agency
- Joan Garrow, PGS Foundation Executive Director
- Craig Dougall, Port Gamble S'Klallam Housing Authority Executive Director

This newsletter is a product of the Port Gamble S'Klallam Tribe. For advertising inquiries or to submit items for publication, please contact Sharon Purser at sharonp@pgst.nsn.us or Ginger Vaughan at ginger@quinnbrein.com.



PGST Staff Present to Navy, Coast Guard for American Indian Heritage Month



Sam Phillips, Gina Steiner, Shallee Baker, and Laura Price, who presented to the U.S. Coast Guard in November

November is American Indian Heritage Month and, in commemoration, the Port Gamble S’Klallam Tribe was invited to present, separately, to the U.S. Navy and the U.S. Coast Guard.

On November 14, tribal attorney Gina Steiner; Shallee Baker, Outreach & Education Coordinator ; and Cultural Resources Director Laura Price went to Navy Base Kitsap at Bangor to speak to Navy servicemen and officers on site and those across the U.S., via video conferencing, about tribal history, national heritage, sovereignty, language, traditional foods and medicine, Usual & Accustomed Areas, and reserved treaty rights.

Less than a week later, the trio answered the call again—this time joined by PGST Environmental Scientist Sam Phillips—presenting “Honoring Our Nations: Building Strength Through Understanding” to the U.S. Coast Guard Sector Puget Sound Base Seattle. Topics shared with the large and enthusiastic group of Coast Guard officers included tribal sovereignty, reserved treaty rights, water quality, natural resources, sustainable practices, ties to the land, canoe journey, and language revitalization.

During the Coast Guard presentation, attendees were given the opportunity to sample traditional medicines, salves, and food prepared by Shallee Baker and family. Afterwards, the four PGST representatives took a tour of the USCHC Healy, an ice-breaker ship that conducts scientific research in the arctic.

Acknowledgement and thanks to the U.S. Navy and the U.S. Coast Guard for inviting PGST staff to present and SWFP Management Analyst Naomi Johnson and USCG Tribal Liaison Jeff Zappen for arranging the respective visits.

Key



Tribal Business



Clinic & Health



Natural Resources



Community News



Craig Dougall Named as PGST Housing Director, Brings Big Ideas for Elder Housing and Dealing with Homelessness

Craig Dougall has been named PGST's new Housing Director.

Dougall comes to PGST after more than 30 years working for tribes across the U.S. in similar capacities. Some of his previous appointments have included with Skokomish, the Navajo Nation, Nisqually, and Suquamish.

In his introduction to Tribal Council on Monday, November 25, he said, "I hope my travels and experience will come to bear so we can bring new and different programs and opportunities here."

During his first week on the job earlier in November, Dougall was tasked with assembling PGST's 2020 Indian Housing Plan, which is required to apply for funds from the Indian

Housing Block Grant from the Department of Housing and Urban Development (HUD).

While the HUD funds usually account for around \$950K of Housing's budget, according to Dougall, "(HUD grant funds) don't do everything we would want to do, especially when it comes to elder housing and addressing homelessness. This is a significant amount of money, but it is our operational money, not how we grow programs."

Dougall is working on funding options for a 30-house elder project, with adjacent community center and dining hall, to be built at Warrior Ridge.

He is also looking at applying for

money from the Homeless Assistance Grant (HAG), a \$1.6 billion pool of money from HUD.

"Most tribes have hidden homeless. Community members who are couch surfing, camping, or moving from place-to-place. These people need support," said Dougall, who in previous positions created safe shelter options for people experiencing difficult times. He plans to apply for HAG funds as soon as possible to go towards tiny homes or other temporary housing solutions.

During the November 25 Tribal Council meeting, Darlene Peters and Natashe Streun were approved for appointments to the Housing Board.



Garrett Sitting Dog Receives Multiple Honors

Garrett Sitting Dog, a senior at Kingston High School and member of the Port Gamble S'Klallam Tribe, was selected by KHS as September's Athlete of the Month and October's Student of the Month.

At a recent end of the season award ceremony, Garrett's team members selected him to receive a Buccaneer's Award based on his sportsmanship and leadership. He was also chosen as this year's Homecoming King.

Garrett has been on both the football and baseball teams at KHS since he

was a freshman and has maintained a high level of academic achievement. He is also involved in many cultural activities within the Tribe. In recent years, he represented the Tribe as Tribal Warrior.

Garrett's future plans are to become a biologist, concentrating on food sovereignty through the preservation of the Tribe's natural resources. Through the teaching of his grandfather, Daryl Sullivan, he has become skilled at hunting, gathering and preparing wild game and seafood by traditional means.



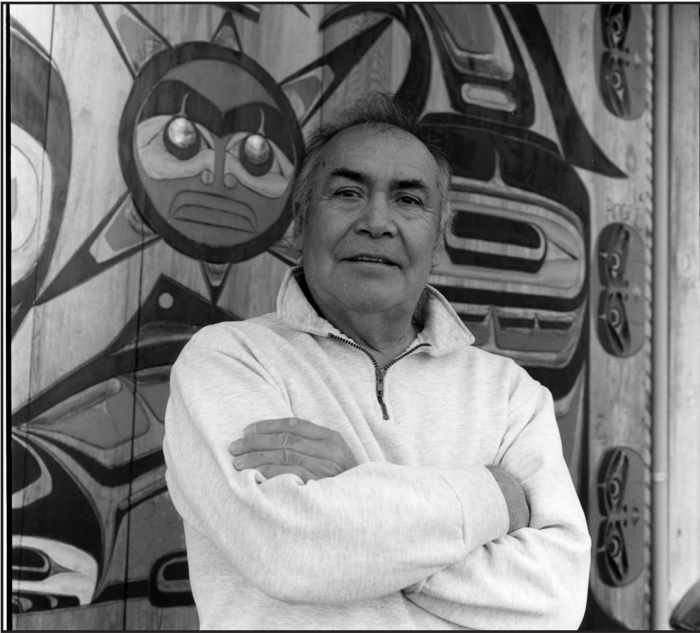
Garrett Sitting Dog

Garret's parents, Jolene Sullivan and Brent Sitting Dog, are extremely proud of him. His mother says Garrett has such a humble attitude and is not very comfortable in the lime-light, but he is a great young man and an outstanding role model.



Remembering Joe Ives

Beloved Tribal member, master carver, and animal lover dies at 72



Joseph Erval Ives, 72, of Kingston, WA., passed away peacefully early Monday morning, the 4th of November. Born in Bremerton, he was the son of Joseph Cornelius and Geneva Vivian (Jones) Ives and was a lifelong resident of Little Boston, WA.

Joe completed his high school education and followed that with learning the art of TV and small Radio Repair at Clover Technical School. Joe worked in the repair field for a while and ultimately went to work for the Port Gamble S'Klallam Tribe, from where he retired after 17 years.

A member of the S'Klallam Worship Center, Joe was also an Elder of Port Gamble S'Klallam, a member of several softball Co-Ed Men's teams, and a teacher at NWIC. With all of his involvement and skills, Joe will best be remembered for being a highly talented and prestigious Master Carver with many of his works displayed at The Point Casino & Hotel, along with many other places throughout the world.

In addition to his parents Joseph and Geneva, Joe was preceded in death by his granddaughter Shannon Sullivan of Kingston and his two sisters Martina Armstrong of Suquamish and Carmelita Seachord of Kingston, WA.

Joe is survived by his loving family, including his six

daughters: Misty Ann Bowe chop (David), Bryna Lawrence, Star Lee Hagen (Joshua), Tierrah Klatush (Jeremy) Jade Cree Ives (Jay), Angel Lynn Ives (Erick), two sons; Shane Duane Ives (Cecelia), and Joseph Neilius Ives (Brandalynn), all of Kingston. Twenty-two grandchildren and five great-grandchildren also survive him.

A beloved father, bompa, brother, uncle, nephew, cousin, friend, and mentor, he meant so much to so many. His face lit up around family with a smile that was priceless. His life accomplishments include time spent as a musician, master carver, champion softball player, horseshoe player, teacher, mentor, and all-around good friend; none of which mattered more to him than his family.

He had a playful and humorous approach with his affection, making everyone feel special. He had some unusual pets during his life (deer, monkeys, an alligator, a crow, a chinchilla). In his later years, he came to favor chihuahuas. He exercised his treaty rights because of his love for our cultural seafoods (horseclams, clams, oysters & fish). He loved classic cars and motorcycles, and always had a nice ride to cruise in.

We were blessed to share a beautiful life with him, He made his mark here on earth. His memories will forever be engraved in our hearts.



Master carver Joe Ives works on a mask in his workshop in 2015.



Natural Resources Studies Bluff, Cemetery, Sea Level Rise for Hazard Mitigation Plan

By Sam Phillips

PGST Environmental Scientist

The Tribe is updating its FEMA approved Hazard Mitigation Plan. The Hazard Mitigation Plan is a document that emergency managers use to understand the potential risk of natural hazards and best practices to mitigate these hazards. Shoreline bluff erosion is one of the natural hazards that we are evaluating as part of the Hazard Mitigation Plan. The update will include information we develop from scientists with the University of Washington (UW), building on an earlier shoreline management study that identified the areas south of Point Julia at generally higher risk of erosion than those north of Point Julia.

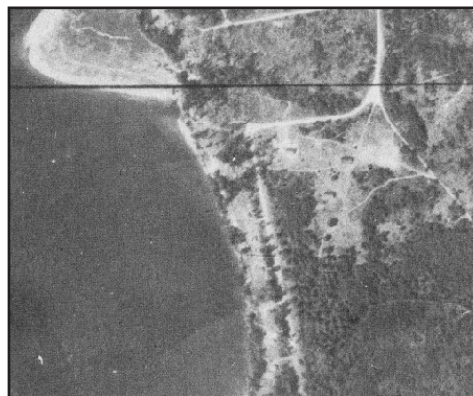
Scientists from UW have been traversing the reservation taking geologic samples in bluffs, gullies and road cuts to produce a geologic map. The map will improve our understanding of the specific risk of landslides and erosion with slope stability modeling. Scientists are also collecting a months-long record of water levels in the bay to improve our understanding of tidal cycles and storms. In addition, they are collecting topographic beach profiles with GPS instruments to monitor changes to our beaches into the future, as well as looking at historical images to understand the change that has already happened.

The bluff provides sand, silt and gravel to the beach as it naturally erodes, and the wind and waves move the sand along the shore. The process is

an important component of the Port Gamble Bay ecosystem. However, the rate at which it erodes and moves along the shore can change with a changing climate. If sea level rises, the bluff will be exposed to water and waves more frequently and changing precipitation will affect groundwater levels that can make slopes more susceptible to landslides. We think the best way to plan for the future is with careful monitoring. We will continue to collect beach and bluff profiles and aerial photography via drone flights. We think the way to manage the risk in the present is to enhance the native vegetation with roots that hold slopes together and soak up rainfall, and to minimize impervious surfaces that concentrate rain runoff. (Come talk to natural resources staff about ways we can help you protect your lot!)

We are concerned about the potential erosion of the bluff along the cemetery. Over the years, artifacts and human remains have been found along the beach and below the bluff. People wondered whether the cemetery bluff was eroding. We wanted to under-

stand the risk to the cemetery, so the scientists are modeling the stability using a factor of safety, or the ratio of driving forces (gravity) to resisting forces (friction). We can estimate the hazard, i.e. the probability of a landslide, but we also need to understand the consequence, i.e. the harm that will occur if the landslide happens. So we wanted to learn whether there are unmarked graves near the bluff edge. We hired a geophysical consultant to conduct a ground penetrating radar survey of the cemetery. The radar pulses show images of the subsurface. Although we have not seen any obvious signs of graves near the bluff edge so far, we are continuing to study the area. You may have seen lots of colorful flags planted in the cemetery. These flags were used to mark a grid system along which we pushed the ground penetrating radar instrument. The flags were marked with a GPS so we can find the places where the ground penetrating radar data indicates a potential gravesite.



1944 (left) and 1961 (right) aerial images from UW Libraries. Images like these are used by PGST Natural Resources to assess bluff erosion and its impacts.

Historic Agreement

Continued from Front Page



Sullivan and Ringo sign the agreement as PGST representatives (L to R) Kelly Sullivan, Renee Veregge, and Roma Call along with Adrian Miller, from Pope Resources, look on.

“The Port Gamble S’Klallam have a long history with Pope Resources. The Mill played a big role in our lives as a source of employment as we adapted to European settlement, but also hurt Port Gamble Bay and its shoreline,” said Jeromy Sullivan, Chairman of the Port Gamble S’Klallam Tribe.

“The last several years have brought good things: the cleanup work on the Bay and, of course, our conversations with Pope Resources that led to this deal. We look forward to the future and watching this area continue to heal and come back to life. Our culture and traditions depend on it.”

According to tribal oral history, the S’Klallams complied with the request that they relocate across the bay to Point Julia, with the promise that they would always have work at the mill and lumber to

build their new homes. From the day the mill first opened in 1853 until it closed in 1995, S’Klallams worked in the sawmill.

“We look forward to the future and watching this area continue to heal and come back to life.

Our culture and traditions depend on it.”

During this period, water quality in Port Gamble Bay deteriorated, limiting the historic livelihood of Tribal members and impacting the ecological functions of the bay and shoreline.

The closure of the mill began a new chapter in the relationship between

Pope Resources and the Port Gamble S’Klallam Tribe. Pope Resources had significant environmental clean-up obligations, and interest in redeveloping the historic town of Port Gamble. The Tribe wanted Port Gamble Bay cleaned and restored and the footprint of future development limited to respect the environmental and cultural significance of the area. The 106-acre aquatic cleanup has removed over 8,500 mainly creosote pilings and 110,000 cubic yards of wood waste and sediments.

“Pope Resources deeply appreciates the long history our company has with the Port Gamble S’Klallam Tribe. The actions agreed to today will set a visionary path to a future of mutual responsibility and environmental stewardship, and we look forward to continuing our partnership as neighbors,” said Tom Ringo, President and CEO of Pope Resources. “This agreement is not only good for the S’Klallam people and Pope Resources; it will benefit all people in the region.”

Other details of the mediated agreement include:

- Regular meetings between Pope Resources and the Port Gamble S’Klallam Tribe to discuss ongoing plans for the area.
- Development of a Recreation Plan for public water access and passive recreation opportunities, such as trails.
- Development of a Stewardship & Restoration plan to design shoreline restoration.
- Measures to protect streams, wetlands and shoreline in the area.



Around The Rez

Opportunities and announcements for the S'Klallam Community

Noo-Kayet Seeking Board Members

The Noo-Kayet Development Corporation is accepting Letters of Interest for three voting Board positions.

An ideal candidate would possess experience in financial performance and forecasting; a background in human resources and business, including the tribal gaming and/or hospitality industry; and an understanding of how to build the customer experience.

Board members serve a three-year term and are expected to attend all meetings, be 21 years of age, hold a bachelor's degree in business, management, finance,

or a related field or have equivalent work experience; and not have been an employee of NKDC or PGST for at least 12 months prior to appointment date.

For more information or to submit a Letter of Intent, please contact Kristina Brysz at Kbrysz@noo-kayet.com or 360-297-7461. Letters of Intent are due by 3 pm on Friday, December 6.

Sponsor a Child with the Giving Tree

The Giving Tree is up in the lobby of the Tribal Center. Please consider

sponsoring a child (or more than one!) to help ensure that every child in foster care and on TANF receives a Christmas Gift.

Each tag includes a child's age and a small wish list. To participate, choose a tag and leave the child's tag number and your contact info with the front desk so we can keep track of sponsorships.

Please drop off gifts, including the original tag, to Ciarra Hanna or Shayna Reynolds in CFS by Friday, December 13.



Matt Ives Speaks at Native American Culture Fair

On November 21, the Sixth Annual Native American Culture Fair at Peninsula College took place.

This cultural event spotlights youth voices and Native American history, languages, and traditions. This year's theme was "We Are Here. We Are One."

Dignitaries, elders, youth, students, and other guests in attendance were able to view student displays, presentations, and exhibits prepared by PAHS Native American programs, Elwha Youth Coalition, Jamestown S'Klallam tribe, the Makah tribe, and other tribal partners. Included in the program was a welcome, blessing and honor song to commemorate a special Tribal Flags presentation where Councilman Matt Ives spoke on behalf of Port Gamble S'Klallam Tribe.



Next time you visit look for our flag!

Left: The PGST flag flying high at Peninsula College.

Above: PGST Councilperson Matt Ives speaks at the 6th Annual Native American Culture Fair.

All photos courtesy of Tim Brya, PenCol IT/Media





Celebrate the Holiday Season at The Point!

Looking for some holiday cash? The Point will celebrate Cash-Mas on Tuesdays, December 3rd and 10th. Drawings will be held each day from 5 -9pm for \$500 cash. Plus, don't miss our Bonus Cash Day drawings on December 12th, 19th and 26th at 2, 5, and 7pm with four \$250 drawings.

Also in December, The Point's Blue Friday Ultimate 12th Fan Drawings continue with a chance to win two sideline field tickets to the final two Hawks home games in December. Drawings will be held on Fridays, December 13th and 20th at 9pm. Not going to the game? Catch all the games in The Boom Room on our 19 foot screen. While you're at it, don't miss the final month of our \$25,000 pro football Pick'Em played weekly for a chance to win \$1,000.00. See the Wildcard Club for details.

Join us on Christmas Day for our Christmas Day Buffet,

available for \$18.95 (1/2 off for kids 6-11, free for 5 & under) from 11am-8 pm. Our Seafood Feast will be held on New Year's Eve in Market Fresh from 4-10pm for \$29.95.

In The Boom Room, don't miss Karaoke on Thursday nights. Celebrate New Year's Eve in The Boom Room with live music from KRY at 8 pm and DJ Traxx at midnight. There is no cover. Also in The Boom Room, live music will be offered every Saturday December 7- 21.

Don't miss New Year's Eve at The Point with our Noon Year's Day Drawings from 12pm - 4pm. Eight Total drawings will be held for \$500 each. Then in the New Year we'll hold two \$2,020 cash drawings at 12:30am and 1:30am. And be sure to celebrate the New Year with our Red Eye Breakfast Buffet from midnight to 2am and our New Year's Day Brunch Buffet from 8am to 3pm.

Community Calendar: DECEMBER 2019

| SUNDAY | MONDAY | TUESDAY | WEDNESDAY | THURSDAY | FRIDAY | SATURDAY |
|--|----------------------|------------------------------------|-------------------------------|---------------------------------|--|----------|
| 1 | 2 | 3 | 4 | 5 | 6 Elders Christmas Bazaar, 10am - 4pm, Tribal Kitchen | 7 |
| 8 "The Gift" 6 pm, S'Klallam Worship Center | 9 | 10 | 11 | 12 | 13 Giving Tree Gifts Due to CFS | 14 |
| 15 | 16 Tribal Council | 17 Community Christmas Party | 18 | 19 Elders Christmas Party | 20 PGST Staff Christmas Party | 21 |
| 22 | 23 | 24 Tribal Center Closed | 25 Tribal Center Closed | 26 Tribal Center Closed | 27 | 28 |
| 29 | 30 | 31 Tribal Center Closed | | | | |



A Happy Birthday to You!

Celebrating your special day in the month of DECEMBER!

December 1

Stormy Clausen
Tristan Combes
Michael Fulton
Lenard Jackson
Joiah Knight

December 2

Brett DeCoteau
James Ives Jr.
Gary Lawrence Jr
Gordon Najera Jr.
Jeminia Tom

December 3

Anthony Bailey

December 4

Keith Fundak
Aiyanna Hlavinka
Sharon Ives

December 5

Kristin McCray
Lily Moff

December 6

Bradley Abad

December 7

Bear Fulton
Rigel Mosher
Loretta Traxel

December 8

Amanda Countryman
Phillip Fulton
Brayden Jackson

December 9

Tauna Clausen
Halle Purser
Angela Straw
Hawa Tunkara

December 10

Dana Folz
Chelsi Hunt
Krista Jacobsen
Xavier Redbird
Brooke Weedman
Larry Wooster

December 11

Marion Ives
Branden Kelliher

December 12

Lisa Brandt
Daniel DeCoteau Sr.
Bruce DeCoteau
Jericho Hanson

December 13

Karalee Crawford
Janice Given
Christopher Jones
Lelaina Knight

December 14

Maleri Ashworth
Marlo Charles
Kalista Flores
Matthew Oliver
Christina White

December 15

Hoksila Archambault
Tonya Bray
Mychal Oliver
Michael Sullivan Jr.
Leanne Tom

December 16

John Aikman
Cody Najera
Leeann Rogers

December 17

Marie Anderson
David Ensslin
Alison Fulton
Heather George
Lawrence George
Jennifer Janas
Daryl Sullivan
Nicholas Sullivan

December 18

Bryce Decoteau
Bronson Folz-Edwards
Destiny Jeffreys
Gabrielle Turnier

December 19

Lori Joseph
Joseph Oliver
Jordan Purser
Elisha Stark

December 20

Theodore George
Jack Grady
Nathaniel Lehman
Dawn McElroy
Sarah Wheeler

December 21

Taylor Purser
Joseph Scheibner
Misty Sorensen
Greyson West
Fred Woodruff III

December 22

Keith Fulton
Bridgette Hart
Ricky Sullivan
Morgan Veregge

December 23

Damien Charles
Terrance Seachord

December 24

Shelby Bray
Forrest Holtyn
Jack Knox
Cyrene Tooze
Aiyana Wellman Merritt

December 25

Alysia Anderson
Samuel Bidtah
Tina Murphy
Debra Payne

December 26

Zachariah Adams
Clara Jackson
Tracy Seachord

December 27

George Jones
Hope Jones-Calhoun
Deanna Lund
Sawyer Purser

December 28

Jonathan Black
Kira Moran
Jaxon Reynolds

December 29

Jo Ann Decoteau,
Anthony Pinkston
Calvin Williams

December 30

Britney Weedman

December 31

Wanda Medina
Matthew Jones
Matthew Tom
Rondi Webb
Lisa Weicht



CHECK IT OUT AT YOUR LITTLE BOSTON LIBRARY

by Tomi Whalen, Branch Manager, Little Boston Library

COMMUNITY NEWS — Look for us at the Elders Bazaar on December 6 please. At our table we will have material to create upcycled bows, wrapping for smaller items, and gift tags to finish decorating your newly purchased gifts. Activities at the library this month include:

- **Book Group:** *December 4, 1-2 pm.* “Sourdough” by Robin Sloan.
- **Crafternoon:** *December 4, 11 and 18, 2:30-3:30 pm.* Bring your craft project or try one of ours. Discover our extensive craft book collection and find inspiration for your next project.
- **Crafting for all Ages:** *December 6, 10 am.-2 pm.* Drop in to create seasonal themed crafts. Appropriate for all ages. Make an origami box, special magnets, and upcycled beanies.
- **Family STEM:** *December 18, 4-5 pm.* Explore a different science, technology, engineering, or math topic each month with hands-on activities for families.
- **One-to-One Tech Help:** *December 19, 3-4 pm.* We help with downloading eBooks, audiobooks, music and

magazines. Book up to an hour with a tutor. Please call to register.

Kitsap Regional Library will be closed December 24 and 25 for the holidays and will close early (5 pm.) on December 31 for New Year’s Eve.

For updated program information, check our website krl.org or call us at 360-297-2670.

See you at the library!



Happy Holidays!



nəx^wqíyt nəx^ws'káyám

PORT GAMBLE S'KLALLAM TRIBE

31912 Little Boston Rd. NE
Kingston, Wash. 98346

PRSR STD
U.S.POSTAGE

PAID

Silverdale, WA
Permit # 111

TIDE TABLES FOR PORT GAMBLE, WASHINGTON

DECEMBER 2019

| DAY | SUNRISE | SUNSET | 1 ST TIDE | 2 ND TIDE | 3 RD TIDE | 4 TH TIDE |
|------------|---------|---------|-----------------------------|------------------------------|------------------------------|-----------------------------|
| Sun, 12/1 | 7:35 am | 4:21 pm | 1:23 am, -1.0 ft, low tide | 9:00 am, 12.1 ft, high tide | 3:10 pm, 7.1 ft, low tide | 7:19 pm 8.7 ft, high tide |
| Mon, 12/2 | 7:36 am | 4:21 pm | 2:08 am, 0.0 ft, low tide | 9:47 am, 11.9 ft, high tide | 4:25 pm, 6.6 ft, low tide | 8:23 pm, 7.9 ft, high tide |
| Tue, 12/3 | 7:38 am | 4:20 pm | 2:57 am, 1.1 ft, low tide | 10:34 am, 11.6 ft, high tide | 5:38 pm, 5.9 ft, low tide | 9:41 pm, 7.4 ft, high tide |
| Wed, 12/4 | 7:39 am | 4:20 pm | 3:51 am, 2.3 ft, low tide | 11:19 am, 11.5 ft, high tide | 6:34 pm, 5.0 ft, low tide | 11:10 pm 7.2 ft, high tide |
| Thu, 12/5 | 7:40 am | 4:20 pm | n/a | 4:50 am, 3.4 ft, low tide | 12:01 pm, 11.4 ft, high tide | 7:16 pm, 4.0 ft, low tide |
| Fri, 12/6 | 7:41 am | 4:20 pm | 12:40 am, 7.5 ft, high tide | 5:54 am, 4.4 ft, low tide | 12:38 pm, 11.3 ft, high tide | 7:49 pm, 2.9 ft, low tide |
| Sat, 12/7 | 7:42 am | 4:19 pm | 2:00 am, 8.1 ft, high tide | 6:58 am, 5.2 ft, low tide | 1:12 pm, 11.3 ft, high tide | 8:18 pm, 1.9 ft, low tide |
| Sun, 12/8 | 7:43 am | 4:19 pm | 3:02 am, 9.0 ft, high tide | 7:56 am, 5.9 ft, low tide | 1:43 pm, 11.2 ft, high tide | 8:45 pm, 0.8 ft, low tide |
| Mon, 12/9 | 7:44 am | 4:19 pm | 3:51 am, 9.9 ft, high tide | 8:48 am, 6.5 ft, low tide | 2:14 pm, 11.2 ft, high tide | 9:14 pm, -0.1 ft, low tide |
| Tue, 12/10 | 7:45 am | 4:19 pm | 4:33 am, 10.6 ft, high tide | 9:34 am, 7.0 ft, low tide | 2:44 pm, 11.1 ft, high tide | 9:45 pm, -1.0 ft, low tide |
| Wed, 12/11 | 7:46 am | 4:19 pm | 5:11 am, 11.3 ft, high tide | 10:18 am, 7.4 ft, low tide | 3:15 pm, 11.1 ft, high tide | 10:20 pm, -1.7 ft, low tide |
| Thu, 12/12 | 7:47 am | 4:19 pm | 5:48 am, 11.8 ft, high tide | 11:02 am, 7.6 ft, low tide | 3:49 pm, 11.0 ft, high tide | 10:57 pm, -2.2 ft, low tide |
| Fri, 12/13 | 7:47 am | 4:19 pm | 6:26 am, 12.2 ft, high tide | 11:47 am, 7.7 ft, low tide | 4:27 pm, 10.9 ft, high tide | 11:38 pm, -2.5 ft, low tide |
| Sat, 12/14 | 7:48 am | 4:20 pm | n/a | 7:07 am, 12.4 ft, high tide | 12:34 pm, 7.7 ft, low tide | 5:09 pm, 10.6 ft, high tide |
| Sun, 12/15 | 7:49 am | 4:20 pm | 12:21 am, -2.4 ft, low tide | 7:50 am, 12.5 ft, high tide | 1:26 pm, 7.5 ft, low tide | 5:58 pm, 10.2 ft, high tide |
| Mon, 12/16 | 7:50 am | 4:20 pm | 1:08 am, -1.9 ft, low tide | 8:35 am, 12.6 ft, high tide | 2:24 pm, 7.1 ft, low tide | 6:56 pm, 9.6 ft, high tide |
| Tue, 12/17 | 7:50 am | 4:20 pm | 1:56 am, -1.1 ft, low tide | 9:21 am, 12.5 ft, high tide | 3:28 pm, 6.4 ft, low tide | 8:06 pm, 8.9 ft, high tide |
| Wed, 12/18 | 7:51 am | 4:21 pm | 2:48 am, 0.1 ft, low tide | 10:08 am, 12.5 ft, high tide | 4:36 pm, 5.4 ft, low tide | 9:29 pm, 8.3 ft, high tide |
| Thu, 12/19 | 7:52 am | 4:21 pm | 3:45 am, 1.5 ft, low tide | 10:55 am, 12.5 ft, high tide | 5:42 pm, 4.0 ft, low tide | 11:05 pm, 8.1 ft, high tide |
| Fri, 12/20 | 7:52 am | 4:21 pm | 4:49 am, 3.1 ft, low tide | 11:41 am, 12.4 ft, high tide | 6:40 pm, 2.5 ft, low tide | n/a |
| Sat, 12/21 | 7:53 am | 4:22 pm | 12:45 am, 8.4 ft, high tide | 6:00 am, 4.5 ft, low tide | 12:25 pm, 12.4 ft, high tide | 7:31 pm, 0.9 ft, low tide |
| Sun, 12/22 | 7:53 am | 4:23 pm | 2:16 am, 9.4 ft, high tide | 7:13 am, 5.7 ft, low tide | 1:08 pm, 12.3 ft, high tide | 8:17 pm, -0.4 ft, low tide |
| Mon, 12/23 | 7:54 am | 4:23 pm | 3:29 am, 10.4 ft, high tide | 8:22 am, 6.5 ft, low tide | 1:50 pm, 12.2 ft, high tide | 8:59 pm, -1.5 ft, low tide |
| Tue, 12/24 | 7:54 am | 4:24 pm | 4:26 am, 11.4 ft, high tide | 9:24 am, 7.1 ft, low tide | 2:31 pm, 11.9 ft, high tide | 9:39 pm, -2.1 ft, low tide |
| Wed, 12/25 | 7:54 am | 4:24 pm | 5:15 am, 12.1 ft, high tide | 10:21 am, 7.4 ft, low tide | 3:12 pm, 11.6 ft, high tide | 10:19 pm, -2.4 ft, low tide |
| Thu, 12/26 | 7:54 am | 4:25 pm | 5:57 am, 12.5 ft, high tide | 11:13 am, 7.5 ft, low tide | 3:54 pm, 11.2 ft, high tide | 10:58 pm, -2.3 ft, low tide |
| Fri, 12/27 | 7:55 am | 4:26 pm | 6:36 am, 12.6 ft, high tide | 12:02 pm, 7.4 ft, low tide | 4:36 pm, 10.7 ft, high tide | 11:37 pm, -2.0 ft, low tide |
| Sat, 12/28 | 7:55 am | 4:27 pm | n/a | 7:12 am, 12.6 ft, high tide | 12:50 pm, 7.3 ft, low tide | 5:21 pm, 10.2 ft, high tide |
| Sun, 12/29 | 7:55 am | 4:27 pm | 12:17 am, -1.4 ft, low tide | 7:47 am, 12.5 ft, high tide | 1:38 pm, 7.0 ft, low tide | 6:07 pm, 9.6 ft, high tide |
| Mon, 12/30 | 7:55 am | 4:28 pm | 12:57 am, -0.7 ft, low tide | 8:21 am, 12.3 ft, high tide | 2:27 pm, 6.6 ft, low tide | 6:58 pm, 9.0 ft, high tide |
| Tue, 12/31 | 7:55 am | 4:29 pm | 1:37 am, 0.3 ft, low tide | 8:57 am, 12.1 ft, high tide | 3:19 pm, 6.1 ft, low tide | n/a |