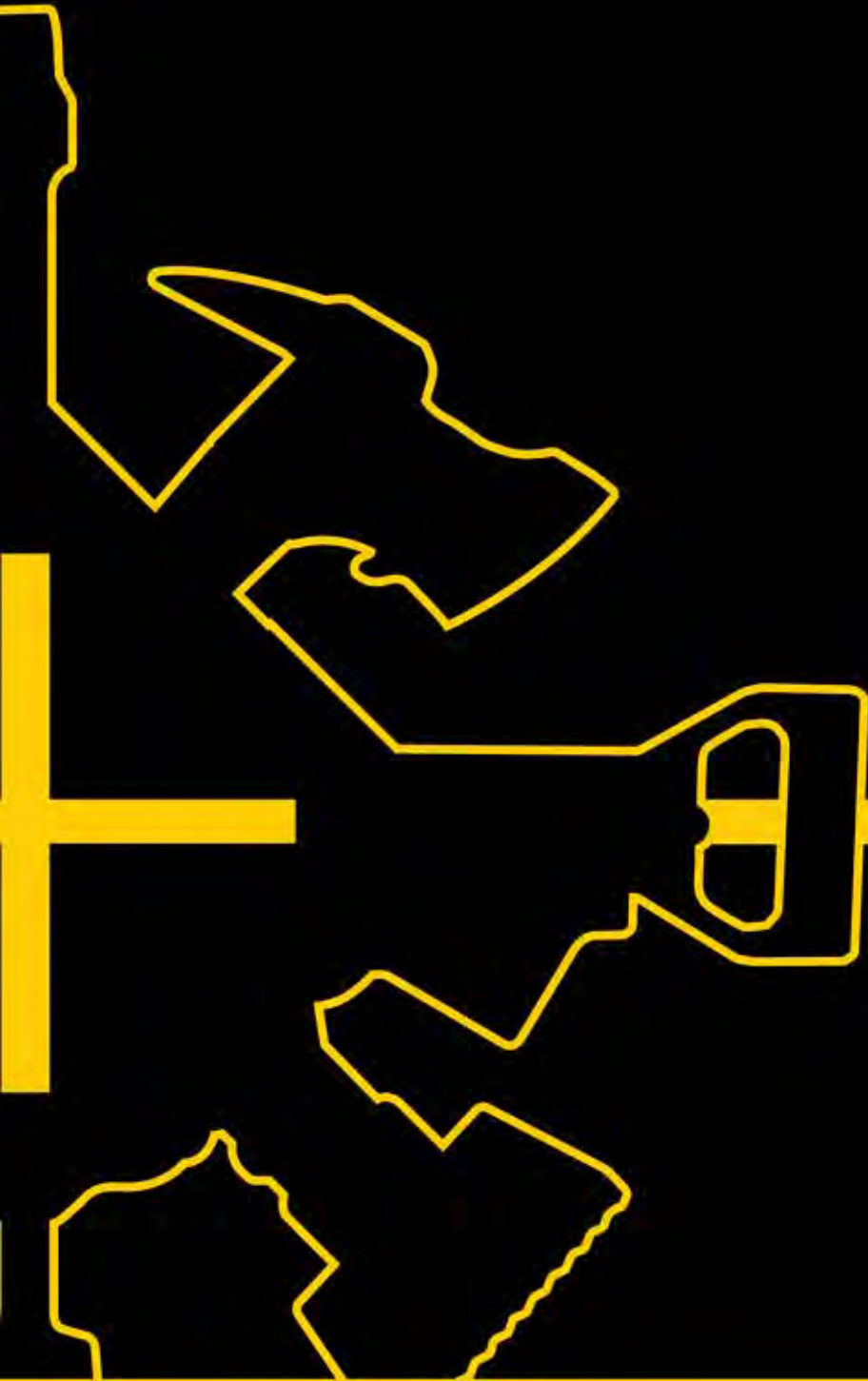


Product Catalog v.19



Lift | Shift | Contain | Stabilize | Penetrate

PARATECH®

Product Catalog v.19

Made in the USA and used worldwide.

PARATECH®

TIMELINE

- 
1962 WORLD'S FAMOUS PRY AXE INTRODUCED
- 
1965 THE HOOLIGAN TOOL, THE WORLD'S FIRST PRODUCTION "HALLIGAN" TYPE FORCIBLE TOOL IS INTRODUCED
- 
1976 MAXIFORCE® AIR LIFTING BAGS INTRODUCED TO THE UNITED STATES FIRE RESCUE SERVICE
- 
1979 PARATECH BECOMES THE FIRST U.S. MANUFACTURER OF A MOLDED, HIGH PRESSURE AIR LIFTING BAG
- 
1981 THE P-10 TRUCK MADE BY PARATECH FOR THE U.S.A. AIR FORCE STATIONED IN SOUTH KOREA
- 
1983 PARATECH INTRODUCES THE WORLD'S FIRST KEVLAR® REINFORCED AIR LIFTING BAGS UNDER ITS MAXIFORCE® TRADEMARK
- 
1984 PARATECH INTRODUCES THE AIRGUN 40 PNEUMATIC IMPACT TOOL
- 
1985 U.S. NAVY PURCHASES 500 AIRGUN 40S FOR SHIPBOARD FIREFIGHTING
- 
1992 RESCUE STRUTS, THE FIRST SELF-LOCKING COLLAPSE SUPPORT SYSTEMS IN THE WORLD ARE INTRODUCED
- 
1993 FIRST VEHICLE STABILIZATION (VSK) KIT CREATED
- 
1994 NORTHRIDGE, CA EARTHQUAKE: LOS ANGELES CITY & COUNTY RESCUE TEAMS USE MAXIFORCE® LIFTING BAGS, RESCUE STRUTS, PRT KITS AND PRY-AXES FOR RESCUE
- 
1995 KOBE, JAPAN EARTHQUAKE: MAXIFORCE® LIFTING BAGS, RESCUE STRUTS, PRT KITS AND PRY-AXES USED FOR RESCUE
- 
1998 PARATECH ACHIEVES ISO 9001 CERTIFICATION
- 
1999 ISTANBUL, TURKEY EARTHQUAKE: RESCUE STRUTS & MAXIFORCE® LIFTING BAGS BECOME A VITAL PART OF EARTHQUAKE PREPAREDNESS
- 
2000 LONGSHORE STRUTS DESIGNED & DEVELOPED FOR HIGH ANGLE COLLAPSE RESCUE
- 
2002 THE BUSTER TOOL IS DESIGNED TO MEET AND EXCEED FAA REGULATIONS FOR CRASH AXES
- 
2002 PARATECH EU IS ESTABLISHED IN DENMARK IN ORDER TO CREATE A STRONGER PRESENCE IN EUROPE
- 
2003 PARATECH RESCUE SUPPORT SYSTEMS ARE ADAPTED BY FEMA AS A STANDARD
- 
2004 UNITED KINGDOM STANDARDIZES ON PARATECH RESCUE STRUTS FOR THEIR COLLAPSE AND US&R OPERATIONS
- 
2005 THE SHORING HAMMER IS INTRODUCED AND USED THROUGHOUT NEW ORLEANS IN THE WAKE OF HURRICANE KATRINA
- 
2006 THE SMT™ (SPECIAL MISSION TENDER) IS INTRODUCED FOR QUICK AND EASY DEPLOYMENT AND PURCHASE OF PARATECH EQUIPMENT
- 
2007 THE WALER SYSTEM IS DEVELOPED
- 
2007 SINGAPORE CIVIL DEFENSE RESPONDS TO CHINA EARTHQUAKE WITH PARATECH EQUIPMENT
- 
2008 THE MULTI BASE IS DESIGNED FOR RESCUE SUPPORT SYSTEMS
- 
2009 PARATECH EQUIPMENT DEPLOYED TO L'AQUILA, ITALY EARTHQUAKE
- 
2010 PARATECH EQUIPMENT DEPLOYED TO HAITI EARTHQUAKE
- 
2010 THE STRONGEST 'ALL IN ONE' VEHICLE STABILIZER, THE TVS, (TWISTLOCK VEHICLE STABILIZER) IS INTRODUCED
- 
2012 ABSOLUTE RAKER—FIRST ALL MECHANICAL RAKER SHORE INTRODUCED
- 
2013 HYDRAULIC-FUSION-STRUT (HFS) PARATECH'S FIRST HYDRAULIC RESCUE STRUT UNVEILED
- 
2014 DAMAGE CONTROL SYSTEMS (DCS) PARATECH DCS INSTALLED ON SWEDISH NAVY SHIPS
- 
2014 PARATECH INTRODUCES MAXIFORCE® G2 AIR LIFTING BAGS
- 
2014 THE TITAN CRASH AXE IS CREATED BY PARATECH, WITH INPUT FROM THE AIR FORCE'S PARARESCUEMEN
- 
2015 THE MULTIFORCE® AIR LIFTING BAG IS INTRODUCED
- 
2016 THE VSK CONTROLLER IS INTRODUCED
- 
2016 MULTIFORCE POSITIONING LIGHTS ARE INTRODUCED
- 
2017 THE ACMETHREAD STRUT DRIVER RETRO FIT KIT IS INTRODUCED
- 
2018 PARATECH INTRODUCES THE ACMETHREAD STRUT DRIVER
- 
2019 THE G3 DEADMAN CONTROLLERS AND VENTED COUPLINGS ARE INTRODUCED

THE PARATECH RESCUE SUPPORT SYSTEM

The Paratech Rescue Support System is truly a “go anywhere” system. Designed to be effective for the simplest to the most demanding deployment, there isn’t a more comprehensive, scalable and straightforward system than Paratech’s. Whether you choose the precision of the AcmeThread Strut, the automatic locking collar of the LockStroke Strut or the added length of the LongShore Strut, they are strong and versatile enough for nearly every collapse and stabilization scenario.

The entire system includes 5 sizes of AcmeThread Struts, 4 sizes of LockStroke Struts, 3 sizes of HydraFusion Struts, 4 sizes of AcmeThread/LockStroke Extensions, 5 sizes of LongShore Struts, 4 LongShore Extensions and over 20 interchangeable base plates designed to support a wide variety of contact points. All aluminum alloy components of the Rescue Support System are hard coat anodized to reduce electrical conductivity and increase strength and durability.

Truly a system that will not stop growing, Paratech’s Rescue Support System can be used in excavation collapse (trenches, mines), vehicle stabilization, structural collapse and reinforcement, or wherever there is a need for quick, strong and safe vertical or horizontal shoring.

STRUCTURAL SHORING

Earthquakes, construction collapse, cave-ins, floods and structural fire damage require a collapse rescue system designed for the purpose of extracting victims in a safe and timely manner.

VEHICLE STABILIZATION

Paratech Vehicle Stabilization Kits have the strength and flexibility to handle any size vehicle anytime, anywhere. This includes sub compact cars, buses, cement trucks and even locomotives. Additionally, these components provide the extra value of being completely interchangeable with your other Paratech equipment for building collapse and trench rescue scenarios.





TRENCH

TRENCH SHORING

Paratech's pneumatic Rescue Struts allow for remote placement and easy locking as well as safe, remote removal. Used in combination with our Waler System, trench rescue has never been faster, easier or safer.



TRENCH & WALER



CHANNEL BASE

SPECIAL APPLICATIONS

To be used in combination with Paratech's LongShore, AcmeThread and LockStroke Struts, a wide variety of bases and accessories are available to assist in numerous special application scenarios. These include, but in no way are limited to: elevator shaft access and victim retrieval, high angle applications, confined space work and trench rescue. Add-on kits include: Tripod, Bipod, Monopod and Elevator Support Unit Kits.



VEHICLE STABILIZATION



TRAIN STABILIZATION



MONOPOD PULLEY KIT

RSS COMPARISONS	AcmeThread	LockStroke	LongShore	HydraFusion
SIZES	5	4	5	3
LENGTHS	12 – 88 in (31–224 cm)	19 – 89 in (48–226 cm)	26–198 in (66–503 cm)	8.2–51.1 (46.2–121.2 cm)
EXTENSIONS	4	4	4	AcmeThread & LongShore
EXTENSION LENGTHS	6–36 in (15–91 cm)	6–36 in (15–91 cm)	12–67 in (30.5–170 cm)	6–67 in (15–170 cm)
AUTO LOCKING COLLAR	NO	YES	NO	NO
FINE ADJUSTMENT	YES	YES with attachment	YES	YES
REMOTE PLACEMENT	YES	YES	YES	YES
TRENCH STABILIZATION	YES	YES	YES	YES
COLLAPSE STABILIZATION	YES	YES	YES	YES
VEHICLE STABILIZATION	YES	YES	YES	YES

ACMETHREAD STRUT

The Paratech **AcmeThread** Struts are comprised of a 2½” diameter Acme threaded aluminum movable solid shaft that extends out of a 3” diameter aluminum tube. The AcmeThread is a square thread that allows full surface contact of the shaft through the collar and the collar full surface contact on the tube to transfer load directly to ground. AcmeThread Struts can be extended manually or pneumatically with air, carbon dioxide or nitrogen.

Place strut into position, ‘EXTEND’ threaded shaft into desired length, ‘SPIN’ collar to ‘LOCK’ the strut. It is as easy as... ‘EXTEND & SPIN TO LOCK’

Adjustments to the threaded shaft can be made in ANY increment up to the maximum length of the strut.

LOCKSTROKE STRUT

The Paratech **LockStroke** Struts are comprised of a 2½” diameter grooved solid aluminum movable shaft that extends out of a 3” diameter aluminum tube. LockStroke Struts have a ball bearing filled collar that locks automatically when the shaft extends either manually or pneumatically with air, carbon dioxide or nitrogen.

‘SET’ strut into position, ‘EXTEND’ strut with air or manually and the strut ‘LOCKS’ automatically. It is as easy as...‘SET, EXTEND TO LOCK’



OVER 20 INTERCHANGEABLE BASES

ALL ALUMINUM ALLOY COMPONENTS OF THE RESCUE SUPPORT SYSTEM ARE HARD COAT ANODIZED TO INCREASE STRENGTH AND DURABILITY

MACHINE KNURLED NON-SLIP LOCKING COLLAR
ACMETHREAD-LONGSHORE-HYDRAFUSION

THE STRONGEST & MOST VERSATILE STRUTS IN THE WORLD

Paratech AcmeThread & LockStroke Load Table

Working Load Chart At The Following Safety Factors

LENGTH	2:1 lb.	kg.	3:1 lb.	kg.	4:1 lb.	kg.
2 ft (0.6m)	43,500	19,731	29,000	13,154	21,750	9,866
4 ft (1.2m)	40,000	18,144	26,667	12,096	20,000	9,072
6 ft (1.8m)	28,250	12,814	18,830	8,541	14,125	6,407
8 ft (2.4m)	24,050	10,909	16,030	7,271	12,025	5,455
10 ft (3.0m)	10,725	4,865	7,150	3,243	5,360	2,431
12 ft (3.6m)	7,660	3,475	5,000	2,313	3,830	1,737

5 YEAR WARRANTY

The data in this table has been confirmed by physical testing, witnessed and certified by an independent, licensed structural engineering company.





LONGSHORE STRUT

The Paratech LongShore Struts are comprised of a 3" diameter threaded aluminum movable shaft that extends out of a 3½" diameter aluminum tube. The square thread allows full surface contact of the shaft through the collar and the collar full surface contact on the tube to transfer load directly to ground. LongShore Struts can be extended manually or pneumatically with air, carbon dioxide or nitrogen.

Place strut into position, 'EXTEND' threaded shaft into desired length, 'SPIN' collar to 'LOCK' the strut. It is as easy as... 'EXTEND & SPIN TO LOCK'

Adjustments to the threaded shaft can be made in ANY increment up to the maximum length of the strut.



HYDRAFUSION STRUT

The Paratech HydraFusion Struts (AcmeThread) are comprised of a 3" diameter threaded aluminum shaft that extends hydraulically out of a 3 1/2" diameter aluminum tube. The hydraulic lift capacity is 10 U.S. tons with a 2:1 safety factor. Once the strut is extended, the AcmeThread collar is spun down to the locked position and creates a 20,000 lbs. 4:1 safety factor for stabilization.

Place strut into position, 'EXTEND' threaded shaft into desired length, 'SPIN' collar to 'LOCK' the strut.

It is as easy as... 'EXTEND & SPIN TO LOCK'

Adjustments to the threaded shaft can be made in ANY increment up to the maximum length of the strut.



LONGSHORE STRUTS ARE STRONGER AND LONGER FOR YOUR HEAVIEST AND HIGHEST SUPPORT SITUATIONS

Paratech LongShore Load Table

Working Load Chart At The Following Safety Factors

LENGTH	2:1 lb.	kg.	3:1 lb.	kg.	4:1 lb.	kg.
6 ft (1.8m)	44,000	19,958	29,333	13,305	22,000	9,980
7 ft (2.1m)	44,000	19,958	29,333	13,305	22,000	9,980
8 ft (2.4m)	40,000	18,144	26,666	12,095	20,000	9,072
9 ft (2.7m)	32,000	14,515	21,333	9,676	16,000	7,257
10 ft (3.0m)	24,000	10,886	16,000	7,257	12,000	5,443
11 ft (3.3m)	22,000	9,979	14,667	6,653	11,000	4,990
12 ft (3.6m)	20,000	9,072	13,333	6,047	10,000	4,536
13 ft (3.9m)	14,000	6,350	9,332	4,233	7,000	3,175
14 ft (4.2m)	12,000	5,443	8,000	3,629	6,000	2,722
15 ft (4.5m)	9,000	4,082	6,000	2,722	4,500	2,041
16 ft (4.8m)	6,000	2,722	4,000	1,814	3,000	1,361

5 YEAR WARRANTY

The data in this table has been confirmed by physical testing, witnessed and certified by an independent, licensed structural engineering company.

HYDRAFUSION STRUTS

The Paratech HydraFusion Struts offer end users the ability to lift up to 10 U.S. Tons with a safety factor of 2:1 and to stabilize up to 20,000 lbs. with a safety factor of 4:1. The innovative, built in Dual Shaft End Adapter (patent pending) allows users to safely use Paratech LongShore, LockStroke or AcmeThread Struts and Extensions in conjunction with the incredible lifting ability of the HydraFusion Strut.



HYDRAFUSION STRUT KITS

All lift 10 tons (9.0 t) with a 2:1 safety factor.
All shore 20,000 lbs. (9.0 t) with a 4:1 safety factor



HYDRAFUSION STRUT 04 KIT

Net Weight: 42.2 lb 19.2 kg
Part No. 22-79HA04K



HYDRAFUSION STRUT 16 KIT

Net Weight: 60.7 lb 27.6 kg
Part No. 22-79HA16K



HYDRAFUSION STRUT 10 KIT

Net Weight: 51.8 lb 23.5 kg
Part No. 22-79HA10K

HYDRAFUSION PUMP WITH GAUGE



WITH GAUGE AND HOSE ONLY

Net Weight: 23.2 lb 10.5 kg
Part No. 22-790020G

No-spill, flat-face hydraulic couplings with a non-conductive 10 ft (3 m) kink-resistant hose. Two speed, single acting, lightweight, 10,000 psi (690 bar), metal hydraulic pump.

HYDRAFUSION HOSE EXTENTION



Net Weight: 2.2 lb 1.0 kg
Part No. 22-790030X

HYDRAFUSION STRUTS ACCESSORIES



STRUT CONVERTER

Use a Strut Converter to attach a base to the top end of a HydraFusion Strut

Net Weight: 2.7lb 1.2kg
Part No. 22-796035



HYDRAFUSION LONGSHORE SCREW ADAPTER

Net Weight: 6.1lb 2.7kg
Part No. 22-790019



HYDRAFUSION ACMETHREAD SCREW ADAPTER

Net Weight: 6.5lb 2.9kg
Part No. 22-790067

Part No.	Description	LIFT HEIGHTS		NET WEIGHT		SHIP WEIGHT	
		in	cm	lb	kg	lb	kg
22-79HA04	HydraFusion Strut 04	18.2	46.2	18.7	8.5	19.7	8.9
22-79HA10	HydraFusion Strut 10	25.2	64.0	28.3	12.8	29.3	13.3
22-79HA16	HydraFusion Strut 16	32.0	81.3	37.2	16.9	38.2	17.3
22-79HA04K	HydraFusion Strut 04 Kit	4	10.2	42.2	19.2	43.4	19.6
22-79HA10K	HydraFusion Strut 10 Kit	10	25.4	51.8	23.5	52.8	23.9
22-79HA16K	HydraFusion Strut 16 Kit	15.9	40.4	60.7	27.6	61.7	27.9
22-790020G	HydraFusion Pump with Gauge	N/A	N/A	23.2	10.5	24.5	11.1
22-790019	Hydradfusion LongShore Screw Adapter	N/A	N/A	6.1	2.7	7.5	3.4
22-790067	Hydradfusion AcmeThread Screw Adapter	N/A	N/A	6.5	2.9	8.1	3.6
22-796035	Strut Converter	N/A	N/A	2.7	1.2	3.1	1.4



PARATECH

RESCUE SUPPORT SYSTEMS

ACMETHREAD STRUT DRIVER

LIFT LIKE NO OTHER!

**PARATECH ACMETHREAD STRUT DRIVER..
EASY TO USE, QUICK TO DEPLOY.
STRONG AND SAFE.**



ACMETHREAD STRUT DRIVER

Medium duty strut lifting device integrated into our extremely strong and versatile AcmeThread Rescue Strut. Safe, Easy, Fast Lifting. 6,000 lbs (2,721 kg) lifting capacity. Limitless Functionality; Vehicle stabilization, Structural collapse scenarios, trench shoring, soft placement ability. Made from aircraft grade aluminum housings, alloy steel gears and hardened ball bearings, making lifting smooth and easy. Contoured gear box designed to resist dragging during vehicle lifts. Directional safety mechanism to insure strut will only travel in the direction it indicates. Available in two AcmeThread strut sizes.

**AcmeThread Strut Driver: 25-36 in / 64-91 cm (22.6 lbs / 10.2 kg)
Part No. 22-796200SD**

**AcmeThread Strut Driver: 37-58 in / 94-147 cm (29.6 lbs / 13.4 kg)
Part No. 22-796202SD**

Hex Ratchet Handle: 22-797727 2.85 lbs / 1.3 kg



ACMETHREAD STRUT DRIVER RETRO FIT KIT

Can be attached to any of your existing AcmeThread struts to utilize all the same functionalities of the AcmeThread Strut Driver. This kit includes a removable gearbox and tube end adapter. Can be fully installed and still manually adjusted. An additional tube end adapter is necessary if using strut extensions. Accessories to this kit include the 3/4" (19mm) Hex Wrench and strut Carrying Handle.

- Kit with Handle: 22-79SDRFH 17.2 lbs / 7.8 kg**
- Kit without Handle: 22-79SDRF 14.4 lbs / 6.5 kg**
- Hex Ratchet Handle: 22-797727 2.8 lbs / 1.3 kg**
- Carrying Handle: 22-797042E 2.4 lbs / 1.1 kg**



ACMETHREAD STRUTS

AcmeThread Struts offer the end-user the ability to extend manually or pneumatically with air, carbon dioxide or nitrogen, utilizing the recessed nipple fitted to the aluminum tube. The 12-15 inch strut is the ONLY non-pneumatic strut. AcmeThread Struts always default to the locked position.



Part No.	Description	Net Weight: lb	kg	Ship Weight: lb	kg
22-796212	AcmeThread Strut 12-15 in / 31-38 cm	6.6	3.0	7.1	3.2
22-796206	AcmeThread Strut 19-25 in / 48-64 cm	11.2	5.1	11.7	5.3
22-796200	AcmeThread Strut 25-36 in / 64-91 cm	14.9	6.8	15.4	6.9
22-796202	AcmeThread Strut 37-58 in / 94-147 cm	22.4	10.2	22.9	10.4
22-796204	AcmeThread Strut 56-88 in / 142-224 cm	32.6	14.8	33.1	15.0

LOCKSTROKE STRUTS

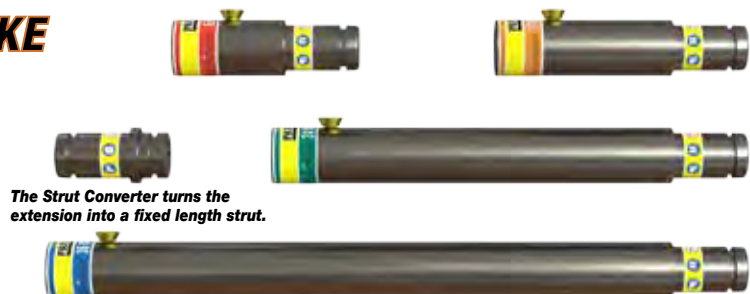
LockStroke Struts feature an innovative automatic locking collar. Activated either manually or pneumatically with air, carbon dioxide or nitrogen, LockStroke Struts always default to the locked position.



Part No.	Description	Net Weight: lb	kg	Ship Weight: lb	kg
22-796006	LockStroke Strut 19-25 in / 48-64 cm	12.7	5.8	13.2	5.9
22-796000	LockStroke Strut 25-36 in / 64-91 cm	16.5	7.5	17.0	7.7
22-796002	LockStroke Strut 36-58 in / 94-147 cm	24.0	10.9	24.5	11.1
22-796004	LockStroke Strut 55-88 in / 142-224 cm	35.7	16.2	36.2	16.4

ACMETHREAD & LOCKSTROKE STRUT EXTENSIONS

Paratech offers four sizes of extensions 6, 12, 24 and 36 inches, which can be used with the AcmeThread & LockStroke Struts. Extensions are attached to the strut on the solid end.



Part No.	Description	Net Weight: lb	kg	Ship Weight: lb	kg
22-796035	Strut Converter	2.7	1.2	3.1	1.4
22-796017	Strut Extension 6 in / 15 cm	3.8	1.7	4.2	1.9
22-796012	Strut Extension 12 in / 30 cm	4.6	2.1	5.0	2.3
22-796024	Strut Extension 24 in / 61 cm	7.1	3.2	8.0	3.6
22-796036	Strut Extension 36 in / 91 cm	9.7	4.4	11.0	5.0

For all lengths displayed above. CLOSED position: inches rounded up - decimals not shown. OPEN position: inches rounded down - decimals not shown.



LONGSHORE STRUTS

LongShore Struts offer end-users the ability to extend manually or pneumatically with air, carbon dioxide or nitrogen, utilizing the recessed nipple fitted to the aluminum tube. LongShore Struts always default to the locked position.



Part No.	Description	Net Weight: lb	kg	Ship Weight: lb	kg
22-796710	LongShore Strut 203 26-36 in / 66-91 cm	16.0	7.3	17.0	7.7
22-796720	LongShore Strut 304 36-50 in / 91-127 cm	22.0	10.0	23.0	10.5
22-796730	LongShore Strut 406 48-73 in / 122-185 cm	28.0	12.7	29.0	13.2
22-796360	LongShore Strut 610 72-116 in / 183-295 cm	41.0	18.6	42.0	19.1
22-796390	LongShore Strut 1016 114-198 in / 290-503 cm	65.0	29.5	66.0	29.9

LONGSHORE STRUTS EXTENSIONS

Paratech offers four sizes of LongShore Extensions 12, 24, 48 and 67 inches. Extensions are attached to the strut on the solid end.



Part No.	Description	Net Weight: lb	kg	Ship Weight: lb	kg
22-796037	LongShore Converter	2.5	1.1	2.6	1.2
22-796341	LongShore Extension 135 12 in / 30.5 cm	6.2	2.8	7.2	3.3
22-796342	LongShore Extension 235 24 in / 61 cm	9.2	4.2	10.2	4.6
22-796356	LongShore Extension 435 48 in / 122 cm	15.0	6.8	16.0	7.3
22-796376	LongShore Extension 635 67 in / 170 cm	20.0	9.1	21.0	9.5

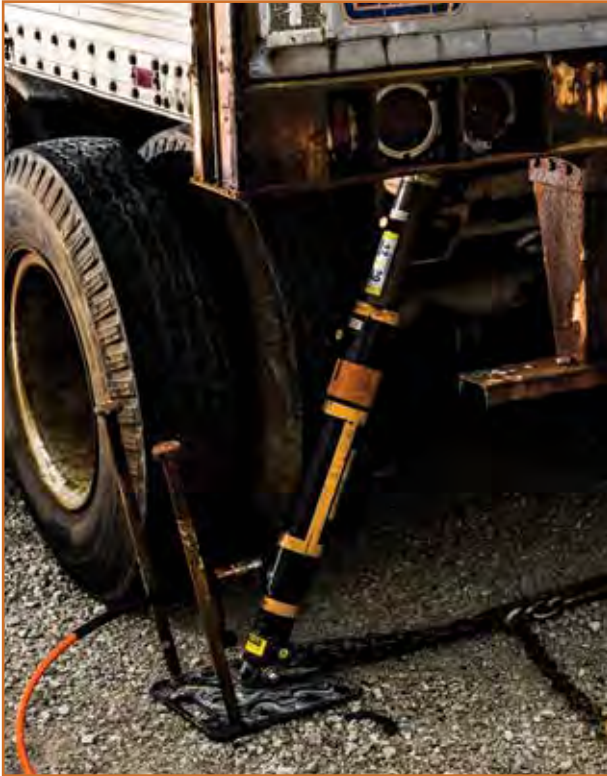
LONGSHORE ADJUSTABLE BRACE

The B23 and B57 are manually adjusted by twisting the inner threaded shaft to increase or decrease the length of the brace. Utilized in Paratech's Flying Raker Kit (B23) and Midpoint Brace Kit (B57). Utilized to support in both compression as well as tension applied forces.



Part No.	Description	Net Weight: lb	kg	Ship Weight: lb	kg
22-796348	LongShore Adjustable Brace B23 26-36 in / 66-91 cm	15.0	6.8	16.0	7.3
22-796350	LongShore Adjustable Brace B57 60-85 in / 152-216 cm	32.7	14.5	33.7	15.3

For all lengths displayed above. CLOSED position: inches rounded up - decimals not shown. OPEN position: inches rounded down - decimals not shown.



BASES & END PLATES

Designed to be the strut's contact point, Paratech's wide assortment of aluminum alloy bases and end Plates offer unparalleled versatility in the widest range of collapse support situations.



ADJUSTABLE THREADED CONNECTOR

For LockStroke Strut

Net Weight: 2.2lb 1.0kg
Part No. 22-796160



SPRING LOADED CONNECTOR

For LockStroke Strut

Net Weight: 2.2lb 1.0kg
Part No. 22-796170

FOR USE WITH:

AcmeThread

LockStroke

LongShore

HydraFusion



COLUMN BASE

The column base can be used with 3 struts to create a column spot shore
16" x 16" / 40.6cm x 40.6cm
Net Weight: 18.2lb 8.3kg
Part No. 22-796680



V BASE

The V Base has a 90° V that will fit onto any right angle. Features 2 nailing holes should it need to be nailed to a piece of wood used in other applications
Net Weight: 1.4lb 0.6kg
Part No. 22-796090



HINGED BASE PLATE 12 with ANCHOR RING 12 IN / 30.5 CM

45° hinged base with eight 1 in / 2.5 cm picket holes
Net Weight: 12.0lb 5.4kg
Part No. 22-796180C



SWIVEL BASE 12 12 IN / 30.5 CM

20° swivel base with eight 1 in / 2.5 cm picket holes

Net Weight: 9.3lb 4.2kg
Part No. 22-796180B



RIGID BASE 12 12 IN / 30.5 CM

Net Weight: 8.6lb 3.9kg
Part No. 22-796180A



HINGED BASE 6 6 IN / 15.2 CM

45° hinged base

Net Weight: 3.8lb 1.7kg
Part No. 22-796140



HINGED BASE WITH ANCHOR RING 6 IN / 15.2 CM

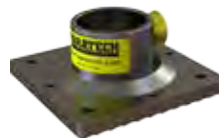
45° hinged base
Net Weight: 4.5lb 2.0kg
Part No. 22-796150



SWIVEL BASE 6 6 IN / 15.2 CM

20° swivel base

Net Weight: 3.3lb 1.5kg
Part No. 22-796060



RIGID BASE 6 6 IN / 15.2 CM

Net Weight: 2.8lb 1.3kg
Part No. 22-796070



CHANNEL BASE US: 6 IN x 6 IN / 15.2 CM x 15.2 CM

Part No. 22-796136

CHANNEL BASE METRIC: 6.3 IN x 7 IN / 16 CM x 17.8 CM

Part No. 22-796133

Used for structural collapse to support beams
Net Weight: 2.5lb 1.1kg



CHANNEL BASE US: 4 IN x 6 IN / 10.2 CM x 10.2 CM

Part No. 22-796134

CHANNEL BASE METRIC: 4.3 IN x 6 IN / 10.9 CM x 15.2 CM

Part No. 22-796131

Used for structural collapse to support beams
Net Weight: 2.0lb 0.9kg



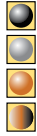
MULTI CHAIN BASE

Takes 3/8" (9.5mm) and 1/2" (12.7mm)

*Including square chains

Net Weight: 3.16lb 1.64kg

Part No. 22-796685



MULTI BASE

Can be used as a V Base, Cone Base, Wedge Base and will accept a 3/8" chain

Net Weight: 2.0lb 0.9kg

Part No. 22-796025



CONVEX MULTI BASE

Multi-purpose vehicle stabilization with Chain Wedge for 3/8" chain, V and cone feature

Net Weight: 3.2lb 1.4kg

Part No. 22-796269



SPIKE BASE

The Spike Base has replaceable stainless steel spikes that will dig into sheet metal and a V and cone feature for Veh. Stabilization

Net Weight: 1.2lb 0.5kg

Part No. 22-797687

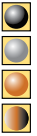


CONTOUR BASE

Contoured to grip surfaces dealing in vehicle stabilization kits

Net Weight: 1.7lb 0.8kg

Part No. 22-796270



MONOPOD HEAD / PULLEY

MonoPod Head / Pulley is designed for blind shaft elevator rescue, trench and high angle rescues

Net Weight: 7lb 3.2kg

Part No. 22-796540



MONOPOD / PULLEY ANGLE BASE

Designed originally for the MonoPod kit to be used in blind shaft elevator rescue but can be used in other locations

Net Weight: 7lb 3.2kg

Part No. 22-796590



MONOPOD / PULLEY ROOF PLATE

MonoPod / Pulley Roof Plate for use in conjunction with the MonoPod Head / Pulley

24" x 12" / 61cm x 30.5cm

Net Weight: 14lb 6.4kg

Part No. 22-796570



HITCH BASE

Can be utilized by putting into a 2" hitch receiver and in conjunction with the MonoPod kit so you can have a high point anchor off of your vehicle

Net Weight: 13.4lb 6.1kg

Part No. 22-796575



ANGLE BASE

The angle base can be used just like the 4x4 or 6x6 bases. Designed for use when you cannot make full contact around the header or sole plate.

Net Weight: 1.6lb 0.7kg

Part No. 22-796092



BIPOD HEAD

The BiPod Head is to be used in conjunction with the (2) biPod base Plates to create the BiPod

Net Weight: 33 lb 15 kg

Part No. 22-796820



BIPOD BASE

The BiPod Base Plate is a 12 in / 30.5 cm base plate designed with the full articulating cup

Net Weight: 11.1lb 5.0kg

Part No. 22-796180E



CLAMP & CLEVIS

Designed for use with the Flying Raker and Midpoint brace kit in conjunction with the Raker Kits

Net Weight: 5.0lb 2.3kg

Part No. 22-796330

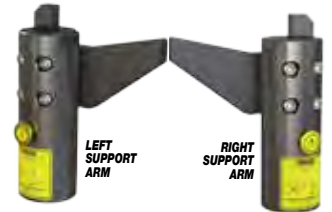


ANGLED RUBBER BASE

Angled rubber base used in conjunction with the elevator support arms lock elevator in position during rescues

Net Weight: 1.7lb 0.8kg

Part No. 22-796266



ELEVATOR SUPPORT ARMS

Left and Right Elevator Support Arms used in conjunction with angled rubber base to lock elevator in position during rescues

Net Weight: 8.5lb 3.9kg

Part No. 22-796260L or

Part No. 22-796260R



TRIPOD HEAD

To be used in conjunction with either AcmeThread or LongShore struts to create a tripod

Net Weight: 9.0lb 4.1kg

Part No. 22-796010



VSK BASE 6

6 in / 15.2 cm base integrated with ratchet belt and anchor ring making vehicle stabilization quicker & easier

Net Weight: 18.5lb 8.4kg

Part No. 22-796331



VSK BASE 12

12 in / 30.5 cm base integrated ratchet belt and anchor ring making vehicle stabilization quicker & easier

Net Weight: 23.5lb 10.6kg

Part No. 22-796308





WALER RAILS



Part No.	Description	Net Weight: lb	kg	Ship Weight: lb	kg
22-796295	Spot Shore Rail 18 in / 45.7 cm	11.2	5.1	13.2	6.0
22-796281	Waler Rail 6 ft / 1.8 m	42.8	19.4	44.8	20.3
22-796283	Waler Rail 8 ft / 2.4 m	58.7	26.6	60.7	27.5

WALER SYSTEM

Part No.	Description	Quantity	Part No.	Description	Quantity
22-796281	Waler Rail 6 ft / 1.8 m	4	22-796285	Stop Block	16
22-796283	Waler Rail 8 ft / 2.4 m	4	22-796287	Waler Connector	4

Part No.	Net Weight: lb	kg	Ship Weight: lb	kg
22-796282	501.6	227.6	529.6	240.2

WALER ACCESSORIES

INSIDE MECHANICAL THRUST BLOCK

Net Weight: 10.4lb 4.7kg
Part No. 22-796401



OUTSIDE MECHANICAL THRUST BLOCK

Net Weight: 21.6lb 9.8kg
Part No. 22-796411



L-TRENCH ADAPTER SET

Net Weight: 8.4lb 3.8kg
Part No. 22-796425



WALER CONNECTOR

Net Weight: 19.9lb 9.0kg
Part No. 22-796287



WALER STOP BLOCK

Net Weight: 1.0lb 0.5kg
Part No. 22-796285





LONGSHORE RAKER RAILS



Part No.	Description	Net Weight: lb	kg	Ship Weight: lb	kg
22-796258A	Raker Rail 2 24 in / 61 cm	7.0	3.2	8.0	3.6
22-796258B	Raker Rail 4 48 in / 122 cm	13.7	6.2	14.7	6.7
22-796258C	Raker Rail 6 72 in / 183 cm	20.7	9.4	21.7	9.8
22-796258D	Raker Rail 8 96 in / 244 cm	28.0	12.7	29.0	13.2

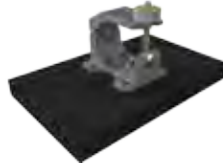
RAKER ACCESSORIES



RAKER RAIL SPLICE
Net Weight: 7.5lb 3.4kg
Part No. 22-796469



45 DEGREE BASE
Net Weight: 13.5lb 6.1kg
Part No. 22-796690



NAILING PAD WITH CLAMP
Net Weight: 9.9lb 4.5kg
Part No. 22-796310



RAKER ANGLE BASE
Net Weight: 5.6lb 2.5kg
Part No. 22-796475



RAIL LATCH HOLDER
Net Weight: 4.2lb 1.9kg
Part No. 22-796656



RAKER RAIL LATCH
Net Weight: 3.2lb 1.5kg
Part No. 22-796250



RAKER JUNCTION BASE
Net Weight: 7.3lb 3.3kg
Part No. 22-796290



RAIL JUNCTION
Net Weight: 9.7lb 4.4kg
Part No. 22-796280



STRUT DISTRIBUTOR MODULE
Net Weight: 0.5lb 0.2kg
Part No. 22-796395



For use with single or dual controller.
Can connect up to 5 modules to
shoot 6 struts at one time.

AIR SUPPLY COMPONENTS



**SINGLE STRUT
CONTROLLER G3**
250 PSI / 17.2 BAR
Net Weight: 2.9lb 1.3kg
Part No. 22-79610063



**DUAL DEADMAN
STRUT CONTROLLER G3**
250 PSI / 17.2 BAR
Net Weight: 3.1lb 1.6kg
Part No. 22-79610363



**STRUT/AIRGUN
REGULATOR**
5,500-0 PSI / 379.2-0 BAR
Part No. 22-895400G2 US
Net Weight: 3.8lb 1.7kg
Part No. 22-895400G2 METRIC
Net Weight: 3.9lb 1.8kg



**SINGLE TRENCH
CUSHION CONTROLLER**
7.25 PSI / 0.5 BAR
Net Weight: 5.0lb 2.3kg
Part No. 22-887310



VSK 2 CONTROLLER
29 PSI / 1.9 BAR
Net Weight: 2.4lb 1.0kg
Part No. 22-796V02

AIR HOSES



3/8 IN / 9.5 mm diameter
x 16 ft / 5 m (2.5 lb / 1.1 kg)
x 32 ft / 10 m (4.5 lb / 2.0 kg)
x 50 ft / 15 m (7.0 lb / 3.2 kg)

RED	YELLOW	GRAY	BLUE	BLACK	GREEN
22-890516	22-890515	22-890518	22-890514	22-890513	22-890517
22-890521	22-890520	22-890525	22-890523	22-890522	22-890524
22-890541	22-890542	22-890545	22-890543	22-890546	22-890544

1 IN / 25.4 mm diameter
x 20 ft / 6.1 m (11.0 lb / 5.0 kg)

RED	BLUE
22-887400	22-887401

TRENCH CONTROL KIT

Everything needed to address a trench rescue scenario. Deploy up to four struts at a time with the Strut Distributor Module and Dual Deadman Strut Controller

Part No.	Net Weight:	lb	kg
22-796TCK US 22-796TCKD METRIC		53.4	34.2

Quantity	Part No.	Description
1	22-796103G3	Dual Deadman Strut Controller
1	22-895400G2	Regulator G2
6	22-796395	Strut Distributor Module
1	22-890513	Air Hose, Black 16ft / 5m
2	22-890520	Air Hose, Yellow 32ft / 10m
2	22-890521	Air Hose, Red 32ft / 10m
1	22-890522	Air Hose, Black 32ft / 10m
1	22-890523	Air Hose, Blue 32ft / 10m
1	22-890524	Air Hose, Green 32ft / 10m
1	22-890525	Air Hose, Gray 32ft / 10m
1	22-796TCC	Carrying Case with Insert, Strut



RESCUE SUPPORT SYSTEM ACCESSORIES



WORKING AIR CART

Net Weight: 110lb 50kg
Part No. 22-800200 US
Part No. 22-800200D METRIC

WORKING AIR CART WITHOUT CYLINDERS

Net Weight: 43.4lb 19.7kg
Part No. 22-800201 US
Part No. 22-800201D METRIC



CHAIN 20 FT / 6.1 M x 3/8 IN, GRADE 100

Net Weight: 33.5lb 15.2kg
Part No. 22-796C1H



RATCHET BELT WITH FINGER HOOK 27 FT / 8.2 M

Capacity: 3,300 lb / 1,497 kg working
10,000 lb / 4,536 kg breaking
Net Weight: 5.9lb 2.7kg
Part No. 22-890553



TIE DOWN KEYS WITH J HOOK

Net Weight: 5.0lb 2.3kg
Part No. 22-796161

Utilized with all VSK's.
Gives ability to attach ratchet belt to almost any vehicle on the road.



ADVANCED TY STRUT RELEASE TOOL

The new patent pending Ty Strut Release Tool is designed to be used to place Paratech struts into a trench or hard to reach places and to tighten or loosen struts.

Net Weight: 2.2lb 1.0kg

Part No. 22-796845



BASIC TY STRUT RELEASE TOOL

Ty Strut Release Tool without LockStroke Release Mechanism

Net Weight: 1.44lb .65kg

Part No. 22-796840



LOCKSTROKE RELEASE MECHANISM ONLY

Net Weight: .71lb .32kg

Part No. 22-796847



TRENCH CUSHION 18 IN / 45.7 CM

LIFT: 3.3 US TON / 3.0 METRIC TON
Low pressure square cushions that can fill up to an 18 in (46 cm) void.

Net Weight: 28.0lb 12.7kg



CLIP 3.0 / 7.6 CM

(for AcmeThread & LockStroke Struts)

Net Weight: 0.6lb 0.3kg

Part No. 22-796182A

CLIP 3.5 / 8.9 CM

(for LongShore Struts)

Net Weight: 0.8lb 0.8kg

Part No. 22-796185A



DOUBLE HEADED PICKET

1 in / 2.5 cm x 40 in / 101.6 cm

STL Picket Double Headed

Net Weight: 9.5lb 4.3kg

Part No. 22-796P14



MANUAL COMPRESSOR

(2 Stage)

18.5 x 7.6 x 5.0 IN

47.0 x 19.3 x 12.7 CM

Net Weight: 14.7lb 6.7kg



SHORING HAMMER

The multi-functional shoring hammer

Net Weight: 2.9lb 1.3kg

Part No. 22-796430



NON-SLIP NEOPRENE PAD

15 x 15 x 1 IN

38.1 x 38.1 x 2.5 CM

Net Weight: 12.0lb 5.4kg

Part No. 22-890015



LOAD INDICATOR

Net Weight: 6.5lb 3.0kg

Part No. 22-796550 us - 20K lb

Part No. 22-796550M METRIC - 10K kg



RSS CARRYING HANDLE

For use with both AcmeThread and LockStroke Struts and the AcmeThread Strut Driver

Net Weight: 2.4lb 1.1kg

Part No. 22-797042E



RSS CARRYING STRAP

For use with all Paratech Rescue Struts

Net Weight: 0.6lb 0.2kg

Part No. 22-790060



MONOPOD/PULLEY KIT

The Monopod Head & Pulley attach to the 610 LongShore Strut and can be used in applications such as high angle, elevator shaft, confined space and trench rescue. The kit includes the Monopod Head & Pulley, Tri-Anchor Ring, Angle Base, Roof Plate and also includes a black ballistic nylon carrying case.

Product Features:

- Pulley assembly allows the rope to come down the outside of the tube for ease of hoisting (5,000 lb / 2,268 kg capacity)
- 1,000 lb / 454 kg load capacity per hoist ring (4)
- Can be used with a life safety rope of up to 0.5 inch / 1.3 cm
- Monopod Head & Pulley Assembly is constructed of lightweight aluminum and stainless steel for strength and durability

Part No.	Net Weight: lb	kg
22-796530	43.0	19.5

Part No.	Description	Quantity
22-796535	Carrying Case, Monopod/Pulley Kit	1
22-796540	Monopod Head/Pulley	1
22-796595	Tri-Anchor	1
22-796570	Monopod/Pulley Roof Plate	1
22-796590	Monopod/Pulley Angle Base	1



HITCH BASE (optional)

Can be utilized by putting into a 2" hitch receiver and in conjunction with the Monopod kit so you can have a high point anchor off of your vehicle

Part No. 22-796575

BIPOD KIT

The Bipod Kit is designed for use in various lifting and moving applications. It can be utilized in high angle, cliff overhangs, grain elevator rescue, confined space, trench, mine and open pit rescues. The kit includes Bipod Head and two Hinged Base Plates with Anchor Rings.

Product Features:

- 60° maximum spread angle with parallel max indication lines
- High strength hinged rotating anchor Plate
- Bipod Conversion Kit is constructed of lightweight aluminum and stainless steel for strength and durability

Part No.	Net Weight: lb	kg
22-796810	60.6	27.5

Part No.	Description	Quantity
22-796180E	Bipod Base Plate	2
22-796820	Bipod Head	1
22-796818	Carrying Case, Bipod	1



TRIPOD KIT

Designed to complement the Rescue Support System line, the Tripod kit is manufactured of lightweight aluminum and stainless steel for strength and durability. This kit is designed for use with your rescue struts already used in trench rescue, building collapse and vehicle stabilization. Attach the Tripod head to an AcmeThread, LockStroke or LongShore Strut and/or Extension to create a strong, stable support for tripod use as a jack stand and/or high support. A durable carrying case makes transport easy.

Part No.	Net Weight: lb	kg
22-796300	63.0	28.6

Part No.	Description	Quantity
22-796010	Tripod Head	1
22-796150	Hinged Base with Anchor Ring	3
22-796155	30 ft Chain with Grab Hook	1
22-796305	Carrying Case, Tripod	1





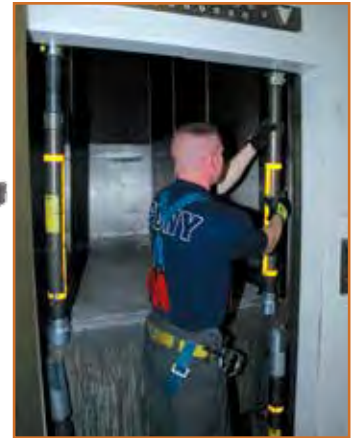
ELEVATOR SUPPORT UNIT ADAPTER KIT

Paratech's Elevator Support Unit (ESU) safely stabilizes an elevator and prevents it from moving. When deployed, the ESU causes zero to minimal damage to elevator cars and affords rescue teams precious time to extricate passengers and save lives. Two unique rescue base and end Plates form the core components of this system. An Angled Rubber Base attaches to either Rescue Strut and grips the floor, while the Elevator Support Arm attaches to the top of the Rescue Strut and hooks under the elevator car.

Part No.	Description	Quantity
22-796260L	Elevator Support Left Arm	1
22-796260R	Elevator Support Right Arm	1
22-796266	Angled Rubber Base	6
22-000915	Case, ESU Kit	1



Part No.	Net Weight: lb	kg
22-796260	27.2	12.3



ELEVATOR SHAFT RESCUE KIT (ESR)

Elevator Shaft Rescue (ESR) Kit: designed in conjunction with City of Chicago and IFSI (University of Illinois Fire Service Institute) rescue professionals, this kit makes elevator shaft rescue easy and efficient through the creation of a wedged truss bar.

- FAST AND EASY SET UP
- CAN BE SET UP IN DOORWAYS, WINDOWS, ELEVATOR DOORS, BLIND SHAFT ELEVATOR HATCHES, INDUSTRIAL HIGH POINTS, SHIP BOARD APPLICATIONS, ETC.
- ADJUSTABLE BASE FOR LONGER DOOR THRESHOLDS
- REMOVABLE ANGLE ON BASE FOR WINDOW HIGH POINTS
- RUBBER FOOT PLATE DOES NOT MARK OR DAMAGE MARBLE, GRANITE OR WOODEN FLOORS

Part No.	Description	Quantity
22-796266	Angled Rubber Base	2
22-796891	T-Junction	2
22-796905	Adjustable Hinged Base	2
22-796430	Shoring Hammer	1
22-796895	Header Swivel Base	2

*Struts Not Included in Kit



Part No.	Net Weight: lb	kg
22-796890K	41.48	19.44



TRENCH CUSHION KIT

Designed to tackle one of the biggest challenges in trench collapse rescue, this kit includes the equipment you need to quickly and safely support your shoring panels. With our proven trench cushion system you can significantly reduce the time needed to backfill your shoring panels and maintain a vertical surface for support. Included in the kit are two low pressure square cushions with a 3.3 US ton (3 m ton) capacity that can fill up to an 18 in (46 cm) void. Each cushion is fitted with o-ring harnesses for ease of lowering into the trench and a yellow centering cross to help in positioning the cushions along the sides of the trench wall. Combined with our Paratech Rescue Struts this kit will equip you with the right tools for your next trench rescue.

Part No.	Description	Quantity
22-887060	Trench Cushion 18 in / 45.7 cm 3.3 US Ton / 3.0 m ton Capacity	2
22-887310	Single Cushion Controller 7.25 psi / 0.5 bar	2
22-887400	Air Hose 1 in / 25.4 cm dia. x 20 ft / 6.1m Red	1
22-887401	Air Hose 1 in / 25.4 cm dia. x 20 ft / 6.1m Blue	1
22-890513	Air Hose 3/8 in / 9.5 dia. x 16 ft / 5m Black	1



Part No.	Net Weight: lb	kg
22-887070	85.5	38.8



RAKER SETS & ACCESSORIES

Paratech offers the necessary accessories to convert our LongShore Struts into a fully deployable raker system that is fast, strong and easy to install. Paratech's innovative Raker accessories and LongShore Struts meet US&R requirements for strength and deployability. The Paratech LongShore System offers unique features and benefits ensuring proven performance every time the system is deployed.

ABSOLUTE RAKER

Paratech once again sets a new standard, no wood, no pins, no chains...no hassle. The Absolute Raker provides flexibility, functionality and economy.

Never worry about wood again—fully deployable in minutes—or easily turn your existing Paratech Raker into an Absolute Raker, with the Standard to Absolute Upgrade Kit . Interoperational with all Paratech Rescue Support Systems, as always.



6 FT. /1.8 m ABSOLUTE RAKER SET

Part No.	Description	lb	kg
22-796984	6 ft / 1.8 m Deployable Absolute Raker	795.3 lb	360.7 kg

Part No.	Description	Quantity
22-796180C	Hinged Base 12 w/ Anchor Ring	2
22-796250	Raker Rail Latch	4
22-796258C	Raker Rail	4
22-796280	Raker Rail Junction	2
22-796290	Raker Junction Base	2
22-796330	Clamp and Clevis	12
22-796342	LongShore Extension 235	7
22-796350	LongShore Adjustable Brace B57	7
22-796356	LongShore Extension 435	2
22-796360	LongShore Strut 610	4
22-796376	LongShore Extension 635	2
22-796469	Raker Rail Splice	2
22-796475	Raker Angle Base	2
22-796656	Rail 4 Latch Holder	1

8 FT. /2.4 m ABSOLUTE RAKER SET

Part No.	Description	lb	kg
22-796985	8 ft / 2.4 m Deployable Absolute Raker	842.3 lb	382.0 kg

Part No.	Description	Quantity
22-796180C	Hinged Base 12 w/ Anchor Ring	2
22-796250	Raker Rail Latch	4
22-796258B	Raker Rail 4	2
22-796258D	Raker Rail 8	2
22-796280	Raker Rail Junction	2
22-796290	Raker Junction Base	2
22-796330	Clamp and Clevis	12
22-796342	LongShore Extension 235	5
22-796350	LongShore Adjustable Brace B57	7
22-796356	LongShore Extension 435	2
22-796370	LongShore Strut 812	4
22-796376	LongShore Extension 635	2
22-796469	Raker Rail Splice	2
22-796475	Raker Angle Base	2
22-796656	Rail 4 Latch Holder	1



ABSOLUTE FLYING RAKER

Paratech fully mechanical Absolute Flying Raker Sets leave the wood behind. Stronger, faster and easier than wood, the Absolute Flying Raker in 6 ft (1.8 m) or 8 ft (2.4 m) sets, allow rescue teams to build rakers around the rubble pile.

Use the Woodless Flying Raker kit upgrade to upgrade a Standard Flying Raker to an Absolute Woodless Flying Raker. Interoperational with all Paratech Rescue Support Systems, as always.

6 FT. /1.8 m ABSOLUTE FLYING RAKER SET

Part No.	Description	lb	kg
22-796984F	6 ft / 1.8 m Absolute Flying Raker Set	535.9 lb	243.1 kg

Part No.	Description	Quantity
22-796180C	Hinged Base 12 w/ Anchor Ring	2
22-796258C	Raker Rail 6	2
22-796330	Clamp and Clevis	12
22-796342	LongShore Extension 235	4
22-796350	LongShore Adjustable Brace B57	5
22-796348	LongShore Adjustable Brace B23	2
22-796356	LongShore Extension 435	2
22-796360	LongShore Strut 610	2
22-796376	LongShore Extension 635	2
22-796475	Raker Angle Base	2
22-796656	Rail 4 Latch Holder	1
22-796250	Raker Rail Latch	4

8 FT. /2.4 m ABSOLUTE FLYING RAKER SET

Part No.	Description	lb	kg
22-796985F	8 ft / 2.4 m Absolute Flying Raker Set	574.5 lb	260.6 kg

Part No.	Description	Quantity
22-796180C	Hinged Base 12 w/ Anchor Ring	2
22-796258D	Raker Rail 8	2
22-796330	Clamp and Clevis	12
22-796342	LongShore Extension 235	4
22-796350	LongShore Adjustable Brace B57	5
22-796348	LongShore Adjustable Brace B23	2
22-796356	LongShore Extension 435	2
22-796370	LongShore Strut 812	2
22-796376	LongShore Extension 635	2
22-796475	Raker Angle Base	2
22-796656	Rail 4 Latch Holder	1
22-796250	Raker Rail Latch	4



STANDARD TO ABSOLUTE RAKER UPGRADE KIT

Part No.	Description	lb	kg
22-796983	6 ft / 1.8 m Standard Raker to 6 ft Absolute Raker Upgrade	354.3 lb	160.7 kg

Part No.	Description	Quantity
22-796280	Rail Junction	2
22-796330	Clamp and Clevis	12
22-796342	LongShore Extension 235	5
22-796350	LongShore Adjustable Brace B57	7



RAKER MIDPOINT BRACE KIT

The mid point brace kit can be utilized with the 6' & 8' Raker Sets and will greatly increase the strength of your Raker Kit. Adding this item to your Raker Set will guarantee you have the strongest raker.

Kit Part No.	Net Weight:	lb	kg
22-796484		97.6	44.3

Part No.	Description	Quantity
22-796350	Adjustable Brace Model B57	2
22-796250	Raker Rail Latch	2
22-796330	Clamp 335 & Clevis	2





FLYING RAKER KIT

Add this kit to your 6 or 8 ft. Standard Raker Kit to turn it into a Flying Raker.

Kit Part No.	Net Weight:	lb	kg
22-796486		46.8	21.2

Part No.	Description	Quantity
22-796348	Adjustable Brace Model B23	2
22-796250	Raker Rail Latch	2
22-796330	Clamp 335 & Clevis	2

FLYING RAKER UPGRADE KIT

Use this kit to turn your Standard Raker Kit into a Flying Raker and increase your wall support capacity from 8' (244 cm) to 24' (732 cm).

Kit Part No.	Net Weight:	lb	kg
22-796488		101.4	45.9

Part No.	Description	Quantity
22-796180C	Hinged Base 12 w/Anchor Ring	2
22-796250	Raker Rail Latch	2
22-796310	Nailing Pad w/Clamp	2
22-796330	Clamp & Clevis	2
22-796348	LongShore Adjustable Brace B23	2
22-796475	Raker Angle Base	2

RAKER EXPANSION KIT

Increase your Raker Set capacity by adding this additional cache of equipment and increase your wall support capacity from 8' to 24'.

Kit Part No.	Net Weight:	lb	kg
22-796485		143.8	65.2

Part No.	Description	Quantity
22-796180C	Base Plate 12 12 in / 30.5 cm	2
22-796475	Raker Angle Base	2
22-796310	Nailing Pad with Clamp	6
22-796486	Flying Raker Kit (qty. 2 kits below)	2
22-796348	Adjustable Brace Model B23	4
22-796250	Raker Rail Latch	4
22-796330	Clamp 335 & Clevis	4

WOODLESS FLYING RAKER BRACE KIT

Use this kit to upgrade your 6 ft / 1.8 m Flying Raker to an Absolute Flying Raker

Part No.	Description	lb	kg
22-796487	Woodless Flying Raker Brace Kit 6 ft Absolute Raker Upgrade	231.9 lb	105.2 kg

Part No.	Description	Quantity
22-796330	Clamp and Clevis	10
22-796342	LongShore Extension 235	2
22-796350	LongShore Adjustable Brace B57	5

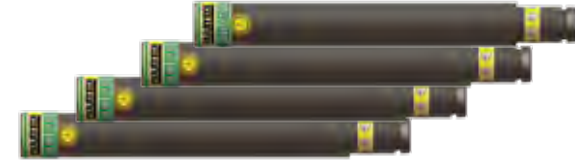


BASIC 12 SHORE TRENCH KIT

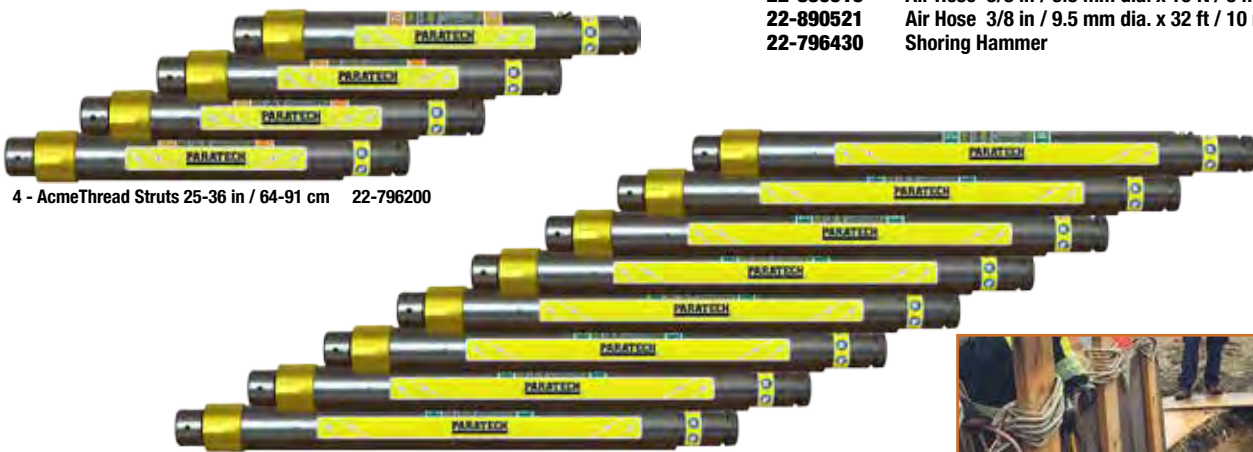
This kit gives the rescuer the ability to construct up to 12 shores for use in a trench rescue. With the available air controls and vibrant colored hoses, this is a great starter trench kit.



2 - Strut Extension 12 in / 30 cm 22-796012



4 - Strut Extension 24 in / 61 cm 22-796024

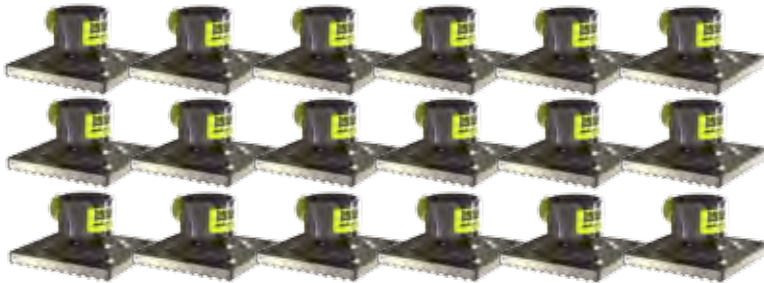


4 - AcmeThread Struts 25-36 in / 64-91 cm 22-796200

8 - AcmeThread Struts 37-58 in / 94-147 cm 22-796202



6 - Square Rigid Base 6 in / 15.2 cm 22-796070



18 - Square Swivel Base 6 in / 15.2 cm 22-796060



2 - Air Hose
3/8 in / 9.5 mm dia. x 16 ft / 5 m Yellow
22-890515



2 - Air Hose
3/8 in / 9.5 mm dia. x 32 ft / 10 m Yellow
22-890520



2 - Air Hose
3/8 in / 9.5 mm dia. x 16 ft / 5 m Red
22-890516



2 - Air Hose
3/8 in / 9.5 mm dia. x 32 ft / 10 m Red
22-890521



1 - Dual Deadman Strut
Controller G3
250 psi / 17.2 bar
22-796103G3



4 - Shoring Hammer
22-796430



1 - Strut/Airgun Regulator
5,500-300 psi / 379.2-20.7 bar
22-895400G2

Kit Part No.		Net Weight: lb	kg
22-796860	US	374.6	
22-796860D	Metric		170.2

Part No.	Description	Quantity
22-796200	AcmeThread Strut 25-36 in / 64-91 cm	4
22-796202	AcmeThread Strut 37-58 in / 94-147 cm	8
22-796012	Strut Extension 12 in / 30 cm	2
22-796024	Strut Extension 24 in / 61 cm	4
22-796060	Square Swivel Base 6 in / 15.2 cm	18
22-796070	Square Rigid Base 6 in / 15.2 cm	6
22-796103G3	Dual Deadman Strut Controller G3 250 psi / 17.2 bar	1
22-895400G2	Strut/Airgun Regulator 5,500-0 psi / 379.2-0 bar	1
22-890515	Air Hose 3/8 in / 9.5 mm dia. x 16 ft / 5 m Yellow	2
22-890520	Air Hose 3/8 in / 9.5 mm dia. x 32 ft / 10 m Yellow	2
22-890516	Air Hose 3/8 in / 9.5 mm dia. x 16 ft / 5 m Red	2
22-890521	Air Hose 3/8 in / 9.5 mm dia. x 32 ft / 10 m Red	2
22-796430	Shoring Hammer	4



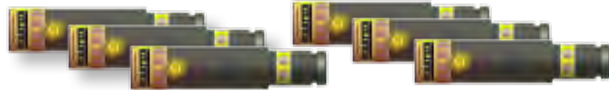


16 SHORE TRENCH KIT

This kit gives the rescuer the ability to construct up to 16 shores for use in a trench rescue. With the available Trench Cushions to fill void spaces and the air controls & vibrant colored hoses, this is a great kit for your Trench Rescue needs.



4 - Strut Extension 6 in / 15 cm 22-796017



6 - Strut Extension 12 in / 30 cm 22-796012



6 - Strut Extension 24 in / 61 cm 22-796024



2 - LockStroke Struts 25-36 in / 64-91 cm 22-796000



2 - AcmeThread Struts 37-58 in / 94-147 cm 22-796202



4 - AcmeThread Struts 25-36 in / 64-91 cm 22-796200



6 - AcmeThread Struts 19-25 in / 48-64 cm 22-796206



2 - AcmeThread Struts 12-15 in / 31-38 cm 22-796212



1 - Dual Deadman Strut Controller G3 250 psi / 17.2 bar 22-796103G3



4 - Shoring Hammer 22-796430



1 - Strut/Airgun Regulator 5,500-0 psi / 379.2-0 bar 22-895400G2



2 - Trench Cushion 18 in / 45.7 & 3.3 US Ton / 3.0 Metric Ton Capacity 22-887060



2 - Single Cushion Controller 7.25 psi 22-887310



1 - Air Hose 1 in / 25.4 mm dia. x 20 ft / 6.1 m Red 22-887400



1 - Air Hose 1 in / 25.4 mm dia. x 20 ft / 6.1 m Blue 22-887401



1 - Air Hose 3/8 in / 9.5 mm dia. x 16 ft / 5 m Black 22-890513



1 - Air Hose 3/8 in / 9.5 mm dia. x 16 ft / 5 m Black 22-890513



8 - Square Rigid Base 6 in / 15.2 cm 22-796070



2 - Y Connector 2 (2 couplings, 1 nipple) 22-890736



2 - Air Hose 3/8 in / 9.5 mm dia. x 32 ft / 10 m Yellow 22-890520



2 - Air Hose 3/8 in / 9.5 mm dia. x 32 ft / 10 m Red 22-890521



24 - Square Swivel Base 6 in / 15.2 cm 22-796060

Kit Part No.		Net Weight: lb	kg
22-796862	US	445.8	
22-796862D	Metric		202.6

Part No.	Description	Quantity
22-796212	AcmeThread Strut 12-15 in / 31-38 cm	2
22-796206	AcmeThread Strut 19-25 in / 48-64 cm	6
22-796200	AcmeThread Strut 25-36 in / 64-91 cm	4
22-796202	AcmeThread Strut 37-58 in / 94-147 cm	2
22-796000	LockStroke Strut 25-36 / 64-91 cm	2
22-796017	Strut Extension 6 in / 15 cm	4
22-796012	Strut Extension 12 in / 30 cm	6
22-796024	Strut Extension 24 in / 61 cm	6
22-796103G3	Dual Deadman Strut Controller G3 250 psi / 17.2 bar	1
22-895400G2	Strut/Airgun Regulator 5,500-300 psi / 379.2-20.7 bar	1
22-890520	Air Hose 3/8 in / 9.5 mm dia. x 32 ft / 10 m Yellow	2
22-890521	Air Hose 3/8 in / 9.5 mm dia. x 32 ft / 10 m Red	2
22-890513	Air Hose 3/8 in / 9.5 mm dia. x 16 ft / 5 m Black	1
22-890736	Y Connector 2 (2 coupling, 1 nipple)	2
22-796060	Square Swivel Base 6 in / 15.2 cm	24
22-796070	Square Rigid Base 6 in / 15.2 cm	8
22-796430	Shoring Hammer	4
22-887070	Trench Cushion Kit (qty. 1 kit below)	1
22-887060	Trench Cushion 18 in / 3.25 ton capacity	2
22-887310	Single Cushion Controller 7.25 psi	2
22-887400	Air Hose 1 in / 25.4 mm dia. x 20 ft / 6.1 m Red	1
22-887401	Air Hose 1 in / 25.4 mm dia. x 20 ft / 6.1 m Blue	1
22-890513	Air Hose 3/8 in / 9.5 mm dia. x 16 ft / 5 m Black	1



LIGHT US&R RESCUE STRUT SYSTEM

This system affords the rescuer the ability to tackle most structural collapse scenarios. The system includes (1) 6' Raker set and numerous Rescue Struts and components which would be a great start to any Fire Department looking to be more involved in structural collapse incidents.



2 - LongShore 610 Struts 72-116 in / 183-295 cm 22-796360



2 - AcmeThread Struts 56-88 in / 142-224 cm 22-796204



4 - Shoring Hammer 22-796430



2 - AcmeThread Struts 37-58 in / 94-147 cm 22-796202



2 - Strut Extension 12 in / 30 cm 22-796012



2 - AcmeThread Struts 12-15 in / 31-38 cm 22-796212



2 - AcmeThread Struts 25-36 in / 64-91 cm 22-796200



2 - AcmeThread Struts 19-25 in / 48-64 cm 22-796206



2 - Strut Extension 36 in / 91 cm 22-796036



2 - Strut Extension 24 in / 61 cm 22-796024

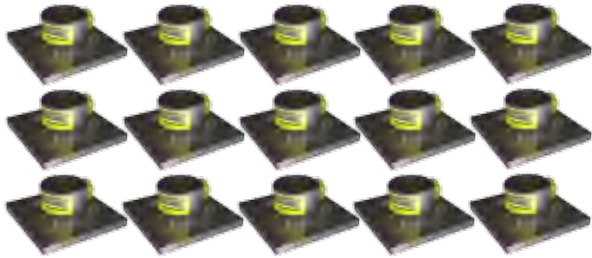




15 - Square Swivel Base 6 in / 15.2 cm 22-796060



1 - Strut/Airgun Regulator
5,500-0 psi
379.2-0 bar
22-895400G2



15 - Square Rigid Base 6 in / 15.2 cm 22-796070



1 - Dual Deadman Strut Controller G2
250 psi / 17.2 bar
22-796103G3



1 - Air Hose
3/8 in / 9.5 mm dia. x 32 ft / 10 m
Yellow
22-890520



1 - Air Hose
3/8 in / 9.5 mm dia. x 32 ft / 10 m
Red
22-890521



1 - Air Hose
3/8 in / 9.5 mm dia. x 32 ft / 10 m
Black
22-890522



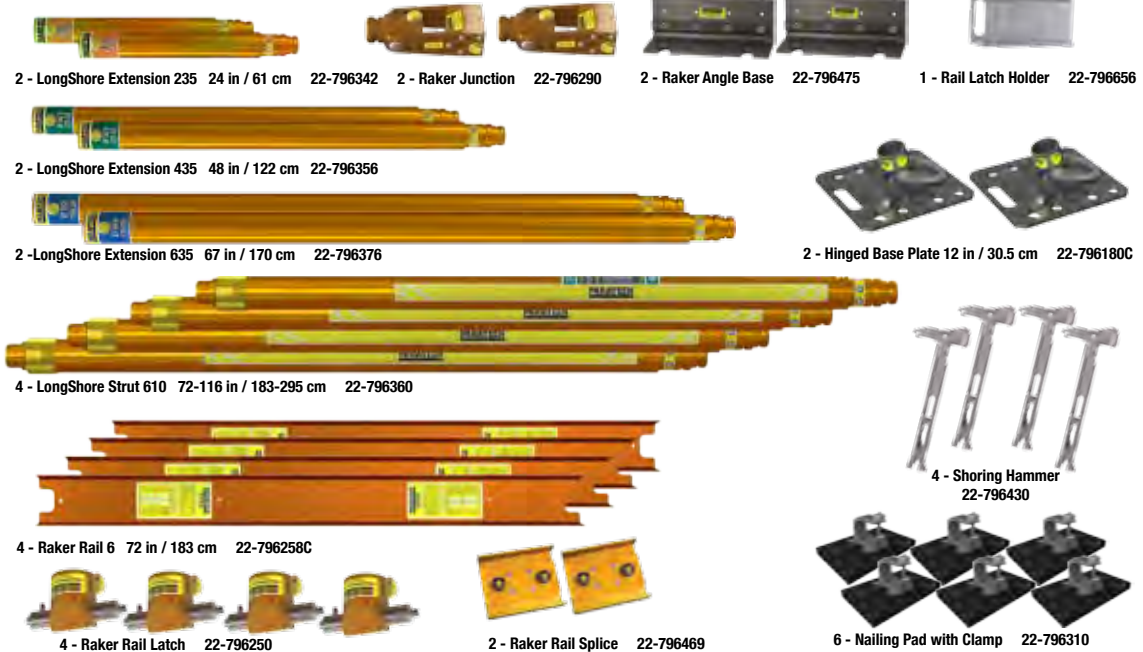
2 - Load Indicator
20,000 lbs.
22-796550

System Part No.		Net Weight: lb	kg
22-796901	US	740.1	
22-796901M	Metric		335.7

Part No.	Description	Quantity
22-796212	AcmeThread Strut 12-15 in / 31-38 cm	2
22-796206	AcmeThread Strut 19-25 in / 48-64 cm	2
22-796200	AcmeThread Strut 25-36 in / 64-91 cm	2
22-796202	AcmeThread Strut 37-58 in / 94-147 cm	2
22-796204	AcmeThread Strut 56-88 in / 142-224 cm	2
22-796360	LongShore Strut 610, 72-116 in / 183-295 cm	2
22-796012	Strut Extension 12 in / 30 cm	2
22-796024	Strut Extension 24 in / 61 cm	2
22-796036	Strut Extension 36 in / 91 cm	2
22-796060	Square Swivel Base 6 in / 15.2 cm	15
22-796070	Square Rigid Base 6 in / 15.2 cm	15
22-796103G3	Dual Deadman Strut Controller G2 250 psi / 17.2 bar	1
22-895400G2	Strut/Airgun Regulator 5,500-0 psi / 379.2-0 bar	1
22-796550	Load Indicator 20,000 lbs.	2
22-890520	Air Hose 3/8 in / 9.5 mm dia. x 32 ft / 10 m Yellow	1
22-890521	Air Hose 3/8 in / 9.5 mm dia. x 32 ft / 10 m Red	1
22-890522	Air Hose 3/8 in / 9.5 mm dia. x 32 ft / 10 m Black	1
22-796430	Shoring Hammer	4

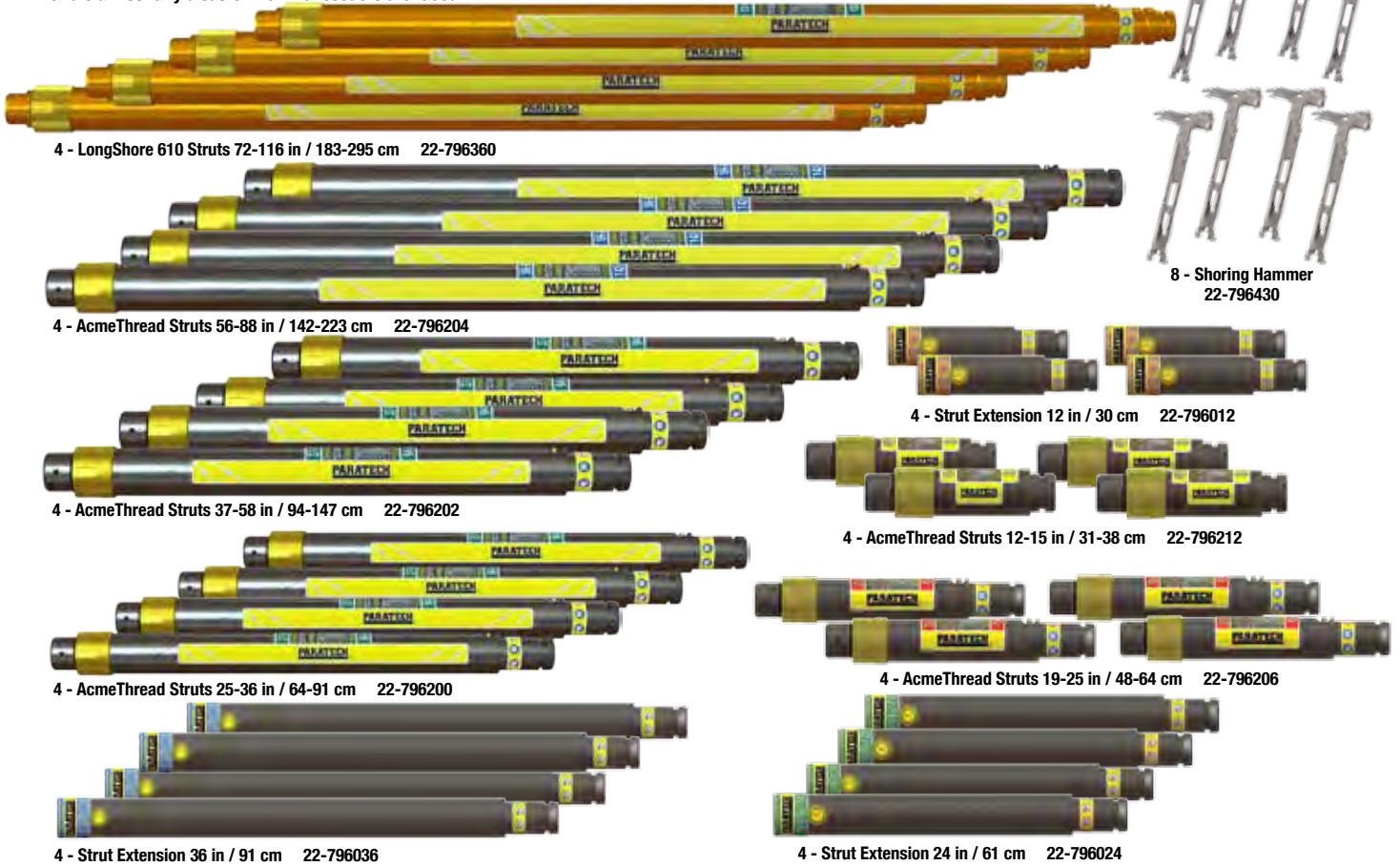
22-796481	6 ft / 1.8 m Deployable Raker Set (qty. 1 kit below)	1
22-796360	LongShore Strut 610 72-116 in / 183-295 cm	4
22-796342	LongShore Extension 235 24 in / 61 cm	2
22-796356	LongShore Extension 435 48 in / 122 cm	2
22-796376	LongShore Extension 635 67 in / 170 cm	2
22-796258C	Raker Rail 6	4
22-796180C	Hinged Base Plate w/Anchor Ring 12 in / 30.5 cm	2
22-796250	Raker Rail Latch	4
22-796290	Raker Junction Base	2
22-796310	Nailing Pad w/ Clamp	6
22-796469	Raker Rail Splice	2
22-796475	Raker Angle Base	2
22-796430	Shoring Hammer	4
22-796656	Rail Latch Holder	1

22-796481 6 ft / 1.8 m Deployable Raker Set



US&R RESCUE STRUT SYSTEM

The US&R Rescue Strut System is one of the most complete structural collapse systems that has been standardized by the FEMA US&R teams. For any team serious about Urban Search & Rescue, this is the system to make it happen. The system includes (2) 6' Raker sets and numerous Rescue Struts and components to handle almost any disaster that the rescuers are faced with.



4 - LongShore 610 Struts 72-116 in / 183-295 cm 22-796360

4 - AcmeThread Struts 56-88 in / 142-223 cm 22-796204

4 - AcmeThread Struts 37-58 in / 94-147 cm 22-796202

4 - AcmeThread Struts 25-36 in / 64-91 cm 22-796200

4 - Strut Extension 36 in / 91 cm 22-796036



8 - Shoring Hammer 22-796430



4 - Strut Extension 12 in / 30 cm 22-796012



4 - AcmeThread Struts 12-15 in / 31-38 cm 22-796212

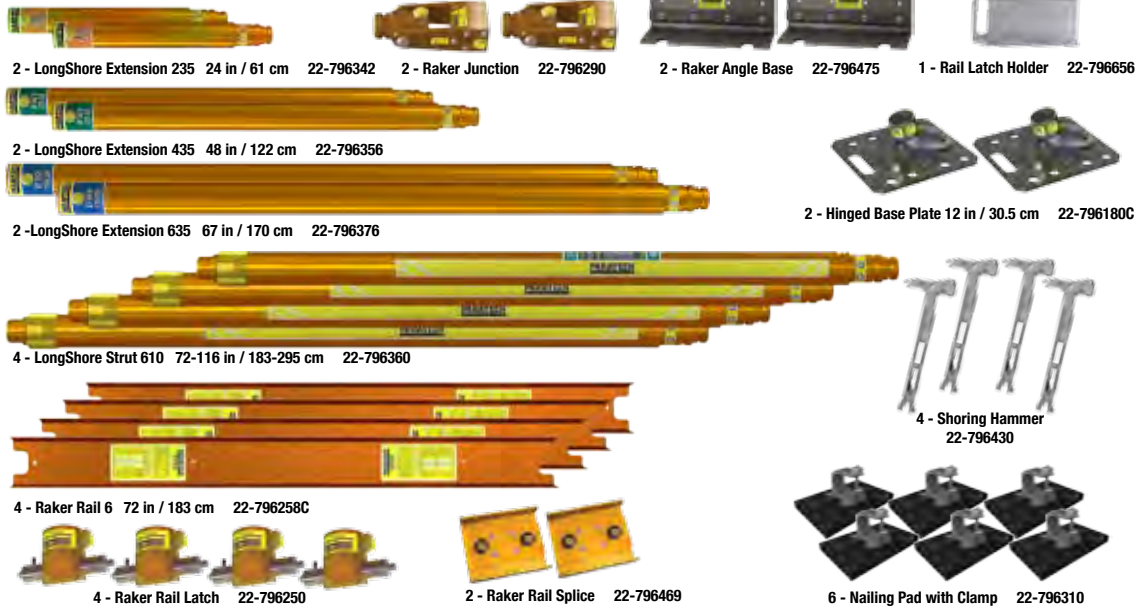


4 - AcmeThread Struts 19-25 in / 48-64 cm 22-796206



4 - Strut Extension 24 in / 61 cm 22-796024

22-796481 6 ft / 1.8 m Deployable Raker Set



2 - LongShore Extension 235 24 in / 61 cm 22-796342

2 - Raker Junction 22-796290

2 - Raker Angle Base 22-796475

1 - Rail Latch Holder 22-796656

2 - LongShore Extension 435 48 in / 122 cm 22-796356

2 - Hinged Base Plate 12 in / 30.5 cm 22-796180C

2 - LongShore Extension 635 67 in / 170 cm 22-796376

4 - LongShore Strut 610 72-116 in / 183-295 cm 22-796360

4 - Shoring Hammer 22-796430

4 - Raker Rail 6 72 in / 183 cm 22-796258C

4 - Raker Rail Latch 22-796250

2 - Raker Rail Splice 22-796469

6 - Nailing Pad with Clamp 22-796310



30 - Square Swivel Base 6 in / 15.2 cm 22-796060



2 - Strut/Airgun Regulator
5,500-0 psi
379.2-0 bar
22-895400G2

System Part No.		Net Weight: lb	kg
22-796900	US	1713.6	
22-796900M	Metric		777.3

Part No.	Description	Quantity
22-796212	AcmeThread Strut 12-15 in / 31-38 cm	4
22-796206	AcmeThread Strut 19-25 in / 48-64 cm	4
22-796200	AcmeThread Strut 25-36 in / 64-91 cm	4
22-796202	AcmeThread Strut 37-58 in/ 94-147 cm	4
22-796204	AcmeThread Strut 56-88 in/ 142-224 cm	4
22-796360	LongShore Strut 610, 72-116 in/ 183-295 cm	4
22-796012	Strut Extension 12 in / 30 cm	4
22-796024	Strut Extension 24 in / 61 cm	4
22-796036	Strut Extension 36 in / 91 cm	4
22-796060	Square Swivel Base 6 in / 15.2 cm	30
22-796070	Square Rigid Base 6 in / 15.2 cm	30
22-796103G3	Dual Deadman Strut Controller G3 250 psi / 17.2 bar	2
22-895400G2	Strut/Airgun Regulator 5,500-0 psi / 379.2-0 bar Load Indicator 20,000 lbs.	2
22-796550	Air Hose 3/8 in / 9.5 mm dia. x 32 ft / 10 m Yellow	4
22-890520	Air Hose 3/8 in / 9.5 mm dia. x 32 ft / 10 m Red	2
22-890521	Air Hose 3/8 in / 9.5 mm dia. x 32 ft / 10 m Red	2
22-890522	Air Hose 3/8 in / 9.5 mm dia. x 32 ft / 10 m Black	2
22-796430	Shoring Hammer	8



30 - Square Rigid Base 6 in / 15.2 cm 22-796070



2 - Dual Deadman Strut Controller G3
250 psi / 17.2 bar
22-796103G3



2 - Air Hose
3/8 in / 9.5 mm dia.
x 32 ft / 10m Yellow
22-890520



2 - Air Hose
3/8 in / 9.5 mm dia.
x 32 ft / 10 m Red
22-890521



2 - Air Hose
3/8 in / 9.5 mm dia.
x 32 ft / 10 m Black
22-890522



4 - Load Indicator
20,000 lbs.
22-796550

22-796481	6 ft / 1.8 m Deployable Raker Set (qty. 2 kit below)	2
22-796360	LongShore Strut 610 72-116 in / 183-295 cm	8
22-796342	LongShore Extension 235 24 in / 61 cm	4
22-796356	LongShore Extension 435 48 in / 122 cm	4
22-796376	LongShore Extension 635 67 in / 170 cm	4
22-796258C	Raker Rail 6	8
22-796180C	Hinged Base Plate w/Anchor Ring 12 in / 30.5 cm	4
22-796250	Raker Rail Latch	8
22-796290	Raker Junction Base	4
22-796310	Nailing Pad w/ Clamp	12
22-796469	Raker Rail Splice	4
22-796475	Raker Angle Base	4
22-796430	Shoring Hammer	8
22-796656	Rail Latch Holder	2

22-796481 6 ft / 1.8 m Deployable Raker Set

2 - LongShore Extension 235 24 in / 61 cm 22-796342

2 - Raker Junction 22-796290

2 - Raker Angle Base 22-796475

1 - Rail Latch Holder 22-796656

2 - LongShore Extension 435 48 in / 122 cm 22-796356

2 - Hinged Base Plate 12 in / 30.5 cm 22-796180C

2 - LongShore Extension 635 67 in / 170 cm 22-796376

4 - LongShore Strut 610 72-116 in / 183-295 cm 22-796360

4 - Shoring Hammer 22-796430

4 - Raker Rail 6 72 in / 183 cm 22-796258C

4 - Raker Rail Latch 22-796250

2 - Raker Rail Splice 22-796469

6 - Nailing Pad with Clamp 22-796310

PARATECH VEHICLE STABILIZATION KITS

Paratech Vehicle Stabilization Kits have the strength and flexibility to handle any size vehicle anytime, anywhere. This includes sub compact cars, buses, cement trucks and even train locomotives. Additionally, these components provide the extra value of being completely interchangeable with your other Paratech equipment for building collapse and trench rescue scenarios. They are strong, sturdy and reliable. Paratech systems are the easiest to use and the strongest VSKs on the market today.

VSK COMPARISONS

	Supporter	Standard	Highway	Interstate
Max Load	20,000lb / 9,072kg	40,00lb / 18,143kg	80,000lb / 36,287kg	120,000lb / 54,431 kg
# of AcmeThread Struts	0	2	4	0
# of LongShore Struts	0	0	0	6
# of Extensions	1	4	6	6
# of Bases	1	4	8	18
# of Ratchet Belts	1 (Attached)	4	4	6

With the highest industry safety standard, Paratech's VSK can hold 10,000lb / 4,536kg up to 120,000lb / 54,431kg. Paratech vehicle stabilization kits have the strength & flexibility to handle any size vehicle anytime, anywhere.



VSK CONTROLLER 2

Safely use compressed air to extend struts!
This innovative controller is capable of extending the heaviest combination of struts and extensions with a simple on / off control. Its low 29 PSI / 2Bar pressure reduction and unique automatic vent relief feature, eliminates the fear of over pressurizing in the event of a load shift, ensuring a secure and steady strut extension. Ideal for safely chasing stabilization struts while performing a lift.

NOW WITH TWO AIR OUTLETS!
Net Weight: 2.4 lbs 1.0 kg
Part No. 22-796V02





PARATECH

VEHICLE STABILIZATION KITS

SUPPORTER X2- ALL-IN-ONE VEHICLE STABILIZER

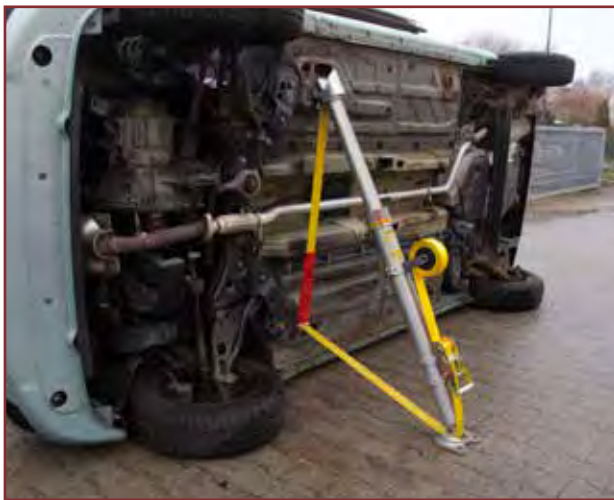
The 'ALL IN ONE' Vehicle Stabilizer!

Stronger, Faster, Safer!

When you need to stabilize a vehicle accident scene quickly, there is nothing faster or stronger. With the TwistLock Collar all you need to do is TWIST, EXTEND, LOCK and the SUPPORTER can stabilize 10,000 lb / 4,535 kg with a 2:1 safety factor at ANY height.

Maximum load up to 10,000 lb / 4,535 kg with a 2:1 safety factor

- EASY EXTRA EXTENSION ABILITY
- WEIGHT: 35.0 LB / 15.9 KG
- COLLAPSED, BASE ON GROUND 40 IN / 101.6 CM
- EXTENDED, BASE ON GROUND 65.4 IN / 166.1 CM
- EXTENDED WITH EXTENSION 95.4 IN / 242.3 CM



Kit Part No.	Net Weight: lb	kg
22-797E12E SUPPORTER X2	35.0	15.9



- SPIKE BASE**
- POSITIVE GRIP
 - SHACKLE HOLE
 - ANGLE INDICATOR
 - REPLACEABLE SPIKES
 - INTEGRATED V & CONE BASE

QUICK SUPER EXTENSION TO 95.4 IN / 242.3 CM

QUICK EXTENSION TO 70.0 IN / 177.8 CM

TWIST-LOCK COLLAR

AUTO-REWIND BELT

INTEGRATED RATCHET BELT

90° BASE FOLDS FLAT FOR EASY STORAGE



VEHICLE STABILIZATION KITS

PARATECH



VSK BASE KITS

Bases integrated with ratchet belt and anchor ring, ready for rapid deployment, making vehicle stabilization quicker & easier.

VSK Base 6 Kit Part No.	Net Weight: lb	kg
22-796303	25.9	11.7

Part No.	Description	Quantity
22-796331	VSK Base 6	1
22-797042E	Adjustable Carrying Handle	1
22-796161	Tie-Down Keys w/J Hook	1

Product Features:

- FAST AND EASY TO DEPLOY
- AVAILABLE WITH SMALL OR LARGE SIZE BASE FOOT
- INTEGRATED ANCHOR RING FOR MULTIPLE RATCHET BELT USAGE
- BUILT IN RATCHET KEEPS HOT ZONE FREE OF TRIPPING HAZARD FROM UNUSED BELT
- COMPATIBLE WITH ALL OF PARATECH'S ACMETHREAD AND LOCKSTROKE RESCUE SUPPORT SYSTEM COMPONENTS

VSK Base 12 Kit Part No.	Net Weight: lb	kg
22-796309	30.9	14.0

Part No.	Description	Quantity
22-796308	VSK Base 12	1
22-797042E	Adjustable Carrying Handle	1
22-796161	Tie-Down Keys w/J Hook	1



1 - Adjustable Carrying Handle
22-797042E

1 - Tie Down Keys with J Hook
22-796161

LOAD CAPACITY OF
20,000 LBS. / 9,071.8 KG
WITH A 4:1 SAFETY FACTOR.



1 - Adjustable Carrying Handle
22-797042E

1 - Tie Down Keys with J Hook
22-796161

LOAD CAPACITY OF
20,000 LBS. / 9,071.8 KG
WITH A 4:1 SAFETY FACTOR.



STANDARD VSK

Paratech's flagship kit and the "standard" when addressing your stabilization needs. This kit covers everything from small vehicles to large commercial/municipal vehicles.

Maximum load up to 40,000 lb / 18,144 kg with a 4:1 safety factor

Kit Part No.	Net Weight: lb	kg
22-796850	97.3	44.2

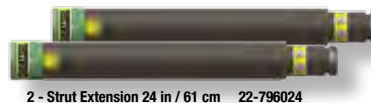
Part No.	Description	Quantity
22-796200	AcmeThread Strut 25-36 in / 64-91 cm	2
22-796012	Strut Extension 12 in / 30 cm	2
22-796024	Strut Extension 24 in / 61 cm	2
22-796025	Multi-Base	2
22-796180C	Hinged Base w/Anchor Ring 12 in / 30 cm	2
22-890553	Ratchet Belt w/Finger Hook 27 ft / 8.2 m	4
22-796161	Tie Down Keys w/J Hook	2



2 - Multi-Base
22-796025



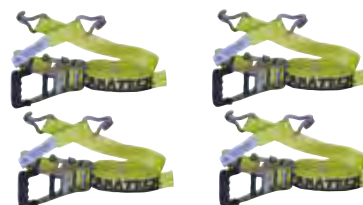
2 - Strut Extensions 12 in / 30 cm 22-796012



2 - Strut Extension 24 in / 61 cm 22-796024



2 - AcmeThread Struts 25-36 in / 64-91 cm 22-796200



4 - Ratchet Belt with Finger Hook 27 ft / 8.2 m
22-890553



2 - Tie Down Keys with J Hook
22-796161



2 - Hinged Base with Anchor Ring 12 in / 30 cm
22-796180C



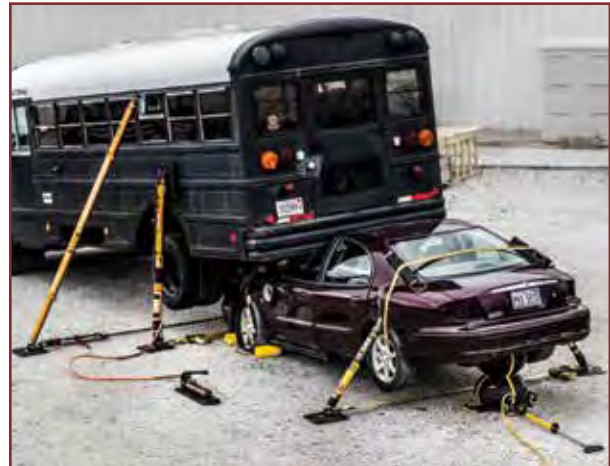


HEAVY VEHICLE EXTRICATION KIT

The most comprehensive heavy lifting kit available, utilizing the strength of HydraFusion Struts, lifting height and power of the MULTIFORCE in the Rapid Extrication Kit, as well as the environmentally friendly sturdiness of recycled plastic cribbing PLUS much more. With this Kit you can lift and stabilize any SIZE vehicle on the road. All packed up in 4 convenient, mobile carrying cases.



- STABILIZE EVERYTHING FROM SMALL VEHICLES, LARGE COMMERCIAL/MUNICIPAL VEHICLES, AND FULLY LOADED TRACTOR TRAILERS TO TRAINS
- EASE OF USE: NO PINS, NO CABLES
- EXTREMELY SAFE AND SECURE: PARATECH STRUTS ALWAYS DEFAULT TO LOCKED POSITION
- INCLUDES 4 CARRYING CASES FOR CONVENIENT STORAGE OF SMALLER PARTS, PROVIDING A FAST AND ORGANIZED WAY TO BRING EVERYTHING YOU NEED TO THE SCENE
- CUSTOM CUT OUTS IN CASES TO MAINTAIN CONSISTENCY AND ORGANIZED PLACEMENT OF COMPONENTS AFTER USE
- CASES ARE LABELED WITH CONTENTS



22-88HVEK HEAVY VEHICLE EXTRICATION KIT 22-88HVEKD HEAVY VEHICLE EXTRICATION KIT DIN

Weight 1,259.1 lbs/ 571.1 kg

Part No.	Description	Quantity
22-79HA10K	HydraFusion 10 Kit	2
22-796035	Extension Converter	2
22-796180C	Hinged Base Plate w/ Anchor Ring 12 in / 30 cm	6
22-88DREK	Rapid Extrication Kit	1
22-796720	LongShore Strut 304 36-50 in / 91-127 cm	2
22-796730	LongShore Strut 406 48-73 in / 122-185 cm	2
22-796360	LongShore Strut 610 72-116 in / 183-295 cm	2
22-796342	LongShore 235 Extension 24 in / 61 cm	2
22-796356	LongShore 435 Extension 48 in / 122 cm	2
22-796376	LongShore 635 Extension 67 in / 170 cm	2
22-000680	SPF Hooligan	1
22-796090	V Base	4
22-796270	Contour Base	4
22-796025	Multi-Base	4
22-890015	Non Slip Neoprene Pad	2
22-796P14	Double Headed Picket 40 in / 106cm	4
22-796C1H	Chain 20 ft / 6.1 m x 3/8 in, grade 100	2
22-890553	Ratchet Belt w/Finger Hook 27 ft / 8.2 m	6
22-796161	Tie Down Keys w/J Hook	4
22-796979	Chain Binder	2
22-88C00K	Cribbing Kit	1
22-796V02	VSK Controller	1

RAPID EXTRICATION KIT

Combining the speed of Paratech's MULTIFORCE Air Lifting Bag with the flexibility of our Standard VSK, the Rapid Extrication Kit gets vehicles lifted and stabilized quicker than any other.

22-88DREK RAPID EXTRICATION KIT 22-88DREDK RAPID EXTRICATION KIT- DIN

Weight 190.2 lb / 86.3 kg

Part No.	Description	Quantity
22-88D025K	Remote Placement MULTIFORCE Bag Kit	1
22-796200	AcmeThread Strut 25-36 in / 64-91 cm	2
22-796012	Strut Extension 12 in / 30 cm	2
22-796024	Strut Extension 24 in / 61 cm	2
22-796025	Multi-Base	2
22-796180C	Hinged Base 12 w/Anchor Ring	2
22-890553	Ratchet Belt 27' WLL 3300 lbs	4
22-796161	Tie Down Keys w/J Hook	2



VEHICLE STABILIZATION KITS

PARATECH



HIGHWAY VSK

Doubling the capacity of the Standard VSK, this kit is designed for multiple vehicles, longer reach and heavier weights such as a fully loaded tractor trailer.

*Maximum load up to 80,000 lb / 36,287 kg
with a 4:1 safety factor*



2 - Strut Extensions 12 in / 30 cm 22-796012



2 - Strut Extensions 24 in / 61 cm 22-796024



2 - Strut Extensions 36 in / 91 cm 22-796036



2 - AcmeThread Struts 25-36 in / 64-91 cm 22-796200



2 - AcmeThread Struts 37-58 in / 94-147 cm 22-796202



Kit Part No.	Net Weight: lb	kg
22-796852	167.5	76.0

Part No.	Description	Quantity
22-796200	AcmeThread Strut 25-36 in / 64-91 cm	2
22-796202	AcmeThread Strut 37-58 in / 94-147 cm	2
22-796012	Strut Extension 12 in / 30 cm	2
22-796024	Strut Extension 24 in / 61 cm	2
22-796036	Strut Extension 36 in / 91 cm	2
22-796025	Multi-Base	4
22-796180C	Hinged Base w/Anchor Ring 12 in / 30 cm	4
22-890553	Ratchet Belt w/Finger Hook 27 ft / 8.2 m	4
22-796161	Tie Down Keys w/J Hook	4



4 - Hinged Base with Anchor Ring 12 in / 30 cm
22-796180C



4 - Tie Down Keys with J Hook
22-796161



4 - Ratchet Belt with Finger Hook 27 ft /
8.2 m
22-890553



4 - Multi-Base
22-796025



INTERSTATE/MOTORWAY VSK

The ultimate vehicle stabilization kit. There is no vehicle on the road, runway or track that this kit cannot stabilize. When your vehicular rescue needs the strongest system available, look no further.

Maximum load up to 120,000 lb / 54,431 kg with a 4:1 safety factor

Kit Part No.	Net Weight: lb	kg
22-796855	438.2	198.0

Part No.	Description	Quantity
22-796720	LongShore Strut 304 36-50 in / 91-127 cm	2
22-796730	LongShore Strut 406 48-73 in / 122-185 cm	2
22-796360	LongShore Strut 610 72-116 in / 183-295 cm	2
22-796342	LongShore 235 Extension 24 in / 61 cm	3
22-796356	LongShore 435 Extension 48 in / 122 cm	3
22-796090	V Base	4
22-796270	Contour Base	4
22-796025	Multi-Base	4
22-796180C	Hinged Base Plate w/ Anchor Ring 12 in / 30 cm	6
22-796C1H	Chain 20 ft / 6.1 m x 3/8 in, grade 100	2
22-890553	Ratchet Belt w/Finger Hook 27 ft / 8.2 m	6
22-796161	Tie Down Keys w/J Hook	4
22-890015	Non Slip Neoprene Pad	2



3 - LongShore Extension 235 24 in / 61 cm 22-796342



3 - LongShore Extension 435 48 in / 122 cm 22-796356



2 - LongShore Strut 304 36-50 in / 91-127 cm 22-796720



2 - LongShore Strut 406 48-73 in / 119-185 cm 22-796730



2 - LongShore Strut 610 72-116 in / 183-295 cm 22-796360



4 - Tie Down Keys with J Hook 22-796161



6 - Ratchet Belt with Finger Hook 27 ft / 8.2 m 22-890553



4 - Contour Base 22-796270



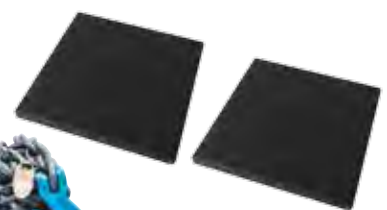
4 - V Base 22-796090



4 - Multi-Base 22-796025



6 - Hinged Base with Anchor Ring 12 in / 30 cm 22-796180C



2 - Non Slip Neoprene Pad 22-890015



2 - Chain 20 ft / 6.1 m x 3/8 in, grade 100 22-796C1H



We take our job seriously because we know your job is often a matter of life or death.

For information on how Paratech products can help you **LIFT, SHIFT, CONTAIN, STABILIZE, AND PENETRATE**, call us at 800.435.9358 or visit www.paratech.com.



Factory Distribution Center

TEAM EQUIPMENT, INC.

6620 Orchid Lake Road, New Port Richey, FL 34653-1111 U.S.A.
Phone 727-848-2424 | Toll Free 800-367-9054 | Fax 727-845-5941
www.teamequipment.com | Email team@teamequipment.com



Made in the USA and used worldwide.

Available in five languages.



ENGLISH



DANISH



GERMAN



FRENCH



RUSSIAN



CERTIFICATE NO.
ISO9001:2008



Paratech USA

P.O. Box 1000 Frankfort, IL 60423 USA
Phone: +1.815.469.3911
Fax: +1.815.469.7748
Toll Free: +1.800.435.9358
Email: paratech@paratech.com

Paratech Europe

Landbrugsvej 10 N, 5260 Odense S, Denmark
Phone: +45 66 11 24 22
Fax: +45 66 11 24 32
Email: paratech@paratech.eu

22-000223