

REVIEW ARTICLE

MECHANISMS OF DISEASE

The Pathogenesis of Rheumatoid Arthritis

Iain B. McInnes, F.R.C.P., Ph.D., and Georg Schett, M.D.

RHEUMATOID ARTHRITIS IS A COMMON AUTOIMMUNE DISEASE THAT IS associated with progressive disability, systemic complications, early death, and socioeconomic costs.¹ The cause of rheumatoid arthritis is unknown, and the prognosis is guarded. However, advances in understanding the pathogenesis of the disease have fostered the development of new therapeutics, with improved outcomes. The current treatment strategy, which reflects this progress, is to initiate aggressive therapy soon after diagnosis and to escalate the therapy, guided by an assessment of disease activity, in pursuit of clinical remission.

However, several unmet needs remain. Current conventional and biologic disease-modifying therapies sometimes fail or produce only partial responses. Reliable predictive biomarkers of prognosis, therapeutic response, and toxicity are lacking. Sustained remission is rarely achieved and requires ongoing pharmacologic therapy. The mortality rate is higher among patients with rheumatoid arthritis than among healthy persons, and cardiovascular and other systemic complications remain a major challenge. Molecular remission and the capacity to reestablish immunologic tolerance remain elusive. Elucidation of the pathogenic mechanisms that initiate and perpetuate rheumatoid arthritis offers the promise of progress in each of these domains. Rheumatoid arthritis is predominantly classified on the basis of the clinical phenotype.² We believe it is important to make the transition to a new molecular taxonomy that defines discrete disease subgroups with distinct prognostic and therapeutic significance.³

Rheumatoid arthritis is characterized by synovial inflammation and hyperplasia ("swelling"), autoantibody production (rheumatoid factor and anti-citrullinated protein antibody [ACPA]), cartilage and bone destruction ("deformity"), and systemic features, including cardiovascular, pulmonary, psychological, and skeletal disorders. These clinical features pose critical mechanistic questions: What genetic-environmental interactions must occur to facilitate autoimmunity a priori, and why does this beget articular localization? Why does synovial inflammation perpetuate? What drives local destruction leading to joint dysfunction? Why does rheumatoid arthritis cause systemic illness? We herein summarize key pathogenetic advances informing these issues.

GENETIC AND ENVIRONMENTAL FACTORS

Rheumatoid arthritis involves a complex interplay among genotype, environmental triggers, and chance. Twin studies implicate genetic factors in rheumatoid arthritis, with concordance rates of 15 to 30% among monozygotic twins and 5% among dizygotic twins.⁴ Genomewide analyses make it clear that immune regulatory factors underlie the disease.⁵ The long-established association with the human leukocyte antigen (HLA)-DRB1 locus has been confirmed in patients who are positive for rheumatoid factor or ACPA; alleles that contain a common amino acid motif

From the College of Medical, Veterinary, and Life Sciences, University of Glasgow, Glasgow, United Kingdom (I.B.M.); and the Department of Internal Medicine 3, University of Erlangen–Nuremberg, Erlangen, Germany (G.S.). Address reprint requests to Dr. McInnes at the College of Medical, Veterinary, and Life Sciences, University of Glasgow, Level 4, Sir Graeme Davis Bldg., 120 University Pl., Glasgow G12 8QQ, United Kingdom, or at iain.mc-innes@glasgow.ac.uk; or to Dr. Schett at the Department of Internal Medicine 3, University of Erlangen–Nuremberg, Krankenhausstr. 12, 91054 Erlangen, Germany, or at georg.schett@uk-erlangen.de.

N Engl J Med 2011;365:2205-19.

Copyright © 2011 Massachusetts Medical Society.

(QKRAA) in the HLA-DRB1 region, termed the shared epitope, confer particular susceptibility.⁶ These findings suggest that some predisposing T-cell repertoire selection, antigen presentation, or alteration in peptide affinity has a role in promoting autoreactive adaptive immune responses. Other possible explanations for the link between rheumatoid arthritis and the shared epitope include molecular mimicry of the shared epitope by microbial proteins, increased T-cell senescence induced by shared epitope-containing HLA molecules, and a potential proinflammatory signaling function that is unrelated to the role of the shared epitope in antigen recognition.^{7,8}

Many other identified risk alleles in ACPA-positive rheumatoid arthritis consistently aggregate functionally with immune regulation (Table 1), implicating nuclear factor κ B (NF- κ B)-dependent signaling (e.g., TRAF1-C5 and c-REL) and T-cell stimulation, activation, and functional differentiation (e.g., PTPN22 and CTLA4).⁹⁻¹² Moreover, gene-gene interactions that increase disease risk, as described between HLA-DRB1 and PTPN22, exemplify the complexity of the net risk conferred by any given gene.¹³ Genetic risk factors for ACPA-negative disease appear to be no less important than those for ACPA-positive disease. However, they are less well established and involve different HLA alleles (e.g., HLA-DRB1*03), interferon regulatory factors (e.g., interferon response factor 5), and lectin-binding proteins (e.g., C-type lectin domain family 4 member A).³ This fundamental dichotomy in genetic risk on the basis of ACPA expression provides the first clear evidence that a molecular taxonomy for “the rheumatoid arthritis syndrome” is feasible. Patients with ACPA-positive disease have a less favorable prognosis than those with ACPA-negative disease, which suggests that such molecular subsets are clinically useful.

Findings from studies of gene-environment interactions complement these observations. Smoking and other forms of bronchial stress (e.g., exposure to silica) increase the risk of rheumatoid arthritis among persons with susceptibility HLA-DR4 alleles.¹⁴ Moreover, smoking and HLA-DRB1 alleles synergistically increase one's risk of having ACPA.¹⁵ Unifying these observations is the finding that environmental stressors of pulmonary and other barrier tissues may promote post-translational modifications, through peptidyl arginine deiminase, type IV (PADI4), that result in

quantitative or qualitative alteration in citrullination of mucosal proteins.

Loss of tolerance to such neoepitopes elicits an ACPA response (which can be detected with a diagnostic anti-cyclic citrullinated peptide [CCP] assay) (Fig. 1).^{16,17} Several citrullinated self-proteins are recognized in anti-CCP assays, including α -enolase, keratin, fibrinogen, fibronectin, collagen, and vimentin. Characterization of subsets of seropositive patients to elicit true disease autoantigens is ongoing. An estimated 43 to 63% of patients with ACPA-positive rheumatoid arthritis are seropositive for citrullinated α -enolase, which is strongly associated with HLA-DRB1*04, PTPN22, and smoking.¹⁸ Similar interactions are reported for citrullinated vimentin and fibrinogen epitopes.¹⁹

Infectious agents (e.g., Epstein-Barr virus, cytomegalovirus, proteus species, and *Escherichia coli*) and their products (e.g., heat-shock proteins) have long been linked with rheumatoid arthritis, and although unifying mechanisms remain elusive, some form of molecular mimicry is postulated.^{20,21} The formation of immune complexes during infection may trigger the induction of rheumatoid factor, a high-affinity autoantibody against the Fc portion of immunoglobulin, which has long served as a diagnostic marker of rheumatoid arthritis and is implicated in its pathogenesis. Furthermore, rheumatoid arthritis appears to be associated with periodontal disease: *Porphyromonas gingivalis* expresses PADI4, which is capable of promoting citrullination of mammalian proteins.²² Finally, the gastrointestinal microbiome is now recognized to influence the development of autoimmunity in articular models, and specific (and potentially tractable) clinical bacterial signatures that are associated with autoantibody-positive rheumatoid arthritis are emerging.²³

The greater risk of rheumatoid arthritis among women than among men has long been recognized. The onset of rheumatoid arthritis is also associated with adverse life events. Molecular explanations for such phenomena are emerging from animal models of inflammation, which show a link between the hypothalamic-pituitary-adrenal axis and cytokine production.²⁴ The central nervous system is normally involved in immune regulation and homeostasis, and neuroimmunologic interactions regulate disease development in rodent models of arthritis. Such effects may operate locally (several neurotransmitters are expressed in synovitis in rheumatoid arthritis) or centrally

Table 1. Candidate Genes with Single-Nucleotide Polymorphisms (SNPs) Linked to Rheumatoid Arthritis and Their Potential Function in Pathogenesis.*

Candidate Gene and Pathway	SNP Locus	Function Relevant to Pathogenesis
T-cell activation		
<i>HLA-DRB1</i> †	6p21	HLA DRB1 allele (also known as the shared epitope) involved in MHC molecule–based antigen presentation and responsible for self-peptide selection and T-cell repertoire; first discovered and still by far the strongest genetic link to rheumatoid arthritis
<i>PTPN22</i>	1p13.2	Lymphocyte-specific nonreceptor tyrosine phosphatase involved in regulation of activation threshold of lymphocytes; second genetic link described in rheumatoid arthritis
<i>AFF3</i>	2q11.2	Transcription factor for lymphoid development
<i>CD28</i>	2q33.2	Costimulatory molecule for T-cell activation
<i>CD40</i>	20q13.12	Costimulatory molecule that enhances interactions between T and B cells and increases auto-antibody production
<i>CTLA4</i>	2q33.2	Costimulation suppressor that regulates interactions between T cells and antigen-presenting cells
<i>IL2RA</i>	10p15.1	High-affinity receptor for interleukin-2 on lymphocyte subsets
<i>IL2</i>	4q27	Cytokine that regulates activation of T cells, particularly regulatory T cells
<i>IL-21</i>	4q27	Cytokine that regulates differentiation of T cells, particularly Th17, and activation of B cells
<i>PRKCQ</i>	10p15.1	Member of the protein kinase C family that regulates T-cell and macrophage activation
<i>STAT4</i>	2q32.3	Transducer of cytokine signals that regulate proliferation, survival, and differentiation of lymphocytes
<i>TAGAP</i>	6q25.3	Rho-GTPase enzyme involved in T-cell activation
NF-κB pathway		
<i>REL</i>	2p16.1	Proto-oncogene member of the NF-κB family that regulates leukocyte activation and survival
<i>TNFAIP3</i>	6q23.3	Signaling protein and negative regulator of TNF-α–induced NF-κB activation
<i>TRAF1</i>	9q33.1	Regulator of TNF-α–receptor superfamily signaling (e.g., to NF-κB and JNK)
Other pathways		
<i>BLK</i>	8p23.1	B-lymphoid tyrosine kinase involved in B-cell receptor signaling and B-cell development
<i>CCL21</i>	9q13.3	Chemokine implicated in germinal-center formation
<i>FCGR2A</i>	1q23.2	Low-affinity IgG Fc receptor that regulates macrophage and neutrophil activation and immune-complex clearance
<i>PADI4</i>	1p36.2	Enzyme that converts arginine to citrulline, creating autoantigens in rheumatoid arthritis
<i>PRDM1</i>	6q21	Protein that acts as a repressor of β-interferon gene expression
<i>TNFRSF14</i>	1p36.32	TNF-α–receptor superfamily member with proinflammatory activity

* GTPase denotes guanosine triphosphatase, JNK Jun N-terminal kinase, MHC major histocompatibility complex, NF-κB nuclear factor κB, Th17 type 17 helper T cells, and TNF-α tumor necrosis factor α.

† Different *HLA-DRB1* alleles, not only the shared epitope, are associated with rheumatoid arthritis and with distinct immune responses to citrullinated antigens. In addition, *HLA-DP* and *HLA-DQ* loci (outside the *HLA-DRB1* region) have been associated with rheumatoid arthritis.

(cytokines are rapidly up-regulated in the hypothalamus during peripheral inflammation). Translation of these observations to effective treatment of rheumatoid arthritis is challenging.

Critical issues remain unresolved. Autoantibodies, such as rheumatoid factor and ACPA, are

often (but not always) detected in patients before the development of arthritis (prearticular phase of rheumatoid arthritis); in some series, autoantibody levels have increased and there has been evidence of epitope spreading as the onset of disease approaches.²⁵ Why the systemic loss of toler-

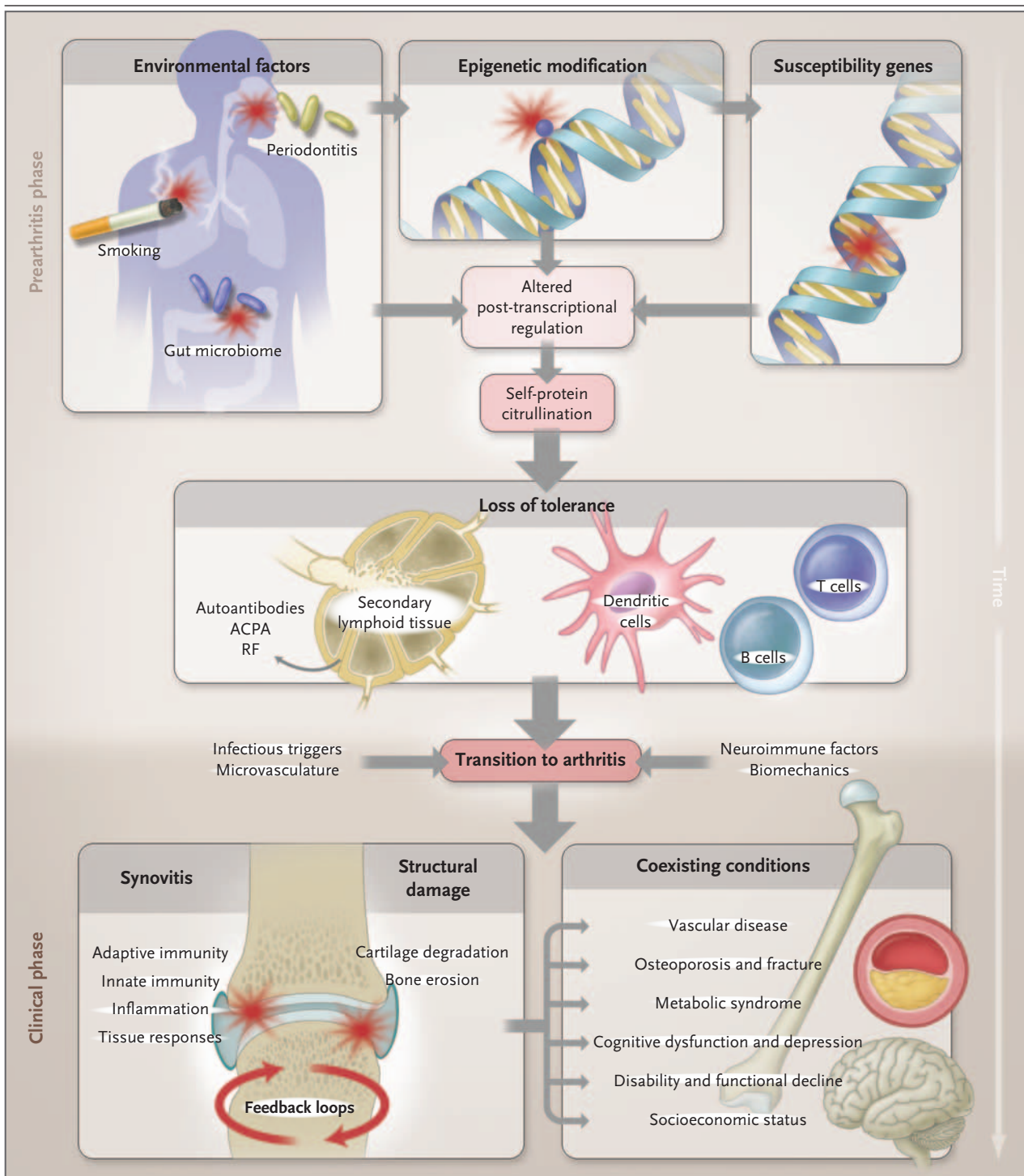


Figure 1. Multistep Progression to the Development of Rheumatoid Arthritis.

Environment–gene interactions described in the text promote loss of tolerance to self-proteins that contain a citrulline residue, which is generated by post-translational modification. This anticitrulline response can be detected in T-cell and B-cell compartments and is probably initiated in secondary lymphoid tissues or bone marrow. Thereafter, localization of the inflammatory response occurs in the joint by virtue of poorly understood mechanisms that probably involve microvascular, neurologic, biomechanical, or other tissue-specific pathways. Synovitis is initiated and perpetuated by positive feedback loops and in turn promotes systemic disorders that make up the syndrome of rheumatoid arthritis. ACPA denotes anti–citrullinated protein antibody, and RF rheumatoid factor.

ance is linked to a localized onset of inflammation in the joint is still unclear (transitional phase of rheumatoid arthritis). It is possible that biologic features of the targeted autoantigen (e.g., regulation of cellular metabolism in the case of α -enolase and glucose-6-phosphatase) may contribute. Other possible factors include local microvascular, neurologic, biomechanical, and microtrauma-related mechanisms (Fig. 1).

SYNOVIAL IMMUNOLOGIC PROCESSES AND INFLAMMATION

Synovitis occurs when leukocytes infiltrate the synovial compartment. Leukocyte accumulation primarily reflects migration rather than local proliferation. Cell migration is enabled by endothelial activation in synovial microvessels, which increases the expression of adhesion molecules (including integrins, selectins, and members of the immunoglobulin superfamily) and chemokines. Accordingly, neoangiogenesis, which is induced by local hypoxic conditions and cytokines, and insufficient lymphangiogenesis, which limits cellular egress, are characteristic features of early and established synovitis.^{26,27} These microenvironmental changes, combined with profound synovial architectural reorganization and local fibroblast activation, permit the buildup of synovial inflammatory tissue in rheumatoid arthritis (Fig. 2).

ADAPTIVE IMMUNE PATHWAYS

The genetics of rheumatoid arthritis and the presence of autoantibodies clearly place adaptive immunity at the center of early pathogenesis. However, even though T cells are abundant in the synovial milieu, the functional role of T cells remains insufficiently understood. Direct targeting of T cells by cyclosporine or T-cell–depleting therapeutics has shown limited or no efficacy.²⁸ This finding may reflect “broad spectrum” deletion of regulatory as well as effector T cells and suggests the need to target T-cell subsets. The synovium in rheumatoid arthritis contains abundant myeloid cells and plasmacytoid dendritic cells that express cytokines (interleukin-12, 15, 18, and 23), HLA class II molecules, and costimulatory molecules that are necessary for T-cell activation and antigen presentation.^{29,30} Moreover, the use of abatacept (a fusion protein containing cytotoxic T-lymphocyte–associated antigen 4 and the FC fragment of IgG1) to disrupt antigen presentation by blocking T-cell costimulation (through the interaction of

CD28 with CD80 or CD86) is efficacious in rheumatoid arthritis. Autoreactive T cells against citrullinated self-proteins have been identified. Synovial T-cell oligoclonality, germinal-center reactions, and B-cell hypermutation suggest ongoing local antigen-specific, T-cell–mediated B-cell help.^{31,32}

Although rheumatoid arthritis is conventionally considered to be a disease that is mediated by type 1 helper T cells, attention has increasingly focused on the role of type 17 helper T cells (Th17), a subset that produces interleukin-17A, 17F, 21, and 22 and tumor necrosis factor α (TNF- α)^{33,34} (Table 2 and the Supplementary Appendix, available with the full text of this article at NEJM.org). Macrophage-derived and dendritic-cell–derived transforming growth factor β and interleukin-1 β , 6, 21, and 23 provide a milieu that supports Th17 differentiation and suppresses differentiation of regulatory T cells, thus shifting T-cell homeostasis toward inflammation. Interleukin-17A, which synergizes with TNF- α to promote activation of fibroblasts and chondrocytes, is currently being targeted in clinical trials.³⁵ Regulatory (forkhead box P3 [Foxp3+]) T cells that are detected in tissues from patients with rheumatoid arthritis appear to have limited functional capability.³⁶ This imbalance between Th17 and regulatory T cells may also reflect local TNF- α , which blocks the activity of regulatory T cells.³⁷ An additional pathogenic pathway comprises antigen-nonspecific, T-cell contact–mediated activation of macrophages and fibroblasts, operating through interactions between CD40 and CD40 ligand, CD200 and CD200 ligand, and intracellular adhesion molecule 1 and leukocyte-function–associated antigen 1.³⁸

Humoral adaptive immunity is integral to rheumatoid arthritis. Synovial B cells are mainly localized in T-cell–B-cell aggregates — indeed, some tissues have ectopic lymphoid follicles³⁹ — that are supported by the expression of factors that include a proliferation-inducing ligand (APRIL), B-lymphocyte stimulator (BLyS), and CC and CXC chemokines (e.g., CXC chemokine ligand 14 and CC chemokine ligand 21).⁴⁰ Plasmablasts and plasma cells are more widely distributed in the synovium and also in juxta-articular bone marrow. A pathogenic role for CD20+ B cells is confirmed by the efficacy of rituximab in rheumatoid arthritis.⁴¹ Because plasma cells are not targeted by anti-CD20 antibodies, and autoantibody levels are variably altered after treatment, these clinical observations suggest that the role of B cells and their progeny in the pathogenesis of rheuma-

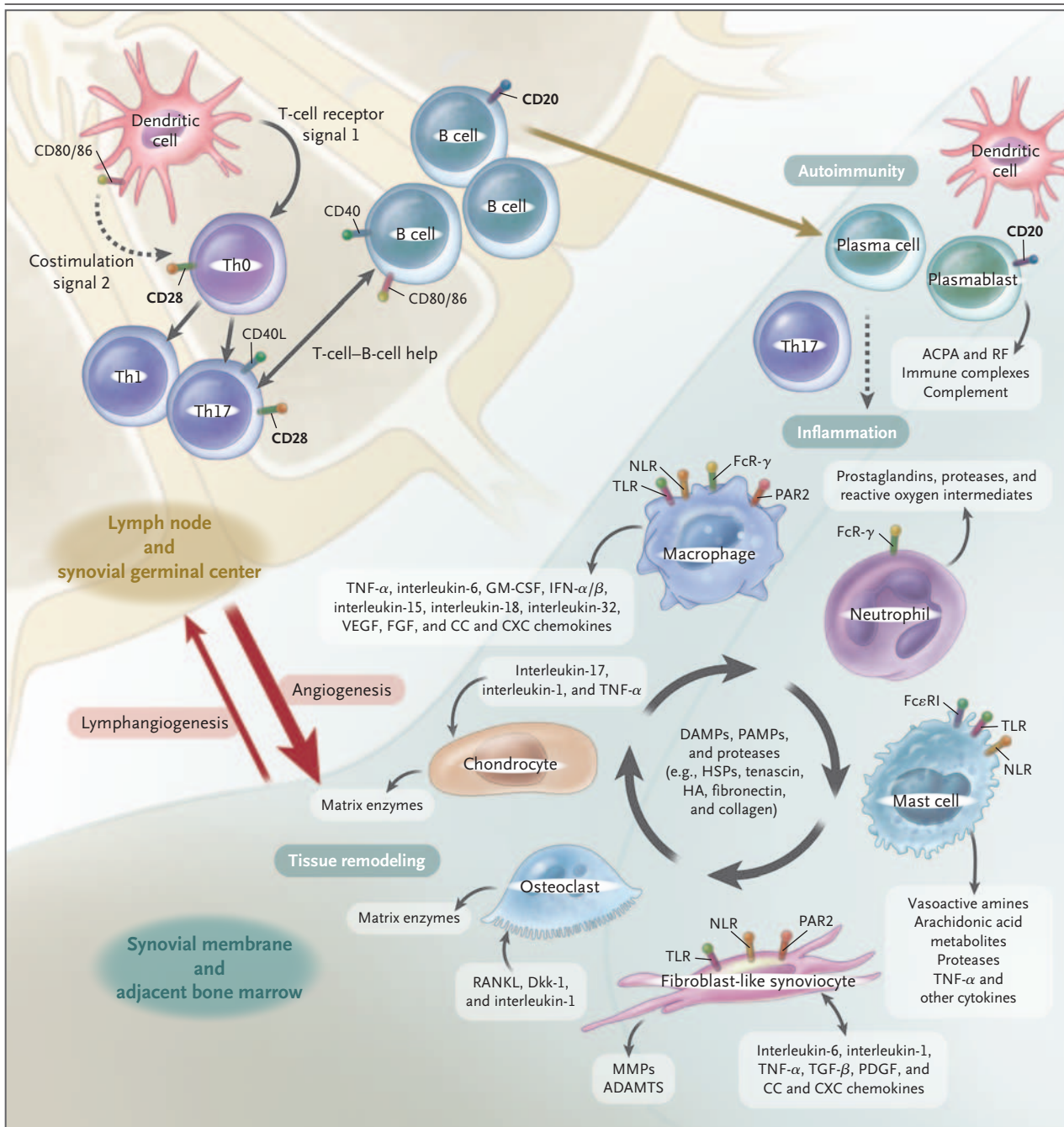


Figure 2. Adaptive and Innate Immune Processes within the Joint in Rheumatoid Arthritis.

The costimulation-dependent interactions among dendritic cells, T cells, and B cells are shown as occurring primarily in the lymph node; these events generate an autoimmune response to citrulline-containing self-proteins. In the synovial membrane and adjacent bone marrow, adaptive and innate immune pathways integrate to promote tissue remodeling and damage. Positive feedback loops mediated by the interactions shown among leukocytes, synovial fibroblasts, chondrocytes, and osteoclasts, together with the molecular products of damage, drive the chronic phase in the pathogenesis of rheumatoid arthritis. ADAMTS denotes a disintegrin and metalloprotease with thrombospondin-1-like domains, DAMP damage-associated molecular pattern, Dkk-1 dickkopf-1, FcR Fc receptor, FcεRI high-affinity IgE receptor, FGF fibroblast growth factor, GM-CSF granulocyte-macrophage colony-stimulating factor, HA hyaluronan, HSP heat-shock protein, IFN- α/β interferon- α/β , MMP matrix metalloproteinase, NLR nucleotide-binding oligomerization domain-like receptor, PAMP pathogen-associated molecular pattern, PAR2 protease-activated receptor 2, PDGF platelet-derived growth factor, RANKL receptor activator of nuclear factor κ B ligand, TGF- β transforming growth factor β , Th0 type 0 helper T cell, Th1 type 1 helper T cell, Th17 type 17 helper T cell, TLR toll-like receptor, TNF- α tumor necrosis factor α , and VEGF vascular endothelial growth factor.

Table 2. Key Molecules and Signal Mediators Implicated in the Pathogenesis of Rheumatoid Arthritis.*

Molecule or Signal Mediator	Key Disease-Relevant Functions	Status†
Cytokines		
TNF- α	Activates leukocytes, endothelial cells, and synovial fibroblasts, inducing production of cytokines, chemokines, adhesion molecules, and matrix enzymes; suppression of regulatory T-cell function; activation of osteoclasts; and resorption of cartilage and bone; mediates metabolic and cognitive dysfunction	Approved drug
Interleukin-1 α and 1 β	Activate leukocytes, endothelial cells, and synovial fibroblasts; induce matrix-enzyme production by chondrocytes; activate osteoclasts; mediate fever; enhance glucose metabolism; and reduce cognitive function	Approved drug
Interleukin-6	Activates leukocytes and osteoclasts; is involved in B-lymphocyte differentiation; regulates lipid metabolism, acute-phase response, and anemia of chronic disease; and is implicated in hypothalamic–pituitary–adrenal axis dysfunction and fatigue	Approved drug
Interleukin-7 and 15	Promote and maintain T-cell and natural killer–cell activation and T-cell memory, block apoptosis, and maintain T-cell–macrophage cognate interactions	Phase 2 trial completed
Interleukin-17A and 17F	Act synergistically to enhance activation of synovial fibroblasts, chondrocytes, and osteoclasts	More than one phase 2 trial with positive results
Interleukin-18	Promotes activation of Th1, neutrophils, and natural killer cells	
Interleukin-21	Activates Th17 and B-cell subsets	
Interleukin-23	Expands Th17	
Interleukin-32	Activates cytokine production by several leukocytes and promotes osteoclast differentiation	
Interleukin-33	Activates mast cells and neutrophils	
Growth and differentiation factors		
BLyS and APRIL	Activate B cells and have a role in the maturation of B cells and enhancement of autoantibody production	In phase 2 trial
GM-CSF and M-CSF	Enhance differentiation of granulocyte and myeloid-lineage cells in the bone marrow and synovium	In phase 1 trial
RANKL	Promotes maturation and activation of osteoclasts	Phase 2 trial completed
Intracellular signaling molecules and transcription factors		
JAK	Tyrosine kinase that regulates cytokine-mediated leukocyte maturation and activation, cytokine production, and immunoglobulin production	More than one phase 2 trial with positive results
Syk	Tyrosine kinase that regulates immune-complex–mediated and antigen-mediated activation of B and T cells and other Fc receptor–bearing leukocytes	More than one phase 2 trial with positive results
PI3K	Mediates signals that drive proliferation and cell survival	Phase 1 trial planned
BTK	Plays important role in the activation of B cells, macrophages, mast cells, and neutrophils, through regulation of B-cell receptor and Fc receptor signaling as appropriate	Phase 1 trial planned
NF- κ B	Helps integrate inflammatory signaling and is important for cell survival	

* APRIL denotes a proliferation-inducing ligand, BLyS B-lymphocyte stimulator, BTK Bruton's tyrosine kinase, GM-CSF granulocyte–macrophage colony-stimulating factor, JAK Janus kinase, M-CSF macrophage colony-stimulating factor, PI3K phosphatidylinositol 3-kinase, RANKL receptor activator of NF- κ B ligand, Syk spleen tyrosine kinase, and Th1 type 1 helper T cells.

† Status indicates the investigational status of agents targeting the molecule or signal mediator. Approved drugs have been approved by the Food and Drug Administration and European Medicines Agency for use in patients with rheumatoid arthritis. Trials are clinical trials that are ongoing or have been completed; more information on the trials is provided in the Supplementary Appendix.

toid arthritis goes beyond autoantibody production to include autoantigen presentation and cytokine production (e.g., interleukin-6, TNF- α , and lymphotoxin- β).

ACTIVATION OF THE INNATE IMMUNE SYSTEM

A variety of innate effector cells, including macrophages, mast cells, and natural killer cells, are found in the synovial membrane, whereas neutro-

phils reside mainly in synovial fluid. Macrophage colony-stimulating factor, granulocyte colony-stimulating factor, and granulocyte-macrophage colony-stimulating factor (GM-CSF) enhance maturation of these cells, their efflux from the bone marrow, and trafficking to the synovium.⁴² In particular, macrophages are central effectors of synovitis; clinically effective biologic agents consistently reduce macrophage infiltration in the synovium.⁴³ Macrophages act through release of cytokines (e.g., TNF- α and interleukin-1, 6, 12, 15, 18, and 23), reactive oxygen intermediates, nitrogen intermediates, production of prostanoids and matrix-degrading enzymes, phagocytosis, and antigen presentation.

This pattern of expression of proinflammatory cytokines and inducible nitric oxide synthase suggests a predominant M1 macrophage phenotype. Macrophages are activated by toll-like receptors (TLRs) (e.g., TLR 2/6, 3, 4, and 8) and nucleotide-binding oligomerization domain (NOD)-like receptors (NLRs) that recognize a range of pathogen-associated molecular patterns and damage-associated molecular patterns that potentially include bacterial, viral, and putative endogenous ligands.⁴⁴ Macrophage activation is also driven by cytokines, cognate interactions with T cells, immune complexes, lipoprotein particles and liver X-receptor agonists (e.g., oxysterols, oxidized low-density lipoprotein [LDL], and serum amyloid A-rich high-density lipoprotein [HDL]), and the protease-rich microenvironment through protease-activated receptor 2.⁴⁵ Moreover, microRNA species (e.g., microRNA-155) have been implicated in the regulation of synovial cytokine expression.^{46,47}

Neutrophils contribute to synovitis by synthesizing prostaglandins, proteases, and reactive oxygen intermediates.⁴⁸ Mast cells that produce high levels of vasoactive amines, cytokines, chemokines, and proteases, through ligation of TLR, suppression of tumorigenicity 2 (ST2), Fc receptor γ , and Fc receptor ϵ , also play a role.^{49,50} A fraction of ACPA belongs to the IgE class, which may elicit mast-cell activation through Fc receptor ϵ .⁵¹ These findings, which provide evidence that activation of the innate immune pathway contributes to synovitis, could lead to the development of treatments that modulate TLR-dependent, NLR-dependent, and inflammasome-dependent pathways.

CYTOKINES AND INTRACELLULAR SIGNALING PATHWAYS

Cytokine production that arises from numerous synovial cell populations is central to the patho-

genesis of rheumatoid arthritis. Cytokine patterns may shift over time; early rheumatoid arthritis has an apparently distinct cytokine profile, involving the expression of interleukin-4, 13, and 15,⁵² that subsequently evolves in chronic disease. TNF- α plays a fundamental role through activation of cytokine and chemokine expression, expression of endothelial-cell adhesion molecules, protection of synovial fibroblasts, promotion of angiogenesis, suppression of regulatory T cells, and induction of pain.^{53,54} Similarly, interleukin-6 drives local leukocyte activation and autoantibody production but mediates systemic effects that promote acute-phase responses, anemia, cognitive dysfunction, and lipid-metabolism dysregulation. The central role of these two cytokines has been confirmed by successful therapeutic blockade of membrane and soluble TNF- α and the interleukin-6 receptor in patients with rheumatoid arthritis (Table 3).

Interleukin-1 family cytokines (e.g., interleukin-1 α , 1 β , 18, and 33) are abundantly expressed in rheumatoid arthritis. They promote activation of leukocytes, endothelial cells, chondrocytes, and osteoclasts.^{55,56} However, clinical benefits after interleukin-1 inhibition have been modest. Although this paradox is not fully understood, it may reflect functional redundancy in the canonical TLR and interleukin-1-receptor signaling pathways. Other efforts to target cytokines (e.g., interleukin-17 and 17 receptor, BLYS, APRIL, and GM-CSF) with the use of biologic approaches are ongoing.^{55,56} The range of available therapeutics based on the biologic characteristics of synovial cytokines will probably expand (Table 2).

Elucidation of the complex intracellular signaling molecules (particularly kinases) that regulate cytokine-receptor-mediated functions may facilitate the development of specific small-molecule inhibitors. Although many intracellular signaling pathways are active in the synovium, clues to those with hierarchical importance have been provided by clinical trials. Positive clinical outcomes in phase 2 studies of the Janus kinase (JAK) 1 and 3 inhibitor tofacitinib implicate JAK pathways that mediate the function of several cytokines, interferons, and growth factors in the pathogenesis of rheumatoid arthritis^{57,58} (Table 2). Moreover, inhibition of spleen tyrosine kinase by fostamatinib, which is effective in some subgroups of patients, is commensurate with its role in the function of B-cell and Fc receptors.^{59,60} Other intracellular targets, including phosphatidylinositol 3-kinase, Bruton's tyrosine kinase, and other com-

Table 3. Approved Immune-Targeted Therapies in Rheumatoid Arthritis.*

Agent	Class	Target	Structure	Comments
Adalimumab	Cytokine inhibitor	TNF- α	Human monoclonal antibody	TNF- α blockers were the first biologic agents approved for the treatment of rheumatoid arthritis; TNF- α blockade has become a central strategy of targeted antiinflammatory therapy in the disease.
Certolizumab pegol	Cytokine inhibitor	TNF- α	Pegylated humanized Fab' fragment of an anti-TNF- α monoclonal antibody	
Etanercept	Cytokine inhibitor	TNF- α	TNF- α receptor-Fc fusion	
Golimumab	Cytokine inhibitor	TNF- α	Human monoclonal antibody	
Infliximab	Cytokine inhibitor	TNF- α	Chimeric monoclonal antibody	
Tocilizumab	Cytokine inhibitor	Interleukin-6 receptor	Humanized monoclonal antibody	This agent is considered the second major advance in cytokine blockade in rheumatoid arthritis; it has profound effects on systemic features, acute-phase response, and synovitis.
Anakinra	Cytokine inhibitor	Interleukin-1	Interleukin-1 receptor antagonist	Despite good antiinflammatory activity in inflammatory disease (e.g., the Muckle-Wells syndrome, Still's disease, and gout), this agent has had only limited efficacy in rheumatoid arthritis.
Rituximab	Cell-depleting agent	CD20	Chimeric monoclonal antibody	This is the only approved cell-depleting agent for rheumatoid arthritis; its use has reinforced the role of adaptive immunity, particularly humoral immune responses, in the disease.
Abatacept	Costimulation blocker	CD80 and CD86	CTLA4-Ig fusion protein	This agent disrupts the interaction of antigen-presenting cells with T cells, an effect that confirms the link between innate and adaptive immune responses in rheumatoid arthritis.

* CTLA4-Ig denotes cytotoxic T-lymphocyte-associated antigen 4 and the Fc fragment of IgG1.

ponents of the NF- κ B pathway, offer intriguing possibilities for therapeutic strategies. In contrast, despite a strong preclinical rationale, the targeting of p38 mitogen-activated protein kinase has been disappointing in clinical settings, which probably indicates that the molecular signaling network in rheumatoid arthritis has functional redundancy.

MESENCHYMAL TISSUE RESPONSES

The normal synovium contains mesenchymal-derived, fibroblast-like synoviocytes (FLSs) and resident macrophages. In rheumatoid arthritis, the membrane lining is expanded, and FLSs assume a semiautonomous phenotype characterized by anchorage independence, loss of contact inhibition, and the expression of high levels of disease-relevant cytokines and chemokines, adhesion molecules, matrix metalloproteinases (MMPs), and tissue inhibitors of metalloproteinases (TIMPs).⁶¹ FLSs thereby contribute directly to local cartilage destruction and the chronicity of synovial inflam-

mation, and they promote a permissive microenvironment that sustains T-cell and B-cell survival and adaptive immune organization.⁶²

The molecular mechanisms that sustain synovial hyperplasia are incompletely understood. The increased proliferative capacity of FLSs is not explanatory. A more likely possibility is altered resistance to apoptosis, which is mediated by diverse pathways, including mutations of the tumor-suppressor gene p53⁶³; expression of stress proteins (e.g., heat-shock protein 70), which foster the survival of FLSs⁶⁴; and modulation of the function of the endoplasmic reticulum by synoviolin, an E3 ubiquitin ligase that regulates the balance of cell proliferation and apoptosis.⁶⁵ Synoviolin negatively regulates p53 expression and its biologic functions. In addition, cytokine-induced activation of the NF- κ B pathway in FLSs favors survival after ligation of TNF- α receptor. Methylation and acetylation of cell-cycle regulatory genes and expression of microRNAs may be critical factors.⁶⁶

Synovial hyperplasia could also reflect increased influx of mesenchymal cells. In a mouse model of arthritis with severe combined immunodeficiency, FLSs were shown to migrate and thereby promote articular involvement.⁶⁷ A crucial advance has been the elucidation of the molecular pathways that sustain integral membrane structure in rheumatoid arthritis. Cadherin-11 and β -catenin mediate FLS-homotypic interactions that are essential for membrane formation and for subsequent inflammation.⁶⁸

STRUCTURAL DAMAGE

CARTILAGE DAMAGE

A hyperplastic synovium is the major contributor to cartilage damage in rheumatoid arthritis. Loss of the normally protective effects of synovium (e.g., reduced expression of lubricin)⁶⁹ alter the protein-binding characteristics of the cartilage surface, promoting FLS adhesion and invasion. FLS synthesis of MMPs (particularly MMP-1, 3, 8, 13, 14, and 16) promotes disassembly of the type II collagen network, a process that alters glycosaminoglycan content and water retention and leads directly to biomechanical dysfunction. MMP-14 appears to be the predominant MMP expressed by FLSs to degrade the collagenous cartilage matrix.⁷⁰ Other matrix enzymes (e.g., ADAMTS 5) degrade aggrecan and thus further diminish cartilage integrity.

Endogenous enzyme inhibitors, such as TIMPs, fail to reverse this destructive cascade. Moreover, articular cartilage itself has limited regenerative potential. Chondrocytes physiologically regulate matrix formation and cleavage: under the influence of synovial cytokines (particularly interleukin-1 and 17A) and reactive nitrogen intermediates, cartilage is progressively deprived of chondrocytes, which undergo apoptosis. These processes ultimately lead to the destruction of the surface cartilage and the radiographic appearance of joint-space narrowing.

BONE EROSION

Bone erosion occurs rapidly (affecting 80% of patients within 1 year after diagnosis⁷¹) and is associated with prolonged, increased inflammation.⁷² Synovial cytokines, particularly macrophage colony-stimulating factor and receptor activator of NF- κ B ligand (RANKL), promote osteoclast dif-

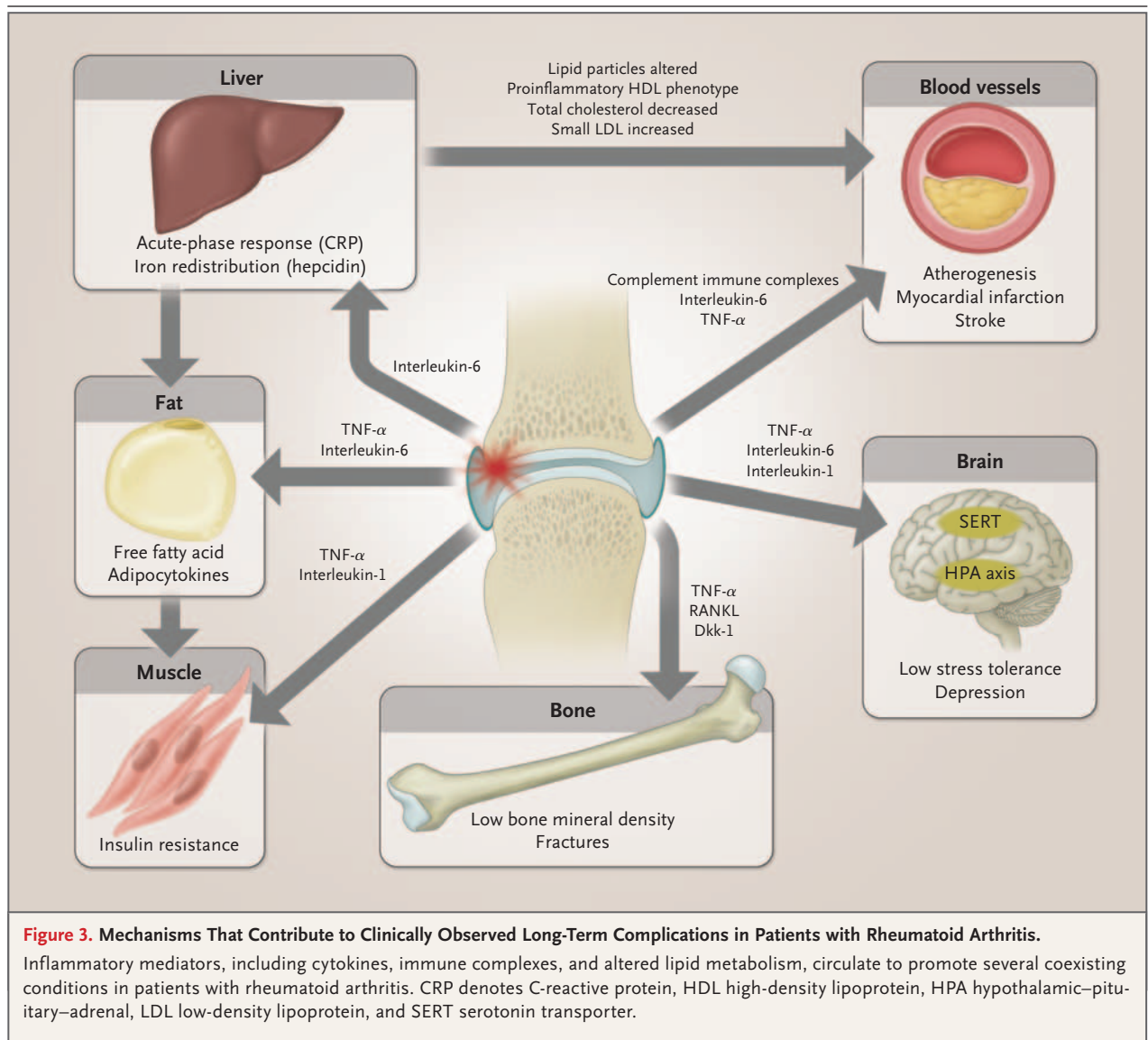
ferentiation and invasion of the periosteal surface adjacent to articular cartilage.⁷³ TNF- α and interleukin-1, 6, and potentially 17 amplify osteoclast differentiation and activation.⁷⁴ Moreover, clinical inhibition of TNF- α , interleukin-6, and RANKL retards erosion in rheumatoid arthritis. Notably, blockade of RANKL acts only on bone, with no effect on inflammation or cartilage degradation.⁷⁵ Osteoclasts have the acidic enzymatic machinery necessary to destroy mineralized tissues, including mineralized cartilage and subchondral bone; destruction of these tissues leads to deep resorption pits, which are filled by inflammatory tissue.

Mechanical factors predispose particular sites to erosion. Thus, “mechanically vulnerable” sites such as the second and third metacarpals are prone to erosive changes.⁷⁶ Breach of cortical bone permits synovial access to the bone marrow, which causes inflammation of the bone marrow (osteitis as observed on magnetic resonance imaging), in which T-cell and B-cell aggregates gradually replace marrow fat.⁷⁷ It is unclear whether these lesions occur in conjunction with synovium-induced erosions or whether osteitis necessarily or independently precedes erosion.⁷⁸ It is conceivable that rheumatoid arthritis starts in the bone marrow and subsequently involves the synovial membrane.

Eroded periarticular bone shows little evidence of repair in rheumatoid arthritis, unlike bone in other inflammatory arthropathies. Cytokine-induced mediators, such as dickkopf-1 and frizzled-related protein 1, potentially inhibit the differentiation of mesenchymal precursors into chondroblasts and osteoblasts (CD271+).⁷⁹ Mesenchymal stem cells, which have the potential to differentiate into adipocytes, chondrocytes, and osteoblasts, can be detected in the synovium.^{80,81} However, the biologic characteristics of synovial mesenchymal stem cells, their relationship to FLSs and other stromal cells, and the effect of local inflammation on their activities remain unknown, and an understanding of these factors will crucially inform reparative therapeutic strategies.

SYSTEMIC CONSEQUENCES OF RHEUMATOID ARTHRITIS

Rheumatoid arthritis is associated with increased rates of cardiovascular illness (standardized mortality rate, approximately 1.5), including myocar-



dial infarction, cerebrovascular events, and heart failure (Fig. 3).⁸²⁻⁸⁴ These increased rates are not explained by traditional risk factors,^{85,86} use of glucocorticoids or nonsteroidal antiinflammatory drugs, or shared genetic features. Circulating inflammatory pathways that are implicated include cytokines (interleukin-6 and TNF- α), acute-phase reactants, immune complexes, and altered lipid particles (e.g., serum amyloid A-rich HDL) that increase endothelial activation and potentially render atheromatous plaques unstable.⁸⁷ Increased levels of acute-phase reactants are an independent cardiovascular risk factor in the

general population.⁸⁸ Cytokines also make muscle and adipose tissues insulin-resistant, resulting in an “inflammatory metabolic” syndrome. Moreover, vascular risk is increased early in the course of rheumatoid arthritis, perhaps reflecting subclinical inflammation in the prearticular phase.^{89,90}

Lipid biochemical features are intimately, and reciprocally, linked to inflammation to ensure metabolically efficient host defense. In consequence, active rheumatoid arthritis is associated with reduced serum levels of total, HDL, and LDL cholesterol, which may then be paradoxically el-

evated by effective therapy.⁹¹ Nevertheless, effective therapeutics decrease cardiovascular risk and favorably modify vascular physiology.⁹²⁻⁹⁴ Statin drugs also reduce surrogates of vascular risk and inflammatory factors in patients with rheumatoid arthritis, and risk adjustment for statin use in patients with rheumatoid arthritis is now advocated.⁹⁵

Inflammation in rheumatoid arthritis also affects the brain (fatigue and reduced cognitive function), liver (elevated acute-phase response and anemia of chronic disease), lungs (inflammatory and fibrotic disease), exocrine glands (secondary Sjögren's syndrome), muscles (sarcopenia), and bones (osteoporosis). Osteoporosis affects the axial and appendicular skeleton, with only a modest elevation of the acute-phase response or subclinical inflammation, and probably occurs before the onset of articular disease.⁹⁶⁻⁹⁸ Effective anti-inflammatory treatment retards bone loss and suppresses the high rate of systemic bone resorption, as measured with the use of bone-turnover biomarkers.

The risk of lymphoma is increased among patients with rheumatoid arthritis⁹⁹ and is strongly associated with inflammatory disease activity; sustained disease activity confers the highest risk.¹⁰⁰ Clonal selection of B cells, disturbed immune surveillance due to impaired activity of regulatory T cells, and impaired function of natural killer cells are postulated mechanisms.

The higher rates of lung cancer among patients with rheumatoid arthritis than among other persons may be explained in part by the association between smoking and rheumatoid arthritis.

However, inflammation increases the risk of lung cancer independently of smoking, perhaps because of the long-known extraarticular effects of rheumatoid arthritis on fibrotic remodeling of interstitial lung tissue.

CONCLUSIONS

The pathogenetic advances described herein have paralleled the introduction of new, effective therapies and remarkable improvement in clinical outcomes. Severe disease manifestations, such as vasculitis, nodule formation, scleritis, and amyloidosis, that are associated with persistent, uncontrolled inflammation have become rare. A rich pipeline of biologic and small-molecule agents, and of potential clinical biomarkers, exists that will add to our therapeutic armamentarium. In time, this should render remission achievable in increasing numbers of patients.

However, much remains to be resolved. We need to understand the factors that lead to loss of tolerance and that cause localization of inflammation in the joint. We need to find ways to promote immunologic resolution or homeostasis and repair of damaged joints. We must elucidate the mechanisms driving the various systemic disorders that contribute substantially to reductions in the quality and length of life. Ultimately, we must strive to develop curative and preventive therapeutics that will transform the notion of rheumatoid arthritis as a chronic disease.

Disclosure forms provided by the authors are available with the full text of this article at NEJM.org.

REFERENCES

1. Firestein GS. Evolving concepts of rheumatoid arthritis. *Nature* 2003;423:356-61.
2. Aletaha D, Neogi T, Silman AJ, et al. 2010 Rheumatoid arthritis classification criteria: an American College of Rheumatology/European League Against Rheumatism collaborative initiative. *Ann Rheum Dis* 2010;69:1580-8. [Erratum, *Ann Rheum Dis* 2010;69:1892.]
3. Klareskog L, Rönnelid J, Lundberg K, Padyukov L, Alfredsson L. Immunity to citrullinated proteins in rheumatoid arthritis. *Annu Rev Immunol* 2008;26:651-75.
4. MacGregor AJ, Snieder H, Rigby AS, et al. Characterizing the quantitative genetic contribution to rheumatoid arthritis using data from twins. *Arthritis Rheum* 2000;43:30-7.
5. Wellcome Trust Case Control Consortium. Genome-wide association study of 14,000 cases of seven common diseases and 3,000 shared controls. *Nature* 2007;447:661-78.
6. Gregersen PK, Silver J, Winchester RJ. The shared epitope hypothesis: an approach to understanding the molecular genetics of susceptibility to rheumatoid arthritis. *Arthritis Rheum* 1987;30:1205-13.
7. Weyand CM, Goronzy JJ. Disease-associated human histocompatibility leukocyte antigen determinants in patients with seropositive rheumatoid arthritis: functional role in antigen-specific and allogeneic T cell recognition. *J Clin Invest* 1990;85:1051-7.
8. De Almeida DE, Ling S, Pi X, Hartmann-Scraggs AM, Pumpens P, Holoshitz J. Immune dysregulation by the rheumatoid arthritis shared epitope. *J Immunol* 2010;185:1927-34.
9. Begovich AB, Carlton VE, Honigberg LA, et al. A missense single-nucleotide polymorphism in a gene encoding a protein tyrosine phosphatase (PTPN22) is associated with rheumatoid arthritis. *Am J Hum Genet* 2004;75:330-7.
10. Kurreeman FA, Padyukov L, Marques RB, et al. A candidate gene approach identifies the TRAF1/C5 region as a risk factor for rheumatoid arthritis. *PLoS Med* 2007;4(9):e278. [Erratum, *PLoS Med* 2007;4(12):e358.]
11. Plenge RM, Cotsapas C, Davies L, et al. Two independent alleles at 6q23 associated with risk of rheumatoid arthritis. *Nat Genet* 2007;39:1477-82.

12. Remmers EF, Plenge RM, Lee AT, et al. *STAT4* and the risk of rheumatoid arthritis and systemic lupus erythematosus. *N Engl J Med* 2007;357:977-86.
13. Kallberg H, Padyukov L, Plenge RM, et al. Gene-gene and gene-environment interactions involving HLA-DRB1, PTPN22, and smoking in two subsets of rheumatoid arthritis. *Am J Hum Genet* 2007;80:867-75.
14. Symmons DP, Bankhead CR, Harrison BJ, et al. Blood transfusion, smoking, and obesity as risk factors for the development of rheumatoid arthritis: results from a primary care-based incident case-control study in Norfolk, England. *Arthritis Rheum* 1997;40:1955-61.
15. Klareskog L, Stolt P, Lundberg K, et al. A new model for an etiology of rheumatoid arthritis: smoking may trigger HLA-DR (shared epitope)-restricted immune reactions to autoantigens modified by citrullination. *Arthritis Rheum* 2006;54:38-46.
16. Vincent C, de Keyser F, Masson-Besière C, Sebbag M, Veys E, Serre G. Antiperinuclear factor compared with the so called "antikeratin" antibodies and antibodies to human epidermis filaggrin, in the diagnosis of arthritides. *Ann Rheum Dis* 1999;58:42-8.
17. De Rycke L, Peene I, Hoffman IE, et al. Rheumatoid factor and anticitrullinated protein antibodies in rheumatoid arthritis: diagnostic value, associations with radiological progression rate, and extra-articular manifestations. *Ann Rheum Dis* 2004;63:1587-93.
18. Mahdi H, Fisher BA, Källberg H, et al. Specific interaction between genotype, smoking and autoimmunity to citrullinated alpha-enolase in the etiology of rheumatoid arthritis. *Nat Genet* 2009;41:1319-24.
19. van der Woude D, Rantapää-Dahlqvist S, Ioan-Facsinay A, et al. Epitope spreading of the anti-citrullinated protein antibody response occurs before disease onset and is associated with the disease course of early arthritis. *Ann Rheum Dis* 2010;69:1554-61.
20. Auger I, Roudier J. A function for the QKRAA amino acid motif: mediating binding of DnaJ to DnaK: implications for the association of rheumatoid arthritis with HLA-DR4. *J Clin Invest* 1997;99:1818-22.
21. Kamphuis S, Kuis W, de Jager W, et al. Tolerogenic immune responses to novel T-cell epitopes from heat-shock protein 60 in juvenile idiopathic arthritis. *Lancet* 2005;366:50-6.
22. Wegner N, Wait R, Sroka A, et al. Peptidylarginine deiminase from *Porphyromonas gingivalis* citrullinates human fibrinogen and α -enolase: implications for autoimmunity in rheumatoid arthritis. *Arthritis Rheum* 2010;62:2662-72.
23. Scher JU, Ubeda C, Pillinger MH, et al. Characteristic oral and intestinal microbiota in rheumatoid arthritis (RA): a trigger for autoimmunity? *Arthritis Rheum* 2010;62:Suppl.1390. abstract.
24. Capellino S, Cosentino M, Wolff C, Schmidt M, Grifka J, Straub RH. Catecholamine-producing cells in the synovial tissue during arthritis: modulation of sympathetic neurotransmitters as new therapeutic target. *Ann Rheum Dis* 2010;69:1853-60.
25. Rantapää-Dahlqvist S, de Jong BA, Berglin E, et al. Antibodies against cyclic citrullinated peptide and IgA rheumatoid factor predict the development of rheumatoid arthritis. *Arthritis Rheum* 2003;48:2741-9.
26. Szekanecz Z, Pakozdi A, Szentpetery A, Besenyei T, Koch AE. Chemokines and angiogenesis in rheumatoid arthritis. *Front Biosci (Elite Ed)* 2009;1:44-51.
27. Polzer K, Baeten D, Soleiman A, et al. Tumour necrosis factor blockade increases lymphangiogenesis in murine and human arthritic joints. *Ann Rheum Dis* 2008;67:1610-6.
28. Panayi GS. Even though T-cell-directed trials have been of limited success, is there reason for optimism? *Nat Clin Pract Rheumatol* 2006;2:58-9.
29. Lebre MC, Jongbloed SL, Tas SW, Smeets TJ, McInnes IB, Tak PP. Rheumatoid arthritis synovium contains two subsets of CD83-DC-LAMP- dendritic cells with distinct cytokine profiles. *Am J Pathol* 2008;172:940-50.
30. Schröder AE, Greiner A, Seyfert C, Berek C. Differentiation of B cells in the nonlymphoid tissue of the synovial membrane of patients with rheumatoid arthritis. *Proc Natl Acad Sci U S A* 1996;93:221-5.
31. Cantaert T, Brouard S, Thurlings RM, et al. Alterations of the synovial T cell repertoire in anti-citrullinated protein antibody-positive rheumatoid arthritis. *Arthritis Rheum* 2009;60:1944-56.
32. Humby F, Bombardieri M, Manzo A, et al. Ectopic lymphoid structures support ongoing production of class-switched autoantibodies in rheumatoid synovium. *PLoS Med* 2009;6(1):e1.
33. Chabaud M, Fossiez F, Taupin JL, Miossec P. Enhancing effect of IL-17 on IL-1-induced IL-6 and leukemia inhibitory factor production by rheumatoid arthritis synoviocytes and its regulation by Th2 cytokines. *J Immunol* 1998;161:409-14.
34. Miossec P, Korn T, Kuchroo VK. Interleukin-17 and type 17 helper T cells. *N Engl J Med* 2009;361:888-98.
35. Genovese MC, Van den Bosch F, Roberson SA, et al. LY2439821, a humanized anti-interleukin-17 monoclonal antibody, in the treatment of patients with rheumatoid arthritis: a phase I randomized, double-blind, placebo-controlled, proof-of-concept study. *Arthritis Rheum* 2010;62:929-39.
36. Behrens F, Himsel A, Rehart S, et al. Imbalance in distribution of functional autologous regulatory T cells in rheumatoid arthritis. *Ann Rheum Dis* 2007;66:1151-6.
37. Nadkarni S, Mauri C, Ehrenstein MR. Anti-TNF-alpha therapy induces a distinct regulatory T cell population in patients with rheumatoid arthritis via TGF-beta. *J Exp Med* 2007;204:33-9. [Erratum, *J Exp Med* 2007;204:205.]
38. McInnes IB, Leung BP, Liew FY. Cell-cell interactions in synovitis: interactions between T lymphocytes and synovial cells. *Arthritis Res* 2000;2:374-8.
39. Seyler TM, Park YW, Takemura S, et al. BlyS and APRIL in rheumatoid arthritis. *J Clin Invest* 2005;115:3083-92.
40. Ohata J, Zvaifler NJ, Nishio M, et al. Fibroblast-like synoviocytes of mesenchymal origin express functional B cell-activating factor of the TNF family in response to proinflammatory cytokines. *J Immunol* 2005;174:864-70.
41. Edwards JC, Szczepanski L, Szechinski J, et al. Efficacy of B-cell-targeted therapy with rituximab in patients with rheumatoid arthritis. *N Engl J Med* 2004;350:2572-81.
42. Cornish AL, Campbell IK, McKenzie BS, Chatfield S, Wicks IP. G-CSF and GM-CSF as therapeutic targets in rheumatoid arthritis. *Nat Rev Rheumatol* 2009;5:554-9.
43. Haringman JJ, Gerlag DM, Zwiderman AH, et al. Synovial tissue macrophages: a sensitive biomarker for response to treatment in patients with rheumatoid arthritis. *Ann Rheum Dis* 2005;64:834-8.
44. Seibl R, Birchler T, Loeliger S, et al. Expression and regulation of Toll-like receptor 2 in rheumatoid arthritis synovium. *Am J Pathol* 2003;162:1221-7.
45. Liew FY, McInnes IB. The role of innate mediators in inflammatory response. *Mol Immunol* 2002;38:887-90.
46. Blüml S, Bonelli M, Niederreiter B, et al. Essential role of microRNA-155 in the pathogenesis of autoimmune arthritis in mice. *Arthritis Rheum* 2011;63:1281-8.
47. Kurowska-Stolarska M, Alivernini S, Ballantine LE, et al. MicroRNA-155 as a proinflammatory regulator in clinical and experimental arthritis. *Proc Natl Acad Sci U S A* 2011;108:11193-8.
48. Cascão R, Rosário HS, Souto-Carneiro MM, Fonseca JE. Neutrophils in rheumatoid arthritis: more than simple final effectors. *Autoimmun Rev* 2010;9:531-5.
49. Nigrovic PA, Lee DM. Synovial mast cells: role in acute and chronic arthritis. *Immunol Rev* 2007;217:19-37.
50. Hueber AJ, Asquith DL, Miller AM, et al. Mast cells express IL-17A in rheumatoid arthritis synovium. *J Immunol* 2010;184:3336-40.
51. Schuerwegh AJ, Ioan-Facsinay A, Dorjée AL, et al. Evidence for a functional role of IgE anticitrullinated protein antibodies

- in rheumatoid arthritis. *Proc Natl Acad Sci U S A* 2010;107:2586-91.
52. Raza K, Falciani F, Curnow SJ, et al. Early rheumatoid arthritis is characterized by a distinct and transient synovial fluid cytokine profile of T cell and stromal cell origin. *Arthritis Res Ther* 2005;7:R784-R795.
 53. Feldmann M, Brennan FM, Maini RN. Rheumatoid arthritis. *Cell* 1996;85:307-10.
 54. Hess A, Axmann R, Rech J, et al. Blockade of TNF- α rapidly inhibits pain responses in the central nervous system. *Proc Natl Acad Sci U S A* 2011;108:3731-6.
 55. McInnes IB, Schett G. Cytokines in the pathogenesis of rheumatoid arthritis. *Nat Rev Immunol* 2007;7:429-42.
 56. Brennan FM, McInnes IB. Evidence that cytokines play a role in rheumatoid arthritis. *J Clin Invest* 2008;118:3537-45.
 57. Pesu M, Laurence A, Kishore N, Zwillich SH, Chan G, O'Shea JJ. Therapeutic targeting of Janus kinases. *Immunol Rev* 2008;223:132-42.
 58. Kremer JM, Bloom BJ, Breedveld FC, et al. The safety and efficacy of a JAK inhibitor in patients with active rheumatoid arthritis: results of a double-blind, placebo-controlled phase IIa trial of three dosage levels of CP-690,550 versus placebo. *Arthritis Rheum* 2009;60:1895-905.
 59. Bajpai M, Chopra P, Dastidar SG, Ray A. Spleen tyrosine kinase: a novel target for therapeutic intervention of rheumatoid arthritis. *Expert Opin Investig Drugs* 2008;17:641-59.
 60. Weinblatt ME, Kavanaugh A, Genovese MC, Musser TK, Grossbard EB, Magilav DB. An oral spleen tyrosine kinase (Syk) inhibitor for rheumatoid arthritis. *N Engl J Med* 2010;363:1303-12.
 61. Bradfield PF, Amft N, Vernon-Wilson E, et al. Rheumatoid fibroblast-like synoviocytes overexpress the chemokine stromal cell-derived factor 1 (CXCL12), which supports distinct patterns and rates of CD4+ and CD8+ T cell migration within synovial tissue. *Arthritis Rheum* 2003;48:2472-82.
 62. Filer A, Parsonage G, Smith E, et al. Differential survival of leukocyte subsets mediated by synovial, bone marrow, and skin fibroblasts: site-specific versus activation-dependent survival of T cells and neutrophils. *Arthritis Rheum* 2006;54:2096-108.
 63. Aupperle KR, Boyle DL, Hendrix M, et al. Regulation of synoviocyte proliferation, apoptosis, and invasion by the p53 tumor suppressor gene. *Am J Pathol* 1998;152:1091-8.
 64. Schett G, Redlich K, Xu Q, et al. Enhanced expression of heat shock protein 70 (hsp70) and heat shock factor 1 (HSF1) activation in rheumatoid arthritis synovial tissue: differential regulation of hsp70 expression and hsf1 activation in synovial fibroblasts by proinflammatory cytokines, shear stress, and antiinflammatory drugs. *J Clin Invest* 1998;102:302-11.
 65. Amano T, Yamasaki S, Yagashita N, et al. Synoviolin/Hrd1, an E3 ubiquitin ligase, as a novel pathogenic factor for arthropathy. *Genes Dev* 2003;17:2436-49.
 66. Stanczyk J, Pedrioli DM, Brentano F, et al. Altered expression of microRNA in synovial fibroblasts and synovial tissue in rheumatoid arthritis. *Arthritis Rheum* 2008;58:1001-9.
 67. Lefèvre S, Knedla A, Tennie C, et al. Synovial fibroblasts spread rheumatoid arthritis to unaffected joints. *Nat Med* 2009;15:1414-20.
 68. Lee DM, Kiener HP, Agarwal SK, et al. Cadherin-11 in synovial lining formation and pathology in arthritis. *Science* 2007;315:1006-10.
 69. Rhee DK, Marcelino J, Baker M, et al. The secreted glycoprotein lubricin protects cartilage surfaces and inhibits synovial cell overgrowth. *J Clin Invest* 2005;115:622-31.
 70. Sabeh F, Fox D, Weiss SJ. Membrane-type I matrix metalloproteinase-dependent regulation of rheumatoid arthritis synoviocyte function. *J Immunol* 2010;184:6396-406.
 71. van der Heijde DM. Joint erosions and patients with early rheumatoid arthritis. *Br J Rheumatol* 1995;34:74-8.
 72. Visser H, le Cessie S, Vos K, Breedveld FC, Hazes JM. How to diagnose rheumatoid arthritis early: a prediction model for persistent (erosive) arthritis. *Arthritis Rheum* 2002;46:357-65.
 73. Gravalles EM, Harada Y, Wang JT, Gorn AH, Thornhill TS, Goldring SR. Identification of cell types responsible for bone resorption in rheumatoid arthritis and juvenile rheumatoid arthritis. *Am J Pathol* 1998;152:943-51.
 74. Schett G, Teitelbaum SL. Osteoclasts and arthritis. *J Bone Miner Res* 2009;24:1142-6.
 75. Schett G, Stach C, Zwerina J, Voll R, Manger B. How antirheumatic drugs protect joints from damage in rheumatoid arthritis. *Arthritis Rheum* 2008;58:2936-48.
 76. McGonagle D, Tan AL, Møller Døhn U, Ostergaard M, Benjamin M. Microanatomic studies to define predictive factors for the topography of periarticular erosion formation in inflammatory arthritis. *Arthritis Rheum* 2009;60:1042-51.
 77. Jimenez-Boj E, Redlich K, Türk B, et al. Interaction between synovial inflammatory tissue and bone marrow in rheumatoid arthritis. *J Immunol* 2005;175:2579-88.
 78. Hetland ML, Ejlberg B, Hørslev-Petersen K, et al. MRI bone oedema is the strongest predictor of subsequent radiographic progression in early rheumatoid arthritis: results from a 2-year randomised controlled trial (CIMESTRA). *Ann Rheum Dis* 2009;68:384-90.
 79. Diarra D, Stolina M, Polzer K, et al. Dickkopf-1 is a master regulator of joint remodeling. *Nat Med* 2007;13:156-63.
 80. Djouad F, Bony C, Häupl T, et al. Transcriptional profiles discriminate bone marrow-derived and synovium-derived mesenchymal stem cells. *Arthritis Res Ther* 2005;7:R1304-R1315.
 81. Jones EA, English A, Henshaw K, et al. Enumeration and phenotypic characterization of synovial fluid multipotential mesenchymal progenitor cells in inflammatory and degenerative arthritis. *Arthritis Rheum* 2004;50:817-27.
 82. Wolfe F, Mitchell DM, Sibley JT, et al. The mortality of rheumatoid arthritis. *Arthritis Rheum* 1994;37:481-94.
 83. Solomon DH, Karlson EW, Rimm EB, et al. Cardiovascular morbidity and mortality in women diagnosed with rheumatoid arthritis. *Circulation* 2003;107:1303-7.
 84. Holmqvist ME, Wedrén S, Jacobsson LT, et al. Rapid increase in myocardial infarction risk following diagnosis of rheumatoid arthritis amongst patients diagnosed between 1995 and 2006. *J Intern Med* 2010;268:578-85.
 85. del Rincón ID, Williams K, Stern MP, Freeman GL, Escalante A. High incidence of cardiovascular events in a rheumatoid arthritis cohort not explained by traditional cardiac risk factors. *Arthritis Rheum* 2001;44:2737-45.
 86. Sattar N, McCarey DW, Capell H, McInnes IB. Explaining how "high-grade" systemic inflammation accelerates vascular risk in rheumatoid arthritis. *Circulation* 2003;108:2957-63.
 87. Sattar N, McInnes IB. Vascular comorbidity in rheumatoid arthritis: potential mechanisms and solutions. *Curr Opin Rheumatol* 2005;17:286-92.
 88. Emerging Risk Factors Collaboration. C-reactive protein concentration and risk of coronary heart disease, stroke, and mortality: an individual participant meta-analysis. *Lancet* 2010;375:132-40.
 89. Kraan MC, Versendaal H, Jonker M, et al. Asymptomatic synovitis precedes clinically manifest arthritis. *Arthritis Rheum* 1998;41:1481-8.
 90. Nielsen MM, van Schaardenburg D, Reesink HW, et al. Increased levels of C-reactive protein in serum from blood donors before the onset of rheumatoid arthritis. *Arthritis Rheum* 2004;50:2423-7.
 91. Choy E, Sattar N. Interpreting lipid levels in the context of high-grade inflammatory states with a focus on rheumatoid arthritis: a challenge to conventional cardiovascular risk actions. *Ann Rheum Dis* 2009;68:460-9.
 92. Choi HK, Hernán MA, Seeger JD, Robins JM, Wolfe F. Methotrexate and mortality in patients with rheumatoid arthritis: a prospective study. *Lancet* 2002;359:1173-7.
 93. Jacobsson LT, Tureson C, Gülfe A, et al. Treatment with tumor necrosis factor blockers is associated with a lower incidence of first cardiovascular events in patients with rheumatoid arthritis. *J Rheumatol* 2005;32:1213-8.

94. McKellar GE, McCarey DW, Sattar N, McInnes IB. Role for TNF in atherosclerosis? Lessons from autoimmune disease. *Nat Rev Cardiol* 2009;6:410-7.
95. Peters MJ, Symmons DP, McCarey D, et al. EULAR evidence-based recommendations for cardiovascular risk management in patients with rheumatoid arthritis and other forms of inflammatory arthritis. *Ann Rheum Dis* 2010;69:325-31.
96. Gough AK, Peel NF, Eastell R, Holder RL, Lilley J, Emery P. Excretion of pyridinium crosslinks correlates with disease activity and appendicular bone loss in early rheumatoid arthritis. *Ann Rheum Dis* 1994;53:14-7.
97. Güler-Yüksel M, Allaart CF, Goekoop-Ruiterman YPM, et al. Changes in hand and generalised bone mineral density in patients with recent-onset rheumatoid arthritis. *Ann Rheum Dis* 2009;68:330-6.
98. Schett G, Kiechl S, Weger S, et al. High-sensitivity C-reactive protein and risk of nontraumatic fractures in the Bruneck study. *Arch Intern Med* 2006;166:2495-501.
99. Smitten AL, Simon TA, Hochberg MC, Suissa S. A meta-analysis of the incidence of malignancy in adult patients with rheumatoid arthritis. *Arthritis Res Ther* 2008;10:R45.
100. Baecklund E, Sundström C, Ekblom A, et al. Lymphoma subtypes in patients with rheumatoid arthritis: increased proportion of diffuse large B cell lymphoma. *Arthritis Rheum* 2003;48:1543-50.

Copyright © 2011 Massachusetts Medical Society.