



PROCAN

PROFESSIONAL CANOPIES 2015-2016 CATALOGUE



The Proven Solution... driven by you.

WELCOME TO THE CSM PROCAN CATALOGUE

The **MISSION** of CSM Transport Equipment is to provide reliable products of consistent quality to discerning clients. Our committal to industry is to provide this service within acceptable lead times and at a sustainable cost. Closely aligned to this mission is the committal to our employees, which is reflected in staff training and development.

The **VISION** of CSM Transport Equipment is to be a leading provider of Transport Equipment to the Australian market. This vision will underpin our business activities and our focus on customer satisfaction.

The **FOCUS** of CSM Transport Equipment on innovation and integrity provides our clients with quality products designed to service their requirements for many years to come.

**BUILT IN
AUSTRALIA**

CONTENTS

About Us	2-5
Product Overview	6-7
FleetPro II Canopies	8-11
TradePro II Canopies	12-15
Metro II Canopies	16-19
Canopy Underbody Accessories	20-22
Canopy Internal Accessories	23-26
Canopy External Accessories	27-28
Canopy Roof Accessories	28-30
Canopy Electrical Accessories	30-32
Vehicle Accessories	33
Vehicle Safety	33
Vehicle Specifications	34
Canopy Specifications	35

"CSM delivers an impressive line-up of trade canopies for CEC. They look great and have an elegantly simple design that works well, every time.

The team are great to work with. They take all the hassle out of fleet procurement and setup. Their R&D team develop and deliver new improvements from customer feedback - it's not just lip service.

CEC are proud to drive, use and support CSM - a great, regional company delivering a world class product."

Alistair Green - Condamine Electric Company QLD

DESIGN CAPABILITIES

Smarter by Design, Smarter in Finish. From its inception in 2004, the Procan range of canopies has been developed using computer aided software technology. CSM uses Solid Works® solid modelling and state-of-the-art CAD/CAM software to utilize the best technology and systems available to develop, design and manufacture innovative products.



PRODUCTION CAPABILITIES

CSM has adopted the 'Lean Manufacturing' discipline throughout the entire production facility. This allows for a greater flexibility within the company, maintaining product quality, consistency and short lead time. CSM has a strong vision of quality and continual improvement and is constantly seeking to provide innovative canopy solutions.



LOGISTICS

Distance is no barrier, with service centres and distributors nationwide. CSM despatches canopies on freight to many destinations around Australia and overseas. At CSM we can provide a turnkey solution including vehicle logistics, or transportation of the canopy to one of our approved fitters. CSM Fleet Solutions is another division of CSM which also offers our services in the major Australian centres.



Sheet Metal Punching Machine





CSM FLEET SOLUTIONS

With CSM's wealth of experience, we are able to cater for the many different vehicle types available on the market today. CSM can offer our corporate customers fleet solutions and a complete fitting service. Our team is trained to assess your requirements and provide a relevant solution. CSM Fleet Solutions are focused on individual fleet clients' needs and excel right from the design phase through to the pre-delivery and inspection process.



PROCAN

PROFESSIONAL CANOPIES

Image supplied © The Royal Automobile Club of Queensland Limited

FLEETPRO II

PROCAN FLEET CANOPIES

The FleetPro II Canopy range has been designed for the Fleet buyer and has the ability to be adapted to a large range of industries. The aluminium floor extrusion construction provides a low weight, quality canopy with exceptional strength and durability. The wide 'daylight' opening of the doorways and flush sill design creates excellent accessibility to all your equipment and goods. As with the other models of the Procan Range, a large range of accessories can be fitted to provide the customer with the ultimate solution to their needs.

FleetPro: Pages 8 - 11

TRADEPRO II

PROCAN TRADESMANS CANOPIES

The TradePro II range of canopies by CSM is the result of many hours of design, drawings and product development. The TradePro II canopy has been designed to meet the needs of Tradesmen and technicians. The 3 large doors - two sides and one rear - and flush sill provide easy access into the canopy. The robust welded constructions allow for heavy loading both internally and externally. There are numerous options that can be integrated into the TradePro II design. For easy selection, these optional extras are listed in the accessories section of this catalogue.

TradePro: Pages 12 - 15

METRO II

PROCAN URBAN CANOPIES

The Metro II range of canopies by CSM has been developed for those customers who appreciate quality, but are willing to sacrifice some of the standard features to reduce costs. The Metro II range is manufactured to the same quality standards and workmanship as with all canopy solutions provided by Procan. The standard Metro II Canopy can also be 'optioned up' by choosing some of the options in the accessories section of this catalogue to give you greater flexibility and a canopy with the space you need.

Metro: Pages 16 - 19



FLEETPRO II

PROCAN FLEET CANOPIES

The FleetPro II model by CSM Transport Equipment has been designed where image and functionality are Imperative. The aluminium construction and extrusions provide a low weight quality canopy with exceptional strength and durability. The wide "daylight" openings of the doorways and flush sill design create excellent access to all your equipment and goods.



Toyota Hilux FleetPro II - with Dreamrider Roof Rack, Tapered Base Boxes, Rear Skirt Panel



Toyota Hilux FleetPro II - with Rear Platform & Double Folding Spare Wheel Mount, Fold Down Step & Underbody Drawer Unit



Toyota Landcruiser FleetPro II - with Roof Bars & Ladder Rack Combination, Standard & Tapered Based Boxes, Fuel Filler Skirt Panel, Side Swing Wheel Mount



Toyota Landcruiser FleetPro II - with Roll Over Protection Bars (ROP's), Roof Bars & Ladder Holder, TradePro II Underbody Tool Box, Rear Platform & Spare Wheel Holders

FLEETPRO II

PROCAN FLEET CANOPIES

The FleetPro II Ute Canopy range has been designed for the Fleet buyer and has the ability to be adapted to a large range of vehicles with minimum design changes. The length of the FleetPro Canopy is also made to suit single cab, space cab or twin cab Utes in all makes and models.

As with the other models of the Procan Canopy Range, a large range of accessories are available. These can be fitted to provide you with the ultimate solution for your vehicle. The FleetPro Ute Canopy also features concealed wiring ducts which allows all wiring to be protected from damage and give a clean look to the inside of the canopy. The flush sill design allows easy access to the inside of your canopy and allows the operator to reduce lifting when removing equipment from inside the canopy.

Standard Features:

- 2.5mm Aluminium construction
- Extruded Aluminium floor
- Flush door sills
- Rear colour matched tail light channel
- Full one piece colour matched mudguards
- 3 door standard configuration
- E-ZEE latch locks (Slam Action)
- Colour match white durable 2 pack poly-urethane paint finish
- Stainless steel door hinge and PVC hinge seal

Options:

- Split doors
- Bi-fold doors
- Front & Rear windows
- Side windows
- Colour matching to colours.
- Roof Racks

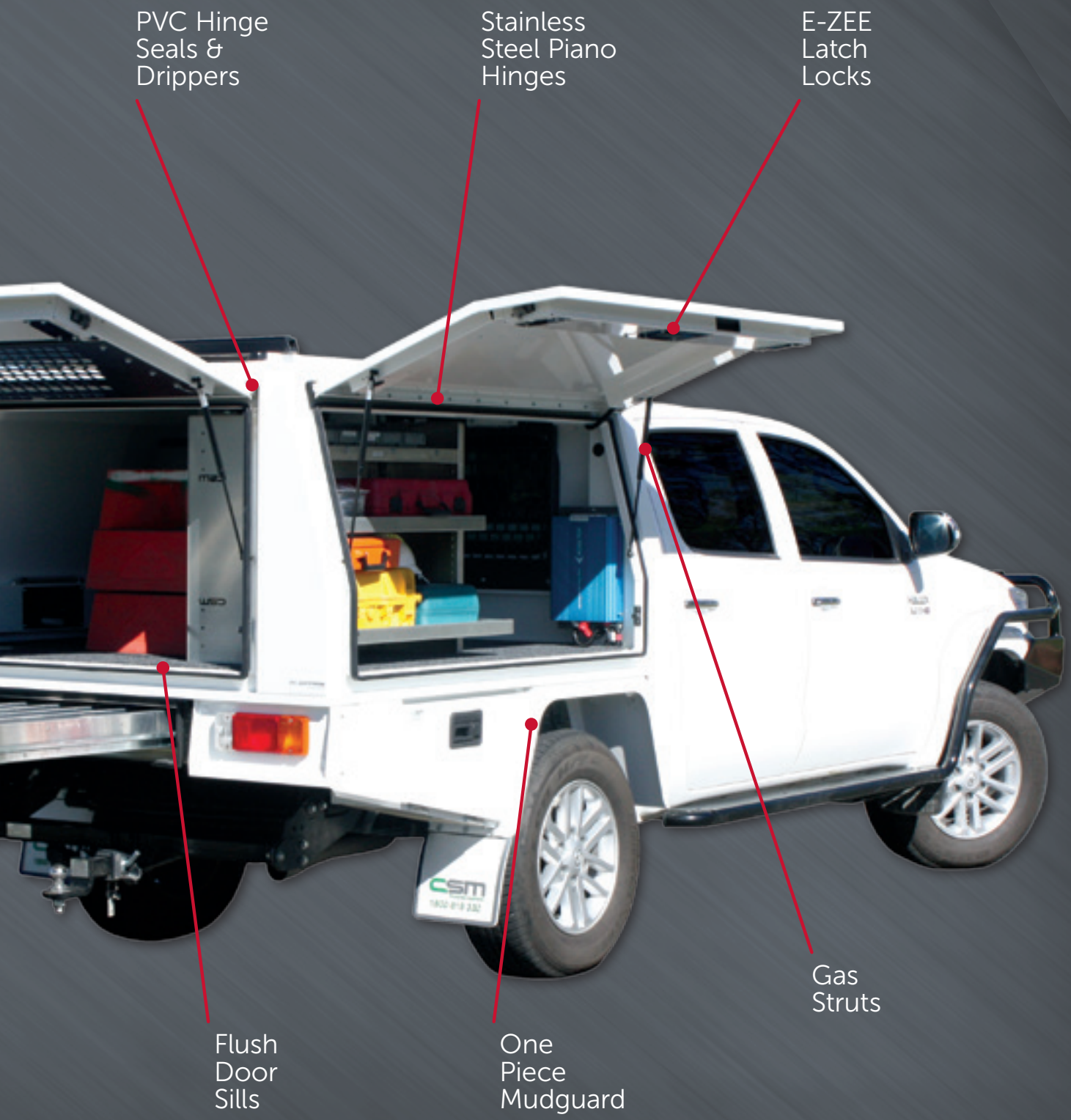
See page 20 for other accessories
(Note: Not all accessories are available for the FleetPro II. Contact CSM for more details and information)

FleetPro II Specifications				
To Suit	Length x Height mm	Width 1825mm / Weight	Width 1875mm / Weight	Width 1925mm / Weight
Dual/Twin Cab	1650 x 900	201.0 kg	204.0 kg	207.0 kg
Dual/Twin Cab	1650 x 1000	211.0 kg	214.0 kg	217.0 kg
Dual/Twin Cab	1800 x 900	209.5 kg	213.5 kg	217.5 kg
Dual/Twin Cab	1800 x 1000	220.5 kg	224.5 g	228.5 kg
Dual/Twin Cab	1800 x 1150	231.5 kg	235.5 kg	239.5 kg
Extra/Space Cab	2100 x 900	232.0 kg	236.0 kg	240.0 kg
Extra/Space Cab	2100 x 1000	244.0 kg	248.0 kg	252.0 kg
Single Cab	2250 x 900	243.5 kg	248.0 kg	252.5 kg
Single Cab	2250 x 1000	255.8 kg	260.3 kg	264.8 kg
Single Cab	2250 x 1150	268.0 kg	272.5 kg	277.0 kg
Single Cab	2400 x 900	255.0 kg	260.0 kg	265.0 kg
Single Cab	2400 x 1000	267.5 kg	272.5 kg	277.5 kg
Single Cab	2400 x 1150	280.0 kg	285.0 kg	290.0 kg
Single Cab	2550 x 1000	279.3 kg	284.8 kg	290.3 kg
Single Cab	2550 x 1150	292.0 kg	297.5 kg	303.0 kg

Rear Door



E-ZEE Latch Locks



PVC Hinge
Seals &
Drippers

Stainless
Steel Piano
Hinges

E-ZEE
Latch
Locks

Flush
Door
Sills

One
Piece
Mudguard

Gas
Struts

TRADEPRO II

PROCAN TRADESMANS CANOPIES

The TradePro II canopy by CSM Transport Equipment has been designed to meet the needs of tradesmen and technicians. The 3 large door openings and flush door sills provide good access to their tools and equipment. The robust welded construction allows for heavy loading both internally and on the roof, providing the Tradesmen with the right tool and security.





Isuzu D-MAX TradePro II - with no optional extras



Toyota Landcruiser TradePro II - with Roof Bars, Upgraded Mudguards & Tail Light Channel, Fuel Filler Skirt Panel & Tapered Base Box



Volkswagen Amarok TradePro II - with Colour Matching



Toyota Landcruiser TradePro II - with Roll Over Protection Bars (ROP's), Dreamrider Rack, Custom Lockable Fuel Filler Box, Water Tank & Soap Dispenser & Upgraded Tail Light Channel

TRADEPRO II

PROCAN TRADESMANS CANOPIES

The TradePro II Ute Canopy has been designed for the discerning buyer that requires quality protection for his equipment. The TradePro II Ute Canopy can be optioned up with many accessories creating a very user friendly package designed to last for many years. The TradePro II canopy will provide you with a reliable, waterproof and dustproof storage solution for your equipment for many years to come and comes in various sizes to suit the make and model of your vehicle.

The TradePro II Canopy is supplied standard as an integrated model but can also be supplied as a lift-off model or a slide-on model to suit a tray if required. The lift-off model is manufactured with lifting points should the canopy be required to be lifted off the existing tray body at any time while the slide-on model is designed to be fixed to the tray and has no lifting points. The integrated model is manufactured with galvanised mounting rails and is designed to be fitted directly to the chassis of the vehicle. Many options and accessories are also available to enhance the functionality of your canopy.

Standard Features:

- 2.5mm Aluminium construction
- Extruded Aluminium floor
- Flush door sills
- 3 door standard configuration
- Reigullatch (Turn action) locks – 2 point locking
- 040 white durable 2 pack poly-urethane paint finish
- Stainless steel door hinge and PVC hinge seal

Options:

- Split doors
- Bi-fold doors
- Front & Rear windows
- Side windows
- Colour matching
- Roof Racks

See page 20 for other accessories
(Note: Not all accessories are available for the TradePro II. Contact CSM for more details and information)

TradePro II Specifications

To Suit	Length x Height mm	Width 1825mm / Weight	Width 1875mm / Weight	Width 1925mm / Weight
Dual/Twin Cab	1650 x 1000	210 kg	213 kg	219 kg
Dual/Twin Cab	1800 x 1000	220 kg	224 kg	228 kg
Extra/Space Cab	2100 x 1000	243 kg	247 kg	251 kg
Single Cab	2400 x 1000	265 kg	270 kg	275 kg





METRO II

PROCAN URBAN CANOPIES

The Procan Metro II range of canopies by CSM Transport Equipment has been designed and built for the budget conscious without compromising quality for those who are prepared to sacrifice some of the features that are found in the other Procan canopy models.





Toyota Hilux Metro II - with no optional extras



Toyota Hilux Metro II - with no optional extras



Toyota Work Mate Hilux Metro II - Painted to Vehicle Specific Colour



Toyota Hilux Metro II - with Roof Bars & Work Light

METRO II

PROCAN URBAN CANOPIES

The Metro II Ute Canopy has been designed for the client who has a specific budget and who is prepared to sacrifice some of the features that are found in the other Procan canopy models. Built from 2.5mm Aluminium sheet and an Aluminium extrusion floor, this canopy will provide years of trouble free protection to all your tools and equipment.

The Metro II Canopy is supplied in 3 standard sizes only, the width and height being the same with 3 different lengths to suit the cab style. The Metro II is designed to fit on most light commercial Utes and is supplied as an integrated model but can also be supplied as a slide-on model so it can be fitted to an existing tray. Like the other models in the Procan Canopy Range, there is a range of accessories and options available.

Standard Features:

- 2.5mm Aluminium construction
- Extruded Aluminium floor
- Flush door sills
- 2 door standard configuration
- Stainless steel drop T locks – 2 point locking
- 040 white durable 2 pack poly-urethane paint finish
- Stainless steel door hinge and PVC hinge seal

Options:

- Rear access door
- Front & rear windows
- Side windows
- Roof racks
- Colour matching

See page 20 for other accessories
(Note: Not all accessories are available for the Metro II. Contact CSM for more details and information)

Metro II Specifications			
To Suit	Part No.	Length x Height xWidth mm	Weight
Dual/Twin Cab	METII-DC18	1800 x 1000 x 1875	188 kg
Extra/Space Cab	METII-EC21	2100 x 1000 x 1875	209 kg
Single Cab	METII-SC24	2400 x 1000 x 1875	232 kg

Stainless Steel Drop T Locks

Gas Struts

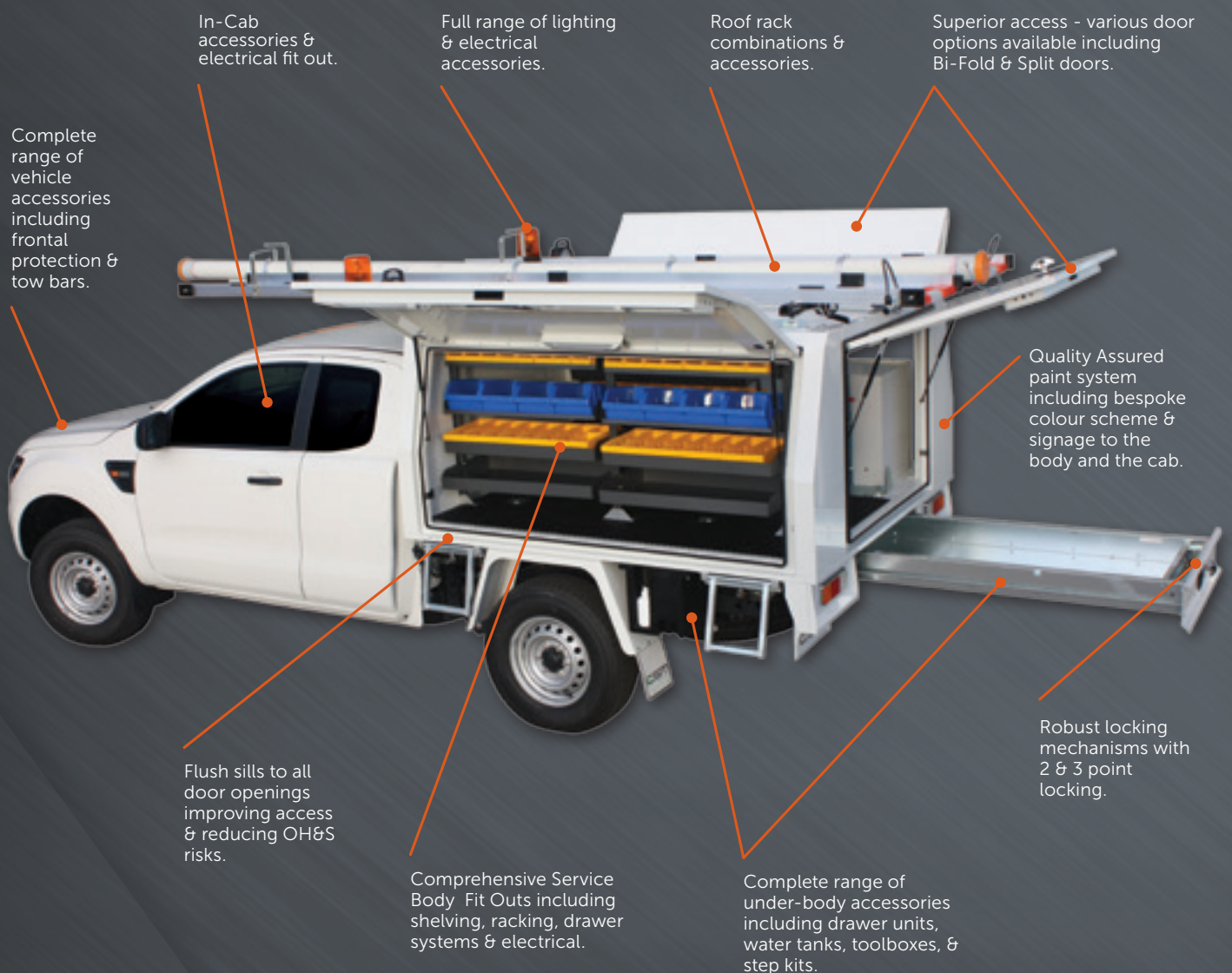




PROCAN

CANOPY ACCESSORIES

The Procan range of canopies is further enhanced with an extensive range of accessories offered by CSM. This huge range varies from large external accessories to the smallest detail of a 12 volt internal power supply. Procan can take care of your complete canopy fitout.



CANOPY UNDERBODY ACCESSORIES



STANDARD UNDERBODY TOOLBOX

Part No: 1164

- 2.5mm aluminium fully welded construction
- 1 x drop down door with lanyard
- Greaseable hinges
- 3 point RieguLatch
- Pinch weld seal to door
- Colour matched to canopy & cab



TAPERED BASE UNDERBODY TOOLBOX

Part No: 1165

- 2.5mm aluminium fully welded construction
- 1 x drop down door with lanyard
- Greaseable hinges
- 3 point RieguLatch
- Pinch weld seal to door
- Colour matched to canopy & cab
- Tapered base for ground clearance



UNDERBODY SKIRT PANEL - FRONT

Part No: 1210

- To fit between a CSM toolbox and the mudguard, or in lieu of toolbox
- Includes cut out for fuel filler where necessary
- 2.5mm aluminium fully welded construction
- Colour matched to canopy & cab



UNDERBODY SKIRT PANEL - REAR

Part No: 1211

- To fit between a CSM toolbox and the rear tail light channel, or in lieu of toolbox
- Includes cut out for fuel filler where necessary
- 2.5mm aluminum fully welded construction
- Colour matched to canopy & cab



UNDERBODY BATTERY BOX

Part No: 1166 standard - 1167 tapered base

- 2.5mm aluminium fully welded construction
- Drop down door with lanyard
- Vented
- 3 point RieguLatch
- Colour matched to canopy & cab



PLASTIC WATER TANK

Part No: 1320(15L) 1325(23L)

- 15/23 Litre water tank
- Food grade Rotational Moulded Plastic
- Filler bung and tap
- Hand soap bottle included



PLASTIC WATER TANK

Part No: 1330(35L) 1335(53L) 1340(85L)

- 35/53/85 Litre water tank
- Food grade Rotational Moulded Plastic
- Flat configuration for mounting between body runners
- Plumbed to the outside of the body



PLASTIC WATER TANK

Part No: 1350

- 40 Litre water tank
- Food grade Rotational Moulded Plastic
- Shaped to suit mudguard
- Filler bung and tap



WATER TANK SKIRT PANEL

Part No: 1355

- 2.5mm aluminium panel
- Colour matched to vehicle
- Available for 30 & 40 litre tanks

CANOPY UNDERBODY ACCESSORIES



FLEETPRO II UNDERBODY DRAWER

Part No: 1412SL-UBD

- Lengths: 1200, 1500, 1600, 1800 or 2100mm
- Depth: 150mm
- Slam Latch
- Manufactured from heavy gauge galvanised steel with fully sealed roller ball bearings to give years of trouble free operation. The CSM Werx top or dust cover is also available to suit.



TRADEPRO II UNDERBODY DRAWER

Part No: 1412-UBD

- Lengths: 1500, 1600, 1800 or 2100mm
- Depth: 120 or 150mm (2100L 150mm only)
- Reigu Latch
- Manufactured from heavy gauge galvanised steel with fully sealed roller ball bearings to give years of trouble free operation. The CSM Werx top or dust cover is also available to suit.



METRO II UNDERBODY DRAWER UNIT

Part No: 1410-UBD

- Lengths: 1500, 1600, 1800 or 2100mm
- Depth: 120 or 150mm (2100L 150mm only)
- T Latch
- Manufactured from heavy gauge galvanised steel with fully sealed roller ball bearings to give years of trouble free operation. The CSM Werx top or dust cover is also available to suit.



UNDERBODY DRAWER WERKS TOP

Part No: 1430

- 17mm Marine grade ply
- Professional finish to ply
- Fitted with 2 x gas struts
- Provides firm hard wearing surface to work on when in closed position
- Helps protect tools and equipment



UNDERBODY DRAWER DUST COVER

Part No: 1440

- 2.5mm smooth aluminum
- Fitted with 2 x gas struts
- Helps seal drawer against dust and water ingress
- Provides firm hard wearing surface to work on when in closed position
- Helps protect tools and equipment



UNDERBODY DRAWER ALERT SWITCH

Part No: 1415

- Alert switch fitted and wired to vehicle system
- Activated when drawer is unlatched



UNDERBODY DRAWER CENTRAL LOCKING

Part No: 1425

- Wired into existing vehicle system (where available)
- Key over-ride



UNDERBODY SINGLE STEP

Part No: 1510

- Fitted to the underneath of canopy
- Compact design
- Folds up and latches for secure travel
- Heavy duty construction



UNDER BODY SPARE WHEEL MOUNT

Part No: 3040

- Designed to suit Landcruiser & Patrol
- Lockable door

CANOPY INTERNAL ACCESSORIES



SHELVING UNITS - 3 ADJUSTABLE SHELVES

Part No: 2100

- Aluminium construction
- 3 x adjustable shelves
- Suits parts bins
- 450mm, 600mm 900 & 1200mm Widths



PARTS BINS

Part No: 2100-IH

- Grey parts bin
- 324 depth bins to suit top shelf
- 424 depth bins to suit mid shelf



ROLACASE UNIT

Part No: 2120

- Plastic removable trays
- Metal surround
- Roller bearing guides
- For a full range of these products see this website www.rolacase.com



DRAWER UNITS

Part No: 2216 to 2218

- Available in 450 & 600 wide
- Available in 250 & 350 high
- 90kg rated roller bearing slides
- Lockable
- Slam Latch



DRAWER UNIT WITH PULL OUT BENCH

Part No: 2217

- Available in 450 & 600 wide
- 90kg rated roller bearing slides
- Lockable
- Slam Latch



DROP DOWN FRIDGE SLIDE UNIT

Part No: 2235

- 3 sizes available
- Drop down mechanism allowing for easy access (Allow 75mm height for plinth to clear sills)



FRIDGE UNIT SURROUND

Part No: 2236

- Designed to suit fridge slide
- Punched aluminium construction for ventilation
- 3 x sides + top



MULTI-PURPOSE SLIDE UNIT

Part No: 2230

- External size : 800D x 525W x 640H (nom.)
- Internal tray size : 725D x 435W x 530H
- Punched gal construction
- 3 x sides + top
- Suitable for fridge or generator



SINGLE SPARE WHEEL MOUNT

Part No: 2310

- Fully adjustable
- Single "Hub" fixing
- Suits a large range of wheel sizes

CANOPY INTERNAL ACCESSORIES



GAS BOTTLE RESTRAINT

Part No: 2410

- 3 different sizes available
- Will suit 9kg gas bottles
- Can be fitted internally or externally
- Robust aluminum construction



JERRY CAN HOLDER

Part No: 2420

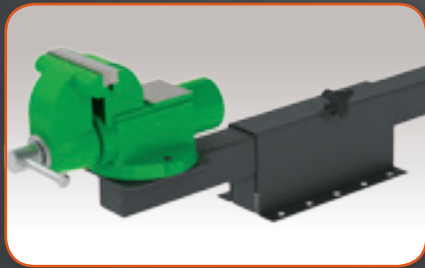
- Will suit most jerry cans
- Pictured with 20L jerry can
- Can be fitted internally or externally



FOLDING VICE MOUNT & VICE

Part No: 2510

- Robust design – zinc plated finish
- 4" Engineers vice – straight jaws (Record)
- Easy fold away for practical storage



SLIDING VICE MOUNT & VICE

Part No: 2520 Mount, 2525 Vice

- Robust design – gal finish
- 4" Engineers vice – straight jaws (Record)
- Slides away for convenience



FIRE EXTINGUISHER

Part No: 2530

- 1kg to suit automotive
- Robust mount
- Designation sticker



HAND WASH STATION

Part No: 2535

- Hot & cold water
- Fold down basin
- Water level indicator



FIRST AID KIT

Part No: 2540

- To suit automotive
- Aluminium mount
- Designation sticker



FRONT WINDOW & MESH

Part No: 2610 Window, 2611 Mesh

- To suit all canopy models
- 6mm toughened glass with locked bead rubber fixing
- Fully replaceable glass
- Mesh is aluminium powder coated finish
- Mesh is removable for window cleaning



REAR WINDOW & MESH

Part No: 2620 Window, 2621 Mesh

- To suit all canopy models
- 6mm toughened glass with locked bead rubber fixing
- Fully replaceable glass
- Mesh is aluminium powder coated finish
- Mesh is removable for window cleaning

CANOPY INTERNAL ACCESSORIES



SIDE WINDOW & MESH

Part No: 2630 Window, 2631 Mesh

- 6mm toughened glass with locked bead rubber fixing
- Fully replaceable glass
- Mesh is aluminium powder coated finish
- Mesh is removable for window cleaning



SLIDING ALUMINIUM SIDE WINDOW

Part No: 2635

- 4mm laminated glass
- Aluminium frame
- Powdercoated finish
- Can also be fitted at the rear or front of the canopy



CSM MESH DIVIDER (FRONT – REAR)

Part No: 2640

- Punched aluminium construction
- Excellent easy organization for hanging items
- Fitted from front to rear of body to rear to specified position



CSM MESH DIVIDER (SIDE - SIDE)

Part No: 2645

- Punched aluminium construction
- Excellent easy organization for hanging items
- Fitted from side to side of body to specified position



TIE DOWN CHANNEL - STD

Part No: 2710

- Aluminium channel
- Ideal for securing loads
- Eye bolts can be purchased to fit - see part no: 2720



ALUMINIUM CARGO CHANNEL - 45MM

Part No: 2715

- Aluminium channel – LO216
- Ideal for securing loads
- Hold down rings can be purchased to fit - see part no: 2725/2726



TIE DOWN EYE BOLT

Part No: 2720

- Eye bolts to suit aluminium channel - see part no: 2710
- Fully adjustable



CARGO HOLD DOWN RING

Part No: 2725 (Large)

- Hold Down Ring to suit Aluminium Cargo Channel - see part no: 2715
- Fully adjustable



FLUSH FLOOR TIE DOWN POINT

Part No: 2730

- Tie down point
- Recessed into floor

CANOPY INTERNAL ACCESSORIES



FIXED WALL TIE DOWN POINT

Part No: 2740

- Tie down point
- Fixed to specified locations
- Greater flexibility to secure your items



FALSE FLOOR - CARPET FINISH

Part No: 2810

- Aluminium or timber construction with marine carpet
- Equipment protection



FALSE FLOOR - TIMBER FINISH

Part No: 2820

- 17mm Ply finish
- Hard wearing surface



FALSE FLOOR - METAL FINISH

Part No: 2830

- Aluminium construction
- Mill finish



RUBBER MATTING - CANOPY FLOOR

Part No: 2840

- 10mm thick rubber matting
- Reduced equipment movement



RHINO COATING - CANOPY FLOOR

Part No: 2850

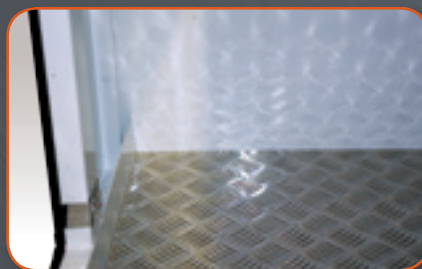
- 3mm coating thickness
- Impervious to most liquids



MARINE CARPET - CANOPY FLOOR

Part No: 2860

- Marine quality
- Professional appearance



ALUMINIUM CHECKER PLATE FLOOR

Part No: 2960

- 2.5mm aluminium checker plate
- Reduces wear and tear on flooring
- Helps to prevent items slipping inside



**MARINE PLY FLOOR
TRADEPRO & FLEETPRO ONLY**

Part No: 2970

- 17mm Black marine ply
- Increased "point loading" ability

CANOPY EXTERNAL ACCESSORIES



SPARE WHEEL PLATFORM

Part No: 3010

- Fitted to rear of canopy (2 door models only)
- Includes 2 x RSWM spare wheel mechanisms and locking pins
- Single "Hub" fixing, suits a wide range of wheels
- Includes aluminium checker plate deck



SINGLE SPARE WHEEL MOUNT

Part No: 3015

- Fitted to rear of canopy (2 door models only)
- Includes RSWM spare wheel mechanism and locking pin
- Single "Hub" fixing, suits a wide range of wheels
- RHS support frame to underside of wheel



FOLDING SPARE WHEEL MOUNT

Part No: 3020

- Fitted to rear of canopy
- Designed to suit a wide range of wheels
- 2 x swing down tyre mounts
- Includes platform



REAR SIDE SWING SPARE WHEEL MOUNT

Part No: 3030

- Designed to suit a wide range of wheels
- Swings away from rear of the canopy allowing for rear door usage
- Powdercoated antique silver



JACKS & SPIGGOTS (LIFT OFF CANOPY)

Part No: 3310

- Telescopic compact storage
- Wind up mechanism for easy lifting
- 1300kg capacity



STANDARD LOUVRE VENT

Part No: 3410

- Fitted to front wall of canopy
- Ventilates canopy
- Splash proof vent
- Mesh barrier to eliminate bugs etc.



LOUVRE DUST FILTER

Part No: 3411

- Fitted to the inside of 3410 Louvre
- Removable



SPLIT SIDE DOORS

Part No: 3510

- Drop down bottom section on chains
- Lift up top section on gas struts
- Bottom section retained by spring bolts



CENTRE MULLION/HALF SIDE DOORS

Part No: 3515

- Centre mullion to side door opening
- 2 x half-length side doors

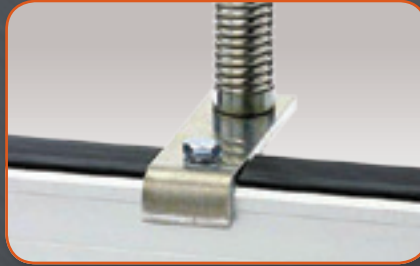
CANOPY EXTERNAL ACCESSORIES



BI-FOLD SIDE DOORS

Part No: 3520

- Fitted to side doors of canopy only
- Allows extra room when opening doors in confined spaces
- Latches to top door for increase head clearance



MINE FLAG MOUNT

Part No: 3650

- To suit multiple positions



COLOUR MATCH PAINT

Part No: 3610 (solid) 3615 (black)
3620 (metallic) 3625 (black metallic)

- 2 Pak polyurethane paint to comply with the factory automotive finish
- Professionally matched to vehicle colour using VIN number and car manufactures paint codes
- Finished in low-bake oven for a superior finish



CANOPY ROOF ACCESSORIES



COMMERCIAL ROOF BAR SET OF 2 (FIXED)

Part No: 4010 (1375L) 4011 (1500L)

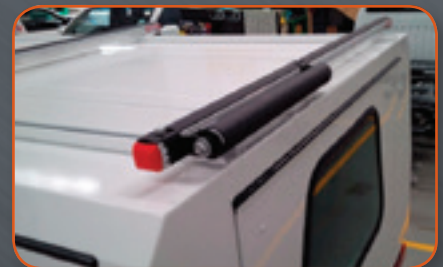
- Fitted to roof of the canopy
- Can be positioned to your requirements
- Strong and sturdy assembly



COMMERCIAL ROOF BAR

Part No: 4012

- Fitted to roof of the vehicle
- Can be positioned to your requirements
- Strong and sturdy assembly



COMMERCIAL ROOF BAR SET OF 2 (TRACK)

Part No: 4015 (1375L) 4016 (1500L)

- Fitted to roof of the canopy
- Easily moved along tracks to suit load
- Strong and sturdy assembly

CANOPY ROOF ACCESSORIES



BOAT LOADER SYSTEM

Part No: 4025(LHS side)
4026(RHS side) 4027(rear)

- Fitted to 4010 cross bars or similar
- 80kg SWL
- Choose from side or rear load
- Great and easy to use space saver



LADDER RACK COMBINATION

Part No: 4110

- Fitted to 4010 cross bars or similar
- Choose from a range of configurations
- Ladder holder/conduit carrier combo
- Ladder locks & rollers available



DREAMRIDER OVER CAB RACK

Part No: DRD23/28/30/35

- Ergonomic design
- Strong aluminium construction
- Fits to existing 4010 racks
- Available lengths - 2300, 2800, 3000, 3500
- Available width - 1350 STD



CSM ALUMINIUM CONDUIT TUBE

Part No: 4120

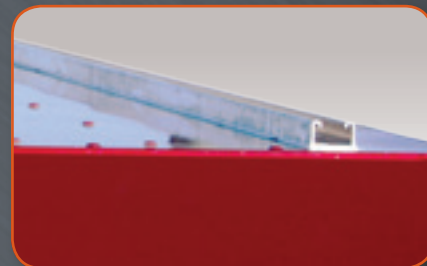
- Aerodynamic design
- Lockable cap & Solid end for safety
- Fits to existing 4010 racks
- Max length - 4060mm



CSM LADD-A-LIFT

Part No: LAD01L/02L/01R/02R

- Left side short/long or right side short or long
- OH&S compliant
- Reduces "high" lifting
- Fits to existing 4010 racks



COMPACT TIE RAIL CHANNEL

Part No: 4125

- Aluminium channel
- Ideal for securing loads
- Eye bolts can be purchased to fit - see part no: 4130



TIE RAIL EYE BOLTS

Part No: 4130

- To be used in conjunction with compact tie rail section - see part no: 4125
- Provides extra fixing points
- Can be moved to suit load



TIE RAIL BARS

Part No: 4135

- Designed to be used in conjunction with compact tie rail section - see part no: 4125
- Can be moved along compact tie rail section to suit load
- Provides extra tie down points



CANOPY AWNING

Part No: 4500

- To suit all canopy models
- Multiple sizing and configurations

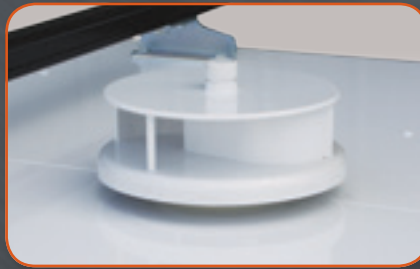
CANOPY ROOF ACCESSORIES



MULLER VENT

Part No: 4310

- Fitted to roof of canopy
- Keeps canopy well ventilated
- No moving parts



SPINNER VENT

Part No: 4320

- Fitted to roof of canopy
- Provides ventilation to canopy while travelling
- Quiet operation



POP UP VENT

Part No: 4330

- Can be fitted to roof or front wall of canopy
- Provides ventilation to canopy
- Waterproof and dustproof when shut

CANOPY ELECTRICAL ACCESSORIES



DOOR ALERT SWITCHES

Part No: 2910 (Switch)
2915 (Wired #1) 2916 (Wired #2)

- Innovative switch operated by rod latch in "home" position
- Warns you when a door is left unlatched
- #1 = wired to front of canopy
- #2 = wired into cab



LED STRIP LIGHT

Part No: 2921

- Wired into vehicle electrical system
- Incorporates on/off switch
- LED light - provides superior lighting



INTERNAL LIGHT - LED

Part No: 2923

- Wired into vehicle electrical system - 12/24V
- Incorporates on/off switch
- LED light - provides superior lighting



CENTRAL LOCKING MODULES

Part No: 2930

- Wired into vehicle locking system
- Operates with vehicle remote locking system where available
- Key over-ride feature



12 VOLT AUXILIARY SOCKET

Part No: 2940 (12V HD Narva)

- Wired into vehicle electrical system
- Supplied with in-line fuse
- Can be fitted almost anywhere in the canopy



12 VOLT AUXILIARY SOCKET

Part No: 2942 (12V 2 pin T)

- Wired into vehicle electrical system
- Supplied with in-line fuse
- Can be fitted almost anywhere in the canopy

CANOPY ELECTRICAL ACCESSORIES



ANDERSON PLUG

Part No: 2943

- Type 50 A
- Used for Lift -Off canopy models' power supply



DEUTSCH PLUG

Part No: 2944

- Multi-pin
- Used for power & control supply
- Weather proof



INVERTER

Part No: 2945, 2946, 2948

- Wired into vehicle electrical system
- 2 x 240power outlets
- Overload & short circuit protection
- 2945-1066W, 2946-2200W, 2948-3000W



AUXILLARY BATTERY SYSTEM

Part No: 2949

- Wired into vehicle electrical system
- DC-DC battery charger
- 100 Amp hour AGM battery



DUAL BATTERY SYSTEM

Part No: 2951

- Under bonnet with tray
- Wired into vehicle electrical system
- DC-DC battery charger
- 100 Amp hour AGM battery



BODY MOUNT STOP LIGHT

Part No: 3210

- Fitted to top rear of canopy
- Greater visibility for approaching vehicles
- LED Light with a tough casing



WINDOW MOUNT STOP LIGHT

Part No: 3215

- Fitted to top rear of canopy window
- Greater visibility for approaching vehicles
- LED Light with a tough casing



BODY HIGH MOUNT STOP/TAIL INDICATOR SET

Part No: 3220

- Fitted to rear of canopy
- Extra visibility for approaching vehicles
- Slim line LED strip lamp



LED MODULE FLASHER

Part No: 3222

- Flash rate 70 fpm min
- Available in Cycle/Single/Double/Triple & Quad flash
- Available in 12V or 24V

CANOPY ELECTRICAL ACCESSORIES



TAIL LIGHTS ST/TL/IND/RVS

Part No: 3224, 3225, 3227, 3228

- 3224 Standard 12V
- 3225 LED 12V 80mm
- 3227 LED 12/24V 100mm
- 3228 LED 12V (Toyota)



REVERSING CAMERA

Part No: 3235

- Dash or mirror mount monitor
- Compact camera
- Optional additional cameras available



REVERSING ALARM

Part No: 3236

- 97dB audible alarm



REVERSING LIGHT

Part No: 3237

- Side mounted spread beam
- 20 watt



REVERSE SENSOR

Part No: 3238

- 5 stage sensor
- Can remount original from bumper



LED WORK LIGHT

Part No: 3240

- Multi fit mount
- High quality sealed light with switch



12V AMBER FLASHING / STROBE LIGHT

4210 (flashing) 4215 (strobe)

- Fitted to roof for increased visibility
- Impact-resistant polycarbonate lens
- Strong clear dust cover



MINING LIGHT BAR

Part No: 4220

- Fitted to roof for increased visibility
- Extra visibility for approaching vehicles
- Mine approved



MINING LIGHT BAR WITH WORK LIGHT

Part No: 4221

- Fitted to roof for increased visibility
- Extra visibility for approaching vehicles
- LED work light fitted
- Mine approved

VEHICLE ACCESSORIES



BULL BAR

Part No: 3820

- To suit all makes
- Bumper replacement
- Air bag compliant



TOW BAR

Part No: 3830

- To suit all makes
- 7 pin flat plug wired to vehicle



DRIVING LIGHTS

Part No: 3860

- Bullbar mounted
- 55 Watt HID

SAFETY ACCESSORIES



SUSPENSION UPGRADE

Part No: 3840

- To suit most makes & models
- Coil & leaf
- Heavy duty shock absorbers



MINE FLAG

Part No: 3655

- Different designs available
- Quick release



WHEEL CHOCKS

Part No: 3835

- Complete with storage brackets
- Can be mounted externally or internally



REFLECTIVE MINING STRIPE

Part No: 3640

- 40mm wide
- Yellow diamond reflective tape



WHEEL NUT INDICATORS

Part No: 3660

- To suit all types of wheels



ROLL OVER PROTECTION SYSTEM

Part No: 3700

- Certified ROPS
- To suit most Cab - Chassis configurations
- CSM Procan Canopy compatible
- Includes beacon and flag mounts

VEHICLE SPECIFICATIONS

Vehicle Description		Canopy / Tray Length	Canopy / Tray Width	Canopy Height	Fuel Filler Position
FORD	RANGER DOUBLE CAB	1650/1800	1875	900/1000	PASSENGER SIDE FRONT
	RANGER SUPER CAB	1950/2100	1875	1000	PASSENGER SIDE FRONT
	RANGER SINGLE CAB	2400	1875	1000	PASSENGER SIDE FRONT
	FALCON	2250/2400	1825	900/1000	PASSENGER SIDE FRONT
	F250 CREW CAB	2250/2400	2025/2075	1000	PASSENGER SIDE FRONT
	F250 SUPER CAB	2550	2025/2075	1000	PASSENGER SIDE FRONT
	F250 REGULAR CAB	2700	2025/2075	1000	PASSENGER SIDE FRONT
HOLDEN	COLORADO CREW CAB	1650/1800	1825/1875	900/1000	PASSENGER SIDE FRONT
	COLORADO SPACE CAB	1950/2100	1825/1875	1000	PASSENGER SIDE FRONT
	COLORADO SINGLE CAB	2400	1825/1875	1000	PASSENGER SIDE FRONT
ISUZU	D-MAX CREW CAB	1650/1800	1825/1875	900/1000	PASSENGER SIDE FRONT
	D-MAX SINGLE CAB	2400	1825/1875	1000	PASSENGER SIDE FRONT
MAZDA	BT50 DUAL CAB	1650/1800	1825/1875	900/1000	PASSENGER SIDE FRONT
	BT50 FREESTYLE CAB	1950/2100	1825/1875	1000	PASSENGER SIDE FRONT
	BT50 SINGLE CAB	2400	1825/1875	1000	PASSENGER SIDE FRONT
MITSUBISHI	TRITON DOUBLE CAB	1650/1800	1825	900/1000	PASSENGER SIDE
	TRITON CLUB CAB	1950/2100	1825	1000	PASSENGER SIDE
	TRITON SINGLE CAB	2400	1825	1000	PASSENGER SIDE
NISSAN	D22 NAVARA DUAL CAB	1650	1825	900/1000	DRIVER SIDE FRONT
	D22 NAVARA SINGLE CAB	2400	1825	1000	DRIVER SIDE FRONT
	D40 NAVARA DUAL CAB	1650/1800	1825/1875	900/1000	PASSENGER SIDE FRONT
	D40 NAVARA KING CAB	1950/2100	1825/1875	1000	PASSENGER SIDE FRONT
	D40 NAVARA SINGLE CAB	2400	1825/1875	1000	PASSENGER SIDE FRONT
	PATROL LEAF SPRING	2400	1875/1925	1000	DRIVER SIDE FRONT & REAR
	PATROL COIL SPRING	2400	1875/1925	1000	DRIVER SIDE FRONT & REAR
TOYOTA	HILUX DOUBLE CAB	1650/1800	1825/1875	900/1000	PASSENGER SIDE FRONT
	HILUX EXTRA CAB	1950/2100	1825/1875	1000	PASSENGER SIDE FRONT
	HILUX SINGLE CAB	2400	1825/1875	1000	PASSENGER SIDE FRONT
	LANDCRUISER 70 DOUBLE CAB	1650/1800	1825/1875	1000/1150	DRIVER SIDE REAR
	LANDCRUISER 70 SINGLE CAB	2400	1825/1875	1000/1150	DRIVER SIDE REAR
VOLKSWAGEN	AMAROK DUAL CAB	1650/1800	1875	900/1000	PASSENGER SIDE FRONT
	AMAROK SINGLE CAB	2400	1875	1000	PASSENGER SIDE FRONT
CHEVROLET	SILVERADO 2500 DUAL CAB	2250/2400	2025/2075	1000	PASSENGER SIDE FRONT
	SILVERADO 2500 SINGLE CAB	2700	2025/2075	1000	PASSENGER SIDE FRONT

CANOPY SPECIFICATIONS

Features	FLEETPRO II	TRADEPRO II	METRO II
SINGLE CAB UTE	✓	✓	✓
EXTRA/SPACE CAB UTE	✓	✓	✓
TWIN/DUAL CAB UTE	✓	✓	✓
LIFT OFF	X	○	X
900 HIGH	○	○	X
1000 HIGH	S	S	S
1150 HIGH	○	○	X
2 X GULLWING SIDE DOORS	S	X	S
REAR DOOR	S	S	○
SPLIT DOOR	○	○	X
BI FOLD DOOR	○	○	X
DOOR LOCKS	E-ZEE LATCH (Slam Action)	REIGULLATCH (Turn Action)	S/S DROP T
CENTRAL LOCKING	S	○	X
DOOR OPEN ALERTS	S	○	X
INTERNAL LOCK COVER	S	S	X
PVC DOOR HINGE SEAL	S	S	S
FRONT WINDOW	○	○	○
REAR WINDOW	○	○	○
SIDE WINDOWS	○	○	X
SLIDING SIDE WINDOWS	○	X	X
WINDOW MESH	○	○	X
TAIL LIGHT CHANNEL	S	X	X
TAIL LIGHT BRACKETS	X	S	S
1 PIECE MUD GUARDS	S	X	X
4 PIECE SINGLE MUD GUARDS	X	S	S
EXT. WIRING ACCESS PANEL	S	S	X
INT. WIRING ACCESS HOLES	S	S	X
2 X INTERNAL LIGHTS (LED)	S	○	X
FLUSH DOOR SILLS	S	S	S
HORIZ. DOOR STIFFNERS	S	S	X
DOOR DRIPPERS	S	S	X
FIXED MOUNT ROOF RACKS	X	○	○
ROOF TRACKS	S	○	○
ROOF RACK CROSS BARS	○	○	○
ROOF RACK ACCESSORIES	○	○	○
COLOUR MATCHED UB BOXES	○	X	X
FRONT & REAR SKIRT PANELS	○	X	X
PAINT COLOUR	COLOUR MATCHED WHITE	040 WHITE	040 WHITE
COLOUR MATCHED COLOUR	○	○	X
COLOUR MATCHED METALLIC	○	○	X
FLUSH FLOOR TIE DOWNS	○	○	X
LED TAIL LIGHTS	○	○	X

✓ = AVAILABLE S = STANDARD X = NOT AVAILABLE ○ = OPTIONAL



HARD WORKING PRACTICALITY

Phone: 1800 618 332 Fax: 07 3715 7201

National Sales Office: 12 Gravel Pit Road, Darra, Brisbane Qld 4076

Email: sales@csmteam.com.au

www.csmteam.com.au