

Speedfit[®]

*The Push-Fit Solution for Plumbing,
Heating and Water Treatment*



INCLUDES NEW PRODUCTS:

- *Female Swivel Elbow*
- *CTS White Fittings*
- *Pre-Packed Products*
- *Flexi Hoses*

USA Plumbing Catalog

March 2015

THE PUSH-FIT SOLUTION FOR PLUMBING AND HEATING SYSTEMS

CONTENTS:

CTS JG TWIST & LOCK®
FITTINGS

p12-17



BRASS FITTINGS

p18



FEMALE SWIVEL
ELBOW

p18

NEW



PIPE AND ACCESSORIES

p19-20



PLUMBING AND HEATING
SINGLE PACK FITTINGS

p21-24



BLACK CTS JG TWIST &
LOCK® FITTINGS

p25-26



PLUMBING AND HEATING
TECHNICAL CHECKLIST

p27



POLYPROPYLENE FITTINGS

p31-36



POLYPROPYLENE VALVES

p37-39



ACCESSORIES

p40



POTABLE WATER SINGLE PACK FITTINGS

p41-43



LLDPE TUBING

p44-45



SERVICE & REPAIR KIT CONTRACTOR PAK FLEXI HOSES

p46

NEW



POTABLE WATER TECHNICAL CHECKLIST

p47





Worldwide Connections

The John Guest Group has a long established reputation as a world leading manufacturer of Push-fit fittings, tube and other fluid control products. A reputation built on producing consistently high quality products with an ongoing commitment to value engineering and product development.



Quality Manufacture

Both design and manufacture are carried out in John Guest's modern, purpose-built facilities in the United Kingdom.

Maintaining control over the entire process - from initial tool design and tool-making to final assembly and testing - ensures that only products of the highest quality are produced.

It is this commitment to quality that has resulted in the Company receiving prestigious awards from many of the world's leading testing and approvals organizations.

John Guest is a preferred supplier to many international companies.



THE PUSH-FIT SOLUTION FOR PLUMBING AND HEATING SYSTEMS

JG Speedfit® is an advanced Push-fit fitting featuring John Guest Twist & Lock® technology that is suitable for the plumbing of normal domestic hot and cold water systems. Speedfit® Fittings have been designed for use with Copper Pipe, Speedfit PEX Pipe, CPVC, and PEX Pipe conforming to US Plumbing Standards.

Performance specifications are well within those required for most normal domestic water supply systems including:


- **Hot and cold water distribution systems.**
- **Potable water distribution systems.**
- **Hydronic heating systems.**

Extensive tests have shown that Speedfit products will withstand temperatures and pressures in excess of normal working conditions. JG Speedfit® should be installed to conform with good plumbing practice.

PERFORMANCE BENEFITS:

- *John Guest Twist & Lock[®] for added security*
- *Approved for behind-the-wall installations*
- *Corrosion free*
- *No scale buildup*
- *Pipe flexibility permits the cabling of pipe through less accessible areas*
- *No blowtorch required*
- *A permanent leak-proof connection*
- *Lower thermal diffusivity maintains safer surface temperature*
- *Pipe elasticity can reduce the possibility of bursting under freezing conditions*
- *Lead free*
- *Less noise from water flow and expansion/contraction*
- *Long pipe lengths require fewer fittings*

INSTALLATION BENEFITS:

- *Works with Copper, CPVC, and PEX*
 - *No tools required*
 - *Installation time reduced by 40%*
 - *Grip and seal connection*
 - *Reduced pipe insertion force*
 - *Disassemble without damage to pipe or fitting*
 - *Easy to use in confined spaces*
- 

SPECIAL APPLICATIONS:

Boats: The flexibility of the Speedfit® System ensures it can be cabled easily around the interior and hidden from view.

RV: Speedfit® is ideal for RV installations due to its flexibility and its resistance to corrosion and freezing.

Exhibitions: The unique ability of the Speedfit® System to be easily disassembled and reused, together with its flexibility, makes Speedfit ideal for this application.

Portable Buildings (offices, bathrooms): As with RV's, Speedfit® is well suited for these applications.

Agricultural and Horticultural: Speedfit® has many applications in agricultural and horticultural environments.

HANDLING PIPE AND FITTINGS:

Ensure that the fittings and pipe are kept clean at all times by keeping them in the bags and box provided.

Do not empty Speedfit® products onto the floor area. Be sure to keep the internal O-ring seals free from dirt and debris.

PRODUCT SELECTION AND INSTALLATION:

John Guest Fittings and related products are specifically designed and manufactured by John Guest to the technical specifications set out in the John Guest Product Catalogs. All John Guest Fittings and related products should be selected, installed, used, and maintained in accordance with these Technical Specifications. It is the customer's/user's responsibility to ensure that John Guest Fittings and related products are suitable for their intended applications, are properly installed and maintained, and are used in accordance with the Technical Specifications. It is also the customer's/user's responsibility to provide its own customers with any relevant technical information about John Guest products it supplies them.

Speedfit® must not be used for gas, fuel oil or compressed air applications.

John Guest produces a specially designed push fit system of pipe and fittings for compressed air installations. See separate literature for details.

WORKING PRESSURES AND TEMPERATURES:

| Application | Max. Working Pressure | Max. Working Temperature |
|-------------|-----------------------|--------------------------|
| Water | 160 psi | 73°F |
| Water | 100 psi | 180°F |
| Water | 80 psi | 200°F |

WARRANTY:

As a result of long-term testing programs and rigorous quality standards John Guest USA offers a 25-year warranty against defects in materials or manufacturing of PEI, MWI, and PSEI ranges of plumbing fittings, and Speedfit Pipe manufactured by John Guest.

John Guest Plumbing Products are for use with normal domestic plumbing systems and supplied in accordance with our terms and conditions of sale.

STANDARDS AND AFFILIATIONS:



C
IAPMO UNIFORM
PLUMBING CODE

Speedfit® complies with the applicable sections of the latest edition of the Uniform Plumbing Code® and the International Plumbing Code®, including behind-the-wall installations. Refer to the applicable code listings for the latest information.



ESR-1931
PMG-1033

Speedfit® Products are manufactured in compliance with, ASTM F876, ASTM F877, CSA B137-5 and ASSE 1061.



NSF 14
NSF 61

PEI Speedfit® Fittings & Pipe have NSF/ANSI Standard 14 which demonstrates compliance with USA Plumbing Codes, cNSFus – which complies with Canada and US Standards, CSA – Canadian Standards, pw – potable water, rfh – radiant floor heating. All have NSF Standard 61 Certification for Drinking Water System Components and Materials which contact drinking water.

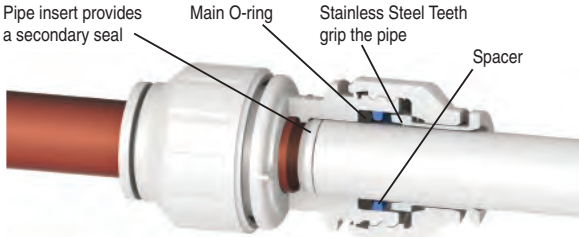


John Guest quality system is certified by BSI to BS EN ISO 9001.



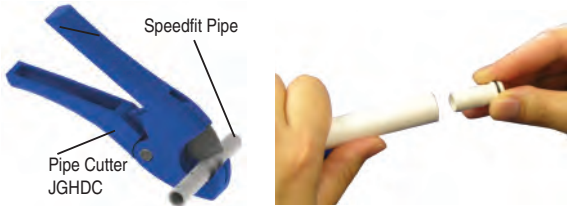
The Genuine JG symbol represents our commitment to our customers, and what the John Guest name means to business: Quality, Reliability, and Support.

MAKING A GOOD CONNECTION



John Guest Twist & Lock® Fittings have a collet with stainless steel teeth that grip the pipe when fully inserted, and an O-ring to provide a permanent leak-proof seal. The additional benefit of the JG Twist & Lock® fitting is that a twist of the screw-cap gives greater compression on the O-ring seal and locks the pipe in place for greater security.

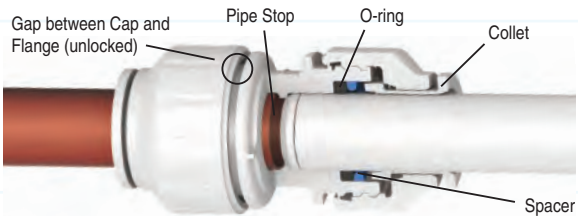
PREPARE THE PIPE



To prevent damage to the O-ring remove all burrs and sharp edges. When using Speedfit® or other types of PEX Pipe, we recommend the use of Pipe Inserts.

HOW TO MAKE A CONNECTION

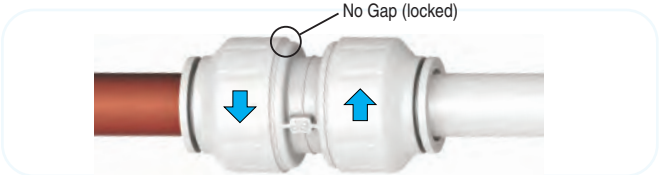
Fittings and Pipe should be kept clean, bagged, and undamaged before use.



The fitting should be in the 'unlocked' position. This is shown by a small gap between the screw-cap and the body flange.

For use with Copper, PEX and CPVC Pipe

Push the pipe into the fitting and up to the pipe stop.

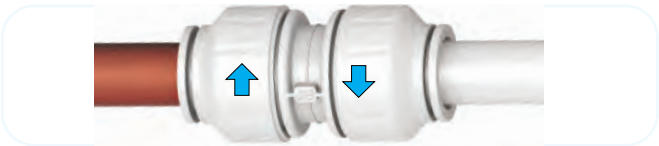


Twist the screw-cap until it touches the body flange. This locks the pipe into position and increases the O-ring seal around the pipe.

Pull to check that it is secure. It is good practice to test the system prior to leaving the site or before use. Our recommended test procedure is shown in our Technical Checklist.

TO DISCONNECT:

Ensure that the system is depressurized.



Be sure to twist the screw-cap back to the unlock position.

Push the collet square against the face of the fitting by using fingers. With the collet held in this position the pipe can be removed.



The fitting can be used again without the need for replacement parts. (Ensure the fitting is clean before every use).

WHAT NOT TO DO

- Do not use damaged or scored pipe
- Do not use a hacksaw to cut the pipe
- Do not leave burrs on the end of the pipe
- Do not forget to push the pipe fully into the fitting, past both the collet (gripper) and the O-ring.
- Do not insert fingers into the fitting as the stainless steel teeth may cause injury.



Remember to pressure test the completed installation according to the recommendations in our Technical Checklist.

CTS JG TWIST & LOCK® FITTINGS

FOR USE WITH COPPER, PEX AND CPVC PIPE



The PEI Range of JG Twist & Lock® Fittings is offered in 1/2", 3/4" and 1" CTS sizes. The fittings are manufactured from high quality engineered plastic with EPDM O-Rings. Speedfit Push-in System is suitable for hot and cold water plumbing applications.

Refer to pages 27 for detailed technical specifications.

Prices subject to change without notice.

TEE



| PART NO. | SIZE CTS | BAG QTY | BOX QTY |
|----------|-------------|------------|------------|
| PEI0220 | 1/2" | 5 | 25 |
| PEI0228 | 3/4" | 2 | 10 |
| PEI0236 | 1" | 1 | 5 |

ELBOW



| PART NO. | SIZE CTS | BAG QTY | BOX QTY |
|----------|-------------|------------|------------|
| PEI0320 | 1/2" | 5 | 40 |
| PEI0328 | 3/4" | 5 | 20 |
| PEI0336 | 1" | 1 | 10 |

REDUCING ELBOW



| PART NO. | SIZE CTS | BAG QTY | BOX QTY |
|-----------|-------------|------------|------------|
| PEI212820 | 3/4" x 1/2" | 5 | 25 |
| PEI213628 | 1" x 3/4" | 1 | 10 |

For use with Copper, PEX and CPVC Pipe

COUPLER



| PART NO. | SIZE CTS | BAG QTY | BOX QTY |
|----------|-------------|------------|------------|
| PEI0420 | 1/2" | 5 | 40 |
| PEI0428 | 3/4" | 5 | 25 |
| PEI0436 | 1" | 1 | 15 |

REDUCER



| PART NO. | SIZE STEM x CTS | BAG QTY | BOX QTY |
|-----------|--------------------|------------|------------|
| PEI062820 | 3/4" x 1/2" | 10 | 50 |
| PEI063628 | 1" x 3/4" | 5 | 30 |

REDUCING COUPLER



| PART NO. | SIZE CTS | BAG QTY | BOX QTY |
|-----------|-------------|------------|------------|
| PEI202820 | 3/4" x 1/2" | 5 | 30 |
| PEI203628 | 1" x 3/4" | 5 | 15 |

STEM ELBOW



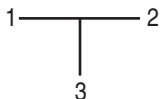
| PART NO. | SIZE STEM x CTS | BAG QTY | BOX QTY |
|-----------|--------------------|------------|------------|
| PEI222020 | 1/2" x 1/2" | 10 | 60 |
| PEI222828 | 3/4" x 3/4" | 5 | 25 |

Refer to pages 27 for detailed technical specifications.

REDUCING TEE



Sizes are listed
in the following order:



| PART NO. | SIZE CTS | BAG QTY | BOX QTY |
|----------|--------------------|------------|------------|
| PEI3028A | 3/4" x 3/4" x 1/2" | 5 | 15 |
| PEI3028B | 3/4" x 1/2" x 1/2" | 5 | 20 |
| PEI3028C | 1/2" x 1/2" x 3/4" | 5 | 20 |
| PEI3028D | 3/4" x 1/2" x 3/4" | 5 | 15 |
| PEI3036A | 1" x 1" x 3/4" | 1 | 10 |

STACKABLE TEE



| PART NO. | SIZE CTS | BAG QTY | BOX QTY |
|-----------|--------------------|------------|------------|
| PEI532020 | 1/2" x 1/2" x 1/2" | 5 | 30 |
| PEI532820 | 3/4" x 3/4" x 1/2" | 5 | 20 |
| PEI532828 | 3/4" x 3/4" x 3/4" | 1 | 15 |



Sizes for Stackable Tee are
listed in the following order:



Ideal for multi-port manifold.

NEW FEMALE CONNECTOR



| PART NO. | SIZE O.D. X UNEF | BAG QTY | BOX QTY |
|------------|---------------------|------------|------------|
| PSEI6012U9 | 3/8" x 9/16"-24 | 10 | 200 |

9/16 - 24 UNEF = 3/8 COMPRESSION THREADS

For use with Copper, PEX and CPVC Pipe

BURST PIPE REPAIR FITTING/SLIP CONNECTOR



| PART NO. | SIZE CTS | BAG QTY | BOX QTY |
|----------|-------------|------------|------------|
| 1/2SCP | 1/2" | 1 | 5 |
| 3/4SCP | 3/4" | 1 | 5 |

A quick and easy method of replacing burst or damaged pipe without the need to alter existing pipe work.

SLIP TEE CONNECTOR



| PART NO. | SIZE CTS | BAG QTY | BOX QTY |
|----------|-------------|------------|------------|
| 1/2TKP | 1/2" | 1 | 5 |
| 3/4TKP | 3/4" | 1 | 5 |

Note Tee Installation Kits do not have IAPMO or ICC approval. Provides a simple method of breaking into and branching off a rigid run without altering existing pipe work.

END CAP



| PART NO. | SIZE | BAG QTY | BOX QTY |
|------------------|------|------------|------------|
| PSEI4620 | 1/2" | 10 | 150 |
| PSEI4628 | 3/4" | 5 | 80 |
| PEI4636 | 1" | 5 | 30 |
| PSEI4620B (Blue) | 1/2" | 10 | 150 |
| PSEI4620R (Red) | 1/2" | 10 | 150 |
| PSEI4628B (Blue) | 3/4" | 5 | 80 |
| PSEI4628R (Red) | 3/4" | 5 | 80 |

The unique feature of the Speedfit concept is the ability to easily connect and disconnect the End Cap. End Caps also provide a leak-proof seal.

They can be used to temporarily "cap-off" installations for pressure testing and rough inspections.

With Speedfit End Caps there is no need for tools, sweating or threading. They can be used with plastic or copper pipe, and when new are reusable many times over.

EASY TO CONNECT



EASY TO DISCONNECT





Refer to pages 27 for detailed technical specifications.

Prices subject to change without notice.

FEMALE SWIVEL CONNECTOR



| PART NO. | SIZE CTS x NPS | BAG QTY | BOX QTY |
|------------|-------------------|------------|------------|
| PEISTC2034 | 1/2" x 1/2" | 10 | 50 |

Hand tighten only. No spanner required.

FEMALE SWIVEL ELBOW



| PART NO. | SIZE CTS x NPS | BAG QTY | BOX QTY |
|------------|-------------------|------------|------------|
| PEIBTC2034 | 1/2" x 1/2" | 10 | 50 |

Hand tighten only. No spanner required.

FEMALE BALLCOCK CONNECTOR



| PART NO. | SIZE CTS x UNS | BAG QTY | BOX QTY |
|-------------|----------------------|------------|------------|
| PEISTC20C75 | 1/2" x 7/8" - 15/16" | 10 | 50 |

Connects to toilet fill valve.

Hand tighten only. No spanner required.

FEMALE BALLCOCK ELBOW



| PART NO. | SIZE CTS x UNS | BAG QTY | BOX QTY |
|-------------|----------------------|------------|------------|
| PEIBTC20C75 | 1/2" x 7/8" - 15/16" | 10 | 50 |

Connects to toilet fill valve.

Hand tighten only. No spanner required.

For use with Copper, PEX and CPVC Pipe

Installation instructions are provided with the product and on our website www.jgspeedfit.com



MALE CONNECTOR



| PART NO. | SIZE CTS x NPT | BAG QTY | BOX QTY |
|------------|-------------------|------------|------------|
| PSEI012024 | 1/2" x 1/2" | 10 | 80 |
| PSEI012026 | 1/2" x 3/4" | 5 | 60 |
| PSEI012826 | 3/4" x 3/4" | 5 | 50 |
| PSEI013626 | 1" x 3/4" | 2 | 30 |
| PSEI013628 | 1" x 1" | 2 | 20 |

Only to be used with mating plastic threads.

FEMALE CONNECTOR



| PART NO. | SIZE CTS x NPS | BAG QTY | BOX QTY |
|------------|-------------------|------------|------------|
| PSEI452826 | 3/4" x 3/4" | 5 | 40 |
| PEI452034 | 1/2" x 1/2" | 5 | 50 |

MALE FIXED ELBOW



| PART NO. | SIZE CTS x NPT | BAG QTY | BOX QTY |
|------------|-------------------|------------|------------|
| PSEI482024 | 1/2" x 1/2" | 5 | 60 |

Only to be used with mating plastic threads.

SHUT-OFF VALVE •



| PART NO. | SIZE CTS | BAG QTY | BOX QTY |
|-----------|-------------|------------|------------|
| PSEISV20P | 1/2" | 1 | 100 |
| PSEISV28P | 3/4" | 1 | 75 |

Includes indicator arrow showing off position and 2 interchangeable buttons for color coding hot & cold water. 1/4 Turn Valves. These valves have been designed to allow temporary servicing of downstream equipment and must only be used in the fully open or fully closed position.

DO NOT USE THESE VALVES:

- In a partially open position to control flow.
- To provide a permanent termination.
- Without tubing assembled or plugged (or threaded connections sealed).
- As a tap or "faucet".

1/4 Turn Valves are indicated by this marker •

LEAD FREE BRASS PRODUCTS

FOR USE WITH COPPER, PEX AND CPVC PIPE



Prices subject to change without notice.

- Lead Free
- Dezincification Resistant

BRASS MALE CONNECTOR



| PART NO. | SIZE CTS x NPT | BAG QTY | BOX QTY |
|-------------|-------------------|------------|------------|
| MWI012024LF | 1/2" x 1/2" | 5 | 100 |
| MWI012026LF | 1/2" x 3/4" | 5 | 100 |
| MWI012826LF | 3/4" x 3/4" | 5 | 50 |

BRASS MALE STEM ADAPTER



| PART NO. | SIZE CTS x NPT | BAG QTY | BOX QTY |
|-------------|-------------------|------------|------------|
| MWI052024LF | 1/2" x 1/2" | 10 | 100 |
| MWI052826LF | 3/4" x 3/4" | 1 | 40 |

STANDARD BRASS

WING BACK ELBOW



| PART NO. | SIZE CTS x NPT | BAG QTY | BOX QTY |
|----------|-------------------|------------|------------|
| WBI2024 | 1/2" x 1/2" | 1 | 20 |

Not for potable water applications.

NEW

FEMALE SWIVEL ELBOW (GARDEN HOSE THREAD)



| PART NO. | SIZE OD x NH | BAG QTY | BOX QTY |
|----------|------------------|------------|------------|
| NC2723 | 3/8" x 3/4"-11.5 | 5 | 70 |

For use with Copper, PEX and CPVC Pipe

www.jgspeedfit.com

PIPE AND INSERTS



Refer to pages 27 for detailed technical specifications.

PEX PIPE

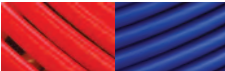


| PART NO. | SIZE CTS x FEET | BOX QTY |
|-----------------|--------------------|------------|
| US1/2PEX-100F-W | 1/2" x 100' | 1 |
| US3/4PEX-100F-W | 3/4" x 100' | 1 |

Coil pipe in 100 foot lengths. W denotes white color pipe. Red and Blue pipe available at the same price as white, use suffix R or B.



| PART NO. | SIZE CTS | BUNDLES |
|------------------|-------------|---------|
| US1/2PEX-10x10-W | 1/2" | 1 |
| US3/4PEX-10x10-W | 3/4" | 1 |
| US1PEX-10x10-W | 1" | 1 |



Bundles of ten 10-foot lengths. W denotes white color pipe. Red and Blue pipe available at the same price as white, use suffix R or B.

PIPE INSERT



| PART NO. | SIZE CTS | BAG QTY | BOX QTY |
|----------|-------------|------------|------------|
| TSI20 | 1/2" | 50 | 500 |
| TSI28 | 3/4" | 25 | 250 |
| TSI36 | 1" | 10 | 150 |

Products on this page are not listed with IAPMO.

NAIL CLIP



| PART NO. | SIZE CTS | BAG QTY | BOX QTY |
|----------|-------------|------------|------------|
| NPCI20 | 1/2" | 50 | 400 |
| NPCI28 | 3/4" | 50 | 250 |

PIPE CLIPS AND SPACER



| PART NO. PIPE CLIP | SIZE CTS | BAG QTY | BOX QTY |
|-----------------------|-------------|------------|------------|
| USCLIP20 | 1/2" | 50 | 200 |
| USCLIP28 | 3/4" | 50 | 100 |
| USCLIP36 | 1" | 20 | 80 |

PIPE CLIP SPACER

| | | | |
|------|--|----|-----|
| PCSW | | 50 | 400 |
|------|--|----|-----|

PIPE CUTTER



| PART NO. | SIZE CTS | BAG QTY | BOX QTY |
|----------|-------------|------------|------------|
| JG-TS | - | 1 | 30 |

HEAVY DUTY PIPE CUTTER



| PART NO. | SIZE CTS | BAG QTY | BOX QTY |
|-------------|-------------|------------|------------|
| JG HDC | - | 1 | 20 |
| BLADE JGHDC | - | 1 | 50 |

CTS JG TWIST & LOCK® FITTINGS

FOR USE WITH COPPER, PEX AND CPVC PIPE



SINGLE-PACKED



Prices subject to change without notice.

System Benefits:

- Twist & Lock for added security
- No Tools Required
- Works with Copper, CPVC and PEX Pipe
- A permanent leak-proof connection
- Plastic products are lead-free and corrosion-free
- Approved for behind the wall installations

Merchandising and Distribution Benefits:

- Strong Branding
- User Instructions on Bag
- Ziploc Bags
- English and Spanish Instructions
- Regional Sales Support

TEE



| PART NO. | SIZE CTS | BAG QTY |
|----------|-------------|------------|
| PEI0220P | 1/2" | 1 |
| PEI0228P | 3/4" | 1 |

ELBOW



| PART NO. | SIZE CTS | BAG QTY |
|----------|-------------|------------|
| PEI0320P | 1/2" | 1 |
| PEI0328P | 3/4" | 1 |

REDUCING ELBOW



| PART NO. | SIZE CTS | BAG QTY |
|------------|-------------|------------|
| PEI212820P | 3/4" x 1/2" | 1 |

COUPLER



| PART NO. | SIZE CTS | BAG QTY |
|----------|-------------|------------|
| PEI0420P | 1/2" | 1 |
| PEI0428P | 3/4" | 1 |

REDUCER



| PART NO. | SIZE STEM x CTS | BAG QTY |
|------------------------|--------------------|------------|
| PEI062820P | 3/4" x 1/2" | 1 |
| NEW PSEI062016P | 1/2" x 3/8" | 1 |

REDUCING COUPLER



| PART NO. | SIZE CTS | BAG QTY |
|------------|-------------|------------|
| PEI202820P | 3/4" x 1/2" | 1 |

SLIP TEE CONNECTOR



| PART NO. | SIZE CTS | BAG QTY |
|----------|-------------|------------|
| 1/2TKP | 1/2" | 1 |
| 3/4TKP | 3/4" | 1 |

Easily adds a branch to an existing line.

SLIP CONNECTOR/BURST PIPE REPAIR FITTING



| PART NO. | SIZE CTS | BAG QTY |
|----------|-------------|------------|
| 1/2SCP | 1/2" | 1 |
| 3/4SCP | 3/4" | 1 |

Designed for burst pipe repair.

REDUCING TEE



| PART NO. | SIZE CTS | BAG QTY |
|-----------|--------------------|------------|
| PEI3028AP | 3/4" x 3/4" x 1/2" | 1 |

For use with Copper, PEX and CPVC Pipe

www.jgspeedfit.com

SINGLE-PACKED

FEMALE SWIVEL ELBOW



| PART NO. | SIZE CTS x NPS | BAG QTY |
|-------------|-------------------|------------|
| PEIBTC2034P | 1/2" x 1/2" | 1 |

FEMALE SWIVEL CONNECTOR



| PART NO. | SIZE CTS x NPS | BAG QTY |
|-------------|-------------------|------------|
| PEISTC2034P | 1/2" | 1 |

Connects to toilet fill valve.

END CAP



| PART NO. | SIZE CTS | BAG QTY |
|-----------|-------------|------------|
| PSEI4620P | 1/2" | 1 |
| PSEI4628P | 3/4" | 1 |

PIPE INSERT



| PART NO. | SIZE CTS | BAG QTY |
|----------|-------------|------------|
| TSI20P | 1/2" | 10 |
| TSI28P | 3/4" | 5 |

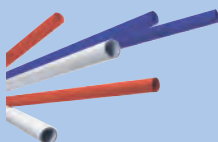
JG SPEEDFIT® PIPE

PEX PIPE



| PART NO. | SIZE CTS x FEET | BOX QTY |
|-----------------|--------------------|------------|
| US1/2PEX-100F-W | 1/2" x 100' | 1 |
| US3/4PEX-100F-W | 3/4" x 100' | 1 |

Coil pipe in 100 foot lengths. W denotes white color pipe. Red and Blue pipe available at the same price as white, use suffix R or B.



| PART NO. | SIZE CTS | BUNDLES |
|------------------|-------------|---------|
| US1/2PEX-10x10-W | 1/2" | 1 |
| US3/4PEX-10x10-W | 3/4" | 1 |
| US1PEX-10x10-W | 1" | 1 |

MALE CONNECTOR



| PART NO. | SIZE | BAG |
|-------------|-------------|-----|
| | CTS x NPT | QTY |
| PSEI012024P | 1/2" x 1/2" | 1 |
| PSEI012026P | 1/2" x 3/4" | 1 |
| PSEI012826P | 3/4" x 3/4" | 1 |

FEMALE CONNECTOR



| PART NO. | SIZE | BAG |
|-------------|-------------|-----|
| | CTS x NPS | QTY |
| PSEI452826P | 3/4" x 3/4" | 1 |

MALE FIXED ELBOW



| PART NO. | SIZE | BAG |
|-------------|-------------|-----|
| | CTS x NPT | QTY |
| PSEI482024P | 1/2" x 1/2" | 1 |

NEW

SHUT-OFF VALVE



| PART NO. | SIZE | BAG |
|-----------|-----------|-----|
| | CTS x CTS | QTY |
| PSEISV20P | 1/2" | 1 |
| PSEISV28P | 3/4" | 1 |

Includes indicator arrow showing off position and 2 interchangeable buttons for color coding hot & cold water. Firm 1/4 turn handle, prevents unwanted movement. These valves have been designed to allow temporary servicing of downstream equipment and must only be used in the fully open or fully closed position.

DO NOT USE THESE VALVES:

- In a partially open position to control flow.
- To provide a permanent termination.
- Without tubing assembled or plugged (or threaded connections sealed).
- As a tap or "faucet".

1/4 Turn Valves are indicated by this marker 

NEW

FLEXI HOSE



| PART NO. | SIZE | BAG |
|--------------|-----------------------------|-----|
| | | QTY |
| PSFC28N3618E | 3/4" CTS x 3/4" NPSM - 18"L | 1 |
| PSFC20N3618E | 1/2" CTS x 3/4" NPSM - 18"L | 1 |
| PSFC28C2818E | 3/4" CTS x 3/4" CTS - 18"L | 1 |

WORKING PRESSURES & TEMPERATURES

| | |
|-------------|---------------------------|
| Temperature | 160°F Max. -40°F Min. |
| Pressure | 125 psi Max. -20 psi Min. |

For use with Copper, PEX and CPVC Pipe

www.jgspeedfit.com

BLACK CTS JG TWIST & LOCK® FITTINGS

FOR USE WITH COPPER, PEX AND CPVC PIPE



The Black PEI Range of Twist & Lock Fittings is offered in 3/4" and 1" CTS sizes. They have been specifically designed for Water Filtration/Softener Installs; however, they are also suitable for Marine and R.V applications. The fittings are manufactured from high quality engineered plastic with EPDM O-rings. Speedfit Push-in system is suitable for hot and cold water plumbing applications.

Prices subject to change without notice.

NOT SUITABLE FOR GAS

Working Pressures and Temperatures:

Application: Water

| Max. Pressure | Max. Temperature |
|---------------|------------------|
| 160 psi | 73°F |
| 100 psi | 180°F |
| 80 psi | 200°F |

Do not use with gas, fuel oil or compressed air applications.

COUPLER



| PART NO. | SIZE CTS | BAG QTY | BOX QTY |
|----------|----------|---------|---------|
| PEI0428E | 3/4" | 5 | 25 |
| PEI0436E | 1" | 1 | 15 |

ELBOW



| PART NO. | SIZE STEM x CTS | BAG QTY | BOX QTY |
|----------|-----------------|---------|---------|
| PEI0328E | 3/4" | 5 | 20 |
| PEI0336E | 1" | 1 | 10 |

TEE



| PART NO. | SIZE CTS | BAG QTY | BOX QTY |
|----------|----------|---------|---------|
| PEI0228E | 3/4" | 2 | 10 |
| PEI0236E | 1" | 5 | 5 |

PLUG IN ELBOW



| PART NO. | SIZE CTS x STEM | BAG QTY | BOX QTY |
|------------|-----------------|---------|---------|
| PEI222828E | 3/4" x 3/4" | 5 | 25 |
| PEI223636E | 1" x 1" | 10 | 25 |

REDUCER COUPLER



| PART NO. | SIZE CTS | BAG QTY | BOX QTY |
|------------|-------------|------------|------------|
| PEI203628E | 1" x 3/4" | 5 | 15 |

MALE CONNECTOR



| PART NO. | SIZE CTS x NPT | BAG QTY | BOX QTY |
|-------------|-------------------|------------|------------|
| PSEI012024E | 1/2" x 1/2" | 10 | 80 |
| PSEI012026E | 1/2" x 3/4" | 5 | 60 |
| PSEI012826E | 3/4" x 3/4" | 5 | 50 |
| PSEI013626E | 1" x 3/4" | 2 | 30 |
| PSEI013628E | 1" x 1" | 2 | 20 |

Only to be used with mating plastic threads.

MALE STEM ADAPTER



| PART NO. | SIZE CTS STEM x NPT MALE | BAG QTY | BOX QTY |
|-------------|-----------------------------|------------|------------|
| PSEI052826E | 3/4" x 3/4" | 1 | 60 |
| PSEI053628E | 1" x 1" | 10 | 40 |

Only to be used with mating plastic threads.

MALE FIXED ELBOW



| PART NO. | SIZE CTS x NPT | BAG QTY | BOX QTY |
|-------------|-------------------|------------|------------|
| PSEI482024E | 1/2" x 1/2" | 5 | 60 |

Only to be used with mating plastic threads.

NEW FLEXI HOSE



| PART NO. | SIZE | BAG QTY |
|--------------|-----------------------------|------------|
| PSFC28N3618E | 3/4" CTS x 3/4" NPSM - 18"L | 1 |
| PSFC20N3618E | 1/2" CTS x 3/4" NPSM - 18"L | 1 |
| PSFC28C2818E | 3/4" CTS x 3/4" CTS - 18"L | 1 |

WORKING PRESSURES & TEMPERATURES

| | |
|-------------|---------------------------|
| Temperature | 160°F Max. -40°F Min. |
| Pressure | 125 psi Max. -20 psi Min. |

For use with Copper, PEX and CPVC Pipe

JG Speedfit® Technical Checklist

CTS - SPEEDFIT® TWIST & LOCK® (PEI AND PSEI RANGE) FOR PRODUCTS LISTED ON PAGES 12-26.

Fittings and pipe should be kept clean and undamaged before use.

- **Sizes:** 1/2" to 1" CTS.
- **Pipes:** Speedfit® fittings can be used with: PEX, Copper and CPVC Pipes conforming to ASTM Standards. Speedfit® fittings cannot be used on stainless steel pipe.
- **Standards:** Speedfit® products are designed and manufactured under a fully integrated system assessed by B.S.I. to BS EN ISO9001. Speedfit® PEI and PSEI Fittings and Speedfit® PEX Pipe are also NSF-14 and NSF-61, IAPMO and ICC listed.
- **Do not use for gas, fuel oil or compressed air applications.**
- **Working pressures and temperatures:**

| Application | Max. Pressure | Max. Temperature |
|-------------|---------------|------------------|
| Water | 160 psi | 73° F |
| Water | 100 psi | 180° F |
| Water | 80 psi | 200° F |

- **Burst Pressure (fittings):** Speedfit® fittings used with copper, CPVC or Speedfit® PEX Pipe will withstand pressures well in excess of normal service conditions.
- **Insulation:** Comply with code requirements.
- **Minimum bend radius (PEX):**

| Pipe Diameter | 1/2" CTS | 3/4" CTS |
|---------------|----------|----------|
| Min radius | 7" | 9" |

- **Clip spacing (in inches):**
For surface mounted pipes.

| Clip Spacing | | |
|---------------|----------------|--------------|
| Pipe Diameter | Horizontal Run | Vertical Run |
| 1/2" CTS | 16" | 20" |
| 3/4" CTS | 20" | 30" |
| 1" CTS | 30" | 36" |

- **Expansion (PEX Pipe):** 1% on length between 68°F and 180°F.
- **Flow rates:** Comparable with metal systems.
- **Cleaners, inhibitors and descalants:** For advice on the use of additives such as corrosion inhibitors, the additive manufacturers should be consulted.
- **Paint and Chemicals:** Only use water or oil based paint. DO NOT ALLOW CONTACT WITH cellulose based paints, paint thinners or strippers, solder flux or acid based descalants or aggressive household cleaning products.
DO NOT ALLOW CONTACT WITH jointing compounds, cellulose-based paints, paint thinners, paint strippers, solder flux, acid-based descalants or aggressive cleaning products.
- **Solder Flux:** No fluxes of any type should come into contact with Speedfit® products. Extreme care should be taken to ensure that no such contact takes place.
- **Chlorine:** Speedfit® is suitable for use with water supplies containing up to 4ppm of chlorine.
- **Exposure to light:** Speedfit® products, when used indoors, are not affected by sunlight. When used outdoors, protect from ultraviolet light by lagging or painting.
- **Pipe clips:** Pipe clips should not be fitted any closer than 2.5 inches from the end of the fitting. Pipe should be adequately supported by pipe clips to prevent undue stress (side load) on fittings.
- **Pipe inserts: Plumbing:** John Guest recommends the use of pipe inserts for PEX pipe connections with John Guest Speedfit® products in Standard Residential Plumbing (hot and cold water) installations.
Pipe inserts: Heating: John Guest requires the use of pipe inserts for PEX pipe connections with John Guest Speedfit® products in all Heating installations.
- **Metal joists:** When 'cabling' plastic pipe through metal joists, ensure rubber grommets are in place to prevent damage to the pipe.

- **Connection to boilers:** A minimum 36 inches run of copper pipe must be installed between the hot water heater and the Speedfit® system.
- **Connection to Hot Water Heater:** A minimum 18 inches run of copper pipe must be installed between the hot water heater and the Speedfit® System.
- **Connection to copper pipe:** 18 inches is the minimum distance to make a solder connection on copper pipe inserted into a Speedfit® fitting. Ensure that no solder flux comes into contact with the fitting.
- **Concrete and masonry:** Speedfit® pipe and fittings can be laid in concrete and masonry providing they are installed in conduit pipe with access boxes for the fittings. This is to enable the pipe to expand and provide accessibility for both pipe and fittings. Fittings and pipe should be removable for possible replacement. Insulation is also recommended to protect against heat loss and the effects of frost. Fittings not to be used underground.
- **Electrical continuity:** If Speedfit® is used in an existing metal system, electrical continuity must be reinstated.
- **System testing:** To ensure the pipework and fittings have been installed correctly, whether it be on a new or extended system, it is essential that the system be checked and hydraulically wet tested. Testing should be at 30 psi for 10 minutes and 150 psi for 10 minutes. This testing, combined with other relevant checks, should reveal installation problems and is regarded as good plumbing practice. However, system testing should not be regarded as a substitute for correct installation (see also "Making a Good Connection").
- **Disinfection of Hot and Cold Water Systems.** Speedfit® can be disinfected after installation or as part of a routine maintenance program. The disinfection procedure must comply with code requirements. Only disinfection solutions specifically recommended as suitable for contact with plastic plumbing systems and, where necessary, employing specialist contractors may be used with Speedfit®. Disinfection solutions must only come into contact with the internal (wet) surfaces of the system. If any normal dry surfaces of a Speedfit® fitting come into contact with disinfection solution the whole fitting must be replaced immediately. The disinfection solution must be immediately flushed out at all draw out points with fresh, clean water at the end of the disinfection period. The solution must not be left in the system.
- **System flushing:** As is usual practice for any plumbing installation, flushing of the system prior to the use of Speedfit® is recommended to remove any contaminants/chemical residue from elsewhere in the system.
- **Vermis:** Speedfit® products will need special protection in vermin infested areas.
- **Tube insertion depths:**

| | 1/2" CTS | 3/4" CTS | 1" CTS |
|-------------------------|----------|----------|--------|
| Twist and Lock Fittings | 1 1/4" | 1 5/8" | 1 5/8" |
| Test Caps | 1 1/8" | 1 1/2" | 1 1/2" |
| Brass Fittings | 1 1/8" | 1 1/2" | 1 1/2" |

- **Side Loads:** Fittings should not be subject to excessive side loads and they should not be used as support brackets. Tubing should be adequately supported to prevent excessive side loading.
- **Maximum torque values of threads:** in Ft lbs

| | | 1/2" NPT | 3/4" NPT | 1" NPT |
|---------|-----|----------|----------|--------|
| Plastic | NPT | 2 | 3 | 3 |
| Metal | NPT | 3 | 4 | 4 |

It is recommended that all installations are checked prior to use to determine that a seal has been made.

John Guest USA, Inc. is not responsible for misprints or typographical errors.



John Guest®

The Lead-Free Push-Fit Solution

PRODUCTS FOR WATER TREATMENT

CONTENTS:

POLYPROPYLENE
FITTINGS

p31-36



POLYPROPYLENE
VALVES

p37-39



ACCESSORIES

p40



POTABLE WATER
SINGLE-PACKED
FITTINGS

p41-43



LLDPE TUBING

p44-45



QUICK CONNECT
WATER SUPPLY/
ICE MAKER KIT

p46

NEW



TECHNICAL
CHECKLIST

p47



The Polypropylene Range is NOT suitable for compressed air or heating applications.

Products on pages 31-46 are not IAPMO Approved.

PRODUCTS FOR WATER TREATMENT

John Guest's Standard line of Push-fit Fittings, Shut-off Valves, and Polyethylene Tubing has been designed for use with a wide range of industrial plumbing applications involving Water Purification, Reverse Osmosis, Ice Makers, Beverage Dispensing, Vending & OCS, R.V. and Marine, Car Washing Systems and many more.

The fittings are simple to use and require no tools to make reliable, leak-free connections.

Standard Push-fit Fittings, Shut-Off Valves, and Polyethylene Tubing are produced from FDA compliant materials and are listed with NSF International; however, these fittings are not IAPMO approved and should not be used in traditional plumbing applications, or with compressed air, explosive gasses or other fuels, or heating systems.



MATERIALS OF CONSTRUCTION

John Guest Fittings are made up of three components:

Bodies are produced in acetal copolymer or polypropylene.

O-rings are produced in EPDM.

Collets are produced in acetal copolymer or polypropylene with stainless steel teeth.



▶ HOW TO MAKE A STANDARD CONNECTION

MAKING A GOOD CONNECTION

To make a connection, the tube is simply pushed in by hand; the unique patented John Guest collet locking system then holds the tube firmly in place without deforming it or restricting flow.

CUT THE TUBE SQUARE

Cut the tube square and remove burrs and sharp edges. Ensure that the outside diameter is free from score marks. For soft or thin-walled plastic tubing we recommend the use of a tube insert.



PUSH UP TO TUBE STOP

Push the tube into the fitting and up to the tube stop.



PULL TO CHECK SECURE

Pull on the tube to check that it is secure. Test the system before use.



TO DISCONNECT

Push in collet and remove tube.



To disconnect, ensure that the system is depressurized, push the collet square against the fitting. With the collet held in this position the tube can be removed.

INCH POLYPROPYLENE FITTINGS FOR POTABLE AND WATER TREATMENT APPLICATIONS

The PP Range of inch-size push-in fittings is offered for tube sizes 1/4" O.D. to 1/2" O.D. The fittings are manufactured in white polypropylene with food grade EPDM O-rings. They have been developed to satisfy the filtered pure water market and wide range of applications.

Prices subject to change without notice.

The PP Range is NOT suitable for compressed air or heating applications.

Working Pressures and Temperatures

| | | | | |
|-------|------|----------|----|----------------------------|
| Water | Max. | 150 psi | at | 70°F (Max. 10 Bar at 20°C) |
| | Max. | 60 psi | at | 140°F (Max. 4 Bar at 60°C) |
| | Min. | 33°F/1°C | | |

MALE CONNECTOR

NPTF THREAD



| PART NO. | TUBE OD | THREAD NPTF | BAG QTY | BOX QTY |
|-----------|---------|-------------|---------|---------|
| PP010821W | 1/4 | - 1/8 | 10 | 500 |
| PP010822W | 1/4 | - 1/4 | 10 | 400 |
| PP010823W | 1/4 | - 3/8 | 10 | 400 |
| PP011222W | 3/8 | - 1/4 | 10 | 250 |
| PP011223W | 3/8 | - 3/8 | 10 | 250 |
| PP011224W | 3/8 | - 1/2 | 10 | 250 |
| PP011623W | 1/2 | - 3/8 | 10 | 150 |
| PP011624W | 1/2 | - 1/2 | 10 | 150 |

UNION TEE



| PART NO. | TUBE OD | BAG QTY | BOX QTY |
|--------------|---------|---------|---------|
| PP0208W | 1/4 | 10 | 300 |
| PPM0208W | 5/16 | 10 | 200 |
| PP0212W | 3/8 | 10 | 100 |
| PP0216W | 1/2 | 10 | 80 |
| Blue Collet: | | | |
| PP0208W-B | 1/4 | 10 | 300 |

UNION ELBOW



| PART NO. | TUBE OD | BAG QTY | BOX QTY |
|--------------|---------|---------|---------|
| PP0308W | 1/4 | 10 | 400 |
| PPM0308W | 5/16 | 10 | 300 |
| PP0312W | 3/8 | 10 | 200 |
| PP0316W | 1/2 | 10 | 100 |
| Blue Collet: | | | |
| PP0308W-B | 1/4 | 10 | 400 |

UNION CONNECTOR



| PART NO. | TUBE OD | BAG QTY | BOX QTY |
|----------|---------|---------|---------|
| PP0408W | 1/4 | 10 | 400 |
| PPM0408W | 5/16 | 10 | 300 |
| PP0412W | 3/8 | 10 | 200 |
| PP0416W | 1/2 | 10 | 100 |

STEM ADAPTER

NPTF THREAD



| PART NO. | STEM OD | THREAD NPTF | BAG QTY | BOX QTY |
|-----------|---------|-------------|---------|---------|
| PP050821W | 1/4 | x 1/8 | 10 | 500 |
| PP050822W | 1/4 | x 1/4 | 10 | 500 |
| PP051222W | 3/8 | x 1/4 | 10 | 300 |
| PP051223W | 3/8 | x 3/8 | 10 | 200 |
| PP051623W | 1/2 | x 3/8 | 10 | 250 |
| PP051624W | 1/2 | x 1/2 | 10 | 200 |

REDUCER



| PART NO. | STEM OD | TUBE OD | BAG QTY | BOX QTY |
|-----------|---------|---------|---------|---------|
| PP061208W | 3/8 | - 1/4 | 10 | 400 |
| PP061612W | 1/2 | - 3/8 | 10 | 200 |
| PP062008W | 5/8 | - 1/4 | 10 | 200 |
| PP062012W | 5/8 | - 3/8 | 10 | 200 |
| PP062016W | 5/8 | - 1/2 | 10 | 150 |
| PP061210W | 3/8 | - 5/16 | 10 | 400 |



PLUG



| PART NO. | STEM OD | BAG QTY | BOX QTY |
|----------|------------|------------|------------|
| PP0808W | 1/4 | 10 | 500 |
| PPM0808W | 5/16 | 10 | 500 |
| PP0812W | 3/8 | 10 | 400 |
| PP0816W | 1/2 | 10 | 300 |

SWIVEL ELBOW

NPTF THREAD



| PART NO. | TUBE OD | THREAD NPTF | BAG QTY | BOX QTY |
|-----------|------------|----------------|------------|------------|
| PP090821W | 1/4 | x 1/8 | 10 | 300 |
| PP090822W | 1/4 | x 1/4 | 10 | 200 |
| PP091222W | 3/8 | x 1/4 | 10 | 100 |
| PP091223W | 3/8 | x 3/8 | 10 | 100 |

SWIVEL BRANCH TEE

CENTER LEG NPTF THREAD



| PART NO. | TUBE OD | THREAD NPTF | BAG QTY | BOX QTY |
|-----------|------------|----------------|------------|------------|
| PP100821W | 1/4 | x 1/8 | 10 | 200 |
| PP100822W | 1/4 | x 1/4 | 10 | 200 |
| PP101222W | 3/8 | x 1/4 | 10 | 100 |
| PP101223W | 3/8 | x 3/8 | 10 | 100 |

SWIVEL MALE RUN TEE

NPTF THREAD



| PART NO. | TUBE OD | THREAD NPTF | BAG QTY | BOX QTY |
|-----------|------------|----------------|------------|------------|
| PP110821W | 1/4 | x 1/8 | 10 | 200 |
| PP110822W | 1/4 | x 1/4 | 10 | 200 |
| PP111222W | 3/8 | x 1/4 | 10 | 100 |
| PP111223W | 3/8 | x 3/8 | 10 | 100 |

BULKHEAD UNION



| PART NO. | TUBE OD | MOUNTING HOLE Ø | BAG QTY | BOX QTY |
|----------|---------|-----------------|---------|---------|
| PP1208W | 1/4 | 0.67 | 10 | 200 |
| PP1212W | 3/8 | 0.83 | 10 | 100 |
| PP1216W | 1/2 | 1.06 | 5 | 50 |

Polypropylene Bulkhead Unions are not intended for submerged use.

REDUCING BULKHEAD UNION



| PART NO. | TUBE OD | TUBE OD | MOUNTING HOLE Ø | BAG QTY | BOX QTY |
|-----------|---------|---------|-----------------|---------|---------|
| PP121208W | 3/8 | - 1/4 | 0.83 | 10 | 150 |

REDUCING UNION CONNECTOR



| PART NO. | TUBE OD | TUBE OD | BAG QTY | BOX QTY |
|-----------|---------|---------|---------|---------|
| PP201208W | 3/8 | - 1/4 | 10 | 250 |
| PP201612W | 1/2 | - 3/8 | 10 | 150 |

REDUCING ELBOW



| PART NO. | TUBE OD | TUBE OD | BAG QTY | BOX QTY |
|-----------|---------|---------|---------|---------|
| PP211008W | 5/16 | - 1/4 | 10 | 300 |
| PP211208W | 3/8 | - 1/4 | 10 | 200 |
| PP211612W | 1/2 | - 3/8 | 10 | 150 |

PLUG-IN ELBOW



| PART NO. | STEM OD | TUBE OD | BAG QTY | BOX QTY |
|-------------|---------|---------|---------|---------|
| PP220808W | 1/4 | - 1/4 | 10 | 500 |
| PPM220808W | 5/16 | - 5/16 | 10 | 400 |
| PP221208W | 3/8 | - 1/4 | 10 | 300 |
| PP221212W | 3/8 | - 3/8 | 10 | 200 |
| PP221616W | 1/2 | - 1/2 | 10 | 150 |
| Blue Collet | | | | |
| PP221212W-B | 3/8 | - 3/8 | 10 | 200 |



TWO WAY DIVIDER



| PART NO. | TUBE OD | BAG QTY | BOX QTY |
|----------|---------|---------|---------|
| PP2312W | 3/8 | 10 | 150 |

NEW

UNEQUAL TWO WAY DIVIDER



| PART NO. | TUBE OD INLET | TUBE OD OUTLET | BAG QTY | BOX QTY |
|-----------|---------------|----------------|---------|---------|
| PP241208W | 3/8 | x 1/4 | 10 | 200 |

TUBE TO HOSE STEM



| PART NO. | STEM OD | HOSE ID | BAG QTY | BOX QTY |
|-----------|---------|---------|---------|---------|
| PP251212W | 3/8 | - 3/8 | 10 | 400 |
| PP251216W | 3/8 | - 1/2 | 10 | 300 |
| PP251612W | 1/2 | - 3/8 | 10 | 300 |
| PP251616W | 1/2 | - 1/2 | 10 | 250 |

REDUCING TEE



| PART NO. | TUBE OD END | TUBE OD END | TUBE OD BRANCH | BAG QTY | BOX QTY |
|-------------|-------------|-------------|----------------|---------|---------|
| PP30080812W | 1/4 | x 1/4 | x 3/8 | 10 | 150 |
| PP30120812W | 3/8 | x 1/4 | x 3/8 | 10 | 150 |
| PP30121208W | 3/8 | x 3/8 | x 1/4 | 10 | 150 |
| PP301612W | 1/2 | x 1/2 | x 3/8 | 10 | 50 |

FIXED TEE ADAPTER



| PART NO. | TUBE OD END | TUBE OD END | NPT BRANCH | BAG QTY | BOX QTY |
|-----------|-------------|-------------|------------|---------|---------|
| PP641223W | 3/8 | x 3/8 | x 3/8 | 10 | 150 |

FAUCET CONNECTOR
UNS THREAD


| PART NO. | TUBE OD | THREAD UNS | BAG QTY | BOX QTY |
|-----------|---------|-------------|---------|---------|
| PP3208U7W | 1/4 | x 7/16 - 24 | 10 | 400 |
| PP3212U7W | 3/8 | x 7/16 - 24 | 10 | 300 |

7/16 - 24 UNS = 1/4 COMPRESSION THREADS

FEMALE ADAPTER
NPTF THREAD


| PART NO. | TUBE OD | THREAD NPTF | BAG QTY | BOX QTY |
|-----------|---------|-------------|---------|---------|
| PP450821W | 1/4 | x 1/8 | 10 | 400 |
| PP450822W | 1/4 | x 1/4 | 10 | 200 |
| PP451222W | 3/8 | x 1/4 | 10 | 200 |
| PP451223W | 3/8 | x 3/8 | 10 | 150 |

FIXED ELBOW
NPTF THREAD


| PART NO. | TUBE OD | THREAD NPTF | BAG QTY | BOX QTY |
|-----------|---------|-------------|---------|---------|
| PP480821W | 1/4 | x 1/8 | 10 | 500 |
| PP480822W | 1/4 | x 1/4 | 10 | 400 |
| PP480823W | 1/4 | x 3/8 | 10 | 300 |
| PP481222W | 3/8 | x 1/4 | 10 | 200 |
| PP481223W | 3/8 | x 3/8 | 10 | 200 |

THREE WAY DIVIDER


| PART NO. | TUBE OD INLET | TUBE OD OUTLET | BAG QTY | BOX QTY |
|-----------|---------------|----------------|---------|---------|
| PP491208W | 3/8 | x 1/4 | 10 | 150 |

STACKABLE TEE CONNECTOR


| PART NO. | TUBE OD END | TUBE OD END | TUBE OD BRANCH | BAG QTY | BOX QTY |
|-----------|-------------|-------------|----------------|---------|---------|
| PP531212W | 3/8 | x 3/8 | x 3/8 | 10 | 150 |

1/2" INCH POLYPROPYLENE SHUT-OFF VALVES

The PPSV Range of Shut-Off Valves is offered for tube sizes 1/4" O.D. and 3/8" O.D., produced in polypropylene and fitted with EPDM O-rings. Polypropylene has the advantage of being more chemically resistant than acetal.

The valves are for use with potable water. For use with other potable liquids please contact our Technical Support Department for guidance.

The valves are not to be used with compressed air, explosive gases, petroleum spirits and other fuels or for heating systems.

Prices subject to change without notice.

Working Pressures and Temperatures

| | | | | |
|-------|------|----------|----|----------------------------|
| Water | Max. | 150 psi | at | 70°F (Max.10 bar at 20°C) |
| | Max. | 60 psi | at | 140°F (Max. 4 bar at 60°C) |
| | Min. | 33°F/1°C | | |



SPEEDFIT TO MALE •

NPTF THREAD



| PART NO. | TUBE OD | THREAD | THREAD NPTF | BAG QTY | BOX QTY |
|-------------|---------|--------|-------------|---------|---------|
| PPSV010822W | 1/4 | x | 1/4 | 10 | 200 |
| PPSV011223W | 3/8 | x | 3/8 | 10 | 100 |

SPEEDFIT TO SPEEDFIT •



| PART NO. | TUBE OD | BAG QTY | BOX QTY |
|-------------|---------|---------|---------|
| PPSV040808W | 1/4 | 10 | 200 |
| PPSV041212W | 3/8 | 10 | 80 |

SPEEDFIT TO FEMALE •

NPTF THREAD



| PART NO. | TUBE OD | THREAD | THREAD NPTF | BAG QTY | BOX QTY |
|-------------|---------|--------|-------------|---------|---------|
| PPSV500822W | 1/4 | x | 1/4 | 10 | 200 |
| PPSV501222W | 3/8 | x | 1/4 | 10 | 100 |

NEW

SPEEDFIT TO FEMALE •

NPTF THREAD



| PART NO. | TUBE OD | THREAD | THREAD NPTF | BAG QTY | BOX QTY |
|-------------|---------|--------|-------------|---------|---------|
| PPSV451223W | 3/8 | x | 3/8 | 10 | — |

1/4 Turn Valves. These valves have been designed to allow temporary servicing of downstream equipment and must only be used in the fully open or fully closed position. DO NOT USE THESE VALVES:

- In a partially open position to control flow.
- To provide a permanent termination.
- Without tubing assembled or plugged (or threaded connections sealed).
- As a tap or "faucet".

1/4 Turn Valves are indicated by this marker •

1/2" POLYPROPYLENE ANGLE STOP ADAPTER VALVES

The ASVPP Range of inch-size Angle Stop Adapter Valves is offered in white polypropylene with food grade EPDM O-rings. Our Angle Stop Adapter Valve connects between your valve and riser, to the main water supply line, for applications in Reverse Osmosis, Filtration Systems, Automatic Coffee Brewers, Ice-makers, and many more. Please refer to our Technical Support Department for guidance on use with other potable liquids.

The valves are not to be used with compressed air, explosive gases, petroleum spirits and other fuels, or for heating systems.

FOR USE WITH COLD WATER SUPPLY ONLY.



Prices subject to change without notice.

Working Pressures and Temperatures

| | | | | |
|-------|------|----------|----|-----------------------|
| Water | Max. | 150 psi | at | 70°F (10 bar at 20°C) |
| | Min. | 33°F/1°C | | |

ANGLE STOP ADAPTER VALVE •



| PART NO. | THREAD | | TUBE OD | BAG QTY | BOX QTY |
|-----------|---------------------|-----------------------|------------|------------|------------|
| | MALE COMPRESSION | FEMALE COMPRESSION | | | |
| *ASVPP1LF | 3/8" | x 3/8" | 1/4" | 1 | 30 |
| *ASVPP2LF | 3/8" | x 3/8" | 3/8" | 1 | 30 |

ANGLE STOP ADAPTER VALVE • CONVERSION THREAD

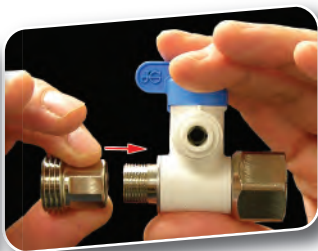


| PART NO. | THREAD | | TUBE OD | BAG QTY | BOX QTY |
|-----------|--------------------|-----------------------|------------|------------|------------|
| | MALE FEMALE NPS | THREAD COMPRESSION | | | |
| *ASVPP5LF | 1/2" | x 3/8" | 1/4" | 1 | 30 |
| *ASVPP6LF | 1/2" | x 3/8" | 3/8" | 1 | 30 |

1/4 Turn Valves. These valves have been designed to allow temporary servicing of downstream equipment and must only be used in the fully open or fully closed position. DO NOT USE THESE VALVES:

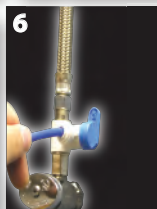
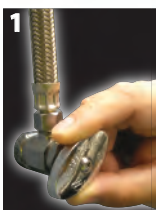
- In a partially open position to control flow.
- To provide a permanent termination.
- Without tubing assembled or plugged (or threaded connections sealed).
- As a tap or "faucet".

1/4 Turn Valves are indicated by this marker •



Conversion Adapter can be threaded to either side of the valve to make configurations of 1/2" x 1/2" NPS or 3/8" x 3/8" Compression.

How to connect the Angle Stop Adapter Valve



1. Shut-off water supply at brass/chrome supply valve.
2. Disconnect riser from brass/chrome supply valve.
3. Ensure that the sealing gasket is fully inserted into the Angle Stop Valve female thread.
4. Install Angle Stop Adapter Valve on supply valve.
5. Connect the riser to the Angle Stop Adapter Valve.
6. Fully insert tubing into the Speedfit side of the valve.
7. Open valves and check for leaks.

ACCESSORIES

TUBE CUTTER



| PART NO. | BAG QTY | BOX QTY |
|-------------|---------|---------|
| TSNIP | 50 | 1 |
| BLADES ONLY | 300 | 10 |

COLLET LOCKING/RELEASE TOOL



| PART NO. | SIZE | BAG QTY | BOX QTY |
|----------|-------------|---------|---------|
| ICLT/2 | 3/16 to 1/2 | 50 | 10 |
| TSPITool | 1/4, 3/8 | 50 | 10 |

LOCKING CLIPS



| PART NO. | CLIPS | BAG QTY | BOX QTY |
|----------|-------|---------|---------|
| PIC1808R | 1/4 | 100 | 5000 |
| PIC1812R | 3/8 | 100 | 1000 |
| PIC1816R | 1/2 | 100 | 2000 |
| Metric | | | |
| PMC1808R | 8mm | 100 | 8000 |



Secures the collet in its position to prevent an accidental disconnection of the tube.

Locking Clips should be connected only after full insertion to prevent scraping of the tube. Locking Clips are not designed for use with John Guest Stem Adaptors in swivel combinations.

1/2" POLYPROPYLENE FITTINGS

FOR POTABLE WATER AND WATER TREATMENT

SINGLE-PACKED



System Benefits:

- Quick connect and Disconnect
- Easy to use in confined spaces
- No Tools Required
- A permanent leak-proof connection
- Plastic products are lead-free and corrosion-free

Merchandising and Distribution Benefits:

- Strong Branding
- User Instructions on Bag
- Ziploc Bags
- English and Spanish Instructions
- Regional Sales Support

Prices subject to change without notice.

MALE CONNECTOR

NPTF THREAD



| PART NO. | TUBE OD X NPTF | BAG QTY |
|------------|----------------|---------|
| PP010822WP | 1/4" x 1/4" | 1 |
| PP010823WP | 1/4" x 3/8" | 1 |
| PP011223WP | 3/8" x 3/8" | 1 |

SIZES: TUBE OD x THREAD NPT

UNION TEE



| PART NO. | TUBE OD | BAG QTY |
|----------|---------|---------|
| PP0208WP | 1/4" | 1 |
| PP0212WP | 3/8" | 1 |

UNION ELBOW



| PART NO. | TUBE OD | BAG QTY |
|----------|---------|---------|
| PP0308WP | 1/4" | 1 |
| PP0312WP | 3/8" | 1 |

UNION CONNECTOR



| PART NO. | TUBE OD | BAG QTY |
|----------|---------|---------|
| PP0408WP | 1/4" | 1 |
| PP0412WP | 3/8" | 1 |

REDUCING CONNECTOR



| PART NO. | TUBE OD | BAG QTY |
|------------|-------------|---------|
| PP201208WP | 3/8" x 1/4" | 1 |

REDUCING TEE



| PART NO. | TUBE OD | BAG QTY |
|--------------|--------------------|---------|
| PP30121208WP | 3/8" x 3/8" x 1/4" | 1 |

SIZES: TUBE OD END x TUBE OD END x TUBE OD BRANCH

FAUCET CONNECTOR

UNS THREAD



| PART NO. | TUBE OD X UNS | BAG QTY |
|------------|-----------------|---------|
| PP3208U7WP | 1/4" x 7/16"-24 | 1 |
| PP3212U7WP | 3/8" x 7/16"-24 | 1 |

SIZES: TUBE OD x THREAD UNS
7/16 - 24 UNS = 1/4 COMPRESSION THREADS

REDUCER



| PART NO. | SIZE STEM OD X TUBE OD | BAG QTY |
|------------|------------------------|---------|
| PP061208WP | 3/8" x 1/4" | 1 |

TUBE CUTTER



| PART NO. | BAG QTY |
|----------|---------|
| TSNIP-US | 1 |

SINGLE-PACKED

STRAIGHT SHUT-OFF VALVE •



| PART NO. | TUBE OD | BAG QTY |
|--------------|---------|---------|
| PPSV040808WP | 1/4 | 1 |
| PPSV041212WP | 3/8 | 1 |

ELBOW SHUT-OFF VALVE •

NPTF THREAD



| PART NO. | TUBE OD | THREAD NPTF | BAG QTY |
|--------------|---------|-------------|---------|
| PPSV500822WP | 1/4 | x 1/4 | 1 |
| PPSV501222WP | 3/8 | x 1/4 | 1 |

ANGLE STOP ADAPTER VALVE •

Lead Free



| PART NO. | THREAD MALE COMPRESSION | THREAD FEMALE COMPRESSION | TUBE OD | BAG QTY |
|----------|-------------------------|---------------------------|---------|---------|
| ASVPP1LF | 3/8" x | 3/8" x | 1/4" | 1 |
| ASVPP2LF | 3/8" x | 3/8" x | 3/8" | 1 |
| ASVPP5LF | 1/2" x | 3/8" x | 1/4" | 1 |
| ASVPP6LF | 1/2" x | 3/8" x | 3/8" | 1 |

1/4 Turn Valves. These valves have been designed to allow temporary servicing of downstream equipment and must only be used in the fully open or fully closed position. DO NOT USE THESE VALVES:

- In a partially open position to control flow.
- To provide a permanent termination.
- Without tubing assembled and plugged (or threaded connections sealed).
- As a tap or "faucet".

1/4 Turn Valves are indicated by this marker •

NEW LLDPE TUBING (New Smaller Coils)



| PART NO. | SIZE OD | COIL LENGTHS | BAG QTY | BOX QTY |
|-----------------|---------|--------------|---------|---------|
| PE-08-BI-025F-B | 1/4" | 25' | 1 | 20 |
| PE-08-BI-025F-N | 1/4" | 25' | 1 | 20 |
| PE-08-BI-025F-E | 1/4" | 25' | 1 | 20 |
| PE-08-BI-050F-B | 1/4" | 50' | 1 | 12 |
| PE-08-BI-050F-N | 1/4" | 50' | 1 | 12 |
| PE-08-BI-100F-B | 1/4" | 100' | 1 | 8 |
| PE-08-BI-100F-N | 1/4" | 100' | 1 | 8 |

NEW WATER SUPPLY KIT



| PART NO. | BAG QTY | BOX QTY |
|---------------|---------|---------|
| ICE MAKER KIT | 1 | 12 |
| WSK-W (White) | 1 | 12 |
| WSK-B (Blue) | 1 | 12 |

Includes: 25 feet 1/4" LLDPE Tubing, (1) 1/4" Supply Valve, (1) 1/4" Connector.

INCH POLYETHYLENE TUBING

LLDPE TUBING

The John Guest PE Range of plastic tubing is produced in Linear Low Density Polyethylene for cold and intermittent hot water applications. Our tubing is made from FDA compliant materials and is NSF International Standard 51 & 61 certified. John Guest LLDPE Tubing provides excellent resistance to environmental stress cracking as measured by ASTM D-1693 (10% IGEPAL).

John Guest Polyethylene tubing is designed for use with John Guest Super Speedfit push-in fittings, John Guest Shut-Off Valves and virtually all standard tubing connectors.

| PART NO. | OD | COIL LENGTH | MINI BEND RADII | BOX QTY. |
|----------------------|-------|-------------|-----------------|----------|
| PE-08-BI-0500F-N | 1/4" | 500 FT | 1.00" | 2 |
| PE-08-BI-1000F-N* | 1/4" | 1000 FT | 1.00" | 1 |
| NEW PE-08-BI-3000F-E | 1/4" | 3000 FT | 1.00" | 1 |
| PE-10-CI-0500F-N | 5/16" | 500 FT | 1.13" | 1 |
| PE-12-EI-0500F-N | 3/8" | 500 FT | 1.25" | 1 |
| PE-16-GI-0250F-N | 1/2" | 250 FT | 2.50" | 1 |
| PE-04025-0100M-N | 4mm | 100m | 25mm | 2 |
| PE-0604-0100M-N | 6mm | 100m | 25mm | 2 |
| NEW PE-0604-0300H-E | 6mm | 300m | 25m | 1 |
| PE-0806-100M-N | 8mm | 100m | 30mm | 2 |
| PE-1007-100M-N | 10mm | 100m | 32mm | 1 |
| PE-1209-100M-N | 12mm | 100m | 63mm | 1 |
| PE-15115-0100M-B | 15mm | 100m | 100mm | 2 |

* Not Available in Green, Suffix (G)

N denotes natural color. To order other colors please use suffix:

B=Blue, R=Red, E=Black, W=White, G=Green, Y=Yellow, O=Orange, and V=Violet



COLORS AVAILABLE

| SUFFIX | COLOR | SIZES | | | | | | | | | |
|--------|---------|-------|-------|------|------|-----|-----|-----|------|------|------|
| | | 1/4" | 5/16" | 3/8" | 1/2" | 4mm | 6mm | 8mm | 10mm | 12mm | 15mm |
| N | NATURAL | ✓ | ✓ | ✓ | ✓ | ✓ | ✓ | ✓ | ✓ | ✓ | ○ |
| W | WHITE | ✓ | ○ | ✓ | ✓ | ○ | ○ | ✓ | ○ | ○ | ○ |
| B | BLUE | ✓ | ✓ | ✓ | ✓ | ✓ | ✓ | ✓ | ✓ | ✓ | ✓ |
| E | *BLACK | ✓ | ✓ | ✓ | ✓ | ✓ | ✓ | ✓ | ✓ | ✓ | ○ |
| R | RED | ✓ | ✓ | ✓ | ✓ | ✓ | ✓ | ✓ | ✓ | ✓ | ✓ |
| O | ORANGE | ✓ | ○ | ✓ | ○ | ○ | ○ | ○ | ○ | ○ | ○ |
| V | VIOLET | ✓ | ○ | ✓ | ○ | ○ | ○ | ○ | ○ | ○ | ○ |
| G | GREEN | ✓ | ○ | ✓ | ○ | ○ | ○ | ○ | ○ | ○ | ✓ |
| Y | YELLOW | ✓ | ○ | ✓ | ○ | ○ | ○ | ○ | ○ | ○ | ○ |

* Black tubing is UV stabilized.

✓ Denotes standard colors available.

○ Denotes optional colors which may be available based on order quantity.

INCH POLYETHYLENE TUBING

WORKING PRESSURES AND TEMPERATURES - LLDPE

| TUBE OD | TUBE ID | | TUBE OD | TUBE ID | |
|---------|----------|-----------------|---------|----------|----------------|
| 1/4" | x 0.170" | 230 psi @ 70°F | 1/2" | x 0.375" | 150 psi @ 70°F |
| 5/16" | x 0.187" | 15 bar @ 20°C | 8mm | x 6mm | 10 bar @ 20°C |
| 3/8" | x 0.25" | | 10mm | x 7mm | |
| 4mm | x 2.5mm | 120 psi @ 150°F | 12mm | x 9mm | 90 psi @ 150°F |
| 6mm | x 4mm | 8 bar @ 65°C | 15mm | x 11.5mm | 6 bar @ 65°C |

1 Bar = 14.5 psi (approx.)

Maximum Working Temperature 150°F at pressures shown in chart above. For temperatures above 150°F customers should contact our Technical Support Department.

Please note maximum pressure rating for a 'system' depends on the lowest rated component, e.g., most John Guest fittings have a different rating from the tube ratings shown above.

Burst Pressures are approximately 3 times the maximum working pressure.

CHEMICAL RESISTANCE

For use with chemicals or potentially aggressive liquids, please refer to our Technical Service Department.

NOTE: When using cleaning agents or other potentially aggressive liquids, please ensure compatibility with tubing and fittings. LLDPE is not recommended for mineral oils, gases and fuels or high pressure compressed air / pneumatic systems.

EXPOSURE TO ULTRAVIOLET LIGHT

John Guest Black LLDPE tubing is UV stabilized and can be exposed to direct ultraviolet light (e.g. direct sunlight); other colors of John Guest LLDPE tubing are not UV stabilized and cannot be exposed to direct ultraviolet light.

PNEUMATICS APPLICATIONS

John Guest LLDPE tube is suitable for pneumatic applications providing pressure is maximum 150 psi @ 70°F (10 bar @ 20°C). At elevated temperatures 120°F+ (50°C+) mineral oil will degrade LLDPE tube and, therefore, LLDPE tube used in pneumatic circuits should be periodically checked and replaced if necessary.

TUBE TOLERANCES

| | |
|--------------|----------------|
| 1/4" to 1/2" | +0.001/-0.004" |
| 4mm to 6mm | +0.05/-0.07mm |
| 8mm to 12mm | +0.05/-0.10mm |
| 15mm | +0.10/-0.10mm |

NEW PRODUCTS



SERVICE AND REPAIR KIT



PART NO.

KIT-ISRK

SERVICE AND REPAIR KIT INCLUDES:

| PART NO. | DESCRIPTION | BOX QTY |
|--------------|----------------------------|---------|
| PP010822W | 1/4 X 1/4 MALE CON | 5 |
| PP011222W | 3/8 X 1/4 MALE CON | 5 |
| PP011223W | 3/8 X 3/8 MALE CON | 5 |
| PP0208W | 1/4 TEE | 5 |
| PP0212W | 3/8 TEE | 5 |
| PP0308W | 1/4 ELBOW | 5 |
| PP0312W | 3/8 ELBOW | 5 |
| PP0408W | 1/4 UNION | 5 |
| PP0412W | 3/8 UNION | 5 |
| PP061208W | 3/8 - 1/4 REDUCER | 5 |
| PP201208W | 3/8 - 1/4 REDUCING UNION | 5 |
| PP220808W | 1/4 X 1/4 PLUG-IN ELBOW | 5 |
| PP221212W | 3/8 X 3/8 PLUG-IN ELBOW | 5 |
| PP3208U7W | 1/4 X 1/4 FEM COMP | 5 |
| PP3212U7W | 3/8 X 1/4 FEM COMP | 5 |
| PP480822W | 1/4 X 1/4 NPTF FIXED ELBOW | 5 |
| PP481223W | 3/8 X 3/8 NPTF FIXED ELBOW | 5 |
| PPSV040808WP | 1/4 X 1/4 VALVE | 3 |
| ASVPP1LF | 3/8 X 3/8 - 1/4 ASV | 2 |
| ASVPP5LF | 1/2 X 3/8 - 1/4 ASV | 1 |
| TSNIP-US | TUBE CUTTER | 1 |

CONTRACTOR PAK



PART NO.

SIZE

PEI-CONPAK 9" X 11" X 10"D

CONTRACTOR PAK INCLUDES:

| PART NO. | DESCRIPTION | BOX QTY |
|----------|-------------------|---------|
| PEI0428 | 1/2" CTS COUPLER | 5 |
| PEI0428 | 3/4" CTS COUPLER | 5 |
| PEI0320 | 1/2" CTS ELBOW | 5 |
| PEI0328 | 3/4" CTS ELBOW | 5 |
| PSEI4620 | 1/2" CTS END STOP | 10 |
| PSEI4628 | 3/4" CTS END STOP | 5 |

FLEXI HOSE



PART NO

TUBE
OD

THREAD

BAG
QTY

| | | |
|--------------|-----------------------------|---|
| PSFC28N3618E | 3/4" CTS x 3/4" NPSM - 18"L | 1 |
| PSFC20N3618E | 1/2" CTS x 3/4" NPSM - 18"L | 1 |
| PSFC28C2818E | 3/4" CTS x 3/4" CTS - 18"L | 1 |

Flexi Hose Working Pressures & Temperatures:

TEMPERATURE 160°F MAX. - 40° F MIN.

PRESSURE 125 PSI MAX. - 20 PSI MIN.

Speedfit® Technical Checklist

TECHNICAL CHECKLIST FOR INCH SIZE QUICK CONNECT FITTINGS LISTED ON PAGES 31-46.

Working Pressure and Temperature Range for PP Fittings.

| | |
|-------|----------------------|
| Water | Max. 150 psi at 70°F |
| | Max. 60 psi at 140°F |
| | Min. 33°F/1°C |

Tube Types

Plastic Tube – Polyethylene, nylon and polyurethane conforming to the tolerances shown below. For soft tubing or thin wall tube we recommend the use of tube inserts.

Braided Tube – Use of Tube to Hose Stems listed on page 35 is essential when using braided tube or hose. The use of clamps to retain braided tube on barbs is recommended.

Metal Tube (soft) – Brass, copper or mild steel conforming to the tolerances below.

Metal Tube (hard) – We do not recommend **Super Speedfit®** fittings for hard metal or chrome plated tubes. For stainless steel and other polished metal tubes we recommend the use of Superseal® fittings. These are shown on our website. It is essential that outside diameters be free from score marks and that the tube be deburred before inserting the fitting.

Tube Tolerances

PP fittings are offered for tubes with outside diameters to the following tolerances.

| | | |
|--------------------|-----------------|-----------------|
| Size (inches) | 5/32 - 3/16 | 1/4 - 1/2 |
| Tolerance (inches) | +0.001 / -0.003 | +0.001 / -0.004 |
| Size (mm) | 4mm - 5mm | 6mm - 22mm |
| Tolerance (mm) | +0.05 / -0.07 | +0.05 / -0.10 |

Installation and System Testing

Fittings and tube should be kept clean and undamaged before use.

All tube and fittings installations must be pressure tested after installation to ensure system integrity before handing over to the final user. Refer to "How to make a connection" on our website at www.johnguest.com.

Chemicals

For use with chemicals or other potentially aggressive liquids, please contact our Technical Support Department. **Super Speedfit®** fittings are not recommended for use with explosive gases, petroleum spirits, and other fuels or for central heating systems.

Collet Covers

Refer to our website for range of collet covers.

Food Quality

All the fittings in this catalog are produced in Food and Drug Administration (FDA) approved materials and are therefore recommended for food quality applications. The wetted surfaces of John Guest PP, PPSV, ASV Valves and PE Tubing are in compliance with FDA requirements for direct contact with food as detailed in 21CFR part 177.2470 for the body and 177.2600 for the O-ring. NSF International Standard 51 and 61.



Maximum Torque Values for Plastic Threads.

Do not overtighten plastic threaded fittings as this could cause undue stress and eventual failure. Maximum recommended torque figures are shown below.

| | Threads | | |
|----------------|-------------|-------------|---------|
| | 1/8" - 1/4" | 3/8" - 1/2" | 3/4" |
| Maximum Torque | 1.0ft lbs | 2ft lbs | 3ft lbs |
| | 1.5Nm | 3.0Nm | 4.0Nm |

It is recommended that all installations are checked prior to use to determine that a seal has been made.

The maximum torque figures quoted for use with **Speedfit®** fittings are dependent on the mating thread conforming to the relevant U.S. thread standard.

Maintenance and Replacement Intervals

John Guest products generally require little maintenance but as a minimum we recommend routine visual inspection.

Frequency of visual inspection will depend on severity of application and risk of failure. If after visual inspection John Guest products appear damaged, cracked, charred, discolored, heat distorted or corroded, they should be replaced. Any product that is or appears to be leaking should be replaced.

Product life is affected by the severity of the application, the hostility of the working environment and contact with aggressive chemicals or liquids. It is therefore important that specific replacement intervals be considered by specifier/users/customers based on previous service life or when failure could result in unacceptable downtime, damage or injury risk.

Cleaners and Sanitizing

The external surfaces of John Guest products must not come into contact with oxidizing or acidic cleaners and sanitizing agents, for example (but not limited to) those below pH 4, high in sodium hypochlorite level (bleach) or containing hydrogen peroxide. Our plastic material suppliers recommend ECOLAB Oasis 133 as a suitable cleaner for the external surfaces of products manufactured by John Guest. Several different methods exist for sanitizing the internal surfaces of fluid systems, including sodium hypochlorite, hydrogen peroxide, chlorine dioxide or ozone. It is entirely the responsibility of the end user to determine if the chosen method is suitable for use with John Guest products over the planned working life of the system. However, to avoid unnecessary early failure, John Guest requires that the disinfection solution must be immediately flushed out at all draw off points with fresh, wholesome water at the end of the disinfection period. **The solution must not be left in the system.** Disinfection solutions must only come into contact with the internal (fluid carrying) surfaces of the system. If any other surfaces of a fitting come into contact with disinfection solution **the whole fitting must be replaced immediately.** Polypropylene fittings offer greater resistance to aggressive chemicals but does not have the same mechanical properties as other materials. John Guest polypropylene fittings are generally designated by the part number prefix PP or PPM.

Responsibility of Use

While we give a warranty against defects in manufacture or materials, it is the responsibility of the user/installer to ensure that fittings and related products are suitable for their application. The installation must be carried out correctly in accordance with our recommendations, complying with recognized codes of practice and relevant national standards, and be properly maintained. Please refer to our terms and conditions of sale.

Side Load

Fittings should not be subject to excessive side loads and they should not be used as support brackets. Tubing and fittings should be adequately supported to prevent excessive side loading.

Product Selection and Installation

John Guest fittings and related products are specifically designed and manufactured by John Guest to the technical specifications set out in the John Guest Product Catalog. All John Guest fittings and related products should be selected, installed, used and maintained in accordance with these Technical specifications. It is the customer's/user's responsibility to ensure that John Guest fittings and related products are suitable for their intended applications, and are properly installed and maintained and are used in accordance with the Technical specifications. It is also the customer's/user's responsibility to provide its customers with any relevant technical information about John Guest products it supplies them.

The company has a policy of continuous research and development and reserves the right to amend without notice the specification and design of all products illustrated in this catalog. John Guest reserves the right to change the color and shape of products. Photographs are for illustration purposes only.

Subject to our Terms and Conditions of Sale.

John Guest is not responsible for misprints or typographical errors.



John Guest USA Inc.

180 Passaic Avenue, Fairfield, NJ 07004

Tel: 973-808-5600 Toll Free: 1-800-945-4872

Fax: 1-973-808-5036

Web: www.jgspeedfit.com www.johnguest.com

Email: info@johnguest.com

Email Orders: jgusa.orders@johnguest.com

The company has a policy of continuous research and development and reserves the right to amend without notice the specification and design of all products illustrated in this catalog. The photographs in this catalog are for illustration purposes only.

JG® John Guest® and **Speedfit**® are registered trademarks of John Guest International Limited. © Copyright 2015



AVAILABLE FROM:

