

The Queen of Cups

T. Antoni Grabiec

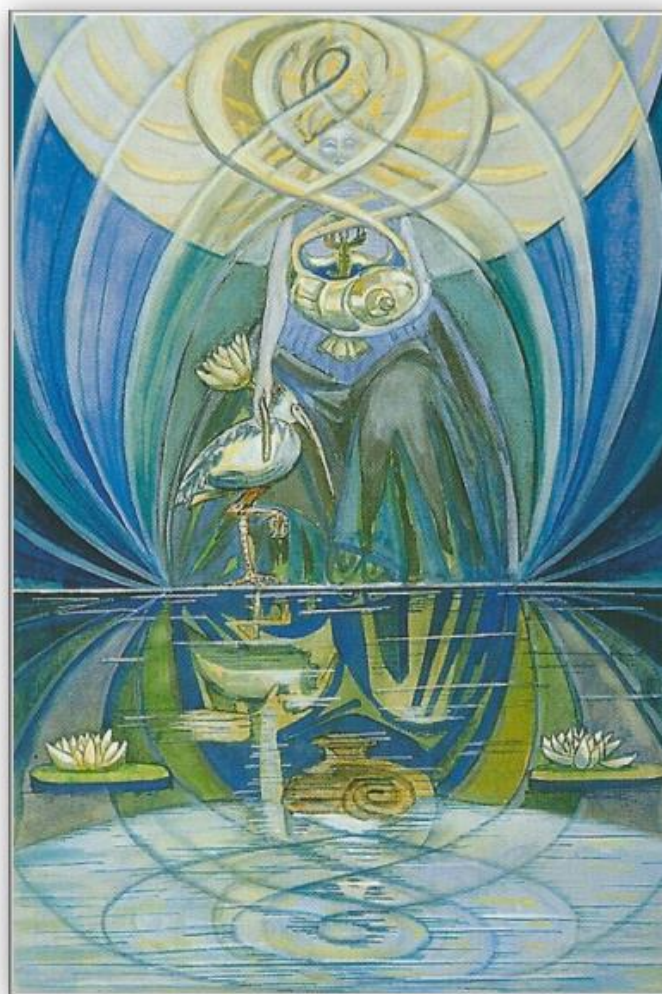


"The Queen of Cups is the Worldly principle and Universal Archetype of Mastery of Emotional Integrity. The Beholder of Life is starting on a new journey, a new adventure, with fresh insight and a deep connection into the centres of Truth and Self. The Queen symbolizes emotional congruity concerning motherhood issues and female authority figures in one's Life. The Queen is a dancer of Emotion, sparkling and teeming with boundless energy for Love, Compassion and Wisdom."

THE UNIVERSAL PRINCIPLE AND WORLDLY ARCHETYPE OF MASTERY OF YOUR PERSONAL EMOTIONAL INTEGRITY

“Guided by instincts, she is attuned to that otherworld and finds joy in that communion of kindred spirits. For someone else who did possess a comprehension of her synchronicity, a misstep from her position would mean a plunge into unfathomable depths, but no so for the Queen of Cups. She dances on, embraced by the endless azure ocean and heavens, and where the sea meets the sky, there is no seam.”

- Lisa Hunt (Animals Divine Tarot)



The **Queen of Cups** is the Universal Archetype and Worldly principle of Mastery of Emotional Integrity. The **Magnificent Queen** has her hand on the *stork* which represents her determination to *express herself naturally and accurately*, as she **gives birth** to *fantastic new forms, new talents, new identities and new life*, which are all symbolized by the **purity of the stork**.

The **Queen of Cups** is the *true expression* of emotional authenticity and *congruity* concerning **motherhood issues** and issues surrounding *maternal* and *female authority figures* in one's life, including one's own mother. The **Queen of Cups** is one of the *four motherhood symbols* in the Tarot deck (The Empress, The Aeon and the Princess of Disks).



In her other hand, the **vibrant Queen** holds the *crayfish shell*, which serves as a reminder that she chooses integrity over illusion/deception (*the fish standing on its tail making the sign of Neptune's fork*). **Neptune** symbolizes *inspiration* or delusion when swimming in the vast Nature of one's own **great emotional sea**.



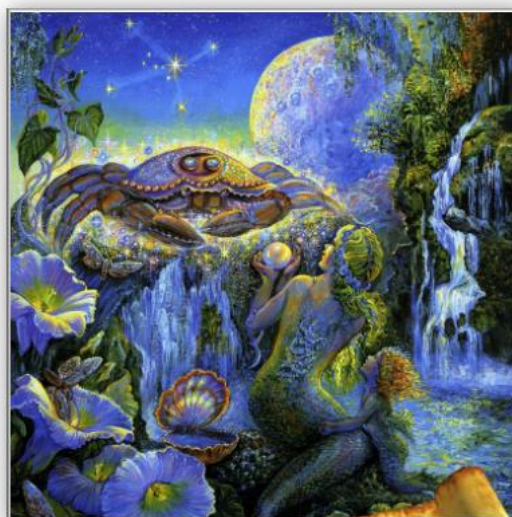
"In Greek mythology Neptune is the God of the Seas, whose trident represents the three vital impulses of the spirit: conservation, reproduction and evolution (Cirlot, 1962). The Queen of Cups is committed to expressing Neptune's inspiration rather than Neptune's illusionary or delusionary qualities. The double reflection of the water is representative of her constant choice to reflect her feelings accurately 'as above, so below'. Whatever she is feeling inside, she is determined to reflect accurately on the outside as a way of preventing any dichotomy between what is felt internally and what is being expressed externally."

- Angeles Arrien (The Tarot Handbook)

The **fair Queen** also represents a *beautiful, fair and dreamy woman* who is *good, honest and devoted*, who does great service to the Querent. She is bursting full of *loving intelligence*, has the **tremendous gift of Vision, success, happiness, pleasure, wisdom and virtue**.



The **Fabulous Queen** symbolizes the constant practise of *owning one's own feelings* and expressing them without blame or judgement. She **does not abandon, deny or repress her feelings**. She *communicates* her feelings accurately and *openly*. She does not use her feelings to attack others, nor does she *apologize for her feelings to anyone*. She **stands strong** in her unique Beauty!



For men, the **delightful Queen** symbolizes the **anima** figure, who is totally committed to *expressing feelings honestly and responsibly*. She symbolizes the responsibility of communicating your feelings accurately during the *water sign months* of **Pisces** (February 21st to March 21st), **Cancer** (June 21st to July 21st) and **Scorpio** (October 21st to November 21st) and to water sign people in your life.



The **Queen of Cups** requires that you reflect yourself honestly as you *make changes* and *give birth to new identities*, **new forms**, *new talents* and *new lifestyles*. It is important that you express yourself authentically to *water sign people*, and in the *water sign months* as you make these changes and give birth to new parts of your life. It is time to **express your feelings** *honestly* and openly.



In the **sparkling Shadowscaapes Companion Tarot** by *Stephanie Pui-Mun Law* and *Barbara Moore*, the dancing Queen is shown as *poetry in pure motion*, imagination incarnate. She *dances* on the swells of the *ever-changing*, *ever-shifting* seas, in unison with the **dance of Life** that engages all the world and its *fantastic creatures*.

“Though her steps seem random and impulsive, she relies upon a deep-seated knowledge. She draws her strength from the vast abyss of the ocean. The ancients of the deep, the sea turtles, the wise ones of the ocean: they come swimming up to join her in a joyous celebration. The world that they jointly move in is like a dream. Everything is fluid, one element melding into the next. It is the shifting landscape of the subconscious, overlapping with the material being of reality. This is the essence of creation and artistic expression.”

- Stephanie Pui-Mun Law & Barbara Moore (Shadowsapes Companion)

The **brave Queen** heeds her intuitions and *follows her heart*. She listens closely to the *whispers of the stars*, for she treasures their wisdom. The stars have *witnessed the world* from when the seas were young.



Within the **twinkling Animals Divine Companion** by *Lisa Hunt*, the **Queen of Cups** is akin to the *Incan goddess of the Sea, Mama Cocha*. Her qualities are full of *expression*, affection, *emotion* and in league with the *inner psychic vibrations* of your personal Life energy, teaming with *comfort* and *compassion*.

“Mama Cocha is the Incan goddess of the ocean. Revered by fishermen, she provides bountiful food from her watery realm. She is one of the oldest divinities of ancient Peruvian cultures. She is the giver of water and rain, providing nourishment and good health to all those that worship her. Mama Cocha is the sister and wife of Viracochas. Her name translates as “mother of the sea”. Her influenced rein high in coastal areas, where her provisions are vital to the survival of fishing communities.”

- Animals Divine Companion (Lisa Hunt)

The *movement of the water* represents active psychic energy. The *ebbing tides* upon the sandy shore contract sharply with the **crashing waves** and mirror the *expressive side* of our eternal inner being.



The *elegant swimming dolphin* is at one with the **goddess**, merging with her *sparkling form* and communicating through echolocation. **Dolphins** symbolize a *higher intelligence* and *great intuitive powers*. The **fish** are *symbols of renewal* and the **crab** a symbol of regeneration. The crab is an expert at *locating hidden water caches*. The **spirals** symbolize the *omnipresent flow of energy*.

The **three seashells** on the belt of Mama Cocha represent the *natural beauty of the power of the ocean*. The **conch shell** is *multitudinous* with its fantastic never-ending spirals. Mama Cocha wears a **headband** and **armband**, symbols of eternity and the *oneness with all the creatures*, fauna and *flora* of the **ocean**. She wears the mark of the triskelion, signifying the continuous nature of *birth*, death and **rebirth**.

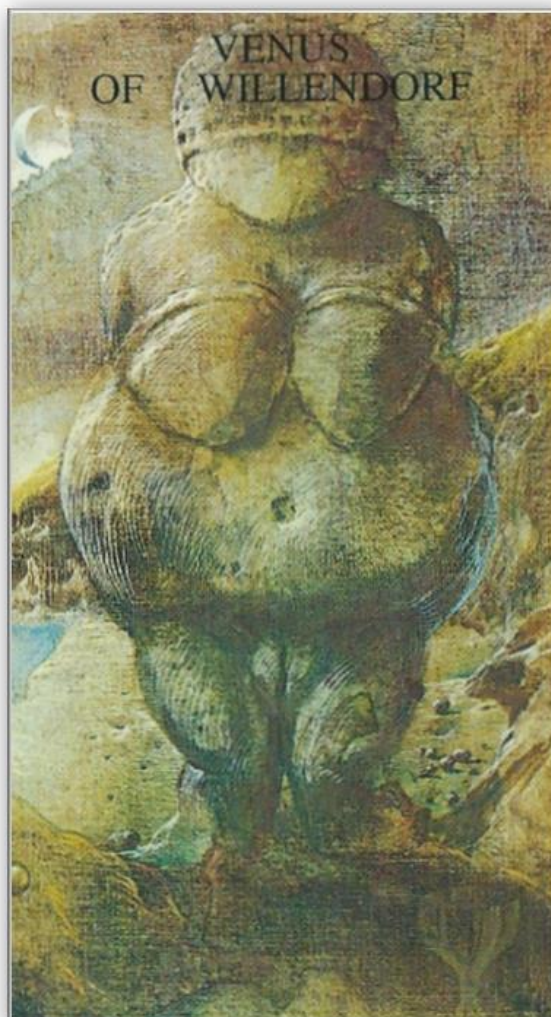
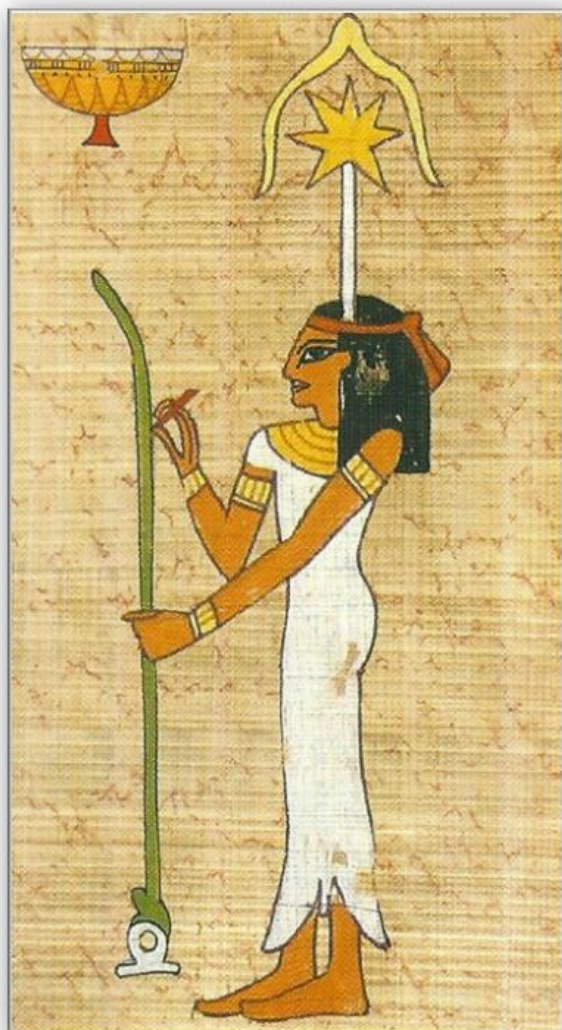
Mama Cocha's *divine* and eternal flow shows that we can be more connected with our *own psychic life*. The **waters of the unconscious** are *teeming with life* and insights into past, present and *future*. By learning how to *connect with our inner life*, we learn to become more attuned with *our own inner being* and vital energy. We become *more empathic* to everything around us. This is a fabulous opportunity to *nurture our intuitive flows* and become *more sensitive* and aware of the differing environments both *within* and without.



Written in the **Magnificent Fantastical Creatures Tarot** by *Lisa Hunt* and *D.J. Conway* the resplendent Queen is represented by the **mermaid**, who is strong and resilient with **psychic power** and *feelings*.

The *beautiful mermaid* navigates the great sea of emotions with **confidence**, *grace* and power. Her *spiritual light* shines over her like a giant halo. Encircling her are many **little fish**, which are *ancient symbols of divinatory messages*. The **coral** and *seaweed* represent emotional openness, the *playful inner child*, and the ability to attract true love.

Bubbles resembling *stars in the night sky* circle around the mermaid like moons around a planet. **Stars** signify *other lifetimes, spiritual progress of souls*, and the ultimate connection we all have with the *goddess and god*.



In the **ancient Kleopatra Tarot**, the wise Queen is symbolized by **Seshat**, the *ancient goddess of wisdom, Knowledge* and writing. She glows with the *feminine love of a sincere woman, a mother, wife, lover and sincere friend*. She steers your endeavours into positive fields of great clarity and harvest. The **radiant Queen** teaches how to be *sensitive to your own Soul*, allowing *great wisdom, faithfulness* and fertility to come into your Heart.

In the **heroic Haindl Tarot**, the legs of the ancient stone form go deep into the ground. The Queen of Cups is shown as '**Venus**' and is of the Earth. The *Moon* and the *Ocean* connect her with the goddess energy. The landscape is *green and fertile*. This symbolizes traits which are *earthy, plain, honest*, with a deep connection to **primal ancient forces**.

Within the honest and **Fabulous Learning the Tarot** by *Joan Bunning*, it is shown that the pensive Queen is a combination of the *positive water energy* of the Cups suit with the *inward elegant focus* of the **vibrant Queen** herself. The Queen has a *sweet, loving and sensitive nature* to everyone and never reacts with *anger or impatience*.

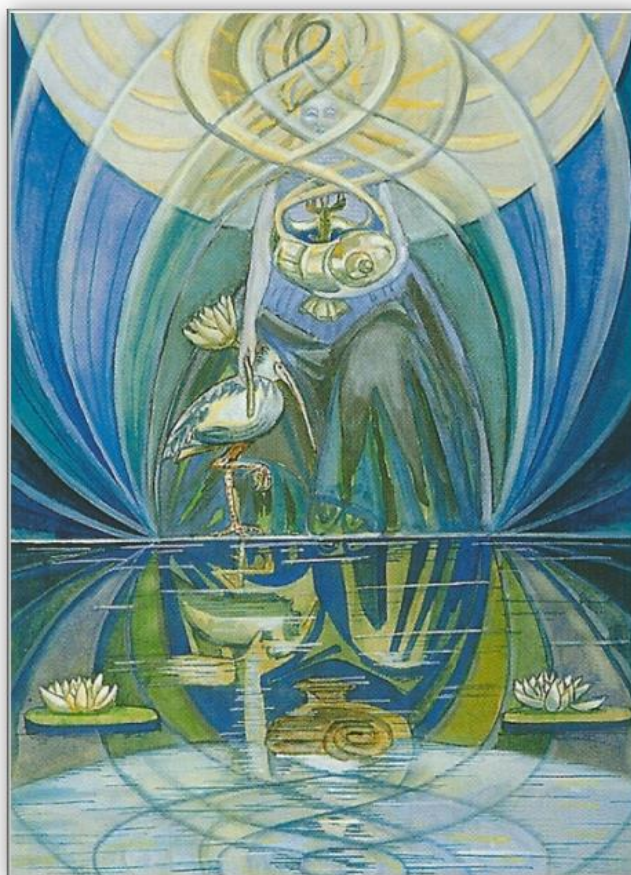


The **heartfelt Queen** feels deeply and has *reverence* for all aspects of Creation. Her *love embraces everyone* and everything. The *gracious Queen of Cups* asks us to think and *feel* as she does.

*Are you aware of the emotional climate?
Do you trust your heart completely?
Are you feeling the Joy of Love?
Have you received an intuitive message?
Have you been moved by another's pain?*

The **faithful Queen** represents an atmosphere of *gentle love, acceptance* and *respect for feelings*. She tells you that her *special energy* has great meaning for you at this time. Let yourself be inspired by the **Queen** in whatever form she appears to in your Life.

In the *graceful* and **elegant Book of Thoth** by *Aleister Crowley*, the Queen of Cups represents the *watery part of Water*, its power of reception and reflection. In the *divine Zodiac* it rules from the 21st degree of **Gemini** to the 20th degree of **Cancer**. Her image is of *extreme purity and beauty*, with *infinite subtlety*; to see the Truth of her is hardly possible, for she *reflects the nature of the observer in great perfection*.



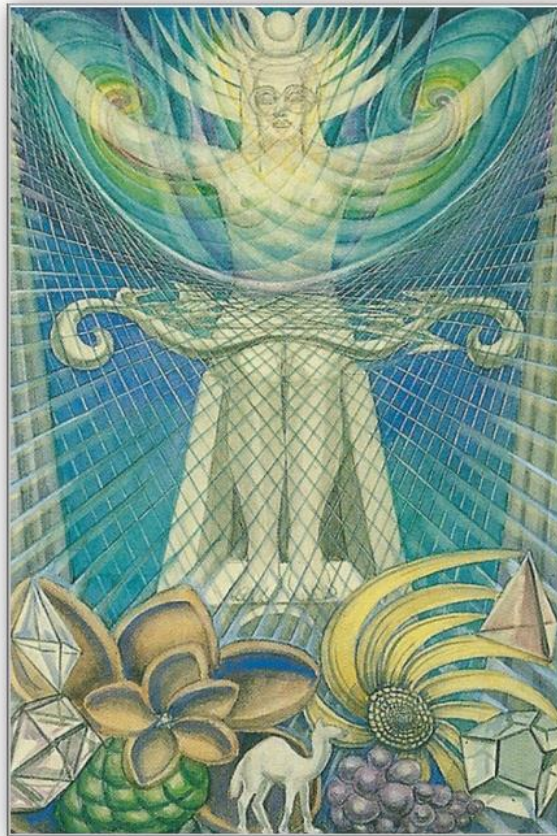
“She is represented as enthroned upon still water. In her hand she bears a shell-like cup, from which issues a crayfish, and she bears also the Lotus of Isis, of the Great Mother. She is robed in, and veiled by, endless curves of light, and the sea upon which she is enthroned conveys the almost unbroken images of the image which she represents.”

- Aleister Crowley (The Book of Thoth)

Principles associated with **Queen of Cups** are *dreaminess*, illusion and *tranquillity*. She is a perfect agent and *patient*, able to **receive** and **transmit** everything without herself being affected thereby. If ill-dignified, all these qualities are **degraded**; everything passing through her is *refracted* and distorted. Her characteristics depend mostly upon the *influences* that affect her.



In the **Yi King**, the Watery part of Water is represented by the 58th hexagram, **Tui**. The commentary is as *colourless as the card*; it consists of *mild exhortations on the subject of pleasure*. It can be said that people of this type have no character at all of their own, unless it can be called a characteristic to be at the *disposition of every impact* or impression. It is hinted that the *chief pleasure* of people of this type is to **lead** and *attract others*.



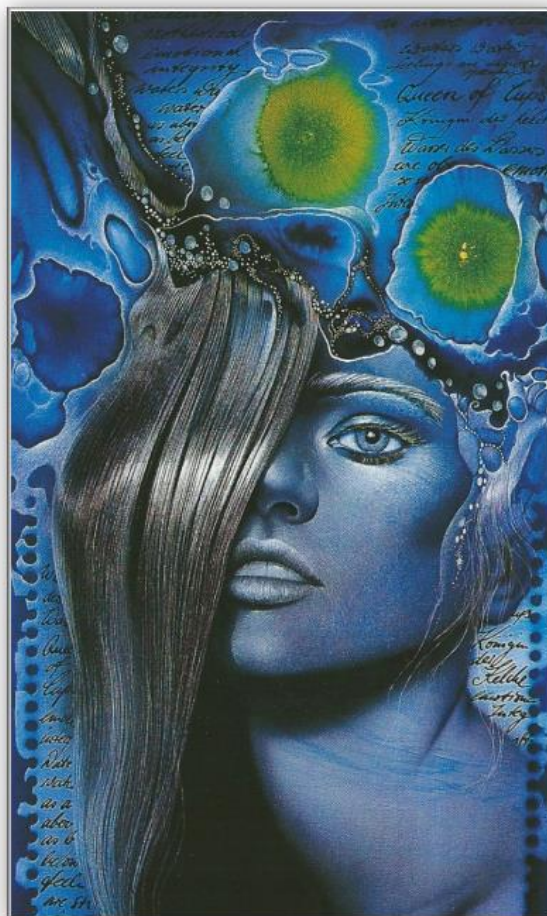
The *dignified* Lon Milo DuQuette in **Understanding Aleister Crowley's Thoth Tarot** states that the luminous Queen of Cups bears a striking resemblance to Atu II, the **High Priestess**. The lustrous Queen rules from June 11th to July 11th and she rules the **Ten of Swords**, the **Two of Cups** and the **Three of Cups**.

The **glowing Queen** is known as 'The Queen of the Thrones of Water' and 'Queen of the Nymphs or Undines'. She is **Binah** in **Briah** (*Water of Water*) symbolizing emotion directing emotion and is akin to women aged *thirty six* and older.

"Water of Water is tantamount to saying reflection of reflection, or mirror to mirror. The Queen of Cups is popular and makes friends easily because, when others look at her, they see only themselves. If ill dignified, she can be dangerous and cruel, distorting the reflections she casts back on her unsuspecting victims, who then see only monsters in the mirror."

- Lon Milo DuQuette (Understanding Aleister Crowley's Thoth Tarot)

The **Magnificent Queen** has appeared in your Life to give you a **great gift**. This is the Magnificent Nature of Emotional personal Integrity, allowing you a *deep connection into your own Soul*, granting you the *tranquillity* and power to listen to your innermost feelings and hence be *sensitive* to the feelings of others. It is a time of honesty within yourself and an opportunity to *give birth to new forms*, new energies in your **own Life**. See the world and yourself as a *divine* and **sacred place** and space.



Skills and Traits - facets of the Queen of Cups

being Loving

turning away wrath with caring
unconditionally accepting
sensitive to feelings of others
dispelling anger and hate
having infinite patience
oneness with God and the Universe



being Tender-Hearted

easily moved by another's pain
having sensitivity and compassion
kind and gentle with all creatures
helping someone in need
feeling what others are feeling
having reverence for all Life



listening to Intuition

turned to emotional undercurrents
sensing the climate of the situation
being guided by the heart
trusting inner truth
understanding without need to ask
finding Joy in communion



Psychic Intuition

open to the unconscious
well-developed sixth sense
telepathic bond with another
has finely tuned sensibility
natural medium
appreciating deeper Life

World and Occupation

feeling Oneself Loved

humanity, idealism, true love, caring
warmth , domesticity, sensitivity
passion, beauty, good taste, affection
friendliness , artistry, lightness, home
childbearing, motherliness, laughter
romance, support, pregnancy, hearth
generosity, marriage, charm

mediums, doctors, counsellors, nurses
care-givers, clairvoyants, philanthropists
healers, visionaries, psychic healers



Reversed

Going against the Divine

suspicion , loss of optimism, broken hopes
relationship terminated or ruined, abandonment
fears of motherhood and domestic responsibilities
inability to physically bear children, indifference
anti-social feelings, recrimination, misdiagnosis
indecency, pessimism, betrayal, rejection, loss
being denied a strong ally or friendship, lost care

warning against marriage and having children
shallowness, withdrawal, feeling unsupported
ostracization, woman not to be trusted, pain
poverty, dishonour, abortion, parsimony
poor health, miscarriage, death, coldness, vice
someone out of touch with physical realities
perversion, depravity, fatalism, ruin

*(The reversal asks to strengthen the positive and release the negative.
Any path will always lead to both being fulfilled)*

Negative Path

Treading Path of Fear

heedlessness, laziness, impressionability
hypochondria , superficiality, manipulation
hypersensitivity , apathy, smothering attention
extreme introversion, paranoia, irrationality
domination , gullibility, vacillation, neurasthenia
hesitation, weakness, intellectual retardation
emotional blackmail, timidity, vampirism, evil
neurosis, pettiness, vacuity, control, fear

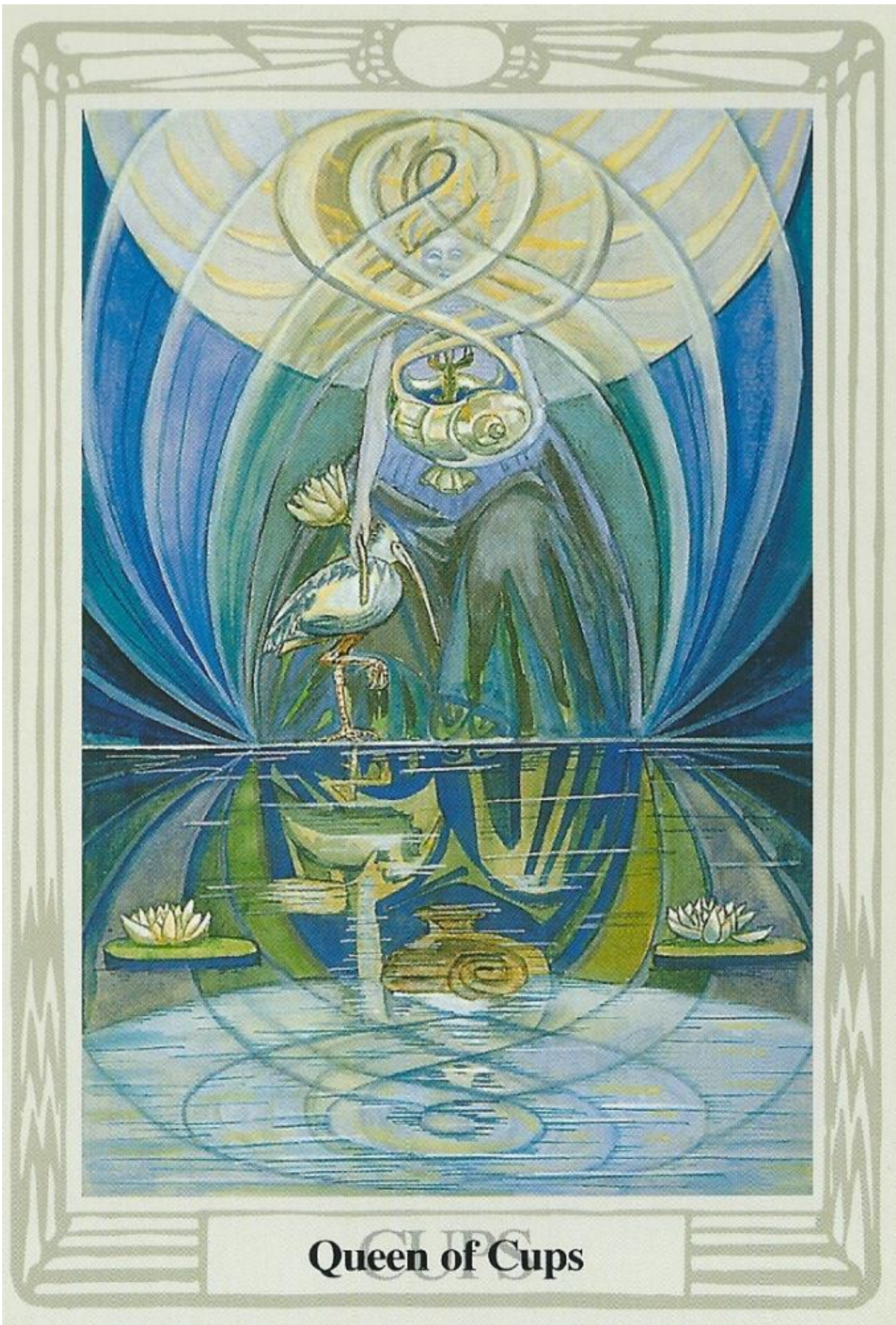


Research sources

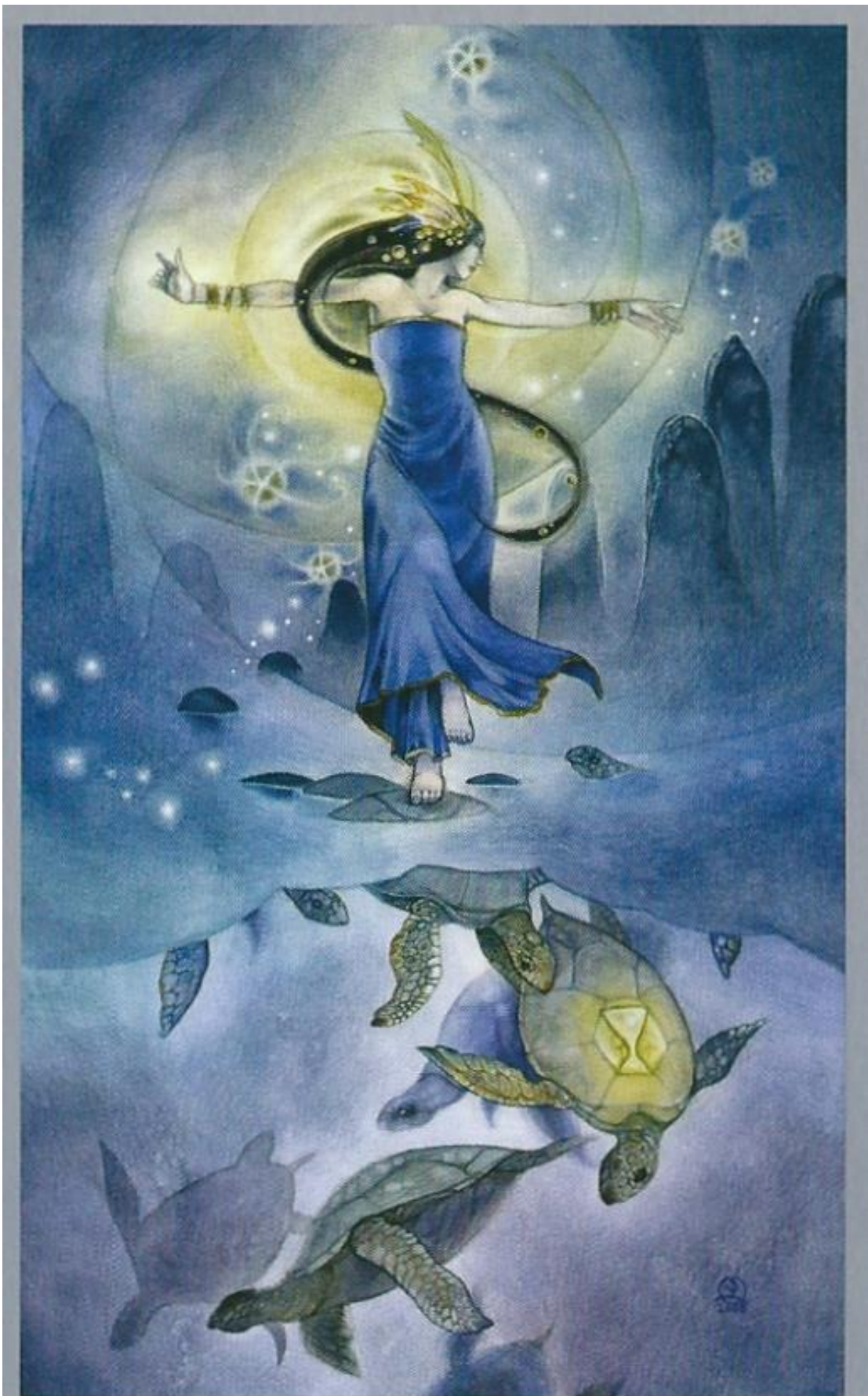
Taroscopes by *Michael Tsarion*
taroscopes.com

Röhrig Tarot by *Carl-W. Röhrig*
Arcus Arcanum Tarot by *Hager Gunter*
The Tarot Handbook by *Angeles Arrien*
The Book of Thoth by *Aleister Crowley*
Animals Divine Companion by *Lisa Hunt*
Fantastical Creatures by *Lisa Hunt & D.J. Conway*
Thoth Tarot by *Aleister Crowley & Lady Frieda Harris*
Radiant Rider-Waite Tarot by *Pamela Colman Smith*
Shadowscares Companion by *Stephanie Pui-Mun Law & Barbara Moore*
Understanding Aleister Crowley's Thoth Tarot by *Lon Milo DuQuette*
Robin Wood Tarot by *Robin Wood & Michael Short*
Kleopatra Tarot by *Etta Stoico & Silvana Alasia*
Connolly Tarot by *Eileen & Peter Paul Connolly*
Learning the Tarot by *Joan Bunning*
Haindl Tarot by *Hermann Haindl*

pyreaus.com



Queen of Cups



Queen of Cups

↔ MAMA COCHA ↔

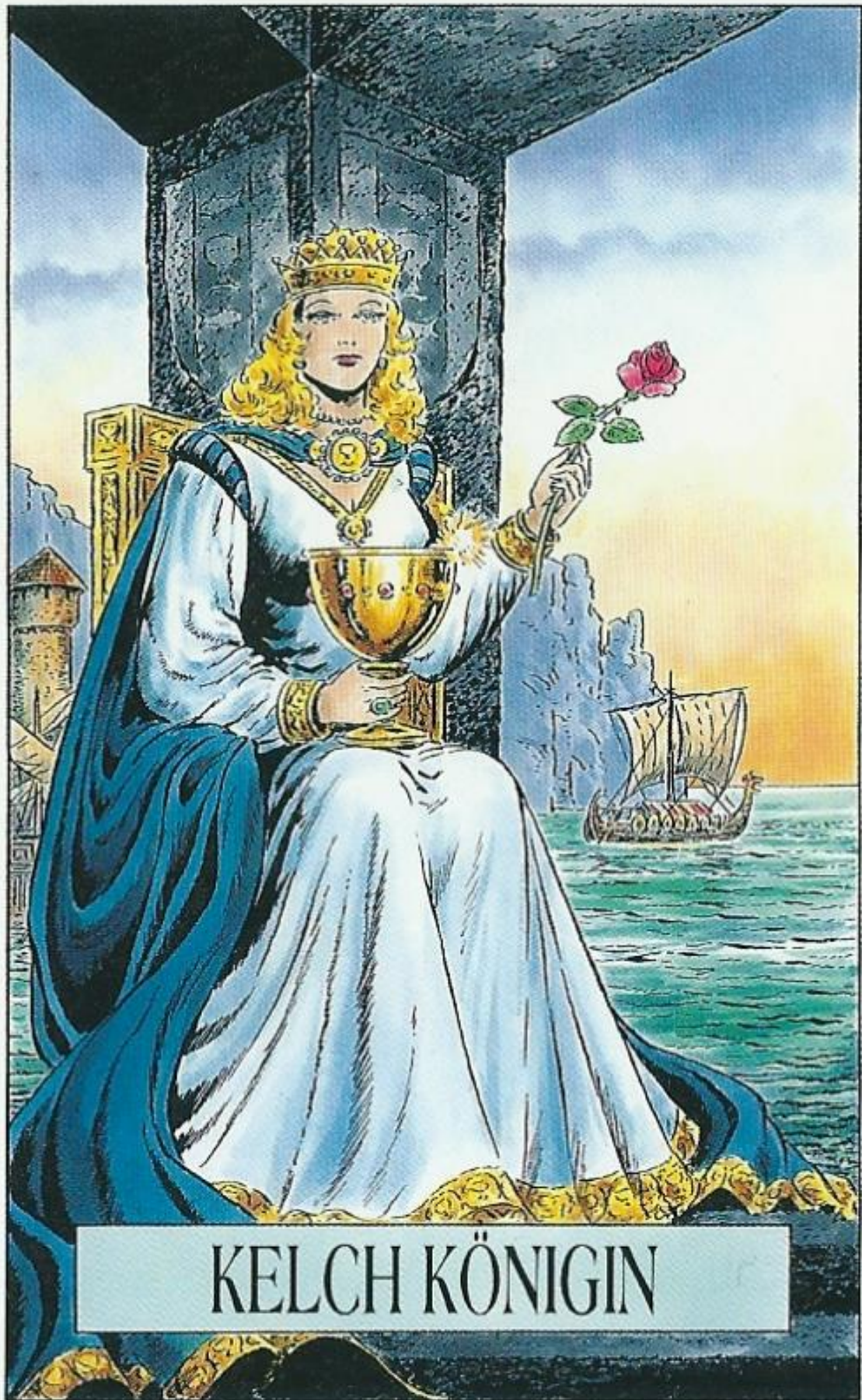


QUEEN ♯ CUPS

QUEEN



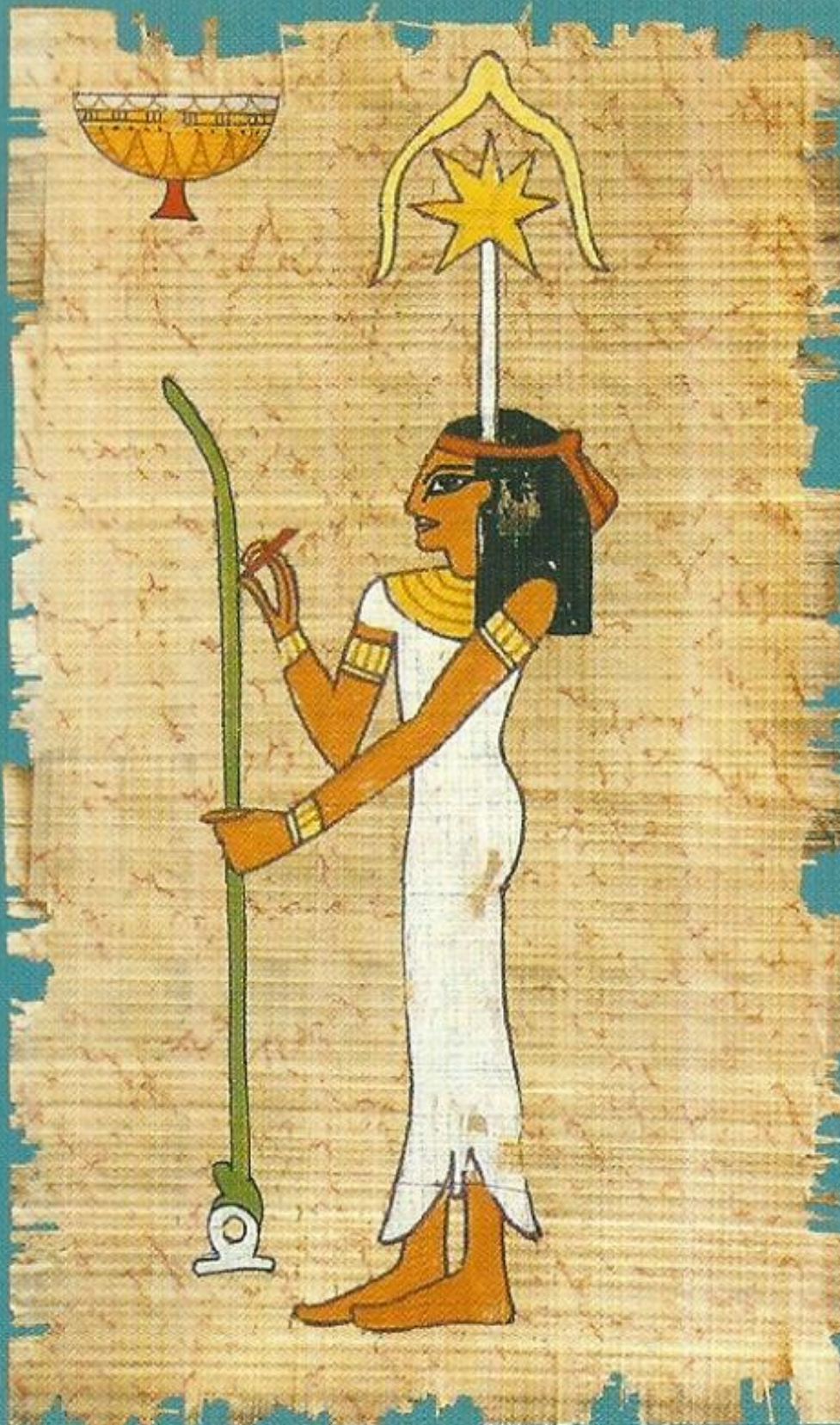
CUPS



KELCH KÖNIGIN

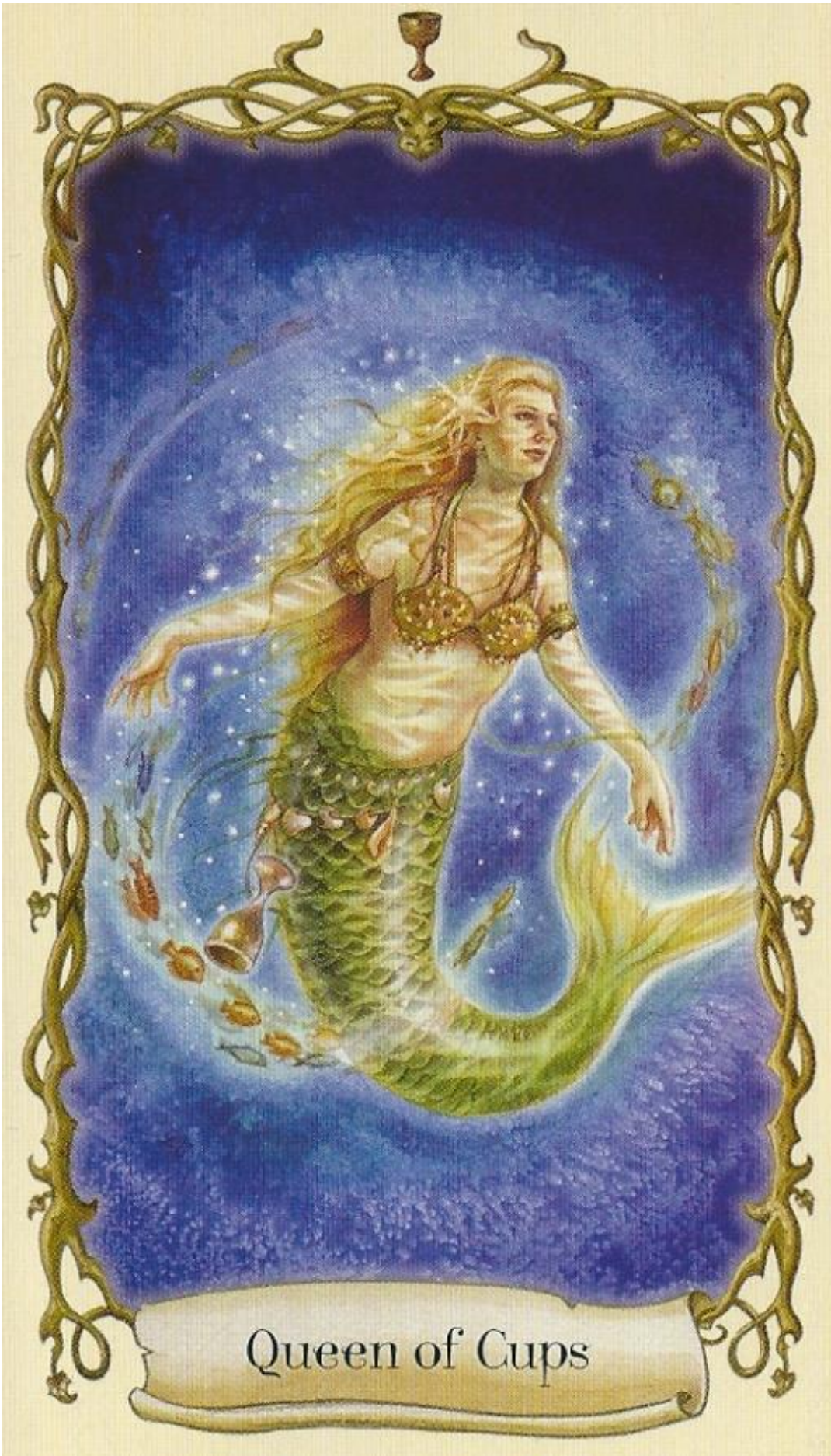
QUEEN OF CHALICES
REINA DE COPAS

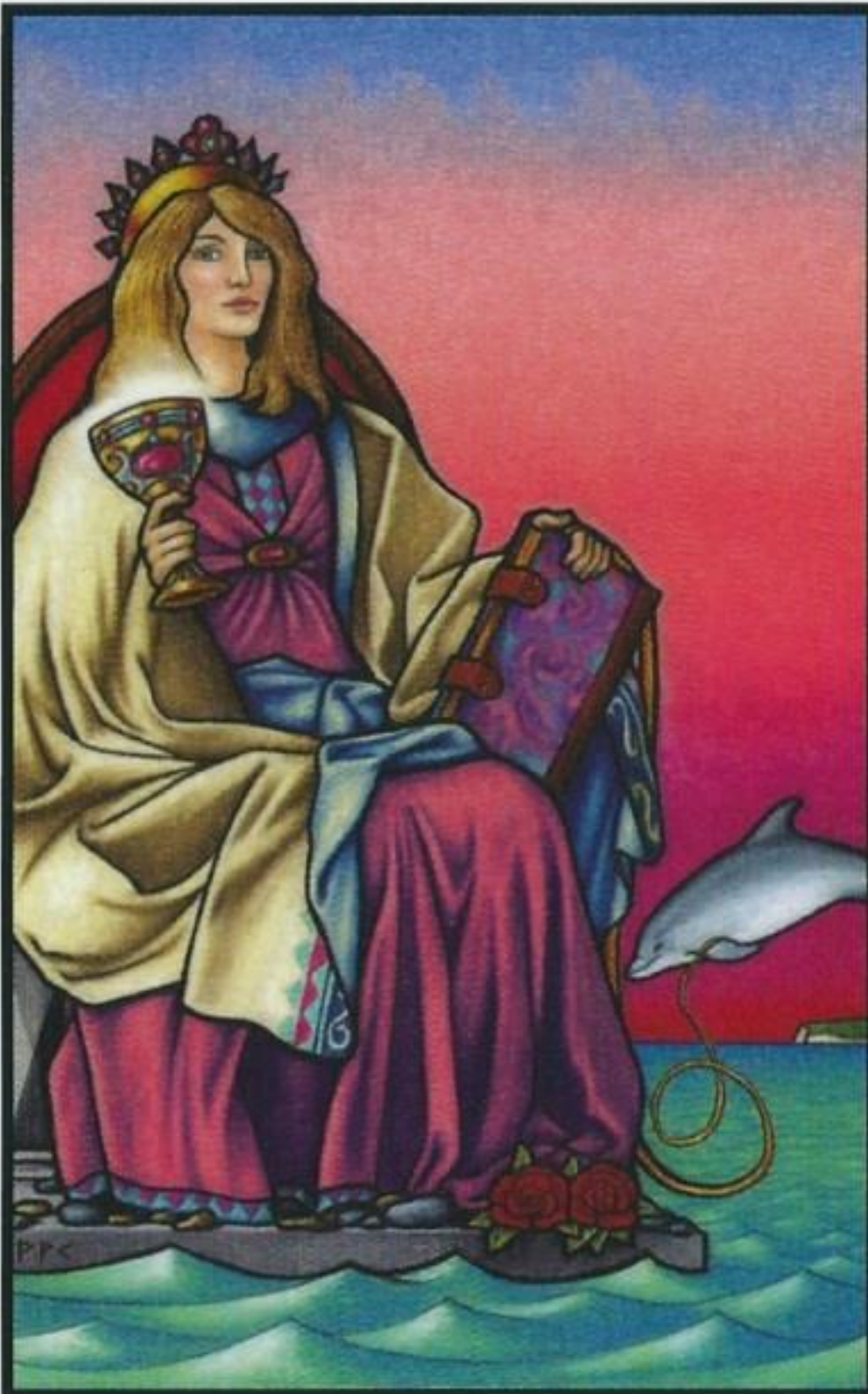
REGINA DI COPPE
REINE DE COUPES



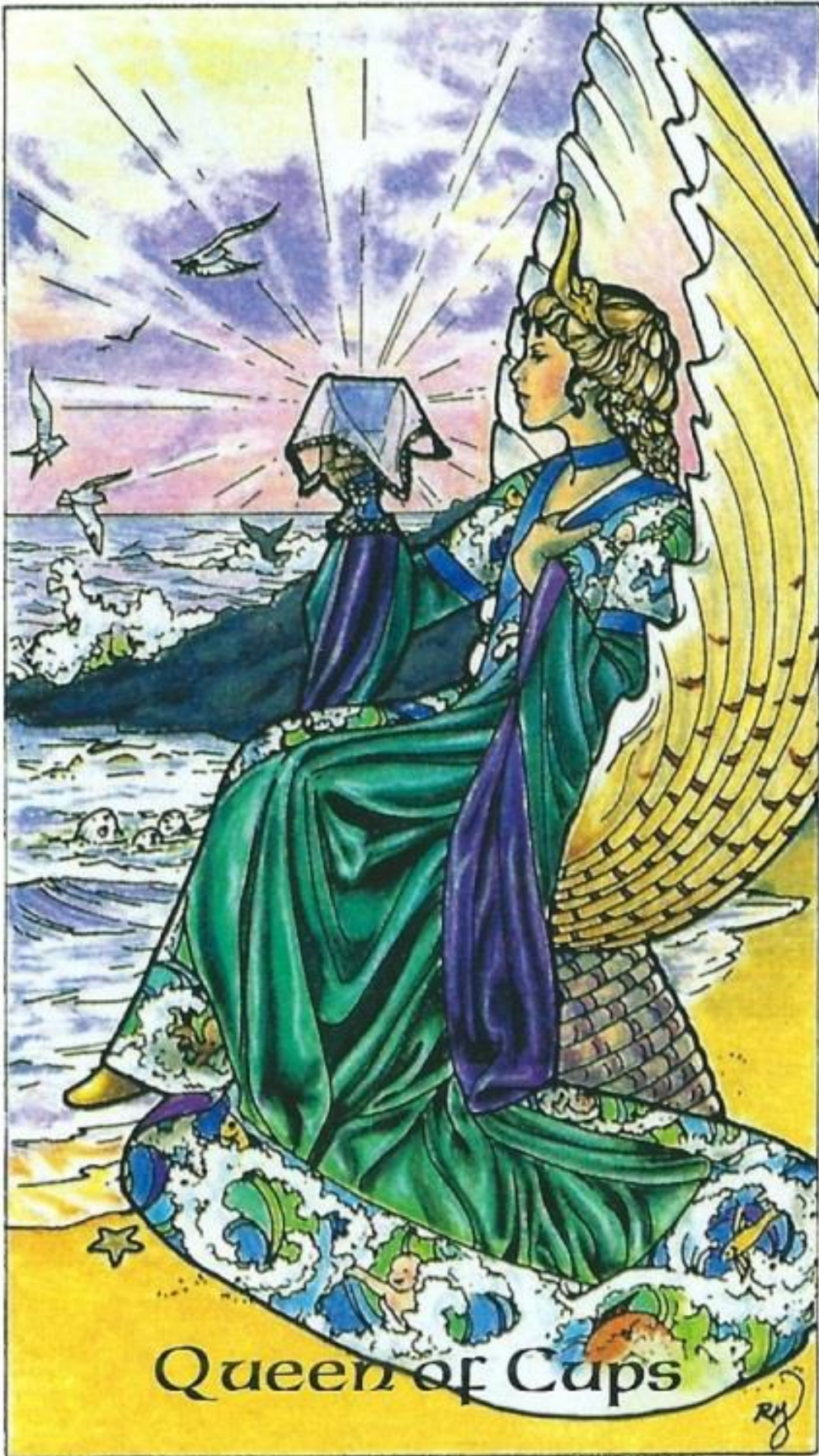
KÖNIGIN DER KELCHE

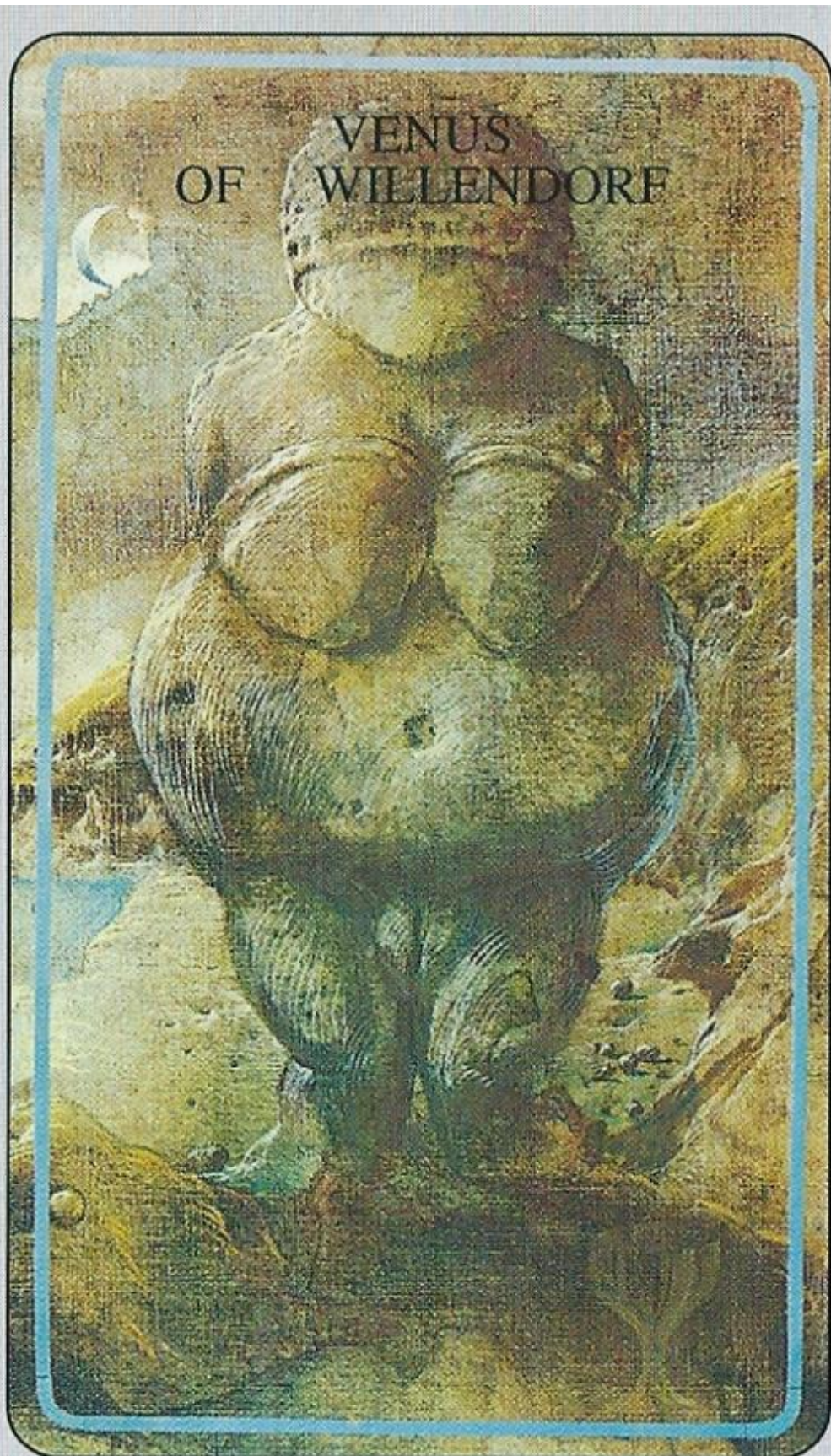
BEKERS KONINGIN





Queen of Cups





Mother of Cups in the North
Queen of Cups