

THE SCHOOL OF

ARTS AND COMMUNICATION

PLU MAJORS AND ACADEMIC PROGRAMS



The School of Arts and Communication (SOAC) is dedicated to building and enhancing our community through the study, practice and understanding of artistic expression. Housing the departments of Art & Design, Communication & Theatre and Music, and presenting more than 250 events each season, SOAC combines the best practices of liberal arts education and exploration with the values and benefits of applied and professional study. Our focus, through creative expression and outreach, is to play a significant and meaningful role regionally, nationally and globally in developing processes for sustainable cultural enhancement.

SCHOLARSHIPS

Artistic Achievement Awards are offered in renewable amounts ranging up to \$12,000 per year. Awards are available in:

- Art & Design
- Music
- Dance
- Theatre: Acting
- Theatre: Technical
- Forensics (Speech & Debate)

You can apply for scholarship awards in multiple areas. The application deadline is Feb. 9, 2015, with auditions held Feb. 20-22. Visit www.plu.edu/soac/scholarships for more information.

www.plu.edu/soac

ABOUT PACIFIC LUTHERAN UNIVERSITY

Based in the suburban Parkland neighborhood of Tacoma, Wash., on a 156-acre woodland campus, Pacific Lutheran University offers approximately 3,500 students a blend of academically rigorous liberal arts and professional programs. Founded in 1890 by Norwegian immigrants, PLU seeks to educate students for lives of thoughtful inquiry, service, leadership and care—for other people, for their communities and for the Earth.

MAJORS

ART & DESIGN

- Bachelor of Arts in Art History
- Bachelor of Arts in Studio Arts
- Bachelor of Fine Arts in Studio Arts
 - Ceramics
 - Graphic Design
 - Painting
 - Photography
 - Printmaking
 - Sculpture

COMMUNICATION & THEATRE

- Bachelor of Arts in Communication
 - Communication Studies
 - Conflict & Global Peacebuilding
 - Journalism
 - Public Relations & Advertising
- Bachelor of Arts in Acting/Directing
- Bachelor of Arts in Design/Technical Theatre
- Bachelor of Fine Arts in Acting/Directing
- Bachelor of Fine Arts in Design/Technical Theatre

MUSIC

- Bachelor of Arts in Music
- Bachelor of Music in Composition
- Bachelor of Music in Performance
 - Instrumental
 - Organ
 - Piano
 - Voice
- Bachelor of Music Education
- Bachelor of Musical Arts

MINORS

- Art History
- Studio Arts
- Publishing & Printing Arts
- Communication
- Theatre
- Dance Performance
- Music—general and specialized

INSIDE

ART & DESIGN	2
COMMUNICATION	4
THEATRE & DANCE	5
MUSIC	6
CO-CURRICULAR OPPORTUNITIES	8
WHERE YOU WILL LEARN AND PERFORM.....	9

ART & DESIGN

Concepts change rapidly. New media emerge daily. Today's artists and designers simply cannot adapt—and thrive—without a wide variety of experiences and creative flexibility. At PLU, Art & Design students are prepared to meet the modern world with technical skills and the capacity for innovation.

Our programs stress individualized development in the use of minds and hands, allowing you to chart your own path through a variety of artistic styles and media.

The Art & Design faculty believes individuality, creativity and freedom of expression are integral to your success. Transitioning into a variety of creative careers, Art & Design graduates benefit from PLU's vast instructional resources—and their own dedication and energy.

“Those pursuing a career in the arts should know that it's a high-risk, high-reward proposition. However, if you've done the soul-searching and you feel called, know that it can be done and go after it with all your might!”

— JEREMY MANGAN, CLASS OF 1998
ARTIST ENTREPRENEUR AND MEMBER OF THE SCHOOL OF ARTS AND COMMUNICATION ADVISORY BOARD



PLU's Elliott Press provides hands-on classes for students in the Publishing and Printing Arts minor. Founded in 1982, it features two platen letterpresses from the early 1900s; a Vandercook proof press from the early 1960s; and more than 300 drawers of type, each offering unique design and printing possibilities.



WHERE ART & DESIGN GRADUATES

WORK

- Hollywood (*Lord of the Rings*, *Men in Black*)
- Experience Music Project Museum (Seattle)
- CareZone
- Nordstrom Corporate
- Starbucks Corporate
- Wunderman
- Clay Art Center (Tacoma)
- Oblation Papers & Press
- Museum of Glass (Tacoma)
- LeMay: America's Car Museum
- Tacoma Art Museum
- Bellevue Arts Museum

GO TO GRADUATE SCHOOL

- The Royal College of Art (London)
- Savannah College of Art & Design
- Pratt Institute
- Academy of Art University
- University of Wisconsin-Madison
- City University of New York

LEARN MORE

WWW.PLU.EDU/ARTD



COMMUNICATION



Communication is a constantly evolving field. We prepare future journalists, conflict practitioners, public-relations and advertising specialists, bloggers, social-media practitioners—and those whose communication-related professions have yet to even emerge.

You'll learn to write for every platform—print, television, radio and digital—so that when you graduate, you'll succeed through mastery of theories and best practices. You'll also receive real-world opportunities to work directly with employers through internships and other collaborative learning experiences.

WHERE COMMUNICATION GRADUATES

WORK

- *The News Tribune* (Tacoma)
- KING Broadcasting
- TV (*Glee*, *The Oprah Winfrey Show*)
- *South Sound Magazine*
- *Seattle Post-Intelligencer*
- Virginia Mason Foundation
- McCallum Print Group/DCG
- U.S. State Department
- KIRO-TV
- KOMO-TV
- Nike
- Dark Horse Comics
- Marquette University
- The Boeing Company
- Nordstrom Corporate
- Intel

GO TO GRADUATE SCHOOL

- University of Oregon
- University of Southern California
- University of Colorado-Boulder
- Indiana University
- Washington State University
- San Jose State University

LEARN MORE

WWW.PLU.EDU/COMMUNICATION

“Graduating from the School of Arts and Communication means that you have been working on not only a degree, but concrete knowledge and skills that will transfer right into the work you will do as a professional—regardless of the field. Be it professionally writing, managing a classroom full of music students or understanding the importance of white space and using a grid— you can apply your knowledge and skills to any job anywhere.”

— ALEX PETERSON, CLASS OF 2012



THEATRE & DANCE

PLU's Theatre program is a community of artists committed to producing and sharing productions of the highest professional standards of artistry designed to challenge, entertain and inspire audiences.

In our challenging Theatre program, housed within the beautiful new Karen Hille Phillips Center for the Performing Arts, we train you in all aspects of theatre art—from acting and directing to technical theatre and design. We present four faculty-directed productions each year, and students also produce a musical review, a one-act play festival, evenings of improvisation and other off-the-mainstage shows.

As a Theatre student, you'll have numerous opportunities to explore each facet of the production process: acting, directing, building and painting sets, designing and realizing sound and lights, creating costumes, gathering props, working backstage and stage-managing.



“PLU's emphasis on vocation allowed me to find my passion (theatre) and therefore gave me the drive to seek out a way to continue learning, while not being afraid to really strive to fulfill my vocation.”

—ANGELA TENNANT, CLASS OF 2012



PLU's Dance program provides opportunities in performance, composition, choreography, dance production, technique, dance history, movement for actors, yoga, ballroom and healing arts of mind and body. You also can minor in Dance and participate in performing groups.

LEARN MORE

WWW.PLU.EDU/THEATRE

WHERE THEATRE GRADUATES

WORK

- Broadway (*Next to Normal*, *Rock of Ages*)
- TV (*Star Trek*, *The Mentalist*, *NCIS: Los Angeles*)
- Oregon Shakespeare Festival
- Woolly Mammoth Theatre Company
- 5th Avenue Theatre (Seattle)
- Milwaukee Repertory Theater
- Seattle Repertory Theatre

GO TO GRADUATE SCHOOL

- The New School for Drama (New York City)
- Northwestern University
- University of Illinois-Urbana/Champaign
- Emerson College
- Roosevelt University
- Arizona State University

MUSIC

Distinguished teachers and talented students make the Department of Music at PLU a nationally recognized center for musical learning, serving and sharing. A talented, cohesive faculty of performers, composers and authors, drawn from the nation's finest conservatories and universities, strives to provide every student at the university with a meaningful and enriching arts experience, ranging from non-major private lessons or ensemble participation to core courses within four distinctive academic majors and two minors.

More than 190 concert performances at PLU every year present students, faculty artists and exciting guest performers with an incredible array of musical styles and media: choral, band, symphonic, operatic, solo, chamber and jazz. More than a dozen performing groups tackle music of all eras and styles—whether it's Bach, Beethoven, Bernstein or Basie, you will have an unforgettable hands-on experience. If you love music, you belong at PLU!



Taylor Whatley, a Class of 2015 Music Composition major, won numerous statewide composition competitions and had his works premiered by professional orchestras in the Pacific Northwest.

TRAVEL THE WORLD

All major music ensembles participate in a regular international and national touring schedule. Our choirs and orchestra recently performed in Germany, Sweden, Denmark, France and Austria, and our wind and jazz ensembles have played in Australia.

100% of Music Education majors find jobs within six months of graduation.

PLU PERFORMING GROUPS

- Choir of the West
- University Chorale
- University Singers
- University Men's Chorus
- Choral Union
- Opera
- Chapel Choir
- University Symphony Orchestra
- Wind Ensemble
- Concert Band
- Jazz Ensemble
- Jazz Combos
- Chamber Music Ensembles

WHERE MUSIC GRADUATES

WORK

- The Metropolitan Opera
- University of Washington
- Teatro Municipal de Santiago, Chile
- Seattle Pro Musica
- University of Kansas
- Omaha Symphony Orchestra
- K-12 education worldwide

GO TO GRADUATE SCHOOL

- The Juilliard School
- Eastman School of Music
- Yale University
- Curtis Institute of Music
- Brown University
- University of Notre Dame
- New England Conservatory of Music

LEARN MORE

WWW.PLU.EDU/MUSIC



CO-CURRICULAR OPPORTUNITIES



FORENSICS (SPEECH AND DEBATE)

CENTER FOR MEDIA STUDIES

MEDIALAB

SOCIETY OF PROFESSIONAL JOURNALISTS

AMERICAN CHORAL DIRECTORS ASSOCIATION
(student chapter)

COLLEGIATE WASHINGTON MUSIC EDUCATORS CONFERENCE

MU PHI EPSILON

AMERICAN INSTITUTE OF GRAPHIC ARTS
(student chapter)

NATIONAL COUNCIL ON EDUCATION FOR THE CERAMIC ARTS
(student chapter)

PLUTONIC AND HERMONIC
(student a cappella groups)

CLAY CROWS
(student improv group)

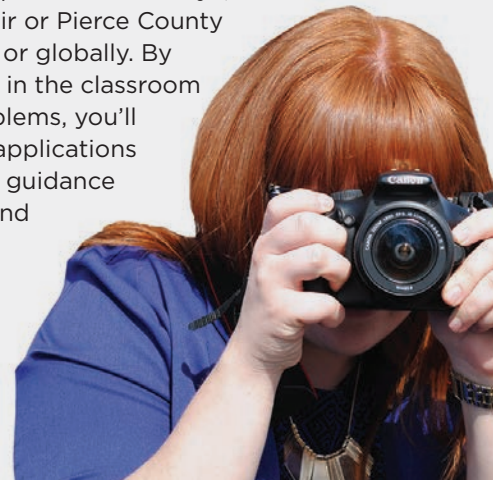
STUDENT MEDIA
(*The Mooring Mast* newspaper, Mast TV, LASR radio)

CENTER FOR MEDIA STUDIES

The Center for Media Studies serves the community by providing assistance with communication and media-related projects. The Center, housed within the School of Arts and Communication, leverages outstanding programs in Journalism, Public Relations, Advertising and Graphic Design to provide unprecedented learning opportunities through work with on-campus and external clients.

BEYOND THE CLASSROOM

Students have the opportunity to complete at least one internship, whether locally (The Washington State Fair or Pierce County Transit, for example) or globally. By using what you learn in the classroom to solve real-life problems, you'll realize the practical applications of your studies (with guidance from an instructor) and become an actively contributing citizen and community member through your service.



WHERE YOU WILL LEARN AND PERFORM



KAREN HILLE PHILLIPS CENTER FOR THE PERFORMING ARTS

The newly renovated Karen Hille Phillips Center for the Performing Arts at PLU is the premier performing arts center in the South Sound. It includes two performance spaces—the mainstage and studio theater—as well as a scene shop, art gallery, costume design shop and dressing and make-up rooms. While the mainstage lends itself to large productions, the studio theater, a black-box-style performance space, is ideal for small, intimate settings. Both theaters boast top-of-the-line technology, with new lighting systems, state-of-the-art control boards and LED lights.

AIDA INGRAM HALL

Ingram Hall houses a variety of resources, including: computer labs; the Center for Media Studies; the MediaLab studio; forensics squad room; larger studios for art education, ceramics, graphic design, letterpress, photography, printmaking and sculpture; and the Boge Library, featuring more than 1,200 books and resources. Ingram features two gallery spaces: the University Gallery, which hosts exhibitions from professional artists, faculty and students, and Wekell Gallery, which is used as a teaching space.



MARY BAKER RUSSELL MUSIC CENTER

The Mary Baker Russell Music Center includes: choral and instrumental rehearsal spaces; faculty studios; practice rooms; a music library; electronic music labs; classrooms; and the acoustically impressive Lagerquist Concert Hall, which houses the Gottfried and Mary Fuchs Organ, the largest university-based organ on the West Coast. This building also features the magnificent Chihuly *Glass Roses* installation in the lobby, and the Amphitheater, the perfect location for outside concerts.



SCHOOL OF ARTS AND COMMUNICATION

253.535.7150 | soac@plu.edu | 253.536.5063 (Fax)
Ingram Hall 101
Tacoma, WA 98447-0003

PACIFIC LUTHERAN UNIVERSITY
WWW.PLU.EDU/SOAC