



# The Sewanee Mountain MESSENGER

VOL. XXVI No. 36

Thursday, October 7, 2010

Published as a public service for the Sewanee community since 1985.

## Public Invited to SAS Dedication of Wade Hall for the Sciences

The public is invited to the St. Andrew's-Sewanee School dedication of the Wade Hall for the Sciences on Saturday, Oct. 9 at 1:30 p.m. on the lawn of Wade Hall. The Rev. William S. Wade, retired head of school for whom the building is named, will be in attendance, as will the two lead donors on the project, Doug Campbell, SMA'59, of Naples, Fla., and Doug Ferris of Memphis, both trustees of the school.

The \$2.1 million, 8,200 sq. ft. facility includes naturally lit science classrooms and laboratories. A link to the building's real-time dashboard

to monitor energy and resource use is available at <www.sasweb.org/about-sas/sustainability>, as is more information about the school's other sustainability efforts.

SAS students and faculty have been enjoying the natural light, bright classroom spaces and beautiful campus vistas afforded by the building since they moved in at the beginning of the school year. Now is the opportunity for the general public to celebrate this innovative new space, tour the facility and learn about its cost-effective green design.

## Fall 2010 Deer Pre-Cull Begins

For the 11th consecutive year, the University plans to hold a two-phased deer cull on the Domain for the purposes of herd management, ecosystem balance and community safety. The phases consist of a fall pre-cull and a Christmas break cull.

This year, the pre-cull will occur on the following dates: Oct. 9-10, 16-19 and 23-24; Nov. 6-7, 20-21, 24 and 26-28; and Dec. 4-5 and 11-12. Hunting will begin at sunrise and end at sunset on these dates. There will be no hunting between 10 a.m. and 2 p.m.

During the pre-cull, hunting will be archery only—with no exceptions. Hunting will be conducted in large

perimeter zones. Pre-cull maps of the areas will be printed in the Messenger and displayed at duPont Library, the SPO and the bulletin board at the Sewanee Market.

The following trails will remain open at all times: Tennessee Avenue, Rails-To-Trails bike path, entire Perimeter Trail, Bridal Veil Falls trail, Piney Point trail, Beckwith's Point trail, Caldwell Rim trail, Solomon's Temple trail in Thumping Dick Hollow. Bow hunters will be located at least 100 yards from trails and fire lanes.

In an effort to increase the number of deer taken, two changes have been

(Continued on page 5)

## "Half Moon Mountain Magic" Will Help Preserve the Fiery Gizzard

"Half Moon Mountain Magic" will give everyone on the Plateau the chance to be a wizard for the Fiery Gizzard on Oct. 15, 5-9 p.m. in the DuBose Conference Center pavilion in Monteagle. Special children's events will be held from 5 to 6 p.m. Admission is free.

In keeping with the evening's wizard theme, children are encouraged to dress as a character from Harry Potter or come as an environmentally friendly wizard of any kind. A children's costume parade with prizes will take place on the main stage at 6 p.m.

A special children's tent, open from 5 to 6 p.m., will have fortune tellers, face painting and "Critters of Fiery Gizzard"—snakes, turtles, possums and more—introduced by wildlife rehabilitator Margaret Matens.

Four popular area bands are donating their magical talents: Baz-zania, Peckerwood (appearing under their new name, Broad Mountain Brewgrass), the Fiery Gizzard String Band and Sarah Mallory. An enchanting array of food will include Fiery Gizzard blizzards and chili from Mountain Breeze, pizza and drinks from Lupi's Pizza of Chattanooga, and desserts and coffee from the Dutch Maid Bakery. A percentage of refreshment sales will be donated to the Fiery Gizzard Project. Other highlights include door prizes and a new Fiery Gizzard T-shirt designed by Jim Ann Howard.

Fiery Gizzard Head Wizard Harry

Yeatman will welcome everyone and thank the Mountain's many environmental supporters. Sponsored by the Friends of South Cumberland State Recreation Area (FSCSRA), the fundraiser seeks to help the Land Trust for Tennessee raise the last \$620,000 of \$8.1 million to purchase and preserve 6,200 acres of the western bluff of Fiery Gizzard Cove and more than a mile and a half of the Fiery Gizzard Trail.



Fiery Gizzard is a particularly beautiful part of the South Cumberland State Recreation Area. Fiery Gizzard Trail is a 17-mile, one-way trail featuring cascading streams, waterfalls, panoramic overlooks, rocky gorges, gentle slopes, lush woodlands and four primitive campgrounds along its route. It has been ranked as one of the top 25 backpacking trails in the country by Backpacker magazine.

For more information or to volunteer as an individual or business supporter, contact Matens at <margaretmatens@yahoo.com>. For information about the Fiery Gizzard Project see <www.fierygizzard.org>.

## Street Dance Kicks Off Campus Celebration

The University of the South will host a street dance to kick off the campus celebration of Founders' Day. The party will be held from 7 to 9 p.m. on Friday, Oct. 8, on the lawn between duPont Library and Spencer Hall. The Nashtones <www.nashtones.com> will provide music, and student and local organizations will offer food for sale. The community is invited. The event is part of the "Cornerstone for Tomorrow" celebration around the installation of John McCardell as the University's 16th vice-chancellor and president.

## Texas Avenue Closed

Texas Avenue in front of the University's Fowler Center will be closed, beginning at 5 p.m. on Monday and Tuesday, Oct. 11 and 12. It will reopen later each evening. The detour will be around Louisiana Circle, rejoining Texas Avenue at Allen Gipson Lane.

## Latin American Music Oct. 8

Laura Fuentes y Calicanto, a Latin American guitarist and vocalist, will perform at a coffee house event in the University's Ayres Multi-Cultural Center, located on 14 Willie Six Rd., on Friday, October 8, from 8 to 10 p.m. Fuentes has a lovely voice and creates beautiful music on the traditional Chilean and South American instruments that complement the poetry in the lyrics.

Her songs, sung in the native voices of South and Central America, capture the magic of Andean and Caribbean music.

Come out and enjoy a lovely evening of music. Stirling's will provide the coffee and tea. The event is free and open to the public.

## Lease Committee Agenda Deadline

The next meeting of the Lease Committee is scheduled for Wednesday, Oct. 20. Agenda items are due in the Office of the Superintendent of Leases in Carnegie Hall by 4:30 p.m. on Wednesday, Oct. 13.

## INSIDE

Letters; Serving; Senior menus.....2  
BIRTHS; Election information.....3  
OBITUARY; Stewart; CCJP peace vigil;  
Church news; Join St. Augst guild....4  
Deer Cull map; Blue Monarch grads...5  
Snowden dedication; Climate change  
work party; Fowler ctr closings.....6  
Caldwell trail open; Local meeting info;  
Lunch/Learn; Emerg services report;  
Food panel; New director King.....8-9  
A&E; SUT; Breyer exh; Farm tour cancelled;  
Tims Ford Heritage Days; Meet Chef Wright; 'Smile' art exhibit...10-11  
SAA Ranch gives aid; Lease Comm rpt;  
Emeritus Assoc mtg; Campus vandalism;  
Sew Herbarium events.....12-13  
SCOOP: SAS Hamlet Oct 15-17; SMS  
Fantastic Fridays; SES honor rolls;  
SES menu; Girl Scouts meet.....14  
SPORTS: Home games; area rpts; SAS  
good sports award; Overtime.....15-17  
NATURE NOTES, WX, Pets; South  
Cumberland State Park hikes.....18

## Vice-Chancellor's Installation, Honorary Degrees on Founders' Day

On Tuesday, Oct. 12, during the annual Founders' Day Convocation in All Saints' Chapel beginning at 12:30 p.m., John M. McCardell Jr. will be installed as the 16th vice-chancellor and president of the University of the South. Two honorary degrees will be awarded, and new members of the Order of Gownsmen will be

recognized.

The convocation is the centerpiece of a series of events in October celebrating McCardell's installation and will include the convocation address by Vice-Chancellor McCardell; the awarding of honorary degrees to the Most Rev. John Sentamu, Archbishop of York, and Emory Thomas, Regents Professor of History Emeritus at the University of Georgia; and the conferral of gowns on new members of the Order of Gownsmen, the University's society recognizing outstanding academic achievement.

With the theme "Cornerstone for Tomorrow," installation events include academic, cultural and social opportunities for the University and broader communities. These include the commemoration, 150 years to the day, of the laying of the original cornerstone, which will take place on Louisiana Circle, site of the original University cornerstone, on Sunday, Oct. 10, at 10 a.m. Attendees will then process to All Saints' Chapel for the Celebration of Holy Eucharist at 11 a.m.

(Continued on page 7)



The Most Rev. John Sentamu

## Council Elects Hurst to Campus Master Plan Committee

At the Sept. 27 Sewanee Community Council meeting, a landmark decision by Vice-Chancellor John McCardell resulted in the election of council representative Michael Hurst to serve on the steering committee engaged in updating the Campus Master Plan for the University.

In response to issues raised by the Sewanee Leaseholders' Association at its Aug. 23 meeting, Jerry Forster, University chief financial officer, discussed land use and campus master plan activity since 1992. "The Domain 2020 Plan of 1992" anticipated population growth of 1,040 to 1,300 by 2020 and made recommendations for a more residential campus.

Forster mentioned several unpopular residential development concepts that were not pursued, including development along Tennessee and Kentucky avenues and in the Lake Cheston and Lake Dimmick areas. In contrast, the Wiggins Creek development is entering phase three, and the Parson's Green development was accomplished by

rezoning that allowed smaller lots and mixed commercial-residential use in the downtown area.

The Fowler Center was expanded, and McClurg Dining Hall and Spencer Hall were built. A master plan update is underway, and Forster said he anticipates that residence halls will be on the front burner for current planners.

Professor David Haskell, Sewanee

(Continued on page 6)

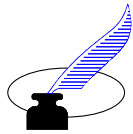
## Sewanee Woman's Club Birthday

The Sewanee Woman's Club will meet on Monday, Oct. 11, in St. Mary's, Sewanee. A social begins at 11:30 a.m. followed by the noon luncheon. Club members and guests will celebrate their 80th year with a special presentation of the club since 1930. The club appreciates the help of John Tilford in University archives in gathering information from each decade of

(Continued on page 6)

THE SEWANEE MOUNTAIN  
MESSENGER  
P.O. Box 296  
Sewanee, Tennessee 37375

# Letters



## HOUSE FIRE LEAVES GRATEFUL HEARTS FOR COMMUNITY SUPPORT

To the Editor:

This letter comes with a sincere thank you and grateful hearts after the loss of our home to fire. Our hearts are broken, but also overwhelmed by the outpouring of love that has been given to our family. This has meant so much to us.

We have so many special people to thank. First, we thank our Lord above for protecting, watching over and loving us through it all. Next, we have an extra special thank you to the Sewanee Fire Department—these guys are great! From the time we called in the fire, they were there within seven minutes! These guys are experts at what they do. They worked as a team and got the fire put out quickly and then added moral support to our family. We thank our families for uniting to help push, pull and drag us through this horrible time ... in love, of course! We thank our friends, both old and new. We thank our community and surrounding communities for their love and generosity. To our churches, for the prayers, love offerings, benefits and household showers, we say thanks. To Emerald-Hodgson Hospital, area businesses and other special organizations, thank you so much. Now, to our friends of the University, we must thank our co-workers, the students, employees, sororities and fraternities! The support we have received from EVERYONE is unbelievable! Please keep us in your prayers and know we love you all.

### LETTERS TO THE EDITOR:

Mail your letter to the Sewanee Mountain MESSENGER, P.O. Box 296, Sewanee TN 37375, or come by our office, 418 St. Mary's Ln., or send your e-mail to <news\_messgr@bellsouth.net>. Please include your name, address and daytime telephone number. Preference is given to letters under 250 words. Unsigned letters will not be used. Letters are edited for space and clarity. With regard to the Nov. 2 elections, to ensure fairness, no letters for or against any candidate will be published in the Messenger after the Oct. 21 edition.

Last, but certainly not least, we must thank our new special friend who may surely have saved our lives, "Mr. Skunk." Intriguing, I know, but that is a story for another day.

*The Gilliam Family: Tony, Lisa, Robin, Dustin and Isaiah*  
Sewanee ■

### IN PRAISE OF FATHERS AND SONS

To the Editor:

Re: Overtime with Coach Shack. John Shackelford's father is terminally ill. In "Overtime" he has paid tribute to the qualities taught him by a kind and loving father. Speaking for his many admirers, we feel John's life is a daily tribute to his father's wisdom in rearing a wonderful example of all that is fair and right.

*Bob Short, Laurence Alvarez and Woody Register*  
Sewanee ■

### FEDERAL BUDGET CLARIFICATIONS

To the Editor:

In her letter of Sept. 30, Susan Clark says that we should not blame President [George W.] Bush for his budget deficits because Democrats controlled Congress and spending bills originate in the House. In fact, although the House must pass the budget first and then send it to the Senate, it is the president who, by law, proposes the budget. And it was President Bush who, in February 2008, proposed the \$3.1 trillion fiscal year 2009 budget, not President Barack Obama and not the members of the House, either Democrat or Republican. In addition, President Bush did not include spending for the Iraq or Afghanistan wars in any of his budgets, but requested off-budget supplemental spending each year. Another omission from the \$3.1 trillion Bush budget was the \$700 billion Troubled Asset Relief Program (TARP) funding, another program proposed and pushed by President Bush and his treasury secretary, Hank Paulson. These proposals were all before Obama was elected, much less president. So yes, it is President Bush who left a \$1.3 trillion deficit; they were his proposals; it was his spending. Likewise, the FY 2000 budget was Clinton's, not the Republicans in Congress. Congress changed neither budget substantially.

Secondly, Ms. Clark is concerned about Bush's tax cuts to the top two

percent of Americans. In fact, everyone will receive a continuation of the tax cuts on the first \$250,000 of income they pay tax on. An important point is that the increase is on the amount over \$250,000 after all exemptions and deductions are taken. This means after subtracting mortgage interest, property taxes, state income or sales tax, charitable giving, etc. For small businesses, this would include subtracting half of the Social Security and Medicare taxes. So one would have to make considerably over \$250,000 to see a tax increase and then it is \$20 for every \$1,000 made on the income over \$250,000 after subtracting exemptions and deductions. That \$20 per \$1,000 would hardly make a difference in deciding to hire someone or not, especially considering the small business tax credits proposed by President Obama.

*Pat Pulliam*  
Sewanee ■

### GRATITUDE FOR COMMUNITY COMMITMENT

To Geraldine Piccard:

I cannot help but express my sentiments toward the announcement of your retirement as editor. As odd as it may seem, it marks a milestone within my own life. For as long as I can remember, you have held your position, and the idea of your retirement is as foreign to me as when I first realized that I could no longer stop at Rose's Grocery for a Sundrop. I was so touched when you called to congratulate me on the birth of my first child, after you had received the notice at the Messenger from the hospital, and truly experienced, firsthand, the joy of your commitment to the community. I have had the honor of meeting your successor and find her to be a gentle and gracious soul much akin to your own. I wish you the best of luck in your future endeavors, hope that you have time well-spent with your family, and that you may continue to create more of your beautiful and lovely art.

*Mindy Melton*  
Monteagle ■

*Courtney Zeidler*  
Sewanee ■

## THE SEWANEE MOUNTAIN MESSENGER

418 St. Mary's Ln.  
P.O. Box 296  
Sewanee, Tennessee 37375  
(931) 598-9949  
Fax: (931) 598-9685

[www.sewaneemessenger.com](http://www.sewaneemessenger.com)



Editor/Publisher:

Geraldine Hewitt Piccard

Circulation: Ray Minkler

Contributors:

Staff: Janet B. Graham  
Kathy Hamman  
Leslie Lytle  
April H. Minkler  
Peg Palisano

Phoebe & Scott Bates  
John Bordley  
John Shackelford  
Pat Wiser  
Jean & Harry Yeatman

*Published as a public service to the Sewanee community. 3,700 copies are printed on Thursdays, 46 times a year, and distributed to 26 Sewanee-area locations for pickup free of charge.*

*This publication is made possible by the patronage of our advertisers and by gifts from The University of the South (print production) and the Sewanee Community Chest.*

**SUBSCRIPTIONS \$75 first class.**



## Serving Where Called

Seven years ago this column began to support the large number of reservists and National Guard members called up for active duty to serve in the war in Iraq. About 50,000 troops remain in Iraq to support and train their military and assist with counterterrorism.

On Dec. 1, 2009, President Barack Obama announced he was sending additional troops to Afghanistan to focus on reversing the Taliban's momentum. Today thousands of our troops are deployed in this volatile area.

This is a reminder that someone else is standing guard and facing fire for us. Please keep the following individuals, their families and all those who fight for freedom in your prayers:

Ron Bailey  
Nick Barry  
Robyn Cimino-Hurt  
James Gregory Cowan  
Robert S. Lauderdale  
Alan Moody  
Brian Norcross  
Christopher Norcross  
Dustin "Dusty" Lee Parker  
Brandon Parks  
Michael Parmley  
Greg Rinkes  
Charles Schaefer  
Charles Tate  
Jeffery Alan Wessel

If you know of others in our Mountain family who are in harm's way, please give their names to American Legion and Auxiliary member Louise Irwin, 598-5864.

**Come on in, breakfast is ready!**  
**MENTION THIS AD FOR A FREE CUP OF COFFEE!**

FRESHLY BAKED bread and biscuits, our own blend of coffee, bacon and sausage, extra-large eggs, French toast, omelets and more!

**BREAKFAST**  
IN COWAN  
111 E. Cumberland • 967-0227  
6 a.m. to 2 p.m. • Closed Tuesday

**MOBILE VETERINARY SERVICES**  
(931) 607-5239  
For Dogs, Cats & Horses  
TRACI S. HELTON, DVM  
Certified in Animal Chiropractic by the American Veterinary Chiropractic Association  
CONVENIENT PATIENT SERVICES AT YOUR HOME  
Vaccinations, Wellness Exams & Ultrasound Services  
Serving Franklin County and Surrounding Areas by Appointment

**Bradford's**  
Nursery & Landscaping  
Full Service Landscape Company  
Residential & Commercial  
**FOR FALL DECORATING**  
Beautiful mums, pansies, cabbage, kale, cornstalks, straw and pumpkins.  
Stop by Our Fully Stocked Garden Center  
Richard, Nancy & Matt Bradford, Owners  
Over 61 Years Combined Experience  
Mon-Sat 9:00-5:30 931-967-1626  
1136 Dinah Shore Blvd. 580-1626  
Winchester 607-5629

**Senior Center Menus**  
The Sewanee Senior Citizens' Center is open Monday-Friday from 9 a.m. until 1 p.m. Lunch is served at noon. The suggested donation is \$3 (50 years of age or older); \$5, under 50. To ensure adequate food preparation, please call 598-0771 the day before to reserve a takeout meal or to eat at the center. Menus follow:  
**Oct. 11:** Pork chops, mashed red potatoes, green pea salad, rolls, dessert.  
**Oct. 12:** Lena's chicken w/rice, green beans, rolls, dessert.  
**Oct. 13:** Open-face roast beef sandwich, mashed potatoes, slaw, dessert.  
**Oct. 14:** Limas w/ham, fried potatoes, cabbage, cornbread, dessert.  
**Oct. 15:** Vegetable soup, grilled ham/cheese sandwich, assorted desserts.  
Menus may vary. For information call the center at 598-0771.

**Ivy Wild**  
NEW AMERICAN CUISINE  
36 BALL PARK ROAD, SEWANEE  
THURSDAY - SATURDAY, 5:30 - 9PM  
BYO WINE  
RESERVATIONS RECOMMENDED  
IVYWILDRESTAURANT@GMAIL.COM  
931.598.9000

**MESSENGER CONTACTS**  
*News & Calendar:*  
(931) 598-9949  
*Display Advertising:*  
Janet Graham  
(931) 598-9949  
*E-Mail Addresses:*  
News & Calendar—  
news\_messgr@bellsouth.net  
Display Ads—  
ads\_messgr@bellsouth.net  
Classified Ads—  
class\_messgr@bellsouth.net  
FAX: (931) 598-9685  
**DEADLINES**  
*News & Calendar:*  
Monday, 5 p.m.  
*Display Ads:*  
Friday, 5 p.m.  
*Display Classifieds:*  
Friday, 5 p.m.  
*Classified Ads:*  
Tuesday, noon  
**HOURS OF OPERATION**  
*Monday, Tuesday, Wednesday & Friday*  
9 a.m. to 5 p.m.  
*Thursday*  
11:30 a.m. to 1:30 p.m.

# New Arrivals

## Noah Jason Lee Gipson

Noah Jason Lee Gipson was born on Oct. 1, 2010, in Southern Tennessee Medical Center to Cristy and Jason Gipson of Altamont. He weighed 5 lbs., 14.4 oz., and was 17.75 inches long. He joins his sisters, Lily and Carly. Maternal grandparents are Tina Lauderdale of Cowan and Bobby Sisk of Winchester. Paternal grandparents are Cheryl and Leeroy Wilkinson of Cowan and the late Wayne Gipson of Sewanee.

## Travler "Rowdy" Barker Morris

Travler "Rowdy" Barker Morris was born on Sept. 27, 2010, in Erlanger East Hospital, Chattanooga, to Laura Anderson and Kris Morris of Sewanee. He weighed 7 lbs., 14 oz., and was 22 inches long. He joins his sister, Wylie. Maternal grandparents are David and MaryAnne Anderson of Stone Mountain, Ga. Paternal grandparents are Melvin Morris of Sewanee and Nickie Peardon of Guild, Tenn.

## Kylie Nicole Tate

Kylie Nicole Tate was born on Oct. 1, 2010, in Southern Tennessee

Medical Center to Brenna Nunley and Joey Tate. She weighed 5 lbs., 13 oz., and was 18.5 inches long. She is the couple's first child. Maternal grandparents are Tania Curtis and Roger Nunley of Coalmont. Paternal grandparents are Joan and Harvey Tate of Gruetli-Laager.

## Vote Early

The Tennessee State Primary and the Franklin County General Election will be held on Nov. 2. Early voting will be Oct. 13-28, in the Franklin County Election Commission, 839 Dinah Shore Blvd., Suite 1, Winchester. For information call 967-1893.

Free delivery for orders of \$20 or more.

**SMOKED PRIME RIB DINNER**  
EVERY FRIDAY NIGHT - \$12

**HOLY SMOKES**  
BBQ Heavenly Scent

Mouth-Watering Slow Smoked BBQ

Pork • Chicken • Brisket • Ribs • Turkey

Catering Available for Any Size Event

Open Tue-Thu 11-8; Fri & Sat 11-9; Sun 11:30-3; closed Mon



335 West Main St.  
Monteagle  
(Across from CVS)

(931) 924-PORK  
<www.holysmokes.com>  
bbqtn.com

[www.sewaneemessenger.com](http://www.sewaneemessenger.com)

*Things not possessed are always best, but when possessed are like the rest.*

From "Two-Liners Stolen From Others" by Joe F. Pruett

# Sewanee Realty

931.598.9200 [www.SewaneeRealty.info](http://www.SewaneeRealty.info)  
115 University Ave., Sewanee

**Margaret Donohue,**  
Broker  
931.636.5599

**John Brewster,**  
Affiliate Broker  
931.636.5864



MLS 1214614 - 336 Nancy Wynn Rd., Sewanee. \$249,999



BLUFF - MLS 1162042 - 226 Rattlesnake Spring Lane, Sewanee. \$699,000



MLS 1113783 - 120 University Ave., Sewanee. \$228,000



MLS 1094735 - 215 Shadow Rock, Monteagle. \$175,000



BLUFF - MLS 1177179 - 668 Rattlesnake Spring Road, Sewanee. \$466,000



MLS 1094724 - 225 Shadow Rock, Monteagle. \$225,000

### BLUFF TRACTS

Saddletree Lane	1207074	\$ 85,000
Jackson Point Rd	1193094	\$ 99,998
Deepwoods Rd	1183507	\$185,000
Keith Springs Mtn	1166115	\$159,900
Keith Springs Mtn	1166132	\$126,900
Old Sewanee Rd	951522	\$221,000
Keith Springs Mtn	1153423	\$ 89,000
Jackson Point Rd	1111807	\$ 99,000
Jackson Point Rd	1111815	\$ 99,000
Jackson Point Rd	1099422	\$218,000
Jackson Point Rd	1101401	\$ 99,000
Lot 36 North Bluff	1064111	\$ 99,900
Saddletree Lane	836593	\$ 75,000
Raven's Den	1015362	\$129,000
Jackson Point Rd	850565	\$ 80,000



MLS 1120671 - 319 Florida Ave., Sewanee. \$298,000



MLS 1189973 - 216 Kentucky Ave., Sewanee. \$219,000



MLS 1151539 - Clifftops - 921 Poplar Place. \$675,000



MLS 1142954 - 1200 Little St., Winchester. \$98,000



BLUFF - MLS 1183505 - 2807 Deepwoods Rd., Sewanee. \$465,000



MLS 1168414 - 127 O'Dear Rd., Sewanee. \$199,000



MLS 1193221 - 1425 Clifftops Ave. \$229,900



MLS 1170673 - 340 Wrens Nest, Monteagle. \$145,000



MLS 1160269 - 231 North Carolina Ave., Sewanee. \$366,000



MLS 1137205 - BLUFF 121 Sherwood Trail, Sewanee. \$929,000



BLUFF - MLS 1198478 - 3335 Jackson Point Rd. \$314,900



BLUFF - MLS 1101481 - 196 Oleander Lane, Sewanee. \$859,000



MLS 998887 - 925 Dogwood Dr., Clifftops. \$199,000



MLS 1158183 - 1815 Laurel Lake Dr., Monteagle. \$227,000



MLS 1219905 - 170 Tate Rd., Sewanee. \$492,000



MLS 1176372 - 104 Morgan's Steep, Sewanee. \$285,000



MLS 1221591 - 1290 Old Sewanee Rd., Sewanee. \$249,500



MLS 1203016 - 94 Maxon Lane, Sewanee. \$429,900



MLS 1186739 - CLIFFTOPS BLUFF - 1323 Overlook Dr. \$699,000



MLS 1191006 - 635 Alabama Ave., Sewanee. \$285,000



MLS 1168430 - 62 Abbott Martin Lane, Sewanee. \$318,000



MLS 1071445 - 611 Huckleberry Place, Clifftops. \$339,000

### LOTS & LAND

Sarvisberry Pl	1207077	\$83,000
Bear Den Ct	1165221	\$97,000
Keith Springs Mtn	1166133	\$46,900
Browbend Dr	1166181	\$95,000
Browbend Dr	1166186	\$95,000
Browbend Dr	1166189	\$180,000
Bear Den Ct	981360	\$35,000
Bear Den Ct	981371	\$35,000
Bear Den Ct	981377	\$35,000
Saddletree Lane	892954	\$38,000
Saddletree Lane	892958	\$35,700
Saddletree Lane	892961	\$28,700
Jackson Pt. Rd	686392	\$29,000

RENTAL - Mississippi Ave., Sewanee.

## Decherd Mission Singing Set

Decherd Mission Independent Church, located on Highway 127 next door to Russell Mason Tractor, will hold its monthly singing on Saturday, Oct. 9. Concessions will be sold, starting at 5 p.m. Singing will begin at 6 p.m. The featured singers will be By Faith from Manchester. Pastor Jerry Denton and the congregation welcome everyone.

## Join St. Augustine's Guild

Looking for a meaningful activity? Want to try something new? Join St. Augustine's Guild. You will meet new friends, young and old, while providing a valuable service to the Sewanee community.

St. Augustine's Guild, founded in 1890, is a vital part of All Saints' Chapel. The guild is devoted to taking care of the altar linens, polishing the brass and silver used in the many services as well as arranging flowers for the nave and high altars. Each of these activities is scheduled on a rotating basis and participation is open to everyone in the community including University students.

To join the ranks, please call the chair of any committee that interests you: brass—Eleanor Dallas, 598-5640; flowers—Marcia Mary Cook, 598-9607; linens—Irene Hamer, 598-9574; and silver—Dayle Pringle, 598-2412. For information call President Betty Barton Blythe at (423) 837-4515.

## Good Samaritan Fund-Raiser

Cumberland Presbyterian Church will hold "A Night of Music" fundraiser to support Good Samaritan Ministries of Franklin County on Saturday, Oct. 9, from 6:30 to 8 p.m. The church is located at 200 2nd Ave., N.W., Winchester. Everyone is welcome, and donations will be accepted.

The evening will feature choirs from Cumberland Presbyterian Church, Good Shepherd Catholic Church, First Baptist Church Estill Springs and Winchester First United Methodist Church.

## Church News

### All Saints' Sponsors Taizé Services

The University All Saints' Chapel has announced that Taizé in Sewanee will return to St. Luke's Chapel. The service will be held on Friday, Oct. 22, and Friday, Nov. 19, during the Advent semester, and will return on the following Fridays during the Easter semester: Jan. 28, Feb. 25, Mar. 25, and April 29.

Taizé services usually last for an hour. The community is invited to attend any and all of these occasions. Taizé in Sewanee is sponsored by All Saints' Chapel and is an interdenominational joint ministry of the School of Theology and the College of Arts

and Sciences. These services are rich with opportunities to worship God with silent meditation, reflection, prayer and song.

All Saints' is seeking volunteers, especially musicians, experienced readers and those who enjoy singing, to serve on the ministry team. If you would like to join the Taizé ministry team, even as an occasional participant, please leave your name and e-mail address at the University chaplains' office (598-1274) or contact Sarah Kelb at <kelbsd0@sewanee.edu>.

### Hadley Morris at Growing in Grace

Growing in Grace will be held in All Saints' Chapel on Sunday, Oct. 10, at 6:30 p.m.

This week's speaker is Hadley Morris. Having spent her early childhood in Sewanee and her college years at the University, Morris returned to the Mountain with her family a year ago. She works on staff at St. Mary's Sewanee, a center for spiritual development, and offers yoga classes there to the greater Sewanee community. Her primary interest is contemplative spirituality grounded in the rich heritage of the Christian tradition.

### Midway Church of Christ Services

Keith Hamilton, minister of Midway Church of Christ, will be preaching two lessons this Sunday, Oct. 10. The 11 a.m. sermon is titled "I Will Build My Church." At 6 p.m. Hamilton will preach "Studies in Daniel: God's Proving."

The 10 a.m. Bible Study is a continuation of a study on "The Life of Christ." To obtain a CD of sermons, call Hamilton at 454-2196 or listen to his radio program on Sunday mornings at 7:30 on FM 94.5, AM 1440 or online at <wzyradio.com>.

Visitors are welcome. The Midway Church of Christ is located on 151 Otter Falls Rd., Sewanee.

## Benefit Planned for Glenn McBee

Family and friends of Glenn McBee are planning a benefit to collect contributions to his health care costs. The public is invited to a dinner in the American Legion Hall on University Avenue on Saturday, Oct. 23, from 4-7 p.m. The menu is fried chicken, baked beans, potato salad, rolls and dessert for \$7 a plate, dine in or carry out. There will be a cake auction.

Monetary donations are welcome and asked to be sent to Regions Bank, Glenn McBee Fund, 69 University Ave., Sewanee TN 37375

## Otey Offers "Living Well, Dying Well" Series

The Bishop Otey Society of Otey Memorial Parish will again offer the popular "Living Well, Dying Well" series. Presentations will be held on the following dates: Oct. 10, Nov. 14, Dec. 12, and Jan. 9. All are invited to join the discussions beginning at 10 a.m.

The end of life topics include: "The Final Conversation: What Might It Be?" presented by the Rev. Joe Ballard; "Caring for the Living and the Dying," presented by the Rev. Francis Walter; and "Final Arrangements," presented by Roy Elam. The final Sunday session on Jan. 9 will be a discussion about the entire series. For information call the church office at 598-5926.

## CCJP Will Hold Peace Vigil

The Cumberland Center for Justice and Peace invites the community to join in the Oct. 7 Peace Vigil at 5 p.m. on the corner of University Ave. and Highway 41A. The purpose of the vigil is to show support for a held-fast commitment to ending United States militarism in Afghanistan. Oct. 7 marks the ninth anniversary of the U.S. conflict in Afghanistan, the longest war in U.S. history. According to a recent poll by CBS News, 54 percent of Americans think the U.S. should set and hold to a timetable for withdrawal of U.S. troops.

The vigil is being sponsored by the Afghanistan War Opposition committee of the Cumberland Center for Justice and Peace. Participants are encouraged to wear black and to display a sign expressing their opposition to the war. Signs will be available at the vigil site. Participants may park in the Sewanee Gardener's Market lot. For information contact Leslie Lytle at 598-9979 or <sllytle@blomand.net>.



## Obituary

### Bonnie Jo Stewart

Bonnie Jo Stewart, age 63 of Winchester, died on Oct. 4, 2010, in her residence. She worked as a nurse. Preceding her in death were her parents, Della Guess and Joseph William Walker; and brothers Robert "Tubby" Walker, Floyd Walker and Leonard Walker.

She is survived by her husband, John B. Stewart of Winchester; daughters, Tammy Mae Gensler of Tullahoma and Betty Lynn Hicks of Cowan; sons-in-law, Randall Patty of Cowan and Michael Gensler of Texas; brothers Wayne (Geraldine) Walker of Decherd and David (Bonnie) Walker of Murfreesboro; sister, Betty (Danny) Wilkinson of Cowan; seven grandchildren; and six great grandchildren.

Funeral services were held Oct. 5 in the funeral home chapel, with Bro. George Guess officiating. Arrangements were by Moore-Cortner Funeral Home, Winchester.


## Sunday at Otey Parish

Please join the Otey Memorial Parish congregation for the celebration of the 20th Sunday after Pentecost at the Holy Eucharist, Rite II, at 8:50 and 11 a.m. Between services, Christian formation classes are held for youth preschool through high school ages.

For children, nursery care is offered for 0-2 years old and three levels of Godly Play classes for 3-year-olds to fifth-graders. Middle school youth are invited to attend "Photography: Grateful Reflections," led by Stephen and April Alvarez. Students will discuss pictures they have taken during the week as a way to explore and understand God's presence in creation. High school youth are encouraged to "Text and Teach," led by the Rev. Joe Ballard and Betty Carpenter.

There are four classes for adults: the Adult Forum welcomes Ballard, who will present and lead a discussion on "Final Arrangements: Planning Your Funeral."; the Lectionary Class, led by Pete Trenchi, will study this week's Gospel lesson: Luke 17:11-19, where Jesus healed 10 lepers. The Seekers Class, led by Robin Reed, will view a short "Godfilm" and discuss growing through tough times in relationships. The No-Class Class, which is new to Otey Parish, will meet in the parish hall kitchen and share coffee and fellowship.

Nursery care is available from 8:30 a.m. until 12:30 p.m. for children 0-3 years old and for those children who might not quite be ready to sit through "big church." Coffee hour follows the second service. Questions: Robin Reed (636-0010).



**THIS WEEK AND UPCOMING AT ST. MARY'S SEWANEE**

**Yoga Tuesdays, 9-10:15, & Thursdays, 3:30-4:45**  
offered by Hadley Morris, RYT

**Centering Prayer Support Group**  
Tuesdays, 4 to 5:30

**The Buddha's Four Noble Truths: A Blueprint for Dancing with Life**  
Oct 8-10; Phillip Moffitt

**Centering Prayer as An 11th Step Practice**  
Oct 17-19; Roberta Oster and Becky Hannah

**All Things Made New: On Being a 21st Century Christian** Oct 29-31;  
The Rev. Dr. Samuel T. Lloyd III

A Center for Spiritual Development  
Call (800) 728-1659  
or (931) 598-5342  
www.StMarysSewanee.org  
StMarysSewanee@bellsouth.net

*"We can do not great things — only small things with great love" —Mother Teresa*

## Stillpoint

Individual and Group Psychotherapy      Massage and Bodywork

**Betty Phillips, M.A.** Individual & Group Psychotherapy **598-5151**  
**Bethany Lohr, Ph.D.** Clinical Psychologist **598-0906**  
**Maryellen McCone, M.A.** Individual & Group Psychotherapy **636-4415**  
**Robin Reed-Spaulding, Ph.D.** Clinical Psychologist **636-0010**  
**Kate Gundersen, LCSW** Individual Psychotherapy **235-4498**  
**Regina Rourk, LMT, CNMT** Massage and Bodywork **636-4806**

## Take Advantage of What Nature Provides



**Save Rainwater!**

Well water and municipal water were once rainwater. Rainwater collected from a roof simply has a shorter journey to your tap.

Building Custom Rainwater Collection Systems and Drainage Systems since 1997.

## Water Solutions

A Division of Sumpter Solutions, LLC.

931.598.5565      [www.sumptersolutions.com](http://www.sumptersolutions.com)  
*Joseph Sumpter, C'97, owner*

American Rainwater Catchment Systems Association  
 International Rainwater Catchment Systems Association  
 Licensed and Insured • References Available

**Green is not a color. It's a philosophy.**



**GOOCH-BEASLEY LLC,**  
**Certified Contractor**  
**Peter R. Beasley**  
**(931) 924-5555**  
[www.gbrealtors.com](http://www.gbrealtors.com)

## Deer Pre-Cull from page 1...

made to the pre-cull this year. In addition to the dates listed above, hunting will take place between sunrise and 8:30 a.m. on all weekdays, beginning Oct. 11 and ending Dec. 17, except there will be no hunting on Thanksgiving Day. Second, the hunting area has been increased this year: the zone beyond the Equestrian Center has been extended farther out Breakfield Road and an all-new zone near Lake Dimmick has been added.

All members on the veteran cull team will attend safety training sessions, as in previous years. Hunters have been pre-selected from a pool of University faculty, staff and students, and their family members.

The Community Action Committee (CAC) will process a number of deer and distribute venison to families. The police department will also make surplus whole deer available to members of the community.

Below, map of Deer Pre-Cull Zones



## Reasons to Celebrate at Blue Monarch

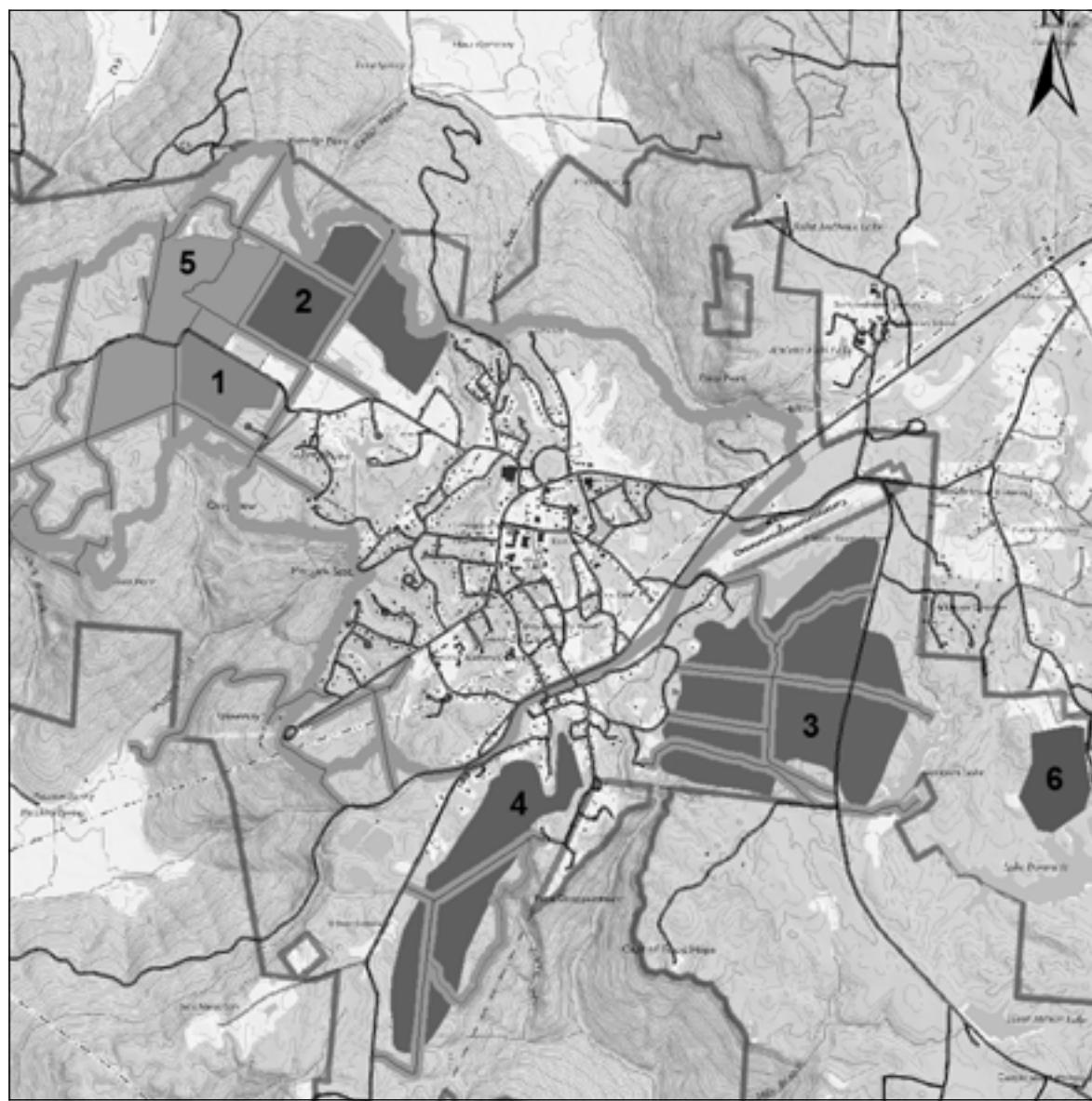
Blue Monarch recently celebrated the graduation of three of its residents, Jessica Ramsey, Misty Pack and Donna Manley (pictured above), with a crowd of over 100 friends, supporters and volunteers of the long-term, residential program for women and their children recovering from abuse and addictions. When compared to similar organizations across the nation, Blue Monarch proudly boasts a program completion rate that is two to three times the national average.

In addition, it also celebrated the admission of its 100th woman. It is one of few programs in the state that

allows women to bring their children with them to recover together as a family. Since opening in 2003, Blue Monarch has served over 300 women and children.

It was recently announced that Howell and Madeline Adams, long-time friends of the organization, had offered to match the next note payment up to any amount. Friends and supporters responded immediately, which allowed Blue Monarch to reduce the property debt by \$130,000.

For more information visit <www.blumonarch.org> or call (931) 924-8900.



## Tea on the Mountain

OPEN WITH NEW HOURS  
For a leisurely luncheon  
or an elegant afternoon tea  
11:30 to 4 Thursday through Saturday  
OPEN FOR DINNER  
Friday and Saturday by reservation  
(931) 592-4832  
298 Colyar Street, US 41, Tracy City

## Don't Just Rush into Christmas

Enjoy all of what fall has to offer at Sinclair's: cute gifts, serveware and decor for autumn everyday, football season, Thanksgiving and Halloween.

## Sinclair's Emporium

Hwy 50, Decherd • 967-7040  
Open Tue-Sat 10-5  
Gift Wrapping • Free Delivery

## Scenic Mountain Properties



**NEW PRICE!**  
**MOSSY OAKS IN CLIFFTOPS.** Custom home of inspiring spaces. 3 BR, 2.5 BA, 50x27 deck, mountain stone fireplace. MLS #1126537. **\$499,500.**



**LAUREL LAKE LODGE.** 4 BR, 3 BA, 3960 sf. Basement media room, hot tub, wrap porches, decks. Panoramic view of Dripping Springs Cove. Stone fireplace, paved drive. MLS #1208081. **\$398,000.**



**FERN GARDEN IN CLIFFTOPS.** Delightful 2 BR, 2 BA log cabin. Screened and open porches, manicured grounds, fire pit. Metal roof, fabulous great room. Popular rental. MLS #1191053. **\$249,000.**



**DOGWOOD RETREAT IN CLIFFTOPS.** 5.2 acres natural woodlands surround this comfortable split plan with glass sunroom, rear deck. Vaulted great room, fireplace. 3 BR, 2 BA. 1968 sf. MLS#1213077. **\$319,000.**



**SEWANEE RANCH,** fenced with barns, sheds, on 15 acres. Much of the 3/2 brick residence has been updated for you. MLS#1178871. **\$253,000.**



**EAGLE NEST.** Brow-front on Ingman Cliff Road. Granite counters, wood floors, wood-burning fireplace. Many custom features. 3 BR, 2.5 BA. MLS #1085092. **\$370,000.**



**BRIAR PATCH IN CLIFFTOPS.** Superior quality custom crafted log home on 5 acres. Screened porch, 4-car detached carport. 3 BR, 2.5 BA. Appliances included. MLS #1201630. **\$329,900.**



**BROW RIM IN CLIFFTOPS.** 5.2 acres, MLS #1200343, **\$250,000.**  
**SUMMERFIELD POINT STREAM FRONTAGE.** 5.11 acres, MLS #1206392, **\$160,000.**



402 West Main St. • Monteagle • 931-924-3355  
Mon to Thu 11 to 9 • Fri and Sat 11 to 10  
Sun 11 to 9 • www.paparons.net

**Sunday thru Thursday  
4:00 to 9:00 p.m.**  
**\$4 APPETIZERS, WINE AND  
DRINK SPECIALS**  
**2 FOR 1 DRAFT BEER**  
**\$9 ENTREES**

**Celebrating 10 Years!  
2000-2010**  
**Sundays  
thru Thursdays:**

**\$5 Appetizers, Glasses of Wine and  
High Point Cosmopolitans, plus  
\$15 Entree Specials!**



**High Point**  
HISTORIC DINING ON THE SUMMIT  
BETWEEN CHICAGO & MIAMI  
224 East Main St  
Monteagle  
931-924-4600  
Sun to Thu 5 to 9  
Fri and Sat 5 to 10  
www.highpoint  
restaurant.net

**TO SEE QUALITY HOMES IN CLIFFTOPS,  
SEWANEE OR AROUND THE MOUNTAIN, CALL  
RAY OR JEANETTE.**

**Jeanette S. Banks, Broker 931.924.3103  
numa@blomand.net**  
**Ray Banks, Affiliate Broker 931.235.3365  
banksgrass@yahoo.com**  
**GOOCH-BEASLEY REALTORS**  
**www.gbrealtors.com 931.924.5555**

## Council Elects Hurst to Campus Master Plan Committee *continued from page 1*

Leaseholders' Association Issues Committee chair, asked how many elected community representatives serve on the master plan steering committee. Forster said no community representatives are on the committee, that University members of the committee are responsible for reaching out to the community to solicit input.

Council representative David Coe said that this is not the same as "having a voice in the room." Council representative Annie Armour noted that often the community does not learn about decisions until after they have been made and sometimes receive inaccurate word-of-mouth information.

McCardell asked the council: "How would you prefer to see this done?"

Council representative Chet Seigmund said he frequently hears the complaint, "The little man has no vote." Seigmund said that people are hesitant to voice their opinions for fear of jeopardizing their employment or a family member's employment with the University.

"I want to change that. How do we address that?" McCardell asked.

Council representative Pamela Byerly suggested that having a community representative who could report back to the Community Council would be useful because community members' filters for assessing information differ from those of individuals who represent the University.

Armour proposed a resolution that a member of the community serve on the campus master plan steering committee. McCardell supported the proposal, and discussion followed about how that person would be selected. The council voted to elect someone from their ranks to serve and discussed whether University employees, their spouses and former University employees should be precluded from the position, which would exclude all but three council members. On the recommendation of Haskell and McCardell, the council agreed not to adopt a non-University affiliation criterion. The council voted by secret ballot and selected council representative Mi-

chael Hurst to serve on the master plan steering committee. Hurst, a Louisville native, graduated from the University in 1988. He had a company that ran three Papa John's Pizza franchises for 15 years. Hurst and his family now live in Sewanee.

Continuing the discussion on issues raised by the Leaseholders' Association at the August council meeting, Forster acknowledged a need to review the 6 percent ground rent fee and frozen ground rent policies. Regarding estate planning, Forster proposed a policy change: if a nonemployee wishes to add a family member to an existing lease or to refinance the lease and if the term of the lease is not extended, the Lease Committee should consider allowing the ground rent to remain frozen through the remaining term of the lease.

Though Forster did not recommend changes to the lease transfer fee policy, he said he wanted to continue the dialogue with the Leaseholders' Association. Forster mentioned some of the other issues raised, particularly the need for ombudsmen to represent leaseholders in disputes and the role of leases in promoting diversity among leaseholders. Haskell thanked Forster for continuing the dialogue and for his recommendations on ground rent and estate planning.

In regard to management of municipal services, another item introduced by the Leaseholders' Association, Forster said the Sewanee Fire Department would report to the council in October, and the Police Department would report in November.

Forster introduced Dennis Jones, manager of Sewanee Emergency Medical Service (EMS), the volunteer first-response ambulance service serving the Sewanee community. Sewanee EMS is the only volunteer ambulance service in the state. Jones said that training classes were held in September and noted that most volunteers are students. More community volunteers are needed.

Jones also works for Grundy EMS. Through an agreement with the University, Grundy EMS leaves an ambu-

lance parked on campus as backup to be used when the Sewanee ambulance is on a call. Prior to the arrangement with Grundy EMS, the closest backup service ambulance was in Winchester, more than 10 miles away. The support service from Grundy EMS costs the University \$24,000 per year; the University's annual budget for Sewanee EMS is \$80,000.

The proposed location for a new Duck River Electric Membership Corporation office on Highway 41A at the Trimble Lane intersection was next on the agenda. Bill Elliott, Duck River's district manager, attended the meeting to answer questions about the prospective site and structure. (Elliott served for 22 years as the DREMC manager for the Sewanee area.) He said the Trimble Lane site was chosen after DREMC explored a number of other possible locations. A 6,500 sq. ft. building, to house offices and service space, will be built on the 2.4 acre site, along with a parking area for trucks and equipment behind the building. (Duck River's office on University Avenue is 1,400 sq. ft.) Following completion of the new facility, a crew will be assigned to it, affording Sewanee residents improved service and quicker repairs.

As the wooded Trimble Lane site is at the edge of a mixed residential and commercial use zone, rezoning to allow for commercial use would be necessary. The site entrance would be on Trimble Lane, and the exit would be on Highway 41A. Wooded buffers are planned between the highway and the pole storage area and between adjoining leases, with additional landscaping planned, although space considerations would preclude planting tall trees directly in front of the building. A rock wall would hide the trucks and equipment from view. Utility poles stored at the site would not be creosote treated, but would be treated with an EPA-approved pesticide to prevent decay. The outside lights would be high-pressure sodium fixtures, two in front and two in the rear, directed downward, with floodlights for supplemental lighting in use only when needed.

Asked about traffic concerns, Elliott said that the Franklin County Highway Department saw no problems, but the utility's location still needs state approval. Visibility for trucks entering the highway exceeds state standards, he noted. The site is located at the point where the speed limit on Highway 41A drops from 45 mph to 35 mph.

Haskell complimented the plan, but he observed that driving through Sewanee on Highway 41A has a "sylvan feel," and the proposed construction would change that, as well as setting a precedent that would make it difficult

to refuse other requests for commercial construction on Highway 41A. Council representative Coe and several visitors expressed similar reservations. The council's student representative, Robert Rosamond, suggested that a visual depiction of the plan might help clear up concerns.

Forster commented that the Lease Committee had looked at other Duck River buildings in the area and found them to be "aesthetically attractive." Elliott directed the council to visit the Columbia facility on Highway 50 to see a comparable project. Council representative Phil Loney asked to see photographs of other facilities.

Haskell asked whether the University had approved the project. Forster replied that the Lease Committee had studied the proposal and concluded that "the concept is worthy of further review." However, he said it is possible for the Lease Committee to rescind an opinion. The next step, Forster said, was for Duck River to receive approval for the rezoning change from the Franklin County Planning Commission. The Lease Committee will revisit the proposal in November.

McCardell said, "The council's views will be solicited in an advisory capacity before this project goes forward." Duck River representatives will attend the October Sewanee Community Council meeting and will bring concept drawings and photographs of other facilities.

Domain Manager Nate Wilson addressed the council regarding deer cull policy and practices. In response to the often-heard complaint, "We have too many deer," Wilson and Marvin Pate, University director of sustainability, met with representatives from the forestry, biology and psychology departments and with biologists from the Tennessee Wildlife Resources Agency to set goals and draw up a plan to control the deer population. In addition to the damage deer cause to gardens and the vehicle hazards they pose, Wilson noted that deer overpopulation causes loss of biodiversity. Preliminary estimates by the forestry department indicate that the Domain's deer population is well above the habitat's recommended level. Beginning this fall, a deer population study will be done twice a year, before and after each annual cull, with the natural resource management class collecting pre-cull data this year and the spring post-cull data to be collected by the ecology class. Also, deer browse data will be monitored on an annual basis by the forestry and biology departments. The 2010 goal is to increase the cull's harvest by 30 percent to approximately 100 deer. Wilson observed that it might take several years to get the deer population under control, after which harvests would likely be reduced to a much lower intensity. Because of the increased goal for the 2010 cull, Wilson said that allowing short-range ballistics such as shotguns and muzzle loaders is under consideration for the Christmas cull. Veteran hunters have

recommended this strategy.

Pate praised Wilson for the metrics and analysis he brought to the cull process. Sewanee began holding an annual Christmas-break deer cull 11 years ago, Pate said, and five years ago began holding a fall pre-cull. This year, zones 5 and 6 have been added to the pre-cull hunting area (see map on page 5). The pre-cull runs from Oct. 9 through Dec. 12, with hunting every morning from sunrise to 8:30 a.m. (except for Thanksgiving, a no-hunting day). On weekends and during fall break, hunting will take place in the morning and evening, with no hunting between 10 a.m. and 2 p.m. Hunting is by bow only from tree stands by police and approved guest hunters, who are interviewed before receiving clearance. The hunting zone map will be posted in duPont Library. The venison taken during the cull is distributed to Community Action Committee clients and to local individuals who are willing to pay for the processing.

Rosamond expressed concern with the hunting schedule, as some students camp on weekdays. Wilson said he would discuss the issue with John Benson, director of the Sewanee outing program. Rosamond asked if students could participate in the hunt. Pate said interested students should contact him.

Following up on concerns expressed at the August meeting about debris from the airport clear-cut, Coe said he and Wilson walked the site, and the "native growth looked promising." Coe was satisfied with the additional cutting that had been done to neaten up the area and noted that more cutting might be done in the spring.

Byerly brought to the council's attention the need for the Cowan entrance to the Domain to be cleaned up and maintained. Seigmund said he had contacted the F.C. Highway Commission, and they agreed to address the problem.

Council representative Phil White asked that the dog-park discussion be deferred to the October meeting.

Armour inquired whether council members had received the list-serve test e-mail from Vicki Sells. All council members replied in the affirmative. Provost Linda Lankewicz will advise Sells that the test was successful. Armour recommended that the proposed e-mail list serve be opened to the community.

The next meeting of the Sewanee Community Council is Monday, Oct. 25, at 7 p.m. in the Sewanee Senior Citizens' Center.

—Reported by Leslie Lytle

## Sewanee Woman's Club Birthday *from page 1...*

those years. The party will be the program (with a few surprises), so come and join the fun and celebrate our birthday.

The menu for this month will be chicken a la king and lemon jello with grated carrot and pineapple salad. Dessert will be a cake on each table provided by member Myrna Nesbit. This menu reflects luncheons that were served in the early years.

Reservations for the meeting are due by noon on Friday, Oct. 8, by calling Caroline Shoemaker, 598-0982 or Marietta Poteet, Monteagle (931) 924-7666 or e-mailing Marianna Handler at <mariannah@earthlink.net>. Child care is available during lunch. Please request it at the time of your reservation. If you have made a standing reservation for this year's programs, remember to cancel your reservation if you cannot attend.

Annual membership dues are \$5 and the cost of the lunches is \$13.

## Mountaintop Cottages

www.gbrealtors.com



**CLIFFTOPS KELLY'S KABIN.** Vaulted great room combines dining/kitchen. Mountain stone wood-burning fireplace. Covered porch. 2 BR, 1 BA. Stream, hot tub w/ acceptable offer. Great rental history. MLS# 1174742. **\$229,000.**

**HICKORY COVE COTTAGE IN CLIFFTOPS.** 5 acres, 3 BR, 1 BA. Main floor master, screened porch, open deck for entertaining and grilling. Mountain stone fireplace. Easy to rent. MLS# 1177319. **\$194,000.**



**TO SEE QUALITY HOMES IN CLIFFTOPS, SEWANEE OR AROUND THE MOUNTAIN, CALL RAY OR JEANETTE.**

**Jeanette S. Banks, Broker 931.924.3103 numa@blomand.net**

**Ray Banks, Affiliate Broker 931.235.3365 banksgrass@yahoo.com**

**GOOCH-BEASLEY REALTORS**

**www.gbrealtors.com 931.924.5555**

*Snowwhite*  
Laundry & Dry Cleaning Co.

**PICKUP & DELIVERY**

Every Wednesday at your home or office in the Sewanee-Monteagle area

**(931) 455-3473**

**FOR SALE BY OWNER**



426 WIGGINS CREEK DRIVE, SEWANEE - Gracious home with 3,500 sq. ft. on wooded lot with 4 bedrooms, 3.5 baths, bonus space, living room with fireplace, eat-in kitchen, dining room, screened porch, back deck, lots of storage, fenced backyard, early summer occupancy, \$495,000. Contact Joan or Sam Williamson, 931-598-5493.

## Founders' Day Honorary Degrees continued from page 1...

The week's formal events conclude with the dedication of Snowden Hall on Wednesday, Oct. 13, at noon. An extensive renovation and expansion of Snowden Hall was completed in time for the 2010-11 academic year. It has served as the home of the forestry and geology departments since 1962.

The Most Rev. John Tucker Mugabi Sentamu is the 97th Archbishop of York, Metropolitan of the province of York, Primate of England and a member of the House of Lords and the Privy Council of the United Kingdom. He is the United Kingdom's first black archbishop. His outspokenness and strong missionary zeal have earned him a reputation as a fearless leader capable of bringing new life to the Church of England. Sentamu was born into Uganda's Buffalo clan in 1949, the sixth of 13 children. He practiced law at the bar and the bench before fleeing Idi Amin's regime for the United Kingdom in 1974.

Sentamu earned a master's degree and a doctorate in theology at Selwyn College, Cambridge. He served a number of churches in the London area before being appointed Bishop of Stepney, Bishop of Birmingham and then Archbishop of York in 2005. As the Church of England's second most senior clergyman, Sentamu works closely with the Archbishop of Canterbury. He and his wife, Margaret, have

two adult children and two adult foster children. He will receive an honorary doctor of divinity degree.

Emory M. Thomas grew up in Richmond, Va., and attended the University of Virginia, intending to play football and become a coach. Instead, after receiving a bachelor of arts degree in history, he earned a doctorate at Rice University and found his calling—researching and teaching the history of the Civil War. He joined the University of Georgia faculty in 1967, and was named Regents Professor of History in 1987. He has contributed essays to many historical journals and is the author of eight books about the Civil War. "Robert E. Lee: A Biography" is regarded as his master work; the New York Review of Books called it "the best and most balanced of the Lee biographies."

Thomas received the Faculty Service Award in 1982 from the University of Georgia Alumni Association. He was honored with a book of essays, "Inside the Confederate Nation: Essays in Honor of Emory M. Thomas," produced after his 2002 retirement by 20 of his colleagues and former students. He was the Mark W. Clark Distinguished Visiting Professor of History at the Citadel in 2000 and



Emory M. Thomas

2003-04. Thomas and his wife, Fran, have two sons, Emory Thomas Jr. and the Rev. John Thomas, headmaster of St. Andrew's-Sewanee School. Thomas will receive an honorary doctor of letters degree.

Further details about the week's events are available at <www.sewanee.edu>.

## Fowler Center Closed

The events surrounding the University's Founders' Day will require the closure of some facilities in the Fowler Center. The indoor track at the Fowler Center will be closed from Oct. 5 through Oct. 14. In addition, the Fowler Center will close at 4 p.m. Monday and Tuesday, Oct. 11 and 12.

## Expanded Snowden Hall Dedication Oct. 13

The University will dedicate its newly renovated and expanded Snowden Hall at noon on Wednesday, Oct. 13, as part of a series of events celebrating the installation of John M. McCardell Jr. as the 16th vice-chancellor and president.

The week's formal events conclude with the Snowden dedication. Snowden Hall has served as the home of the forestry and geology departments since 1962, and an extensive renovation and expansion was completed in time for the 2010-11 academic year.

Expected to be the University's first LEED (Leadership in Energy and Environmental Design) Gold building, Snowden's green features include solar panels (the first large-scale installation on campus), re-use of the building's existing wood paneling, local wood and stone used for the addition, energy-efficient windows, recycled materials and Sewanee's first storm water management practices.

The addition more than doubled the building's size; new labs, classrooms, resource rooms, research space and faculty offices were part of the renovation. The update strengthens the base of technical support—classroom and lab work



and analysis—that Snowden provides for the research and teaching done in the field using the resources of the Domain.

The Snowden family has sustained Sewanee for generations. Snowden Hall was named in tribute to J. Bayard Snowden of Memphis, a Sewanee alumnus from the class of 1903, who established the University's forestry department when he endowed the Annie B. Snowden Chair of Forestry in memory of his mother in 1928. A gift from Bayard's son Robert G. Snowden, of the class of 1940, launched the effort to expand and enhance Snowden Hall.

## Work Party for Climate Change

The University's Sustain Sewanee and the GreenHouse residents invite the Sewanee community to join them for a community garden party and work day on Sunday, Oct. 10. Meet at noon in the Mary Sue Cushman Room of the Bairnwick Women's Center, where lunch will be served. Frank Hart, professor of physics, will give a

talk on the science of climate change. Following the talk, participants will walk to the student organic garden on Breakfield Road to do some work in the garden. The event is part of 10/10/10, a global work party organized by <350.org>. It will be one of more than 5,200 events taking place in 176 countries on Oct. 10.

**SAUSSY**  
CONSTRUCTION, L.L.C.

Fred Saussy, General Contractor

Residential - Remodeling - New Construction  
Licensed & Insured

496 Kennerly Rd • Sewanee, TN 37375 • (931) 598-5981  
fredsaussy@gmail.com • www.sausseyconstruction.com

**June Weber**  
**Gooch-Beasley Realtors**

Serving the Sewanee and Monteagle area  
with quality real estate service:  
-39 years of experience  
-Mother of Sewanee alumnus

**gb** www.gbrealtors.com junejweber@bellsouth.net  
June Weber, CRB, CRS, GRI Broker 931.636.2246  
GOOCH-BEASLEY REALTORS 931.924.5555

Open Monday-Friday 9-5; 598-9793  
Saturday 10-2 90 Reed's Lane, Sewanee

**WOODY'S**  
**BICYCLES**  
is on the Mountain  
in the red building behind Shenanigans  
**AND OFFERS RENTALS!**

Full-Service Bike Shop featuring New Bikes E-mail  
by Trek, Gary Fisher, Lemond woody@woodsbicycles.com  
All Necessary Accessories and Bicycle Repair www.woodsbicycles.com

## HEAVEN ON EARTH... NOW AVAILABLE IN SEWANEE



Lost Cove photography courtesy of Stephen Alvarez.

The Cumberland Plateau is the world's longest hardwood forested plateau. Widely considered one of the most biologically rich regions on earth. Rivaling the biodiversity of tropical rainforests. It is the home of Myers Point.

Seize your once in a lifetime opportunity! Many will call it a great investment. Others will call it the perfect community of like-minded neighbors. For all who desire to live surrounded by nature, history, beauty, quality and serenity, you'll want to call it home.

- 480-acre private gated community
- 24 exclusive home sites; lakeside living or bluff vista life
- Timeless, organic, craftsman architecture standards
- Land Trust of Tennessee perpetually protected forests
- Over four miles of walking and riding trails
- Community barn, pastures, resting benches, and fire pit
- Panoramic views of Champion Cove, Lost Cove and the Cumberland Plateau
- Minutes from The University of the South



For more information call John Currier Goodson  
at (931) 968-1127 or visit our website: [www.myerspoint.com](http://www.myerspoint.com)

## Astrophysicist Presents "Stars over Sewanee"

Distinguished astrophysicist Arnold Benz will give three presentations this month as part of the University's physics department's seminar series. All are welcome to attend.

Benz will speak about "Water in the Universe: First Results of the Herschel Space Observatory" on Wednesday, Oct. 20, at 7 p.m. in Woods Lab, room 216.

"Living in an Evolving Universe: From Star Formation to the Big Bang and Back to Us" will be presented on Wednesday, Oct. 27, at 7 p.m. in Blackman Auditorium.

The final lecture will be "Scientific Worldviews, Religion and the Quest for Meaning" on Friday, Oct. 29, in Gailor Auditorium at 1 p.m.

Benz is an internationally renowned astrophysicist who has long served as professor and research group leader at Switzerland's Federal Institute of Technology in Zurich. An expert in plasma astrophysics and radio astronomy, he has played significant roles in space research projects conducted by NASA and by the European Space Agency. A recent research project involves Benz's investigation of star, planetary and galactic formation in the early universe through the

apparatus of ESA's Herschel Space Observatory. Launched last year, Herschel is the largest telescope mirror ever sent into space.

Benz has gained distinction for reflections on the interplay between scientific inquiry and religious experience. He has written extensively on cosmological and spiritual themes. "The Future of the Universe: Chance, Chaos, God?" was translated from German into nine languages and has won praise from theologians Wolfhart Pannenberg and John Polkinghorne and Nobel Prize-winning scientist Werner Arber. Benz's latest science and religion book is being translated into English by Martin Knoll, professor of geology.

A past president of the Committee of European Solar Radio Astronomers, Benz has twice been designated principal scientific organizer for the Colloquium of the International Astronomical Union and has filled other leadership posts within the international scientific community.

Benz's three presentations are supported by the University Lectures Committee, the dean of the College, the department of physics and the School of Theology.

## American Legion Meeting Set

American Legion Post 51 holds its regular monthly meeting on the second Saturday of each month. The next meeting will be on Oct. 9, at 9 a.m. in the Legion Hall on University Avenue in Sewanee.

## Belvidere Firemen's Fish Fry Fund-Raiser

The Belvidere firemen will hold a fish fry featuring live bluegrass music and a great assortment of food on Saturday, Oct. 16, from 11 a.m. - 5 p.m.

The menu includes fish, barbecue chicken, chicken strips, hush puppies, fries, baked beans, cole slaw, and delicious homemade desserts, all you can eat, for \$11 (adults); \$5 (children 4-12); and children under four eat free. All seating is indoors.

Music will be performed by the bands Down the Road, Moving On, Tom Brantley & Missionary Ridge, Turkey Creek Ramblers, Just Thrown Together and The Creek.

The Belvidere Valley Lawn and Garden Pullers Association will be pulling in competition starting at noon, at the same location. To enter call Fred Benson at (931) 212-4446.

The Belvidere Fire Department is located at 401 Belvidere Rd. For information call Tim Yannayon at (931) 580-0708.

## Hiking Trail Named for Caldwell Opens Above Lost Cove

The Sewanee outing program has announced the opening of a new trail. The Caldwell Rim Trail is named in memory of Hugh Caldwell, beloved philosophy professor and legendary founder of the Sewanee ski and outing club.

This 2.4-mile loop atop the Plateau features scenic overlooks, bluff lines and a level of difficulty similar to that of the Piney Point and Beckwith's Point trails. The Caldwell Rim Trail begins by following Depot Branch, affording several views of the streambed and Point Disappointment. The trail crosses several creeks and follows the bluff line overlooking Lost Cove. The single-track then connects back to a fire lane, allowing hikers to walk two abreast and enjoy conversation for the remainder of the loop.

Many students, alumni and faculty joined with the SOP to create this trail, from the early stages of brainstorming and exploratory hikes, to flagging the proposed trail and creating the path and making signs. Now it is available for the community to enjoy.

In 2008 Sewanee acquired 3,000 acres in Lost Cove, just south of central campus, and placed the land under a perpetual conservation easement held by the Land Trust for Tennessee and managed by the University. The Lost Cove acquisition was intended to increase recreational opportunities and strengthen the University's study of forestry, geology, natural resources and the environment by vastly expanding the "outdoor laboratory" experience.

## CCJP "Seasonal Cookbook": Call for Recipes Continues

Recipes are still being accepted for the "Seasonable Cookbook" being compiled by the Sustainable Consumerism Committee of the Cumberland Center for Justice and Peace (CCJP). The cookbook will showcase foods available on the South Cumberland Plateau. One of the challenges of preparing meals from locally grown foods is seasonal availability, but for residents of the Plateau, local farmers and gardeners offer a great variety, and a delightful array of things grow in the wild.

The committee invites you to submit your recipes to be considered for inclusion in the "Seasonal Cookbook." A number of recipes have already been received, but most of them feature foods available in the late summer and fall. Particularly needed

are recipes featuring spring and early summer vegetables and fruits. This is when area gardens are most bountiful and area farmers' harvests are most abundant.

E-mail your recipes to Leslie Lytle at <slytle@blomand.net> (with "Recipes" in the subject line) or send them by postal mail to P.O. Box 307, Sewanee TN 37375. Use these same addresses to request a free copy of the brochure "Who Owns Your Future Health?" Please be advised that, because of their adverse health effects, recipes using processed foods containing trans fats and high fructose corn syrup will not be considered for inclusion in the "Seasonal Cookbook." The committee looks forward hungrily to reading your recipes. Thank you, and happy, healthy eating.

**Scratch & Patch**  
COLLISION CENTER

**24-HOUR TOWING NOW AVAILABLE!**  
620 David Crockett Hwy., Winchester

OWNER: Michael Penny Ph. 931-962-4556  
931-224-1857 Cell 931-224-1857  
WE ACCEPT MOST CREDIT CARDS! Fax 931-962-4536

**Troubled?**  
Call CONTACT LIFELINE  
of Franklin County  
967-7133  
Confidential Help

**Continental**

**ZOOM TO \$100**

BUY 4 CONTINENTAL TIRES AND RECEIVE A \$100 PRE-PAID AMERICAN EXPRESS CARD BY MAIL.

OFFER VALID OCTOBER 1<sup>ST</sup> - 31<sup>ST</sup>, 2010. ONLY AT TIRE PROS.

**Oil Change**  
**\$5<sup>00</sup> OFF** Up to 5 qts of oil and new filter  
Cannot be combined. See store for details. Expires 10/31/10

**University Student Special**  
**10% OFF** Any Service for University Students! Bring your ID  
Cannot be combined. See store for details. Expires 10/31/10

**HEATH AUTOMOTIVE TIRE PROS**

501 1<sup>st</sup> Ave. SW  
Winchester, TN  
**(931) 967-3880**

www.heathautomotivetirepros.com

MasterCard VISA DISCOVER NOVUS



## “Lunch and Learn” Features Keele on Oct. 14

The October speaker for the Academy for Lifelong Learning at St. Mary's Sewanee will be Robert Keele, University Alfred Walter Negley Professor of Political Science Emeritus. With midterm elections just around the corner, his topic, “An Historical Perspective on Midterm Elections,” is especially pertinent. His lecture will be held Thursday, Oct. 14, at noon.

Keele was on the faculty of the University for 42 years, and he specialized in American politics and constitutional law. He received his B.A. degree from Sewanee, and his M.A. and Ph.D. from Emory University. He was chair of the political science department and dean of the College of Arts and Sciences. In 2005, he was the recipient of the distinguished faculty award from the Associated Alumni of the University.

The “Lunch and Learn” monthly series provides opportunities for lifelong learning for local residents and visitors in a beautiful bluff setting at St. Mary's Sewanee. Lectures are held on the second Thursday of each month. Annual dues for the academy are \$10. New members are welcome at any time.

A boxed lunch may be purchased for \$10. Lunch reservations for the October program are due by Friday, October 8. E-mail <stmarys.sewanee@bellsouth.net> or call Vanessa or Hadley at 598-5342. Reservations are not required to attend the lecture, and participants may bring their own lunches. For information about the program, call Anne Davis (924-4465) or Elaine Goleski (924-3227).

## Community Council Seeks Nominees for Fall Elections

The Sewanee Community Council is accepting candidates for representatives to the council, reported Council representative Dennis Meeks at the Sept. 27 meeting.

Elections are held every two years on the first Tuesday in November. Council members are elected to serve a four-year term.

The purpose of the Community Council is to promote the general welfare of the Sewanee community and encourage cooperation in efforts that hold promise for civic development or improvement and to deliberate such issues as may give rise to concern and tension within the community. On matters of civic concern, the council may publicize its consensus or take such other action as it considers necessary. In matters that concern the municipal powers vested in the University of the South, the council shall act as an advisory body to the vice-chancellor.

Six council seats are open for the fall 2010 election: the District 1 seat of David Coe (Coe is up for re-election); the District 2 seats of Chet Seigmund (Seigmund is up for re-election) and

one vacant seat; for the District 3 seat of Chet Chellman, who resigned midterm, council representative Annie Armour will run since moving from District 4 to District 3; and the District 4 seats of Annie Armour (term expiring) and Dennis Meeks (Meeks is up for re-election).

Meeks is serving as election officer, and representative Michael Hurst is serving as deputy election officer.

Individuals interested in serving on the Community Council should submit a nominating petition signed by 10 registered voters who live in the Sewanee community. The deadline for submitting a nominating petition is Oct. 15. Petitions are available from Meeks (598-0159) and Hurst (598-0588), and signed petitions should be returned to them.

## Community Center Board to Meet

The Sewanee Community Center's Board of Directors will meet on Wednesday, Oct. 13, at 10 a.m. Everyone is welcome to attend.

## Local Food Discussion Tonight

A panel discussion on the Sewanee campus will address the question: “How, then, shall we eat?” The event will be held at 7 p.m. in Convocation Hall this evening, Oct. 7. Panelists will share their thoughts about the future of food in our region and explore how the University might connect to the regional food economy. The community is invited to attend.

Panelists for “The Regional Food Economy” are Jeff Pfitzer, director of the Gaining Ground initiative of the Benwood Foundation; Laura Willis, director of the Community Action Committee; Steve Ford, agricultural economist and farmer; and Bill Keener, C'83, Sequatchie Cove Farm.

The panel discussion is sponsored by the University's Living and Learning Communities, among others.

## August Emergency Services Reports

**EMS:** Sewanee Emergency Medical Service Director Dennis Jones reports the service had 12 runs in August.

**FIRE:** Sewanee Volunteer Fire Department Chief David Green reports the volunteers had 58 calls in the month—42 alarms and 16 dispatches.

**POLICE:** Chief Robert White reports the department patrolled 6,718 miles in August; investigated four vehicle accidents; ticketed nine for moving violations, 46 for nonmoving violations and issued 30 warnings. Officers investigated eight drug violations, 12 liquor law violations and nine theft reports. Fourteen motorists were assisted. Eight animals were picked up for Animal Control.

## Masons Slate Meeting Oct. 11

The Summit Masonic Lodge #497 F&AM, a member of the Sewanee community since 1878, will meet on Oct. 11, at 7:30 p.m. in the Lodge Hall. For more information call Brian Masters, (931) 924-3389, or Joe Milner Sr., 598-0711.

## King Appointed Director of Advanced Degrees Program

The Rev. Benjamin J. King, assistant professor of church history, has been appointed director of the School of Theology's Advanced Degrees Program (ADP).

King, a native of Brighton, England, holds two B.A.s from the University of Cambridge—one in history and one in theology, the latter while training for ordination at Westcott House. He received a master's in theology at Harvard Divinity School and a Ph.D. in theology at Durham University in the U.K. He was ordained a priest in the Church of England in 2000. Upon his relocation in the United States, he served in the Diocese of Massachusetts as a parish priest in Boston for five years and then as Episcopal chaplain at Harvard University for four years. He joined the School of Theology faculty in 2009.

The Advanced Degrees Program is designed to increase professional knowledge in the practice of ministry. The degrees include doctor of ministry, doctor of ministry in preaching, master of sacred theology and master of sacred theology in Anglican studies. Classes are held in the summer that build up the relationship between the practice of ministry and biblical, historical and theological studies by

combining learning in community with a cycle of daily prayer and worship in the Anglican tradition.

“I intend the Advanced Degrees Program to attract the attention of the national and international Church,” explained King. “Our instructors will come from both sides of the Atlantic and beyond, with reputations as leading scholars who can communicate their insights in socially and culturally sophisticated ways that will benefit the ministries of all who learn at Sewanee.”

## Sewanee Book Club Explores “The White Nile”

The next meeting of the Sewanee Book Club will be at 1:30 p.m. on Monday, Oct. 18, in the home of Jean Yeatman. “The White Nile” by Alan Moorehead will be reviewed by Chris Barret. This work recounts the harrowing adventures of the explorers who sought to discover and authenticate the source of the great Nile River. Visitors are always welcome.

For questions or directions contact Flournoy Rogers at (931) 598-0733 or <fsrogers@wildblue.net>.

### Winchester Podiatry

**CHARLES D. GANIME, DPM**

*Board Certified in Foot Surgery  
Diplomate, American Board of Podiatric Surgery  
New Patients of All Ages Welcome! We Treat Your Feet!  
Most Insurance Accepted, Including TennCare*

We are at 155 Hospital Road, Suite 1, in Winchester.  
[www.winchesterpodiatry.com](http://www.winchesterpodiatry.com)

**931-968-9191**

FINE DINING AT *The Edgeworth Inn*

## Cynthia's

ON CHESTNUT HILL

Enjoy eclectic cuisine prepared by Chef Cynthia Krueger at The Edgeworth Inn's restaurant in the historic Monteagle Assembly. **Every Friday & Saturday night!\***

**Fall offerings include:**  
Thai, Indian & French dishes  
4-Course Prix Fixe Menu ~ \$29.95  
You are invited to bring your own beer or wine.

*Reservations required*

\*Other nights by request for parties of 6 or more.

Located at The Edgeworth Inn • 19 Wilkins Ave. • Monteagle, TN • 931-924-4000  
chestnuthillcafe@mac.com • Full menu at [EdgeworthInn.com/Restaurant](http://EdgeworthInn.com/Restaurant)

# The Depot

## deli



Serving breakfast, lunch and dinner  
Monday–Friday 7 am to 8 pm,  
Saturday 8 am to 8 pm, closed Sunday.

Food made fresh while you wait.

Dine in or take out: 403 W. Main, Monteagle.

Ask about our \$7.99 daily specials.

In a rush? Call in your order and we'll have it  
ready for you when you come in!

# 931-924-2806



## CLAYTON ROGERS ARCHITECT

Sewanee, Tennessee  
931-598-9425  
[www.claytonrogersarchitect.com](http://www.claytonrogersarchitect.com)

## Sewanee Union Theatre

Cinema Guild Tonight  
Thursday, Oct. 7, at 7:30 p.m.

Fritz Lang's M  
110 minutes • Not Rated • Admission FREE

German-American director Fritz Lang presents his first "talkie"—and cinema's first serial killer—in this 1931 classic whose central villain was later used in Nazi propaganda films to illustrate the evils of sexual deviance. Propelled by a compulsion he can't control, plump pedophile Hans Beckert (Peter Lorre) escapes the eye of the law—but not the wrath of the Berlin underworld being blamed for his crimes. Otto Wernicke co-stars. ([www.netflix.com](http://www.netflix.com))

Sewanee Union Theatre This Week  
Friday–Sunday, Oct. 8–10, at 7:30 p.m.

The Twilight Saga: Eclipse  
124 minutes • PG-13 • Admission \$3

Danger stalks Seattle with a rash of mysterious killings that have Bella (Kristen Stewart) feeling less secure than ever in the third installment of this teen fantasy series based on the best-selling books by Stephenie Meyer. With a malevolent vampire continuing her quest for revenge from the sidelines, the human Bella must reconcile her love for Edward (Robert Pattinson), a vampire, and her growing feelings for Jacob (Taylor Lautner), a werewolf. ([www.netflix.com](http://www.netflix.com))

No Cinema Guild Thursday, Oct. 14,  
due to FALL BREAK!



Nell Breyer, two frames from "After Disappearance," 2010

### University Art Gallery Presents Breyer's "After Disappearance"

The University Art Gallery announces Nell Breyer's art exhibit, "After Disappearance," an exploration of human movement through live streaming and video installation. Breyer will present her work in an artist's talk on Friday, Oct. 8, at 4:30 p.m. in the University Art Gallery, followed by a reception. The exhibition will be on view Oct. 8–Nov. 21.

Breyer explores the experience, understanding and representation of movement. Beginning from the premise that the most essential element of movement is change, Breyer worked with software engineers to develop a video-processing program that captures and displays only those elements that change between frames.

Visitors to "After Disappearance" will experience an interactive environment that makes their own actions part of the artwork. Gestures and motion will be captured and projected, "creating a living, unfolding and ephemeral drawing." Breyer seeks to "reveal what is both vibrant and evasive about the moving body" and to make us more conscious of our own physical experience.

Breyer is an artist and research

affiliate at Massachusetts Institute of Technology's Center for Advanced Visual Studies and the MIT Program for Art, Culture and Technology. She received a bachelor's degree in art and humanities from Yale, a master of science degree in cognitive neuroscience from Oxford University and a master of science degree in media arts and sciences from MIT.

Her work has received wide national and international recognition, with choreographic works performed in locations from the Institute of Contemporary Art in Boston, to the Haymarket Theater in London, to the Bangladesh National Museum Auditorium. Her commissioned public art and video installation works have appeared in the Contemporary Art Museum, St. Louis, and the Museum of Contemporary Art in Rovereto and Trento, Italy.

The University Art Gallery is located on Georgia Avenue and is free, accessible and open to the public Tuesday through Friday, 10 a.m.–5 p.m., and Saturday and Sunday, noon–4 p.m. For more information call 598-1223 or visit [www.sewanee.edu/gallery](http://www.sewanee.edu/gallery).

### Monteagle Slates Civil War Reenactment

Come enjoy some fall fun in Monteagle at the Pavilion, Hannah Pickett Park and Monteagle green space behind the Monteagle Community Center. On Saturday, Oct. 9, beginning at 10 a.m., Civil War reenactments will be held during the day and evening. There will be an inflated slide, obstacle course and park for the children to enjoy. Gospel music will be featured in the Monteagle Pavilion from 12:30 to 6 p.m., followed by the band Unwound from 7 to 10 p.m.

All events and activities are free to the public, and attendees are encouraged to bring lawn chairs to enjoy the music.

Sponsors of the event include Mountain Valley Bank, Citizens Tri-County Bank and the Town of Monteagle. For information e-mail [monteagleinfo@blomand.net](mailto:monteagleinfo@blomand.net) or call Debbie at (931) 924-2265.

### Enjoy Contra Dance Oct. 22

The next Sewanee contra dance will be held on Friday, Oct. 22, at 7:30 p.m. in the Mary Sue Cushman Room of the Bairnwick Women's Center, located on 114 Mississippi Ave., Sewanee. The caller will be Jane Ewing with music provided by Robin Gottfried and his band. There is no charge, and everyone is welcome. For information contact Stephanie Loria at [loriasf0@sewanee.edu](mailto:loriasf0@sewanee.edu).

### Cannon County Arts Stages "The Blue Sky Boys"

The Arts Center of Cannon County will present "The Blue Sky Boys," a comedy about science and imagination, on Fridays and Saturdays, Oct. 8, 9, 15, 16, 22 and 23, at 7:30 p.m. and on Sundays, Oct. 10 and 17, at 2 p.m.

Proving that sometimes the best way to solve a problem is to dream it, President John F. Kennedy announced in May 1961 that the United States would put a man on the moon in the next 10 years. But he had neglected to tell anyone at NASA. A host of hilarious characters go on an incredible journey from a Virginia duck blind to Cape Canaveral to the moon.

Tickets are \$10 and may be purchased online at [www.artscenterofcc.com](http://www.artscenterofcc.com) or by calling (800) 235-9073. The Arts Center is located at 1424 John Bragg Hwy., west of Woodbury.

### Tims Ford State Park Heritage Day Celebration

At its Heritage Day Celebration on Saturday, Oct. 9, 1–5 p.m., Tims Ford State Park will celebrate the history of the Elk River Valley. The event will be held in the park's recreation building.

Learn more about the families and communities that lived along the Elk River, now part of the Tims Ford Reservoir. The park invites the families and friends of the Elk River communities and all who are interested to share stories and photographs and to remember the good old days. The afternoon will include

bluegrass, country and gospel music; musicians are encouraged to bring their own instruments to join in the music-making. For more information on the event call 962-1183.

Tims Ford State Park, located on the Tims Ford Reservoir at 570 Tims Ford Dr., Winchester, is an outstanding recreational area and fishing paradise. Long before the construction of Tims Ford Dam on the headwaters of the Elk River, the area was used extensively by American Indians as hunting and fishing territory. Archaeological excavations have uncovered numerous artifacts and occupational sites, indicating that humans occupied the area from 10,000 to 12,000 years ago. For more information about the park see [www.tnstateparks.com/TimsFord](http://www.tnstateparks.com/TimsFord).

## Fall into Fun at Granddaddy's Farm

Fall Family Fun

- Get Lost in the Corn Maze
- Take a Hayride to the Pumpkin Patch
- Holler at the Pig Races
- Out-Think the Logic Mazes
- And More!

Bring this ad to Granddaddy's Farm for \$1 OFF ADMISSION for one person. Expires Oct. 30, 2010. Saturday only. One coupon per person. Not good with another offer.



September 24–October 30  
Tuesday–Thursday 1:30 to 6 p.m.  
Friday 5 to 6 p.m.  
Saturday 9 a.m. to 10 p.m.

Fall Market Open  
Tuesday–Saturday  
Closed Sunday and Monday

1165 Highland Ridge Rd.  
Estill Springs, TN

Just 4 miles from Tims Ford  
State Park in beautiful  
Franklin County

(931) 327-4080  
GranddaddysFarm.com

The Lemon fair  
Sewanee  
598-5248  
Monday  
through  
Saturday  
11AM-5PM

Expect the Exceptional

Website:  
thelemon  
fair.com

HANDMADE  
POTTERY • GLASS  
FOLK ART • ANGELS  
JEWELRY • CHIMES



Exceptional Yarns,  
Exceptional Service

Noro, Zecca, Be Sweet, Rowan,  
Berroco, Araucania, Lantern  
Moon, Cascade, Crystal Palace,  
Artyarns, Nashua, Sirdar,  
Sublime, Skacel ...

Classes, Workshops, & Private  
Lessons Available Year Round

Hours: Monday 10–5  
Tuesday 8:30–8  
Wednesday–Closed  
Thursday 8:30–5  
Friday 10–5  
Saturday 10–3  
Sunday–Closed

Small Selection of Gifts

317 S. Jackson St.  
Tullahoma, TN 37388  
931-461-5648  
[www.tullahomayarn.com](http://www.tullahomayarn.com)

## AIR DUCT CLEANING

ABBEY ROAD CLEAN-AIRE  
MANCHESTER, TN • SINCE 1989

GET RID OF DUST, ALLERGY PROBLEMS

(931) 728-5600 • (931) 273-8899 cell

"We're Your Solution To Indoor Pollution"

RESIDENTIAL  
COMMERCIAL  
INDUSTRIAL

### TANKERSLEY'S HOME IMPROVEMENTS

- New Construction
- Existing Homes
- Barns/Outbuildings

### TANKERSLEY'S TREE SERVICE

- Stump or Tree Removal
- Topping • Trimming
- Cabling • Firewood
- Feeding • Lot Clearing

(931) 691-3617 or (931) 967-7631

Free Estimates—Insured • Roy Tankersley, Owner



Mae Wallace's pottery is featured this month in Shenanigans Gallery.

## Featured Artists in October at Shenanigans Gallery

Brilliant colors and the blending of exquisite craft and functional simplicity will be on display this month at Shenanigans Gallery. Artists Larry Carden and Mae Wallace will be featured.

Carden, a professor in the University's religion department, will exhibit woven scarves in a variety of colors and patterns. Wallace, a professor of education and anthropology, will show functional, brightly colored cups, mugs, bowls and plates, inspired by the colors of a Tennessee rainbow and the tropical flowers of Thailand, where she recently took a sabbatical.

With cooler weather and Sewanee fog on the way, this is a great time to come to Shenanigans and add a splash of color to your home and wardrobe.

Shenanigans Gallery is located in the back of Shenanigans Restaurant at 12595 Sollace M. Freeman Highway in Sewanee. The gallery is open every day from 11:30 a.m. to 9 p.m. For information visit the Shenanigans Art Gallery page on Facebook.

Other artists with work in the gallery include: Bob Askew, watercolor and oil paintings; Jill Carpenter, patchwork and quilting; Tom and Susan Church, woodworking; David B. Coe, photography; Ginger Freeman, mixed media; Diane Getty, fibers; Robley Hood, handmade books; Barbara

Hughes, ceramic sculpture and painting; Diane Jones, calligraphy; Sanford McGee, copper and mixed media; Dan Pate, painting and sculpture; Claire Reishman, pottery; Peggy Solomon, fiber art; Jeanie Stephenson, bronze; Christi Teasley, textiles; Merissa Tobler, pottery; and Laurel York, printmaking and basketry.

## Meet Executive Chef Wright Today

Come to the Community Engagement House on Thursday, Oct. 7, at 5 p.m. for free coffee, tea and snacks and the opportunity to get to know Rick Wright, Sewanee's new executive chef. Wright is looking to improve the nutrition and create a more environmentally friendly dining hall. This is a great way to welcome him into the Sewanee community and learn more about his plans for McClurg.

The Community Engagement House is the white house with a red roof located at the corner of Alabama and Mitchell avenues. For information e-mail Alexandria Higdon at <ahigdoal@sewanee.edu>.

[www.sewanee-messenger.com](http://www.sewanee-messenger.com)

## Frist Impressionism Exhibit Tickets Available Now

"The Birth of Impressionism: Masterpieces from the Musée d'Orsay" opens Oct. 15 at the Nashville Frist Center for the Visual Arts and will be on view through Jan. 23. "Chihuly at the Frist," now on display, runs through Jan. 2. Advance, timed tickets for "The Birth of Impressionism" are now on sale and include admission to "Chihuly at the Frist."

The Frist Center is one of only three venues worldwide to host this magnificent exhibition from Paris' Musée d'Orsay, dedicated to the art of the early modern period (1840s through the early 20th century). The exhibition comprises 100 works, including 17 to be shown only in Nashville. On view will be paintings by Courbet, Manet, Cézanne, Renoir, Bouguereau, Degas, Fantin-Latour and Whistler.

Tickets must be ordered for a specific day and time and are valid only for the reserved date and time. Orders may be made online at <www.fristcenter.org> (additional charges apply); through the advance ticket call center at (866) 683-4978; or in person at the Frist Center.

Ticket prices for visitors follow these guidelines: 18 and younger, free; Frist Center members, free; adults ages 19-64, \$15; seniors ages 65 and older, \$12; active duty military, \$12; college students with ID, \$12; groups of 10 or more with reservations, \$13 per person. On Thursday and Friday evenings, 5-9 p.m., college students with ID will be admitted for \$5.

The Frist Center is located at 919 Broadway, in downtown Nashville. See <www.fristcenter.org> for information.

## Oct. 9 Farm Tour Cancelled

The Cumberland Farmer's Market scheduled tour of McMinnville farms on Oct. 9, has been cancelled.

## View "Smile" Exhibition in University's Carlos Gallery

The University art department presents "Smile," a solo exhibition by Jessica Wohl, visiting assistant professor, from Friday, Oct. 8, through Sunday, Nov. 21, in the Carlos Gallery. Wohl will speak about her work on Friday, Nov. 12, at 4:30 p.m. in the Nabit Art Building, followed by a reception.

"Smile," an exhibition of drawings, paintings, photographs and collages exploring modern portraiture, takes its name from the word often associated with posing for a photograph. "Smile" investigates the ritualistic behavior of posing for, creating, commissioning and displaying portraits. Inspired by found and discarded photographs, each work alters the original found images to raise questions about reality, authenticity and the genuine.

Regarding her work, Wohl says, "There is a familiarity we seek and feel with conventional portraiture. I play with the predictability of these images by duplicating and manipulating that which is extremely familiar. These uncanny manifestations of the family speak to the

strangeness and discomfort that may lie behind the façades of those smiling faces inevitably frozen in time." Wohl comes to Sewanee from the University of Georgia in Athens, where she earned a master of fine arts degree in drawing and painting. A native of Minneapolis and graduate of the Kansas City Art Institute, her exhibitions include shows in New York, Miami, Atlanta, Kansas City and most recently in Trondheim, Norway, and Helsinki, Finland.

The Carlos Gallery is located in the Nabit Art Building at 105 Kennerly Rd., between Georgia Avenue and Kennerly Road. Gallery hours are 8 a.m.-5 p.m., Monday-Friday, and noon-5 p.m., Saturday and Sunday.



The Smiths, 2008, graphite on mylar, 30 x 44 inches.

**Top of the Rock to Ya!**

Located at Exit 135 off I-24 across from Monteagle Ballfield  
**CHECK US OUT ON THE WEB AT**  
[www.smokenbsbbq.com](http://www.smokenbsbbq.com)  
931-924-7383



**Smoken B's BBQ**  
931-924-7383  
Monteagle, TN 37356

b.true

---

**WELCOME, UNIVERSITY FAMILIES!**  
**New! Fall dresses, sweaters and accessories**  
Located next to the Piggly Wiggly in Monteagle  
Wed-Sat 10-6 • (931) 924-5647

**A-1 CHIMNEY SPECIALIST**  
**"For all your chimney needs"**

Dust Free • Chimneys Swept, Repaired, Relined & Restored • Complete Line of Chimney Caps • Waterproofing Video Scanning



**G. Robert Tubb II, CSIA** *Certified & Insured*  
**931-967-3595**

## Glimpse of Glory

- \* Cliff-tops gated community
- \* Stunning bluff view
- \* Newly renovated
- \* 4800+ sq. ft.
- \* 4 bedrooms
- \* 3-1/2 baths
- \* 2 decks
- \* Bonus room
- \* Study
- \* Family Room



\* 1323 Overlook Dr.  
\* MLS # 1186739  
\* \$699,000  
**For a private viewing, contact Margaret Donohue, 931-636-5599**  
**Sewanee Realty, 931-598-9200**



October 8 through October 14

**OLDHAM THEATER**  
Winchester • 967-2516  
Mon-Fri, 7 p.m. • Sat & Sun 2, 4 & 7 p.m.  
You Again (PG) • Easy A (PG-13)

**MONTANA DRIVE-IN**  
Estill Springs • 649-3454  
First feature begins at 7 p.m.; second feature follows Fri & Sat\*

I: Legend of the Guardians (PG) & Alpha and Omega (PG)  
II: Easy A (PG-13) & Takers (PG-13)  
III: Devil (PG-13) & Machete (R)

\*First features only, Sun-Thu; double features Fri & Sat

---

Go to the website or call theaters for more information.  
**www.montanadrivein.com**

## Franklin Co. Humane Society Winners Announced

The Franklin County Humane Society is pleased to announce Natalie Hill of Belvidere won the August drawing for a free spaying or neutering of a dog or cat and Vickie Dunn of Winchester won the September drawing. Local veterinary clinics perform the surgeries on pets of the drawing winners.

The Franklin County Humane Society holds a drawing for one free spay or neuter of a cat or dog at each regular monthly meeting. An entry form for the next drawing is printed in this paper. Everyone is urged to enter if they have a pet in need of spaying or neutering. When a pet wins the drawing, all of Franklin County wins.

Those interested in joining The Franklin County Humane Society may do so for an annual membership fee of \$12. New members and volunteers are welcomed.

For information about adopting a pet or The Humane Society's monthly meetings, call the Animal Harbor shelter at 962-4472 or visit their website at <www.animalharbor.com> or e-mail <petadoption@charter.net>. Animal Harbor is open to the public Tuesday-Thursday, noon- 5 p.m., Friday, noon-6 p.m. and Saturday, 10 a.m.-4 p.m.

## Riding to the Rescue: S Double A Ranch Brings Help to the Troubled

The S Double A Ranch, (SAA) founded by Sandy and Tim Spies in the Plainview area of Grundy County in October 2009, is a new resource for mountaintop communities offering hope and help to people suffering from various kinds of problems.

The ranch is a nonprofit organization licensed through the Tennessee Department of Mental Health and Developmental Disability. Its purpose as defined in its mission statement is "to provide recovery and recreational services to recovering families." SAA is a faith-based Christian organization, offering services on a sliding scale based on income level, including free services to those who qualify. The ranch provides a wide variety of services including but not limited to individual and family counseling, intense out-patient therapy for drug and alcohol abuse, recovery support, life skills workshops and a 24-hour crisis line.

One of the programs featured by SAA is equine therapy. SAA is one of less than 13 operating SpiritHorse International programs offered in the United States. Many benefits both psychological and physiological can result from people interacting with animals—lowered blood pressure and heart rate, increased beta-endorphin levels, decreased stress levels, reduced feelings of anger, tension and anxiety to name only a few. Equine

therapy can be beneficial for patients suffering from traumatic brain injury, attention-deficit/hyperactivity disorder and bipolar disorder, as well as young people with difficulties in social interaction.

Justin Caldwell, a staff member at SAA, says of his own experience there, "When I began therapy with Sandy, I was suffering from panic attacks that had caused me to drop out of college and basically give up on my future." After therapy, he says he has overcome many of his problems and is returning to school in the spring.

Another program, Prime for Life, offers drug and alcohol treatment for people of all ages. People seeking help can come to SAA on their own or through referral from practitioners or agencies.

SAA is currently scheduling appointments for assessments. The ranch is also seeking churches, youth groups and organizations with whom to partner, as well as volunteers, donations and prayers.

For more information call (931) 592-5483 or visit <www.sdoublea ranch.org>.

## Celebrate Sewanee Fog with a T-shirt

Sewanee "Fog Happens" T-shirts are on sale in the University's Outreach office located in the Bishop's Common. T-shirts are dark grey, long-sleeved, sizes S-XXL and are \$16.00 (cash or check only). All profits go to the Sewanee Outreach Program.

## Jump-Off Bike Lane Petition

A petition to show area residents' support for the creation of a bike lane or a wide shoulder on Highway 156 is being circulated. Copies of the petition are available at Woody's Bike Shop and the bulletin board at the Sewanee Community Center.

For information contact Joan Thomas at 598-0535 or <jkthomas@usit.net>.

## September Lease Committee Report

The University's Superintendent of Leases Barbara Schlichting provided the following summary of the Sept. 22 Lease Committee Meeting.

The meeting was called to order and the following items were approved: the August minutes; the committee will consider changes to the tree policy; with regard to the new Duck River Electric building, the committee re-affirmed its approval of the Sollace Freeman/Trimble Lane site.

The following agenda items were approved: the request to transfer Lease No. 796 (Gessell), located at 187 Carruthers Rd., to Mark W. Lawrence, Sheri J. Lawrence and Meredith J. Lawrence; the request to transfer Lease No. 801 (Thoni), located at 296 Sherwood Rd., to Josh and Courtney Gibson and to replace the existing fence; the request to transfer Lease No. 735 (Lincks), located at 62 Abbott Martin Lane, to Mary Elizabeth Taylor;

The request to extend the lease and add a shed to Lease No. 858, located at 102 Curlicue Rd., provided leaseholder gets approval from Duck River, the county and any other interested parties; the request to replace windows, install vinyl siding, remove carport, repair porches and cut tree limbs on Lease No. 824, located at 240 Maple St., contingent upon domain manager's approval to cut tree limbs; the request to change the exterior paint color on Lease No. 710, located at 41 Fairbanks Circle; the request for changes to the house and site plan for Lot #48 in Wiggins Creek II, contingent upon the domain manager's final approval of the site plan;

The request to add a portico and trellis to Lease No. 493, located at 68 Mikell Lane; the request to add an awning-type roof over the back door on Lease No. 1023, located at 145 Parson's Green Circle; the request to increase the size of the deck on Lease No. 601, located at 288 Willie Six Rd.; the request to sublease the original Blue Chair building for use as a Ce Ce's Yogurt Shop; the request to change the paint color from gray with white trim and black shutters

to khaki with green trim and green shutters on Lease No. 502, located at 190 Clara's Point Rd.; and the request to modify the the addition on Lease No. 492, located at 257 Florida Ave.

The University recommends that leaseholders hire contractors who comply with the State of Tennessee's laws for licensing and insurance. It is the leaseholder's responsibility to confirm that a contractor meets the State of Tennessee's requirements. The University assumes no responsibility or liability for the work performed on leasehold property.

Contact information for the Tennessee Board of Licensing Contractors is: Tenn. Board for Licensing Contractors, 500 James Robertson Parkway, Nashville, TN 37243-1150; call (615) 741-8307 or (800) 544-7693; fax (615) 532-2868. You may also visit <tennessee.gov/commerce/boards/contractors/index.shtml> or e-mail Tenn. Board of Licensing Contractors Home, <Telise.Roberts@tn.gov> or <tennessee.gov/sos/rules/0680/0680.htm>.

Leaseholds offered for sale since the last meeting: Lease No. 729 (Dean), located at 104 Old Farm Rd., \$498,500.

A county building permit is required for structures with roofs. Please contact the Franklin County Planning and Zoning Office at 967-0981 for information.

The University must consent to Deeds of Trust that secure mortgages against leasehold property. If you are interested in obtaining a loan against your leasehold, it is important to get the lease office involved early on in the process. Failure to do so can result in a delay in the loan process. Loans also include equity loans, lines of credit, and refinances.

Policies and other leasehold information are available online at <www.sewanee.edu/leases> or by calling the lease office at 598-1998.

The next meeting is scheduled for Oct. 20.

## Tims Ford Council Slates Community Fire Protection Address

The Tims Ford Council quarterly meeting is scheduled for Monday, Oct. 18, at 6 p.m. in the Regions Bank Campora Room in Winchester. The meeting is free and open to the public.

A team from the Tennessee Division of Forestry will give a presentation. Jim Dale, assistant district forester for the Cumberland Forestry District will address three topics: 1) "An Introduction to the Wildland Urban Interface"; 2) "The Firewise Community—What Does It Look Like?" and 3) "Steps to Becoming a Nationally Recognized Firewise Community."

Leon Konz, Firewise coordinator from the Knoxville District, addresses "Community Wildfire Protection Plans—What Are They and How Do We Get One?" followed by Jeffrey Piatt, Forestry Program specialist from the Nashville District, speaking on "What Assistance is Available to Communities Setting Up a Firewise Program."

Tims Ford Council is a nonprofit organization interested in the preservation of the Tims Ford Reservoir and man's impact on the ecology of the lake. More than 200 families are members and are kept up-to-date with quarterly newsletters and a website found at <www.timsfordcouncil.org>. Annual dues are only \$10 per family.

### ENTRY FORM

I am a resident of Franklin County, and I hereby enter the drawing for one free spaying or neutering for one dog or one cat. (Only one entry per address per month.)

NAME: \_\_\_\_\_ PHONE: \_\_\_\_\_

ADDRESS: \_\_\_\_\_

Please mail to: The Franklin County Humane Society  
P. O. Box 187  
Winchester, TN 37398

Drawings are held at the regular FCHS monthly meetings. Winners do not have to be present, and they will be notified. Contributions are welcome with entry but not required and do not influence the outcome of the drawing.



October 8th – October 12th

10:00 am – 6:00pm  
Every Day

# Sewanee Founders' Day Weekend Sale

# 20%-50% Off All Regular Priced Items



903 W Main St. Monteagle TN, 37356 (931)924-4100 www.themountainoutfitters.com



University GreenHouse resident Rowan Jones of Sewanee shows off a bunny at the Open House on Oct. 2. Photo by Lyn Hutchinson

## School of the Good Shepherd 5K Run/Walk 4 Education

The School of the Good Shepherd will hold a "5K Run/Walk 4 Education" on Saturday, Oct. 9, beginning at 9 a.m. Runners will start from the Good Shepherd Pavilion, located on the church campus at 2037 Decherd Blvd., Decherd.

The registration fee is \$20. Families can participate for a group registration price of \$30. To register call Linda Clemens at (931) 962-9865 or visit <www.active.com>.

Medals will be awarded in five categories with an overall winner of the 5K run. All proceeds from the event will support the School of the Good Shepherd.

## Vandalism Incident on Campus

On Sunday, Sept. 26, the Sewanee Police Department and the Franklin County Sheriff's Office jointly responded an incidence of vandalism to vehicles in the Cravens Hall parking lot on Kentucky Avenue. Between 3:30-8:30 p.m. approximately 20 vehicles that were parked were damaged.

There has been an arrest in the case, and an ongoing investigation into this matter may lead to further charges.

**One-Stop Transportation Information: dial 511**

## Sewanee Herbarium Events Announced

On Saturday, Oct. 23, beginning at 10 a.m., meet in the parking lot behind the gym at St. Andrew's-Sewanee School to explore the "Trails at St. Andrew's-Sewanee School." Herbarium walk leader Yolande Gottfried will have selected the most interesting parts of the trail system for the time of year. This will be a moderate two-hour walk.

On Sunday, Nov. 7, at 1:30 p.m., meet at the Sewanee Market to hike the new Caldwell Rim Trail along the rim of Lost Cove. This trail, named for Hugh Caldwell, philosophy professor and founder of the Sewanee Outing Club, was established over the summer by Sewanee Outing Program Director John Benson and summer interns. The trail is located largely along the rim of Lost Cove with glimpses into the University's newly-acquired property. The trail leader for this easy two-mile hike is Mary Priestley

For information call the Sewanee Herbarium at 598-3346 or visit <lal.sewanee.edu/herbarium/>.



Virginia Cunningham,  
Affiliate Broker  
45 Living Oak Lane  
Winchester, TN 37398  
(931) 967-6007 (Office)  
(931) 967-6001 (Fax)



For Sale in Monteagle  
314 N. Central Ave  
\$124,900  
Nice corner lot. Across from  
The Assembly, east gate.  
Beautiful stone fireplace.  
Call (931) 841-5037 for showing appt.



**CAMPBELL CONSTRUCTION**  
Owner: Tommy C. Campbell  
Call (931) 592-2687

**DRIVEWAY WORK • GRAVEL HAULING  
• DOZER & BACKHOE**

plus Concrete Work • Water Lines • Clear Lots • Garage Slabs  
• Sidewalks • Porches & Decks • Topsoil & Fill Dirt • Roofing  
• Additions to House • Septic Tanks & Field Lines

**LET US SPRAY.**

*Deer-proofing spray service to save your favorite plants!*  
Janet Graham, (931) 598-0822 or www.glorybeservices.com





**MICHELLE M. BENJAMIN, JD**  
Attorney & Counselor at Law

102 FIRST AVENUE, NORTH  
WINCHESTER, TENNESSEE 37398

(931) 962-0006  
(931) 598-9767



**Sernicola's**

*Steaks, seafood, pastas, brick oven  
pizza, hot lunch buffet, plus a  
22-item fresh and healthy salad bar.  
Homemade desserts!*

106 Tennessee Avenue • Cowan • 962-3380  
Open Tuesday-Saturday • Lunch 11-2 • Dinner 5-8:30

## GOOCH-BEASLEY REALTORS

9 College St. at Assembly Ave., Monteagle • (931) 924-5555  
Peter R. Beasley II, Broker-Owner

[www.gbrealtors.com](http://www.gbrealtors.com)



**Owner Financing**

**WHERE MOTHER NATURE IS THE DEVELOPER!** Gorgeous log home, 2 barns, on 11.71 acres. Walk to lake. Owner finance/lease option. MLS #1187216. **\$249,000.**



**MATURE HARDWOODS ON SNAKE POND ROAD, SEWANEE.** 49.9 acres mature hardwood forest on beautiful rolling terrain with stream. Estimated 500 ft. road frontage. MLS #1140784. **\$199,600.**



[www.bridalveilbluffs.com](http://www.bridalveilbluffs.com)

**WATERFALL VIEWS,** 5 acres, **\$260,000.**  
**PRIVATE LAKE LOT, \$118,500.**  
**PRIVATE LAKE LOT, \$98,500.**  
**PRIVATE LAKE LOT, \$69,900.**  
**WOODED, \$36,500.**  
**WOODED, \$59,900.**



**CUSTOM TOUCHES, QUALITY CONSTRUCTION** in this Battle Creek log home on Ridge Cliff cul-de-sac. View of neighboring small private lake from rear windows and deck enhance its charm. 2 BR, 2 BA, 1372 sf. MLS #1174578. **\$219,000.**



**STUNNING VIEW BLUFF RIM.** 5.6 acres in Cumberlands at Sewanee. Minutes from University, restaurants, shopping, I-24. MLS #1153997. **\$75,000.**



**BIG CREEK LAKE FRONTAGE.** Cabin, pavilion, separate residence, barns, garage, tack room on 8.73 acres. MLS #1122181. **\$350,000.**



**NEW PRICE!**

**FOGGY MOUNTAIN COTTAGE BEHIND ASSEMBLY.** Private 2 acres with brow frontage. Rustic but well-built 1336 sf with covered porch. 4 BR, 2 BA. Perfect hideaway for mountain weekends. MLS #1141560. **\$199,000.**



**HIDEAWAY HEIGHTS** on the bluff rim in Monteagle. Owner says it is 6 acres of unparalleled view, seclusion and beauty. 952 Sunset Rock Rd. behind the Assembly. Historic log cabin with modern addition. MLS #1220967. **\$350,000.**



**WELCOMING BARNA LOG HOME IN CLIFFTOPS** with all the extras! Porches, decks, a great kitchen, and the master suite is on the first floor! A must to see ... MLS #1150324. **\$425,000.**



**PANORAMIC VIEW BLUFF VISTAS** from \$89,700, lots are 5+/- acres. New prices for a new economy. MLS #1193023.

**LAND & COMMERCIAL**  
Scenic View Tracts

- Dripping Springs
- Jackson Point
- Deerwood Dr.
- Bridal Veil
- Raven's Den
- Mills Hill
- Savage Bluffs

**NEW PRICE!**

**GORGEOUS ROLLING HILLS.** 204+/- acre nursery completely stocked with 70 varieties of ornamental trees and shrubs. Stock worth more than asking price. Plus a 35-acre stocked lake. MLS #1133380. **\$400,000.**

**HIGHLAND CHALETS** with stunning views of Pelham valley. 5+ acre lots, modern with granite counters, walls of windows. MLS #1183440, **\$389,000.** MLS #1183431, **\$399,000.** MLS #1183432, **\$399,500.**

Jeanette S. Banks, Broker, (931) 235-8235, numa@blomand.net  
June Weber, CRB, CRS, GRI Broker, (931) 636-2246, junejweber@bellsouth.net  
Ray Banks, Affiliate Broker, (931) 235-3365, banksgrass@yahoo.com  
Urla Wolkonowski, Affiliate Broker, (931) 636-2022, chrisurla@blomand.net

**www.gbrealtors.com**

# School Scoop



Sewanee Elementary School students paid tribute to global peace by holding their annual Peace Pole ceremony on Friday, Oct. 1. Under sunny autumn skies, a Nepali language plaque was added to the Peace Pole, accompanied by a musical tribute to world peace. This annual ceremony for peace was initiated by the Cumberland Center for Justice and Peace in 2002.

## SAS Players to Present Hamlet Oct. 15-17

St. Andrew's-Sewanee School's SAS Players will present William Shakespeare's "Hamlet" on Oct. 15 and 16 at 7 p.m. in McCrory Hall for the Performing Arts, with a final performance on Sunday, Oct. 17 at 4 p.m. Admission is \$5 for children and \$7 for adults. Tickets will be sold at the door. There is open seating.

"Hamlet" is an essential part of the SAS curriculum. English teacher Susan Core's long-standing senior assignment of "Hamlet" and the much anticipated research papers produced by each senior are a rite of passage on the path to receiving an SAS diploma.



During Fantastic Friday at South Middle School, Jared Pearson discussed the hospitality and food industry with students (L-R, facing camera) first row: Tiara Stovall, Abbie King and Emily Huffer; second row: Teri Robertson, Ashley Alford and Erica Vanzant.

## IN SEWANEE

**GRAND VIEW ON THE BROW.** Salt water pool, stables, fenced corral, shed, 8.38 acres. 6 BR, 5.5 BA, 6242 sf. Stone fireplace. Custom features, porches and decks all around. Full guest suite. Commanding panorama of Roark's Cove. MLS #1208151. **\$985,000.**



**85 TEMPLETON WAY.** Serene and peaceful home centered in St. Mary's campus. 3 BR, 2 BA. Circa 2004. Lovely kitchen, screened porch, fireplace, vaulted great room. MLS #1220899. **\$310,000.**

**CHERRYWOOD COTTAGE.** 207 Wiggins Creek Dr. Custom design, quality craftsmanship, Greek-revival style is nestled among the hemlocks and native hardwoods near Lake Cheston. Circa 2004. 3 BR, 2.5 BA. Perfect for entertaining with formal and casual areas. MLS #1170000. **\$349,000.**



**WILDWOOD COTTAGE** behind SAS in an exclusive, natural woodlands area. 4 BR, 2 BA. Full-length covered porches. New carpet, kitchen counters, range and dishwasher. Desirable rental cottage. MLS#1158792. **\$269,000.**

**CAMPUS CONVENIENCE.** 776 Georgia Avenue. New carpet, great rear deck. Walk or bike to University activities. Add gas logs to the fireplace for those brisk autumn evenings! Circa 1946. 4 BR, 2 BA, 1563 sf. Enjoy the Sewanee lifestyle. MLS #1208341. **\$185,000.**



**STONE COTTAGE CIRCA 1900.** 412 Lake O'Donnell Rd. The stone cottage you've been dreaming of! 1.6 acres with cleared garden space, set back from street. New carpet, wood floors. 4 BR, 2 BA. Metal roof, stone patio, covered porch. MLS #1208360. **\$175,000.**

## SES Templeton Award

This six weeks, Sewanee Elementary School students discussed the character trait "courtesy." Selected by their classmates as most exemplifying this trait were: pre-kindergarten, Amelia Hane; kindergarten, Aubrey Payne, Caleb Palmertree and Sophie Roberts; first grade, Trey Cash and Elijah Seavey; second grade, Meredith Foster and Lauren Ostrowski; third grade, Sam Cochran and Pete Haight; fourth grade, Jack Morris and Reagan Rhoton; fifth grade, Carolyn Bruce and Ryan Toomey.

**The Gnarled Oak**  
Fine handmade country furniture,  
refinishing, caning,  
seat weaving, and restoration

**Cherry Pie Safe**

Flat Branch Community  
2222 Flat Branch Spur  
Tracy City, Tennessee 37387  
(931) 592-9680  
Bill Childers, Prop.

Tell them you saw it HERE!

ROB MATLOCK  
CONSTRUCTION COMPANY  
NEW HOME BUILDING  
AND REMODELING

MEMBER, U.S. GREEN BUILDING COUNCIL

PHONE 931-598-5728

# MATLOCK

State Licensed • Fully Insured

## SEWANEE AUTO REPAIR

—COMPLETE AUTO & TRUCK REPAIR—

- Tune-ups
- Tires (any brand)
- Tire repair
- Batteries
- Computer diagnostics
- Brakes
- Shocks & struts
- Steering & suspension
- Belts & hoses
- Stereo systems installed

All Makes & Models • Service Calls • Quality Parts  
ASE Master Certified Auto Technician • 25 Years Experience  
7 to 5 M-F • (931) 598-5743 • Across from Regions Bank

## Fantastic Friday at South Middle

South Middle School in Cowan celebrated Fantastic Friday on Sept. 24. Special guests included: Kevin Syler—Air Force security; Chris Guess and Mike Bell—CSI; Therapy Works—physical therapy; Jerry Little and Russell Barnett—car industry; Eric Vanzant—career planning; National Guard—careers in the military; and

Jared Pearson—hospitality and the food industry.

Activity sessions included crocheting with Rachel Brown, working with clay with Tiffany Watson, Irish step dance with Denise Miller, self-defense with Josh Hammer, healthy relationships and personal safety with Haven of Hope, recycling relay with Carol Fulmer, ceramics with Wendy Jeans, cooking with Becky Greer, board games with Peggy Hegwood, and human checkerboard with Julie Watkins and Holly Eslick. Students had a fun and interesting time.

The next Fantastic Friday at South Middle School will be Nov. 19.

## SES Honor Rolls Announced

Sewanee Elementary School students were honored during assembly for their accomplishments in the most recent six-week period. Principal Mike Maxon announced that the following students earned First and Second Honor Rolls.

First Honor Roll: third grade, Cate Bachman, Chloe Fontenelle, Evan Fox, Saje Mangru, Gabriel Pongdee, Tessa Shackelford and Aidan Smith; fourth grade, Kate Butler, Rachel Hammer, Sophia Hartman and Larson Heitzenrater; fifth grade, Andrew Bachman, Brennan Baugh, Carolyn Bruce, Blake Collins, Lily Jenkins, Genevieve Rogers and Kellen Vogelfanger.

Second Honor Roll: third grade, Lucy Carroll, Sam Cochran, Harrison Hartman, Katie Finn Hurst, Daniel McDonough, Bryce Moser and Laura Katherine Whitsett; fourth grade, John Beavers, Zoey Craft, Chloe Frith, Megan Griffith, Jack Morris, Sidu Nambiar, Madeleine Wiedemann and Maggie Vaughn; fifth grade, Rachel Alvarez, Aubrey Black, Callie Cantrell, Thomas Goldsmith, John Grammer, Emile Lavoie-Ingram, Amelia Martinez-White, Sam Omohundro, Carly Grace Pate, Laurel Wall and Lyndsey Wall.

## SES ABBA-BABBA Club

Mike Maxon, principal of Sewanee Elementary School, announced the following students made all As and Bs in this six-week period, earning ABBA BABBA Club honors: third grade, Christina Jolly, Damon Marshall, Aden Rung, Thomas Stapleton and Zoe Wallace; fourth grade, Lucy Lancaster, Rivers Jenkins, Tommy McCullough, Mariel Rinck, Blake Rittenberry, Emily True and Kelley Williams; fifth grade, Blake Drinen, Alesha Gray, Sam Green, Isaiah Ortiz and Ryan Toomey.

## SES Citizenship Award

Selected by their teachers, the following Sewanee Elementary School students received the Citizenship Award this six weeks: pre-kindergarten, Emma Smith; kindergarten, Mary Mason Jenkins, Keeran Long and Brianna Winton; first grade, Makayla Cash and Kylie Coker; second grade, Calem Knight and Collin Stewart; third grade, Jacob Gravitt and Haley Hoosier; fourth grade, Jeffrey Powers and James Wallace; fifth grade, Aubrey Black and Alesha Gray.

## Walmart Funds CES Classroom Supplies

Walmart is helping 10 teachers at Cowan Elementary School purchase much-needed classroom supplies. Walmart and Sam's Club locations are awarding more than 45,000 educators with \$100 each, infusing \$4.5 million to schools across America.

Cowan Elementary School teachers and students appreciate the generosity of the store. The \$100 for each of the 10 teachers will be put to good use in the classrooms.

TO SEE QUALITY HOMES IN CLIFFTOPS, SEWANEE OR AROUND THE MOUNTAIN, CALL RAY OR JEANETTE.

Jeanette S. Banks, Broker 931.924.3103  
numa@blomand.net  
Ray Banks, Affiliate Broker 931.235.3365  
banksgrass@yahoo.com  
GOOCH-BEASLEY REALTORS  
www.gbrealtors.com 931.924.5555



### SAS Fort Chair in Writing Recipient

Tracy Randolph, St. Andrew's-Sewanee School humanities teacher, was named the 2010-11 recipient of the Fort Chair in Writing in recognition of her dedication to improving the writing skills of her students. The Fort Chair is awarded to an outstanding member of the faculty who recognizes the critical need for lucid and effective communication and is dedicated to improving the writing skills of all students.

Randolph started teaching Middle School humanities at SAS in 2000. She furthered her professional development by attending summer conferences and internships, including Nancy Atwell's Center for Teaching and Learning in Maine, Independent School Management in Delaware and the Omega Institute in New York. Randolph received a B.S. from Middle Tennessee State University and an M.Ed. from Peabody College. She is a coordinator for the Big Brother/Big Sister program and the school's radio station, WMTN 102.5 FM.

The Fort Chair in Writing was established by the SAS Board of Trustees in 1995 in appreciation for the significant support of past grandparent Dudley Clark Fort Sr., and in honor of his daughter-in-law Priscilla Carter Fort, a past parent and former trustee of SAS.

Past recipients of the Fort Chair are Susan Core, Phil White, Mark Brunton and Tom Gladstone.

### Girl Scout Meetings Begin Wednesday

Sewanee Girl Scout Troop 2107 meets every two weeks on Wednesday from 3:45 to 5 p.m. in the parish hall of Otey parish hall (across the street from Sewanee Elementary School). The membership cost is \$12, and dues are \$25.

Meetings are scheduled for the following dates: Oct. 13 and 27, Nov. 10, Dec. 1 and 15, Jan. 12 and 26, Feb. 9 and 23, March 9 and 30, April 13 and 27, and May 11 and 25. For information call Angela Fowler, (931) 636-0289.

### What's Cooking at SES?

Monday-Friday, Oct. 11-15

#### LUNCH

**MON:** Barbecue sandwich, slaw, baked beans; or grilled cheese or yogurt sack.

**TUE:** Breakfast for lunch: sausage, egg patty, biscuit, potato wedges, fruit cup; or grilled cheese sack or tuna tray.

**WED:** Pizza sticks, marinara sauce, fruit cup; or baked potato tray or grilled cheese sack.

**THU:** Spaghetti, tossed salad, corn on cob, whole wheat breadstick; or grilled cheese sack.

**FRI:** Turkey/cheese sandwich, trimmings, vegetarian beans, fruit cup, pudding cup; or grilled cheese sack.

#### BREAKFAST

**MON:** Oatmeal, buttered toast, fruit or juice.

**TUE:** Blueberry muffin, cereal, buttered toast, fruit or juice.

**WED:** Ham biscuit, cereal, fruit or juice.

**THU:** Egg/cheese biscuit, cereal, fruit or juice.

**FRI:** Assorted cereal, buttered toast, fruit or juice.

*Milk or juice served with all meals. Menu subject to change.*

# Sports Scoreboard



Sewanee's Purple Haze rugby club beat Chattanooga men's rugby club 7-5 on Saturday. Photo by Lyn Hutchinson

### Sewanee Field Hockey Defeats Hendrix College

The Sewanee field hockey team picked up its second conference win of the year on Oct. 2, downing Hendrix College, 4-2. The following day the Tigers fell to Rhodes College 3-0. Sewanee falls to 3-6 overall and 1-3 in the SCAC.

Sewanee will be back in action this weekend when they travel to Greencastle, Ind., for an SCAC clash with DePauw University on Oct. 9.

Against Hendrix, senior Caroline Carlin led the Tiger effort, picking up two goals on six shots in the contest. Sewanee came out strong in the first half and dominated the Hendrix Warriors throughout the match. The Tigers took 13 shots in the first half alone, as Carlin scored both of her goals early on.

The Tigers scored a third time in the first half when Taylor Skeen scored off a pass from Mary Kate McAlister to put Sewanee up 3-0. In the second half Sewanee continued to dominate the Warriors, taking 10 shots in the period. Molly Kennedy became the third Tiger to reach the scoring column after putting an unassisted goal past the Warriors' keeper.

Sewanee held the advantage in shots, 24-22, while Hendrix held the edge in corners, 14-7. Anna Morrow stopped seven shots for the Tigers, while Detmer picked up nine saves in the second half. Havens tallied eight shots on the day. The Tigers move to 3-5 on the season and 1-2 in the SCAC. They will host Rhodes College on Sunday, Oct. 10, at noon for their senior day celebration.

### U-12 Boys' Soccer Team Defeats Kimball

Sewanee's U-12 boys soccer team completed another successful weekend by defeating Kimball 7-0 on Saturday, Oct. 2. Blaise Zeitler, Sam Smith, Sam Thomas, Elliott Duncan and A.J. Mullin led the scoring for Sewanee. Smith and Zachary Taylor contributed to the shutout while in goal, and Joseph McDonough, Draven Tate, Dan McNair, Andrew Bachman and Kellen Vogelfanger played ag-

gressively at midfield and on defense. Sewanee is now 3-1 and will play the first in a series of road games in Kimball on Saturday, Oct. 9.

Your neighborhood café where wisdom is spoken, laughter runs rampant, and great food is had...

Fresh baked goods, daily homemade soups and specials, breakfast all day, salads, sandwiches, wraps, and all sorts of really great smoothies, shakes, and espresso drinks

**The blue chair Bakery & Café**  
41 University Avenue, Sewanee (931) 598-5434  
www.thebluechair.com



**Need More Room?** We Sell Boxes!

**Mountain Storage**  
(931) 598-5682

■ Security Gate Dan & Arlene Barry ■ Security & Camera  
Hwy 41 - Between Sewanee & Monteagle

For Your Antiques and Prized Possessions

**Climate Control**  
Temperature and Humidity Regulated



**Russell L. Leonard**  
ATTORNEY AT LAW

Office: (931) 962-0447  
Fax: (931) 962-1816  
315 North High Street  
Winchester, TN 37398  
Toll-Free (877) 962-0435  
rleonard@netcomsouth.com

**LONG'S LAWN SERVICE**

- landscaping & lawn care
- leaf removal • mulch

Local references available.  
Jayson Long

**(931) 924-LAWN (5296)**



"SAS brought me much closer to fulfilling my dreams."  
Selina Miller '10  
Brigham Young University '14

ADMISSION SNEAK PREVIEW SUNDAY, OCTOBER 24, 2-4:30 PM



St. Andrew's-Sewanee School  
inspiring curiosity

www.sasweb.org 931.598.5651



Seniors Chris Hogue and John Gilmer in Friday's cross country meet. Photo by Lyn Hutchinson

## Martin and Gilmer Pace Tiger Runners

Personal best times by John Gilmer and Cara Martin highlighted Sewanee's efforts in the Tiger Twilight Invitational at the Sewanee Golf Club on Oct. 1.

Martin completed the 6k women's course in 23:45, good for second place behind Mary Elaine Williamson, a Sewanee cross country camp alum from Birmingham Southern. Freshman Willow Smith was sixth overall, coming across the line in 23:55. Se-

wanee finished third in the women's team championship.

In the men's 8k race, Gilmer crossed the finish line in third place with a time of 27:20. Chris Hague finished a very close fourth behind Gilmer at 27:24. Clay Bond completed the course in 27:44 for sixth place. Will Mohr finished in 10th place with a time of 28:18. For men's team honors Sewanee finished a close second, only two points behind the University of West Georgia.

## University of Dallas Joins SCAC

The SCAC announced that the University of Dallas will be joining the Southern Collegiate Athletic Conference as the new 12th member, effective with the 2011-12 academic year.

Dallas, which sponsors 14 of 21 SCAC sports, is currently a Division III independent and has been since leaving the American Southwest Conference after the 2000-01 academic year.

Dallas sponsors 14 intercollegiate varsity programs, including baseball, men's and women's basketball, men's and women's cross country, men's golf, men's and women's lacrosse, men's and women's soccer, softball, men's and women's outdoor track & field and volleyball.

DePauw University, a member of the SCAC since 1998, announced in June that it would leave the conference following the completion of the 2010-11 academic year to pursue an offer of membership in the North Coast Athletic Conference.

For information visit <www.scacsports.com/news/dallas\_joins\_scac>.



Sewanee's women's soccer beat University of Dallas on Sunday. Bess Goodman (#16) scores the first of four goals that she had in the 7-0 game. Photo by Lyn Hutchinson

## Women's Soccer Stomps Dallas 7-0

On Oct. 3, Sewanee sophomore Bess Goodman knocked in four goals for the Tigers, as Sewanee defeated the University of Dallas 7-0 in a nonconference contest at home. The Tigers only led 1-0 after the first half, but they exploded for six goals in the second half to run away with the win. Sewanee came up with their largest offensive output of the season to move to 5-5 on the season.

On Saturday's match against Austin College, the Tigers held on until the final minute, but were outlasted 1-0 by the Kangaroos.

Sewanee returns to action this Saturday, when they host Oglethorpe in an SCAC contest at 12:30 p.m.

## Sewanee Football Loses to Centre

On Oct. 2, the Centre Colonels converted a Sewanee snap into a safety on the first play of the game and kept their momentum to down the Tigers 64-13.

By early in the second half, Centre was ahead 37-0. A 17-yard completion by freshman quarterback Lee Schurlknight to sophomore Jase Brooks moved the ball down the field. After Sewanee tallied five first downs on the drive, freshman quarterback Curtis Johnson rushed 22 yards for the Tigers' first touchdown of the day.

In the third quarter, senior John Ugorji caught Schurlknight's 37-yard pass for a Tiger drive that covered 62 yards in three minutes, while Schurlknight sneaked into the end zone for a one-yard touchdown. Trey Knighton's extra point made it 44-13.

Junior Zeke Wilson led the Tiger rushing attack with 73 yards, followed by Johnson's 22. Schurlknight finished the day 11 of 20, passing for 135 yards and one interception. Freshman Chad Morehead led the Tiger receiving corps, hauling in 59 receiving yards. Defensively, Andrew Walters paced the Tigers with 11 tackles and one forced fumble. Junior Alfonza Knight tallied nine tackles and one forced fumble. Zac Atkins contributed seven tackles and recovered a fumble.

Sewanee travels to Sherman, Texas, to play Austin College on Oct. 9.

www.sewaneerealestate.com



**NEW CAMPUS LISTING:** Elegant refurbished Sewanee home with 4 BR, 4-1/2 BA, separate rental apartment, great living areas and gorgeous grounds. **\$449,000.** MLS #1177837



**CHARMING COUNTRY HOME** on 27.21 acres surrounded by exquisite English gardens. 4 BR, 4 BA home with 6-stall stable, paddocks and pasture. Two adjoining tracts also available. **\$575,000.** MLS #1193694



**BEAR DEN LOTS:** Three lots in Monteagle bluff subdivision. Lots 5, 6 and 7 on Bear Drive. City water, electricity and paved road frontage. Lot 7 has spring and bluff frontage above Dripping Springs Cove. All three for **\$30,000.** Better hurry! MLS #1202803



**SEWANEE:** 237 Lake O'Donnell Rd. Established business location. Perfect for your retail or professional needs. **\$154,500.**

**RESIDENTIAL LAND AVAILABLE**  
**Snake Pond Road/Dogwood Lane** frontage. 49.9 acres at \$3300 per acre. \$164,670.  
**Ravens Den**—6.2 wooded acres. City water available. \$83,500.  
**Taylor Road**—29.73-acre tract with 3 streams, county road & electricity, backing onto the state forest. Excellent building sites convenient to infrastructure. \$249,000.  
**Lightning Bug Subdivision**—only 2 lots left! 1.2 acre, \$23,900; 1.1 acre, \$27,900 (has septic and well)  
**Jump-Off Mountain Road**—13.83 partially cleared acres. \$124,500.

**Deerwood at Jackson Point**—2 adjoining bluff lots. 4.37 and 4.11 acres. \$115,000 each.  
**6.4 Acres Bluff Land** on Partin Farm Road—\$115,000.

**COMMERCIAL**  
**Sewanee**—141 University Ave. office bldg.—\$250,000.  
**Sewanee**—Incredible retail/office bldg. on 41A—\$160,000.



**BEAUTIFULLY RENOVATED** Craftsman home with attractive in-law apartment (single level) Private in-ground heated pool, terrace and hot tub nestled between. Beautiful molding and detail, ceiling fans in all rooms, plus 9-foot ceilings. Crafts shop and music studio. **\$290,000.** MLS #1192442



**PARTIALLY REMODELED** 1512 sq. ft., 3 BR, 2 BA home on 4.65 acres. Large living area with fireplace separates bedrooms. Sold "as is." **\$55,000.** MLS #1216198



**NEW PARENTS:** A great investment opportunity. 2 BR, 1 BA, beautifully landscaped yard one block from downtown Sewanee. 12721 Sollace Freeman Hwy. **\$115,000.** MLS #1152174



**SEWANEE BRICK RANCH:** 2 BR, 1.5 BA, newly updated with office space. On Sewanee Domain, nice walk to St. Mary's Retreat Center. Sherwood Rd. **\$115,000.** MLS #1109122



**17.7-ACRE MINI-FARM:** Bluff property with cottage, mountain stream, large garden, pole barn, city water and well, pond and beautiful woods and view. **\$150,000.** MLS #1173992

www.sewaneerealestate.com

www.sewaneerealestate.com



**SPEED BARANCO,**  
 OWNER/BROKER  
**931-598-9244**  
 REM@EDGE.NET

**SALLY THOMAS,**  
 AFFILIATE BROKER  
**931-636-4993**

SALTHOMAS@BELLSOUTH.NET

**SHIRLEY TATE,**  
 BROKER  
**931-598-0044**  
 SJ.TATE@LIVE.COM

www.sewaneerealestate.com

## HOME GAMES

**Today, Oct. 7**  
 4 pm SAS JV Volleyball v Grundy Co. High  
 5 pm SAS V Girls' Soccer v Middle TN Christian School  
 5 pm SAS V Volleyball v Grundy Co. High  
**Friday, Oct. 8**  
 4 pm SAS V Football v Zion Christian Academy  
**Saturday, Oct. 9**  
 All day Sewanee Equestrian Home Show  
 12:30 pm Women's Soccer v Oglethorpe Univ.  
 3 pm Men's Soccer v Oglethorpe Univ.  
**Sunday, Oct. 10**  
 All day Sewanee Equestrian Home Show  
**Tuesday, Oct. 12**  
 4 pm FCHS JV Girls' Soccer v Signal Mountain  
 4:30 pm SAS V Girls' Soccer v Webb School  
 6 pm FCHSV Girls' Soccer v Signal Mountain  
**Wednesday, Oct. 13**  
 7 pm Men's Soccer v Maryville College  
**Thursday, Oct. 14**  
 6:30 pm FCHS 9th-gr Football v Tullahoma High



## Men's Soccer Battles to a Double Overtime Tie with Austin

On Oct. 2, the men's soccer teams of Sewanee and Austin College battled through 110 minutes of intense physical play before finishing in a 2-2 tie after two overtime periods. The following day Colorado College won 1-0 over the Sewanee Tigers. Sewanee dropped to 2-6-2 on the season and 0-2-2 in SCAC play.

Against Austin College, despite playing most of the second half and both overtime periods down one man, the Tigers persevered and managed to hold on for the tie. In an ultra-physical match that resulted in a combined 30 fouls and eight yellow cards, the Tiger defense stepped up when it counted most, and Sewanee was able to walk away with a tie for the second time in three conference matches. Austin held the advantage in shots, 22-18, on the night. Derek Williams collected nine saves for the Tigers, while Grant Gosselin grabbed eight for the Kangaroos. Both teams earned six corner kicks and Sewanee led in fouls, 17-13.

On Oct. 3, two second-half goals gave Colorado College the win over the Sewanee men's soccer team. The home Tigers ended the contest with 13 shots, while Colorado recorded 15. Williams came up with five saves in 90 minutes of action.

## Sewanee Topped in SCAC Volleyball

The Sewanee Tigers fell to Birmingham Southern, 3-0, and Oglethorpe, 3-0, on Oct. 2 in SCAC volleyball play. And on Oct. 3, the Tigers were topped by Hendrix and Millsaps in SCAC Cross Divisional play; both matches were decided by 3-0 scores.

On Oct. 2, in the first match of the day, Birmingham Southern bested the Tigers 3-0 (25-8, 25-9, 25-13). Liz Boddiford paced the Tigers with seven kills and a block. Erin Brahm led the way with seven assists, while Lydia Day had four digs. Tarver Shimek picked up three aces.

Shimek had four kills as the Tigers dropped their second match of the day to Oglethorpe by the score of 3-0 (25-13, 25-15, 25-12). Brahm chipped in 11 assists. Kim Conkell and Brahm picked up one block, and Callie Sims contributed four digs. Brahm, Shimek and Adrienne Borchardt each had one ace.

On Oct. 3, in the first match, Hendrix defeated Sewanee by set scores of 25-16, 26-24 and 25-19. Conkell led Sewanee with seven kills and one block, while Brahm had 19 assists. Boddiford paced the Tigers with 15 digs and four aces.

The Tigers closed out the weekend with a straight set loss to Millsaps by scores of 25-9, 25-21 and 25-20. Boddiford led the way with 13 kills. Brahm had 19 assists, and Borchardt chipped in 12 digs. Boddiford and Brahm each had one block; Sims, Shimek and Conkell had one ace apiece.

The Tigers host Oakwood College today, Oct. 7, at 6 p.m. in Juhon Gymnasium.



SAS coach Margot Burns offers her soccer team some halftime pointers.

## SAS Recognized for Good Sportsmanship

St. Andrew's-Sewanee School was recently named to the Tennessee Secondary Schools Athletic Association (TSSAA) Roll of Honor for member schools having no player ejections for unsportsmanlike conduct, no coach ejections and no major unsportsmanlike incidents reported

## SAS Drops Tullahoma Match

The St. Andrew's-Sewanee School volleyball team got off to a quick start Wednesday night, Sept. 21, taking the first set from Tullahoma High School, 25-23. However, they dropped the next three sets: 21-25, 17-25 and 20-25. Emily Thomas and Sam Stine did a nice job of running the offense, while Jenna Burriss and Hannah Wimberley had strong games at the net. Wimberley and Christiana True led the team in scoring. Catelyn Hutcherson added 10 digs and Madison Culpepper had 11 digs.

## SAS Varsity Girls' Soccer Racks Up Two Victories

The St. Andrew's-Sewanee girls' soccer team defeated Huntland High School, 6-1, on Sept. 28 and on Sept. 30 overcame district rival Davidson Academy, 2-1.

At home against Huntland, Allyson Ridley put SAS on the board in the 15th minute of the match from an assist by Nikki Johnston. Senior forward Allison Post scored a goal off another assist from Johnston. SAS continued to dominate play during the second half. Ridley scored two more goals, and Sadie Shackelford and Helen Wilson each converted a goal. Alex Berner-Coe earned one assist, and Johnston made four assists on the day. The defense, including goalkeeper Katie Craighill and backs Marianne Sanders, Hannah Horton and Eliza McNair, held firm.

Two days later the Mountain Lions went on the road and defeated Davidson Academy. Much of SAS's attack came from outside backs Horton and Sanders. With five minutes remaining in the half, Shackelford found the back of the net. In the 75th minute junior Johnston scored the game-winning goal off a double assist from Wilson and Horton. "We moved well off the ball, strung multiple passes together and attacked as a team," said Coach Margot Burns.

SAS moves to 5-6-1 on the season. The team will be at home for the final two regular season matches. On Thursday, Oct. 7, at 5 p.m., the Mountain Lions take on Middle Tennessee Christian, and on Tuesday, Oct. 12, they will host Webb School at 4:30 p.m. Following the final match, the senior players will be recognized for their contributions to the program.

during 2009-10. Grundy County and Tullahoma high schools also made the list.

SAS Athletic Director Ellis Mayfield is proud to be included among these schools. "Respect is at the heart of good sportsmanship," said Mayfield. "At SAS, we coach our athletes with respect, and then teach respect for our opponents, for the officials and for the game itself."

## Monday Night Tennis

The first session of Monday Night Tennis for the academic year, sponsored by the Sewanee Tennis Association, ended on Oct. 4, in the Charlotte Guerry Indoor Tennis Courts.

For six weeks members have been battling it out in mixed doubles competition accumulating points. The overall men's and women's top scorers for this session were Bob Chaney and Connie Arrick. The association works to provide opportunities for members to enjoy tennis throughout the year. Monday Night Tennis will resume on Oct. 25 with six more weeks of competition before taking a break before the winter session.

To become an association member contact Laurence Alvarez, 598-0109 or <lalvarez@sewanee.edu>.

## Overtime with Coach Shack

By John Shackelford

If you came out to watch one of Sewanee's many athletic contests played over this past weekend, you likely witnessed the team running onto the field or onto the court with their coaches in preparation to play. What you didn't see was the PPS crew that groomed and lined the fields, and the equipment room staff of Art Hanson and Brian Ochletree that washed and prepared uniforms and equipment for our 24 teams. Then they figure out how to set up for the 12 events played on the Mountain this past weekend. Office Manager Jane Hawkins, whose "office" extends well beyond her six-by-six desk area onto every field and stadium in Sewanee, must compress her 80-hour work week into a 40-hour time clock. Sports Information Director Kelsea Wissing tirelessly writes up the results of each contest and then gets them out through Tiger Sports and onto the website late into the evening.

All of this work is closely watched by a man born before the dinosaurs and who is cheaper than day-old bread. Business and Facility Manager Bill Barry ensures that each event will have the least expensive toilet paper available and that every team will be housed in a hotel with a price that even William Shatner's "The Negotiator" couldn't touch.

Head Trainer Ray Knight and his assistants, Matt McGraw and Laci Lincoln, tape ankles, ice elbows, wrap injuries hours before each contest begins and hours after they have blown the last whistle. With more than 400 athletes competing, that is more rolls of tape and band-aids than Bill Barry has had birthdays.

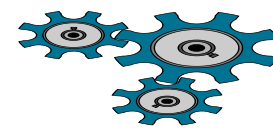
Our admissions office rightly sells the idea of the Sewanee community experience to prospective students. I would imagine that for many parents and students their first thought is of the unique nature of our professors' homes dotted throughout our beautiful campus. Having the teacher and the students all live and work closely together weaves an incredible fabric that enhances the learning relationship. What isn't so apparent on that first visit and that first look is the so many people who make things happen before they arrive and after they leave. It is that insulating layer just beyond the games, classrooms and labs that turns our weave into a functional community that operates with championship teamwork.

I know that as our athletes leave this Mountain to become doctors, lawyers, leaders, writers and perhaps professors, they will take with them the ability to write, communicate, analyze and decipher from their experience in the classroom. If they are to be successful, however, they will also take with them the work ethic, teamwork and sense of community they have witnessed in preparation for their events. They will know that to win you must arrive early and stay late until the job is done. And quite possibly, they will need to know how to save some budget money by purchasing the cheapest toilet paper on the market.

## J & J GARAGE

### COMPLETE AUTO REPAIR

- Import & Domestic
- Computerized 4-Wheel Alignments
- Shocks & Struts ● Tune-ups
- Brakes
- Our Work is Guaranteed.
- OVER 26 YEARS EXPERIENCE.



Jerry Nunley  
Owner

598-5470 Hwy 41-A between Sewanee & Monteagle ● Monday-Friday 7:30-5:30

## Sewanee's Founders' Day Headquarters

### SPECIAL SAVINGS ON YOUR FAVORITES!!!

Jim Beam 4-Year-Old - 750 ml plastic - \$14.99

Pinnacle Vodka - 1.75 liter plastic - \$18.99

Night Harvest Wine - 750 ml - \$3.99

José Cuervo Gold - 1 liter - \$19.99

Bacardi Piña Colada & Strawberry Ready-to-Drink - 1.75 liter - \$19.99

Burnett's Vodka - 750 ml plastic - \$7.99

## Pour Boy's LIQUOR STORE

504 Cumberland St. W in Cowan (located between Cowan Laundromat and Poor Boy's Discount Tobacco & Beer)  
967-1451 • Open Mon-Thu 10-9; Fri-Sat 10-10



## Nature Notes

### Yellow-Shafted Flickers are Plentiful

This month, **Jean and Harry Yeatman** have noticed more than the usual number of Yellow-shafted Flickers hopping on the ground to eat the numerous ants. Flickers have a curved bill, which is more like a pickaxe than a hammer. It inserts this bill into an ant nest and with its



long, sticky tongue, it pulls out hundreds of tasty ants. When it has young in its tree nest hole it regurgitates partly digested ants into the mouths of its young birds. This is easier than feeding them one ant at a time. Both male and female Flickers have a gray head cap with a red patch. The bib is black and the olive back and light underparts are covered with round black spots. A conspicuous white rump patch is visible when the flicker flies. The underside of the wings is golden yellow. This gives these birds the name Yellow Hammer. The male (on left in illustration) has a black

cheek patch or moustache that the female lacks. All baby Flickers have this black crescent, so the male "thinks" they are all males and drives them away when they leave the nest hole. Then the young females lose this patch and are accepted by the father. The nest is usually excavated in a semi-soft dead tree, but flickers will also accept a large-holed nest box. One female Flicker laid her eggs in the sandy beach at Fisher's Island, N.Y., because no good trees were available. Freddy Tucker had a Yellow Hammer gouge a nest hole in a telephone pole in their yard. Five to nine white eggs are laid. This Flicker is the second largest woodpecker in Tennessee beside the huge Pileated Woodpecker. The voice of the Flicker is "wicky-wick-wick-wick" or "cuh-cuh-cuh" or "kee-yeer" or "yar-up," etc.

### Manta Ray Attack

Jump-Off residents **Clara Stephens** and **Kati Harms** were vacationing at Pass-a-Grille Beach, Florida, when Clara was attacked by a Manta ray. After trying various home remedies, she was taken to the emergency room and given a tetanus shot, antibiotics and a pain-numbing medication. Both are safely home on the Mountain, according to **Steve Harms**.



## F.C. Humane Society Pets of the Week Meet Duncan & Fiona

The Franklin County Humane Society's Animal Harbor offers these two delightful pets for adoption.

Duncan is a young purebred Golden Retriever with the sweet nature typical of Golden Retrievers. He loves to play fetch, especially with children. Duncan is house trained, up to date on shots and neutered.

Fiona is a beautiful white cat who is as sweet as she is pretty. She is very, very affectionate and would really like

a lap to snuggle in. Fiona is negative for FeLV and FIV, house-trained, up to date on shots and spayed.

Call Animal Harbor at 962-4472 for information and check out their other pets at <www.animalharbor.com>.

Please help the Humane Society continue to save abandoned pets by sending your donations to the Franklin County Humane Society, P.O. Box 187, Winchester, TN 37398.

## South Cumberland State Park Events

### Friday, Oct. 8

**GREETER FALLS HIKE**—Join Ashlie at Greeter Falls parking lot at 9 a.m. to enjoy a moderate two-mile hike to beautiful Greeter Falls. Bring sturdy shoes and water.

**EXOTIC INVASIVES**—Meet at Stone Door ranger station at 2 p.m. to learn about the dangers to the park from exotic invasive plants. See hands-on demonstrations of how to remove them.

**SAVAGE FALLS SUNSET HIKE**—Meet seasonal ranger Aaron at Savage Gulf ranger station at 5:30 p.m. for a moderate four-mile hike to beautiful Savage Falls. Experience the transition from day to night in the park. Bring water/snack, bug repellent, and wear sturdy shoes. Bring a head lamp or flashlight.

### Saturday, Oct. 9

**SCAVENGER HUNT**—Meet at Stone Door ranger station at 9 a.m. to test your detective skills by tracking down objects in the woods. All materials will be provided; children must be accompanied by an adult.

**SOAP MAKING**—Meet at Stone Door ranger station at 2 p.m. to learn about primitive soap-making techniques and see a demonstration using simple household materials.

**SAVAGE DAY LOOP HIKE**—Meet seasonal ranger Aaron at Savage Gulf ranger station at 2 p.m. for a moderate five-mile hike on the Savage Day Loop. See Savage Falls and beautiful Rattlesnake Point overlook. Bring water, a snack, and wear sturdy shoes.

### Sunday, Oct. 10

**PAINT THE PET ROCK**—Come

## Weather

DAY	DATE	HI	LO
Mon	Sep 27	61	49
Tue	Sep 28	62	59
Wed	Sep 29	65	50
Thu	Sep 30	72	54
Fri	Oct 01	74	53
Sat	Oct 02	72	51
Sun	Oct 03	74	53

**Week's Stats:**  
 Avg max temp = 66  
 Avg min temp = 53  
 Avg temp = 58  
 Precipitation = 1.49"

**September Monthly Averages:**  
 Avg max temp = 81  
 Avg min temp = 62  
 Avg temp = 69  
 Total Precipitation = 2.51"

**September 52-Yr Averages:**  
 Avg max temp = 78  
 Avg min temp = 59  
 Avg temp = 68  
 Precipitation = 5.00"

**YTD Rainfall = 46.19"**  
**YTD Avg Rainfall = 40.70"**  
*Reported by Nicole Nunley  
 Forestry Technician*

to Stone Door ranger station at 9 a.m. to create your own pet rock. All materials will be provided; just bring your creativity!

**DRAWING NATURE**—For all ages. Meet the ranger at the Stone Door ranger station at 2 p.m. to discuss different native animals and plants and learn how to draw them. Materials provided.

**WHAT TREE IS THAT?** Meet seasonal ranger Aaron at Savage Gulf ranger station at 3 p.m. to learn about native trees and make your own field guides. You will be able to take these with you to identify native trees around the park and around your home.

For information call (931) 924-2980 or visit <www.friendsofscra.org/activities.htm>.

The South Cumberland State Park Visitors' Center is located on Highway 41 South between Monteagle and Tracy City and is open seven days a week, 8 a.m.–4:30 p.m.

## BOSWELLS

Landscaping, Concrete & Drainage  
Licensed & Insured  
Commercial/Residential

www.boswellsolutions.com  
(931) 962-9994 • (931) 205-2513

- Retaining Walls
- Concrete & Paver Stone Work
- Flagstone & Irrigation
- Yard Sewing/Dirt Work
- Year-Round Lawn & Landscaping Services

## C.W. Smith Construction

General & Electrical Contractor  
Est. 1986  
Sewanee, Tennessee 37375  
(931) 598-0500

New Homes • Additions • Remodeling  
National Association of Home Builders

# LOCALS

FALL & HOLIDAY SEASON OPENING

ARTISTS: JIMMY ABEGG, CLAY BINKLEY, JAMEY "OTIS" CHERNICKY, SUSAN CHURCH, TOM CHURCH, G. SANFORD MCGEE

FEATURING

HAND BLOWN GLASS & SCULPTURE BY THOMAS SPAKE AND EXTRAORDINARY "JUMPOFF" WALKING STICKS & STAFFS BY W.C. CRAIG (AKA "RAYDARR")

FALL AND HOLIDAY HOURS

SEPTEMBER 18 THROUGH DECEMBER 23  
NOON TO 5:00PM WEDNESDAYS THROUGH SATURDAYS  
(AND SPECIAL EVENT WEEKENDS)  
OR BY APPOINTMENT BY CALLING 931.598.0400  
LOCALSGALLERY@ATT.NET

WWW.MYERSPOINT.COM/LOCALS  
PHOTO: JIMMY ABEGG ©2009

### Full Service Copy Center

- Make 1 Copy or 1000's
- Photos To Canvas
- Booklets & Newsletters
- Business Cards - Make 12 or 1000's
- Custom Invitations & Announcements
- Wedding Invitations & Programs
- Fax Services
- 2 and 3 part Carbonless Forms
- Coil & Comb Binding
- Lamination up to 40"
- Foam Core Mounting
- Graphic Design

931-461-0034  
www.mcmurr.com

## McMurr's

WE MAKE COPIES  
For Your Personal & Business Needs!

Got Plans?

Contractors  
Realtors  
Engineers  
Architects

Print, Scan, Reduce  
or Enlarge your drawings!

101 West Open ST. SUITE 100  
TULLAHOMA, TN 37388

Make The Drive and Experience the McMurr's Difference!

## BUG PROBLEMS?

We can help! Call us for a free inspection!

### BURL'S TERMITE & PEST CO.

TERMITE—PEST—VAPOR CONTROL  
Bonded • Insured • Home-Owned & Operated  
117 Bypass Road, Winchester  
(931) 967-4547  
Charter #3824 • License #17759

REDUCED \$20,000—  
GUDGER ROAD

Now asking \$179,000.

Situated on 5 acres, this 2000 sf home has gas log fireplace, spacious L-shaped deck, unfinished basement, 3-stall barn, fenced and small pond. Within 5 miles of the University of the South. Contact Mike Maxon, (931) 308-7801, for your personalized showing.

ACREAGE—JUST OFF  
GEORGIA CROSSING

Scenic rural setting with wooded knoll and rolling pasture on 4 acres. Catch the sunrise over Sewanee Mountain while enjoying the view of Keith Springs Mtn. Close to Winchester, Decherd and just minutes from the Domain. Asking \$68,000. Owner/Agent Mike Maxon, (931) 308-7801.

30th  
HATFIELD  
Realty, Inc.  
931-968-0500

4470 Mansford Road, Winchester  
www.samhatfield.com



## From Bard to Verse

by Scott and Phoebe Bates

October: Latino History Month

...From France, and Okinawa, and the atolls of Leyte (Norman Mailer has written it out) and the infuriated air and the waves, almost all the men have come back now, almost all... The history of mud and sweat was green and sour; they did not hear the singing of the reefs long enough and perhaps never touched the islands, those wreaths of brilliance and perfume, except to die: dung and blood hounded them, the filth and the rats, and a fatigued and ruined heart that went on fighting. But they have come back,

you have received them into the immensity of the open lands and they have closed (those who came back) like a flower with thousands of nameless petals to be reborn and forget.

—From "Que Despietre El Leñador"  
("I Wish The Wood-Cutter Would Wake Up")  
by Pablo Neruda, translated by James Wright (1948)



## CONVENIENCE/ RECYCLING CENTER HOURS

The Convenience Center for household garbage, trash and recycling is located on University Avenue by the golf course. Its regular hours are: Monday, 1-6 p.m.; Tuesday through Friday, 3-6 p.m.; Saturday, 8 a.m.-4 p.m.; closed Sunday and on national holidays. There are recycling bins for metal (tin, appliances, etc.), newspapers/magazines, plastic, plastic bottles, cardboard and aluminum cans. Glass is not recycled here.

Licensed General Contractor

17 Lake O'Donnell Rd

# Steve Green Construction

Insured

Let me show you my local projects!

Office (931) 598-9177  
Mobile 308-7899  
E-mail [sgc@bellsouth.net](mailto:sgc@bellsouth.net)



WELCOME, UNIVERSITY VISITORS!  
Remember to drink responsibly—we want you as a customer for a long time!

# Village Wine & Spirits Inc.

## COMPETITIVE PRICES AND FRIENDLY SERVICE

~ ALL YOUR FAVORITE MAJOR BRANDS  
~ Great Wine Selection ~ Special Orders Available

Next door to the Smokehouse in Monteagle  
(931) 924-6900 ~ Mike Gifford, Owner  
Open Mon–Thu 11 a.m.–9 p.m.; Fri–Sat 9 a.m.–11 p.m.

## community calendar

### EVENTS

#### Today, Oct. 7

- 3:30 pm Mnttop Tumblers, Sew Cmty Ctr, ages 5-7, till 4:30
- 3:30 pm Yoga w/Hadley, St Marys Sewanee
- 4:30 pm Mnttop Tumblers, Sew Cmty Ctr, ages 8/up, till 5:30
- 5:00 pm CCJP Peace vigil, Univ Av/Hwy 41A
- 5:00 pm Meet Chef Wright, Cmty Engagement Hse, corner Ala/Mitchell Ave
- 6:00 pm Buddhist sitting grp, St Augustines
- 6:30 pm NA, Otey
- 7:00 pm HTSSE? Food panel disc, Convo Hall
- 7:30 pm Cinema Guild, M, free, SUT

#### Friday, Oct. 8

- SAS Board of Trustees, thru Oct. 9
- 8:30 am Yoga w/Carolyn, Sew Cmty Ctr
- 9:00 am CAC open, Otey, till 11:30
- 10:00 am Game day, Sew Sr Ctr, till 11:45
- 12:00 pm Sewanee Woman's Club reserv dline
- 4:30 pm Artist talk, Breyer, Univ Gallery, rcptn follows
- 5:00 pm MESSENGER display ad deadline
- 7:00 pm AA, Christ Church, Tracy City
- 7:00 pm Street dance, lawn between duPont & Spencer Hall, till 9
- 8:00 pm Guitar/vocal perf, Fuentes, Ayers M-C Ctr, till 10

#### Saturday, Oct. 9

- Deer Pre-cull, sunrise-sunset except 10-2
- 9:00 am Amer Legion Post 51, Legion Hall
- 10:30 am Mnttop Tumblers Sew Cmty Ctr, beginners, till 11:30
- 11:30 am Mnttop Tumblers, Sew Cmty Ctr, intermediate, till 12:30 pm
- 1:30 pm Dedication of SAS Wade Hall, Wade Hall Lawn
- 7:00 pm NA, Decherd United Methodist
- 7:30 pm AA (open), Otey parish hall

#### Sunday, Oct. 10

- Deer Pre-cull, sunrise-sunset except 10-2
- UNIV Board of Regents, thru Oct. 12
- 10:00 am Commemoration of laying of original UoS cornerstone, La Cir, followed by procession to All Sts
- 10:00 am Living/Dying Well, disc, Otey
- 12:00 pm Sustain Sew/GreenHouse cmty work party, Bairnwick Wom Ctr
- 4:00 pm Women's Bible study, Otey
- 4:00 pm Adult yoga w/Helen, Sew Cmty Ctr
- 6:30 pm AA (open), H Comforter, M'eagle

#### Monday, Oct. 11

- MES Fall Break, thru Oct. 15
- 8:30 am Body Recall, Sew Cmty Ctr
- 10:30 am Chair exercise, Sr Cit Ctr, till 11:45
- 12:00 pm Sewanee Woman's Club, St Marys, social 11:30
- 5:00 pm MESSENGER news deadline
- 5:00 pm Women 12-step, Otey parish hall
- 6:00 pm T'ai Chi w/Lance, Sew Cmty Ctr
- 7:00 pm AA, Christ Church, Tracy City
- 7:00 pm Centering prayer, Otey sanctuary
- 7:00 pm Sewanee Chorale, Hamilton Hall
- 7:30 pm Summit Lodge F&AM, Lodge Hall

#### Tuesday, Oct. 12

- 8:30 am Yoga w/Carolyn, Sew Cmty Ctr,

- 10:30 am Bingo, Sr Cit Ctr, till 11:45
- 10:30 am T'ai Chi w/Kat, Sew Cmty Ctr
- 12:00 pm MESSENGER classified ad dline
- 12:30 pm Founders Day Convocation, All Sts
- 4:00 pm Centering prayer, St Marys, till 5:30
- 7:00 pm NA, Decherd United Methodist
- 7:30 pm AA (open), Otey parish hall
- 7:30 pm Al-Anon, Otey parish hall

#### Wednesday, Oct. 13

- UNIV Board of Trustees meet
- 9:30 am CAC open, Otey, till 11:30
- 10:00 am Sewing/quilting group, Sr Cit Ctr
- 10:00 am Sew Cmty Ctr Bd meeting
- 12:00 pm Dedication Snowden Hall
- 3:45 pm GS Trp 2107, Otey parish hall, till 5
- 4:30 pm Lease agda dline, Lease ofc
- 5:30 pm Adult yoga w/Helen, Sew Cmty Ctr
- 7:00 pm Catechumenate, dinner, Wom Ctr
- 7:30 pm AA (open), H Comforter, M'eagle

#### Thursday, Oct. 14

- 8:30 am Body Recall, Sew Cmty Ctr
- 9:30 am CAC open, Otey, till 11:30
- 10:30 am Chair exercise, Sr Cit Ctr, till 11:45
- 12:00 pm AA (open), 924-3493 for location
- 12:00 pm Lunch & Learn, Keele, St Marys
- 12:30 pm EPF, Otey parish hall
- 3:30 pm Emeritus Assn, duPont, Torian rm
- 3:30 pm Mnttop Tumblers, Sew Cmty Ctr, ages 5-7, till 4:30
- 3:30 pm Yoga w/Hadley, St Marys Sewanee
- 4:30 pm Mnttop Tumblers, Sew Cmty Ctr, ages 8/up, till 5:30
- 6:00 pm Buddhist sitting grp, St Augustines
- 6:30 pm NA, Otey

### CHURCH SERVICES

#### This Evening, Oct. 7

- 4:30 pm Evening Prayer, Otey
- 5:00 pm Evening Prayer, St Marys
- 5:45 pm SoFT Community HE, COTA
- 6:30 pm Worship svc, Church of God

#### Friday, Oct. 8

- 7:00 am Morning Prayer/HE, St Marys
- 7:30 am Morning Prayer, Otey
- 7:30 am Morning Prayer, St Augustines
- 8:10 am Morning Prayer, COTA
- 12:00 pm Holy Eucharist, COTA
- 4:30 pm Evening Prayer, Otey
- 4:30 pm Evening Prayer, St Augustines
- 5:00 pm Evening Prayer, St Marys
- 5:40 pm Evening Prayer, COTA

#### Saturday, Oct. 9

- 8:00 am Holy Eucharist, St Marys

#### Sunday, Oct. 10

- All Saints' Chapel
- 8:00 am Holy Eucharist
- 11:00 am Holy Eucharist
- 4:00 pm Regents Holy Eucharist
- 6:30 pm Growing in Grace
- Cumberland Presbyterian
- 9:00 am Worship Service
- 10:00 am Sunday School
- Chapel of the Apostles
- 8:00 pm Compline
- Grace Fellowship
- 10:30 am Sunday School/Worship Service
- Harrison Chapel Methodist
- 10:00 am Sunday School
- 11:00 am Worship Service
- Jump-Off Baptist
- 10:00 am Sunday School
- 11:00 am Worship Service
- 6:00 pm Worship Service
- Midway Baptist
- 10:00 am Sunday School
- 11:00 am Morning Service
- 6:00 pm Evening Service
- Midway Church of Christ
- 10:00 am Bible Study
- 11:00 am Morning Service

- 6:00 pm Evening Service
- Otey Memorial Church
- 8:50 am Holy Eucharist
- 10:00 am Christian Formation
- 11:00 am Holy Eucharist

#### St. James Episcopal

- 9:00 am Worship and Fellowship
- 9:00 am Children Church School

#### St. Mary's Convent

- 8:00 am Holy Eucharist

#### Sewanee Church of God

- 10:00 am Sunday School
- 11:00 am Morning Service
- 6:00 pm Evening Service

#### Society of Friends

- 9:30 am Meeting, 598-5031

#### Monday, Oct. 11

- 7:00 am Morning Prayer/HE, St Marys
- 7:30 am Morning Prayer, Otey
- 7:30 am Morning Prayer, St Augustines
- 8:10 am Morning Prayer, COTA
- 12:00 pm Holy Eucharist, COTA
- 4:30 pm Evening Prayer, Otey
- 4:30 pm Evening Prayer, St Augustines
- 5:00 pm Evening Prayer, St Marys
- 5:40 pm Evening Prayer, COTA

#### Tuesday, Oct. 12

- 7:00 am Morning Prayer/HE, St Marys
- 7:30 am Morning Prayer, Otey
- 7:30 am Morning Prayer, St Augustines
- 8:10 am Morning Prayer, COTA
- 4:30 pm Evening Prayer, Otey
- 4:30 pm Evening Prayer, St Augustines
- 5:00 pm Evening Prayer, St Marys
- 5:40 pm Evening Prayer, COTA

#### Wednesday, Oct. 13

- 7:00 am Morning Prayer/HE, St Marys
- 7:30 am Morning Prayer, Otey
- 7:30 am Morning Prayer, St Augustines
- 8:10 am Morning Prayer, COTA
- 11:00 pm Holy Eucharist, COTA
- 4:30 pm Evening Prayer, Otey
- 4:30 pm Evening Prayer, St Augustines
- 5:00 pm Rosary, Rite III HE, St James
- 5:00 pm Evening Prayer, St Marys
- 5:40 pm Evening Prayer, COTA

#### Thursday, Oct. 14

- 7:30 am Morning Prayer, Otey
- 8:10 am Morning Prayer, COTA
- 8:30 am Morning Prayer, St Augustines
- 4:30 pm Evening Prayer, Otey
- 4:30 pm Evening Prayer, St Augustines
- 5:45 pm SoFT Community HE, COTA



## TRAFFIC REMINDERS

It is state law to have your headlights on in fog and rain. The speed limit on the University campus is 25 mph.



WELCOME, FOUNDERS' DAY VISITORS! Drop by for a tour and enjoy a glass of wine.

Call 931-924-3869  
204 W. Main St., Monteagle  
[www.monteagleinn.com](http://www.monteagleinn.com)