

The solution to master-key system control



PROMASTER MASTER-KEYING 8

Complete master-keying solutions for professional locksmiths,
from the sole trader to large lock shops and lock manufacturers.

ProMaster Master-Keying 8 is a powerful, versatile and robust software solution that allows you to design, create and manage master-key systems.

ProMaster Master-Keying 8 will allow you to create larger and more complex systems more easily than ever before.

The newest version of the world premier master-keying software solution has arrived.

ProMaster Master-Keying 8 is the most comprehensive master-key system management tool available anywhere in the world. ProMaster 8 is powerful, versatile and robust, and has been designed to meet the requirements of lock manufacturers and professional locksmiths worldwide.

ProMaster 8 is used by more locksmiths and lock manufacturers than any other master-keying software product. It supports more lock products than any other software, has unparalleled support for key cutting machines and supports larger master-key systems than any other software.

ProMaster 8 is designed, developed and supported by a full-time team of people employed by WH Software. It is not outsourced for development; it is not produced as a spare-time project; and support is available through our resellers and directly from our team.

Who is it for?

With three product editions (Basic, Premium and Manufacturer), ProMaster 8 is for everyone from single person operations to small lock shops, large lock shops and lock manufacturers, schools, universities, law enforcement and corporates with their own locksmiths.

Product range

ProMaster 8 supports a huge range of lock products in 30 design modules (see **Lock systems** later in this brochure).

Schlage, Best, Medeco, Assa, Abloy, Sargent, Corbin Russwin, Yale, Arrow, Chicago, Dorma, Kaba, Lockwood, BiLock, Galaxy, Tokoz, KeyMark, KeyUltra, Union, Perk, Abus, Kwikset, Weiser, Master, EVVA, GeGe, Iseo, Cisa, Pfaffenhain, Mul-T-Lock.

Interchangeable core mixed systems are supported too (e.g. Assa, Medeco, Schlage, Yale).

ProMaster 8 is the master-keying product of choice for most lock manufacturers.

Documentation

Product documentation is extensive. It is always available as context sensitive help and can be downloaded as a PDF for those who want to read it like a book. Documentation is updated with every product release. A variety of instructional video clips are available on YouTube.

Support

Support is available from WH Software's highly experienced staff, and our resellers are trained to be competent to provide support.

We do not outsource support to a call centre.

Updates to ProMaster 8 are notified to all customers by our email alert service to which you are encouraged to subscribe.

ProMaster 8 is backed by highly responsive development, build, test and release processes which allow us to release product updates as and when required.

Training

For those customers who prefer training classes over self-learning, we have a training service available, in both group classes and customised on-site training.

Overview

Design, create and maintain your master-key systems.

- Simple systems
- Complex systems
- Cross-keyed systems
- Keyed-to-differ systems
- Interchangeable core systems
- Construction keyed systems
- Mixed systems
- Everything

ProMaster 8 does the calculation and administration of master-key systems on a wide variety of locking products.

The ProMaster 8 user interface is consistent across the whole program and impeccable care and attention has been given to all aspects.

ProMaster 8 is fast.

ProMaster 8 is powerful, allowing for many users at the same time while protecting systems from being changed by multiple users concurrently.

ProMaster 8 supports a huge range of lock products from inline "flat key" and interchangeable core through to high security specialist restricted lock systems (see **Lock systems** later in this document).

ProMaster 8 is the master-keying product of choice by most lock manufacturers.

Data entry

Quick, easy and accurate to use. Data may be entered manually or with various tools:

- Predictive key and door numbers so creating even large master-key systems is quick and simple
- Import from text-based CSV files
- Import from Excel files
- New systems from hierarchy wizard – generates a system from the master-key structure
- Bulk change tool
- Duplicate door wizard
- Duplicate door area wizard
- Import/export key systems
- DHI numbering or international numbering
- Standardised use of Windows hotkeys throughout to make expert users even quicker

Excel exports and imports

Excel export, Excel import and import a system extension from Excel.

Does not require Excel on the computer.

Customise Excel templates so you can give your customer a branded spreadsheet.

CSV file exports and imports

Extensive range of CSV exports and imports with simple wizards and complete documentation.

System exchange

Export to and import from other ProMaster 8 users. Entire system information and history is exchanged.

Reporting

ProMaster 8 generates crisp clean professional looking reports with logical and consistent layouts.

Reports have a wide range of options for selecting the information to include in the report and which data to display.

System reports

- System details – A summary of the system information
- Keys – The keys in your system with the option to show doors
- Key hierarchy – The keys in your system presented in a tree style hierarchy
- Doors – The doors in your system with the option to show keys
- Keying matrix – The keys and doors in your system presented as a matrix with many options for what to show and optionally show only the first door for each combination of operating keys
- Key history – A complete order history for your keys showing each job
- Door history – A complete order history for your doors showing each job
- System lock usage – A summary of product used on the system
- Order form – A report for your customer to indicate what items they want to order
- Signature registration form – A report for gathering system signatory details and signatures
- Signatory key authority matrix – For highly secured systems, a matrix of signatory-key permissions
- Signatory door authority matrix – For highly secured systems, a matrix of signatory-door permissions

Job management

Complete job history of keys cut and cylinders manufactured; including date and time entered, manufactured and completed and the users involved.

Job manufacturing

ProMaster 8 job reports for parts required, key cutting, test key cutting, pinning (cylinder assembly) and client job summaries.

ProMaster 8 prints labels for keys and cylinders and includes a sophisticated label designer to allow you to create your own label sizes and layouts. Very easy to use!

ProMaster 8 has unparalleled integration with the widest range of key cutting and marking machines and is the only product available that communicates directly with Silca, Keyline and Ilco machines (see the **Supported machines** section for details).

On-screen pinning can be used for cylinder assembly if you prefer to eliminate paperwork.

XML outputs of the job (key and cylinder) information are available for custom integration solutions.

Manufacturing reports, on-screen pinning and exports are comprehensive, including all information required for manufacturing (such as bottom pins, master pins, top/driver pins, construction keying, part codes, cylinder keying, stamping, key cuts, coloured key heads and a whole lot more).

Job manufacturing reports

- Job pre-release key confirmation
- Job pre-release door confirmation
- Job summary
- Parts required
- Shipping labels
- Key cutting chart
- Key cutting chart for test keys
- Key labels
- Pinning chart
- Door labels
- Client key confirmation
- Client door confirmation

Administration reports

- Unreturned signature registration forms
- Systems without signatories
- Signatories without a signature picture
- Jobs awaiting coding or manufacturing
- Job administration summary
- Job key section usage
- Aged systems
- Key Manager users
- And more

Security

To ensure tight system security, ProMaster 8 has a wide range of security settings that your administrator may grant to each user (e.g. Data entry, coding, manufacturing, etc.) and you may even restrict who may open each system.

User authorisation is stored using sophisticated hashing to protect against brute force attacks and you may also integrate with Active Directory for user authentication.

Printer configuration

Printers are separately configurable for standard reports and manufacturing reports with the option to print on both sides.

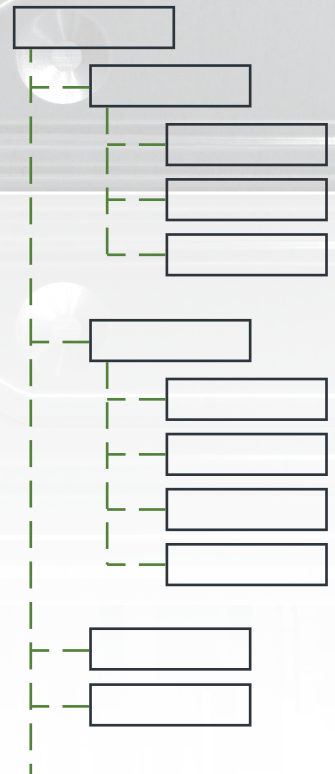
Reports may be saved in PDF format and emailed. Email support for MAPI mail programs, Outlook, SMTP, Encrypted SMTP (e.g. Office365). Emails are sent in HTML, allowing full control over appearance.

End user report writer available as a separately licensed feature.

Document storage

Store all sorts of documents with your systems including Outlook messages, Word and Excel documents and PDF documents.

Import images or acquire directly from your scanner.



Coding with flexibility

Enter your own Top Master Key or generate one.

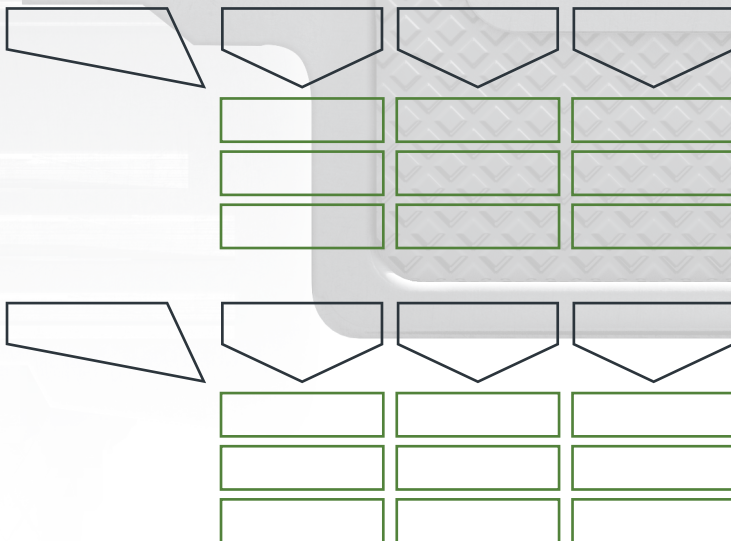
Design assistant to calculate the design for your system. ProMaster 8 does not lock you into a design. All data is stored as the actual key cuts and calculations are performed according to the keys that operate each cylinder so even if you change the design you do not lose your data.

Multiple code progressions (key bit arrays) per system with progression sequence manipulation, progression notes, descriptions, rotated constants and complete key bit array manipulation.

Separate external and internal keying is possible.

Cross keying at all levels of the system design.

Complete error checking, including on mixed systems (e.g. MT5 with MT5+, Medeco I/C with Schlage I/C and Yale I/C).



Coding, tree, matrix, grid

Whether you're familiar with 'Code pages', 'Matrix', 'Grid' or 'Tree', ProMaster 8 will display system codes in a familiar and usable format.

Code progressions let you present Matrix and Tree data multiple ways in the same system, even allowing a system to be seen as both Tree-codes and Matrix-codes. See the complete progression or just a code page at a time.

Kaba positional systems (e.g. experT pluS) use a sophisticated coding grid with a simple to use progression tool and give complete control over rotor-stators and over the assignment of blind cuts.

Multi key section/ keyway (Multiplex)

Complete control over key section families for you to enter your key sections, keyways and their relationships.

Automatic coding

The design assistant calculates the design required for your system. TMK codes are checked against other systems to ensure uniqueness. Powerful and easy to use progression designer with test screens to allow you to visualise the solution before saving it.

Having designed a system, you are not locked in – you can alter the system design to allow for expansion or changes at any time.

Powerful automatic coding capabilities that don't compromise the ability for you to precisely control the system. In addition to automatic coding you have full control over codes and key sections.

Interchangeable Core - full calculation for core and full phantom check of opening and core removal, even with mixed systems.

Unlike some software solutions that are inflexible in allowing change, or at the worst level, require systems to be completely recreated to accommodate changes, ProMaster 8 allows complete flexibility.

Restricted lock systems

Restricted systems such as Abloy Protec, Lockwood MT5 and Kaba experT pluS work cooperatively with the lock manufacturer to protect the integrity of your key systems.

Lock systems

ProMaster 8 has 30 design modules to choose from that support a huge range of lock products. At the time of writing the following lock products are supported:

- Inline “flat keys” (numerous depth and space cards and construction keying)
- Lockwood Gen6T, Twin & MT5/MT5+
- Interchangeable Core: Best A2, A3, A4, Medeco Keymark, Kaba Peaks 140/150, Sargent 6300, Sargent DG1, Corbin Russwin System 70, Schlage, Yale
- Abloy Classic, Profile, Exec, Sentry, Disklock, Novel, Protec 1 & 2
- ABUS Pfaffenhain XY14
- Assa Abloy Union, KeyUltra & Perk
- Assa USA standard, LFIC, SFIC, CAM, special function (limited rotation, directional)
- Australian Lock Company BiLock, BiLock Exclusive & Galaxy
- Chubb Detainer
- Evva 3KS, 3KS Plus, 4KS & DPE (Australia DPS, EPS)
- Kaba Quattro, Gemini, expert, expert plus & ACE
- Lockwood Twin, MT5/MT5+
- MLA Binary Plus & DC1
- Medeco Original 10 & 60 Series and Biaxial 10 & 60 Series
- Sargent DG2, DG3
- Tokoz Pro

Product editions

ProMaster 8 is for everyone.

New to ProMaster 8 is the “Basic” edition, supporting inline “flat key” systems making the product available to customers who don’t need multiple users or system types.

Basic edition

Don’t for one moment think that this is a feature-poor version. It is not! It has almost all the capabilities of the Premium edition but is limited to a single user and design modules Inline, Interchangeable Code, MLA Binary Plus, MLA DC1, Lockwood Twin.

Full system capabilities: Yes; Full coding capabilities: Yes; Full reporting: Yes; Email: Yes; Full manufacturing and job history: Yes.

This is the new ProMaster offering for small organisations and sole traders who don’t supply high-end lock products.

Premium edition

This is the mainstream product. Up to 999 users can be supported simultaneously. Design modules for all locking products except a few which are manufacturer-specific are available.

For ProMaster 7 users, this is the direct replacement product.

Manufacturer edition

This edition is for lock manufacturers. Up to 999 users can be supported simultaneously. Design modules for all locking products are available. Some additional integration features are available. Bespoke customisations are available in the Manufacturer edition.

Supported machines

Key cutting machines

- Silca UnoCode V1, V2, 199, 299, 399, 399 Evo, 399 Plus, UnoCode Pro, Triax e-Code, Triax Quattro, Triax Pro, Futura V1, V2, QuattroCode, Protech*
- Keyline Dezmo, Ninja, Ninja Laser, Ninja Vortex, Ninja Total, Versa, Sigma Pro*
- Abloy LT106, LT120*
- ALC Galaxy*
- CYA/Maromatic
- HPC CodeMax
- Ilco EZCode, UltraCode*
- ITL 9000, 950
- Miracle A9*
- Mul-T-Lock KC5*
- Orion ECM200, Luna
- XML output for factory integration

Key marking machines

- Silca Marker 2000*
- Gravograph
- Ilco Engrave-It Pro
- JMA MultiMark
- Generic key marker
- XML output for factory integration

Cylinder manufacturing machines

- ALC Galaxy*
- XML output for factory integration

Cylinder marking machines

- Silca Marker 2000*
- Gravograph
- Ilco Engrave-It Pro
- Generic cylinder marker
- XML output for factory integration

* ProMaster 8 is the only product that communicates directly to these machines.

Machine availability varies according to product edition and design module. Enquire for information specific to your needs.

Capabilities

No. of clients: unlimited

No. of systems: unlimited

No. of signatories per system: unlimited

No. of keys per system: two million

No. of doors per system: two million

No. of door-key relationships per system: unlimited*

No. of jobs per system: unlimited

Maximum number of users: 999

Maximum levels of hierarchy: unlimited

Key section/Keyway families: unlimited

Ample storage for data. Some examples of field lengths: System number 20, system description 200, key number 20, key description 200, door number 20, door description 200.

Data entry and storage is fully Unicode so there is no limit on international language support.

*Limited only by workstation resources.

Ultimately there are limitations on internal numbers that are in the quintillions, but the practical limits will be on storage space available and memory available.

Backups

Integrates with the Windows Task Scheduler for daily backups including email notifications.

System "snapshot" capability to create a 100% copy of a system before you make any changes.

Technology

ProMaster 8 is backed by a robust and secure multi-user database engine that is efficient and fast. Transfer of data over your network is transmitted securely to ensure there are not attacks on the integrity of your data.

ProMaster 8 can be used on a single PC, on a LAN or on a WAN.

All data is under your control and on your premises.

System Requirements

Workstations: Windows 10 preferred, Windows 7 or later supported.

Multi-core CPU, minimum 4GB RAM, 400MB disk space, 1600 x 1050 display, 1920 x 1200 display preferred.

Server: Windows 2016 or later preferred, Windows 7 or later supported. Multi-core CPU, minimum 4GB RAM, 4GB disk space, 1600 x 1050 display.

For complex coding two displays are beneficial.

A Windows supported printer is required for reports.

A Windows supported label printer is recommended for labels however you may use sheet labels.

Contact us for complete specifications if you have any queries.

About WH Software

WH Software was founded in 1996 to supply locksmithing solutions initially to Australasia. Our entry into supplying software to lock manufacturers in 1998 saw a rapid growth in our customer base followed by providing solutions to the rest of the world.

WH Software have a team of people who have been with the company for many years and are dedicated to product excellence and world class support of our customers.

We are committed to producing the highest quality products and upholding the highest standards of business ethics and professionalism.

Innovation never sleeps. ProMaster 8 was a huge development undertaking to provide a software platform for many years to come. It reflects our recognition of the importance of our customer base and their businesses and our commitment to a long-term plan to meet customer expectations of stability and longevity.

Other products

ProMaster Key Manager

Key issue management and tracking for the master-key system customer.

ProMaster Key Manager software allows the master-key system customer to fully control key issue and return to staff and other key holders. The importance and security significance of this task is often overlooked in many organisations, who despite having complex and expensive master-key systems, have poor record keeping for key control.

ProMaster Key Manager accepts data from the locksmith with ProMaster Master-Keying to update the records of keys, doors and keys cut so the ProMaster Key Manager user always has accurate master-key system records.

ProMaster Key Manager is for:

Companies and organisations of all sizes: schools and institutions, property management companies, local councils and municipalities, hospitals, prisons and utility companies. It's for everyone wanting to control the keys in their master-key system.

ProMaster Hardware

Hardware scheduling, quoting, installation, supply and comprehensive change management for building projects.

ProMaster Hardware manages projects with ease:

- Scheduling.
- Quoting (Adding prices to the schedule).
- Variation approval and tracking process.

- Installation management
- Shipments (What's been sent)
- Communications
- Claims (Payments)

ProMaster Hardware is for:

Architectural hardware suppliers, hardware and lock manufacturers and locksmith companies.

Contacting us

Where are we

The WH Software Ltd office is located on the North Shore of Auckland in New Zealand. We have a full-time team working in our office so email and phone messages are answered and responded to promptly. Frequently we check and respond to email enquiries outside of normal hours to accommodate urgent matters with our customers in all time zones.

Deliveries

7b William Pickering Drive
Rosedale
Auckland 0632
New Zealand

Postal

WH Software Ltd
PO Box 300-655
Albany
Auckland 0752
New Zealand

Phone

Intl: +64 9 415-5333
USA: 1 888 648-7111
UK: 0 800 917-2694

Email

support@whsoftware.com