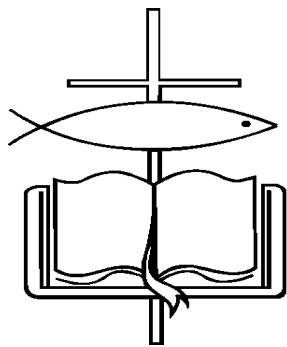




St. Paul Lutheran Church
617 St. Lawrence Avenue
Beloit, WI 53511

Church Office Hours
Currently closed due to
COVID-19 Precautions
(608) 365-7064
secretary@stpaulbeloit.org
www.stpaulbeloit.org

***A congregation of the Evangelical Lutheran Church
in America (ELCA)***



The St. Paul Lutheran News

***St. Paul Lutheran Church is called to be an Inviting, Christ Centered
Spiritually Growing and Community Serving Church where we are led by
love to implement Jesus' teachings.***

JULY 2020

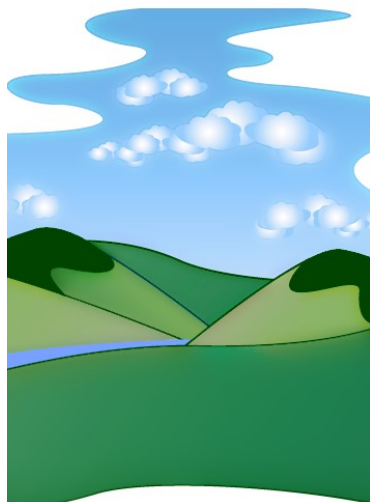
Staff:

Pastor:
Rev. Lucy Wynard

Secretary:
Resa Haile

Custodian:
Chet Organ

Music/Choir Director:
David Frank



Sunday Worship Schedule

**In-person worship resumes July 9—
see article inside for details!**
Or join us online ***each Sunday at 9:30 am***
for a worship service on our
St. Paul Facebook page
(facebook.com/stpaulchurchbeloit)
or our YouTube channel— recordings are
available to watch any time.
Like & Follow us on Facebook!

We received a “thank-you” from Caritas for our donation

Caritas has been dedicated to closing the gap of food insecurity for those in need and sharing the necessities of life for 46 years. They are grateful for St. Paul’s support in helping to continue their mission.

Designated Mission Outreach

Benevolence / Mission Outreach for the month of
July:

PROJECT 16:49

(HOMELESS YOUTH SERVICES)

*Your donations (put in **red offering envelopes**) will be*

Lutherdale Fest



QUILT AUCTION

34th Annual Lutherdale Fest Quilt Auction

Saturday, August 8, 2020 - 9am to 3pm

An annual fundraiser to support the life changing ministry of Lutherdale. This event is outdoors. Physical distancing is requested and masks are encouraged. For more information, go to:

<https://www.lutherdale.org/quilts/>

Survey

Reminder: Please fill out our survey regarding returning to in-person worship in the era of COVID-19.

The bottom portion of the survey is to **update contact information**—phones, addresses, and emails—so that we are able to keep in touch with you and *update you* about events and important changes.

South-Central Synod of Wisconsin Bishop Election Update

Because of Covid-19 the regularly scheduled Synod Assembly, held annually the first weekend of May, had to be postponed. Now the Synod has scheduled a **special Assembly to be held Saturday, August 1, via a 12-site video conference**. Ken & Marilyn Harris, Hayden Murry, and Pastor Lucy will represent St. Paul as voting members at the Assembly, which will focus on two primary agenda items: the election of a bishop and passing of a budget. Through a new process our Synod has already identified 4 final candidates for the office of Bishop. You can **read more about the election process and see interviews with the candidates** at:

scsw-elca.org/2020bishopelection/

These are critical decisions coming at a critical time in the life of our Church and world. ***Please keep the candidates, our voting members and the Assembly in your prayers!***

Soup Lunch volunteers continue to serve the community with Soup Lunch To-Go, handing out 312 meals in May and 315 in June.

You can give to our Soup Lunch ministry by going to <https://tithe.ly/give?c=531526> or by mailing your donations to: St. Paul Lutheran Church, 617 St. Lawrence Ave., Beloit, WI



53511. We are also particularly in need of water bottles, forks and spoons, and individual

July Soup Lunch Menu

8 Beef barley soup
15 Cheesy potato soup
22 Chicken noodle soup
29 Mostaccioli

ZOOM COFFEE & CONVERSATION WITH PASTOR Tuesday Check-Ins

Check-ins are happening Tuesdays at 2 pm & 7 pm

Our 2 pm group especially would welcome new members as it's quite small. If you're struggling with the technology, please let us know and maybe we can talk you through it. You do not need a computer! Simply call in & enter a meeting ID to join via conference call. There's no real agenda - it's just a virtual coffee hour time (byoc, of course).

To call in dial: (312) 626-6799 and enter the meeting ID.
Contact the church office for meeting IDs.

A GRADUATION CELEBRATION



Our 2020 graduates have experienced a senior year for the history books! We want to bless them and send them into the next steps of their journey with all of our prayers and love. On June 14, **Audrey McManigle** and **Quinton Scoville** were each presented with their gift from the congregation - including a unique quilt created for each - and a slideshow of photos of each student. This brief service is available on Facebook and YouTube to watch at any time. **Thank you to all who came to our (drive-thru) celebration! We pray God's richest blessings on our grads.**

Hey St. Paul - are you ready to go back to church?

Well, get ready, because St. Paul will be resuming in-person worship the week of July 6, with two service options
(**still to be determined**).

But before we head back into the sanctuary, there are some important points of emphasis.

The CDC recommends that if you fit in **ANY** of the following categories for the time being you stay at home and worship online (**Yes, online worship will still happen!!!**):

- You are 65 or over;
- You have underlying medical conditions;
- You may have been exposed to an illness;
- You have a fever or cough;
- You feel unsafe about coming.
- As you are entering church, please make sure you are **wearing a mask**. This is to show your love for your neighbor and fellow church attendee. If you don't have a mask, one will be provided for you.
- Before you enter the sanctuary please **use hand sanitizer**. Hand sanitizer stations will be available for you.

- When selecting your seat please **keep physical distancing in mind**, staying 6 feet apart. The pews will be marked to help you with this. Families who live together can sit together.
- **The service will look different**: It will be shorter, there will be no singing, or sharing of the peace. Pastor Lucy will not be shaking hands. We will be doing communion differently - probably less frequently and with precautions in place (stay tuned...!)
- **Offerings** can be dropped in a basket on the back table of the Narthex or still given online or mailed to the church office.
- We miss our church friends, but please **refrain from socializing** after the service and leave the church promptly, spreading out and keeping our distance from one another. Again - **this is out of love and care for one another!**
- If you often get thirsty, please **bring your own covered water bottle** as the drinking fountain will be unavailable.

And just one more time as a friendly reminder . . .

**ONLINE SERVICES WILL STILL BE AVAILABLE
EVERY SUNDAY MORNING!**

Your St. Paul Council

SPECIAL THANKS TO MARILYN HARRIS

for coming in to help with secretarial training
and for all her efforts to research and order the hand
sanitizer dispensers!

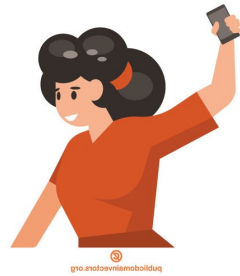
SPECIAL THANKS TO LEXI BLAZER

for all of her help getting the surveys out!

Want to attend Zoom meetings? No
Computer?

Just prefer to use your phone?

You can attend Zoom meetings with audio only
by calling 312-626-6799 and enter a meeting
ID. Contact the church office for meeting code.



MINISTERS OF WORSHIP SUMMER SCHEDULE - Online

<i>Date</i>	<i>Reader</i>	<i>Intercessor</i>
July 5	Carol Josh	Dave Knutson
July 12	Sharyn Pann	Chet Organ
July 19	Jean Neitzel	Henry Pann
July 26	Chet Organ	Hayden Murry
August 2	Greg Wilson	Sharyn Pann
August 9	Cathy Oswald	Marilyn Harris
August 16	David Frank	Larisa Chmielewski
August 23	Rachel Wilson	Jean Neitzel
August 30	Jane Carr	Dave Knutson

St. Paul Lutheran Church Council Members

President	Ken Harris
V.P., Property & Personnel	Judy Markee
Secretary & Staff Support	Jane Carr
Treasurer	Glenda Liptow
Financial Secretary	Katie Hassenfelt
Worship & Music	Jean Neitzel
Youth Ministry:	Jen Murry
Parish Education	Linda McManigle
Church in Society	Dave Knutson

Treasurer Report: May 2020 - June 2020

<u>Income Category</u>	<u>Amount</u>	<u>Summary</u>	<u>Amount</u>
Regular	11703.00	Beginning Balance	2575.15
Office Acc.Deposit		Income	24267.35
Soup Lunch	25.00	Available Funds	26842.50
PPP 5/7/2020	9007.00	Expenses	13359.19
Christ in Home		Correction	
Adaptive Alliance	700.00	Ending Balance	13483.31
San Jose	600.00		
Mission Outreach	102.00	Spending Plan/Mo.	15704.00
General Fund	22137.00	Over/Under Mo.	8563.35
Online Giving	2130.35	Over/Under Year	10231.36
Total Income	24267.35		
		Roof Fund-Beg. Bal.	11477.98
Call Comm.-Beg. Bal	126.56	-Dispersment	0.00
-Deposit	0.00	-Deposit	50.00
- Disbursement	0.00	-Ending Bal.	11527.98
-Ending Balance	126.56		
		Organ Fund-Beg.Bal	714.80
Sound Sys.-Beg. Bal.	1100.00	-Deposit	0.00
-Deposit: Member	0.00	-Ending Bal.	714.80
-Deposit: Dinner	0.00		
-Ending Balance	1100.00		

Love Will Be Our Guide



Ephesians is one of my favorite books – it has a wonderful summary of the deepest theological truths combined with down-to-earth advice about what that means for us. For example, as The Message Translation puts it:

*“Make a clean break with all cutting, backbiting, profane talk. **Be gentle with one another, sensitive.** Forgive one another as quickly and thoroughly as God in Christ forgave you.*

*Watch what God does, and then you do it, like children who learn proper behavior from their parents. Mostly what God does is love you. **Keep company with God and learn a life of love. Observe how Christ loved us.** His love was not cautious but extravagant. He didn't love in order to get something from us but to give everything of himself to us.*

Love like that.”

Ephesians 4:31—5:2

St. Paul is entering yet more uncharted waters – a time of both online and in-person worship. In-person worship will look and feel dramatically different than “normal.” As a society we struggle to know or even to have constructive conversation about what the best, most effective, least harmful practices should be. Should face masks be required? Is it safe to eat in restaurants or go to the gym? Is it reasonable to expect children at school to keep physical distance, never touch one another, and wear face masks all day? These questions become personal very quickly. Should I visit my parents, both of whom have underlying health conditions and are over the age of 65? Is it more harmful for my children to go to school with the stress all those precautions in place and the potential for infection, or for them to be isolated at home, struggling to learn online and away from interaction with their peers? Is it safe for me to go out? Is it safe to go back to church?

I wish – oh boy do I wish! – that I had clear, certain answers to these questions. But for almost all of us this is our first global pandemic. **The hard truth is we'll probably only know the right answers in retrospect. And even then there will be debate.** Your St. Paul Council and I, your Synod leaders and ultimately national religious

leaders who have consulted the best experts in the country, are all doing our best – but our best is unavoidably limited. We simply don't know.

So this is **my plea to us all – let love be our guide.** Practice the daily, basic and yet oh-so-hard disciplines of love: patience, kindness, gentleness, humility, forgiveness, seeking first the well-being of others. That has led our St. Paul leaders to an attempt to balance needs: the need for spiritual and relational connection with the need for physical safety. Worship both online and in-person, with pretty strict precautions in place to keep us safe. It is not a final answer – it is a best-attempt for the time being.

In all of this we rest on the bedrock truth that Paul, and all of Scripture, continually bring us back to: **God has loved us beyond our wildest imagination and God's love will hold us safe forever.** No matter what.

My prayer for you – my prayer for us – in this difficult season is that we would **embrace the opportunity to know more of the unknowable, all-surpassing love of God, and practice the power of that love** in our own lives.

With you in the hope of God's eternal love,

Pastor Lucy

Pastoral Care Fund

Over the last several months St. Paul has received a few donations designated for "those in need" connected with our congregation. We periodically receive such donations, sometimes in the form of cash and sometimes gift cards. These gifts will be deposited in a "Pastoral Care Fund" which Pr. Lucy oversees. Please be aware that you may designate gifts to this fund and also that if you find yourself in a time of particular critical need you may reach out to Pr. Lucy to receive help. She can walk you through the few parameters and preserve confidentiality about your need.