

The Strong Local Capability of RI DMAT & RI Medical Reserve Corps



Tom Lawrence, NREMT-P, I/C
Team Leader





Disclaimer Statement

No financial conflicts of
interest

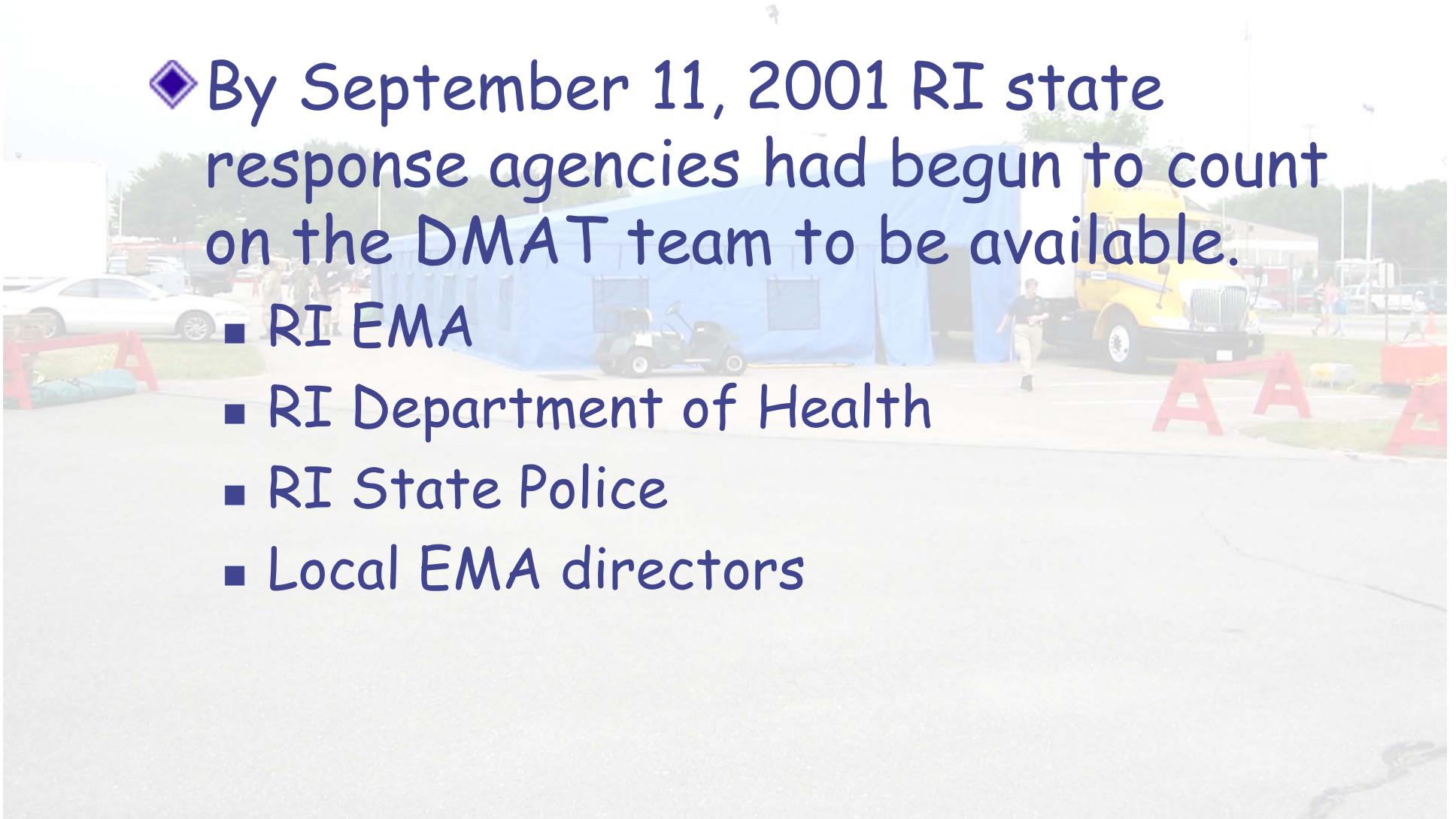
RI Historical Perspective

- ◆ A group formed in 1990 in response to requests from NDMS.
- ◆ As the team formed, they sought training opportunities within the state.
- ◆ Mass Gathering events presented an ideal avenue for this training.

Brief History (cont.)

◆ By September 11, 2001 RI state response agencies had begun to count on the DMAT team to be available.

- RI EMA
- RI Department of Health
- RI State Police
- Local EMA directors



Brief History (cont.)

- ◆ At 0950 on September 11th the Federal team and all of their equipment were alerted to deploy to NYC.
- ◆ At 1015 RI EMA call to ask if the team should be considered a federal or state asset.
- ◆ EMA was advised that the team and its cache had been deployed.

Moving Forward

- ◆ An inspired RI DoH realizes that Hospital Preparedness Program dollars can be dedicated to building an in-state capability for mobile medical assets.
- ◆ The DMAT team, now a 501 (c) 3 non-profit organization, was a logical choice to fill a new role.

How It Works

- ◆ RI DoH contracts with RI DMAT (the non-profit) for Mobile Medical Assets, utilizing HPP funding to build and maintain the capability to establish a Disaster Field Hospital.
- ◆ Deliverable based contracts enabled the team the flexibility to buy and configure the cache based upon their needs & experience.

Medical Reserve Corps Grantee (OSG)

11th year of operation after a 3 year award
from US PHS/OSG

- ◆ Over 1550 healthcare providers enrolled
- ◆ On-Line database and application process
- ◆ ESAR/VHP contractor for Rhode Island
- ◆ www.riresponds.org

RI-1 DMAT

- Federal Response Team of the National Disaster Medical System
- Medical Reserve Corps Grantee (OSG)
- Rhode Island Medical Response Team
- Contractor to RI Department of Health

History of National Activities

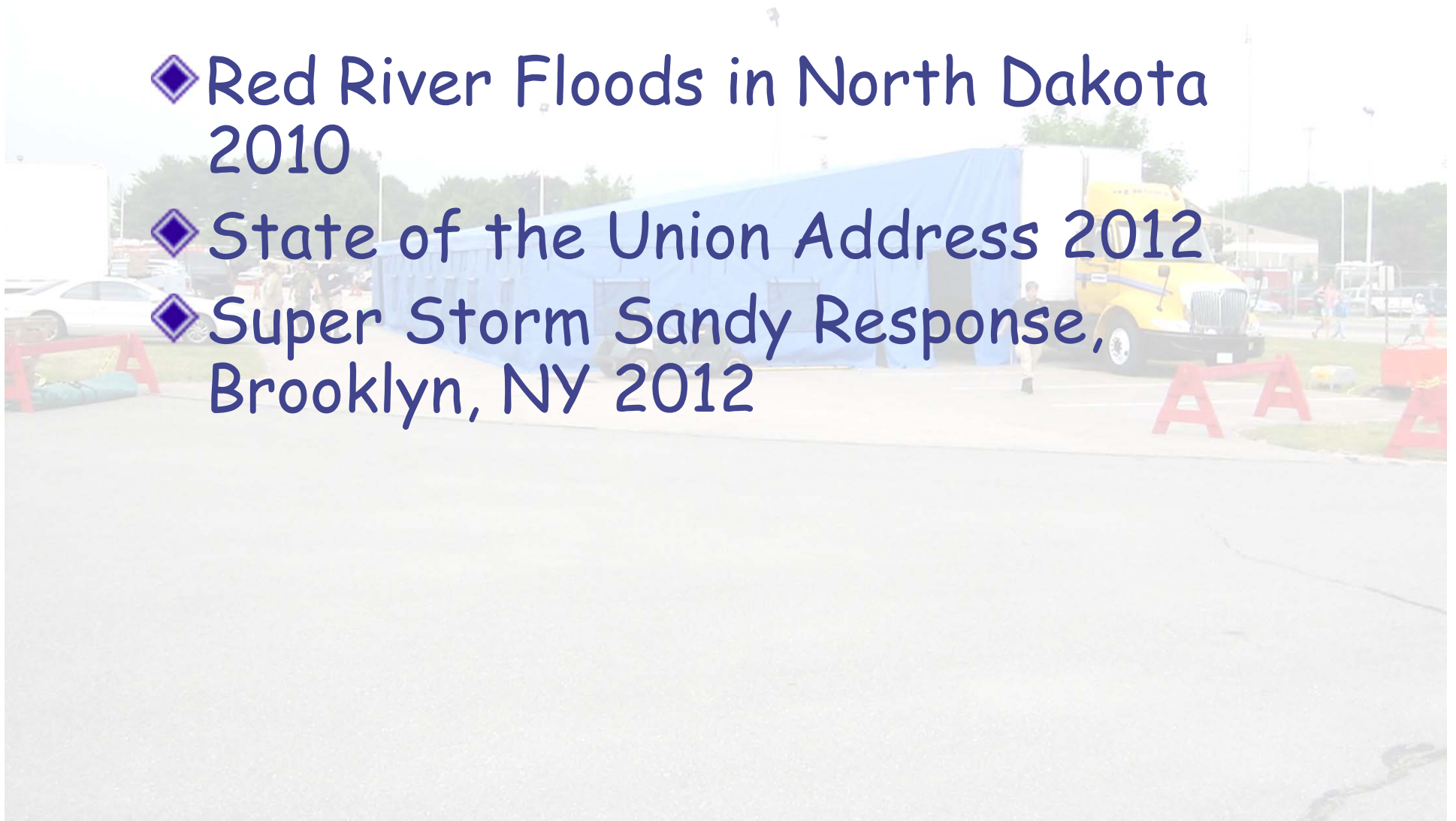
- ◆ Upstate New York Ice Storms 1998
- ◆ Egypt Air Flight 990 1999
- ◆ World Trade Center Disaster 2001
- ◆ New York City Postal Workers Anthrax Incident
- ◆ 2002 Salt Lake City Olympics
- ◆ Democratic National Convention 2004

National Activities

- ◆ Responses to Hurricanes Katrina (Superdome), Ophelia, & Rita 2005
 - Four teams deployed to the Gulf Coast almost continuously from August 28th-November 13th
- ◆ State of the Union and Hurricane Ernesto 2006
- ◆ Hurricanes Gustav and Ike 2008

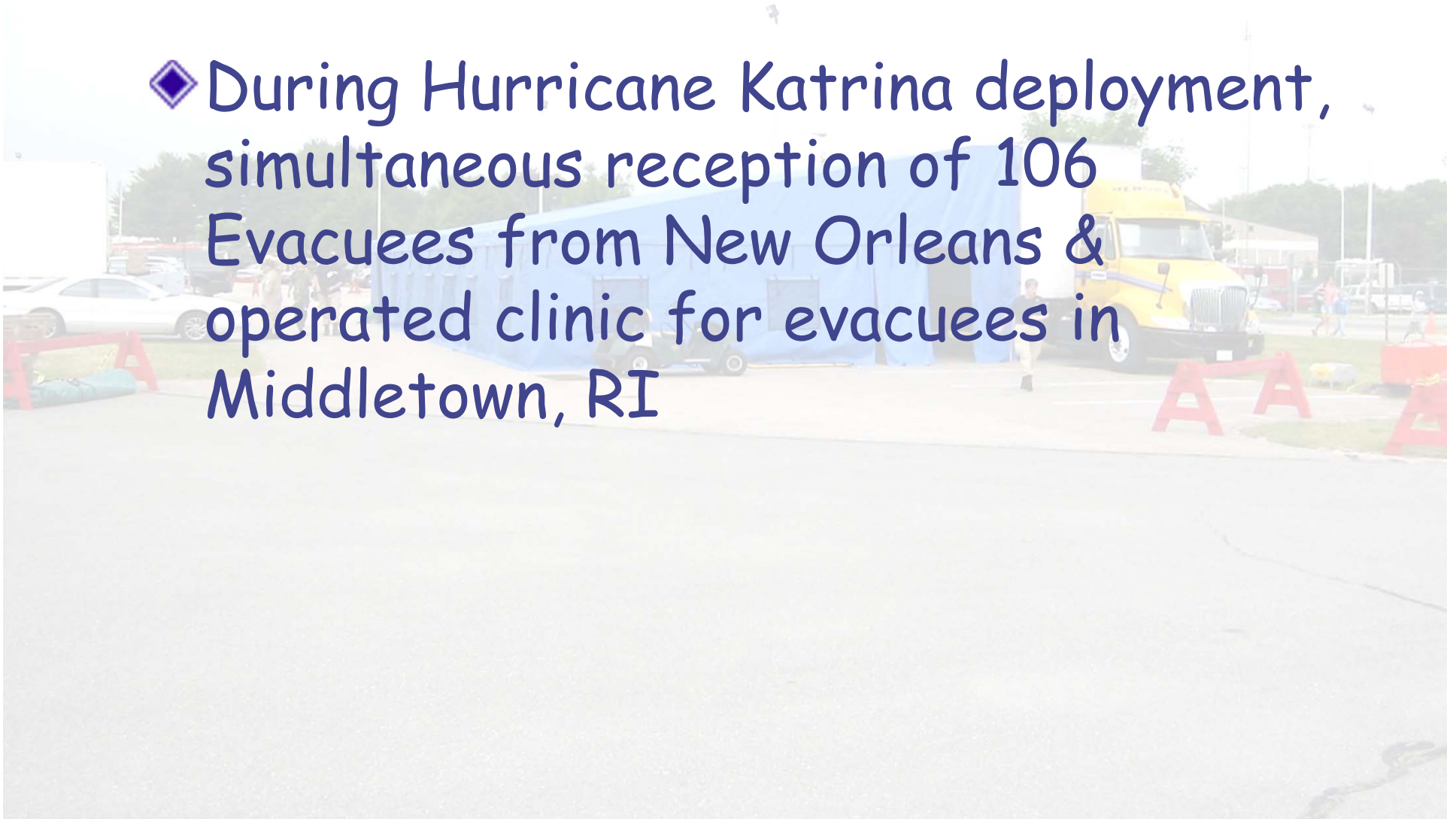
National Activities (cont)

- ◆ Red River Floods in North Dakota 2010
- ◆ State of the Union Address 2012
- ◆ Super Storm Sandy Response, Brooklyn, NY 2012



Local Connection

- ◆ During Hurricane Katrina deployment, simultaneous reception of 106 Evacuees from New Orleans & operated clinic for evacuees in Middletown, RI





Regular Team Training Activities

- ◆ Cox Marathon - May
- ◆ RI Air National Guard Airshow - June
- ◆ July 4th Parade Bristol, RI
- ◆ July 4th, Block Island, RI
- ◆ Ironman Half Marathon July
- ◆ Newport Folk & Jazz Festivals - August
- ◆ Parkinson's Disease Run/Walk-September
- ◆ 3 Day Scituate RI Arts festival
- ◆ Warehouse equipment & maintenance days.

Contractor to RI Department of Health

- ◆ Multi-year contract with RI DoH
- ◆ “Build capacity to establish a 100 bed field hospital independent of the Federal Cache”
- ◆ Respond to calls for “Extraordinary Medical Care”
- ◆ Assist in Public Health Initiatives
- ◆ Team owned equipment is maintained at team Headquarters and is ready to deploy to In-State Events.

Strong Relationships

- ◆ Support to RI State Police
- ◆ RI EMA Stakeholder
- ◆ Local EMA Partnerships
- ◆ RI Airport Corporation
- ◆ US Postal Service



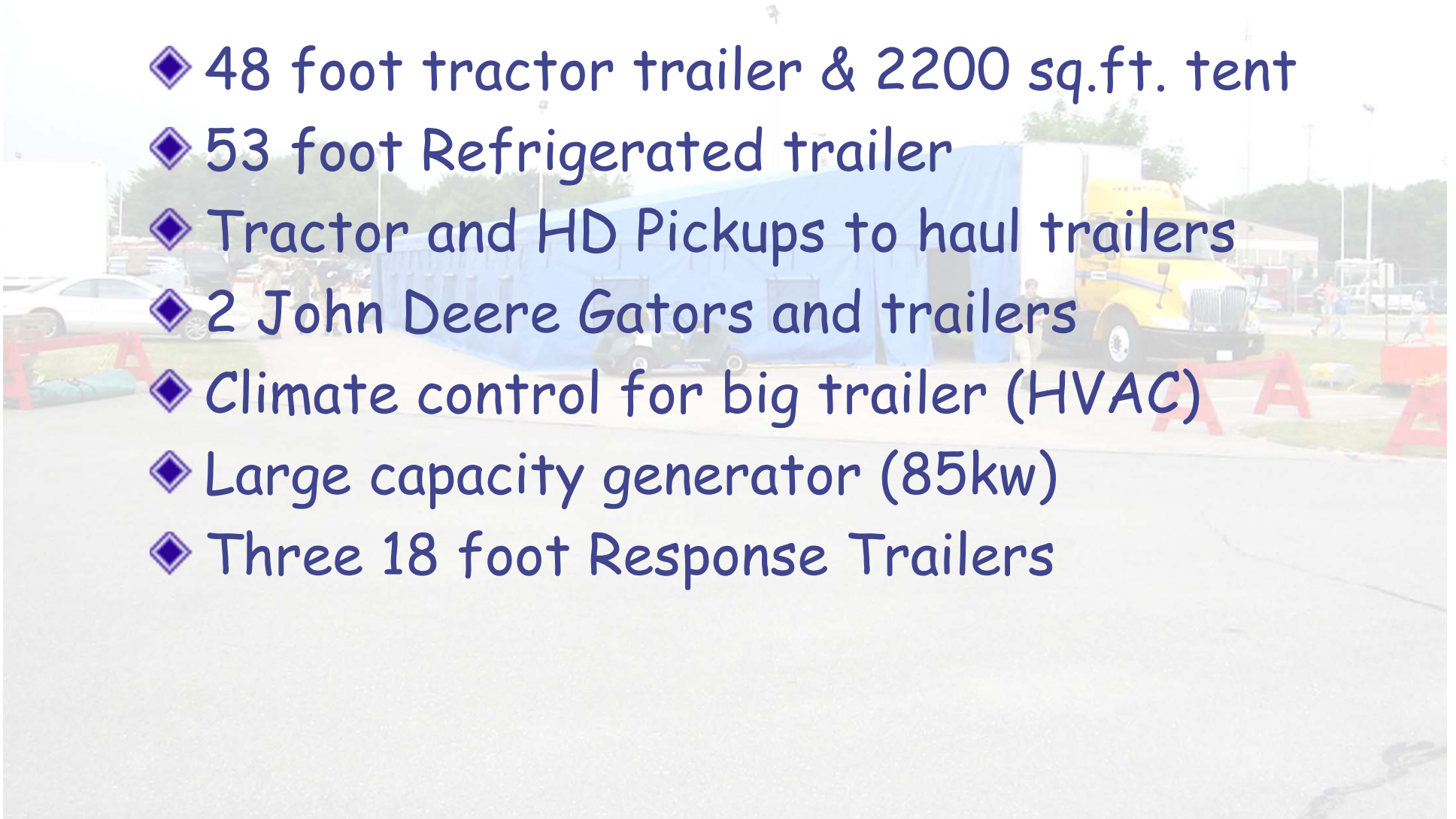
Enabling Paperwork

- ◆ 501 c 3 status
- ◆ MOU with State of Rhode Island (RIEMA)
- ◆ RI General Law 30-15-15 (Liability, workman's comp, and professional liability protection)
- ◆ RI EMS Ambulance Service License
- ◆ Wholesale Pharmacy License



In-State Team Capabilities and Equipment

- ◆ 48 foot tractor trailer & 2200 sq.ft. tent
- ◆ 53 foot Refrigerated trailer
- ◆ Tractor and HD Pickups to haul trailers
- ◆ 2 John Deere Gators and trailers
- ◆ Climate control for big trailer (HVAC)
- ◆ Large capacity generator (85kw)
- ◆ Three 18 foot Response Trailers



Equipment (cont)

- ◆ 24 foot Communications Trailer
 - Satellite Communication System
- ◆ 28 foot Medical Logistics Trailer
- ◆ Digital X-Ray Suite
- ◆ Wholesale Pharmacy License
- ◆ Fully equipped field hospital



RI Public Health Missions

- ◆ HEP A Providence Restaurant
- ◆ Tuberculosis Outbreak Central Falls High School 2007
- ◆ H1N1 pandemic school Vaccinations
 - Highest % of children (84.7%) vaccinated in the US.
- ◆ FAST Teams for Functional Support Service



Big Blue











Power Plant



Communications Trailer



LFAS 1



LFAS 1 Booted to BASE-X 305



Interior



Gator One











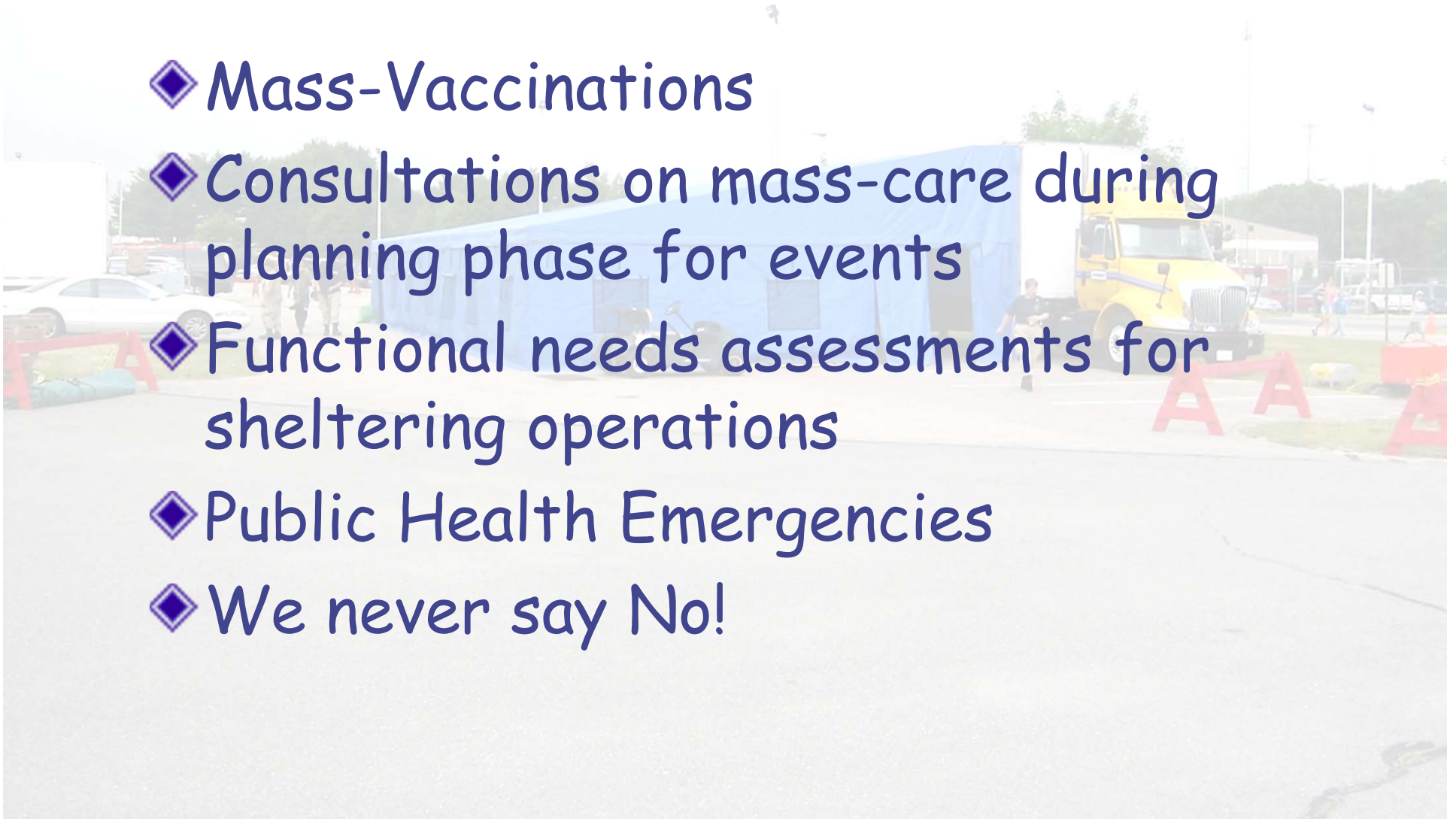


So, What can we do for you?

- ◆ Establish physician level field hospital
- ◆ Provide Emergency Department decompression
- ◆ Provide search team/firefighter rehab and pre & post entry screening
- ◆ Logistics support for lengthy operations

What we can do 2

- ◆ Mass-Vaccinations
- ◆ Consultations on mass-care during planning phase for events
- ◆ Functional needs assessments for sheltering operations
- ◆ Public Health Emergencies
- ◆ We never say No!



How are we activated?

◆ Officially through the RI Department of Health (CEPR) or RI Emergency Management Agency.

But

- If you have questions, or feel we can be helpful, call us. We're available 24/7



Contact Information

RI DMAT/MRC

50 Barnett Lane

West Greenwich, RI 02817

www.riresponds.org

401-385-3911 (office)

Tom Lawrence, Team Leader


tlawrence@ridmat.org

401-640-9568



Number One Goal

It's all about our
Patients!





























RHODE ISLAND

RI-1 DMAT

**DISASTER MEDICAL
ASSISTANCE TEAM**

The Team with Heart