



**Current Automation**  
POWER SOLUTION PROVIDERS





**Current Automation**  
POWER SOLUTION PROVIDERS



Visit our website for more indebt  
info on this product range



SW - 50

SW - 80

SW - 130 / 140

SW - 230 - 250

Warrenty

Sunfix

Sunclix



Sunmodule Plus  
SW 240–255 poly

Sunmodule Plus  
SW 260–275 mono black

Sunmodule Plus  
SW 265–280 mono



### SW 50

Article number:

**SW-50**

Length 680 mm  
 Width 680 mm  
 Height 34 mm  
 Frame Aluminum  
 Weight 5,5 kg

SW-50		
Maximum power	Pmax	50 Wp
Open circuit voltage	Uoc	22,1 V
Maximum power point voltage	Umpp	18,2 V
Short circuit current	Isc	2,95 A
Maximum power point current	Impp	2,75 A



### SW 80

Article number:

**SW-80**

Length 958 mm  
 Width 680 mm  
 Height 3 4 mm  
 Frame Aluminum  
 Weight 7,6 kg

#### SW-80

Maximum power	Pmax	80 Wp
Open circuit voltage	Uoc	21,9 V
Maximum power point voltage	Umpp	17,9 V
Short circuit current	Isc	4,78 A
Maximum power point current	Impp	4,49 A



# We turn sunlight into Power



## SW 130 - 140

Article number:

SW-130 / SW-140

Length	1508 mm
Width	680 mm
Height	34 mm
Frame	Aluminum
Weight	11,8 kg

### SW-130 - 140

Maximum power	P <sub>max</sub>	130 Wp	140 Wp
Open circuit voltage	U <sub>oc</sub>	21,5 V	22,1 V
Maximum power point voltage	U <sub>mpp</sub>	17,4 V	18,1 V
Short circuit current	I <sub>sc</sub>	7,99 A	7,97 A
Maximum power point current	I <sub>mpp</sub>	7,49 A	7,76 A



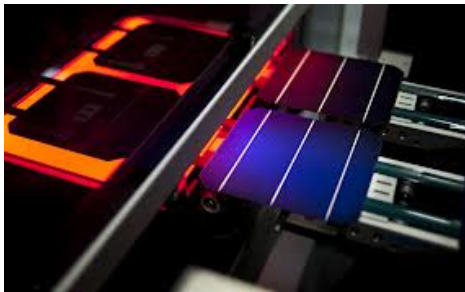


### SW 230 - 250

Article number:  
 Length 1675 mm  
 Width 1001 mm  
 Height 31 mm  
 Frame Aluminum  
 Weight 21,2 kg

SW-230 / SW-250

SW-230 - 250						
Maximum power	Pmax	230 Wp	235 Wp	240 Wp	245 Wp	250 Wp
Open circuit voltage	Uoc	36,9 V	37,0 V	37,2 V	37,5 V	37,6 V
Maximum power point voltage	Umpp	29,8 V	30,0 V	30,2 V	30,8 V	30,8 V
Short circuit current	Isc	8,25 A	8,35 A	8,44 A	8,49 A	8,64 A
Maximum power point current	Impp	7,72 A	7,85 A	7,96 A	7,96 A	8,12 A



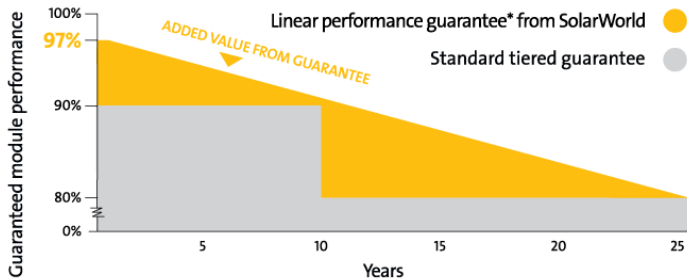
# Warranty

## Straight forward security

Because SolarWorld produces the highest quality, we can guarantee the best performance. That's why SolarWorld is the first solar company to offer a 25-year linear performance guarantee\* for all modules installed after January 1, 2010.

### *SolarWorld's linear performance warranty guarantees the output of your solar panels*

According to our guarantee, the actual power of a new module cannot deviate from the specified rated power by more than 3% during the first year; and afterward, the power will not decrease by more than 0.7 percent of the rated power per year. So at year 10, the Sunmodule's capacity is guaranteed to be at least 90% of the nameplate as opposed to the industry standard guarantee of 80%. This is added value that can help you get your project financed.

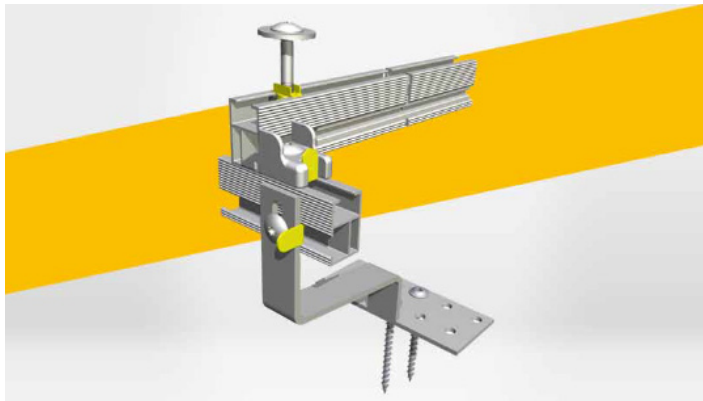


Clear added value compared to standard tiered guarantees.



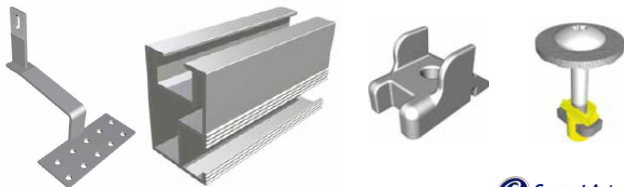
## Sunfix

Individual mounting systems for flat / pitched roofs or open areas.



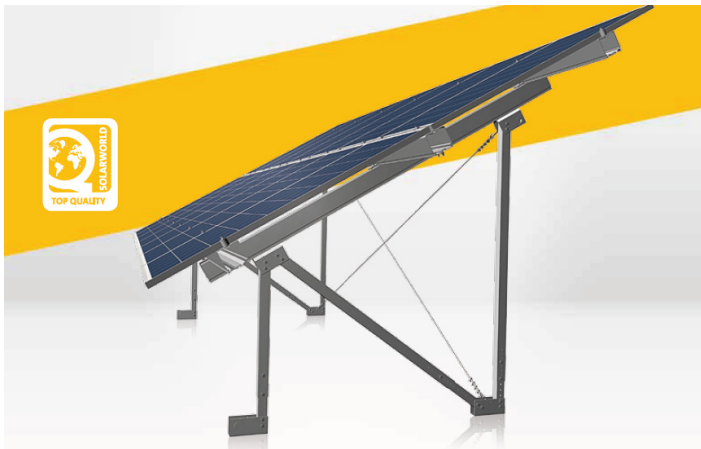
### The intelligent pitched roof mounting system

The Sunfix plus pitched roof mounting system from SolarWorld is your ideal mounting system for installing your SolarWorld Sunkits on all conventional pitched roofs. The Sunfix plus is the result of continuous optimization processes of the pitched roof system with enhanced ease of assembly and user-friendliness. Newly developed and lighter components together with an improved design results in a faster assembly on all conventional roof types. In addition, the pre-mounted assembly components offer an optimized system overview.



## Sunfix

### Ground Mounting



### Free Field System

The Sunfix free-field mounting system is the ideal solution for installing photovoltaic modules in free-field applications. The Sunfix free-field mounting system provides a universal solution for both small-scale and large-scale projects. The modular design of the system meets highest stability and technology standards. Due to its ability to offset uneven land plots the system is suitable for a wide variety of requirements and range of tilt angles for the modules' alignment.

The entire system consists of a limited number of parts only. Their design ensures a perfect matching, enabling a fast and easy system installation. Highest quality standards are guaranteed by the fact that only components made of aluminium and stainless steel have been used when designed.

## System Components



Roof hook UNI 24



Roof hook Schiefer 0



Double flange M8



Double flange top



Double flange Bolt M8



Double flange Nut



Fix Sun



Connect S



Plus Connect 1



Edge



Module Fix



Hanger Bolt M10x210



Hanger Bolt M10 Seal



Hanger Bolt Flange Nut M10



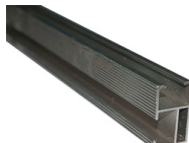
Wood screw 8x100



Wood screw 6x100



Plus Connect Uni



FIX PLUS 1 5151 MM



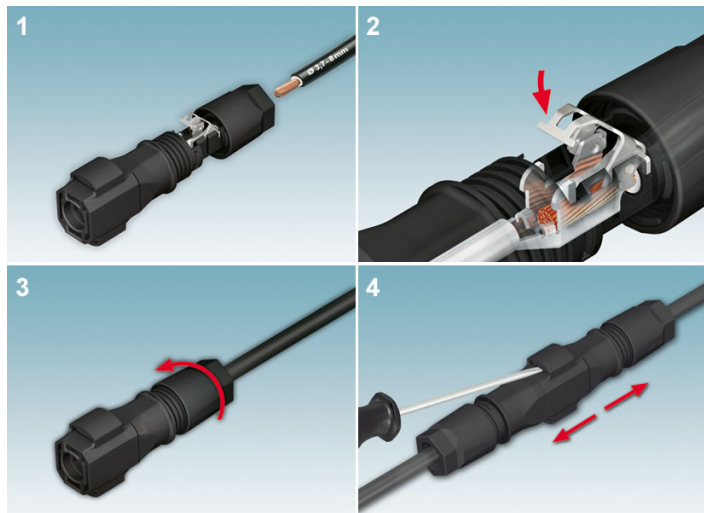
FIX Plus T (5151mm  
Length)



FIX Plus T Profile rubber seal



Kalzip Clamp



### SUNCLIX plug-in connectors

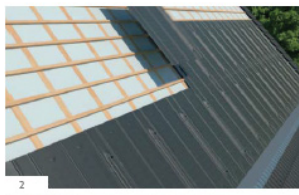
SUNCLIX - easy and safe mounting.  
With SUNCLIX, mounting couldn't be simpler:

- 1. Insert the stripped conductor,
- 2. Close spring contact,
- 3. Tighten the screw connection - and you're done!
- 4. Release with screwdriver

The female connector and male connector can then easily be plugged together manually. An integrated lock that can only be loosened with a screwdriver prevents the accidental loosening of the DC plug-in connection when subjected to loads.



1



2



3



4



5

## Sundeck

Sundeck is the ideal solution for new buildings, for an upgrading of existing buildings or for roof renovation. It can be easily fixed to any standard roofing battens.

- > The Sundecks are being fixed to the horizontal roofing battens. (1)
- > The Sundecks are being connected to each other horizontally and vertically. (2)
- > The customized fixing parts of the Sundecks ensure an optimum air circulation as well as a solid fixing of the solar panels. (3)
- > The Sunmodule Plus solar panels are being fixed to the Sundecks with clamps. (4)
- > View of a readily installed Sundeck solar power system. The intersection of the solar panel area and the standard roof covering is covered with connection plates. The rest of the roof is to be covered with standard roof tiles. (5)

## Suntub - flat roof solution

Suntub systems are composed of two easily assembled, identical plastic bases. Each system has two high and two low bases to support a single solar module. To ensure the module has the ideal tilt angle to the sun, the Suntubs must be set up with their flat sides facing south.



## Suntrol DATA Logger

The Suntrol data logger enables comprehensive monitoring of the SolarWorld solar power system. It comes in three variants, which are used depending on the size and scope of the solar power system. The data logger is connected to the inverter of the solar power system via an RS485 interface or, optionally, via Bluetooth. You can monitor the performance of the solar power system, the inverters, the yield forecast and degradation calculations online and at any time via mobile phone or PC.



## Suntrol Internet portal

Using a cell phone or a Computer, system operators can keep an eye on the system information via the Suntrol Internet portal. In addition to performance data and characteristics of the solar power system, the interface with the Suntrol data logger displays the daily yield per inverter, to-the-minute. Moreover, the monthly and annual yields are graphically evaluated and recorded. When using an electronic domestic supply meter, there is the added option of displaying one's self consumption. An event log can help recognise possible yield deviations in order to quickly resolve them. For example, the yields of different solar power systems can be compared depending on their location, allowing optimisation where necessary.

### Always up to date.

With Suntrol<sup>®</sup> products, you can always keep an eye on the current yield situation of your solar power system and regularly monitor its performance – on your house wall, in your living room, on your computer or at all times on your portable iPod Touch.

